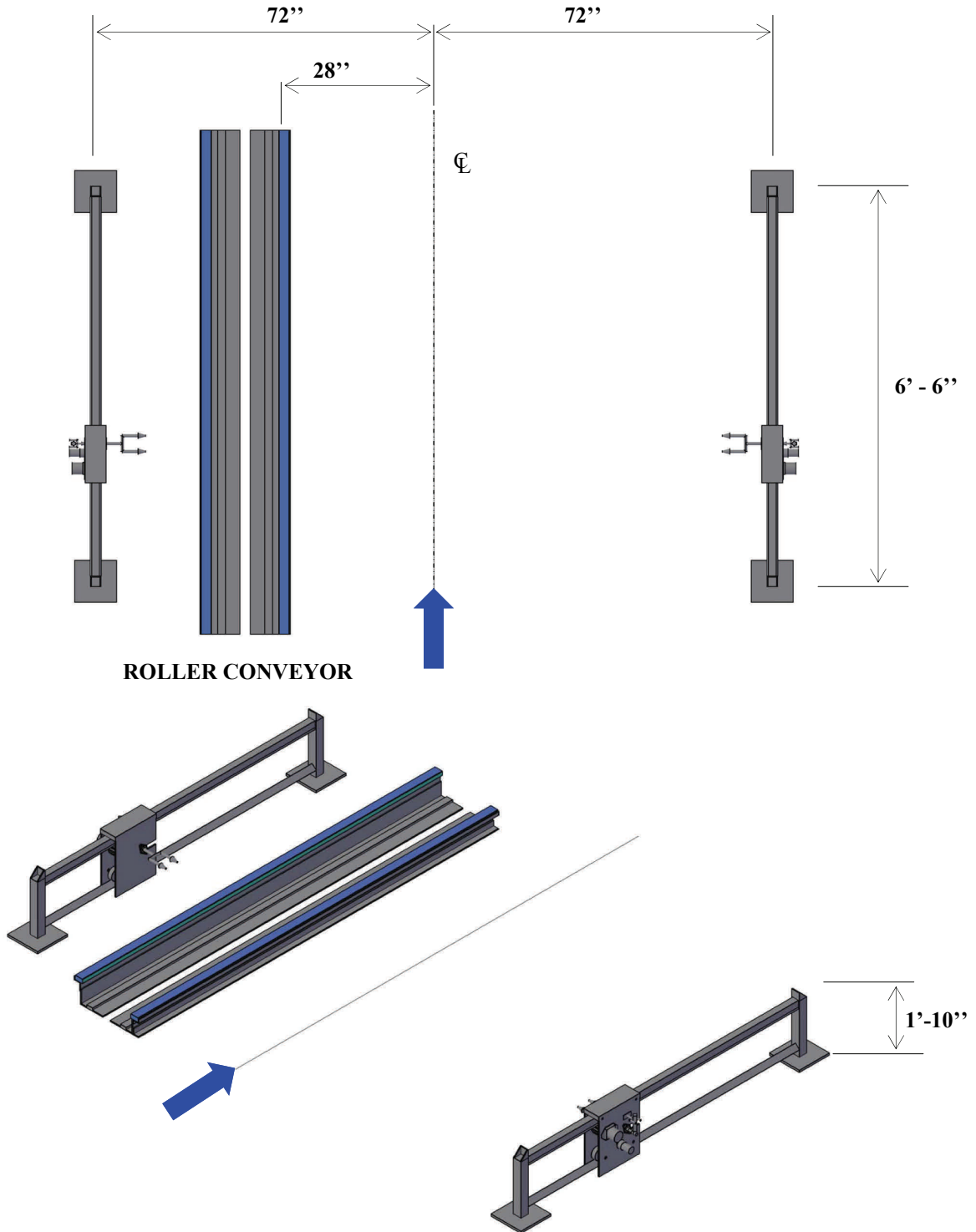


# FOLLOWER WHEEL BLASTER, MODEL WBF1

The AVW Stainless Steel **Follower Wheel Blaster** model use in most tunnels today. The unit is low profile w/high pressure spray nozzle-8GPM, and fit in the conveyor pit grate area of most vehicles.



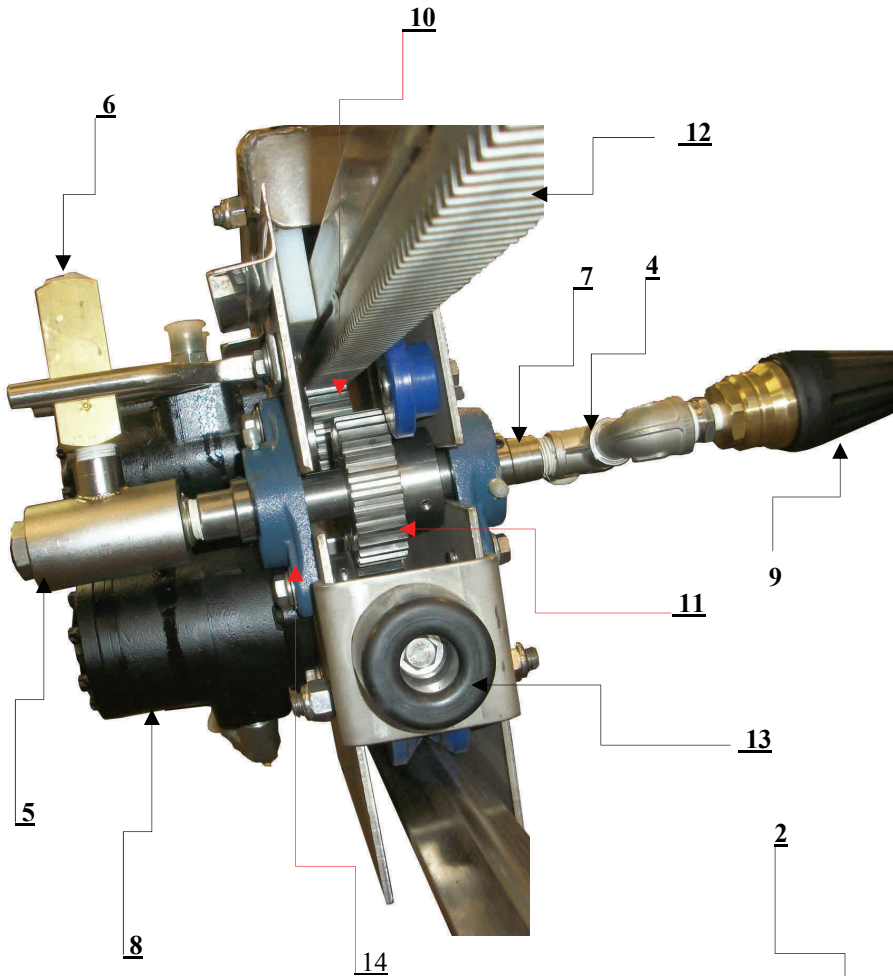
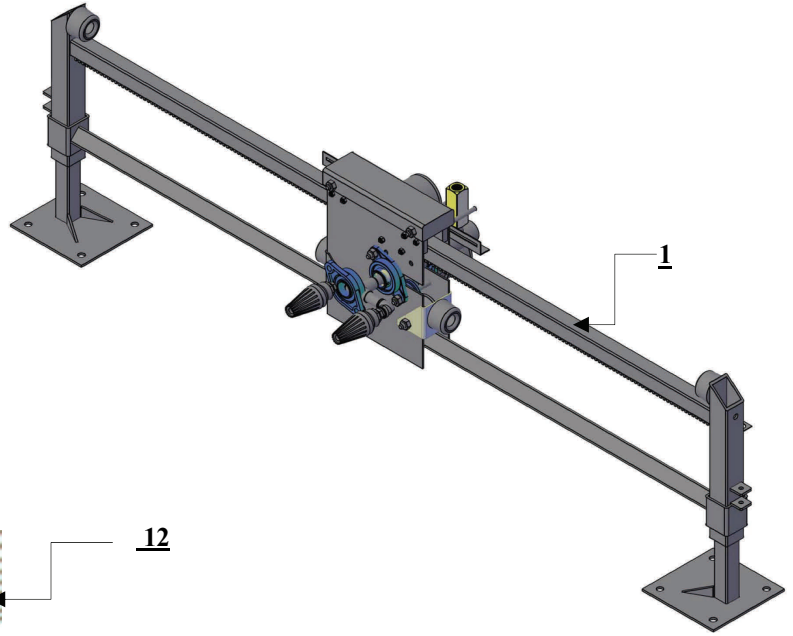
# FOLLOWER WHEEL BLASTER, MODEL WBF1



RIGHT ANGLE SWIVEL



CHECK VALVE



3. TURBO NOZZLE (as requested)



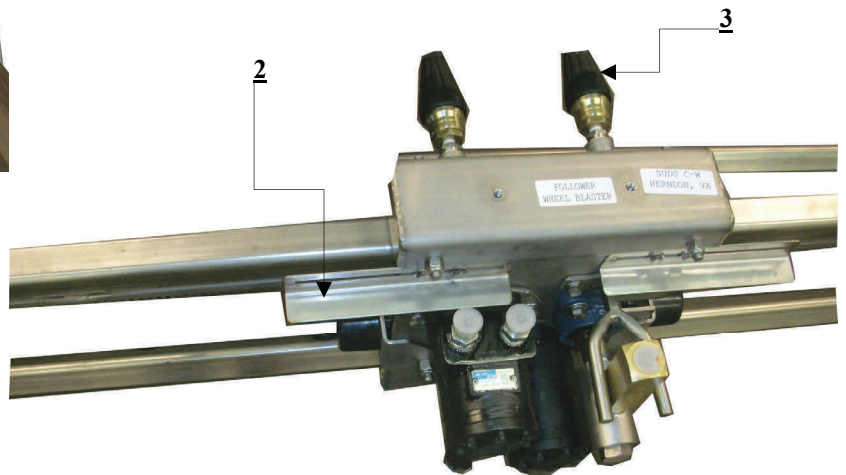
HIGH PRESSURE SPRAY NOZZLE



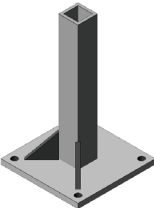
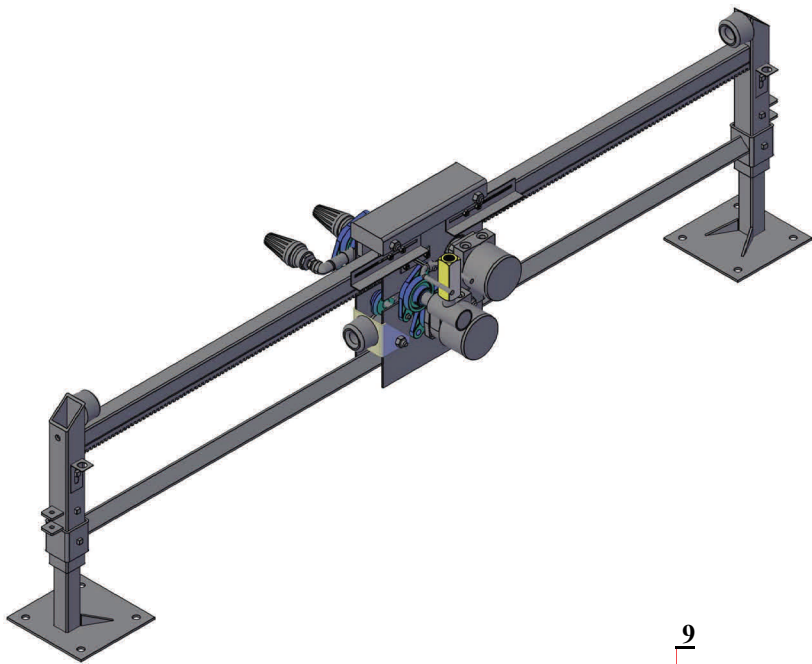
RECESSED BUMPER



GEARS



# FOLLOWER WHEEL BLASTER, MODEL WBF1



LEG



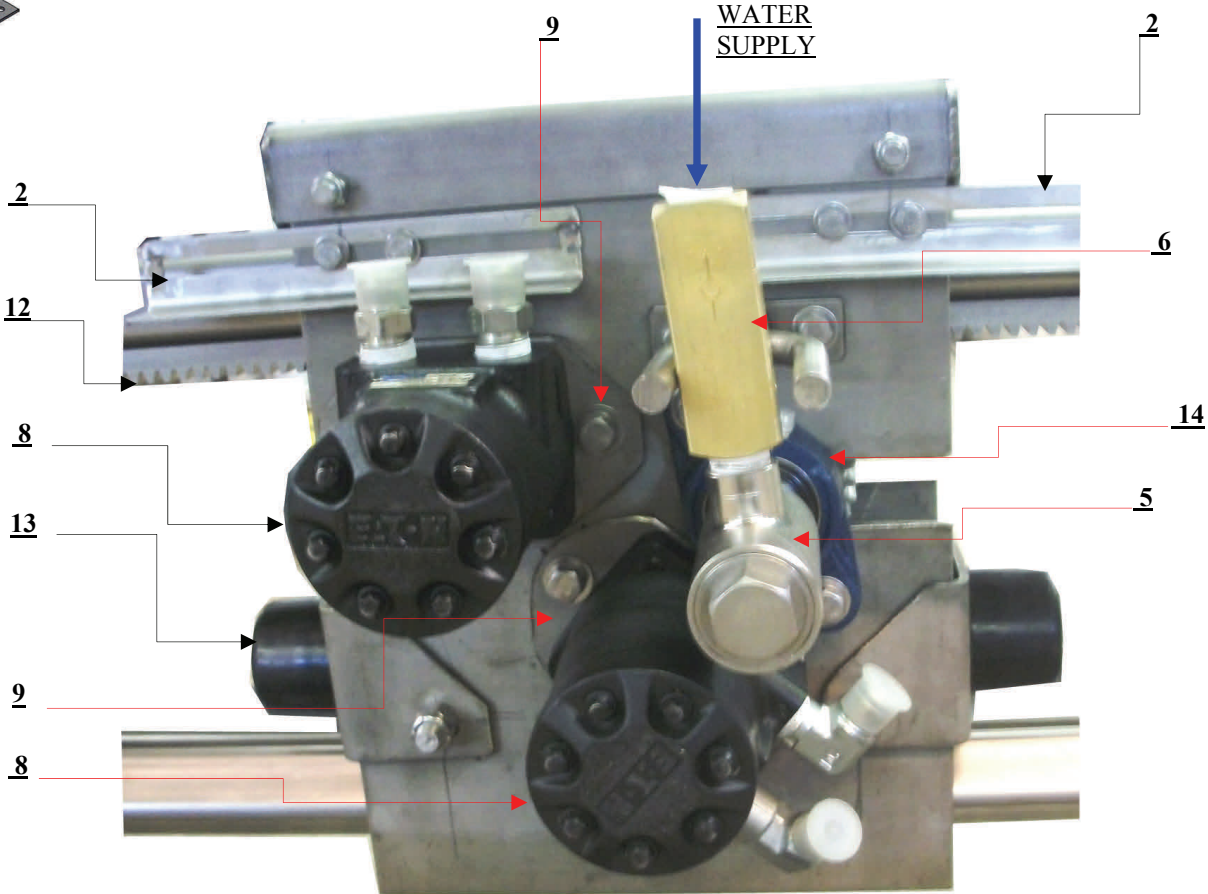
HYDRAULIC MOTOR



TRAVEL MOTORS  
MOUNTING PLATES



2-BOLT FLANGE  
BEARING 1"

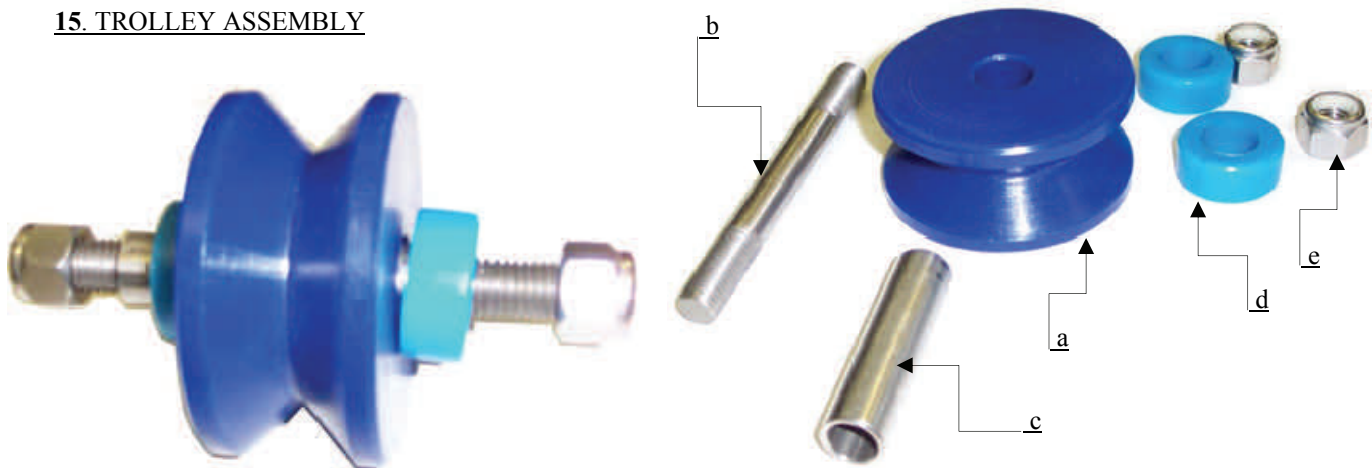


GEAR RACK



# FOLLOWER WHEEL BLASTER, MODEL WBF1

## 15. TROLLEY ASSEMBLY



## POWER UNIT



## 18. POWER UNIT: "VICKERS"

w/"Baldor" Electrical Motor Spec. 36H726-1868G1  
 3HP, 1725RPM, 230/460 Volts, 8.6/4.3 Amps., 60Hz, TEFC  
 Frame 184TYZ, 3PH, 40°C AMB.-CONT.

w/"Vickers" Piston Pump PVQ13 A2R SE1S, CM7 12 (it was number on Pump's plate)  
 (Number gotten from Hoffman Car Wash: "Vickers" PVQ13-A2R-SE1S-20-CM7-11)

w/Heat Exchanger RM-08-98540  
 RWE DWG #00118B Model #J1957A  
 Ralph W. Earl Co., Inc.

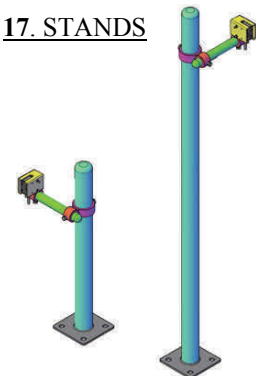
## TROLLEY ASSEMBLY:

- a. WBF1UHMW1
- b. TR1213x5SS
- c. WBF1SS1
- d. WBF1UHMW2
- e. NLN1213



## 16. ADJUSTER

## 17. STANDS



## ***FOLLOWER WHEEL BLASTER, MODEL WBF1***

<b>FOLLOWER WHEEL BLASTER, WBF1</b>			
<b>Item</b>	<b>Description</b>	<b>PART No.</b>	<b>Qty.</b>
1	<b>FRAME LEG</b>	- WBF1AA	1/PER SIDE 2/PER SIDE
2	<b>PROXIMITY SWITCH TARGET</b> - ALUMINIUM - STAINLESS STEEL	WBF1-PST-AL WBF1-PST-SS	2/PER SIDE
3	<b>HIGH PRESSURE SPRAY NOZZLE ( qty. as requested)</b> ST-457,8GPM, 5800PSI	WBF1-TN5800-8	3/PER SIDE
4	<b>NOZZLE TEE ASSEMBLY</b>	WBF1-NTA	1/PER SIDE
5	<b>RIGHT ANGLE SWIVEL</b> (HI-FLO-90° 41.261, STAINLESS STEEL, WDR-13, 1/2"NPTF x 1/2"NPTM, H-70, Ø25)	WBF1-HFS90	1/PER SIDE
6	<b>CHECK VALVE 1/2"</b> ,	C800B	1/PER SIDE
7	<b>SPINNING MANIFOLD</b>	WBF1-SM1	1/PER SIDE
8	<b>HYDRAULIC MOTOR– SAME: SPINNER and TRAVEL MOTOR</b> (H Series), SHAFT DIA. 1", Displacement 2.8	TB0036-WBF1T-0516	2/PER SIDE
9	<b>TRAVEL MOTOR'S MOUNTING PLATE</b>	WBF1T1	2/PER SIDE
10	<b>GEAR</b> (Spur Gear NSS1024, pitch diameter 2.400" No. Outside diameter: 2.600", of teeth:24, Hole 1")	WBF1-G1024-1000-SS	1/PER SIDE
11	<b>GEAR</b> ( Spur Gear NSS1030, pressure angle 14-1/2°, Pitch diameter 3.000" No. Outside diameter: 3.200", Of teeth:30, Hole 1", with Hole 1")	WBF1-G1030-SS	2/PER SIDE
12	<b>GEAR RACK</b> (R10x6,SS 14-1/2° PA Gears,#303/304 SS Gear Rack, pitch 10, Face width 1", overall thickness 5/8", pitch line backing .525")	R0421710017	1/PER SIDE
13	<b>RECESSER BUMPER ( w/WASHER)</b>	WBF1RB	2/PER SIDE
14	<b>2-BOLT FLANGE BEARING 1"</b> (No F2B-SC-100)	WBF1-2BFB100	1/PER SIDE
15	<b>TROLLEY ASSEMBLY*</b>	WBF1-TR	1/PER SIDE
16	<b>ADJUSTER</b>	WBF1-UHMW3	1/PER SIDE
17.	<b>PHOTO EYES</b>	PHE1-0315	2 SETS
18	<b>POWER UNIT (optional)</b> (3HP, 1725RPM, 230/460 Volts, 8.6/4.3 Amps)		1

