

SW2 - FREE STANDING SIDE WASHER



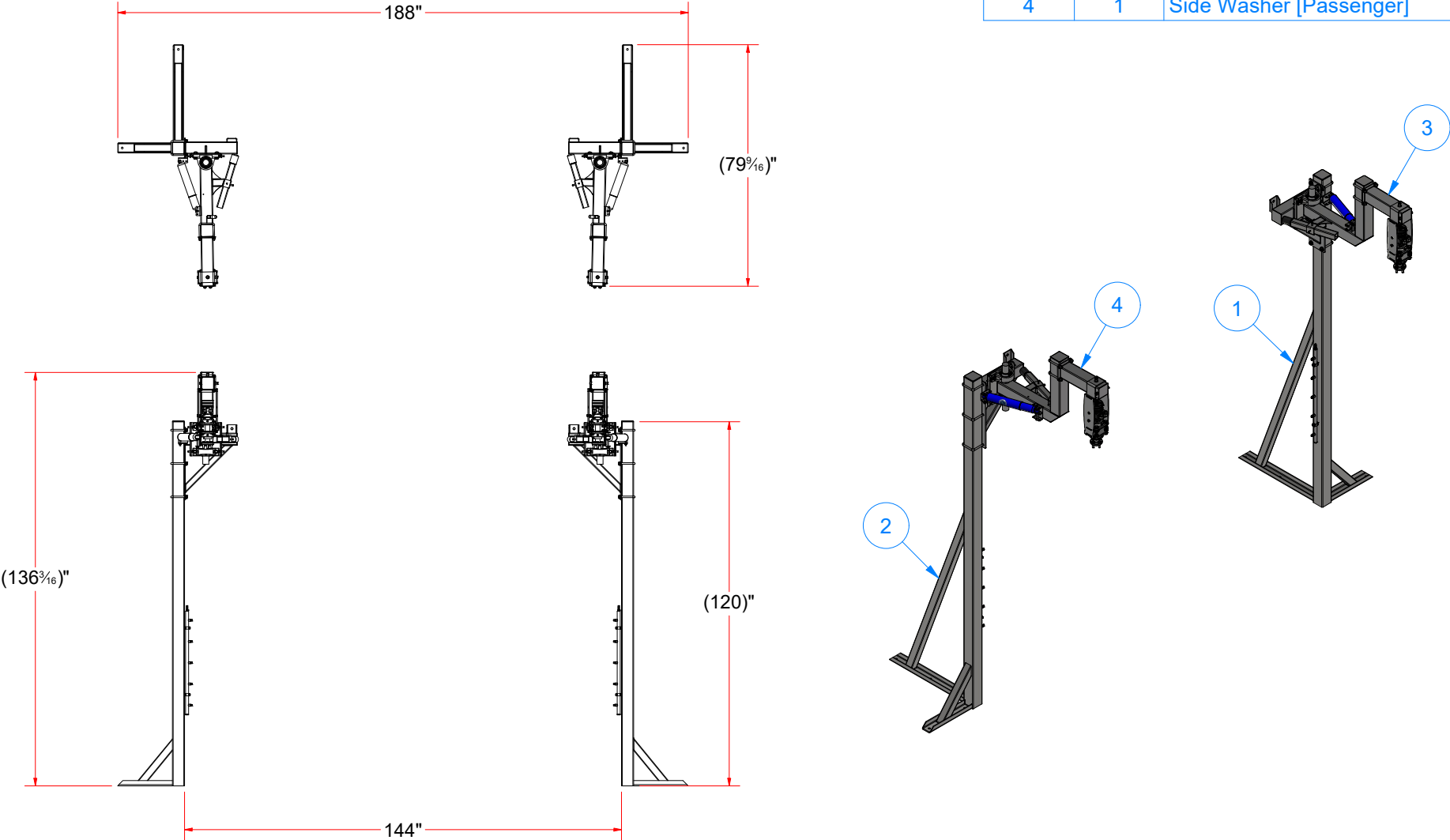
AVW EQUIPMENT CO., INC.  
105 S. 9TH AVENUE  
MAYWOOD, IL 60153  
Tel: 708-343-7738 Fax: 708-343-9065  
WWW.AVWEQUIPMENT.COM

- COMPANY PROPRIETARY NOTE -  
THIS DRAWING AND ITS DESIGNS ARE PROPERTY OF AVW EQUIPMENT CO. &  
IT IS NOT TO BE USED OR REPRODUCED WITHOUT THE PERMISSION FROM AVW CO.

DRAWN BY	Ljubomir	CUSTOMER: AVW EQUIPMENT CO.	
CHECKED BY		PROJECT: SW2 - SIDE WASHERS	
QTY		DESCRIPTION: FREE STANDING SIDE WASHER	
RELEASE DATE	11/30/2021	PART NUMBER: SW2	REV# 2
DIMENSION ARE IN INCHES & PROVIDED PRIOR TO SURFACE TREATMENTS, UNLESS NOTED.		SIZE A	EST WEIGHT: 788 lbmass
			SHEET 1 of 34

SW2 - FREE STANDING SIDE WASHER

Parts List		
ITEM	QTY	DESCRIPTION
1	1	Driver Side Leg Assembly
2	1	Passenger Side Leg Assembly
3	1	Side Washer [Driver]
4	1	Side Washer [Passenger]

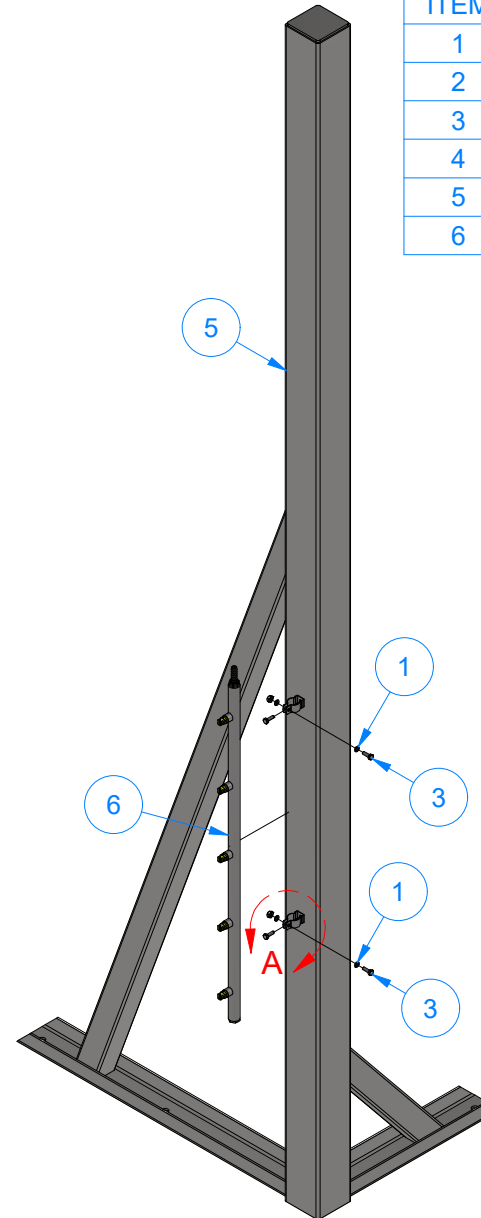
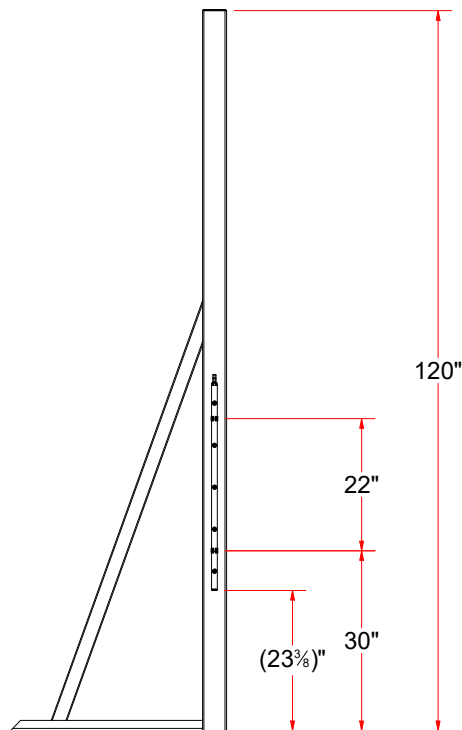
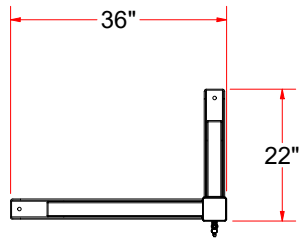


AVW EQUIPMENT CO., INC.  
105 S. 9TH AVENUE  
MAYWOOD, IL 60153  
Tel: 708-343-7738 Fax: 708-343-9065  
WWW.AVWEQUIPMENT.COM

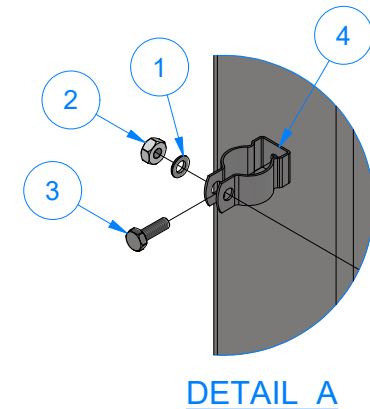
**- COMPANY PROPRIETARY NOTE -**  
THIS DRAWING AND ITS DESIGNS ARE PROPERTY OF AVW EQUIPMENT CO. &  
IT IS NOT TO BE USED OR REPRODUCED WITHOUT THE PERMISSION FROM AVW CO.

DRAWN BY	Ljubomir	CUSTOMER: AVW EQUIPMENT CO.	
CHECKED BY		PROJECT: SW2 - SIDE WASHERS	
QTY		DESCRIPTION: FREE STANDING SIDE WASHER	
RELEASE DATE	11/30/2021	PART NUMBER: SW2	REV# 2
DIMENSION ARE IN INCHES & PROVIDED PRIOR TO SURFACE TREATMENTS, UNLESS NOTED.		SIZE A	EST WEIGHT: 788 lbmass
			SHEET 2 of 34

# SW2A - Driver Side Leg Assembly



Parts List		
ITEM	QTY	DESCRIPTION
1	4	1/4" Washer
2	2	1/4"-20 Hex Nut
3	4	1/4"-20 x 3/4" Hex Screw
4	2	Clamping Hanger
5	1	Driver Side Leg - Weldment
6	1	Side Washer Manifold - Assembly



AVW EQUIPMENT CO., INC.  
105 S. 9TH AVENUE  
MAYWOOD, IL 60153  
Tel: 708-343-7738 Fax: 708-343-9065  
WWW.AVWEQUIPMENT.COM

## - COMPANY PROPRIETARY NOTE -

THIS DRAWING AND ITS DESIGNS ARE PROPERTY OF AVW EQUIPMENT CO. & IT IS NOT TO BE USED OR REPRODUCED WITHOUT THE PERMISSION FROM AVW CO.

DRAWN BY

Ljubomir

CUSTOMER: AVW EQUIPMENT CO.

CHECKED BY

PROJECT: SW2 - SIDE WASHERS

QTY

DESCRIPTION: Driver Side Leg Assembly

RELEASE DATE

11/30/2021

PART NUMBER: SW2A

REV# 2

DIMENSION ARE IN INCHES & PROVIDED PRIOR TO SURFACE TREATMENTS, UNLESS NOTED.

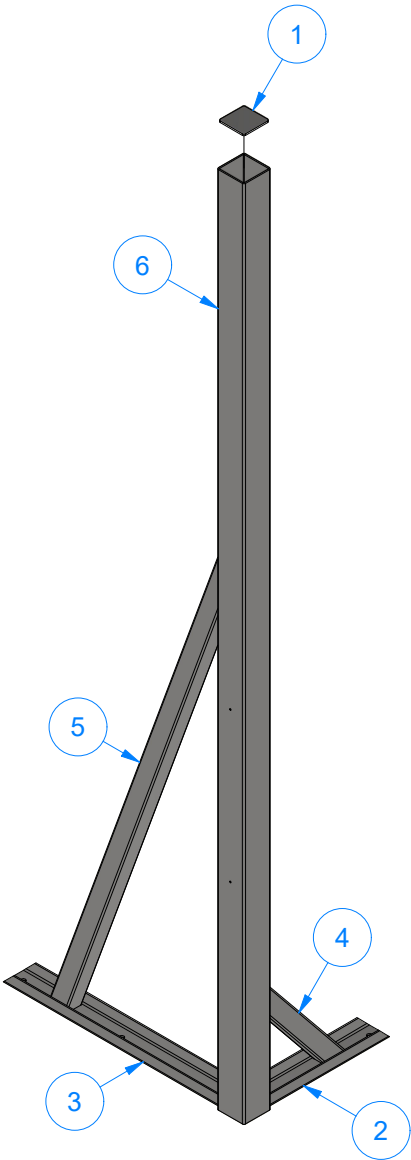
SIZE A

EST WEIGHT: 159 lbmass

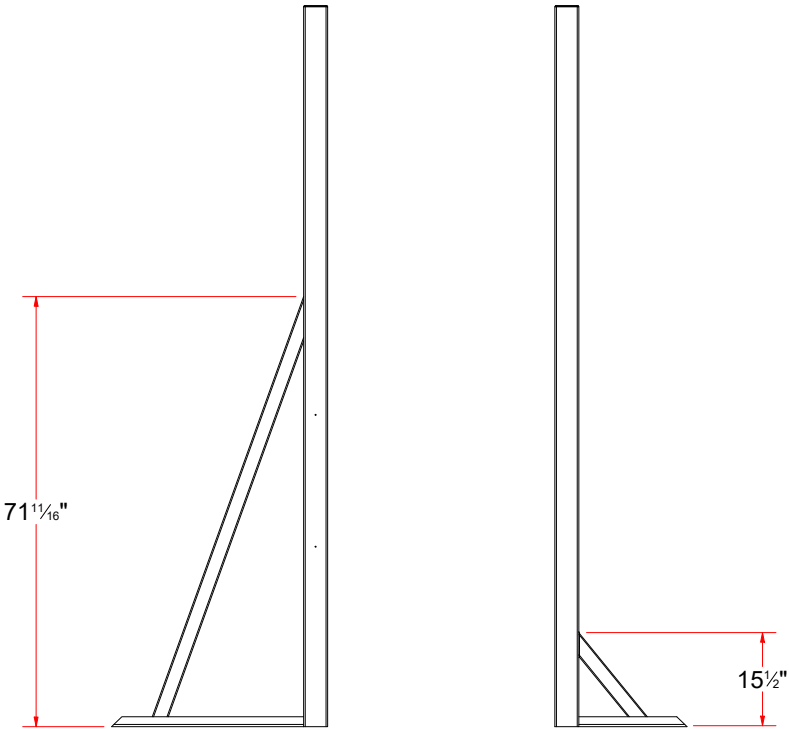
SHEET 3 of 34

PATH: L:\Libraries\Productivity\Legs\Free Standing Side Washer Legs\SW2A - Driver Side Leg\SW2A.iam

SW2AA - Driver Side Leg - Weldment



Parts List		
ITEM	QTY	DESCRIPTION
1	1	Plate #3/16"x 3 3/4"x 3 3/4"
2	1	Plate #3/16" x 6 1/8" x 18" LG.
3	1	Plate #3/16" x 6 1/8" x 32" LG.
4	1	Sq. Tube #7Ga x 2 1/2" x 2 1/2" x 28 1/2" LG.
5	1	Sq. Tube #7Ga x 2 1/2" x 2 1/2" x 76" LG.
6	1	Sq. Tube #7Ga. x 4" x 4" x 120" LG.

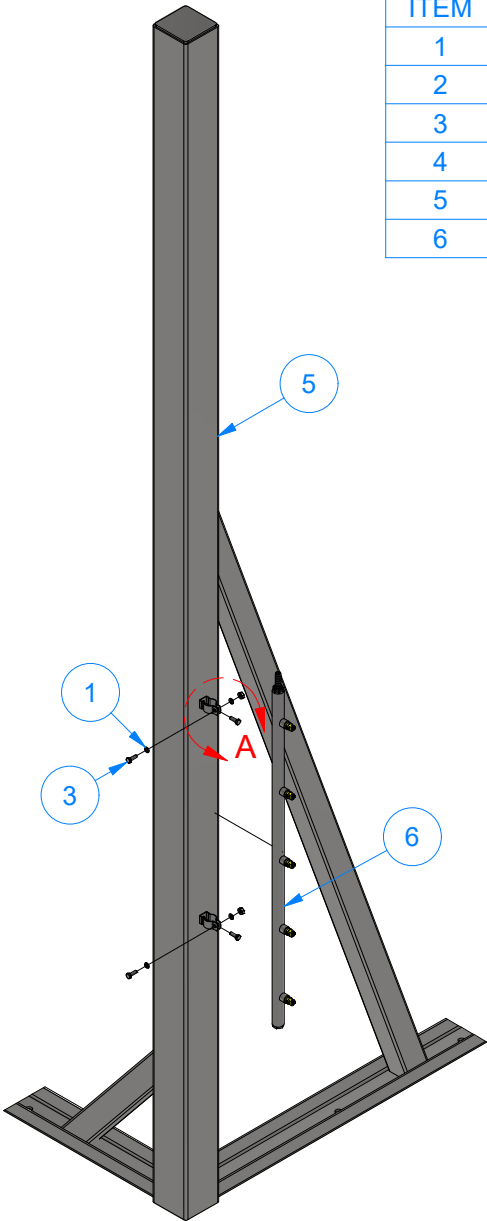
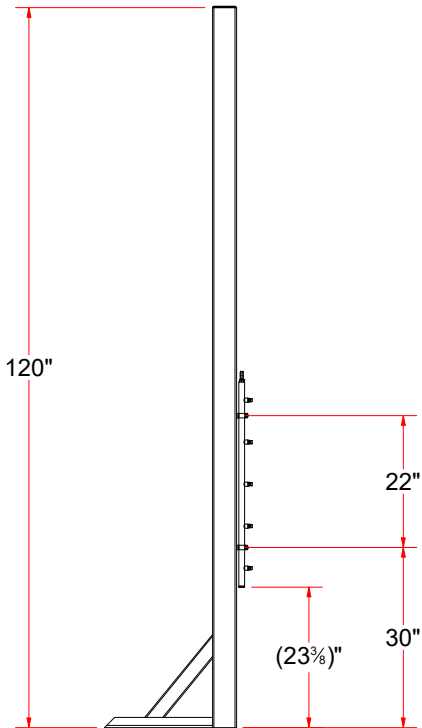
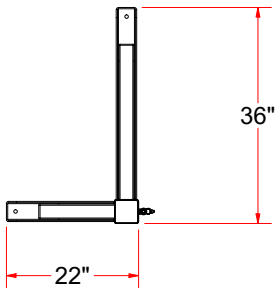


AVW EQUIPMENT CO., INC.  
105 S. 9TH AVENUE  
MAYWOOD, IL 60153  
Tel: 708-343-7738 Fax: 708-343-9065  
WWW.AVWEQUIPMENT.COM

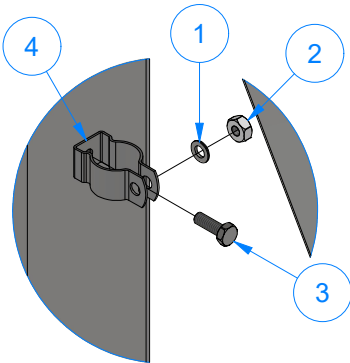
- COMPANY PROPRIETARY NOTE -  
THIS DRAWING AND ITS DESIGNS ARE PROPERTY OF AVW EQUIPMENT CO. &  
IT IS NOT TO BE USED OR REPRODUCED WITHOUT THE PERMISSION FROM AVW CO.

DRAWN BY	Ljubomir	CUSTOMER: AVW EQUIPMENT CO.	
CHECKED BY		PROJECT: SW2 - SIDE WASHERS	
QTY		DESCRIPTION: Driver Side Leg - Weldment	
RELEASE DATE	11/30/2021	PART NUMBER: SW2AA	REV# 2
DIMENSION ARE IN INCHES & PROVIDED PRIOR TO SURFACE TREATMENTS, UNLESS NOTED.		SIZE A	SHEET 4 of 34

SW2B - Passenger Side Leg Assembly



Parts List		
ITEM	QTY	DESCRIPTION
1	4	1/4" Washer
2	2	1/4"-20 Hex Nut
3	4	1/4"-20 x 3/4" Hex Screw
4	2	Clamping Hanger
5	1	Passenger Side Leg - Weldment
6	1	Side Washer Manifold - Assembly



DETAIL A

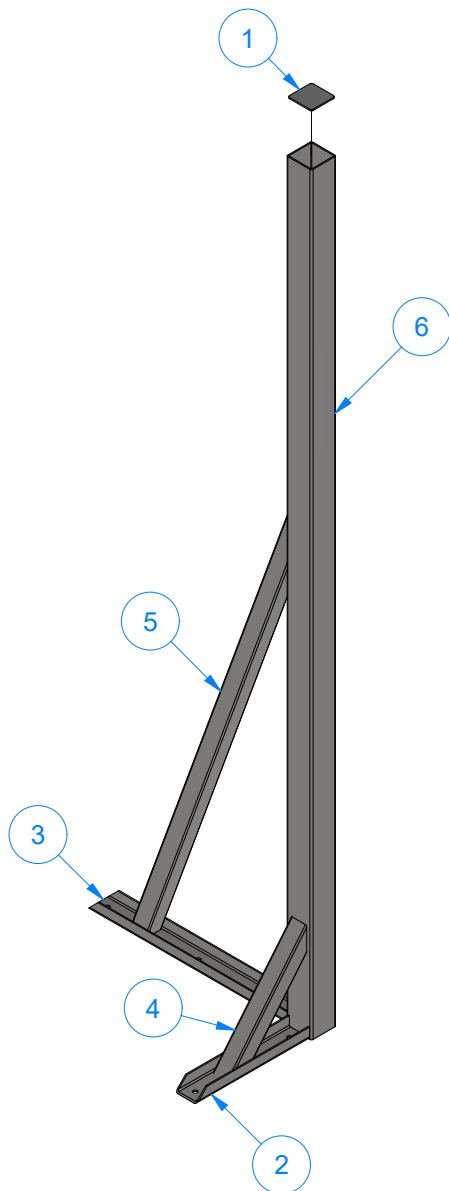


AVW EQUIPMENT CO., INC.  
105 S. 9TH AVENUE  
MAYWOOD, IL 60153  
Tel: 708-343-7738 Fax: 708-343-9065  
WWW.AVWEQUIPMENT.COM

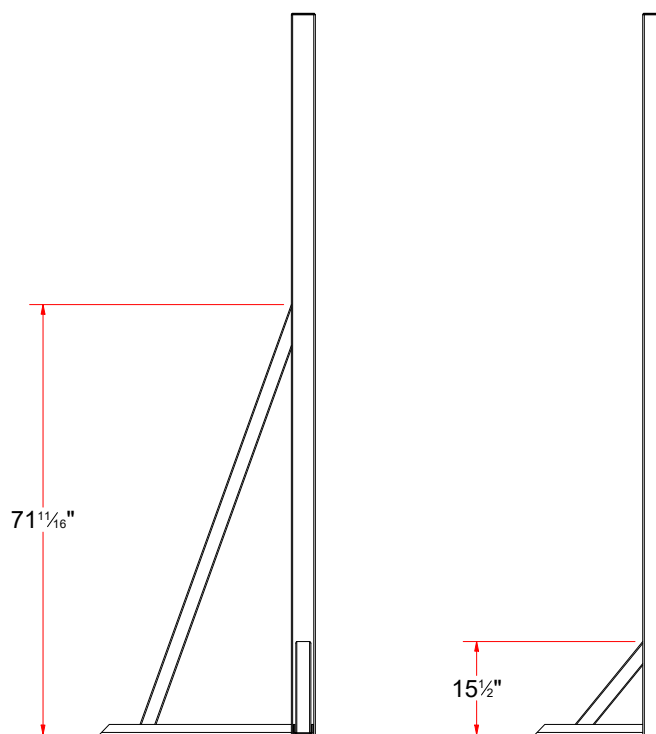
- COMPANY PROPRIETARY NOTE -  
THIS DRAWING AND ITS DESIGNS ARE PROPERTY OF AVW EQUIPMENT CO. &  
IT IS NOT TO BE USED OR REPRODUCED WITHOUT THE PERMISSION FROM AVW CO.

DRAWN BY	Ljubomir	CUSTOMER: AVW EQUIPMENT CO.	
CHECKED BY		PROJECT: SW2 - SIDE WASHERS	
QTY		DESCRIPTION: Passenger Side Leg Assembly	
RELEASE DATE	11/30/2021	PART NUMBER: SW2B	REV# 2
DIMENSION ARE IN INCHES & PROVIDED PRIOR TO SURFACE TREATMENTS, UNLESS NOTED.		SIZE A	EST WEIGHT: 159 lbmass
			SHEET 5 of 34

## SW2BA - Passenger Side Leg - Weldment



Parts List		
ITEM	QTY	DESCRIPTION
1	1	Plate #3/16"x 3 3/4"x 3 3/4"
2	1	Plate #3/16" x 6 1/8" x 18" LG.
3	1	Plate #3/16" x 6 1/8" x 32" LG.
4	1	Sq. Tube #7Ga x 2 1/2" x 2 1/2" x 28 1/2" LG.
5	1	Sq. Tube #7Ga x 2 1/2" x 2 1/2" x 76" LG.
6	1	Sq. Tube #7Ga. x 4" x 4" x 120" LG.



**AVW EQUIPMENT CO., INC.**  
105 S. 9TH AVENUE  
MAYWOOD, IL 60153  
Tel: 708-343-7738 Fax: 708-343-9065  
[WWW.AVWEQUIPMENT.COM](http://WWW.AVWEQUIPMENT.COM)

- COMPANY PROPRIETARY NOTE -

THIS DRAWING AND ITS DESIGNS ARE PROPERTY OF AVW EQUIPMENT CO. &  
IT IS NOT TO BE USED OR REPRODUCED WITHOUT THE PERMISSION FROM AVW CO.

DRAWN BY

Ljubomir

CUSTOMER: AVW EQUIPMENT CO.

CHECKED BY

PROJECT: SW2 - SIDE WASHERS

QTY

DESCRIPTION: Passenger Side Leg - Weldment

RELEASE  
DATE

11/30/2021

PART NUMBER: SW2BA

REV# 2

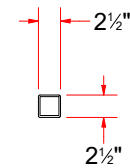
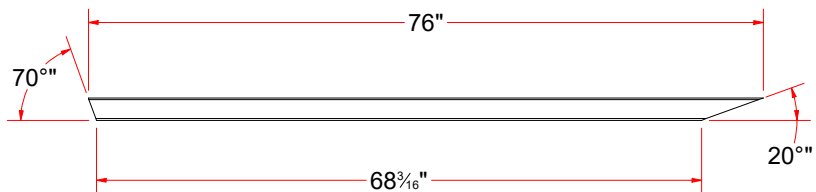
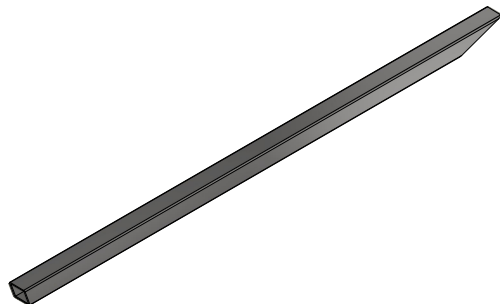
DIMENSION ARE IN INCHES & PROVIDED PRIOR TO SURFACE TREATMENTS, UNLESS NOTED.

SIZE  
A

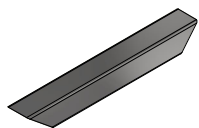
EST WEIGHT: 155 lbmass

SHEET 6 of 34

PATH:L:\Libraries\Productivity\Legs\Free Standing Side Washer Legs\SW2B - Passenger Side Leg\Parts\SW2PA - Passenger Side Leg Weldment\SW2BA.iam



Sq. Tube #7Ga x 2 1/2" x 2 1/2" x 76" LG.



Sq. Tube #7Ga x 2 1/2" x 2 1/2" x 28 1/2" LG.

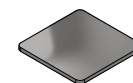
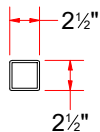
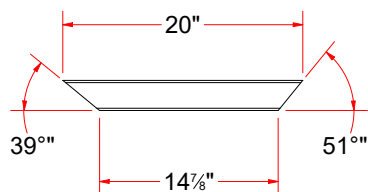


Plate #3/16"x 3 3/4"x 3 3/4"

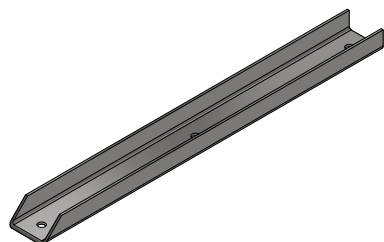
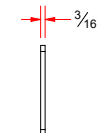
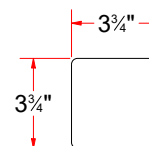
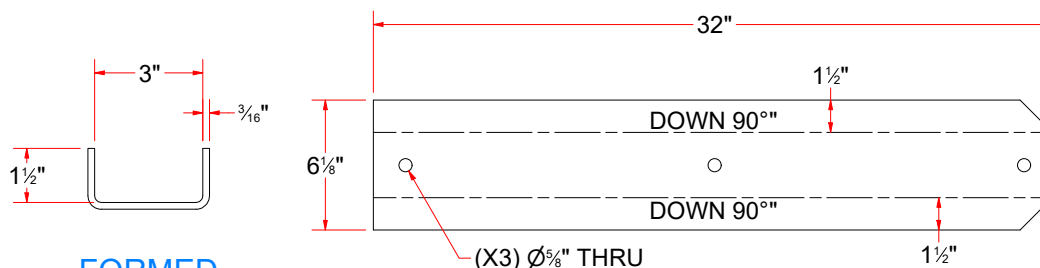


Plate #3/16" x 6 1/8" x 32" LG.



FORMED

FLAT PATTERN



AVW EQUIPMENT CO., INC.  
105 S. 9TH AVENUE  
MAYWOOD, IL 60153  
Tel: 708-343-7738 Fax: 708-343-9065  
WWW.AVWEQUIPMENT.COM

- COMPANY PROPRIETARY NOTE -

THIS DRAWING AND ITS DESIGNS ARE PROPERTY OF AVW EQUIPMENT CO. & IT IS NOT TO BE USED OR REPRODUCED WITHOUT THE PERMISSION FROM AVW CO.

DRAWN BY

Ljubomir

CUSTOMER: AVW EQUIPMENT CO.

CHECKED BY

PROJECT: SW2 - SIDE WASHERS

QTY

DESCRIPTION: Sq. Tube #7Ga x 2 1/2" x 2 1/2" x 76" LG.

RELEASE DATE

11/30/2021

PART NUMBER: SW2AAB

REV# 2

DIMENSION ARE IN INCHES & PROVIDED PRIOR TO SURFACE TREATMENTS, UNLESS NOTED.

SIZE A

EST WEIGHT:

SHEET 7 of 34

PATH: L:\Libraries\Productivity\Legs\Free Standing Side Washer Legs\Parts\SW2AAB.ipt

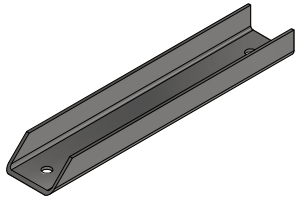
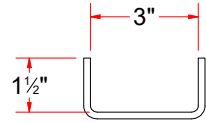
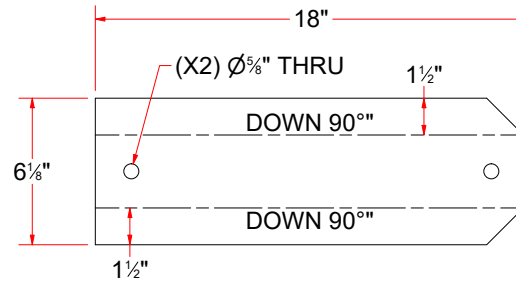


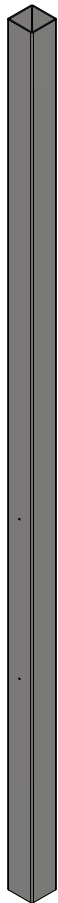
Plate #3/16" x 6 1/8" x 18" LG.



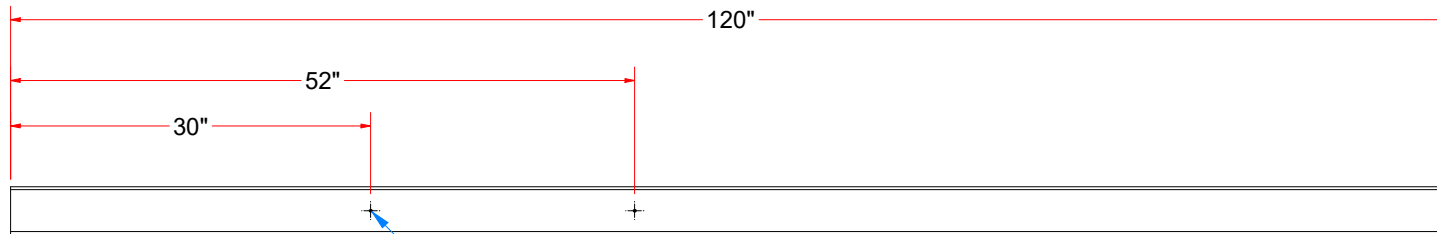
FORMED



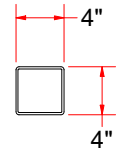
FLAT PATTERN



Sq. Tube #7Ga. x 4" x 4" x 120" LG.



(X2) 1/4-20 UNC - 2B"  
THRU ONE WALL



AVW EQUIPMENT CO., INC.  
105 S. 9TH AVENUE  
MAYWOOD, IL 60153  
Tel: 708-343-7738 Fax: 708-343-9065  
WWW.AVWEQUIPMENT.COM

**- COMPANY PROPRIETARY NOTE -**

THIS DRAWING AND ITS DESIGNS ARE PROPERTY OF AVW EQUIPMENT CO. &  
IT IS NOT TO BE USED OR REPRODUCED WITHOUT THE PERMISSION FROM AVW CO.

DRAWN BY

Ljubomir

CUSTOMER: AVW EQUIPMENT CO.

CHECKED BY

PROJECT: SW2 - SIDE WASHERS

QTY

DESCRIPTION: Plate #3/16" x 6 1/8" x 18" LG.

RELEASE  
DATE

11/30/2021

PART NUMBER: SW2AAE

REV# 2

DIMENSION ARE IN INCHES & PROVIDED PRIOR  
TO SURFACE TREATMENTS, UNLESS NOTED.

SIZE  
**A**

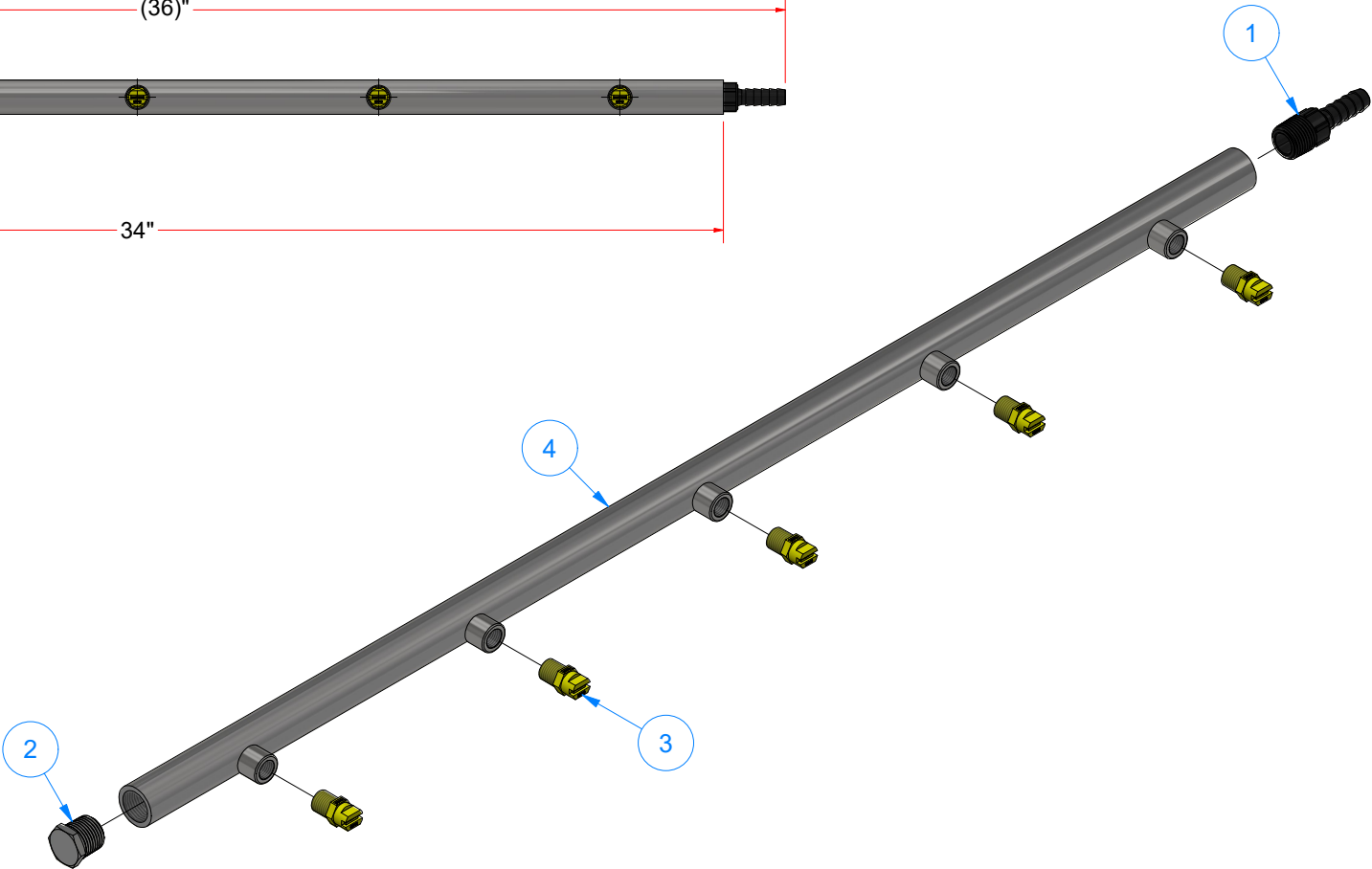
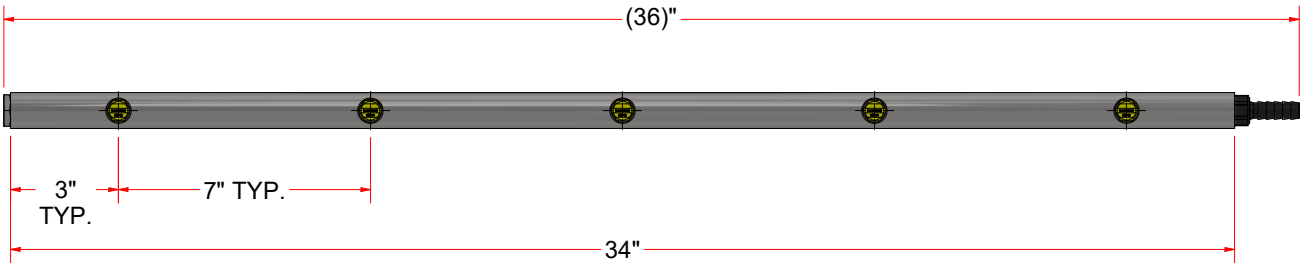
EST WEIGHT:

SHEET 8 of 34



WA1LA - Side Washer Manifold - Assembly

Parts List		
ITEM	QTY	DESCRIPTION
1	1	1/2" NPT Male x 1/2" Hose Barb
2	1	1/2" NPT SS Hollow Hex Plug
3	5	Nozzle - Yellow - 1/4" MNPT
4	1	Side Washer Manifold - Weldment

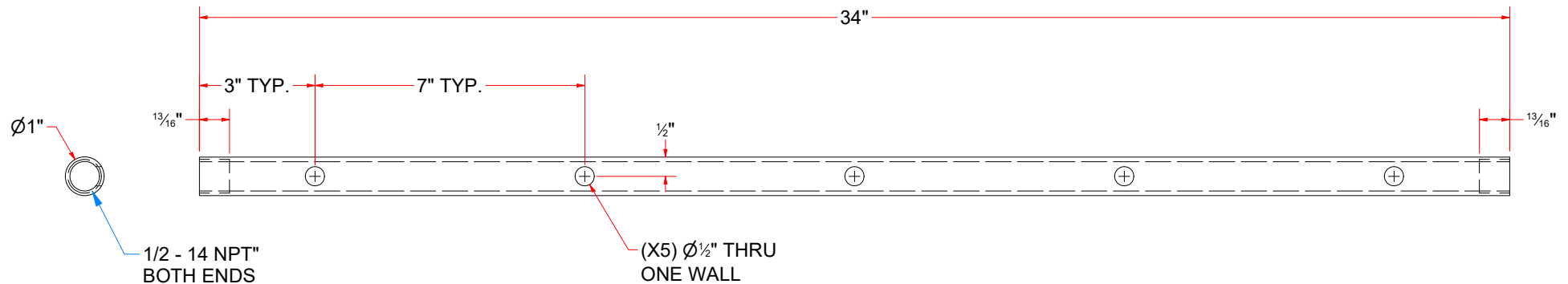


AVW EQUIPMENT CO., INC.  
105 S. 9TH AVENUE  
MAYWOOD, IL 60153  
Tel: 708-343-7738 Fax: 708-343-9065  
WWW.AVWEQUIPMENT.COM

- COMPANY PROPRIETARY NOTE -  
THIS DRAWING AND ITS DESIGNS ARE PROPERTY OF AVW EQUIPMENT CO. &  
IT IS NOT TO BE USED OR REPRODUCED WITHOUT THE PERMISSION FROM AVW CO.

DRAWN BY	Ljubomir	CUSTOMER: AVW EQUIPMENT CO.	
CHECKED BY		PROJECT: SW2 - SIDE WASHERS	
QTY		DESCRIPTION: Side Washer Manifold - Assembly	
RELEASE DATE	11/30/2021	PART NUMBER: WA1LA	REV# 2
DIMENSION ARE IN INCHES & PROVIDED PRIOR TO SURFACE TREATMENTS, UNLESS NOTED.		SIZE A	EST WEIGHT: 4 lbmass
PATH: L:\Libraries\Productivity\Manifolds\WA1LA - Side Water Manifold\WA1LA.jam		SHEET 9 of 34	

# WA1LAAA - Round Tubing(0.120 in) WALL x 1" OD x 0.760 in ID x 34" LG.



AVW EQUIPMENT CO., INC.  
105 S. 9TH AVENUE  
MAYWOOD, IL 60153  
Tel: 708-343-7738 Fax: 708-343-9065  
WWW.AVWEQUIPMENT.COM

## - COMPANY PROPRIETARY NOTE -

THIS DRAWING AND ITS DESIGNS ARE PROPERTY OF AVW EQUIPMENT CO. & IT IS NOT TO BE USED OR REPRODUCED WITHOUT THE PERMISSION FROM AVW CO.

DRAWN BY

Ljubomir

CUSTOMER: AVW EQUIPMENT CO.

CHECKED BY

PROJECT: SW2 - SIDE WASHERS

QTY

DESCRIPTION: Round Tubing(0.120 in) WALL x 1" OD x 0.760 in ID x 34" LG.

RELEASE DATE

11/30/2021

PART NUMBER: WA1LAAA

REV# 2

DIMENSION ARE IN INCHES & PROVIDED PRIOR TO SURFACE TREATMENTS, UNLESS NOTED.

SIZE  
A

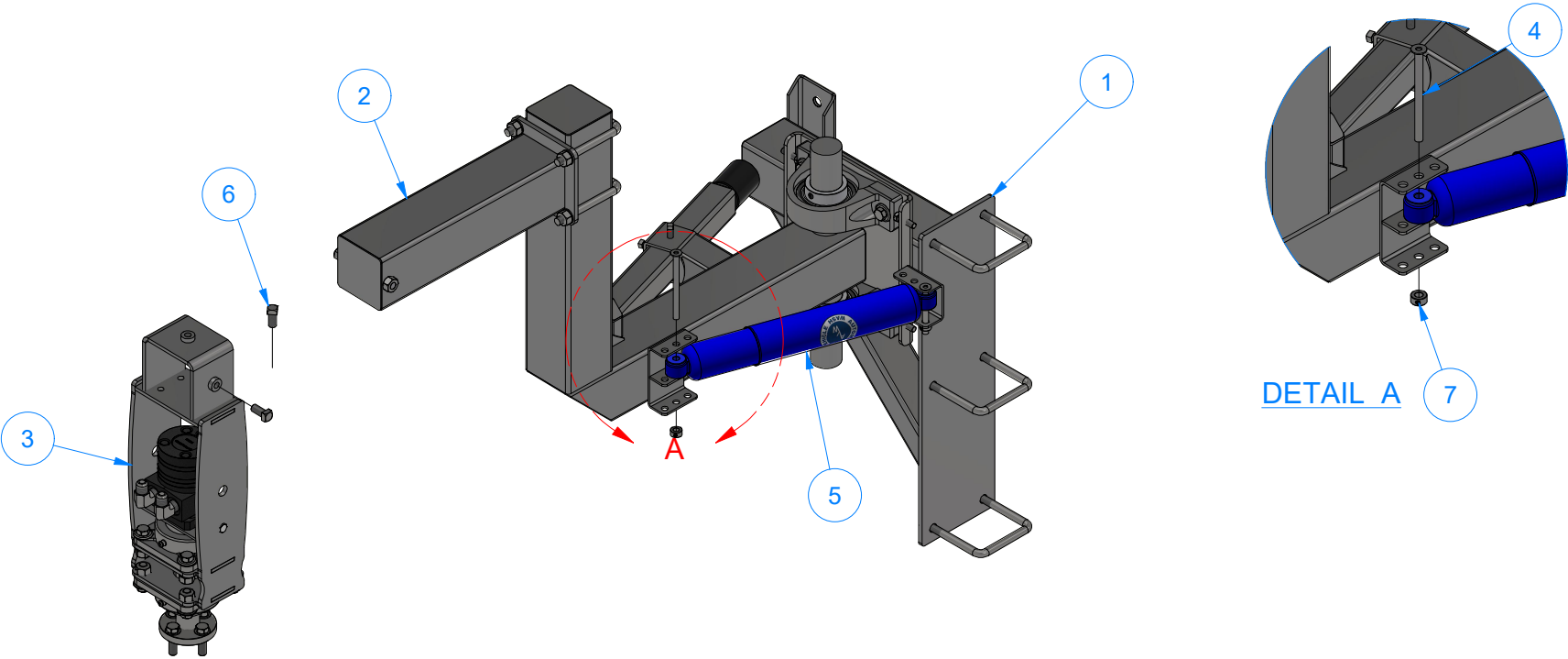
EST WEIGHT:

SHEET 10 of 34

PATH:L:\Libraries\Productivity\Manifolds\WA1LA - Side Water Manifold\Parts\WA1LAA - Side Water Manifold\_Weldment\Parts\WA1LAAA.ipt

SW2D - Side Washer [Driver]

Parts List		
ITEM	QTY	DESCRIPTION
1	1	Arm Mount - Driver Side
2	1	Dual setp-Up-Arm [Driver]
3	1	Brush Drive Assembly - Side Washer
4	1	Pin 3/8" x 5" LG
5	1	Shock Absorber W/ UHMW 3/8" ID
6	2	Square Bolt - 1/2"-13 UNC x 1"
7	1	3/8" Set Screw Collar

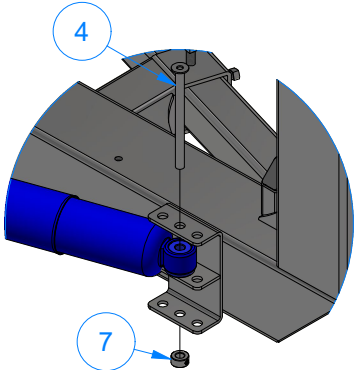
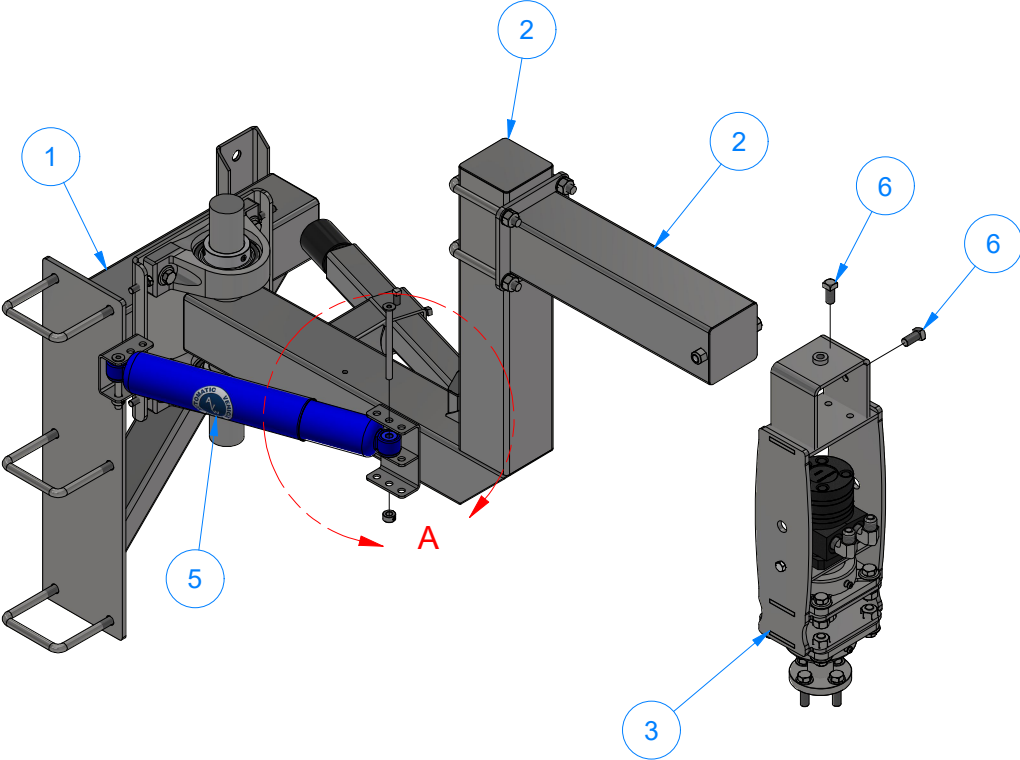


AVW EQUIPMENT CO., INC.  
105 S. 9TH AVENUE  
MAYWOOD, IL 60153  
Tel: 708-343-7738 Fax: 708-343-9065  
WWW.AVWEQUIPMENT.COM

- COMPANY PROPRIETARY NOTE -  
THIS DRAWING AND ITS DESIGNS ARE PROPERTY OF AVW EQUIPMENT CO. &  
IT IS NOT TO BE USED OR REPRODUCED WITHOUT THE PERMISSION FROM AVW CO.

DRAWN BY	Ljubomir	CUSTOMER: AVW EQUIPMENT CO.	
CHECKED BY		PROJECT: SW2 - SIDE WASHERS	
QTY		DESCRIPTION: Side Washer [Driver]	
RELEASE DATE	11/30/2021	PART NUMBER: SW2D	REV# 2
DIMENSION ARE IN INCHES & PROVIDED PRIOR TO SURFACE TREATMENTS, UNLESS NOTED.		SIZE A	EST WEIGHT: 235 lbmass
			SHEET 11 of 34

SW2E - Side Washer [Passenger]



DETAIL A

Parts List		
ITEM	QTY	DESCRIPTION
1	1	Arm Mount - Passenger Side
2	1	Dual Step-Up Arm [Passenger]
3	1	Brush Drive Assembly - Side Washer
4	1	Pin 3/8" x 5" LG
5	1	Shock Absorber W/ UHMW 3/8" ID
6	2	Square Bolt - 1/2"-13 UNC x 1"
7	1	3/8" Set Screw Collar

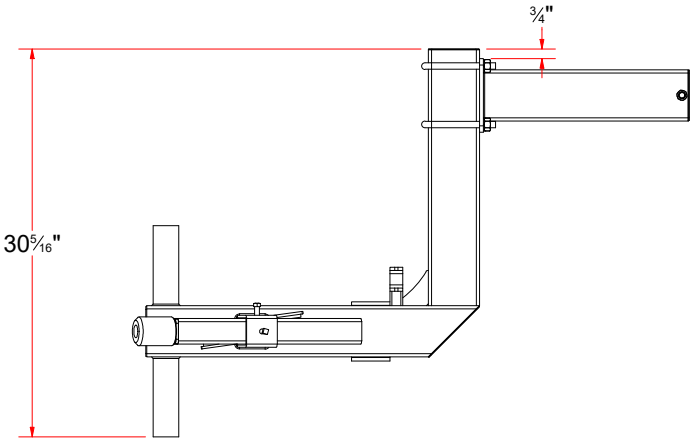
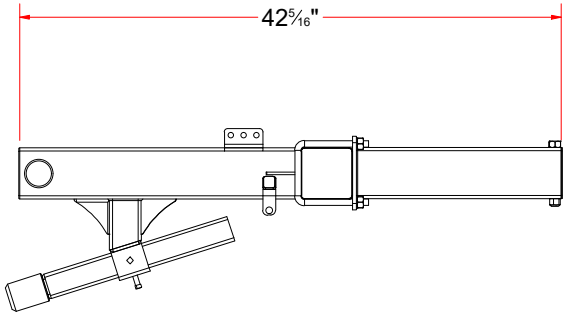


AVW EQUIPMENT CO., INC.  
105 S. 9TH AVENUE  
MAYWOOD, IL 60153  
Tel: 708-343-7738 Fax: 708-343-9065  
WWW.AVWEQUIPMENT.COM

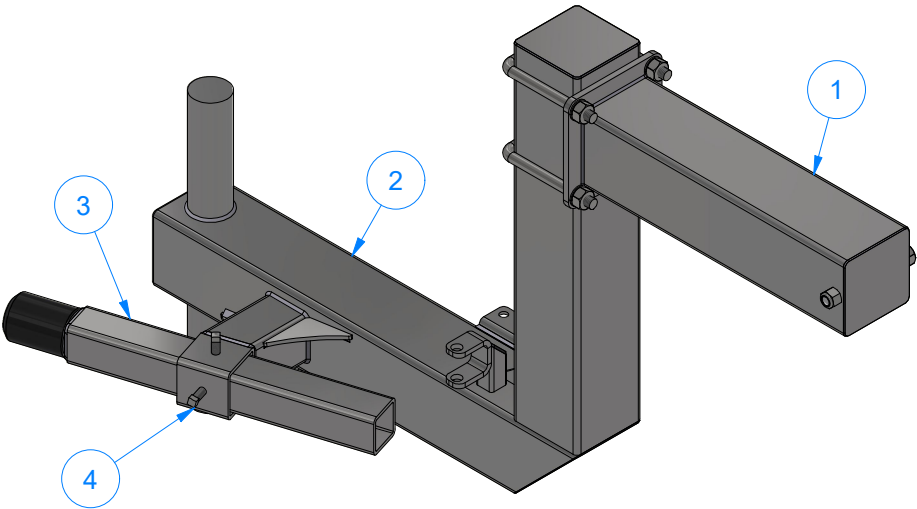
- COMPANY PROPRIETARY NOTE -  
THIS DRAWING AND ITS DESIGNS ARE PROPERTY OF AVW EQUIPMENT CO. &  
IT IS NOT TO BE USED OR REPRODUCED WITHOUT THE PERMISSION FROM AVW CO.

DRAWN BY	Ljubomir	CUSTOMER: AVW EQUIPMENT CO.		
CHECKED BY		PROJECT: SW2 - SIDE WASHERS		
QTY		DESCRIPTION: Side Washer [Passenger]		
RELEASE DATE	11/30/2021	PART NUMBER: SW2E		REV# 2
DIMENSION ARE IN INCHES & PROVIDED PRIOR TO SURFACE TREATMENTS, UNLESS NOTED.		SIZE A	EST WEIGHT: 235 lbmass	SHEET 12 of 34

SW2DB - DUAL STEP-UP ARM [DRIVER]



Parts List		
ITEM	QTY	DESCRIPTION
1	1	Adjustable Brush Mount
2	1	Dual Step-Up Arm - Weldment [Driver]
3	1	Rubber Bumper Stop Assembly
4	2	Square Bolt - 3/8"-16 x 3/4" L

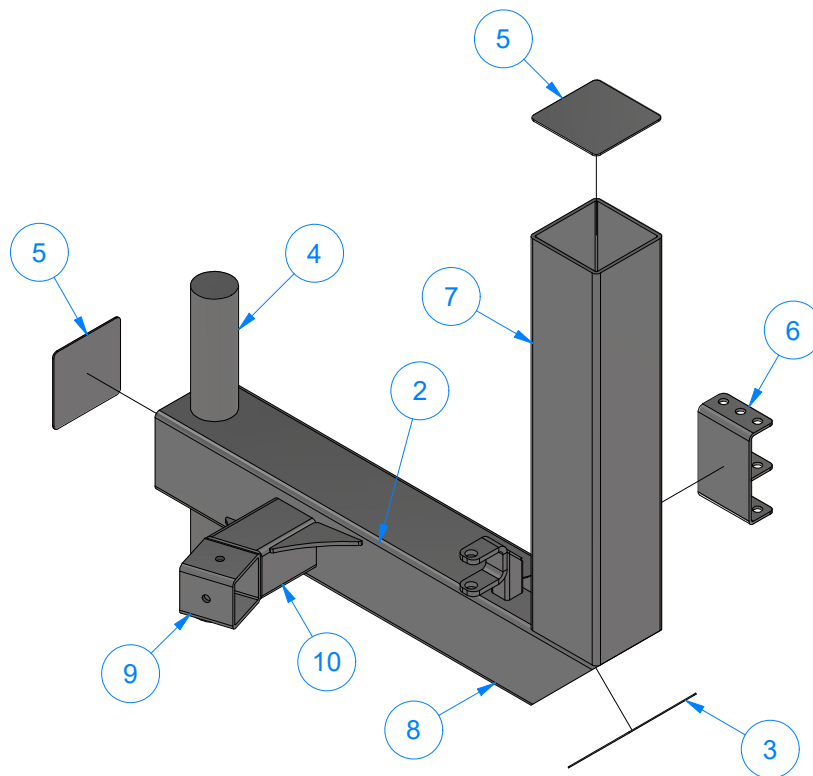
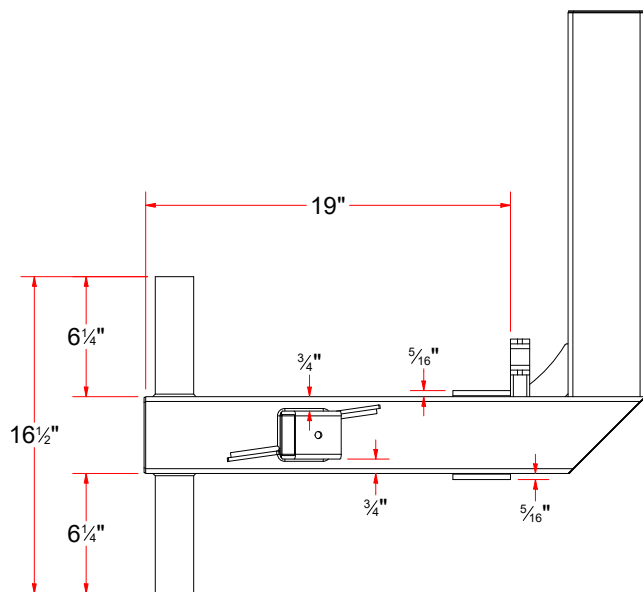
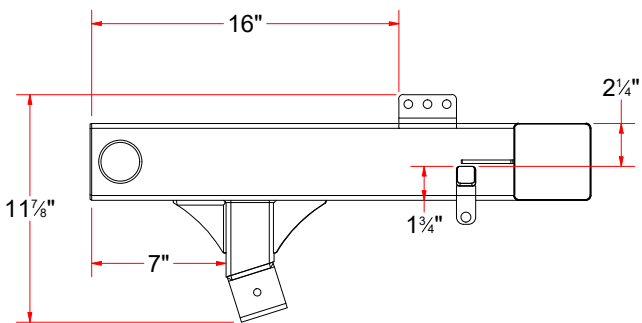


AVW EQUIPMENT CO., INC.  
105 S. 9TH AVENUE  
MAYWOOD, IL 60153  
Tel: 708-343-7738 Fax: 708-343-9065  
WWW.AVWEQUIPMENT.COM

- COMPANY PROPRIETARY NOTE -  
THIS DRAWING AND ITS DESIGNS ARE PROPERTY OF AVW EQUIPMENT CO. &  
IT IS NOT TO BE USED OR REPRODUCED WITHOUT THE PERMISSION FROM AVW CO.

DRAWN BY	Ljubomir	CUSTOMER: AVW EQUIPMENT CO.	
CHECKED BY		PROJECT: SW2 - SIDE WASHERS	
QTY		DESCRIPTION: DUAL STEP-UP ARM [DRIVER]	
RELEASE DATE	11/30/2021	PART NUMBER: SW2DB	REV# 2
DIMENSION ARE IN INCHES & PROVIDED PRIOR TO SURFACE TREATMENTS, UNLESS NOTED.		SIZE A	EST WEIGHT: 130 lbmass
			SHEET 13 of 34

# SW2DBA - Dual Step-Up Arm - Weldment [Driver]



Parts List		
ITEM	QTY	DESCRIPTION
2	3	Gusset #3/16" x 2-3_4x2-3_4
3	1	Plate #18Ga x 5-1_2 x 3-7_8
4	1	Shaft D 2" x 16 1/2"
5	2	Sq. SS Plate 14Ga x 3 15/16
6	1	Dual Shock Absorber Bracket
7	1	Sq. Tube 4" x 4" x 20" LG.
8	1	Sq. Tube 4" x 4" x 26" LG.
9	1	Sq.Tubing [7 Ga.] 4" x 2 1/2" LG.
10	1	Sq.Tubing [7 Ga.] 4" x 4" LG.
17	1	1/2" Clevis



AVW EQUIPMENT CO., INC.  
105 S. 9TH AVENUE  
MAYWOOD, IL 60153  
Tel: 708-343-7738 Fax: 708-343-9065  
WWW.AVWEQUIPMENT.COM

## - COMPANY PROPRIETARY NOTE -

THIS DRAWING AND ITS DESIGNS ARE PROPERTY OF AVW EQUIPMENT CO. & IT IS NOT TO BE USED OR REPRODUCED WITHOUT THE PERMISSION FROM AVW CO.

DRAWN BY

Ljubomir

CUSTOMER: AVW EQUIPMENT CO.

CHECKED BY

PROJECT: SW2 - SIDE WASHERS

QTY

DESCRIPTION: Dual Step-Up Arm - Weldment [Driver]

RELEASE DATE

11/30/2021

PART NUMBER: SW2DBA

REV# 2

DIMENSION ARE IN INCHES & PROVIDED PRIOR TO SURFACE TREATMENTS, UNLESS NOTED.

SIZE A

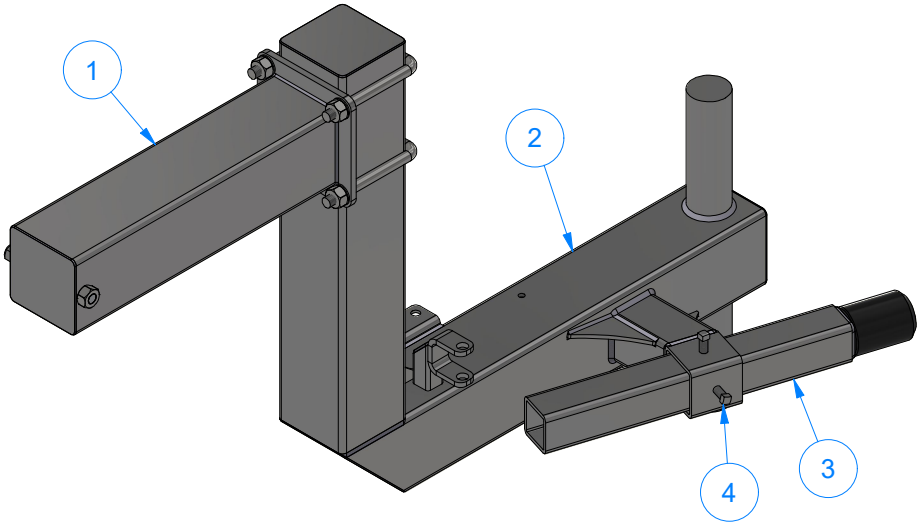
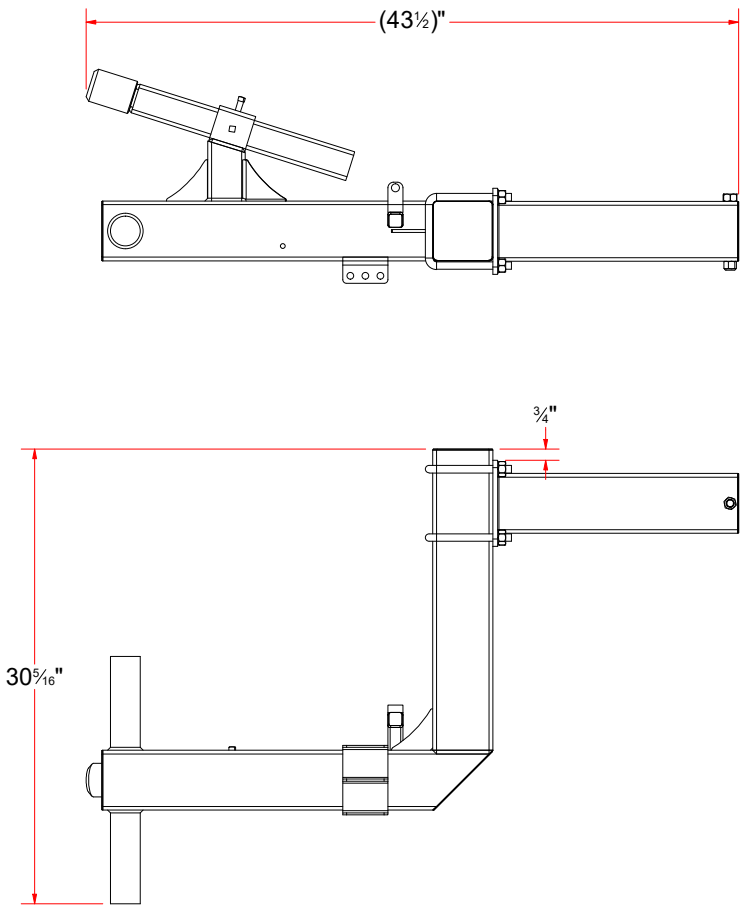
EST WEIGHT: 106 lbmass

SHEET 14 of 34

PATH: L:\Libraries\Productivity\Assembly Arms\Side Washer Arms\SW2 - Side Washer Assemblies\Parts\SW2DB - Dual Step-Up Arm [Driver Side]\Parts\SW2DBA.iam

SW2EB - Dual Step-Up Arm [Passenger]

Parts List		
ITEM	QTY	DESCRIPTION
1	1	Adjustable Brush Mount
2	1	Dual Step-Up Arm - Weldment [Passenger]
3	1	Rubber Bumper Stop Assembly
4	2	Square Bolt - 3/8"-16 x 3/4" L

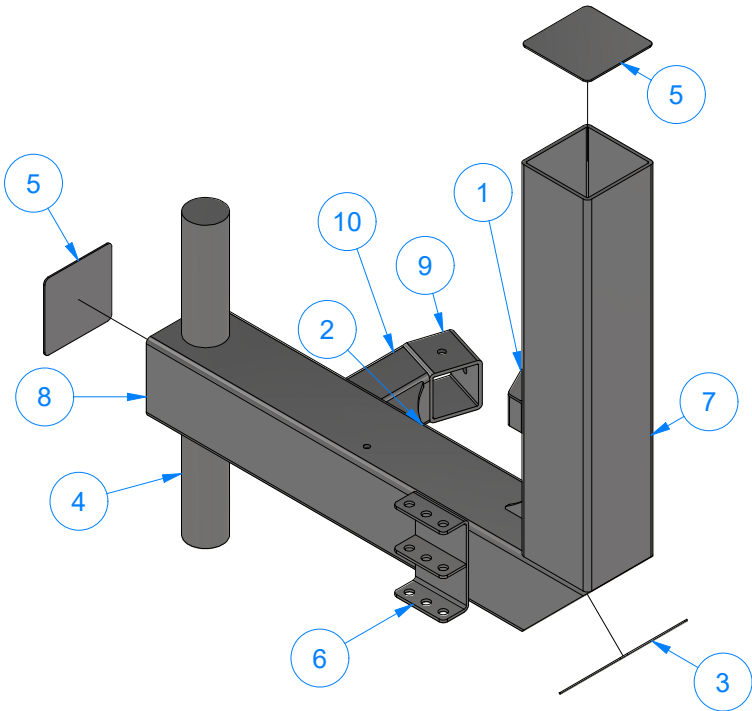
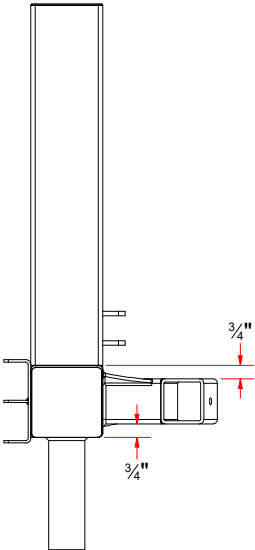
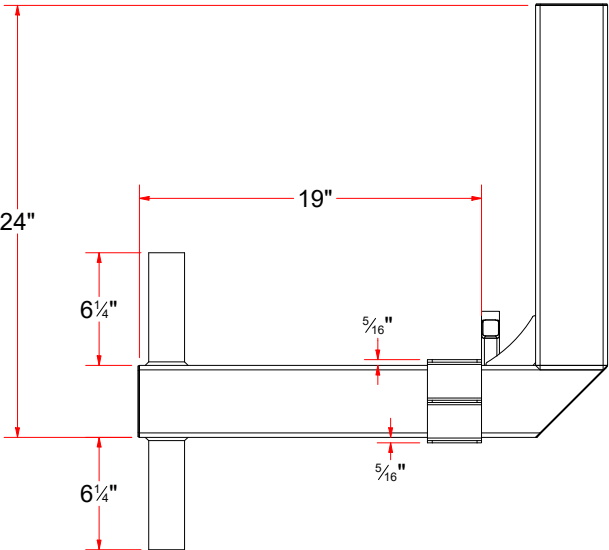
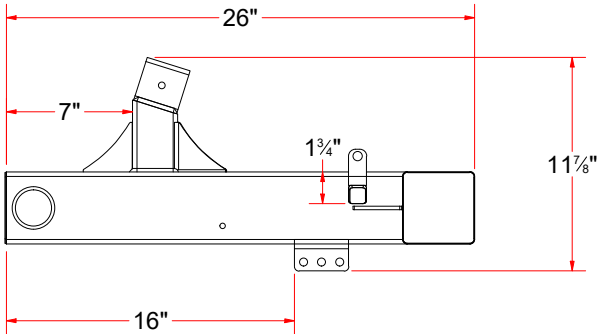


AVW EQUIPMENT CO., INC.  
105 S. 9TH AVENUE  
MAYWOOD, IL 60153  
Tel: 708-343-7738 Fax: 708-343-9065  
WWW.AVWEQUIPMENT.COM

- COMPANY PROPRIETARY NOTE -  
THIS DRAWING AND ITS DESIGNS ARE PROPERTY OF AVW EQUIPMENT CO. &  
IT IS NOT TO BE USED OR REPRODUCED WITHOUT THE PERMISSION FROM AVW CO.

DRAWN BY	Ljubomir	CUSTOMER: AVW EQUIPMENT CO.	
CHECKED BY		PROJECT: SW2 - SIDE WASHERS	
QTY		DESCRIPTION: Dual Step-Up Arm [Passenger]	
RELEASE DATE	11/30/2021	PART NUMBER: SW2EB	REV# 2
DIMENSION ARE IN INCHES & PROVIDED PRIOR TO SURFACE TREATMENTS, UNLESS NOTED.		SIZE A	EST WEIGHT: 109 lbmass
			SHEET 15 of 34

SW2EBA - Dual Step-Up Arm - Weldment [Passenger]



Parts List		
ITEM	QTY	DESCRIPTION
1	1	1/2" Clevis
2	3	Gusset #3/16" x 2-3_4x2-3_4
3	1	Plate #18Ga x 5-1_2 x 3-7_8
4	1	Shaft D 2" x 16 1/2"
5	2	Sq. SS Plate 14Ga x 3 15/16
6	1	Dual Shock Absorber Bracket
7	1	Sq. Tube 4" x 4" x 20" LG.
8	1	Sq. Tube 4" x 4" x 26" LG.
9	1	Sq.Tubing [7 Ga.] 4" x 2 1/2" LG.
10	1	Sq.Tubing [7 Ga.] 4" x 4" LG.

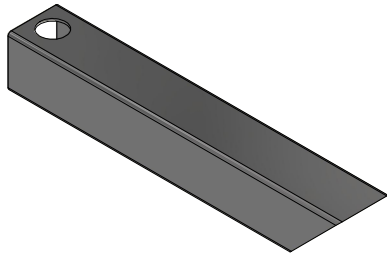


AVW EQUIPMENT CO., INC.  
105 S. 9TH AVENUE  
MAYWOOD, IL 60153  
Tel: 708-343-7738 Fax: 708-343-9065  
WWW.AVWEQUIPMENT.COM

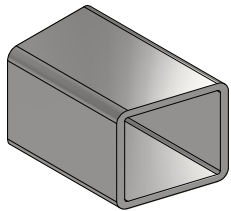
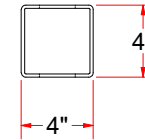
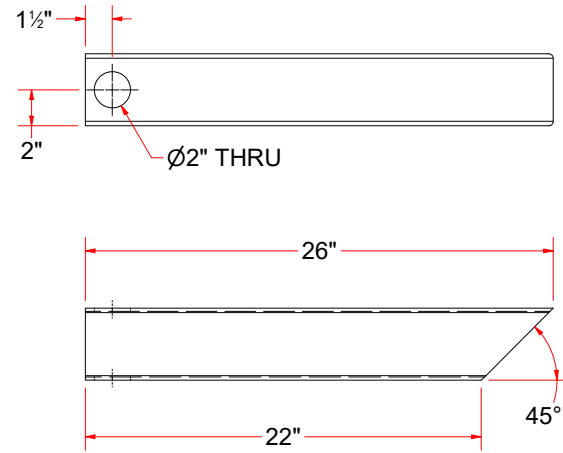
- COMPANY PROPRIETARY NOTE -  
THIS DRAWING AND ITS DESIGNS ARE PROPERTY OF AVW EQUIPMENT CO. &  
IT IS NOT TO BE USED OR REPRODUCED WITHOUT THE PERMISSION FROM AVW CO.

DRAWN BY	Ljubomir	CUSTOMER: AVW EQUIPMENT CO.	
CHECKED BY		PROJECT: SW2 - SIDE WASHERS	
QTY		DESCRIPTION: Dual Step-Up Arm - Weldment [Passenger]	
RELEASE DATE	11/30/2021	PART NUMBER: SW2EBA	REV# 2
DIMENSION ARE IN INCHES & PROVIDED PRIOR TO SURFACE TREATMENTS, UNLESS NOTED.		SIZE A	SHEET 16 of 34
		EST WEIGHT: 106 lbmass	

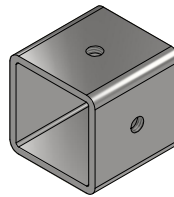
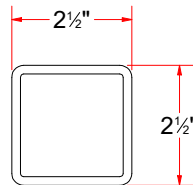
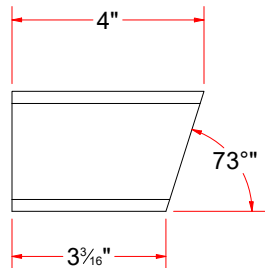




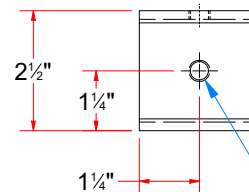
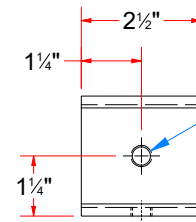
Sq. Tube 4" x 4" x 26" LG



Sq. Tubing [7 Ga.] 4" x 4" LG.



Sq. Tubing [7 Ga.] 4" x 2 1/2" LG.



AVW EQUIPMENT CO., INC.  
105 S. 9TH AVENUE  
MAYWOOD, IL 60153  
Tel: 708-343-7738 Fax: 708-343-9065  
WWW.AVWEQUIPMENT.COM

**- COMPANY PROPRIETARY NOTE -**

THIS DRAWING AND ITS DESIGNS ARE PROPERTY OF AVW EQUIPMENT CO. & IT IS NOT TO BE USED OR REPRODUCED WITHOUT THE PERMISSION FROM AVW CO.

DRAWN BY

Ljubomir

CUSTOMER: AVW EQUIPMENT CO.

CHECKED BY

PROJECT: SW2 - SIDE WASHERS

QTY

DESCRIPTION: Sq. Tube 4" x 4" x 26" LG

RELEASE DATE

11/30/2021

PART NUMBER: SWA1EAA-5950

REV# 2

DIMENSION ARE IN INCHES & PROVIDED PRIOR TO SURFACE TREATMENTS, UNLESS NOTED.

SIZE  
**A**

EST WEIGHT:

SHEET 17 of 34

PATH: L:\Libraries\Productivity\Assembly Arms\Side Washer Arms\SW2 - Side Washer Assemblies\Parts\SW2EB - Dual Step-Up Arm [Passenger Side]\Parts\SWA1EBAA - 4in x 4in x 26in Tube.ipt

Sq. SS Plate 14Ga x 3 15/16

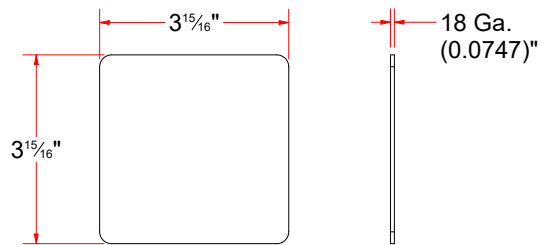
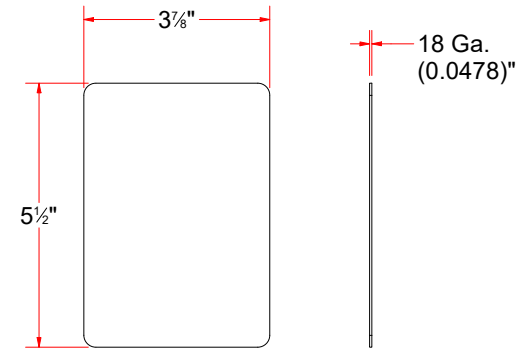
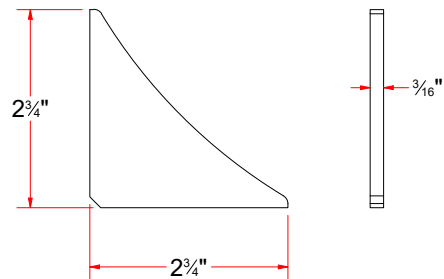


Plate #18Ga x 5-1\_2 x 3-7\_8



Gusset #3/16" x 2-3\_4x2-3\_4



AVW EQUIPMENT CO., INC.  
105 S. 9TH AVENUE  
MAYWOOD, IL 60153  
Tel: 708-343-7738 Fax: 708-343-9065  
WWW.AVWEQUIPMENT.COM

**- COMPANY PROPRIETARY NOTE -**

THIS DRAWING AND ITS DESIGNS ARE PROPERTY OF AVW EQUIPMENT CO. & IT IS NOT TO BE USED OR REPRODUCED WITHOUT THE PERMISSION FROM AVW CO.

DRAWN BY

Ljubomir

CUSTOMER: AVW EQUIPMENT CO.

CHECKED BY

PROJECT: SW2 - SIDE WASHERS

QTY

DESCRIPTION: Gusset #3/16" x 2-3\_4x2-3\_4

RELEASE DATE

11/30/2021

PART NUMBER: GUSSS187X0275X0275

REV# 2

DIMENSION ARE IN INCHES & PROVIDED PRIOR TO SURFACE TREATMENTS, UNLESS NOTED.

SIZE  
**A**

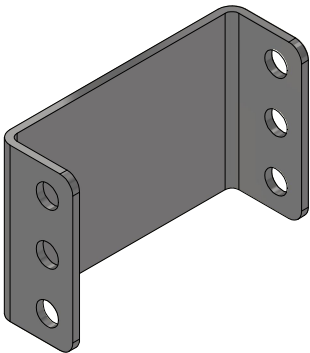
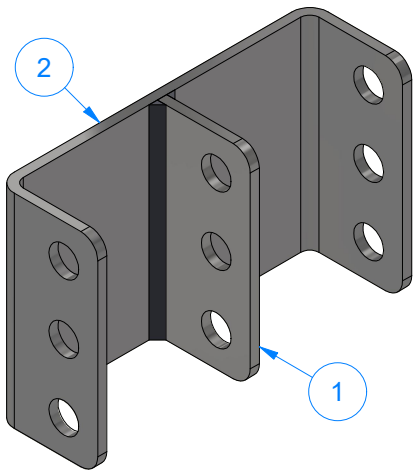
EST WEIGHT:

SHEET 18 of 34

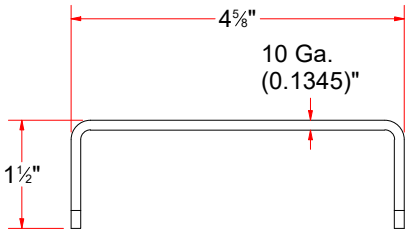
PATH:L:\Libraries\AVW Components\Plates\Gussetts\Wrap Arm Rubber Stopper Gusset (2-3\_4 x 2-3\_4).ipt

SAB1 - Dual Shock Absorber Bracket

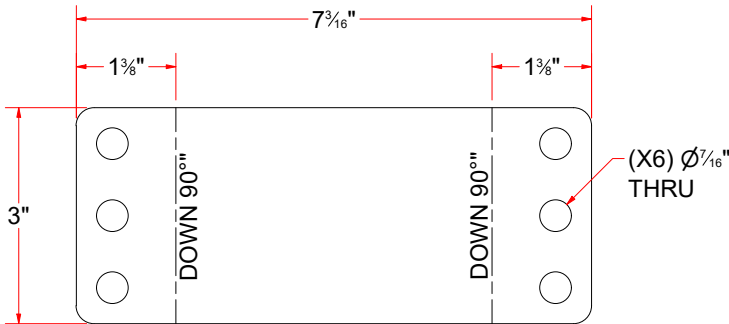
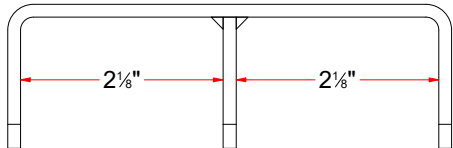
Parts List		
ITEM	QTY	DESCRIPTION
1	1	SS S.M#10Ga x 1 3/8" x 3" LG.
2	1	SS S.M #10Gax 3" x 7 3/16" LG.



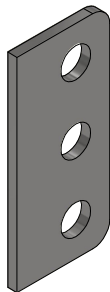
SS S.M #10Gax 3" x 7 3/16" LG.



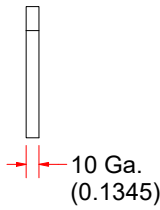
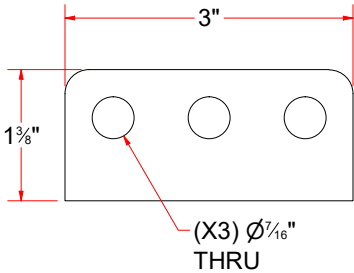
FORMED



FLAT PATTERN



SS S.M#10Ga x 1 3/8" x 3" LG.

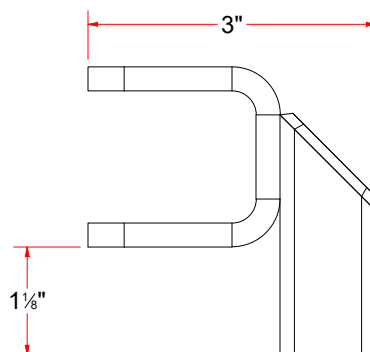
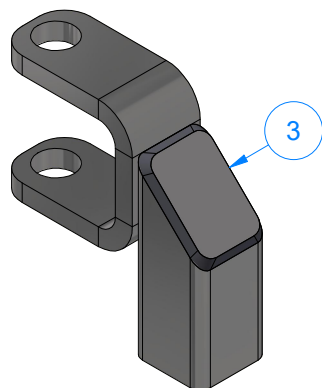
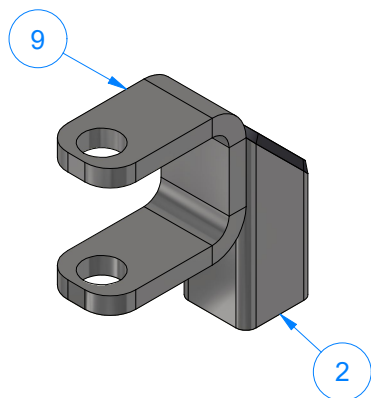


AVW EQUIPMENT CO., INC.  
105 S. 9TH AVENUE  
MAYWOOD, IL 60153  
Tel: 708-343-7738 Fax: 708-343-9065  
WWW.AVWEQUIPMENT.COM

- COMPANY PROPRIETARY NOTE -  
THIS DRAWING AND ITS DESIGNS ARE PROPERTY OF AVW EQUIPMENT CO. &  
IT IS NOT TO BE USED OR REPRODUCED WITHOUT THE PERMISSION FROM AVW CO.

DRAWN BY	Ljubomir	CUSTOMER: AVW EQUIPMENT CO.	
CHECKED BY		PROJECT: SW2 - SIDE WASHERS	
QTY		DESCRIPTION: Dual Shock Absorber Bracket	
RELEASE DATE	11/30/2021	PART NUMBER: SAB1	REV# 2
DIMENSION ARE IN INCHES & PROVIDED PRIOR TO SURFACE TREATMENTS, UNLESS NOTED.		SIZE A	EST WEIGHT: 52 lbmass
			SHEET 19 of 34

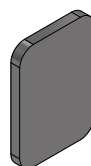
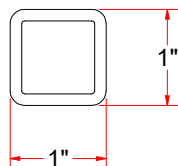
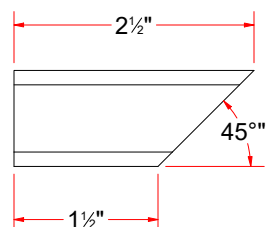
# AVWCC - 1/2" Clevis



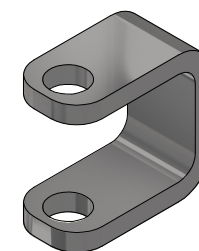
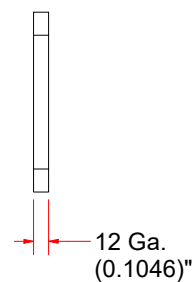
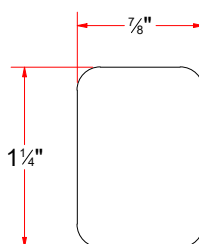
Parts List		
ITEM	QTY	DESCRIPTION
2	1	Sq. Tubing 1" x 2 1/2" LG.
3	1	Steel Plate #12Gax7/8"x1 1/4"
9	1	Mount, for air cylinder



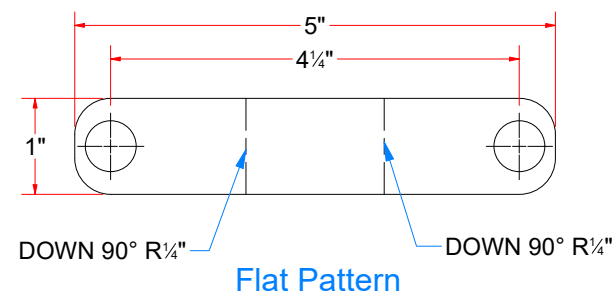
Sq. Tubing 1" x 2 1/2" LG.



Steel Plate #12Gax7/8"x1 1/4"



Mount, for air cylinder



AVW EQUIPMENT CO., INC.  
105 S. 9TH AVENUE  
MAYWOOD, IL 60153  
Tel: 708-343-7738 Fax: 708-343-9065  
WWW.AVWEQUIPMENT.COM

## - COMPANY PROPRIETARY NOTE -

THIS DRAWING AND ITS DESIGNS ARE PROPERTY OF AVW EQUIPMENT CO. & IT IS NOT TO BE USED OR REPRODUCED WITHOUT THE PERMISSION FROM AVW CO.

DRAWN BY

Ljubomir

CUSTOMER: AVW EQUIPMENT CO.

CHECKED BY

PROJECT: SW2 - SIDE WASHERS

QTY

DESCRIPTION: 1/2" Clevis

RELEASE DATE

11/30/2021

PART NUMBER: AVWCC

REV# 2

DIMENSION ARE IN INCHES & PROVIDED PRIOR TO SURFACE TREATMENTS, UNLESS NOTED.

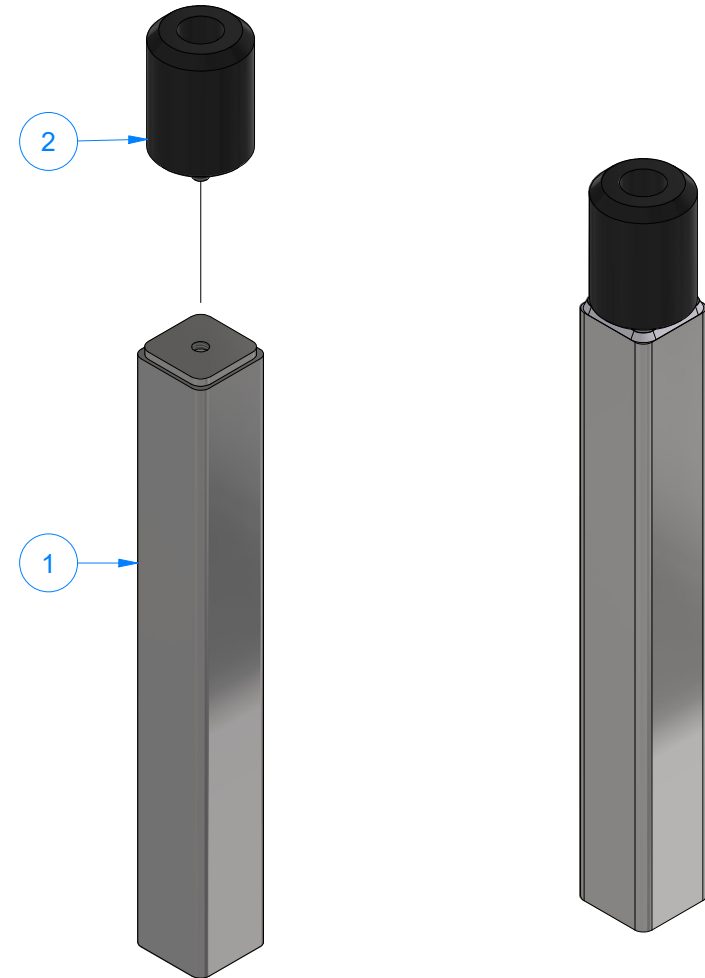
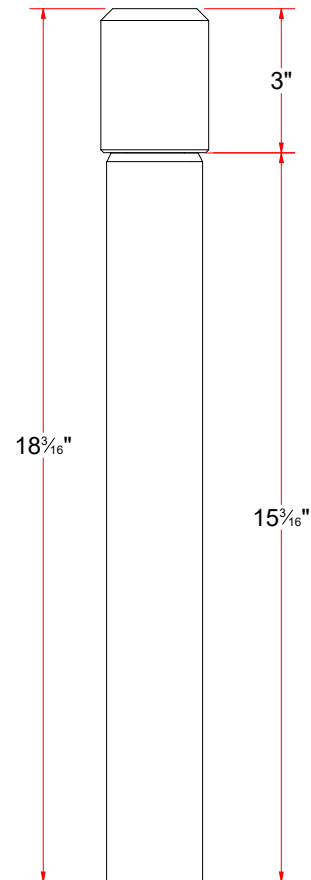
SIZE  
A

EST WEIGHT: 1 lbmass

SHEET 20 of 34

# WA1DB - Rubber Bumper Stop Assembly

Parts List		
ITEM	QTY	DESCRIPTION
1	1	Bumber Stop Arm Weld Assy
2	1	Rubber Bump, Long



AVW EQUIPMENT CO., INC.  
105 S. 9TH AVENUE  
MAYWOOD, IL 60153  
Tel: 708-343-7738 Fax: 708-343-9065  
WWW.AVWEQUIPMENT.COM

## - COMPANY PROPRIETARY NOTE -

THIS DRAWING AND ITS DESIGNS ARE PROPERTY OF AVW EQUIPMENT CO. & IT IS NOT TO BE USED OR REPRODUCED WITHOUT THE PERMISSION FROM AVW CO.

DRAWN BY

Ljubomir

CUSTOMER: AVW EQUIPMENT CO.

CHECKED BY

PROJECT: SW2 - SIDE WASHERS

QTY

DESCRIPTION: Rubber Bumper Stop Assembly

RELEASE DATE

11/30/2021

PART NUMBER: WA1DB

REV# 2

DIMENSION ARE IN INCHES & PROVIDED PRIOR TO SURFACE TREATMENTS, UNLESS NOTED.

SIZE  
A

EST WEIGHT: 6 lbmass

SHEET 21 of 34

PATH:L:\Libraries\Parts\Rubber Bump Stop\Rubber Bumper Stopper.iam

# WA1DBA - Bumber Stop Arm Weld Assy

Parts List		
ITEM	QTY	DESCRIPTION
1	1	Sq. Tube 2" x 15"L
2	1	Plate #3/16" x 1-7/8" x 1-7/8"

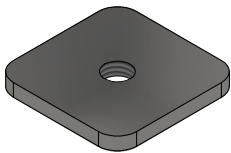
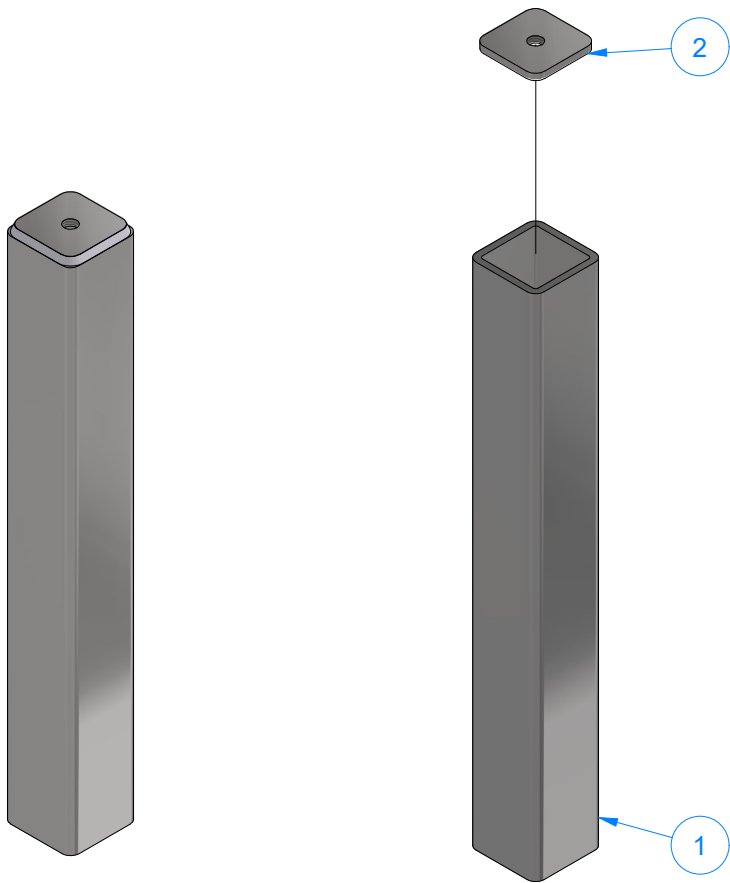
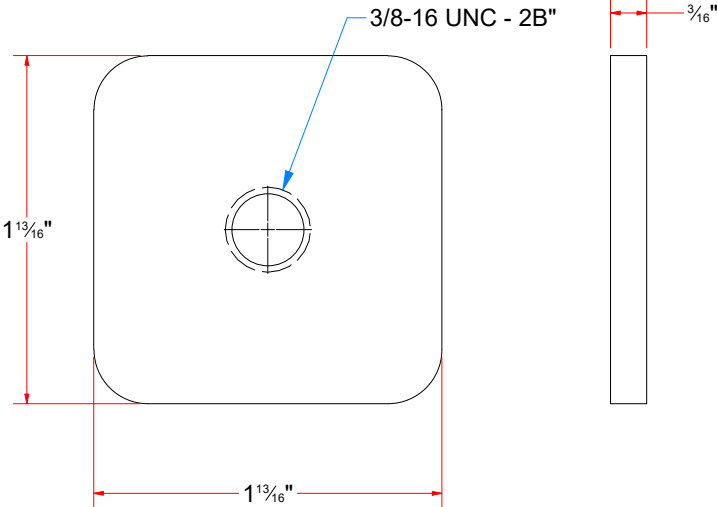


Plate #3/16" x 1-7/8" x 1-7/8"



AVW EQUIPMENT CO., INC.  
105 S. 9TH AVENUE  
MAYWOOD, IL 60153  
Tel: 708-343-7738 Fax: 708-343-9065  
WWW.AVWEQUIPMENT.COM

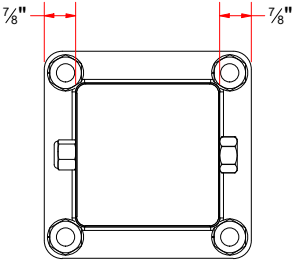
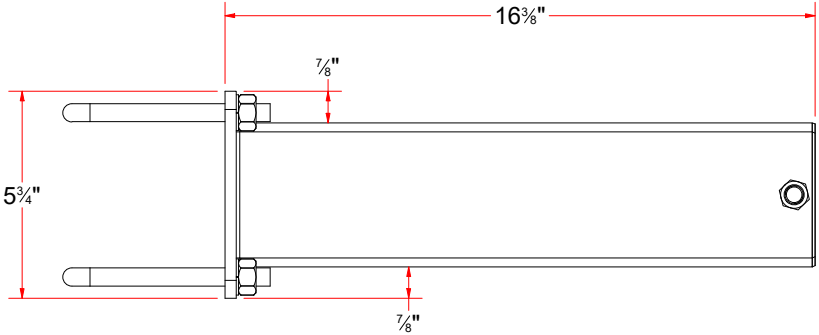
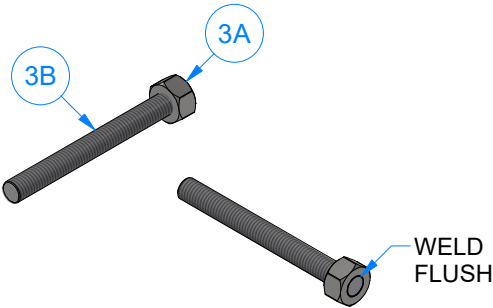
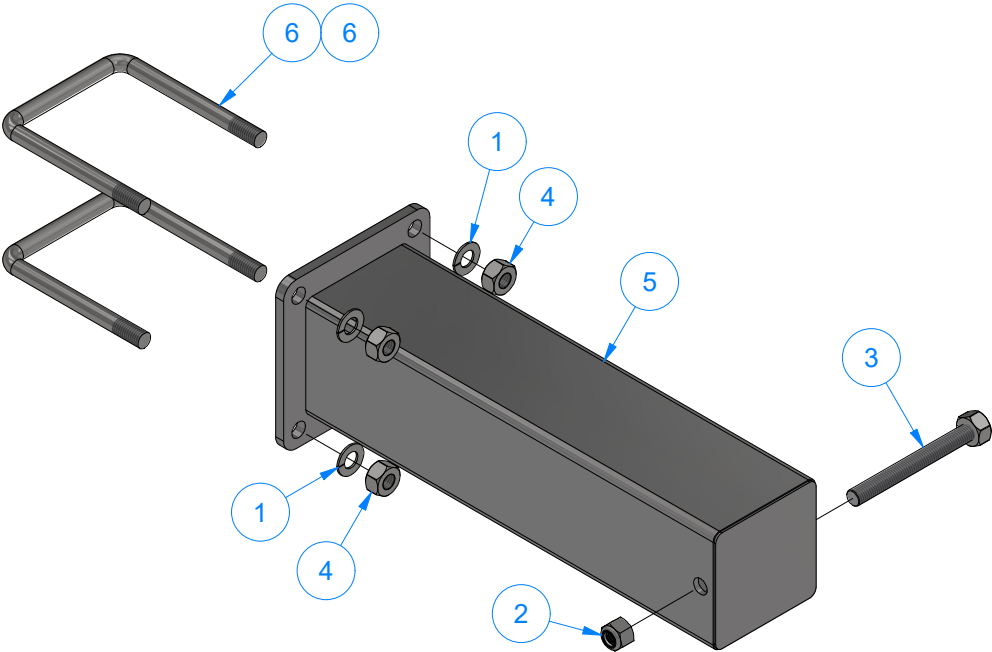
- COMPANY PROPRIETARY NOTE -  
THIS DRAWING AND ITS DESIGNS ARE PROPERTY OF AVW EQUIPMENT CO. &  
IT IS NOT TO BE USED OR REPRODUCED WITHOUT THE PERMISSION FROM AVW CO.

DRAWN BY	Ljubomir	CUSTOMER: AVW EQUIPMENT CO.	
CHECKED BY		PROJECT: SW2 - SIDE WASHERS	
QTY		DESCRIPTION: Bumber Stop Arm Weld Assy	
RELEASE DATE	11/30/2021	PART NUMBER: WA1DBA	REV# 2
DIMENSION ARE IN INCHES & PROVIDED PRIOR TO SURFACE TREATMENTS, UNLESS NOTED.		SIZE A	SHEET 22 of 34

SW2DBB - Adjustable Brush Mount

Parts List		
ITEM	QTY	DESCRIPTION
1	4	1/2" Split Lock Washer
2	1	1/2"-13 Nylon Lock Nut
3	1	Threaded Rod w/ Nut, Weldment
4	4	1/2-13 Hex Nut
5	1	Adjustable Brush Mount - Weldment
6	2	Square U Bolt D 1/2" x 4" x 6 1/4" LG

Parts List		
ITEM	QTY	DESCRIPTION
3A	1	1/2-13 Hex Nut
3B	1	Threaded Rod 1/2" X 5" LG.

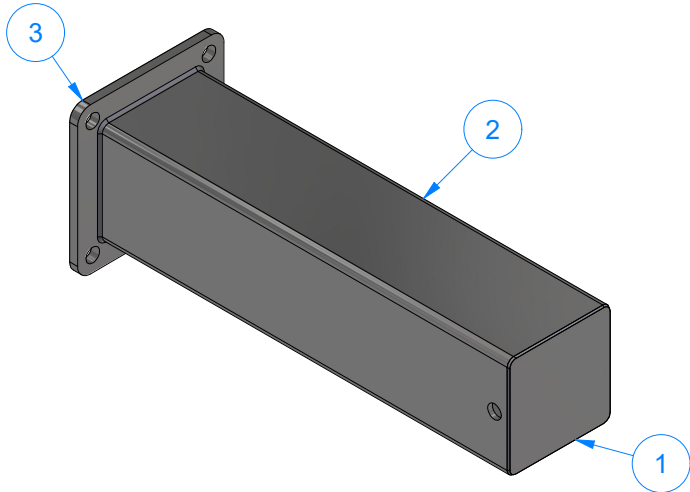


AVW EQUIPMENT CO., INC.  
105 S. 9TH AVENUE  
MAYWOOD, IL 60153  
Tel: 708-343-7738 Fax: 708-343-9065  
WWW.AVWEQUIPMENT.COM

**- COMPANY PROPRIETARY NOTE -**  
THIS DRAWING AND ITS DESIGNS ARE PROPERTY OF AVW EQUIPMENT CO. &  
IT IS NOT TO BE USED OR REPRODUCED WITHOUT THE PERMISSION FROM AVW CO.

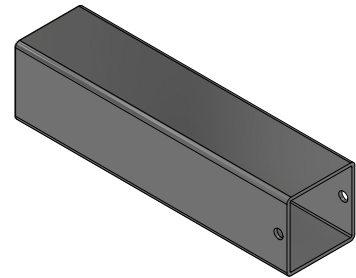
DRAWN BY	Ljubomir	CUSTOMER: AVW EQUIPMENT CO.	
CHECKED BY		PROJECT: SW2 - SIDE WASHERS	
QTY		DESCRIPTION: Adjustable Brush Mount	
RELEASE DATE	11/30/2021	PART NUMBER: SW2DBB	REV# 2
DIMENSION ARE IN INCHES & PROVIDED PRIOR TO SURFACE TREATMENTS, UNLESS NOTED.		SIZE A	EST WEIGHT:
			SHEET 23 of 34

SW2DBBA - Adjustable Brush Mount - Weldment

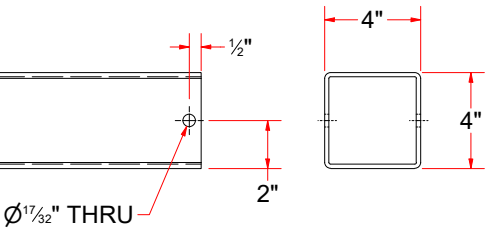


Sq. SS Plate 14Ga x 3 15/16

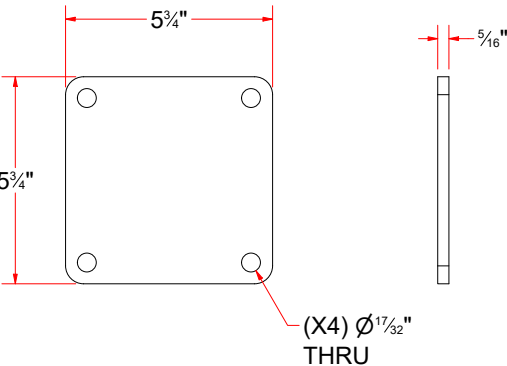
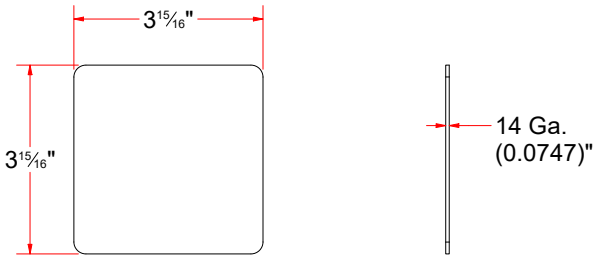
SS Plate #5/16" x 5 3/4" x 5 3/4"



Sq. Tube 4" x 4" x 16" LG



Parts List		
ITEM	QTY	DESCRIPTION
1	1	Sq. SS Plate 14Ga x 3 15/16
2	1	Sq. Tube 4" x 4" x 16" LG
3	1	SS Plate #5/16" x 5 3/4" x 5 3/4"



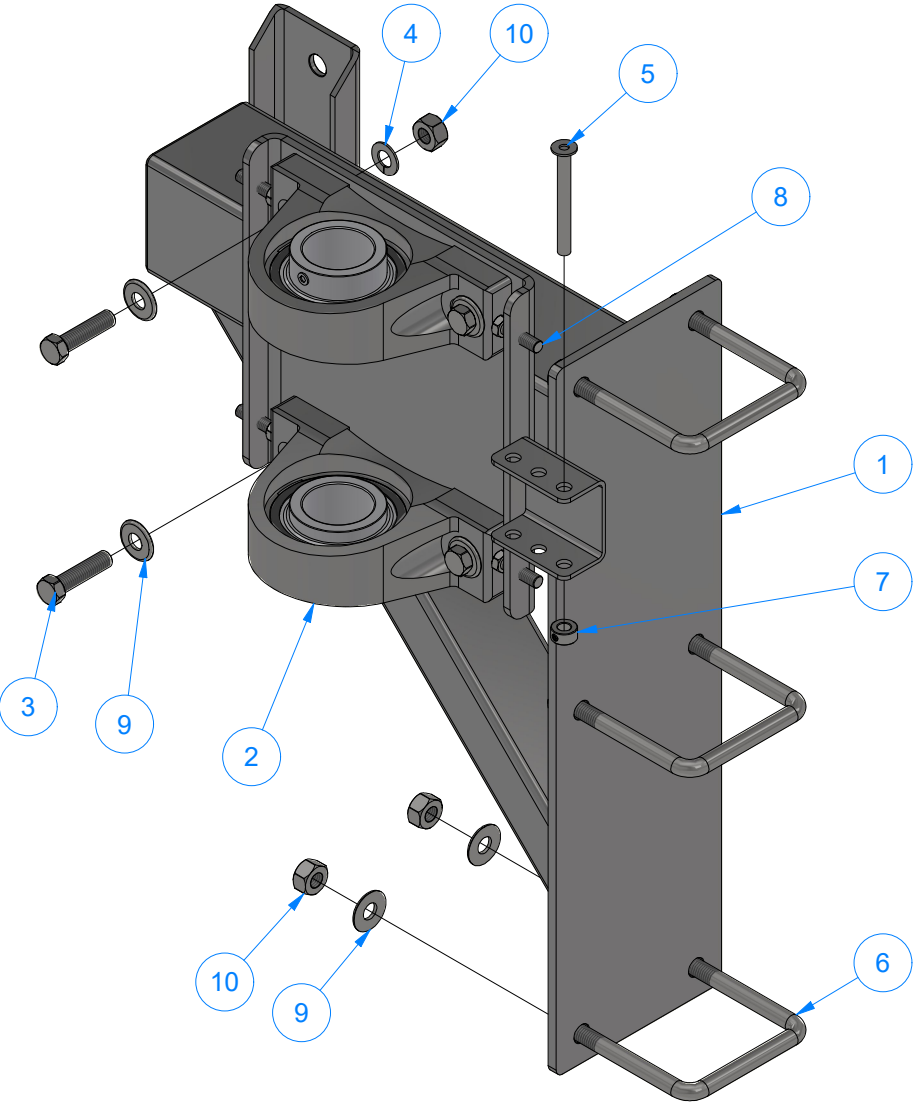
AVW EQUIPMENT CO., INC.  
105 S. 9TH AVENUE  
MAYWOOD, IL 60153  
Tel: 708-343-7738 Fax: 708-343-9065  
WWW.AVWEQUIPMENT.COM

- COMPANY PROPRIETARY NOTE -  
THIS DRAWING AND ITS DESIGNS ARE PROPERTY OF AVW EQUIPMENT CO. &  
IT IS NOT TO BE USED OR REPRODUCED WITHOUT THE PERMISSION FROM AVW CO.

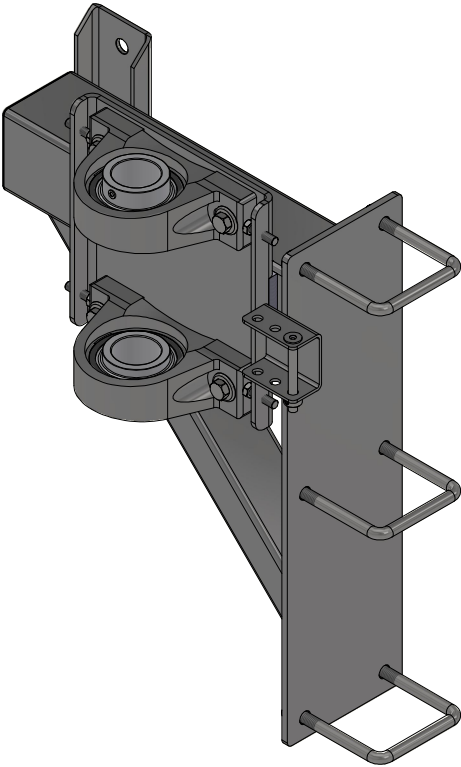
DRAWN BY	Ljubomir	CUSTOMER: AVW EQUIPMENT CO.	
CHECKED BY		PROJECT: SW2 - SIDE WASHERS	
QTY		DESCRIPTION: Adjustable Brush Mount - Weldment	
RELEASE DATE	11/30/2021	PART NUMBER: SW2DBBA	REV# 2
DIMENSION ARE IN INCHES & PROVIDED PRIOR TO SURFACE TREATMENTS, UNLESS NOTED.		SIZE A	EST WEIGHT: 15.726 lbmass
			SHEET 24 of 34



SW2DA - Arm Mount - Driver Side



Parts List		
ITEM	QTY	DESCRIPTION
1	1	Side Washer Arm Mount - Weldment [Driver]
2	2	2" Pillow Block
3	4	1/2"-13 x 2" L Hex Screw
4	4	1/2" Split Lock Washer
5	1	Pin 3/8" x 3 1/2" LG
6	3	Square U Bolt D 1/2" x 4" x 5" LG
7	1	3/8" Set Screw Collar
8	4	3/8" - 16 x 1 1/4" UNC Hex Screw
9	10	1/2" Flat Washer
10	10	1/2-13 Hex Nut



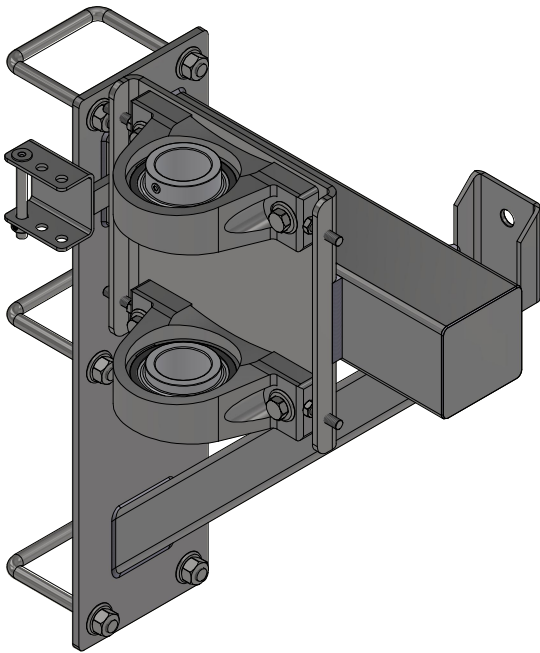
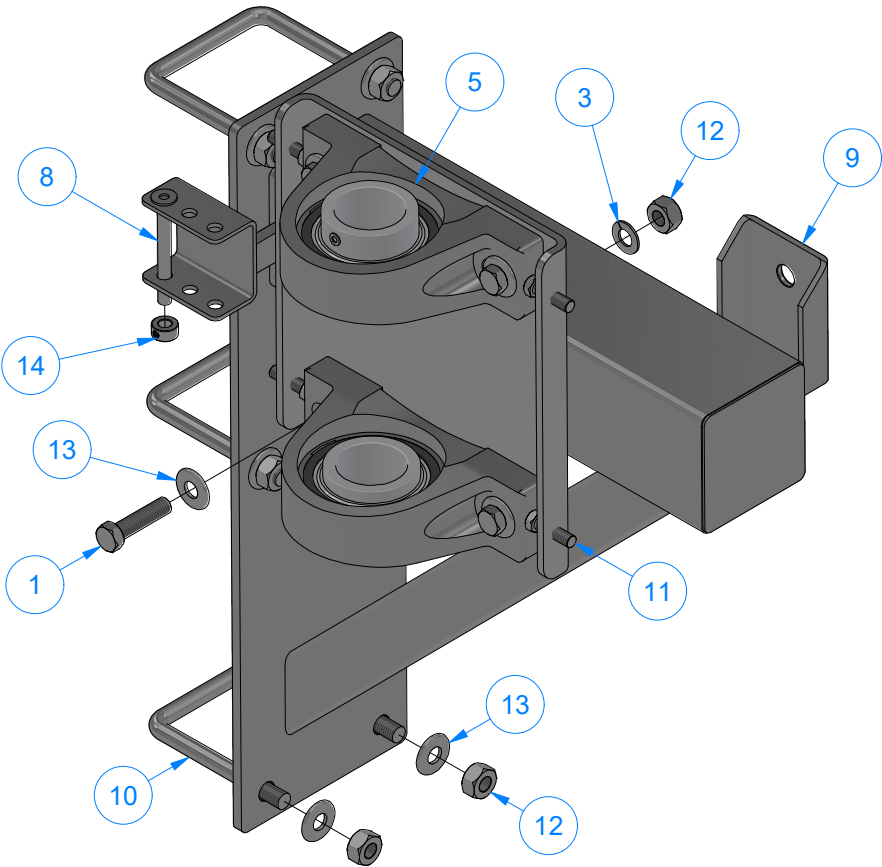
AVW EQUIPMENT CO., INC.  
105 S. 9TH AVENUE  
MAYWOOD, IL 60153  
Tel: 708-343-7738 Fax: 708-343-9065  
WWW.AVWEQUIPMENT.COM

**- COMPANY PROPRIETARY NOTE -**  
THIS DRAWING AND ITS DESIGNS ARE PROPERTY OF AVW EQUIPMENT CO. &  
IT IS NOT TO BE USED OR REPRODUCED WITHOUT THE PERMISSION FROM AVW CO.

DRAWN BY	Ljubomir	CUSTOMER: AVW EQUIPMENT CO.		
CHECKED BY		PROJECT: SW2 - SIDE WASHERS		
QTY		DESCRIPTION: Arm Mount - Driver Side		
RELEASE DATE	11/30/2021	PART NUMBER: SW2DA	REV# 2	
DIMENSION ARE IN INCHES & PROVIDED PRIOR TO SURFACE TREATMENTS, UNLESS NOTED.		SIZE A	EST WEIGHT: 71 lbmass	SHEET 25 of 34

SW2EA - Arm Mount - Passenger Side

Parts List		
ITEM	QTY	DESCRIPTION
1	4	1/2"-13 x 2" L Hex Screw
3	4	1/2" Split Lock Washer
5	2	2" Pillow Block
11	4	3/8" - 16 x 1 1/4" UNC Hex Screw
8	1	Pin 3/8" x 3 1/2" LG
9	1	Side Washer Arm Mount - Weldment [Passenger]
10	3	Square U Bolt D 1/2" x 4" x 5" LG
12	10	1/2-13 Hex Nut
13	10	1/2" Flat Washer
14	1	3/8" Set Screw Collar

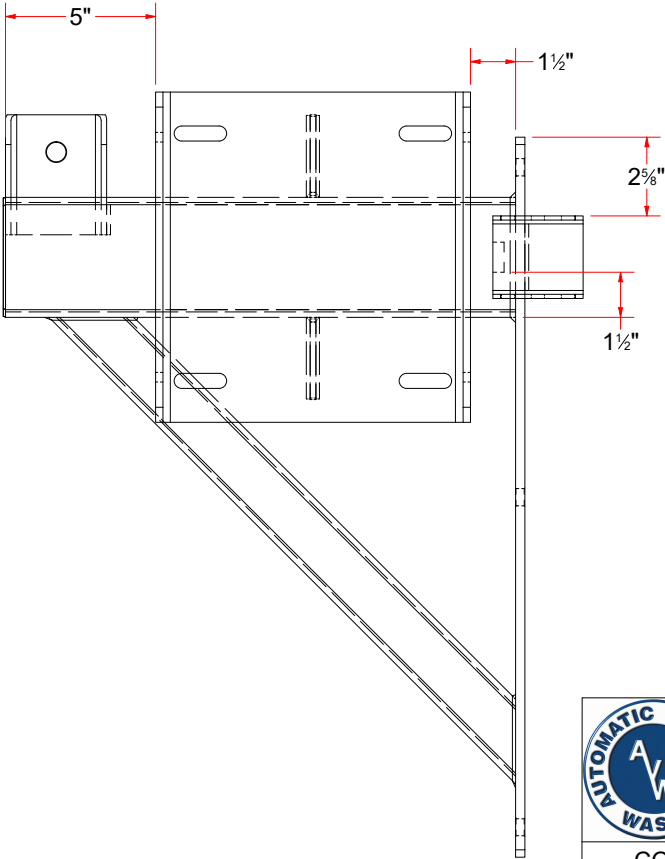
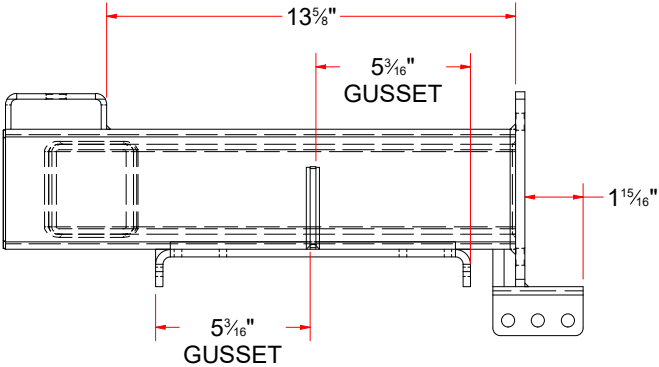


AVW EQUIPMENT CO., INC.  
105 S. 9TH AVENUE  
MAYWOOD, IL 60153  
Tel: 708-343-7738 Fax: 708-343-9065  
WWW.AVWEQUIPMENT.COM

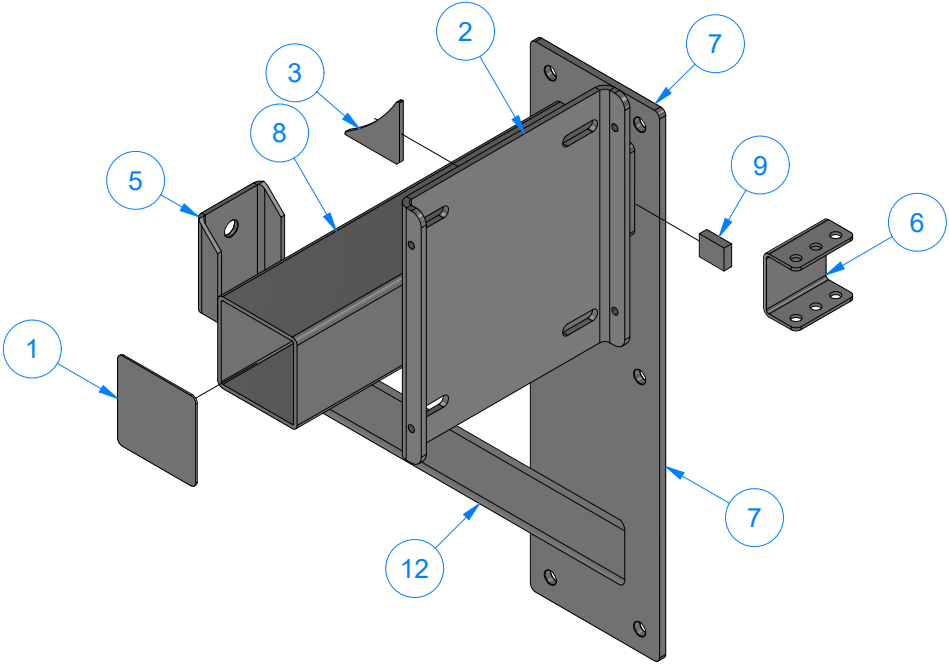
**- COMPANY PROPRIETARY NOTE -**  
THIS DRAWING AND ITS DESIGNS ARE PROPERTY OF AVW EQUIPMENT CO. &  
IT IS NOT TO BE USED OR REPRODUCED WITHOUT THE PERMISSION FROM AVW CO.

DRAWN BY	Ljubomir	CUSTOMER: AVW EQUIPMENT CO.		
CHECKED BY		PROJECT: SW2 - SIDE WASHERS		
QTY		DESCRIPTION: Arm Mount - Passenger Side		
RELEASE DATE	11/30/2021	PART NUMBER: SW2EA		REV# 2
DIMENSION ARE IN INCHES & PROVIDED PRIOR TO SURFACE TREATMENTS, UNLESS NOTED.		SIZE A	EST WEIGHT: 71 lbmass	SHEET 26 of 34

SW2DAA - Side Washer Arm Mount - Weldment [Driver]



Parts List		
ITEM	QTY	DESCRIPTION
1	1	Sq. SS Plate 14Ga x 3 15/16
2	1	Connecting Plate #1/4" x 12" x 11"
3	2	Gusset #3/16" x 2-3_4x2-3_4
5	1	Retract Kit Bracket
6	1	Shock Absorber Bracket
7	1	Side Washer Arm Mount - Plate
8	1	Sq. Tube #7Ga. (0.180 in) x 4" x 17" LG.
9	1	SS Bar Flat #3/8" x 1" x 1 1/4" LG.
12	1	Rect. Tube 2" x 3" x #3/16" Wall x 22" LG.

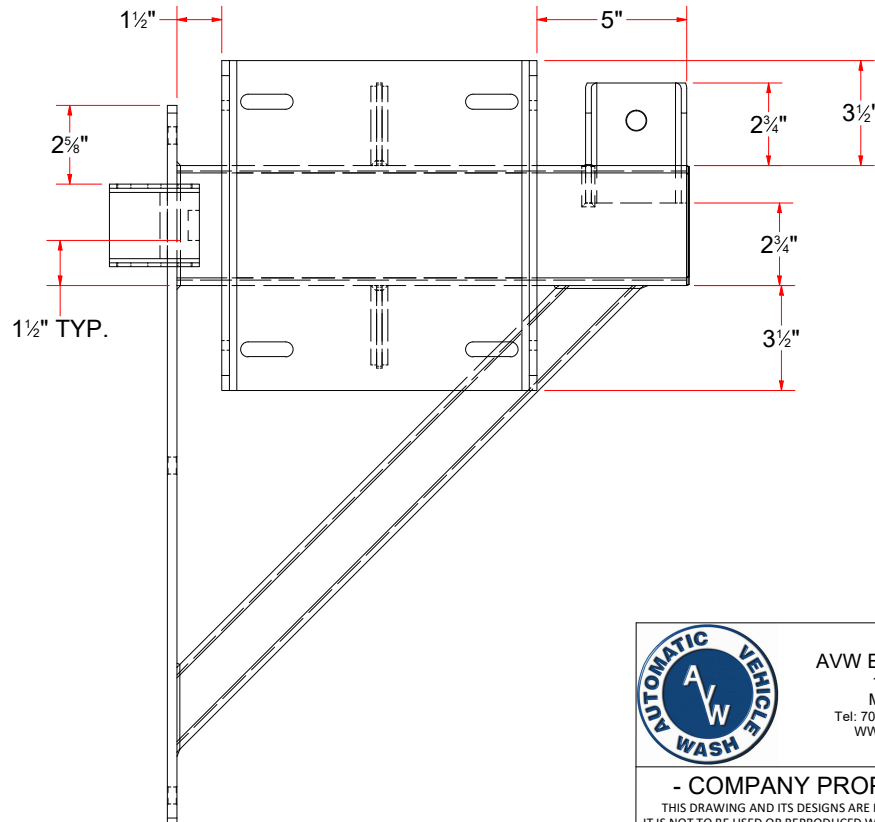
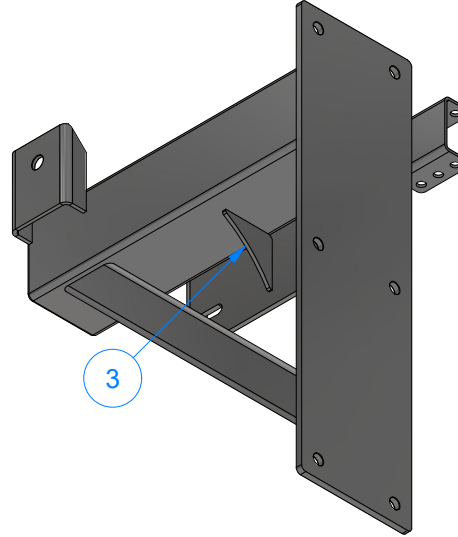
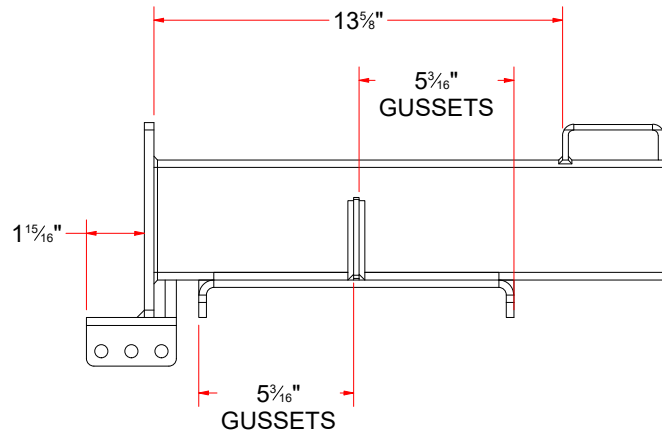


AVW EQUIPMENT CO., INC.  
105 S. 9TH AVENUE  
MAYWOOD, IL 60153  
Tel: 708-343-7738 Fax: 708-343-9065  
WWW.AVWEQUIPMENT.COM

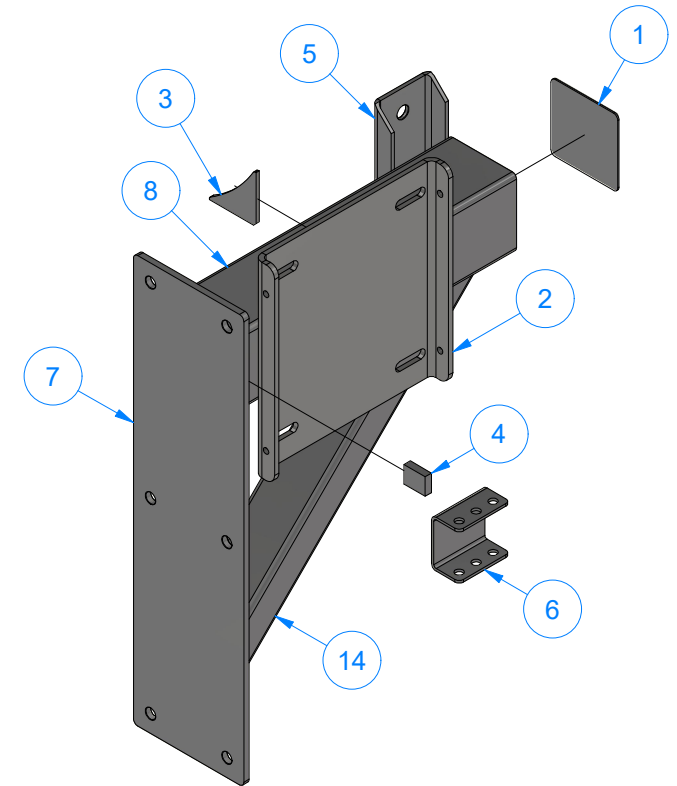
- COMPANY PROPRIETARY NOTE -  
THIS DRAWING AND ITS DESIGNS ARE PROPERTY OF AVW EQUIPMENT CO. &  
IT IS NOT TO BE USED OR REPRODUCED WITHOUT THE PERMISSION FROM AVW CO.

DRAWN BY	Ljubomir	CUSTOMER: AVW EQUIPMENT CO.	
CHECKED BY		PROJECT: SW2 - SIDE WASHERS	
QTY		DESCRIPTION: Side Washer Arm Mount - Weldment [Driver]	
RELEASE DATE	11/30/2021	PART NUMBER: SW2DAA	REV# 2
DIMENSION ARE IN INCHES & PROVIDED PRIOR TO SURFACE TREATMENTS, UNLESS NOTED.		SIZE A	EST WEIGHT: 48.530 lbmass
PATH:L:\Libraries\Productivity\Assembly Arms\Side Washer Arms\SW2 - Side Washer Assemblies\Parts\SW2DA - Arm Mount Assembly [Driver Side]\SW2DAA - Arm Mount Weldment [Driver Side]\SW2DAA.iam		SHEET 27 of 34	

# SW2EAA - Side Washer Arm Mount - Weldment [Passenger]



Parts List		
ITEM	QTY	DESCRIPTION
1	1	Sq. SS Plate 14Ga x 3 15/16
2	1	Connecting Plate #1/4" x 12" x 11"
3	2	Gusset #3/16" x 2-3_4x2-3_4
4	1	SS Bar Flat #3/8" x 1" x 1 1/4" LG.
5	1	Retract Kit Bracket
6	1	Shock Absorber Bracket
7	1	Side Washer Arm Mount - Plate
8	1	Sq. Tube #7Ga. (0.180 in) x 4" x 17" LG.
14	1	Rect. Tube 2" x 3" x #3/16" Wall x 22" LG.



AVW EQUIPMENT CO., INC.  
105 S. 9TH AVENUE  
MAYWOOD, IL 60153  
Tel: 708-343-7738 Fax: 708-343-9065  
WWW.AVWEQUIPMENT.COM

## - COMPANY PROPRIETARY NOTE -

THIS DRAWING AND ITS DESIGNS ARE PROPERTY OF AVW EQUIPMENT CO. & IT IS NOT TO BE USED OR REPRODUCED WITHOUT THE PERMISSION FROM AVW CO.

DRAWN BY

Ljubomir

CUSTOMER: AVW EQUIPMENT CO.

CHECKED BY

PROJECT: SW2 - SIDE WASHERS

QTY

DESCRIPTION: Side Washer Arm Mount - Weldment [Passenger]

RELEASE DATE

11/30/2021

PART NUMBER: SW2EAA

REV# 2

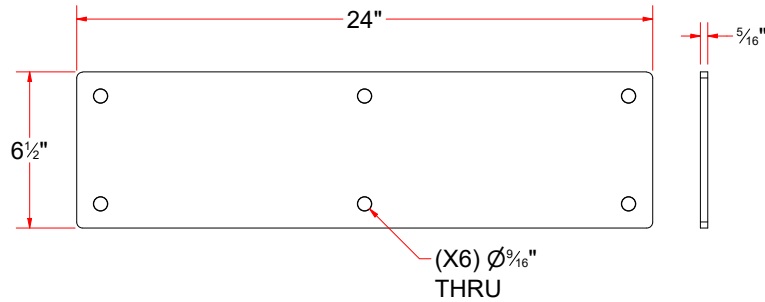
DIMENSION ARE IN INCHES & PROVIDED PRIOR TO SURFACE TREATMENTS, UNLESS NOTED.

SIZE A

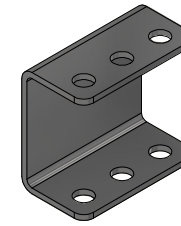
EST WEIGHT: 46 lbmass

SHEET 28 of 34

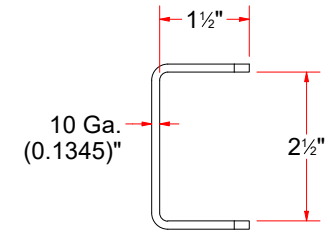
PATH: L:\Libraries\Productivity\Assembly Arms\Side Washer Arms\SW2 - Side Washer Assemblies\Parts\SW2EA - Arm Mount Assembly [Passenger Side]\SW2EAA - Arm Mount Weldment [Passenger Side]\SW2EAA.iam



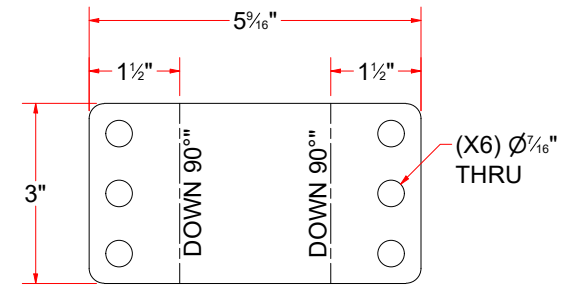
Side Washer Arm Mount - Plate



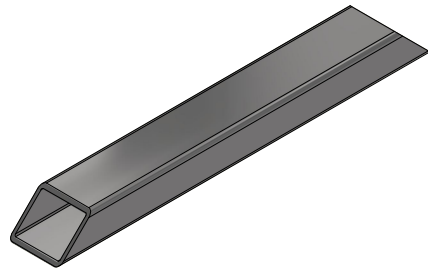
Shock Absorber Bracket



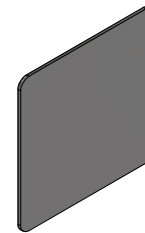
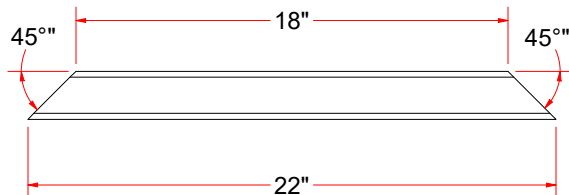
FORMED



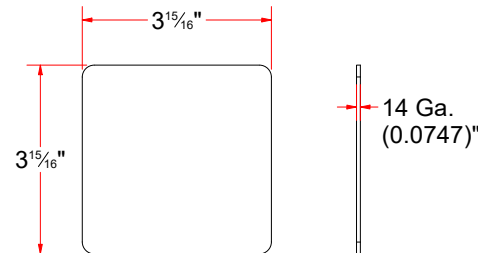
FLAT PATTERN



Rect. Tube 2" x 3" x #3/16" Wall x 22" LG.



Sq. SS Plate 14Ga x 3 15/16



AVW EQUIPMENT CO., INC.  
105 S. 9TH AVENUE  
MAYWOOD, IL 60153  
Tel: 708-343-7738 Fax: 708-343-9065  
WWW.AVWEQUIPMENT.COM

- COMPANY PROPRIETARY NOTE -

THIS DRAWING AND ITS DESIGNS ARE PROPERTY OF AVW EQUIPMENT CO. & IT IS NOT TO BE USED OR REPRODUCED WITHOUT THE PERMISSION FROM AVW CO.

DRAWN BY

Ljubomir

CUSTOMER: AVW EQUIPMENT CO.

CHECKED BY

PROJECT: SW2 - SIDE WASHERS

QTY

DESCRIPTION: Side Washer Arm Mount - Plate

RELEASE DATE

11/30/2021

PART NUMBER: SW2DAAA

REV# 2

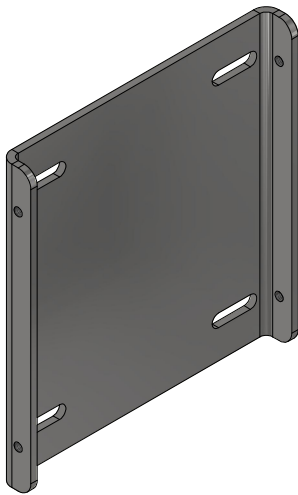
DIMENSION ARE IN INCHES & PROVIDED PRIOR TO SURFACE TREATMENTS, UNLESS NOTED.

SIZE A

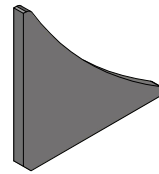
EST WEIGHT:

SHEET 29 of 34

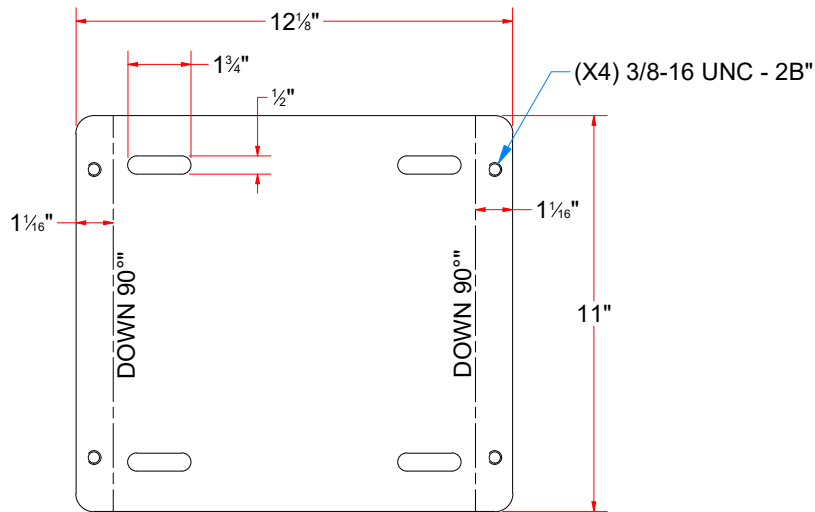
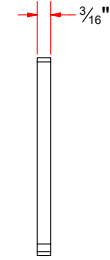
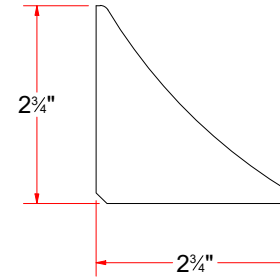
PATH: L:\Libraries\AVW Components\Plates\Side Washer Parts\Side Washer Arm Mounting Plate.ipt



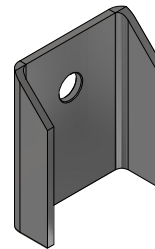
Connecting Plate #1/4" x 12" x 11"



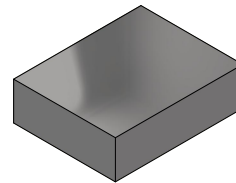
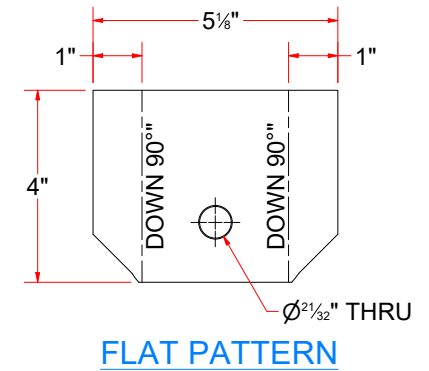
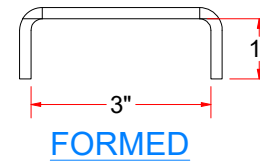
Gusset #3/16" x 2-3\_4x2-3\_4



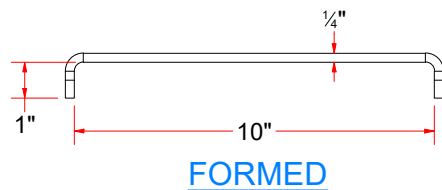
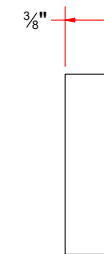
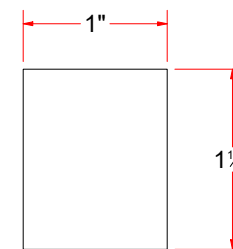
FLAT PATTERN



Retract Kit Bracket



SS Bar Flat #3/8" x 1" x 1 1/4" LG.



AVW EQUIPMENT CO., INC.  
105 S. 9TH AVENUE  
MAYWOOD, IL 60153  
Tel: 708-343-7738 Fax: 708-343-9065  
WWW.AVWEQUIPMENT.COM

- COMPANY PROPRIETARY NOTE -

THIS DRAWING AND ITS DESIGNS ARE PROPERTY OF AVW EQUIPMENT CO. & IT IS NOT TO BE USED OR REPRODUCED WITHOUT THE PERMISSION FROM AVW CO.

DRAWN BY

Ljubomir

CUSTOMER: AVW EQUIPMENT CO.

CHECKED BY

PROJECT: SW2 - SIDE WASHERS

QTY

DESCRIPTION: Connecting Plate #1/4" x 12" x 11"

RELEASE DATE

11/30/2021

PART NUMBER: SW2DAAC

REV# 2

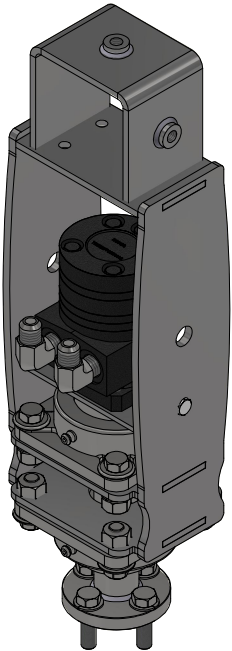
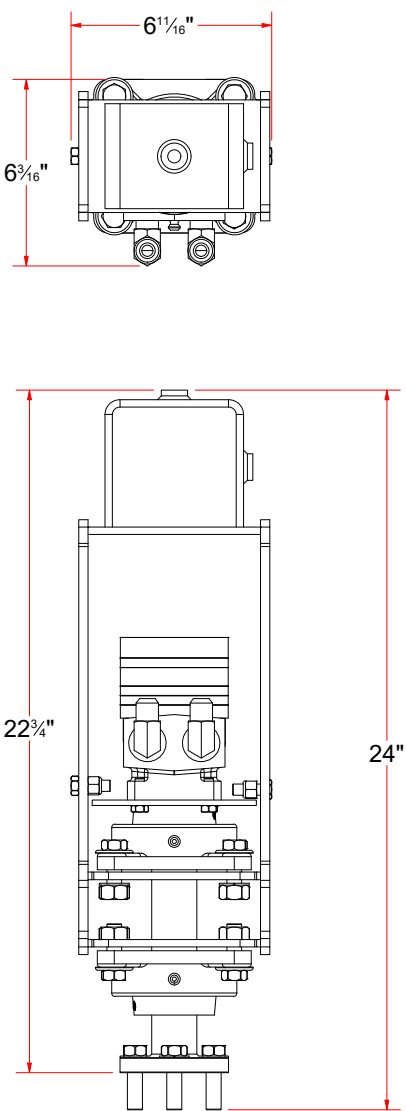
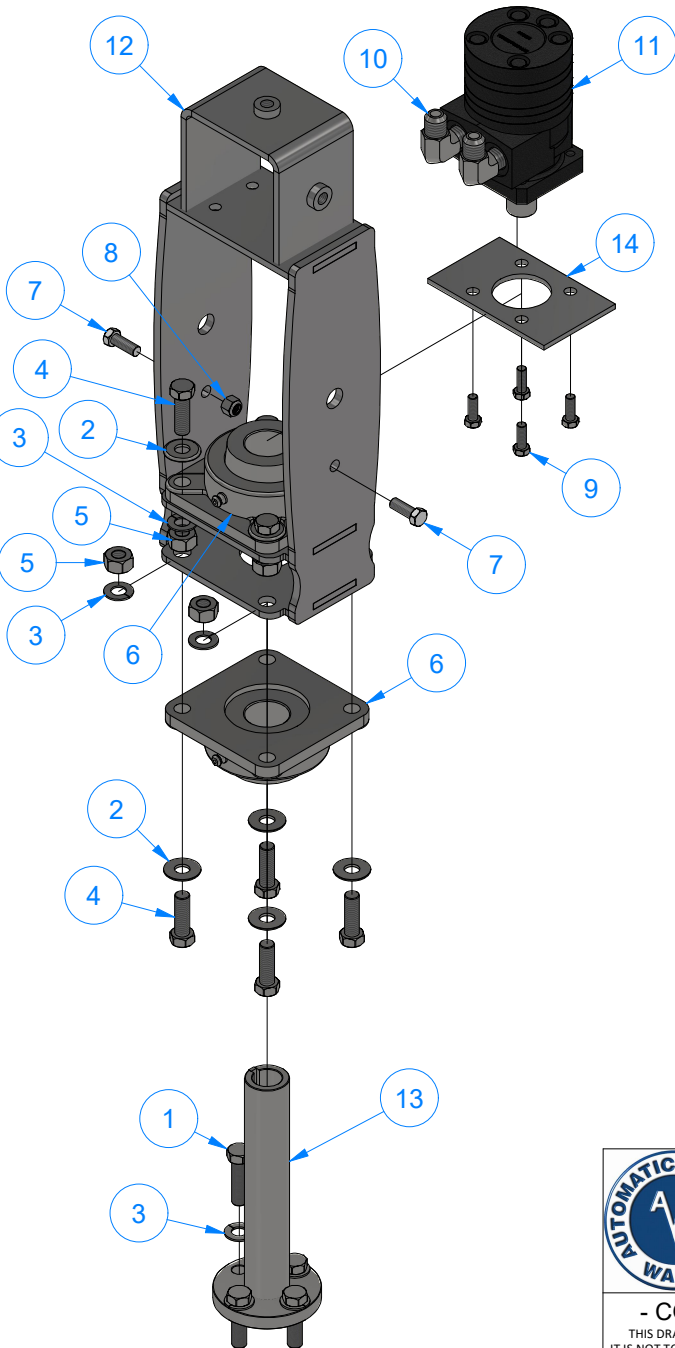
DIMENSION ARE IN INCHES & PROVIDED PRIOR TO SURFACE TREATMENTS, UNLESS NOTED.

SIZE A

EST WEIGHT:

SHEET 30 of 34

SW2K - Brush Drive Assembly - Side Washer



Parts List		
ITEM	QTY	DESCRIPTION
1	4	1/2" - 28 x 1.75" UNC Hex Screw
2	8	1/2" Flat Washer
3	12	1/2" Split Lock Washer
4	8	1/2" - 13 x 1 1/2" UNC Hex Screw
5	8	1/2-13 Hex Nut
6	2	1-1/2" Flange Mount Bearing-Nickel Plated
7	2	3/8" - 16 x 1" UNC Hex Screw
8	2	3/8"-16 Nylon Hex Nut
9	4	5/16"-18 x 1" L Hex Screw
10	2	Elbow (1/2" NPT Male X 1/2" JIC Male)
11	1	Hydraulic Motor
12	1	Hydraulic Motor Mont - Side Washer
13	1	Stub Shaft 1 1/2"D x 9" LG.
14	1	Torque Plate



AVW EQUIPMENT CO., INC.  
105 S. 9TH AVENUE  
MAYWOOD, IL 60153  
Tel: 708-343-7738 Fax: 708-343-9065  
WWW.AVWEQUIPMENT.COM

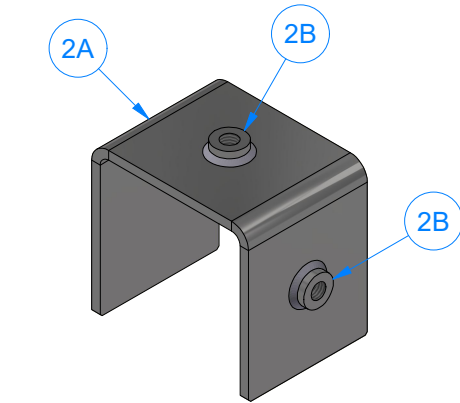
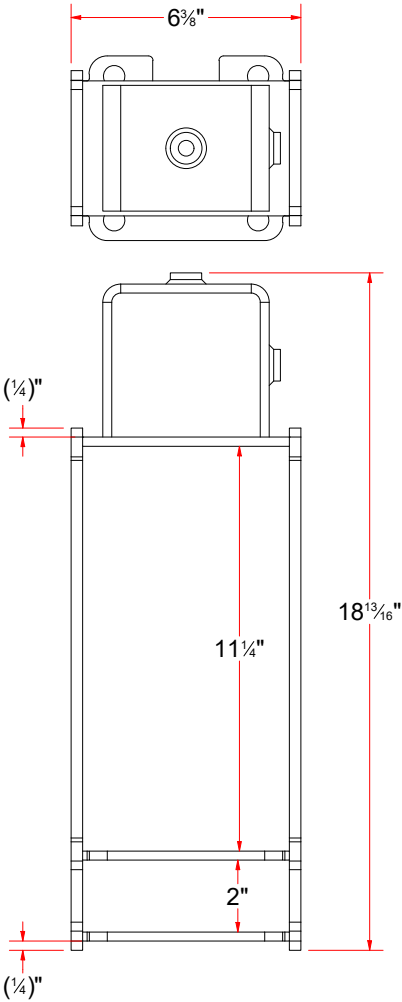
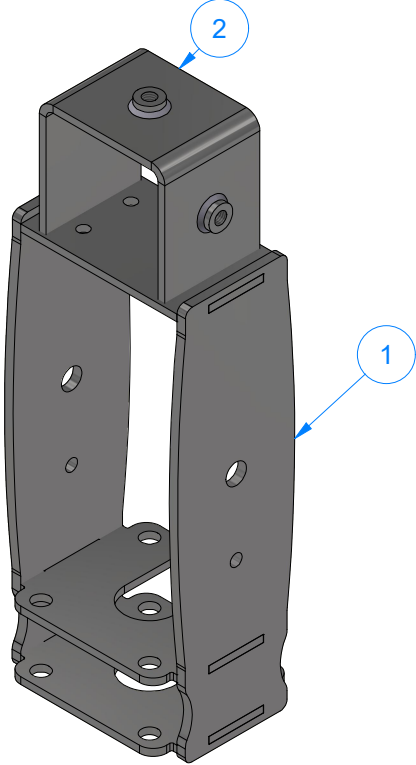
- COMPANY PROPRIETARY NOTE -  
THIS DRAWING AND ITS DESIGNS ARE PROPERTY OF AVW EQUIPMENT CO. &  
IT IS NOT TO BE USED OR REPRODUCED WITHOUT THE PERMISSION FROM AVW CO.

PATH:L:\Libraries\Productivity\Motor Mounts\Hydraulic\Side Washer\SW2K.iam

DRAWN BY	Ljubomir	CUSTOMER: AVW EQUIPMENT CO.	
CHECKED BY		PROJECT: SW2 - SIDE WASHERS	
QTY		DESCRIPTION: Brush Drive Assembly - Side Washer	
RELEASE DATE	11/30/2021	PART NUMBER: SW2K	REV# 2
DIMENSION ARE IN INCHES & PROVIDED PRIOR TO SURFACE TREATMENTS, UNLESS NOTED.		SIZE A	EST WEIGHT: 33 lbmass
			SHEET 31 of 34

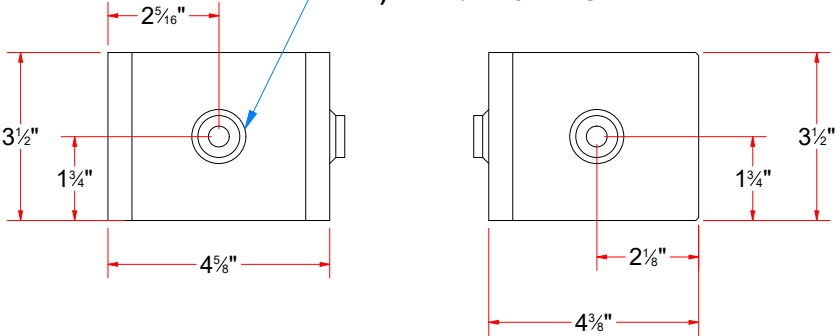
Parts List		
ITEM	QTY	DESCRIPTION
1	1	Hydraulic Wrap Around M. Mount
2	1	Motor Mount Top Bracket - Side Washer

SW5KA - Hydraulic Motor Mont - Side Washer



Motor Mount Top Bracket - Side Washer

- NOTES:**
- 1) WELD NUTS IN PLACE
  - 2) TAP 1/2"-13 THRU



Parts List		
ITEM	QTY	DESCRIPTION
2A	1	Plate #1/4" x 3 1/2" x 12 1/2" LG.
2B	2	Sleeve Nut 1/2"



AVW EQUIPMENT CO., INC.  
 105 S. 9TH AVENUE  
 MAYWOOD, IL 60153  
 Tel: 708-343-7738 Fax: 708-343-9065  
 WWW.AVWEQUIPMENT.COM

**- COMPANY PROPRIETARY NOTE -**  
 THIS DRAWING AND ITS DESIGNS ARE PROPERTY OF AVW EQUIPMENT CO. &  
 IT IS NOT TO BE USED OR REPRODUCED WITHOUT THE PERMISSION FROM AVW CO.

DRAWN BY	Ljubomir	CUSTOMER: AVW EQUIPMENT CO.	
CHECKED BY		PROJECT: SW2 - SIDE WASHERS	
QTY		DESCRIPTION: Hydraulic Motor Mont - Side Washer	
RELEASE DATE	11/30/2021	PART NUMBER: SW5KA	REV# 2
DIMENSION ARE IN INCHES & PROVIDED PRIOR TO SURFACE TREATMENTS, UNLESS NOTED.		SIZE A	EST WEIGHT: 18 lbmass
PATH:L:\Libraries\Productivity\Motor Mounts\Hydraulic\Side Washer\Parts\SW5KA - Side Washer Motor Mount Weldment\SW5KA.iam		SHEET 32 of 34	



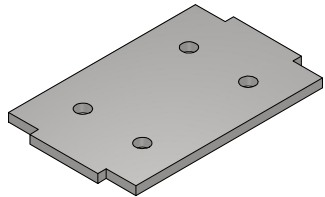


Plate #1/4" x 3 3/4" x 6"

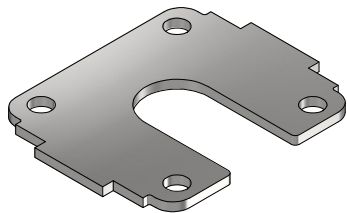
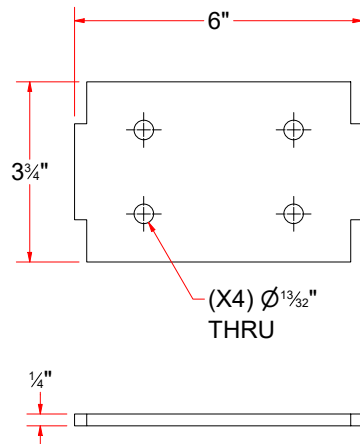


Plate #1/4" x 5 1/8" x 6 3/8" LG.

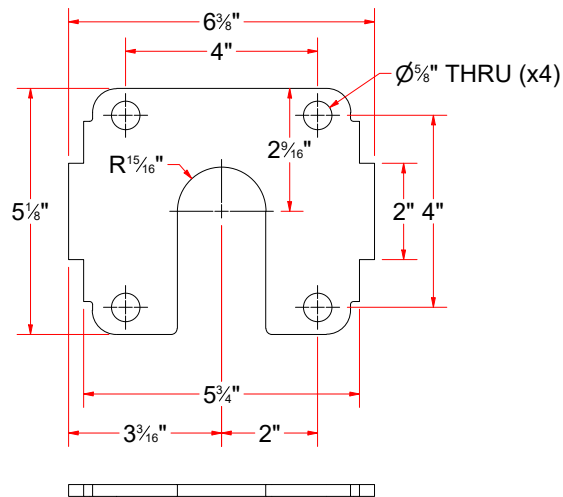
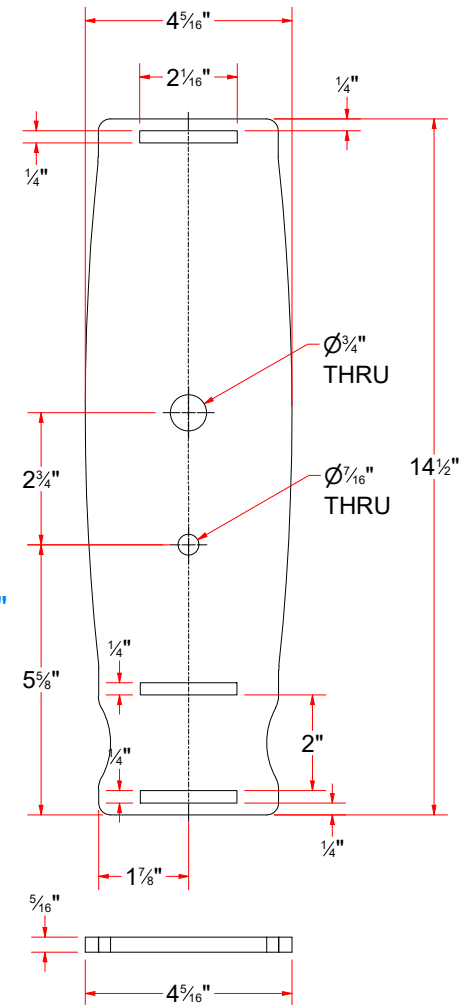
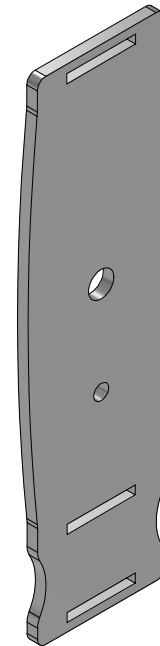


Plate #5/16" x 14-1/2" x 3-3/4"



AVW EQUIPMENT CO., INC.  
105 S. 9TH AVENUE  
MAYWOOD, IL 60153  
Tel: 708-343-7738 Fax: 708-343-9065  
WWW.AVWEQUIPMENT.COM

**- COMPANY PROPRIETARY NOTE -**

THIS DRAWING AND ITS DESIGNS ARE PROPERTY OF AVW EQUIPMENT CO. & IT IS NOT TO BE USED OR REPRODUCED WITHOUT THE PERMISSION FROM AVW CO.

DRAWN BY

Ljubomir

CUSTOMER: AVW EQUIPMENT CO.

CHECKED BY

PROJECT: SW2 - SIDE WASHERS

QTY

DESCRIPTION: Plate #1/4" x 3 3/4" x 6"

RELEASE DATE

11/30/2021

PART NUMBER: WA10KAA

REV# 2

DIMENSION ARE IN INCHES & PROVIDED PRIOR TO SURFACE TREATMENTS, UNLESS NOTED.


SIZE  
**A**

EST WEIGHT:

SHEET 33 of 34

PATH: L:\Libraries\AVW Components\Plates\Motor Mount Plates\Hydraulic Motor Plates\MMP [5.5 in x 3.75 in][Coupler].ipt



 <p><b>AVW EQUIPMENT CO., INC.</b>          105 S. 9TH AVENUE          MAYWOOD, IL 60153          Tel: 708-343-7738 Fax: 708-343-9065          WWW.AVWEQUIPMENT.COM</p>	DRAWN BY	Ljubomir	CUSTOMER: AVW EQUIPMENT CO.		
	CHECKED BY		PROJECT: SW2 - SIDE WASHERS		
	QTY		DESCRIPTION: Plate #1/4" x 3 1/2" x 12 1/2" LG.		
<p><b>- COMPANY PROPRIETARY NOTE -</b>          THIS DRAWING AND ITS DESIGNS ARE PROPERTY OF AVW EQUIPMENT CO. &amp;          IT IS NOT TO BE USED OR REPRODUCED WITHOUT THE PERMISSION FROM AVW CO.</p>	RELEASE DATE	11/30/2021	PART NUMBER: SW5KBA		REV# 2
	DIMENSION ARE IN INCHES & PROVIDED PRIOR TO SURFACE TREATMENTS, UNLESS NOTED.		SIZE <b>A</b>	EST WEIGHT:	SHEET 34 of 34
PATH:L:\Libraries\Productivity\Motor Mounts\Hydraulic\Side Washer\Parts\SW5KB - Side Washer Motor Mount Adjustable Bracket\Parts\SW5KBA.ipt					