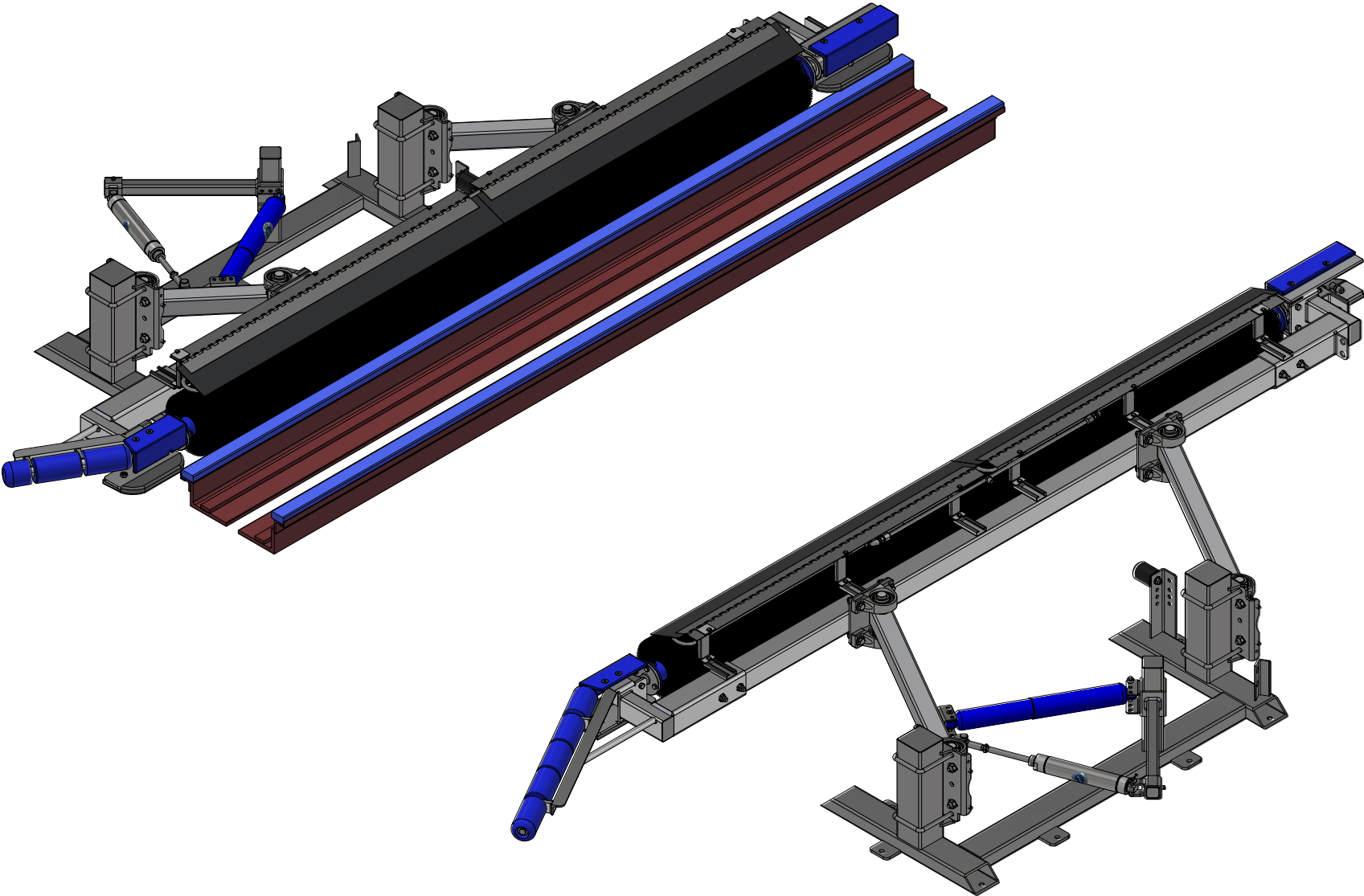


TB2 - Tire Dressing Applicator [Hydraulic] -

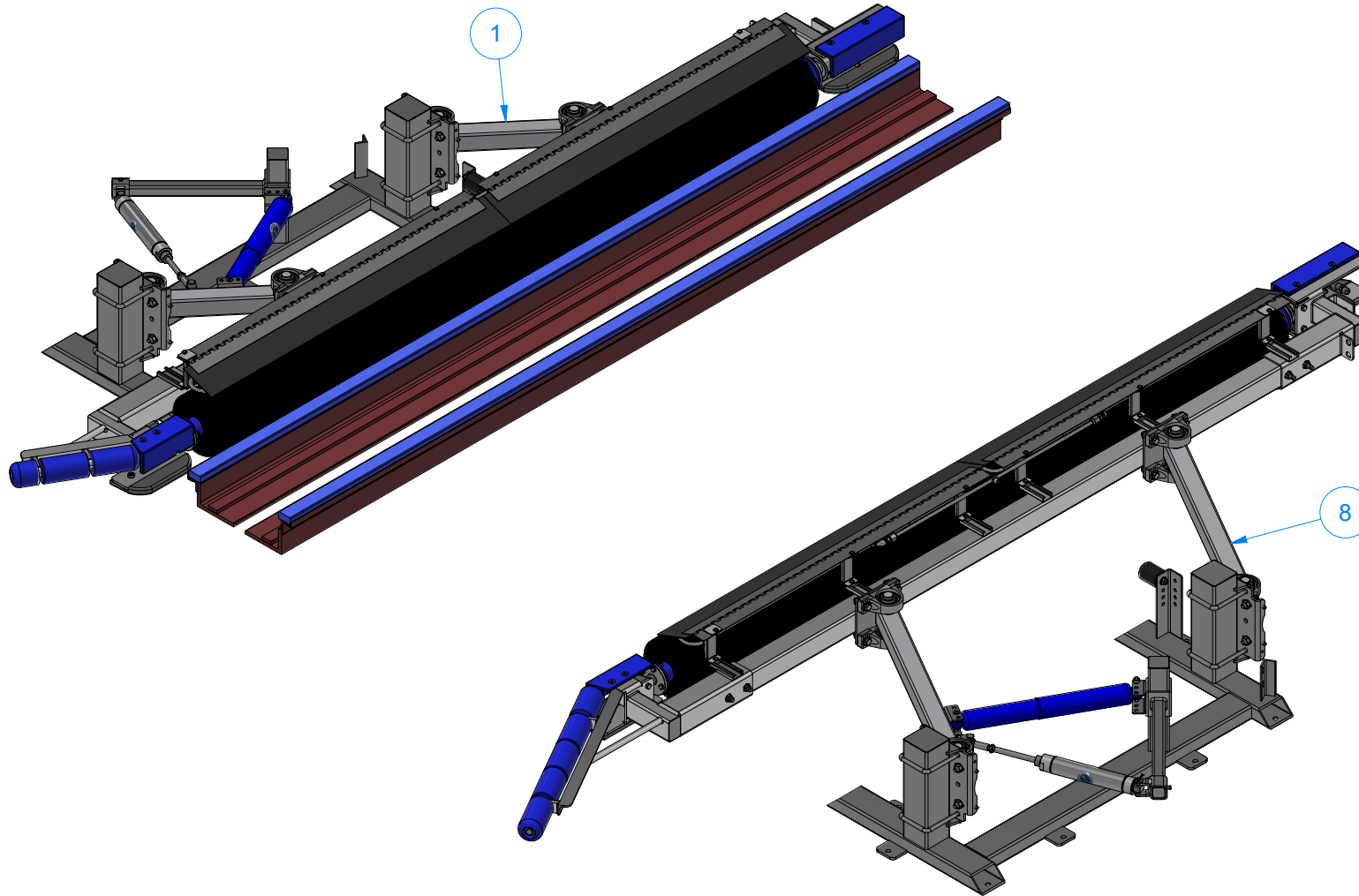


AVW EQUIPMENT CO., INC.  
105 S. 9TH AVENUE  
MAYWOOD, IL 60153  
Tel: 708-343-7738 Fax: 708-343-9065  
WWW.AVWEQUIPMENT.COM

- COMPANY PROPRIETARY NOTE -  
THIS DRAWING AND ITS DESIGNS ARE PROPERTY OF AVW EQUIPMENT CO. &  
IT IS NOT TO BE USED OR REPRODUCED WITHOUT THE PERMISSION FROM AVW CO.

DRAWN BY	Ljubomir	CUSTOMER: AVW Equipment	
CHECKED BY		PROJECT: Tire Shine	
QTY		DESCRIPTION:	
RELEASE DATE	8/7/2021	PART NUMBER: TB2 - Tire Dressing Applicator [Hydraulic]	REV# 1
DIMENSION ARE IN INCHES & PROVIDED PRIOR TO SURFACE TREATMENTS, UNLESS NOTED.		SIZE A	EST WEIGHT:
			SHEET 1 of 40

Parts List		
ITEM	QTY	DESCRIPTION
1	1	Tire Dressing Applicator [Driver][Hydraulic]
8	1	Tire Dressing Applicator [Passenger Side]



AVW EQUIPMENT CO., INC.  
105 S. 9TH AVENUE  
MAYWOOD, IL 60153  
Tel: 708-343-7738 Fax: 708-343-9065  
WWW.AVWEQUIPMENT.COM

**- COMPANY PROPRIETARY NOTE -**

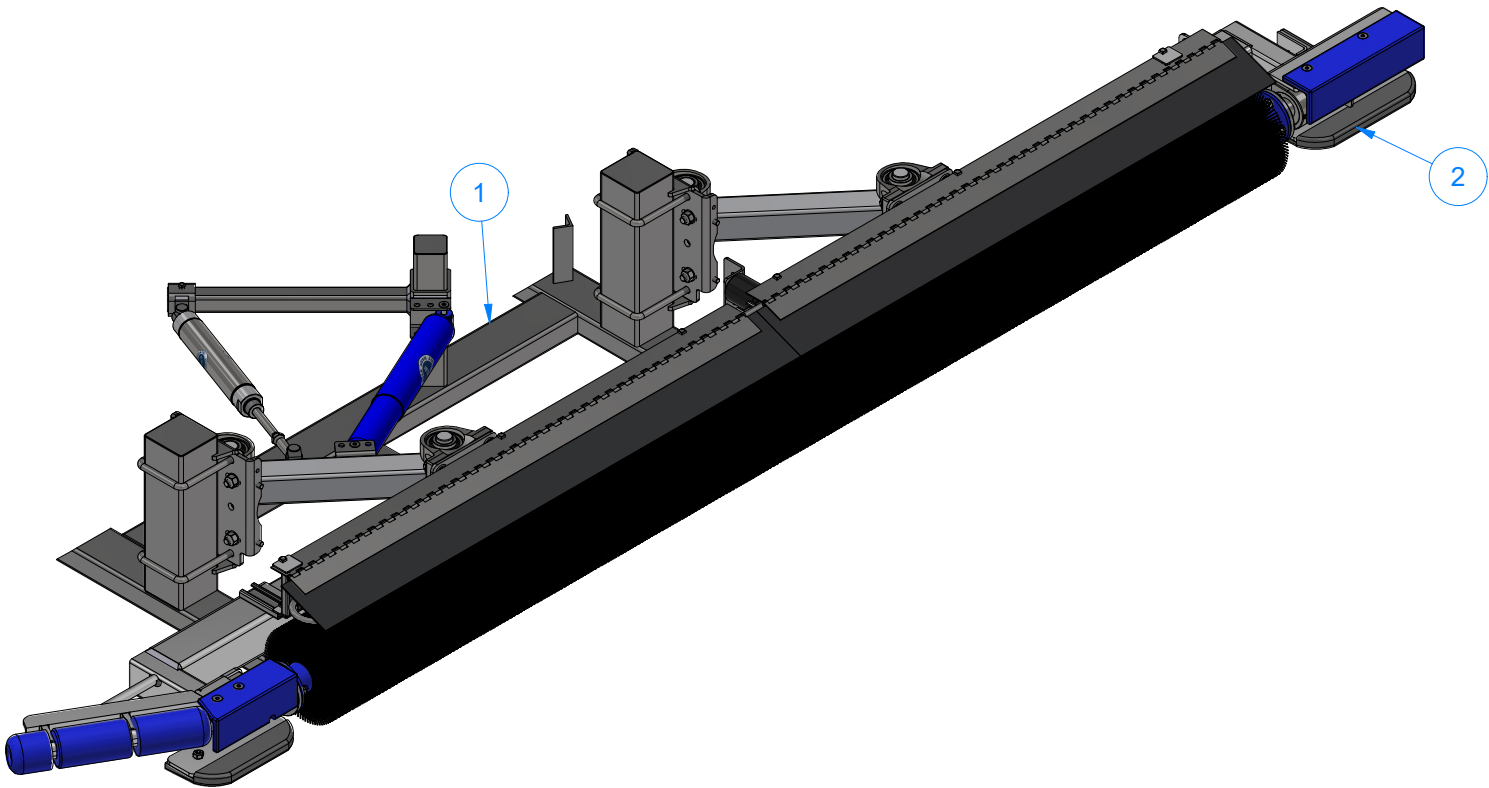
THIS DRAWING AND ITS DESIGNS ARE PROPERTY OF AVW EQUIPMENT CO. & IT IS NOT TO BE USED OR REPRODUCED WITHOUT THE PERMISSION FROM AVW CO.

DRAWN BY	Ljubomir	CUSTOMER: AVW Equipment	
CHECKED BY		PROJECT: Tire Shine	
QTY		DESCRIPTION:	
RELEASE DATE	8/7/2021	PART NUMBER: TB2 - Tire Dressing Applicator [Hydraulic]	REV# 1
DIMENSION ARE IN INCHES & PROVIDED PRIOR TO SURFACE TREATMENTS, UNLESS NOTED.		SIZE A	EST WEIGHT:
			SHEET 2 of 40

PATH:L:\Designs\Product Lines\Tire Washer\Tire Shine\TB2 - Tire Dressing Applicator [Hydraulic]\TB2 - Tire Dressing Applicator [Hydraulic].iam

TB2A - Tire Dressing Applicator [Driver][Hydraulic]

Parts List		
ITEM	QTY	DESCRIPTION
1	1	Tire Shine Frame Assembly [Driver]
2	1	Tire Shine Brush Assembly [Driver][Hydraulic]



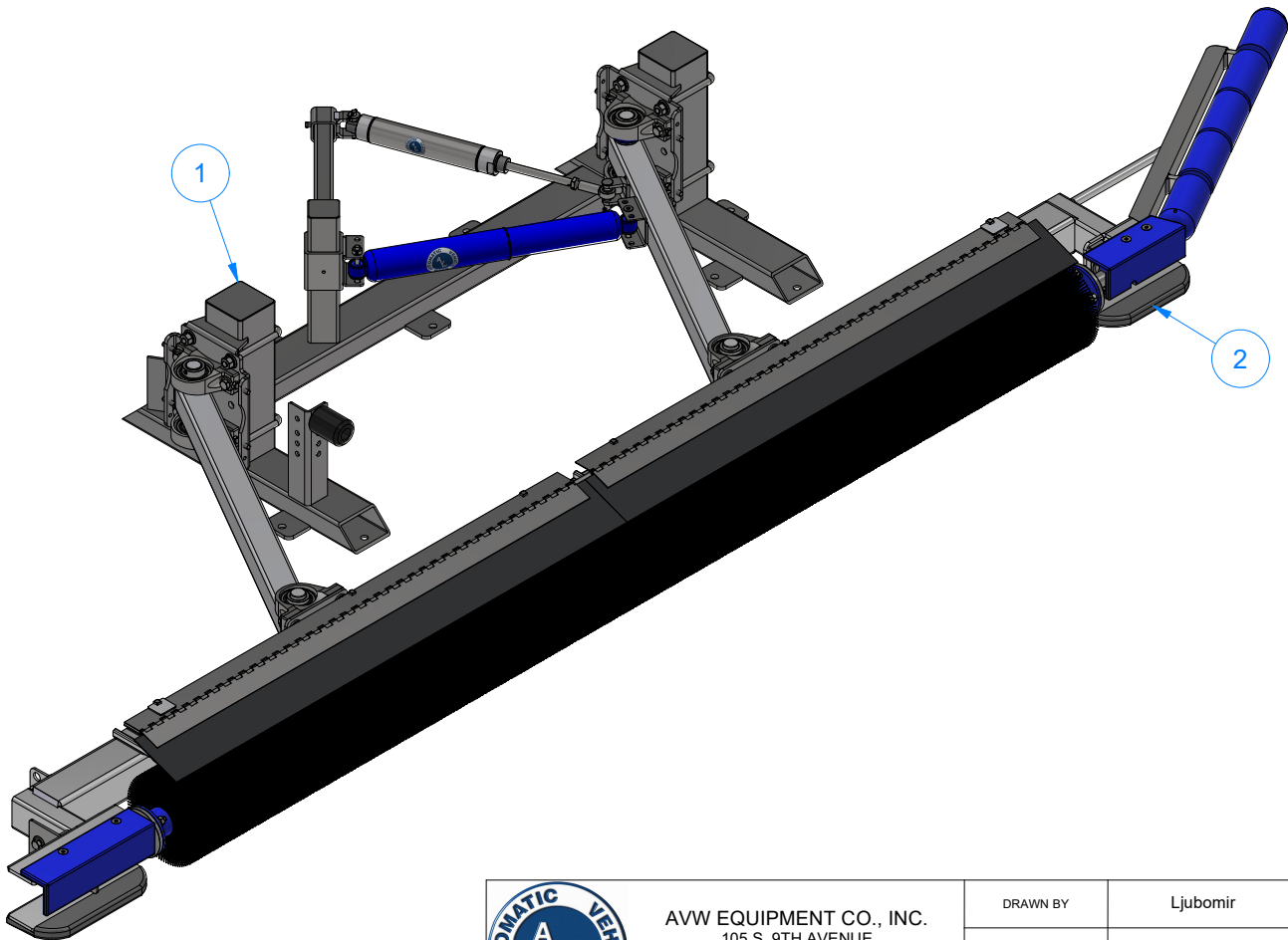
AVW EQUIPMENT CO., INC.  
105 S. 9TH AVENUE  
MAYWOOD, IL 60153  
Tel: 708-343-7738 Fax: 708-343-9065  
WWW.AVWEQUIPMENT.COM

- COMPANY PROPRIETARY NOTE -  
THIS DRAWING AND ITS DESIGNS ARE PROPERTY OF AVW EQUIPMENT CO. &  
IT IS NOT TO BE USED OR REPRODUCED WITHOUT THE PERMISSION FROM AVW CO.

DRAWN BY	Ljubomir	CUSTOMER: AVW Equipment	
CHECKED BY		PROJECT: Tire Shine	
QTY		DESCRIPTION: Tire Dressing Applicator [Driver][Hydraulic]	
RELEASE DATE	8/7/2021	PART NUMBER: TB2A	REV# 1
DIMENSION ARE IN INCHES & PROVIDED PRIOR TO SURFACE TREATMENTS, UNLESS NOTED.		SIZE A	EST WEIGHT:
			SHEET 3 of 40

TB3B - Tire Dressing Applicator [Passenger Side]

Parts List		
ITEM	QTY	DESCRIPTION
1	1	Tire Dressing Frame Assembly [Passenger]
2	1	Tire Dressing Brush Assembly [Passenger][Hydraulic]



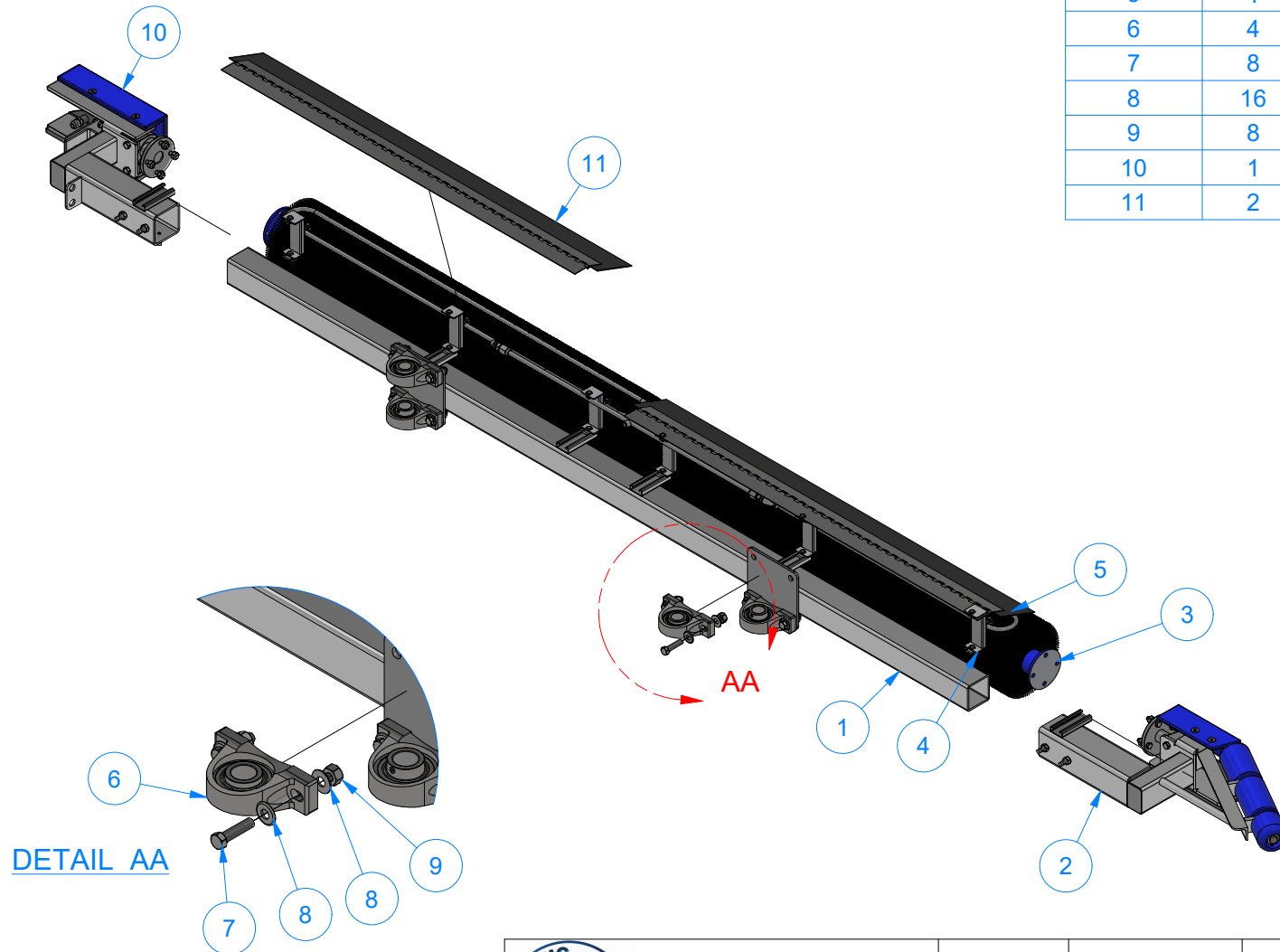
AVW EQUIPMENT CO., INC.  
105 S. 9TH AVENUE  
MAYWOOD, IL 60153  
Tel: 708-343-7738 Fax: 708-343-9065  
WWW.AVWEQUIPMENT.COM

- COMPANY PROPRIETARY NOTE -  
THIS DRAWING AND ITS DESIGNS ARE PROPERTY OF AVW EQUIPMENT CO. &  
IT IS NOT TO BE USED OR REPRODUCED WITHOUT THE PERMISSION FROM AVW CO.

DRAWN BY	Ljubomir	CUSTOMER: AVW Equipment	
CHECKED BY		PROJECT: Tire Shine	
QTY		DESCRIPTION: Tire Dressing Applicator [Passenger Side]	
RELEASE DATE	8/7/2021	PART NUMBER: TB3B	REV# 1
DIMENSION ARE IN INCHES & PROVIDED PRIOR TO SURFACE TREATMENTS, UNLESS NOTED.		SIZE A	EST WEIGHT:
			SHEET 4 of 40



# Tire Shine Brush Assembly [Driver][Hydraulic]



Parts List		
ITEM	QTY	DESCRIPTION
1	1	Brush Support Frame
2	1	Push Bar Assembly [Driver]
3	1	Tire Shine, Brush Set Assembly
4	6	Holder w/ Unistrut and Clamp
5	1	Application Manifold Assembly
6	4	1-1/4" Pillow Block
7	8	1/2"-13 x 2" L Hex Screw
8	16	1/2" Flat Washer
9	8	1/2-13 Hex Nut
10	1	Brush Drive Assembly [Driver - Hyd]
11	2	Tire Shine Manifold Cover Assembly



AVW EQUIPMENT CO., INC.  
105 S. 9TH AVENUE  
MAYWOOD, IL 60153  
Tel: 708-343-7738 Fax: 708-343-9065  
WWW.AVWEQUIPMENT.COM

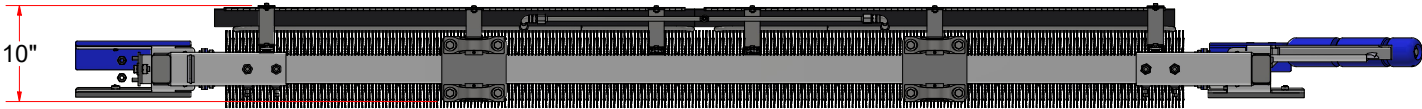
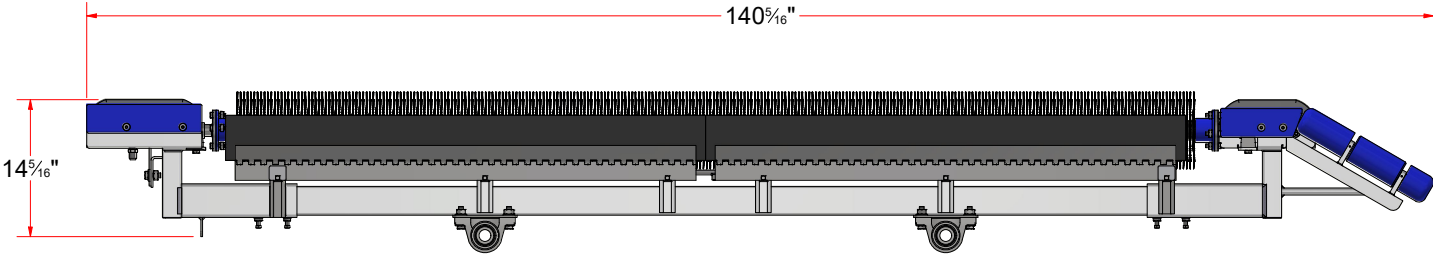
## - COMPANY PROPRIETARY NOTE -

THIS DRAWING AND ITS DESIGNS ARE PROPERTY OF AVW EQUIPMENT CO. & IT IS NOT TO BE USED OR REPRODUCED WITHOUT THE PERMISSION FROM AVW CO.

DRAWN BY	Ljubomir	CUSTOMER: AVW Equipment	
CHECKED BY		PROJECT: Tire Shine	
QTY		DESCRIPTION: Tire Shine Brush Assembly [Driver][Hydraulic]	
RELEASE DATE	8/7/2021	PART NUMBER: TB2AA	REV# 1
DIMENSION ARE IN INCHES & PROVIDED PRIOR TO SURFACE TREATMENTS, UNLESS NOTED.		SIZE A	EST WEIGHT:
			SHEET 5 of 40

PATH:L:\Libraries\Productivity\Tire Washer\Tire Shine Assemblies\TB2AA - Tire Shine Brush Assembly [Driver][Hydraulic].iam

Tire Shine Brush Assembly [Driver][Hydraulic]



AVW EQUIPMENT CO., INC.  
105 S. 9TH AVENUE  
MAYWOOD, IL 60153  
Tel: 708-343-7738 Fax: 708-343-9065  
WWW.AVWEQUIPMENT.COM

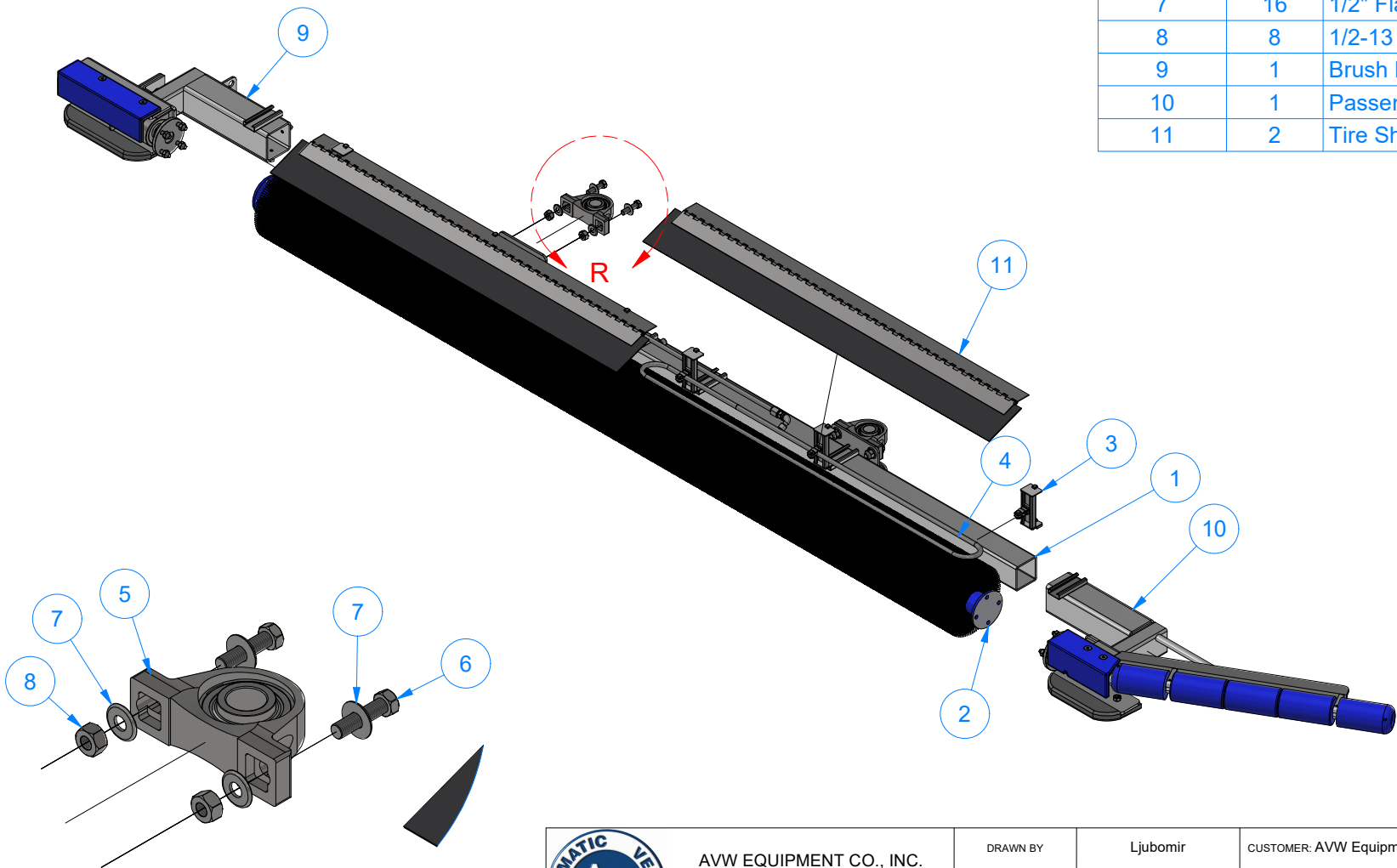
- COMPANY PROPRIETARY NOTE -  
THIS DRAWING AND ITS DESIGNS ARE PROPERTY OF AVW EQUIPMENT CO. &  
IT IS NOT TO BE USED OR REPRODUCED WITHOUT THE PERMISSION FROM AVW CO.

DRAWN BY	Ljubomir	CUSTOMER: AVW Equipment	
CHECKED BY		PROJECT: Tire Shine	
QTY		DESCRIPTION: Tire Shine Brush Assembly [Driver][Hydraulic]	
RELEASE DATE	8/7/2021	PART NUMBER: TB2AA	REV# 1
DIMENSION ARE IN INCHES & PROVIDED PRIOR TO SURFACE TREATMENTS, UNLESS NOTED.		SIZE A	EST WEIGHT:
			SHEET 6 of 40

# TB3BA - Tire Dressing Brush Assembly

[Passenger][Hydraulic]

Parts List		
ITEM	QTY	DESCRIPTION
1	1	Brush Support Frame
2	1	Tire Shine, Brush Set Assembly
3	6	Holder w/ Unistrut and Clamp
4	1	Application Manifold Assembly
5	4	1-1/4" Pillow Block
6	8	1/2"-13 x 2" L Hex Screw
7	16	1/2" Flat Washer
8	8	1/2-13 Hex Nut
9	1	Brush Drive Assembly [Passenger - H]
10	1	Passenger Push Bar Assembly
11	2	Tire Shine Manifold Cover Assembly



DETAIL R

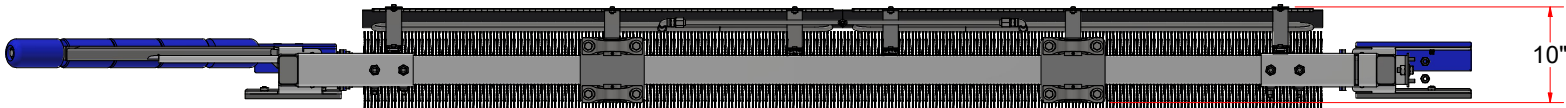
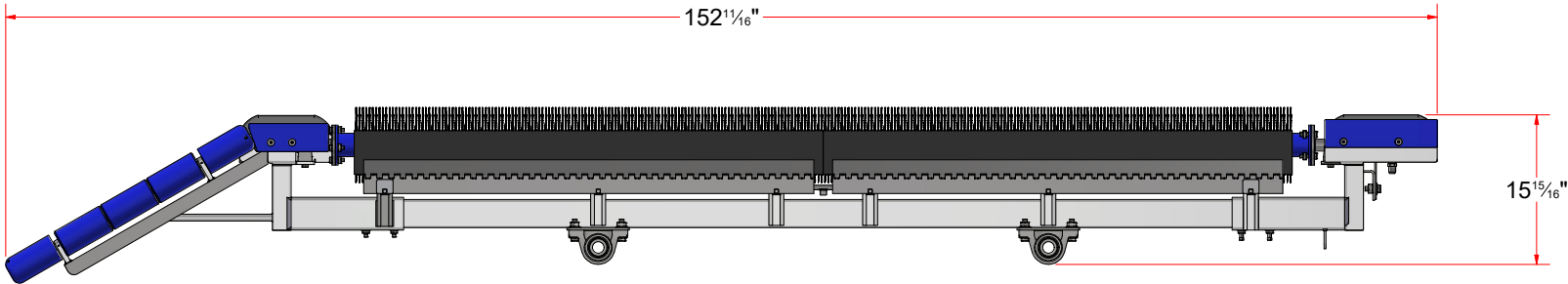
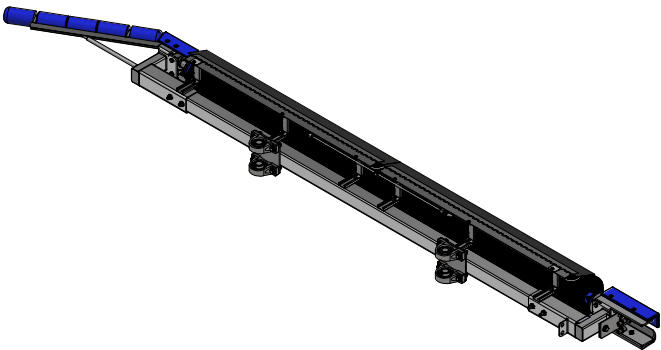


AVW EQUIPMENT CO., INC.  
105 S. 9TH AVENUE  
MAYWOOD, IL 60153  
Tel: 708-343-7738 Fax: 708-343-9065  
WWW.AVWEQUIPMENT.COM

- COMPANY PROPRIETARY NOTE -  
THIS DRAWING AND ITS DESIGNS ARE PROPERTY OF AVW EQUIPMENT CO. &  
IT IS NOT TO BE USED OR REPRODUCED WITHOUT THE PERMISSION FROM AVW CO.

DRAWN BY	Ljubomir	CUSTOMER: AVW Equipment	
CHECKED BY		PROJECT: Tire Shine	
QTY		DESCRIPTION: Tire Dressing Brush Assembly [Passenger][Hydraulic]	
RELEASE DATE	8/7/2021	PART NUMBER: TB3BA	REV# 1
DIMENSION ARE IN INCHES & PROVIDED PRIOR TO SURFACE TREATMENTS, UNLESS NOTED.		SIZE A	EST WEIGHT: SHEET 7 of 40

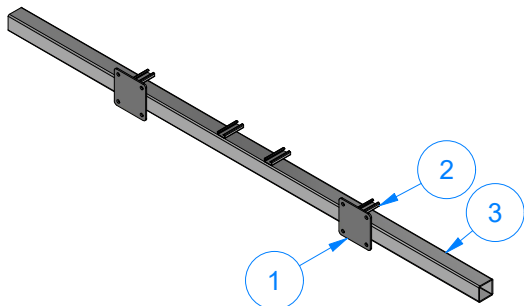
TB3BA - Tire Dressing Brush Assembly  
[Passenger][Hydraulic]



AVW EQUIPMENT CO., INC.  
105 S. 9TH AVENUE  
MAYWOOD, IL 60153  
Tel: 708-343-7738 Fax: 708-343-9065  
WWW.AVWEQUIPMENT.COM

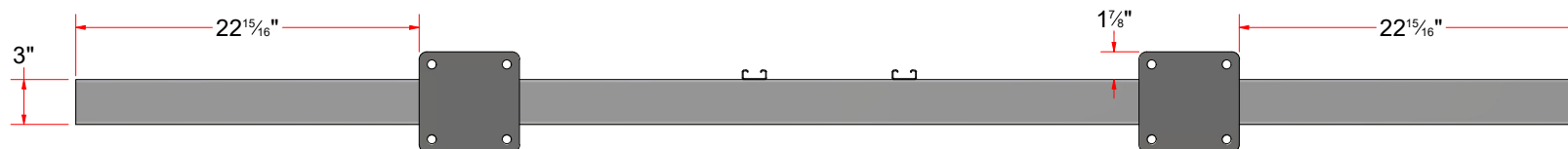
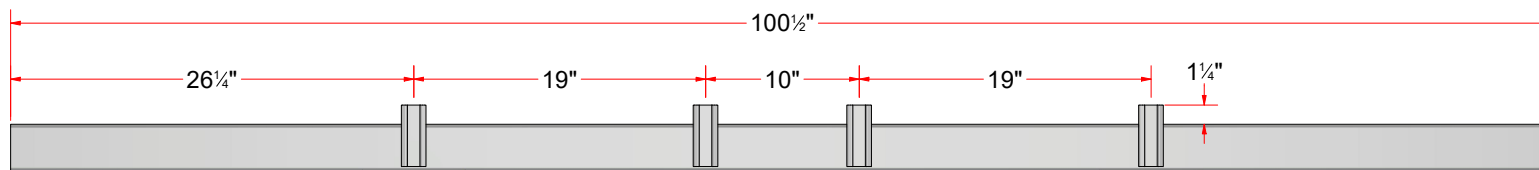
- COMPANY PROPRIETARY NOTE -  
THIS DRAWING AND ITS DESIGNS ARE PROPERTY OF AVW EQUIPMENT CO. &  
IT IS NOT TO BE USED OR REPRODUCED WITHOUT THE PERMISSION FROM AVW CO.

DRAWN BY	Ljubomir	CUSTOMER: AVW Equipment	
CHECKED BY		PROJECT: Tire Shine	
QTY		DESCRIPTION: Tire Dressing Brush Assembly [Passenger][Hydraulic]	
RELEASE DATE	8/7/2021	PART NUMBER: TB3BA	REV# 1
DIMENSION ARE IN INCHES & PROVIDED PRIOR TO SURFACE TREATMENTS, UNLESS NOTED.		SIZE A	EST WEIGHT:
			SHEET 8 of 40



TB3AAC - Brush Support Frame

Parts List		
ITEM	QTY	DESCRIPTION
1	2	Plate #1/4" x 6 11/16" x 6 11/16"
2	4	Unistrut 4" LG
3	1	Sq.Tubing [7 Ga.] 3" x 100 1/2" LG



AVW EQUIPMENT CO., INC.  
105 S. 9TH AVENUE  
MAYWOOD, IL 60153  
Tel: 708-343-7738 Fax: 708-343-9065  
WWW.AVWEQUIPMENT.COM

**- COMPANY PROPRIETARY NOTE -**

THIS DRAWING AND ITS DESIGNS ARE PROPERTY OF AVW EQUIPMENT CO. & IT IS NOT TO BE USED OR REPRODUCED WITHOUT THE PERMISSION FROM AVW CO.

DRAWN BY

Ljubomir

CUSTOMER: AVW Equipment

CHECKED BY

PROJECT: Tire Shine

QTY

DESCRIPTION: Brush Support Frame

RELEASE DATE

8/7/2021

PART NUMBER: TB3AAC

REV# 1

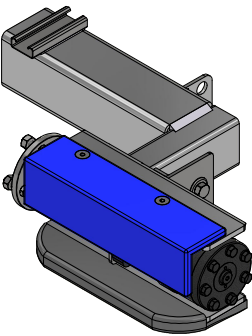
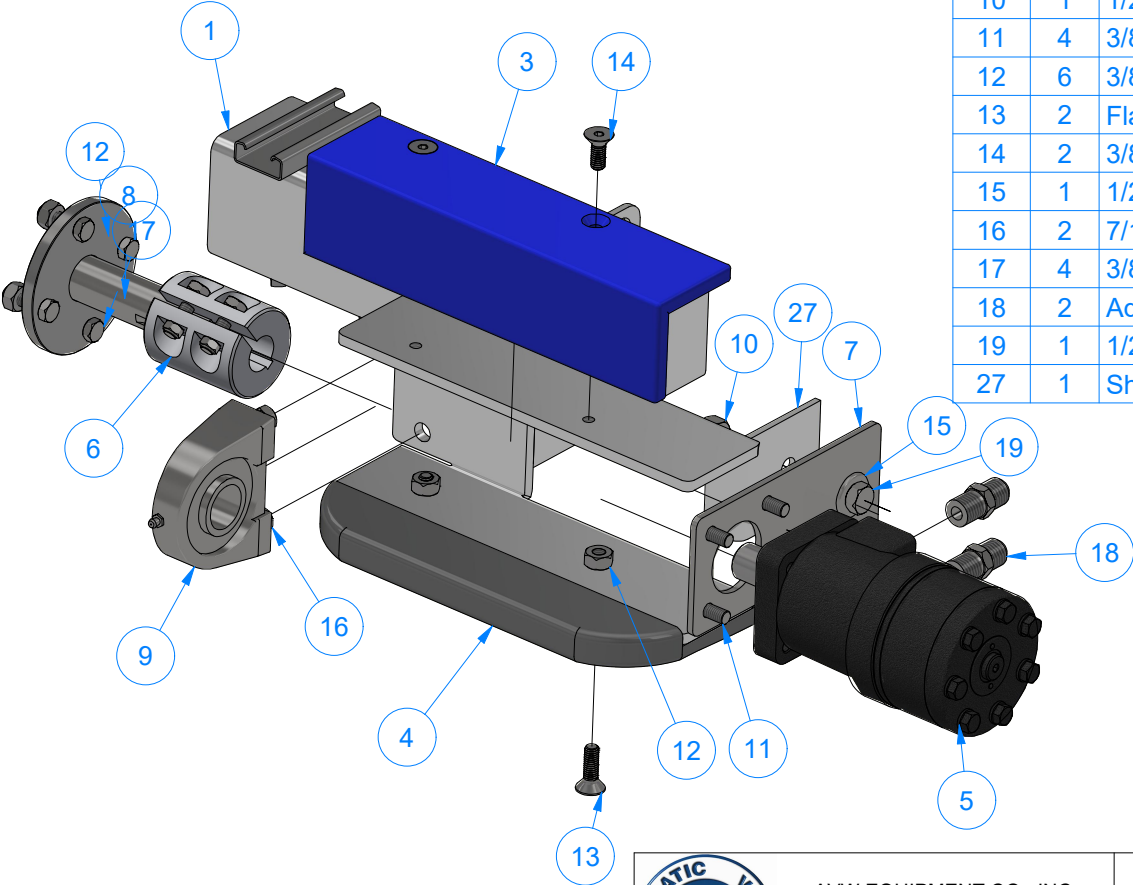
DIMENSION ARE IN INCHES & PROVIDED PRIOR TO SURFACE TREATMENTS, UNLESS NOTED.

SIZE  
**A**

EST WEIGHT:

SHEET 9 of 40

TB3AAB - Brush Drive Assembly [Driver - Hyd]



Parts List			
ITEM	QTY	DESCRIPTION	PART NUMBER
1	1	Base Frame for Brush Drive Assembly [Driver - Hyd.]	TB3AABA
3	1	Rear Exit Cover [Driver]	TB3AABB
4	1	Rear Bumper 12" LG. [Driver]	TB3AABC
5	1	Parker, Hydraulic Motor	WA1KM-BMRS200
6	1	Aluminium Coupling 1 x 1.25 x 3 LG	TB2ADBC
7	1	Torque Plate #3/16" x 3 1/2" x 7 1/2" LG.	TB3AABF
8	1	4-1/2" Stub Shaft	TB2ADBA
9	1	Tapped Base Bearing 1-1/4"	BRG-RB1WB-TB1WC-SS
10	1	1/2-13 Hex Nut	HN1213
11	4	3/8" - 16 x 3/4" Hex Screw	HHCS3816075
12	6	3/8"-16 18-8ss Heavy Hex Nut	HHN3816
13	2	Flat Head Screw 3/8"-16 x 1-1/4"	FHSCS3816125F
14	2	3/8"-16 UNC x 1" LG. Flat Head Cap Screw	FHSCS3816100F
15	1	1/2" Flat Washer	FW12
16	2	7/16" - 14 x 1.13" UNC Hex Screw	HS010
17	4	3/8" - 16 x 1 1/4" UNC Hex Screw	HHCS3816125
18	2	Adapter for 1/2" Tube OD x 1/2" NPT Male Pipe	UNNBLKHDSS050JIC
19	1	1/2" - 13 x 1.25" UNC Hex Screw	HHCS1213125
27	1	Sheet Metal #7 Ga. x 3" x 4" LG.	TB3AABD



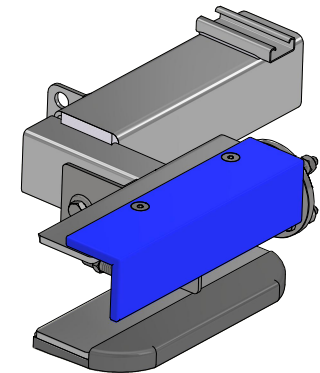
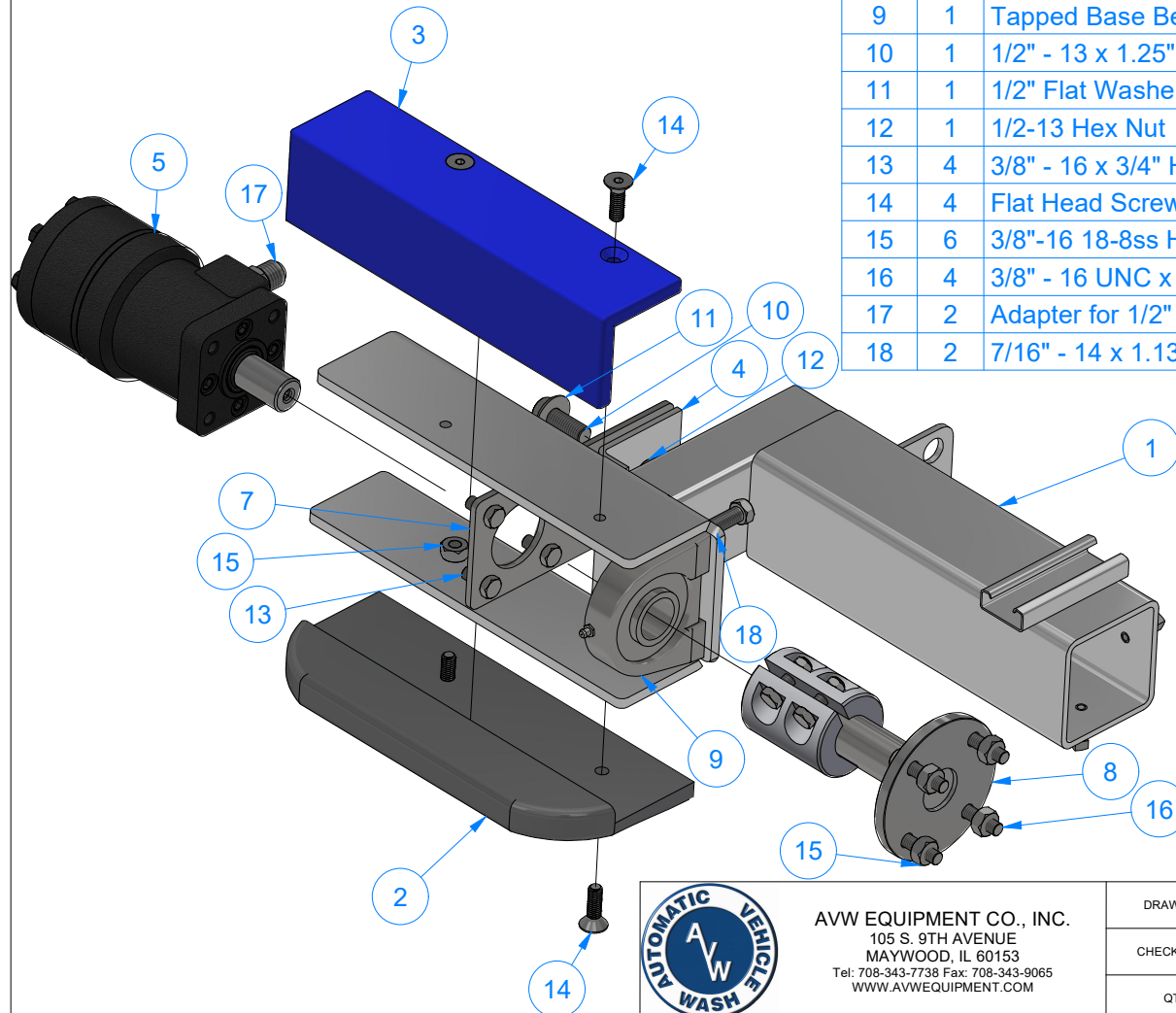
AVW EQUIPMENT CO., INC.  
105 S. 9TH AVENUE  
MAYWOOD, IL 60153  
Tel: 708-343-7738 Fax: 708-343-9065  
WWW.AVWEQUIPMENT.COM

- COMPANY PROPRIETARY NOTE -  
THIS DRAWING AND ITS DESIGNS ARE PROPERTY OF AVW EQUIPMENT CO. &  
IT IS NOT TO BE USED OR REPRODUCED WITHOUT THE PERMISSION FROM AVW CO.

DRAWN BY	Ljubomir	CUSTOMER: AVW Equipment	
CHECKED BY		PROJECT: Tire Shine	
QTY		DESCRIPTION: Brush Drive Assembly [Driver - Hyd]	
RELEASE DATE	8/7/2021	PART NUMBER: TB3AAB	REV# 1
DIMENSION ARE IN INCHES & PROVIDED PRIOR TO SURFACE TREATMENTS, UNLESS NOTED.		SIZE A	EST WEIGHT:
			SHEET 10 of 40



# TB3BAB - Brush Drive Assembly [Passenger - H]



Parts List				
ITEM	QTY	DESCRIPTION	PART NUMBER	
1	1	Base Frame for Brush Drive Assembly [Passenger - Hyd.]	TB3BABA	
2	1	Rear Bumper 12" LG. [Passenger]	TB3BABC	
3	1	Rear Exit Cover [Passenger]	TB3BABB	
4	1	Sheet Metal #7 Ga. x 3" x 4" LG.	TB3AABD	
5	1	Parker, Hydraulic Motor	WA1KM-BMRS200	
6	1	Aluminium Coupling 1 x 1.25 x 3 LG	TB2ADBC	
7	1	Torque Plate #3/16" x 3 1/2" x 7 1/2" LG.	TB3AABF	
8	1	4-1/2" Stub Shaft	TB2ADBA	
9	1	Tapped Base Bearing 1-1/4"	BRG-RB1WB-TB1WC-SS	
10	1	1/2" - 13 x 1.25" UNC Hex Screw	HHCS1213125	
11	1	1/2" Flat Washer	FW12	
12	1	1/2-13 Hex Nut	HN1213	
13	4	3/8" - 16 x 3/4" Hex Screw	HHCS3816075	
14	4	Flat Head Screw 3/8"-16 x 1-1/4"	FHSCS3816125F	
15	6	3/8"-16 18-8ss Heavy Hex Nut	HHN3816	
16	4	3/8" - 16 UNC x 1 1/2" Hex Screw	HHCS3816150	
17	2	Adapter for 1/2" Tube OD x 1/2" NPT Male Pipe	UNNBLKHDSS050JIC	
18	2	7/16" - 14 x 1.13" UNC Hex Screw	HS010	



AVW EQUIPMENT CO., INC.  
105 S. 9TH AVENUE  
MAYWOOD, IL 60153  
Tel: 708-343-7738 Fax: 708-343-9065  
WWW.AVWEQUIPMENT.COM

## - COMPANY PROPRIETARY NOTE -

THIS DRAWING AND ITS DESIGNS ARE PROPERTY OF AVW EQUIPMENT CO. & IT IS NOT TO BE USED OR REPRODUCED WITHOUT THE PERMISSION FROM AVW CO.

DRAWN BY

Ljubomir

CUSTOMER: AVW Equipment

CHECKED BY

PROJECT: Tire Shine

QTY

DESCRIPTION: Brush Drive Assembly [Passenger - H]

RELEASE DATE

8/7/2021

PART NUMBER: TB3BAB

REV# 1

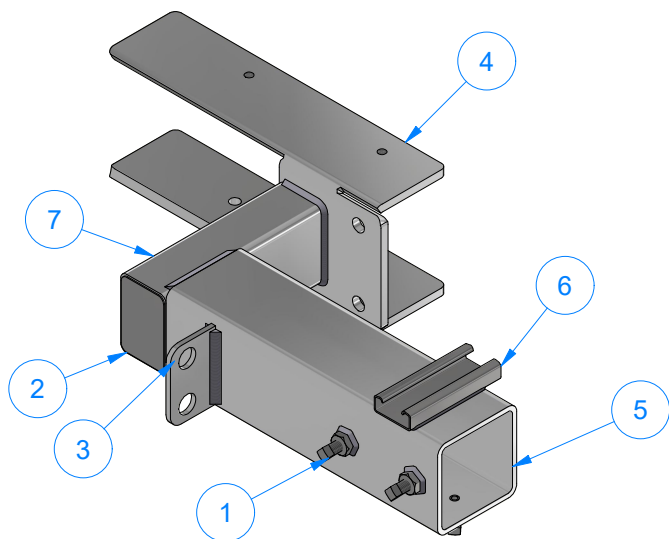
DIMENSION ARE IN INCHES & PROVIDED PRIOR TO SURFACE TREATMENTS, UNLESS NOTED.

SIZE A

EST WEIGHT:

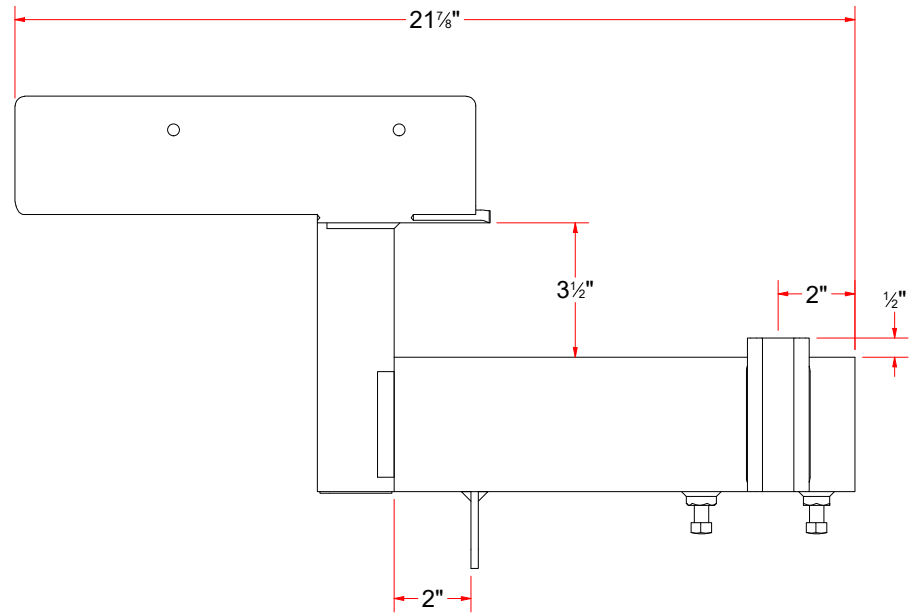
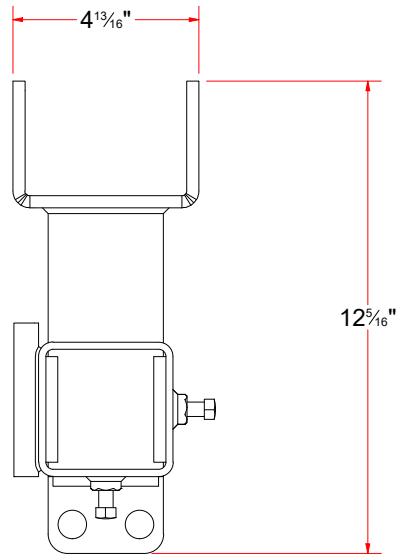
SHEET 11 of 40

PATH:L:\Libraries\Productivity\Tire Washer\Brush Drive Assembly\Hydraulic\TB3BAB - Passenger Side Brush Drive Assembly [Hyd].iam



Parts List			
ITEM	QTY	DESCRIPTION	PART NUMBER
1	4	SQUARE BOLT - 3/8"-16 x 3/4" L	SB3816075
2	1	Sheet Metal [18 Ga.] 1 7/8" x 2 7/8"	PLSS18GX0188X0288X0H
3	1	Plate #3/16" x 2" x 3" LG.	TB3AABAB
4	1	Plate for the Base Frame [Hydraulic][Driver]	TB3AABAA
5	1	Sq. Tub. Assem. 3-1/2" x 12"	TB3AAAAA
6	1	Unistrut 1/2" x 1-1/2" x 4"	UN050150400
7	1	Rct. Tubing [7 Ga.] 2" x 3" x 7" LG.	RCTSS07GX200X300X00700

TB3AABA - Base Frame for Brush Drive Assembly [Driver - Hyd.]



AVW EQUIPMENT CO., INC.  
105 S. 9TH AVENUE  
MAYWOOD, IL 60153  
Tel: 708-343-7738 Fax: 708-343-9065  
WWW.AVWEQUIPMENT.COM

**- COMPANY PROPRIETARY NOTE -**

THIS DRAWING AND ITS DESIGNS ARE PROPERTY OF AVW EQUIPMENT CO. & IT IS NOT TO BE USED OR REPRODUCED WITHOUT THE PERMISSION FROM AVW CO.

DRAWN BY

Ljubomir

CUSTOMER: AVW Equipment

CHECKED BY

PROJECT: Tire Shine

QTY

DESCRIPTION: Base Frame for Brush Drive Assembly [Driver - Hyd.]

RELEASE DATE

8/7/2021

PART NUMBER: TB3AABA

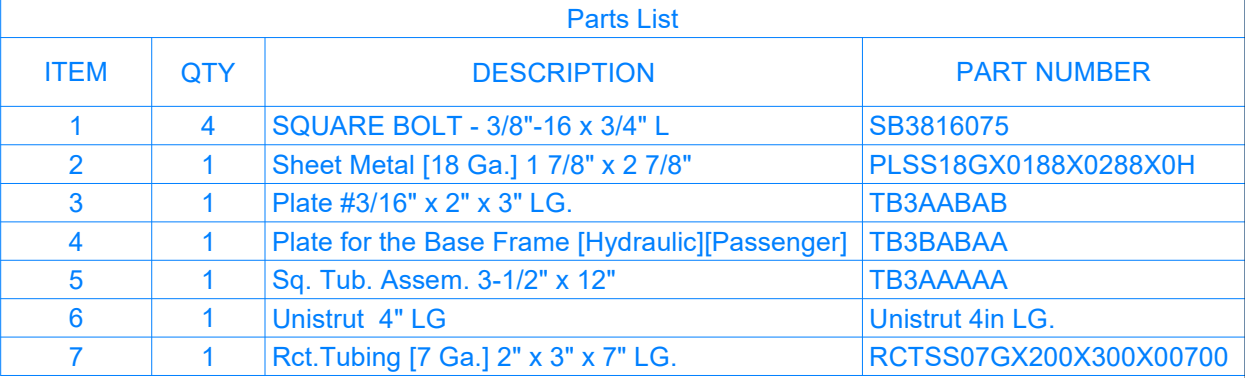
REV# 1

DIMENSION ARE IN INCHES & PROVIDED PRIOR TO SURFACE TREATMENTS, UNLESS NOTED.


SIZE  
**A**

EST WEIGHT:

SHEET 12 of 40

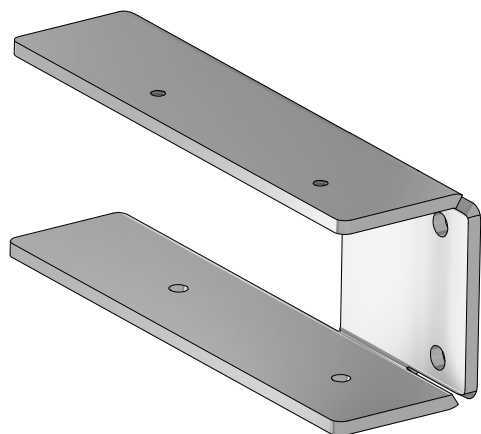


Technical drawings of the 1000 Series Single-Door Lock. The left drawing is a side view showing the lock body and handle assembly. Dimensions include a total width of 21 7/8", a handle offset of 2", a handle height of 3 1/2", and a base width of 2". Callouts 1 and 2 point to the mounting screws and the base plate, respectively. The right drawing is a front view showing the handle and lock body. Dimensions include a handle width of 4 13/16" and a total height of 12 5/16".

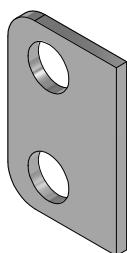
 <p>AVW EQUIPMENT CO., INC. 105 S. 9TH AVENUE MAYWOOD, IL 60153 Tel: 708-343-7738 Fax: 708-343-9065 WWW.AVWEQUIPMENT.COM</p>	DRAWN BY		Ljubomir		CUSTOMER: AVW Equipment		
	CHECKED BY		PROJECT: Tire Shine				
	QTY		DESCRIPTION: Base Frame for Brush Drive Assembly [Passenger - Hyd.]				
<p><b>- COMPANY PROPRIETARY NOTE -</b> THIS DRAWING AND ITS DESIGNS ARE PROPERTY OF AVW EQUIPMENT CO. &amp; IT IS NOT TO BE USED OR REPRODUCED WITHOUT THE PERMISSION FROM AVW CO.</p>	RELEASE DATE		8/7/2021		PART NUMBER: TB3BABA		REV# 1
	DIMENSION ARE IN INCHES & PROVIDED PRIOR TO SURFACE TREATMENTS, UNLESS NOTED.				SIZE <b>A</b>	EST WEIGHT:	SHEET 13 of 40
PATH: L:\Libraries\Productivity\Tire Washer\Brush Drive Assembly\Hydraulic\Parts\TB3BABA - Base Frame for Brush Drive Assembly [Passenger - Hyd.].iam							



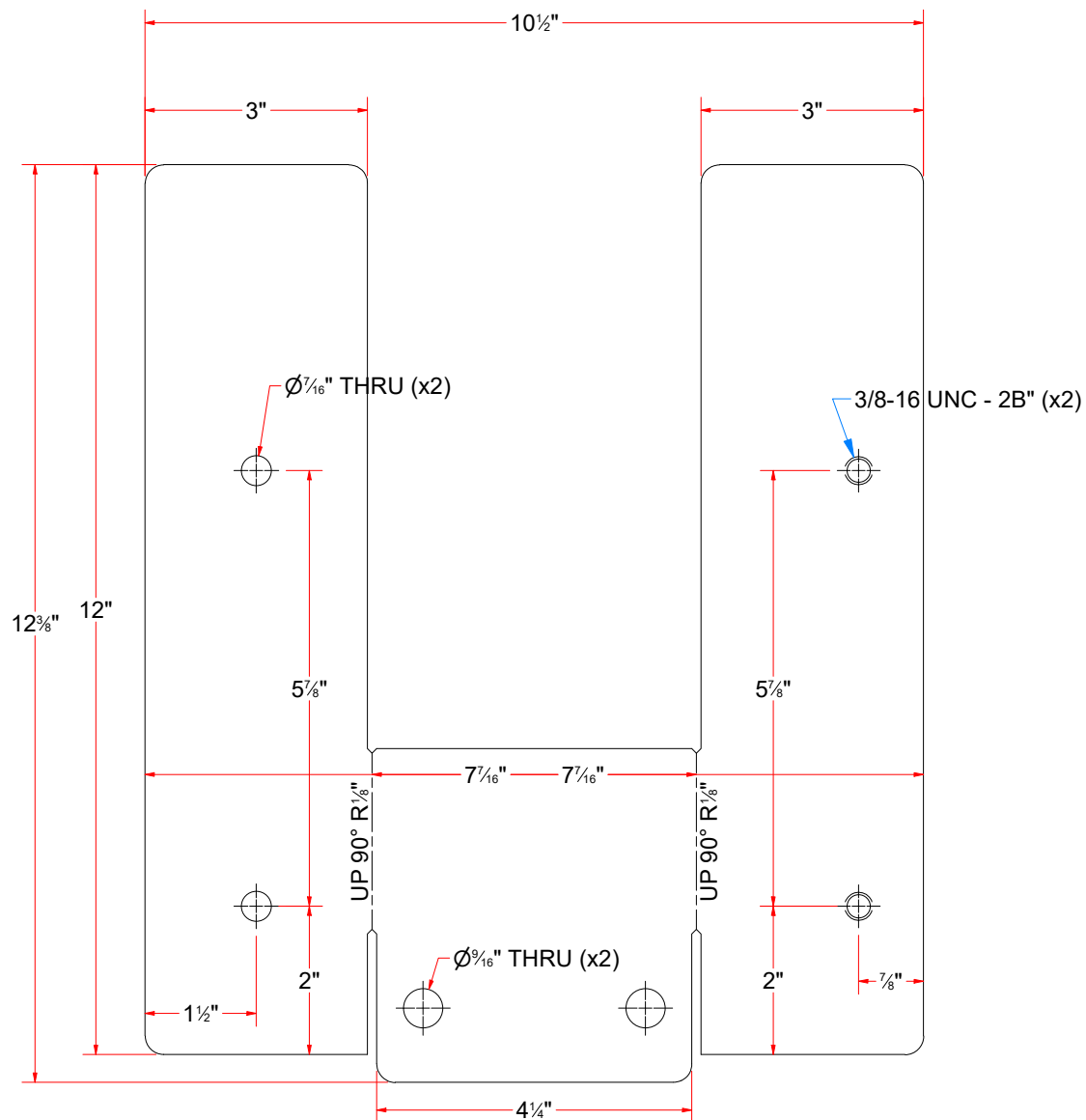
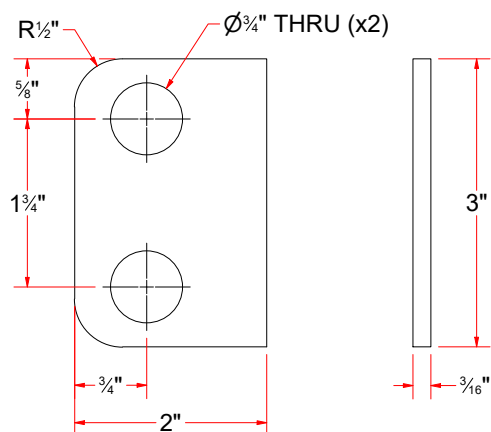
PATH:L:\Libraries\Productivity\Tire Washer\Brush Drive Assembly\Hydraulic\Parts\TB3AABAA - Plate for the Base Frame (Hydraulic).ipt



**TB3BABAA**  
Plate for the Base Frame [Hydraulic][Passenger]



**TB3AABAB - Plate #3/16" x 2" x 3" LG.**



AVW EQUIPMENT CO., INC.  
105 S. 9TH AVENUE  
MAYWOOD, IL 60153  
Tel: 708-343-7738 Fax: 708-343-9065  
WWW.AVWEQUIPMENT.COM

**- COMPANY PROPRIETARY NOTE -**

THIS DRAWING AND ITS DESIGNS ARE PROPERTY OF AVW EQUIPMENT CO. &  
IT IS NOT TO BE USED OR REPRODUCED WITHOUT THE PERMISSION FROM AVW CO.

DRAWN BY

Ljubomir

CUSTOMER: AVW Equipment

CHECKED BY

PROJECT: Tire Shine

QTY

DESCRIPTION: Plate for the Base Frame [Hydraulic][Passenger]

RELEASE  
DATE

8/7/2021

PART NUMBER: TB3BABAA

REV# 1

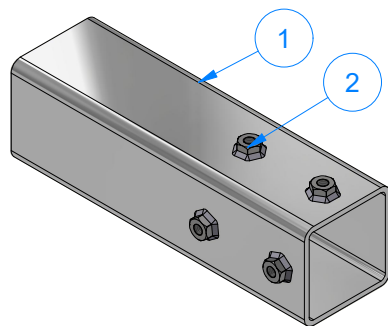
DIMENSION ARE IN INCHES & PROVIDED PRIOR  
TO SURFACE TREATMENTS, UNLESS NOTED.

SIZE  
**A**

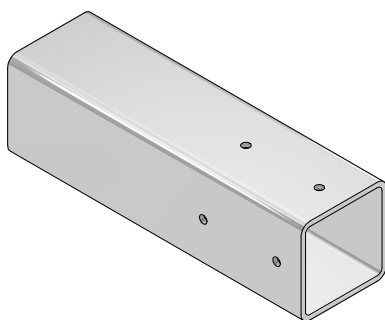
EST WEIGHT:

SHEET 15 of 40

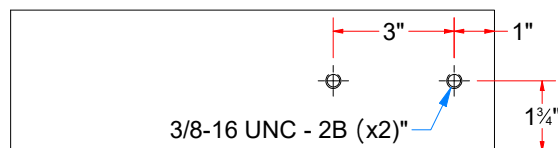
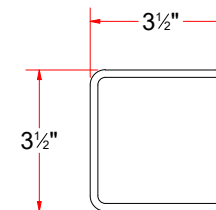
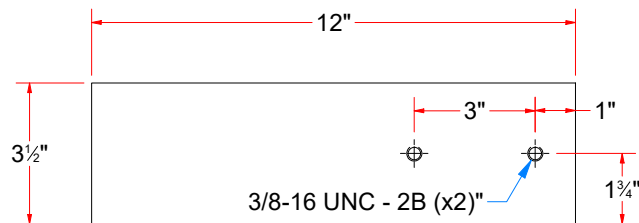
PATH: L:\Libraries\Productivity\Tire Washer\Brush Drive Assembly\Hydraulic\Parts\TB3BABAA - Plate for the Base Frame [Hydraulic].ipt



TB3AAAAA - Sq. Tub. Assem. 3-1/2" x 12"



TB3AAAAAA - Sq. Tubing 3 1/2" x 3/16" x 12" LG.



Parts List			
ITEM	QTY	DESCRIPTION	PART NUMBER
1	1	Sq. Tubing 3 1/2" x 3/16" x 12" LG.	TB3AAAAAA
2	4	3/8"-16 18-8ss Heavy Hex Nut	HHN3816



AVW EQUIPMENT CO., INC.  
105 S. 9TH AVENUE  
MAYWOOD, IL 60153  
Tel: 708-343-7738 Fax: 708-343-9065  
WWW.AVWEQUIPMENT.COM

**- COMPANY PROPRIETARY NOTE -**

THIS DRAWING AND ITS DESIGNS ARE PROPERTY OF AVW EQUIPMENT CO. & IT IS NOT TO BE USED OR REPRODUCED WITHOUT THE PERMISSION FROM AVW CO.

DRAWN BY

Ljubomir

CUSTOMER: AVW Equipment

CHECKED BY

PROJECT: Tire Shine

QTY

DESCRIPTION: Sq. Tub. Assem. 3-1/2" x 12"

RELEASE DATE

8/7/2021

PART NUMBER: TB3AAAAA

REV# 1

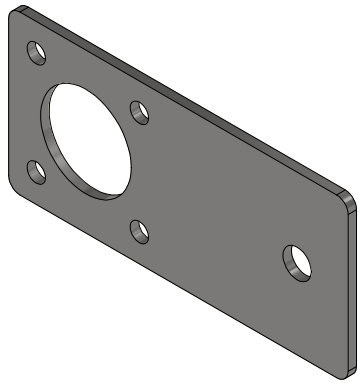
DIMENSION ARE IN INCHES & PROVIDED PRIOR TO SURFACE TREATMENTS, UNLESS NOTED.

SIZE  
**A**

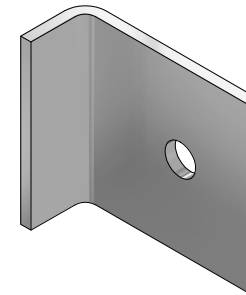
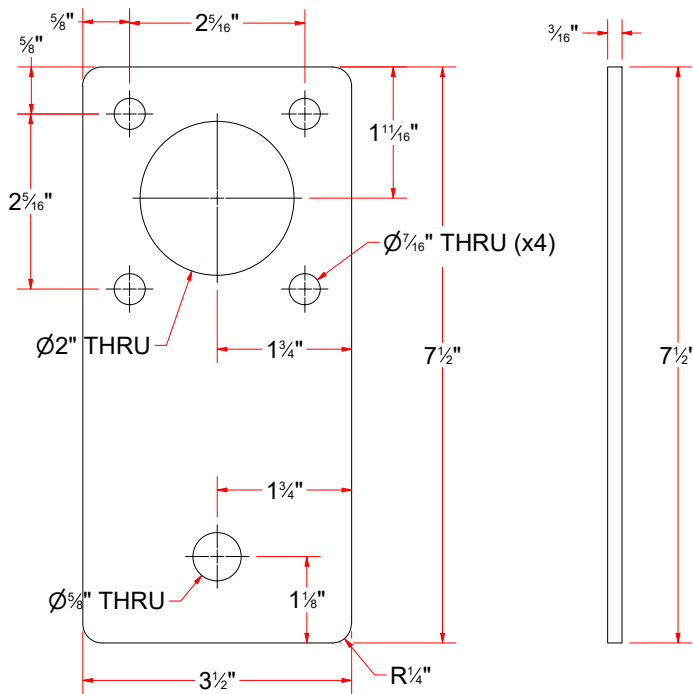
EST WEIGHT:

SHEET 16 of 40

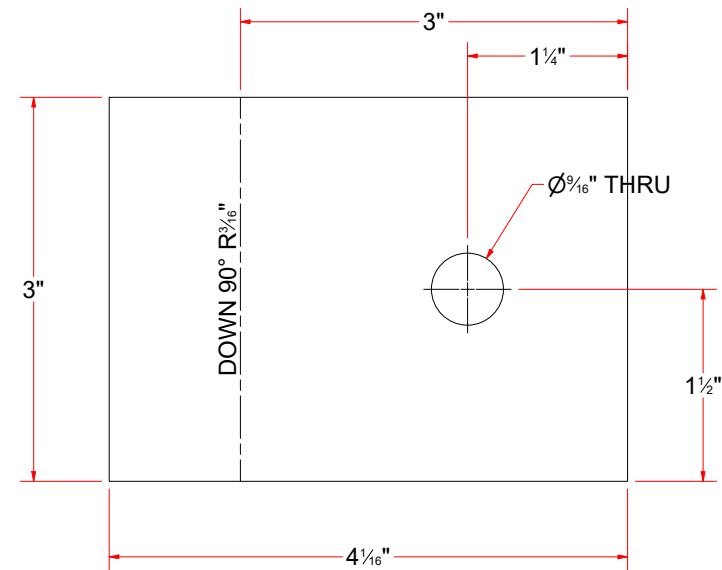




TB3AABF - Torque Plate #3/16" x 3 1/2" x 7 1/2" LG.



TB3AABD - Sheet Metal #7 Ga. x 3" x 4" LG.



AVW EQUIPMENT CO., INC.  
105 S. 9TH AVENUE  
MAYWOOD, IL 60153  
Tel: 708-343-7738 Fax: 708-343-9065  
WWW.AVWEQUIPMENT.COM

**- COMPANY PROPRIETARY NOTE -**

THIS DRAWING AND ITS DESIGNS ARE PROPERTY OF AVW EQUIPMENT CO. & IT IS NOT TO BE USED OR REPRODUCED WITHOUT THE PERMISSION FROM AVW CO.

DRAWN BY

Ljubomir

CUSTOMER: AVW Equipment

CHECKED BY

PROJECT: Tire Shine

QTY

DESCRIPTION: Torque Plate #3/16" x 3 1/2" x 7 1/2" LG.

RELEASE DATE

8/7/2021

PART NUMBER: TB3AABE

REV# 1

DIMENSION ARE IN INCHES & PROVIDED PRIOR TO SURFACE TREATMENTS, UNLESS NOTED.

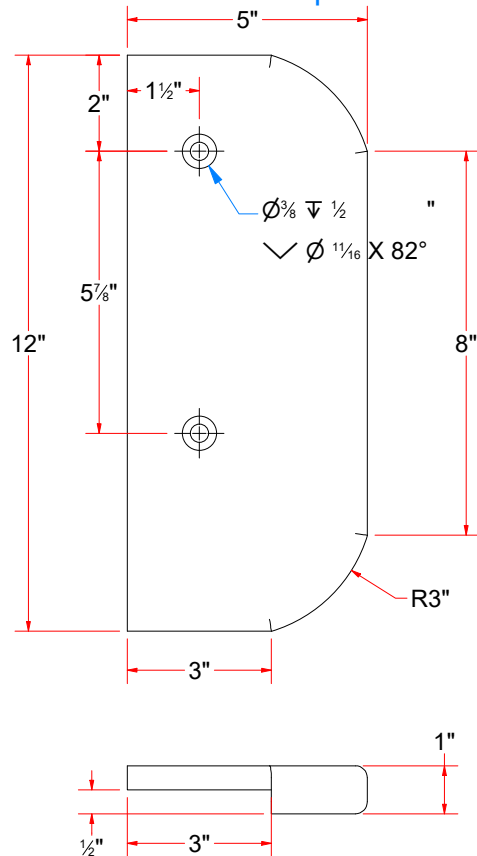
SIZE A

EST WEIGHT:

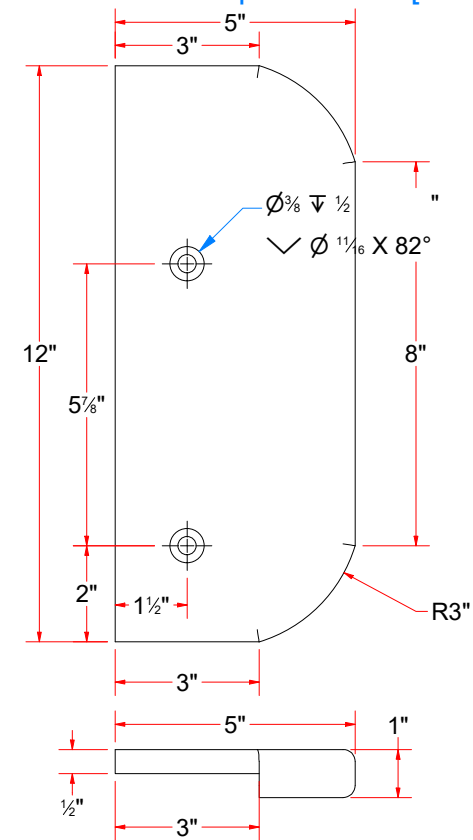
SHEET 17 of 40



TB3AABC - Rear Bumper 12" LG. [Driver]



TB3BABC - Rear Bumper 12" LG. [Passenger]



AVW EQUIPMENT CO., INC.  
105 S. 9TH AVENUE  
MAYWOOD, IL 60153  
Tel: 708-343-7738 Fax: 708-343-9065  
WWW.AVWEQUIPMENT.COM

**- COMPANY PROPRIETARY NOTE -**

THIS DRAWING AND ITS DESIGNS ARE PROPERTY OF AVW EQUIPMENT CO. & IT IS NOT TO BE USED OR REPRODUCED WITHOUT THE PERMISSION FROM AVW CO.

DRAWN BY

Ljubomir

CUSTOMER: AVW Equipment

CHECKED BY

PROJECT: Tire Shine

QTY

DESCRIPTION: Rear Bumper 12" LG. [Driver]

RELEASE DATE

8/7/2021

PART NUMBER: TB3AABC

REV# 1

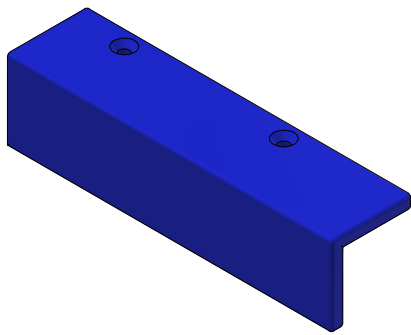
DIMENSION ARE IN INCHES & PROVIDED PRIOR TO SURFACE TREATMENTS, UNLESS NOTED.

SIZE  
A

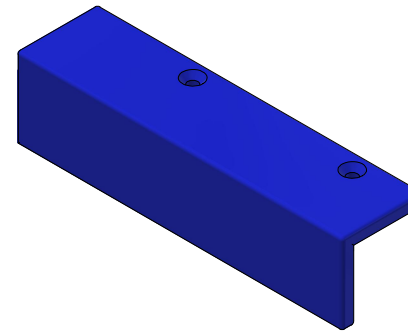
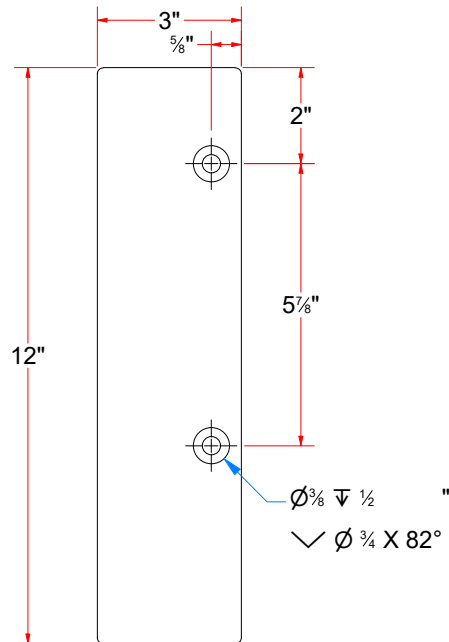
EST WEIGHT:

SHEET 18 of 40

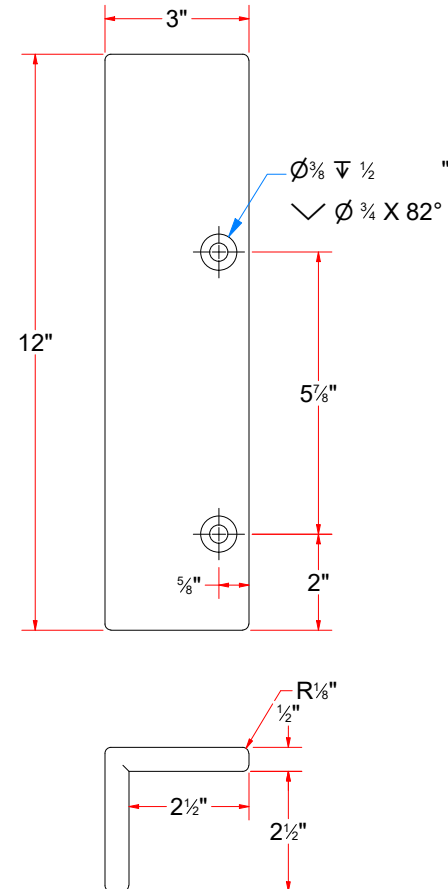
PATH: L:\Libraries\Productivity\Tire Washer\Brush Drive Assembly\Hydraulic\Parts\TB3AABC - Bumper Plate [Hyd. M. Mount] [Driver].ipt



TB3AABB - Rear Exit Cover [Driver]



TB3BABB - Rear Exit Cover [Passenger]



AVW EQUIPMENT CO., INC.  
105 S. 9TH AVENUE  
MAYWOOD, IL 60153  
Tel: 708-343-7738 Fax: 708-343-9065  
WWW.AVWEQUIPMENT.COM

**- COMPANY PROPRIETARY NOTE -**

THIS DRAWING AND ITS DESIGNS ARE PROPERTY OF AVW EQUIPMENT CO. & IT IS NOT TO BE USED OR REPRODUCED WITHOUT THE PERMISSION FROM AVW CO.

DRAWN BY

Ljubomir

CUSTOMER: AVW Equipment

CHECKED BY

PROJECT: Tire Shine

QTY

DESCRIPTION: Rear Exit Cover [Driver]

RELEASE DATE

8/7/2021

PART NUMBER: TB3AABB

REV# 1

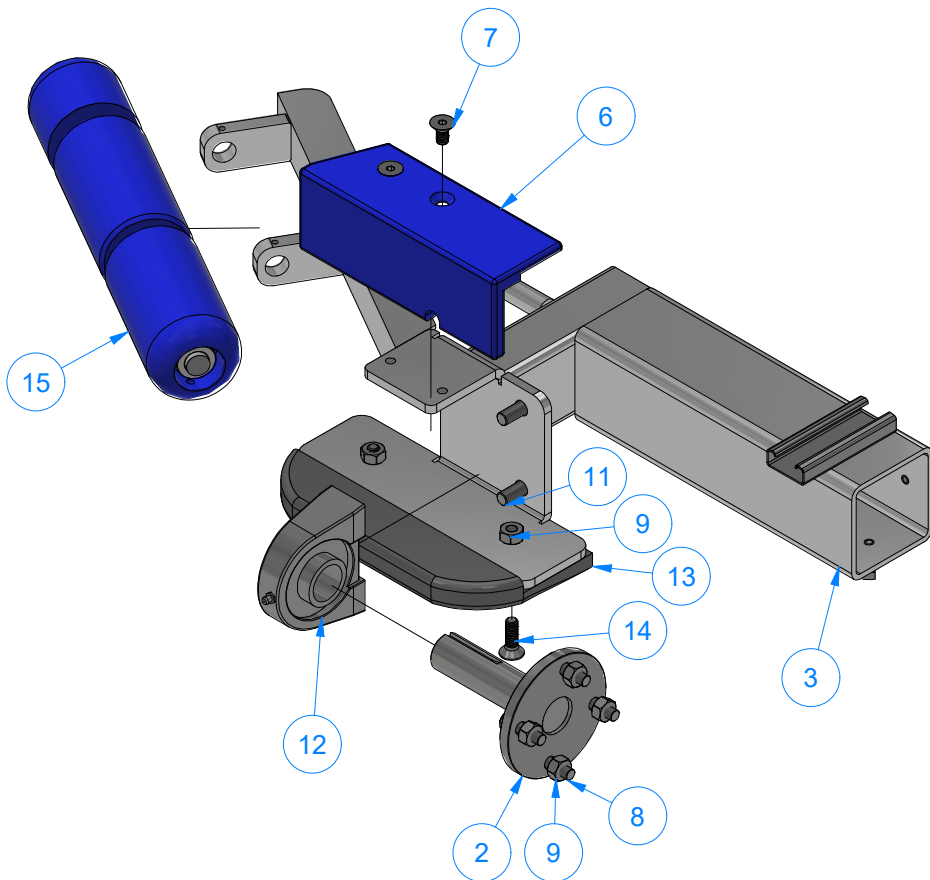
DIMENSION ARE IN INCHES & PROVIDED PRIOR TO SURFACE TREATMENTS, UNLESS NOTED.

SIZE  
A

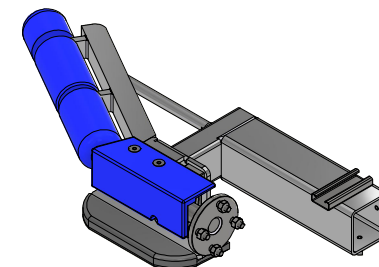
EST WEIGHT:

SHEET 19 of 40

PATH: L:\Libraries\Productivity\Tire Washer\Brush Drive Assembly\Hydraulic\Parts\TB3AABB - Hyd. Motor - Top Cover [Driver].ipt



Parts List		
ITEM	QTY	DESCRIPTION
2	1	4-1/2" Stub Shaft
3	1	Frame For Driver Push Bar Assembly
6	1	Top Plastic Cover [Driver]
7	2	FLAT HEAD SCREW 3/8"-16x3/4"
8	4	3/8" - 16 x 1 1/4" UNC Hex Screw
9	6	3/8"-16 18-8ss Heavy Hex Nut
11	2	7/16" - 14 x 1.13" UNC Hex Screw
12	1	Tapped Base Bearing 1-1/4"
13	1	Bumper Plate 10"
14	2	Flat Head Screw 3/8"-16 x 1-1/4"
15	1	Push Bar Roller Guide Set [D]



## TB2AAA - Push Bar Assembly [Driver]



AVW EQUIPMENT CO., INC.  
105 S. 9TH AVENUE  
MAYWOOD, IL 60153  
Tel: 708-343-7738 Fax: 708-343-9065  
WWW.AVWEQUIPMENT.COM

### - COMPANY PROPRIETARY NOTE -

THIS DRAWING AND ITS DESIGNS ARE PROPERTY OF AVW EQUIPMENT CO. & IT IS NOT TO BE USED OR REPRODUCED WITHOUT THE PERMISSION FROM AVW CO.

DRAWN BY

Ljubomir

CUSTOMER: AVW Equipment

CHECKED BY

PROJECT: Tire Shine

QTY

DESCRIPTION: Push Bar Assembly [Driver]

RELEASE  
DATE

8/7/2021

PART NUMBER: TB2AAA

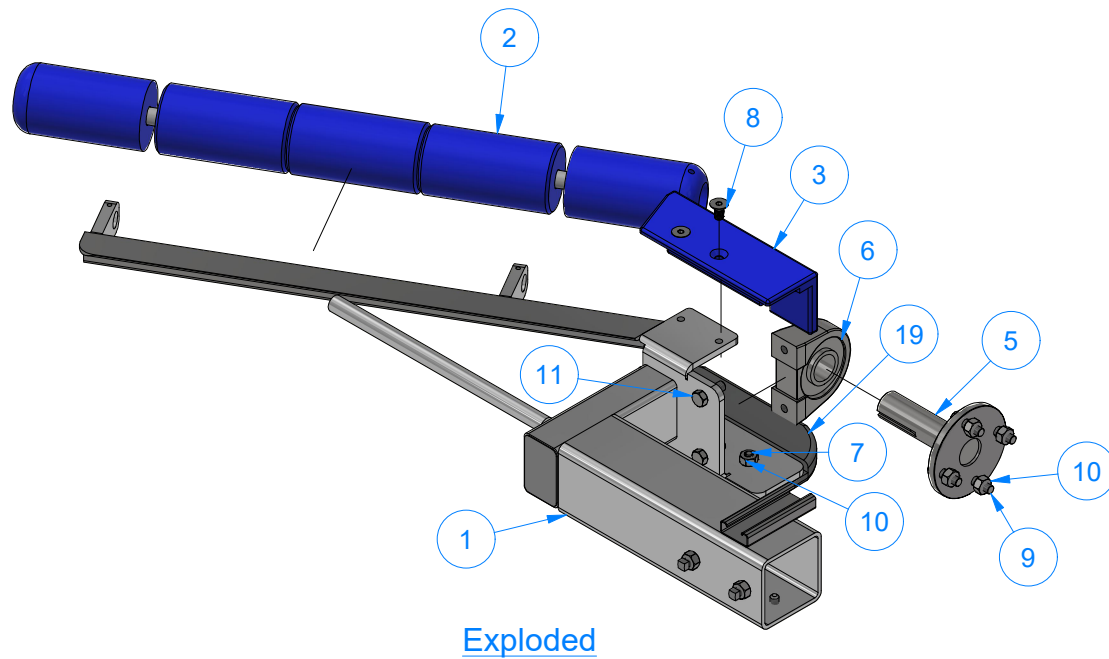
REV# 1

DIMENSION ARE IN INCHES & PROVIDED PRIOR  
TO SURFACE TREATMENTS, UNLESS NOTED.

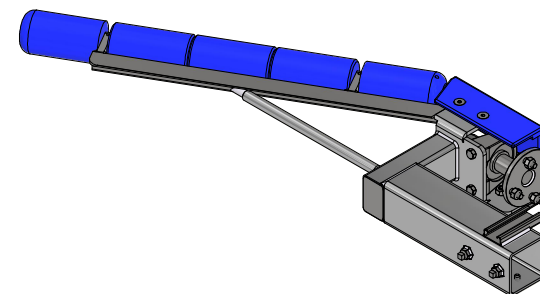
SIZE  
A

EST WEIGHT:

SHEET 20 of 40



Parts List		
ITEM	QTY	DESCRIPTION
1	1	Frame For Passenger Push Bar Assembly
2	1	Roller Guide Set
3	1	Top Plastic Cover [Passenger]
5	1	4-1/2" Stub Shaft
6	1	Tapped Base Bearing 1-1/4"
7	2	Flat Head Screw 3/8"-16 x 1-1/4"
8	2	FLAT HEAD SCREW 3/8"-16x3/4"
9	4	3/8" - 16 x 1 1/4" UNC Hex Screw
10	6	3/8"-16 18-8ss Heavy Hex Nut
11	2	7/16" - 14 x 1.13" UNC Hex Screw
19	1	Bumper Plate 10"



## TB3BAA - Passenger Push Bar Assembly



AVW EQUIPMENT CO., INC.  
105 S. 9TH AVENUE  
MAYWOOD, IL 60153  
Tel: 708-343-7738 Fax: 708-343-9065  
WWW.AVWEQUIPMENT.COM

### - COMPANY PROPRIETARY NOTE -

THIS DRAWING AND ITS DESIGNS ARE PROPERTY OF AVW EQUIPMENT CO. & IT IS NOT TO BE USED OR REPRODUCED WITHOUT THE PERMISSION FROM AVW CO.

DRAWN BY

Ljubomir

CUSTOMER: AVW Equipment

CHECKED BY

PROJECT: Tire Shine

QTY

DESCRIPTION: Passenger Push Bar Assembly

RELEASE DATE

8/7/2021

PART NUMBER: TB3BAA

REV# 1

DIMENSION ARE IN INCHES & PROVIDED PRIOR TO SURFACE TREATMENTS, UNLESS NOTED.

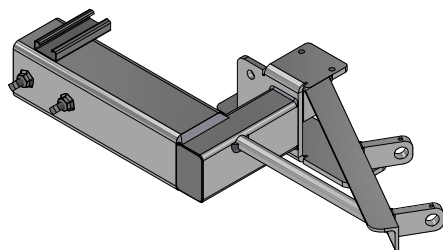
SIZE  
A

EST WEIGHT:

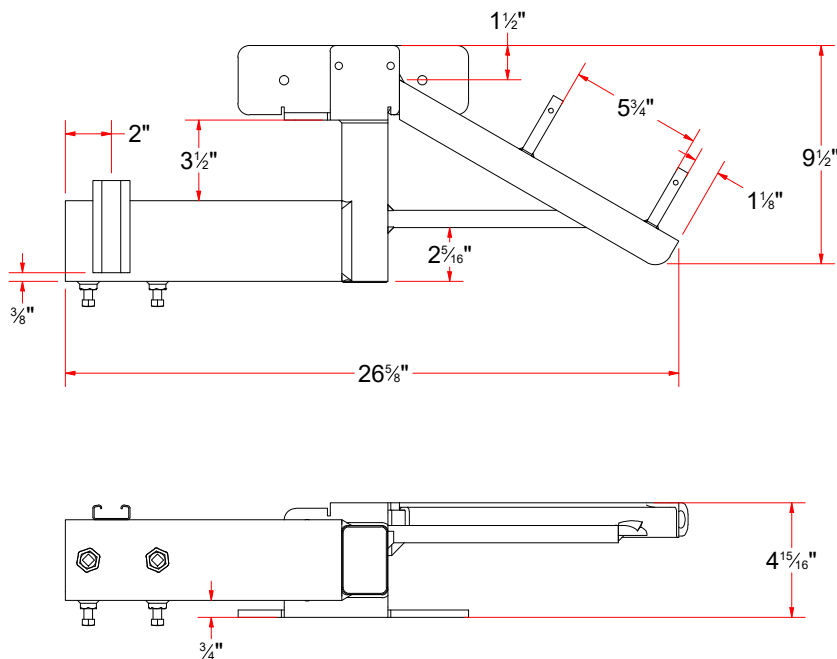
SHEET 21 of 40

PATH: L:\Libraries\Productivity\Tire Washer\Push Bar Assembly\TB3BAA - Passenger Push Bar Assembly.iam

# TB2AAAA - Frame For Driver Push Bar Assembly



Parts List		
ITEM	QTY	DESCRIPTION
1	2	Support Bracket for Roller Guide Shaft
4	1	Angle #3/16" x 1 1/2" x 1 1/2" x 14" LG.
5	4	SQUARE BOLT - 3/8"-16 x 3/4" L
6	1	Unistrut 1/2" x 1-1/2" x 4"
7	1	Bearing Support Plate [Driver]
10	1	Sq. Tub. Assem. 3-1/2" x 12"
11	1	Rct.Tubing [7 Ga.] 2" x 3" x 7" LG.
13	1	Support Plate #3/16 x 1 1/2" x 1 1/2"
14	1	Support Shaft 3/4" x 10"
15	1	Sheet Metal [18 Ga.] 1 7/8" x 2 7/8"



AVW EQUIPMENT CO., INC.  
105 S. 9TH AVENUE  
MAYWOOD, IL 60153  
Tel: 708-343-7738 Fax: 708-343-9065  
WWW.AVWEQUIPMENT.COM

DRAWN BY

Ljubomir

CUSTOMER: AVW Equipment

CHECKED BY

PROJECT: Tire Shine

QTY

DESCRIPTION: Frame For Driver Push Bar Assembly

## - COMPANY PROPRIETARY NOTE -

THIS DRAWING AND ITS DESIGNS ARE PROPERTY OF AVW EQUIPMENT CO. & IT IS NOT TO BE USED OR REPRODUCED WITHOUT THE PERMISSION FROM AVW CO.

RELEASE DATE

8/7/2021

PART NUMBER: TB2AAAA

REV# 1

DIMENSION ARE IN INCHES & PROVIDED PRIOR TO SURFACE TREATMENTS, UNLESS NOTED.

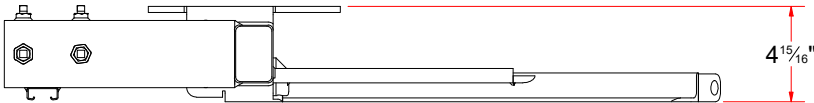
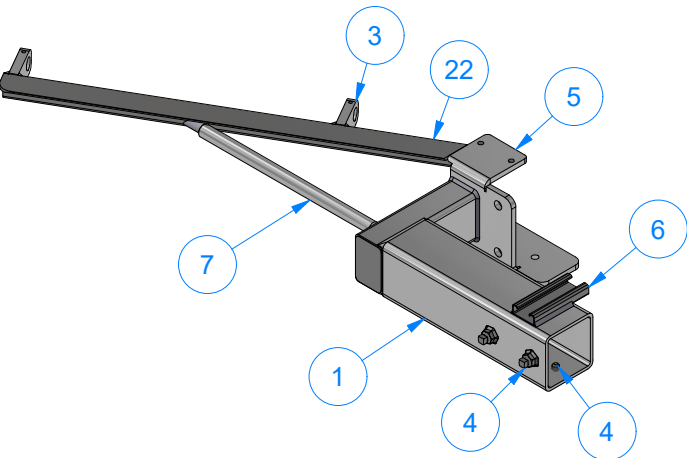
SIZE  
A

EST WEIGHT:

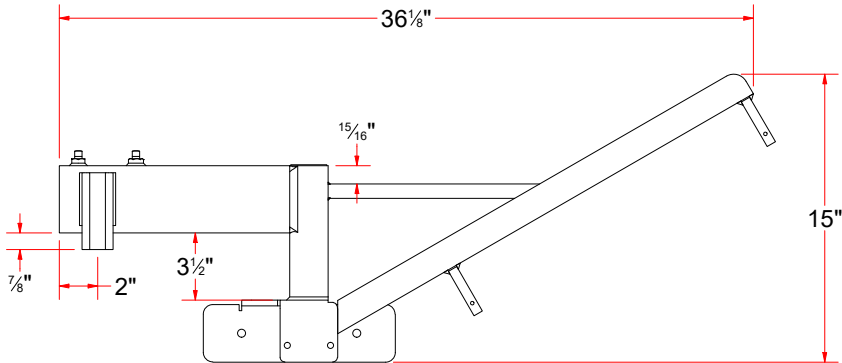
SHEET 22 of 40



TB3BAAA - Frame For Passenger Push Bar Assembly



Back



Top

Parts List

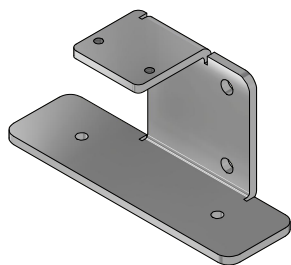
ITEM	QTY	DESCRIPTION
1	1	Sq. Tub. Assem. 3-1/2" x 12"
2	1	Support Plate #3/16 x 1 1/2" x 1 1/2"
3	2	Support Bracket for Roller Guide Shaft
4	4	SQUARE BOLT - 3/8"-16 x 3/4" L
5	1	Bearing Support Plate [Passenger]
6	1	Unistrut 1/2" x 1-1/2" x 4"
7	1	Support Shaft 3/4" x 12-1/2"
9	1	Rct. Tubing [7 Ga.] 2" x 3" x 7" LG.
10	1	Sheet Metal [18 Ga.] 1 7/8" x 2 7/8"
22	1	Angle #3/16" x 1-1/2" x 1-1/2" x 25 LG.



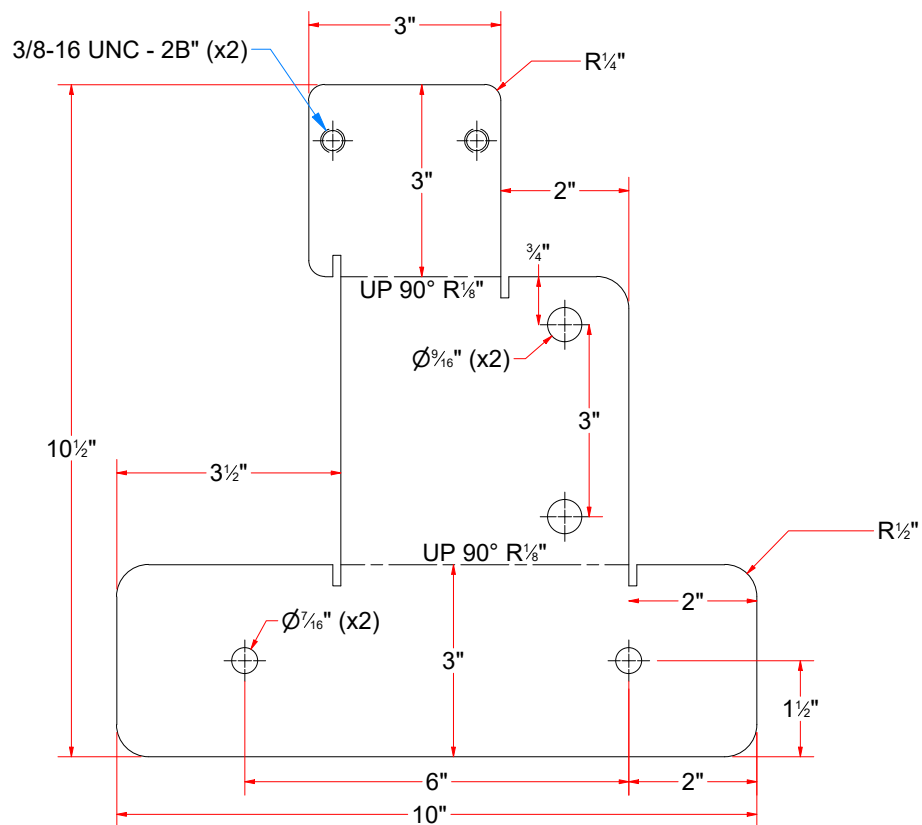
AVW EQUIPMENT CO., INC.  
105 S. 9TH AVENUE  
MAYWOOD, IL 60153  
Tel: 708-343-7738 Fax: 708-343-9065  
WWW.AVWEQUIPMENT.COM

**- COMPANY PROPRIETARY NOTE -**  
THIS DRAWING AND ITS DESIGNS ARE PROPERTY OF AVW EQUIPMENT CO. &  
IT IS NOT TO BE USED OR REPRODUCED WITHOUT THE PERMISSION FROM AVW CO.

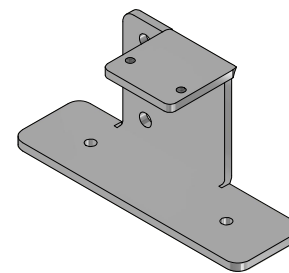
DRAWN BY	Ljubomir	CUSTOMER: AVW Equipment	
CHECKED BY		PROJECT: Tire Shine	
QTY		DESCRIPTION: Frame For Passenger Push Bar Assembly	
RELEASE DATE	8/7/2021	PART NUMBER: TB3BAAA	REV# 1
DIMENSION ARE IN INCHES & PROVIDED PRIOR TO SURFACE TREATMENTS, UNLESS NOTED.		SIZE A	EST WEIGHT: SHEET 23 of 40



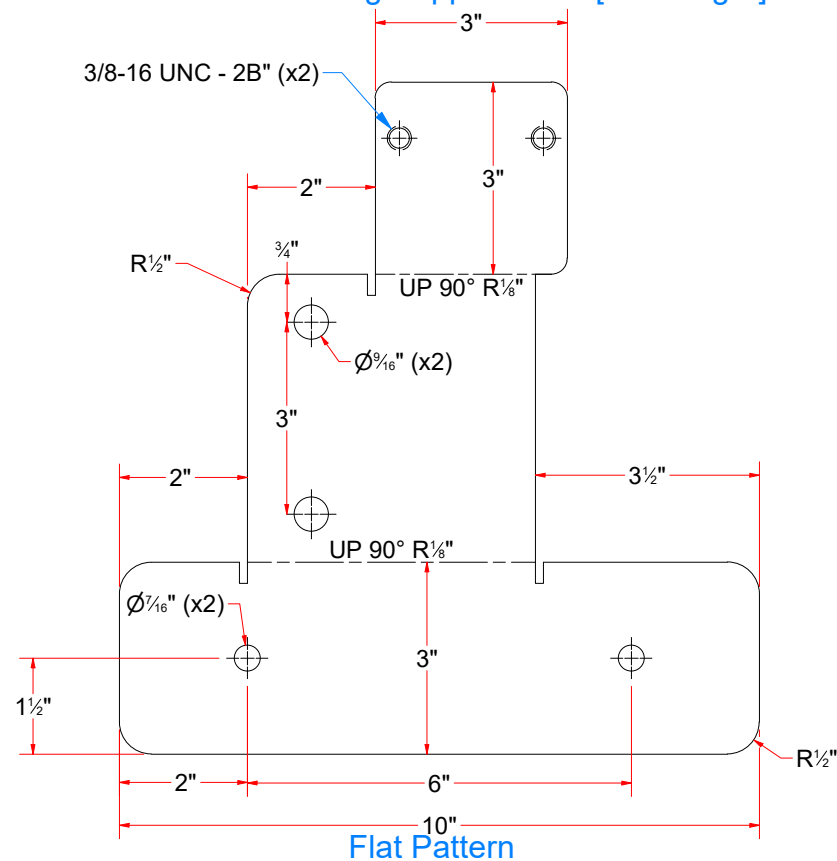
TB3AAAAB - Bearing Support Plate [Driver]



Flat Pattern



TB3BAAAB - Bearing Support Plate [Passenger]



Flat Pattern



AVW EQUIPMENT CO., INC.  
105 S. 9TH AVENUE  
MAYWOOD, IL 60153  
Tel: 708-343-7738 Fax: 708-343-9065  
WWW.AVWEQUIPMENT.COM

**- COMPANY PROPRIETARY NOTE -**

THIS DRAWING AND ITS DESIGNS ARE PROPERTY OF AVW EQUIPMENT CO. & IT IS NOT TO BE USED OR REPRODUCED WITHOUT THE PERMISSION FROM AVW CO.

DRAWN BY

Ljubomir

CUSTOMER: AVW Equipment

CHECKED BY

PROJECT: Tire Shine

QTY

DESCRIPTION: Bearing Support Plate [Driver]

RELEASE DATE

8/7/2021

PART NUMBER: TB3AAAAB

REV# 1

DIMENSION ARE IN INCHES & PROVIDED PRIOR TO SURFACE TREATMENTS, UNLESS NOTED.

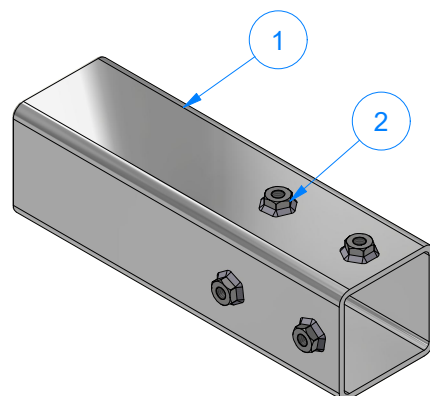
SIZE A

EST WEIGHT:

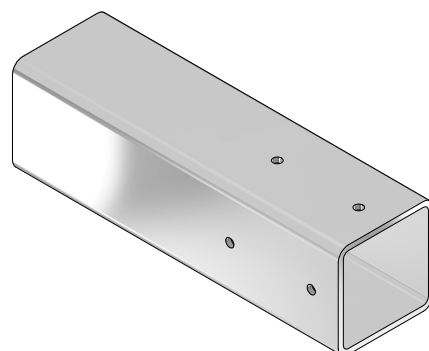
SHEET 24 of 40

PATH: L:\Libraries\Productivity\Tire Washer\Push Bar Assembly\Parts\TB3AAAAB - Bearing Support Plate [Driver].ipt

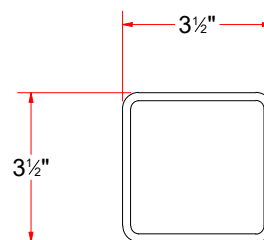
Parts List		
ITEM	QTY	DESCRIPTION
1	1	Sq. Tubing 3 1/2" x 3/16" x 12" LG.
2	4	3/8"-16 18-8ss Heavy Hex Nut



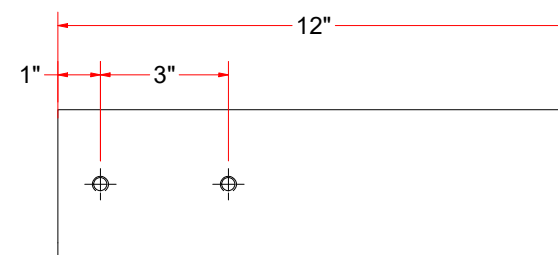
TB3AAAAA - Sq. Tub. Assem. 3-1/2" x 12"



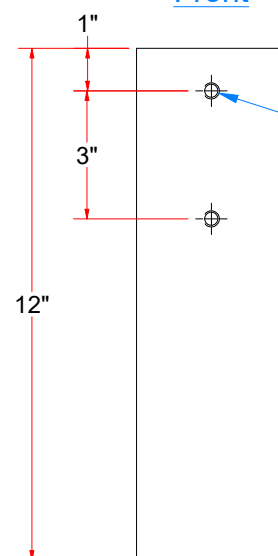
TB3AAAAA - Sq. Tubing 3 1/2" x 3/16" x 12" LG.



Front



Right



Bottom



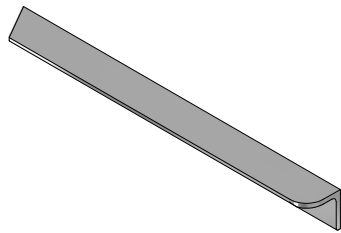
AVW EQUIPMENT CO., INC.  
105 S. 9TH AVENUE  
MAYWOOD, IL 60153  
Tel: 708-343-7738 Fax: 708-343-9065  
WWW.AVWEQUIPMENT.COM

**- COMPANY PROPRIETARY NOTE -**

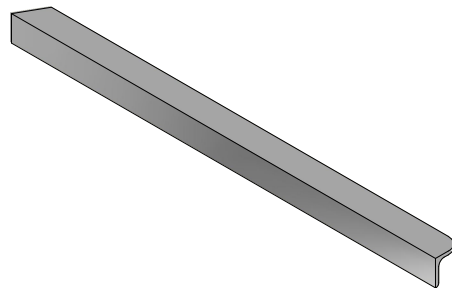
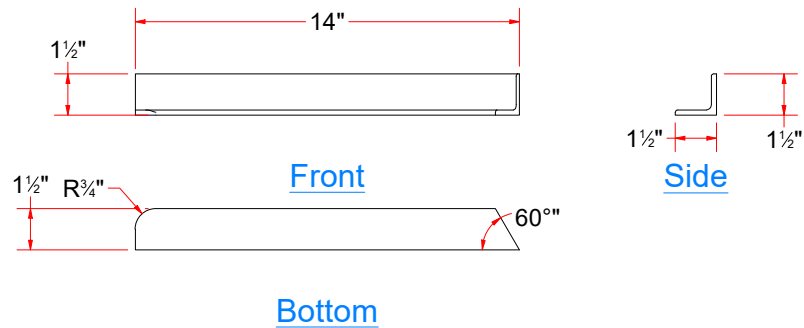
THIS DRAWING AND ITS DESIGNS ARE PROPERTY OF AVW EQUIPMENT CO. & IT IS NOT TO BE USED OR REPRODUCED WITHOUT THE PERMISSION FROM AVW CO.

DRAWN BY	Ljubomir	CUSTOMER: AVW Equipment	
CHECKED BY		PROJECT: Tire Shine	
QTY		DESCRIPTION: Sq. Tub. Assem. 3-1/2" x 12"	
RELEASE DATE	8/7/2021	PART NUMBER: TB3AAAAA	REV# 1
DIMENSION ARE IN INCHES & PROVIDED PRIOR TO SURFACE TREATMENTS, UNLESS NOTED.		SIZE A	EST WEIGHT:
			SHEET 25 of 40

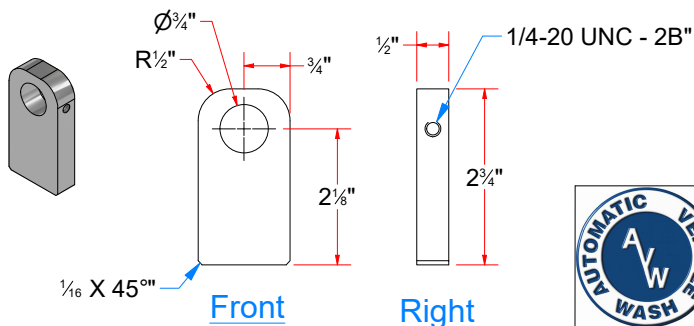
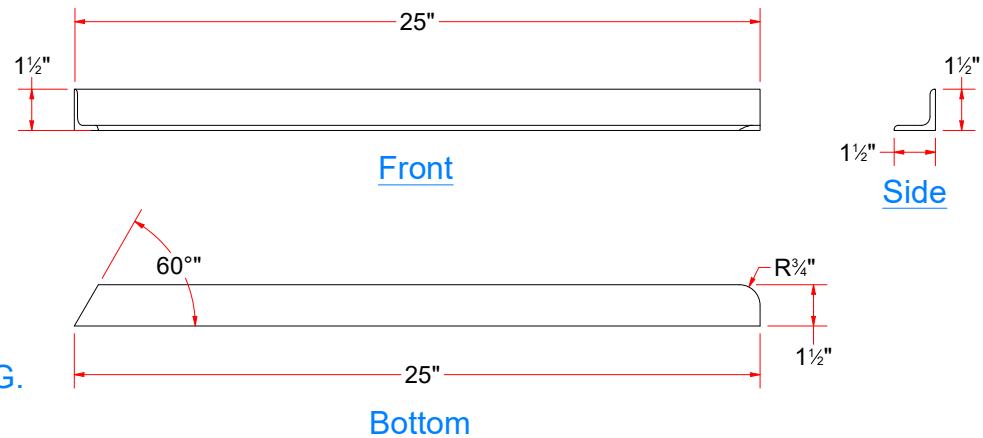
PATH:L:\Libraries\Productivity\Tire Washer\Push Bar Assembly\Parts\TB3AAAAA - Sq. Tubing Assembly 3.5 in x 3-16 in x 12 in LG..iam




TB2AAAAC - Angle #3/16" x 1 1/2" x 1 1/2" x 14" LG.



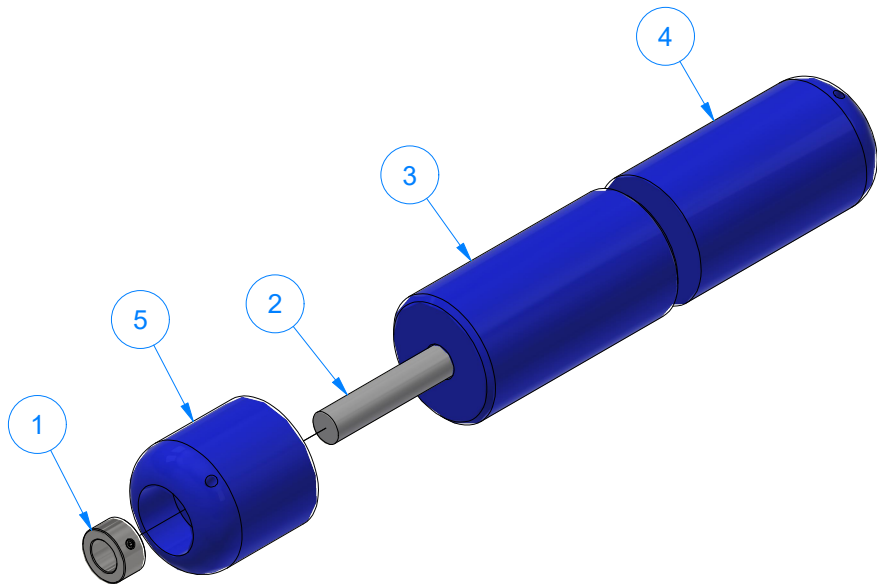
TB3BAAAC - Angle #3/16" x 1-1/2" x 1-1/2" x 25 LG.



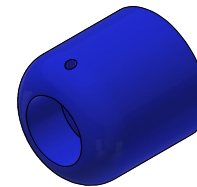
TB3AAAAE - Support Bracket for Roller Guide Shaft

	AVW EQUIPMENT CO., INC. 105 S. 9TH AVENUE MAYWOOD, IL 60153 Tel: 708-343-7738 Fax: 708-343-9065 WWW.AVWEQUIPMENT.COM		DRAWN BY	Ljubomir	CUSTOMER: AVW Equipment			
			CHECKED BY		PROJECT: Tire Shine			
			QTY		DESCRIPTION: Angle #3/16" x 1-1/2" x 1-1/2" x 25 LG.			
	<b>- COMPANY PROPRIETARY NOTE -</b> THIS DRAWING AND ITS DESIGNS ARE PROPERTY OF AVW EQUIPMENT CO. & IT IS NOT TO BE USED OR REPRODUCED WITHOUT THE PERMISSION FROM AVW CO.			RELEASE DATE	8/7/2021	PART NUMBER: TB3BAAAC		REV# 1
DIMENSION ARE IN INCHES & PROVIDED PRIOR TO SURFACE TREATMENTS, UNLESS NOTED.				SIZE <b>A</b>	EST WEIGHT:	SHEET 26 of 40		
				PATH:L:\Libraries\Productivity\Tire Washer\Push Bar Assembly\Parts\TB3BAAAC - 1-1_2 Angle Bar.ipt				

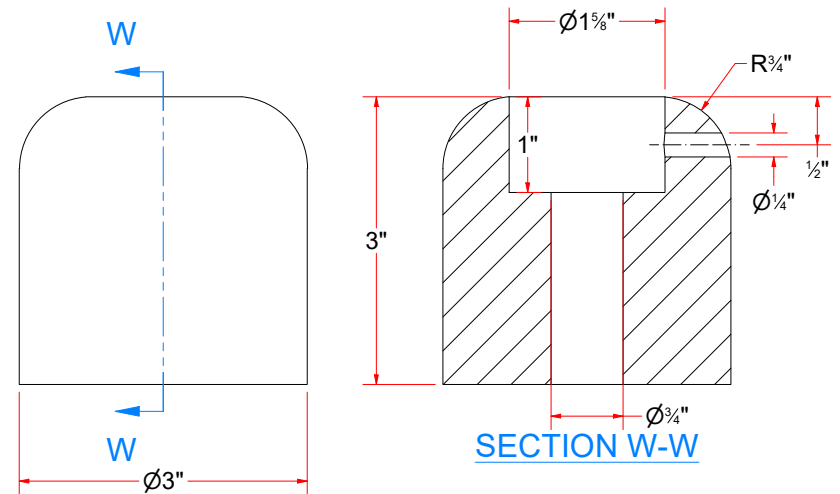
Parts List		
ITEM	QTY	DESCRIPTION
1	2	3_4 Set Screw Collar
2	1	Shaft 3/4" D x 15" LG.
3	1	UHMW Round 3" OD. x 13/16" ID. x 5 5/8" LG.
4	1	UHMW Round 3" OD. x 13/16" ID. x 5 5/8" LG.
5	1	UHMW ROUND - 3" OD. x 3/4" ID. x 3" LG.



TB2AAAD - Push Bar Roller Guide Set [D]



UHMW ROUND - 3" OD. x 3/4" ID. x 3" LG.



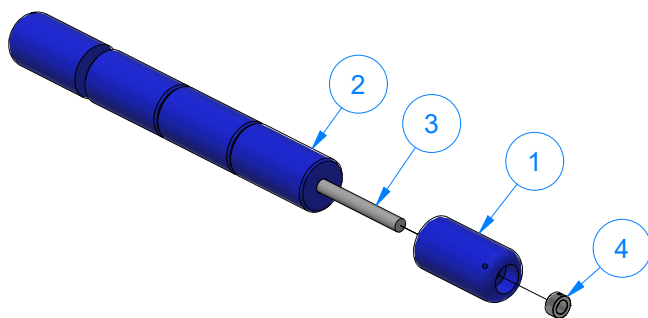
AVW EQUIPMENT CO., INC.  
105 S. 9TH AVENUE  
MAYWOOD, IL 60153  
Tel: 708-343-7738 Fax: 708-343-9065  
WWW.AVWEQUIPMENT.COM

**- COMPANY PROPRIETARY NOTE -**

THIS DRAWING AND ITS DESIGNS ARE PROPERTY OF AVW EQUIPMENT CO. & IT IS NOT TO BE USED OR REPRODUCED WITHOUT THE PERMISSION FROM AVW CO.

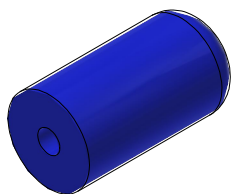
DRAWN BY	Ljubomir	CUSTOMER: AVW Equipment	
CHECKED BY		PROJECT: Tire Shine	
QTY		DESCRIPTION: Push Bar Roller Guide Set [D]	
RELEASE DATE	8/7/2021	PART NUMBER: TB2AAAD	REV# 1
DIMENSION ARE IN INCHES & PROVIDED PRIOR TO SURFACE TREATMENTS, UNLESS NOTED.		SIZE A	EST WEIGHT:
			SHEET 27 of 40

PATH:L:\Libraries\Productivity\Tire Washer\Push Bar Assembly\Parts\TB2AAAD - Roller Guide Set.iam



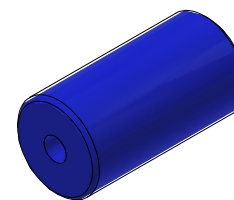
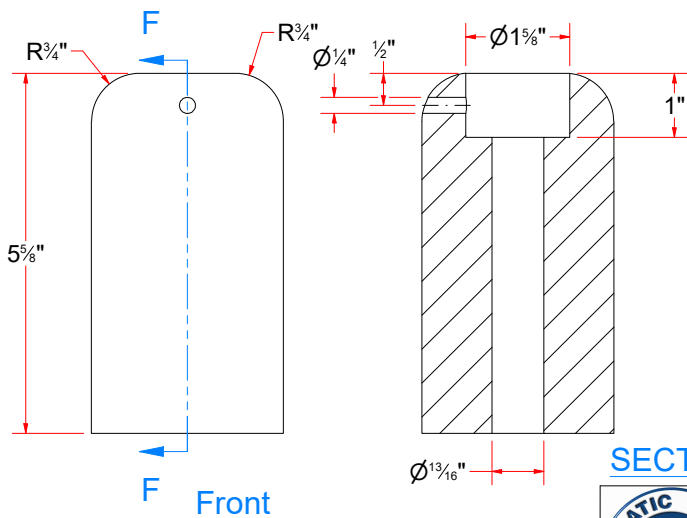
TB3AAAD - Roller Guide Set

Parts List		
ITEM	QTY	DESCRIPTION
1	2	UHMW Round 3" OD. x 13/16" ID. x 5 5/8" LG.
2	3	UHMW Round 3" OD. x 13/16" ID. x 5 5/8" LG.
3	1	Shaft 3/4" D x 23 3/8" LG.
4	2	3_4 Set Screw Collar



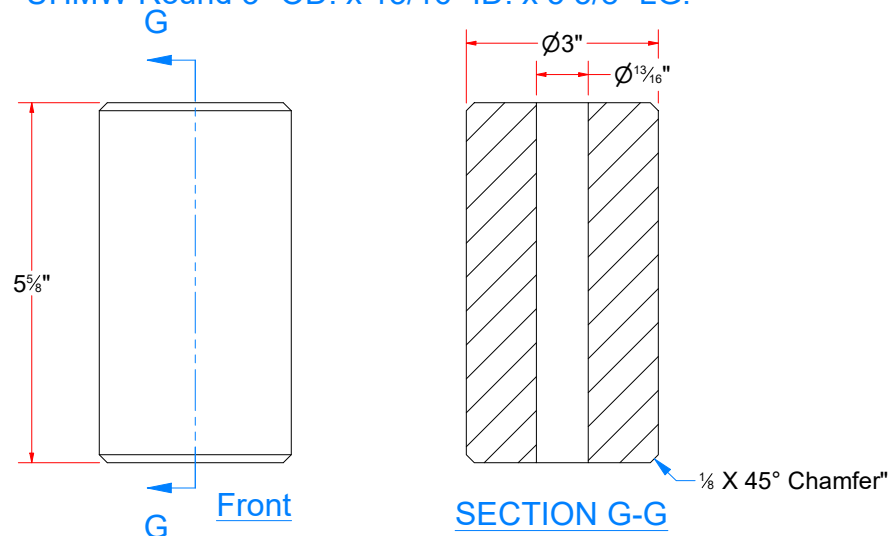
TB3AAADA

UHMW Round 3" OD. x 13/16" ID. x 5 5/8" LG.



TB3AAADB

UHMW Round 3" OD. x 13/16" ID. x 5 5/8" LG.



AVW EQUIPMENT CO., INC.  
105 S. 9TH AVENUE  
MAYWOOD, IL 60153  
Tel: 708-343-7738 Fax: 708-343-9065  
WWW.AVWEQUIPMENT.COM

**- COMPANY PROPRIETARY NOTE -**

THIS DRAWING AND ITS DESIGNS ARE PROPERTY OF AVW EQUIPMENT CO. & IT IS NOT TO BE USED OR REPRODUCED WITHOUT THE PERMISSION FROM AVW CO.

DRAWN BY

Ljubomir

CUSTOMER: AVW Equipment

CHECKED BY

PROJECT: Tire Shine

QTY

DESCRIPTION: Roller Guide Set

RELEASE DATE

8/7/2021

PART NUMBER: TB3AAAD

REV# 1

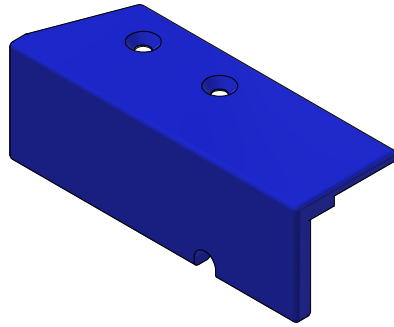
DIMENSION ARE IN INCHES & PROVIDED PRIOR TO SURFACE TREATMENTS, UNLESS NOTED.

SIZE A

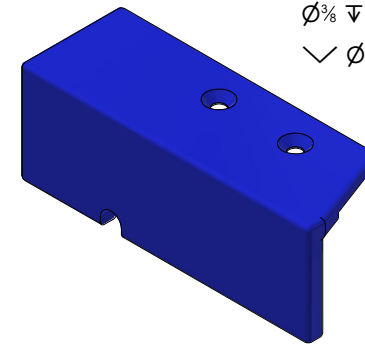
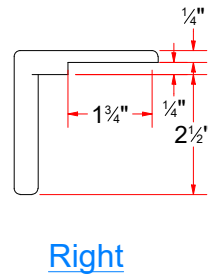
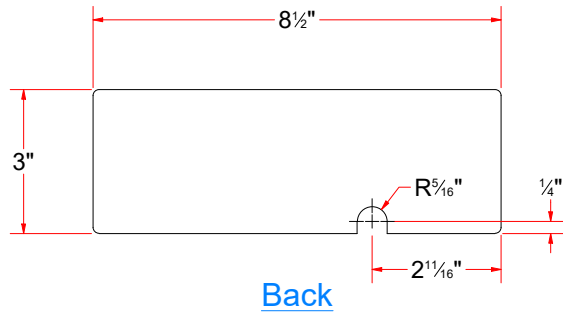
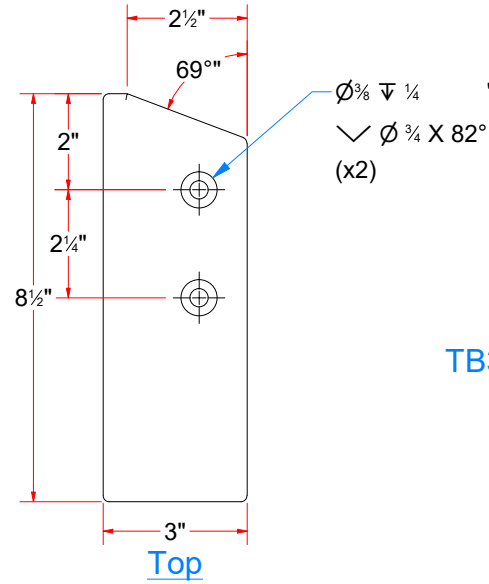
EST WEIGHT:

SHEET 28 of 40

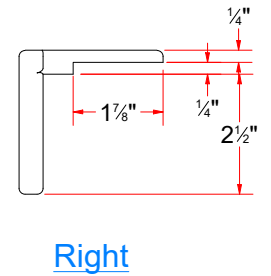
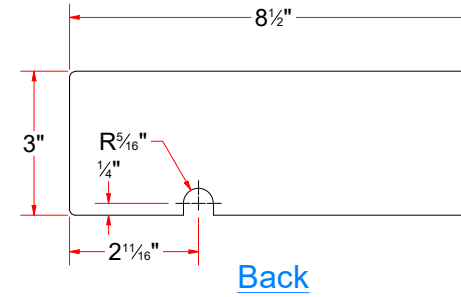
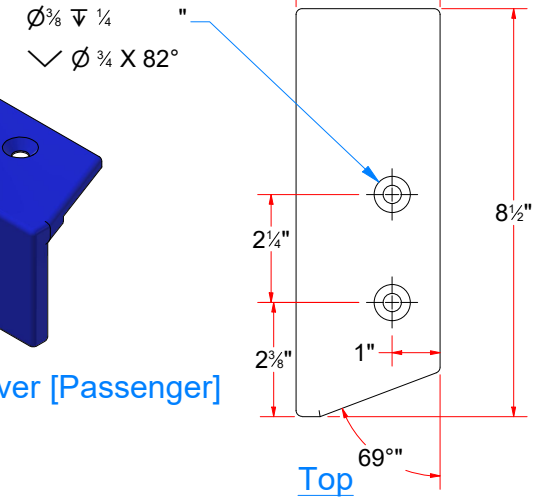




TB3AAAC - Top Plastic Cover [Driver]



TB3BAAC - Top Plastic Cover [Passenger]



AVW EQUIPMENT CO., INC.  
105 S. 9TH AVENUE  
MAYWOOD, IL 60153  
Tel: 708-343-7738 Fax: 708-343-9065  
WWW.AVWEQUIPMENT.COM

**- COMPANY PROPRIETARY NOTE -**

THIS DRAWING AND ITS DESIGNS ARE PROPERTY OF AVW EQUIPMENT CO. & IT IS NOT TO BE USED OR REPRODUCED WITHOUT THE PERMISSION FROM AVW CO.

DRAWN BY

Ljubomir

CUSTOMER: AVW Equipment

CHECKED BY

PROJECT: Tire Shine

QTY

DESCRIPTION: Top Plastic Cover [Driver]

RELEASE DATE

8/7/2021

PART NUMBER: TB3AAAC

REV# 1

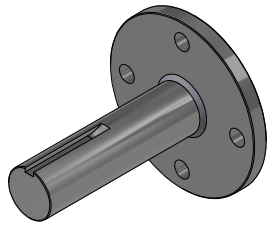
DIMENSION ARE IN INCHES & PROVIDED PRIOR TO SURFACE TREATMENTS, UNLESS NOTED.

SIZE  
**A**

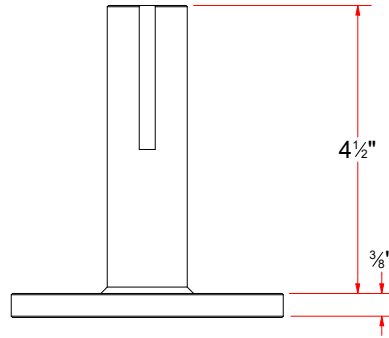
EST WEIGHT:

SHEET 29 of 40

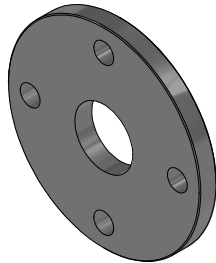
PATH: L:\Libraries\Productivity\Tire Washer\Push Bar Assembly\Parts\TB3AAAC - Top Plastic Cover [Driver].ipt



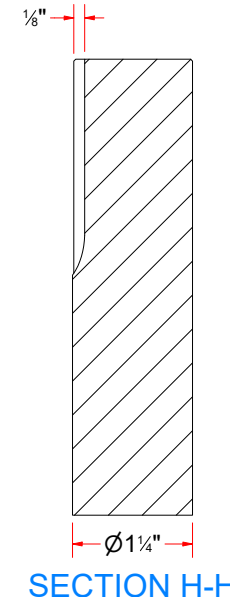
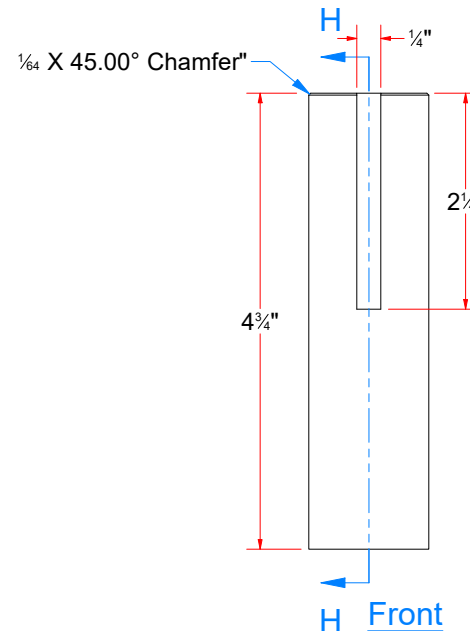
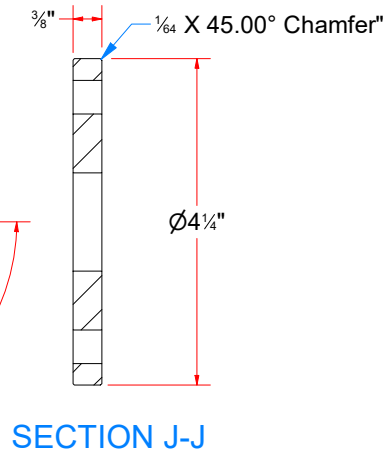
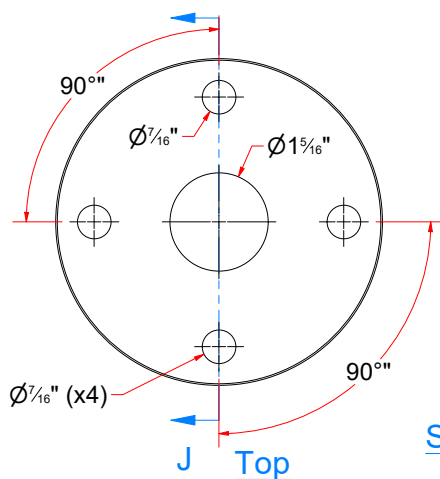
TB3AAAE - 4-1/2" Stub Shaft



TB3AAAEA - Round Shaft - 1 1/4" OD. x 4 3/4" LG.



TB3AAAEJ Bottom Plate For Stub Shaft (1-1\_4in ID)



Parts List		
ITEM	QTY	DESCRIPTION
1	1	Bottom Plate For Stub Shaft (1-1_4in ID)
2	1	Round Shaft - 1 1/4" OD. x 4 3/4" LG.



AVW EQUIPMENT CO., INC.  
105 S. 9TH AVENUE  
MAYWOOD, IL 60153  
Tel: 708-343-7738 Fax: 708-343-9065  
WWW.AVWEQUIPMENT.COM

**- COMPANY PROPRIETARY NOTE -**  
THIS DRAWING AND ITS DESIGNS ARE PROPERTY OF AVW EQUIPMENT CO. &  
IT IS NOT TO BE USED OR REPRODUCED WITHOUT THE PERMISSION FROM AVW CO.

DRAWN BY

Ljubomir

CUSTOMER: AVW Equipment

CHECKED BY

PROJECT: Tire Shine

QTY

DESCRIPTION: 4-1/2" Stub Shaft

RELEASE DATE

8/7/2021

PART NUMBER: TB3AAAE

REV# 1

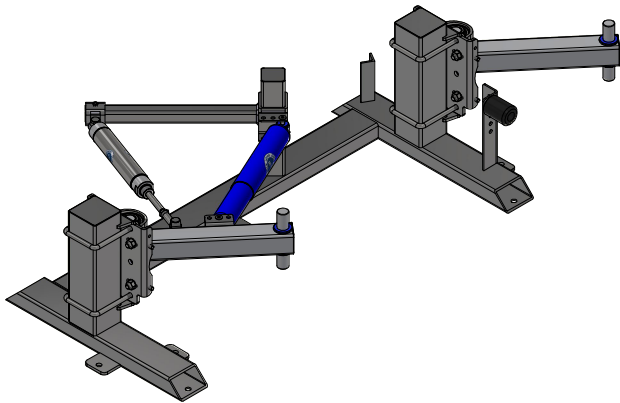
DIMENSION ARE IN INCHES & PROVIDED PRIOR  
TO SURFACE TREATMENTS, UNLESS NOTED.

SIZE  
A

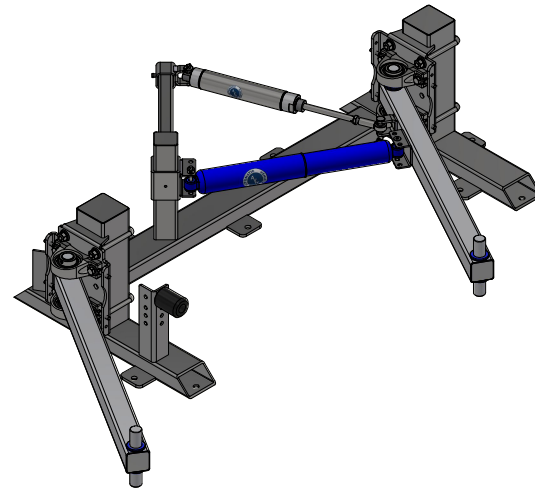
EST WEIGHT:

SHEET 30 of 40

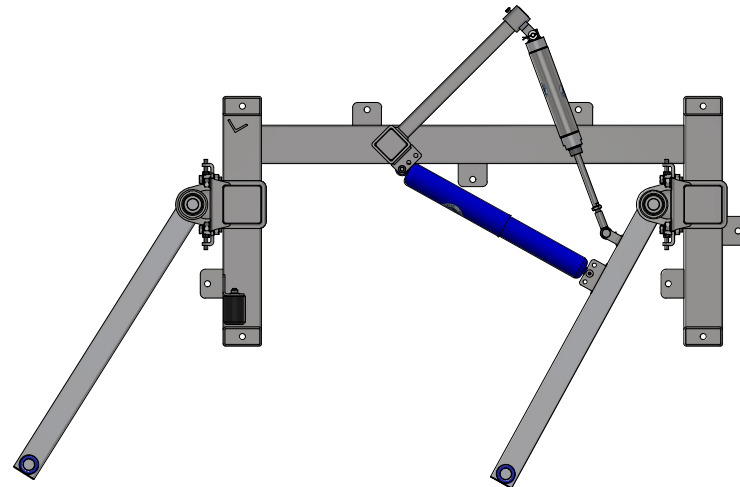
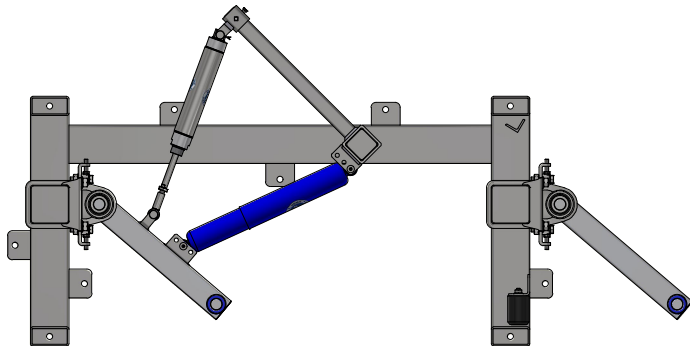
PATH: L:\Libraries\Productivity\Tire Washer\Push Bar Assembly\Parts\TB3ABD - 4-1\_2in Stub Shaft.iam



TB2AB - Tire Shine Frame Assembly [Driver]



TB3BB - Tire Dressing Frame Assembly [Passenger]



AVW EQUIPMENT CO., INC.  
105 S. 9TH AVENUE  
MAYWOOD, IL 60153  
Tel: 708-343-7738 Fax: 708-343-9065  
WWW.AVWEQUIPMENT.COM

**- COMPANY PROPRIETARY NOTE -**

THIS DRAWING AND ITS DESIGNS ARE PROPERTY OF AVW EQUIPMENT CO. &  
IT IS NOT TO BE USED OR REPRODUCED WITHOUT THE PERMISSION FROM AVW CO.

DRAWN BY

Ljubomir

CUSTOMER: AVW Equipment

CHECKED BY

PROJECT: Tire Shine

QTY

DESCRIPTION: Tire Dressing Frame Assembly [Passenger]

RELEASE  
DATE

8/7/2021

PART NUMBER: TB3BB

REV# 1

DIMENSION ARE IN INCHES & PROVIDED PRIOR  
TO SURFACE TREATMENTS, UNLESS NOTED.

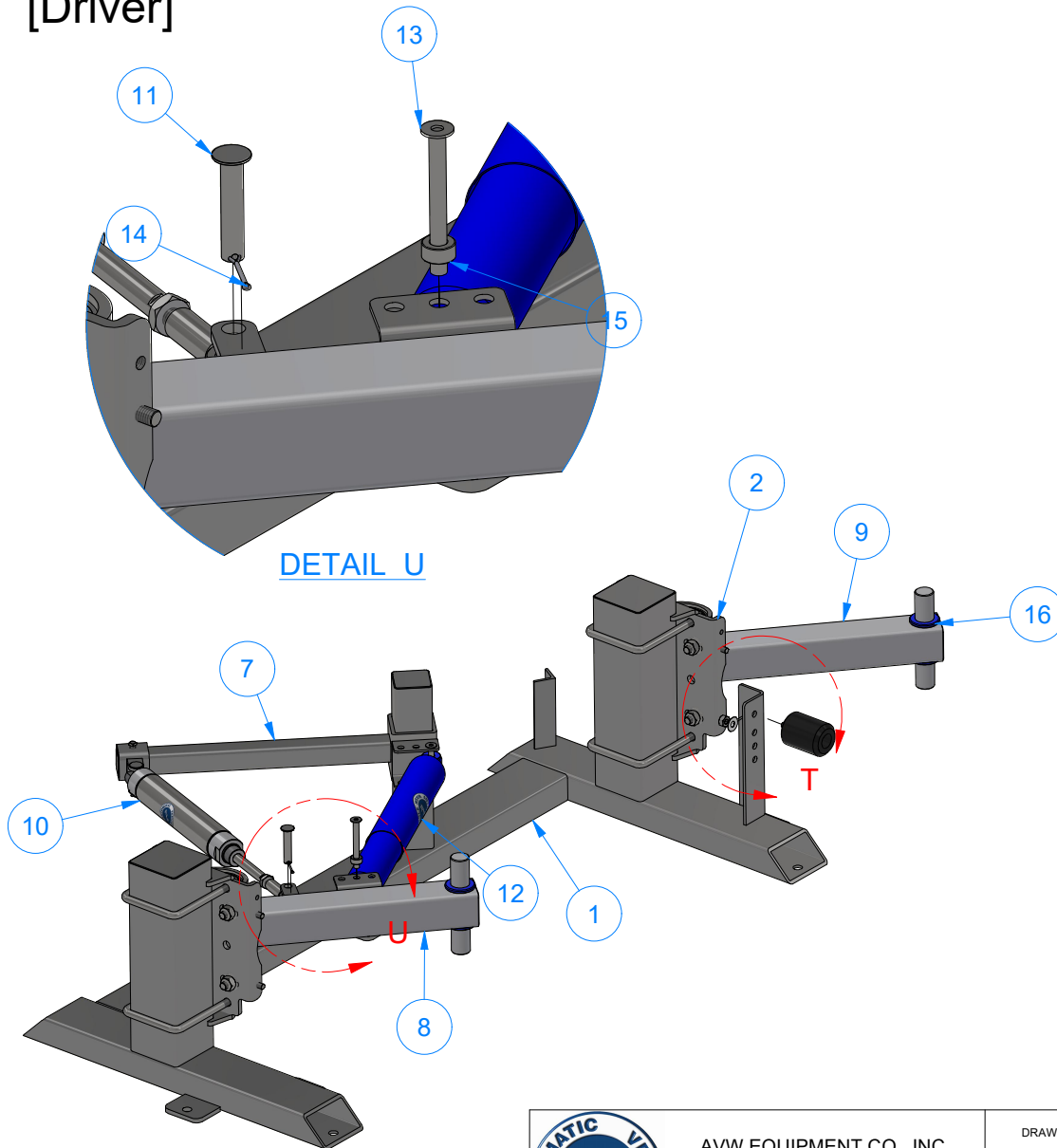
SIZE  
A

EST WEIGHT:

SHEET 31 of 40

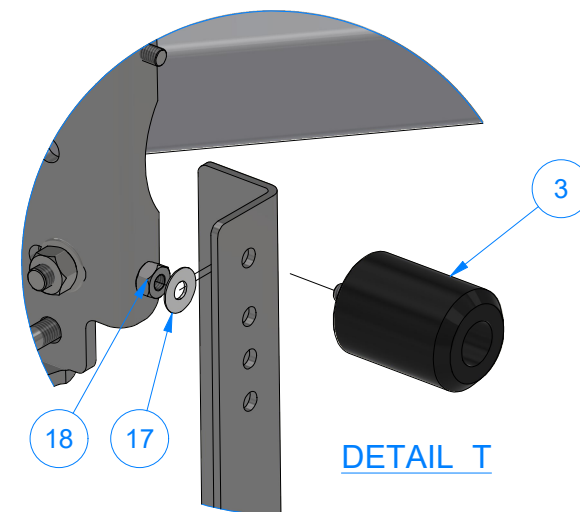
PATH: L:\Libraries\Productivity\Tire Washer\Tire Shine Frame Assembly\TB3BB - Tire Shine Frame Assembly [Passenger].iam

# TB2AB - Tire Shine Frame Assembly [Driver]



DETAIL U

Parts List		
ITEM	QTY	DESCRIPTION
1	1	Tire Shine Frame [Driver]
2	2	Arm Mount Plate Assembly
3	1	RUBBER BUMPER - LONG
7	1	Shock Absorber Mounting Bracket Assembly
8	1	18" Tire Shine Arm-W/ Brackets
9	1	18" Empty Tire Shine Arm
10	1	Air Cylinder 2" x 8"
11	1	Pin 1/2" x 2 1/2"
12	1	Blue Shock Absorber Assembly
13	1	Pin 3/8" x 3 1/2" LG
14	1	Cotter Pin
15	1	3/8" Set Screw Collar
16	8	UHMW Spacer 1-1/4"ID
17	1	3/8" Flat Washer
18	1	3/8"-16 18-8ss Heavy Hex Nut



DETAIL T



AVW EQUIPMENT CO., INC.  
105 S. 9TH AVENUE  
MAYWOOD, IL 60153  
Tel: 708-343-7738 Fax: 708-343-9065  
WWW.AVWEQUIPMENT.COM

## - COMPANY PROPRIETARY NOTE -

THIS DRAWING AND ITS DESIGNS ARE PROPERTY OF AVW EQUIPMENT CO. & IT IS NOT TO BE USED OR REPRODUCED WITHOUT THE PERMISSION FROM AVW CO.

DRAWN BY

Ljubomir

CUSTOMER: AVW Equipment

CHECKED BY

PROJECT: Tire Shine

QTY

DESCRIPTION: Tire Shine Frame Assembly [Driver]

RELEASE DATE

8/7/2021

PART NUMBER: TB2AB

REV# 1

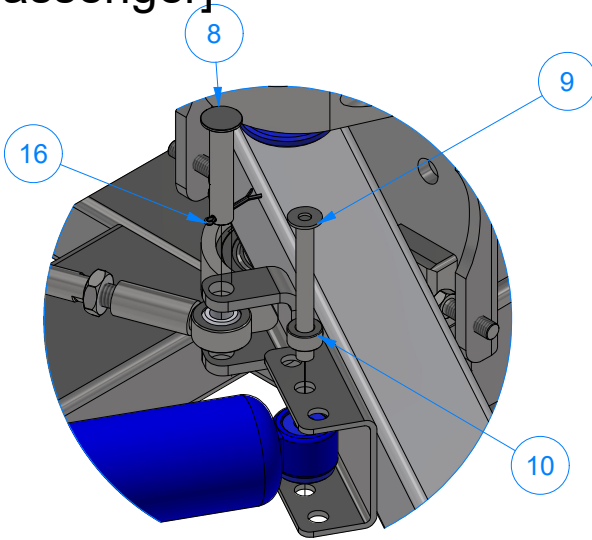
DIMENSION ARE IN INCHES & PROVIDED PRIOR TO SURFACE TREATMENTS, UNLESS NOTED.

SIZE  
A

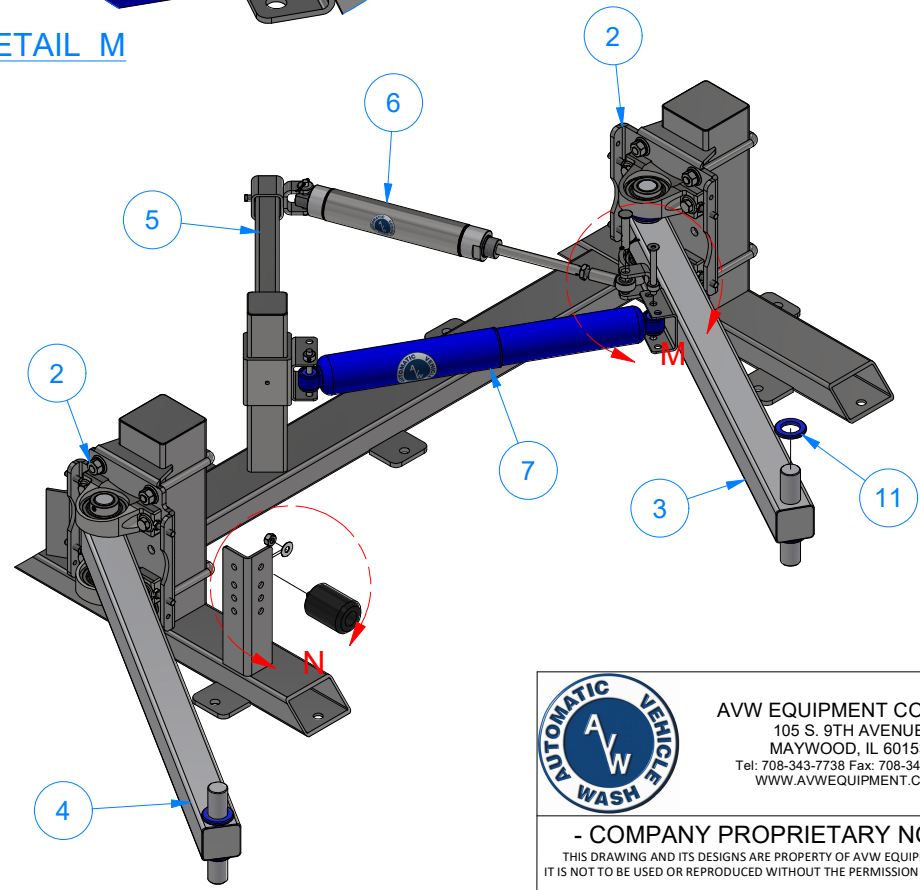
EST WEIGHT:

SHEET 32 of 40

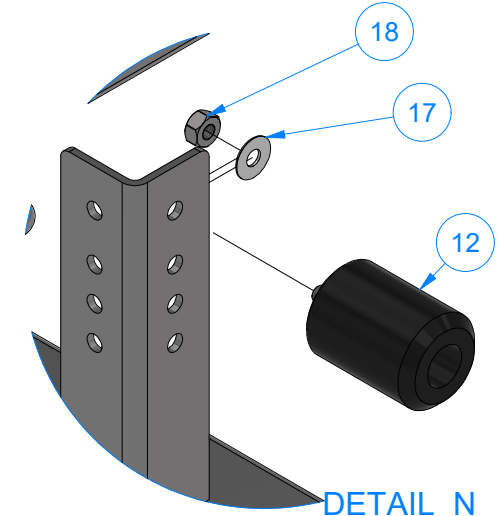
# TB3BB - Tire Dressing Frame Assembly [Passenger]



DETAIL M



Parts List		
ITEM	QTY	DESCRIPTION
1	1	Tire Shine Frame [Passenger]
2	2	Arm Mount Plate Assembly
3	1	Long Tire Shine Arm-W/ Brackets
4	1	34" Empty Tire Shine Arm
5	1	Shock Absorber Mounting Bracket Assembly
6	1	Air Cylinder 2" x 8"
7	1	Blue Shock Absorber Assembly
8	1	Pin 1/2" x 2 1/2"
9	1	Pin 3/8" x 3 1/2" LG
10	1	3/8" Set Screw Collar
11	8	UHMW Spacer 1-1/4"ID
12	1	RUBBER BUMPER - LONG
16	1	Cotter Pin
17	1	3/8" Flat Washer
18	1	3/8"-16 18-8ss Heavy Hex Nut



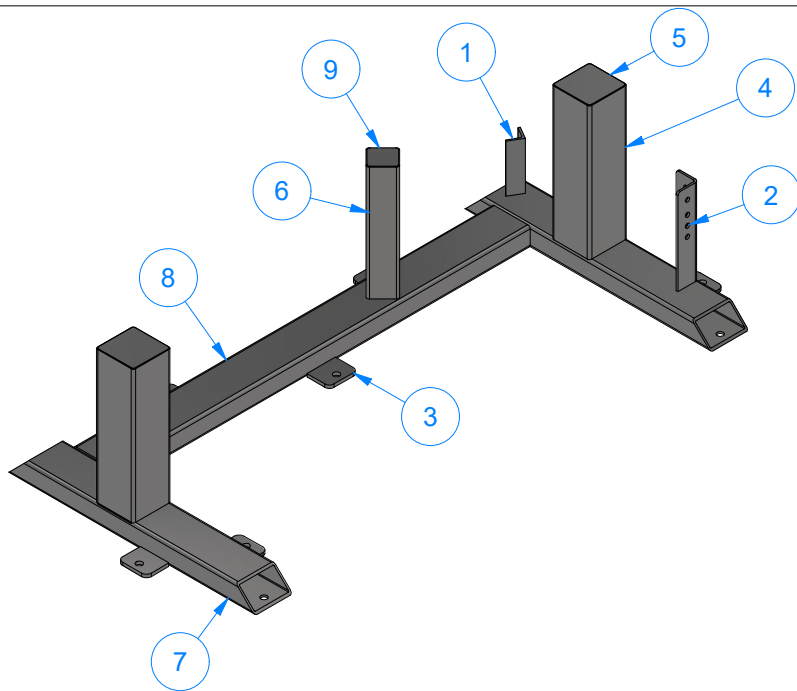
DETAIL N



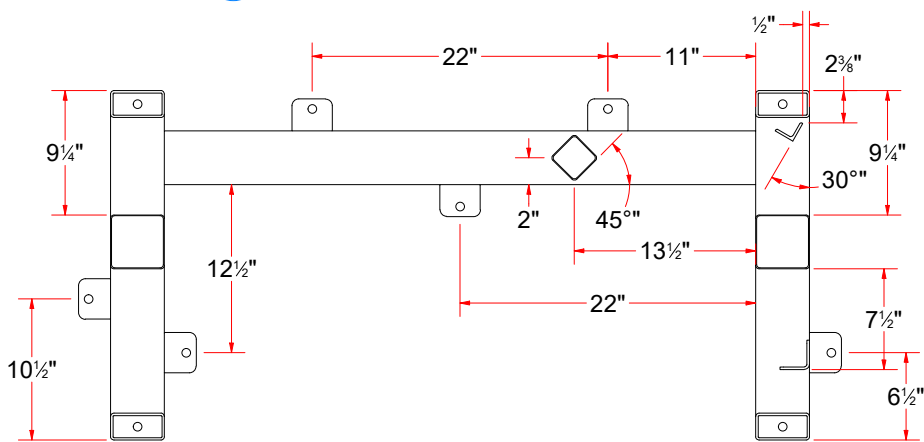
AVW EQUIPMENT CO., INC.  
105 S. 9TH AVENUE  
MAYWOOD, IL 60153  
Tel: 708-343-7738 Fax: 708-343-9065  
WWW.AVWEQUIPMENT.COM

**- COMPANY PROPRIETARY NOTE -**  
THIS DRAWING AND ITS DESIGNS ARE PROPERTY OF AVW EQUIPMENT CO. &  
IT IS NOT TO BE USED OR REPRODUCED WITHOUT THE PERMISSION FROM AVW CO.

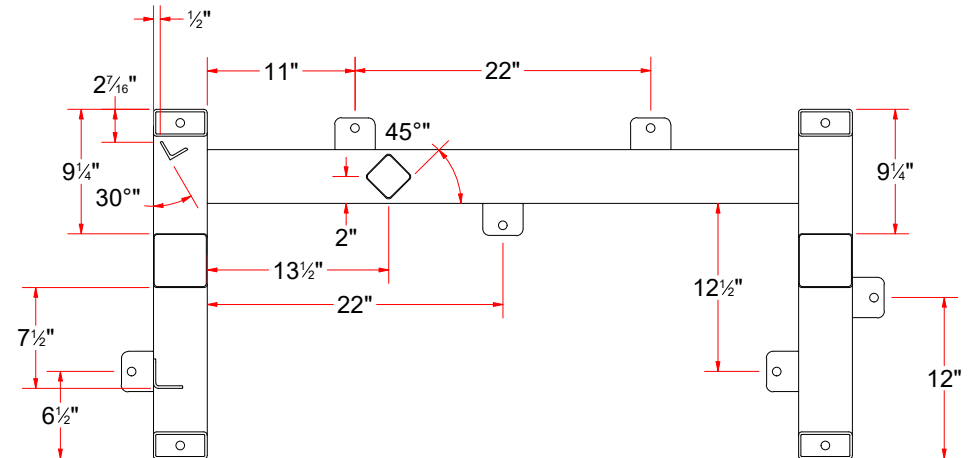
DRAWN BY	Ljubomir	CUSTOMER: AVW Equipment	
CHECKED BY		PROJECT: Tire Shine	
QTY		DESCRIPTION: Tire Dressing Frame Assembly [Passenger]	
RELEASE DATE	8/7/2021	PART NUMBER: TB3BB	REV# 1
DIMENSION ARE IN INCHES & PROVIDED PRIOR TO SURFACE TREATMENTS, UNLESS NOTED.		SIZE A	EST WEIGHT:
			SHEET 33 of 40



Parts List		
ITEM	QTY	DESCRIPTION
1	1	L-profile 1 1/2 x 1 1/2 x 3/16
2	1	Plate #3/16" x 4 1/16" x 9" LG.
3	6	Plate #5/16" x 2 3/8" x 3"
4	2	Sq. Tube [7 Ga] 4"x 14"LG.
5	2	SS Sheet Metal #18Ga xSQ3 7/8"
6	1	Sq.Tubing [7 Ga.] 2-1/2" x 12" LG
7	2	Rct.Tubing [7 Ga.] 2" x 4" x 26" LG
8	1	Rct.Tubing [7 Ga.] 2" x 4" x 44" LG
9	1	Sheet Metal #18Ga. x 2 3/8" x 2 3/8"



TB3ABA - Tire Shine Frame [Driver]



TB3BBA - Tire Shine Frame [Passenger]



AVW EQUIPMENT CO., INC.  
105 S. 9TH AVENUE  
MAYWOOD, IL 60153  
Tel: 708-343-7738 Fax: 708-343-9065  
WWW.AVWEQUIPMENT.COM

**- COMPANY PROPRIETARY NOTE -**

THIS DRAWING AND ITS DESIGNS ARE PROPERTY OF AVW EQUIPMENT CO. & IT IS NOT TO BE USED OR REPRODUCED WITHOUT THE PERMISSION FROM AVW CO.

DRAWN BY

Ljubomir

CUSTOMER: AVW Equipment

CHECKED BY

PROJECT: Tire Shine

QTY

DESCRIPTION: Tire Shine Frame [Driver]

RELEASE DATE

8/7/2021

PART NUMBER: TB3ABA

REV# 1

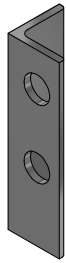
DIMENSION ARE IN INCHES & PROVIDED PRIOR TO SURFACE TREATMENTS, UNLESS NOTED.

SIZE A

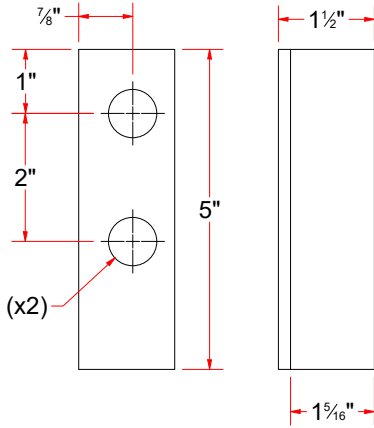
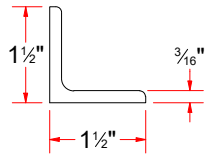
EST WEIGHT:

SHEET 34 of 40

PATH:L:\Libraries\Productivity\Tire Washer\Tire Shine Frame Assembly\Parts\TB3ABA - Tire Shine Frame [Driver].iam



L-profile 1 1/2 x 1 1/2 x 3/16



Ø 3/4" THRU (x2)

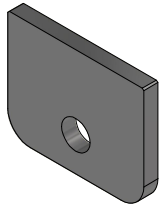
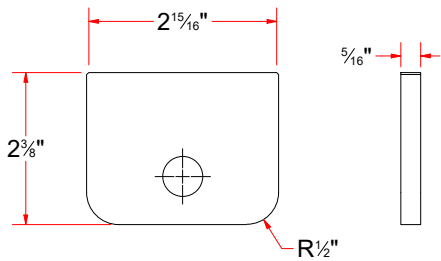


Plate #5/16" x 2 3/8" x 3"



Front

Side

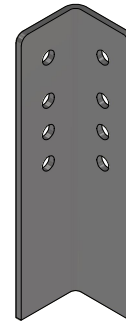
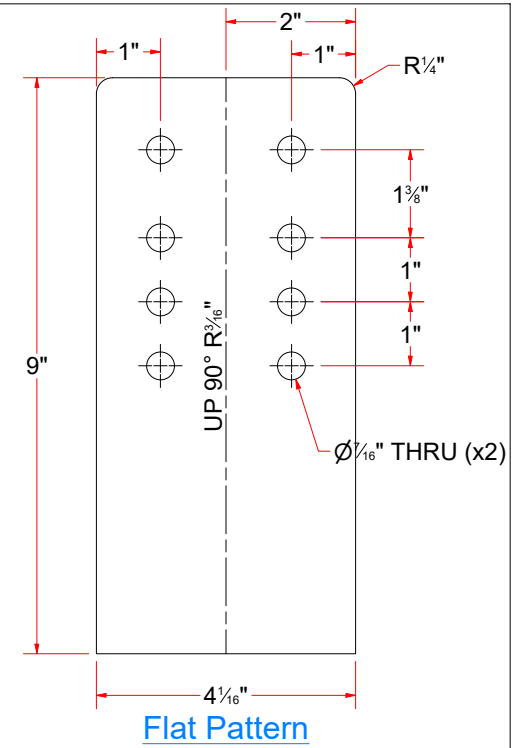
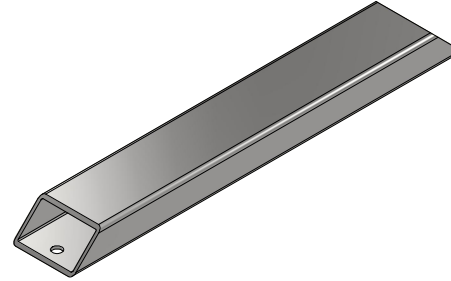


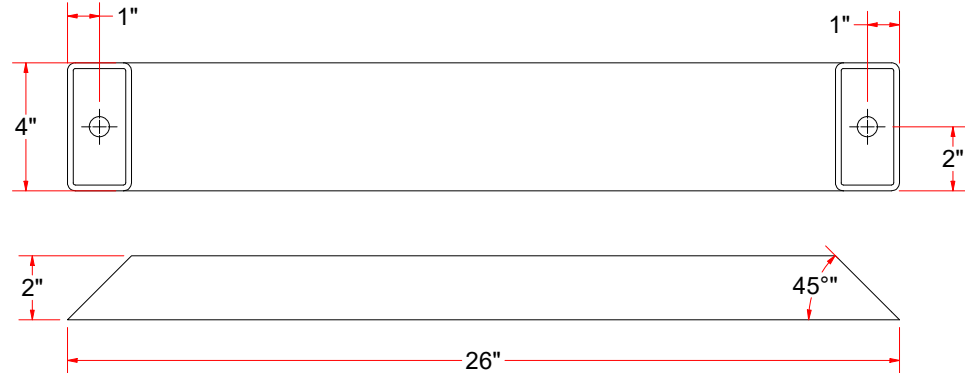
Plate #3/16" x 4 1/16" x 9" LG.



Flat Pattern



Rct.Tubing [7 Ga.] 2" x 4" x 26" LG



AVW EQUIPMENT CO., INC.  
105 S. 9TH AVENUE  
MAYWOOD, IL 60153  
Tel: 708-343-7738 Fax: 708-343-9065  
WWW.AVWEQUIPMENT.COM

**- COMPANY PROPRIETARY NOTE -**

THIS DRAWING AND ITS DESIGNS ARE PROPERTY OF AVW EQUIPMENT CO. & IT IS NOT TO BE USED OR REPRODUCED WITHOUT THE PERMISSION FROM AVW CO.

DRAWN BY

Ljubomir

CUSTOMER: AVW Equipment

CHECKED BY

PROJECT: Tire Shine

QTY

DESCRIPTION: L-profile 1 1/2 x 1 1/2 x 3/16

RELEASE DATE

8/7/2021

PART NUMBER: TB3ABAC

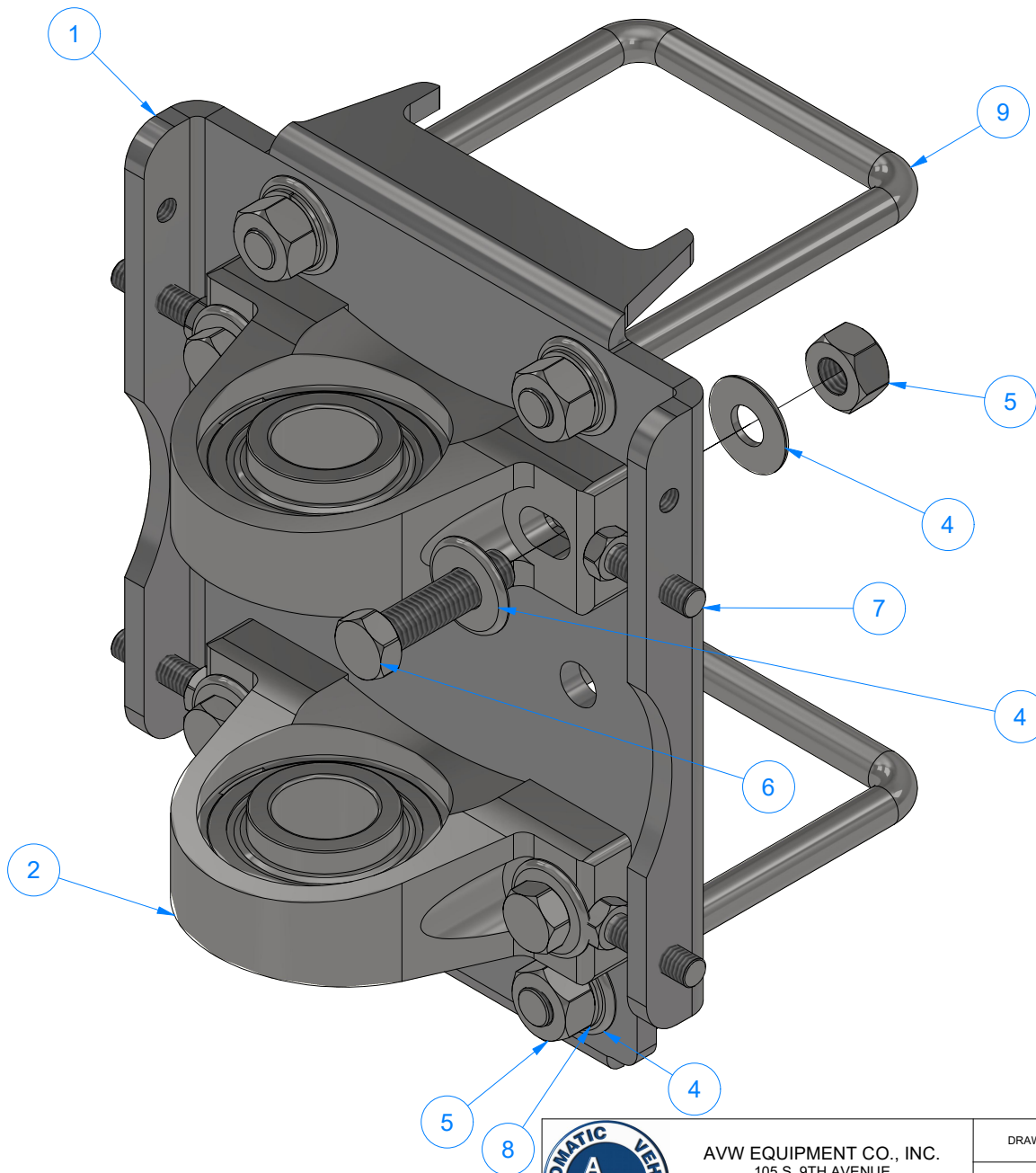
REV# 1

DIMENSION ARE IN INCHES & PROVIDED PRIOR TO SURFACE TREATMENTS, UNLESS NOTED.

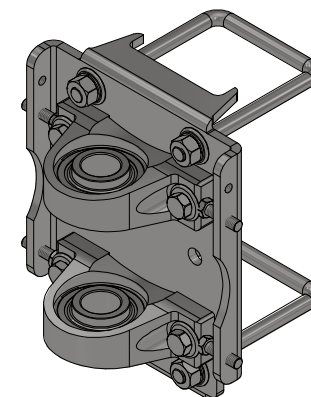
SIZE A

EST WEIGHT:

SHEET 35 of 40



Parts List		
ITEM	QTY	DESCRIPTION
1	1	Empty Rocker Arm Mount Plate 13 9/16 x 10
2	2	1-1/4" Pillow Block
4	12	1/2" Flat Washer
5	8	1/2-13 Hex Nut
6	4	1/2"-13 x 2" L Hex Screw
7	4	3/8" - 16 x 1 1/4" UNC Hex Screw
8	4	1/2" Split Lock Washer
9	2	Square U Bolt D 1/2" x 4" x 7 1/2" LG



**TB3ABD - Arm Mount Plate Assembly**



AVW EQUIPMENT CO., INC.  
105 S. 9TH AVENUE  
MAYWOOD, IL 60153  
Tel: 708-343-7738 Fax: 708-343-9065  
WWW.AVWEQUIPMENT.COM

**- COMPANY PROPRIETARY NOTE -**

THIS DRAWING AND ITS DESIGNS ARE PROPERTY OF AVW EQUIPMENT CO. & IT IS NOT TO BE USED OR REPRODUCED WITHOUT THE PERMISSION FROM AVW CO.

DRAWN BY

Ljubomir

CUSTOMER: AVW Equipment

CHECKED BY

PROJECT: Tire Shine

QTY

DESCRIPTION: Arm Mount Plate Assembly

RELEASE DATE

8/7/2021

PART NUMBER: TB3ABD

REV# 1

DIMENSION ARE IN INCHES & PROVIDED PRIOR TO SURFACE TREATMENTS, UNLESS NOTED.

SIZE  
**A**

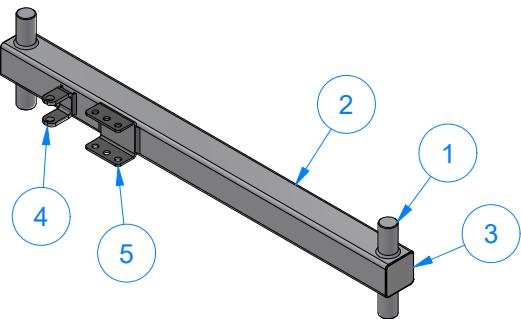
EST WEIGHT:

SHEET 36 of 40

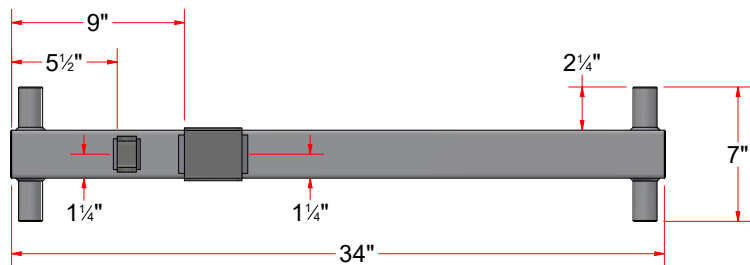
PATH: L:\Libraries\Productivity\Tire Washer\Tire Shine Frame Assembly\Parts\TB3ABD - Tire Shine Arm Mount Assembly.iam



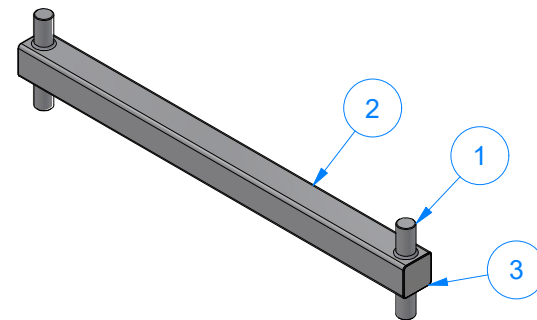
Parts List		
ITEM	QTY	DESCRIPTION
1	2	Round Bar 1 1/4" O.D. x 7" LG.
2	1	Sq. Tube 2-1/2" x 34"LG
3	2	Sheet Metal #18Ga. x 2 3/8" x 2 3/8"
4	1	Mount, for air cylinder
5	1	Shock Absorber Bracket



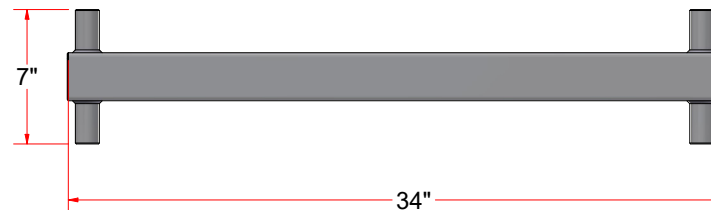
Long Tire Shine Arm-W/ Brackets



Parts List		
ITEM	QTY	DESCRIPTION
1	2	Round Bar 1 1/4" O.D. x 7" LG.
2	1	Sq. Tube 2-1/2" x 34"LG
3	2	Sheet Metal #18Ga. x 2 3/8" x 2 3/8"



34" Empty Tire Shine Arm



AVW EQUIPMENT CO., INC.  
105 S. 9TH AVENUE  
MAYWOOD, IL 60153  
Tel: 708-343-7738 Fax: 708-343-9065  
WWW.AVWEQUIPMENT.COM

**- COMPANY PROPRIETARY NOTE -**

THIS DRAWING AND ITS DESIGNS ARE PROPERTY OF AVW EQUIPMENT CO. & IT IS NOT TO BE USED OR REPRODUCED WITHOUT THE PERMISSION FROM AVW CO.

DRAWN BY

Ljubomir

CUSTOMER: AVW Equipment

CHECKED BY

PROJECT: Tire Shine

QTY

DESCRIPTION: Long Tire Shine Arm-W/ Brackets

RELEASE DATE

8/7/2021

PART NUMBER: TB3ABB

REV# 1

DIMENSION ARE IN INCHES & PROVIDED PRIOR TO SURFACE TREATMENTS, UNLESS NOTED.

SIZE  
**A**

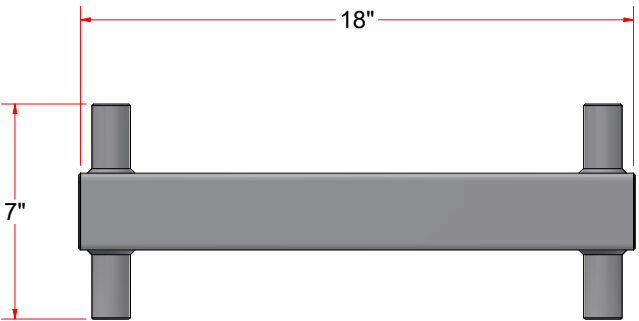
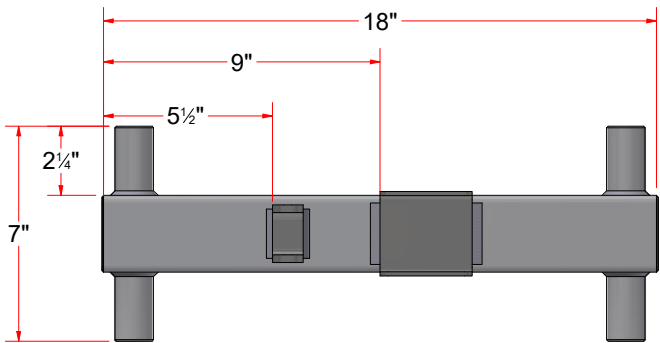
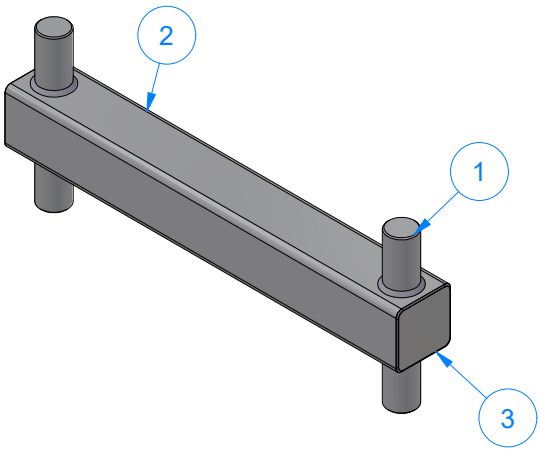
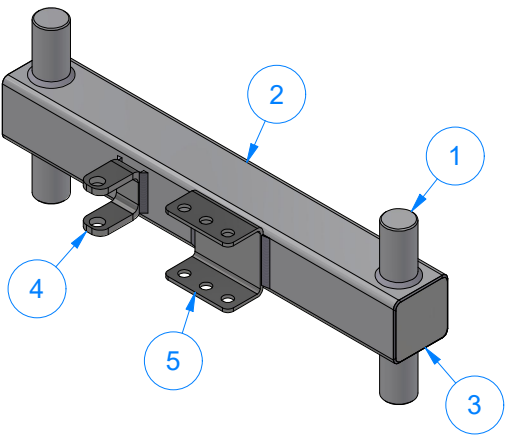
EST WEIGHT:

SHEET 37 of 40

PATH:L:\Libraries\Productivity\Tire Washer\Tire Shine Frame Assembly\Parts\TB3ABB - Long Tire Shine Arm [WITH BRACKETS].iam

Parts List		
ITEM	QTY	DESCRIPTION
1	2	Round Bar 1 1/4" O.D. x 7" LG.
2	1	Sq. Tube 2-1/2" x 18"LG
3	2	Sheet Metal #18Ga. x 2 3/8" x 2 3/8"
4	1	Mount, for air cylinder
5	1	Shock Absorber Bracket

Parts List		
ITEM	QTY	DESCRIPTION
1	2	Round Bar 1 1/4" O.D. x 7" LG.
2	1	Sq. Tube 2-1/2" x 18"LG
3	2	Sheet Metal #18Ga. x 2 3/8" x 2 3/8"

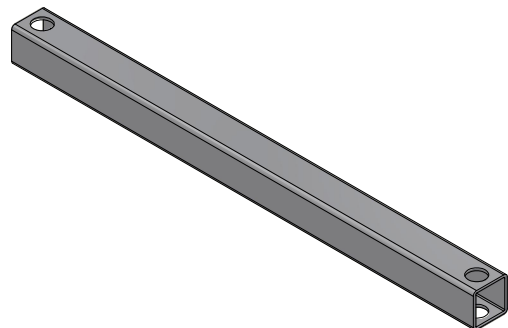


AVW EQUIPMENT CO., INC.  
105 S. 9TH AVENUE  
MAYWOOD, IL 60153  
Tel: 708-343-7738 Fax: 708-343-9065  
WWW.AVWEQUIPMENT.COM

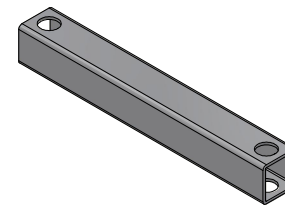
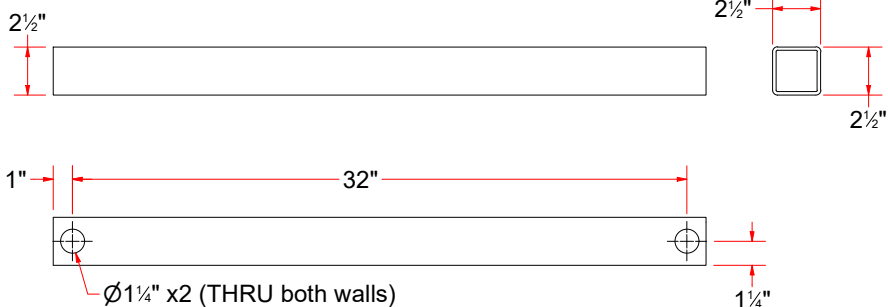
**- COMPANY PROPRIETARY NOTE -**  
THIS DRAWING AND ITS DESIGNS ARE PROPERTY OF AVW EQUIPMENT CO. &  
IT IS NOT TO BE USED OR REPRODUCED WITHOUT THE PERMISSION FROM AVW CO.

DRAWN BY	Ljubomir	CUSTOMER: AVW Equipment	
CHECKED BY		PROJECT: Tire Shine	
QTY		DESCRIPTION: 18" Tire Shine Arm-W/ Brackets	
RELEASE DATE	8/7/2021	PART NUMBER: TB2ABB	REV# 1
DIMENSION ARE IN INCHES & PROVIDED PRIOR TO SURFACE TREATMENTS, UNLESS NOTED.		SIZE A	EST WEIGHT:
			SHEET 38 of 40

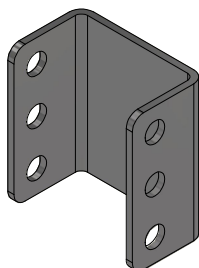
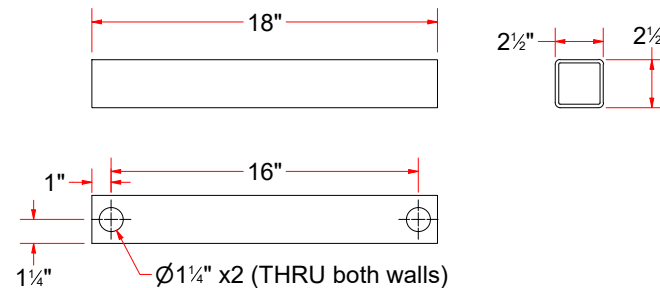
PATH:L:\Libraries\Productivity\Tire Washer\Tire Shine Frame Assembly\Parts\TB2ABB - 18in Tire Shine Arm [WITH BRACKETS].iam



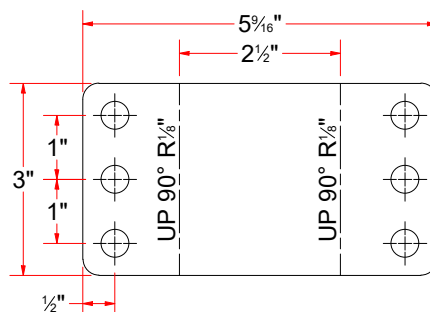
Sq. Tube 2-1/2" x 34"LG



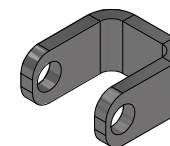
Sq. Tube 2-1/2" x 18"LG



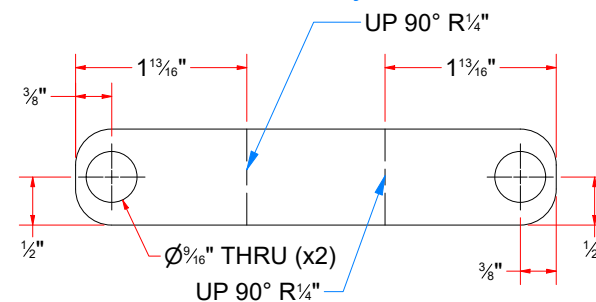
Shock Absorber Bracket



Flat Pattern



Mount, for air cylinder



Flat Pattern



AVW EQUIPMENT CO., INC.  
105 S. 9TH AVENUE  
MAYWOOD, IL 60153  
Tel: 708-343-7738 Fax: 708-343-9065  
WWW.AVWEQUIPMENT.COM

- COMPANY PROPRIETARY NOTE -

THIS DRAWING AND ITS DESIGNS ARE PROPERTY OF AVW EQUIPMENT CO. & IT IS NOT TO BE USED OR REPRODUCED WITHOUT THE PERMISSION FROM AVW CO.

DRAWN BY

Ljubomir

CUSTOMER: AVW Equipment

CHECKED BY

PROJECT: Tire Shine

QTY

DESCRIPTION: Sq. Tube 2-1/2" x 34"LG

RELEASE DATE

8/7/2021

PART NUMBER: TB3ABBA

REV# 1

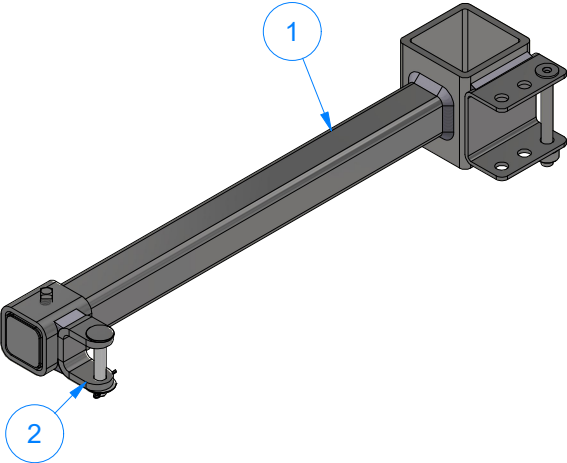
DIMENSION ARE IN INCHES & PROVIDED PRIOR TO SURFACE TREATMENTS, UNLESS NOTED.

SIZE A

EST WEIGHT:

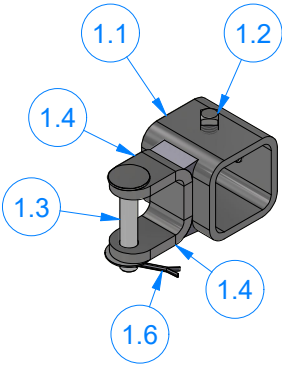
SHEET 39 of 40

TB3ABE - Shock Absorber Mounting Bracket Assembly



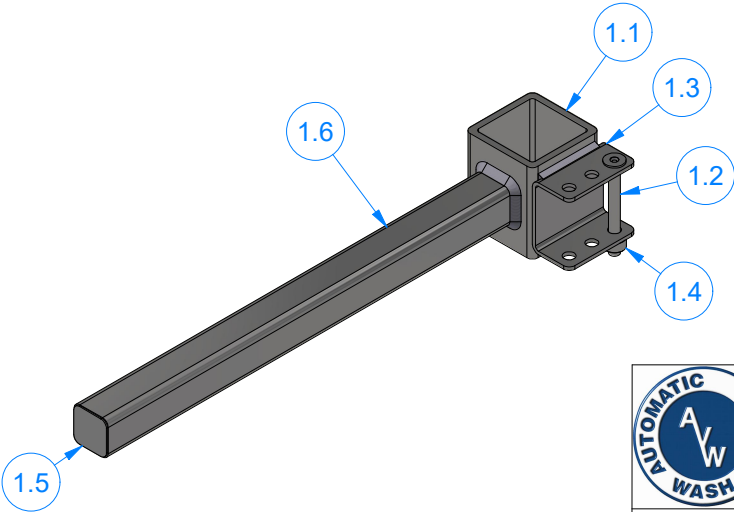
Parts List		
ITEM	QTY	DESCRIPTION
1	1	Shock Absorber Mounting Bracket Arm
2	1	Moveable Rear Shock Mount

Moveable Rear Shock Mount



Parts List		
ITEM	QTY	DESCRIPTION
1.1	1	Sq. Tube #7 Ga x 2"
1.2	2	3/8" - 20 x 0.5" UNC Square Screw
1.3	1	Pin 3/8" x 2 1/4" L
1.4	1	Clevis Bracket #1/4" x 2"
1.5	1	3/8" Flat Washer
1.6	1	Cotter Pin

Shock Absorber Mounting Bracket Arm



Parts List		
ITEM	QTY	DESCRIPTION
1.1	1	Sq. Tube 3" x #1/4" Wall x 3 1/2" LG
1.2	1	Pin 3/8" x 3 1/2" LG
1.3	1	Shock Absorber Bracket
1.4	1	3/8" Set Screw Collar
1.5	1	SS Sheet Metal #18Ga (0.0478 in) x 1 7/16" x 1 7/16"
1.6	1	Sq. Tubing #7 Gauge (0.180 in) x 1 1/2" x 18" LG.



AVW EQUIPMENT CO., INC.  
105 S. 9TH AVENUE  
MAYWOOD, IL 60153  
Tel: 708-343-7738 Fax: 708-343-9065  
WWW.AVWEQUIPMENT.COM

- COMPANY PROPRIETARY NOTE -  
THIS DRAWING AND ITS DESIGNS ARE PROPERTY OF AVW EQUIPMENT CO. &  
IT IS NOT TO BE USED OR REPRODUCED WITHOUT THE PERMISSION FROM AVW CO.

DRAWN BY	Ljubomir	CUSTOMER: AVW Equipment	
CHECKED BY		PROJECT: Tire Shine	
QTY		DESCRIPTION: Shock Absorber Mounting Bracket Assembly	
RELEASE DATE	8/7/2021	PART NUMBER: TB3ABE	REV# 1
DIMENSION ARE IN INCHES & PROVIDED PRIOR TO SURFACE TREATMENTS, UNLESS NOTED.		SIZE A	EST WEIGHT:
			SHEET 40 of 40