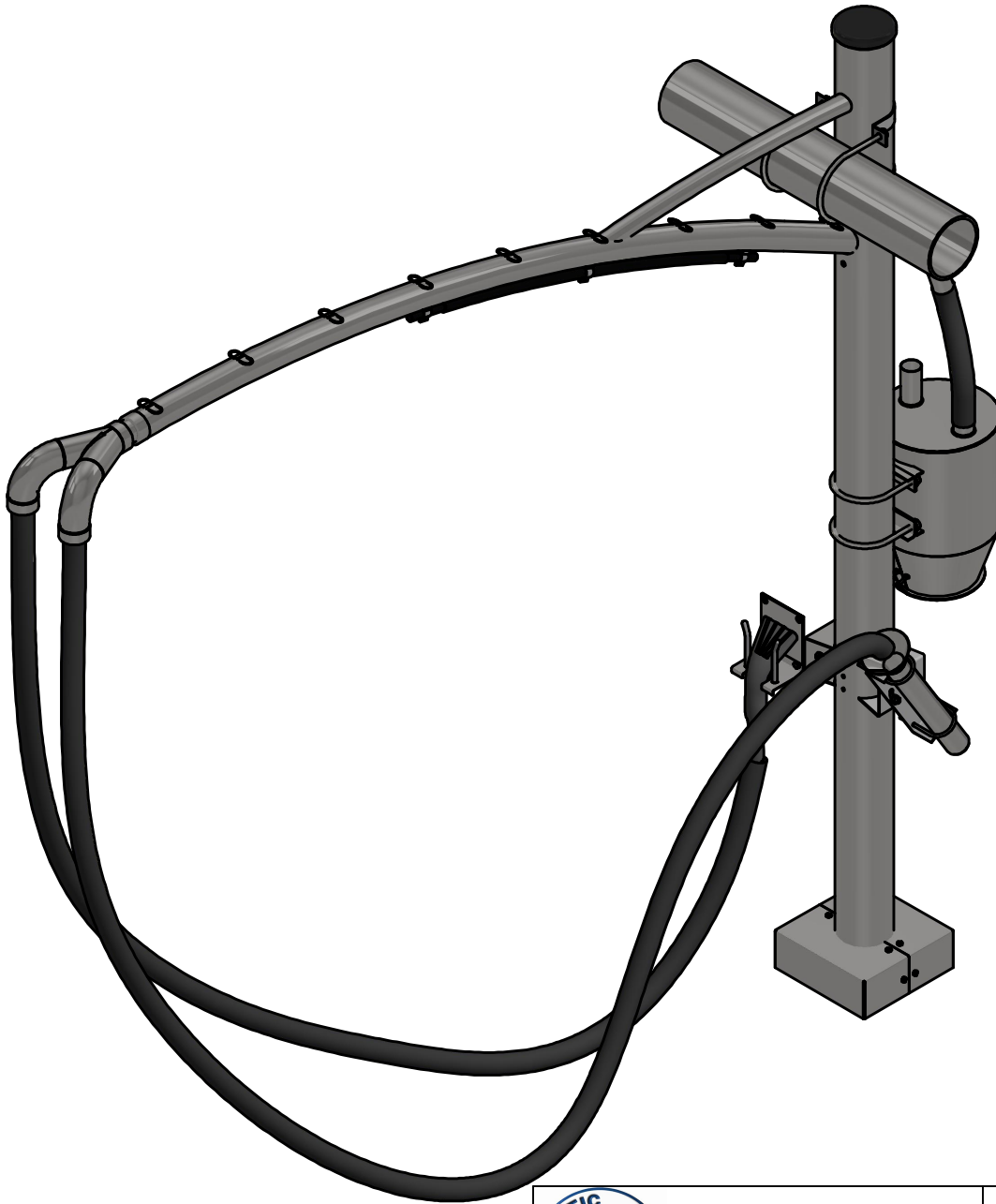


# VA5129A-2 AVW Vacuum (Double)



AVW EQUIPMENT CO., INC.  
105 S. 9TH AVENUE  
MAYWOOD, IL 60153  
Tel: 708-343-7738 Fax: 708-343-9065  
WWW.AVWEQUIPMENT.COM

## - COMPANY PROPRIETARY NOTE -

THIS DRAWING AND ITS DESIGNS ARE PROPERTY OF AVW EQUIPMENT CO. & IT IS NOT TO BE USED OR REPRODUCED WITHOUT THE PERMISSION FROM AVW CO.

DRAWN BY

Ljubomir

CUSTOMER:

CHECKED BY

PROJECT:

QTY

DESCRIPTION: AVW Standard Vacuum Arch (108 in. Post)

RELEASE DATE

1/11/2021

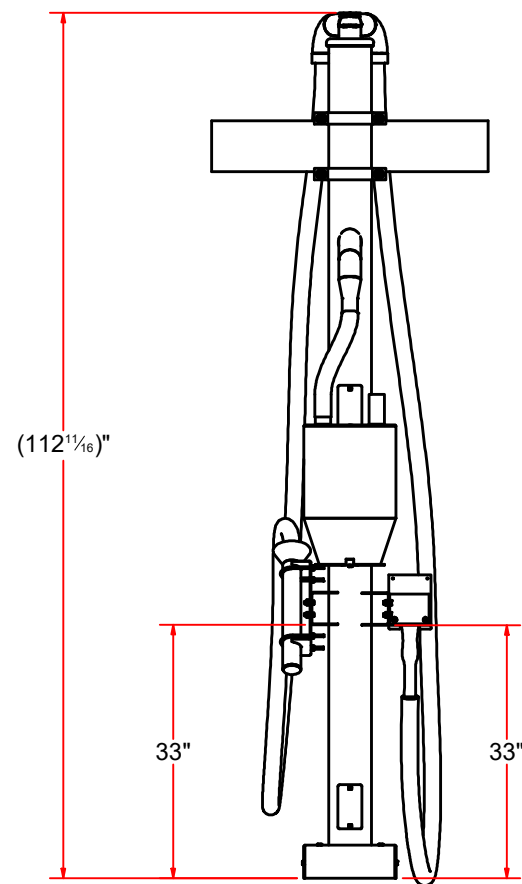
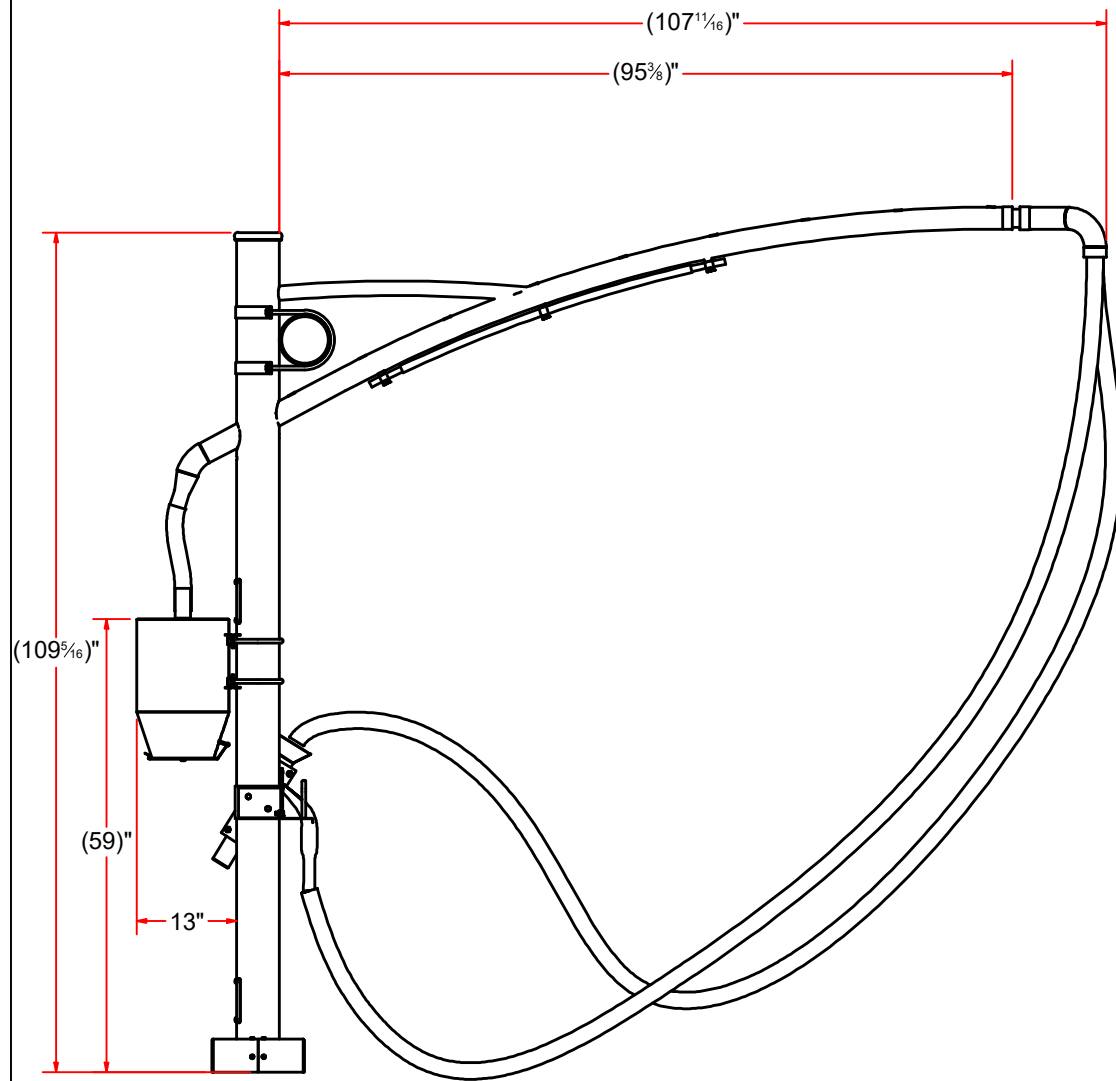
PART NUMBER: AVW Standard Vacuum Arch (108 in. Post) REV# 001

DIMENSION ARE IN INCHES & PROVIDED PRIOR TO SURFACE TREATMENTS, UNLESS NOTED.

SIZE  
A

EST WEIGHT:

SHEET 1 of 29



AVW EQUIPMENT CO., INC.  
105 S. 9TH AVENUE  
MAYWOOD, IL 60153  
Tel: 708-343-7738 Fax: 708-343-9065  
WWW.AVWEQUIPMENT.COM

**- COMPANY PROPRIETARY NOTE -**

THIS DRAWING AND ITS DESIGNS ARE PROPERTY OF AVW EQUIPMENT CO. &  
IT IS NOT TO BE USED OR REPRODUCED WITHOUT THE PERMISSION FROM AVW CO.

DRAWN BY

Ljubomir

CUSTOMER:

CHECKED BY

PROJECT:

QTY

DESCRIPTION: AVW Standard Vacuum Arch (108 in. Post)

RELEASE  
DATE

1/11/2021

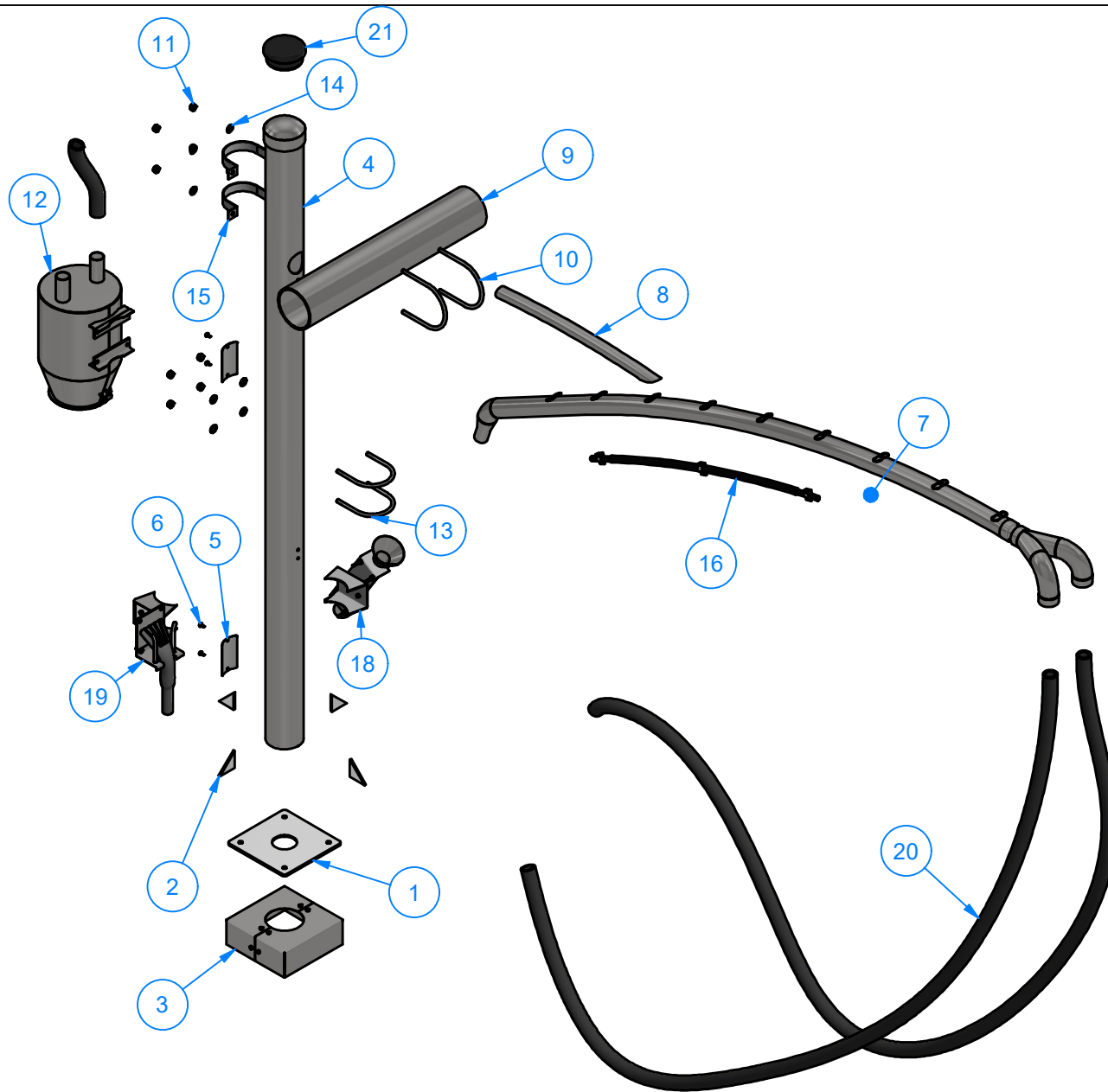
PART NUMBER: AVW Standard Vacuum Arch (108 in. Post) REV# 001

DIMENSION ARE IN INCHES & PROVIDED PRIOR  
TO SURFACE TREATMENTS, UNLESS NOTED.

SIZE  
**A**

EST WEIGHT:

SHEET 2 of 29



Parts List		
ITEM	QTY	DESCRIPTION
1	1	Plate #5/16" x 11 3/4" x 11 3/4"
2	4	Gusset #5/16" x 3" x 3"
3	1	Base Plate Cover Assembly
4	1	Vacuum Arch Post - 5 in Pipe x Sch10 x 108 LG knock-outs removed
5	2	Sheet Metal #14Ga. 5 3/4"x 3 1/4"
6	4	1/4" - 20 x 0.5" UNC Square Screw
7	1	Vacuum Canopy Top Pipe Assembly
8	1	Pipe - 1 1/2 x Sch10 x 33" LG.
9	1	Sch40, 6in Pipe Size. Length depends on the number of vacuums at a certain location.
10	2	Round U-Bolts
11	8	1/2"-13 Stainless Steel Hex Nut
12	1	Vacuum Separator - Plain hose connections - U-bolt type
13	2	Round U Bolt D 1/2" x 5 5/8" x 6 1/2" LG
14	8	1/2" R Flat Washer
15	2	Vacuum Pipe Clamp
16	1	Light Bar w mounting brackets
18	1	Claw Holder (Stainless Steel) - D
19	1	Vacuum Nozzle Holder Assembly
20	1	2in ID Flexilbe Hose
21	1	R-VA2476C1 - UHMW Cap



AVW EQUIPMENT CO., INC.  
105 S. 9TH AVENUE  
MAYWOOD, IL 60153  
Tel: 708-343-7738 Fax: 708-343-9065  
WWW.AVWEQUIPMENT.COM

**- COMPANY PROPRIETARY NOTE -**

THIS DRAWING AND ITS DESIGNS ARE PROPERTY OF AVW EQUIPMENT CO. & IT IS NOT TO BE USED OR REPRODUCED WITHOUT THE PERMISSION FROM AVW CO.

DRAWN BY

Ljubomir

CUSTOMER:

CHECKED BY

PROJECT:

QTY

DESCRIPTION: AVW Standard Vacuum Arch (108 in. Post)

RELEASE DATE

1/11/2021

PART NUMBER: AVW Standard Vacuum Arch (108 in. Post) REV# 001

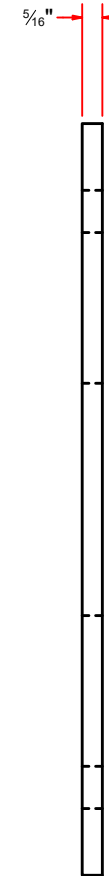
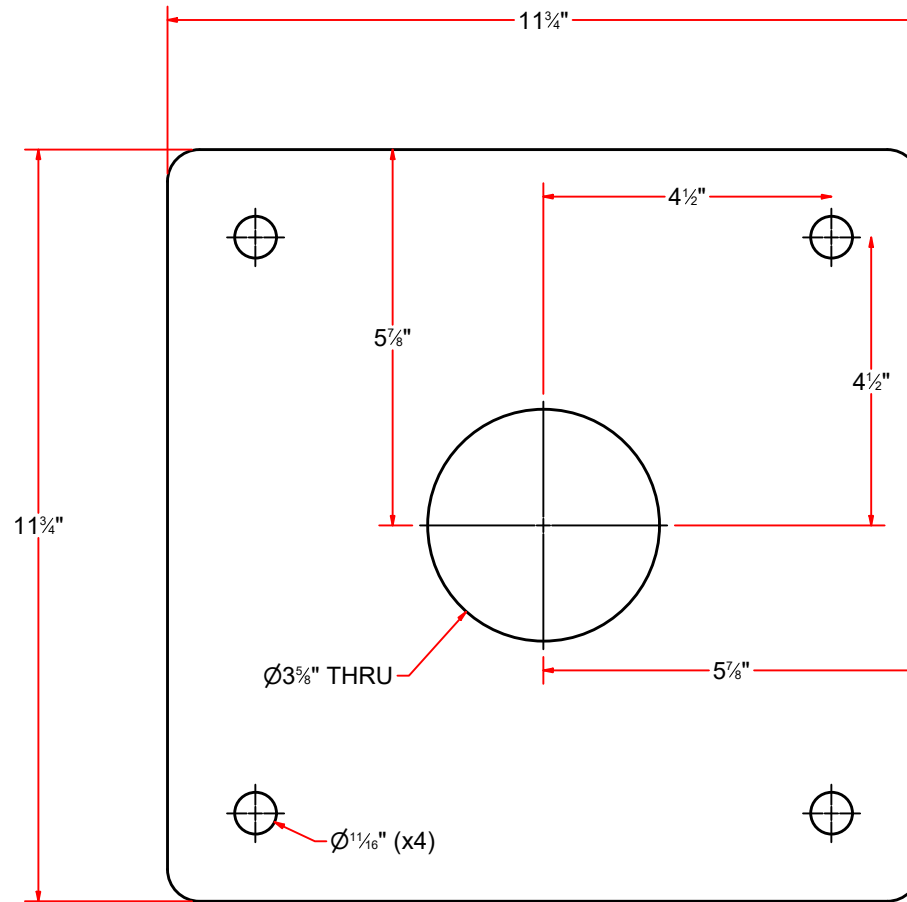
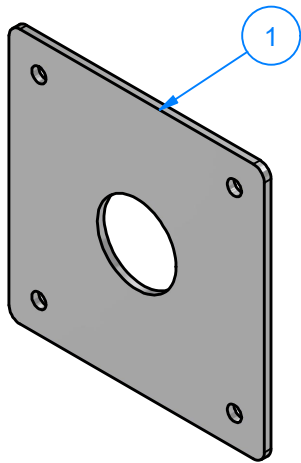
DIMENSION ARE IN INCHES & PROVIDED PRIOR TO SURFACE TREATMENTS, UNLESS NOTED.

SIZE  
**A**

EST WEIGHT:

SHEET 3 of 29

PATH:L:\Designs\Product Lines\Vacuum Arches\AVW Standard Vacuum Arches (VA5129A)\Vacuum Arch (108 in. Post)\VA5129A-2 AVW Standard Vacuum Arch (108 in. Post) (Double).iam



AVW EQUIPMENT CO., INC.  
105 S. 9TH AVENUE  
MAYWOOD, IL 60153  
Tel: 708-343-7738 Fax: 708-343-9065  
WWW.AVWEQUIPMENT.COM

**- COMPANY PROPRIETARY NOTE -**

THIS DRAWING AND ITS DESIGNS ARE PROPERTY OF AVW EQUIPMENT CO. & IT IS NOT TO BE USED OR REPRODUCED WITHOUT THE PERMISSION FROM AVW CO.

DRAWN BY

Ljubomir

CUSTOMER:

CHECKED BY

PROJECT:

QTY

DESCRIPTION: Plate #5/16" x 11 3/4" x 11 3/4"

RELEASE DATE

1/11/2021

PART NUMBER: Vacuum Post Base Plate #5\_16 x 11-3\_4 x 11-3\_4 REV#001

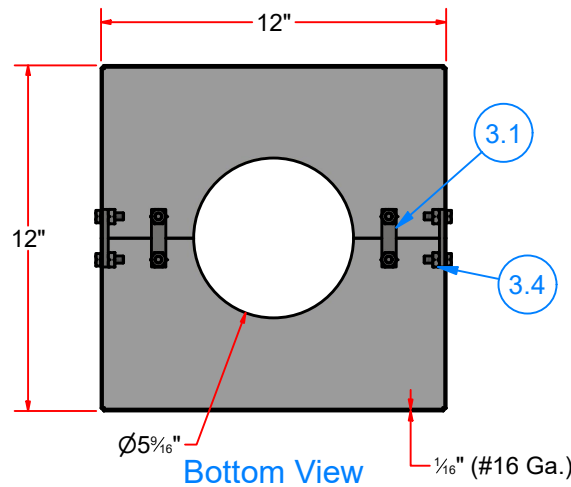
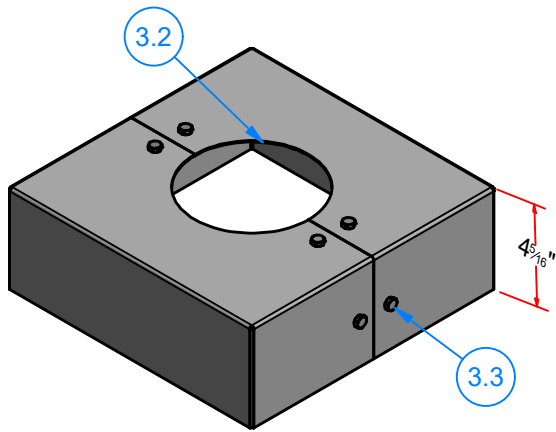
DIMENSION ARE IN INCHES & PROVIDED PRIOR TO SURFACE TREATMENTS, UNLESS NOTED.

SIZE  
**A**

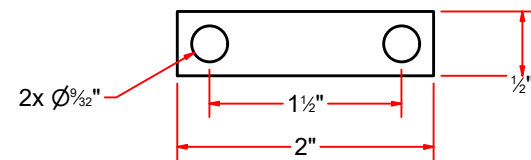
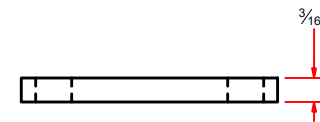
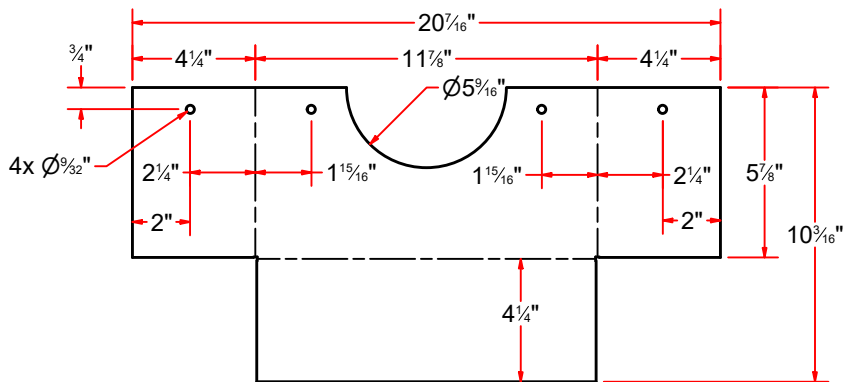
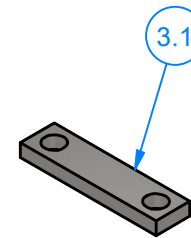
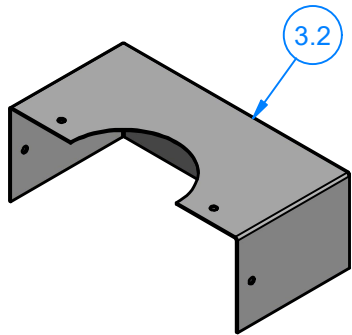
EST WEIGHT:

SHEET 4 of 29

PATH:L:\Designs\Product Lines\Vacuum Arches\AVW Standard Vacuum Arches (VA5129A)\Vacuum Arch (108 in. Post)\Parts\Vacuum Post Base Plate #5\_16 x 11-3\_4 x 11-3\_4.ipt



Parts List		
ITEM	QTY	DESCRIPTION
3.1	4	Plate #3/16" x 1/2" x 2" LG.
3.2	2	Sheet Metal #16Ga x 20 7/16" x 10 3/16"
3.3	8	1/4" - 20 x 0.75" UNC Hex Screw
3.4	8	1/4"-20 18-8ss Heavy Hex Nut



Flat Pattern



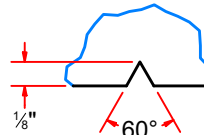
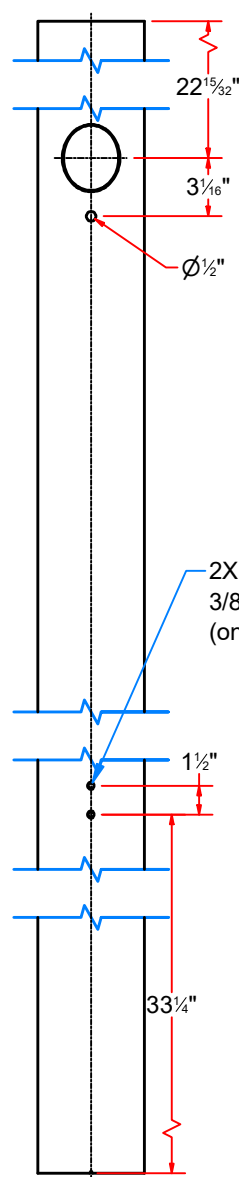
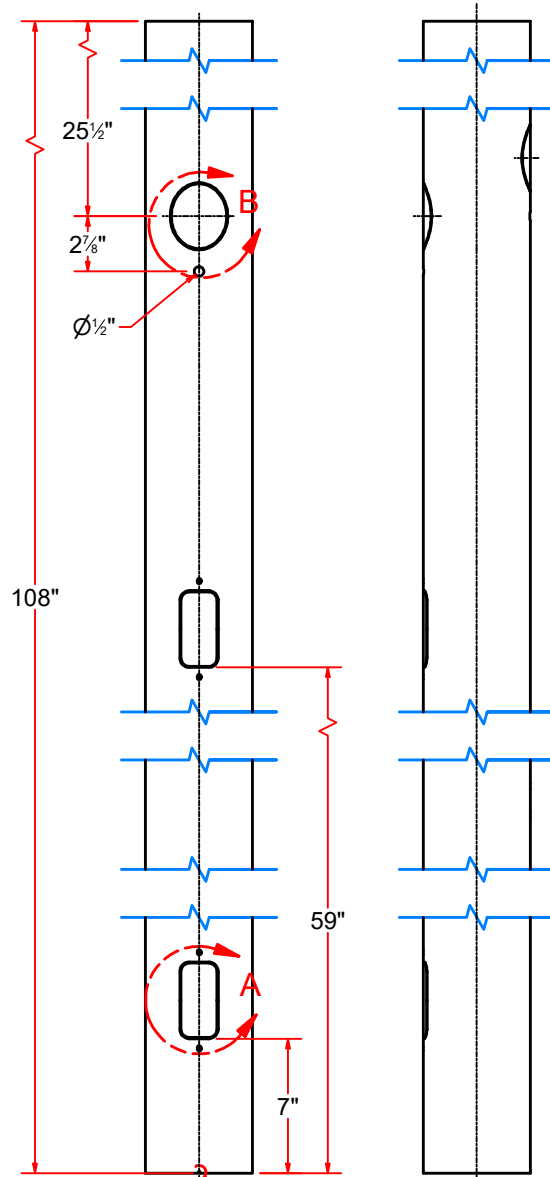
AVW EQUIPMENT CO., INC.  
105 S. 9TH AVENUE  
MAYWOOD, IL 60153  
Tel: 708-343-7738 Fax: 708-343-9065  
WWW.AVWEQUIPMENT.COM

**- COMPANY PROPRIETARY NOTE -**  
THIS DRAWING AND ITS DESIGNS ARE PROPERTY OF AVW EQUIPMENT CO. & IT IS NOT TO BE USED OR REPRODUCED WITHOUT THE PERMISSION FROM AVW CO.

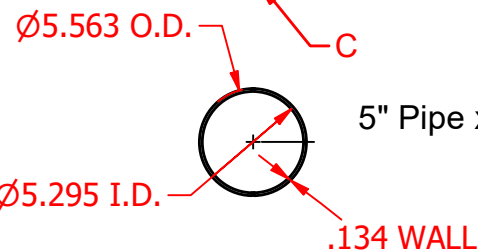
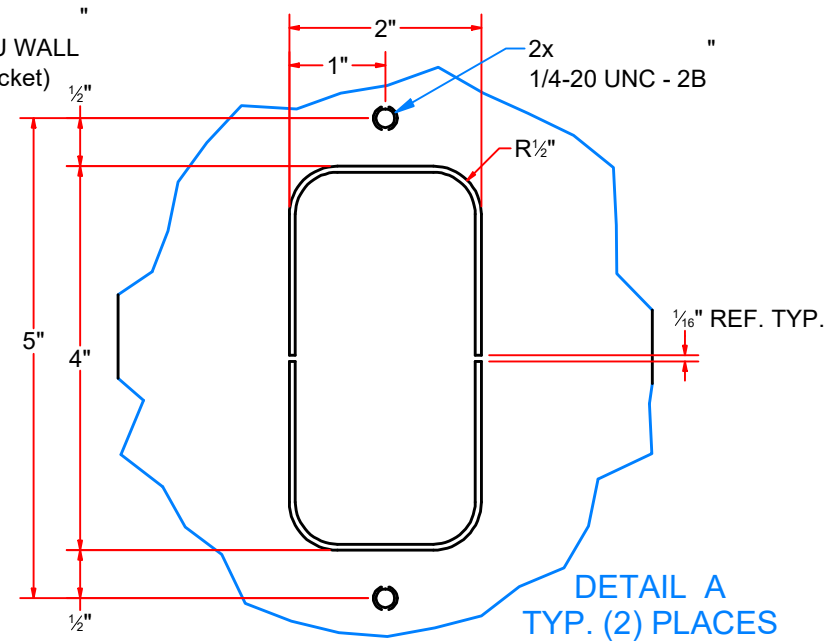
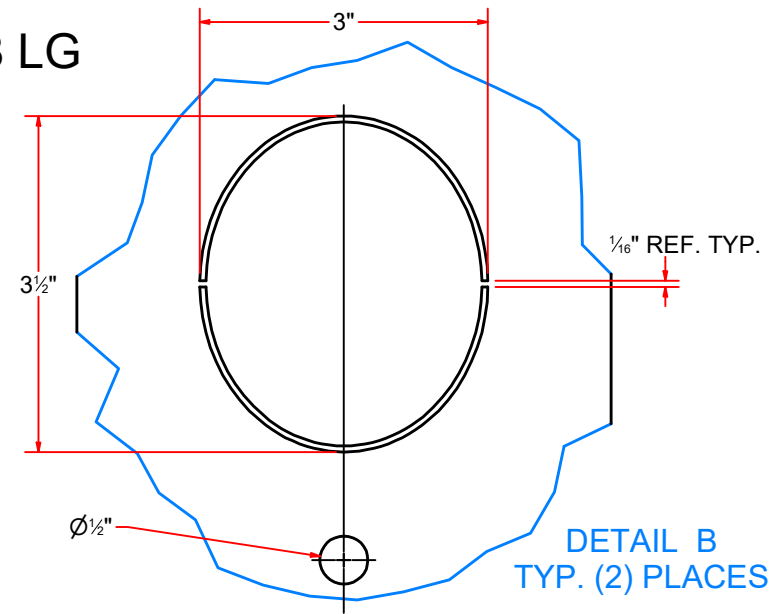
DRAWN BY	Ljubomir	CUSTOMER:	
CHECKED BY		PROJECT:	
QTY		DESCRIPTION: Base Plate Cover Assembly	
RELEASE DATE	1/11/2021	PART NUMBER: Base Plate Cover Assembly	REV# 001
DIMENSION ARE IN INCHES & PROVIDED PRIOR TO SURFACE TREATMENTS, UNLESS NOTED.		SIZE A	EST WEIGHT:
			SHEET 5 of 29

PATH:L:\Designs\Product Lines\Vacuum Arches\AVW Standard Vacuum Arches (VA5129A)\Vacuum Arch (108 in. Post)\Parts\Base Plate Cover Assembly.iam

# Vacuum Arch Post - 5 in. Pipe x Sch10 x 108 LG



2X  
3/8-16 UNC - 2B THRU WALL  
(only for hose claw bracket)



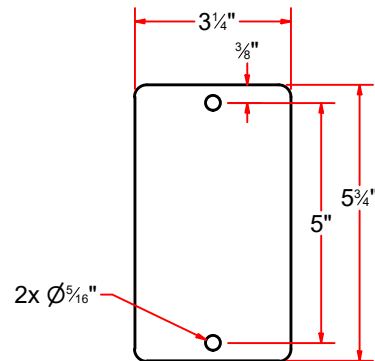
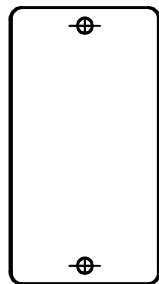
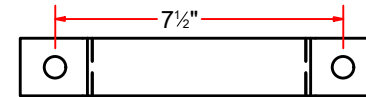
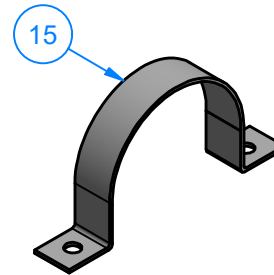
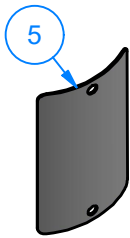
AVW EQUIPMENT CO., INC.  
105 S. 9TH AVENUE  
MAYWOOD, IL 60153  
Tel: 708-343-7738 Fax: 708-343-9065  
WWW.AVWEQUIPMENT.COM

## - COMPANY PROPRIETARY NOTE -

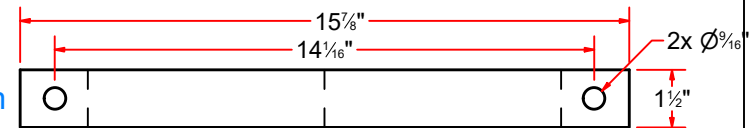
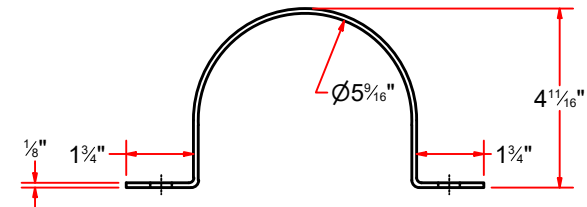
THIS DRAWING AND ITS DESIGNS ARE PROPERTY OF AVW EQUIPMENT CO. & IT IS NOT TO BE USED OR REPRODUCED WITHOUT THE PERMISSION FROM AVW CO.

DRAWN BY	Ljubomir	CUSTOMER:
CHECKED BY		PROJECT:
QTY		DESCRIPTION: Vacuum Arch Post - 5 in Pipe x Sch10 x 108 LG
RELEASE DATE	1/11/2021	PART NUMBER: Vacuum Arch Post - 5 in Pipe x Sch10 x 108 LG # 001
DIMENSION ARE IN INCHES & PROVIDED PRIOR TO SURFACE TREATMENTS, UNLESS NOTED.		SIZE A EST WEIGHT: SHEET 6 of 29

PATH:L:\Designs\Product Lines\Vacuum Arches\AVW Standard Vacuum Arches (VA5129A)\Vacuum Arch (108 in. Post)\Parts\Vacuum Arch Post - 5 in Pipe x Sch10 x 108 LG.ipt



Flat Pattern



Flat Pattern



AVW EQUIPMENT CO., INC.  
105 S. 9TH AVENUE  
MAYWOOD, IL 60153  
Tel: 708-343-7738 Fax: 708-343-9065  
WWW.AVWEQUIPMENT.COM

**- COMPANY PROPRIETARY NOTE -**

THIS DRAWING AND ITS DESIGNS ARE PROPERTY OF AVW EQUIPMENT CO. & IT IS NOT TO BE USED OR REPRODUCED WITHOUT THE PERMISSION FROM AVW CO.

DRAWN BY

Ljubomir

CUSTOMER:

CHECKED BY

PROJECT:

QTY

DESCRIPTION: Sheet Metal #14Ga. 5 3/4"x 3 1/4"

RELEASE DATE

1/11/2021

PART NUMBER: Access Plate

REV# 001

DIMENSION ARE IN INCHES & PROVIDED PRIOR TO SURFACE TREATMENTS, UNLESS NOTED.

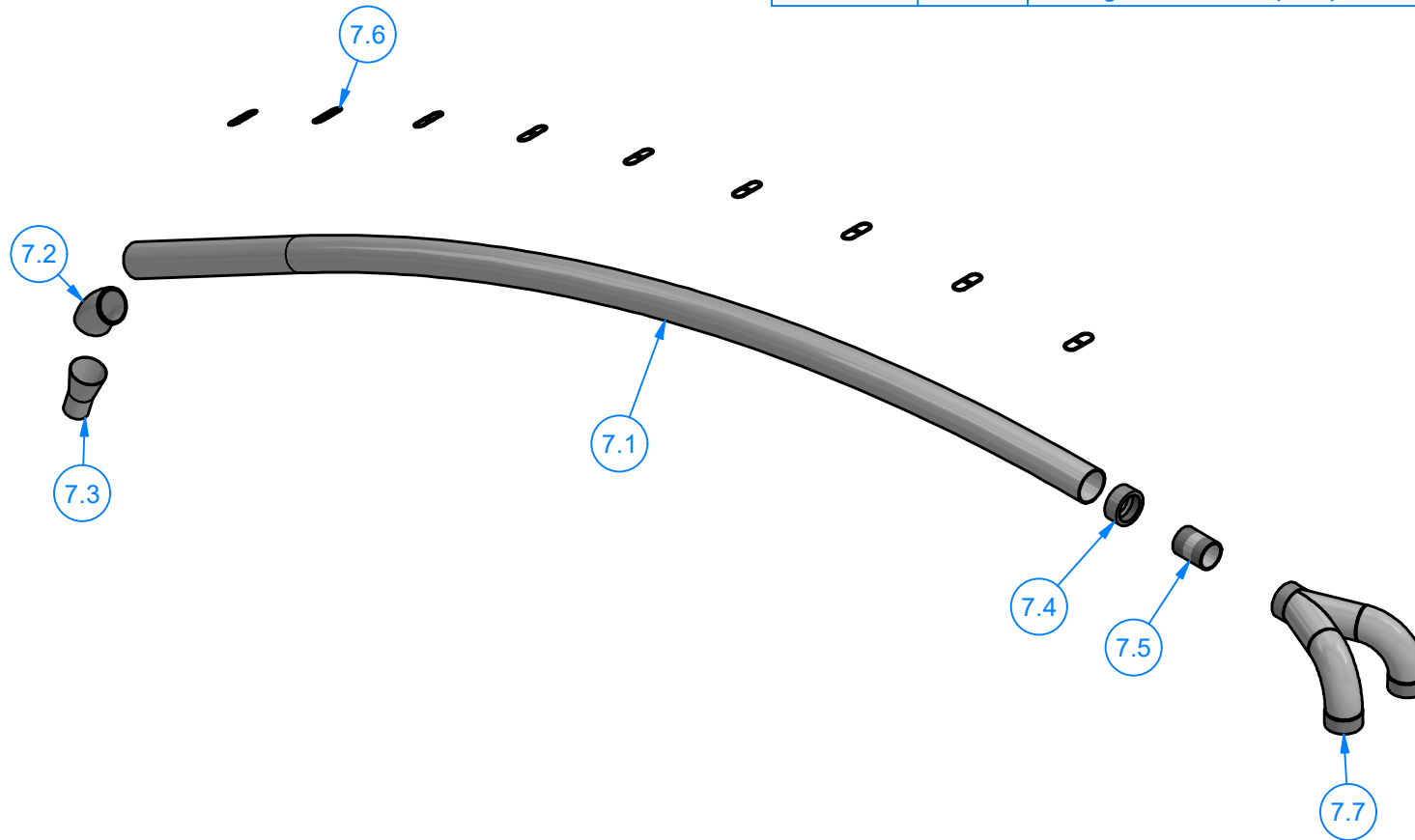
SIZE  
A

EST WEIGHT:

SHEET 7 of 29

PATH:L:\Designs\Product Lines\Vacuum Arches\AVW Standard Vacuum Arches (VA5129A)\Vacuum Arch (108 in. Post)\Parts\Access Plate.ipt

Parts List		
ITEM	QTY	DESCRIPTION
7.1	1	Pipe - 2 1/2 x Sch10 x 109" LG.
7.2	1	45 Deg Pipe Sweep Elbow - 2 1/2" Pipe Sch40
7.3	1	Round Tubing 2" OD x .049 Wall x 4 1/2" LG w/ Flared End 2 7/8" OD
7.4	1	Half Coupling - 2 NPT
7.5	1	Nipple - 2" NPT x 3" LG
7.6	9	D-Rings Canopy
7.7	1	90 Deg Dual Hose Pipe Splitter w/ Three 2" Couplings



AVW EQUIPMENT CO., INC.  
105 S. 9TH AVENUE  
MAYWOOD, IL 60153  
Tel: 708-343-7738 Fax: 708-343-9065  
WWW.AVWEQUIPMENT.COM

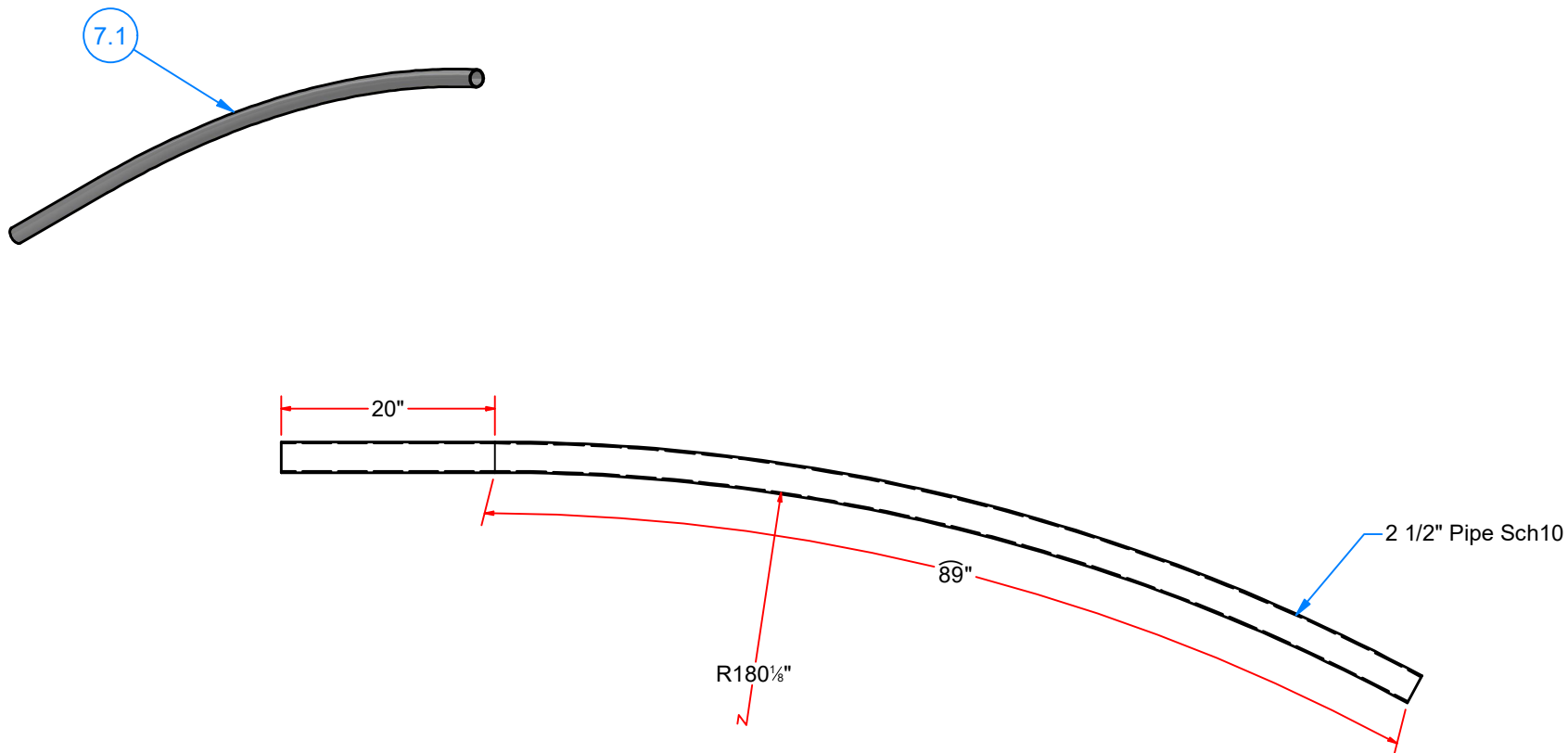
**- COMPANY PROPRIETARY NOTE -**

THIS DRAWING AND ITS DESIGNS ARE PROPERTY OF AVW EQUIPMENT CO. & IT IS NOT TO BE USED OR REPRODUCED WITHOUT THE PERMISSION FROM AVW CO.

DRAWN BY	Ljubomir	CUSTOMER:	
CHECKED BY		PROJECT:	
QTY		DESCRIPTION: Vacuum Canopy Top Pipe Assembly	
RELEASE DATE	1/11/2021	PART NUMBER: Vacuum Canopy Top Pipe Assembly	REV# 001
DIMENSION ARE IN INCHES & PROVIDED PRIOR TO SURFACE TREATMENTS, UNLESS NOTED.		SIZE A	EST WEIGHT:
			SHEET 8 of 29

PATH:L:\Designs\Product Lines\Vacuum Arches\AVW Standard Vacuum Arches (VA5129A)\Vacuum Arch (108 in. Post)\Parts\Vacuum Canopy Top Pipe Assembly.iam





Original (Straight) pipe - 109" length



AVW EQUIPMENT CO., INC.  
105 S. 9TH AVENUE  
MAYWOOD, IL 60153  
Tel: 708-343-7738 Fax: 708-343-9065  
WWW.AVWEQUIPMENT.COM

**- COMPANY PROPRIETARY NOTE -**

THIS DRAWING AND ITS DESIGNS ARE PROPERTY OF AVW EQUIPMENT CO. & IT IS NOT TO BE USED OR REPRODUCED WITHOUT THE PERMISSION FROM AVW CO.

DRAWN BY

Ljubomir

CUSTOMER:

CHECKED BY

PROJECT:

QTY

DESCRIPTION: Pipe - 2 1/2 x Sch10 x 109" LG.

RELEASE DATE

1/11/2021

PART NUMBER: AVWSTD - Pipe 2 1\_2 x 109

REV# 001

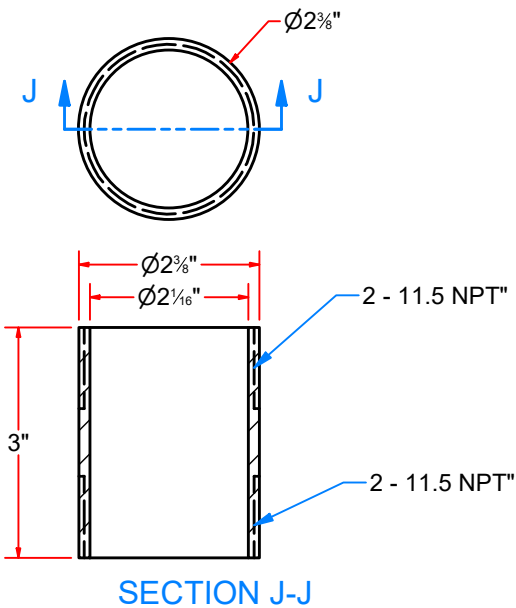
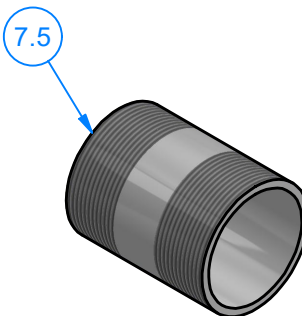
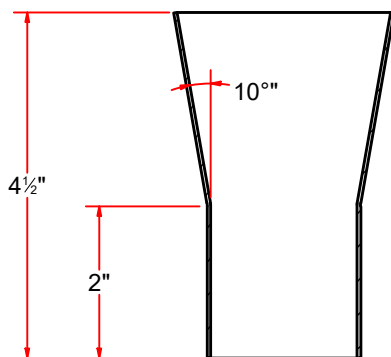
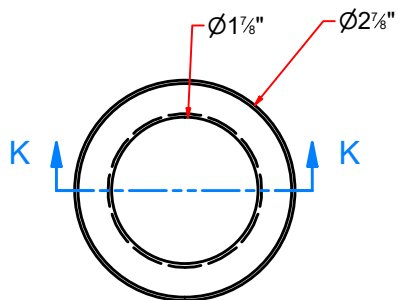
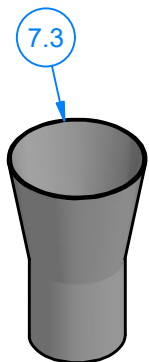
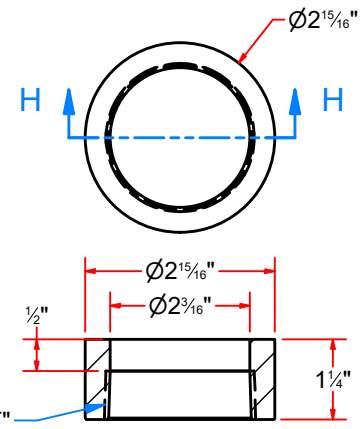
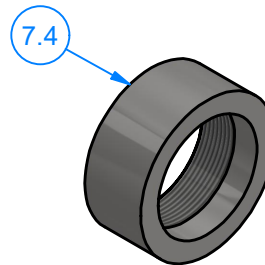
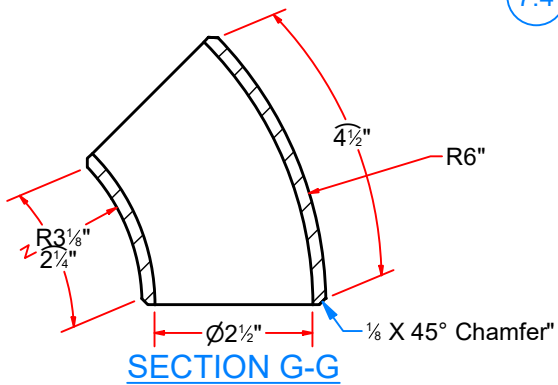
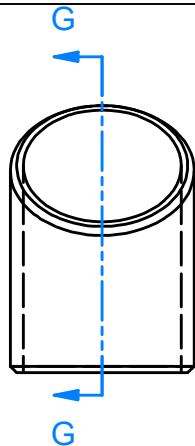
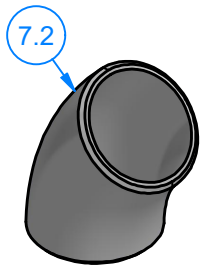
DIMENSION ARE IN INCHES & PROVIDED PRIOR TO SURFACE TREATMENTS, UNLESS NOTED.

SIZE  
**A**

EST WEIGHT:

SHEET 9 of 29

PATH:L:\Designs\Product Lines\Vacuum Arches\AVW Standard Vacuum Arches (VA5129A)\Vacuum Arch (108 in. Post)\Parts\AVWSTD - Pipe 2 1\_2 x 109.ipt



AVW EQUIPMENT CO., INC.  
105 S. 9TH AVENUE  
MAYWOOD, IL 60153  
Tel: 708-343-7738 Fax: 708-343-9065  
WWW.AVWEQUIPMENT.COM

**- COMPANY PROPRIETARY NOTE -**

THIS DRAWING AND ITS DESIGNS ARE PROPERTY OF AVW EQUIPMENT CO. & IT IS NOT TO BE USED OR REPRODUCED WITHOUT THE PERMISSION FROM AVW CO.

DRAWN BY

Ljubomir

CUSTOMER:

CHECKED BY

PROJECT:

QTY

DESCRIPTION: 45 Deg Pipe Sweep Elbow - 2 1/2" Pipe Sch40

RELEASE DATE

1/11/2021

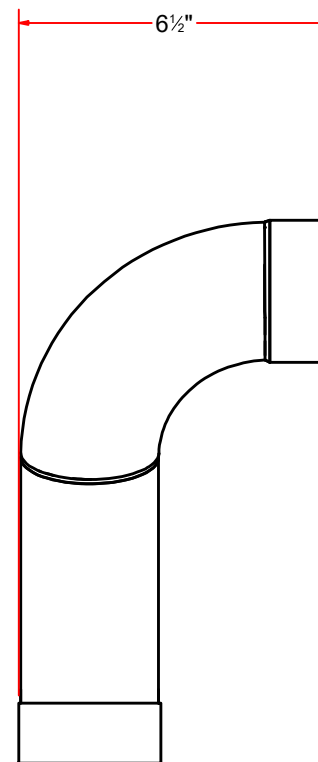
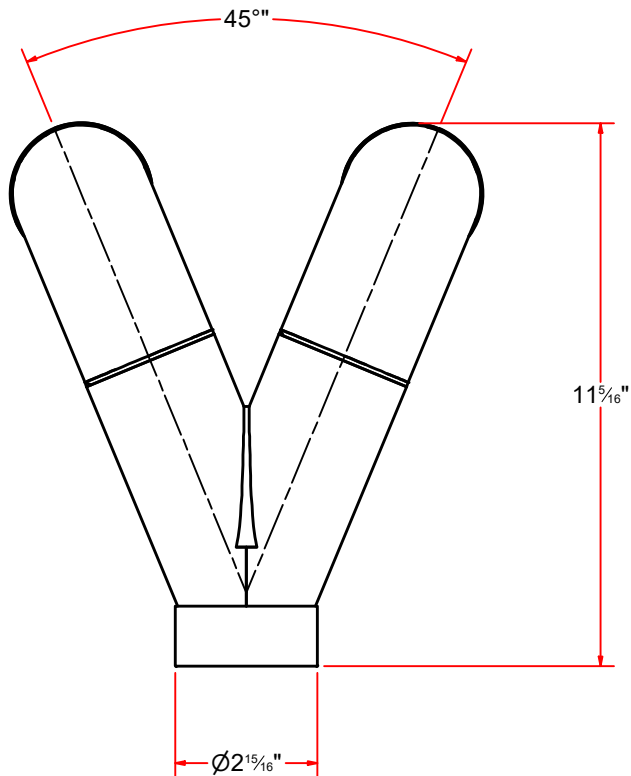
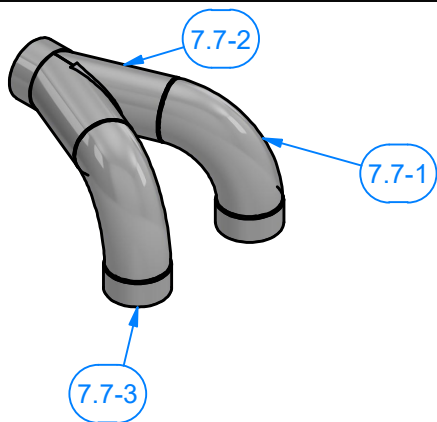
PART NUMBER: 45 Deg Pipe Sweep Elbow - 2-1\_2 Pipe Sch40 Rev# 001

DIMENSION ARE IN INCHES & PROVIDED PRIOR TO SURFACE TREATMENTS, UNLESS NOTED.

SIZE A

EST WEIGHT:

SHEET 10 of 29



# Parts List

ITEM	QTY	DESCRIPTION
7.7-1	2	90 Deg Pipe Sweep Elbow - 2 1/2" Pipe Sch40
7.7-2	2	Pipe - 2 1/2" #Sch10 x 5 1/2" LG.
7.7-3	3	Half Coupling - 2 NPT



AVW EQUIPMENT CO., INC.  
105 S. 9TH AVENUE  
MAYWOOD, IL 60153  
Tel: 708-343-7738 Fax: 708-343-9065  
WWW.AVWEQUIPMENT.COM

## - COMPANY PROPRIETARY NOTE -

THIS DRAWING AND ITS DESIGNS ARE PROPERTY OF AVW EQUIPMENT CO. & IT IS NOT TO BE USED OR REPRODUCED WITHOUT THE PERMISSION FROM AVW CO.

DRAWN BY

Ljubomir

CUSTOMER:

CHECKED BY

PROJECT:

QTY

DESCRIPTION: 90 Deg Dual Hose Pipe Splitter w/ Three 2" Couplings

RELEASE DATE

1/11/2021

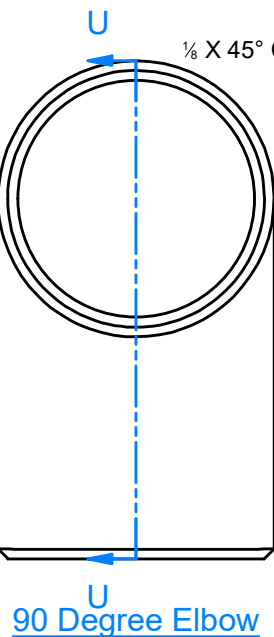
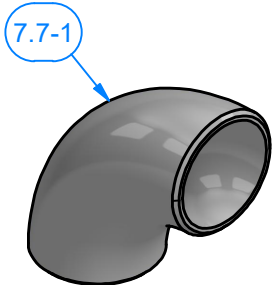
PART NUMBER: 90 Deg Dual Hose Pipe Splitter with Three 2 in. Couplings

DIMENSION ARE IN INCHES & PROVIDED PRIOR TO SURFACE TREATMENTS, UNLESS NOTED.

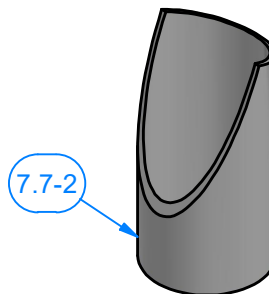
SIZE  
A

EST WEIGHT:

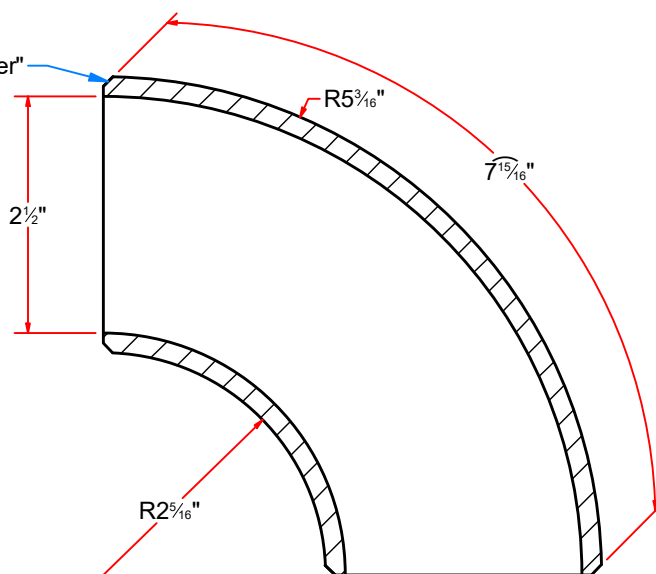
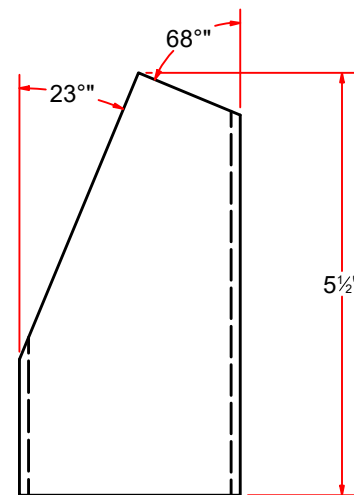
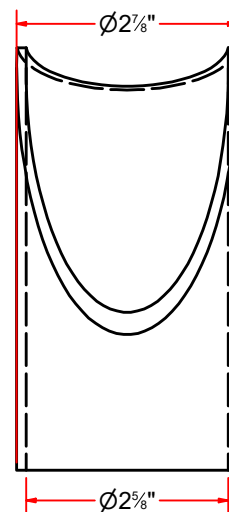
SHEET 11 of 29



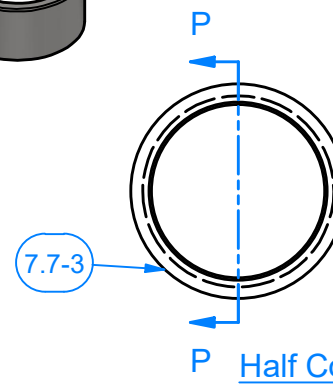
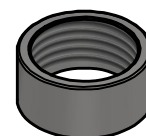
90 Degree Elbow



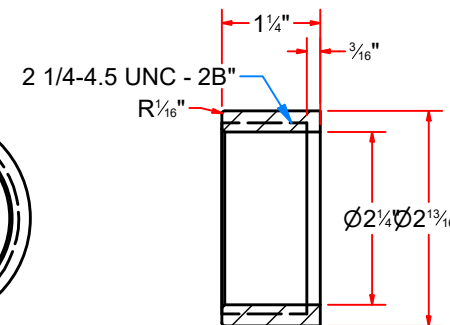
23 Degree, Pipe Splitter Neck



SECTION U-U



Half Coupling



SECTION P-P



AVW EQUIPMENT CO., INC.  
105 S. 9TH AVENUE  
MAYWOOD, IL 60153  
Tel: 708-343-7738 Fax: 708-343-9065  
WWW.AVWEQUIPMENT.COM

- COMPANY PROPRIETARY NOTE -

THIS DRAWING AND ITS DESIGNS ARE PROPERTY OF AVW EQUIPMENT CO. & IT IS NOT TO BE USED OR REPRODUCED WITHOUT THE PERMISSION FROM AVW CO.

DRAWN BY

Ljubomir

CUSTOMER:

CHECKED BY

PROJECT:

QTY

DESCRIPTION: 2" Half Coupling

RELEASE DATE

1/11/2021

PART NUMBER:

REV# 001

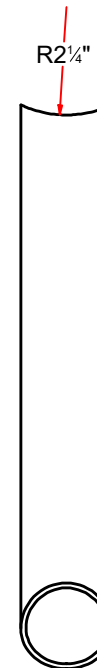
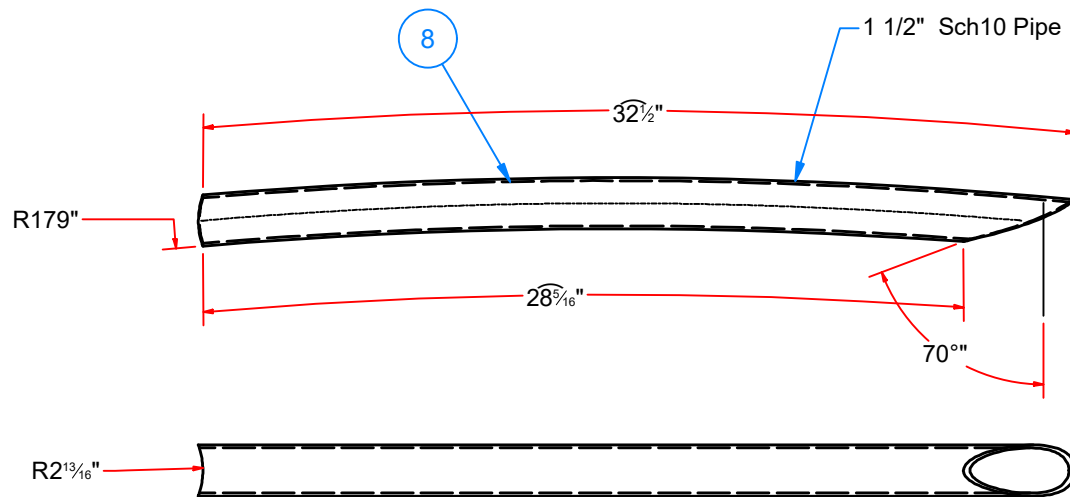
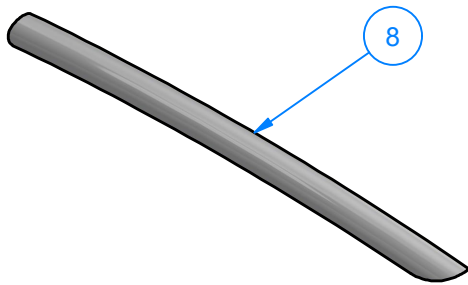
DIMENSION ARE IN INCHES & PROVIDED PRIOR TO SURFACE TREATMENTS, UNLESS NOTED.

SIZE A

EST WEIGHT:

SHEET 12 of 29

PATH:L:\Libraries\Parts\Couplings\Half Coupling\2 Half Coupling.ipt



70 Degree Cut Straight View



AVW EQUIPMENT CO., INC.  
105 S. 9TH AVENUE  
MAYWOOD, IL 60153  
Tel: 708-343-7738 Fax: 708-343-9065  
WWW.AVWEQUIPMENT.COM

**- COMPANY PROPRIETARY NOTE -**

THIS DRAWING AND ITS DESIGNS ARE PROPERTY OF AVW EQUIPMENT CO. & IT IS NOT TO BE USED OR REPRODUCED WITHOUT THE PERMISSION FROM AVW CO.

DRAWN BY

Ljubomir

CUSTOMER:

CHECKED BY

PROJECT:

QTY

DESCRIPTION: Pipe - 1 1/2 x Sch10 x 33" LG.

RELEASE DATE

1/11/2021

PART NUMBER: AVWSTD - Pipe Gusset

REV# 001

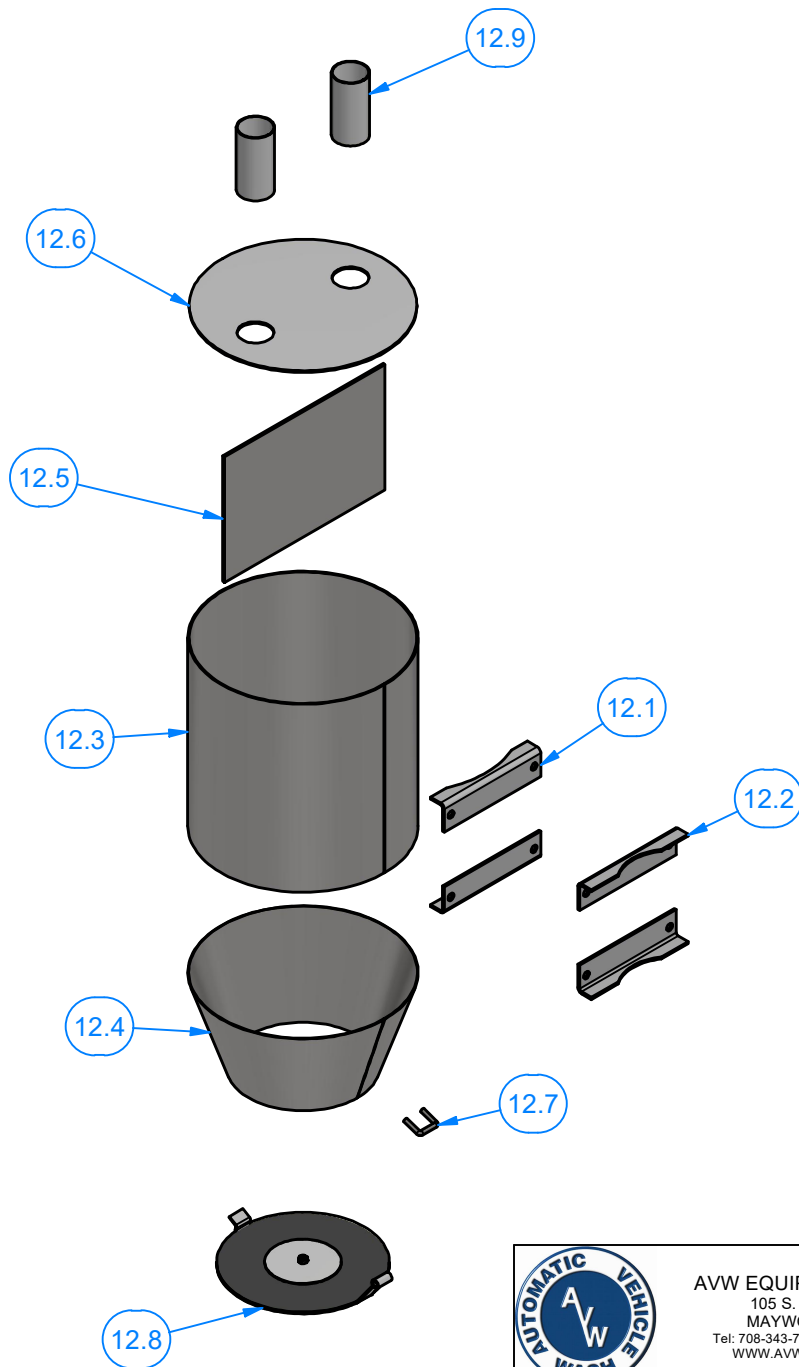
DIMENSION ARE IN INCHES & PROVIDED PRIOR TO SURFACE TREATMENTS, UNLESS NOTED.

SIZE  
**A**

EST WEIGHT:

SHEET 13 of 29

PATH:L:\Designs\Product Lines\Vacuum Arches\AVW Standard Vacuum Arches (VA5129A)\Vacuum Arch (108 in. Post)\Parts\AVWSTD - Pipe Gusset.ipt



Parts List		
ITEM	QTY	DESCRIPTION
12.1	2	vacuum canister bracket - cannister mount - U-bolt type
12.2	2	vacuum canister bracket - U-bolt type
12.3	1	Sheet Metal #14Ga x 12" x 37 3/4"
12.4	1	Sheet Metal #18Ga x 32" x 12"
12.5	1	Sheet Metal #10Ga x 8" x 11 13/16" LG
12.6	1	Sheet Metal #12Ga. x 11 7/8" O.D.
12.7	1	Round Bar 1/4" OD x 4" LG
12.8	1	Vacuum Canister Bottom Lid 16"
12.9	2	Round Tubing - 2 x .049 Wall x 4 LG.



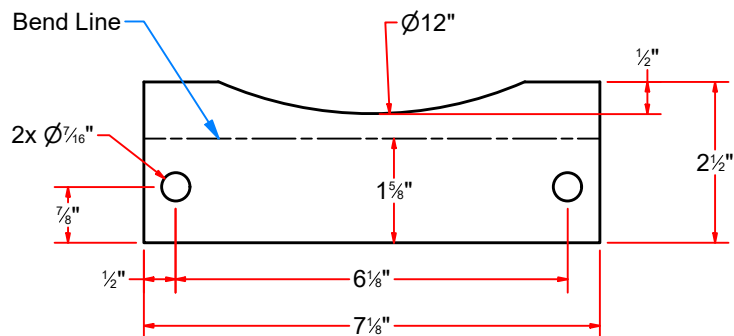
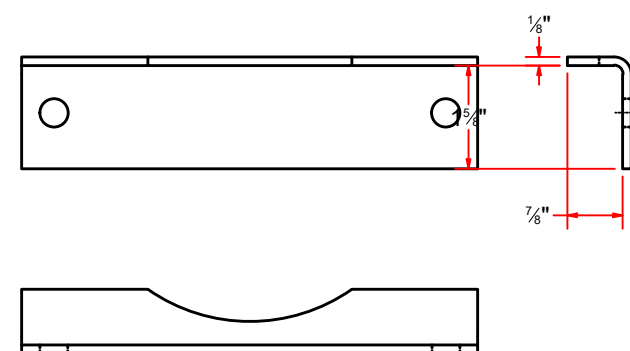
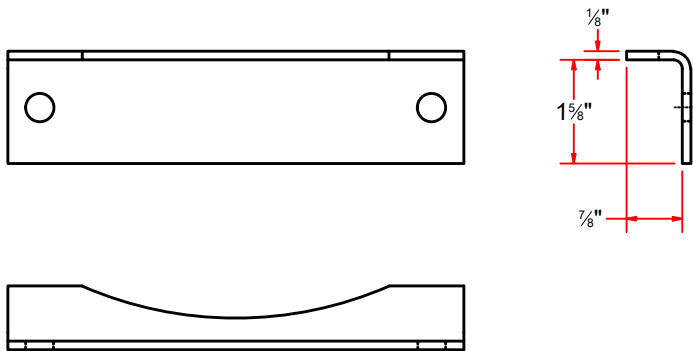
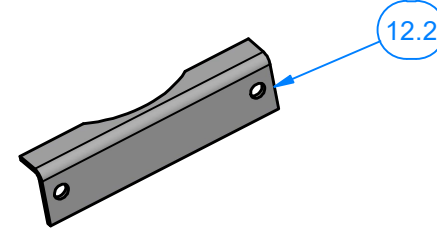
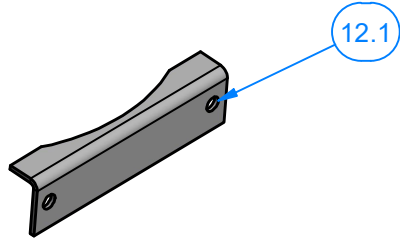
AVW EQUIPMENT CO., INC.  
105 S. 9TH AVENUE  
MAYWOOD, IL 60153  
Tel: 708-343-7738 Fax: 708-343-9065  
WWW.AVWEQUIPMENT.COM

**- COMPANY PROPRIETARY NOTE -**

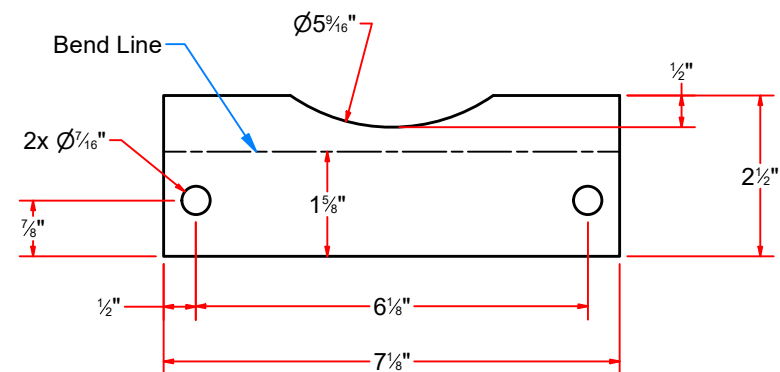
THIS DRAWING AND ITS DESIGNS ARE PROPERTY OF AVW EQUIPMENT CO. & IT IS NOT TO BE USED OR REPRODUCED WITHOUT THE PERMISSION FROM AVW CO.

DRAWN BY	Ljubomir	CUSTOMER:	
CHECKED BY		PROJECT:	
QTY		DESCRIPTION: Vacuum Separator - Plain hose connections - U-bolt type	
RELEASE DATE	1/11/2021	PART NUMBER: Vacuum Separator - Plain hose connections - U-bolt type	REV: 001
DIMENSION ARE IN INCHES & PROVIDED PRIOR TO SURFACE TREATMENTS, UNLESS NOTED.		SIZE A	EST WEIGHT:
		SHEET 14 of 29	

PATH:L:\Designs\Product Lines\Vacuum Arches\AVW Standard Vacuum Arches (VA5129A)\Vacuum Arch (108 in. Post)\Parts\Vacuum Separator - Plain hose connections - U-bolt type.iam



Flat Pattern



Flat Pattern

10/22/18 Revised gusset pipe dia. was 2 1/2" now 1 1/2" F.C.



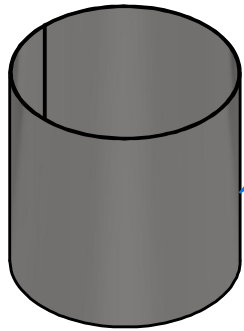
AVW EQUIPMENT CO., INC.  
105 S. 9TH AVENUE  
MAYWOOD, IL 60153  
Tel: 708-343-7738 Fax: 708-343-9065  
WWW.AVWEQUIPMENT.COM

**- COMPANY PROPRIETARY NOTE -**

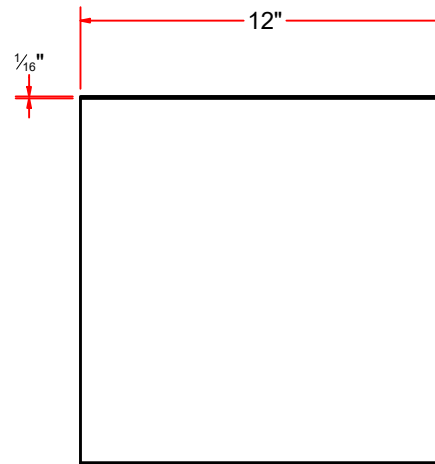
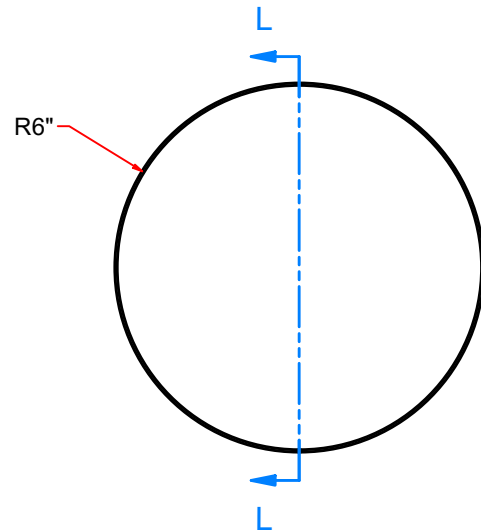
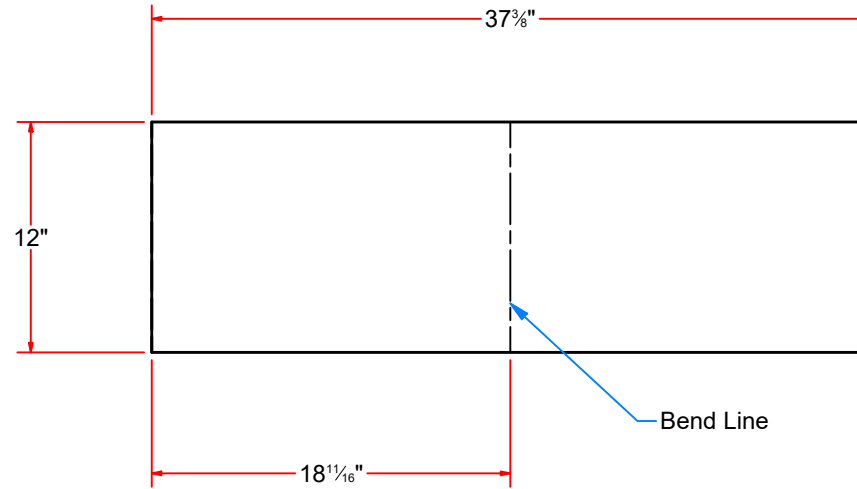
THIS DRAWING AND ITS DESIGNS ARE PROPERTY OF AVW EQUIPMENT CO. & IT IS NOT TO BE USED OR REPRODUCED WITHOUT THE PERMISSION FROM AVW CO.

DRAWN BY	Ljubomir	CUSTOMER:	
CHECKED BY		PROJECT:	
QTY		DESCRIPTION: vacuum canister bracket - cannister mount - U-bolt type	
RELEASE DATE	1/11/2021	PART NUMBER: vacuum canister bracket - cannister mount - U-bolt type	REV: 001
DIMENSION ARE IN INCHES & PROVIDED PRIOR TO SURFACE TREATMENTS, UNLESS NOTED.		SIZE A	EST WEIGHT:
			SHEET 15 of 29

PATH:L:\Designs\Product Lines\Vacuum Arches\AVW Standard Vacuum Arches (VA5129A)\Vacuum Arch (108 in. Post)\Parts\vacuum canister bracket - cannister mount - U-bolt type.ipt



12.3



SECTION L-L



AVW EQUIPMENT CO., INC.  
105 S. 9TH AVENUE  
MAYWOOD, IL 60153  
Tel: 708-343-7738 Fax: 708-343-9065  
WWW.AVWEQUIPMENT.COM

**- COMPANY PROPRIETARY NOTE -**

THIS DRAWING AND ITS DESIGNS ARE PROPERTY OF AVW EQUIPMENT CO. & IT IS NOT TO BE USED OR REPRODUCED WITHOUT THE PERMISSION FROM AVW CO.

DRAWN BY

Ljubomir

CUSTOMER:

CHECKED BY

PROJECT:

QTY

DESCRIPTION: Sheet Metal #14Ga x 12" x 37 3/4"

RELEASE  
DATE

1/11/2021

PART NUMBER: AVWVS-001

REV# 001

DIMENSION ARE IN INCHES & PROVIDED PRIOR  
TO SURFACE TREATMENTS, UNLESS NOTED.

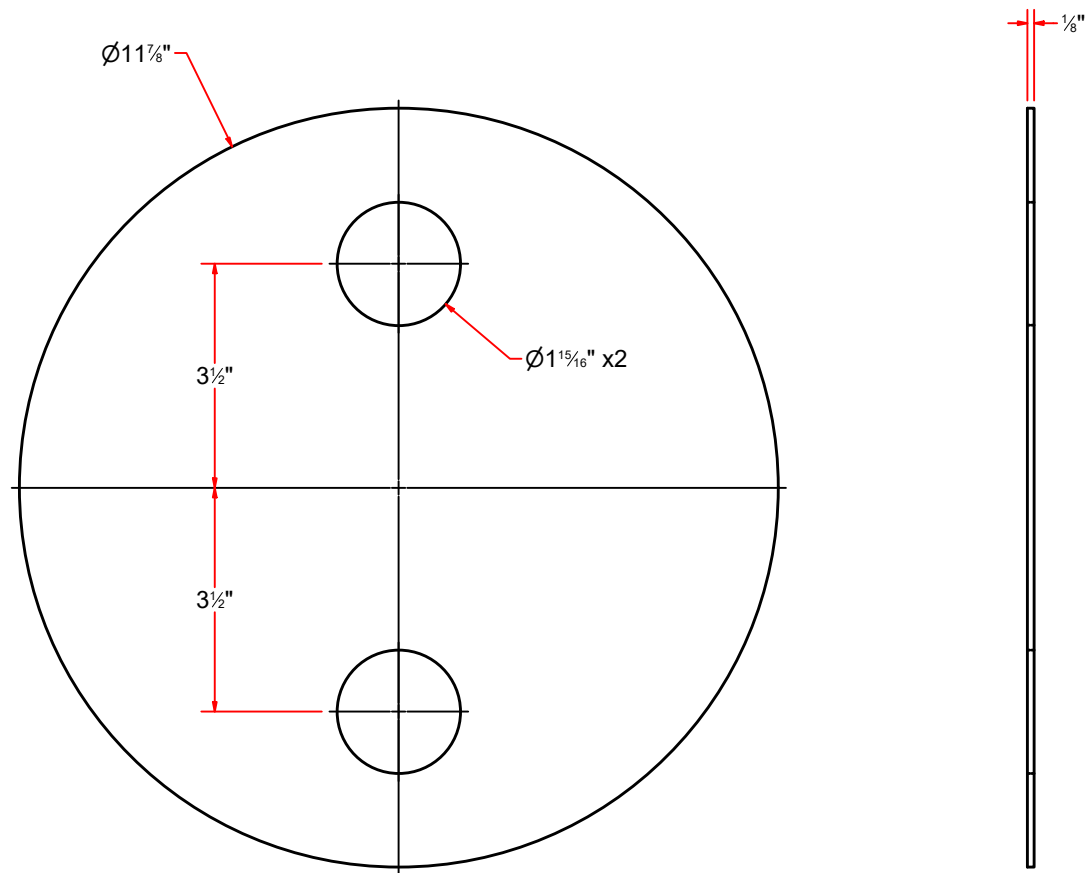
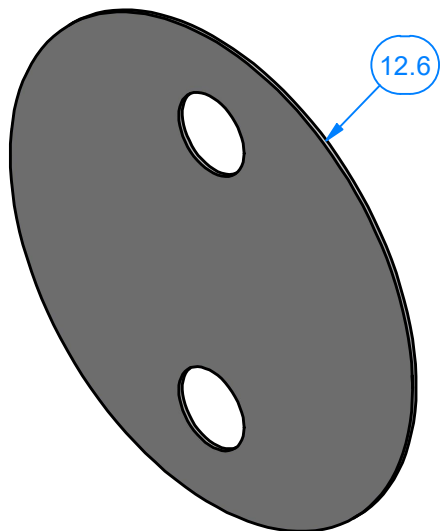
SIZE  
**A**

EST WEIGHT:

SHEET 16 of 29







AVW EQUIPMENT CO., INC.  
105 S. 9TH AVENUE  
MAYWOOD, IL 60153  
Tel: 708-343-7738 Fax: 708-343-9065  
WWW.AVWEQUIPMENT.COM

**- COMPANY PROPRIETARY NOTE -**

THIS DRAWING AND ITS DESIGNS ARE PROPERTY OF AVW EQUIPMENT CO. &  
IT IS NOT TO BE USED OR REPRODUCED WITHOUT THE PERMISSION FROM AVW CO.

DRAWN BY

Ljubomir

CUSTOMER:

CHECKED BY

PROJECT:

QTY

DESCRIPTION: Sheet Metal #12Ga. x 11 7/8" O.D.

RELEASE  
DATE

1/11/2021

PART NUMBER: AVWVS-004

REV# 001

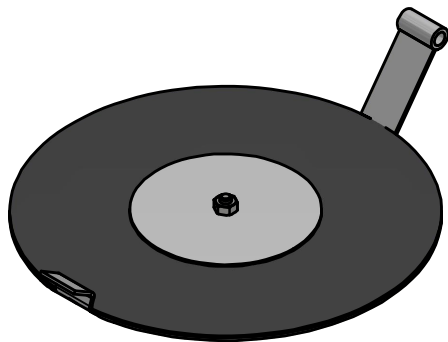
DIMENSION ARE IN INCHES & PROVIDED PRIOR  
TO SURFACE TREATMENTS, UNLESS NOTED.

SIZE  
**A**

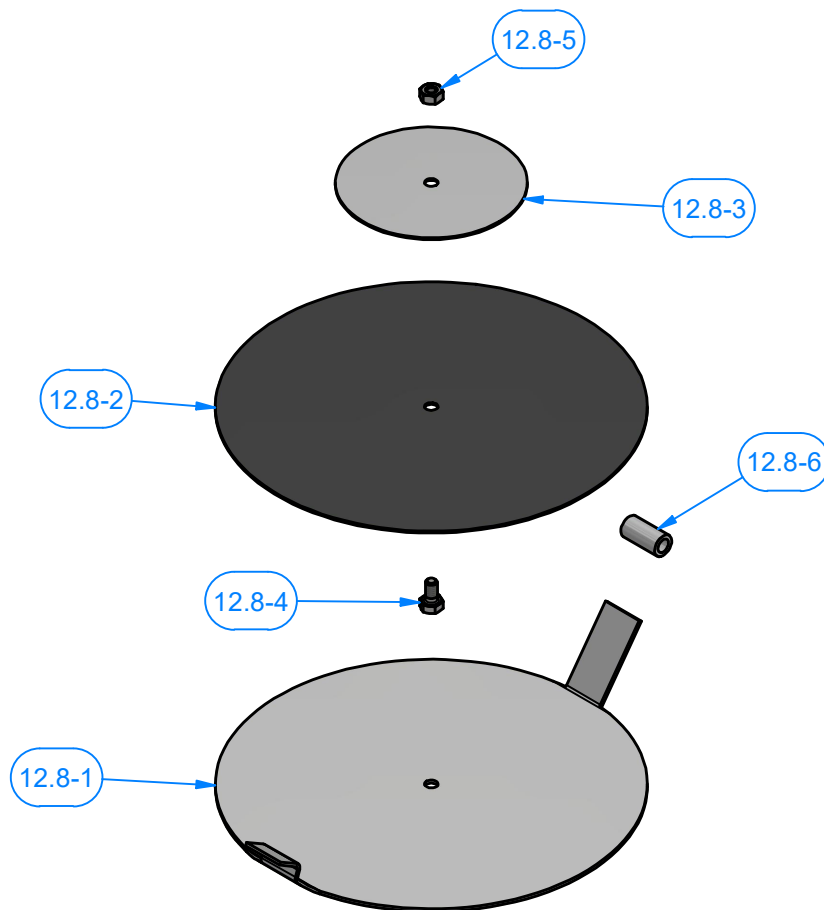
EST WEIGHT:

SHEET 18 of 29

PATH:L:\Designs\Product Lines\Vacuum Arches\AVW Standard Vacuum Arches (VA5129A)\Vacuum Arch (108 in. Post)\Parts\AVWVS-004.ipt



Parts List		
ITEM	QTY	DESCRIPTION
12.8-1	1	Sheet Metal #14Ga x D 9"
12.8-2	1	Rubber Seal D 9" (9/32" center hole)
12.8-3	1	Sheet Metal #14Ga x D 4" (9/32" center hole)
12.8-4	1	Hex Bolt - 1/4-20 UNC x 0.5 LG
12.8-5	1	Hex Nut - 1/4-20 UNC
12.8-6	1	Round Tubing - 1/2 x .095 Wall x 1 LG.



AVW EQUIPMENT CO., INC.  
105 S. 9TH AVENUE  
MAYWOOD, IL 60153  
Tel: 708-343-7738 Fax: 708-343-9065  
WWW.AVWEQUIPMENT.COM

**- COMPANY PROPRIETARY NOTE -**

THIS DRAWING AND ITS DESIGNS ARE PROPERTY OF AVW EQUIPMENT CO. & IT IS NOT TO BE USED OR REPRODUCED WITHOUT THE PERMISSION FROM AVW CO.

DRAWN BY

Ljubomir

CUSTOMER:

CHECKED BY

PROJECT:

QTY

DESCRIPTION: Vacuum Canister Bottom Lid 16"

RELEASE DATE

1/11/2021

PART NUMBER: Vacuum Canister Bottom Lid

REV# 001

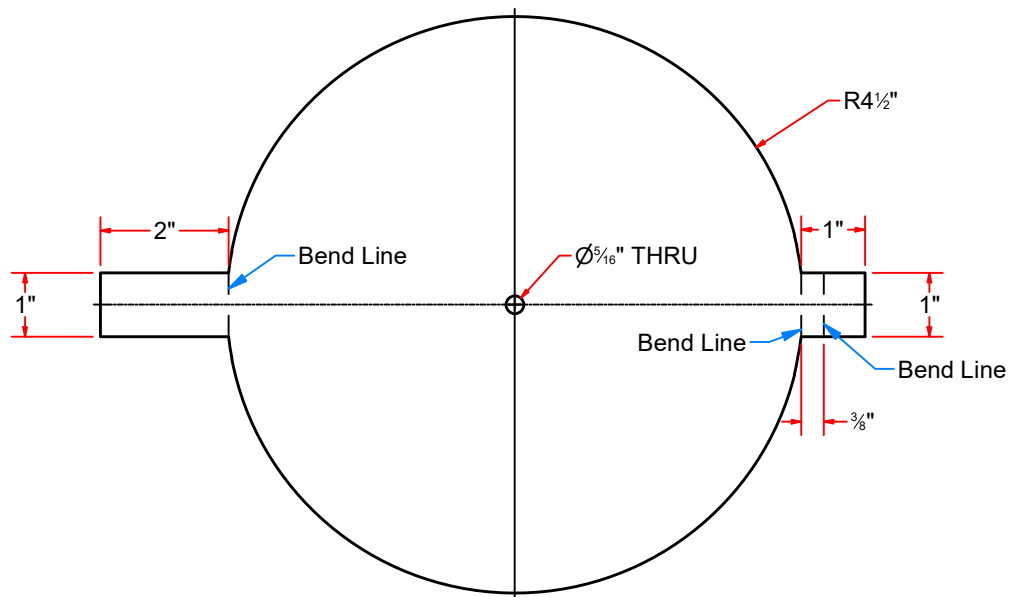
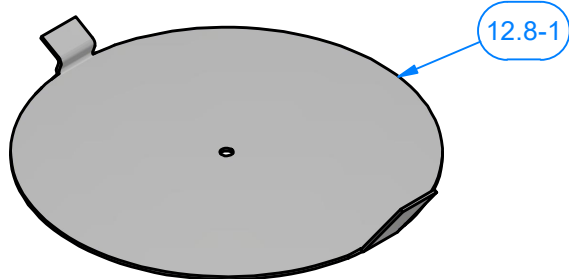
DIMENSION ARE IN INCHES & PROVIDED PRIOR TO SURFACE TREATMENTS, UNLESS NOTED.

SIZE  
A

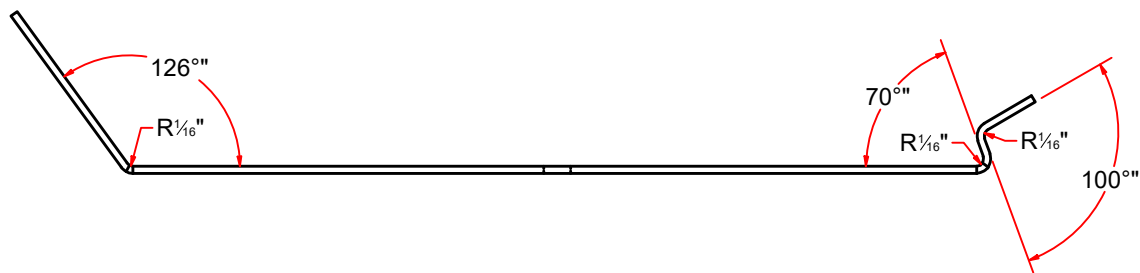
EST WEIGHT:

SHEET 19 of 29

PATH:L:\Designs\Product Lines\Vacuum Arches\AVW Standard Vacuum Arches (VA5129A)\Vacuum Arch (108 in. Post)\Parts\Vacuum Canister Bottom Lid.iam



Flat Pattern



AVW EQUIPMENT CO., INC.  
105 S. 9TH AVENUE  
MAYWOOD, IL 60153  
Tel: 708-343-7738 Fax: 708-343-9065  
WWW.AVWEQUIPMENT.COM

**- COMPANY PROPRIETARY NOTE -**

THIS DRAWING AND ITS DESIGNS ARE PROPERTY OF AVW EQUIPMENT CO. & IT IS NOT TO BE USED OR REPRODUCED WITHOUT THE PERMISSION FROM AVW CO.

DRAWN BY

Ljubomir

CUSTOMER:

CHECKED BY

PROJECT:

QTY

DESCRIPTION: Sheet Metal #14Ga x D 9"

RELEASE DATE

1/11/2021

PART NUMBER: VA3246S\_004

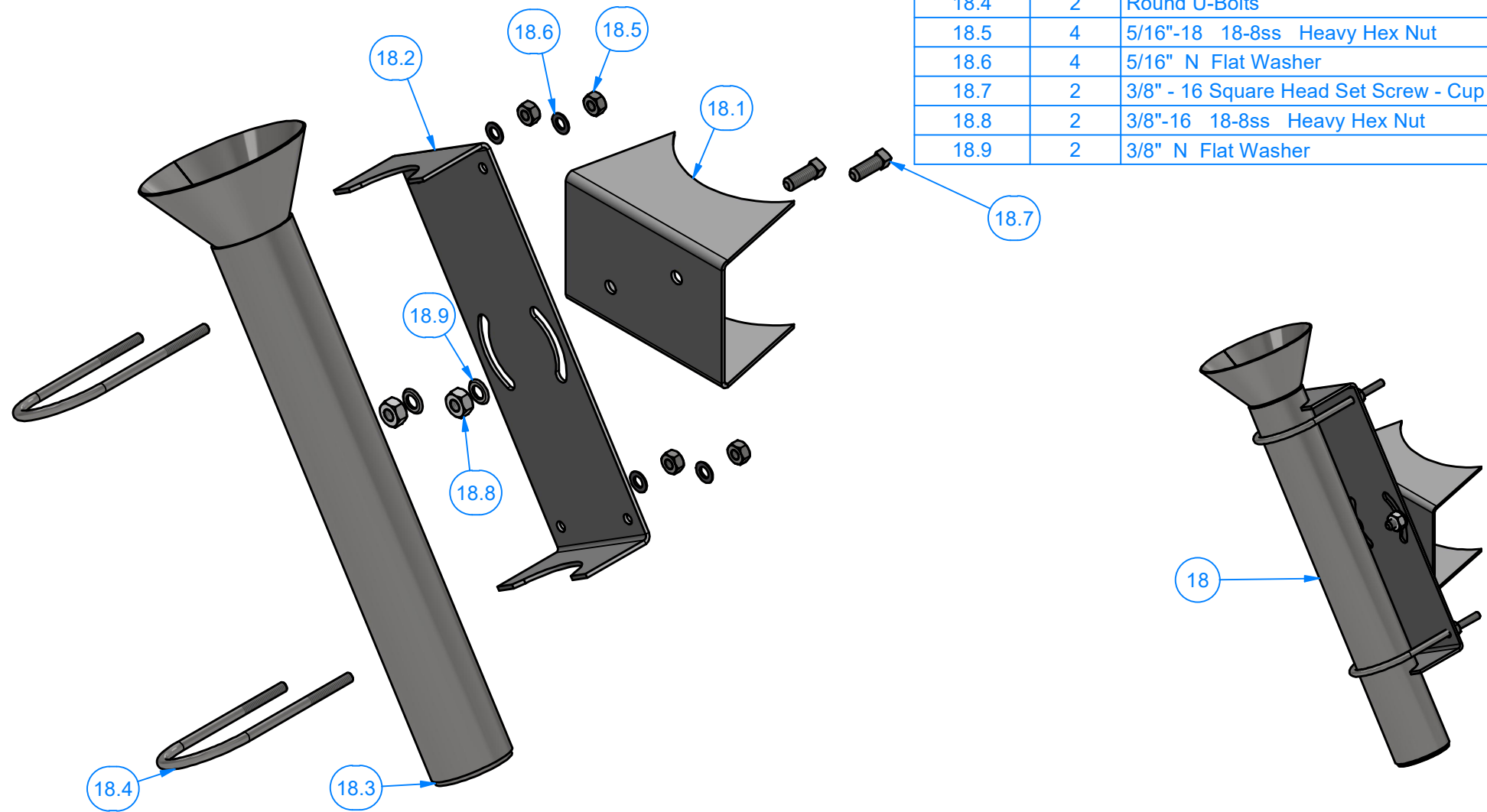
REV# 001

DIMENSION ARE IN INCHES & PROVIDED PRIOR TO SURFACE TREATMENTS, UNLESS NOTED.

SIZE  
**A**

EST WEIGHT:

SHEET 20 of 29



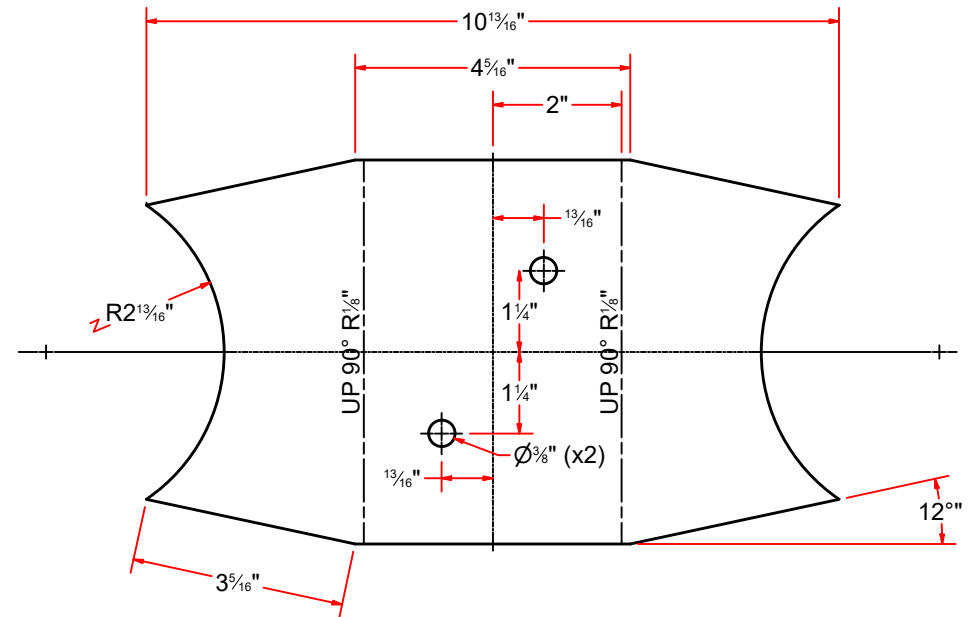
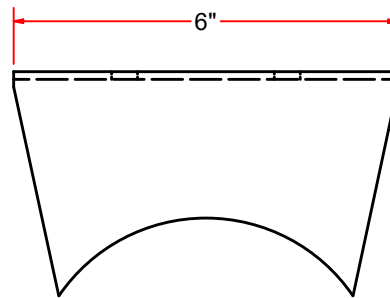
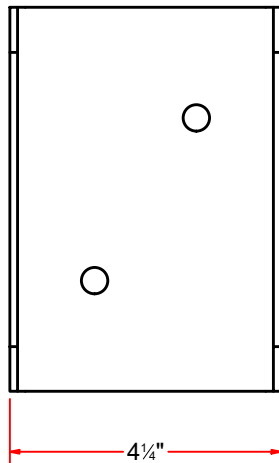
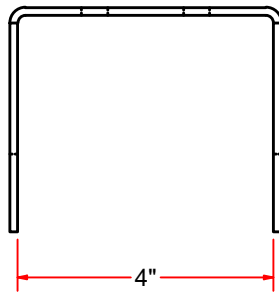
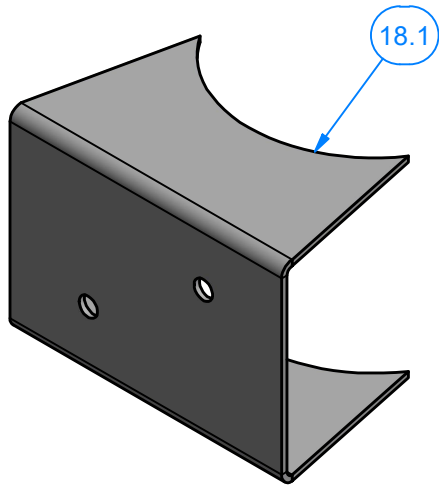
Parts List		
ITEM	QTY	DESCRIPTION
18.1	1	Holder Bracket 2
18.2	1	Holder Bracket 1 w/Slots
18.3	1	Stainless Steel Vacuum Holster
18.4	2	Round U-Bolts
18.5	4	5/16"-18 18-8ss Heavy Hex Nut
18.6	4	5/16" N Flat Washer
18.7	2	3/8" - 16 Square Head Set Screw - Cup Point
18.8	2	3/8"-16 18-8ss Heavy Hex Nut
18.9	2	3/8" N Flat Washer



AVW EQUIPMENT CO., INC.  
105 S. 9TH AVENUE  
MAYWOOD, IL 60153  
Tel: 708-343-7738 Fax: 708-343-9065  
WWW.AVWEQUIPMENT.COM

- COMPANY PROPRIETARY NOTE -  
THIS DRAWING AND ITS DESIGNS ARE PROPERTY OF AVW EQUIPMENT CO. &  
IT IS NOT TO BE USED OR REPRODUCED WITHOUT THE PERMISSION FROM AVW CO.

DRAWN BY	Ljubomir	CUSTOMER:	
CHECKED BY		PROJECT:	
QTY		DESCRIPTION: Claw Holder (Stainless Steel) - D	
RELEASE DATE	1/11/2021	PART NUMBER: Claw Holder (Stainless Steel) - D	REV# 001
DIMENSION ARE IN INCHES & PROVIDED PRIOR TO SURFACE TREATMENTS, UNLESS NOTED.		SIZE A	EST WEIGHT:



AVW EQUIPMENT CO., INC.  
105 S. 9TH AVENUE  
MAYWOOD, IL 60153  
Tel: 708-343-7738 Fax: 708-343-9065  
WWW.AVWEQUIPMENT.COM

**- COMPANY PROPRIETARY NOTE -**

THIS DRAWING AND ITS DESIGNS ARE PROPERTY OF AVW EQUIPMENT CO. & IT IS NOT TO BE USED OR REPRODUCED WITHOUT THE PERMISSION FROM AVW CO.

DRAWN BY

Ljubomir

CUSTOMER:

CHECKED BY

PROJECT:

QTY

DESCRIPTION: Holder Bracket 2

RELEASE DATE

1/11/2021

PART NUMBER: Holder Bracket 2

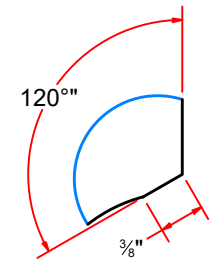
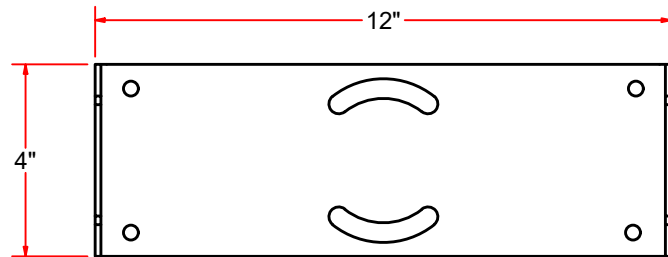
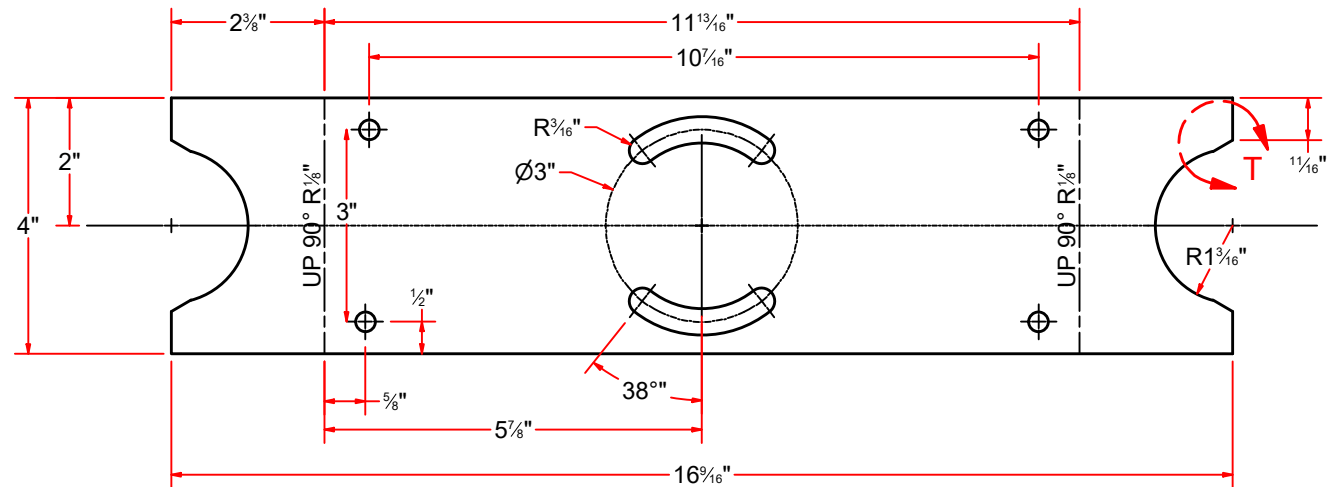
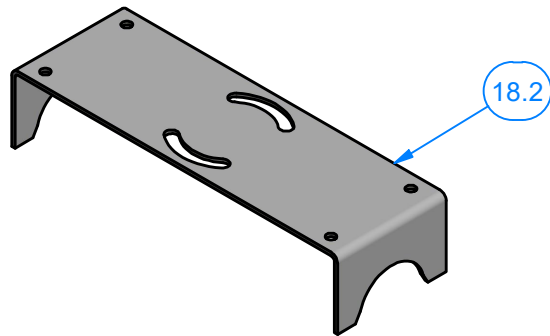
REV# 001

DIMENSION ARE IN INCHES & PROVIDED PRIOR TO SURFACE TREATMENTS, UNLESS NOTED.

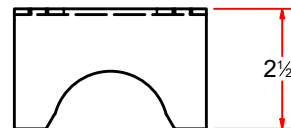
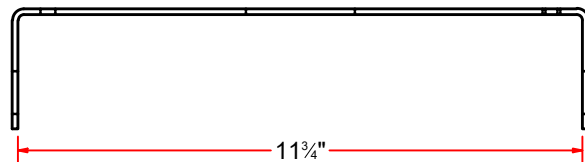
SIZE  
**A**

EST WEIGHT:

SHEET 22 of 29



DETAIL T



AVW EQUIPMENT CO., INC.  
105 S. 9TH AVENUE  
MAYWOOD, IL 60153  
Tel: 708-343-7738 Fax: 708-343-9065  
WWW.AVWEQUIPMENT.COM

**- COMPANY PROPRIETARY NOTE -**

THIS DRAWING AND ITS DESIGNS ARE PROPERTY OF AVW EQUIPMENT CO. & IT IS NOT TO BE USED OR REPRODUCED WITHOUT THE PERMISSION FROM AVW CO.

DRAWN BY

Ljubomir

CUSTOMER:

CHECKED BY

PROJECT:

QTY

DESCRIPTION: Holder Bracket 1 w/Slots

RELEASE DATE

1/11/2021

PART NUMBER: Holder Bracket

REV# 001

DIMENSION ARE IN INCHES & PROVIDED PRIOR TO SURFACE TREATMENTS, UNLESS NOTED.

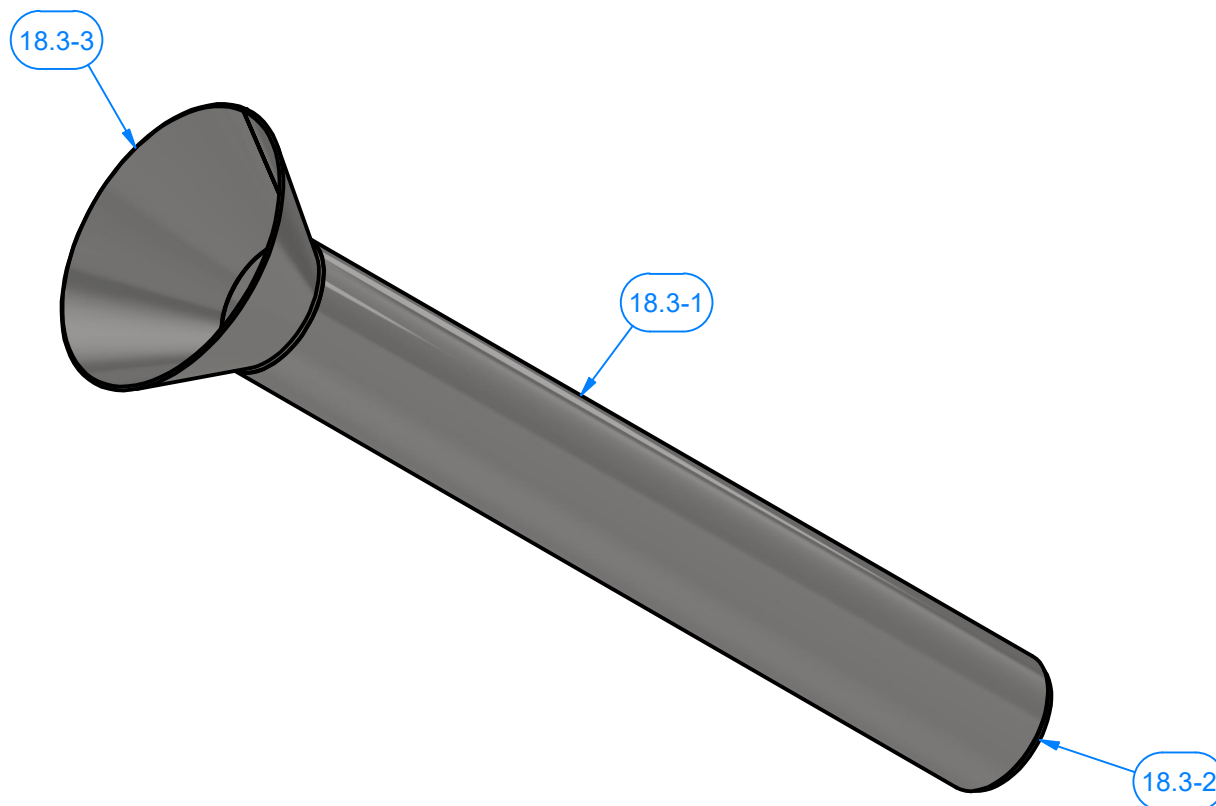
SIZE  
**A**

EST WEIGHT:

SHEET 23 of 29

PATH:L:\Libraries\Productivity\Vacuum Arches\Claw Holders\VA5129ACH-0121 - Claw Holder (Sainless Steel)\Parts\Holder Bracket.ipt

Parts List		
ITEM	QTY	DESCRIPTION
18.3-1	1	2" Pipe, Schedule 10, LG 16"
18.3-2	1	Cover Plate #10Ga - 2" Pipe, Sch 10
18.3-3	1	Sheet Metal #16Ga



AVW EQUIPMENT CO., INC.  
105 S. 9TH AVENUE  
MAYWOOD, IL 60153  
Tel: 708-343-7738 Fax: 708-343-9065  
WWW.AVWEQUIPMENT.COM

**- COMPANY PROPRIETARY NOTE -**

THIS DRAWING AND ITS DESIGNS ARE PROPERTY OF AVW EQUIPMENT CO. &  
IT IS NOT TO BE USED OR REPRODUCED WITHOUT THE PERMISSION FROM AVW CO.

DRAWN BY

Ljubomir

CUSTOMER:

CHECKED BY

PROJECT:

QTY

DESCRIPTION: Stainless Steel Vacuum Holster

RELEASE  
DATE

1/11/2021

PART NUMBER: Vacuum Holster #1

REV# 001

DIMENSION ARE IN INCHES & PROVIDED PRIOR  
TO SURFACE TREATMENTS, UNLESS NOTED.

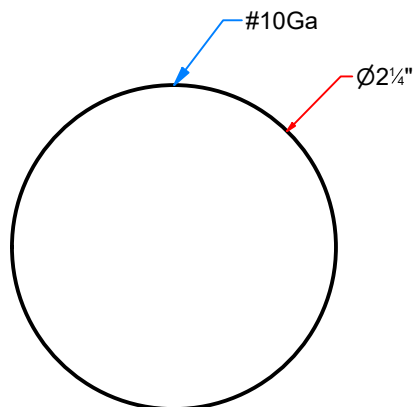
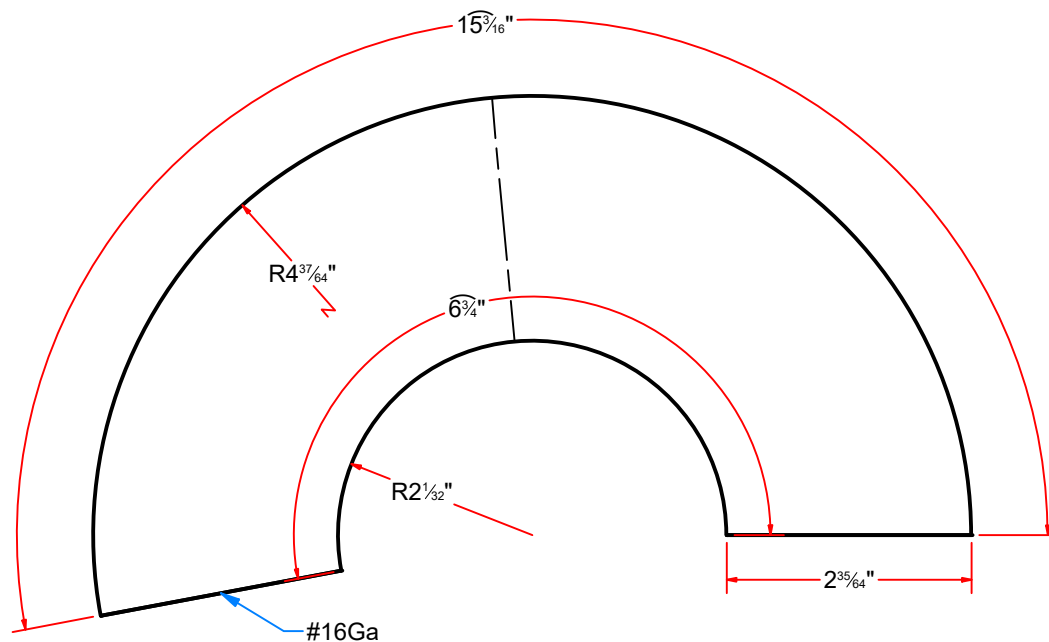
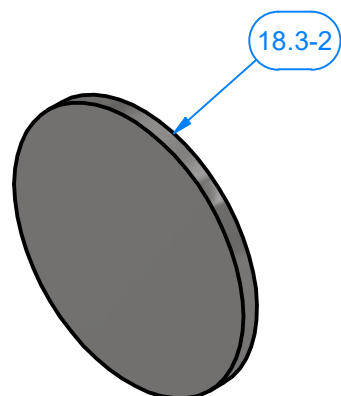
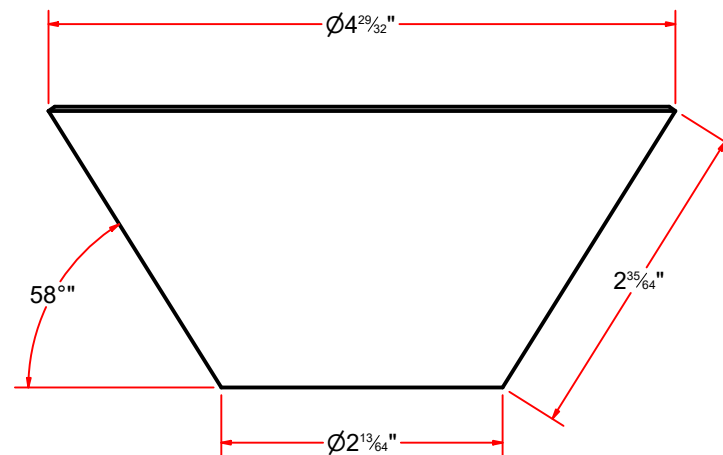
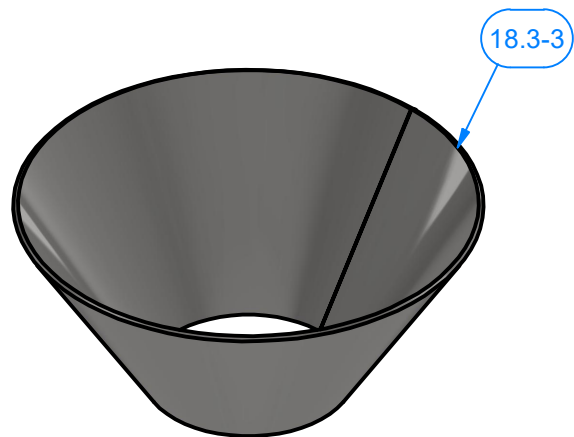
SIZE  
**A**

EST WEIGHT:

SHEET 24 of 29

PATH:L:\Designs\Product Lines\Vacuum Arches\Vacuum\SS Vacuum Holster\SS Vacuum Holster.iam





AVW EQUIPMENT CO., INC.  
105 S. 9TH AVENUE  
MAYWOOD, IL 60153  
Tel: 708-343-7738 Fax: 708-343-9065  
WWW.AVWEQUIPMENT.COM

**- COMPANY PROPRIETARY NOTE -**

THIS DRAWING AND ITS DESIGNS ARE PROPERTY OF AVW EQUIPMENT CO. & IT IS NOT TO BE USED OR REPRODUCED WITHOUT THE PERMISSION FROM AVW CO.

DRAWN BY

Ljubomir

CUSTOMER:

CHECKED BY

PROJECT:

QTY

DESCRIPTION: Cover Plate #10Ga - 2" Pipe, Sch 10

RELEASE DATE

1/11/2021

PART NUMBER: Cover Plate #10Ga - Pipe 2in Sch10

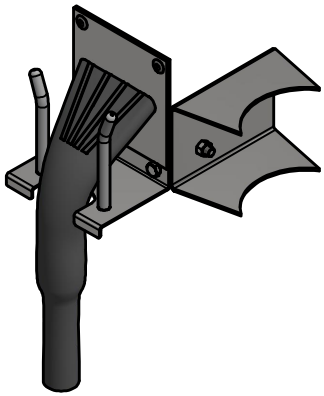
REV# 001

DIMENSION ARE IN INCHES & PROVIDED PRIOR TO SURFACE TREATMENTS, UNLESS NOTED.

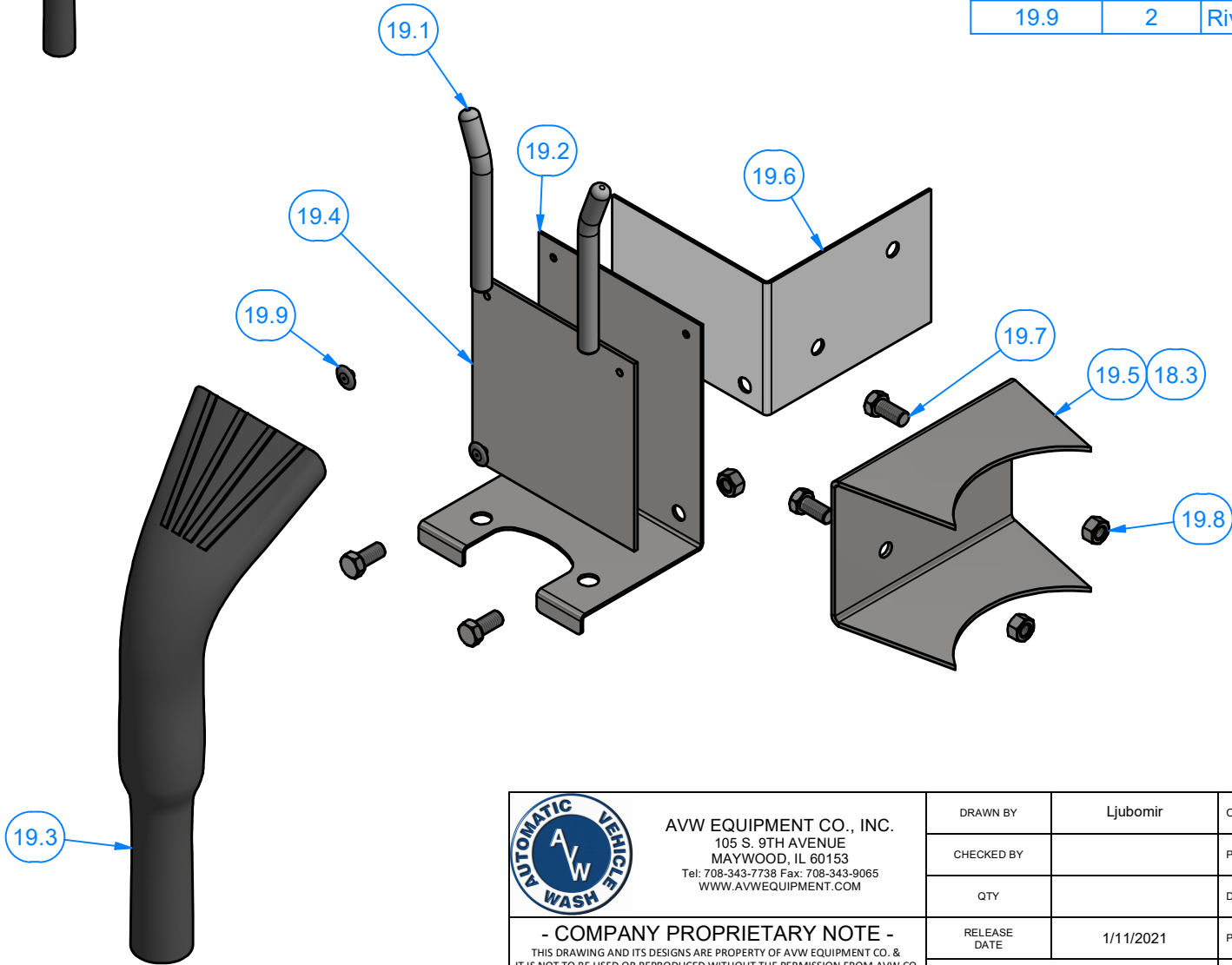
SIZE A

EST WEIGHT:

SHEET 25 of 29



Parts List		
ITEM	QTY	DESCRIPTION
19.1	2	SS Rod 1/2" dia x 5" lg.
19.2	1	14 Ga. 11" x 5 1/2"
19.3	1	Vacuum Claw Holster
19.4	1	3/32" thk. x 5 1/2" x 5 1/2" Clear Flexible Plastic
19.5	1	12 Ga. 10 3/4" x 6"
19.6	1	14 Ga. 10 11/16" x 3 7/8"
19.7	4	3/8" - 16 x 3/4" UNC Hex Screw
19.8	4	Hex Nut - 3/8-16 UNC
19.9	2	Rivet 3/16" dia x 1/4" Lg, 5/8" head dia.

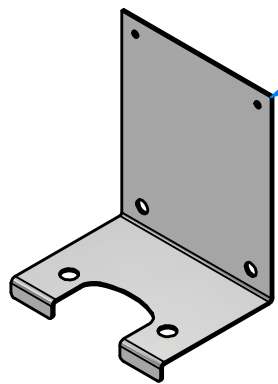


AVW EQUIPMENT CO., INC.  
105 S. 9TH AVENUE  
MAYWOOD, IL 60153  
Tel: 708-343-7738 Fax: 708-343-9065  
WWW.AVWEQUIPMENT.COM

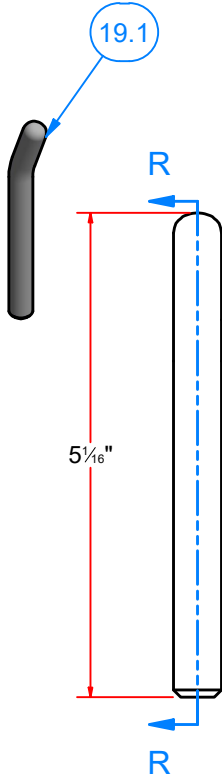
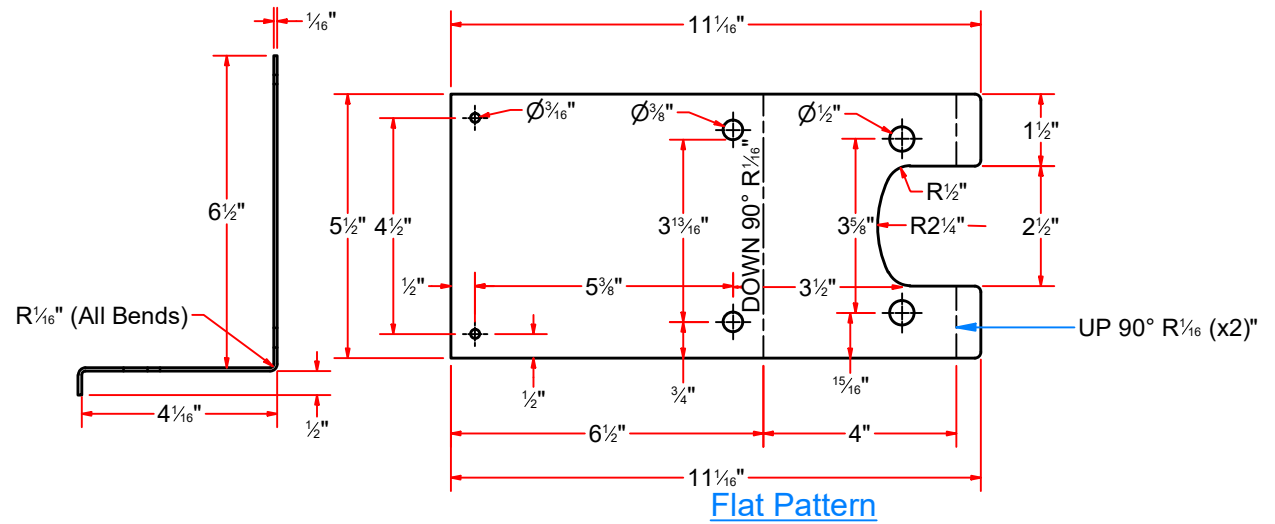
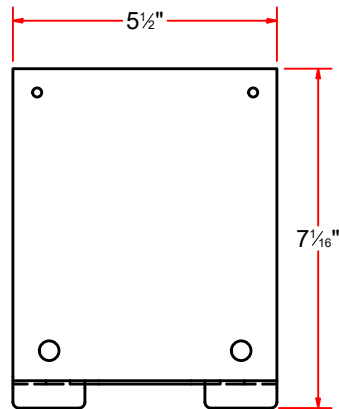
**- COMPANY PROPRIETARY NOTE -**  
THIS DRAWING AND ITS DESIGNS ARE PROPERTY OF AVW EQUIPMENT CO. &  
IT IS NOT TO BE USED OR REPRODUCED WITHOUT THE PERMISSION FROM AVW CO.

DRAWN BY	Ljubomir	CUSTOMER:	
CHECKED BY		PROJECT:	
QTY		DESCRIPTION: Vacuum Nozzle Holder Assembly	
RELEASE DATE	1/11/2021	PART NUMBER: Vacuum Nozzle Holder Assembly	4-8-19 REV# 001
DIMENSION ARE IN INCHES & PROVIDED PRIOR TO SURFACE TREATMENTS, UNLESS NOTED.		SIZE A	EST WEIGHT:
			SHEET 26 of 29

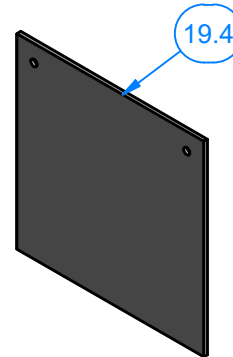
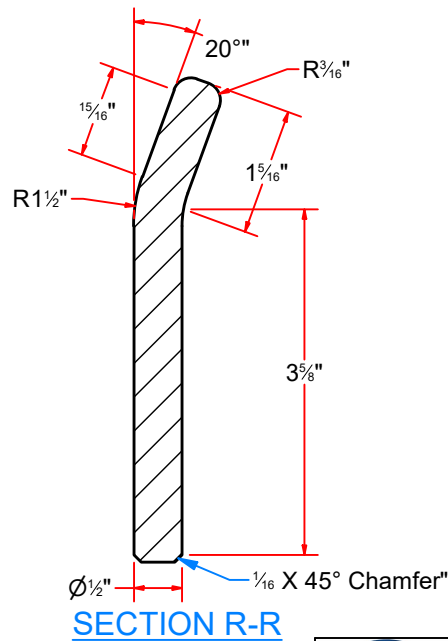
PATH:L:\Designs\Product Lines\Vacuum Arches\Vacuum\Vacuum Nozzle Holder\Vacuum Nozzle Holder Assembly 4-8-19.iam



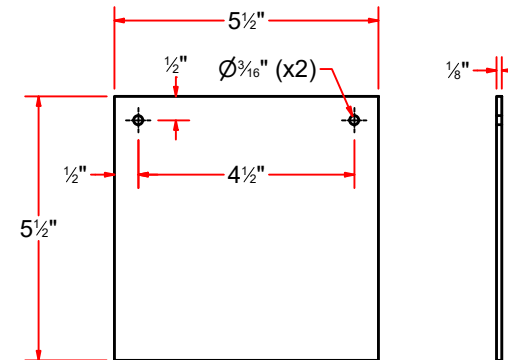
19.2



19.1



19.4



AVW EQUIPMENT CO., INC.  
105 S. 9TH AVENUE  
MAYWOOD, IL 60153  
Tel: 708-343-7738 Fax: 708-343-9065  
WWW.AVWEQUIPMENT.COM

**- COMPANY PROPRIETARY NOTE -**

THIS DRAWING AND ITS DESIGNS ARE PROPERTY OF AVW EQUIPMENT CO. & IT IS NOT TO BE USED OR REPRODUCED WITHOUT THE PERMISSION FROM AVW CO.

DRAWN BY

Ljubomir

CUSTOMER:

CHECKED BY

PROJECT:

QTY

DESCRIPTION: SS Rod 1/2" dia x 5" lg.

RELEASE DATE

1/11/2021

PART NUMBER: Vacuum Nozzle Guide Stud

REV# 001

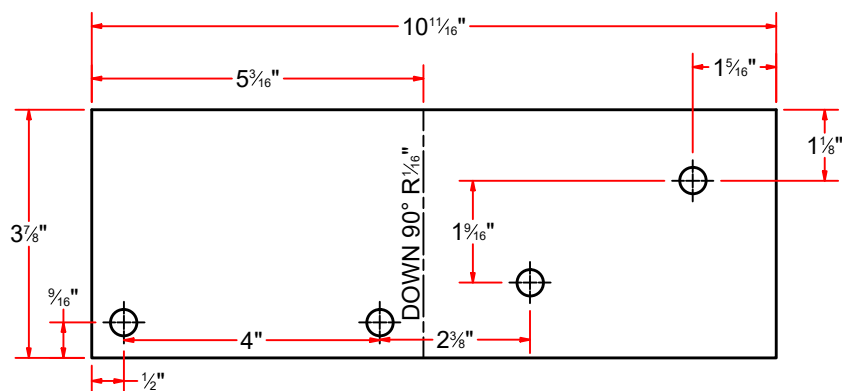
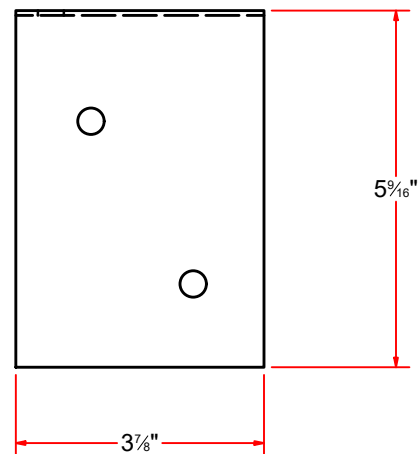
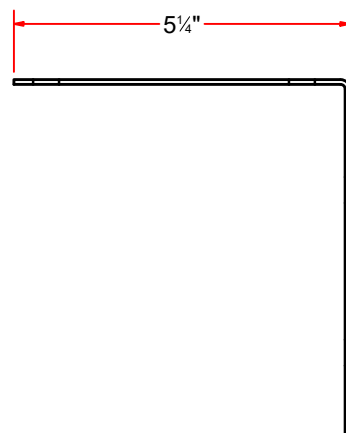
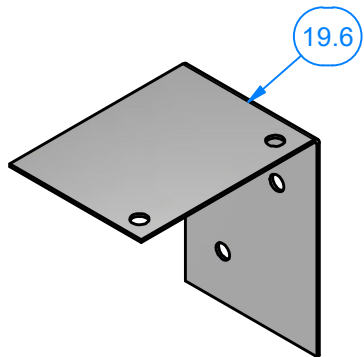
DIMENSION ARE IN INCHES & PROVIDED PRIOR TO SURFACE TREATMENTS, UNLESS NOTED.

SIZE  
A

EST WEIGHT:

SHEET 27 of 29

PATH: L:\Designs\Product Lines\Vacuum Arches\Vacuum\Vacuum Nozzle Holder\Parts\Vacuum Nozzle Guide Stud.ipt



AVW EQUIPMENT CO., INC.  
105 S. 9TH AVENUE  
MAYWOOD, IL 60153  
Tel: 708-343-7738 Fax: 708-343-9065  
WWW.AVWEQUIPMENT.COM

**- COMPANY PROPRIETARY NOTE -**

THIS DRAWING AND ITS DESIGNS ARE PROPERTY OF AVW EQUIPMENT CO. & IT IS NOT TO BE USED OR REPRODUCED WITHOUT THE PERMISSION FROM AVW CO.

DRAWN BY

Ljubomir

CUSTOMER:

CHECKED BY

PROJECT:

QTY

DESCRIPTION: 14 Ga. 10 11/16" x 3 7/8"

RELEASE  
DATE

1/11/2021

PART NUMBER: Vacuum Nozzle Holder - L bracket

REV# 001

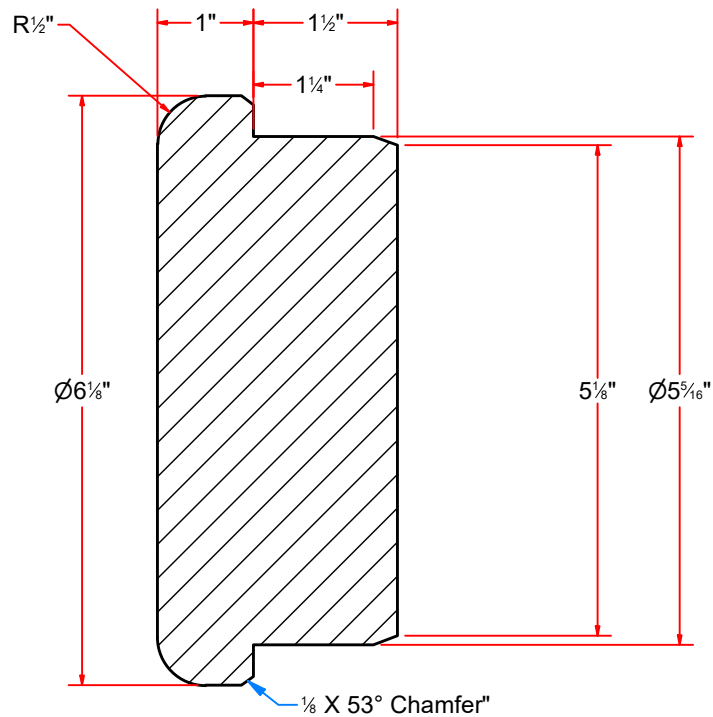
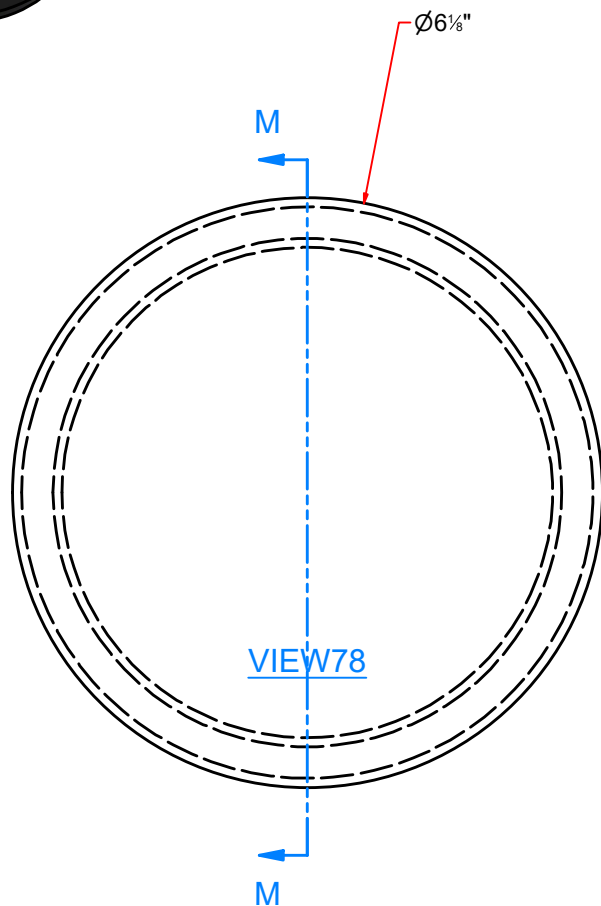
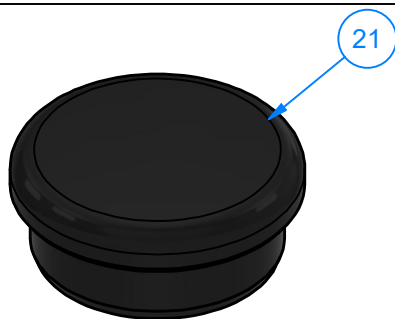
DIMENSION ARE IN INCHES & PROVIDED PRIOR  
TO SURFACE TREATMENTS, UNLESS NOTED.

SIZE  
**A**

EST WEIGHT:

SHEET 28 of 29

PATH:L:\Designs\Product Lines\Vacuum Arches\Vacuum\Vacuum Nozzle Holder\Parts\Vacuum Nozzle Holder - L bracket.ipt



**SECTION M-M**



AVW EQUIPMENT CO., INC.  
105 S. 9TH AVENUE  
MAYWOOD, IL 60153  
Tel: 708-343-7738 Fax: 708-343-9065  
WWW.AVWEQUIPMENT.COM

**- COMPANY PROPRIETARY NOTE -**

THIS DRAWING AND ITS DESIGNS ARE PROPERTY OF AVW EQUIPMENT CO. & IT IS NOT TO BE USED OR REPRODUCED WITHOUT THE PERMISSION FROM AVW CO.

DRAWN BY

Ljubomir

CUSTOMER:

CHECKED BY

PROJECT:

QTY

DESCRIPTION: R-VA2476C1 - UHMW Cap

RELEASE DATE

1/11/2021

PART NUMBER: R-VA2476C1 - UHMW Cap

REV# 001

DIMENSION ARE IN INCHES & PROVIDED PRIOR TO SURFACE TREATMENTS, UNLESS NOTED.

SIZE  
**A**

EST WEIGHT:

SHEET 29 of 29