



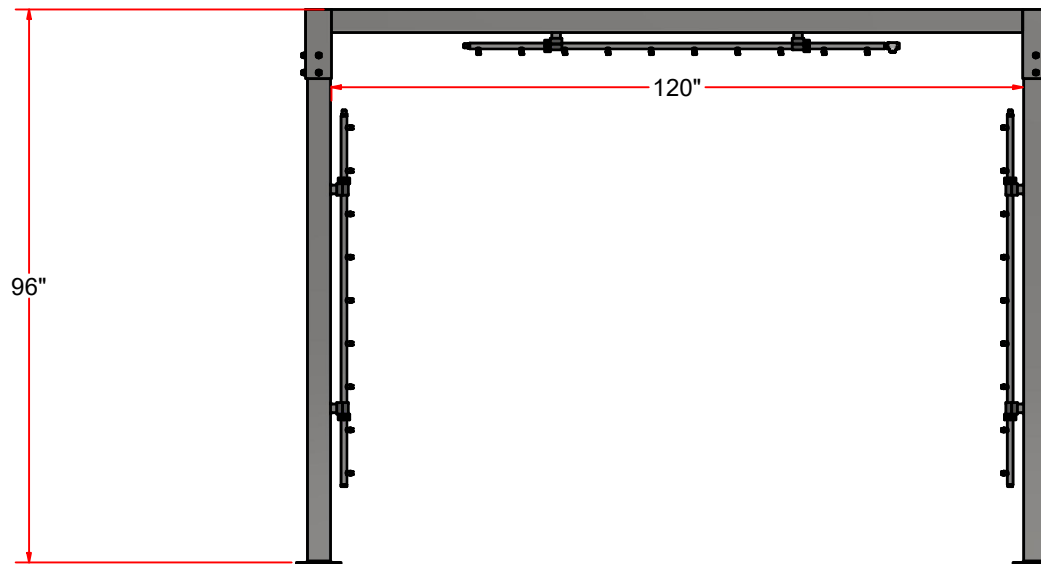
High Pressure Applicator Arch

AA1-HP1



High Pressure Applicator Arch - AA1-HP1

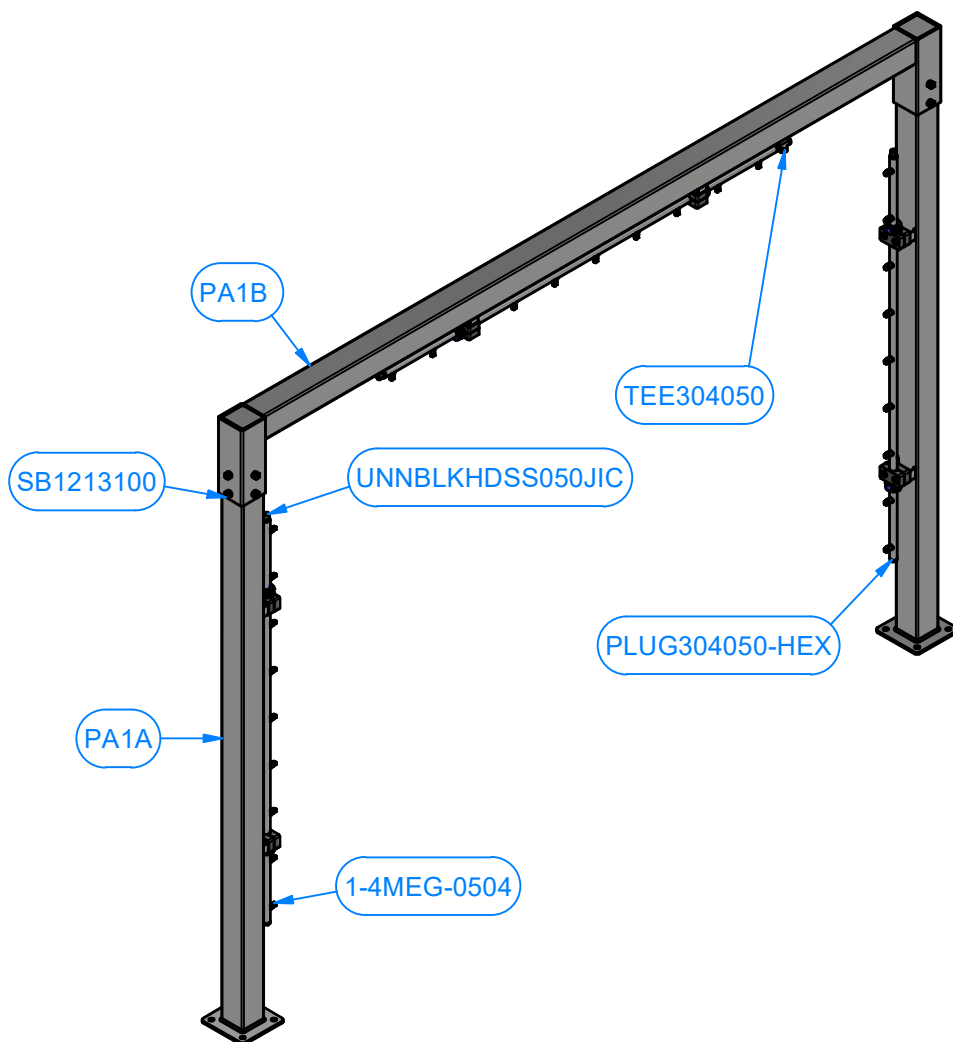
The high pressure applicator arch is fully stationary and used to apply high pressure water or chemical to the surface of a car.





High Pressure Applicator Arch - AA1-HP1

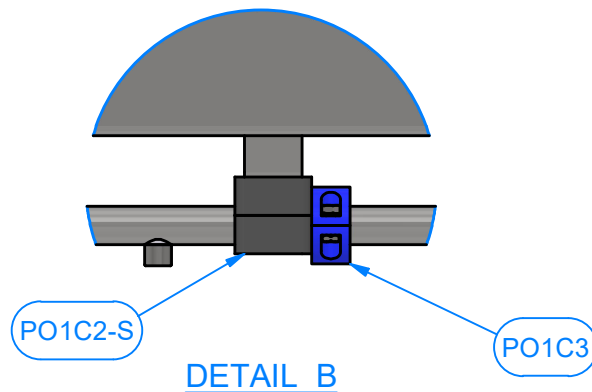
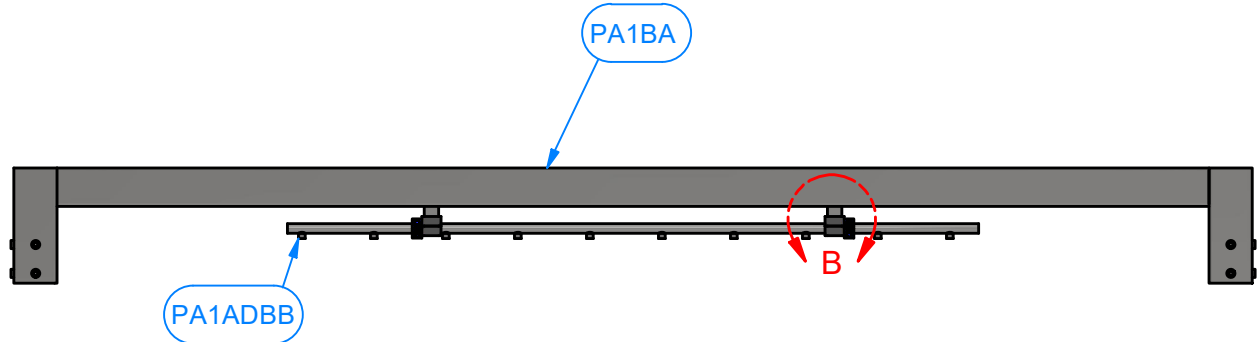
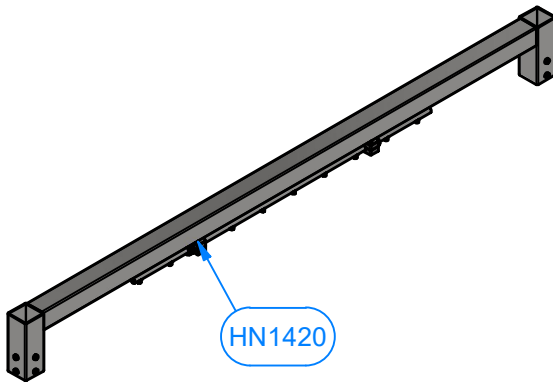
Parts List		
PART NUMBER	QTY	DESCRIPTION
PA1B	1	High Pressure Top Crossbar Assembly
PA1A	2	High Pressure Leg Assembly
1-4MEG-0504	28	NOZZLE 1/4" MNPT MEG 0504 SS
PLUG304050-HEX	2	1/2" NPT Stainless Steel Hex Head Solid Plug
UNNBLKHDSS050JIC	4	Adapter for 1/2" Tube OD x 1/2" NPT Male Pipe
TEE304050	1	Female Tee - 1/2" F-NPT x 1/2" F-NPT x 1/2" F-NPT
SB1213100	8	Square Bolt - 1/2"-13 UNC x 1"





High Pressure Top Crossbar Assembly - PA1B

Parts List		
PART NUMBER	QTY	DESCRIPTION
PA1ADBB	1	High Pressure Top Manifold
PO1C3	2	1" ID UHMW Split Collar
PA1BA	1	High Pressure Arch Top Crossbar Weldment
HN1420	4	1/4"-20 Hex Nut
PO1C2-S	2	UHMW Block - 2 Peice





High Pressure Arch Leg Assembly - PA1A

Parts List		
PART NUMBER	QTY	DESCRIPTION
PO1C3	2	1" ID UHMW Split Collar
HN1420	4	1/4"-20 Hex Nut
PA1BDBAA	1	High Pressure Side Manifold
PA1AA	1	High Pressure Arch Leg Weldment
PO1C2-S	2	UHMW Block - 2 Peice
HHCS1420250	4	1/4"-20 x 2 1/2" L Hex Screw

