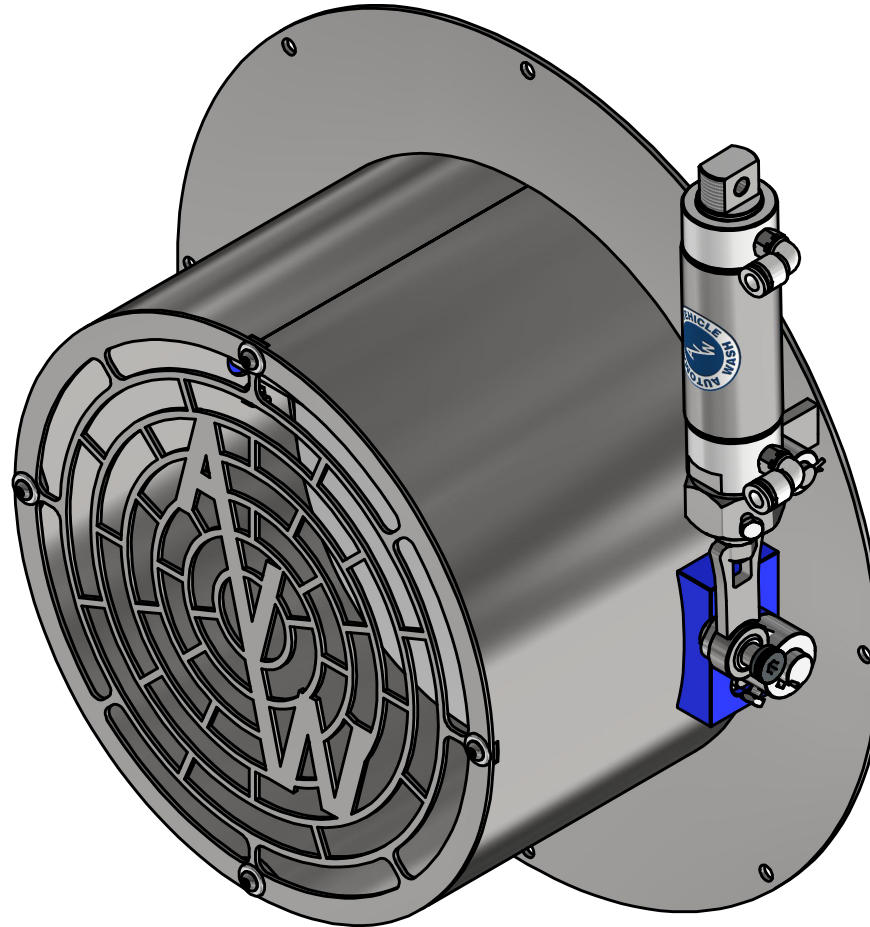


## **BL1DC-2678 - Blower Intake Gate (B.I.G)**



AVW EQUIPMENT CO., INC.  
105 S. 9TH AVENUE  
MAYWOOD, IL 60153  
Tel: 708-343-7738 Fax: 708-343-9065  
WWW.AVWEQUIPMENT.COM

**- COMPANY PROPRIETARY NOTE -**

THIS DRAWING AND ITS DESIGNS ARE PROPERTY OF AVW EQUIPMENT CO. &  
IT IS NOT TO BE USED OR REPRODUCED WITHOUT THE PERMISSION FROM AVW CO.

DRAWN BY

Jibin

CUSTOMER: AVW EQUIPMENT CO.

CHECKED BY

PROJECT: BL1DC-2678\_Air Intake Regulating Gate Assembly

QTY

DESCRIPTION: Blower Intake Gate (B.I.G)

RELEASE  
DATE

9/23/2021

PART NUMBER: BL1DC-2678

REV# 1

DIMENSION ARE IN INCHES & PROVIDED PRIOR  
TO SURFACE TREATMENTS, UNLESS NOTED.

SIZE  
A

EST WEIGHT:

SHEET 1 of 28

PATH: L:\Designs\Product Lines\Blower\BL1DC-2678 - Air Intake Regulating Gate\BL1DC-2678\_Blower Intake Gate.iam

# REVISION HISTORY

ECO No.	REV	DESCRIPTION	DATE	ENGINEER	APPROVED
	1	INITIAL RELEASE	01/25/2022	JIBIN	
	1				



AVW EQUIPMENT CO., INC.  
105 S. 9TH AVENUE  
MAYWOOD, IL 60153  
Tel: 708-343-7738 Fax: 708-343-9065  
WWW.AVWEQUIPMENT.COM

DRAWN BY

Jibin

CUSTOMER: AVW EQUIPMENT CO.

CHECKED BY

PROJECT: BL1DC-2678\_Air Intake Regulating Gate Assembly

QTY

DESCRIPTION:

## - COMPANY PROPRIETARY NOTE -

THIS DRAWING AND ITS DESIGNS ARE PROPERTY OF AVW EQUIPMENT CO. &  
IT IS NOT TO BE USED OR REPRODUCED WITHOUT THE PERMISSION FROM AVW CO.

RELEASE  
DATE

9/23/2021

PART NUMBER:

REV# 1

DIMENSION ARE IN INCHES & PROVIDED PRIOR  
TO SURFACE TREATMENTS, UNLESS NOTED.

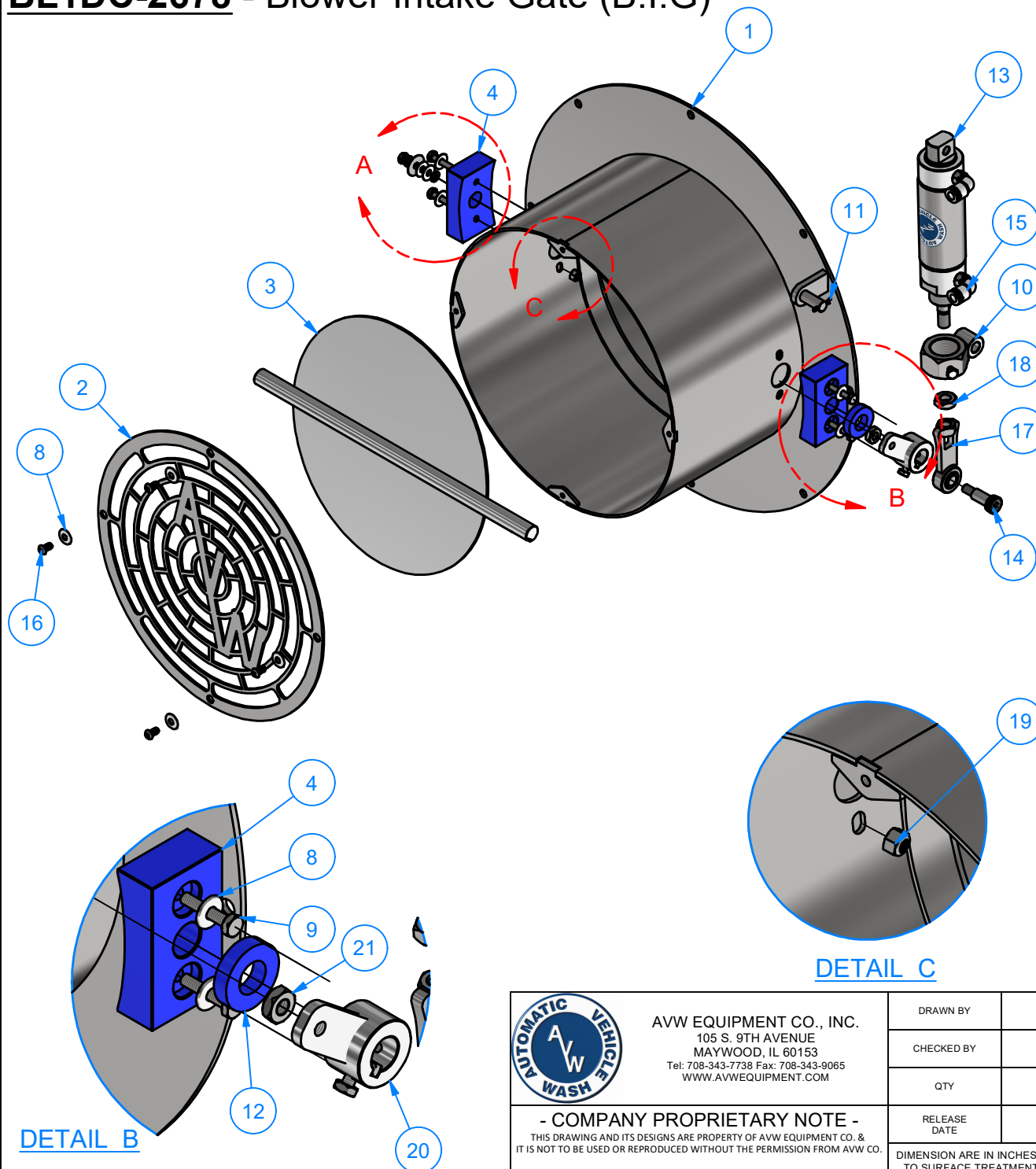
SIZE  
A

EST WEIGHT:

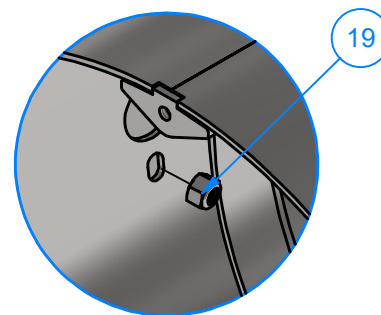
SHEET 2 of 28

PATH:

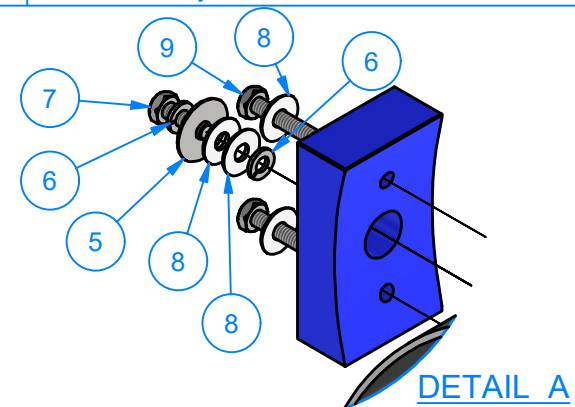
# BL1DC-2678 - Blower Intake Gate (B.I.G)



Parts List		
ITEM	QTY	DESCRIPTION
1	1	Air Intake Weld Sub Assy.
2	1	Gate with Logo #12Ga x 14" O.D.
3	1	Air Gate Valve Sub Assy.
4	2	3 1/2"x2"x1" UHMW BRACKET
5	1	1/4" W Flat Washer
6	2	1/4" Split Lock Washer
7	1	1/4"-20 x 3/4" Hex Screw
8	10	1/4" Flat Washer
9	4	1/4" - 20 UNC x 1.25" HEX SCREW
10	1	Cylinder Mount Bracket
11	1	Cotter Pin_ 3/32 x 3/4 Square Cut type
12	1	UHMW Spacer 3/4" IDx 1 1/2" OD
13	1	Air Cylinder 2" x 3"
14	1	Shoulder Bolt: 1/2"D x 1" LGx 3/8"-16 Thread
15	2	3/8"x1/4"MNPT Elbow Air Push Fitting
16	4	Button Head Cap Screw 1/4-20 x 1/2" LG.
17	1	Ball Joint End Rod
18	1	1/2"-20 Heavy Hex Jam Nut
19	4	Nylon Lock Nut 1/4"-20
20	1	Blower Cam Arm Assy.
21	1	3/8"-16 Heavy Hex Jam Nut



DETAIL C



DETAIL A



AVW EQUIPMENT CO., INC.  
105 S. 9TH AVENUE  
MAYWOOD, IL 60153  
Tel: 708-343-7738 Fax: 708-343-9065  
WWW.AVWEQUIPMENT.COM

## - COMPANY PROPRIETARY NOTE -

THIS DRAWING AND ITS DESIGNS ARE PROPERTY OF AVW EQUIPMENT CO. & IT IS NOT TO BE USED OR REPRODUCED WITHOUT THE PERMISSION FROM AVW CO.

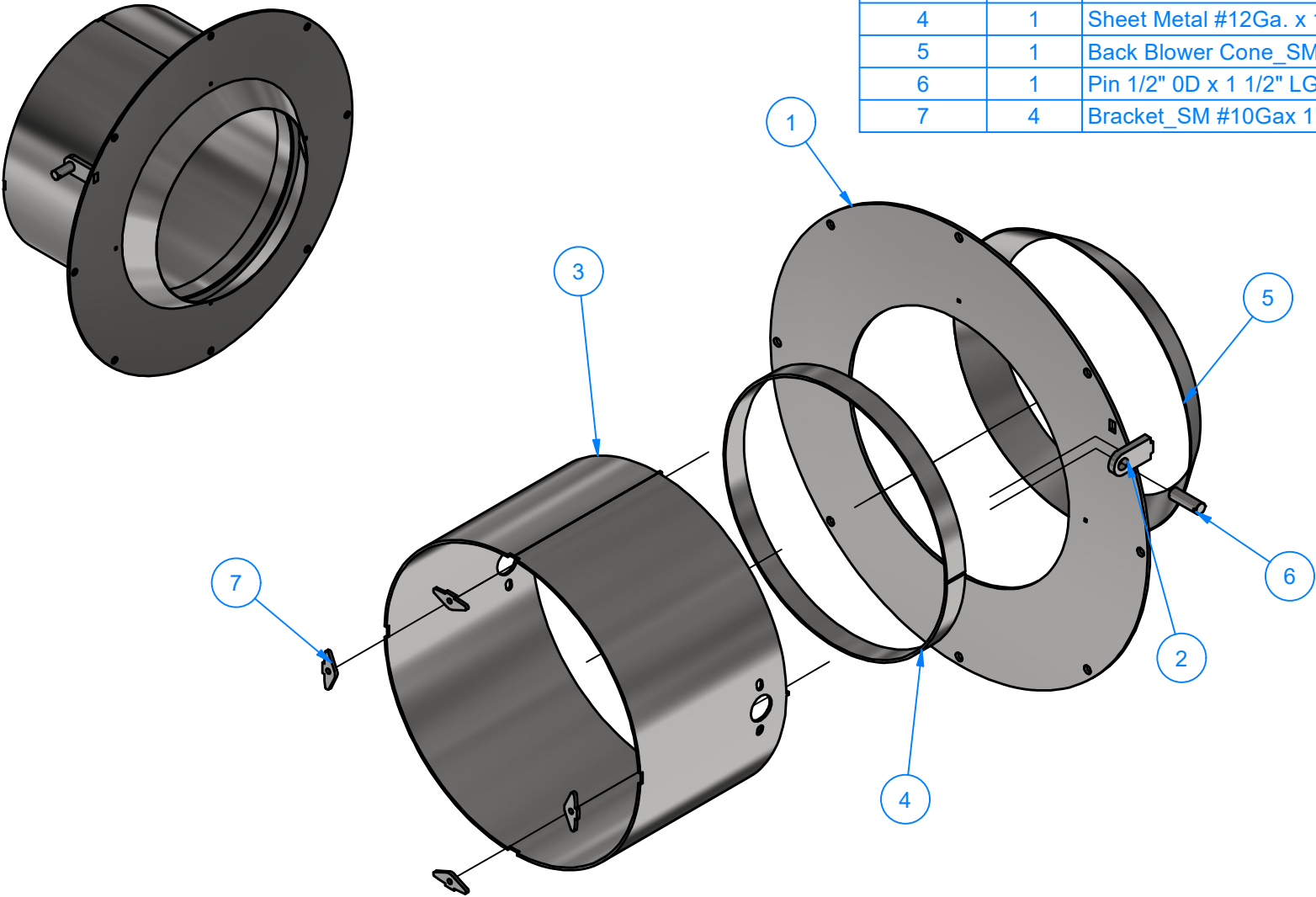
DRAWN BY	Jibin	CUSTOMER: AVW EQUIPMENT CO.	
CHECKED BY		PROJECT: BL1DC-2678_Air Intake Regulating Gate Assembly	
QTY		DESCRIPTION: Blower Intake Gate (B.I.G)	
RELEASE DATE	9/23/2021	PART NUMBER: BL1DC-2678	REV# 1
DIMENSION ARE IN INCHES & PROVIDED PRIOR TO SURFACE TREATMENTS, UNLESS NOTED.		SIZE A	EST WEIGHT:
			SHEET 3 of 28

PATH:L:\Designs\Product Lines\Blower\BL1DC-2678 - Air Intake Regulating Gate\BL1DC-2678\_Blower Intake Gate.iam

**BL1DCA-2678 - Air Intake Weld Sub Assy.**

Parts List

ITEM	QTY	DESCRIPTION
1	1	Blower Back Plate - #10Ga 20 5_8 in OD
2	1	Back Plate Post #5/16"x2 1/8"x1"
3	1	Side Ring Sheet Metal #12Gax 8 1/8"x 43 1/2"
4	1	Sheet Metal #12Ga. x 1" x 38 3/8" LG.
5	1	Back Blower Cone_SM #18Gax 11 3/4" ODx 10" ID
6	1	Pin 1/2" OD x 1 1/2" LG.
7	4	Bracket_SM #10Gax 1 7/8"x 3/4"

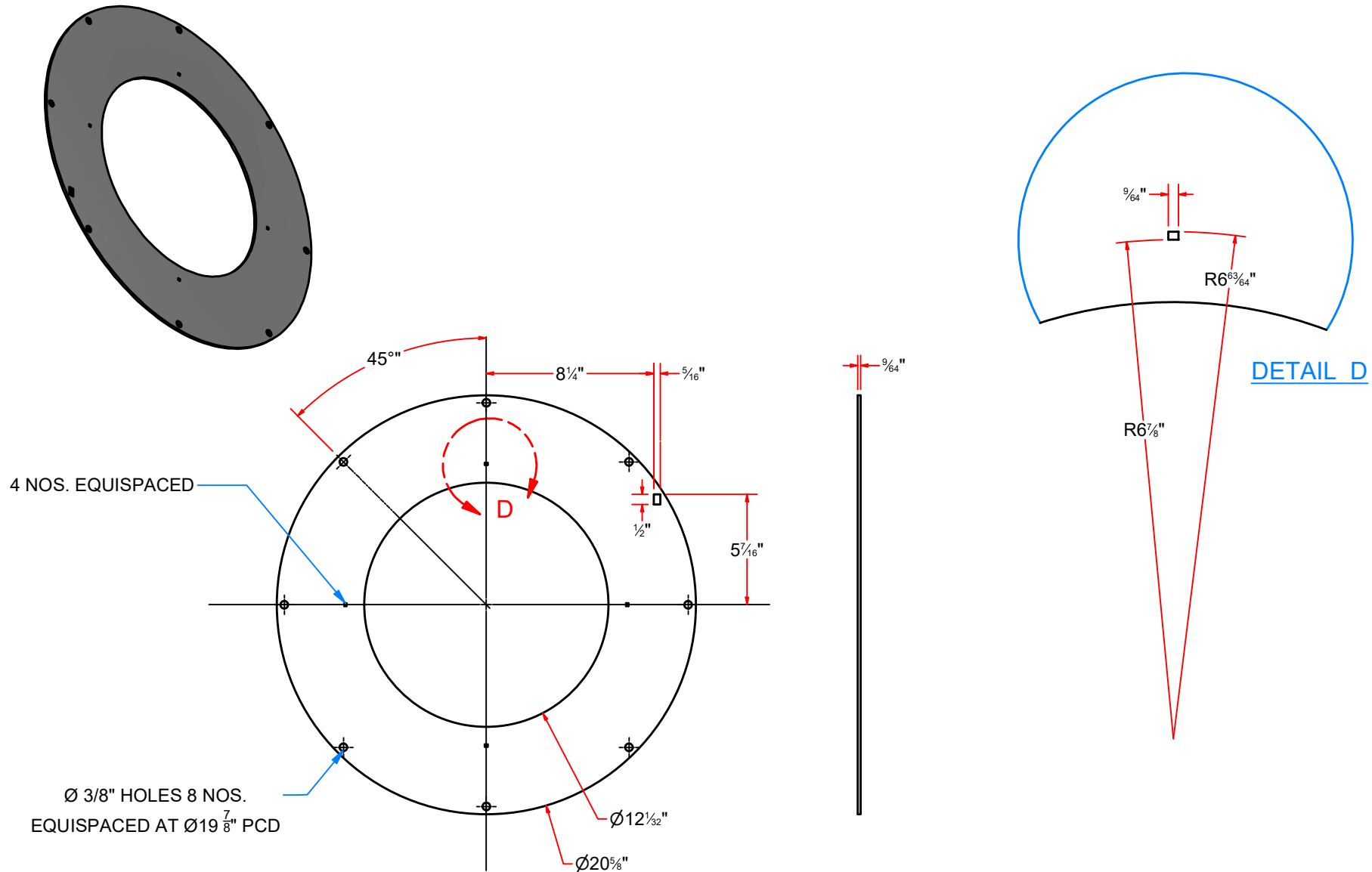


AVW EQUIPMENT CO., INC.  
105 S. 9TH AVENUE  
MAYWOOD, IL 60153  
Tel: 708-343-7738 Fax: 708-343-9065  
WWW.AVWEQUIPMENT.COM

**- COMPANY PROPRIETARY NOTE -**  
THIS DRAWING AND ITS DESIGNS ARE PROPERTY OF AVW EQUIPMENT CO. &  
IT IS NOT TO BE USED OR REPRODUCED WITHOUT THE PERMISSION FROM AVW CO.

DRAWN BY	Jibin	CUSTOMER: AVW EQUIPMENT CO.	
CHECKED BY		PROJECT: BL1DC-2678_Air Intake Regulating Gate Assembly	
QTY		DESCRIPTION: Air Intake Weld Sub Assy.	
RELEASE DATE	9/23/2021	PART NUMBER: BL1DCA-2678	REV# 1
DIMENSION ARE IN INCHES & PROVIDED PRIOR TO SURFACE TREATMENTS, UNLESS NOTED.		SIZE A	EST WEIGHT: SHEET 4 of 28

# BL1DCAA-2678 - Blower Back Plate - #10Ga 20 5\_8 in OD



AVW EQUIPMENT CO., INC.  
105 S. 9TH AVENUE  
MAYWOOD, IL 60153  
Tel: 708-343-7738 Fax: 708-343-9065  
WWW.AVWEQUIPMENT.COM

## - COMPANY PROPRIETARY NOTE -

THIS DRAWING AND ITS DESIGNS ARE PROPERTY OF AVW EQUIPMENT CO. &  
IT IS NOT TO BE USED OR REPRODUCED WITHOUT THE PERMISSION FROM AVW CO.

DRAWN BY

Jibin

CUSTOMER: AVW EQUIPMENT CO.

CHECKED BY

PROJECT: BL1DC-2678\_Air Intake Regulating Gate Assembly

QTY

DESCRIPTION: Blower Back Plate - #10Ga 20 5\_8 in OD

RELEASE  
DATE

9/23/2021

PART NUMBER: BL1DCAA-2678

REV# 1

DIMENSION ARE IN INCHES & PROVIDED PRIOR  
TO SURFACE TREATMENTS, UNLESS NOTED.

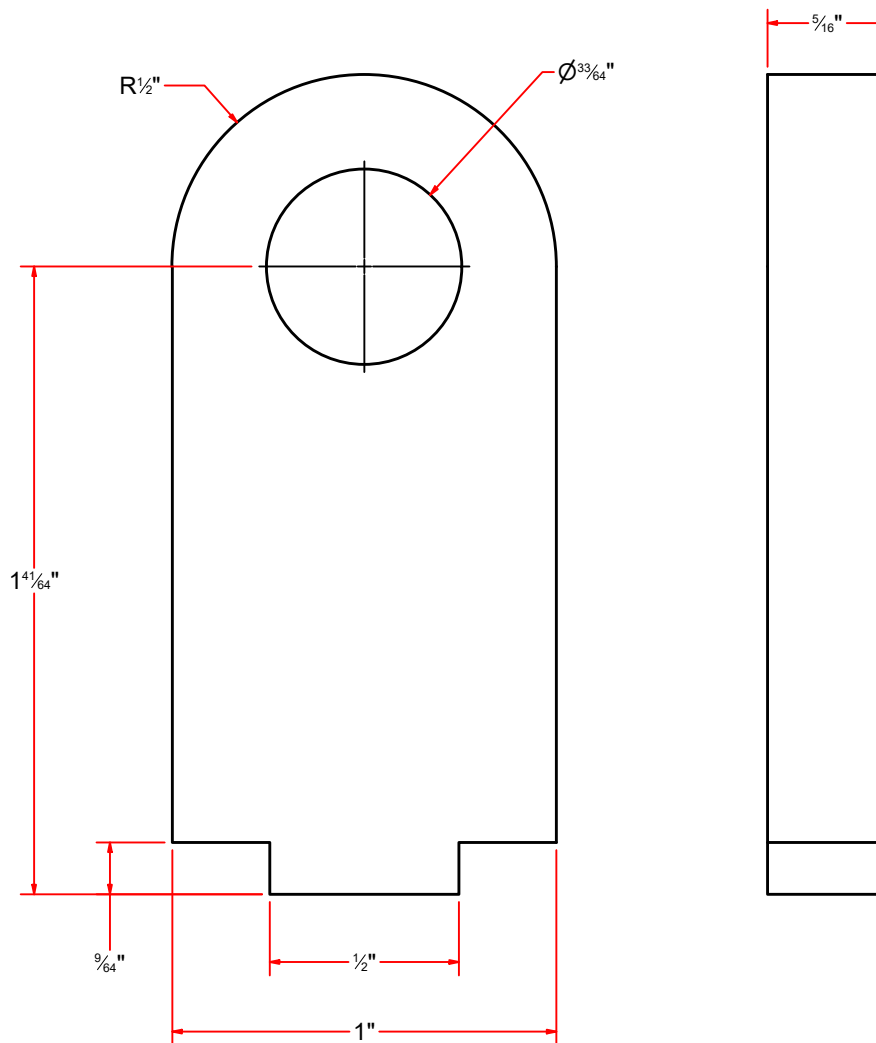
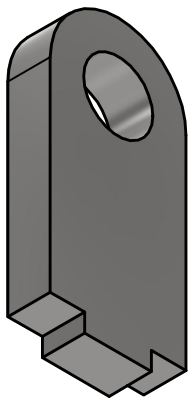
SIZE  
A

EST WEIGHT:

SHEET 5 of 28

PATH:L:\Designs\Product Lines\Blower\BL1DC-2678 - Air Intake Regulating Gate\Parts\BL1DC-2678\_Blower Back Plate - #10Ga 20 5\_8 in OD.ipt

**BL1DCAB-2678 - Back Plate Post #5/16"x2 1/8"x1"**



AVW EQUIPMENT CO., INC.  
105 S. 9TH AVENUE  
MAYWOOD, IL 60153  
Tel: 708-343-7738 Fax: 708-343-9065  
WWW.AVWEQUIPMENT.COM

**- COMPANY PROPRIETARY NOTE -**  
THIS DRAWING AND ITS DESIGNS ARE PROPERTY OF AVW EQUIPMENT CO. &  
IT IS NOT TO BE USED OR REPRODUCED WITHOUT THE PERMISSION FROM AVW CO.

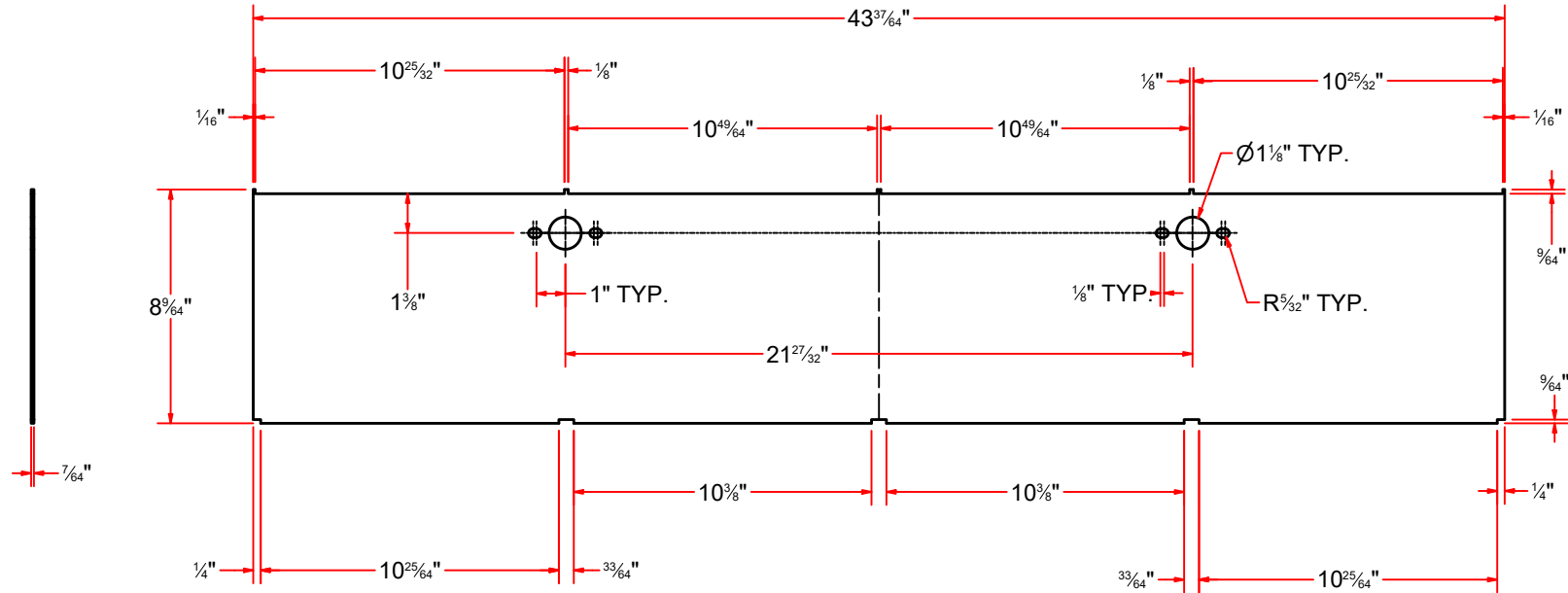
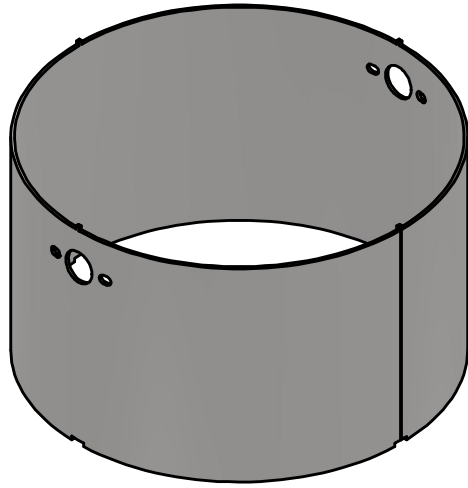
RELEASE DATE: 9/23/2021

DIMENSION ARE IN INCHES & PROVIDED PRIOR TO SURFACE TREATMENTS, UNLESS NOTED.

PATH:L:\Designs\Product Lines\Blower\BL1DC-2678 - Air Intake Regulating Gate\Parts\BL1DC-2678\_Plate.ipt

DRAWN BY	Jibin	CUSTOMER: AVW EQUIPMENT CO.	
CHECKED BY		PROJECT: BL1DC-2678_Air Intake Regulating Gate Assembly	
QTY		DESCRIPTION: Back Plate Post #5/16"x2 1/8"x1"	
RELEASE DATE	9/23/2021	PART NUMBER: BL1DCAB-2678	REV# 1
SIZE A		EST WEIGHT:	SHEET 6 of 28

# BL1DCAC-2678 - Side Ring Sheet Metal #12Gax 8 1/8"x 43 1/2"



AVW EQUIPMENT CO., INC.  
105 S. 9TH AVENUE  
MAYWOOD, IL 60153  
Tel: 708-343-7738 Fax: 708-343-9065  
WWW.AVWEQUIPMENT.COM

## - COMPANY PROPRIETARY NOTE -

THIS DRAWING AND ITS DESIGNS ARE PROPERTY OF AVW EQUIPMENT CO. & IT IS NOT TO BE USED OR REPRODUCED WITHOUT THE PERMISSION FROM AVW CO.

DRAWN BY

Jibin

CUSTOMER: AVW EQUIPMENT CO.

CHECKED BY

PROJECT: BL1DC-2678\_Air Intake Regulating Gate Assembly

QTY

DESCRIPTION: Side Ring Sheet Metal #12Gax 8 1/8"x 43 1/2"

RELEASE DATE

9/23/2021

PART NUMBER: BL1DCAC-2678

REV# 1

DIMENSION ARE IN INCHES & PROVIDED PRIOR TO SURFACE TREATMENTS, UNLESS NOTED.

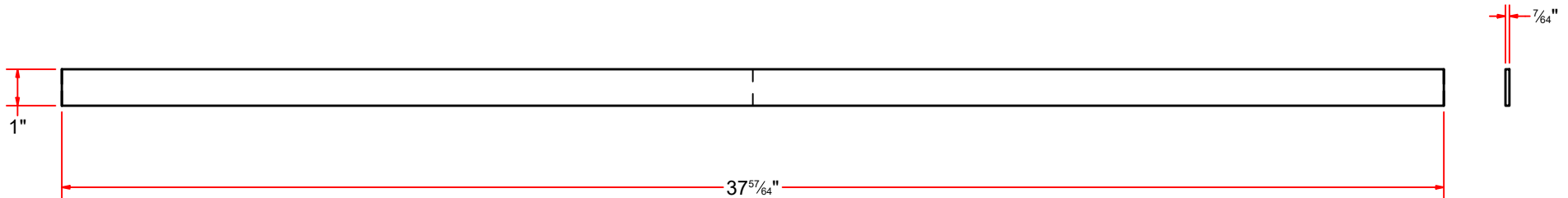
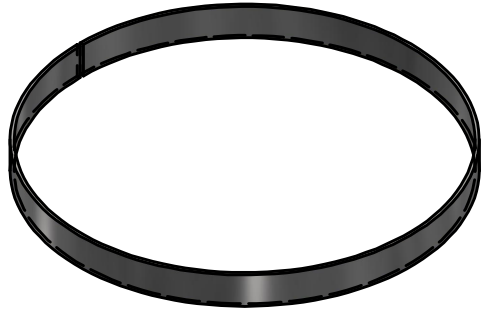
SIZE A

EST WEIGHT:

SHEET 7 of 28

PATH:L:\Designs\Product Lines\Blower\BL1DC-2678 - Air Intake Regulating Gate\Parts\BL1DC-2678\_Side Ring - #12Ga x 14in OD.ipt

**BL1DCAD-2678** - Sheet Metal #12Ga. x 1" x 38 3/8" LG.



AVW EQUIPMENT CO., INC.  
105 S. 9TH AVENUE  
MAYWOOD, IL 60153  
Tel: 708-343-7738 Fax: 708-343-9065  
WWW.AVWEQUIPMENT.COM

**- COMPANY PROPRIETARY NOTE -**

THIS DRAWING AND ITS DESIGNS ARE PROPERTY OF AVW EQUIPMENT CO. &  
IT IS NOT TO BE USED OR REPRODUCED WITHOUT THE PERMISSION FROM AVW CO.

DRAWN BY

Jibin

CUSTOMER: AVW EQUIPMENT CO.

CHECKED BY

PROJECT: BL1DC-2678\_Air Intake Regulating Gate Assembly

QTY

DESCRIPTION: Sheet Metal #12Ga. x 1" x 38 3/8" LG.

RELEASE  
DATE

9/23/2021

PART NUMBER: BL1DCAD-2678

REV# 1

DIMENSION ARE IN INCHES & PROVIDED PRIOR  
TO SURFACE TREATMENTS, UNLESS NOTED.

SIZE  
**A**

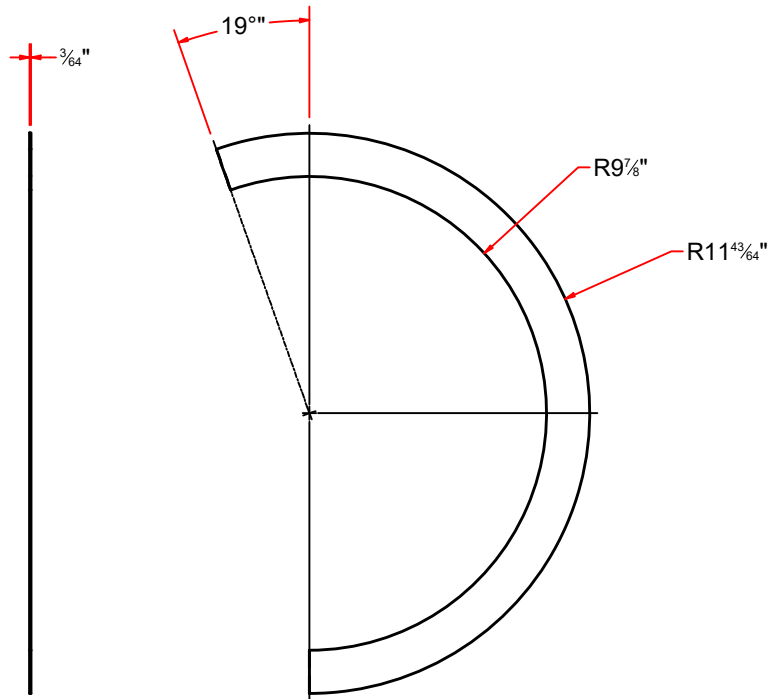
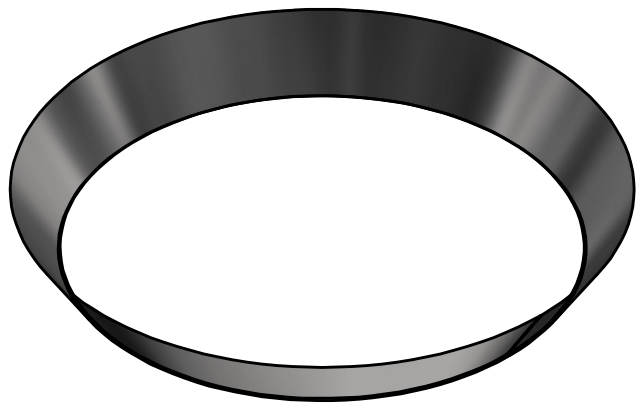
EST WEIGHT:

SHEET 8 of 28

PATH:L:\Designs\Product Lines\Blower\BL1DC-2678 - Air Intake Regulating Gate\Parts\BL1DC-2678\_Inside Ring - #10Ga x 12in OD.ipt



BL1DCAE-2678 - Back Blower Cone\_SM #18Gax 11 3/4" ODx 10" ID

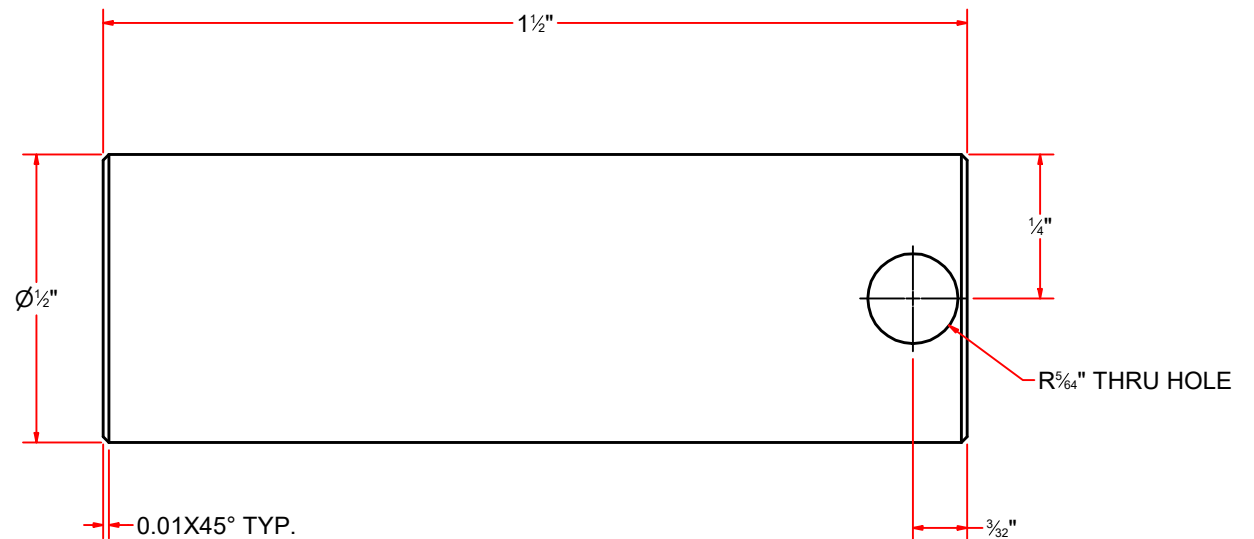
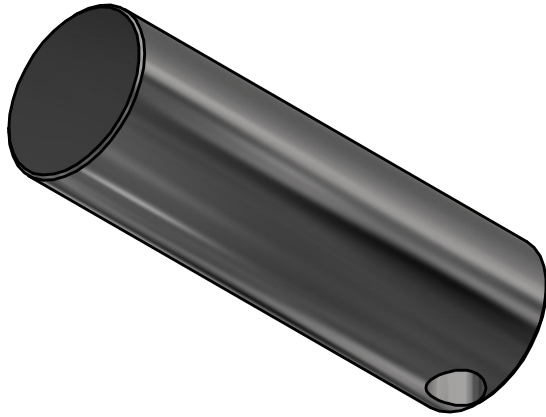



AVW EQUIPMENT CO., INC.  
105 S. 9TH AVENUE  
MAYWOOD, IL 60153  
Tel: 708-343-7738 Fax: 708-343-9065  
WWW.AVWEQUIPMENT.COM

- COMPANY PROPRIETARY NOTE -  
THIS DRAWING AND ITS DESIGNS ARE PROPERTY OF AVW EQUIPMENT CO. &  
IT IS NOT TO BE USED OR REPRODUCED WITHOUT THE PERMISSION FROM AVW CO.

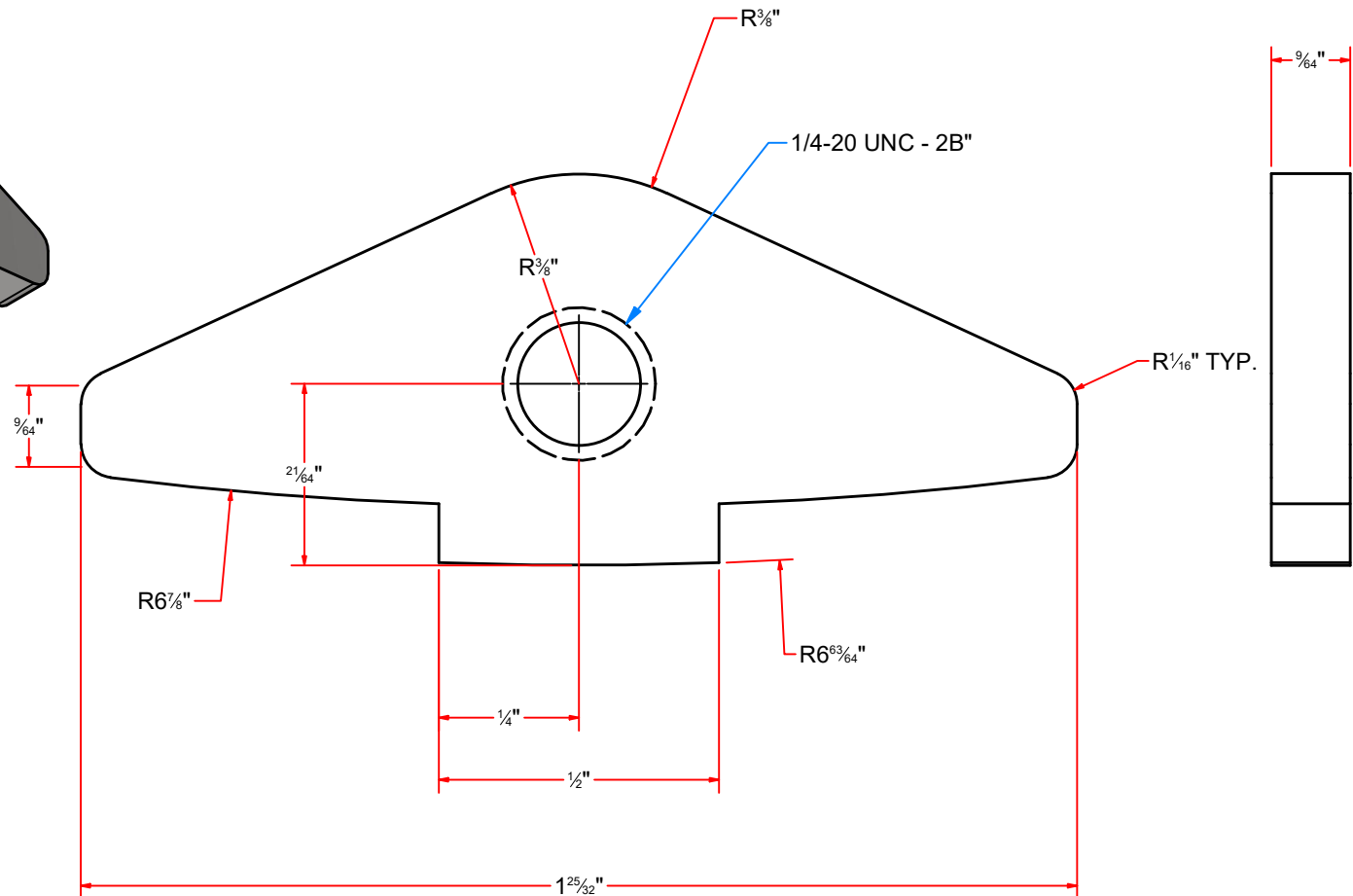
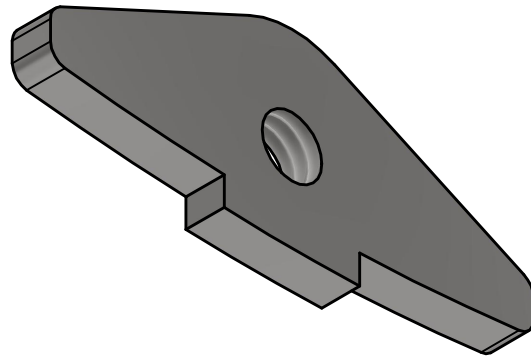
DRAWN BY	Jibin	CUSTOMER: AVW EQUIPMENT CO.	
CHECKED BY		PROJECT: BL1DC-2678_Air Intake Regulating Gate Assembly	
QTY		DESCRIPTION: Back Blower Cone_SM #18Gax 11 3/4" ODx 10" ID	
RELEASE DATE	9/23/2021	PART NUMBER: BL1DCAE-2678	REV# 1
DIMENSION ARE IN INCHES & PROVIDED PRIOR TO SURFACE TREATMENTS, UNLESS NOTED.		SIZE A	EST WEIGHT:
			SHEET 9 of 28

# BL1DCAF-2678 - Pin 1/2" OD x 1 1/2" LG.



 <div>AVW EQUIPMENT CO., INC. 105 S. 9TH AVENUE MAYWOOD, IL 60153 Tel: 708-343-7738 Fax: 708-343-9065 WWW.AVWEQUIPMENT.COM</div>	DRAWN BY	Jibin	CUSTOMER: AVW EQUIPMENT CO.		
	CHECKED BY		PROJECT: BL1DC-2678_Air Intake Regulating Gate Assembly		
	QTY		DESCRIPTION: Pin 1/2" OD x 1 1/2" LG.		
<b>- COMPANY PROPRIETARY NOTE -</b> THIS DRAWING AND ITS DESIGNS ARE PROPERTY OF AVW EQUIPMENT CO. & IT IS NOT TO BE USED OR REPRODUCED WITHOUT THE PERMISSION FROM AVW CO.	RELEASE DATE	9/23/2021	PART NUMBER: BL1DCAF-2678		REV# 1
	DIMENSION ARE IN INCHES & PROVIDED PRIOR TO SURFACE TREATMENTS, UNLESS NOTED.		SIZE A	EST WEIGHT:	SHEET 10 of 28
PATH:L:\Designs\Product Lines\Blower\BL1DC-2678 - Air Intake Regulating Gate\Parts\BL1DC-2678_Shift_02.ipt					

# BL1DCAG-2678 - Bracket\_SM #10Gax 1 7/8"x 3/4"



AVW EQUIPMENT CO., INC.  
105 S. 9TH AVENUE  
MAYWOOD, IL 60153  
Tel: 708-343-7738 Fax: 708-343-9065  
WWW.AVWEQUIPMENT.COM

## - COMPANY PROPRIETARY NOTE -

THIS DRAWING AND ITS DESIGNS ARE PROPERTY OF AVW EQUIPMENT CO. & IT IS NOT TO BE USED OR REPRODUCED WITHOUT THE PERMISSION FROM AVW CO.

DRAWN BY

Jibin

CUSTOMER: AVW EQUIPMENT CO.

CHECKED BY

PROJECT: BL1DC-2678\_Air Intake Regulating Gate Assembly

QTY

DESCRIPTION: Bracket\_SM #10Gax 1 7/8"x 3/4"

RELEASE DATE

9/23/2021

PART NUMBER: BL1DCAG-2678

REV# 1

DIMENSION ARE IN INCHES & PROVIDED PRIOR TO SURFACE TREATMENTS, UNLESS NOTED.

SIZE A

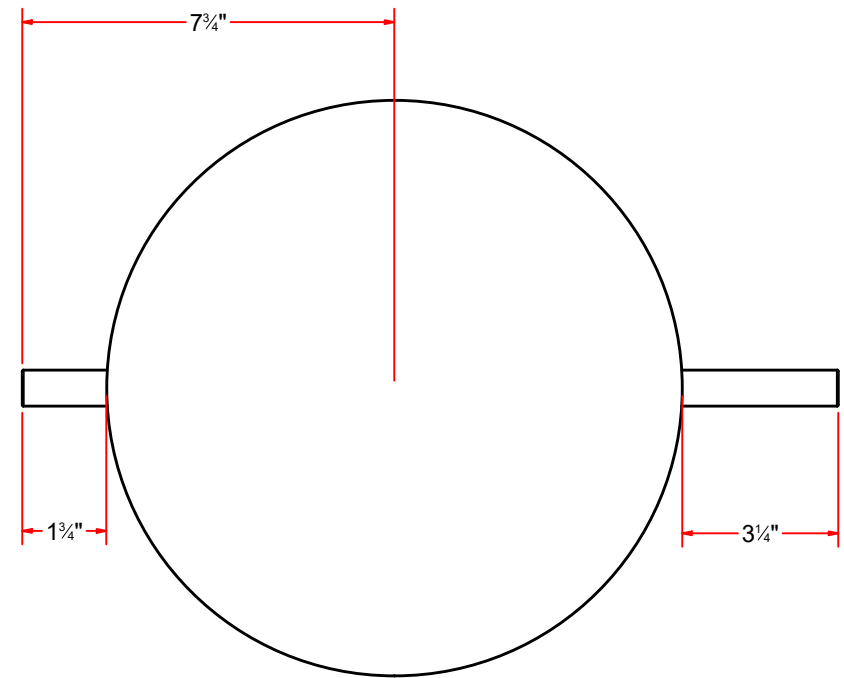
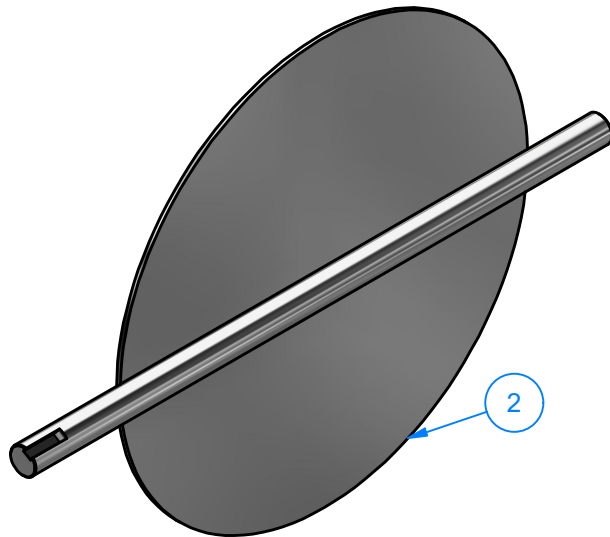
EST WEIGHT:

SHEET 11 of 28

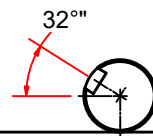
PATH:L:\Designs\Product Lines\Blower\BL1DC-2678 - Air Intake Regulating Gate\Parts\BL1DC-2678\_Fixture.ipt

# BL1DCB-2678 - Air Gate Valve Sub Assy.

Parts List		
ITEM	QTY	DESCRIPTION
1	1	Round Bar 3/4" O.D. x 17" LG.
2	1	Sheet Metal #10Ga. x 12" O.D.



VIEW26



VIEW27



AVW EQUIPMENT CO., INC.  
105 S. 9TH AVENUE  
MAYWOOD, IL 60153  
Tel: 708-343-7738 Fax: 708-343-9065  
WWW.AVWEQUIPMENT.COM

## - COMPANY PROPRIETARY NOTE -

THIS DRAWING AND ITS DESIGNS ARE PROPERTY OF AVW EQUIPMENT CO. & IT IS NOT TO BE USED OR REPRODUCED WITHOUT THE PERMISSION FROM AVW CO.

DRAWN BY

Jibin

CUSTOMER: AVW EQUIPMENT CO.

CHECKED BY

PROJECT: BL1DC-2678\_Air Intake Regulating Gate Assembly

QTY

DESCRIPTION: Air Gate Valve Sub Assy.

RELEASE DATE

9/23/2021

PART NUMBER: BL1DCB-2678

REV# 1

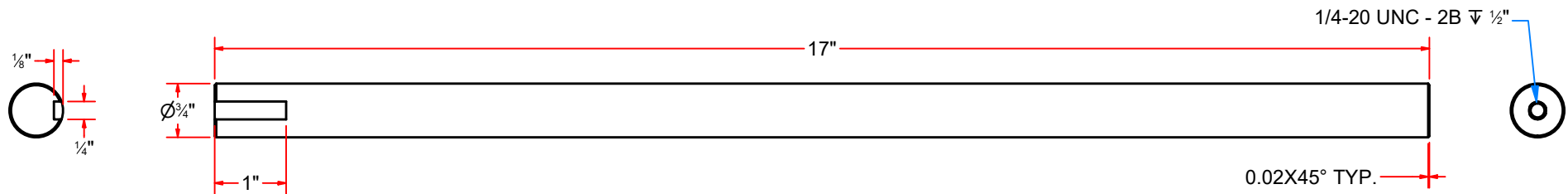
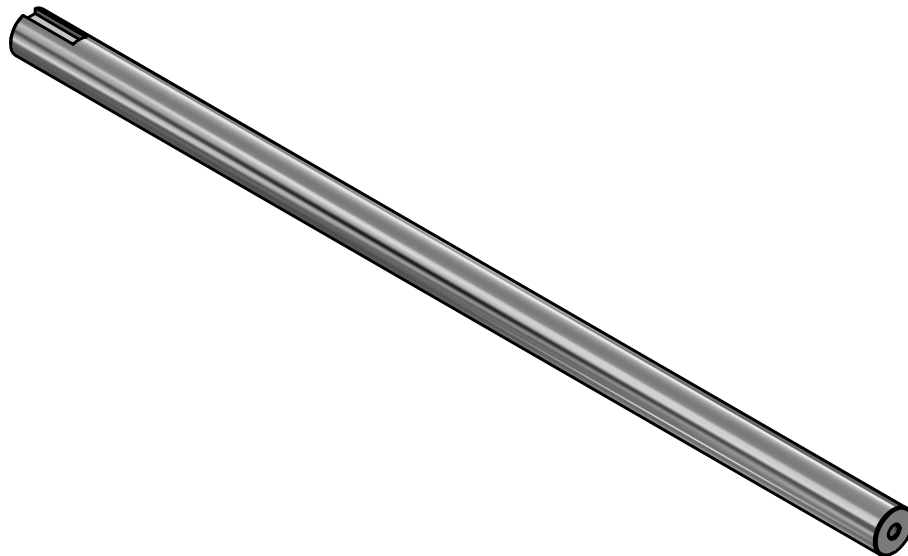
DIMENSION ARE IN INCHES & PROVIDED PRIOR TO SURFACE TREATMENTS, UNLESS NOTED.

SIZE A

EST WEIGHT:

SHEET 12 of 28

# BL1DCBA-2678 - Round Bar 3/4" O.D. x 17" LG.



AVW EQUIPMENT CO., INC.  
105 S. 9TH AVENUE  
MAYWOOD, IL 60153  
Tel: 708-343-7738 Fax: 708-343-9065  
WWW.AVWEQUIPMENT.COM

## - COMPANY PROPRIETARY NOTE -

THIS DRAWING AND ITS DESIGNS ARE PROPERTY OF AVW EQUIPMENT CO. & IT IS NOT TO BE USED OR REPRODUCED WITHOUT THE PERMISSION FROM AVW CO.

DRAWN BY

Jibin

CUSTOMER: AVW EQUIPMENT CO.

CHECKED BY

PROJECT: BL1DC-2678\_Air Intake Regulating Gate Assembly

QTY

DESCRIPTION: Round Bar 3/4" O.D. x 17" LG.

RELEASE DATE

9/23/2021

PART NUMBER: BL1DCBA-2678

REV# 1

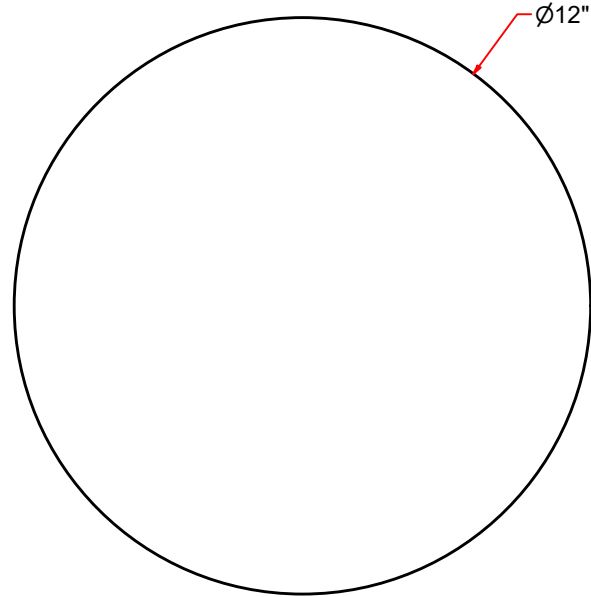
DIMENSION ARE IN INCHES & PROVIDED PRIOR TO SURFACE TREATMENTS, UNLESS NOTED.


SIZE  
A

EST WEIGHT:

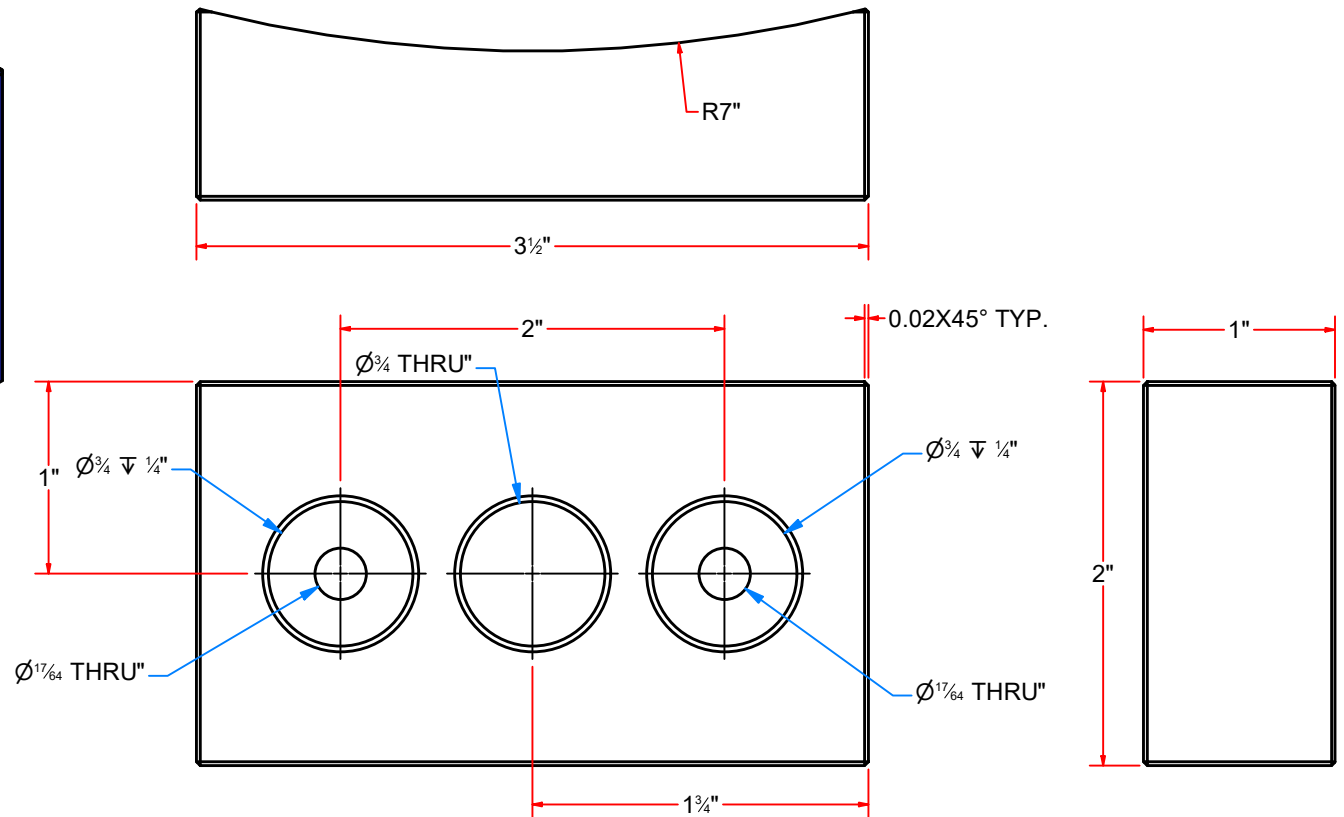
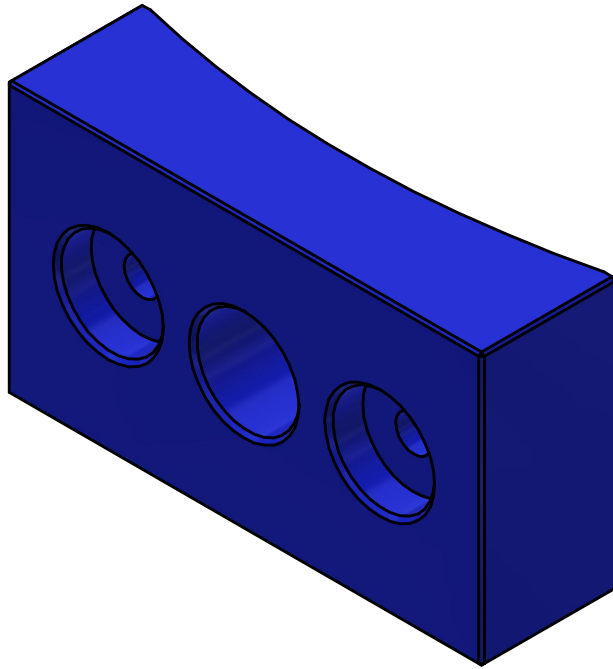
SHEET 13 of 28


PATH:L:\Designs\Product Lines\Blower\BL1DC-2678 - Air Intake Regulating Gate\Parts\BL1DC-2678\_Shaft - 3\_4in OD.ipt



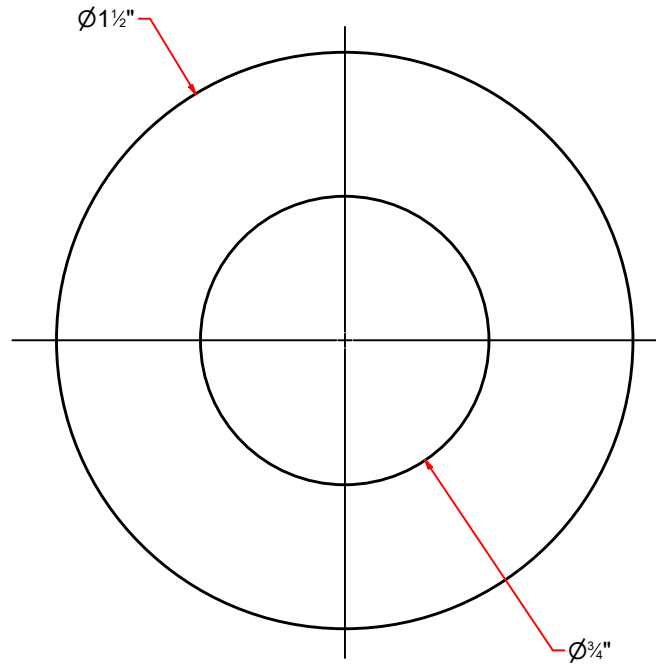
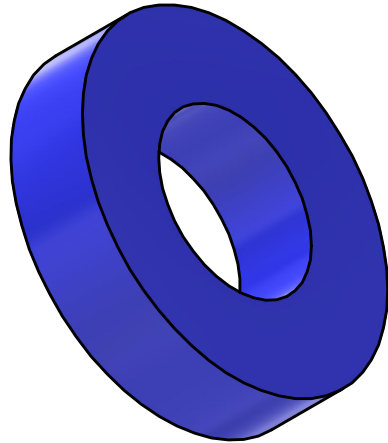
 <p>AVW EQUIPMENT CO., INC. 105 S. 9TH AVENUE MAYWOOD, IL 60153 Tel: 708-343-7738 Fax: 708-343-9065 WWW.AVWEQUIPMENT.COM</p>	DRAWN BY	Jibin	CUSTOMER: AVW EQUIPMENT CO.		
	CHECKED BY		PROJECT: BL1DC-2678_Air Intake Regulating Gate Assembly		
	QTY		DESCRIPTION: Sheet Metal #10Ga. x 12" O.D.		
<p><b>- COMPANY PROPRIETARY NOTE -</b> THIS DRAWING AND ITS DESIGNS ARE PROPERTY OF AVW EQUIPMENT CO. &amp; IT IS NOT TO BE USED OR REPRODUCED WITHOUT THE PERMISSION FROM AVW CO.</p>	RELEASE DATE	9/23/2021	PART NUMBER: BL1DCBB-2678		REV# 1
	DIMENSION ARE IN INCHES & PROVIDED PRIOR TO SURFACE TREATMENTS, UNLESS NOTED.		SIZE <b>A</b>	EST WEIGHT:	SHEET 14 of 28
PATH: L:\Designs\Product Lines\Blower\BL1DC-2678 - Air Intake Regulating Gate\Parts\BL1DC-2678_D11-3_4 -12Ga.ipt					

# BL1DC1-2678 - 3 1/2"x2"x1" UHMW BRACKET



	AVW EQUIPMENT CO., INC. 105 S. 9TH AVENUE MAYWOOD, IL 60153 Tel: 708-343-7738 Fax: 708-343-9065 WWW.AVWEQUIPMENT.COM		DRAWN BY	Jibin	CUSTOMER: AVW EQUIPMENT CO.				
			CHECKED BY		PROJECT: BL1DC-2678_Air Intake Regulating Gate Assembly				
			QTY		DESCRIPTION: 3 1/2"x2"x1" UHMW BRACKET				
<b>- COMPANY PROPRIETARY NOTE -</b> THIS DRAWING AND ITS DESIGNS ARE PROPERTY OF AVW EQUIPMENT CO. & IT IS NOT TO BE USED OR REPRODUCED WITHOUT THE PERMISSION FROM AVW CO.			RELEASE DATE	9/23/2021	PART NUMBER: BL1DC1-2678		REV# 1		
			DIMENSION ARE IN INCHES & PROVIDED PRIOR TO SURFACE TREATMENTS, UNLESS NOTED.				SIZE <b>A</b>	EST WEIGHT:	SHEET 15 of 28
PATH:L:\Designs\Product Lines\Blower\BL1DC-2678 - Air Intake Regulating Gate\Parts\BL1DC-2678_Side Ring - 3_4 UHMW Bracket_01.ipt									

# BL1DCD-2678 - UHMW Spacer 3/4" IDx 1 1/2" OD



AVW EQUIPMENT CO., INC.  
105 S. 9TH AVENUE  
MAYWOOD, IL 60153  
Tel: 708-343-7738 Fax: 708-343-9065  
WWW.AVWEQUIPMENT.COM

## - COMPANY PROPRIETARY NOTE -

THIS DRAWING AND ITS DESIGNS ARE PROPERTY OF AVW EQUIPMENT CO. &  
IT IS NOT TO BE USED OR REPRODUCED WITHOUT THE PERMISSION FROM AVW CO.

DRAWN BY

Jibin

CUSTOMER: AVW EQUIPMENT CO.

CHECKED BY

PROJECT: BL1DC-2678\_Air Intake Regulating Gate Assembly

QTY

DESCRIPTION: UHMW Spacer 3/4" IDx 1 1/2" OD

RELEASE  
DATE

9/23/2021

PART NUMBER: BL1DCD-2678

REV# 1

DIMENSION ARE IN INCHES & PROVIDED PRIOR  
TO SURFACE TREATMENTS, UNLESS NOTED.

SIZE  
A

EST WEIGHT:

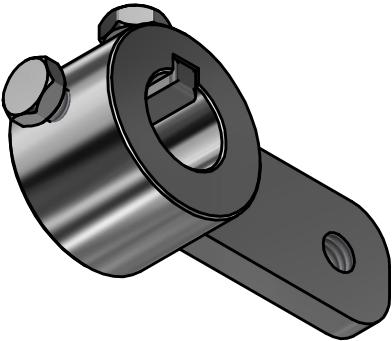
SHEET 16 of 28

PATH:L:\Designs\Product Lines\Blower\BL1DC-2678 - Air Intake Regulating Gate\Parts\BL1DC-2678\_Spacer.ipt

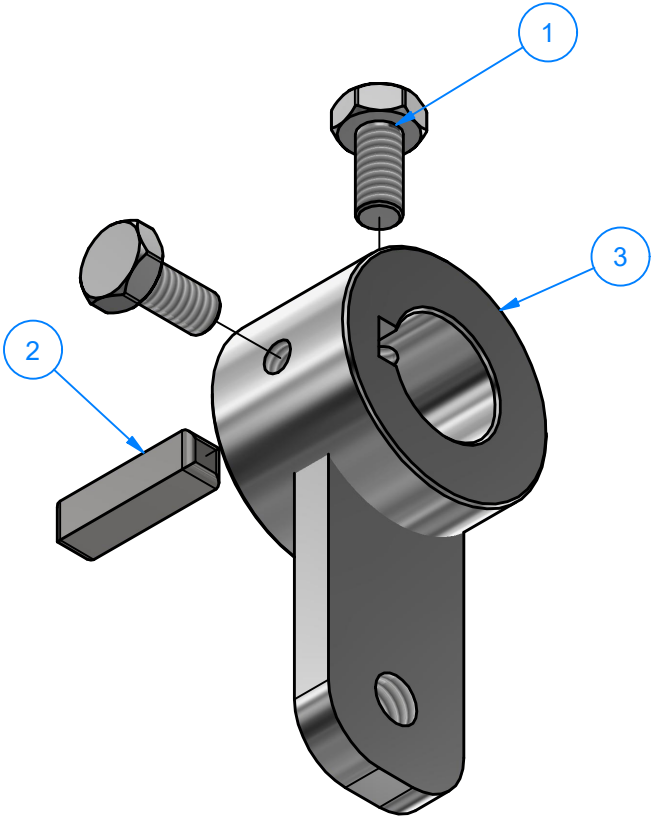
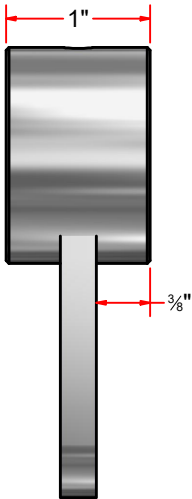
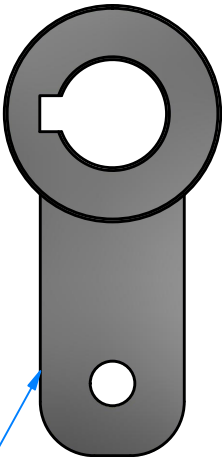


BL1DC-CAM-2678 - Blower Cam Arm Assy.

Parts List		
ITEM	QTY	DESCRIPTION
1	2	1/4" - 20 x 0.5" UNC Hex Screw
2	1	Collar Key_SQ 1/4" x 1"
3	1	Blower Cam Arm Weld Sub Assy.



Blower Cam Arm Weld Sub Assy.



Weld this piece perpendicular to the key way and opposite to the other hole in the collar

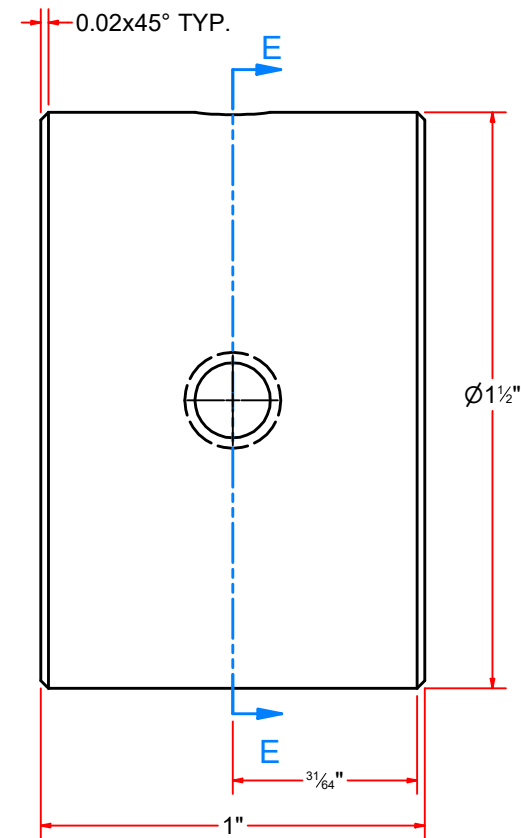
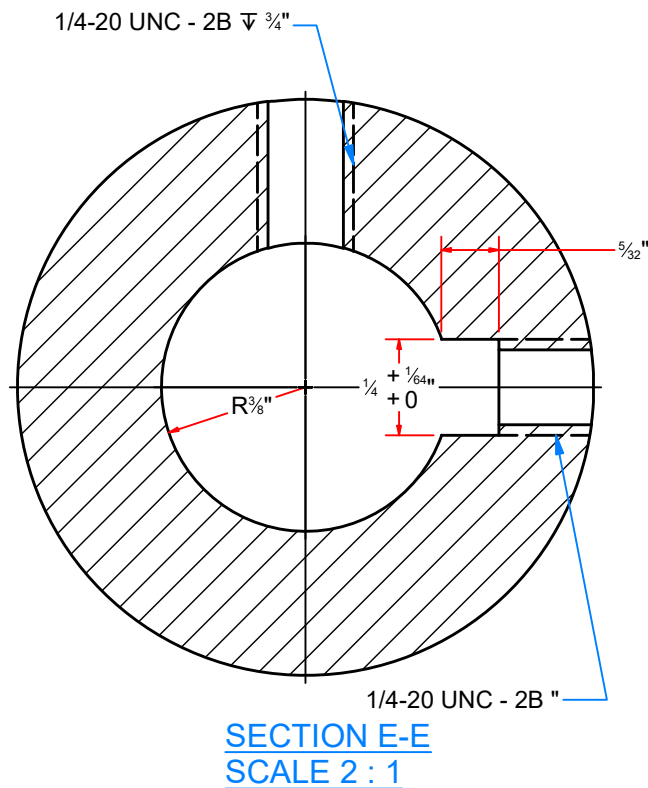
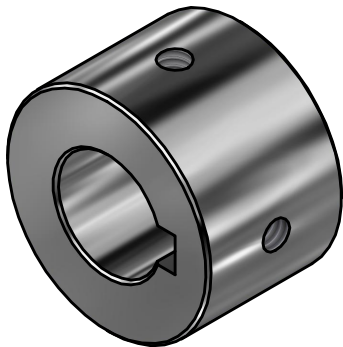


AVW EQUIPMENT CO., INC.  
105 S. 9TH AVENUE  
MAYWOOD, IL 60153  
Tel: 708-343-7738 Fax: 708-343-9065  
WWW.AVWEQUIPMENT.COM

- COMPANY PROPRIETARY NOTE -  
THIS DRAWING AND ITS DESIGNS ARE PROPERTY OF AVW EQUIPMENT CO. &  
IT IS NOT TO BE USED OR REPRODUCED WITHOUT THE PERMISSION FROM AVW CO.

DRAWN BY	Jibin	CUSTOMER: AVW EQUIPMENT CO.	
CHECKED BY		PROJECT: BL1DC-2678_Air Intake Regulating Gate Assembly	
QTY		DESCRIPTION: Blower Cam Arm Assy.	
RELEASE DATE	9/23/2021	PART NUMBER: BL1DC-CAM-2678	REV# 1
DIMENSION ARE IN INCHES & PROVIDED PRIOR TO SURFACE TREATMENTS, UNLESS NOTED.		SIZE A	EST WEIGHT: SHEET 17 of 28

BL1DC-CAMAA-2678 - Collar O.D 1 1/2" x I.D 3/4" w/ Keyway

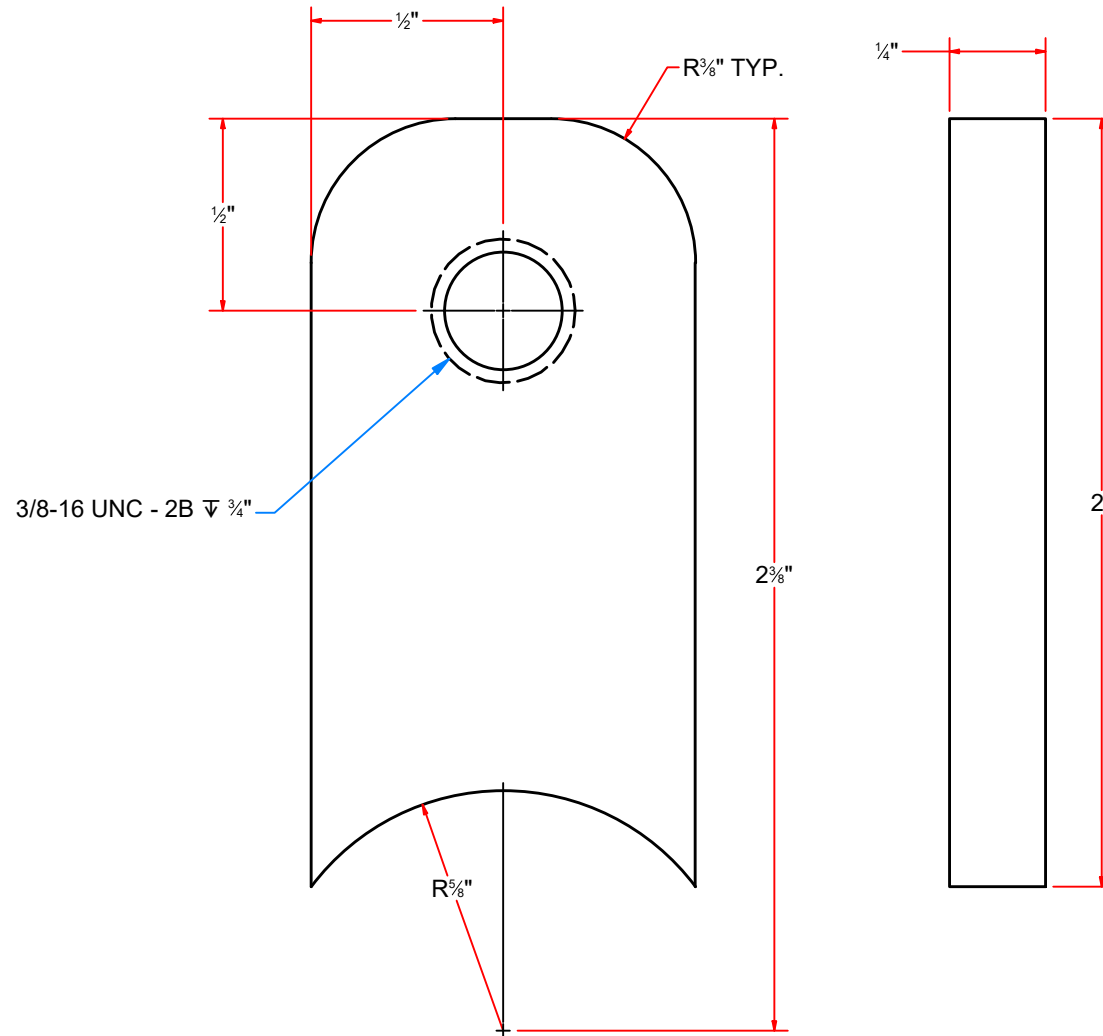
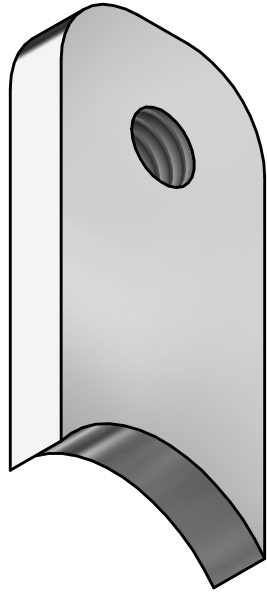


AVW EQUIPMENT CO., INC.  
105 S. 9TH AVENUE  
MAYWOOD, IL 60153  
Tel: 708-343-7738 Fax: 708-343-9065  
WWW.AVWEQUIPMENT.COM

- COMPANY PROPRIETARY NOTE -  
THIS DRAWING AND ITS DESIGNS ARE PROPERTY OF AVW EQUIPMENT CO. &  
IT IS NOT TO BE USED OR REPRODUCED WITHOUT THE PERMISSION FROM AVW CO.

DRAWN BY	Jibin	CUSTOMER: AVW EQUIPMENT CO.	
CHECKED BY		PROJECT: BL1DC-2678_Air Intake Regulating Gate Assembly	
QTY		DESCRIPTION: Collar O.D 1 1/2" x I.D 3/4" w/ Keyway	
RELEASE DATE	9/23/2021	PART NUMBER: BL1DC-CAMAA-2678	REV# 1
DIMENSION ARE IN INCHES & PROVIDED PRIOR TO SURFACE TREATMENTS, UNLESS NOTED.		SIZE A	EST WEIGHT: SHEET 18 of 28

# BL1DC-CAMAB-2678 - Cam Plate\_#1/4"x 1"x 2"



AVW EQUIPMENT CO., INC.  
105 S. 9TH AVENUE  
MAYWOOD, IL 60153  
Tel: 708-343-7738 Fax: 708-343-9065  
WWW.AVWEQUIPMENT.COM

## - COMPANY PROPRIETARY NOTE -

THIS DRAWING AND ITS DESIGNS ARE PROPERTY OF AVW EQUIPMENT CO. & IT IS NOT TO BE USED OR REPRODUCED WITHOUT THE PERMISSION FROM AVW CO.

DRAWN BY

Jibin

CUSTOMER: AVW EQUIPMENT CO.

CHECKED BY

PROJECT: BL1DC-2678\_Air Intake Regulating Gate Assembly

QTY

DESCRIPTION: Cam Plate\_#1/4"x 1"x 2"

RELEASE DATE

9/23/2021

PART NUMBER: BL1DC-CAMAB-2678

REV# 1

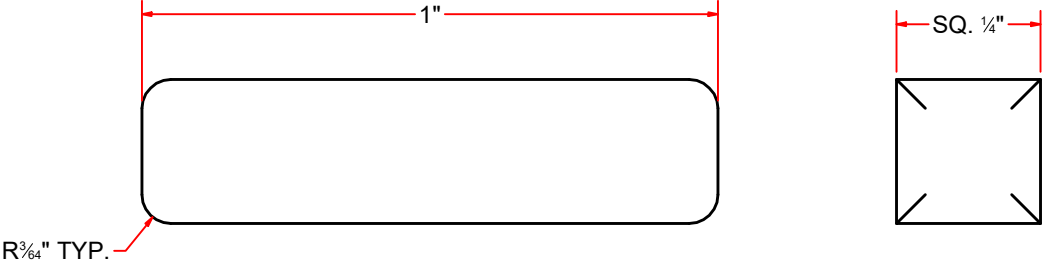
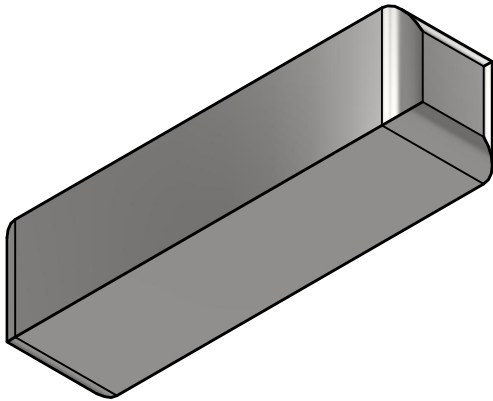
DIMENSION ARE IN INCHES & PROVIDED PRIOR TO SURFACE TREATMENTS, UNLESS NOTED.

SIZE  
A

EST WEIGHT:

SHEET 19 of 28

TB2ADBA-4BK - Collar Key\_SQ 1/4" x 1"



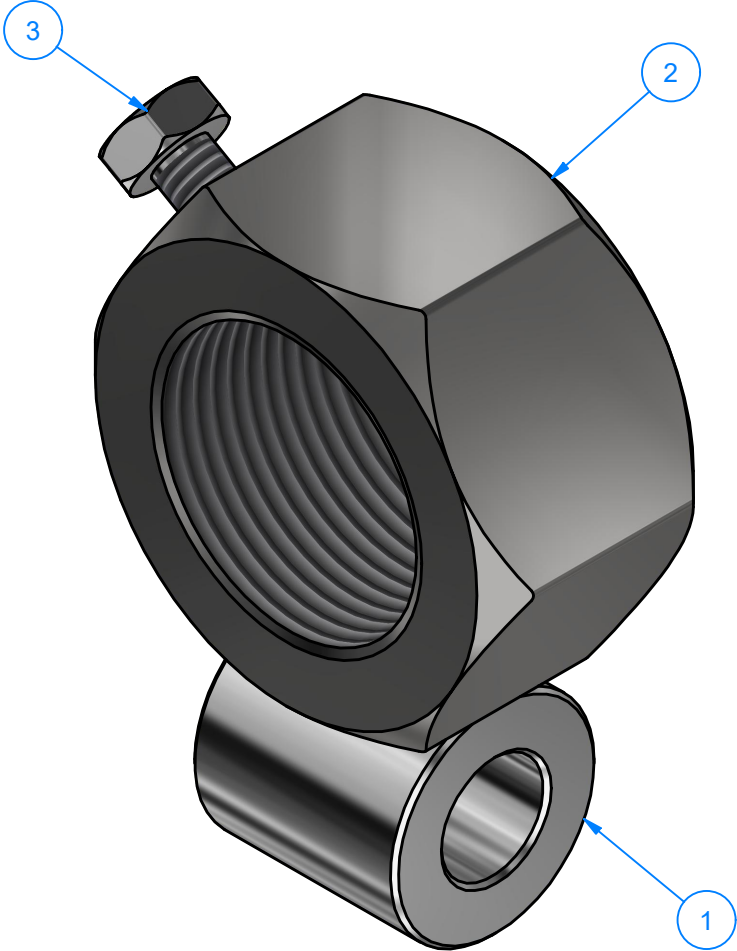
AVW EQUIPMENT CO., INC.  
105 S. 9TH AVENUE  
MAYWOOD, IL 60153  
Tel: 708-343-7738 Fax: 708-343-9065  
WWW.AVWEQUIPMENT.COM

- COMPANY PROPRIETARY NOTE -  
THIS DRAWING AND ITS DESIGNS ARE PROPERTY OF AVW EQUIPMENT CO. &  
IT IS NOT TO BE USED OR REPRODUCED WITHOUT THE PERMISSION FROM AVW CO.

DRAWN BY	Jibin	CUSTOMER: AVW EQUIPMENT CO.	
CHECKED BY		PROJECT: BL1DC-2678_Air Intake Regulating Gate Assembly	
QTY		DESCRIPTION: Collar Key_SQ 1/4" x 1"	
RELEASE DATE	9/23/2021	PART NUMBER: TB2ADBA-4BK	REV# 1
DIMENSION ARE IN INCHES & PROVIDED PRIOR TO SURFACE TREATMENTS, UNLESS NOTED.		SIZE A	EST WEIGHT: SHEET 20 of 28

SB1ABDA-0808 - Cylinder Mount Bracket

Parts List		
ITEM	QTY	DESCRIPTION
1	1	Round Bar 1" O.D. x 1/2" I.D. x1" LG.
2	1	1 1/4"-12_1 1/16" thk Hex Nut w/ slot
3	1	1/4" - 20 x 0.5" UNC Hex Screw

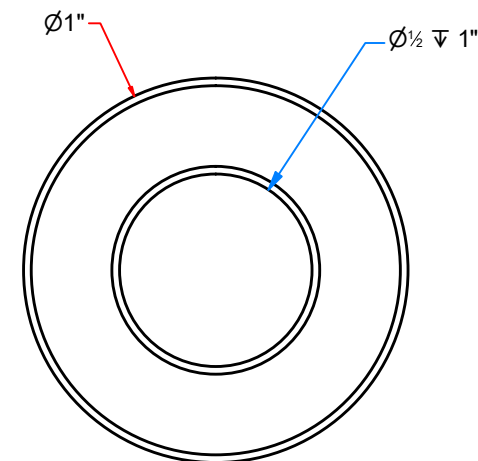
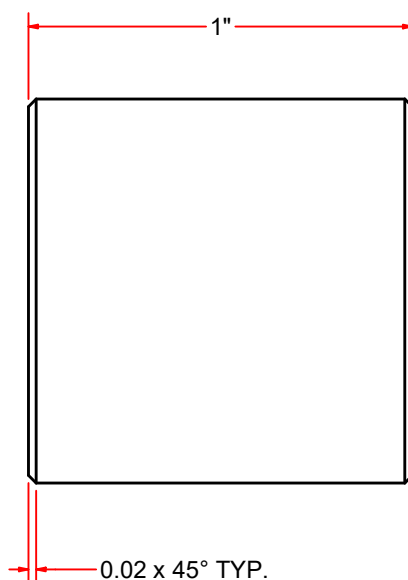
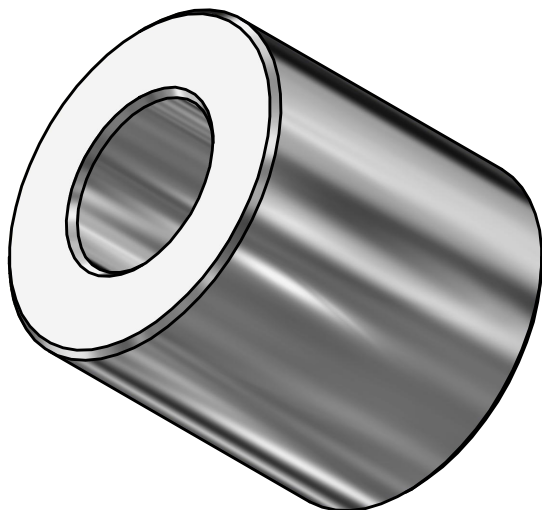



AVW EQUIPMENT CO., INC.  
105 S. 9TH AVENUE  
MAYWOOD, IL 60153  
Tel: 708-343-7738 Fax: 708-343-9065  
WWW.AVWEQUIPMENT.COM

- COMPANY PROPRIETARY NOTE -  
THIS DRAWING AND ITS DESIGNS ARE PROPERTY OF AVW EQUIPMENT CO. &  
IT IS NOT TO BE USED OR REPRODUCED WITHOUT THE PERMISSION FROM AVW CO.

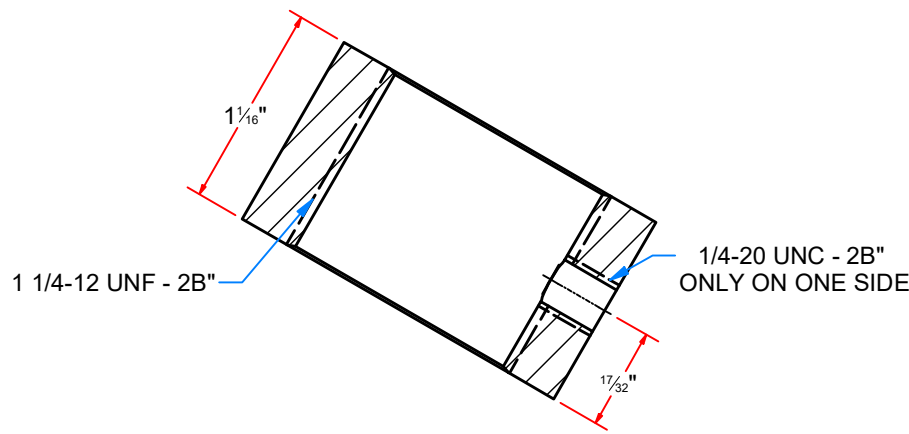
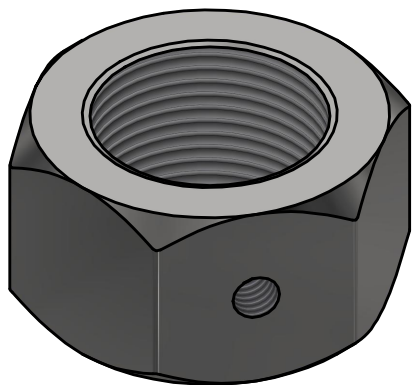
DRAWN BY	Jibin	CUSTOMER: AVW EQUIPMENT CO.	
CHECKED BY		PROJECT: BL1DC-2678_Air Intake Regulating Gate Assembly	
QTY		DESCRIPTION: Cylinder Mount Bracket	
RELEASE DATE	9/23/2021	PART NUMBER: SB1ABDA-0808	REV# 1
DIMENSION ARE IN INCHES & PROVIDED PRIOR TO SURFACE TREATMENTS, UNLESS NOTED.		SIZE A	EST WEIGHT:
			SHEET 21 of 28

# SB1ABDAA-0808 - Round Bar 1" O.D. x 1/2" I.D. x1" LG.

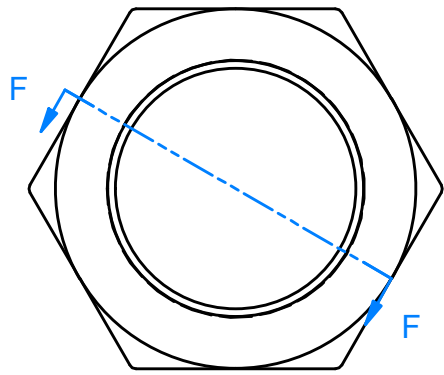



 <p>AVW EQUIPMENT CO., INC. 105 S. 9TH AVENUE MAYWOOD, IL 60153 Tel: 708-343-7738 Fax: 708-343-9065 WWW.AVWEQUIPMENT.COM</p>	DRAWN BY	Jibin	CUSTOMER: AVW EQUIPMENT CO.		
	CHECKED BY		PROJECT: BL1DC-2678_Air Intake Regulating Gate Assembly		
	QTY		DESCRIPTION: Round Bar 1" O.D. x 1/2" I.D. x1" LG.		
<p><b>- COMPANY PROPRIETARY NOTE -</b> THIS DRAWING AND ITS DESIGNS ARE PROPERTY OF AVW EQUIPMENT CO. &amp; IT IS NOT TO BE USED OR REPRODUCED WITHOUT THE PERMISSION FROM AVW CO.</p>	RELEASE DATE	9/23/2021	PART NUMBER: SB1ABDAA-0808		REV# 1
	DIMENSION ARE IN INCHES & PROVIDED PRIOR TO SURFACE TREATMENTS, UNLESS NOTED.		SIZE <b>A</b>	EST WEIGHT:	
			SHEET 22 of 28		
PATH:L:\Designs\Product Lines\Wraps & Combos\CRWWB - Combo Rockers with Wheel Brush\Parts\CRWWBA - Combo Rockers with Wheel Brush Arm\Parts\CRWWBAFM - Front Mount\Parts\CRWWBAFM001.ipt					

SB1ABDAB-0808 - 1 1/4"-12\_1 1/16" thk Hex Nut w/ slot

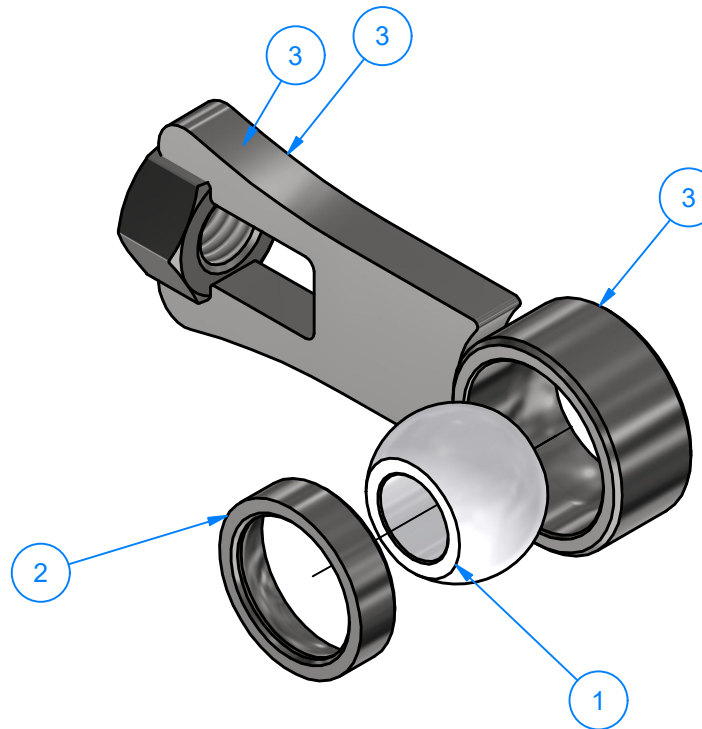
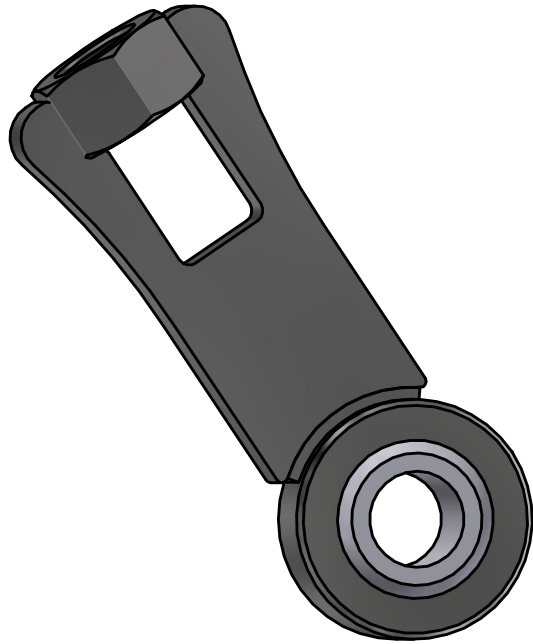


SECTION F-F  
SCALE 1 : 1



 <div>AVW EQUIPMENT CO., INC. 105 S. 9TH AVENUE MAYWOOD, IL 60153 Tel: 708-343-7738 Fax: 708-343-9065 WWW.AVWEQUIPMENT.COM</div>	DRAWN BY	Jibin	CUSTOMER: AVW EQUIPMENT CO.	
	CHECKED BY		PROJECT: BL1DC-2678_Air Intake Regulating Gate Assembly	
	QTY		DESCRIPTION: 1 1/4"-12_1 1/16" thk Hex Nut w/ slot	
	RELEASE DATE	9/23/2021	PART NUMBER: SB1ABDAB-0808	REV# 1
<div>- COMPANY PROPRIETARY NOTE - THIS DRAWING AND ITS DESIGNS ARE PROPERTY OF AVW EQUIPMENT CO. &amp; IT IS NOT TO BE USED OR REPRODUCED WITHOUT THE PERMISSION FROM AVW CO.</div>	DIMENSION ARE IN INCHES & PROVIDED PRIOR TO SURFACE TREATMENTS, UNLESS NOTED.		SIZE A	EST WEIGHT:
	PATH:L:\Designs\Product Lines\Blower\BL1DC-2678 - Air Intake Regulating Gate\Parts\Slotted_1_1-4 -12 18-8ss Heavy Hex Nut.ipt		SHEET 23 of 28	

# BJ1-2-20 - Ball Joint End Rod



Parts List		
ITEM	QTY	DESCRIPTION
1	1	Nylon Ball Insert 1" OD. x 1/2" ID. x 5/8" LG
2	1	Small Ring OD 1"xID 3/4"x1/4"LG
3	1	Ball Joint Weldment



AVW EQUIPMENT CO., INC.  
105 S. 9TH AVENUE  
MAYWOOD, IL 60153  
Tel: 708-343-7738 Fax: 708-343-9065  
WWW.AVWEQUIPMENT.COM

## - COMPANY PROPRIETARY NOTE -

THIS DRAWING AND ITS DESIGNS ARE PROPERTY OF AVW EQUIPMENT CO. & IT IS NOT TO BE USED OR REPRODUCED WITHOUT THE PERMISSION FROM AVW CO.

DRAWN BY

Jibin

CUSTOMER: AVW EQUIPMENT CO.

CHECKED BY

PROJECT: BL1DC-2678\_Air Intake Regulating Gate Assembly

QTY

DESCRIPTION: Ball Joint End Rod

RELEASE DATE

9/23/2021

PART NUMBER: BJ1-2-20

REV# 1

DIMENSION ARE IN INCHES & PROVIDED PRIOR TO SURFACE TREATMENTS, UNLESS NOTED.

SIZE  
A

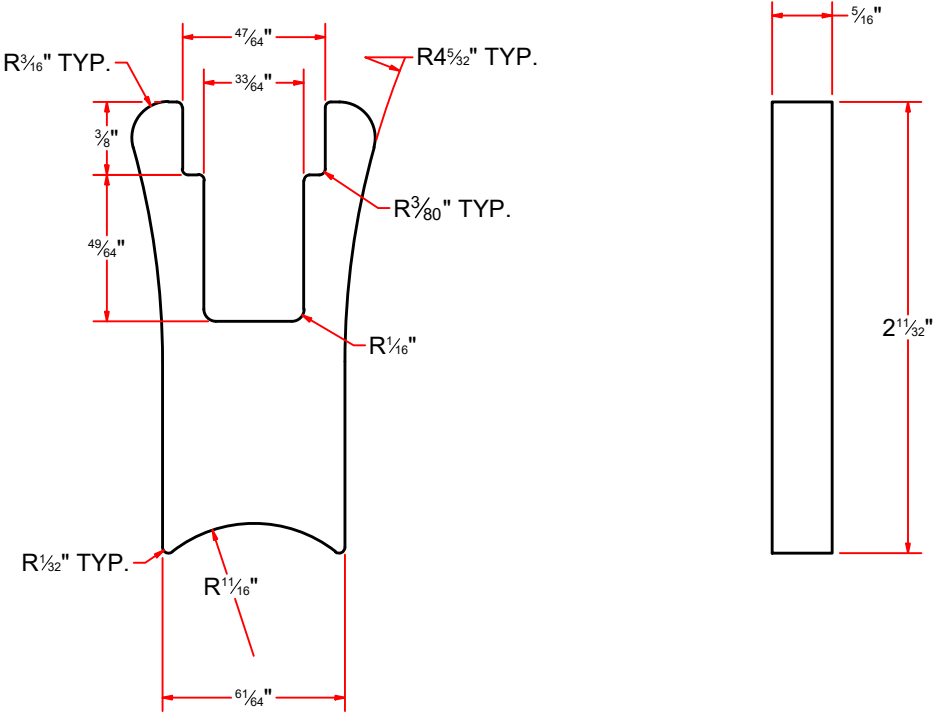
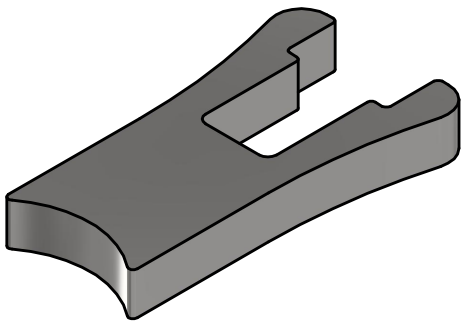
EST WEIGHT:

SHEET 24 of 28

PATH:L:\Libraries\AVW Components\Ball Joint Rod End\Ball Joint Rod End\BJ1-2-20.iam



BJ1-2-20D - Cylinder Lever #5/16x 1 9/32"x 2 3/8"

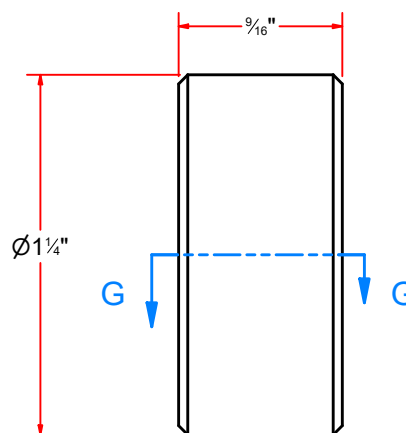
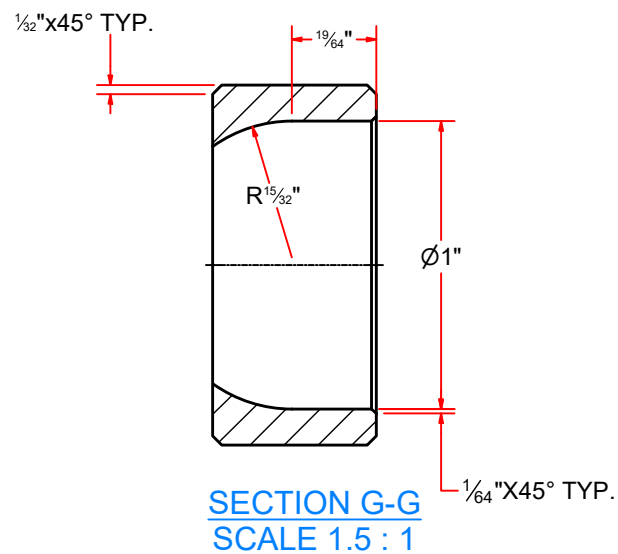


AVW EQUIPMENT CO., INC.  
105 S. 9TH AVENUE  
MAYWOOD, IL 60153  
Tel: 708-343-7738 Fax: 708-343-9065  
WWW.AVWEQUIPMENT.COM

**- COMPANY PROPRIETARY NOTE -**  
THIS DRAWING AND ITS DESIGNS ARE PROPERTY OF AVW EQUIPMENT CO. &  
IT IS NOT TO BE USED OR REPRODUCED WITHOUT THE PERMISSION FROM AVW CO.

DRAWN BY	Jibin	CUSTOMER: AVW EQUIPMENT CO.	
CHECKED BY		PROJECT: BL1DC-2678_Air Intake Regulating Gate Assembly	
QTY		DESCRIPTION: Cylinder Lever #5/16x 1 9/32"x 2 3/8"	
RELEASE DATE	9/23/2021	PART NUMBER: BJ1-2-20D	REV# 1
DIMENSION ARE IN INCHES & PROVIDED PRIOR TO SURFACE TREATMENTS, UNLESS NOTED.		SIZE A	EST WEIGHT: SHEET 25 of 28

# BJ1-2-20C - Large Ring OD 1 1/4"x ID 1"x 9/16" LG



AVW EQUIPMENT CO., INC.  
105 S. 9TH AVENUE  
MAYWOOD, IL 60153  
Tel: 708-343-7738 Fax: 708-343-9065  
WWW.AVWEQUIPMENT.COM

## - COMPANY PROPRIETARY NOTE -

THIS DRAWING AND ITS DESIGNS ARE PROPERTY OF AVW EQUIPMENT CO. & IT IS NOT TO BE USED OR REPRODUCED WITHOUT THE PERMISSION FROM AVW CO.

DRAWN BY

Jibin

CUSTOMER: AVW EQUIPMENT CO.

CHECKED BY

PROJECT: BL1DC-2678\_Air Intake Regulating Gate Assembly

QTY

DESCRIPTION: Large Ring OD 1 1/4"x ID 1"x 9/16" LG

RELEASE DATE

9/23/2021

PART NUMBER: BJ1-2-20C

REV# 1

DIMENSION ARE IN INCHES & PROVIDED PRIOR TO SURFACE TREATMENTS, UNLESS NOTED.

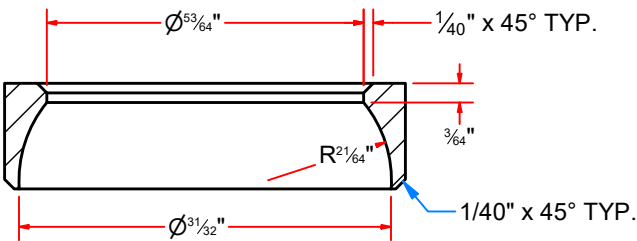
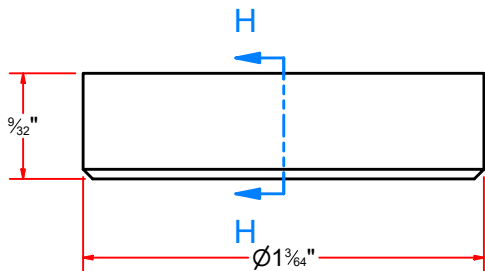
SIZE  
A

EST WEIGHT:

SHEET 26 of 28

PATH:L:\Libraries\AVW Components\Ball Joint Rod End\Ball Joint Rod End\BLJRE\_001.ipt

BJ1-2-20B - Small Ring OD 1"xID 3/4"x1/4"LG



SECTION H-H  
SCALE 2 : 1

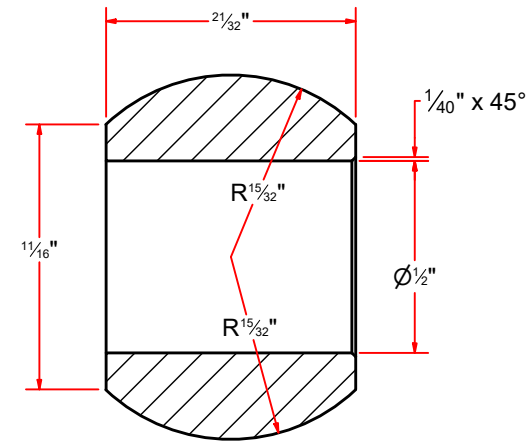
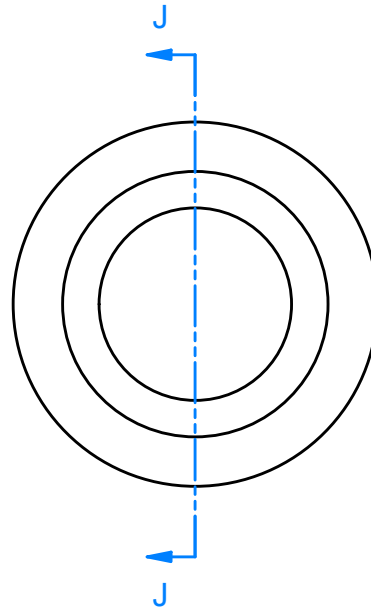
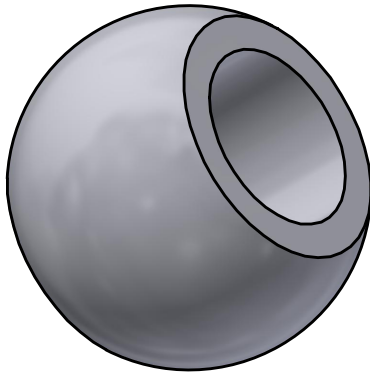


AVW EQUIPMENT CO., INC.  
105 S. 9TH AVENUE  
MAYWOOD, IL 60153  
Tel: 708-343-7738 Fax: 708-343-9065  
WWW.AVWEQUIPMENT.COM

- COMPANY PROPRIETARY NOTE -  
THIS DRAWING AND ITS DESIGNS ARE PROPERTY OF AVW EQUIPMENT CO. &  
IT IS NOT TO BE USED OR REPRODUCED WITHOUT THE PERMISSION FROM AVW CO.

DRAWN BY	Jibin	CUSTOMER: AVW EQUIPMENT CO.	
CHECKED BY		PROJECT: BL1DC-2678_Air Intake Regulating Gate Assembly	
QTY		DESCRIPTION: Small Ring OD 1"xID 3/4"x1/4"LG	
RELEASE DATE	9/23/2021	PART NUMBER: BJ1-2-20B	REV# 1
DIMENSION ARE IN INCHES & PROVIDED PRIOR TO SURFACE TREATMENTS, UNLESS NOTED.		SIZE A	EST WEIGHT: SHEET 27 of 28

# BJ1-2-20A - Nylon Ball Insert 1" OD. x 1/2" ID. x 5/8" LG



**SECTION J-J**  
**SCALE 2 : 1**



AVW EQUIPMENT CO., INC.  
105 S. 9TH AVENUE  
MAYWOOD, IL 60153  
Tel: 708-343-7738 Fax: 708-343-9065  
WWW.AVWEQUIPMENT.COM

**- COMPANY PROPRIETARY NOTE -**

THIS DRAWING AND ITS DESIGNS ARE PROPERTY OF AVW EQUIPMENT CO. & IT IS NOT TO BE USED OR REPRODUCED WITHOUT THE PERMISSION FROM AVW CO.

DRAWN BY

Jibin

CUSTOMER: AVW EQUIPMENT CO.

CHECKED BY

PROJECT: BL1DC-2678\_Air Intake Regulating Gate Assembly

QTY

DESCRIPTION: Nylon Ball Insert 1" OD. x 1/2" ID. x 5/8" LG

RELEASE DATE

9/23/2021

PART NUMBER: BJ1-2-20A

REV# 1

DIMENSION ARE IN INCHES & PROVIDED PRIOR TO SURFACE TREATMENTS, UNLESS NOTED.

SIZE  
**A**

EST WEIGHT:

SHEET 28 of 28