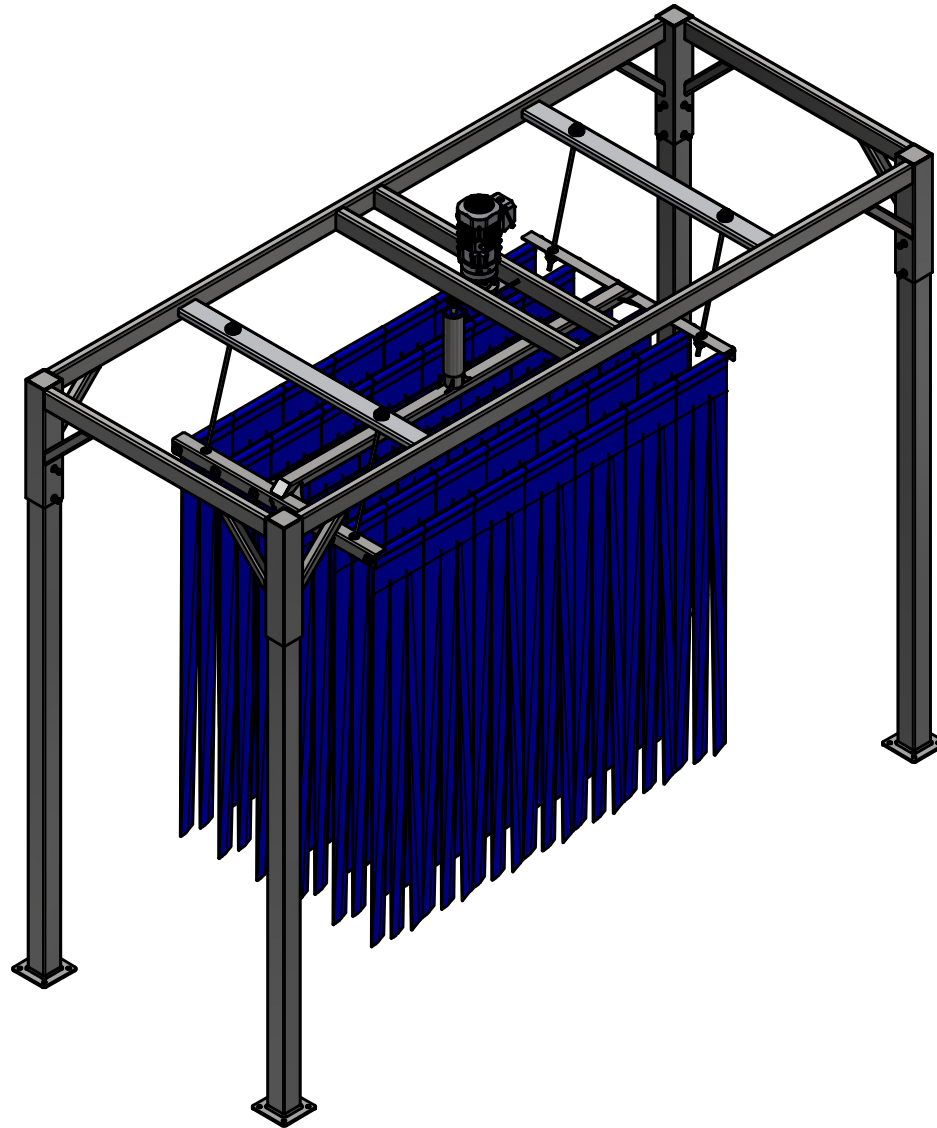


MC2-EL-0914 - Mitter Curtain Electric



AVW EQUIPMENT CO., INC.
105 S. 9TH AVENUE
MAYWOOD, IL 60153
Tel: 708-343-7738 Fax: 708-343-9065
WWW.AVWEQUIPMENT.COM

- COMPANY PROPRIETARY NOTE -

THIS DRAWING AND ITS DESIGNS ARE PROPERTY OF AVW EQUIPMENT CO. & IT IS NOT TO BE USED OR REPRODUCED WITHOUT THE PERMISSION FROM AVW CO.

DRAWN BY

Tittu

CUSTOMER: AVW Equipment Co.

CHECKED BY

PROJECT: MC2-Full Mitter Hydraulic

QTY

DESCRIPTION: Mitter Curtain Electric

RELEASE DATE

10/13/2021

PART NUMBER: MC2-EL-0914

REV#

DIMENSION ARE IN INCHES & PROVIDED PRIOR TO SURFACE TREATMENTS, UNLESS NOTED.

SIZE
A

EST WEIGHT:

SHEET 1 of 22

PATH:L:\Designs\Product Lines\Mitters\MC2-EL - Mitter Curtain Electric Drive - horizontal & vertical drives\MC2-EL Mitter Curtain Electric.iam

REVISION HISTORY

ECO No.	REV	DESCRIPTION	DATE	ENGINEER	APPROVED
		INITIAL RELEASE	10/20/21	Tittu	Dusan



AVW EQUIPMENT CO., INC.
105 S. 9TH AVENUE
MAYWOOD, IL 60153
Tel: 708-343-7738 Fax: 708-343-9065
WWW.AVWEQUIPMENT.COM

- COMPANY PROPRIETARY NOTE -

THIS DRAWING AND ITS DESIGNS ARE PROPERTY OF AVW EQUIPMENT CO. &
IT IS NOT TO BE USED OR REPRODUCED WITHOUT THE PERMISSION FROM AVW CO.

PATH:

DRAWN BY

Tittu

CUSTOMER: AVW Equipment Co.

CHECKED BY

PROJECT: MC2-Full Mitter Hydraulic

QTY

DESCRIPTION:

RELEASE
DATE

10/13/2021

PART NUMBER:

REV#

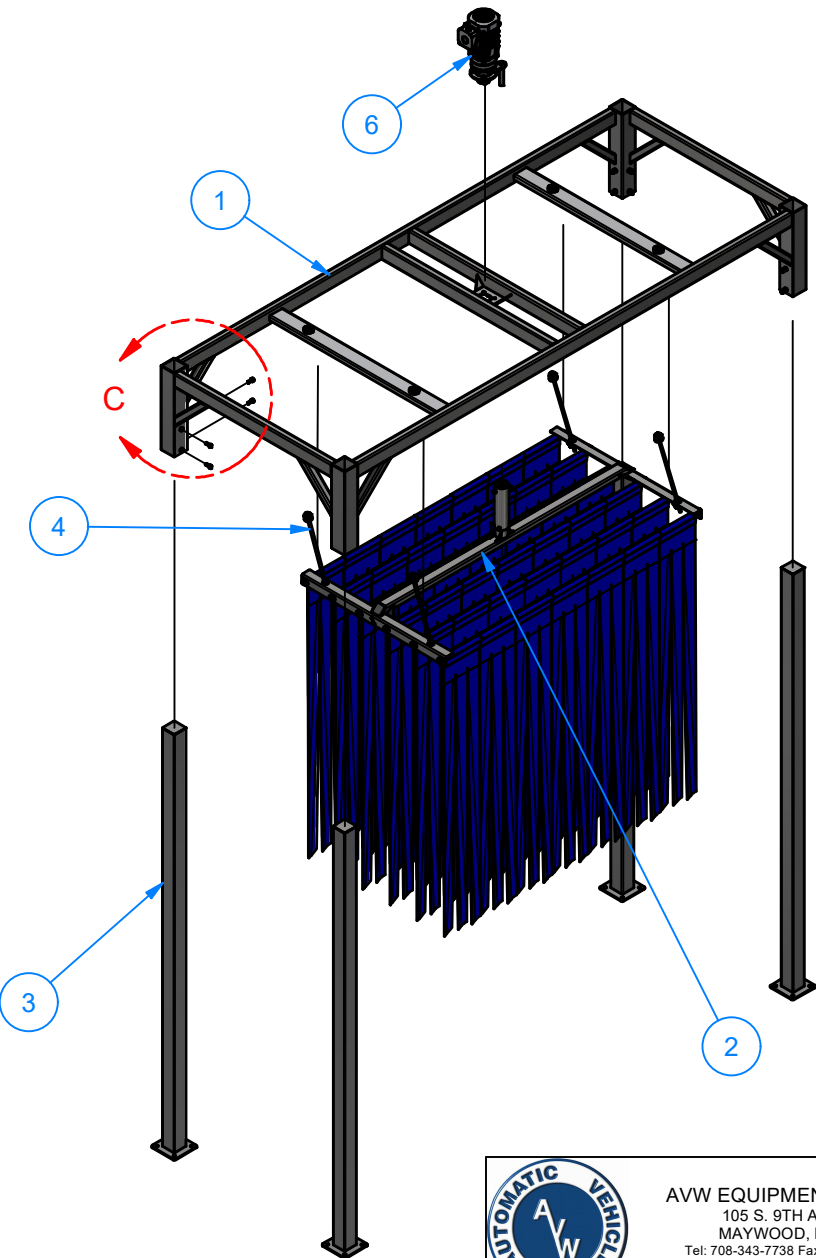
DIMENSION ARE IN INCHES & PROVIDED PRIOR
TO SURFACE TREATMENTS, UNLESS NOTED.

SIZE
A

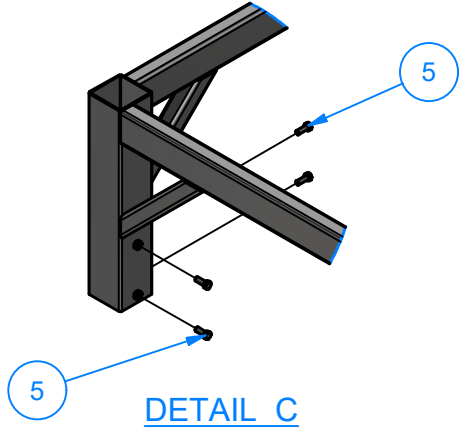
EST WEIGHT:

SHEET 2 of 22

MC2-EL-0914 - Mitter Curtain Electric



Parts List		
ITEM	QTY	DESCRIPTION
1	1	Full Mitter Top Frame Electric
2	1	Basket Assembly
3	4	Stand. 120" Leg Assembly
4	4	Basket Support Rod Assembly - 27" LG
5	16	1/2" - 13 x 1.25" UNC Hex Screw
6	1	Basket Drive Assembly Electric



NOTE: Curtain cloth sold separately

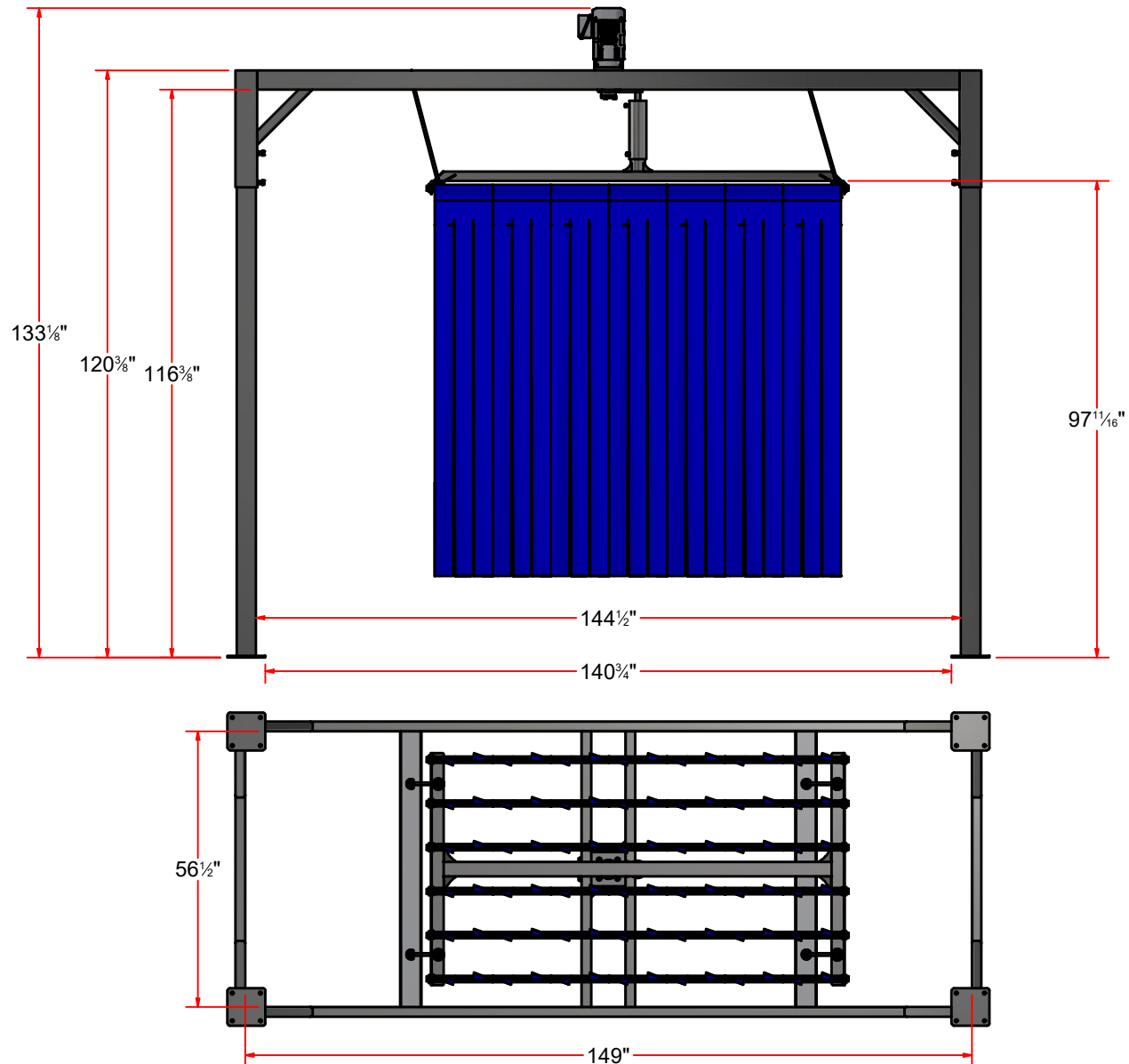


AVW EQUIPMENT CO., INC.
105 S. 9TH AVENUE
MAYWOOD, IL 60153
Tel: 708-343-7738 Fax: 708-343-9065
WWW.AVWEQUIPMENT.COM

- COMPANY PROPRIETARY NOTE -
THIS DRAWING AND ITS DESIGNS ARE PROPERTY OF AVW EQUIPMENT CO. &
IT IS NOT TO BE USED OR REPRODUCED WITHOUT THE PERMISSION FROM AVW CO.

DRAWN BY	Tittu	CUSTOMER: AVW Equipment Co.	
CHECKED BY		PROJECT: MC2-Full Mitter Hydraulic	
QTY		DESCRIPTION: Mitter Curtain Electric	
RELEASE DATE	10/13/2021	PART NUMBER: MC2-EL-0914	REV#
DIMENSION ARE IN INCHES & PROVIDED PRIOR TO SURFACE TREATMENTS, UNLESS NOTED.		SIZE A	EST WEIGHT:
			SHEET 3 of 22

MC2-EL-0914 - Mitter Curtain Electric



AVW EQUIPMENT CO., INC.
105 S. 9TH AVENUE
MAYWOOD, IL 60153
Tel: 708-343-7738 Fax: 708-343-9065
WWW.AVWEQUIPMENT.COM

- COMPANY PROPRIETARY NOTE -

THIS DRAWING AND ITS DESIGNS ARE PROPERTY OF AVW EQUIPMENT CO. & IT IS NOT TO BE USED OR REPRODUCED WITHOUT THE PERMISSION FROM AVW CO.

DRAWN BY

Tittu

CUSTOMER: AVW Equipment Co.

CHECKED BY

PROJECT: MC2-Full Mitter Hydraulic

QTY

DESCRIPTION: Mitter Curtain Electric

RELEASE DATE

10/13/2021

PART NUMBER: MC2-EL-0914

REV#

DIMENSION ARE IN INCHES & PROVIDED PRIOR TO SURFACE TREATMENTS, UNLESS NOTED.

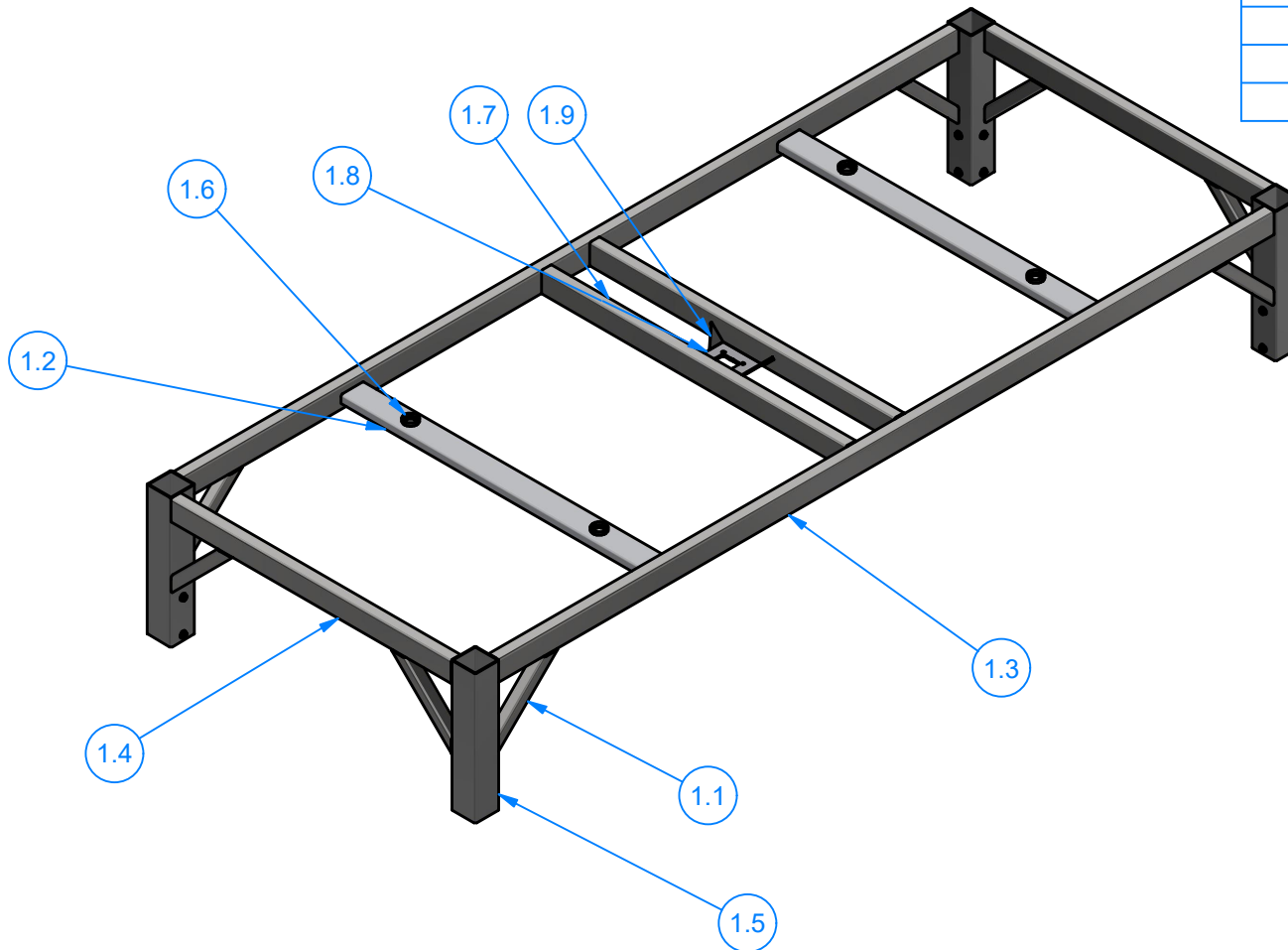
SIZE A

EST WEIGHT:

SHEET 4 of 22

MC2BA-EL-0914 - Full Mitter Top Frame Electric

Parts List		
ITEM	QTY	DESCRIPTION
1.1	8	Sq. Tube #11Ga. 2" x 2" x 16" LG
1.2	2	Plate #3/16" x 56 1/2" x 6 1/2" SS
1.3	2	Rect. Tube #7Ga. 2" x 4" x 144" LG.
1.4	2	Rect. Tube #7Ga. 2" x 4" x 52" LG.
1.5	4	Sleeve 4 1/2" SQ. x 24" LG.
1.6	4	2" Pipe Ring (1/2" Height)
1.7	2	Rect. Tube 7Ga. 2" x 4" x 56 1/2" LG.
1.8	1	SS Plate #3/8"x 7"x 7"
1.9	4	Sheet Metal #7Ga x 2 1/2" x 3"



AVW EQUIPMENT CO., INC.
105 S. 9TH AVENUE
MAYWOOD, IL 60153
Tel: 708-343-7738 Fax: 708-343-9065
WWW.AVWEQUIPMENT.COM

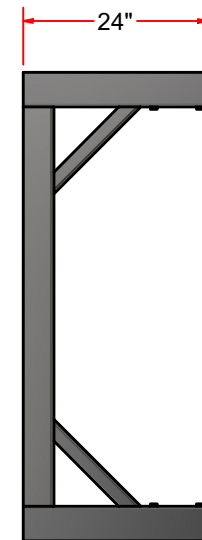
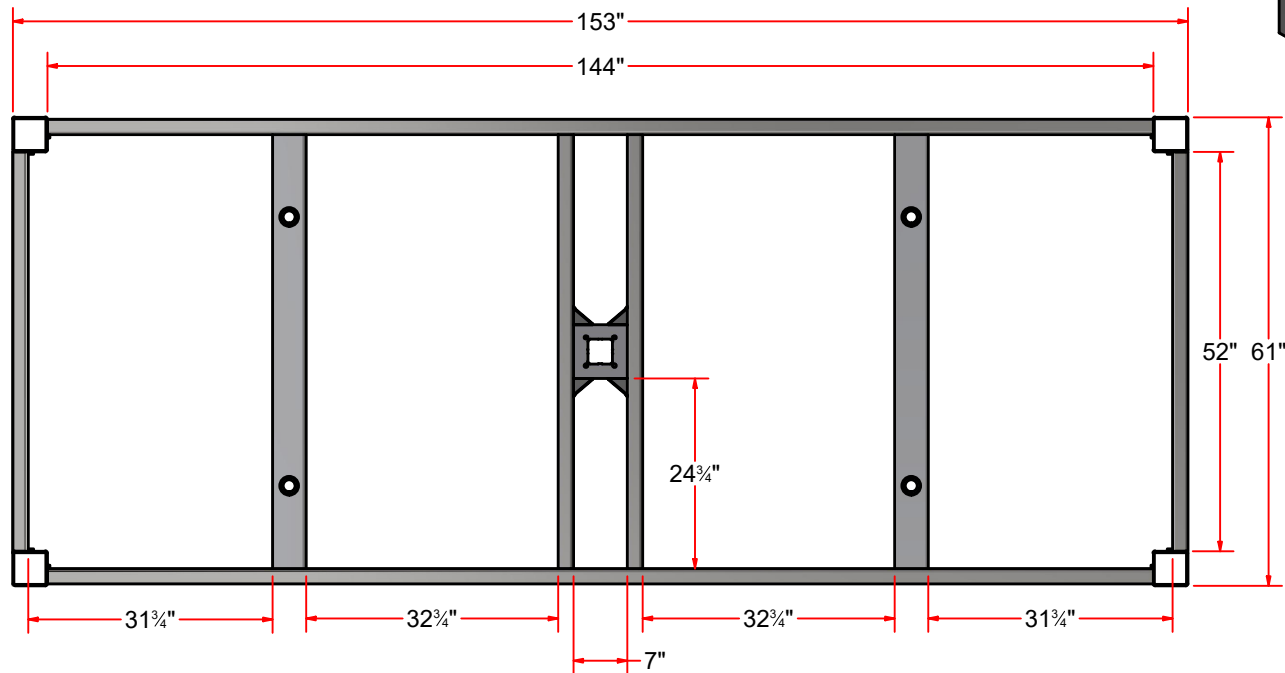
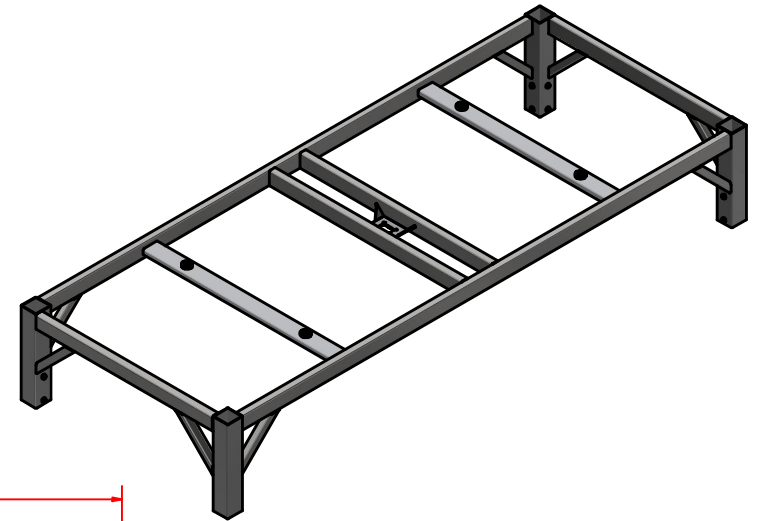
- COMPANY PROPRIETARY NOTE -

THIS DRAWING AND ITS DESIGNS ARE PROPERTY OF AVW EQUIPMENT CO. & IT IS NOT TO BE USED OR REPRODUCED WITHOUT THE PERMISSION FROM AVW CO.

DRAWN BY	Tittu	CUSTOMER: AVW Equipment Co.	
CHECKED BY		PROJECT: MC2-Full Mitter Hydraulic	
QTY		DESCRIPTION: Full Mitter Top Frame Electric	
RELEASE DATE	10/13/2021	PART NUMBER: MC2BA-EL-0914	REV#
DIMENSION ARE IN INCHES & PROVIDED PRIOR TO SURFACE TREATMENTS, UNLESS NOTED.		SIZE A	EST WEIGHT:
			SHEET 5 of 22

PATH:L:\Libraries\Productivity\Frames\Mitter Top Frames\Full Mitter Top Frames\Full Mitter Top Frame Electric\Full Mitter Top Frame Electric.lam

MC2BA-EL-0914 - Full Mitter Top Frame Electric



AVW EQUIPMENT CO., INC.
105 S. 9TH AVENUE
MAYWOOD, IL 60153
Tel: 708-343-7738 Fax: 708-343-9065
WWW.AVWEQUIPMENT.COM

- COMPANY PROPRIETARY NOTE -

THIS DRAWING AND ITS DESIGNS ARE PROPERTY OF AVW EQUIPMENT CO. & IT IS NOT TO BE USED OR REPRODUCED WITHOUT THE PERMISSION FROM AVW CO.

DRAWN BY

Tittu

CUSTOMER: AVW Equipment Co.

CHECKED BY

PROJECT: MC2-Full Mitter Hydraulic

QTY

DESCRIPTION: Full Mitter Top Frame Electric

RELEASE DATE

10/13/2021

PART NUMBER: MC2BA-EL-0914

REV#

DIMENSION ARE IN INCHES & PROVIDED PRIOR TO SURFACE TREATMENTS, UNLESS NOTED.

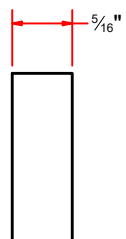
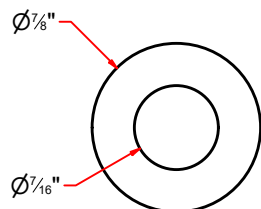
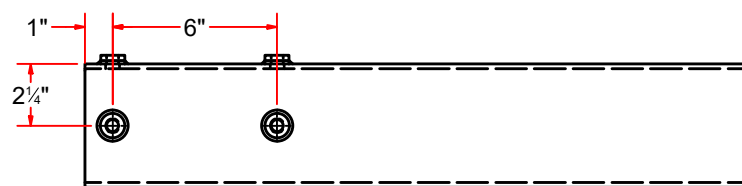
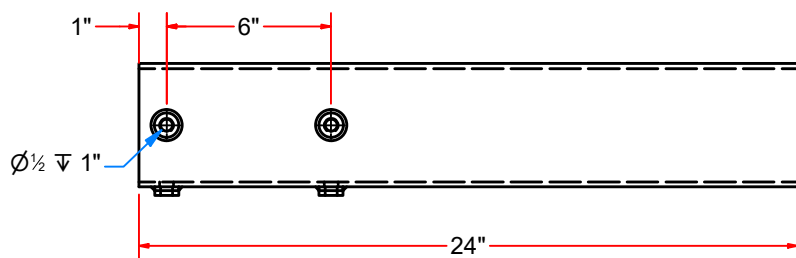
SIZE
A

EST WEIGHT:

SHEET 6 of 22

PATH:L:\Libraries\Productivity\Frames\Mitter Top Frames\Full Mitter Top Frames\Full Mitter Top Frame Electric\Full Mitter Top Frame Electric.iam

WA1CC - Sleeve 4 1/2" SQ. x 24" LG.

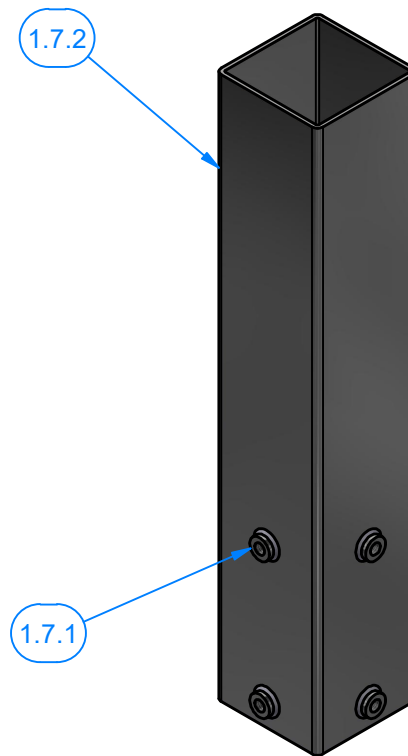


NOTES:

- 1) WELD NUTS AS SHOWN.
- 2) DRILL THRU SLEEVE USING NUTS AS GUIDE.
- 3) TAP 1/2"-13 THRU ALL HOLES

Parts List

ITEM	QTY	DESCRIPTION
1.7.1	4	Sleeve Nut 1/2"
1.7.2	1	Sq.Tubing [7 Ga.] 4 1/2" x 24" LG



AVW EQUIPMENT CO., INC.
105 S. 9TH AVENUE
MAYWOOD, IL 60153
Tel: 708-343-7738 Fax: 708-343-9065
WWW.AVWEQUIPMENT.COM

- COMPANY PROPRIETARY NOTE -

THIS DRAWING AND ITS DESIGNS ARE PROPERTY OF AVW EQUIPMENT CO. & IT IS NOT TO BE USED OR REPRODUCED WITHOUT THE PERMISSION FROM AVW CO.

PATH:L:\Libraries\AVW Components\Sleeve Nut(D7_8) -5_16-01.jpt

DRAWN BY

Tittu

CUSTOMER: AVW Equipment Co.

CHECKED BY

PROJECT: MC2-Full Mitter Hydraulic

QTY

DESCRIPTION: Sleeve Nut #5/16" x 7/8"OD x 7/16"ID

RELEASE DATE

10/13/2021

PART NUMBER: (D7_8) -5_16-01

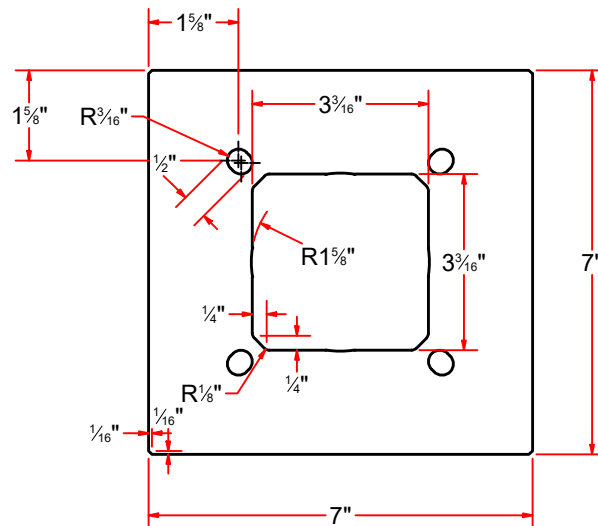
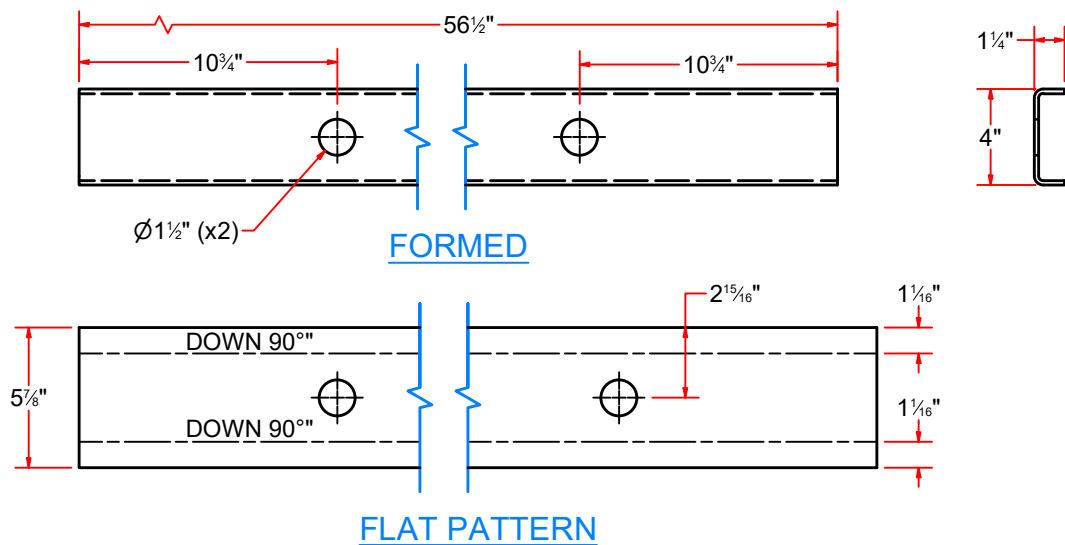
REV#


DIMENSION ARE IN INCHES & PROVIDED PRIOR TO SURFACE TREATMENTS, UNLESS NOTED.

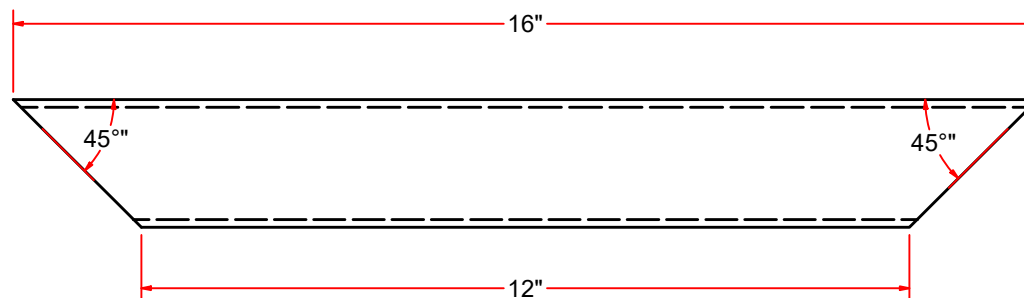
SIZE
A


EST WEIGHT:

SHEET 7 of 22

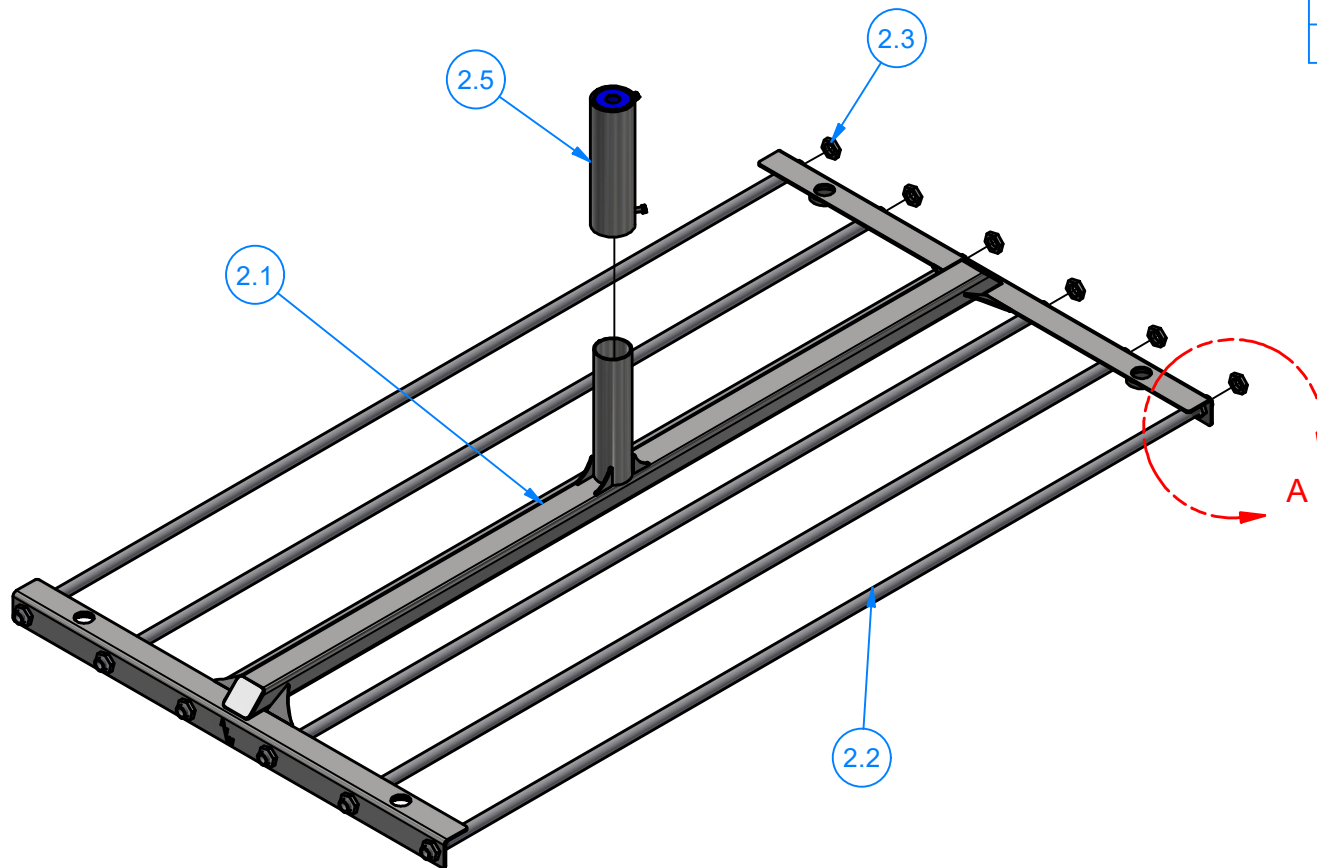


 <p>AVW EQUIPMENT CO., INC. 105 S. 9TH AVENUE MAYWOOD, IL 60153 Tel: 708-343-7738 Fax: 708-343-9065 WWW.AVWEQUIPMENT.COM</p>	DRAWN BY	Tittu	CUSTOMER: AVW Equipment Co.		
	CHECKED BY		PROJECT: MC2-Full Mitter Hydraulic		
	QTY		DESCRIPTION: Plate #3/16" x 56 1/2" x 6" SS		
<p>- COMPANY PROPRIETARY NOTE - THIS DRAWING AND ITS DESIGNS ARE PROPERTY OF AVW EQUIPMENT CO. & IT IS NOT TO BE USED OR REPRODUCED WITHOUT THE PERMISSION FROM AVW CO.</p>	RELEASE DATE	10/13/2021	PART NUMBER: MC2BAC		REV#
	DIMENSION ARE IN INCHES & PROVIDED PRIOR TO SURFACE TREATMENTS, UNLESS NOTED.		SIZE A	EST WEIGHT:	SHEET 8 of 22
PATH: L:\Libraries\Productivity\Frames\Mitter Top Frames\Full Mitter Top Frames\Full Mitter Top Frame Hydraulic\Parts\IMMTF003.ipt					



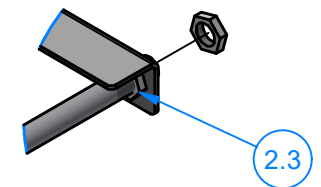
 <p>AVW EQUIPMENT CO., INC. 105 S. 9TH AVENUE MAYWOOD, IL 60153 Tel: 708-343-7738 Fax: 708-343-9065 WWW.AVWEQUIPMENT.COM</p>	DRAWN BY	Tittu	CUSTOMER: AVW Equipment Co.		
	CHECKED BY		PROJECT: MC2-Full Mitter Hydraulic		
	QTY		DESCRIPTION: Sq. Tube #11Ga. 2" x 2" x 16"LG		
<p>- COMPANY PROPRIETARY NOTE - THIS DRAWING AND ITS DESIGNS ARE PROPERTY OF AVW EQUIPMENT CO. & IT IS NOT TO BE USED OR REPRODUCED WITHOUT THE PERMISSION FROM AVW CO.</p>	RELEASE DATE	10/13/2021	PART NUMBER: MC2BAB		REV#
	DIMENSION ARE IN INCHES & PROVIDED PRIOR TO SURFACE TREATMENTS, UNLESS NOTED.		SIZE A	EST WEIGHT:	SHEET 9 of 22
PATH: L:\Libraries\Productivity\Frames\Mitter Top Frames\Full Mitter Top Frame Hydraulic\Parts\MMTF006.ipt					

MC2D - Basket Assembly



Parts List

ITEM	QTY	DESCRIPTION
2.1	1	Full Mitter Basket Frame
2.2	6	86-1/2"L Mitter Curtain Rod
2.3	24	Plastic Hex Nut 3/4-10
2.5	1	Sleeve Assembly-Mitter Basket



DETAIL A



AVW EQUIPMENT CO., INC.
105 S. 9TH AVENUE
MAYWOOD, IL 60153
Tel: 708-343-7738 Fax: 708-343-9065
WWW.AVWEQUIPMENT.COM

- COMPANY PROPRIETARY NOTE -

THIS DRAWING AND ITS DESIGNS ARE PROPERTY OF AVW EQUIPMENT CO. & IT IS NOT TO BE USED OR REPRODUCED WITHOUT THE PERMISSION FROM AVW CO.

DRAWN BY

Tittu

CUSTOMER: AVW Equipment Co.

CHECKED BY

PROJECT: MC2-Full Mitter Hydraulic

QTY

DESCRIPTION: Basket Assembly

RELEASE DATE

10/13/2021

PART NUMBER: MC2D

REV#

DIMENSION ARE IN INCHES & PROVIDED PRIOR TO SURFACE TREATMENTS, UNLESS NOTED.

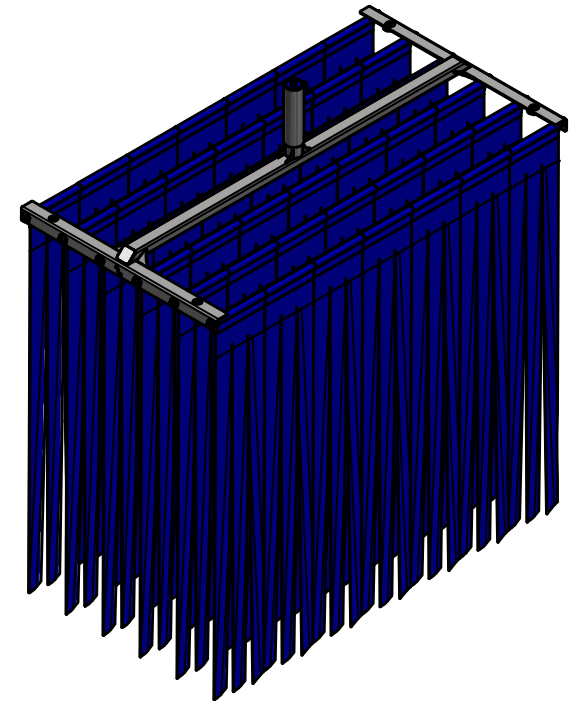
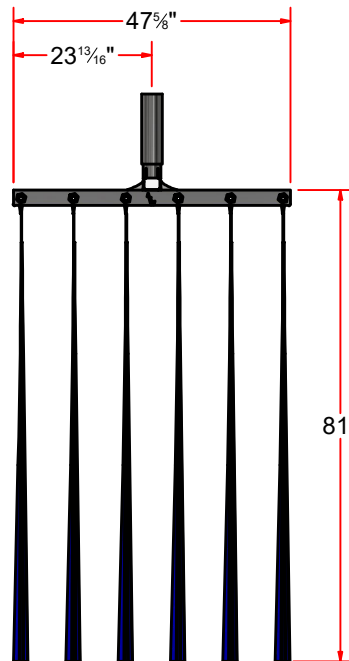
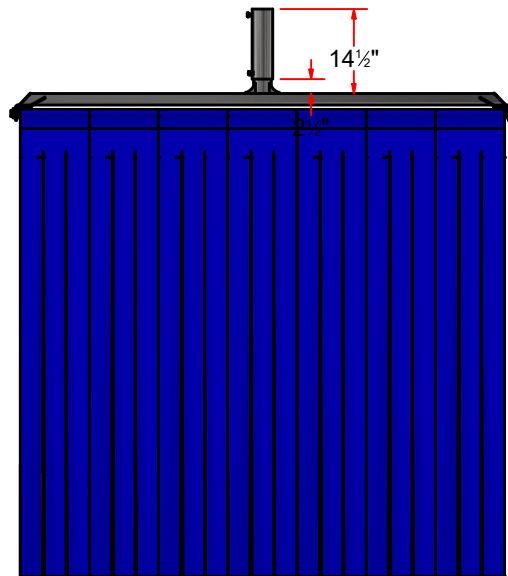
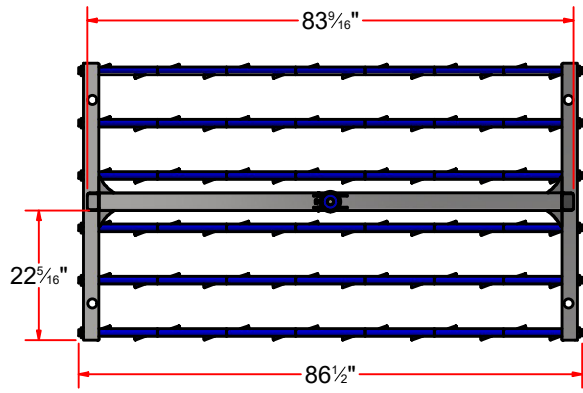
SIZE
A

EST WEIGHT:

SHEET 10 of 22

PATH: L:\Libraries\Productivity\Mitter Baskets\Standard Mitter baskets\MC2D - Full Mitter Basket\MC2D.iam

MC2D - Basket Assembly



NOTE: Curtain cloth sold separately



AVW EQUIPMENT CO., INC.
105 S. 9TH AVENUE
MAYWOOD, IL 60153
Tel: 708-343-7738 Fax: 708-343-9065
WWW.AVWEQUIPMENT.COM

- COMPANY PROPRIETARY NOTE -

THIS DRAWING AND ITS DESIGNS ARE PROPERTY OF AVW EQUIPMENT CO. & IT IS NOT TO BE USED OR REPRODUCED WITHOUT THE PERMISSION FROM AVW CO.

DRAWN BY

Tittu

CUSTOMER: AVW Equipment Co.

CHECKED BY

PROJECT: MC2-Full Mitter Hydraulic

QTY

DESCRIPTION: Basket Assembly

RELEASE DATE

10/13/2021

PART NUMBER: MC2D

REV#

DIMENSION ARE IN INCHES & PROVIDED PRIOR TO SURFACE TREATMENTS, UNLESS NOTED.

SIZE A

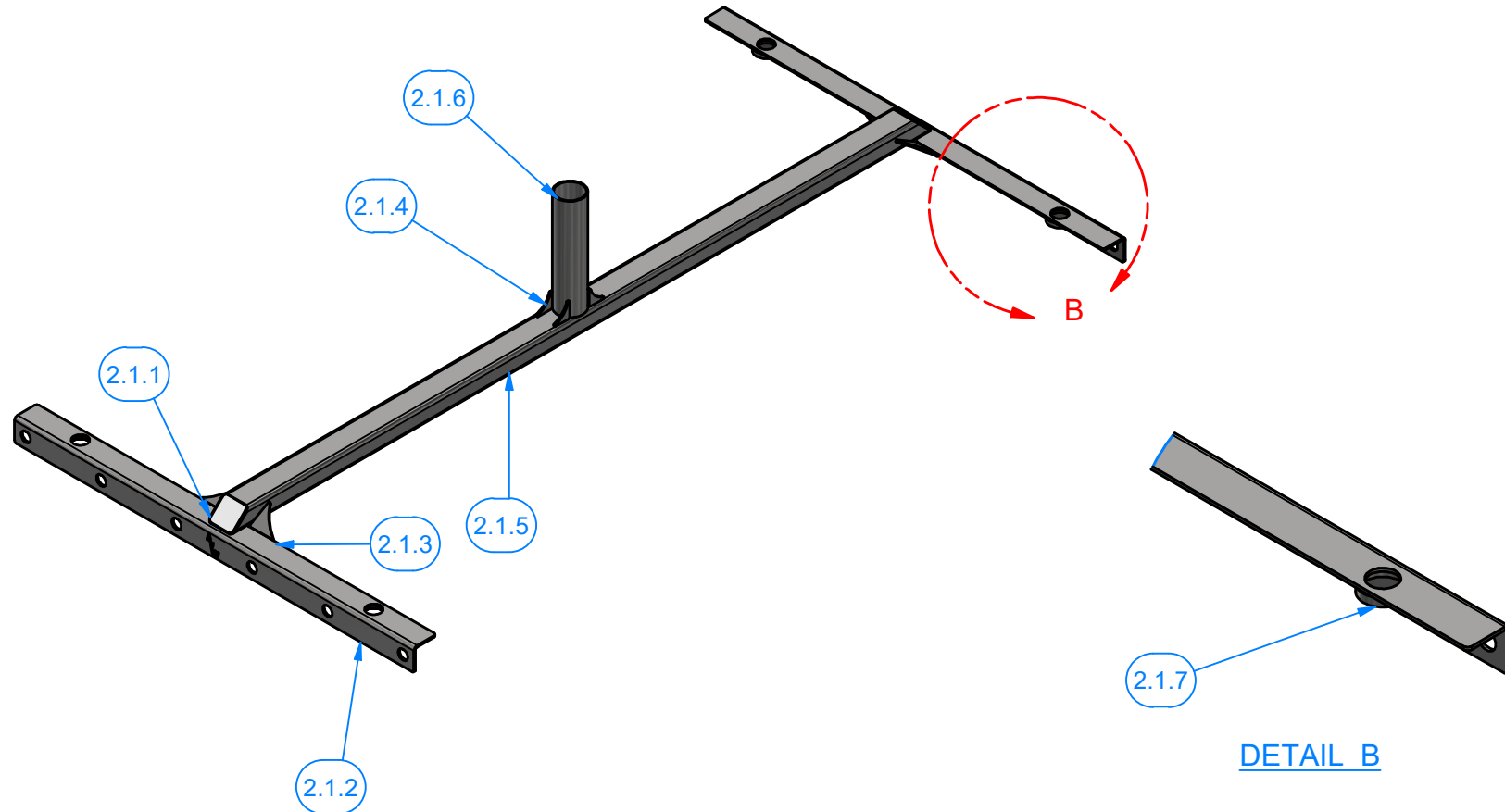
EST WEIGHT:

SHEET 11 of 22

PATH: L:\Libraries\Productivity\Mitter Baskets\Standard Mitter baskets\MC2D - Full Mitter Basket\MC2D.iam

MC2DA - Full Mitter Basket Frame

Parts List		
ITEM	QTY	DESCRIPTION
2.1.1	2	Plate #12Ga x 2-3/4 x- 2-3/4
2.1.2	2	Mitter Curtain Rod Support #3/16"x47-5/8"LG
2.1.3	4	Gusset #3/16" x 2-3 4x2-3 4
2.1.4	4	Gusset #3/16" x 1 3/4" x 1 3/4"
2.1.5	1	Rect.Tube 7GAx2"x3"x83-1/2"L
2.1.6	1	Round Tubing 3" OD X .12" Wall X 12" LG
2.1.7	4	2" Pipe Ring (1/2" Height)



AVW EQUIPMENT CO., INC.
105 S. 9TH AVENUE
MAYWOOD, IL 60153
Tel: 708-343-7738 Fax: 708-343-9065
WWW.AVWEQUIPMENT.COM

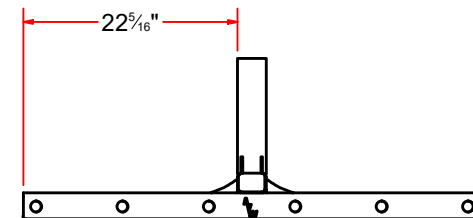
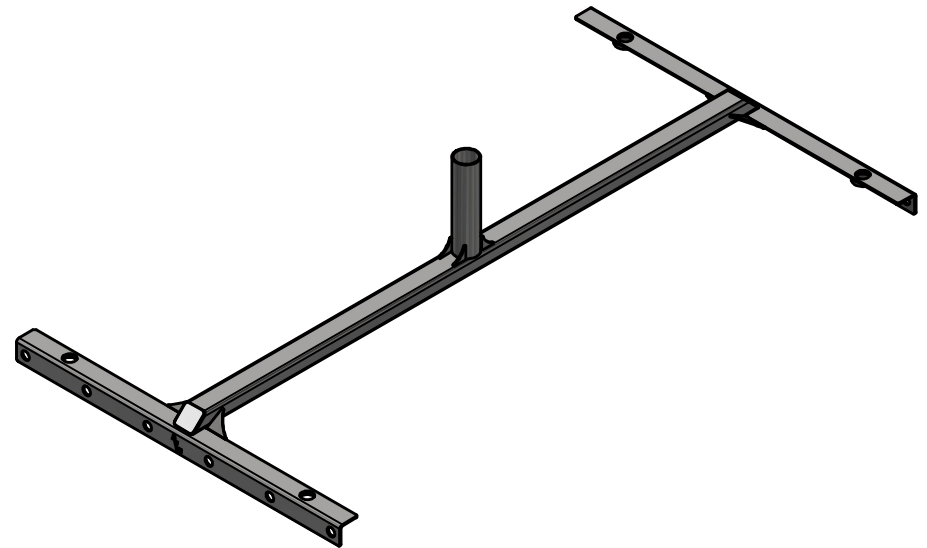
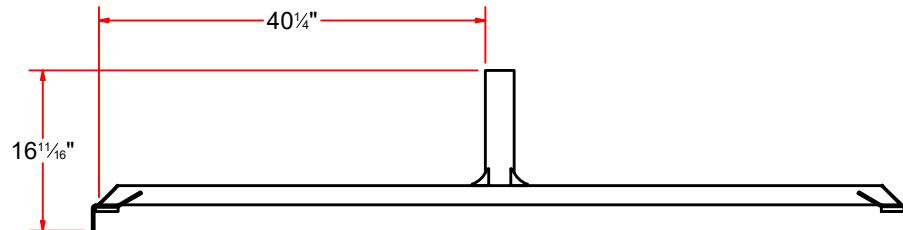
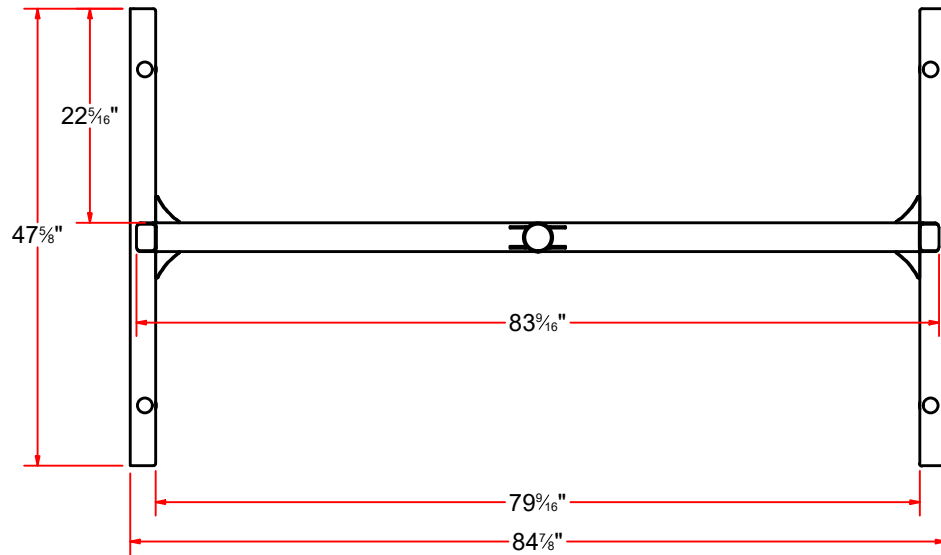
- COMPANY PROPRIETARY NOTE -

THIS DRAWING AND ITS DESIGNS ARE PROPERTY OF AVW EQUIPMENT CO. & IT IS NOT TO BE USED OR REPRODUCED WITHOUT THE PERMISSION FROM AVW CO.

DRAWN BY	Tittu	CUSTOMER: AVW Equipment Co.	
CHECKED BY		PROJECT: MC2-Full Mitter Hydraulic	
QTY		DESCRIPTION: Full Mitter Basket Frame	
RELEASE DATE	10/13/2021	PART NUMBER: MC2DA	REV#
DIMENSION ARE IN INCHES & PROVIDED PRIOR TO SURFACE TREATMENTS, UNLESS NOTED.		SIZE A	EST WEIGHT:
			SHEET 12 of 22

PATH:L:\Libraries\Productivity\Mitter Baskets\Standard Mitter baskets\MC2D - Full Mitter Basket\Parts\MC2DA - Full Mitter Basket Frame\MC2DA.iam

MC2DA - Full Mitter Basket Frame



AVW EQUIPMENT CO., INC.
105 S. 9TH AVENUE
MAYWOOD, IL 60153
Tel: 708-343-7738 Fax: 708-343-9065
WWW.AVWEQUIPMENT.COM

- COMPANY PROPRIETARY NOTE -

THIS DRAWING AND ITS DESIGNS ARE PROPERTY OF AVW EQUIPMENT CO. & IT IS NOT TO BE USED OR REPRODUCED WITHOUT THE PERMISSION FROM AVW CO.

DRAWN BY

Tittu

CUSTOMER: AVW Equipment Co.

CHECKED BY

PROJECT: MC2-Full Mitter Hydraulic

QTY

DESCRIPTION: Full Mitter Basket Frame

RELEASE DATE

10/13/2021

PART NUMBER: MC2DA

REV#

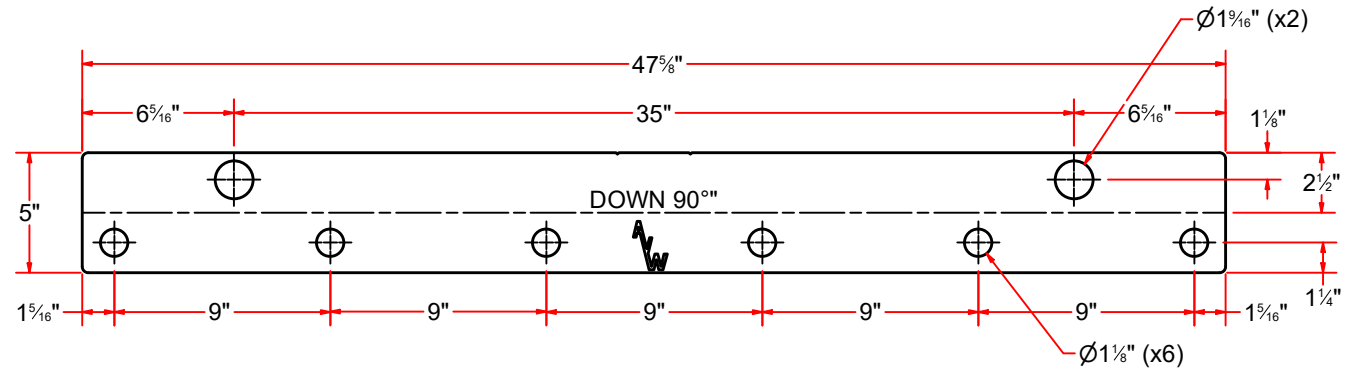
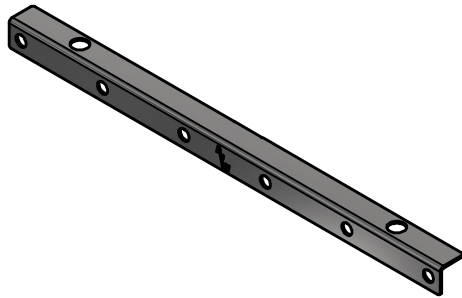
DIMENSION ARE IN INCHES & PROVIDED PRIOR TO SURFACE TREATMENTS, UNLESS NOTED.

SIZE
A

EST WEIGHT:

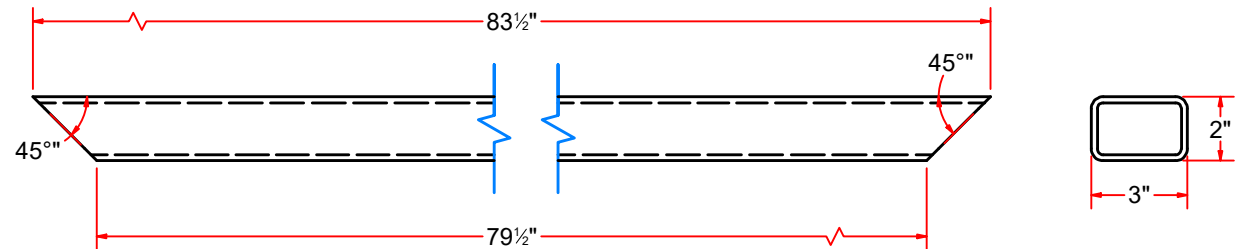
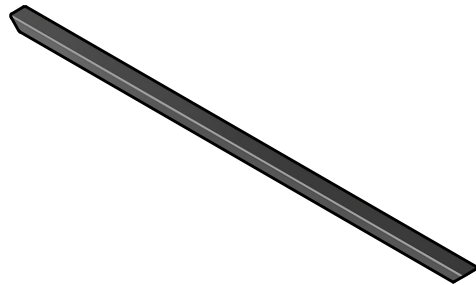
SHEET 13 of 22

PATH: L:\Libraries\Productivity\Mitter Baskets\Standard Mitter baskets\MC2D - Full Mitter Basket\Parts\MC2DA - Full Mitter Basket Frame\MC2DA.iam



Mitter Curtain Rod Support #3/16"x47-5/8"LG

FLAT PATTERN



Rect. Tube 7GAx2"x3"x83-1/2"L



AVW EQUIPMENT CO., INC.
105 S. 9TH AVENUE
MAYWOOD, IL 60153
Tel: 708-343-7738 Fax: 708-343-9065
WWW.AVWEQUIPMENT.COM

- COMPANY PROPRIETARY NOTE -

THIS DRAWING AND ITS DESIGNS ARE PROPERTY OF AVW EQUIPMENT CO. & IT IS NOT TO BE USED OR REPRODUCED WITHOUT THE PERMISSION FROM AVW CO.

DRAWN BY

Tittu

CUSTOMER: AVW Equipment Co.

CHECKED BY

PROJECT: MC2-Full Mitter Hydraulic

QTY

DESCRIPTION: Mitter Curtain Rod Support #3/16"x47-5/8"LG

RELEASE DATE

10/13/2021

PART NUMBER: MC2DAA

REV#

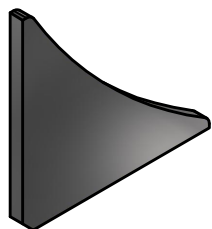
DIMENSION ARE IN INCHES & PROVIDED PRIOR TO SURFACE TREATMENTS, UNLESS NOTED.

SIZE
A

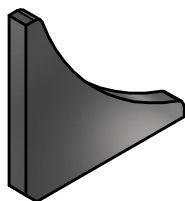
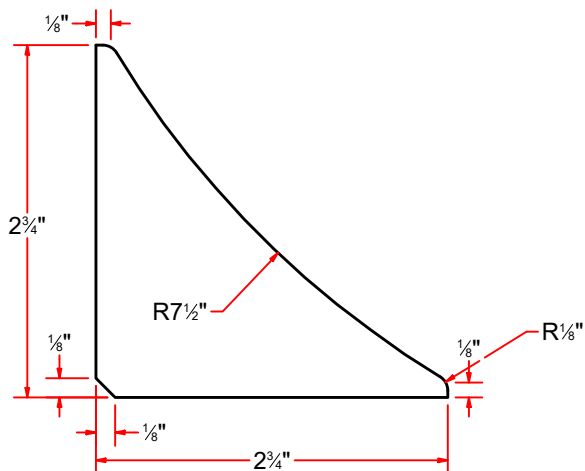
EST WEIGHT:

SHEET 14 of 22

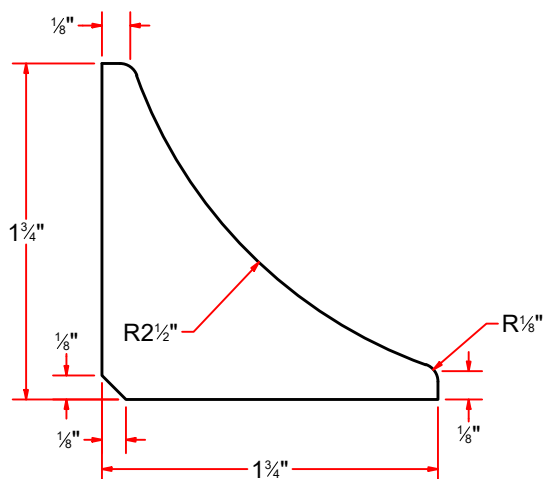
PATH:L:\Libraries\Productivity\Mitter Baskets\Standard Mitter baskets\MC2D - Full Mitter Basket\Parts\MC2DA - Full Mitter Basket Frame\Parts\MC2DAA.ipt



Gusset #3/16" x 2-3 4x2-3 4



Gusset #3/16" x 1 3/4" x 1 3/4"



AVW EQUIPMENT CO., INC.
105 S. 9TH AVENUE
MAYWOOD, IL 60153
Tel: 708-343-7738 Fax: 708-343-9065
WWW.AVWEQUIPMENT.COM

- COMPANY PROPRIETARY NOTE -

THIS DRAWING AND ITS DESIGNS ARE PROPERTY OF AVW EQUIPMENT CO. & IT IS NOT TO BE USED OR REPRODUCED WITHOUT THE PERMISSION FROM AVW CO.

DRAWN BY

Tittu

CUSTOMER: AVW Equipment Co.

CHECKED BY

PROJECT: MC2-Full Mitter Hydraulic

QTY

DESCRIPTION: Gusset #3/16" x 2-3 4x2-3 4

RELEASE
DATE

10/13/2021

PART NUMBER: GUSSS187X0275X0275

REV#

DIMENSION ARE IN INCHES & PROVIDED PRIOR
TO SURFACE TREATMENTS, UNLESS NOTED.

SIZE
A

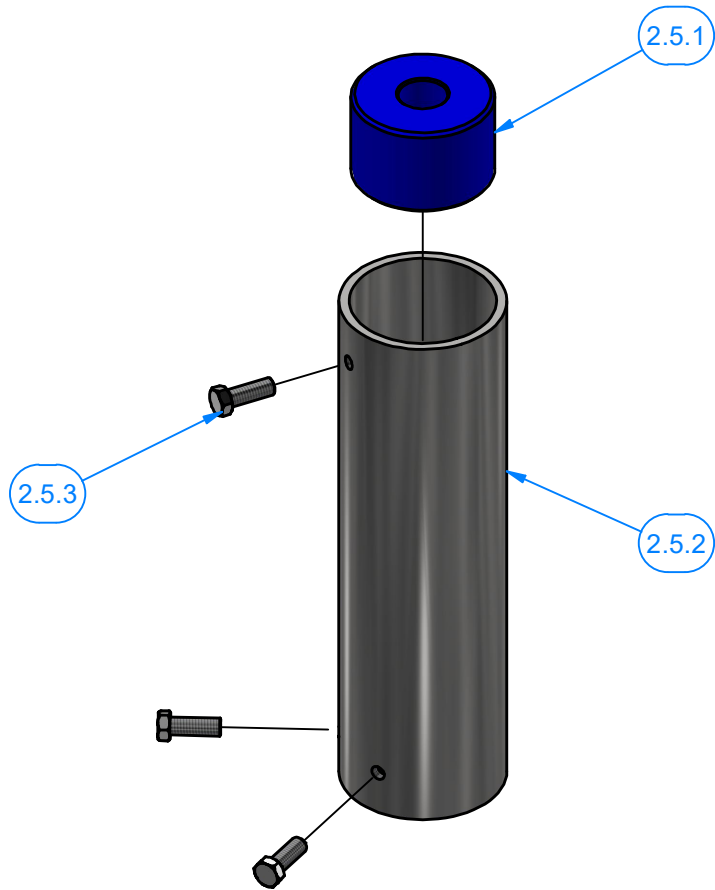
EST WEIGHT:

SHEET 15 of 22

PATH:L:\Libraries\AVW Components\Plates\Gussetts\Wrap Arm Rubber Stopper Gusset (2-3_4 x 2-3_4).ipt

MC1DB - Sleeve Assembly-Mitter Basket

Parts List		
ITEM	QTY	DESCRIPTION
2.5.1	1	UHMW Bushing 3" O.D. X 1" I.D.
2.5.2	1	3" Pipe #Sch40 x 12" LG.
2.5.3	3	3/8" - 16 x 1" UNC Hex Screw



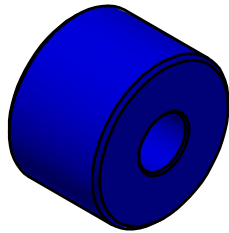
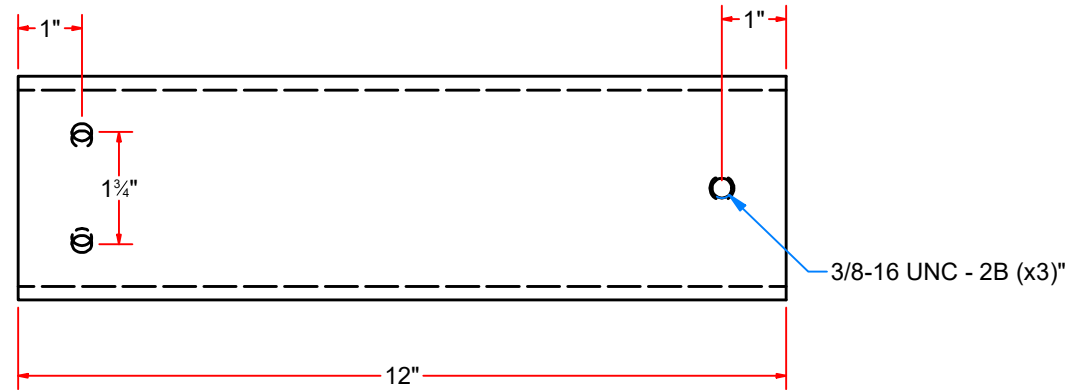
AVW EQUIPMENT CO., INC.
105 S. 9TH AVENUE
MAYWOOD, IL 60153
Tel: 708-343-7738 Fax: 708-343-9065
WWW.AVWEQUIPMENT.COM

- COMPANY PROPRIETARY NOTE -
THIS DRAWING AND ITS DESIGNS ARE PROPERTY OF AVW EQUIPMENT CO. &
IT IS NOT TO BE USED OR REPRODUCED WITHOUT THE PERMISSION FROM AVW CO.

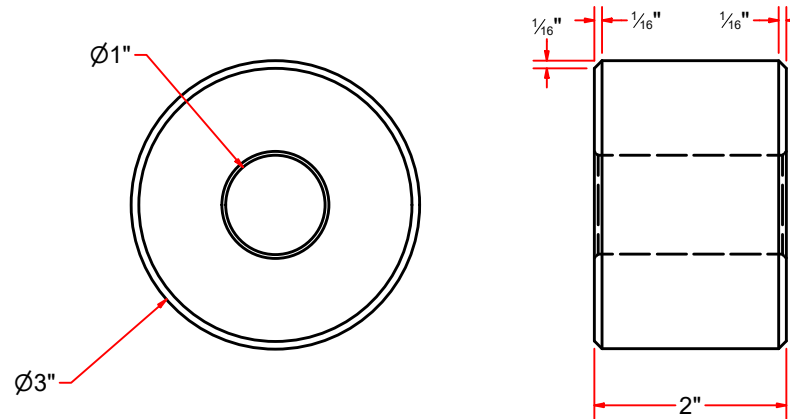
DRAWN BY	Tittu	CUSTOMER: AVW Equipment Co.	
CHECKED BY		PROJECT: MC2-Full Mitter Hydraulic	
QTY		DESCRIPTION: Sleeve Assembly-Mitter Basket	
RELEASE DATE	10/13/2021	PART NUMBER: MC1DB	REV#
DIMENSION ARE IN INCHES & PROVIDED PRIOR TO SURFACE TREATMENTS, UNLESS NOTED.		SIZE A	EST WEIGHT:
			SHEET 16 of 22




3" Pipe #Sch40 x 12" LG.



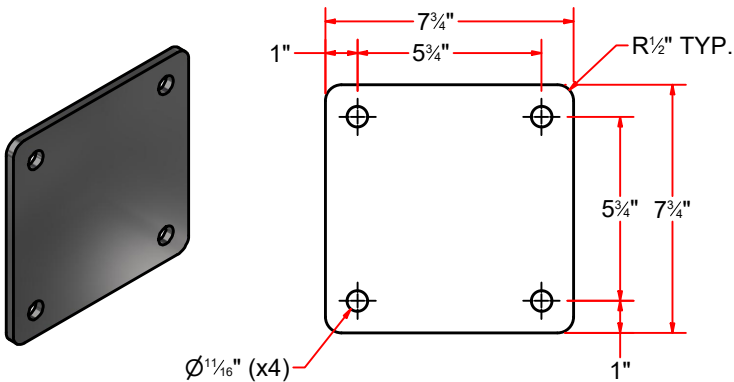
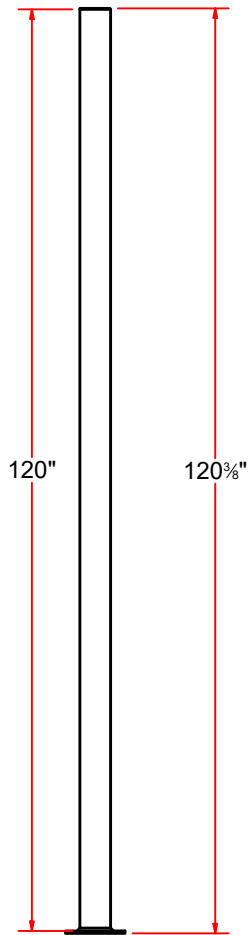
UHMW Bushing 3" O.D. X 1" I.D.



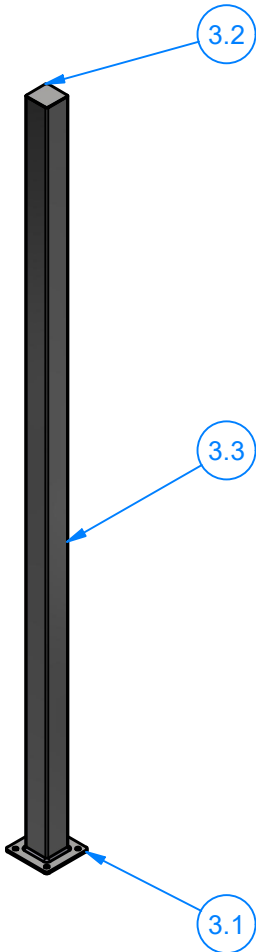
 <div>AVW EQUIPMENT CO., INC. 105 S. 9TH AVENUE MAYWOOD, IL 60153 Tel: 708-343-7738 Fax: 708-343-9065 WWW.AVWEQUIPMENT.COM</div>	DRAWN BY	Tittu	CUSTOMER: AVW Equipment Co.		
	CHECKED BY		PROJECT: MC2-Full Mitter Hydraulic		
	QTY		DESCRIPTION: 3" Pipe #Sch40 x 12" LG.		
<div>- COMPANY PROPRIETARY NOTE - THIS DRAWING AND ITS DESIGNS ARE PROPERTY OF AVW EQUIPMENT CO. & IT IS NOT TO BE USED OR REPRODUCED WITHOUT THE PERMISSION FROM AVW CO.</div>	RELEASE DATE	10/13/2021	PART NUMBER: MC2DB1		REV#
	DIMENSION ARE IN INCHES & PROVIDED PRIOR TO SURFACE TREATMENTS, UNLESS NOTED.		SIZE A	EST WEIGHT:	SHEET 17 of 22
	PATH:L:\Libraries\Productivity\Mitter Baskets\Standard Mitter baskets\MC2D - Full Mitter Basket\Parts\MC2DA - Full Mitter Basket Frame\Parts\MC2DAD.ipt				

MC1A - Stand. 120" Leg Assembly

Parts List		
ITEM	QTY	DESCRIPTION
3.1	1	SS Plate #5/16" x 7-3/4" x 7-3/4"
3.2	1	SQ Plate 14Ga x 3 15/16
3.3	1	Sq. Tubing [7 Gauge] 4" x 120" LG



SS Plate #5/16" x 7-3/4" x 7-3/4"

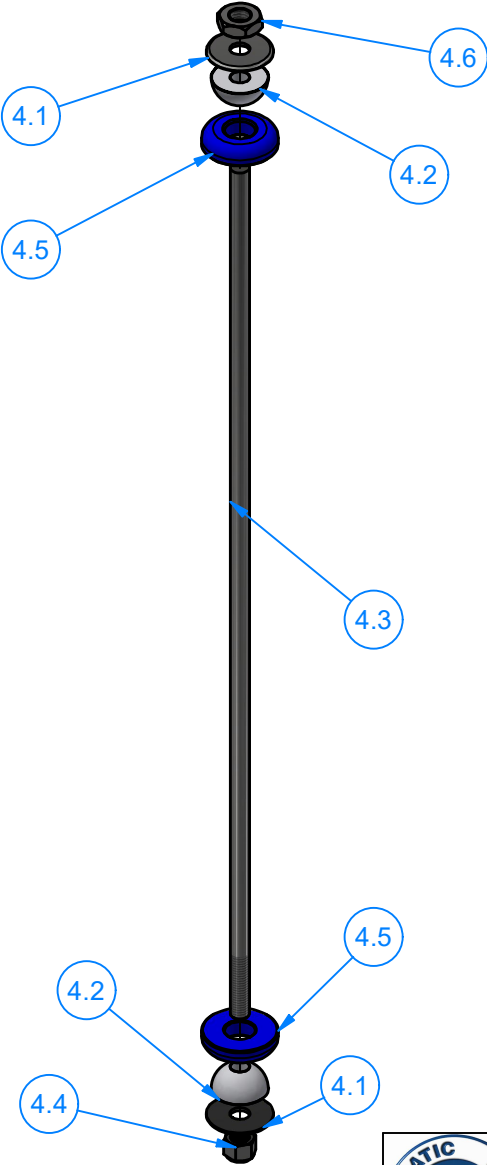


AVW EQUIPMENT CO., INC.
105 S. 9TH AVENUE
MAYWOOD, IL 60153
Tel: 708-343-7738 Fax: 708-343-9065
WWW.AVWEQUIPMENT.COM

- COMPANY PROPRIETARY NOTE -
THIS DRAWING AND ITS DESIGNS ARE PROPERTY OF AVW EQUIPMENT CO. &
IT IS NOT TO BE USED OR REPRODUCED WITHOUT THE PERMISSION FROM AVW CO.

DRAWN BY	Tittu	CUSTOMER: AVW Equipment Co.	
CHECKED BY		PROJECT: MC2-Full Mitter Hydraulic	
QTY		DESCRIPTION: Stand. 120" Leg Assembly	
RELEASE DATE	10/13/2021	PART NUMBER: MC1A	REV#
DIMENSION ARE IN INCHES & PROVIDED PRIOR TO SURFACE TREATMENTS, UNLESS NOTED.		SIZE A	EST WEIGHT:
			SHEET 18 of 22

MC1C - Basket Support Rod Assembly - 27" LG



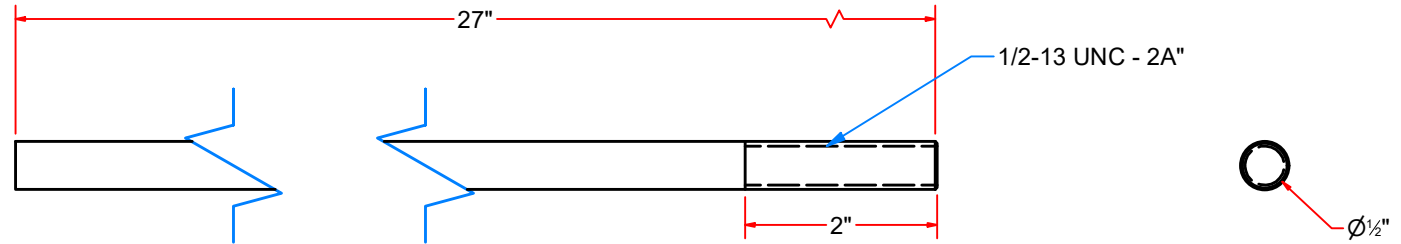
Parts List		
ITEM	QTY	DESCRIPTION
4.1	2	1/2" Large Washer
4.2	2	Basket Support Half-Disc
4.3	1	Basket Support Rod 1/2in x 27in LG
4.4	1	1/2"-13 Nylon Lock Nut
4.5	2	UHMW - Basket Support Disk
4.6	1	5/8"-11 18-8ss Heavy Hex Jam Nut



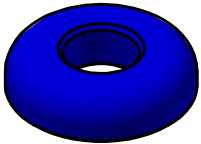
AVW EQUIPMENT CO., INC.
105 S. 9TH AVENUE
MAYWOOD, IL 60153
Tel: 708-343-7738 Fax: 708-343-9065
WWW.AVWEQUIPMENT.COM

- COMPANY PROPRIETARY NOTE -
THIS DRAWING AND ITS DESIGNS ARE PROPERTY OF AVW EQUIPMENT CO. &
IT IS NOT TO BE USED OR REPRODUCED WITHOUT THE PERMISSION FROM AVW CO.

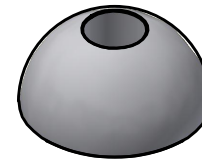
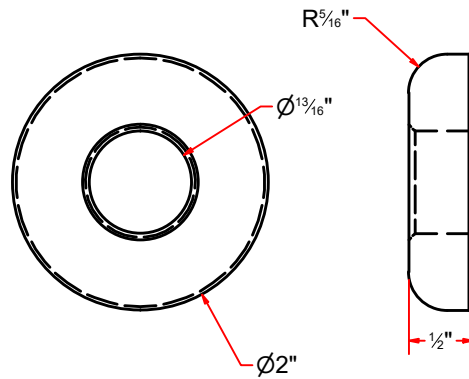
DRAWN BY	Tittu	CUSTOMER: AVW Equipment Co.	
CHECKED BY		PROJECT: MC2-Full Mitter Hydraulic	
QTY		DESCRIPTION: Basket Support Rod Assembly - 27" LG	
RELEASE DATE	10/13/2021	PART NUMBER: MC1C	REV#
DIMENSION ARE IN INCHES & PROVIDED PRIOR TO SURFACE TREATMENTS, UNLESS NOTED.		SIZE A	EST WEIGHT:
PATH:L:\Libraries\Productivity\Mitter Parts\Mitter Rods\MC1C - Basket Support Rod Assembly.iam		SHEET 19 of 22	



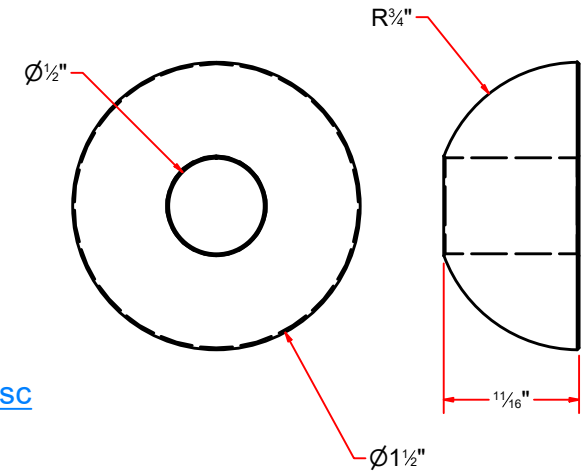
Basket Support Rod 1/2in x 27in LG



UHMW - Basket Support Disk



Basket Support Half-Disc



AVW EQUIPMENT CO., INC.
105 S. 9TH AVENUE
MAYWOOD, IL 60153
Tel: 708-343-7738 Fax: 708-343-9065
WWW.AVWEQUIPMENT.COM

- COMPANY PROPRIETARY NOTE -

THIS DRAWING AND ITS DESIGNS ARE PROPERTY OF AVW EQUIPMENT CO. & IT IS NOT TO BE USED OR REPRODUCED WITHOUT THE PERMISSION FROM AVW CO.

DRAWN BY

Tittu

CUSTOMER: AVW Equipment Co.

CHECKED BY

PROJECT: MC2-Full Mitter Hydraulic

QTY

DESCRIPTION: Basket Support Rod 1/2in x 27in LG

RELEASE DATE

10/13/2021

PART NUMBER: MC1C1

REV#

DIMENSION ARE IN INCHES & PROVIDED PRIOR TO SURFACE TREATMENTS, UNLESS NOTED.

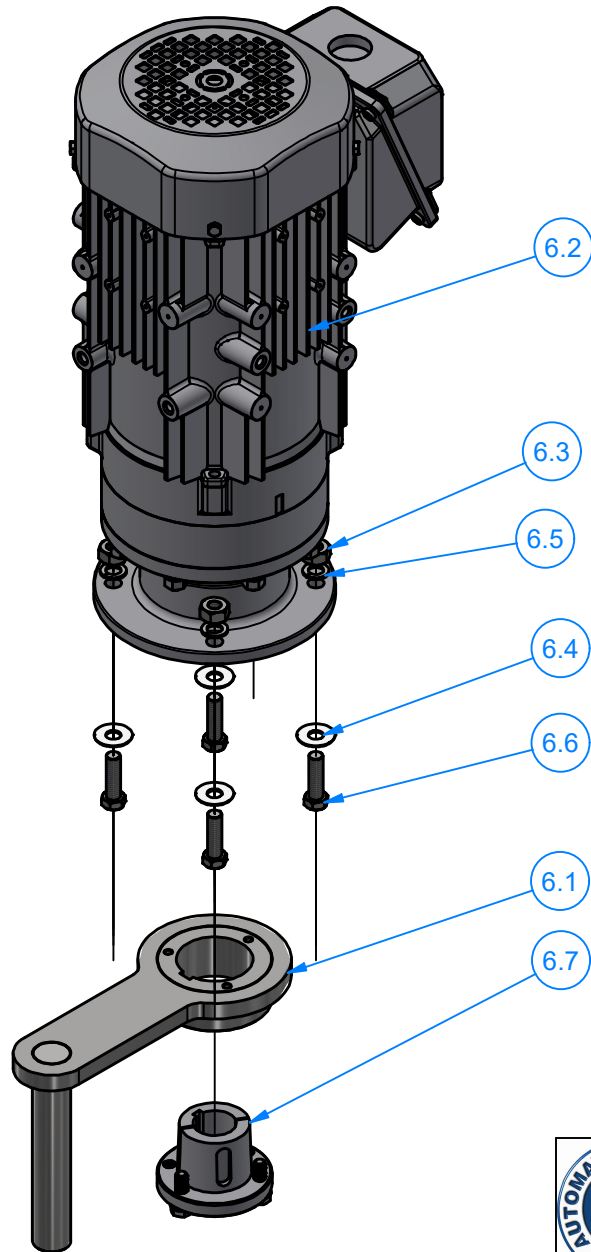
SIZE
A

EST WEIGHT:

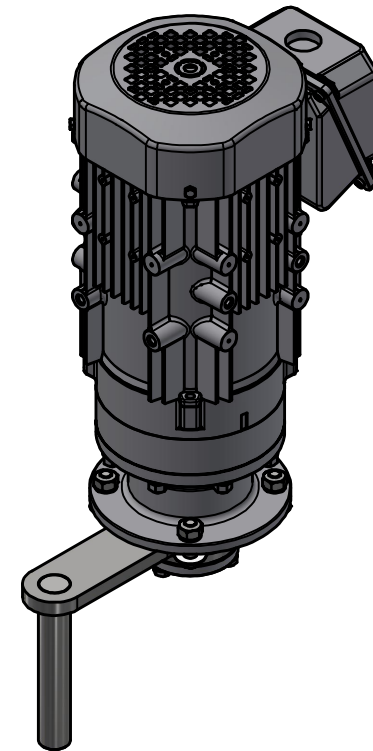
SHEET 20 of 22

PATH: L:\Libraries\Productivity\Mitter Parts\Mitter Rods\Parts\MC1C1 - Basket Support Rod 1_2in x 27in LG.ipt

MC2BB-EL-0914 - Basket Drive Assembly Electric



Parts List		
ITEM	QTY	DESCRIPTION
6.1	1	Cam Arm 6" (w/ Welded Weld-On Hub)
6.2	1	Sumitomo Gearmotor 1 1/8" Shaft
6.3	4	3/8"-16 18-8ss Heavy Hex Nut
6.4	4	3/8" Flat Washer
6.5	4	3/8" Split Lock Washer
6.6	4	3/8" - 16 x 1 1/4" UNC Hex Screw
6.7	1	P1 - 1-1/8" Bushing



AVW EQUIPMENT CO., INC.
105 S. 9TH AVENUE
MAYWOOD, IL 60153
Tel: 708-343-7738 Fax: 708-343-9065
WWW.AVWEQUIPMENT.COM

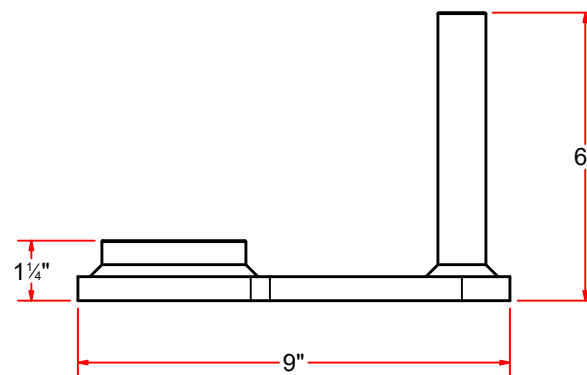
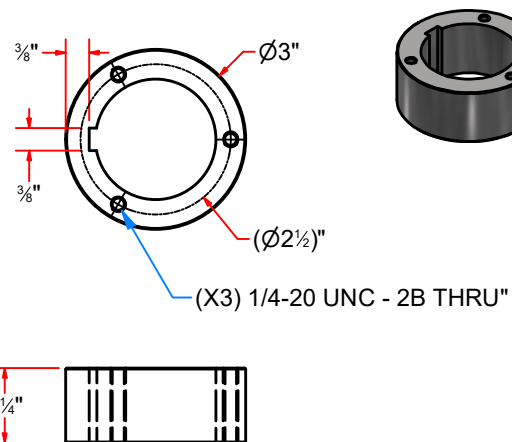
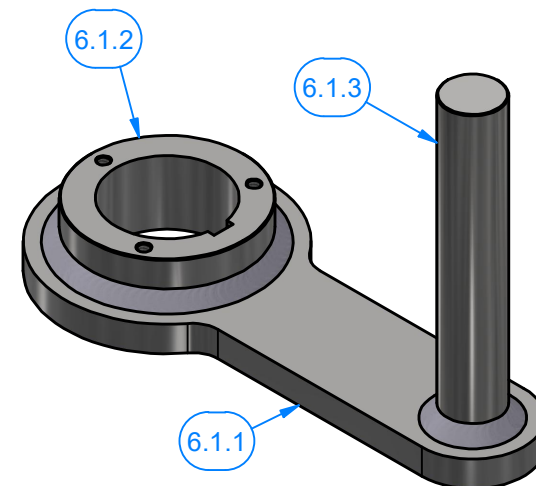
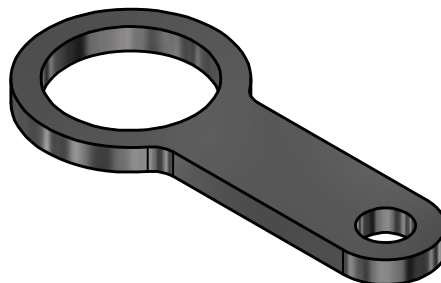
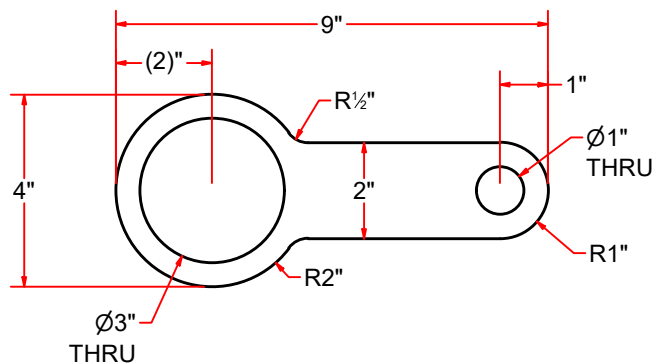
- COMPANY PROPRIETARY NOTE -

THIS DRAWING AND ITS DESIGNS ARE PROPERTY OF AVW EQUIPMENT CO. & IT IS NOT TO BE USED OR REPRODUCED WITHOUT THE PERMISSION FROM AVW CO.

DRAWN BY	Tittu	CUSTOMER: AVW Equipment Co.	
CHECKED BY		PROJECT: MC2-Full Mitter Hydraulic	
QTY		DESCRIPTION: Basket Drive Assembly Electric	
RELEASE DATE	10/13/2021	PART NUMBER: MC2BB-EL-0914	REV#
DIMENSION ARE IN INCHES & PROVIDED PRIOR TO SURFACE TREATMENTS, UNLESS NOTED.		SIZE A	EST WEIGHT:
			SHEET 21 of 22

PATH:L:\Libraries\Productivity\Motor Mounts\Electric\Mitter\Mitter Cam Assembly.iam

MC2BBA-P1-0615 - Cam Arm 6" (w/ Welded Weld-On Hub)



Parts List		
ITEM	QTY	DESCRIPTION
6.1.1	1	Plate #1/2" x 9" x 4"
6.1.2	1	Hub - Cam Arm
6.1.3	1	Rod 1" OD x 6" LG.



AVW EQUIPMENT CO., INC.
105 S. 9TH AVENUE
MAYWOOD, IL 60153
Tel: 708-343-7738 Fax: 708-343-9065
WWW.AVWEQUIPMENT.COM

- COMPANY PROPRIETARY NOTE -

THIS DRAWING AND ITS DESIGNS ARE PROPERTY OF AVW EQUIPMENT CO. & IT IS NOT TO BE USED OR REPRODUCED WITHOUT THE PERMISSION FROM AVW CO.

DRAWN BY

Tittu

CUSTOMER: AVW Equipment Co.

CHECKED BY

PROJECT: MC2-Full Mitter Hydraulic

QTY

DESCRIPTION: Cam Arm 6" (w/ Welded Weld-On Hub)

RELEASE DATE

10/13/2021

PART NUMBER: MC2BBA-P1-0615

REV#

DIMENSION ARE IN INCHES & PROVIDED PRIOR TO SURFACE TREATMENTS, UNLESS NOTED.

SIZE A

EST WEIGHT:

SHEET 22 of 22

PATH:L:\Libraries\AVW Components\Cam Arm\Cam Arm 6in\MC2BBA-P1-0615.iam