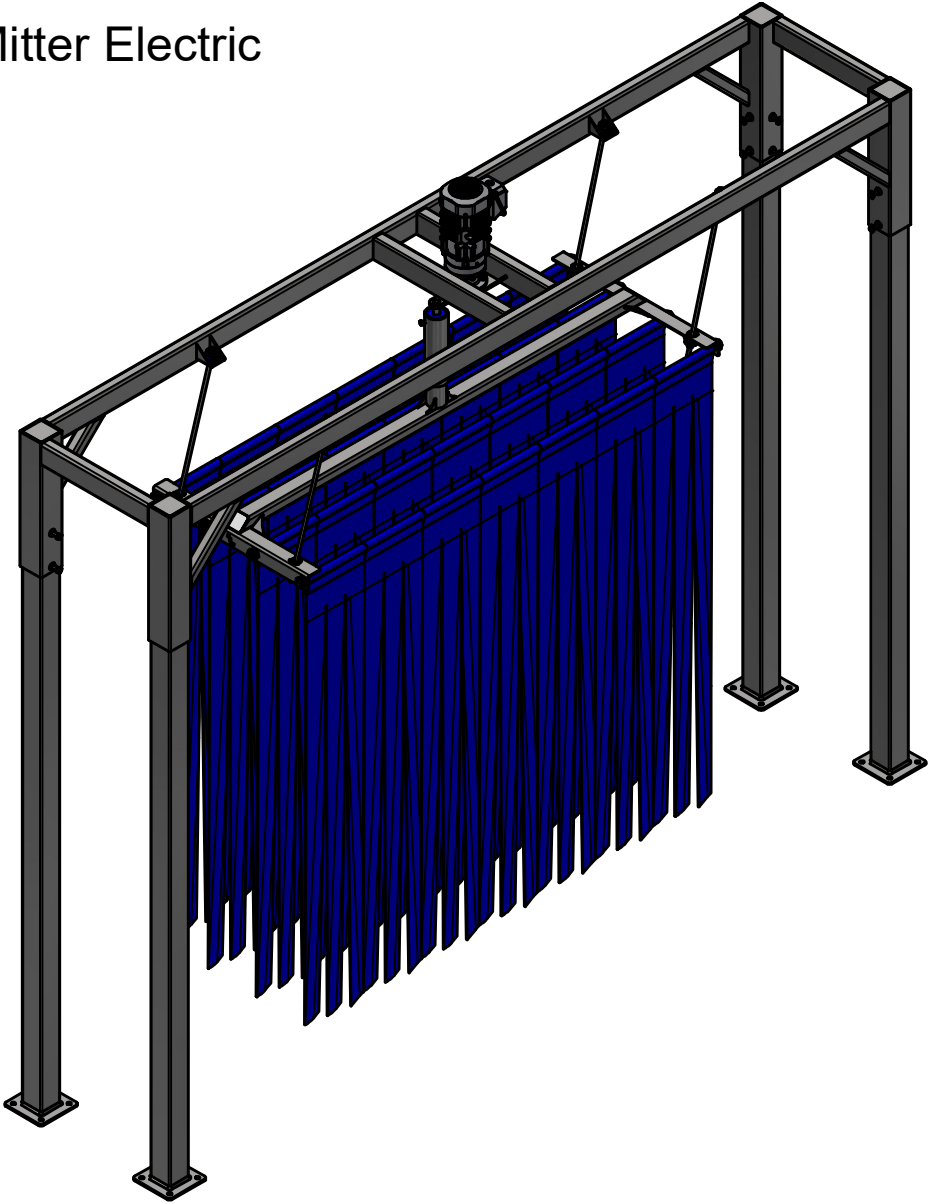


# MM5-EL-0914 - Mini Mitter Electric

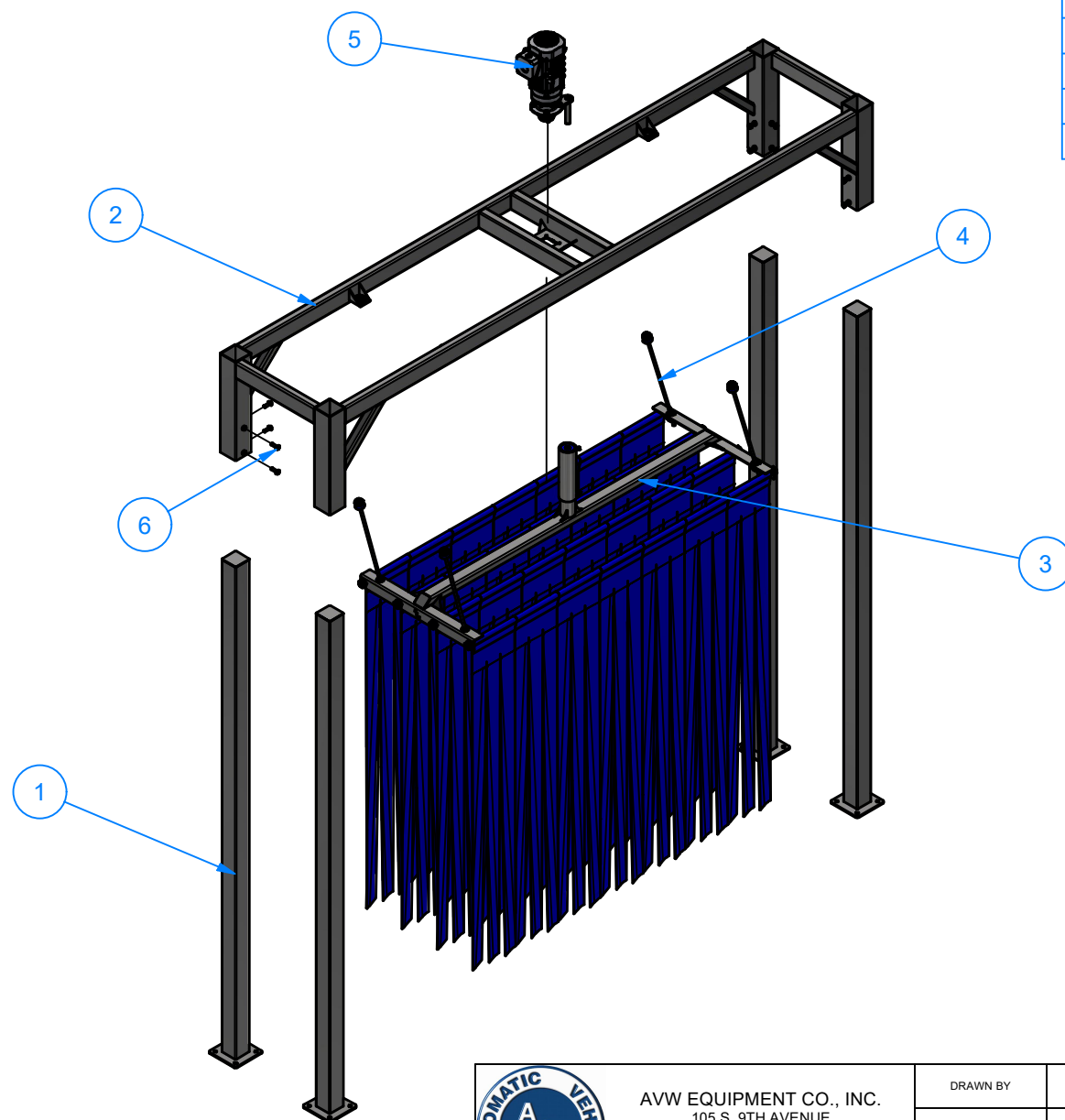


AVW EQUIPMENT CO., INC.  
105 S. 9TH AVENUE  
MAYWOOD, IL 60153  
Tel: 708-343-7738 Fax: 708-343-9065  
WWW.AVWEQUIPMENT.COM

**- COMPANY PROPRIETARY NOTE -**  
THIS DRAWING AND ITS DESIGNS ARE PROPERTY OF AVW EQUIPMENT CO. &  
IT IS NOT TO BE USED OR REPRODUCED WITHOUT THE PERMISSION FROM AVW CO.

|   |            |                                    |               |
|---|------------|------------------------------------|---------------|
| DRAWN BY  | Tittu      | CUSTOMER: AVW Equipment Co.        |               |
| CHECKED BY  |            | PROJECT: MC2-Full Mitter Hydraulic |               |
| QTY   |            | DESCRIPTION: Mini Mitter Electric  |               |
| RELEASE DATE  | 10/13/2021 | PART NUMBER: MM5-EL-0914           | REV#          |
| DIMENSION ARE IN INCHES & PROVIDED PRIOR TO SURFACE TREATMENTS, UNLESS NOTED. |            | SIZE<br>A                          | EST WEIGHT:   |
|   |            |                                    | SHEET 1 of 22 |

# MM5-EL-0914 - Mini Mitter Electric



| Parts List |     |                                      |
|------------|-----|--------------------------------------|
| ITEM       | QTY | DESCRIPTION                          |
| 1          | 4   | Stand. 120" Leg Assembly             |
| 2          | 1   | Mini Mitter Top Frame                |
| 3          | 1   | Mini Mitter Basket Assembly          |
| 4          | 4   | Basket Support Rod Assembly - 27" LG |
| 5          | 1   | Basket Drive Assembly Electric       |
| 6          | 16  | Square Bolt 1/2-13x1.5               |

**NOTE:** Curtain cloth sold separately



AVW EQUIPMENT CO., INC.  
105 S. 9TH AVENUE  
MAYWOOD, IL 60153  
Tel: 708-343-7738 Fax: 708-343-9065  
WWW.AVWEQUIPMENT.COM

## - COMPANY PROPRIETARY NOTE -

THIS DRAWING AND ITS DESIGNS ARE PROPERTY OF AVW EQUIPMENT CO. & IT IS NOT TO BE USED OR REPRODUCED WITHOUT THE PERMISSION FROM AVW CO.

DRAWN BY

Tittu

CUSTOMER: AVW Equipment Co.

CHECKED BY

PROJECT: MC2-Full Mitter Hydraulic

QTY

DESCRIPTION: Mini Mitter Electric

RELEASE DATE

10/13/2021

PART NUMBER: MM5-EL-0914

REV#

DIMENSION ARE IN INCHES & PROVIDED PRIOR TO SURFACE TREATMENTS, UNLESS NOTED.

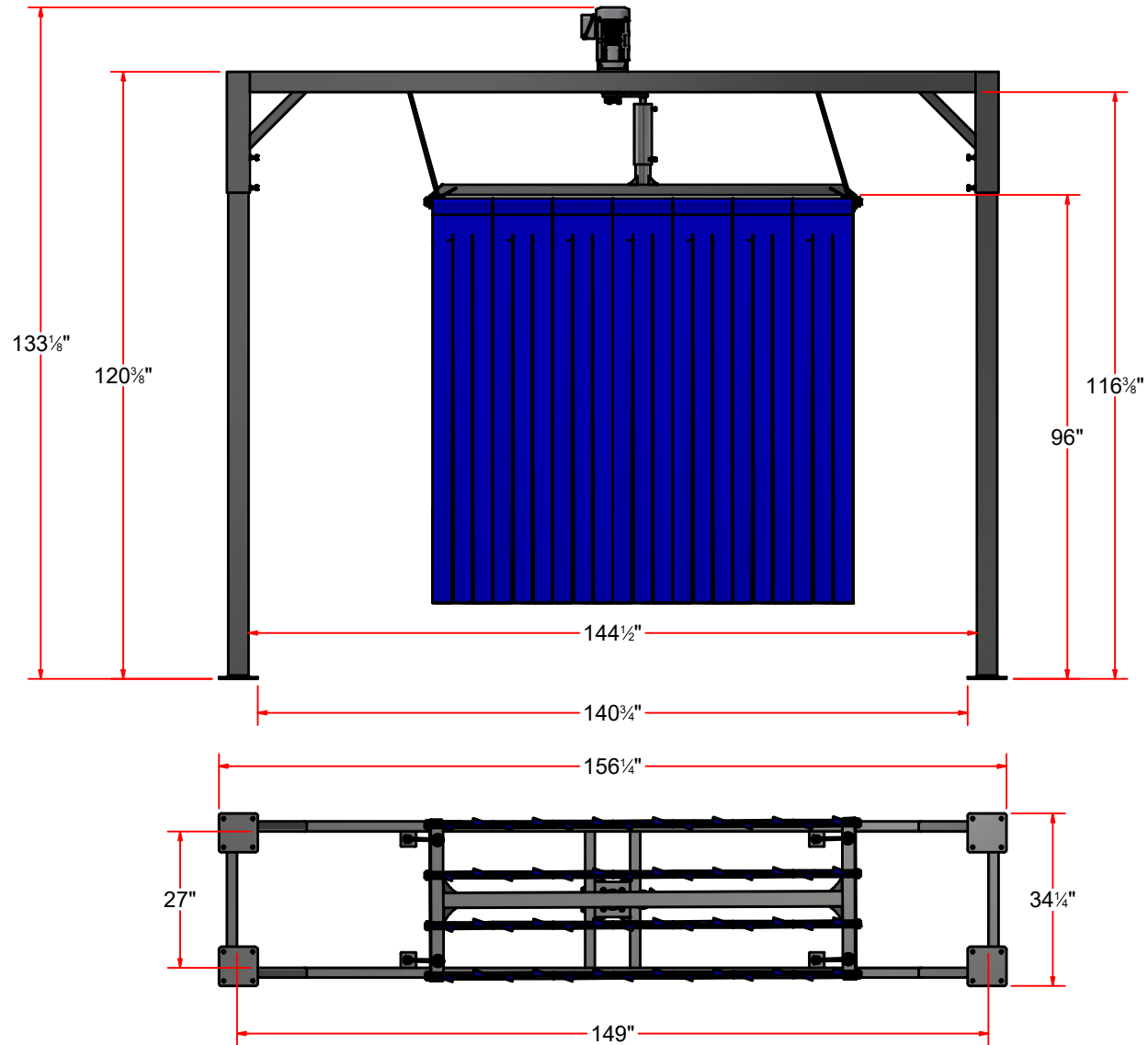
SIZE  
A

EST WEIGHT:

SHEET 2 of 22

PATH: L:\Designs\Product Lines\Mitters\MM5-EL-0914 Mini Mitter Electric\MM5-EL-0914 Mini Mitter Electric.iam

# MM5-EL-0914 - Mini Mitter Electric



AVW EQUIPMENT CO., INC.  
105 S. 9TH AVENUE  
MAYWOOD, IL 60153  
Tel: 708-343-7738 Fax: 708-343-9065  
WWW.AVWEQUIPMENT.COM

## - COMPANY PROPRIETARY NOTE -

THIS DRAWING AND ITS DESIGNS ARE PROPERTY OF AVW EQUIPMENT CO. & IT IS NOT TO BE USED OR REPRODUCED WITHOUT THE PERMISSION FROM AVW CO.

DRAWN BY

Tittu

CUSTOMER: AVW Equipment Co.

CHECKED BY

PROJECT: MC2-Full Mitter Hydraulic

QTY

DESCRIPTION: Mini Mitter Electric

RELEASE DATE

10/13/2021

PART NUMBER: MM5-EL-0914

REV#

DIMENSION ARE IN INCHES & PROVIDED PRIOR TO SURFACE TREATMENTS, UNLESS NOTED.

SIZE  
A

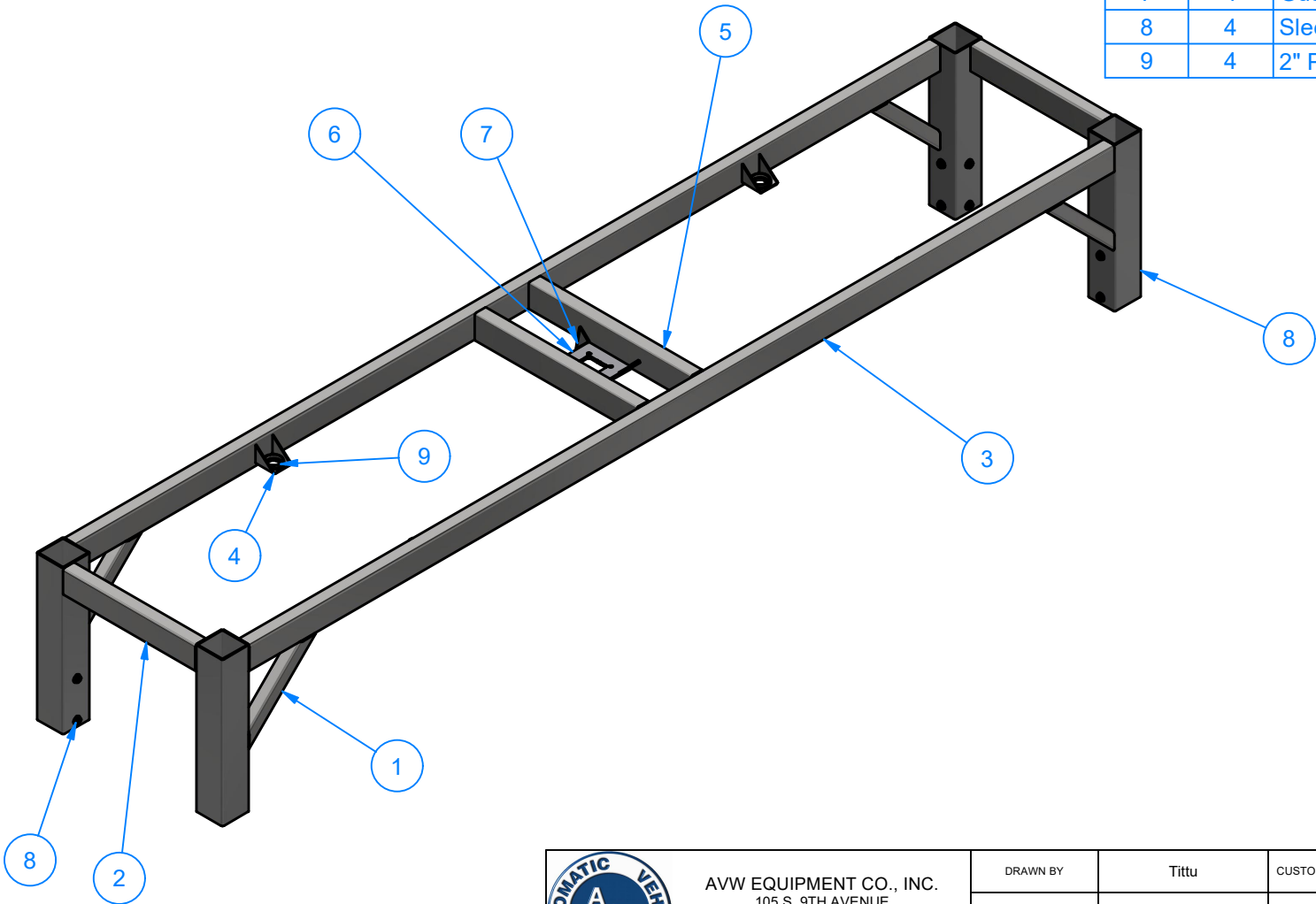
EST WEIGHT:

SHEET 3 of 22

PATH: L:\Designs\Product Lines\Mitters\MM5-EL-0914 Mini Mitter Electric\MM5-EL-0914 Mini Mitter Electric.iam

# MM5B-7-14 - Mini Mitter Top Frame

| Parts List |     |                                     |
|------------|-----|-------------------------------------|
| ITEM       | QTY | DESCRIPTION                         |
| 1          | 4   | Sq. Tube #11Ga. 2" x 2" x 16"LG     |
| 2          | 2   | Rect. Tube 7Ga. 2" x 4" x 22" LG.   |
| 3          | 2   | Rect. Tube #7Ga. 2" x 4" x 144" LG. |
| 4          | 4   | Sheet Metal #9Ga x 3" x 8 "         |
| 5          | 2   | Rect. Tube #7Ga. 2" x 4" x 27" LG.  |
| 6          | 1   | SS Plate #3/8"x 7"x 7"              |
| 7          | 4   | Gusset #1/4" x 2" x 2"              |
| 8          | 4   | Sleeve 4 1/2" SQ. x 24" LG.         |
| 9          | 4   | 2" Pipe Sch 10 x 1/2" Lg            |

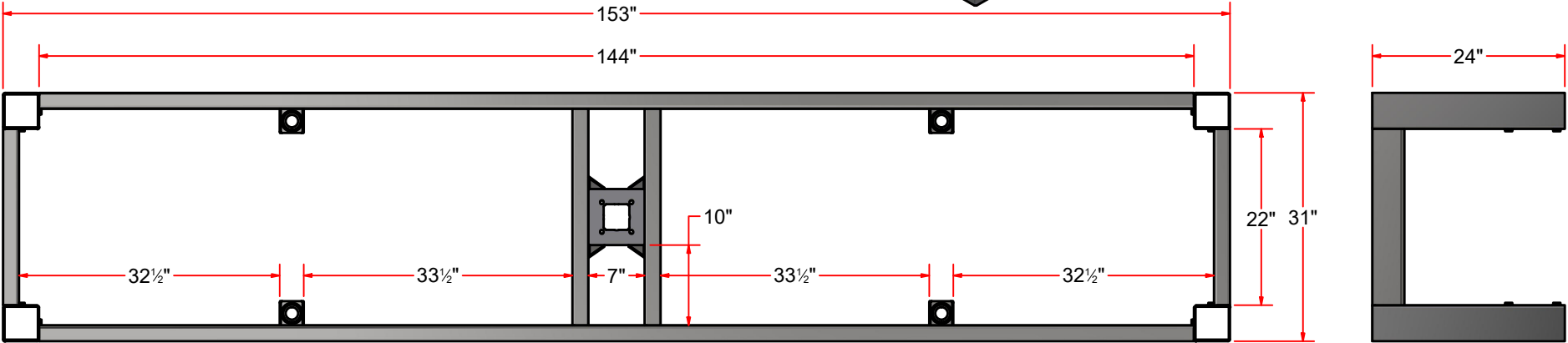
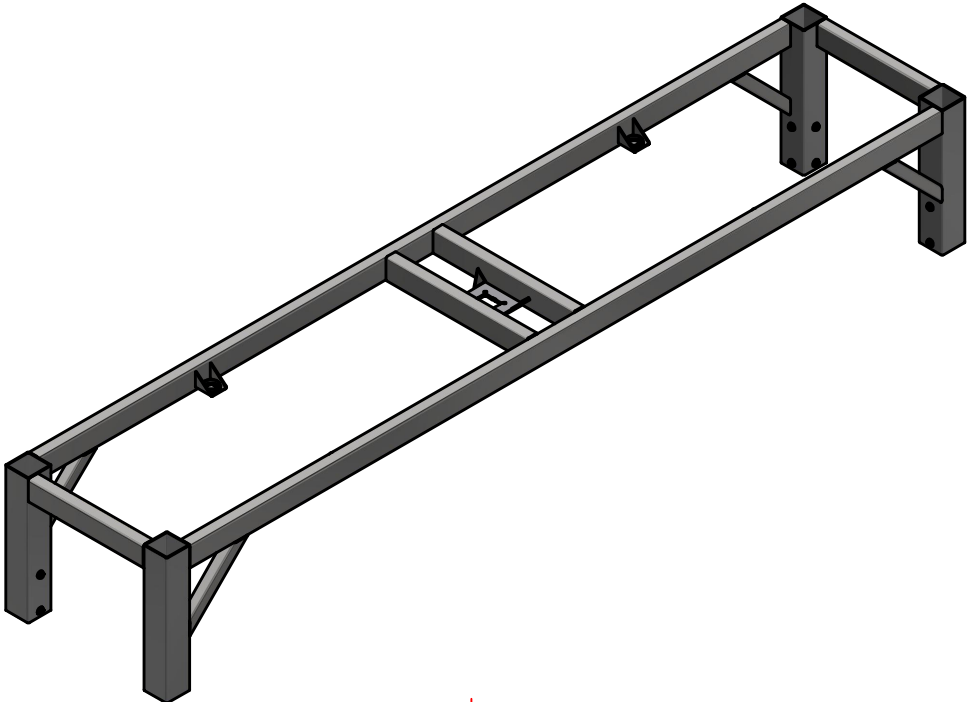


AVW EQUIPMENT CO., INC.  
105 S. 9TH AVENUE  
MAYWOOD, IL 60153  
Tel: 708-343-7738 Fax: 708-343-9065  
WWW.AVWEQUIPMENT.COM

- COMPANY PROPRIETARY NOTE -  
THIS DRAWING AND ITS DESIGNS ARE PROPERTY OF AVW EQUIPMENT CO. &  
IT IS NOT TO BE USED OR REPRODUCED WITHOUT THE PERMISSION FROM AVW CO.

|   |            |                                    |               |
|---|------------|------------------------------------|---------------|
| DRAWN BY  | Tittu      | CUSTOMER: AVW Equipment Co.        |               |
| CHECKED BY  |            | PROJECT: MC2-Full Mitter Hydraulic |               |
| QTY   |            | DESCRIPTION: Mini Mitter Top Frame |               |
| RELEASE DATE  | 10/13/2021 | PART NUMBER: MM5B-7-14             | REV#          |
| DIMENSION ARE IN INCHES & PROVIDED PRIOR TO SURFACE TREATMENTS, UNLESS NOTED. |            | SIZE A                             | EST WEIGHT:   |
|   |            |                                    | SHEET 4 of 22 |

MM5B-7-14 - Mini Mitter Top Frame

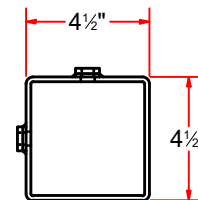
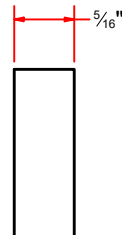
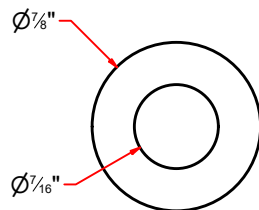
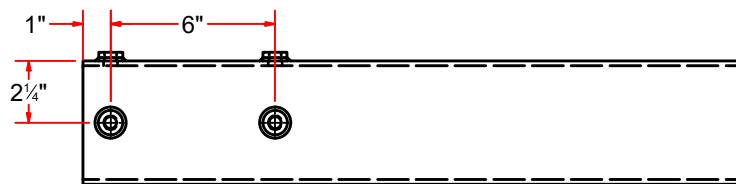
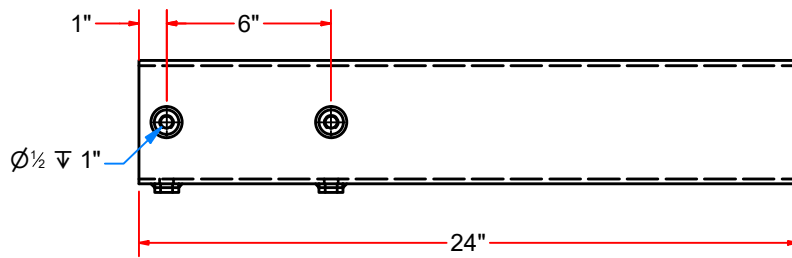


AVW EQUIPMENT CO., INC.  
105 S. 9TH AVENUE  
MAYWOOD, IL 60153  
Tel: 708-343-7738 Fax: 708-343-9065  
WWW.AVWEQUIPMENT.COM

- COMPANY PROPRIETARY NOTE -  
THIS DRAWING AND ITS DESIGNS ARE PROPERTY OF AVW EQUIPMENT CO. &  
IT IS NOT TO BE USED OR REPRODUCED WITHOUT THE PERMISSION FROM AVW CO.

|   |            |                                    |               |
|---|------------|------------------------------------|---------------|
| DRAWN BY  | Tittu      | CUSTOMER: AVW Equipment Co.        |               |
| CHECKED BY  |            | PROJECT: MC2-Full Mitter Hydraulic |               |
| QTY   |            | DESCRIPTION: Mini Mitter Top Frame |               |
| RELEASE DATE  | 10/13/2021 | PART NUMBER: MM5B-7-14             | REV#          |
| DIMENSION ARE IN INCHES & PROVIDED PRIOR TO SURFACE TREATMENTS, UNLESS NOTED. |            | SIZE A                             | EST WEIGHT:   |
|   |            |                                    | SHEET 5 of 22 |

# WA1CC - Sleeve 4 1/2" SQ. x 24" LG.



| Parts List |     |                                   |
|------------|-----|-----------------------------------|
| ITEM       | QTY | DESCRIPTION                       |
| 1          | 4   | Sleeve Nut 1/2"                   |
| 2          | 1   | Sq.Tubing [7 Ga.] 4 1/2" x 24" LG |



## NOTES:

- 1) WELD NUTS AS SHOWN.
- 2) DRILL THRU SLEEVE USING NUTS AS GUIDE.
- 3) TAP 1/2"-13 THRU ALL HOLES




AVW EQUIPMENT CO., INC.  
105 S. 9TH AVENUE  
MAYWOOD, IL 60153  
Tel: 708-343-7738 Fax: 708-343-9065  
WWW.AVWEQUIPMENT.COM

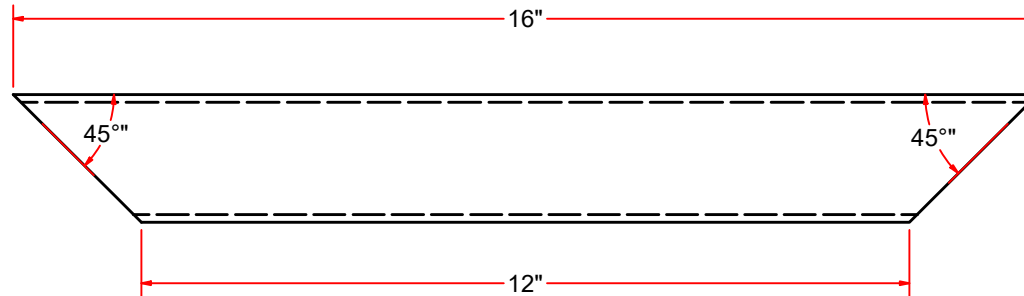
**- COMPANY PROPRIETARY NOTE -**  
THIS DRAWING AND ITS DESIGNS ARE PROPERTY OF AVW EQUIPMENT CO. &  
IT IS NOT TO BE USED OR REPRODUCED WITHOUT THE PERMISSION FROM AVW CO.

PATH:L:\Libraries\AVW Components\Sleeve Nut(D7\_8)-5\_16-01.jpt


|   |            |   |                              |
|---|------------|---|------------------------------|
| DRAWN BY  | Tittu      | CUSTOMER: AVW Equipment Co.                       |                              |
| CHECKED BY  |            | PROJECT: MC2-Full Mitter Hydraulic                |                              |
| QTY   |            | DESCRIPTION: Sleeve Nut #5/16" x 7/8"OD x 7/16"ID |                              |
| RELEASE DATE  | 10/13/2021 | PART NUMBER: (D7_8)-5_16-01                       | REV#                         |
| DIMENSION ARE IN INCHES & PROVIDED PRIOR TO SURFACE TREATMENTS, UNLESS NOTED. |            | SIZE<br><b>A</b>                                  | EST WEIGHT:<br>SHEET 6 of 22 |



|   |   |            |                                     |             |               |
|---|---|------------|-------------------------------------|-------------|---------------|
|  <p>AVW EQUIPMENT CO., INC.<br/>105 S. 9TH AVENUE<br/>MAYWOOD, IL 60153<br/>Tel: 708-343-7738 Fax: 708-343-9065<br/>WWW.AVWEQUIPMENT.COM</p> | DRAWN BY  | Tittu      | CUSTOMER: AVW Equipment Co.         |             |               |
|   | CHECKED BY  |            | PROJECT: MC2-Full Mitter Hydraulic  |             |               |
|   | QTY   |            | DESCRIPTION: SS Plate #3/8"x 7"x 7" |             |               |
| <p><b>- COMPANY PROPRIETARY NOTE -</b><br/>THIS DRAWING AND ITS DESIGNS ARE PROPERTY OF AVW EQUIPMENT CO. &amp; IT IS NOT TO BE USED OR REPRODUCED WITHOUT THE PERMISSION FROM AVW CO.</p>                                      | RELEASE DATE  | 10/13/2021 | PART NUMBER: MC2BAH-EL              |             | REV#          |
|   | DIMENSION ARE IN INCHES & PROVIDED PRIOR TO SURFACE TREATMENTS, UNLESS NOTED. |            | SIZE<br><b>A</b>                    | EST WEIGHT: | SHEET 7 of 22 |
| PATH: L:\Libraries\AVW Components\Plates\Motor Mount Plates\Electric Motor Plates\Electric Motor mount plate Mitter.ipt   |   |            |                                     |             |               |

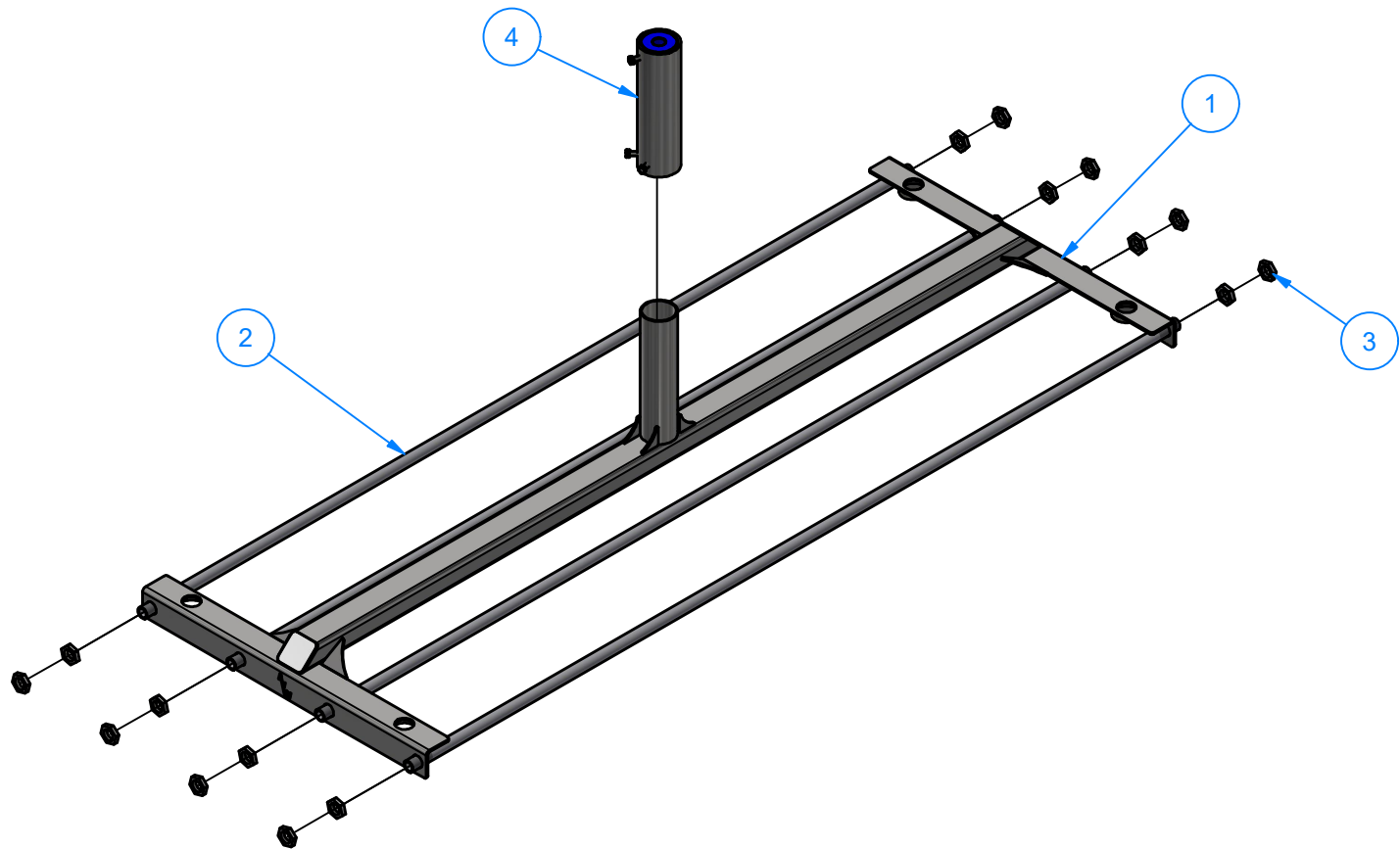


Sq. Tube #11Ga. 2" x 2" x 16"LG

|   |   |            |  |             |               |
|---|---|------------|--|-------------|---------------|
|  <p>AVW EQUIPMENT CO., INC.<br/>105 S. 9TH AVENUE<br/>MAYWOOD, IL 60153<br/>Tel: 708-343-7738 Fax: 708-343-9065<br/>WWW.AVWEQUIPMENT.COM</p> | DRAWN BY  | Tittu      | CUSTOMER: AVW Equipment Co.                  |             |               |
|   | CHECKED BY  |            | PROJECT: MC2-Full Mitter Hydraulic           |             |               |
|   | QTY   |            | DESCRIPTION: Sq. Tube #11Ga. 2" x 2" x 16"LG |             |               |
| <p><b>- COMPANY PROPRIETARY NOTE -</b></p> <p>THIS DRAWING AND ITS DESIGNS ARE PROPERTY OF AVW EQUIPMENT CO. &amp; IT IS NOT TO BE USED OR REPRODUCED WITHOUT THE PERMISSION FROM AVW CO.</p>                                   | RELEASE DATE  | 10/13/2021 | PART NUMBER: MC2BAB                          |             | REV#          |
|   | DIMENSION ARE IN INCHES & PROVIDED PRIOR TO SURFACE TREATMENTS, UNLESS NOTED. |            | SIZE<br><b>A</b>                             | EST WEIGHT: | SHEET 8 of 22 |
| PATH:L:\Libraries\Productivity\Frames\Mitter Top Frames\Full Mitter Top Frames\Full Mitter Top Frame Hydraulic\Parts\MMTF006.ipt  |   |            |  |             |               |

# MM5D-7 - Mini Mitter Basket Assembly

| Parts List |     |                               |
|------------|-----|-------------------------------|
| ITEM       | QTY | DESCRIPTION                   |
| 1          | 1   | Mini Mitter Basket Frame      |
| 2          | 4   | 86-1/2"L Mitter Curtain Rod   |
| 3          | 16  | Plastic Hex Nut 3/4-10        |
| 4          | 1   | Sleeve Assembly-Mitter Basket |



**NOTE:** Curtain cloth sold separately

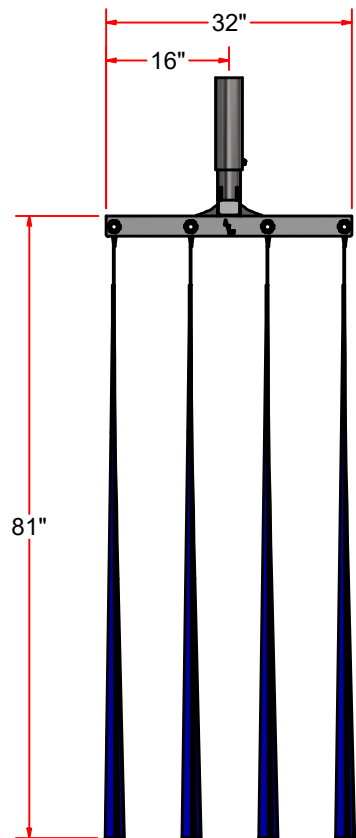
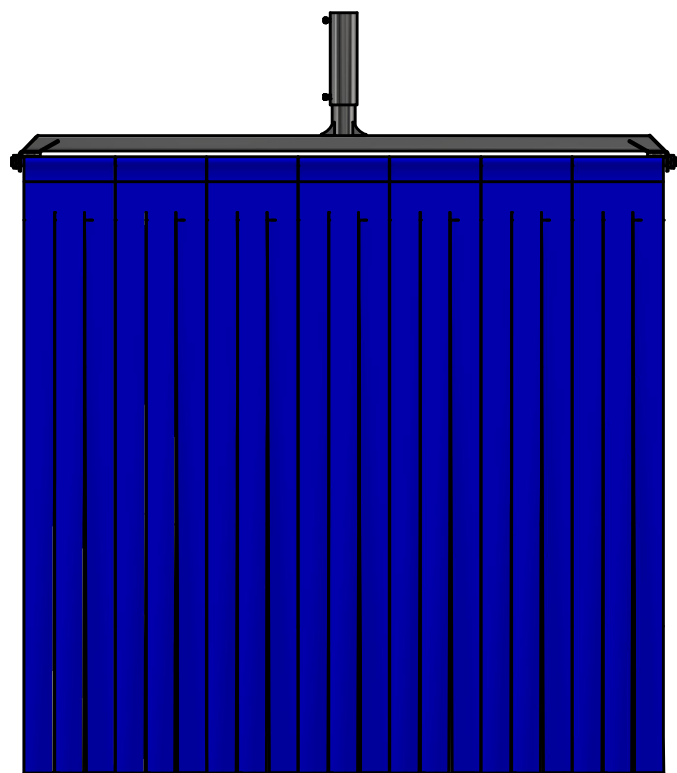
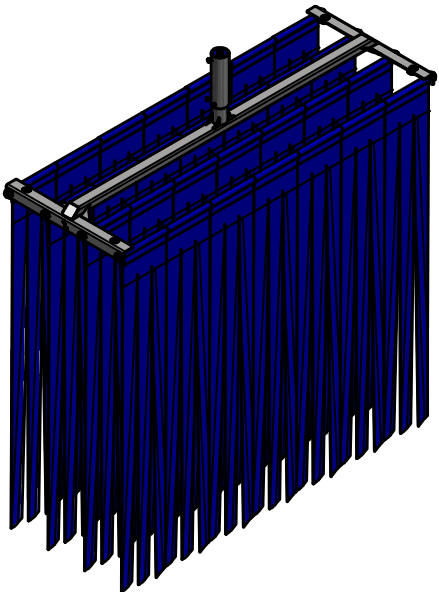
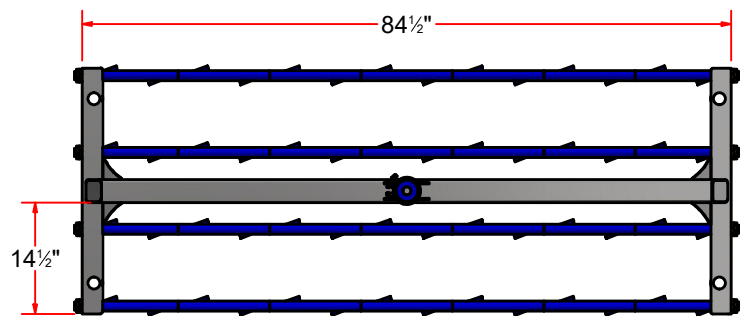


AVW EQUIPMENT CO., INC.  
105 S. 9TH AVENUE  
MAYWOOD, IL 60153  
Tel: 708-343-7738 Fax: 708-343-9065  
WWW.AVWEQUIPMENT.COM

- COMPANY PROPRIETARY NOTE -  
THIS DRAWING AND ITS DESIGNS ARE PROPERTY OF AVW EQUIPMENT CO. &  
IT IS NOT TO BE USED OR REPRODUCED WITHOUT THE PERMISSION FROM AVW CO.

|   |            |  |               |
|---|------------|--|---------------|
| DRAWN BY  | Tittu      | CUSTOMER: AVW Equipment Co.              |               |
| CHECKED BY  |            | PROJECT: MC2-Full Mitter Hydraulic       |               |
| QTY   |            | DESCRIPTION: Mini Mitter Basket Assembly |               |
| RELEASE DATE  | 10/13/2021 | PART NUMBER: MM5D-7                      | REV#          |
| DIMENSION ARE IN INCHES & PROVIDED PRIOR TO SURFACE TREATMENTS, UNLESS NOTED. |            | SIZE A                                   | EST WEIGHT:   |
|   |            |  | SHEET 9 of 22 |

MM5D-7 - Mini Mitter Basket Assembly



**NOTE:** Curtain cloth sold separately



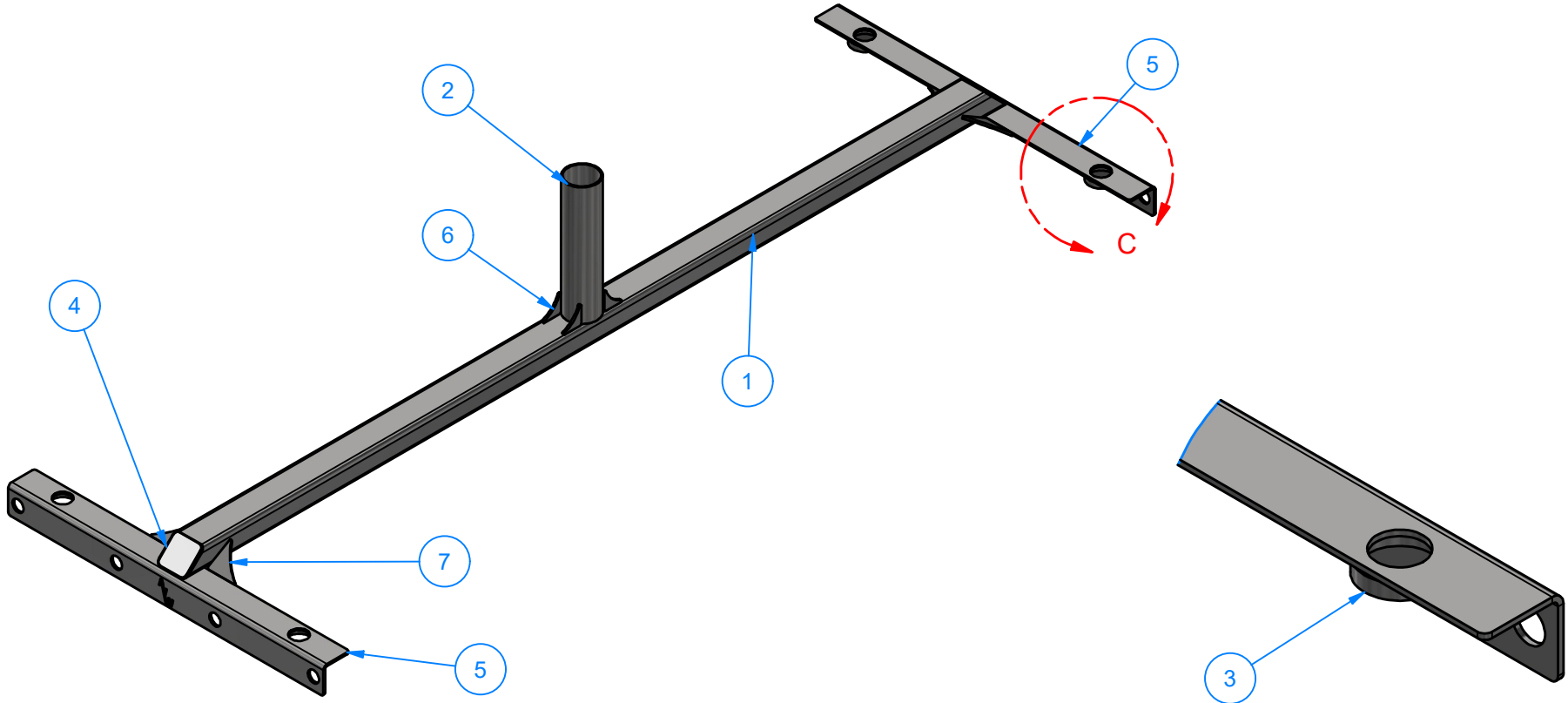
AVW EQUIPMENT CO., INC.  
105 S. 9TH AVENUE  
MAYWOOD, IL 60153  
Tel: 708-343-7738 Fax: 708-343-9065  
WWW.AVWEQUIPMENT.COM

- COMPANY PROPRIETARY NOTE -  
THIS DRAWING AND ITS DESIGNS ARE PROPERTY OF AVW EQUIPMENT CO. &  
IT IS NOT TO BE USED OR REPRODUCED WITHOUT THE PERMISSION FROM AVW CO.

|   |            |  |                |
|---|------------|--|----------------|
| DRAWN BY  | Tittu      | CUSTOMER: AVW Equipment Co.              |                |
| CHECKED BY  |            | PROJECT: MC2-Full Mitter Hydraulic       |                |
| QTY   |            | DESCRIPTION: Mini Mitter Basket Assembly |                |
| RELEASE DATE  | 10/13/2021 | PART NUMBER: MM5D-7                      | REV#           |
| DIMENSION ARE IN INCHES & PROVIDED PRIOR TO SURFACE TREATMENTS, UNLESS NOTED. |            | SIZE A                                   | EST WEIGHT:    |
|   |            |  | SHEET 10 of 22 |

MM5DA-7 - Mini Mitter Basket Frame

| Parts List |     |   |
|------------|-----|---|
| ITEM       | QTY | DESCRIPTION                             |
| 1          | 1   | Rect.Tube 7GAx2"x3"x83-1/2"L            |
| 2          | 1   | Round Tubing 3" OD X .12" Wall X 12" LG |
| 3          | 4   | Ring #1/8" x 2 3/8" OD. x 1/2" LG.      |
| 4          | 2   | Plate #12Ga x 2-3/4 x- 2-3/4            |
| 5          | 2   | Sheet Metal #3/16" x 32" x 5"           |
| 6          | 4   | Gusset #3/16" x 1 3/4" x 1 3/4"         |
| 7          | 4   | Gusset #3/16" x 2-3_4x2-3_4             |



DETAIL C

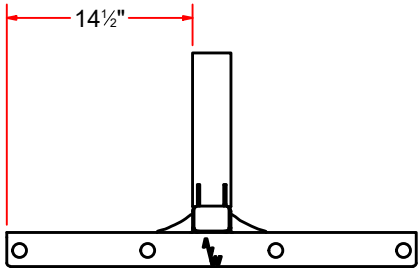
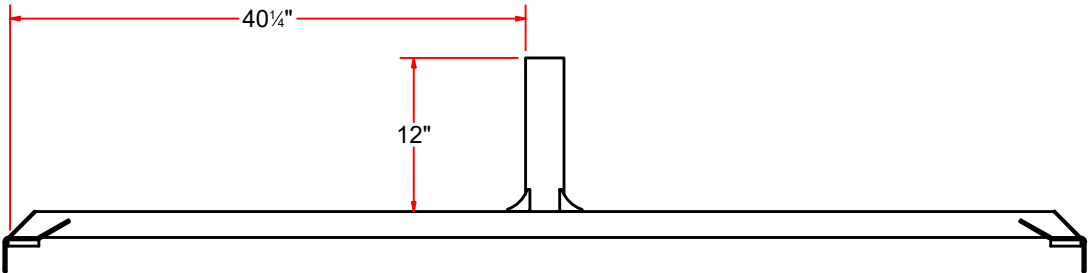
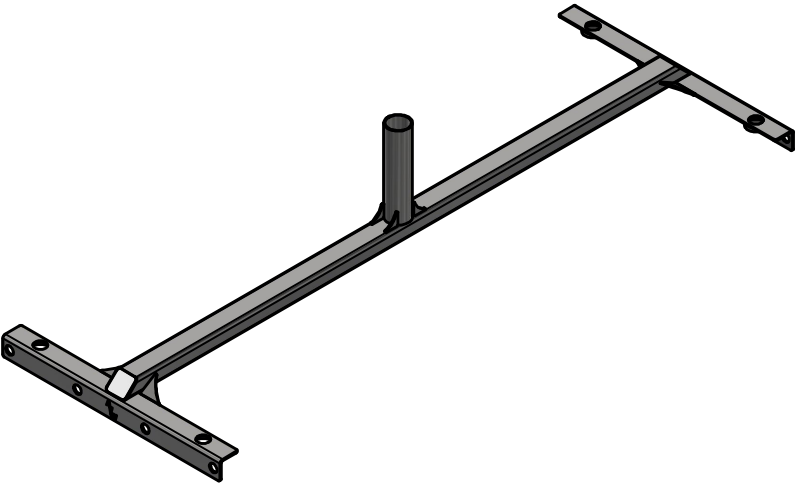
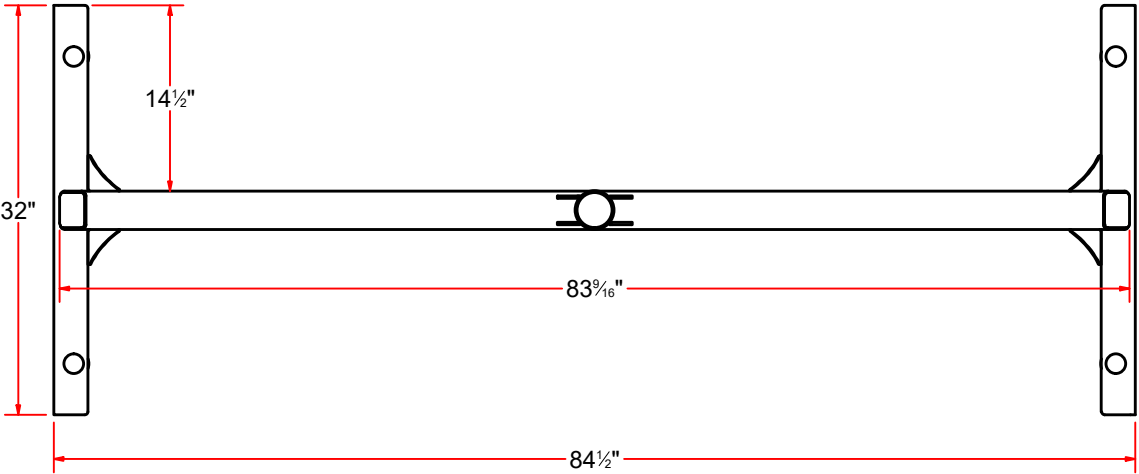


AVW EQUIPMENT CO., INC.  
105 S. 9TH AVENUE  
MAYWOOD, IL 60153  
Tel: 708-343-7738 Fax: 708-343-9065  
WWW.AVWEQUIPMENT.COM

- COMPANY PROPRIETARY NOTE -  
THIS DRAWING AND ITS DESIGNS ARE PROPERTY OF AVW EQUIPMENT CO. &  
IT IS NOT TO BE USED OR REPRODUCED WITHOUT THE PERMISSION FROM AVW CO.

|   |            |                                       |                |
|---|------------|---------------------------------------|----------------|
| DRAWN BY  | Tittu      | CUSTOMER: AVW Equipment Co.           |                |
| CHECKED BY  |            | PROJECT: MC2-Full Mitter Hydraulic    |                |
| QTY   |            | DESCRIPTION: Mini Mitter Basket Frame |                |
| RELEASE DATE  | 10/13/2021 | PART NUMBER: MM5DA-7                  | REV#           |
| DIMENSION ARE IN INCHES & PROVIDED PRIOR TO SURFACE TREATMENTS, UNLESS NOTED. |            | SIZE A                                | EST WEIGHT:    |
|   |            |                                       | SHEET 11 of 22 |

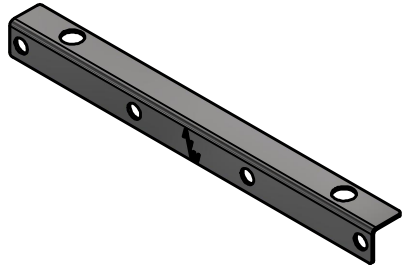
# MM5DA-7 - Mini Mitter Basket Frame



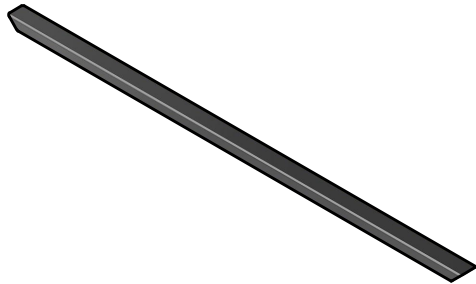
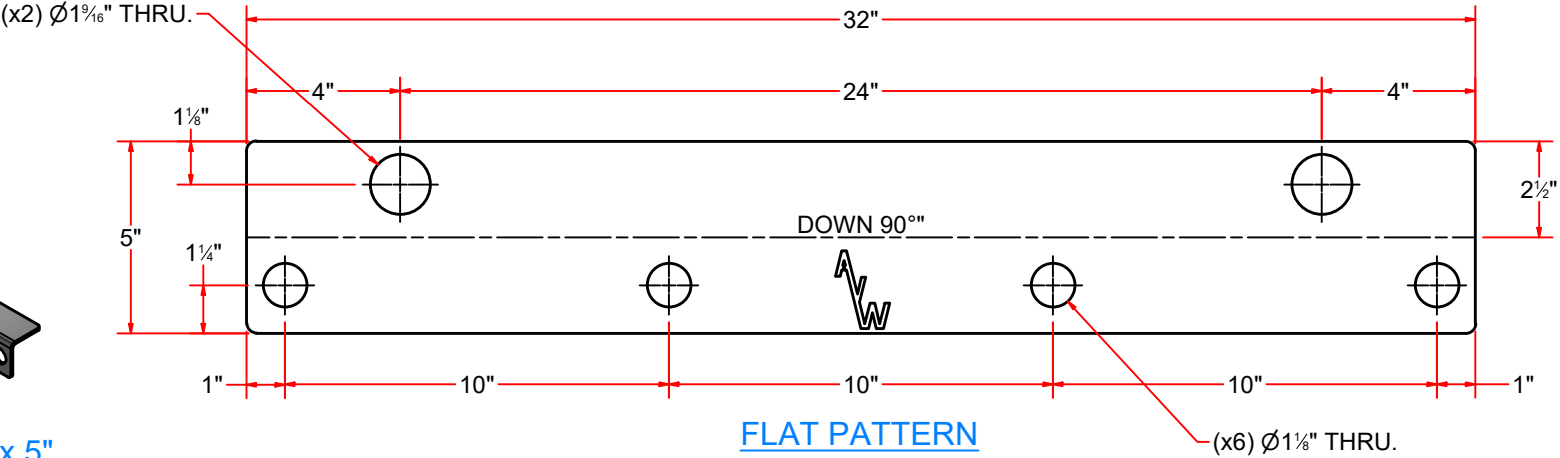
AVW EQUIPMENT CO., INC.  
105 S. 9TH AVENUE  
MAYWOOD, IL 60153  
Tel: 708-343-7738 Fax: 708-343-9065  
WWW.AVWEQUIPMENT.COM

**- COMPANY PROPRIETARY NOTE -**  
THIS DRAWING AND ITS DESIGNS ARE PROPERTY OF AVW EQUIPMENT CO. &  
IT IS NOT TO BE USED OR REPRODUCED WITHOUT THE PERMISSION FROM AVW CO.

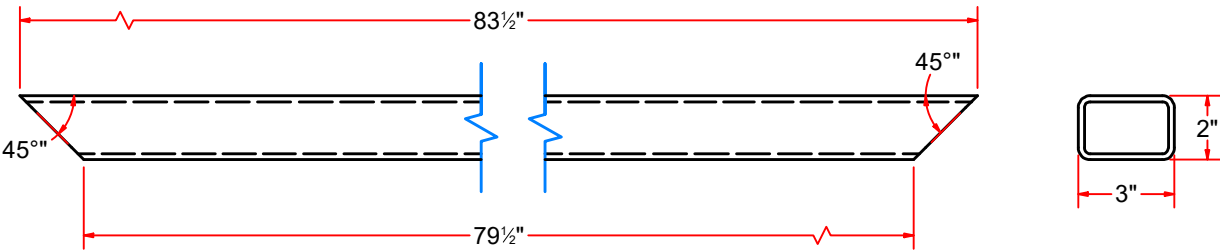
|   |            |                                       |                |
|---|------------|---------------------------------------|----------------|
| DRAWN BY  | Tittu      | CUSTOMER: AVW Equipment Co.           |                |
| CHECKED BY  |            | PROJECT: MC2-Full Mitter Hydraulic    |                |
| QTY   |            | DESCRIPTION: Mini Mitter Basket Frame |                |
| RELEASE DATE  | 10/13/2021 | PART NUMBER: MM5DA-7                  | REV#           |
| DIMENSION ARE IN INCHES & PROVIDED PRIOR TO SURFACE TREATMENTS, UNLESS NOTED. |            | SIZE A                                | EST WEIGHT:    |
|   |            |                                       | SHEET 12 of 22 |



Sheet Metal #3/16" x 32" x 5"



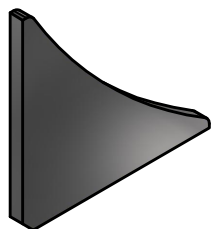
Rect. Tube 7GAx2"x3"x83-1/2"L



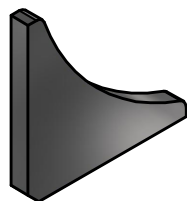
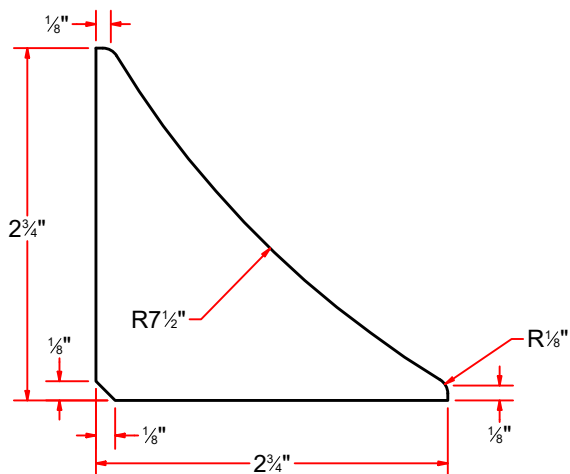
AVW EQUIPMENT CO., INC.  
105 S. 9TH AVENUE  
MAYWOOD, IL 60153  
Tel: 708-343-7738 Fax: 708-343-9065  
WWW.AVWEQUIPMENT.COM

**- COMPANY PROPRIETARY NOTE -**  
THIS DRAWING AND ITS DESIGNS ARE PROPERTY OF AVW EQUIPMENT CO. &  
IT IS NOT TO BE USED OR REPRODUCED WITHOUT THE PERMISSION FROM AVW CO.

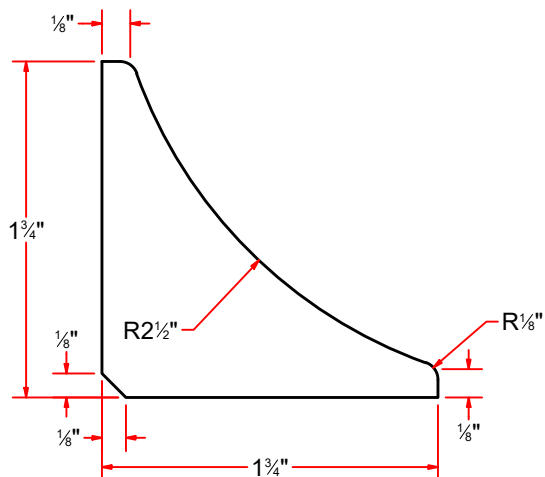
|   |            |  |                |
|---|------------|--|----------------|
| DRAWN BY  | Tittu      | CUSTOMER: AVW Equipment Co.                |                |
| CHECKED BY  |            | PROJECT: MC2-Full Mitter Hydraulic         |                |
| QTY   |            | DESCRIPTION: Rect. Tube 7GAx2"x3"x83-1/2"L |                |
| RELEASE DATE  | 10/13/2021 | PART NUMBER: MC2DAB                        | REV#           |
| DIMENSION ARE IN INCHES & PROVIDED PRIOR TO SURFACE TREATMENTS, UNLESS NOTED. |            | SIZE A                                     | EST WEIGHT:    |
|   |            |  | SHEET 13 of 22 |



Gusset #3/16" x 2-3 4x2-3 4



Gusset #3/16" x 1 3/4" x 1 3/4"



AVW EQUIPMENT CO., INC.  
105 S. 9TH AVENUE  
MAYWOOD, IL 60153  
Tel: 708-343-7738 Fax: 708-343-9065  
WWW.AVWEQUIPMENT.COM

**- COMPANY PROPRIETARY NOTE -**

THIS DRAWING AND ITS DESIGNS ARE PROPERTY OF AVW EQUIPMENT CO. & IT IS NOT TO BE USED OR REPRODUCED WITHOUT THE PERMISSION FROM AVW CO.

DRAWN BY

Tittu

CUSTOMER: AVW Equipment Co.

CHECKED BY

PROJECT: MC2-Full Mitter Hydraulic

QTY

DESCRIPTION: Gusset #3/16" x 2-3 4x2-3 4

RELEASE DATE

10/13/2021

PART NUMBER: GUSSS187X0275X0275

REV#

DIMENSION ARE IN INCHES & PROVIDED PRIOR TO SURFACE TREATMENTS, UNLESS NOTED.

SIZE  
A

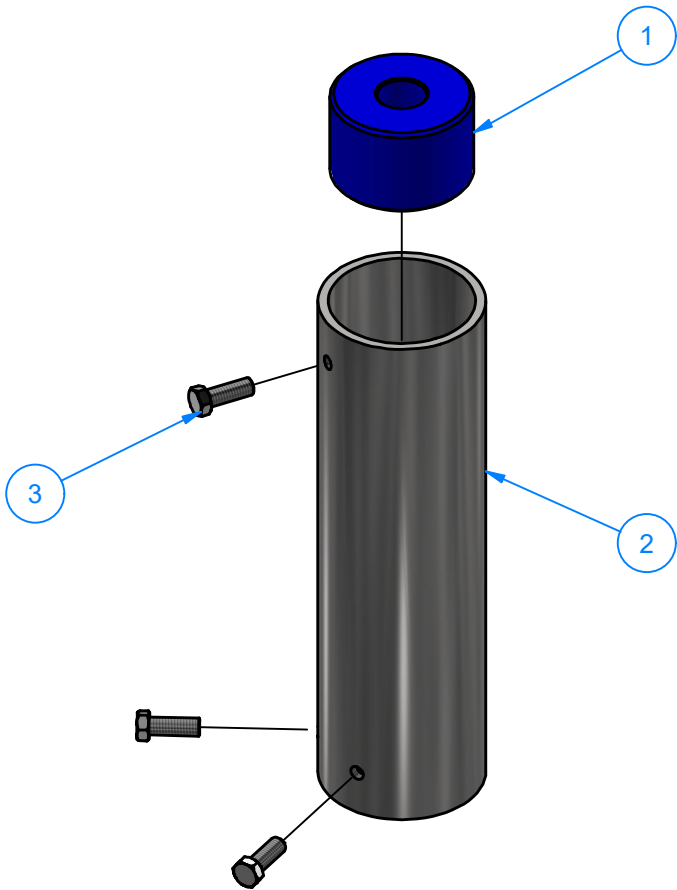
EST WEIGHT:

SHEET 14 of 22

PATH:L:\Libraries\AVW Components\Plates\Gussetts\Wrap Arm Rubber Stopper Gusset (2-3\_4 x 2-3\_4).ipt

MC1DB - Sleeve Assembly-Mitter Basket

| Parts List |     |                                |
|------------|-----|--------------------------------|
| ITEM       | QTY | DESCRIPTION                    |
| 1          | 1   | UHMW Bushing 3" O.D. X 1" I.D. |
| 2          | 1   | 3" Pipe #Sch40 x 12" LG.       |
| 3          | 3   | 3/8" - 16 x 1" UNC Hex Screw   |



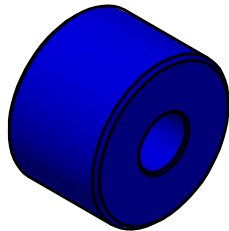
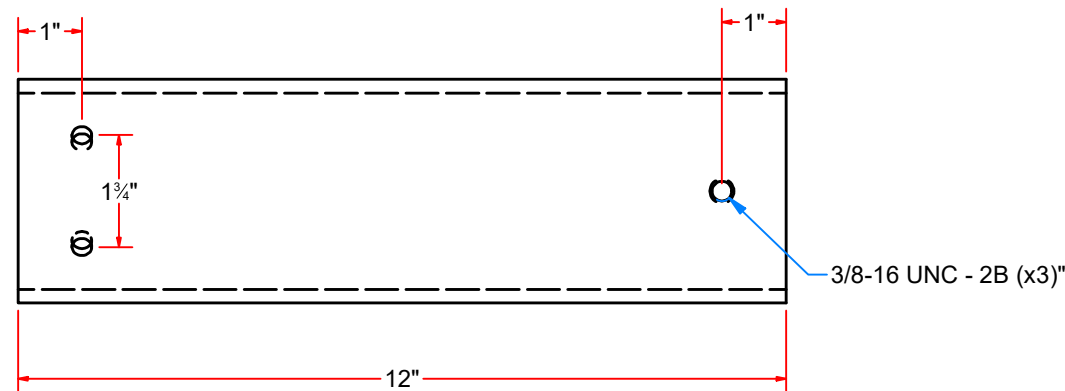
AVW EQUIPMENT CO., INC.  
105 S. 9TH AVENUE  
MAYWOOD, IL 60153  
Tel: 708-343-7738 Fax: 708-343-9065  
WWW.AVWEQUIPMENT.COM

- COMPANY PROPRIETARY NOTE -  
THIS DRAWING AND ITS DESIGNS ARE PROPERTY OF AVW EQUIPMENT CO. &  
IT IS NOT TO BE USED OR REPRODUCED WITHOUT THE PERMISSION FROM AVW CO.

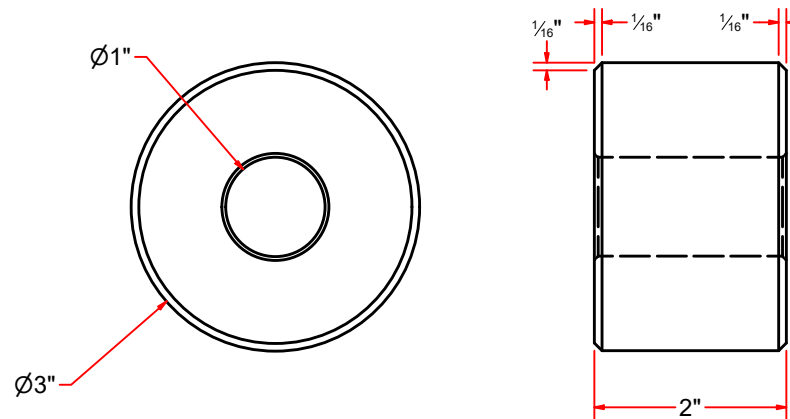
|   |            |  |             |
|---|------------|--|-------------|
| DRAWN BY  | Tittu      | CUSTOMER: AVW Equipment Co.                |             |
| CHECKED BY  |            | PROJECT: MC2-Full Mitter Hydraulic         |             |
| QTY   |            | DESCRIPTION: Sleeve Assembly-Mitter Basket |             |
| RELEASE DATE  | 10/13/2021 | PART NUMBER: MC1DB                         | REV#        |
| DIMENSION ARE IN INCHES & PROVIDED PRIOR TO SURFACE TREATMENTS, UNLESS NOTED. |            | SIZE A                                     | EST WEIGHT: |
| PATH:L:\Libraries\Productivity\Mitter Parts\Mitter Sleeves\MC1DB\MC1DB.iam    |            | SHEET 15 of 22                             |             |




3" Pipe #Sch40 x 12" LG.



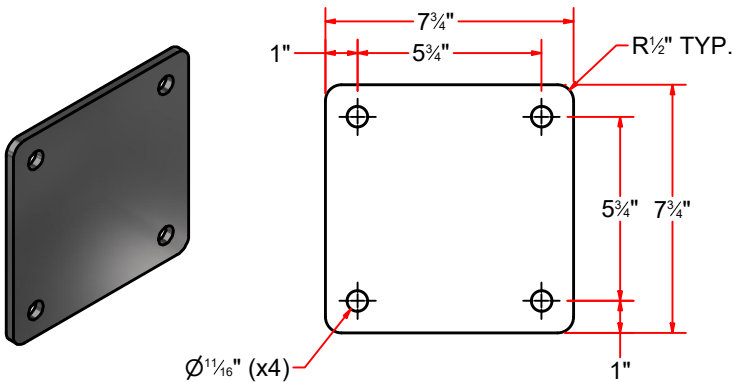
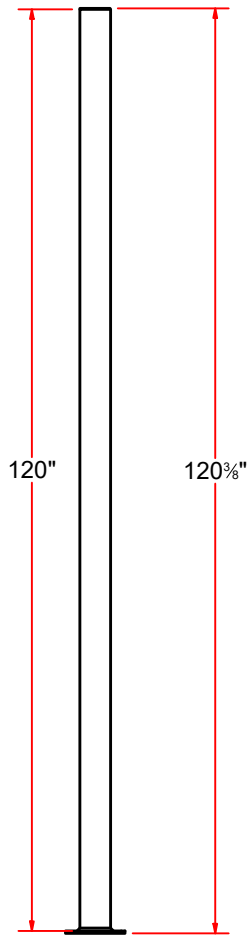
UHMW Bushing 3" O.D. X 1" I.D.



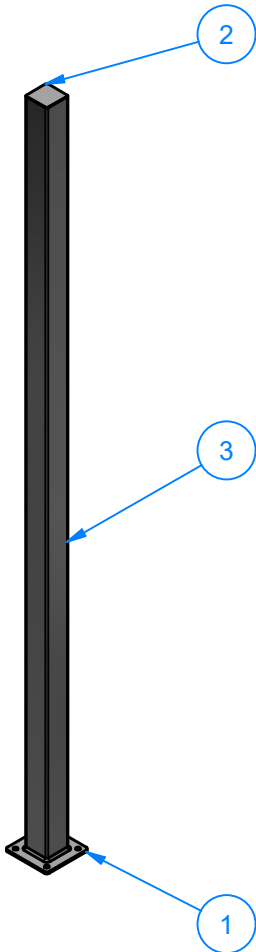
|   |   |            |                                       |             |                |
|---|---|------------|---------------------------------------|-------------|----------------|
|  <div>AVW EQUIPMENT CO., INC.<br/>105 S. 9TH AVENUE<br/>MAYWOOD, IL 60153<br/>Tel: 708-343-7738 Fax: 708-343-9065<br/>WWW.AVWEQUIPMENT.COM</div> | DRAWN BY  | Tittu      | CUSTOMER: AVW Equipment Co.           |             |                |
|   | CHECKED BY  |            | PROJECT: MC2-Full Mitter Hydraulic    |             |                |
|   | QTY   |            | DESCRIPTION: 3" Pipe #Sch40 x 12" LG. |             |                |
| <div>- COMPANY PROPRIETARY NOTE -<br/>THIS DRAWING AND ITS DESIGNS ARE PROPERTY OF AVW EQUIPMENT CO. &amp;<br/>IT IS NOT TO BE USED OR REPRODUCED WITHOUT THE PERMISSION FROM AVW CO.</div>   | RELEASE DATE  | 10/13/2021 | PART NUMBER: MC2DB1                   |             | REV#           |
|   | DIMENSION ARE IN INCHES & PROVIDED PRIOR TO SURFACE TREATMENTS, UNLESS NOTED.   |            | SIZE<br>A                             | EST WEIGHT: | SHEET 16 of 22 |
|   | PATH:L:\Libraries\Productivity\Mitter Baskets\Standard Mitter baskets\MC2D - Full Mitter Basket\Parts\MC2DA - Full Mitter Basket Frame\Parts\MC2DAD.ipt |            |                                       |             |                |

MC1A - Stand. 120" Leg Assembly

| Parts List |     |                                   |
|------------|-----|-----------------------------------|
| ITEM       | QTY | DESCRIPTION                       |
| 1          | 1   | SS Plate #5/16" x 7-3/4" x 7-3/4" |
| 2          | 1   | Sq. SS Plate 14Ga x 3 15/16       |
| 3          | 1   | Sq. Tube [7 Ga] 4"x 120"LG.       |



SS Plate #5/16" x 7-3/4" x 7-3/4"

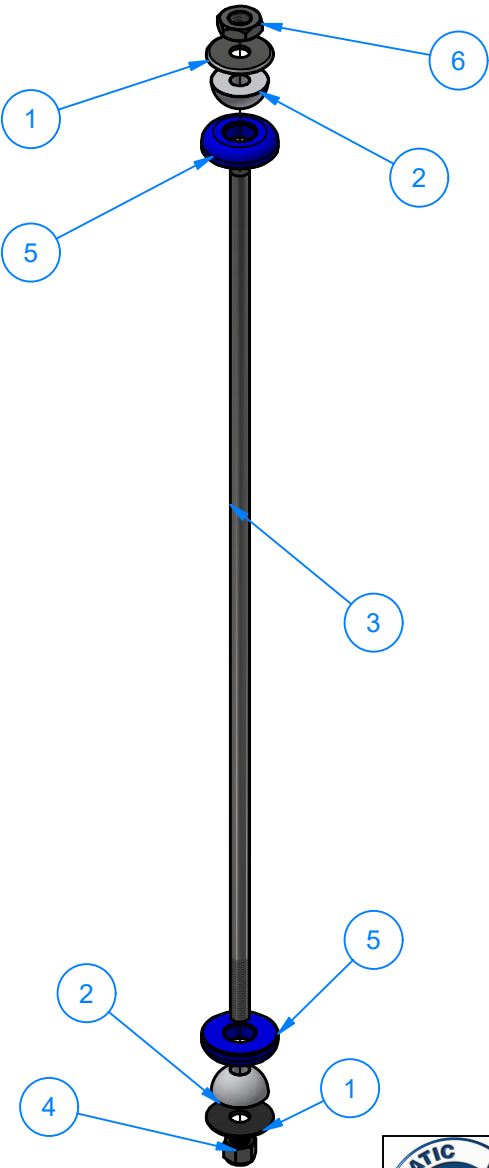


AVW EQUIPMENT CO., INC.  
105 S. 9TH AVENUE  
MAYWOOD, IL 60153  
Tel: 708-343-7738 Fax: 708-343-9065  
WWW.AVWEQUIPMENT.COM

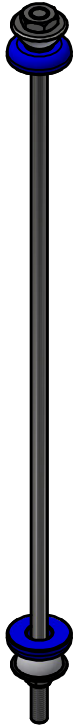
- COMPANY PROPRIETARY NOTE -  
THIS DRAWING AND ITS DESIGNS ARE PROPERTY OF AVW EQUIPMENT CO. &  
IT IS NOT TO BE USED OR REPRODUCED WITHOUT THE PERMISSION FROM AVW CO.

|   |            |                                       |                |
|---|------------|---------------------------------------|----------------|
| DRAWN BY  | Tittu      | CUSTOMER: AVW Equipment Co.           |                |
| CHECKED BY  |            | PROJECT: MC2-Full Mitter Hydraulic    |                |
| QTY   |            | DESCRIPTION: Stand. 120" Leg Assembly |                |
| RELEASE DATE  | 10/13/2021 | PART NUMBER: MC1A                     | REV#           |
| DIMENSION ARE IN INCHES & PROVIDED PRIOR TO SURFACE TREATMENTS, UNLESS NOTED. |            | SIZE A                                | EST WEIGHT:    |
|   |            |                                       | SHEET 17 of 22 |

MC1C - Basket Support Rod Assembly - 27" LG



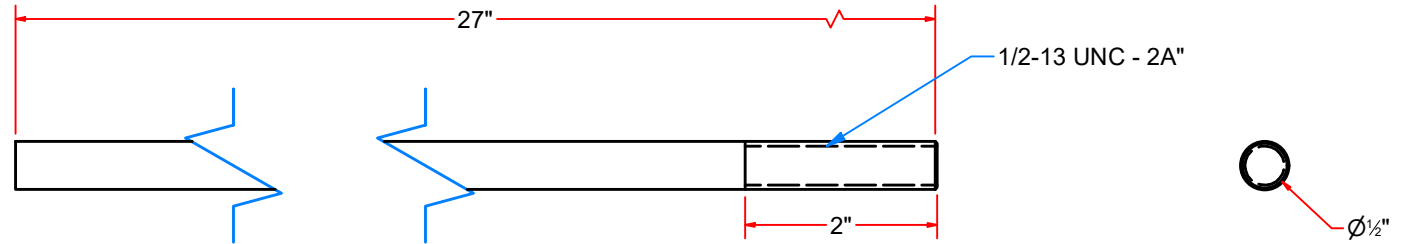
| Parts List |     |                                    |
|------------|-----|------------------------------------|
| ITEM       | QTY | DESCRIPTION                        |
| 1          | 2   | 1/2" Large Washer                  |
| 2          | 2   | Basket Support Half-Disc           |
| 3          | 1   | Basket Support Rod 1/2in x 27in LG |
| 4          | 1   | 1/2"-13 Nylon Lock Nut             |
| 5          | 2   | UHMW - Basket Support Disk         |
| 6          | 1   | 5/8"-11 18-8ss Heavy Hex Jam Nut   |



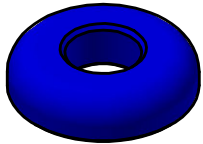
AVW EQUIPMENT CO., INC.  
105 S. 9TH AVENUE  
MAYWOOD, IL 60153  
Tel: 708-343-7738 Fax: 708-343-9065  
WWW.AVWEQUIPMENT.COM

- COMPANY PROPRIETARY NOTE -  
THIS DRAWING AND ITS DESIGNS ARE PROPERTY OF AVW EQUIPMENT CO. &  
IT IS NOT TO BE USED OR REPRODUCED WITHOUT THE PERMISSION FROM AVW CO.

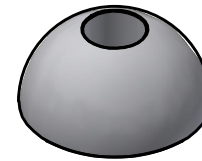
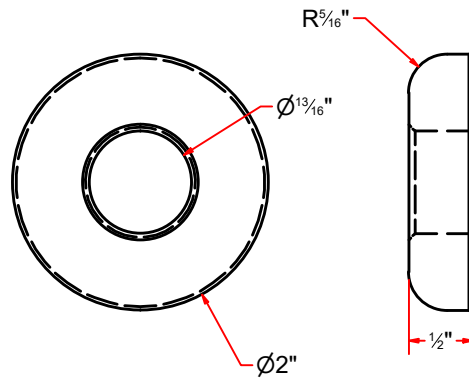
|   |            |   |                            |
|---|------------|---|----------------------------|
| DRAWN BY  | Tittu      | CUSTOMER: AVW Equipment Co.                       |                            |
| CHECKED BY  |            | PROJECT: MC2-Full Mitter Hydraulic                |                            |
| QTY   |            | DESCRIPTION: Basket Support Rod Assembly - 27" LG |                            |
| RELEASE DATE  | 10/13/2021 | PART NUMBER: MC1C                                 | REV#                       |
| DIMENSION ARE IN INCHES & PROVIDED PRIOR TO SURFACE TREATMENTS, UNLESS NOTED. |            | SIZE A  | EST WEIGHT: SHEET 18 of 22 |



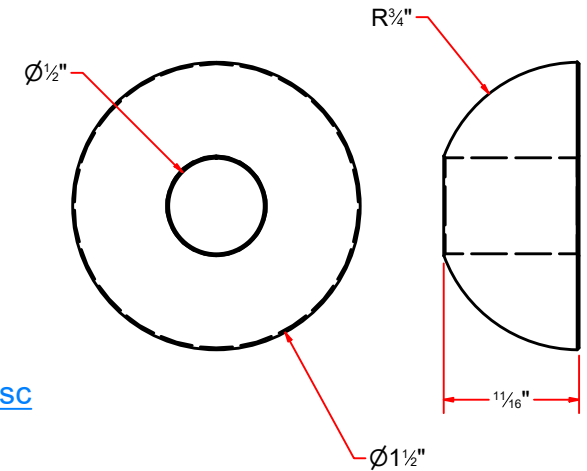
Basket Support Rod 1/2in x 27in LG



UHMW - Basket Support Disk



Basket Support Half-Disc



AVW EQUIPMENT CO., INC.  
105 S. 9TH AVENUE  
MAYWOOD, IL 60153  
Tel: 708-343-7738 Fax: 708-343-9065  
WWW.AVWEQUIPMENT.COM

**- COMPANY PROPRIETARY NOTE -**

THIS DRAWING AND ITS DESIGNS ARE PROPERTY OF AVW EQUIPMENT CO. & IT IS NOT TO BE USED OR REPRODUCED WITHOUT THE PERMISSION FROM AVW CO.

DRAWN BY

Tittu

CUSTOMER: AVW Equipment Co.

CHECKED BY

PROJECT: MC2-Full Mitter Hydraulic

QTY

DESCRIPTION: Basket Support Rod 1/2in x 27in LG

RELEASE DATE

10/13/2021

PART NUMBER: MC1C1

REV#

DIMENSION ARE IN INCHES & PROVIDED PRIOR TO SURFACE TREATMENTS, UNLESS NOTED.

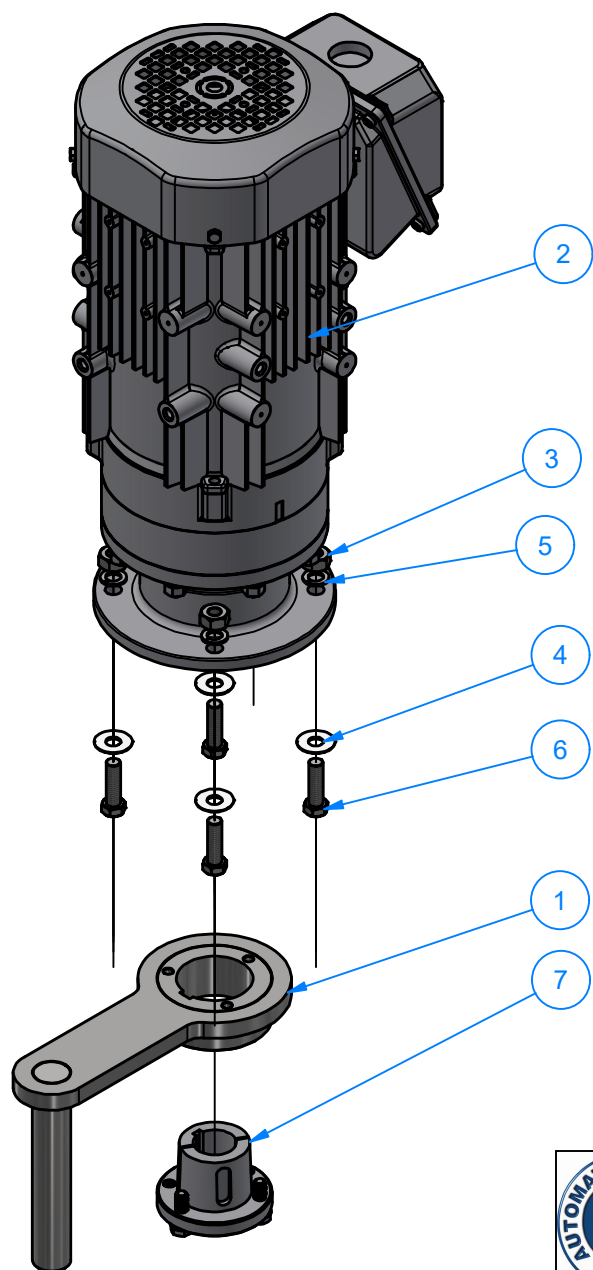
SIZE  
A

EST WEIGHT:

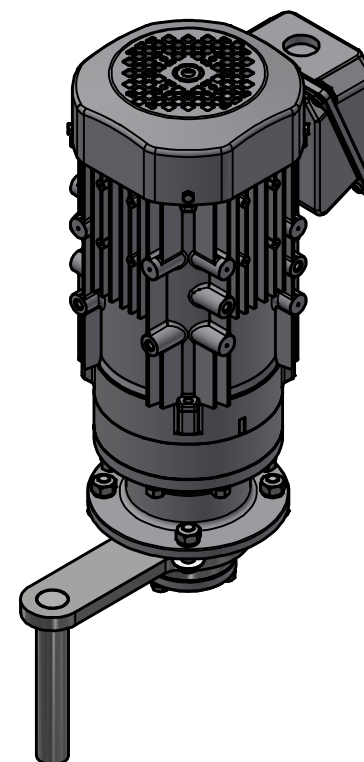
SHEET 19 of 22

PATH:L:\Libraries\Productivity\Mitter Parts\Mitter Rods\Parts\MC1C1 - Basket Support Rod 1\_2in x 27in LG.ipt

# MC2BB-EL-0914 - Basket Drive Assembly Electric



| Parts List |     |                                    |
|------------|-----|------------------------------------|
| ITEM       | QTY | DESCRIPTION                        |
| 1          | 1   | Cam Arm 6" (w/ Welded Weld-On Hub) |
| 2          | 1   | Sumitomo Gearmotor 1 1/8" Shaft    |
| 3          | 4   | 3/8"-16 18-8ss Heavy Hex Nut       |
| 4          | 4   | 3/8" Flat Washer                   |
| 5          | 4   | 3/8" Split Lock Washer             |
| 6          | 4   | 3/8" - 16 x 1 1/4" UNC Hex Screw   |
| 7          | 1   | P1 - 1-1/8" Bushing                |



AVW EQUIPMENT CO., INC.  
105 S. 9TH AVENUE  
MAYWOOD, IL 60153  
Tel: 708-343-7738 Fax: 708-343-9065  
WWW.AVWEQUIPMENT.COM

## - COMPANY PROPRIETARY NOTE -

THIS DRAWING AND ITS DESIGNS ARE PROPERTY OF AVW EQUIPMENT CO. & IT IS NOT TO BE USED OR REPRODUCED WITHOUT THE PERMISSION FROM AVW CO.

DRAWN BY

Tittu

CUSTOMER: AVW Equipment Co.

CHECKED BY

PROJECT: MC2-Full Mitter Hydraulic

QTY

DESCRIPTION: Basket Drive Assembly Electric

RELEASE DATE

10/13/2021

PART NUMBER: MC2BB-EL-0914

REV#

DIMENSION ARE IN INCHES & PROVIDED PRIOR TO SURFACE TREATMENTS, UNLESS NOTED.

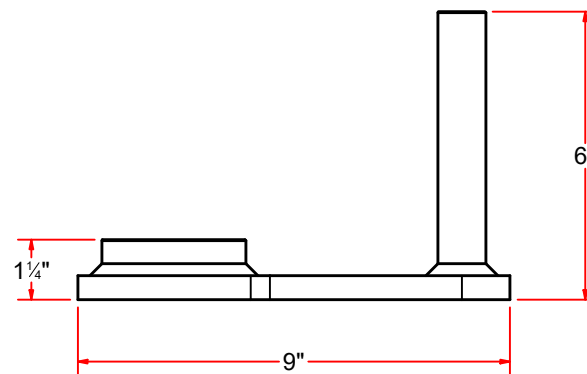
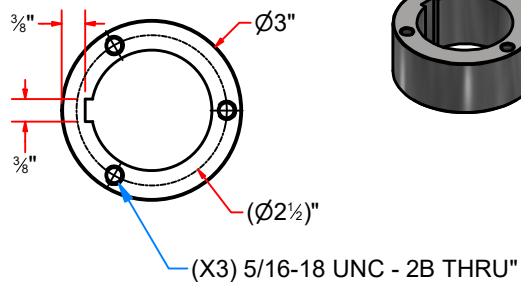
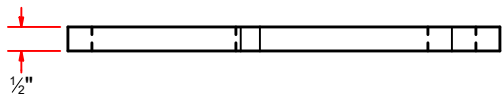
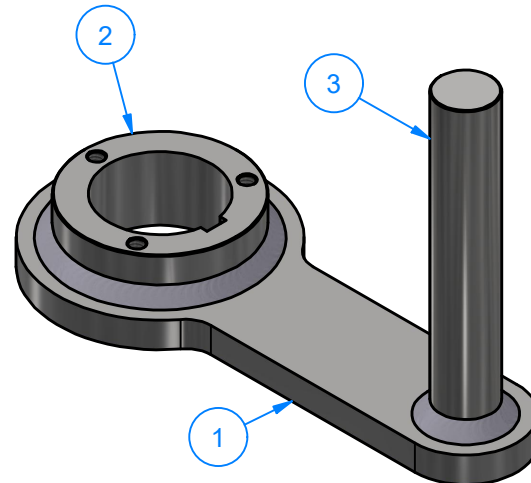
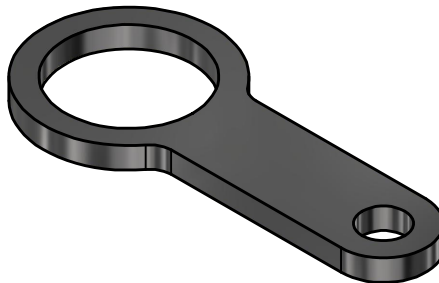
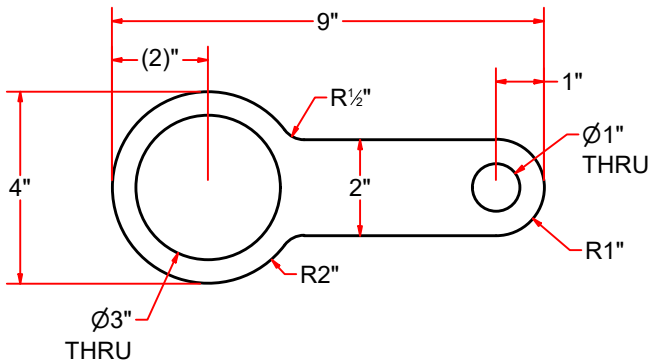
SIZE  
A

EST WEIGHT:

SHEET 20 of 22

## MC2BBA-P1-0615 - Cam Arm 6" (w/ Welded Weld-On Hub)

| Parts List |     |                       |
|------------|-----|-----------------------|
| ITEM       | QTY | DESCRIPTION           |
| 1          | 1   | Plate #1/2" x 9" x 4" |
| 2          | 1   | Hub - Cam Arm         |
| 3          | 1   | Rod 1" OD x 6" LG.    |



**AVW EQUIPMENT CO., INC.**  
105 S. 9TH AVENUE  
MAYWOOD, IL 60153  
Tel: 708-343-7738 Fax: 708-343-9065  
[WWW.AVWEQUIPMENT.COM](http://WWW.AVWEQUIPMENT.COM)

- COMPANY PROPRIETARY NOTE -

THIS DRAWING AND ITS DESIGNS ARE PROPERTY OF AVW EQUIPMENT CO. & IT IS NOT TO BE USED OR REPRODUCED WITHOUT THE PERMISSION FROM AVW CO.

DRAWN BY

Tittu

CUSTOMER: AVW Equipment Co.

CHECKED BY

PROJECT: MC2-Full Mitter Hydraulic

QTY

DESCRIPTION: Cam Arm 6" (w/ Welded Weld-On Hub)

RELEASE  
DATE

10/13/2021

PART NUMBER: MC2BBA-P1-0615

REV#

DIMENSION ARE IN INCHES & PROVIDED PRIOR  
TO SURFACE TREATMENTS, UNLESS NOTED.

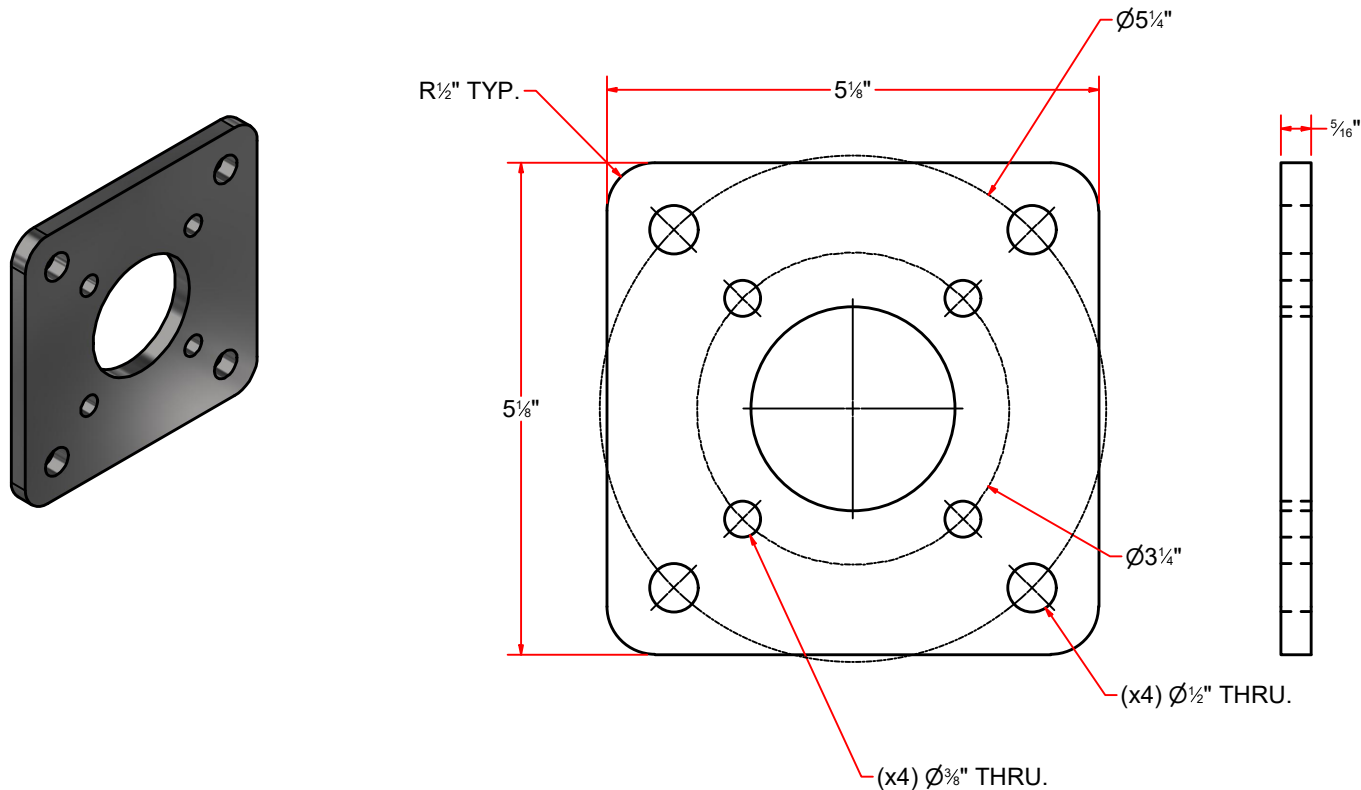
SIZE  
A

EST WEIGHT:

SHEET 21 of 22

PATH:L:\Libraries\AVW Components\Cam Arm\Cam Arm 6in\MC2BBA-P1-0615.iam

# MM5E - Hydraulic Motor Mount Adaptor plate



AVW EQUIPMENT CO., INC.  
105 S. 9TH AVENUE  
MAYWOOD, IL 60153  
Tel: 708-343-7738 Fax: 708-343-9065  
WWW.AVWEQUIPMENT.COM

## - COMPANY PROPRIETARY NOTE -

THIS DRAWING AND ITS DESIGNS ARE PROPERTY OF AVW EQUIPMENT CO. & IT IS NOT TO BE USED OR REPRODUCED WITHOUT THE PERMISSION FROM AVW CO.

DRAWN BY

Tittu

CUSTOMER: AVW Equipment Co.

CHECKED BY

PROJECT: MC2-Full Mitter Hydraulic

QTY

DESCRIPTION: Hydraulic Motor Mount Adaptor plate

RELEASE DATE

10/13/2021

PART NUMBER: MM5E

REV#

DIMENSION ARE IN INCHES & PROVIDED PRIOR TO SURFACE TREATMENTS, UNLESS NOTED.

SIZE  
A

EST WEIGHT:

SHEET 22 of 22

PATH: L:\Libraries\AVW Components\Plates\Motor Mount Plates\Hydraulic Motor Plates\Mitter Hydraulic motor mount Adapter plate.ipt