



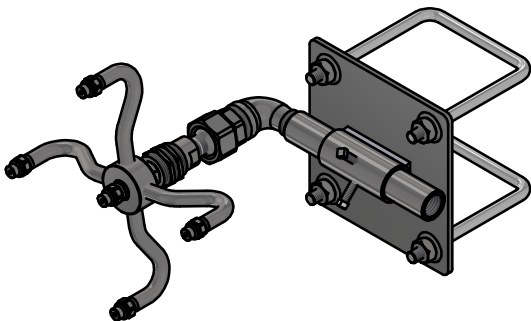
Set-Mirror Spinner Assembly

MS1

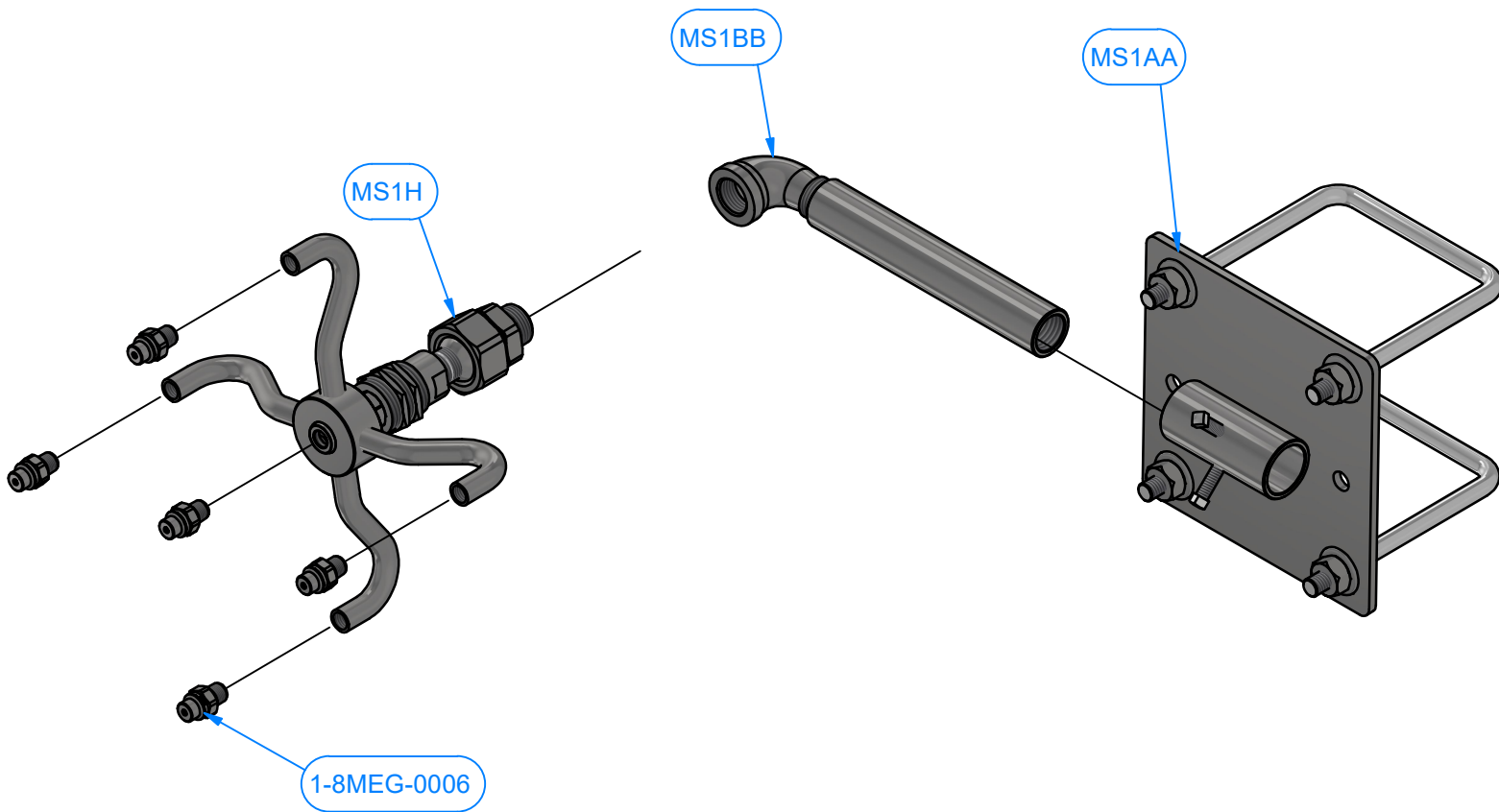


Mirror Spinner Assembly (One Side) - MS1A

Parts List		
PART NUMBER	QTY	DESCRIPTION
1-8MEG-0006	5	Nozzle (MEG) 1_8in MNPT, #0006, SS
MS1AA	1	Mirror Spinner Mounting Plate Assembly
MS1BB	1	Pipe (Spinner Arm) Assembly
MS1H	1	Mirror Spinner Head Assembly



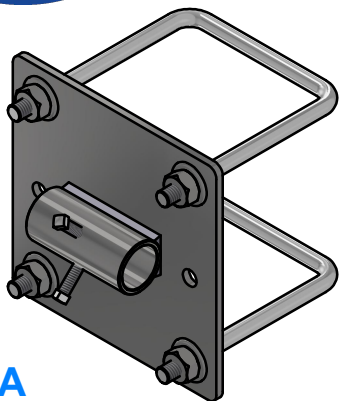
MS1A
Mirror Spinner Assembly (One Side)





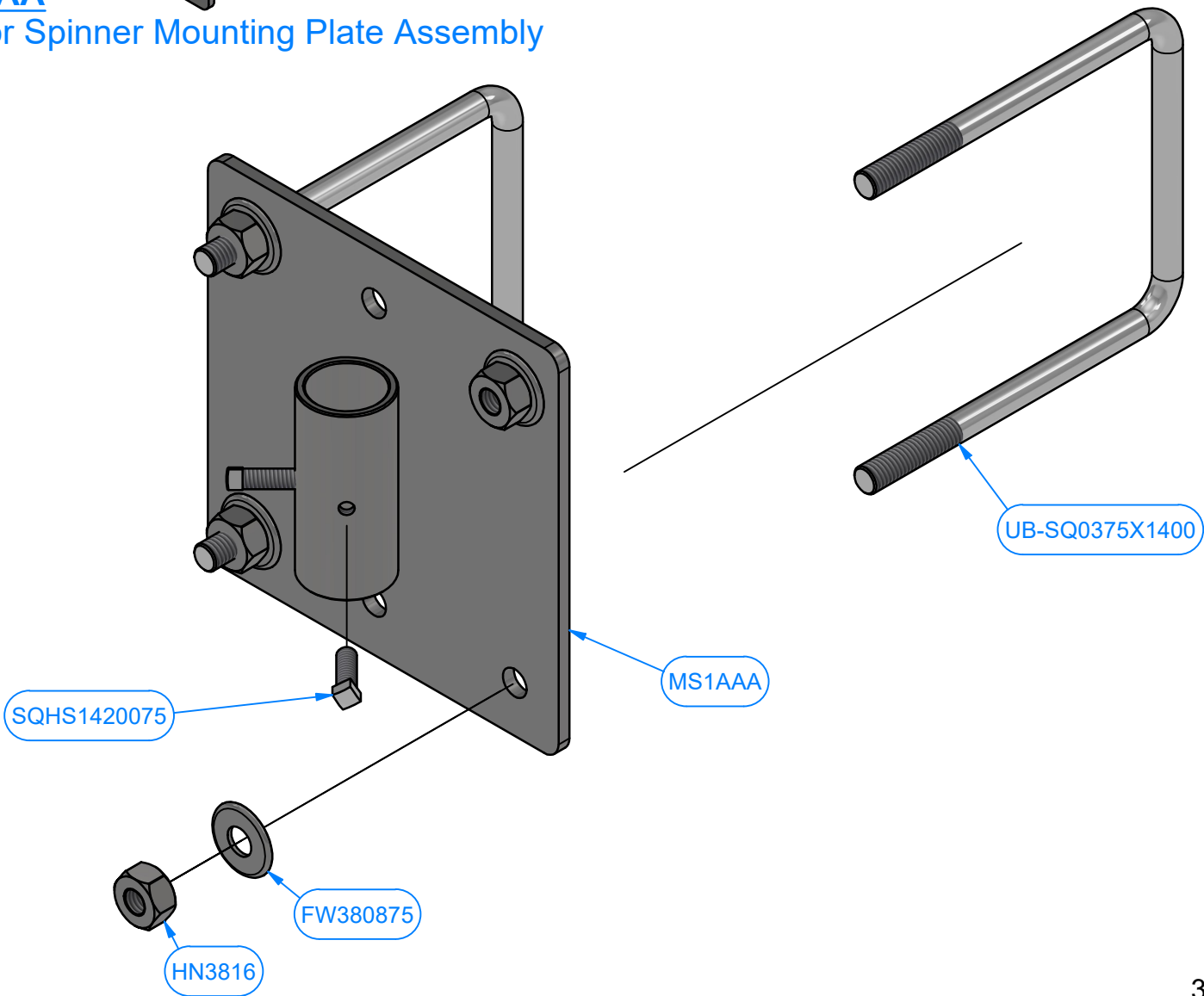
Mirror Spinner Mounting Plate Assembly - MS1AA

Parts List		
PART NUMBER	QTY	DESCRIPTION
UB-SQ0375X1400	2	U-Bolt (Square): 3/8" x 4" x 5"
HN3816	4	Hex Nut: 3/8"-16, SS
FW380875	4	Flat Washer: 3/8" x 7/8" USS
SQHS1420075	2	Square Head Screw - 1/4"-20 x 3/4" SS
MS1AAA	1	Mounting Plate Weldment



MS1AA

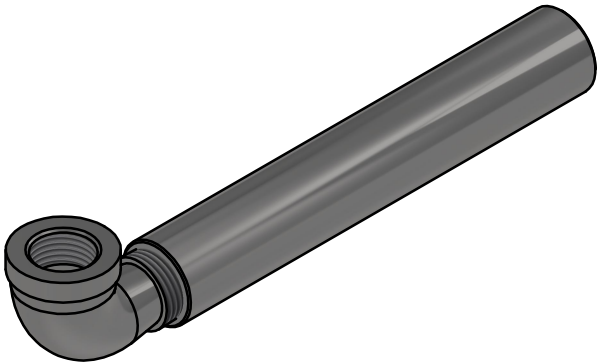
Mirror Spinner Mounting Plate Assembly



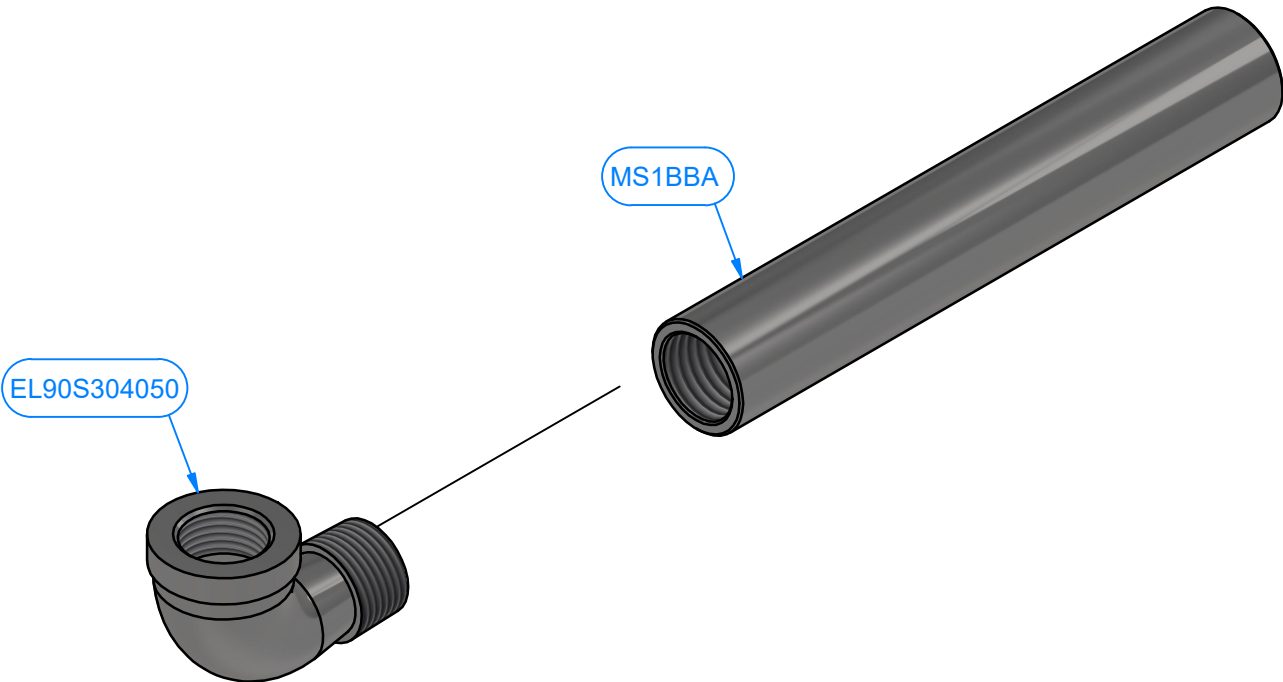


Pipe (Spinner Arm) Assembly - MS1BB

Parts List		
PART NUMBER	QTY	DESCRIPTION
MS1BBA	1	1" Tube [11Ga] x 6" LG, 1/2"NPT Threads
EL90S304050	1	Elbow-90Deg Street, 1/2" NPT, 150# SS 304

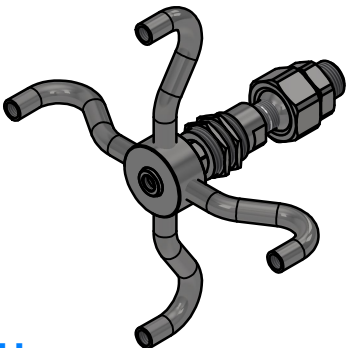


MS1BB
Pipe (Spinner Arm) Assembly





Mirror Spinner Head Assembly - MS1H



Parts List			
ITEM	PART NUMBER	QTY	DESCRIPTION
1	RTR-ARM-87-846	1	T-Bar, 4 Arms 8" x 8" w/ Nozzle Outlets
2	SWIVEL-33-163	1	Swivel - DGG Heavy Duty w/ Bulkhead Fitting, SS
3	NPL3040375CL	1	Nipple, 3/8" x Close, TBE, NPT SS 304, SCH 40
4	BLLFTTNG303050x0375	1	Ball Fitting 1/2" MNPT x 3/8" FNPT

MS1H
Mirror Spinner Head Assembly

