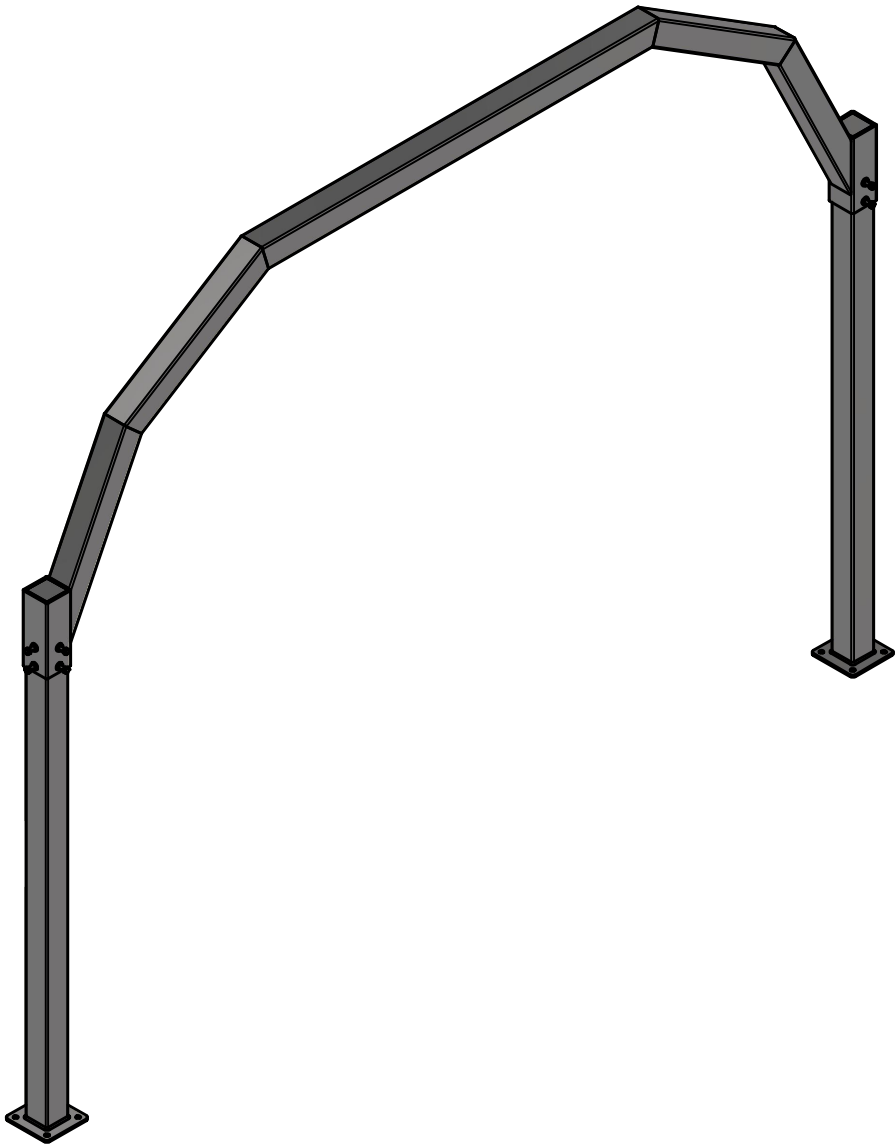


OT2-AA0 - OCTASQUARE EMPTY ARCH

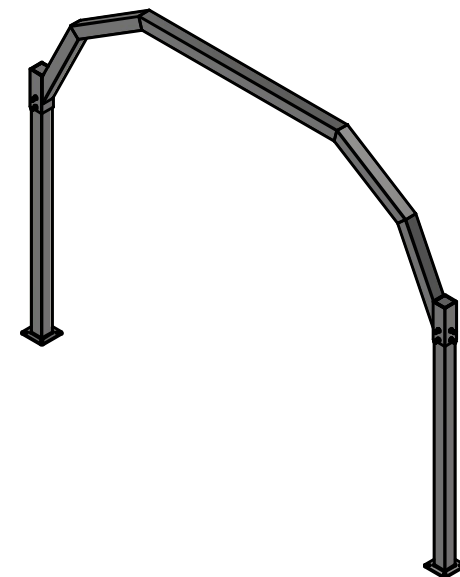
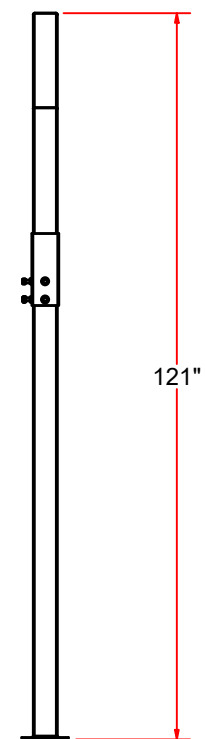
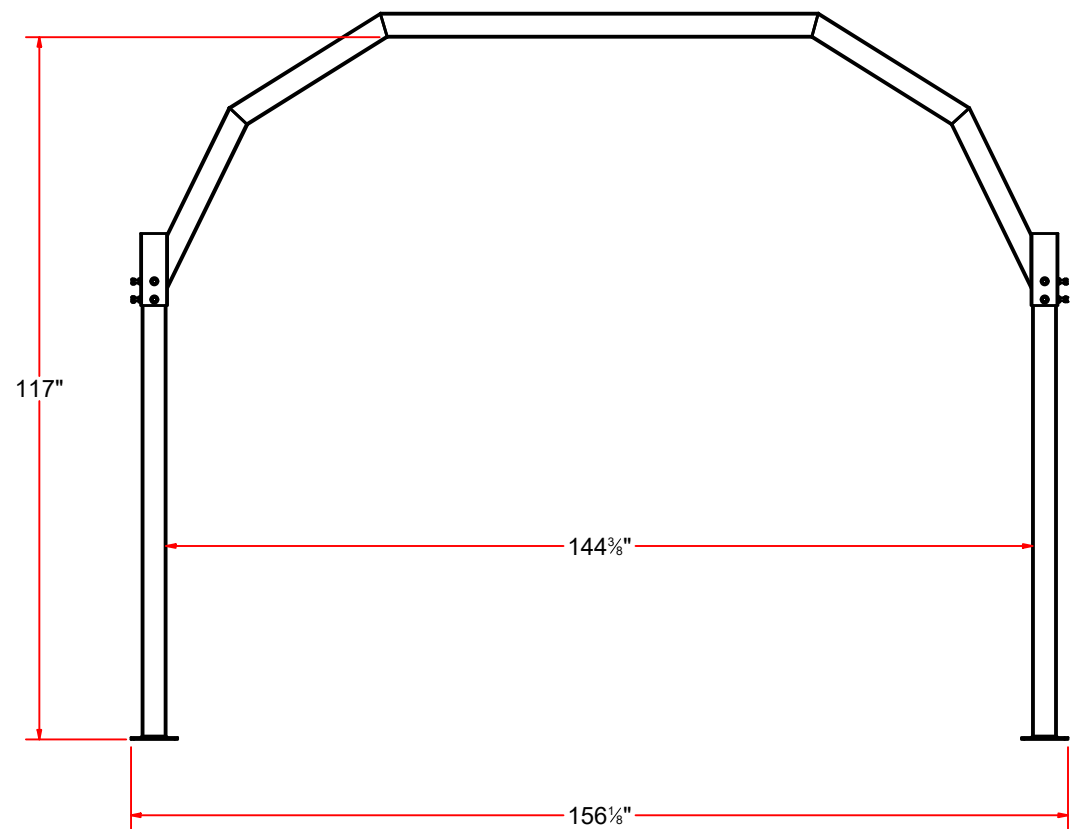



AVW EQUIPMENT CO., INC.
105 S. 9TH AVENUE
MAYWOOD, IL 60153
Tel: 708-343-7738 Fax: 708-343-9065
WWW.AVWEQUIPMENT.COM

- COMPANY PROPRIETARY NOTE -
THIS DRAWING AND ITS DESIGNS ARE PROPERTY OF AVW EQUIPMENT CO. &
IT IS NOT TO BE USED OR REPRODUCED WITHOUT THE PERMISSION FROM AVW CO.

DRAWN BY	Dusan	CUSTOMER: AVW Equipment Co	
CHECKED BY		PROJECT: Octasquare Empty Arch	
QTY		DESCRIPTION: OCTASQUARE EMPTY ARCH	
RELEASE DATE	12/9/2020	PART NUMBER: OT2-AA0	REV# 2
DIMENSION ARE IN INCHES & PROVIDED PRIOR TO SURFACE TREATMENTS, UNLESS NOTED.		SIZE A	EST WEIGHT: 308 lbmass
			SHEET 1 of 7

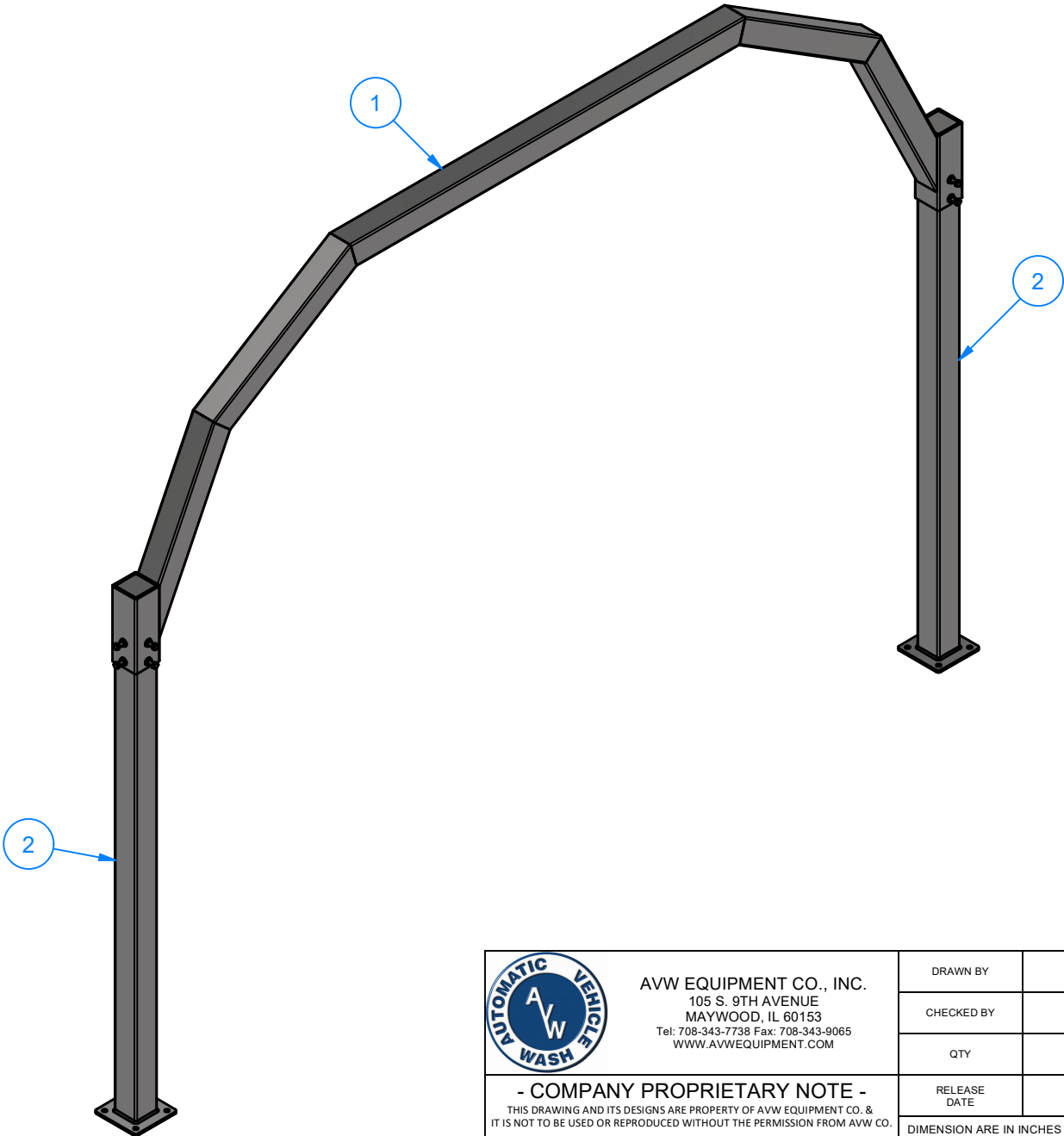
OT2-AA0 - OCTASQUARE EMPTY ARCH



 <div>AVW EQUIPMENT CO., INC. 105 S. 9TH AVENUE MAYWOOD, IL 60153 Tel: 708-343-7738 Fax: 708-343-9065 WWW.AVWEQUIPMENT.COM</div>	DRAWN BY	Dusan	CUSTOMER: AVW Equipment Co	
	CHECKED BY		PROJECT: Octasquare Empty Arch	
	QTY		DESCRIPTION: OCTASQUARE EMPTY ARCH	
	RELEASE DATE	12/9/2020	PART NUMBER: OT2-AA0	REV# 2
- COMPANY PROPRIETARY NOTE - THIS DRAWING AND ITS DESIGNS ARE PROPERTY OF AVW EQUIPMENT CO. & IT IS NOT TO BE USED OR REPRODUCED WITHOUT THE PERMISSION FROM AVW CO.		DIMENSION ARE IN INCHES & PROVIDED PRIOR TO SURFACE TREATMENTS, UNLESS NOTED.		
		SIZE A	EST WEIGHT: 308 lbmass	SHEET 2 of 7
PATH:L:\Designs\Product Lines\Arches\Empty Arches\OctaSquard Empty Arch_OT2-AA0 [Rev2]\OT2-AA0.iam				

OT2-AA0 - OCTASQUARE EMPTY ARCH

Parts List		
ITEM	QTY	DESCRIPTION
1	1	OCTASQUARE EMPTY ARCH CROSSBAR
2	2	OCTASQUARE EMPTY ARCH LEG - 84" LG.



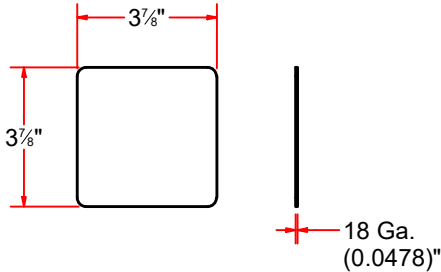
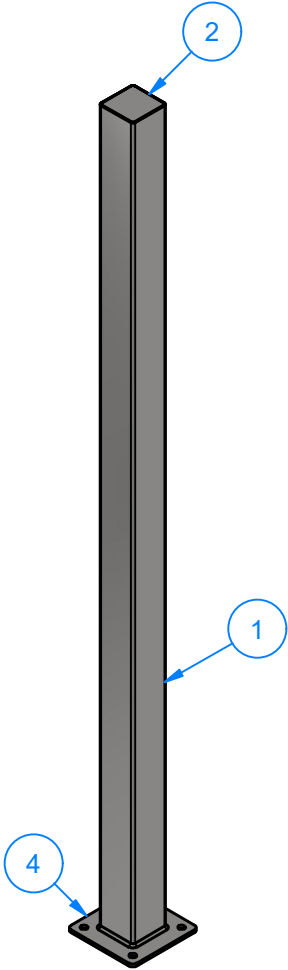
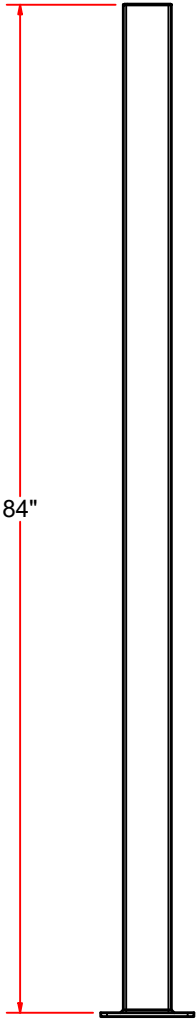
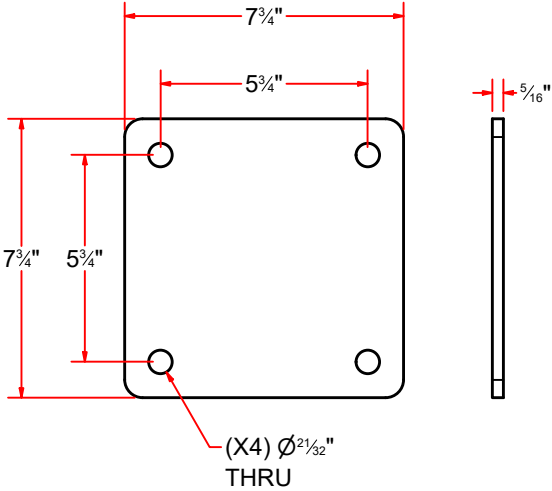
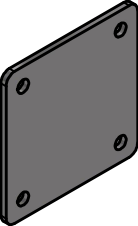
AVW EQUIPMENT CO., INC.
105 S. 9TH AVENUE
MAYWOOD, IL 60153
Tel: 708-343-7738 Fax: 708-343-9065
WWW.AVWEQUIPMENT.COM

- COMPANY PROPRIETARY NOTE -
THIS DRAWING AND ITS DESIGNS ARE PROPERTY OF AVW EQUIPMENT CO. &
IT IS NOT TO BE USED OR REPRODUCED WITHOUT THE PERMISSION FROM AVW CO.

DRAWN BY	Dusan	CUSTOMER: AVW Equipment Co	
CHECKED BY		PROJECT: Octasquare Empty Arch	
QTY		DESCRIPTION: OCTASQUARE EMPTY ARCH	
RELEASE DATE	12/9/2020	PART NUMBER: OT2-AA0	REV# 2
DIMENSION ARE IN INCHES & PROVIDED PRIOR TO SURFACE TREATMENTS, UNLESS NOTED.		SIZE A	EST WEIGHT: 308 lbmass
			SHEET 3 of 7

OT2-AA0A - OCTASQUARE EMPTY ARCH LEG - 84" LG.

Parts List		
ITEM	QTY	DESCRIPTION
1	1	Sq. Tubing [7 Gauge] 4" x 84" LG
2	1	SS Sheet Metal #18Ga x 3 7/8"
4	1	SS Plate #5/16" x 7-3/4" x 7-3/4"

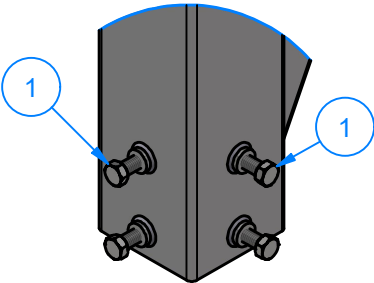
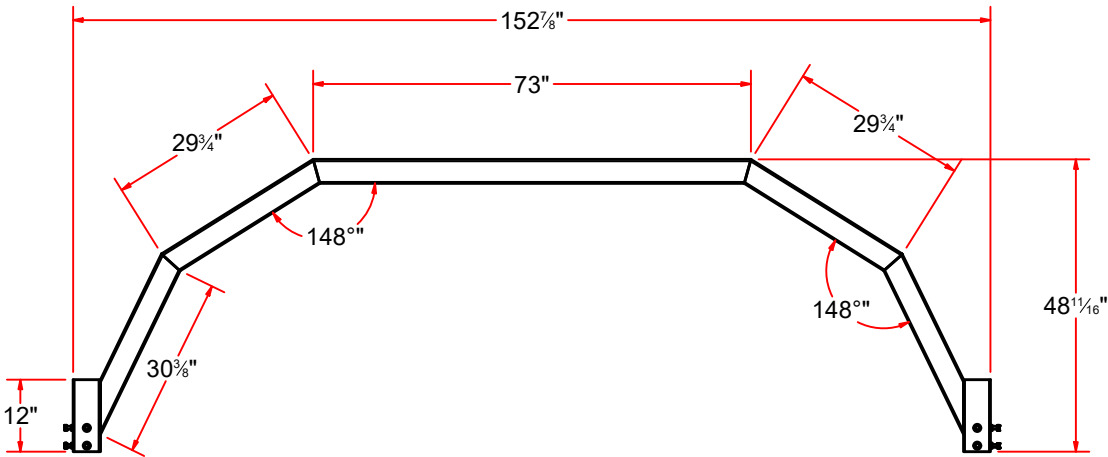


AVW EQUIPMENT CO., INC.
105 S. 9TH AVENUE
MAYWOOD, IL 60153
Tel: 708-343-7738 Fax: 708-343-9065
WWW.AVWEQUIPMENT.COM

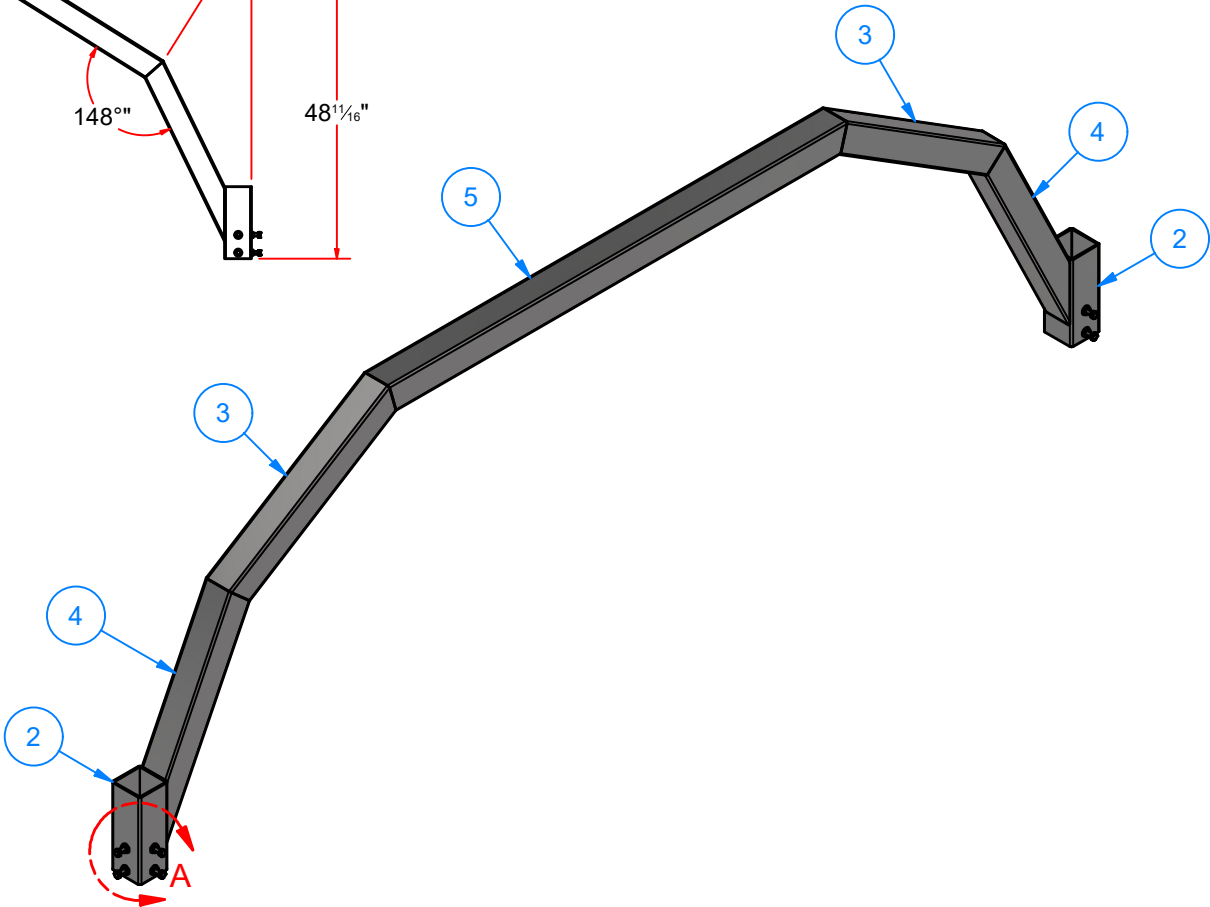
- COMPANY PROPRIETARY NOTE -
THIS DRAWING AND ITS DESIGNS ARE PROPERTY OF AVW EQUIPMENT CO. &
IT IS NOT TO BE USED OR REPRODUCED WITHOUT THE PERMISSION FROM AVW CO.

DRAWN BY	Dusan	CUSTOMER: AVW Equipment Co	
CHECKED BY		PROJECT: Octasquare Empty Arch	
QTY		DESCRIPTION: OCTASQUARE EMPTY ARCH LEG - 84" LG.	
RELEASE DATE	12/9/2020	PART NUMBER: OT2-AA0A	REV# 2
DIMENSION ARE IN INCHES & PROVIDED PRIOR TO SURFACE TREATMENTS, UNLESS NOTED.		SIZE A	EST WEIGHT: 71 lbmass
		SHEET 4 of 7	

OT2-AA0B - OCTASQUARE EMPTY ARCH CROSSBAR



DETAIL A



Parts List		
ITEM	QTY	DESCRIPTION
1	8	1/2" - 13 x 1.25" UNC Hex Screw
2	2	SLEEVE 4 1/2" SQ. x 12" LG.
3	2	Sq.Tubing [7 Ga.] 4" x 29 3/4" LG.
4	2	Sq.Tubing [7 Ga.] 4" x 31 1/2" LG.
5	1	Sq.Tubing [7 Ga.] 4" x 73" LG.

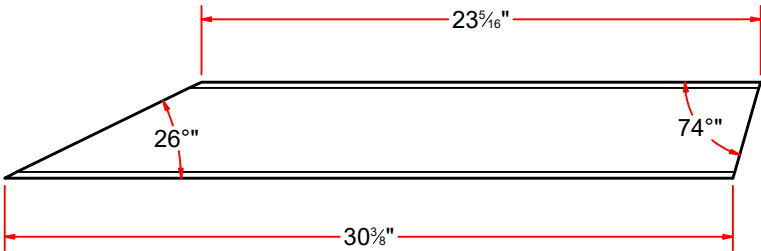
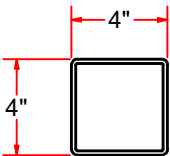
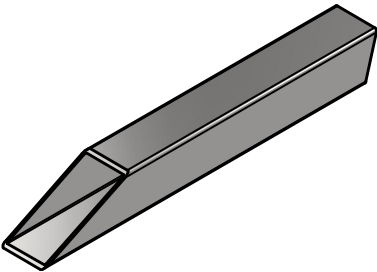


AVW EQUIPMENT CO., INC.
105 S. 9TH AVENUE
MAYWOOD, IL 60153
Tel: 708-343-7738 Fax: 708-343-9065
WWW.AVWEQUIPMENT.COM

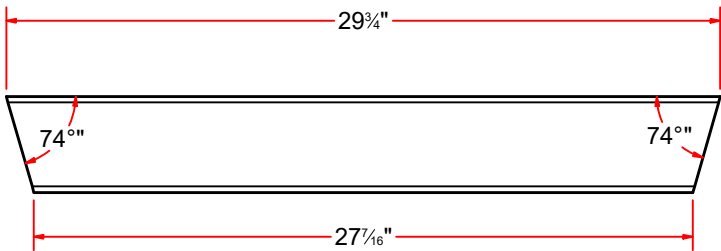
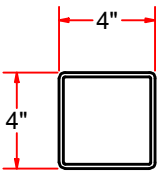
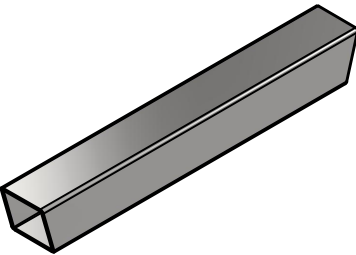
- COMPANY PROPRIETARY NOTE -
THIS DRAWING AND ITS DESIGNS ARE PROPERTY OF AVW EQUIPMENT CO. &
IT IS NOT TO BE USED OR REPRODUCED WITHOUT THE PERMISSION FROM AVW CO.

DRAWN BY	Dusan	CUSTOMER: AVW Equipment Co	
CHECKED BY		PROJECT: Octasquare Empty Arch	
QTY		DESCRIPTION: OCTASQUARE EMPTY ARCH CROSSBAR	
RELEASE DATE	12/9/2020	PART NUMBER: OT2-AA0B	REV# 2
DIMENSION ARE IN INCHES & PROVIDED PRIOR TO SURFACE TREATMENTS, UNLESS NOTED.		SIZE A	EST WEIGHT: 165 lbmass
			SHEET 5 of 7

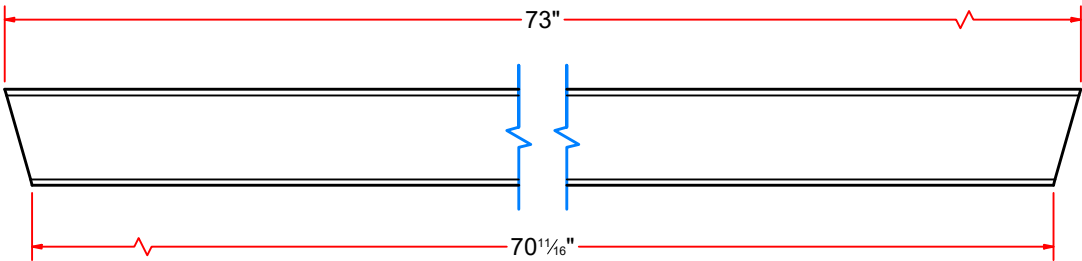
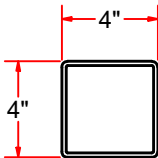
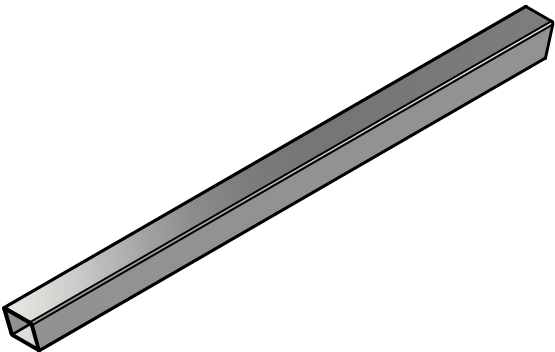
OCTASQUARED TOP CROSSBAR - **Parts**



Sq.Tubing [7 Ga.] 4" x 31 1/2" LG.



Sq.Tubing [7 Ga.] 4" x 29 3/4" LG.



Sq.Tubing [7 Ga.] 4" x 73" LG.

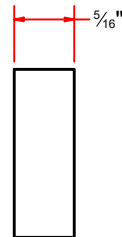
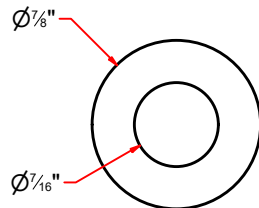
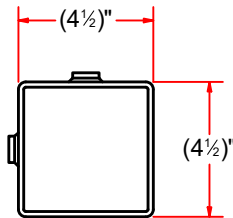
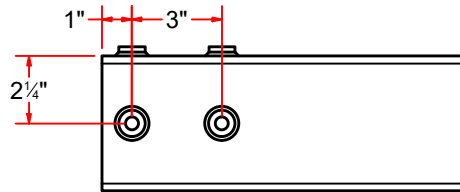
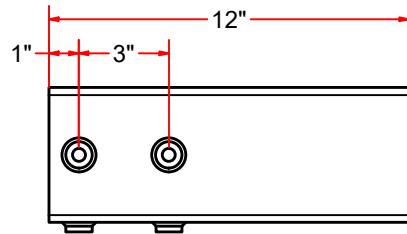


AVW EQUIPMENT CO., INC.
105 S. 9TH AVENUE
MAYWOOD, IL 60153
Tel: 708-343-7738 Fax: 708-343-9065
WWW.AVWEQUIPMENT.COM

- COMPANY PROPRIETARY NOTE -
THIS DRAWING AND ITS DESIGNS ARE PROPERTY OF AVW EQUIPMENT CO. &
IT IS NOT TO BE USED OR REPRODUCED WITHOUT THE PERMISSION FROM AVW CO.

DRAWN BY	Dusan	CUSTOMER: AVW Equipment Co	
CHECKED BY		PROJECT: Octasquare Empty Arch	
QTY		DESCRIPTION: Sq.Tubing [7 Ga.] 4" x 31 1/2" LG.	
RELEASE DATE	12/9/2020	PART NUMBER: OT2-AA0BC	REV# 2
DIMENSION ARE IN INCHES & PROVIDED PRIOR TO SURFACE TREATMENTS, UNLESS NOTED.		SIZE A	EST WEIGHT:
			SHEET 6 of 7

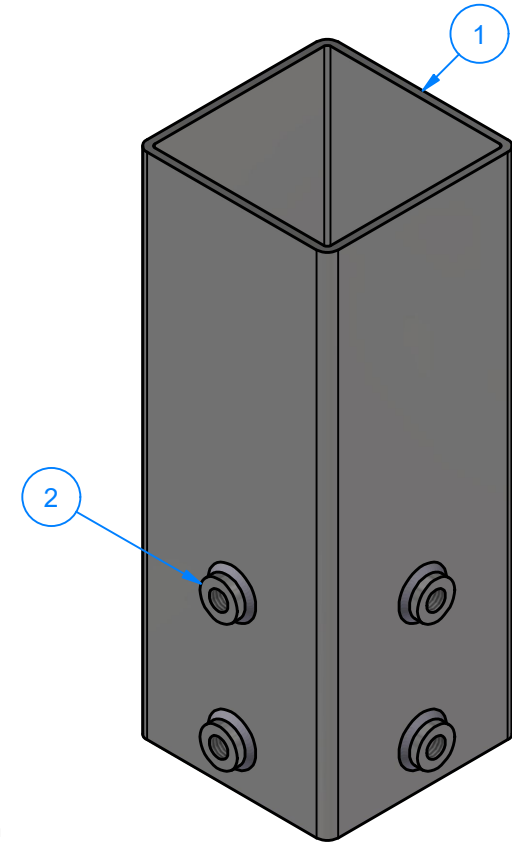
SLEEVE 4 1/2" SQ. x 12" LG.



NOTES:

- 1) WELD NUTS AS SHOWN.
- 2) DRILL THRU SLEEVE USING NUTS AS GUIDE.
- 3) TAP 1/2"-13 THRU ALL HOLES

Parts List		
ITEM	QTY	DESCRIPTION
1	1	Sq. Tubing [7 Ga.] 4 1/2" x 12" LG
2	4	Sleeve Nut 1/2" #5/16" x 7/8"OD x 7/16"ID



AVW EQUIPMENT CO., INC.
105 S. 9TH AVENUE
MAYWOOD, IL 60153
Tel: 708-343-7738 Fax: 708-343-9065
WWW.AVWEQUIPMENT.COM

- COMPANY PROPRIETARY NOTE -

THIS DRAWING AND ITS DESIGNS ARE PROPERTY OF AVW EQUIPMENT CO. & IT IS NOT TO BE USED OR REPRODUCED WITHOUT THE PERMISSION FROM AVW CO.

DRAWN BY

Dusan

CUSTOMER: AVW Equipment Co

CHECKED BY

PROJECT: Octasquare Empty Arch

QTY

DESCRIPTION: SLEEVE 4 1/2" SQ. x 12" LG.

RELEASE DATE

12/9/2020

PART NUMBER: AA0BA

REV# 2

DIMENSION ARE IN INCHES & PROVIDED PRIOR TO SURFACE TREATMENTS, UNLESS NOTED.

SIZE
A

EST WEIGHT: 11

SHEET 7 of 7

PATH:L:\Libraries\Productivity\Sleeves\Sq. Tubing [7 Gauge] 4.5 in x 12 in LG_Weldment\Sleeve 4.5 in x 12 in LG.iam