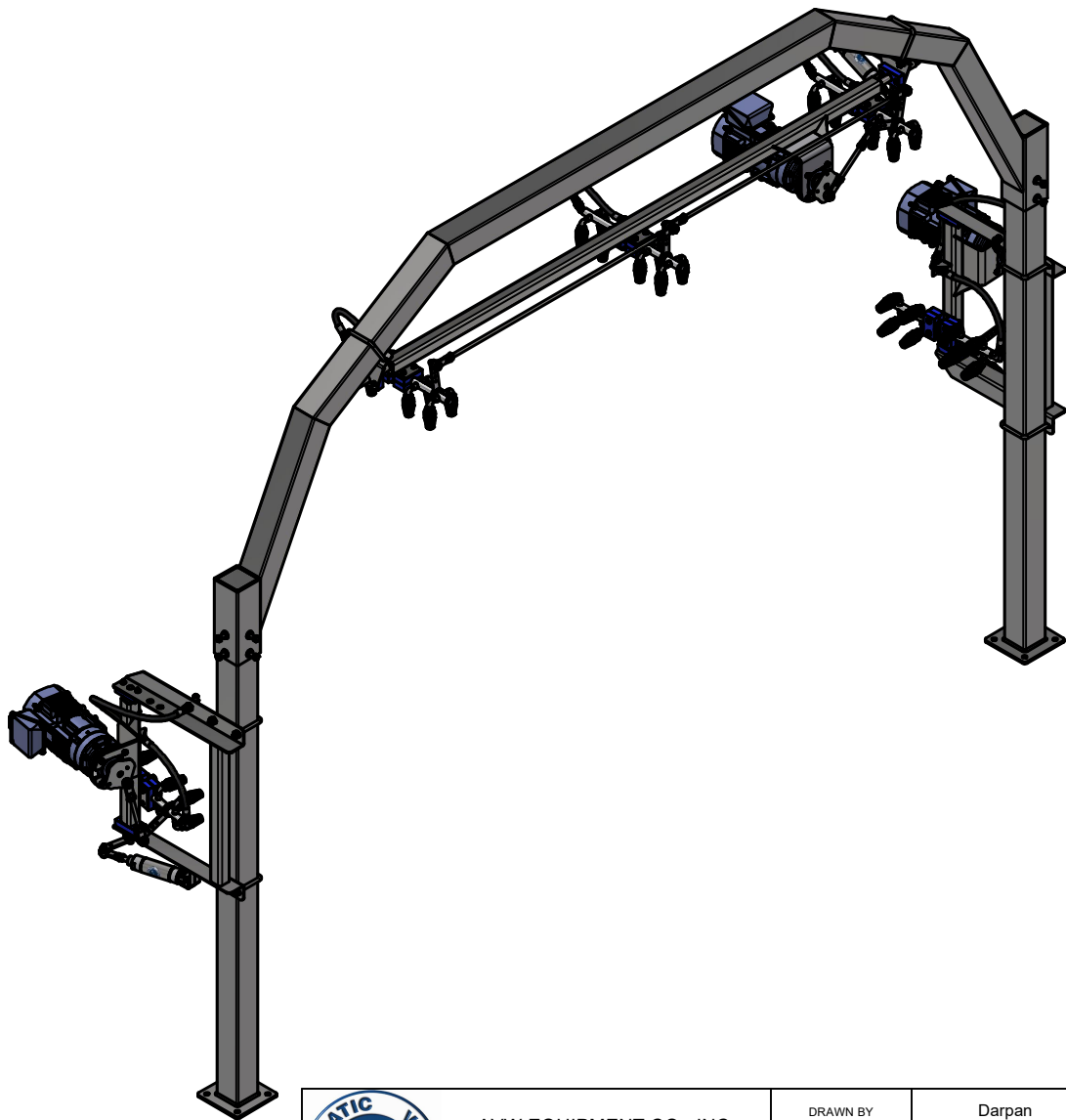


OT2-PO1-EL - Octasquare Pivoting Oscillating High Pressure Arch - Electric

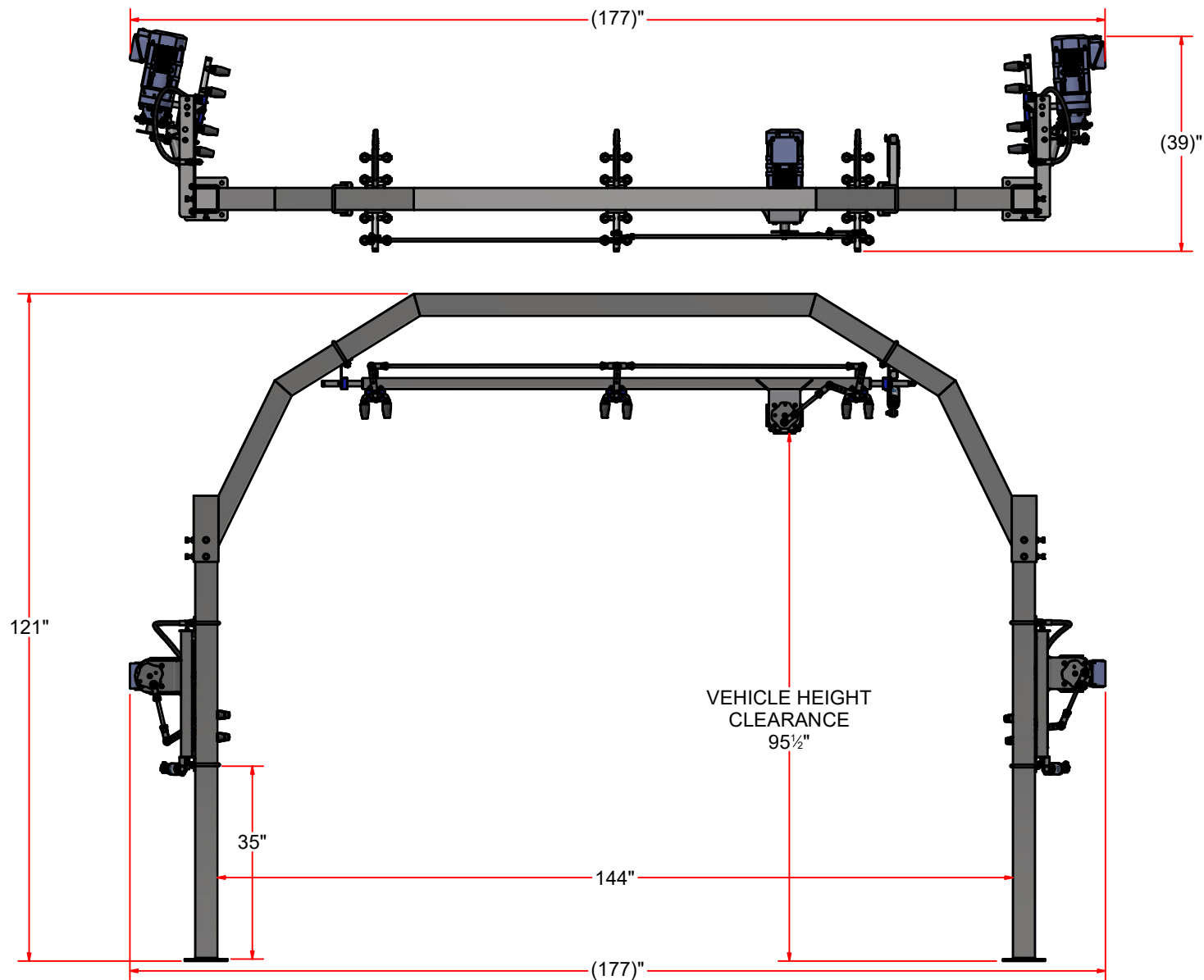


AVW EQUIPMENT CO., INC.
105 S. 9TH AVENUE
MAYWOOD, IL 60153
Tel: 708-343-7738 Fax: 708-343-9065
WWW.AVWEQUIPMENT.COM

- COMPANY PROPRIETARY NOTE -
THIS DRAWING AND ITS DESIGNS ARE PROPERTY OF AVW EQUIPMENT CO. &
IT IS NOT TO BE USED OR REPRODUCED WITHOUT THE PERMISSION FROM AVW CO.

DRAWN BY	Darpan	CUSTOMER: AVW Equipment Co.	
CHECKED BY		PROJECT: Octasquare Pivoting Oscillating High Pressure Arch - Electric	
QTY		DESCRIPTION: Octasquare Pivoting Oscillating High Pressure Arch - Electric	
RELEASE DATE	11/4/2021	PART NUMBER: OT2-PO1-EL	REV# 1
DIMENSION ARE IN INCHES & PROVIDED PRIOR TO SURFACE TREATMENTS, UNLESS NOTED.		SIZE A	EST WEIGHT: SHEET 1 of 46

OT2-PO1-EL - Octasquare Pivoting Oscillating High Pressure Arch - Electric



AVW EQUIPMENT CO., INC.
105 S. 9TH AVENUE
MAYWOOD, IL 60153
Tel: 708-343-7738 Fax: 708-343-9065
WWW.AVWEQUIPMENT.COM

- COMPANY PROPRIETARY NOTE -

THIS DRAWING AND ITS DESIGNS ARE PROPERTY OF AVW EQUIPMENT CO. & IT IS NOT TO BE USED OR REPRODUCED WITHOUT THE PERMISSION FROM AVW CO.

DRAWN BY

Darpan

CUSTOMER: AVW Equipment Co.

CHECKED BY

PROJECT: Octasquare Pivoting Oscillating High Pressure Arch - Electric

QTY

DESCRIPTION: Octasquare Pivoting Oscillating High Pressure Arch - Electric

RELEASE
DATE

11/4/2021

PART NUMBER: OT2-PO1-EL

REV# 1

DIMENSION ARE IN INCHES & PROVIDED PRIOR TO SURFACE TREATMENTS, UNLESS NOTED.

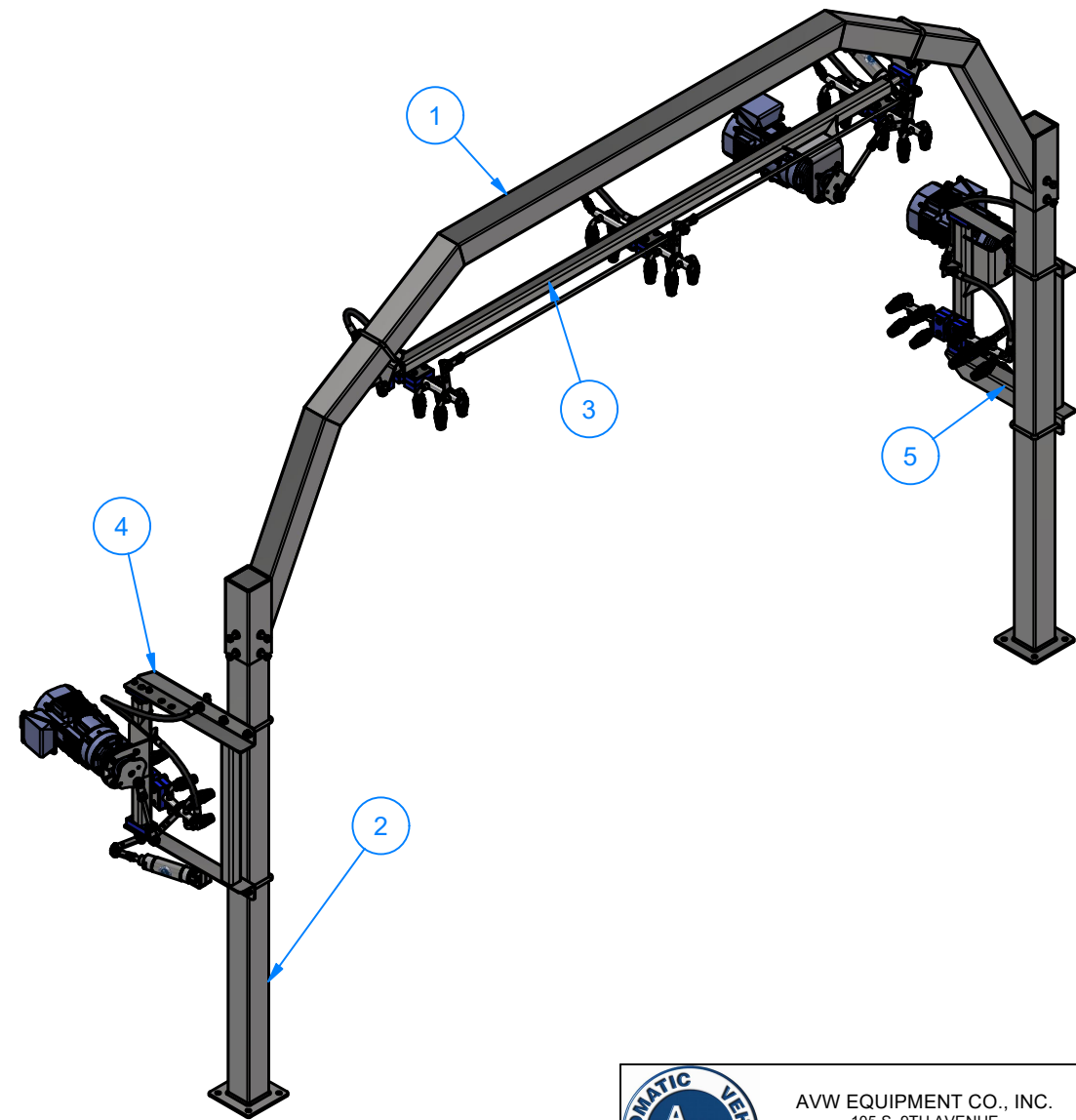
SIZE
A

EST WEIGHT:

SHEET 2 of 46

PATH:L:\Designs\Product Lines\High Pressure Arches\Octasquare\OT2-PO1-EL\OT2-PO1-EL.iam

OT2-PO1-EL - Octasquare Pivoting Oscillating High Pressure Arch - Electric



Parts List		
ITEM	QTY	DESCRIPTION
1	1	Octasquare Empty Arch Crossbar
2	2	Octasquare Empty Arch Leg - 84" LG.
3	1	Octasquare Pivoting Oscillating Top Manifold Assembly - EL
4	1	Pivoting Oscillating Side Manifold - Passenger - EL
5	1	Pivoting Oscillating Side Manifold - Driver - EL

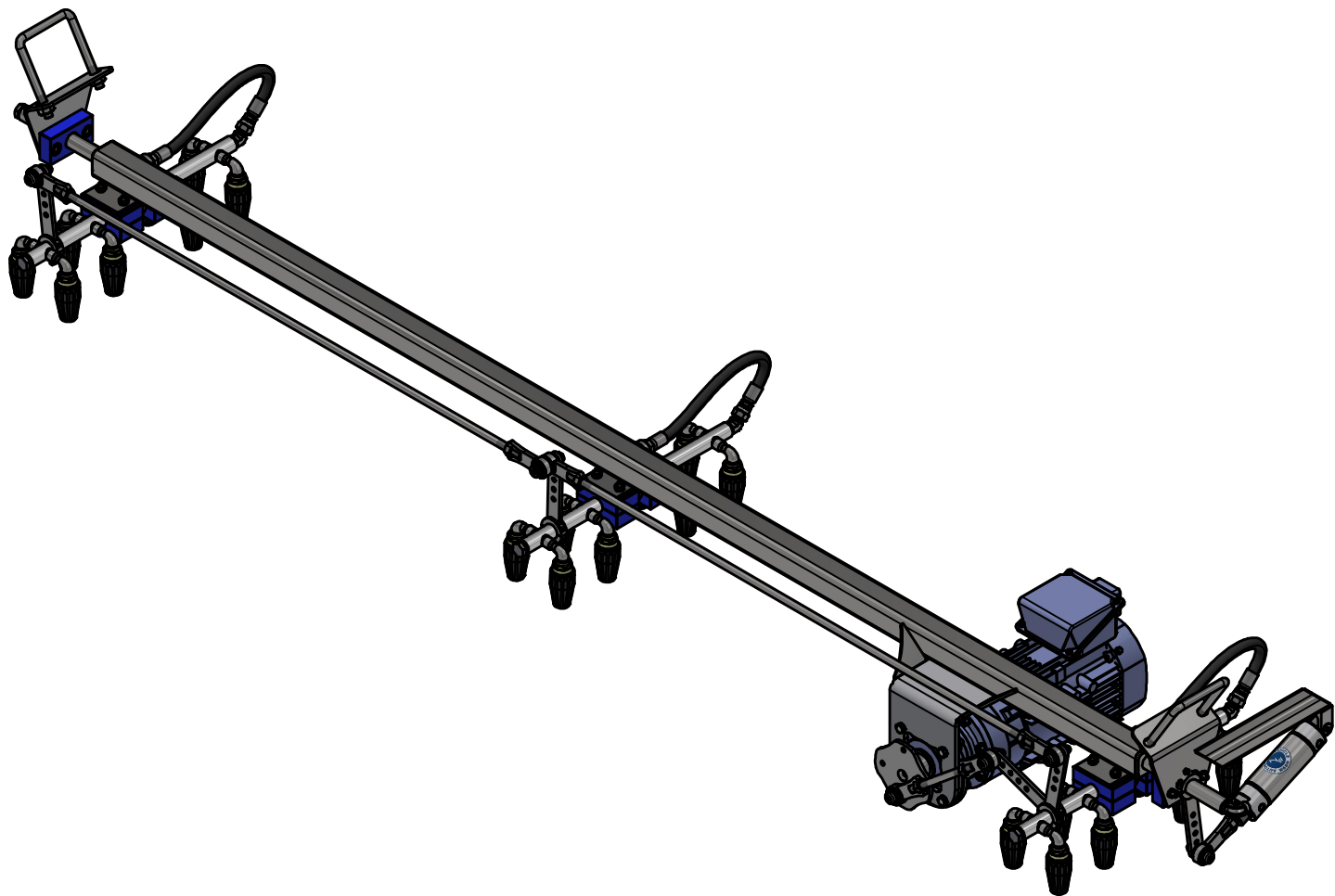


AVW EQUIPMENT CO., INC.
105 S. 9TH AVENUE
MAYWOOD, IL 60153
Tel: 708-343-7738 Fax: 708-343-9065
WWW.AVWEQUIPMENT.COM

- COMPANY PROPRIETARY NOTE -
THIS DRAWING AND ITS DESIGNS ARE PROPERTY OF AVW EQUIPMENT CO. &
IT IS NOT TO BE USED OR REPRODUCED WITHOUT THE PERMISSION FROM AVW CO.

DRAWN BY	Darpan	CUSTOMER: AVW Equipment Co.	
CHECKED BY		PROJECT: Octasquare Pivoting Oscillating High Pressure Arch - Electric	
QTY		DESCRIPTION: Octasquare Pivoting Oscillating High Pressure Arch - Electric	
RELEASE DATE	11/4/2021	PART NUMBER: OT2-PO1-EL	REV# 1
DIMENSION ARE IN INCHES & PROVIDED PRIOR TO SURFACE TREATMENTS, UNLESS NOTED.		SIZE A	EST WEIGHT: SHEET 3 of 46

OT2-PO1A-EL - Octasquare Pivoting Oscillating Top Manifold Assembly - EL

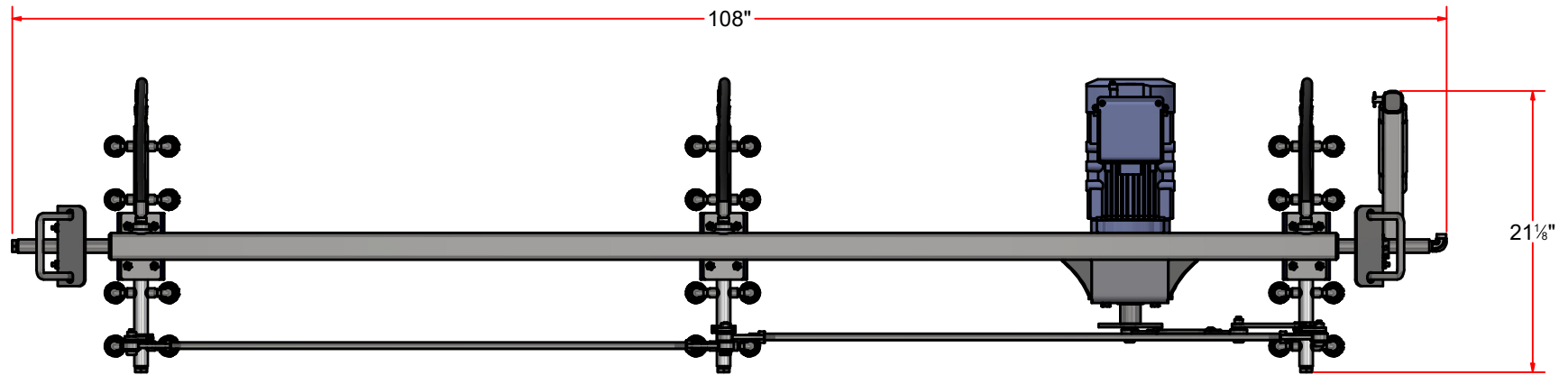


AVW EQUIPMENT CO., INC.
105 S. 9TH AVENUE
MAYWOOD, IL 60153
Tel: 708-343-7738 Fax: 708-343-9065
WWW.AVWEQUIPMENT.COM

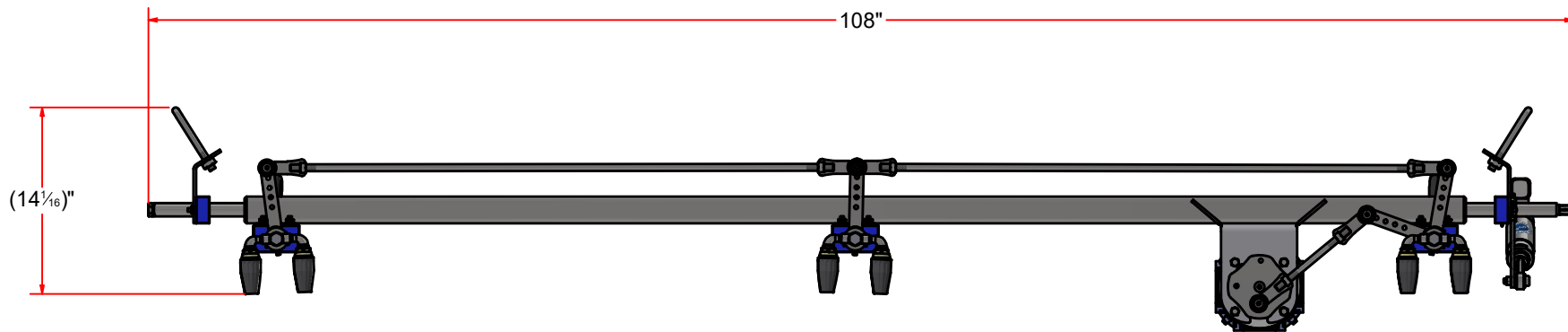
- COMPANY PROPRIETARY NOTE -
THIS DRAWING AND ITS DESIGNS ARE PROPERTY OF AVW EQUIPMENT CO. &
IT IS NOT TO BE USED OR REPRODUCED WITHOUT THE PERMISSION FROM AVW CO.

DRAWN BY	Darpan	CUSTOMER: AVW Equipment Co.	
CHECKED BY		PROJECT: Octasquare Pivoting Oscillating High Pressure Arch - Electric	
QTY		DESCRIPTION: Octasquare Pivoting Oscillating Top Manifold Assembly - EL	
RELEASE DATE	11/4/2021	PART NUMBER: OT2-PO1A-EL	REV# 1
DIMENSION ARE IN INCHES & PROVIDED PRIOR TO SURFACE TREATMENTS, UNLESS NOTED.		SIZE A	EST WEIGHT: SHEET 4 of 46

OT2-PO1A-EL - Octasquare Pivoting Oscillating Top Manifold Assembly - EL



TOP



FRONT



AVW EQUIPMENT CO., INC.
105 S. 9TH AVENUE
MAYWOOD, IL 60153
Tel: 708-343-7738 Fax: 708-343-9065
WWW.AVWEQUIPMENT.COM

- COMPANY PROPRIETARY NOTE -

THIS DRAWING AND ITS DESIGNS ARE PROPERTY OF AVW EQUIPMENT CO. & IT IS NOT TO BE USED OR REPRODUCED WITHOUT THE PERMISSION FROM AVW CO.

DRAWN BY

Darpan

CUSTOMER: AVW Equipment Co.

CHECKED BY

PROJECT: Octasquare Pivoting Oscillating High Pressure Arch - Electric

QTY

DESCRIPTION: Octasquare Pivoting Oscillating Top Manifold Assembly - EL

RELEASE DATE

11/4/2021

PART NUMBER: OT2-PO1A-EL

REV# 1

DIMENSION ARE IN INCHES & PROVIDED PRIOR TO SURFACE TREATMENTS, UNLESS NOTED.

SIZE
A

EST WEIGHT:

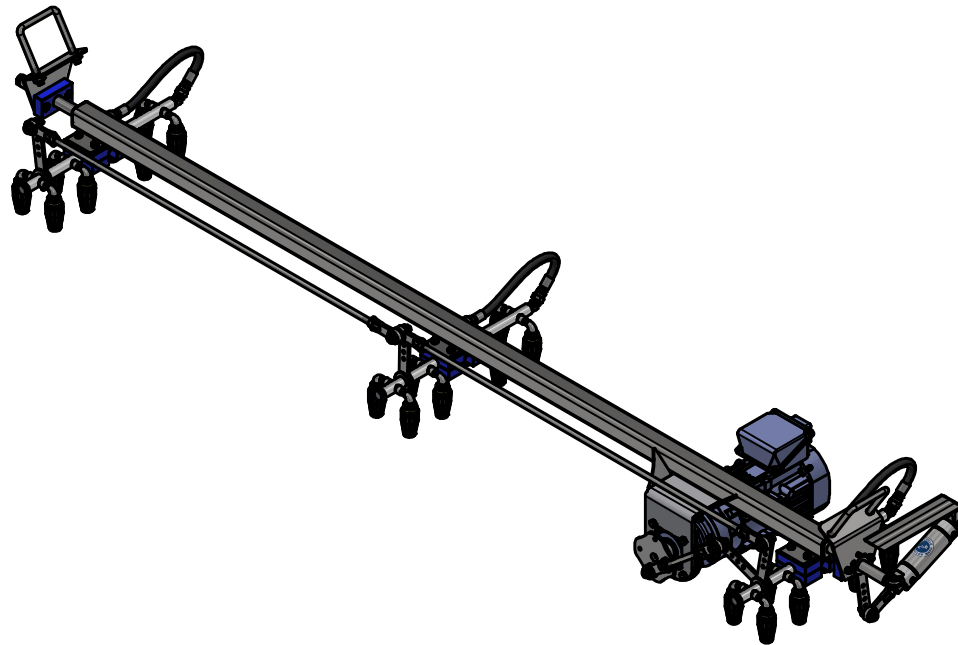
SHEET 5 of 46

PATH:L:\Libraries\Productivity\PO1 Top Manifold\OT2-PO1-EL\OT2-PO1A-EL.iam

OT2-PO1A-EL - Octasquare Pivoting Oscillating Top Manifold Assembly - EL

Parts List		
ITEM	QTY	DESCRIPTION
1	1	Pivoting Top Bar
2	6	UHMW Block - 2 Peice
3	3	SS Split Collar- 1in
4	12	1/4" - 20 x 2.5" UNC Hex Screw
5	12	1/4"-20 18-8ss Heavy Hex Nut
6	16	1/4" N FLAT WASHER
7	1	Elbow 1/2" NPT Male x 1/2" NPT Female
8	1	1/2" NPT Stainless Steel Hex Head Solid Plug
9	3	Manifold Assembly - 18" LG.
10	5	5in Cam Arm w/ 5 Holes
11	5	Shoulder Bolt - 1/2" X 1" LG (3/8" Thread)
12	18	1/2" N Flat Washer
13	2	Oscillating Arm Assembly 41"
14	1	Oscillating Arm Assembly 7"
15	1	Oscillating Disk 1_1/8"
16	1	Air Cylinder 2" x 3"
17	1	Ball Joint End Rod
18	1	Pin 3/8" x 2" LG
19	1	Cotter Pin
20	2	UHMW Block 3-3/4" x 2" x 1"
21	4	1/4"-20 18-8ss Heavy Hex Jam Nut
22	4	Hex Cap Screw - 1/4"-20 X 1-1/2"
23	4	1/2-13 Hex Nut
24	3	1/2" FJIC, 37°-3/8" Hose Crimp
25	3	1/2" 37° MJIC x3/8" Hose Crimp
26	3	Elbow 45 Male 1/2" JICx1/2" NPTF
27	2	Square U Bolt D 1/2" x 4" x 5" LG

Parts List		
ITEM	QTY	DESCRIPTION
28	6	Hex Nut - 3/8"-16
29	1	SS Plate #10Gax 6 1/4" OD
30	1	CNVM1H-6100Y-EP Motor
31	4	3/8" - 16 UNC x 1 1/2" Hex Screw
32	4	3/8"-16 18-8ss Heavy Hex Nut
33	3	Top Manifold Hose 1 (21/32" OD)
34	1	Shoulder Bolt - 1/2" X 1-1/2" LG (3/8" Thread)
35	1	Cylinder Mounting Bracket
36	1	Cylinder Mounting Bracket Assembly



AVW EQUIPMENT CO., INC.
105 S. 9TH AVENUE
MAYWOOD, IL 60153
Tel: 708-343-7738 Fax: 708-343-9065
WWW.AVWEQUIPMENT.COM

- COMPANY PROPRIETARY NOTE -

THIS DRAWING AND ITS DESIGNS ARE PROPERTY OF AVW EQUIPMENT CO. & IT IS NOT TO BE USED OR REPRODUCED WITHOUT THE PERMISSION FROM AVW CO.

DRAWN BY

Darpan

CUSTOMER: AVW Equipment Co.

CHECKED BY

PROJECT: Octasquare Pivoting Oscillating High Pressure Arch - Electric

QTY

DESCRIPTION: Octasquare Pivoting Oscillating Top Manifold Assembly - EL

RELEASE DATE

11/4/2021

PART NUMBER: OT2-PO1A-EL

REV# 1

DIMENSION ARE IN INCHES & PROVIDED PRIOR TO SURFACE TREATMENTS, UNLESS NOTED.

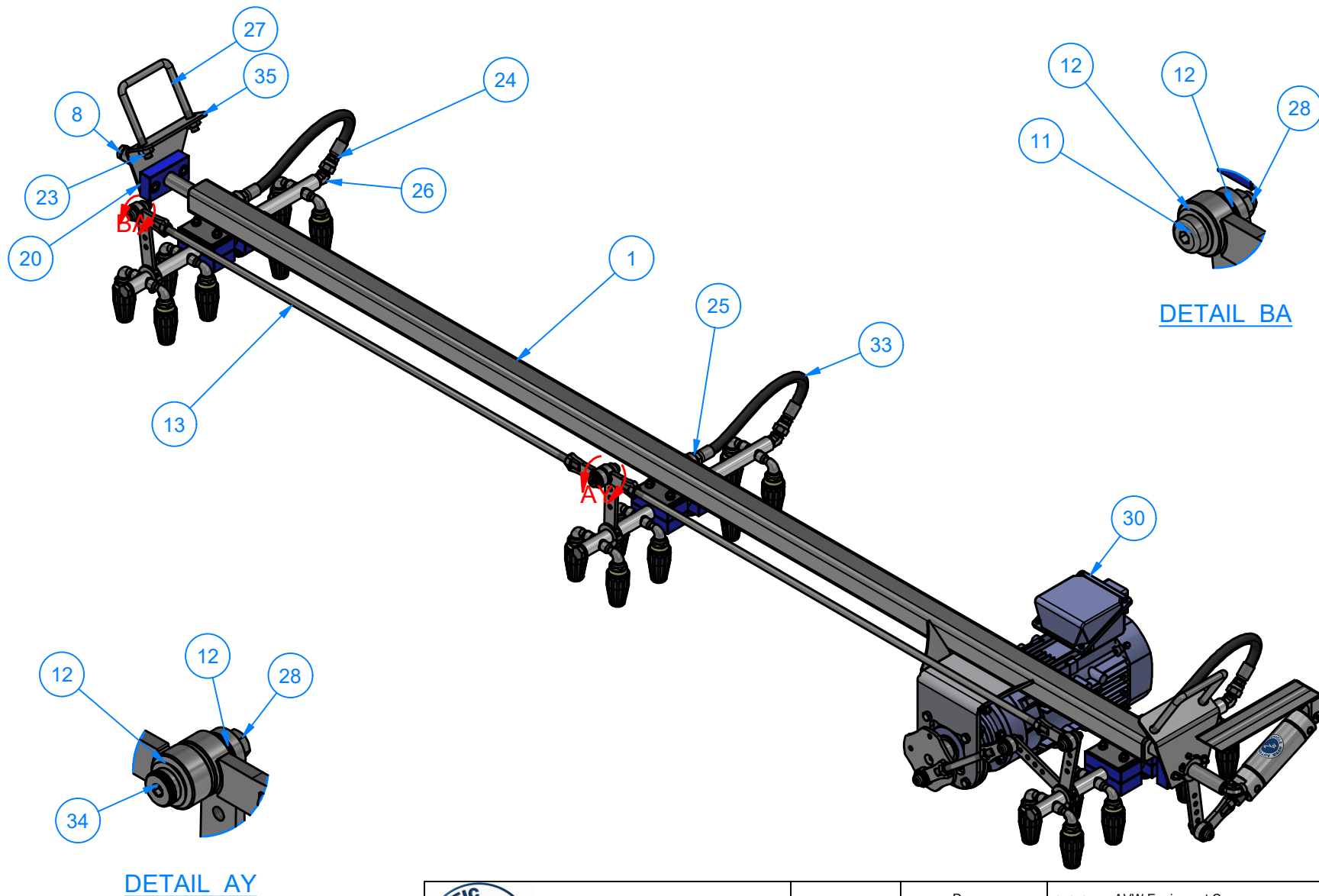
SIZE
A

EST WEIGHT:

SHEET 6 of 46

PATH:L:\Libraries\Productivity\PO1 Top Manifold\OT2-PO1-EL\OT2-PO1A-EL.iam

OT2-PO1A-EL - Octasquare Pivoting Oscillating Top Manifold Assembly - EL



DETAIL AY

DETAIL BA



AVW EQUIPMENT CO., INC.
105 S. 9TH AVENUE
MAYWOOD, IL 60153
Tel: 708-343-7738 Fax: 708-343-9065
WWW.AVWEQUIPMENT.COM

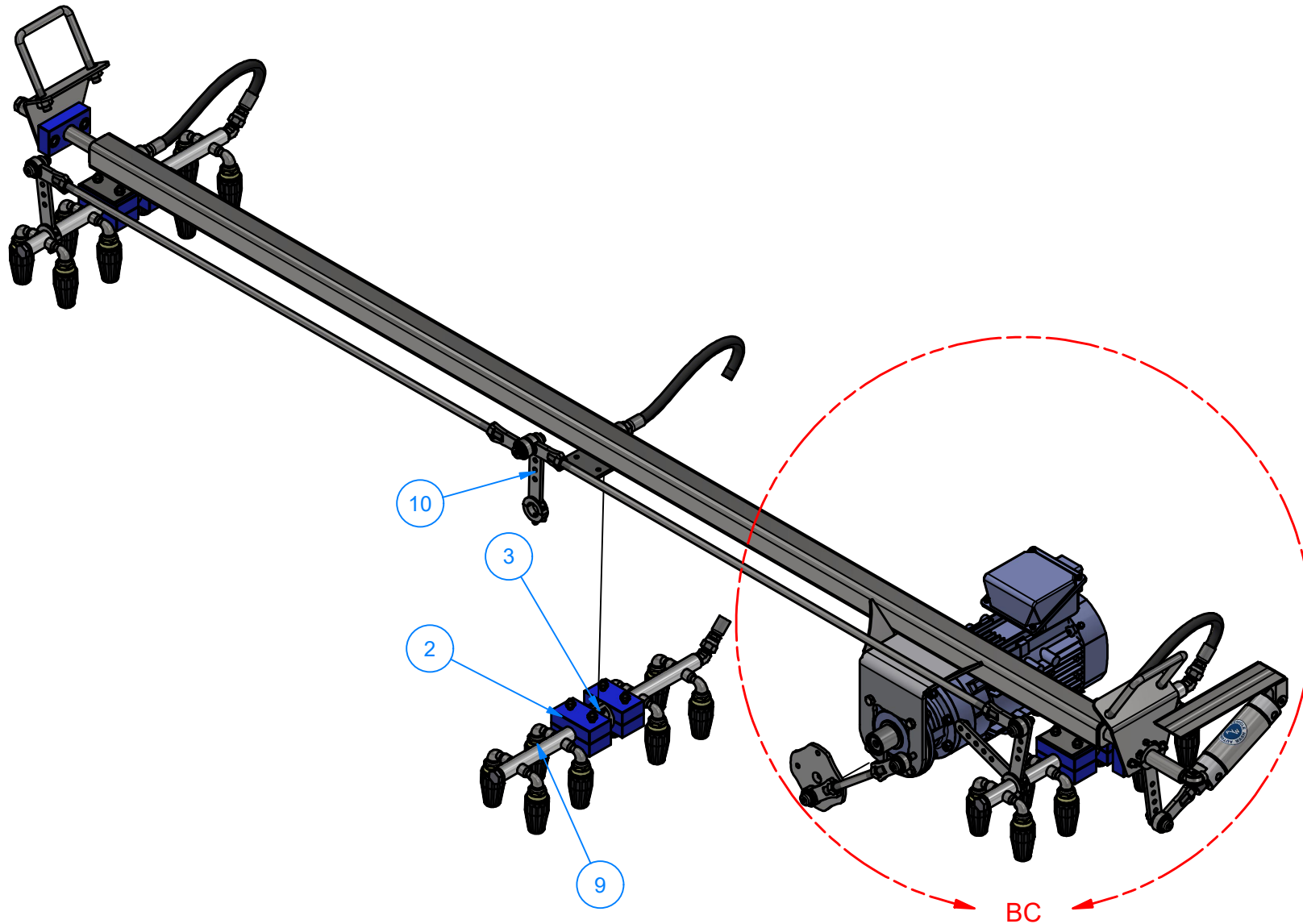
- COMPANY PROPRIETARY NOTE -

THIS DRAWING AND ITS DESIGNS ARE PROPERTY OF AVW EQUIPMENT CO. & IT IS NOT TO BE USED OR REPRODUCED WITHOUT THE PERMISSION FROM AVW CO.

DRAWN BY	Darpan	CUSTOMER: AVW Equipment Co.	
CHECKED BY		PROJECT: Octasquare Pivoting Oscillating High Pressure Arch - Electric	
QTY		DESCRIPTION: Octasquare Pivoting Oscillating Top Manifold Assembly - EL	
RELEASE DATE	11/4/2021	PART NUMBER: OT2-PO1A-EL	REV# 1
DIMENSION ARE IN INCHES & PROVIDED PRIOR TO SURFACE TREATMENTS, UNLESS NOTED.		SIZE A	EST WEIGHT:
			SHEET 7 of 46

PATH:L:\Libraries\Productivity\PO1 Top Manifold\OT2-PO1-EL\OT2-PO1A-EL.iam

OT2-PO1A-EL - Octasquare Pivoting Oscillating Top Manifold Assembly - EL



AVW EQUIPMENT CO., INC.
105 S. 9TH AVENUE
MAYWOOD, IL 60153
Tel: 708-343-7738 Fax: 708-343-9065
WWW.AVWEQUIPMENT.COM

- COMPANY PROPRIETARY NOTE -

THIS DRAWING AND ITS DESIGNS ARE PROPERTY OF AVW EQUIPMENT CO. & IT IS NOT TO BE USED OR REPRODUCED WITHOUT THE PERMISSION FROM AVW CO.

DRAWN BY

Darpan

CUSTOMER: AVW Equipment Co.

CHECKED BY

PROJECT: Octasquare Pivoting Oscillating High Pressure Arch - Electric

QTY

DESCRIPTION: Octasquare Pivoting Oscillating Top Manifold Assembly - EL

RELEASE DATE

11/4/2021

PART NUMBER: OT2-PO1A-EL

REV# 1

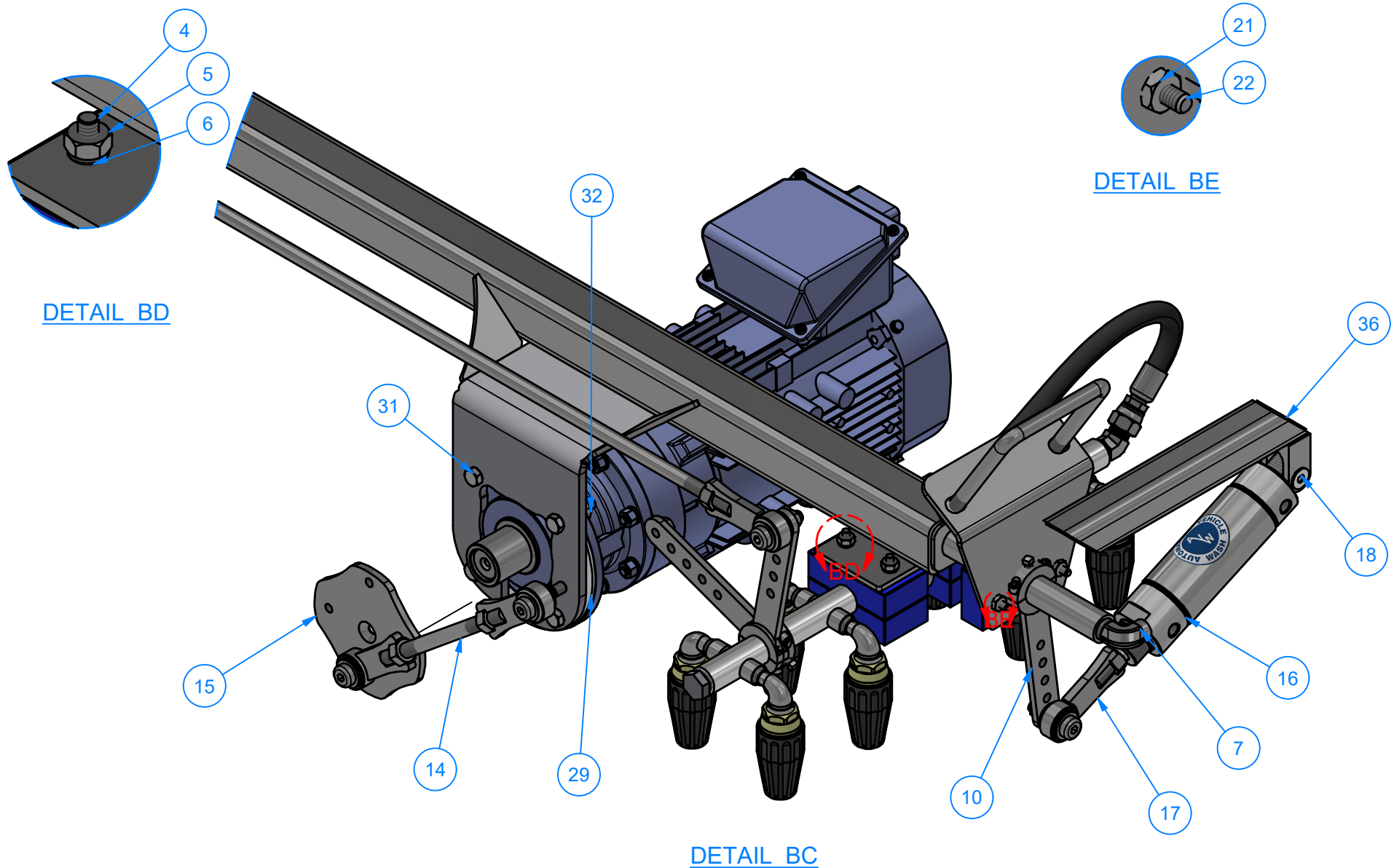
DIMENSION ARE IN INCHES & PROVIDED PRIOR TO SURFACE TREATMENTS, UNLESS NOTED.

SIZE
A

EST WEIGHT:

SHEET 8 of 46

PATH: L:\Libraries\Productivity\PO1 Top Manifold\OT2-PO1-EL\OT2-PO1A-EL.iam



AVW EQUIPMENT CO., INC.
105 S. 9TH AVENUE
MAYWOOD, IL 60153
Tel: 708-343-7738 Fax: 708-343-9065
WWW.AVWEQUIPMENT.COM

- COMPANY PROPRIETARY NOTE -

THIS DRAWING AND ITS DESIGNS ARE PROPERTY OF AVW EQUIPMENT CO. & IT IS NOT TO BE USED OR REPRODUCED WITHOUT THE PERMISSION FROM AVW CO.

DRAWN BY

Darpan

CUSTOMER: AVW Equipment Co.

CHECKED BY

PROJECT: Octasquare Pivoting Oscillating High Pressure Arch - Electric

QTY

DESCRIPTION: Octasquare Pivoting Oscillating Top Manifold Assembly - EL

RELEASE DATE

11/4/2021

PART NUMBER: OT2-PO1A-EL

REV# 1

DIMENSION ARE IN INCHES & PROVIDED PRIOR TO SURFACE TREATMENTS, UNLESS NOTED.

SIZE
A

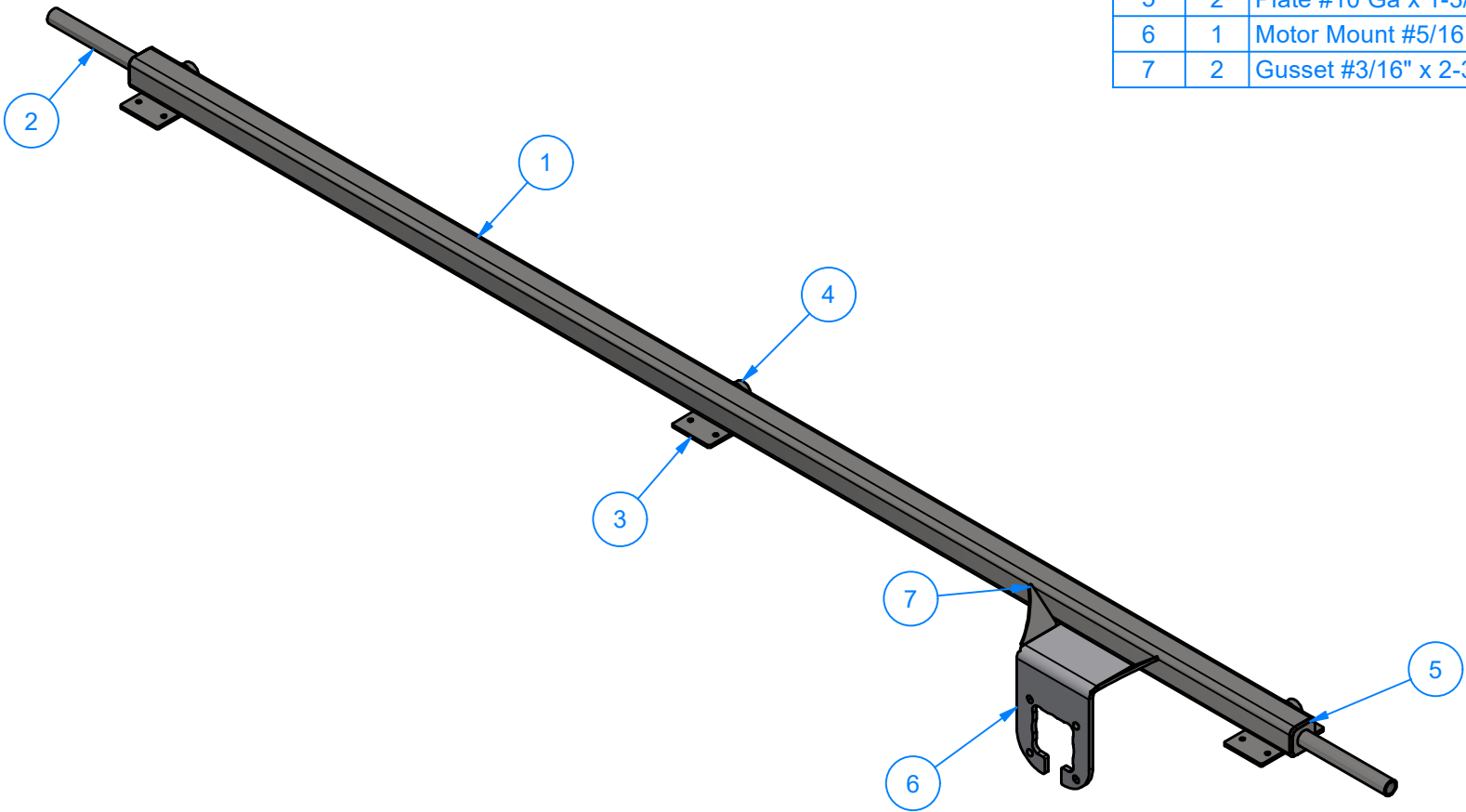
EST WEIGHT:

SHEET 9 of 46

PATH: L:\Libraries\Productivity\PO1 Top Manifold\OT2-PO1-EL\OT2-PO1A-EL.iam

PO1CA-EL - Pivoting Top Bar

Parts List		
ITEM	QTY	DESCRIPTION
1	1	Pivoting Top Bar-2"x2"x92" LG.
2	2	Tubing OD1" X 7" LG
3	3	Plate #3/16" Ga x 3" x 5" LG
4	3	1/2" Half Coupling
5	2	Plate #10 Ga x 1-3/4" x 1-3/4"
6	1	Motor Mount #5/16 X 5 3/4 x 12 1/4
7	2	Gusset #3/16" x 2-3_4x2-3_4

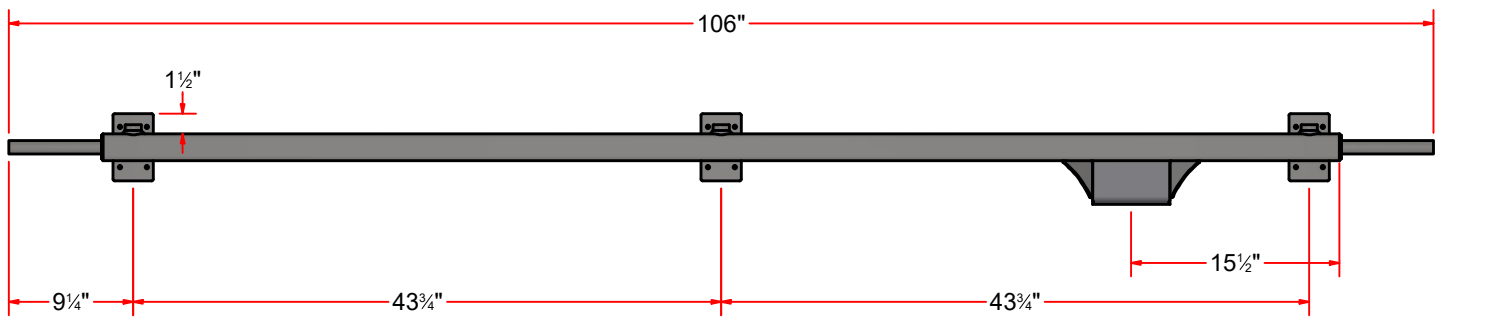


AVW EQUIPMENT CO., INC.
105 S. 9TH AVENUE
MAYWOOD, IL 60153
Tel: 708-343-7738 Fax: 708-343-9065
WWW.AVWEQUIPMENT.COM

- COMPANY PROPRIETARY NOTE -
THIS DRAWING AND ITS DESIGNS ARE PROPERTY OF AVW EQUIPMENT CO. &
IT IS NOT TO BE USED OR REPRODUCED WITHOUT THE PERMISSION FROM AVW CO.

DRAWN BY	Darpan	CUSTOMER: AVW Equipment Co.	
CHECKED BY		PROJECT: Octasquare Pivoting Oscillating High Pressure Arch - Electric	
QTY		DESCRIPTION: Pivoting Top Bar	
RELEASE DATE	11/4/2021	PART NUMBER: PO1CA-EL	REV# 1
DIMENSION ARE IN INCHES & PROVIDED PRIOR TO SURFACE TREATMENTS, UNLESS NOTED.		SIZE A	EST WEIGHT: SHEET 10 of 46

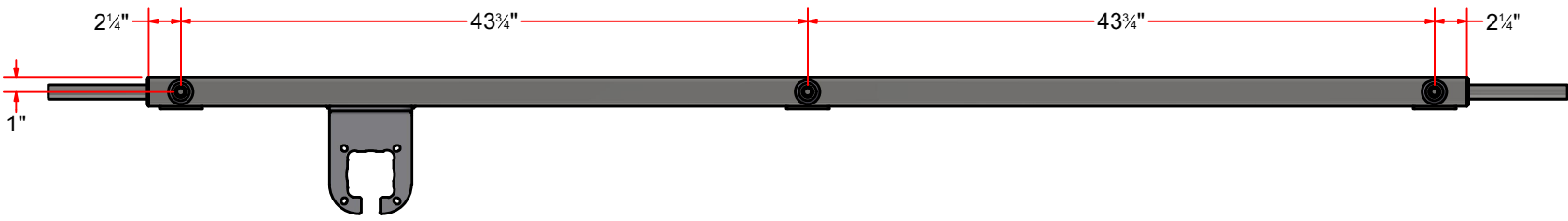
PO1CA-EL - Pivoting Top Bar




TOP



FRONT

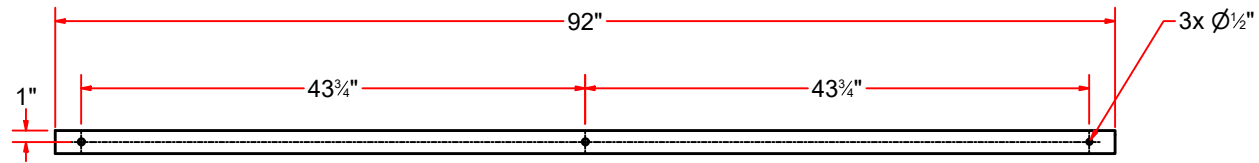


BACK

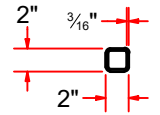
 <div>AVW EQUIPMENT CO., INC. 105 S. 9TH AVENUE MAYWOOD, IL 60153 Tel: 708-343-7738 Fax: 708-343-9065 WWW.AVWEQUIPMENT.COM</div>	DRAWN BY	Darpan	CUSTOMER: AVW Equipment Co.	
	CHECKED BY		PROJECT: Octasquare Pivoting Oscillating High Pressure Arch - Electric	
	QTY		DESCRIPTION: Pivoting Top Bar	
	RELEASE DATE	11/4/2021	PART NUMBER: PO1CA-EL	REV# 1
<div>- COMPANY PROPRIETARY NOTE - THIS DRAWING AND ITS DESIGNS ARE PROPERTY OF AVW EQUIPMENT CO. & IT IS NOT TO BE USED OR REPRODUCED WITHOUT THE PERMISSION FROM AVW CO.</div>		DIMENSION ARE IN INCHES & PROVIDED PRIOR TO SURFACE TREATMENTS, UNLESS NOTED.		
		SIZE A	EST WEIGHT:	SHEET 11 of 46
PATH:L:\Libraries\Productivity\PO1 Top Manifold\Electric\PO1CA-EL.iam				



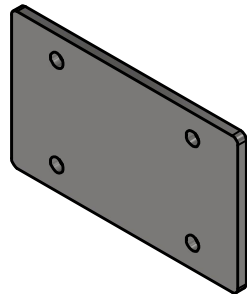
ITEM 1



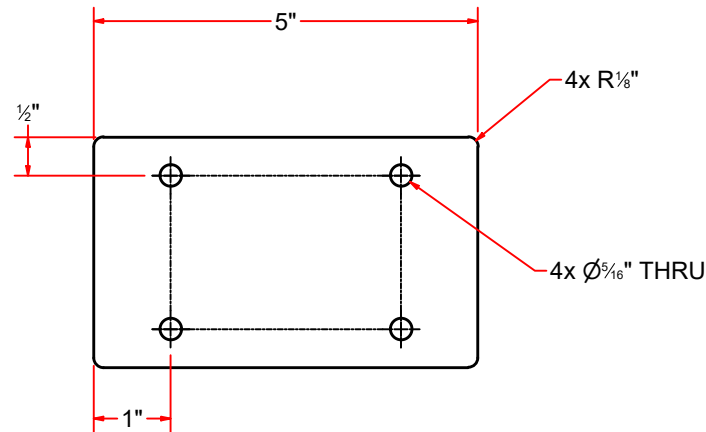
FRONT



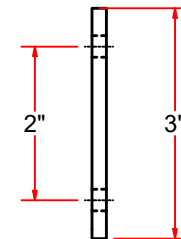
SIDE



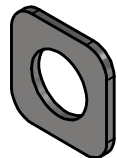
ITEM 3



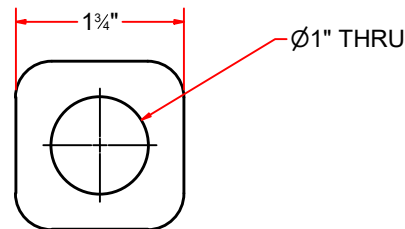
FRONT



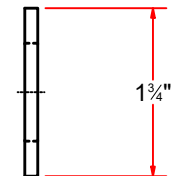
SIDE



ITEM 5



FRONT



SIDE



AVW EQUIPMENT CO., INC.
105 S. 9TH AVENUE
MAYWOOD, IL 60153
Tel: 708-343-7738 Fax: 708-343-9065
WWW.AVWEQUIPMENT.COM

- COMPANY PROPRIETARY NOTE -

THIS DRAWING AND ITS DESIGNS ARE PROPERTY OF AVW EQUIPMENT CO. & IT IS NOT TO BE USED OR REPRODUCED WITHOUT THE PERMISSION FROM AVW CO.

DRAWN BY

Darpan

CUSTOMER: AVW Equipment Co.

CHECKED BY

PROJECT: Octasquare Pivoting Oscillating High Pressure Arch - Electric

QTY

DESCRIPTION: Pivoting Top Bar-2"x2"x92" LG.

RELEASE DATE

11/4/2021

PART NUMBER: PO1CHA

REV# 1

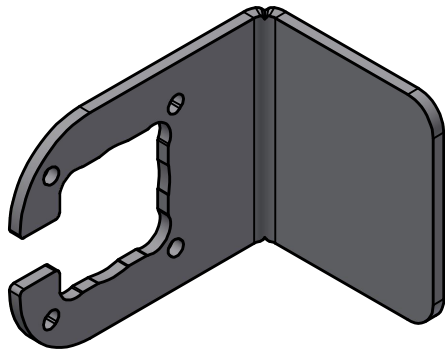
DIMENSION ARE IN INCHES & PROVIDED PRIOR TO SURFACE TREATMENTS, UNLESS NOTED.

SIZE
A

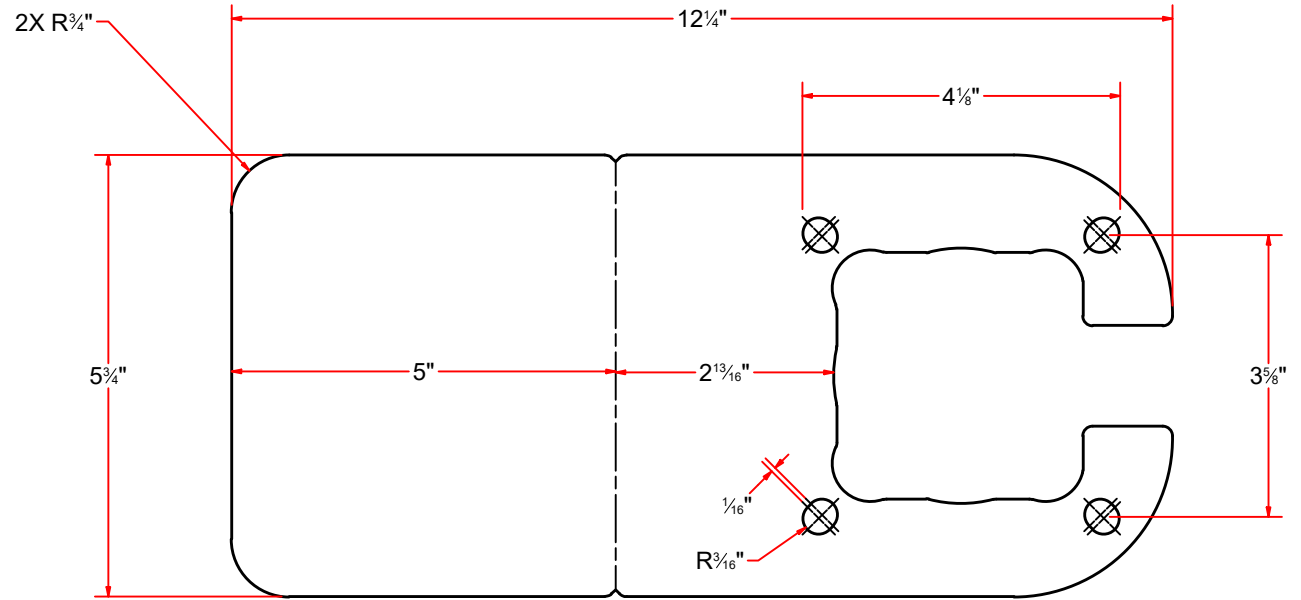
EST WEIGHT:

SHEET 12 of 46

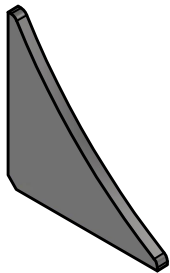
PATH:L:\Libraries\Productivity\PO1 Top Manifold\PO1 Components [Hydraulic and Electric]\Top Manifold\PO1CHA.ipt



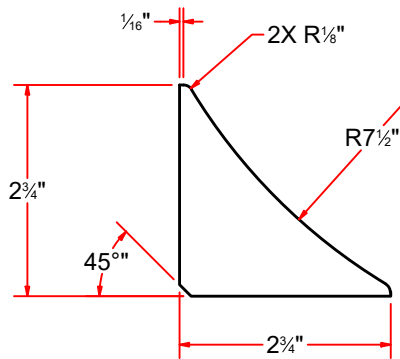
ITEM 6



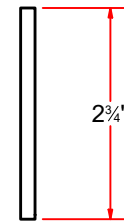
FLAT PATTERN



ITEM 7



FRONT



SIDE



AVW EQUIPMENT CO., INC.
105 S. 9TH AVENUE
MAYWOOD, IL 60153
Tel: 708-343-7738 Fax: 708-343-9065
WWW.AVWEQUIPMENT.COM

- COMPANY PROPRIETARY NOTE -

THIS DRAWING AND ITS DESIGNS ARE PROPERTY OF AVW EQUIPMENT CO. & IT IS NOT TO BE USED OR REPRODUCED WITHOUT THE PERMISSION FROM AVW CO.

DRAWN BY

Darpan

CUSTOMER: AVW Equipment Co.

CHECKED BY

PROJECT: Octasquare Pivoting Oscillating High Pressure Arch - Electric

QTY

DESCRIPTION: Motor Mount #5/16 X 5 3/4 x 12 1/4

RELEASE DATE

11/4/2021

PART NUMBER: PO1MM-EL

REV# 1

DIMENSION ARE IN INCHES & PROVIDED PRIOR TO SURFACE TREATMENTS, UNLESS NOTED.

SIZE
A

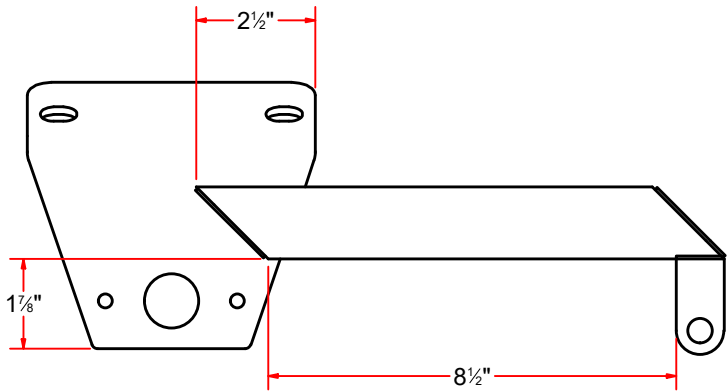
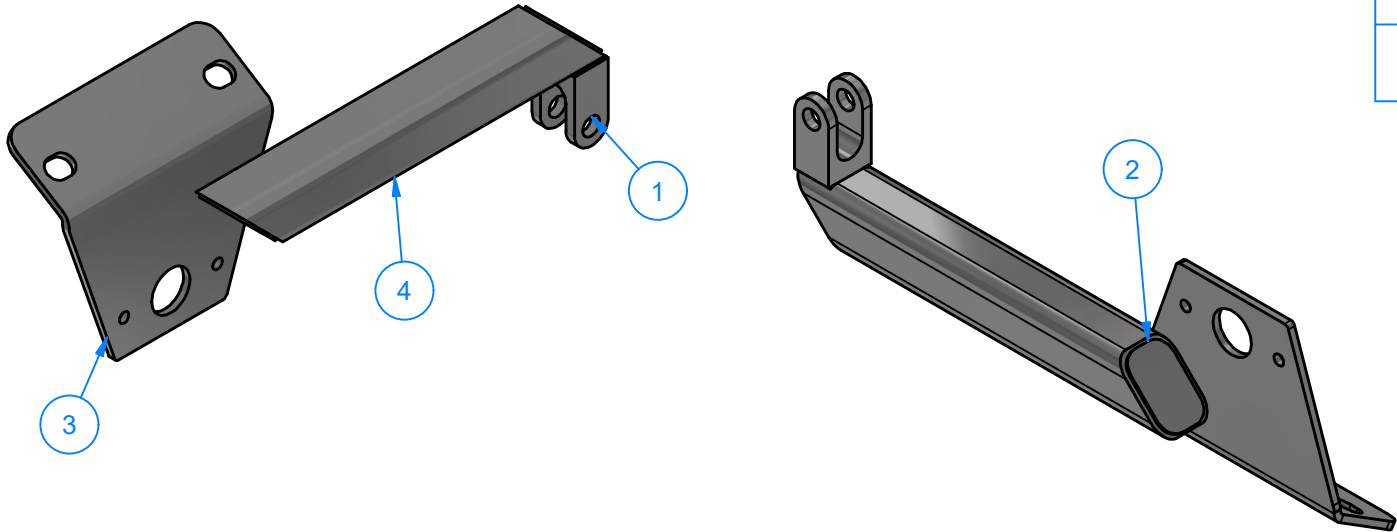
EST WEIGHT:

SHEET 13 of 46

PATH:L:\Libraries\AVW Components\Plates\Motor Mount Plates\Electric Motor Plates\PO1MM-EL.ipt

OT2-PO1AA - Cylinder Mounting Bracket Assembly

Parts List		
ITEM	QTY	DESCRIPTION
1	1	CLEVIS 1/2"
2	2	Plate #3/16 X 1 1/2 X 1 1/2
3	1	Cylinder Mounting Bracket
4	1	Sq. Tubing 1_1/2" x 1_1/2" x 11" LG.



FRONT

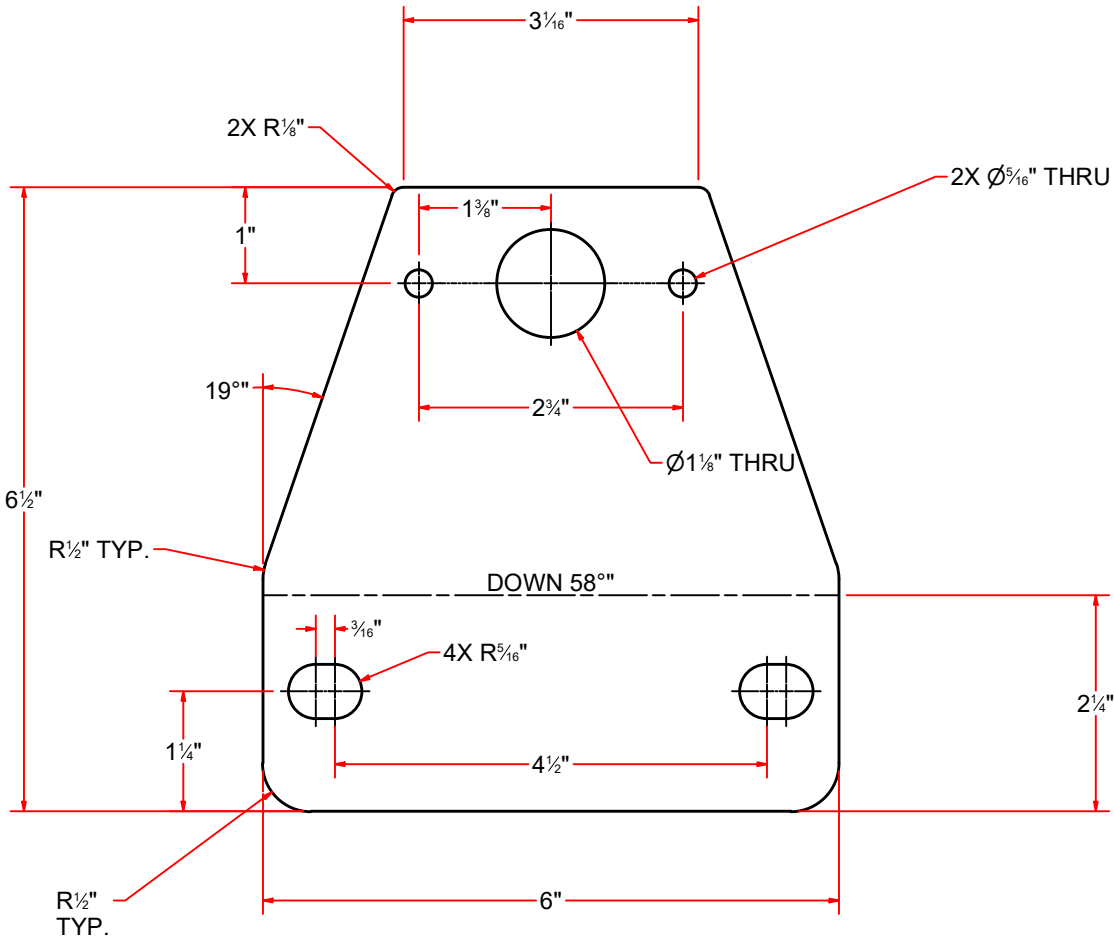
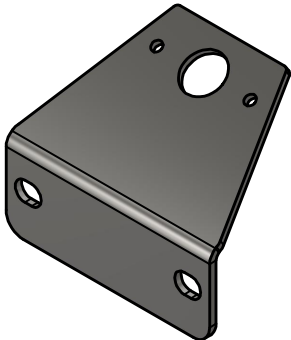


AVW EQUIPMENT CO., INC.
105 S. 9TH AVENUE
MAYWOOD, IL 60153
Tel: 708-343-7738 Fax: 708-343-9065
WWW.AVWEQUIPMENT.COM

- COMPANY PROPRIETARY NOTE -
THIS DRAWING AND ITS DESIGNS ARE PROPERTY OF AVW EQUIPMENT CO. &
IT IS NOT TO BE USED OR REPRODUCED WITHOUT THE PERMISSION FROM AVW CO.

DRAWN BY	Darpan	CUSTOMER: AVW Equipment Co.	
CHECKED BY		PROJECT: Octasquare Pivoting Oscillating High Pressure Arch - Electric	
QTY		DESCRIPTION: Cylinder Mounting Bracket Assembly	
RELEASE DATE	11/4/2021	PART NUMBER: OT2-PO1AA	REV# 1
DIMENSION ARE IN INCHES & PROVIDED PRIOR TO SURFACE TREATMENTS, UNLESS NOTED.		SIZE A	EST WEIGHT: SHEET 14 of 46

OT2-PO1AAA - Cylinder Mounting Bracket



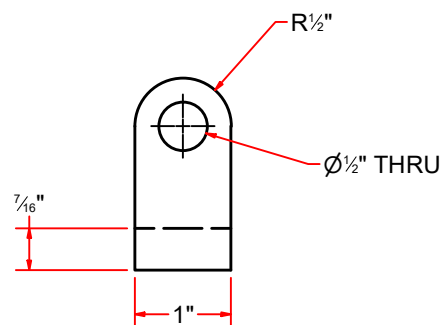
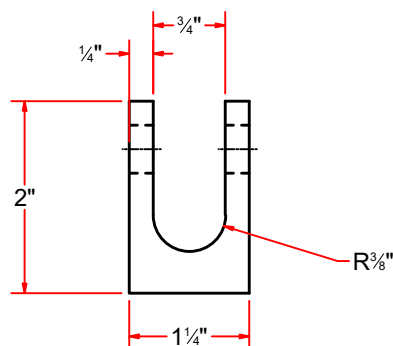
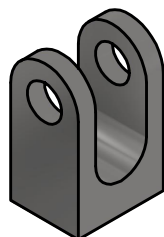
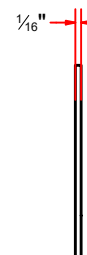
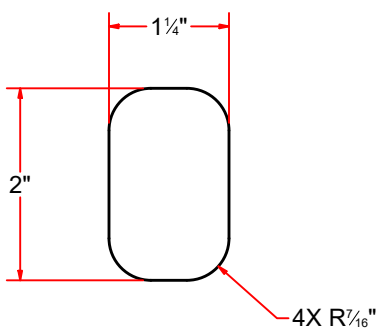
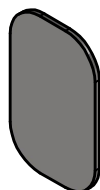
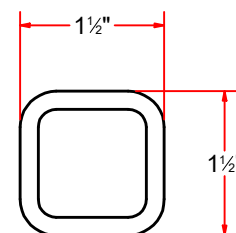
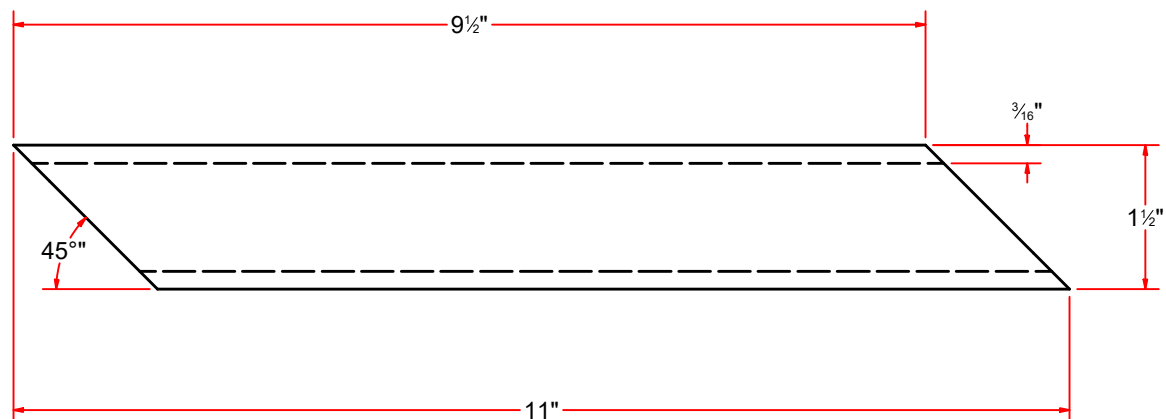
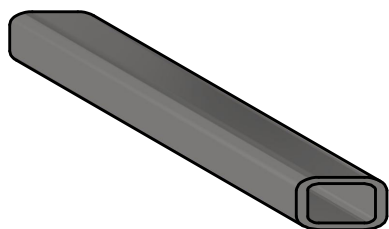
FLAT PATTERN



AVW EQUIPMENT CO., INC.
105 S. 9TH AVENUE
MAYWOOD, IL 60153
Tel: 708-343-7738 Fax: 708-343-9065
WWW.AVWEQUIPMENT.COM

- COMPANY PROPRIETARY NOTE -
THIS DRAWING AND ITS DESIGNS ARE PROPERTY OF AVW EQUIPMENT CO. &
IT IS NOT TO BE USED OR REPRODUCED WITHOUT THE PERMISSION FROM AVW CO.

DRAWN BY	Darpan	CUSTOMER: AVW Equipment Co.	
CHECKED BY		PROJECT: Octasquare Pivoting Oscillating High Pressure Arch - Electric	
QTY		DESCRIPTION: Cylinder Mounting Bracket	
RELEASE DATE	11/4/2021	PART NUMBER: OT2-PO1AAA	REV# 1
DIMENSION ARE IN INCHES & PROVIDED PRIOR TO SURFACE TREATMENTS, UNLESS NOTED.		SIZE A	EST WEIGHT: SHEET 15 of 46



AVW EQUIPMENT CO., INC.
105 S. 9TH AVENUE
MAYWOOD, IL 60153
Tel: 708-343-7738 Fax: 708-343-9065
WWW.AVWEQUIPMENT.COM

- COMPANY PROPRIETARY NOTE -

THIS DRAWING AND ITS DESIGNS ARE PROPERTY OF AVW EQUIPMENT CO. & IT IS NOT TO BE USED OR REPRODUCED WITHOUT THE PERMISSION FROM AVW CO.

DRAWN BY

Darpan

CUSTOMER: AVW Equipment Co.

CHECKED BY

PROJECT: Octasquare Pivoting Oscillating High Pressure Arch - Electric

QTY

DESCRIPTION: Sq. Tubing 1_1/2" x 1_1/2" x 11" LG.

RELEASE DATE

11/4/2021

PART NUMBER: PO1CBD

REV# 1

DIMENSION ARE IN INCHES & PROVIDED PRIOR TO SURFACE TREATMENTS, UNLESS NOTED.

SIZE
A

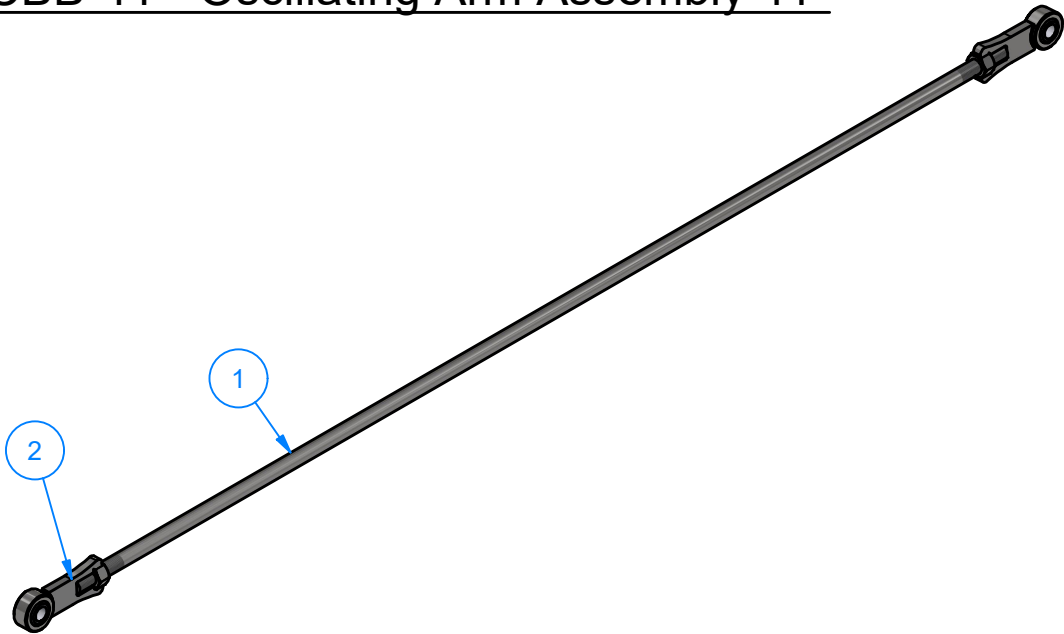
EST WEIGHT:

SHEET 16 of 46

PATH:L:\Libraries\Productivity\PO1 Top Manifold\PO1 Components [Hydraulic and Electric]\Top Manifold\PO1CBD.ipt

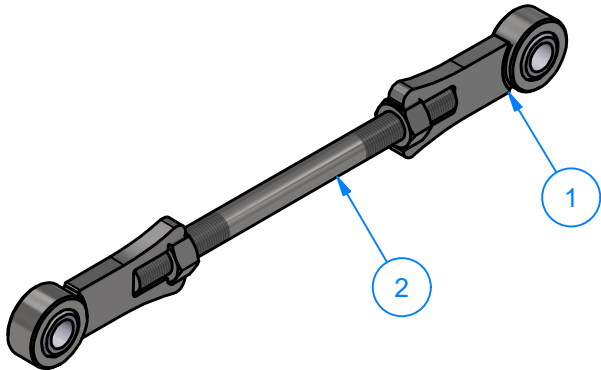
PO1CBB-41 - Oscillating Arm Assembly 41"

Parts List		
ITEM	QTY	DESCRIPTION
1	1	TREADED ROD 1/2" X 41" LG.
2	2	Ball Joint End Rod



PO1CBB-7 - Oscillating Arm Assembly 7"

Parts List		
ITEM	QTY	DESCRIPTION
1	2	Ball Joint End Rod
2	1	Threaded 1/2"D x 7" LG.

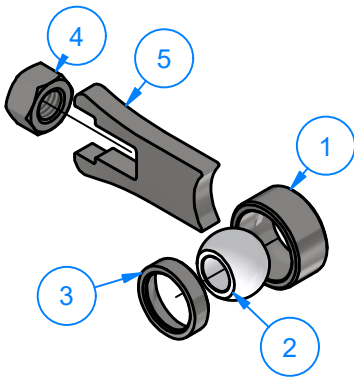
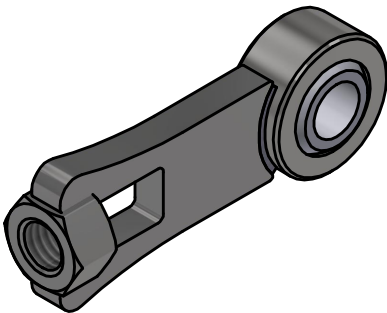


AVW EQUIPMENT CO., INC.
105 S. 9TH AVENUE
MAYWOOD, IL 60153
Tel: 708-343-7738 Fax: 708-343-9065
WWW.AVWEQUIPMENT.COM

- COMPANY PROPRIETARY NOTE -
THIS DRAWING AND ITS DESIGNS ARE PROPERTY OF AVW EQUIPMENT CO. &
IT IS NOT TO BE USED OR REPRODUCED WITHOUT THE PERMISSION FROM AVW CO.

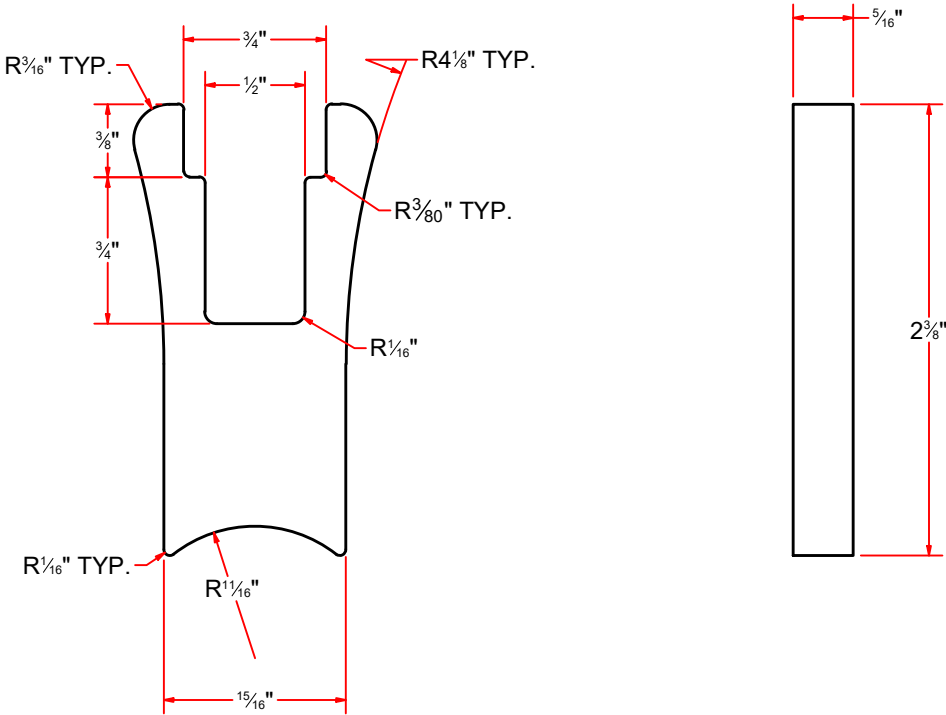
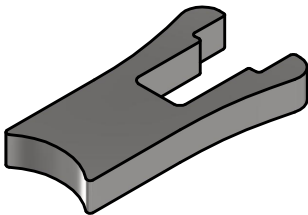
DRAWN BY	Darpan	CUSTOMER: AVW Equipment Co.	
CHECKED BY		PROJECT: Octasquare Pivoting Oscillating High Pressure Arch - Electric	
QTY		DESCRIPTION: Oscillating Arm Assembly 41"	
RELEASE DATE	11/4/2021	PART NUMBER: PO1CBB-41	REV# 1
DIMENSION ARE IN INCHES & PROVIDED PRIOR TO SURFACE TREATMENTS, UNLESS NOTED.		SIZE A	EST WEIGHT: SHEET 17 of 46

BJ1-2-20 - Ball Joint End Rod



Parts List		
ITEM	QTY	DESCRIPTION
1	1	Large Ring OD 1.25" ID 1"
2	1	Nylon Ball Insert 1" OD. x 1/2" ID. x 5/8" LG
3	1	Small Ring OD 1" ID 3/4"
4	1	1/2" - 13 UNC Hex Nut
5	1	Cylinder Lever 5/16"

BJ1-2-20D - Cylinder Lever 5/16"



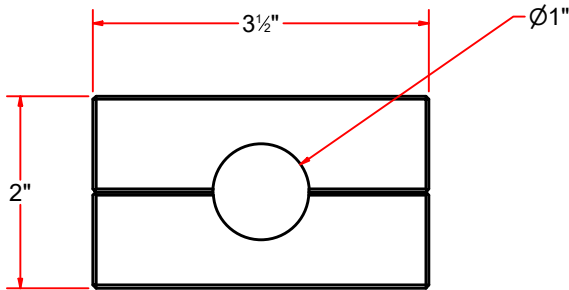
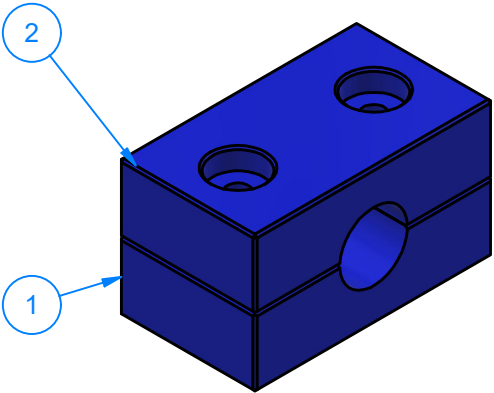
AVW EQUIPMENT CO., INC.
105 S. 9TH AVENUE
MAYWOOD, IL 60153
Tel: 708-343-7738 Fax: 708-343-9065
WWW.AVWEQUIPMENT.COM

- COMPANY PROPRIETARY NOTE -
THIS DRAWING AND ITS DESIGNS ARE PROPERTY OF AVW EQUIPMENT CO. &
IT IS NOT TO BE USED OR REPRODUCED WITHOUT THE PERMISSION FROM AVW CO.

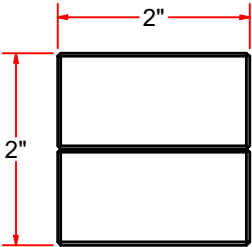
DRAWN BY	Darpan	CUSTOMER: AVW Equipment Co.	
CHECKED BY		PROJECT: Octasquare Pivoting Oscillating High Pressure Arch - Electric	
QTY		DESCRIPTION: Ball Joint End Rod	
RELEASE DATE	11/4/2021	PART NUMBER: BJ1-2-20	REV# 1
DIMENSION ARE IN INCHES & PROVIDED PRIOR TO SURFACE TREATMENTS, UNLESS NOTED.		SIZE A	EST WEIGHT: SHEET 18 of 46

PO1C2-S - UHMW Block - 2 Peice

Parts List		
ITEM	QTY	DESCRIPTION
1	1	1" UHMW Block Bottom
2	1	1" UHMW Block Top

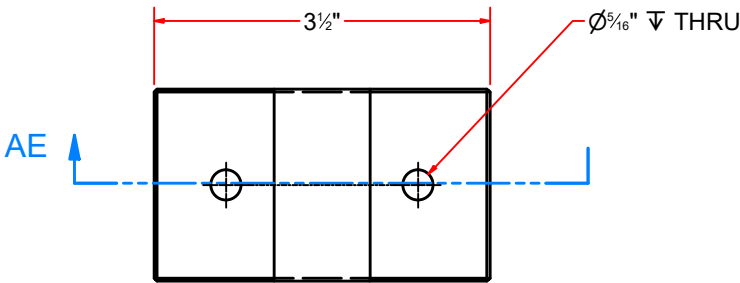
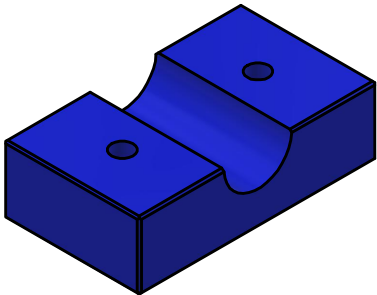


FRONT

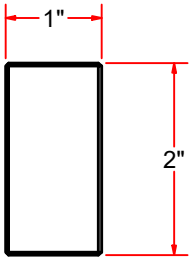


SIDE

PA1AFB - 1" UHMW Block Bottom

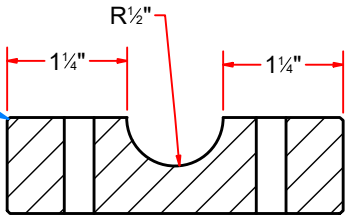


TOP



SIDE

1/32 X 45° Chamfer"
(All Sharp Edges)



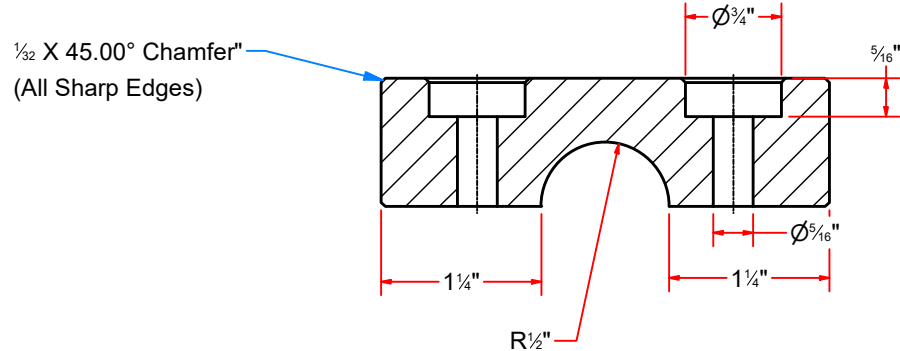
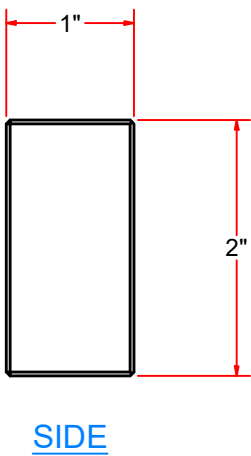
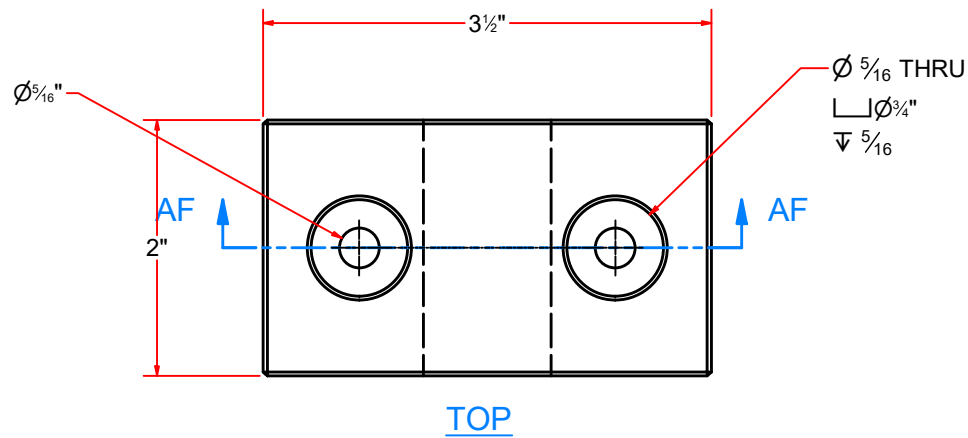
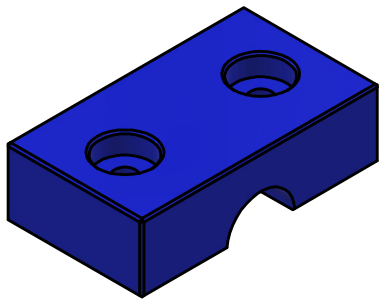
AVW EQUIPMENT CO., INC.
105 S. 9TH AVENUE
MAYWOOD, IL 60153
Tel: 708-343-7738 Fax: 708-343-9065
WWW.AVWEQUIPMENT.COM

SECTION AE-AE

- COMPANY PROPRIETARY NOTE -
THIS DRAWING AND ITS DESIGNS ARE PROPERTY OF AVW EQUIPMENT CO. &
IT IS NOT TO BE USED OR REPRODUCED WITHOUT THE PERMISSION FROM AVW CO.

DRAWN BY	Darpan	CUSTOMER: AVW Equipment Co.	
CHECKED BY		PROJECT: Octasquare Pivoting Oscillating High Pressure Arch - Electric	
QTY		DESCRIPTION: UHMW Block - 2 Peice	
RELEASE DATE	11/4/2021	PART NUMBER: PO1C2-S	REV# 1
DIMENSION ARE IN INCHES & PROVIDED PRIOR TO SURFACE TREATMENTS, UNLESS NOTED.		SIZE A	EST WEIGHT: SHEET 19 of 46

PA1AFA - 1" UHMW Block Top



SECTION AF-AF

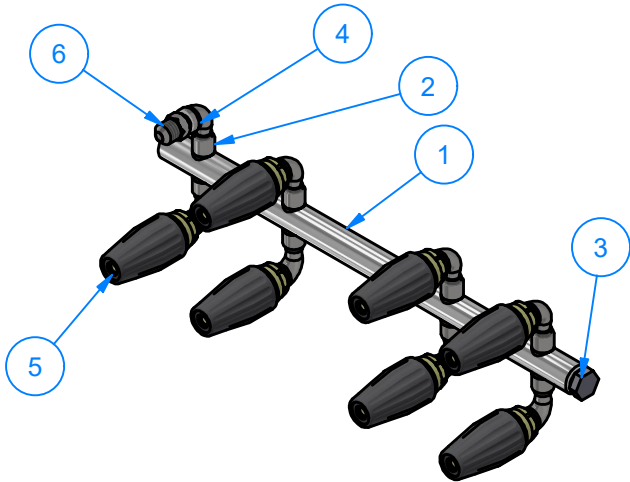


AVW EQUIPMENT CO., INC.
105 S. 9TH AVENUE
MAYWOOD, IL 60153
Tel: 708-343-7738 Fax: 708-343-9065
WWW.AVWEQUIPMENT.COM

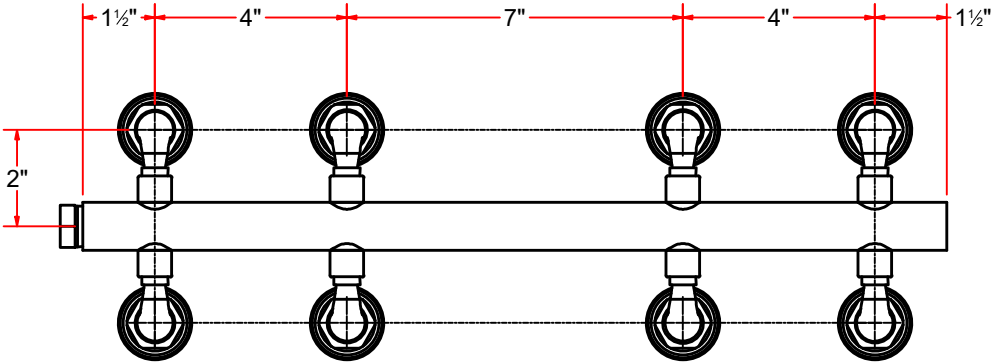
- COMPANY PROPRIETARY NOTE -
THIS DRAWING AND ITS DESIGNS ARE PROPERTY OF AVW EQUIPMENT CO. &
IT IS NOT TO BE USED OR REPRODUCED WITHOUT THE PERMISSION FROM AVW CO.

DRAWN BY	Darpan	CUSTOMER: AVW Equipment Co.	
CHECKED BY		PROJECT: Octasquare Pivoting Oscillating High Pressure Arch - Electric	
QTY		DESCRIPTION: 1" UHMW Block Top	
RELEASE DATE	11/4/2021	PART NUMBER: PA1AFA	REV# 1
DIMENSION ARE IN INCHES & PROVIDED PRIOR TO SURFACE TREATMENTS, UNLESS NOTED.		SIZE A	EST WEIGHT: SHEET 20 of 46

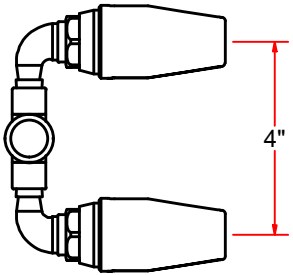
P01DM - Manifold Assembly - 18" LG.



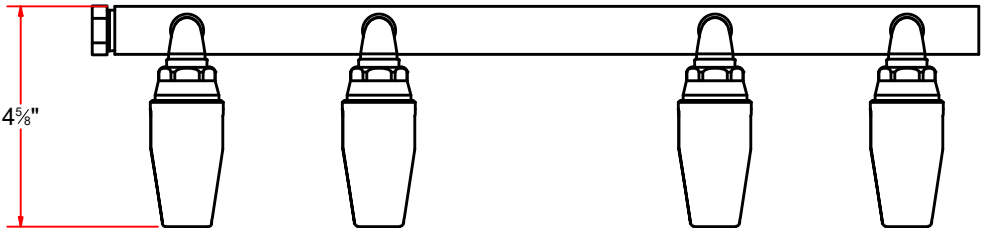
Parts List		
ITEM	QTY	DESCRIPTION
1	1	1" Tubing #.120" Wall x 18" LG.
2	8	1/4" Half Coupling
3	1	Hex Head Plug 1/2 in
4	8	1/4" NPT 90° Street Elbow
5	8	High Pressure Spray Turbo Nozzle
6	8	Reducer 1/2" NPT Male to 1/4" NPT Male



TOP



SIDE



FRONT

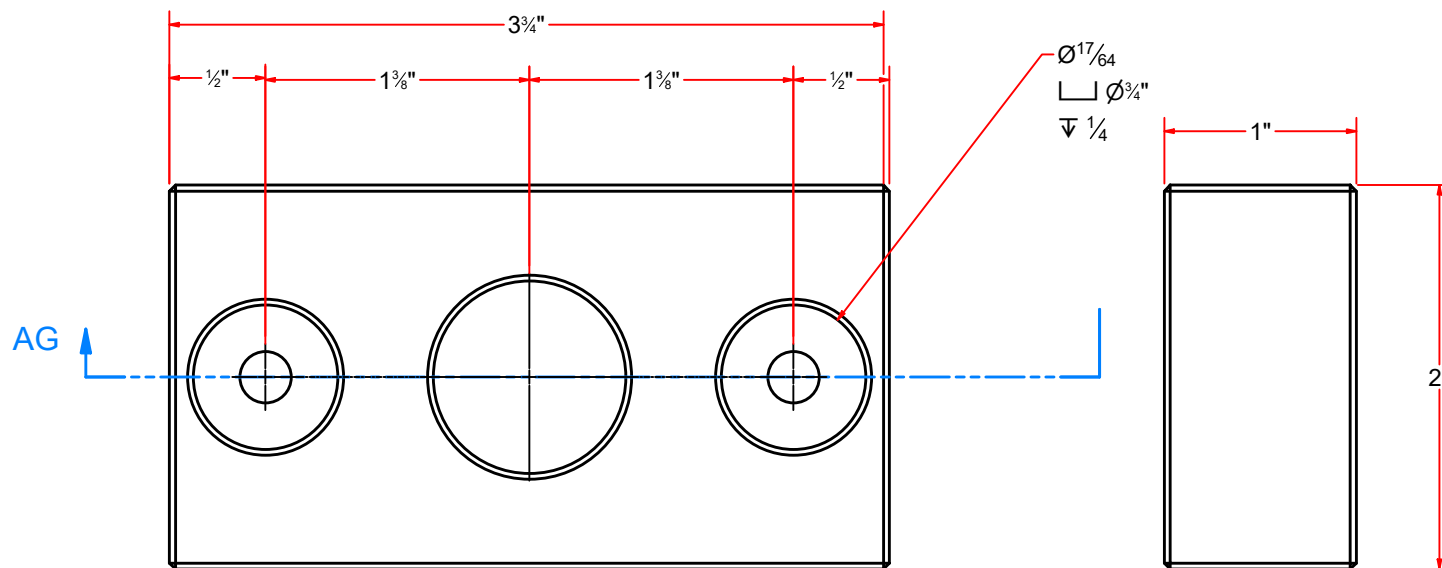
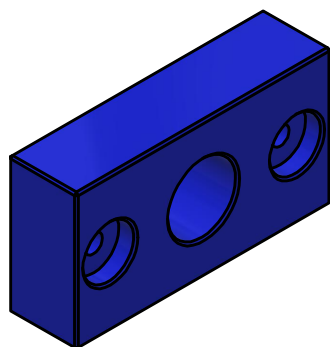


AVW EQUIPMENT CO., INC.
105 S. 9TH AVENUE
MAYWOOD, IL 60153
Tel: 708-343-7738 Fax: 708-343-9065
WWW.AVWEQUIPMENT.COM

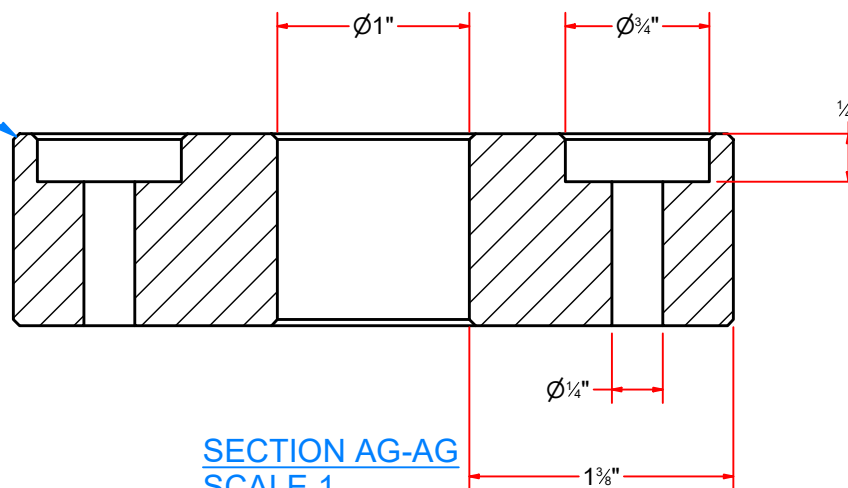
- COMPANY PROPRIETARY NOTE -
THIS DRAWING AND ITS DESIGNS ARE PROPERTY OF AVW EQUIPMENT CO. &
IT IS NOT TO BE USED OR REPRODUCED WITHOUT THE PERMISSION FROM AVW CO.

DRAWN BY	Darpan	CUSTOMER: AVW Equipment Co.	
CHECKED BY		PROJECT: Octasquare Pivoting Oscillating High Pressure Arch - Electric	
QTY		DESCRIPTION: Manifold Assembly - 18" LG.	
RELEASE DATE	11/4/2021	PART NUMBER: P01DM	REV# 1
DIMENSION ARE IN INCHES & PROVIDED PRIOR TO SURFACE TREATMENTS, UNLESS NOTED.		SIZE A	EST WEIGHT: SHEET 21 of 46

P01C1 - UHMW Block 3-3/4" x 2" x 1"



1/32 X 45° Chamfer"



SECTION AG-AG
SCALE 1



AVW EQUIPMENT CO., INC.
105 S. 9TH AVENUE
MAYWOOD, IL 60153
Tel: 708-343-7738 Fax: 708-343-9065
WWW.AVWEQUIPMENT.COM

- COMPANY PROPRIETARY NOTE -

THIS DRAWING AND ITS DESIGNS ARE PROPERTY OF AVW EQUIPMENT CO. & IT IS NOT TO BE USED OR REPRODUCED WITHOUT THE PERMISSION FROM AVW CO.

PATH:L:\Libraries\AVW Components\UHNW Blocks\1in UHMW BracketB.ipt

DRAWN BY

Darpan

CUSTOMER: AVW Equipment Co.

CHECKED BY

PROJECT: Octasquare Pivoting Oscillating High Pressure Arch - Electric

QTY

DESCRIPTION: UHMW Block 3-3/4" x 2" x 1"

RELEASE DATE

11/4/2021

PART NUMBER: P01C1

REV# 1

DIMENSION ARE IN INCHES & PROVIDED PRIOR TO SURFACE TREATMENTS, UNLESS NOTED.

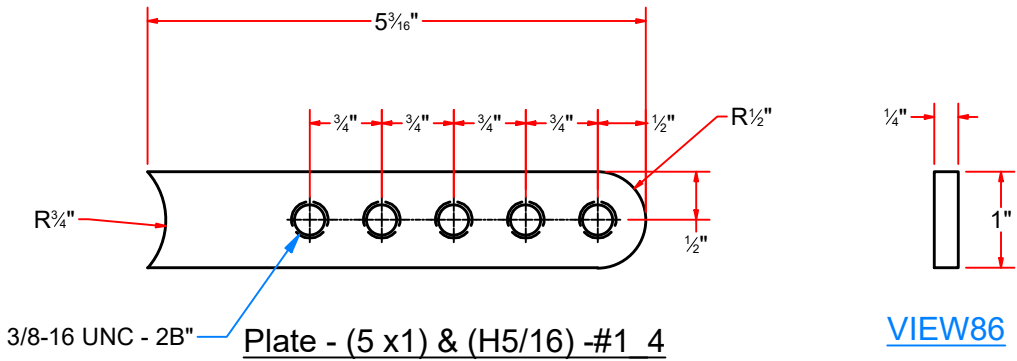
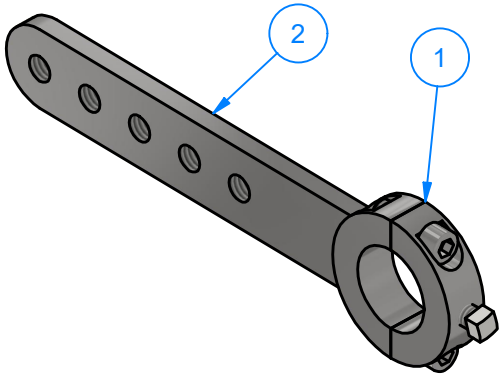
SIZE
A

EST WEIGHT:

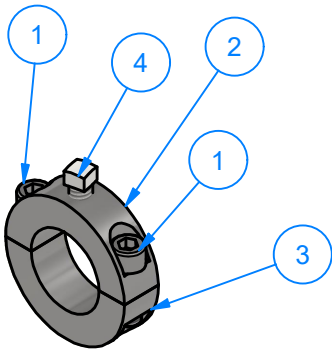
SHEET 22 of 46

PO1-CAM2 - 5in Cam Arm w/ 5 Holes

Parts List		
ITEM	QTY	DESCRIPTION
1	1	Split Collar 1" ID X 1/2"
2	1	Plate - (5 x1) & (H5/16) -#1_4



VIEW86



Split Collar 1" ID X 1/2"

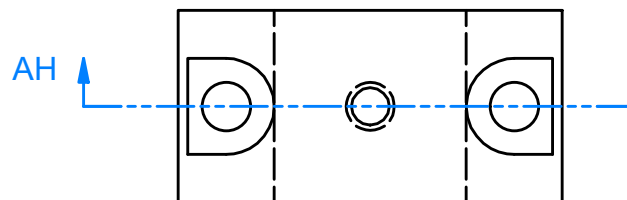
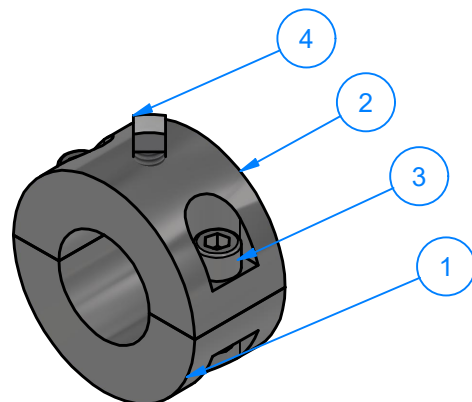
Parts List		
ITEM	QTY	DESCRIPTION
1	2	1/4"-20 x 3/4" L SS Socket Head Cap Screw
2	1	1 3/4" OD Steel Split Collar Top
3	1	1 3/4" OD Steel Split Collar Bottom
4	1	Square Head Screw - 1/4"-20 x 3/4" L SS



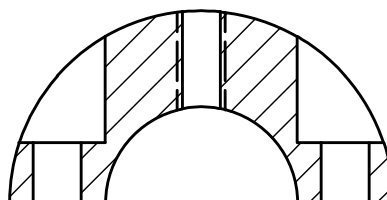
AVW EQUIPMENT CO., INC.
105 S. 9TH AVENUE
MAYWOOD, IL 60153
Tel: 708-343-7738 Fax: 708-343-9065
WWW.AVWEQUIPMENT.COM

DRAWN BY	Darpan	CUSTOMER: AVW Equipment Co.	
CHECKED BY		PROJECT: Octasquare Pivoting Oscillating High Pressure Arch - Electric	
QTY		DESCRIPTION: 5in Cam Arm w/ 5 Holes	
RELEASE DATE	11/4/2021	PART NUMBER: PO1-CAM2	REV# 1
DIMENSION ARE IN INCHES & PROVIDED PRIOR TO SURFACE TREATMENTS, UNLESS NOTED.		SIZE A	EST WEIGHT: SHEET 23 of 46

PO1C3 - SS Split Collar- 1in



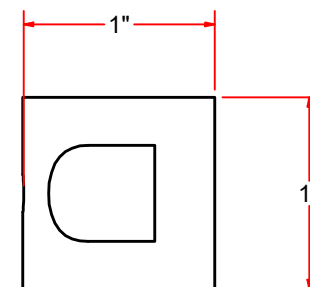
TOP



SECTION AH-AH

Parts List

ITEM	QTY	DESCRIPTION
1	1	1" ID Split Collar (Bottom Piece)
2	1	1" ID Split Collar (Top Piece)
3	2	1/4"-20 x 3/4" L SS Socket Head Cap Screw
4	1	Square Head Screw - 1/4"-20 x 3/4" L SS



VIEW89



AVW EQUIPMENT CO., INC.
105 S. 9TH AVENUE
MAYWOOD, IL 60153
Tel: 708-343-7738 Fax: 708-343-9065
WWW.AVWEQUIPMENT.COM

- COMPANY PROPRIETARY NOTE -

THIS DRAWING AND ITS DESIGNS ARE PROPERTY OF AVW EQUIPMENT CO. & IT IS NOT TO BE USED OR REPRODUCED WITHOUT THE PERMISSION FROM AVW CO.

DRAWN BY

Darpan

CUSTOMER: AVW Equipment Co.

CHECKED BY

PROJECT: Octasquare Pivoting Oscillating High Pressure Arch - Electric

QTY

DESCRIPTION: SS Split Collar- 1in

RELEASE DATE

11/4/2021

PART NUMBER: PO1C3

REV# 1

DIMENSION ARE IN INCHES & PROVIDED PRIOR TO SURFACE TREATMENTS, UNLESS NOTED.

SIZE
A

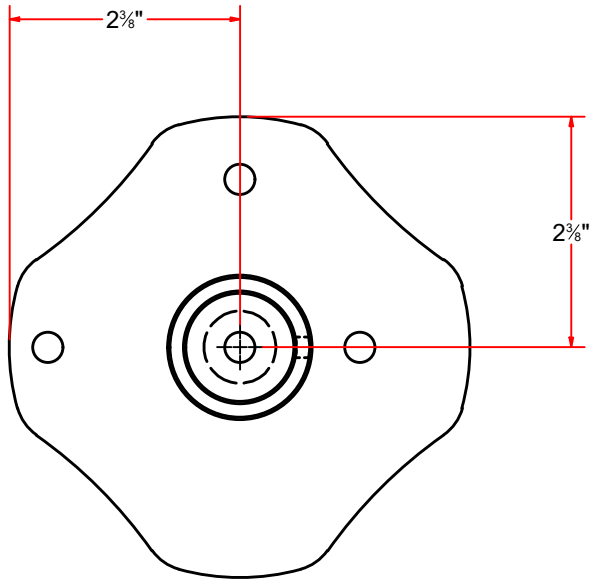
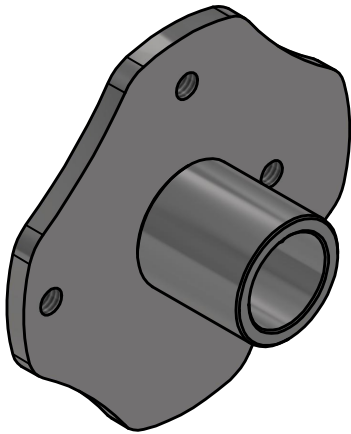
EST WEIGHT:

SHEET 24 of 46

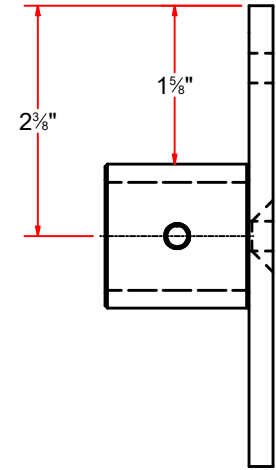
PATH:L:\Libraries\AVW Components\Collars\Split Collars\1 in Split Collar\SC-1 - Split Collar 1in\SC-1 - Split Collar 1in.iam

SB2ABDA-EL - Oscillating Disk 1 1/8"

Parts List		
ITEM	QTY	DESCRIPTION
1	1	One Piece Collar 1" I.D. x 1 1/2" O.D.
2	1	Oscilating Disk - 5/16" Hole



TOP



SIDE

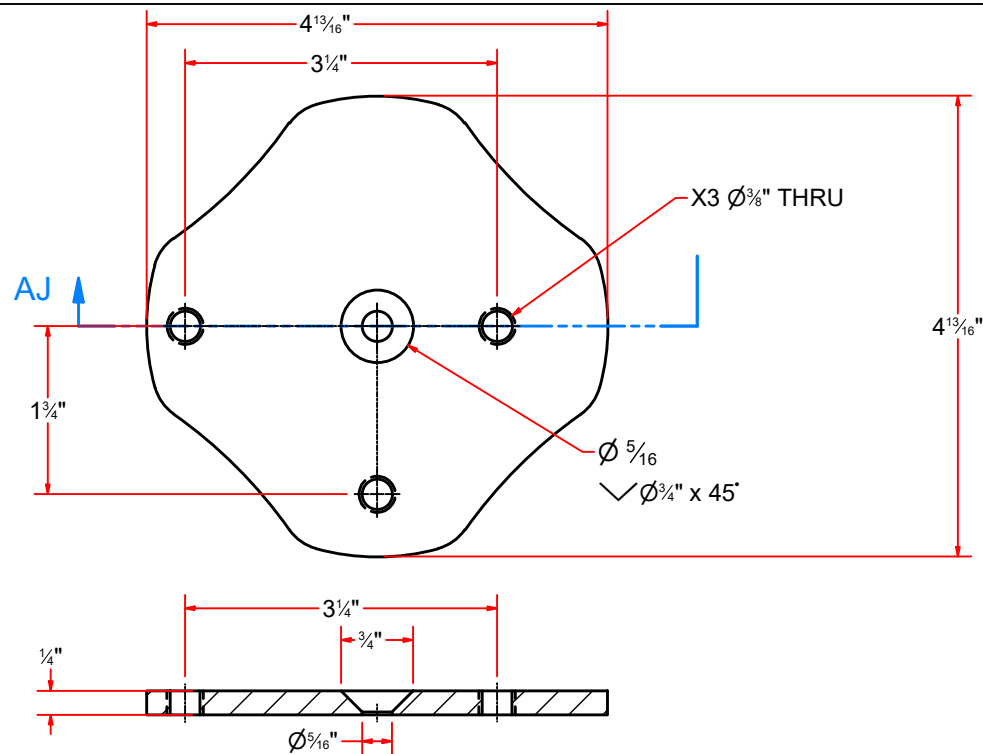
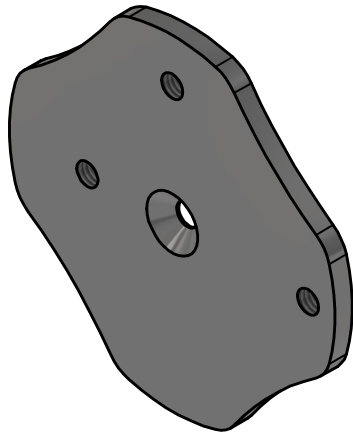


AVW EQUIPMENT CO., INC.
105 S. 9TH AVENUE
MAYWOOD, IL 60153
Tel: 708-343-7738 Fax: 708-343-9065
WWW.AVWEQUIPMENT.COM

- COMPANY PROPRIETARY NOTE -
THIS DRAWING AND ITS DESIGNS ARE PROPERTY OF AVW EQUIPMENT CO. &
IT IS NOT TO BE USED OR REPRODUCED WITHOUT THE PERMISSION FROM AVW CO.

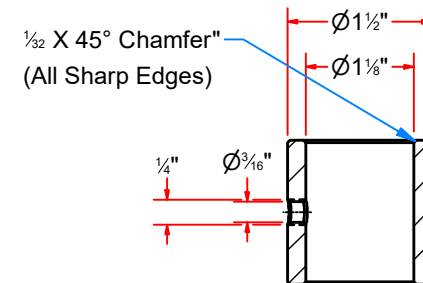
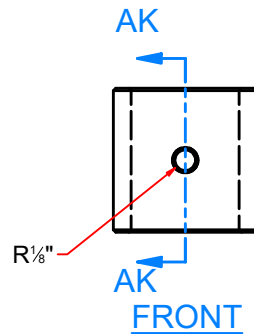
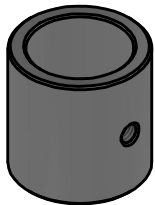
DRAWN BY	Darpan	CUSTOMER: AVW Equipment Co.	
CHECKED BY		PROJECT: Octasquare Pivoting Oscillating High Pressure Arch - Electric	
QTY		DESCRIPTION: Oscillating Disk 1_1/8"	
RELEASE DATE	11/4/2021	PART NUMBER: SB2ABDA-EL	REV# 1
DIMENSION ARE IN INCHES & PROVIDED PRIOR TO SURFACE TREATMENTS, UNLESS NOTED.		SIZE A	EST WEIGHT: SHEET 25 of 46

OSCD003 - Oscilating Disk - 5/16" Hole



SECTION AJ-AJ

One Piece Collar 1" I.D. x 1 1/2" O.D.



SECTION AK-AK



AVW EQUIPMENT CO., INC.
105 S. 9TH AVENUE
MAYWOOD, IL 60153
Tel: 708-343-7738 Fax: 708-343-9065
WWW.AVWEQUIPMENT.COM

- COMPANY PROPRIETARY NOTE -

THIS DRAWING AND ITS DESIGNS ARE PROPERTY OF AVW EQUIPMENT CO. & IT IS NOT TO BE USED OR REPRODUCED WITHOUT THE PERMISSION FROM AVW CO.

DRAWN BY

Darpan

CUSTOMER: AVW Equipment Co.

CHECKED BY

PROJECT: Octasquare Pivoting Oscillating High Pressure Arch - Electric

QTY

DESCRIPTION: Oscilating Disk - 5/16" Hole

RELEASE DATE

11/4/2021

PART NUMBER: OSCD003

REV# 1

DIMENSION ARE IN INCHES & PROVIDED PRIOR TO SURFACE TREATMENTS, UNLESS NOTED.

SIZE A

EST WEIGHT:

SHEET 26 of 46



AVW EQUIPMENT CO., INC.
105 S. 9TH AVENUE
MAYWOOD, IL 60153
Tel: 708-343-7738 Fax: 708-343-9065
WWW.AVWEQUIPMENT.COM

DRAWN BY

Darpan

CUSTOMER: AVW Equipment Co.

CHECKED BY

PROJECT: Octasquare Pivoting Oscillating High Pressure Arch - Electric

QTY

DESCRIPTION:

- COMPANY PROPRIETARY NOTE -

THIS DRAWING AND ITS DESIGNS ARE PROPERTY OF AVW EQUIPMENT CO. &
IT IS NOT TO BE USED OR REPRODUCED WITHOUT THE PERMISSION FROM AVW CO.

RELEASE
DATE

11/4/2021

PART NUMBER:

REV# 1

DIMENSION ARE IN INCHES & PROVIDED PRIOR
TO SURFACE TREATMENTS, UNLESS NOTED.

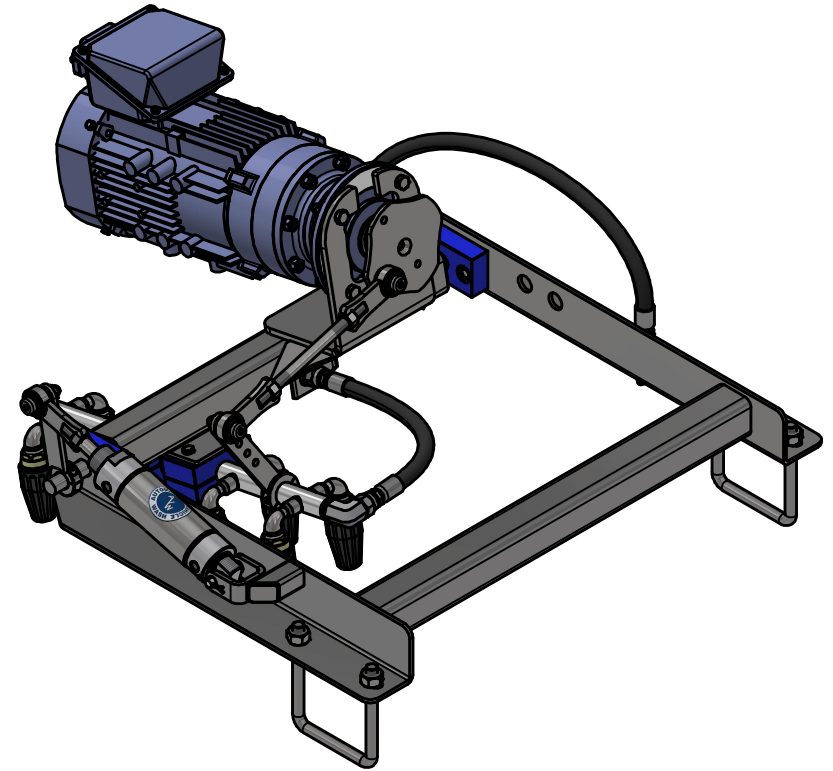
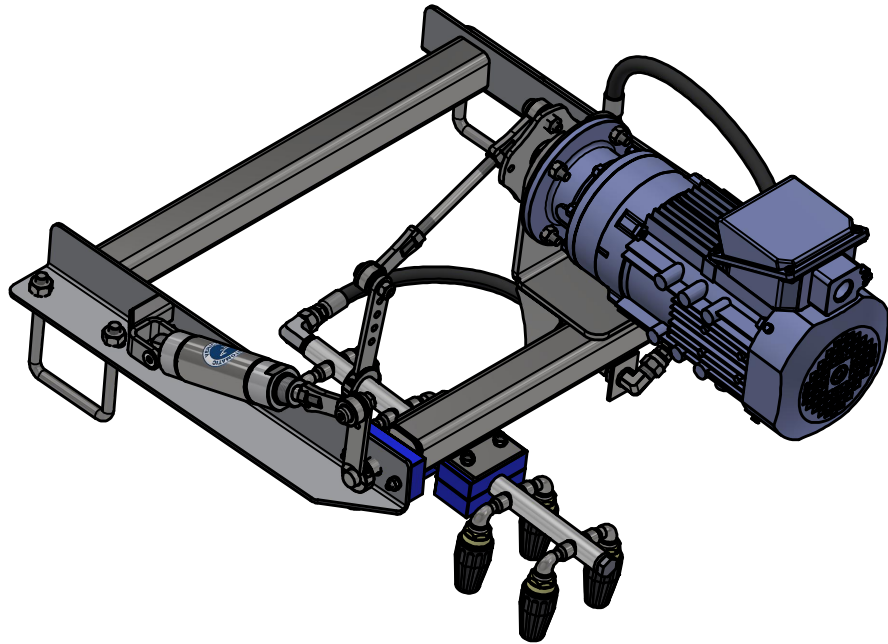
SIZE
A

EST WEIGHT:

SHEET 27 of 46

PATH:

PO1D-EL - Pivoting Oscillating Side Manifold - Driver - EL



AVW EQUIPMENT CO., INC.
105 S. 9TH AVENUE
MAYWOOD, IL 60153
Tel: 708-343-7738 Fax: 708-343-9065
WWW.AVWEQUIPMENT.COM

- COMPANY PROPRIETARY NOTE -

THIS DRAWING AND ITS DESIGNS ARE PROPERTY OF AVW EQUIPMENT CO. &
IT IS NOT TO BE USED OR REPRODUCED WITHOUT THE PERMISSION FROM AVW CO.

DRAWN BY

Darpan

CUSTOMER: AVW Equipment Co.

CHECKED BY

PROJECT: Octasquare Pivoting Oscillating High Pressure Arch - Electric

QTY

DESCRIPTION: Pivoting Oscillating Side Manifold - Driver - EL

RELEASE
DATE

11/4/2021

PART NUMBER: PO1D-EL

REV# 1

DIMENSION ARE IN INCHES & PROVIDED PRIOR
TO SURFACE TREATMENTS, UNLESS NOTED.

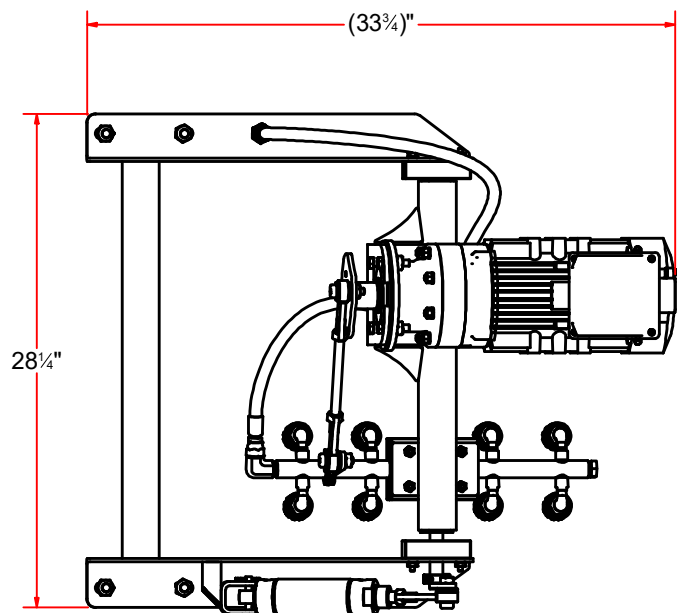
SIZE
A

EST WEIGHT:

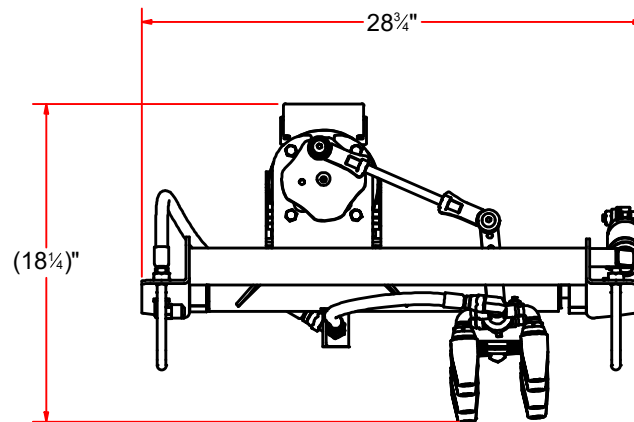
SHEET 28 of 46

PATH: L:\Libraries\Productivity\PO1 Side Manifolds\Electric\Driver Side\PO1D-EL - Pivoting Oscillating Side (Driver Side).iam

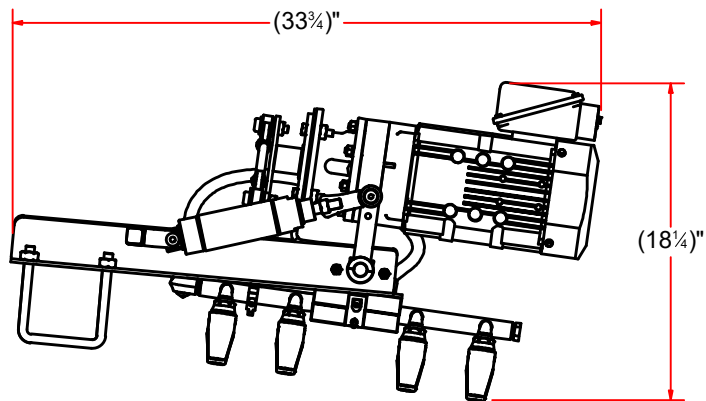
PO1D-EL - Pivoting Oscillating Side Manifold - Driver - EL



TOP



FRONT



SIDE



AVW EQUIPMENT CO., INC.
105 S. 9TH AVENUE
MAYWOOD, IL 60153
Tel: 708-343-7738 Fax: 708-343-9065
WWW.AVWEQUIPMENT.COM

- COMPANY PROPRIETARY NOTE -

THIS DRAWING AND ITS DESIGNS ARE PROPERTY OF AVW EQUIPMENT CO. & IT IS NOT TO BE USED OR REPRODUCED WITHOUT THE PERMISSION FROM AVW CO.

DRAWN BY

Darpan

CUSTOMER: AVW Equipment Co.

CHECKED BY

PROJECT: Octasquare Pivoting Oscillating High Pressure Arch - Electric

QTY

DESCRIPTION: Pivoting Oscillating Side Manifold - Driver - EL

RELEASE DATE

11/4/2021

PART NUMBER: PO1D-EL

REV# 1

DIMENSION ARE IN INCHES & PROVIDED PRIOR TO SURFACE TREATMENTS, UNLESS NOTED.

SIZE
A

EST WEIGHT:

SHEET 29 of 46

PO1D-EL - Pivoting Oscillating Side Manifold - Driver - EL

Parts List		
ITEM	QTY	DESCRIPTION
1	1	Manifold Frame - Driver
2	1	Pivoting Bar w/ Motor Mount - Driver (Electric)
3	3	Shoulder Bolt - 1/2" X 1" LG (3/8" Thread)
4	4	Hex Cap Screw - 1/4"-20 X 1-1/2"
5	8	1/4" N FLAT WASHER
6	2	UHMW Block - 2 Peice
7	4	1/4" - 20 x 2.5" UNC Hex Screw
8	1	Manifold Assembly - 18" LG.
9	3	1/2" Flat Washer
10	2	UHMW Block 3-3/4" x 2" x 1"
11	8	1/4"-20 Hex Nut
12	1	SS Split Collar- 1in
13	1	Pin 3/8" x 2" LG
14	1	Cotter Pin
15	1	5in Cam Arm w/ 5 Holes
16	1	4in Cam Arm

Parts List		
ITEM	QTY	DESCRIPTION
17	4	1/2" FJIC, 37°-3/8" Hose Crimp
18	1	CNVM1H-6100Y-EP Motor
19	1	SS Plate #10Gax 6 1/4" OD
20	1	Air Cylinder 2" x 3"
21	1	Ball Joint End Rod
22	5	1/2" N Flat Washer
23	1	Oscillating Arm Assembly 7"
24	1	Oscillating Disk 1_1/8"
25	4	3/8" - 16 UNC x 1 1/2" Hex Screw
26	7	3/8"-16 18-8ss Heavy Hex Nut
27	4	1/2-13 Hex Nut
28	2	Square U Bolt D 1/2" x 4" x 5" LG
29	1	Driver Side Manifold - Hose 1 (21/32" OD)
30	1	Driver Side Manifold - Hose 2 (21/32" OD)
31	2	Bulkhead 1/2"JIC X 1/2"JIC w/Locknut
32	1	Elbow-90° 1/2" JIC (37° Flare)



AVW EQUIPMENT CO., INC.
105 S. 9TH AVENUE
MAYWOOD, IL 60153
Tel: 708-343-7738 Fax: 708-343-9065
WWW.AVWEQUIPMENT.COM

- COMPANY PROPRIETARY NOTE -

THIS DRAWING AND ITS DESIGNS ARE PROPERTY OF AVW EQUIPMENT CO. & IT IS NOT TO BE USED OR REPRODUCED WITHOUT THE PERMISSION FROM AVW CO.

DRAWN BY

Darpan

CUSTOMER: AVW Equipment Co.

CHECKED BY

PROJECT: Octasquare Pivoting Oscillating High Pressure Arch - Electric

QTY

DESCRIPTION: Pivoting Oscillating Side Manifold - Driver - EL

RELEASE DATE

11/4/2021

PART NUMBER: PO1D-EL

REV# 1

DIMENSION ARE IN INCHES & PROVIDED PRIOR TO SURFACE TREATMENTS, UNLESS NOTED.

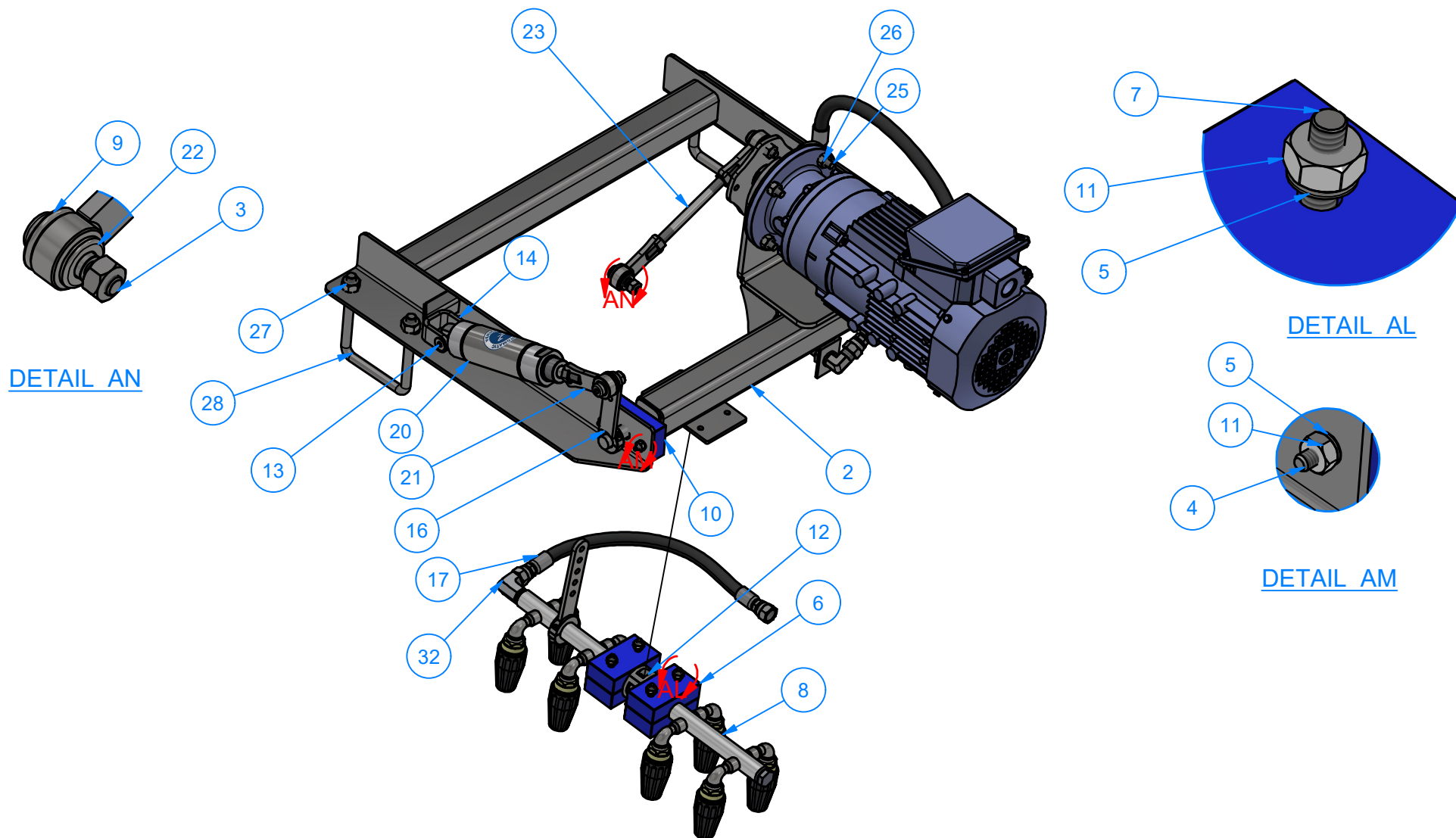
SIZE
A

EST WEIGHT:

SHEET 30 of 46

PATH:L:\Libraries\Productivity\PO1 Side Manifolds\Electric\Driver Side\PO1D- EL -Pivoting Oscillating Side (Driver Side).iam

PO1D-EL - Pivoting Oscillating Side Manifold - Driver - EL



AVW EQUIPMENT CO., INC.
105 S. 9TH AVENUE
MAYWOOD, IL 60153
Tel: 708-343-7738 Fax: 708-343-9065
WWW.AVWEQUIPMENT.COM

- COMPANY PROPRIETARY NOTE -

THIS DRAWING AND ITS DESIGNS ARE PROPERTY OF AVW EQUIPMENT CO. & IT IS NOT TO BE USED OR REPRODUCED WITHOUT THE PERMISSION FROM AVW CO.

DRAWN BY

Darpan

CUSTOMER: AVW Equipment Co.

CHECKED BY

PROJECT: Octasquare Pivoting Oscillating High Pressure Arch - Electric

QTY

DESCRIPTION: Pivoting Oscillating Side Manifold - Driver - EL

RELEASE DATE

11/4/2021

PART NUMBER: PO1D-EL

REV# 1

DIMENSION ARE IN INCHES & PROVIDED PRIOR TO SURFACE TREATMENTS, UNLESS NOTED.

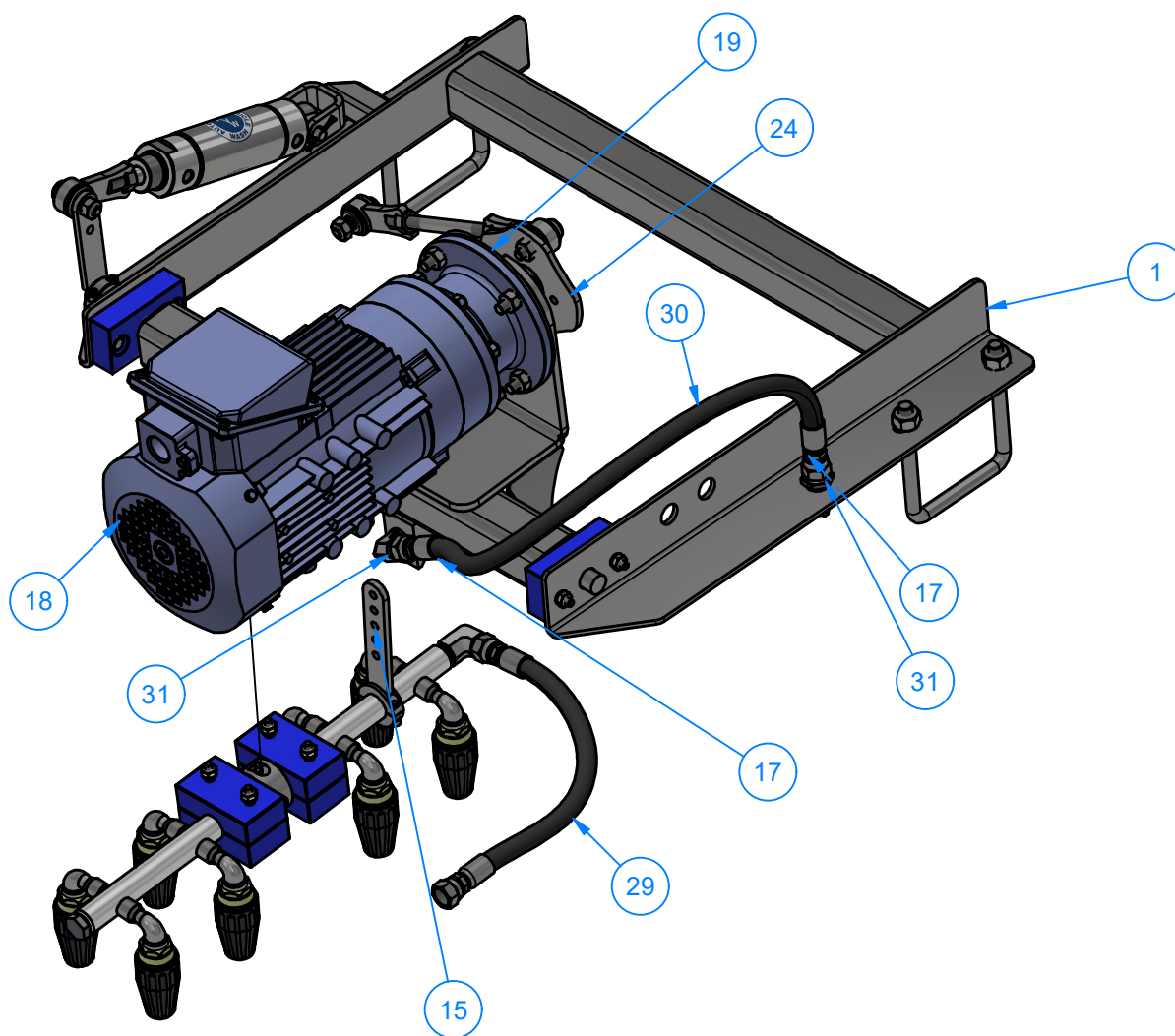
SIZE
A


EST WEIGHT:

SHEET 31 of 46

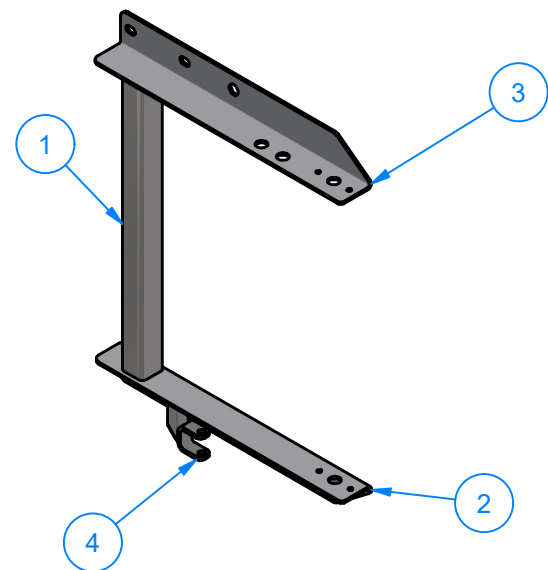
PATH:L:\Libraries\Productivity\PO1 Side Manifolds\Electric\Driver Side\PO1D-EL -Pivoting Oscillating Side (Driver Side).iam

P01D-EL - Pivoting Oscillating Side Manifold - Driver - EL

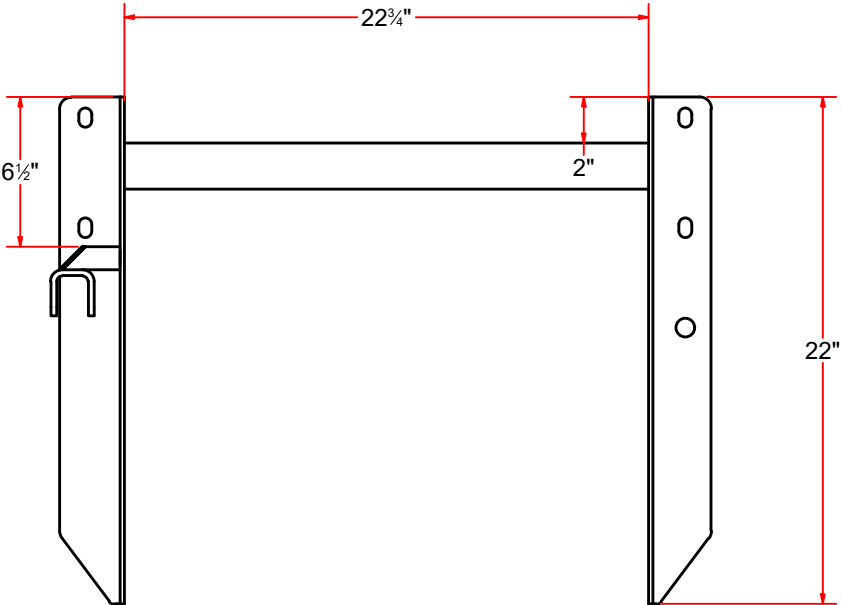


 <p>AVW EQUIPMENT CO., INC. 105 S. 9TH AVENUE MAYWOOD, IL 60153 Tel: 708-343-7738 Fax: 708-343-9065 WWW.AVWEQUIPMENT.COM</p>	DRAWN BY	Darpan	CUSTOMER: AVW Equipment Co.		
	CHECKED BY		PROJECT: Octasquare Pivoting Oscillating High Pressure Arch - Electric		
	QTY		DESCRIPTION: Pivoting Oscillating Side Manifold - Driver - EL		
<p>- COMPANY PROPRIETARY NOTE - THIS DRAWING AND ITS DESIGNS ARE PROPERTY OF AVW EQUIPMENT CO. & IT IS NOT TO BE USED OR REPRODUCED WITHOUT THE PERMISSION FROM AVW CO.</p>	RELEASE DATE	11/4/2021	PART NUMBER: PO1D-EL		REV# 1
	DIMENSION ARE IN INCHES & PROVIDED PRIOR TO SURFACE TREATMENTS, UNLESS NOTED.		SIZE A	EST WEIGHT:	SHEET 32 of 46
PATH: L:\Libraries\Productivity\PO1 Side Manifolds\Electric\Driver Side\PO1D- EL -Pivoting Oscillating Side (Driver Side).iam					

P01DB - Manifold Frame - Driver



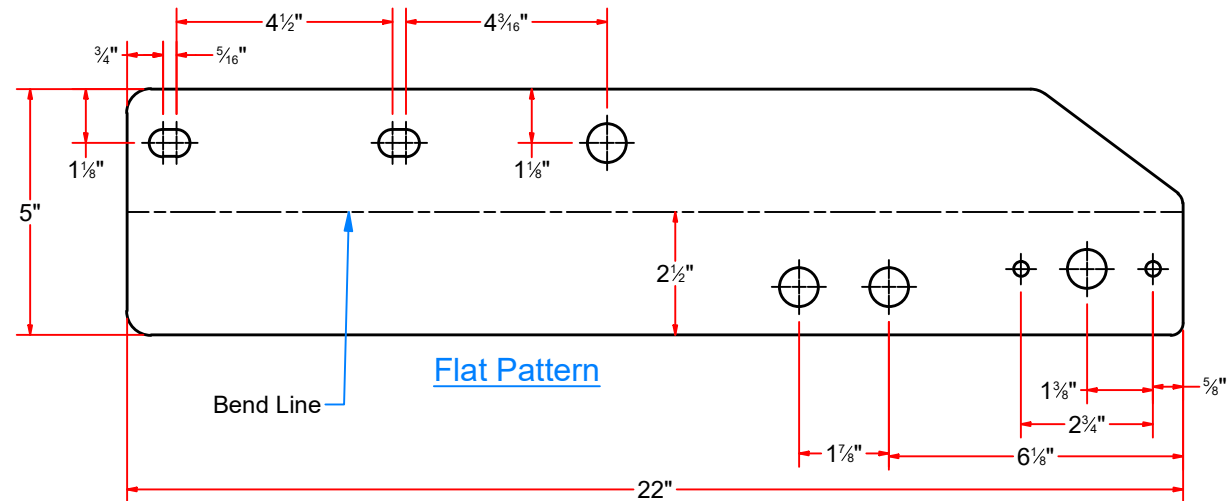
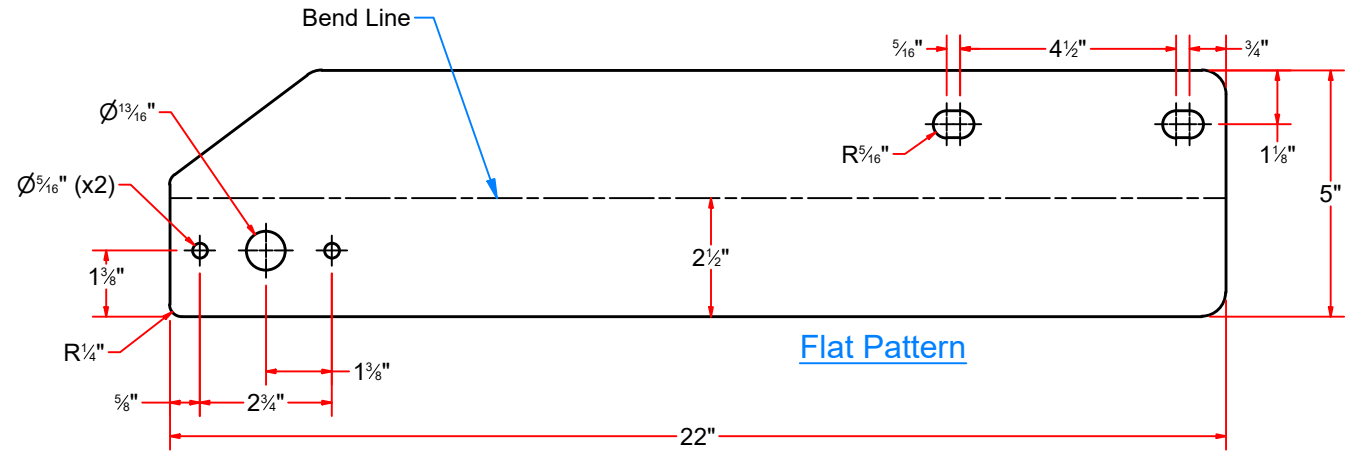
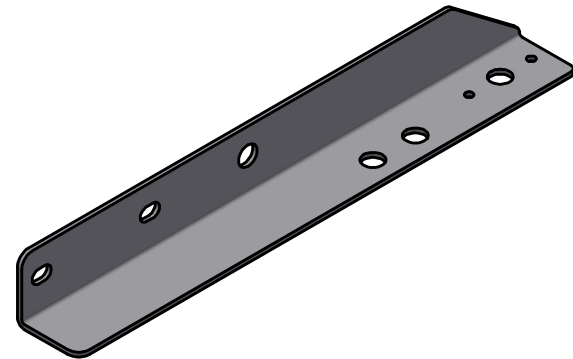
Parts List		
ITEM	QTY	DESCRIPTION
1	1	Sq. Tube 2" X 2" x 22-3/4" LG
2	1	Angle A Driver Side 2.775"x2.5"x22LG
3	1	Angle B Driver Side 2.775"x2.5"x22LG
4	1	1/2" Clevis




AVW EQUIPMENT CO., INC.
105 S. 9TH AVENUE
MAYWOOD, IL 60153
Tel: 708-343-7738 Fax: 708-343-9065
WWW.AVWEQUIPMENT.COM

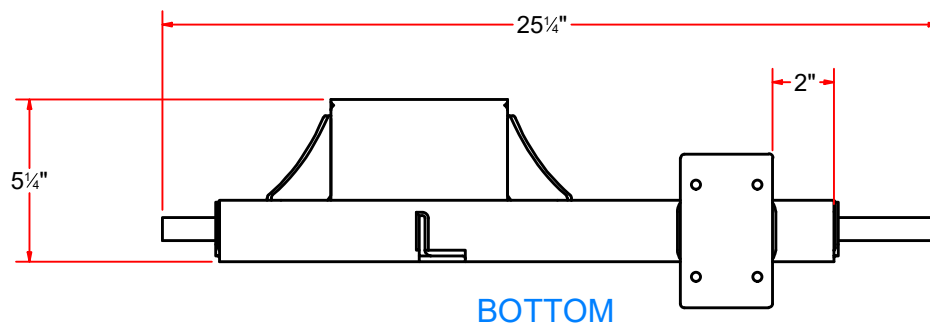
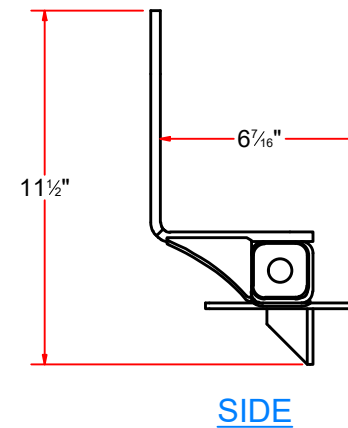
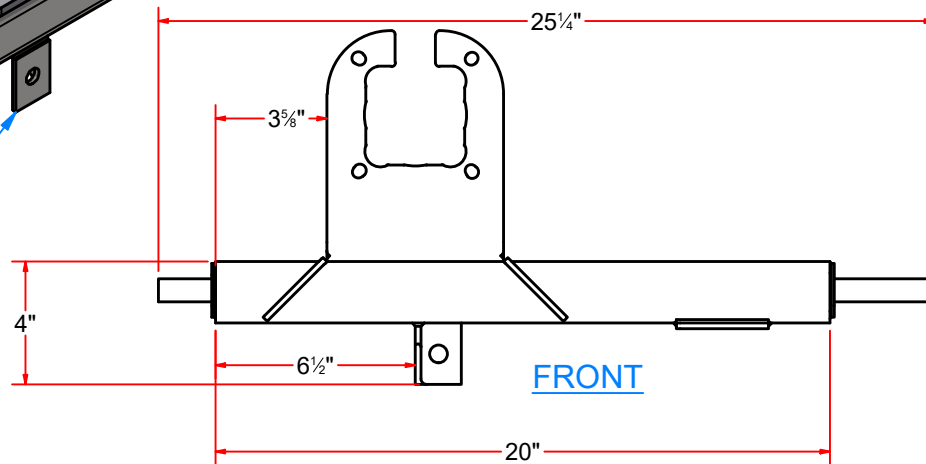
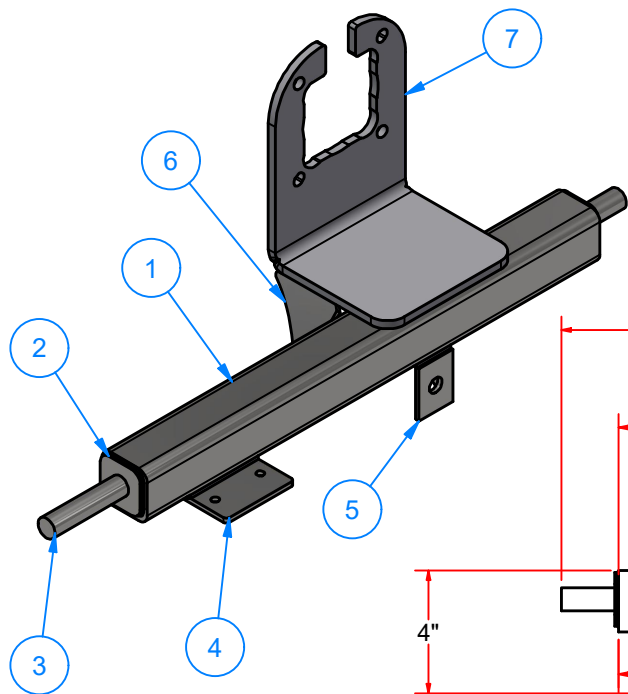
- COMPANY PROPRIETARY NOTE -
THIS DRAWING AND ITS DESIGNS ARE PROPERTY OF AVW EQUIPMENT CO. &
IT IS NOT TO BE USED OR REPRODUCED WITHOUT THE PERMISSION FROM AVW CO.

DRAWN BY	Darpan	CUSTOMER: AVW Equipment Co.	
CHECKED BY		PROJECT: Octasquare Pivoting Oscillating High Pressure Arch - Electric	
QTY		DESCRIPTION: Manifold Frame - Driver	
RELEASE DATE	11/4/2021	PART NUMBER: P01DB	REV# 1
DIMENSION ARE IN INCHES & PROVIDED PRIOR TO SURFACE TREATMENTS, UNLESS NOTED.		SIZE A	SHEET 33 of 46



 AVW EQUIPMENT CO., INC. 105 S. 9TH AVENUE MAYWOOD, IL 60153 Tel: 708-343-7738 Fax: 708-343-9065 WWW.AVWEQUIPMENT.COM	DRAWN BY	Darpan	CUSTOMER: AVW Equipment Co.		
	CHECKED BY		PROJECT: Octasquare Pivoting Oscillating High Pressure Arch - Electric		
	QTY		DESCRIPTION: Angle A Driver Side 2.775"x2.5"x22LG		
- COMPANY PROPRIETARY NOTE - THIS DRAWING AND ITS DESIGNS ARE PROPERTY OF AVW EQUIPMENT CO. & IT IS NOT TO BE USED OR REPRODUCED WITHOUT THE PERMISSION FROM AVW CO.	RELEASE DATE	11/4/2021	PART NUMBER: Angle A (Driver Side)		REV# 1
	DIMENSION ARE IN INCHES & PROVIDED PRIOR TO SURFACE TREATMENTS, UNLESS NOTED.		SIZE A	EST WEIGHT:	SHEET 34 of 46
PATH: L:\Libraries\AVW Components\Plates\PO1 Side Manifold Frames\Driver Side\Angle A (Drivers Side).ipt					

PO1DA-EL - Pivoting Bar w/ Motor Mount - Driver (Electric)



Parts List		
ITEM	QTY	DESCRIPTION
1	1	Sq. Tubing 2" x 2" xX 20" LG.
2	2	Plate #3/16" x 1 3/4" x 1 3/4"
3	1	Round Shaft 3/4" X 25-1/4" LG.
4	1	Plate #3/16" Ga x 3" x 5" LG
5	1	Angle 1.5" x 1.5" x 2" LG.
6	2	Gusset #3/16" x 2-3_4x2-3_4
7	1	Motor Mount #5/16 X 5 3/4 x 12 1/4

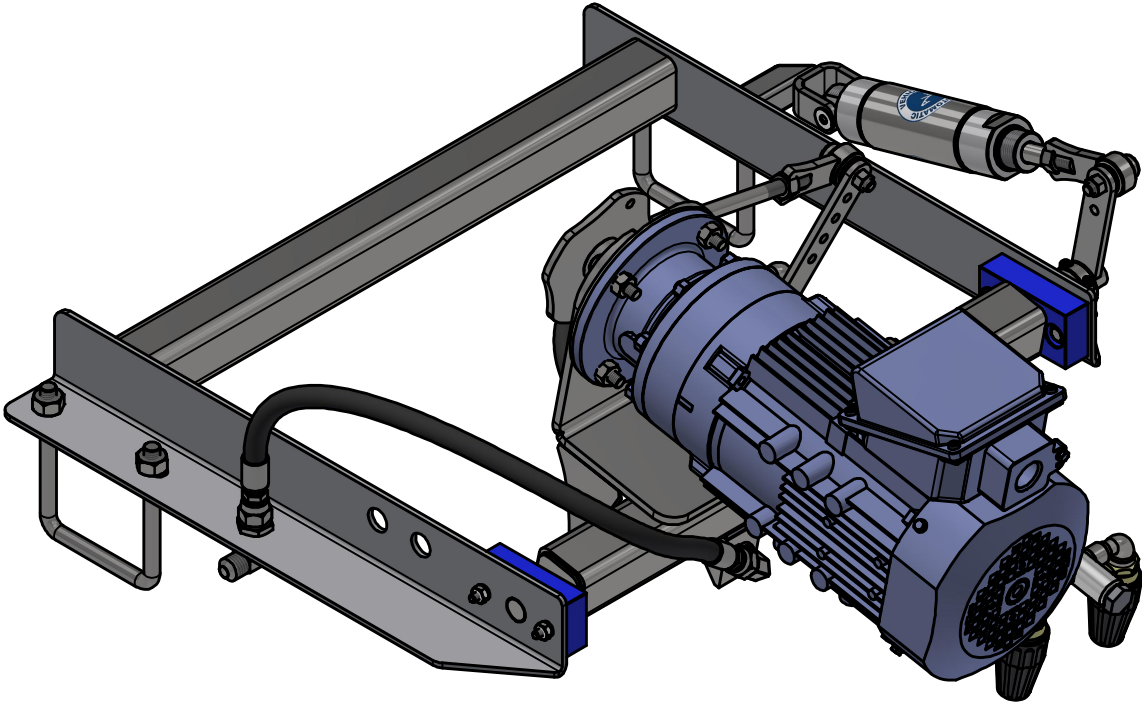


AVW EQUIPMENT CO., INC.
105 S. 9TH AVENUE
MAYWOOD, IL 60153
Tel: 708-343-7738 Fax: 708-343-9065
WWW.AVWEQUIPMENT.COM

- COMPANY PROPRIETARY NOTE -
THIS DRAWING AND ITS DESIGNS ARE PROPERTY OF AVW EQUIPMENT CO. &
IT IS NOT TO BE USED OR REPRODUCED WITHOUT THE PERMISSION FROM AVW CO.

DRAWN BY	Darpan	CUSTOMER: AVW Equipment Co.	
CHECKED BY		PROJECT: Octasquare Pivoting Oscillating High Pressure Arch - Electric	
QTY		DESCRIPTION: Pivoting Bar w/ Motor Mount - Driver (Electric)	
RELEASE DATE	11/4/2021	PART NUMBER: PO1DA-EL	REV# 1
DIMENSION ARE IN INCHES & PROVIDED PRIOR TO SURFACE TREATMENTS, UNLESS NOTED.		SIZE A	EST WEIGHT: SHEET 35 of 46

PO1E- EL - Pivoting Oscillating Side Manifold - Passenger - EL

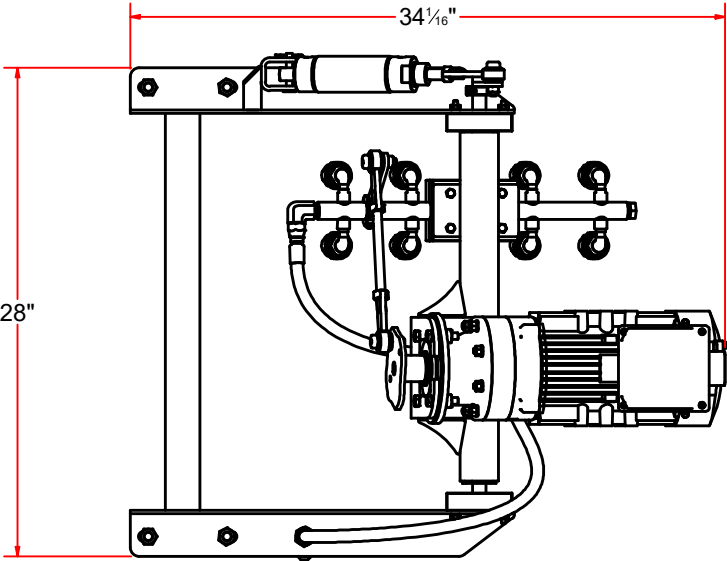


AVW EQUIPMENT CO., INC.
105 S. 9TH AVENUE
MAYWOOD, IL 60153
Tel: 708-343-7738 Fax: 708-343-9065
WWW.AVWEQUIPMENT.COM

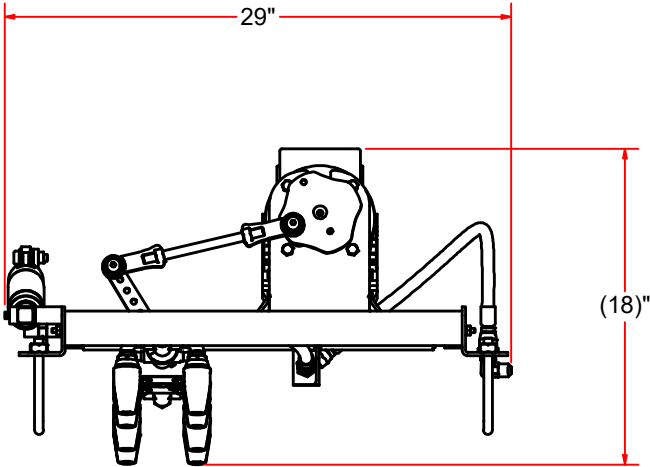
- COMPANY PROPRIETARY NOTE -
THIS DRAWING AND ITS DESIGNS ARE PROPERTY OF AVW EQUIPMENT CO. &
IT IS NOT TO BE USED OR REPRODUCED WITHOUT THE PERMISSION FROM AVW CO.

DRAWN BY	Darpan	CUSTOMER: AVW Equipment Co.	
CHECKED BY		PROJECT: Octasquare Pivoting Oscillating High Pressure Arch - Electric	
QTY		DESCRIPTION: Pivoting Oscillating Side Manifold - Passenger - EL	
RELEASE DATE	11/4/2021	PART NUMBER: PO1E- EL	REV# 1
DIMENSION ARE IN INCHES & PROVIDED PRIOR TO SURFACE TREATMENTS, UNLESS NOTED.		SIZE A	EST WEIGHT: SHEET 36 of 46

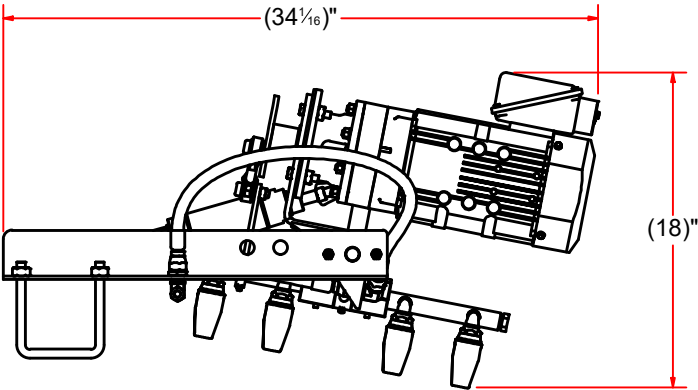
PO1E- EL - Pivoting Oscillating Side Manifold - Passenger - EL



TOP



FRONT



SIDE



AVW EQUIPMENT CO., INC.
105 S. 9TH AVENUE
MAYWOOD, IL 60153
Tel: 708-343-7738 Fax: 708-343-9065
WWW.AVWEQUIPMENT.COM

- COMPANY PROPRIETARY NOTE -
THIS DRAWING AND ITS DESIGNS ARE PROPERTY OF AVW EQUIPMENT CO. &
IT IS NOT TO BE USED OR REPRODUCED WITHOUT THE PERMISSION FROM AVW CO.

DRAWN BY	Darpan	CUSTOMER: AVW Equipment Co.	
CHECKED BY		PROJECT: Octasquare Pivoting Oscillating High Pressure Arch - Electric	
QTY		DESCRIPTION: Pivoting Oscillating Side Manifold - Passenger - EL	
RELEASE DATE	11/4/2021	PART NUMBER: PO1E- EL	REV# 1
DIMENSION ARE IN INCHES & PROVIDED PRIOR TO SURFACE TREATMENTS, UNLESS NOTED.		SIZE A	EST WEIGHT: SHEET 37 of 46

PO1E- EL - Pivoting Oscillating Side Manifold - Passenger - EL

Parts List		
ITEM	QTY	DESCRIPTION
1	2	UHMW Block - 2 Peice
2	4	1/4" - 20 x 2.5" UNC Hex Screw
3	8	1/4" N FLAT WASHER
4	4	Hex Cap Screw - 1/4"-20 X 1-1/2"
5	3	Shoulder Bolt - 1/2" X 1" LG (3/8" Thread)
6	2	UHMW Block 3-3/4" x 2" x 1"
7	9	1/2" N Flat Washer
8	1	SS Split Collar- 1in
9	1	Pin 3/8" x 2" LG
10	1	Cotter Pin
11	1	5in Cam Arm w/ 5 Holes
12	1	4in Cam Arm
13	1	Manifold Assembly - 18" LG.
14	4	1/2" FJIC, 37°-3/8" Hose Crimp
15	1	Pivoting Bar w/ Motor Mount - Passenger
16	1	CNVM1H-6100Y-EP Motor

Parts List		
ITEM	QTY	DESCRIPTION
17	1	SS Plate #10Gax 6 1/4" OD
18	4	3/8" - 16 UNC x 1 1/2" Hex Screw
19	4	3/8"-16 18-8ss Heavy Hex Nut
20	1	Air Cylinder 2" x 3"
21	1	Ball Joint End Rod
22	1	Oscillating Arm Assembly 7"
23	1	Oscillating Disk 1_1/8"
24	1	Manifold Frame - Passenger
25	4	1/4"-20 18-8ss Heavy Hex Nut
26	3	Hex Nut - 3/8"-16
27	4	1/2-13 Hex Nut
28	4	1/4"-20 Hex Nut
29	2	Square U Bolt D 1/2" x 4" x 5" LG
30	1	Passenger Side Manifold - Hose 1 (21/32" OD)
31	1	Passenger Side Manifold - Hose 2 (21/32" OD)
32	1	Elbow-90° 1/2" JIC (37° Flare)
33	2	Bulkhead 1/2"JIC X 1/2"JIC w/Locknut



AVW EQUIPMENT CO., INC.
105 S. 9TH AVENUE
MAYWOOD, IL 60153
Tel: 708-343-7738 Fax: 708-343-9065
WWW.AVWEQUIPMENT.COM

- COMPANY PROPRIETARY NOTE -

THIS DRAWING AND ITS DESIGNS ARE PROPERTY OF AVW EQUIPMENT CO. & IT IS NOT TO BE USED OR REPRODUCED WITHOUT THE PERMISSION FROM AVW CO.

RELEASE
DATE

11/4/2021

DIMENSION ARE IN INCHES & PROVIDED PRIOR
TO SURFACE TREATMENTS, UNLESS NOTED.

SIZE
A

EST WEIGHT:

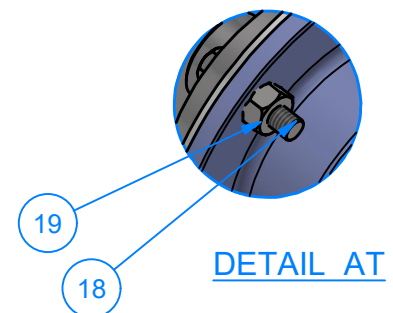
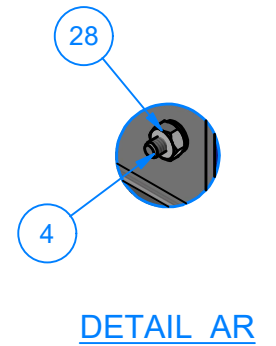
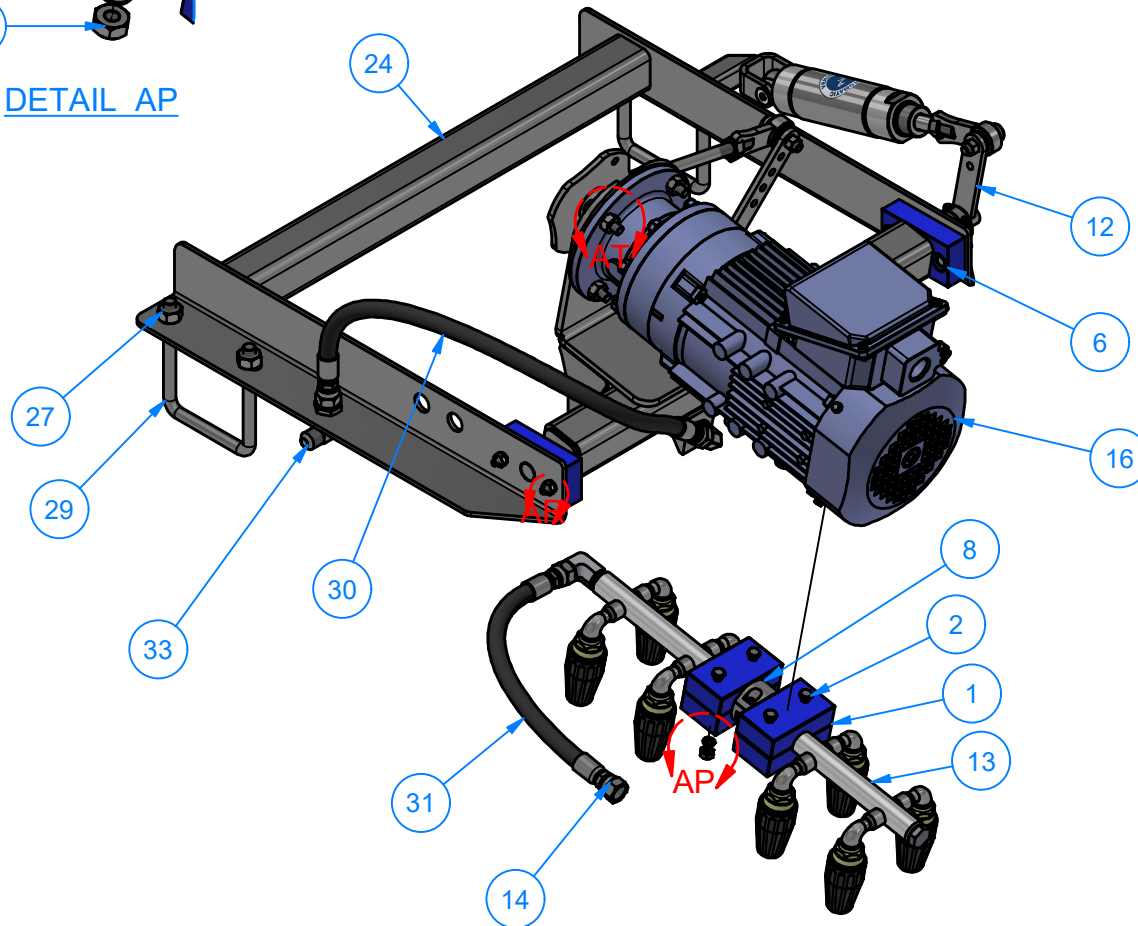
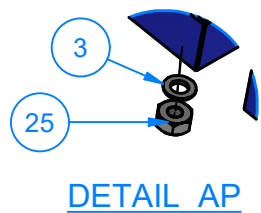
PART NUMBER: PO1E- EL

REV# 1

PATH:L:\Libraries\Productivity\PO1 Side Manifolds\Electric\Passenger Side\PO1E- EL - Pivoting Oscillating Side Manifold.iam

SHEET 38 of 46

PO1E- EL - Pivoting Oscillating Side Manifold - Passenger - EL



AVW EQUIPMENT CO., INC.
105 S. 9TH AVENUE
MAYWOOD, IL 60153
Tel: 708-343-7738 Fax: 708-343-9065
WWW.AVWEQUIPMENT.COM

- COMPANY PROPRIETARY NOTE -

THIS DRAWING AND ITS DESIGNS ARE PROPERTY OF AVW EQUIPMENT CO. & IT IS NOT TO BE USED OR REPRODUCED WITHOUT THE PERMISSION FROM AVW CO.

DRAWN BY

Darpan

CUSTOMER: AVW Equipment Co.

CHECKED BY

PROJECT: Octasquare Pivoting Oscillating High Pressure Arch - Electric

QTY

DESCRIPTION: Pivoting Oscillating Side Manifold - Passenger - EL

RELEASE DATE

11/4/2021

PART NUMBER: PO1E- EL

REV# 1

DIMENSION ARE IN INCHES & PROVIDED PRIOR TO SURFACE TREATMENTS, UNLESS NOTED.

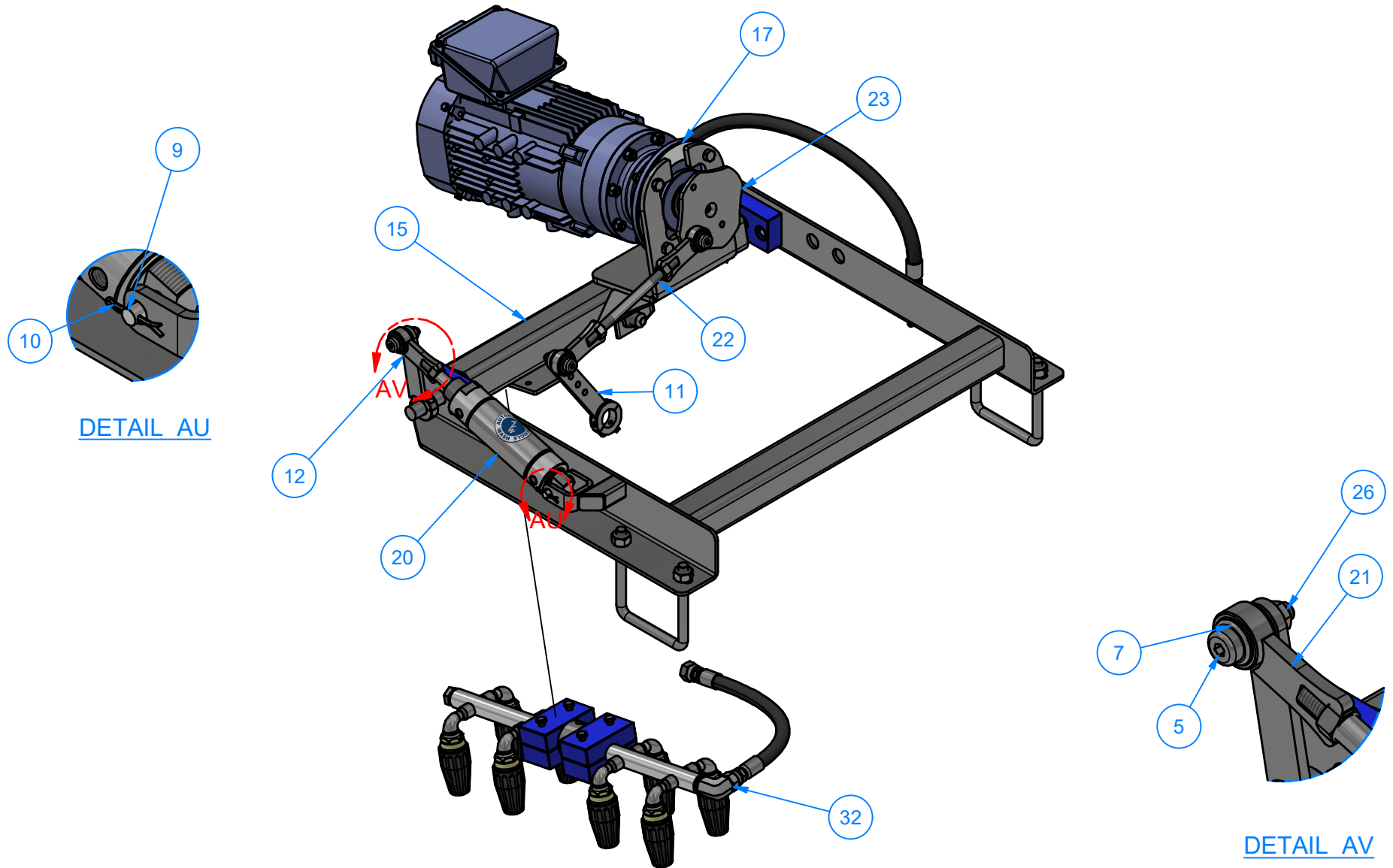
SIZE
A

EST WEIGHT:

SHEET 39 of 46

PATH: L:\Libraries\Productivity\PO1 Side Manifolds\Electric\Passenger Side\PO1E- EL - Pivoting Oscillating Side Manifold.iam

PO1E- EL - Pivoting Oscillating Side Manifold - Passenger - EL



AVW EQUIPMENT CO., INC.
105 S. 9TH AVENUE
MAYWOOD, IL 60153
Tel: 708-343-7738 Fax: 708-343-9065
WWW.AVWEQUIPMENT.COM

- COMPANY PROPRIETARY NOTE -

THIS DRAWING AND ITS DESIGNS ARE PROPERTY OF AVW EQUIPMENT CO. & IT IS NOT TO BE USED OR REPRODUCED WITHOUT THE PERMISSION FROM AVW CO.

DRAWN BY

Darpan

CUSTOMER: AVW Equipment Co.

CHECKED BY

PROJECT: Octasquare Pivoting Oscillating High Pressure Arch - Electric

QTY

DESCRIPTION: Pivoting Oscillating Side Manifold - Passenger - EL

RELEASE DATE

11/4/2021

PART NUMBER: PO1E- EL

REV# 1

DIMENSION ARE IN INCHES & PROVIDED PRIOR TO SURFACE TREATMENTS, UNLESS NOTED.

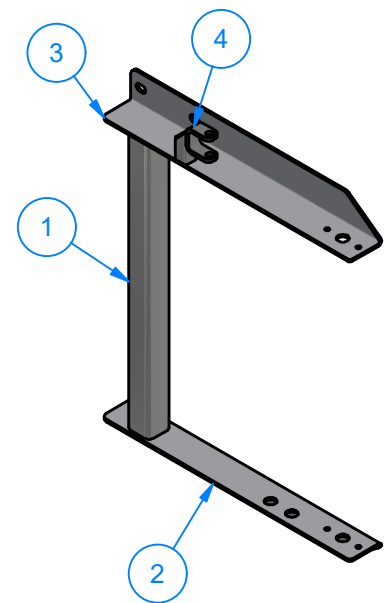
SIZE
A

EST WEIGHT:

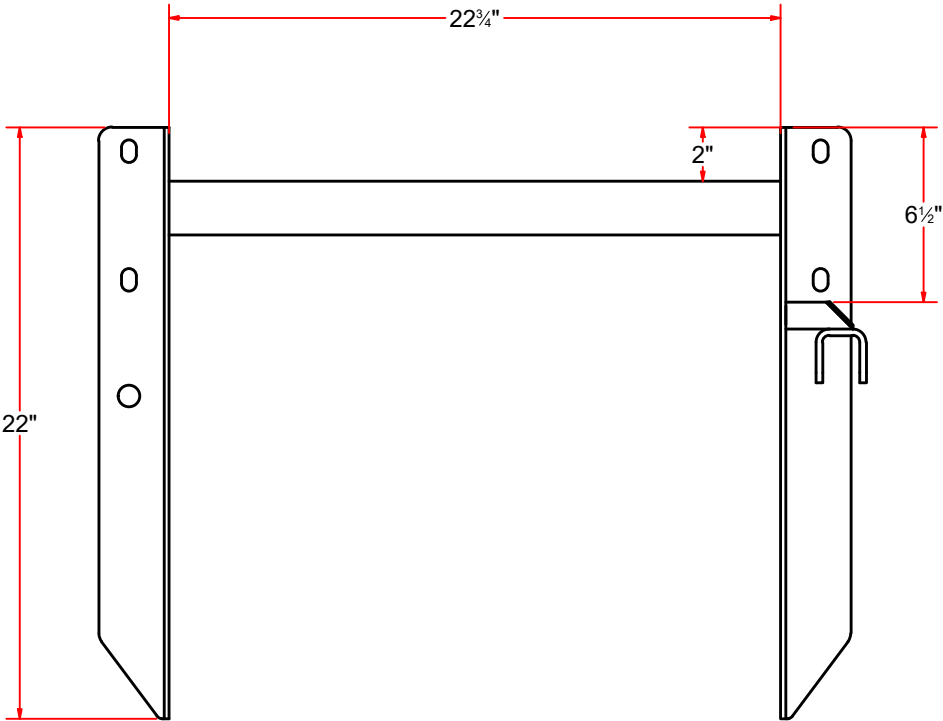
SHEET 40 of 46

PATH: L:\Libraries\Productivity\PO1 Side Manifolds\Electric\Passenger Side\PO1E- EL - Pivoting Oscillating Side Manifold.iam

PO1EB - Manifold Frame - Passenger



Parts List		
ITEM	QTY	DESCRIPTION
1	1	Sq. Tube 2" X 2" x 22-3/4" LG
2	1	Angle B Passenger Side 2.775"x2.5"x22LG
3	1	Angle A Passenger Side 2.775"x2.5"x22LG
4	1	1/2" Clevis

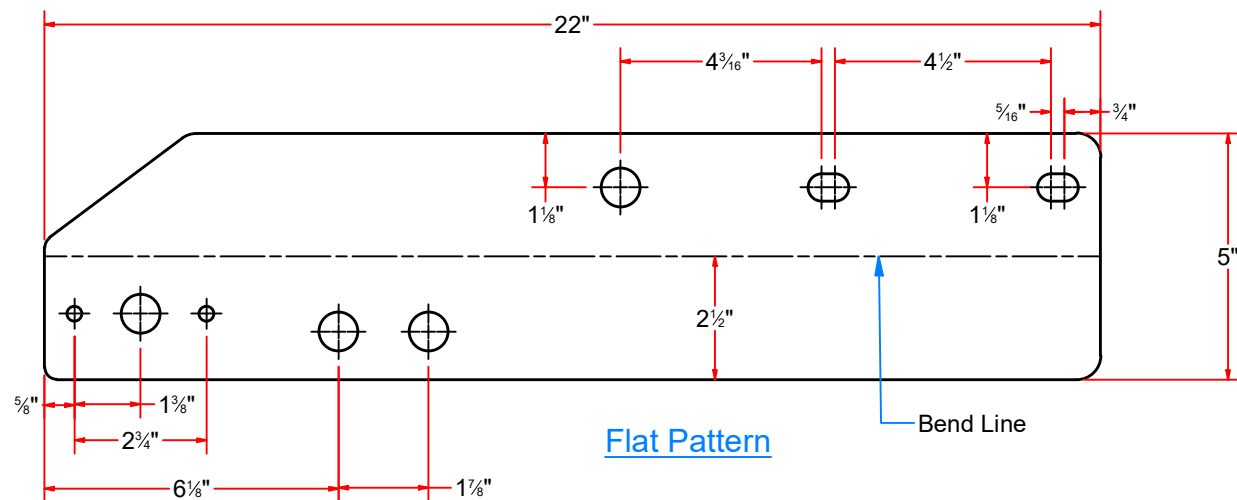
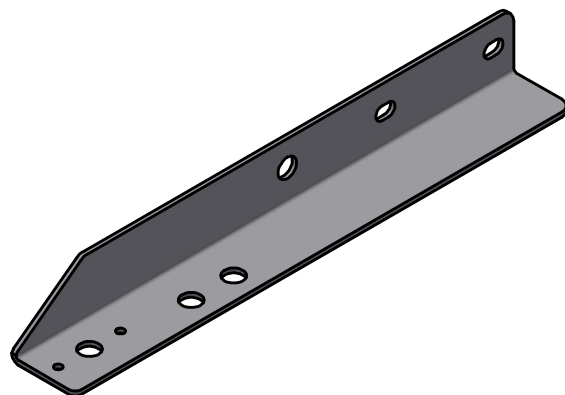
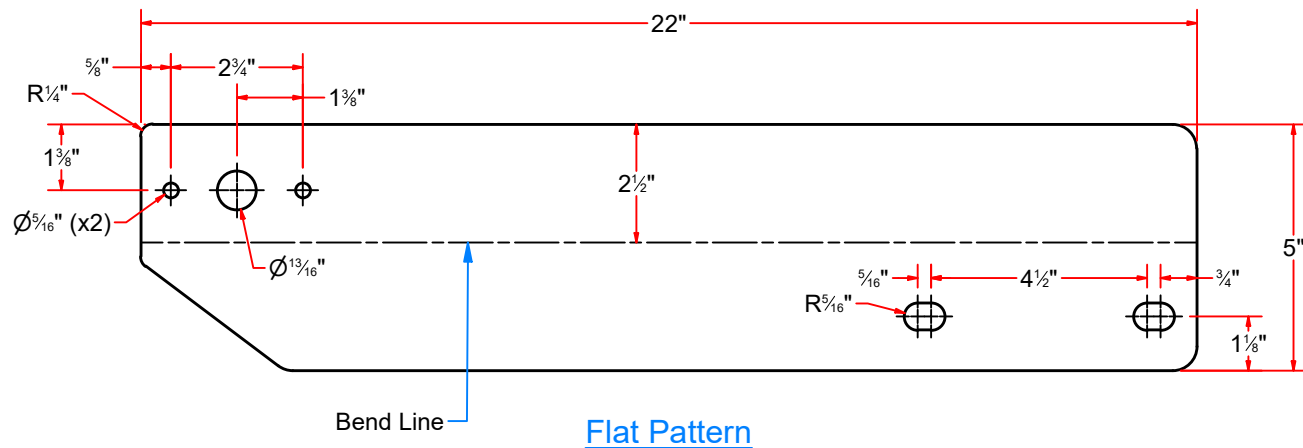
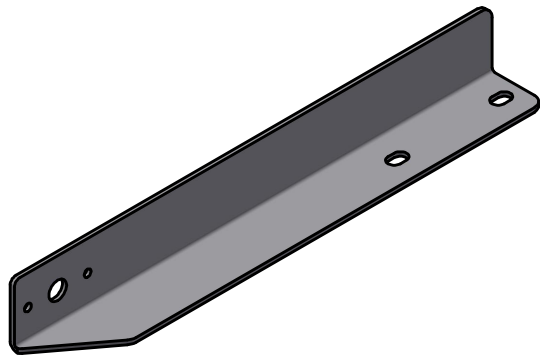


AVW EQUIPMENT CO., INC.
105 S. 9TH AVENUE
MAYWOOD, IL 60153
Tel: 708-343-7738 Fax: 708-343-9065
WWW.AVWEQUIPMENT.COM

- COMPANY PROPRIETARY NOTE -
THIS DRAWING AND ITS DESIGNS ARE PROPERTY OF AVW EQUIPMENT CO. &
IT IS NOT TO BE USED OR REPRODUCED WITHOUT THE PERMISSION FROM AVW CO.

DRAWN BY	Darpan	CUSTOMER: AVW Equipment Co.	
CHECKED BY		PROJECT: Octasquare Pivoting Oscillating High Pressure Arch - Electric	
QTY		DESCRIPTION: Manifold Frame - Passenger	
RELEASE DATE	11/4/2021	PART NUMBER: PO1EB	REV# 1
DIMENSION ARE IN INCHES & PROVIDED PRIOR TO SURFACE TREATMENTS, UNLESS NOTED.		SIZE A	EST WEIGHT: SHEET 41 of 46

Passenger Side Angle Plates



AVW EQUIPMENT CO., INC.
105 S. 9TH AVENUE
MAYWOOD, IL 60153
Tel: 708-343-7738 Fax: 708-343-9065
WWW.AVWEQUIPMENT.COM

- COMPANY PROPRIETARY NOTE -

THIS DRAWING AND ITS DESIGNS ARE PROPERTY OF AVW EQUIPMENT CO. & IT IS NOT TO BE USED OR REPRODUCED WITHOUT THE PERMISSION FROM AVW CO.

DRAWN BY

Darpan

CUSTOMER: AVW Equipment Co.

CHECKED BY

PROJECT: Octasquare Pivoting Oscillating High Pressure Arch - Electric

QTY

DESCRIPTION: Angle A Passenger Side 2.775"x2.5"x22LG

RELEASE DATE

11/4/2021

PART NUMBER: PO1EBB-EL

REV# 1

DIMENSION ARE IN INCHES & PROVIDED PRIOR TO SURFACE TREATMENTS, UNLESS NOTED.

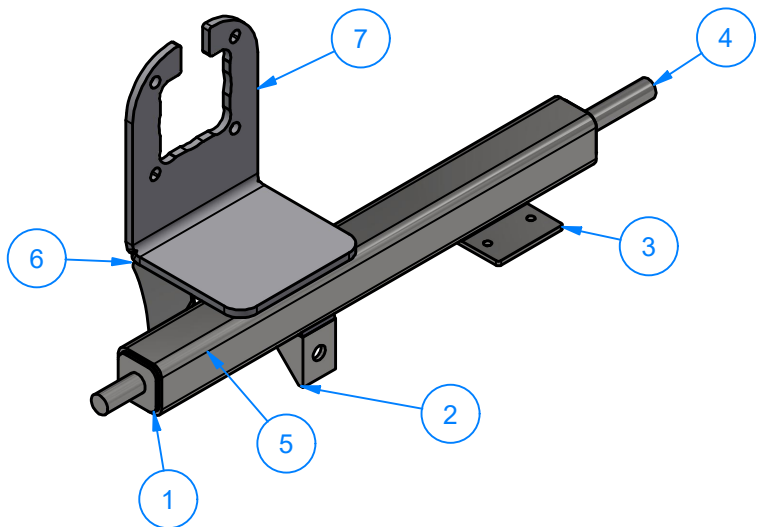
SIZE
A

EST WEIGHT:

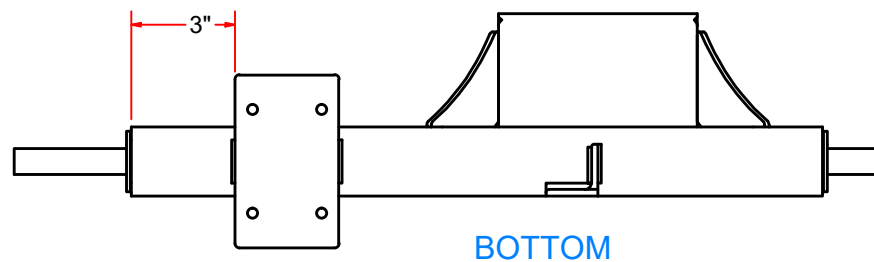
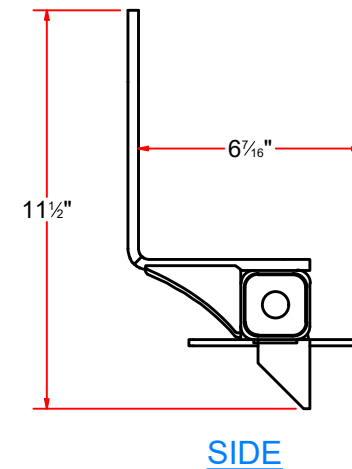
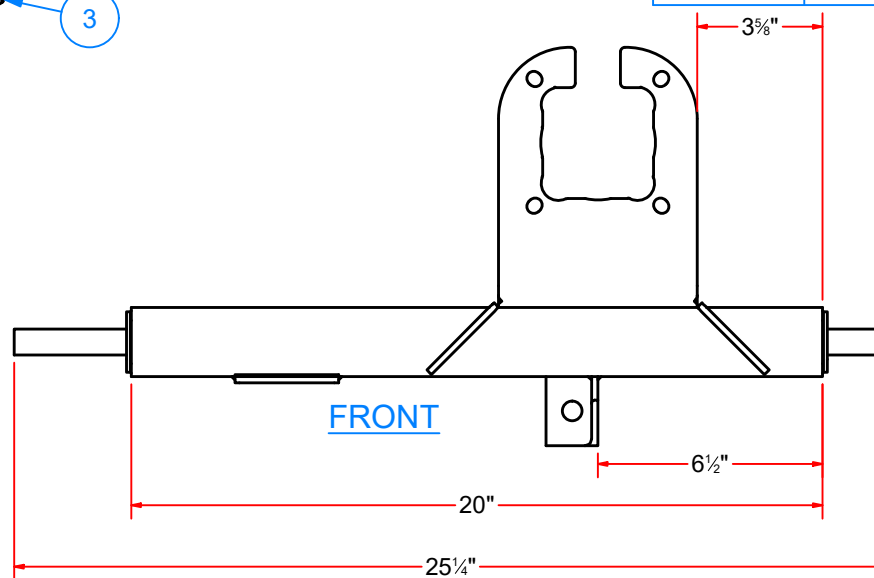
SHEET 42 of 46

PATH: L:\Libraries\AVW Components\Plates\PO1 Side Manifold Frames\Passenger Side\Angle A (Passenger Side).ipt

PO1EA-EL - Pivoting Bar w/ Motor Mount - Passenger



Parts List		
ITEM	QTY	DESCRIPTION
1	2	Plate #3/16" x 1 3/4" x 1 3/4"
2	1	ANGLE 1.5" X 1.5" X .1875" WALL X 2" LG.
3	1	Plate #3/16" Ga x 3" x 5" LG
4	1	Round Shaft 3/4" X 25-1/4" LG.
5	1	Sq. Tubing 2" x 2" xX 20" LG.
6	2	Gusset #3/16" x 2-3_4x2-3_4
7	1	Motor Mount #5/16 X 5 3/4 x 12 1/4



AVW EQUIPMENT CO., INC.
105 S. 9TH AVENUE
MAYWOOD, IL 60153
Tel: 708-343-7738 Fax: 708-343-9065
WWW.AVWEQUIPMENT.COM

- COMPANY PROPRIETARY NOTE -

THIS DRAWING AND ITS DESIGNS ARE PROPERTY OF AVW EQUIPMENT CO. & IT IS NOT TO BE USED OR REPRODUCED WITHOUT THE PERMISSION FROM AVW CO.

DRAWN BY

Darpan

CUSTOMER: AVW Equipment Co.

CHECKED BY

PROJECT: Octasquare Pivoting Oscillating High Pressure Arch - Electric

QTY

DESCRIPTION: Pivoting Bar w/ Motor Mount - Passenger

RELEASE DATE

11/4/2021

PART NUMBER: PO1EA-EL

REV# 1

DIMENSION ARE IN INCHES & PROVIDED PRIOR TO SURFACE TREATMENTS, UNLESS NOTED.

SIZE

A

EST WEIGHT:

SHEET 43 of 46

PATH:L:\Libraries\Productivity\PO1 Side Manifolds\Electric\Passenger Side\Parts\Oscillating Tube Passenger Side (Motor Mount Tube).iam

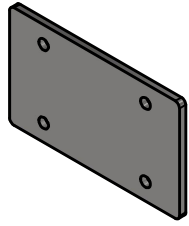
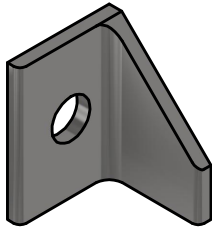
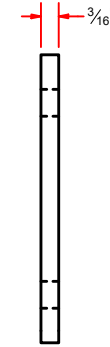
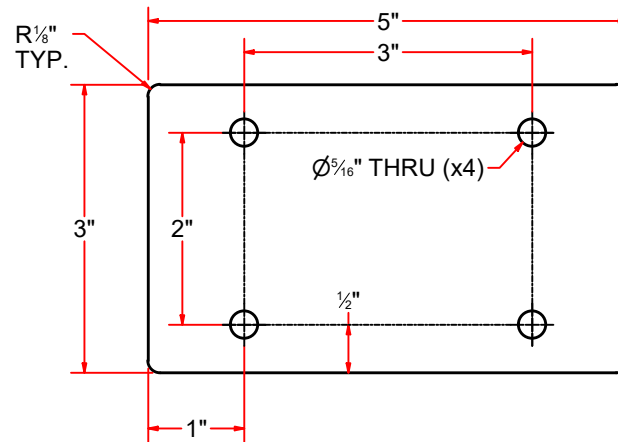
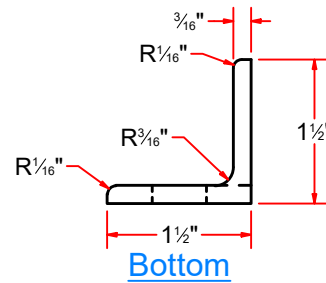
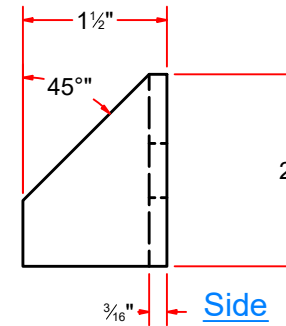
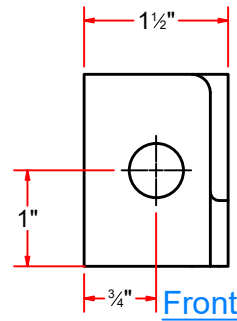


Plate #3/16" Ga x 3" x 5" LG



Angle 1.5" x 1.5" x 2" LG.



AVW EQUIPMENT CO., INC.
105 S. 9TH AVENUE
MAYWOOD, IL 60153
Tel: 708-343-7738 Fax: 708-343-9065
WWW.AVWEQUIPMENT.COM

- COMPANY PROPRIETARY NOTE -

THIS DRAWING AND ITS DESIGNS ARE PROPERTY OF AVW EQUIPMENT CO. & IT IS NOT TO BE USED OR REPRODUCED WITHOUT THE PERMISSION FROM AVW CO.

PATH:L:\Libraries\AVW Components\Plates\Plate #3_16 Ga x 3 x 5 LG.jpt

DRAWN BY

Darpan

CUSTOMER: AVW Equipment Co.

CHECKED BY

PROJECT: Octasquare Pivoting Oscillating High Pressure Arch - Electric

QTY

DESCRIPTION: Plate #3/16" Ga x 3" x 5" LG

RELEASE DATE

11/4/2021

PART NUMBER: Plate #3_16 Ga x 3 x 5 LG

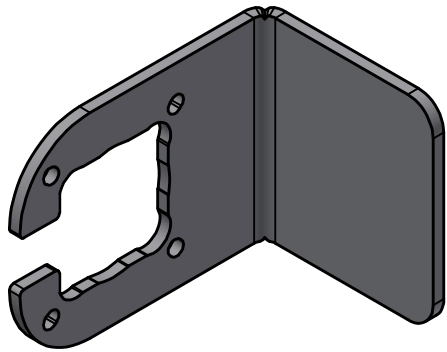
REV# 1

DIMENSION ARE IN INCHES & PROVIDED PRIOR TO SURFACE TREATMENTS, UNLESS NOTED.

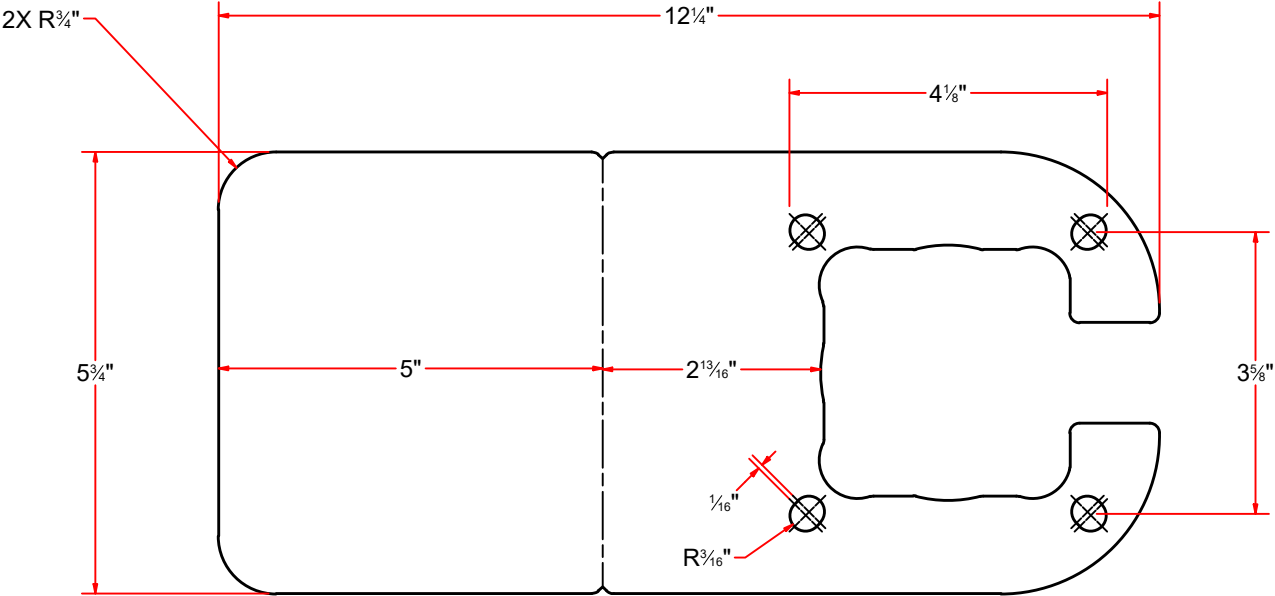
SIZE
A

EST WEIGHT:

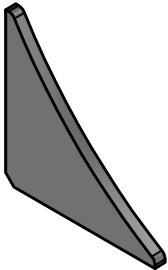
SHEET 44 of 46



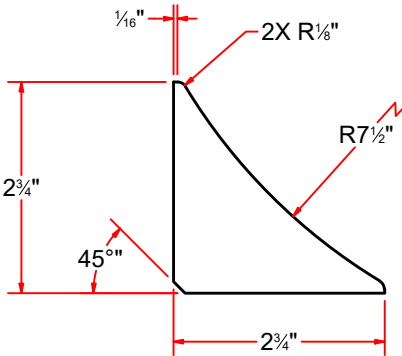
Motor Mount #5/16 X 5 3/4 x 12 1/4



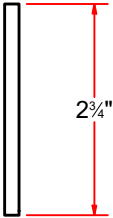
FLAT PATTERN



Gusset #3/16" x 2-3 4x2-3 4



FRONT



SIDE

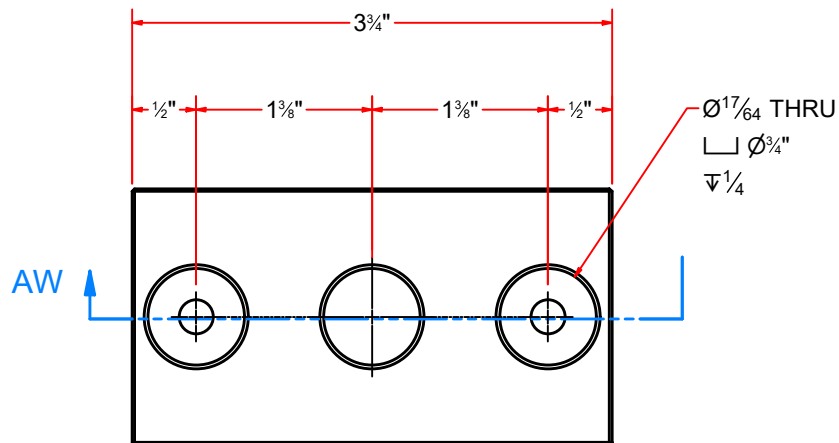
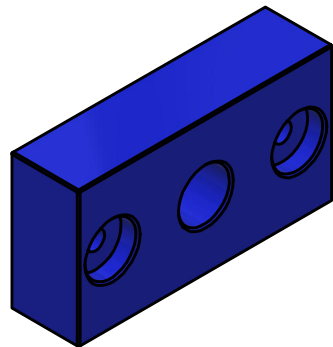


AVW EQUIPMENT CO., INC.
105 S. 9TH AVENUE
MAYWOOD, IL 60153
Tel: 708-343-7738 Fax: 708-343-9065
WWW.AVWEQUIPMENT.COM

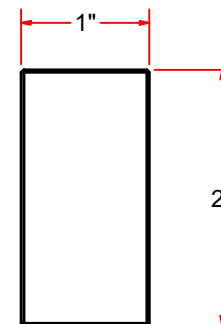
- COMPANY PROPRIETARY NOTE -
THIS DRAWING AND ITS DESIGNS ARE PROPERTY OF AVW EQUIPMENT CO. &
IT IS NOT TO BE USED OR REPRODUCED WITHOUT THE PERMISSION FROM AVW CO.

DRAWN BY	Darpan	CUSTOMER: AVW Equipment Co.	
CHECKED BY		PROJECT: Octasquare Pivoting Oscillating High Pressure Arch - Electric	
QTY		DESCRIPTION: Motor Mount #5/16 X 5 3/4 x 12 1/4	
RELEASE DATE	11/4/2021	PART NUMBER: PO1MM-EL	REV# 1
DIMENSION ARE IN INCHES & PROVIDED PRIOR TO SURFACE TREATMENTS, UNLESS NOTED.		SIZE A	EST WEIGHT: SHEET 45 of 46

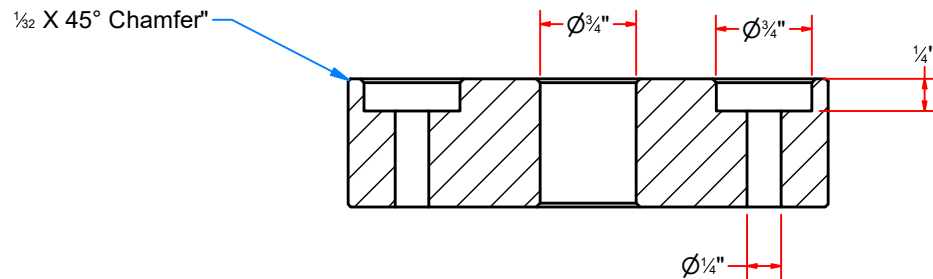
PO1C1A - UHMW Block 3-3/4" x 2" x 1"



FRONT



SIDE



SECTION AW-AW



AVW EQUIPMENT CO., INC.
105 S. 9TH AVENUE
MAYWOOD, IL 60153
Tel: 708-343-7738 Fax: 708-343-9065
WWW.AVWEQUIPMENT.COM

- COMPANY PROPRIETARY NOTE -

THIS DRAWING AND ITS DESIGNS ARE PROPERTY OF AVW EQUIPMENT CO. & IT IS NOT TO BE USED OR REPRODUCED WITHOUT THE PERMISSION FROM AVW CO.

DRAWN BY

Darpan

CUSTOMER: AVW Equipment Co.

CHECKED BY

PROJECT: Octasquare Pivoting Oscillating High Pressure Arch - Electric

QTY

DESCRIPTION: UHMW Block 3-3/4" x 2" x 1"

RELEASE DATE

11/4/2021

PART NUMBER: PO1C1A

REV# 1

DIMENSION ARE IN INCHES & PROVIDED PRIOR TO SURFACE TREATMENTS, UNLESS NOTED.

SIZE
A

EST WEIGHT:

SHEET 46 of 46