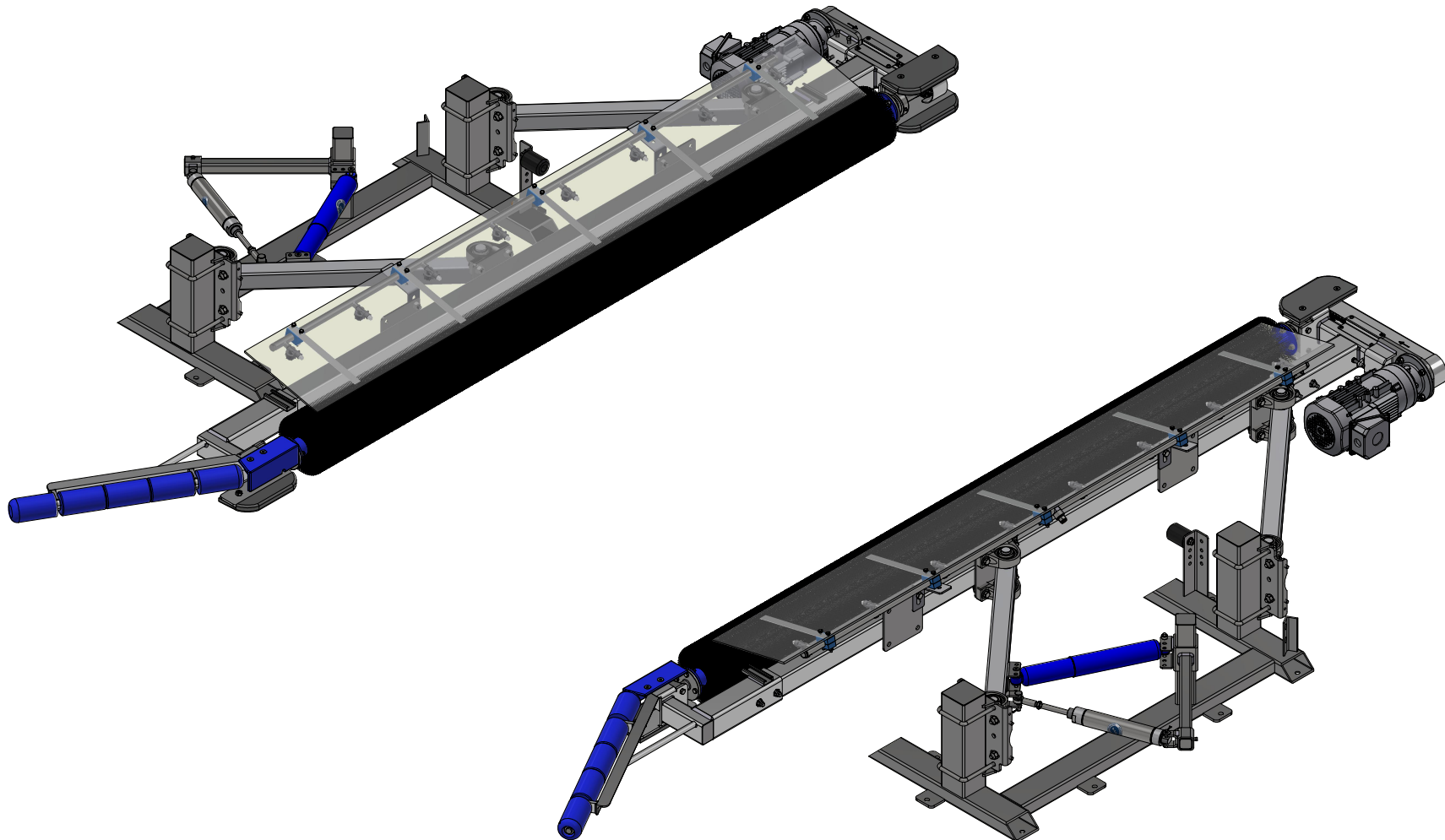


TB4-EL - Tire Dressing Applicator [Electric]



AVW EQUIPMENT CO., INC.
105 S. 9TH AVENUE
MAYWOOD, IL 60153
Tel: 708-343-7738 Fax: 708-343-9065
WWW.AVWEQUIPMENT.COM

- COMPANY PROPRIETARY NOTE -

THIS DRAWING AND ITS DESIGNS ARE PROPERTY OF AVW EQUIPMENT CO. &
IT IS NOT TO BE USED OR REPRODUCED WITHOUT THE PERMISSION FROM AVW CO.

DRAWN BY

Ljubomir

CUSTOMER: AVW Equipment

CHECKED BY

PROJECT: Tire Shine

QTY

DESCRIPTION: Tire Dressing Applicator [Electric]

RELEASE
DATE

8/7/2021

PART NUMBER: TB4-EL

REV#

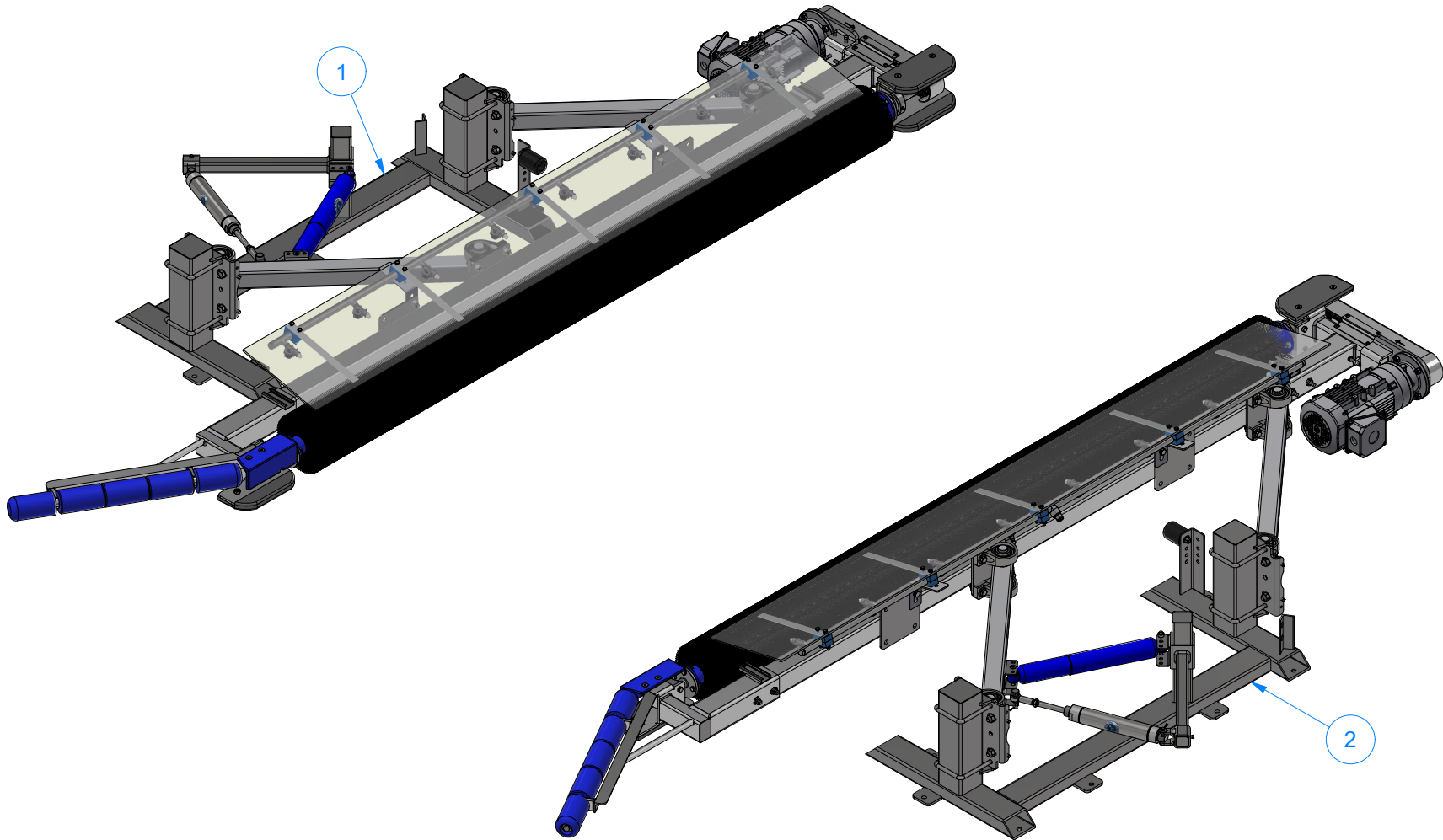
DIMENSION ARE IN INCHES & PROVIDED PRIOR
TO SURFACE TREATMENTS, UNLESS NOTED.

SIZE
A

EST WEIGHT:

SHEET 1 of 45

| Parts List | | |
|------------|-----|---|
| ITEM | QTY | DESCRIPTION |
| 1 | 1 | Tire Dressing Applicator [Driver Side] |
| 2 | 1 | Tire Dressing Applicator [Passenger Side] |



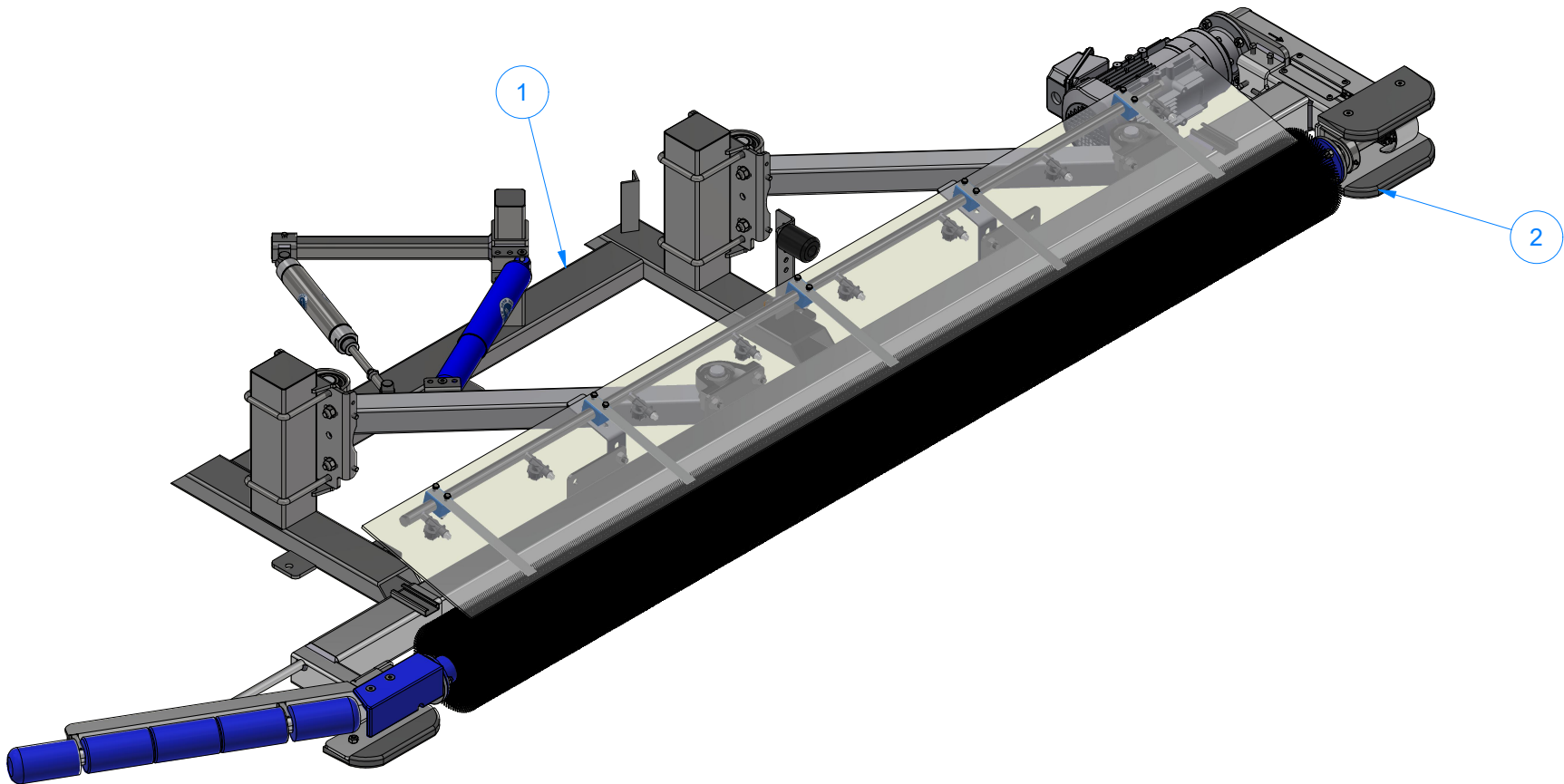
AVW EQUIPMENT CO., INC.
105 S. 9TH AVENUE
MAYWOOD, IL 60153
Tel: 708-343-7738 Fax: 708-343-9065
WWW.AVWEQUIPMENT.COM

- COMPANY PROPRIETARY NOTE -
THIS DRAWING AND ITS DESIGNS ARE PROPERTY OF AVW EQUIPMENT CO. &
IT IS NOT TO BE USED OR REPRODUCED WITHOUT THE PERMISSION FROM AVW CO.

| | | | |
|---|----------|--|---------------|
| DRAWN BY | Ljubomir | CUSTOMER: AVW Equipment | |
| CHECKED BY | | PROJECT: Tire Shine | |
| QTY | | DESCRIPTION: Tire Dressing Applicator [Electric] | |
| RELEASE DATE | 8/7/2021 | PART NUMBER: TB4-EL | REV# |
| DIMENSION ARE IN INCHES & PROVIDED PRIOR TO SURFACE TREATMENTS, UNLESS NOTED. | | SIZE A | EST WEIGHT: |
| | | | SHEET 2 of 45 |

TB4A-EL - Tire Dressing Applicator [Driver Side]

| Parts List | | |
|------------|-----|---------------------------------------|
| ITEM | QTY | DESCRIPTION |
| 1 | 1 | Tire Dressing Frame Assembly [Driver] |
| 2 | 1 | Tire Brush Assembly [Driver] |



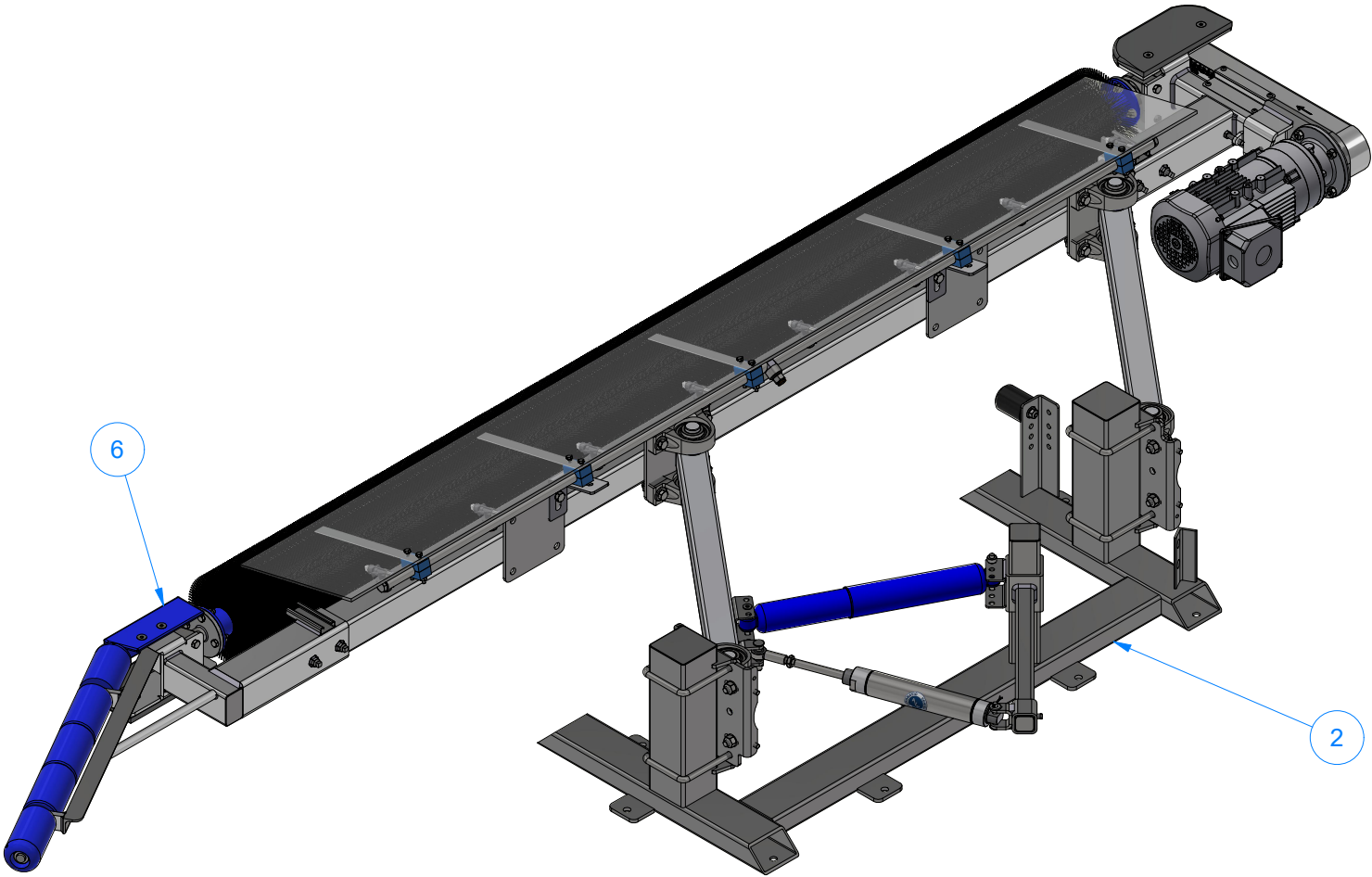
AVW EQUIPMENT CO., INC.
105 S. 9TH AVENUE
MAYWOOD, IL 60153
Tel: 708-343-7738 Fax: 708-343-9065
WWW.AVWEQUIPMENT.COM

- COMPANY PROPRIETARY NOTE -
THIS DRAWING AND ITS DESIGNS ARE PROPERTY OF AVW EQUIPMENT CO. &
IT IS NOT TO BE USED OR REPRODUCED WITHOUT THE PERMISSION FROM AVW CO.

| | | | |
|---|----------|---|---------------|
| DRAWN BY | Ljubomir | CUSTOMER: AVW Equipment | |
| CHECKED BY | | PROJECT: Tire Shine | |
| QTY | | DESCRIPTION: Tire Dressing Applicator [Driver Side] | |
| RELEASE DATE | 8/7/2021 | PART NUMBER: TB4A-EL | REV# |
| DIMENSION ARE IN INCHES & PROVIDED PRIOR TO SURFACE TREATMENTS, UNLESS NOTED. | | SIZE A | EST WEIGHT: |
| | | | SHEET 3 of 45 |

TB4B-EL - Tire Dressing Applicator [Passenger Side]

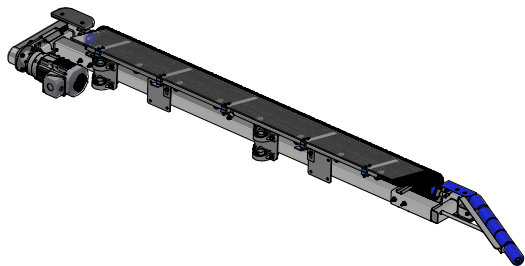
| Parts List | | |
|------------|-----|--|
| ITEM | QTY | DESCRIPTION |
| 2 | 1 | Tire Dressing Frame Assembly [Passenger] |
| 6 | 1 | Tire Brush Assembly [Passenger] |



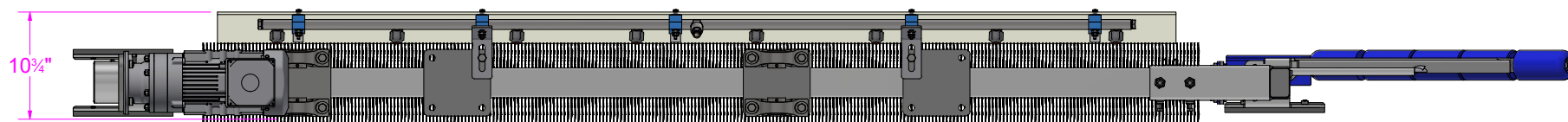
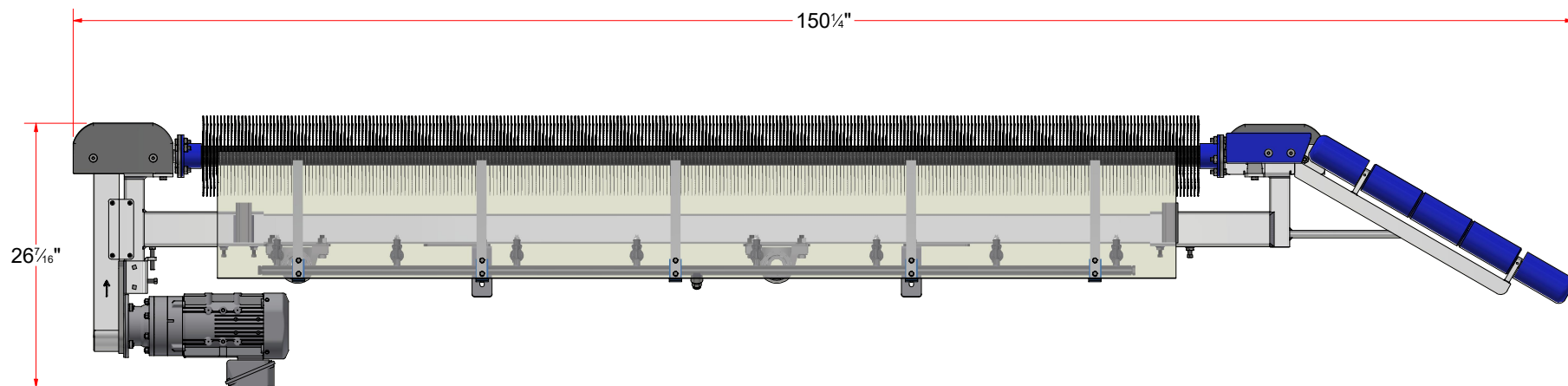
AVW EQUIPMENT CO., INC.
105 S. 9TH AVENUE
MAYWOOD, IL 60153
Tel: 708-343-7738 Fax: 708-343-9065
WWW.AVWEQUIPMENT.COM

- COMPANY PROPRIETARY NOTE -
THIS DRAWING AND ITS DESIGNS ARE PROPERTY OF AVW EQUIPMENT CO. &
IT IS NOT TO BE USED OR REPRODUCED WITHOUT THE PERMISSION FROM AVW CO.

| | | | |
|---|----------|--|---------------|
| DRAWN BY | Ljubomir | CUSTOMER: AVW Equipment | |
| CHECKED BY | | PROJECT: Tire Shine | |
| QTY | | DESCRIPTION: Tire Dressing Applicator [Passenger Side] | |
| RELEASE DATE | 8/7/2021 | PART NUMBER: TB4B-EL | REV# |
| DIMENSION ARE IN INCHES & PROVIDED PRIOR TO SURFACE TREATMENTS, UNLESS NOTED. | | SIZE A | EST WEIGHT: |
| | | | SHEET 4 of 45 |



TB4AA-EL - Tire Brush Assembly [Driver]



AVW EQUIPMENT CO., INC.
105 S. 9TH AVENUE
MAYWOOD, IL 60153
Tel: 708-343-7738 Fax: 708-343-9065
WWW.AVWEQUIPMENT.COM

- COMPANY PROPRIETARY NOTE -

THIS DRAWING AND ITS DESIGNS ARE PROPERTY OF AVW EQUIPMENT CO. & IT IS NOT TO BE USED OR REPRODUCED WITHOUT THE PERMISSION FROM AVW CO.

DRAWN BY

Ljubomir

CUSTOMER: AVW Equipment

CHECKED BY

PROJECT: Tire Shine

QTY

DESCRIPTION: Tire Brush Assembly [Driver]

RELEASE DATE

8/7/2021

PART NUMBER: TB4AA-EL

REV#

DIMENSION ARE IN INCHES & PROVIDED PRIOR TO SURFACE TREATMENTS, UNLESS NOTED.

SIZE
A

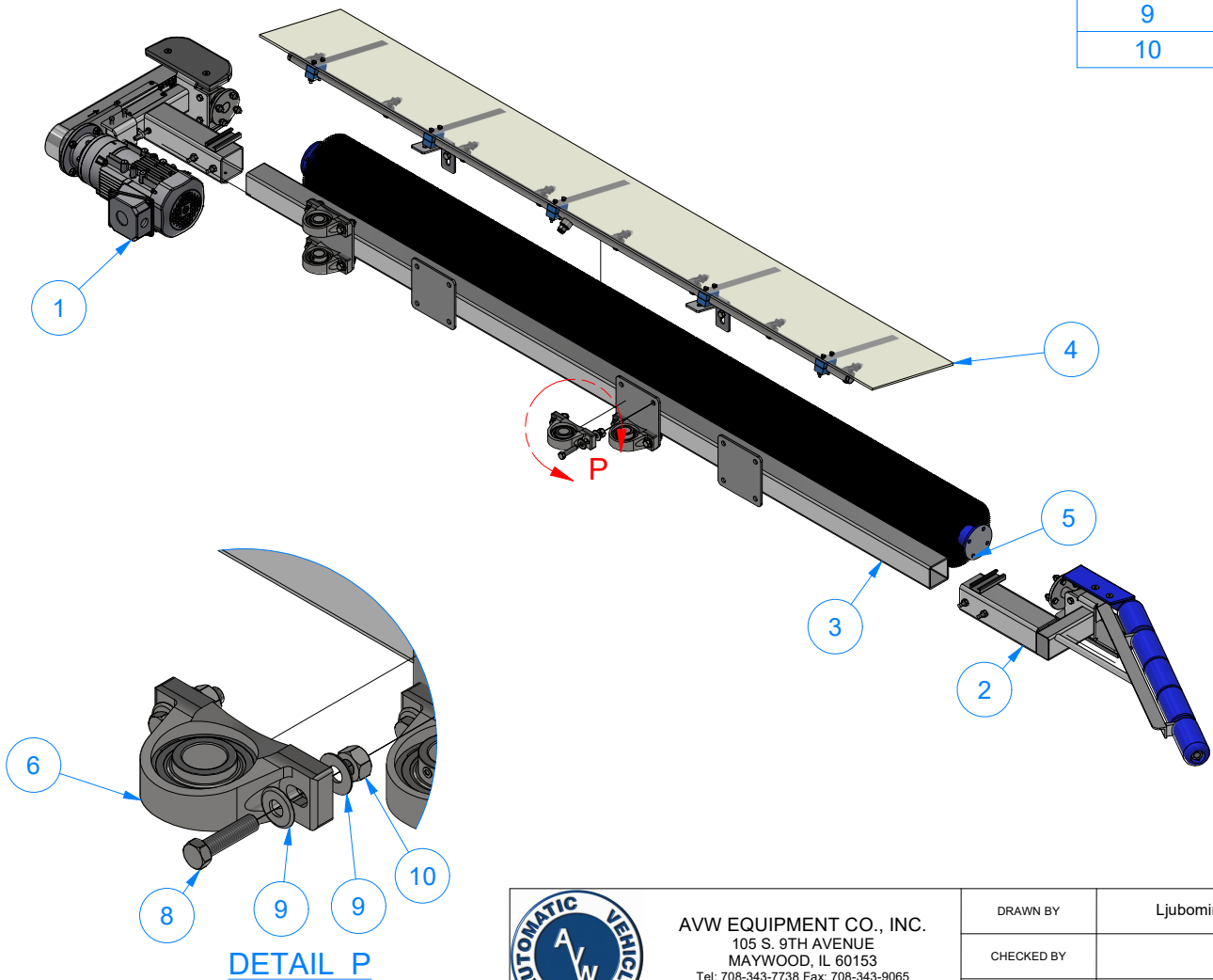
EST WEIGHT:

SHEET 5 of 45

PATH: L:\Libraries\Productivity\Tire Washer\Tire Shine Assemblies\TB4AA-EL - Tire Brush Assembly [Driver].iam

TB4AA-EL - Tire Brush Assembly [Driver]

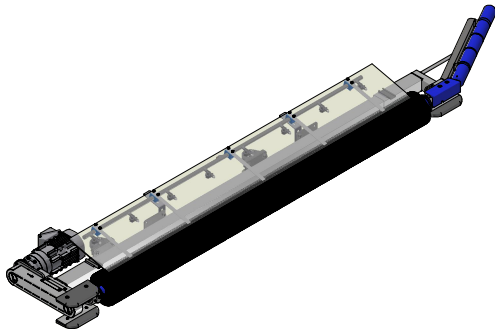
| Parts List | | |
|------------|-----|----------------------------------|
| ITEM | QTY | DESCRIPTION |
| 1 | 1 | BRUSH DRIVE ASSEMBLY [Driver-EL] |
| 2 | 1 | Push Bar Assembly [Driver] |
| 3 | 1 | Brush Support Frame |
| 4 | 1 | Manifold Assembly, with Cover |
| 5 | 1 | Tire Shine, Brush Set Assembly |
| 6 | 4 | 1-1/4" Pillow Block |
| 8 | 8 | 1/2"-13 x 2" L Hex Screw |
| 9 | 16 | 1/2" Flat Washer |
| 10 | 8 | 1/2-13 Hex Nut |



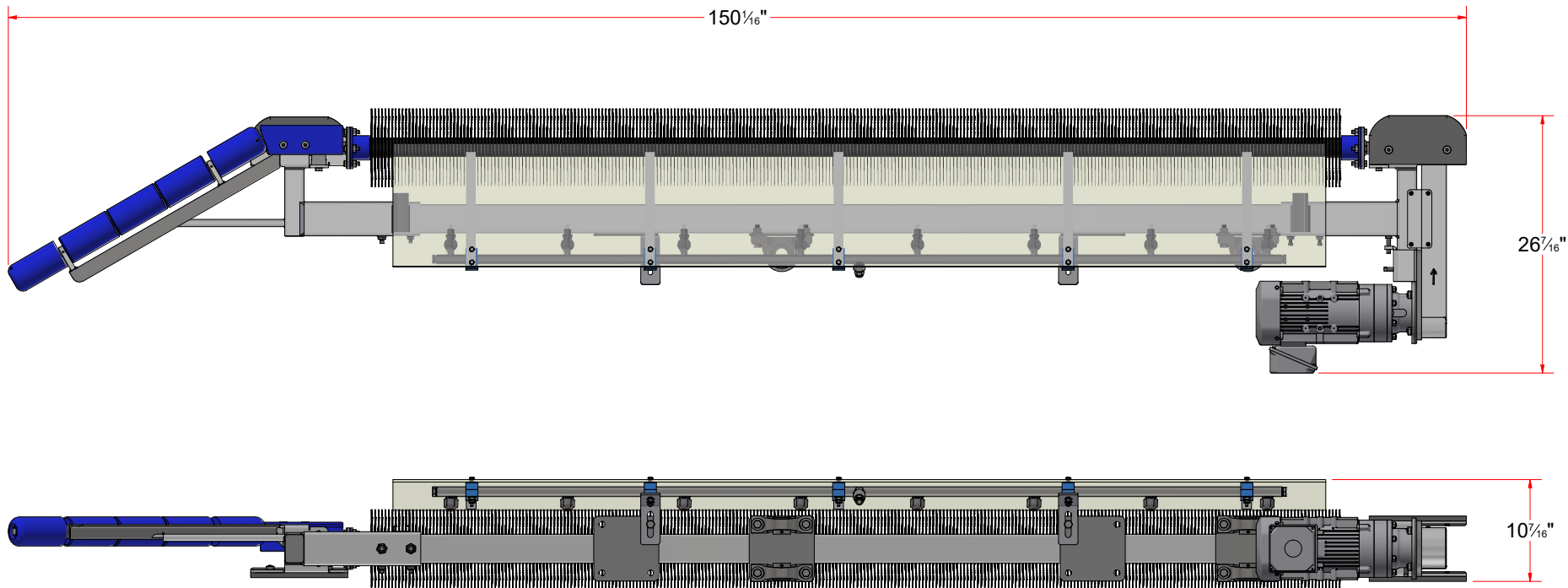
AVW EQUIPMENT CO., INC.
105 S. 9TH AVENUE
MAYWOOD, IL 60153
Tel: 708-343-7738 Fax: 708-343-9065
WWW.AVWEQUIPMENT.COM

- COMPANY PROPRIETARY NOTE -
THIS DRAWING AND ITS DESIGNS ARE PROPERTY OF AVW EQUIPMENT CO. &
IT IS NOT TO BE USED OR REPRODUCED WITHOUT THE PERMISSION FROM AVW CO.

| | | | |
|---|----------|---|---------------|
| DRAWN BY | Ljubomir | CUSTOMER: AVW Equipment | |
| CHECKED BY | | PROJECT: Tire Shine | |
| QTY | | DESCRIPTION: Tire Brush Assembly [Driver] | |
| RELEASE DATE | 8/7/2021 | PART NUMBER: TB4AA-EL | REV# |
| DIMENSION ARE IN INCHES & PROVIDED PRIOR TO SURFACE TREATMENTS, UNLESS NOTED. | | SIZE A | EST WEIGHT: |
| | | | SHEET 6 of 45 |



TB4BA-EL - Tire Brush Assembly [Passenger]



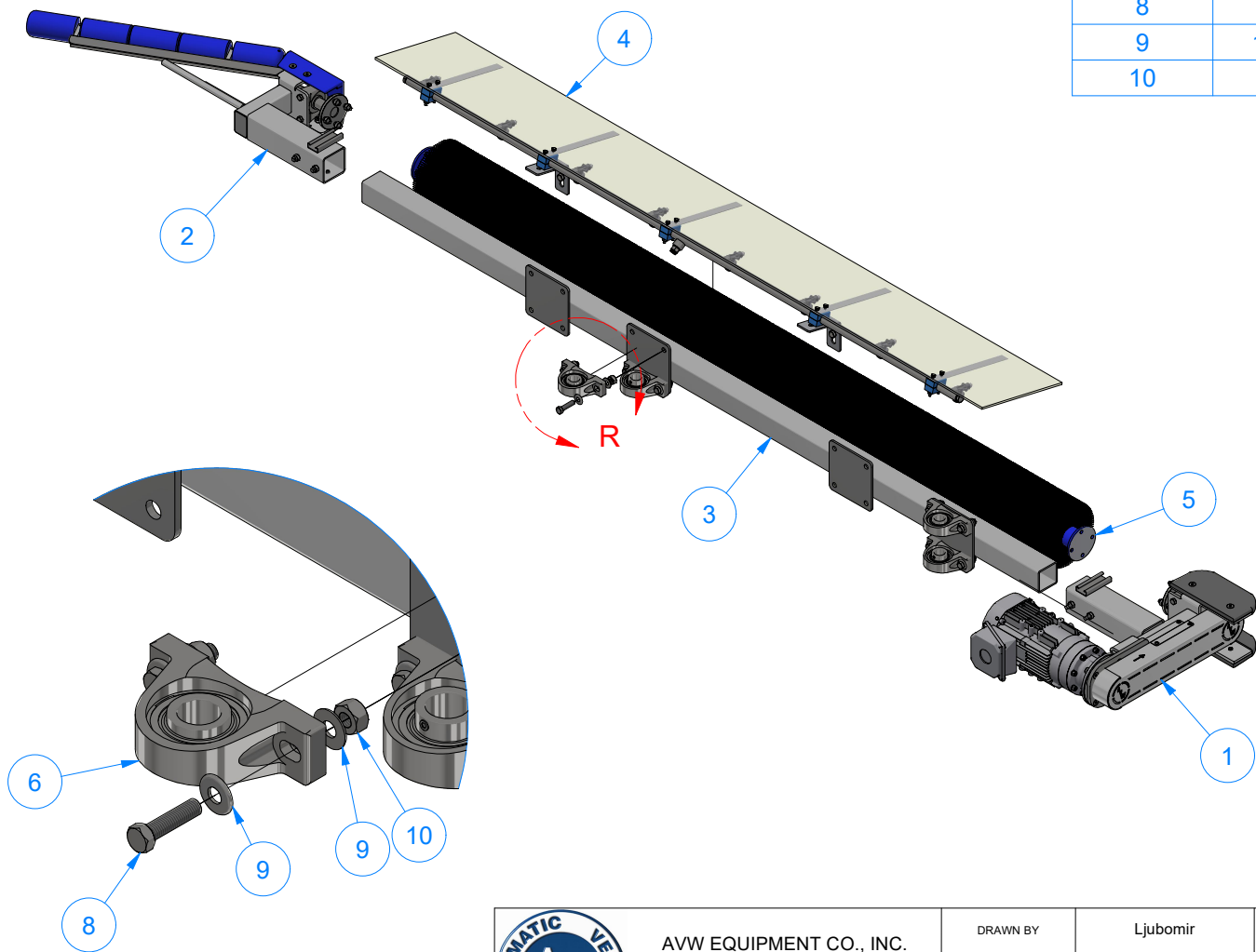
AVW EQUIPMENT CO., INC.
105 S. 9TH AVENUE
MAYWOOD, IL 60153
Tel: 708-343-7738 Fax: 708-343-9065
WWW.AVWEQUIPMENT.COM

- COMPANY PROPRIETARY NOTE -
THIS DRAWING AND ITS DESIGNS ARE PROPERTY OF AVW EQUIPMENT CO. &
IT IS NOT TO BE USED OR REPRODUCED WITHOUT THE PERMISSION FROM AVW CO.

| | | | |
|---|----------|--|---------------|
| DRAWN BY | Ljubomir | CUSTOMER: AVW Equipment | |
| CHECKED BY | | PROJECT: Tire Shine | |
| QTY | | DESCRIPTION: Tire Brush Assembly [Passenger] | |
| RELEASE DATE | 8/7/2021 | PART NUMBER: TB4BA-EL | REV# |
| DIMENSION ARE IN INCHES & PROVIDED PRIOR TO SURFACE TREATMENTS, UNLESS NOTED. | | SIZE A | EST WEIGHT: |
| | | | SHEET 7 of 45 |

PATH:L:\Libraries\Productivity\Tire Washer\Tire Shine Assemblies\TB4BA-EL - Tire Brush Assembly [Passenger].iam

TB4BA-EL - Tire Brush Assembly [Passenger]



DETAIL R

| Parts List | | |
|------------|-----|---------------------------------------|
| ITEM | QTY | DESCRIPTION |
| 1 | 1 | Brush Drive Assembly [Passenger - EL] |
| 2 | 1 | Passenger Push Bar Assembly |
| 3 | 1 | Brush Support Frame |
| 4 | 1 | Manifold Assembly, with Cover |
| 5 | 1 | Tire Shine, Brush Set Assembly |
| 6 | 4 | 1-1/4" Pillow Block |
| 8 | 8 | 1/2"-13 x 2" L Hex Screw |
| 9 | 16 | 1/2" Flat Washer |
| 10 | 8 | 1/2-13 Hex Nut |

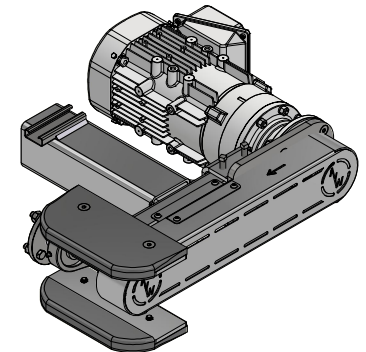
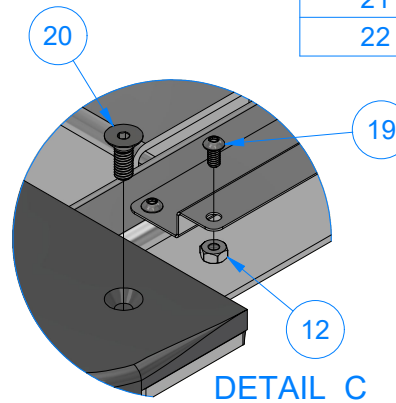
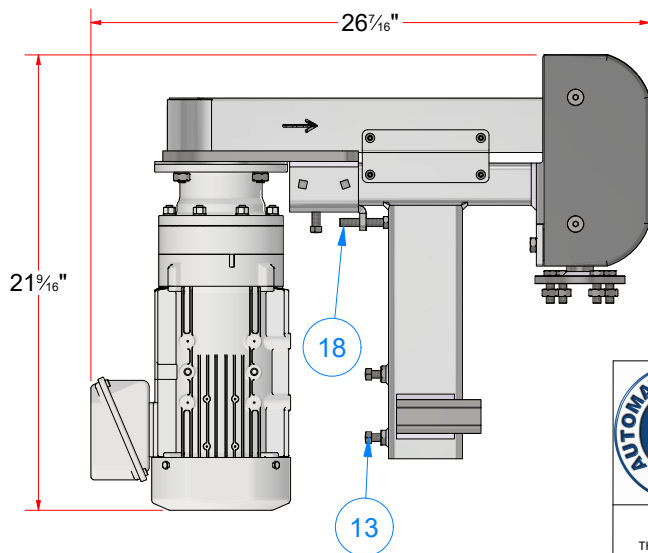
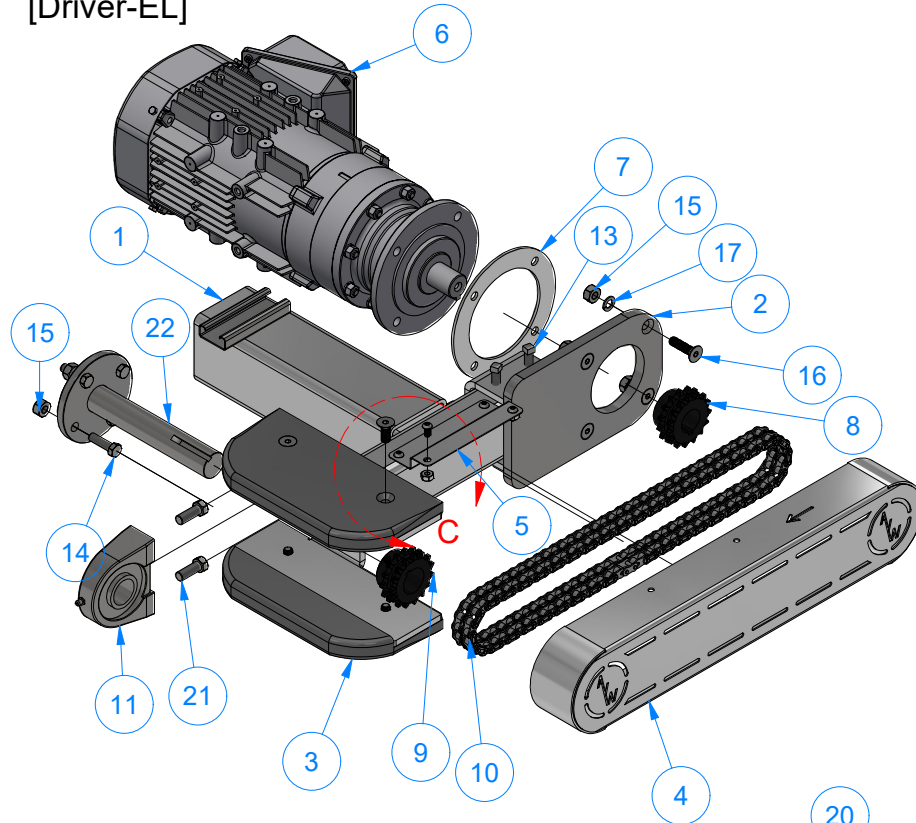


AVW EQUIPMENT CO., INC.
105 S. 9TH AVENUE
MAYWOOD, IL 60153
Tel: 708-343-7738 Fax: 708-343-9065
WWW.AVWEQUIPMENT.COM

- COMPANY PROPRIETARY NOTE -
THIS DRAWING AND ITS DESIGNS ARE PROPERTY OF AVW EQUIPMENT CO. &
IT IS NOT TO BE USED OR REPRODUCED WITHOUT THE PERMISSION FROM AVW CO.

| | | | |
|---|----------|--|---------------|
| DRAWN BY | Ljubomir | CUSTOMER: AVW Equipment | |
| CHECKED BY | | PROJECT: Tire Shine | |
| QTY | | DESCRIPTION: Tire Brush Assembly [Passenger] | |
| RELEASE DATE | 8/7/2021 | PART NUMBER: TB4BA-EL | REV# |
| DIMENSION ARE IN INCHES & PROVIDED PRIOR TO SURFACE TREATMENTS, UNLESS NOTED. | | SIZE A | EST WEIGHT: |
| | | | SHEET 8 of 45 |

TB3AAB-EL - BRUSH DRIVE ASSEMBLY [Driver-EL]



Parts List

| ITEM | QTY | DESCRIPTION |
|------|-----|---|
| 1 | 1 | Base Frame for Brush Drive Assembly [Driver - EL] |
| 2 | 1 | Motor Mount Plate with Sleeve |
| 3 | 2 | Bumper Plate 10" |
| 4 | 1 | Chain Cover [Driver - EL] |
| 5 | 1 | Support Bracket For Chain Guard |
| 6 | 1 | Sumitomo Gearmotor 1 1/8" Shaft |
| 7 | 1 | SS Plate #10Gax 6 1/4" OD |
| 8 | 1 | Double 15 Tooth Sprocket, for 1-1_8in Shaft |
| 9 | 1 | Double 15 Tooth Sprocket, for 1-1_4in Shaft |
| 10 | 1 | Double Tire Shine Chain |
| 11 | 1 | Tapped Base Bearing 1-1/4" |
| 12 | 2 | 1/4"-20 Hex Nut |
| 13 | 7 | SQUARE BOLT - 3/8"-16 x 3/4" L |
| 14 | 4 | 3/8" - 16 x 1 1/4" UNC Hex Screw |
| 15 | 8 | 3/8"-16 18-8ss Heavy Hex Nut |
| 16 | 4 | Flat Head Screw 3/16"-16x1-1/2" |
| 17 | 4 | 3/8" Split Lock Washer |
| 18 | 1 | 3/8" - 16 x 2" UNC Hex Screw |
| 19 | 4 | Button Head Cap Screw 1/4-20 x 1/2" LG. |
| 20 | 4 | 3/8"-16 UNC x 1" LG. Flat Head Cap Screw |
| 21 | 2 | 7/16" - 14 x 1.13" UNC Hex Screw |
| 22 | 1 | Stub Shaft 1 1/4" x 7" LG |



AVW EQUIPMENT CO., INC.
105 S. 9TH AVENUE
MAYWOOD, IL 60153
Tel: 708-343-7738 Fax: 708-343-9065
WWW.AVWEQUIPMENT.COM

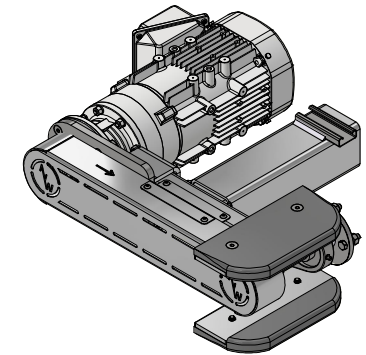
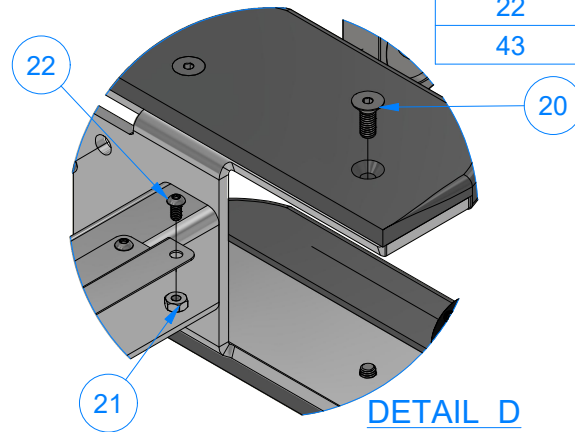
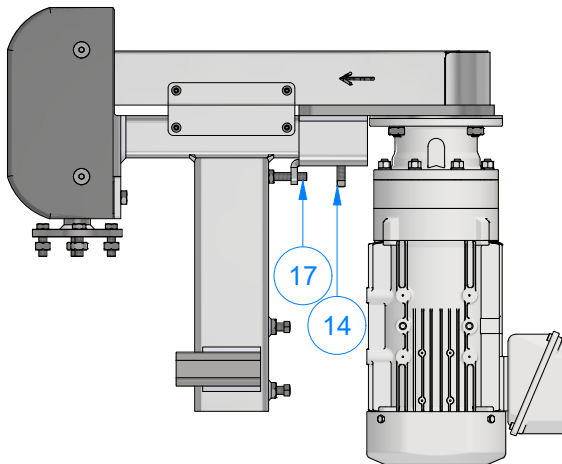
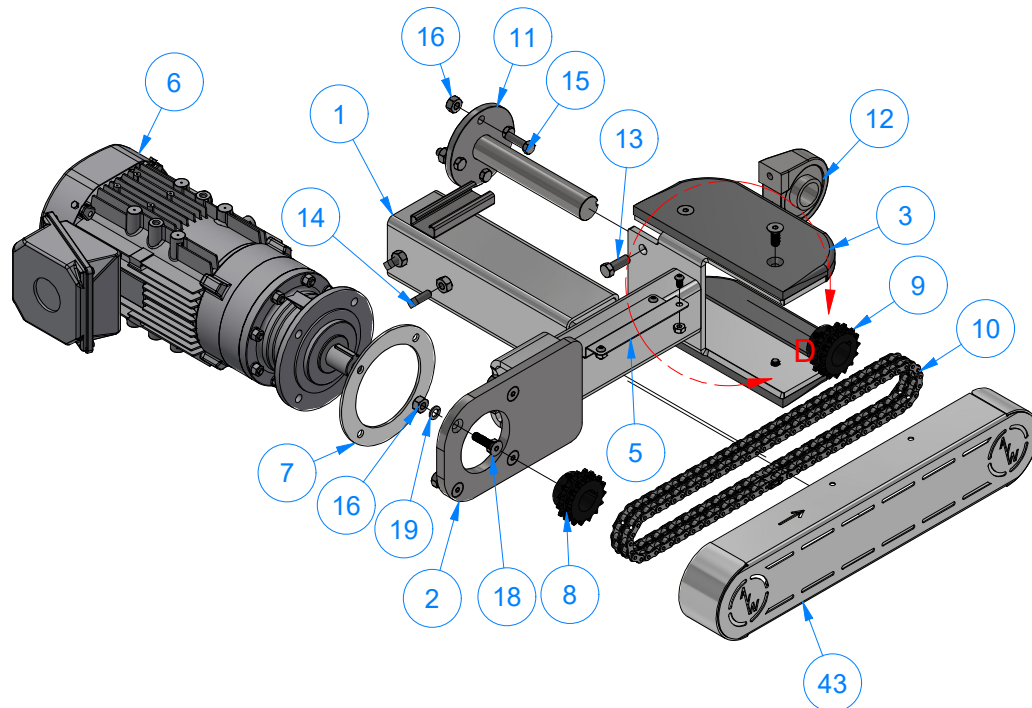
- COMPANY PROPRIETARY NOTE -

THIS DRAWING AND ITS DESIGNS ARE PROPERTY OF AVW EQUIPMENT CO. & IT IS NOT TO BE USED OR REPRODUCED WITHOUT THE PERMISSION FROM AVW CO.

| | | | |
|---|----------|---|---------------|
| DRAWN BY | Ljubomir | CUSTOMER: AVW Equipment | |
| CHECKED BY | | PROJECT: Tire Shine | |
| QTY | | DESCRIPTION: BRUSH DRIVE ASSEMBLY [Driver-EL] | |
| RELEASE DATE | 8/7/2021 | PART NUMBER: TB3AAB-EL | REV# |
| DIMENSION ARE IN INCHES & PROVIDED PRIOR TO SURFACE TREATMENTS, UNLESS NOTED. | | SIZE A | EST WEIGHT: |
| | | | SHEET 9 of 45 |

PATH: L:\Libraries\Productivity\Tire Washer\Brush Drive Assembly\Electric\TB3AAB-EL - Brush Drive Assembly [Driver - EL].iam

TB3BAB-EL - Brush Drive Assembly [Passenger - EL]



Parts List

| ITEM | QTY | DESCRIPTION |
|------|-----|--|
| 1 | 1 | Base Frame for Brush Drive Assembly [Passenger - EL] |
| 2 | 1 | Motor Mount Plate with Sleeve |
| 3 | 2 | Bumper Plate 10" |
| 5 | 1 | Support Bracket For Chain Guard |
| 6 | 1 | Sumitomo Gearmotor 1 1/8" Shaft |
| 7 | 1 | SS Plate #10Gax 6 1/4" OD |
| 8 | 1 | Double 15 Tooth Sprocket, for 1-1_8in Shaft |
| 9 | 1 | Double 15 Tooth Sprocket, for 1-1_4in Shaft |
| 10 | 1 | Double Tire Shine Chain |
| 11 | 1 | Stub Shaft 1 1/4" x 7" LG |
| 12 | 1 | Tapped Base Bearing 1-1/4" |
| 13 | 2 | 7/16" - 14 x 1.13" UNC Hex Screw |
| 14 | 7 | SQUARE BOLT - 3/8"-16 x 3/4" L |
| 15 | 4 | 3/8" - 16 x 1 1/4" UNC Hex Screw |
| 16 | 8 | 3/8"-16 18-8ss Heavy Hex Nut |
| 17 | 1 | 3/8" - 16 UNC x 1 1/2" Hex Screw |
| 18 | 4 | Flat Head Screw 3/16"-16x1-1/2" |
| 19 | 4 | 3/8" Split Lock Washer |
| 20 | 4 | 3/8"-16 UNC x 1" LG. Flat Head Cap Screw |
| 21 | 2 | 1/4"-20 Hex Nut |
| 22 | 4 | Button Head Cap Screw 1/4-20 x 1/2" LG. |
| 43 | 1 | Chain Cover [Passenger - EL] |



AVW EQUIPMENT CO., INC.
105 S. 9TH AVENUE
MAYWOOD, IL 60153
Tel: 708-343-7738 Fax: 708-343-9065
WWW.AVWEQUIPMENT.COM

- COMPANY PROPRIETARY NOTE -

THIS DRAWING AND ITS DESIGNS ARE PROPERTY OF AVW EQUIPMENT CO. & IT IS NOT TO BE USED OR REPRODUCED WITHOUT THE PERMISSION FROM AVW CO.

DRAWN BY

Ljubomir

CUSTOMER: AVW Equipment

CHECKED BY

PROJECT: Tire Shine

QTY

DESCRIPTION: Brush Drive Assembly [Passenger - EL]

RELEASE DATE

8/7/2021

PART NUMBER: TB3BAB-EL

REV#

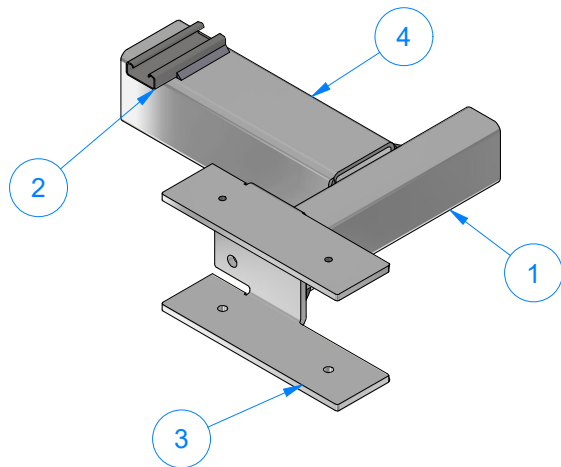
DIMENSION ARE IN INCHES & PROVIDED PRIOR TO SURFACE TREATMENTS, UNLESS NOTED.

SIZE
A

EST WEIGHT:

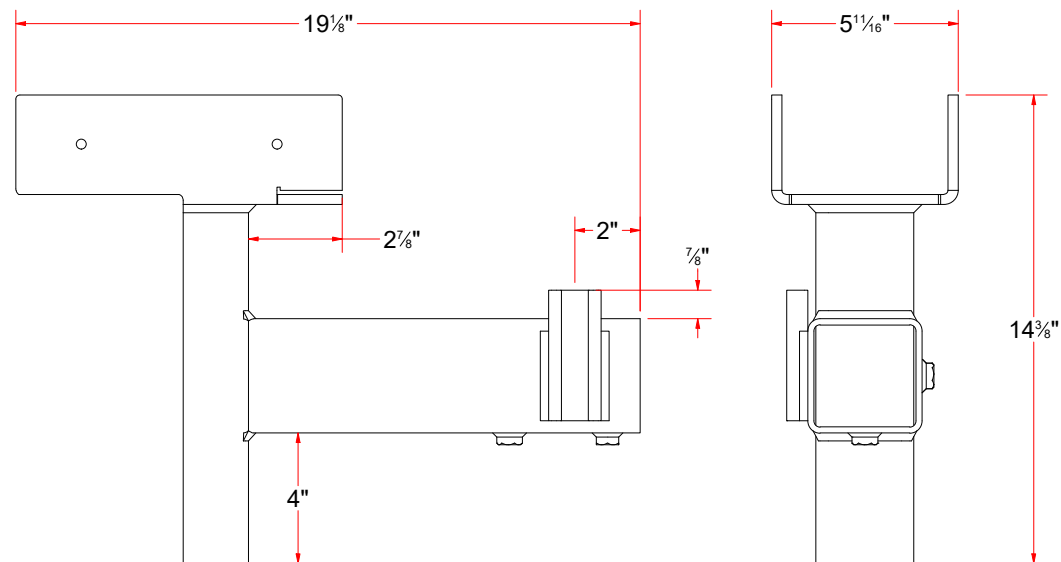
SHEET 10 of 45

PATH:L:\Libraries\Productivity\Tire Washer\Brush Drive Assembly\Electric\TB3BAB-EL - Brush Drive Assembly [Passenger - EL].iam



| Parts List | | |
|------------|-----|-------------------------------------|
| ITEM | QTY | DESCRIPTION |
| 1 | 1 | Rect. Tube #7Ga x 2" x 3" x 11" LG. |
| 2 | 1 | Unistrut 1/2" x 1-1/2" x 4" |
| 3 | 1 | Plate for the Base Frame [Driver] |
| 4 | 1 | Sq. Tub. Assem. 3-1/2" x 12" |

TB3AABA-EL - Base Frame for Brush Drive Assembly [Driver - EL]



AVW EQUIPMENT CO., INC.
105 S. 9TH AVENUE
MAYWOOD, IL 60153
Tel: 708-343-7738 Fax: 708-343-9065
WWW.AVWEQUIPMENT.COM

- COMPANY PROPRIETARY NOTE -

THIS DRAWING AND ITS DESIGNS ARE PROPERTY OF AVW EQUIPMENT CO. & IT IS NOT TO BE USED OR REPRODUCED WITHOUT THE PERMISSION FROM AVW CO.

DRAWN BY

Ljubomir

CUSTOMER: AVW Equipment

CHECKED BY

PROJECT: Tire Shine

QTY

DESCRIPTION: Base Frame for Brush Drive Assembly [Driver - EL]

RELEASE DATE

8/7/2021

PART NUMBER: TB3AABA-EL

REV#

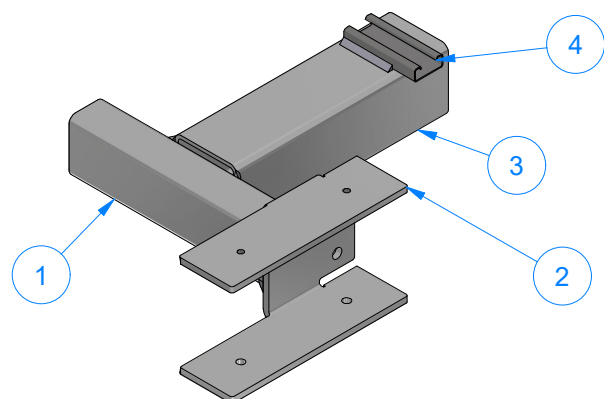
DIMENSION ARE IN INCHES & PROVIDED PRIOR TO SURFACE TREATMENTS, UNLESS NOTED.

SIZE
A

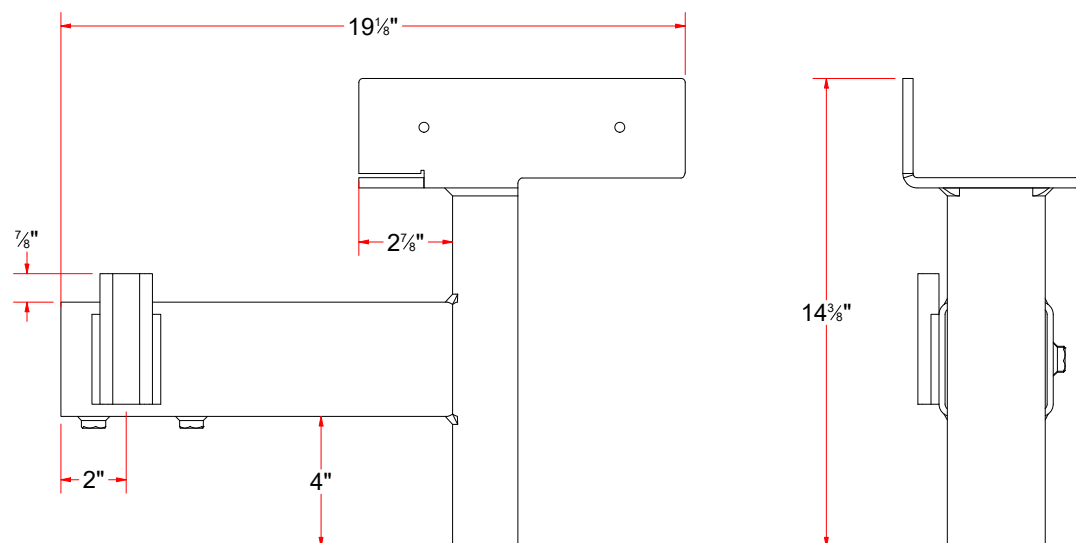
EST WEIGHT:

SHEET 11 of 45

| Parts List | | |
|------------|-----|--------------------------------------|
| ITEM | QTY | DESCRIPTION |
| 1 | 1 | Rect. Tube #7Ga x 2" x 3" x 11" LG. |
| 2 | 1 | Plate for the Base Frame [Passenger] |
| 3 | 1 | Sq. Tub. Assem. 3-1/2" x 12" |
| 4 | 1 | Unistrut 1/2" x 1-1/2" x 4" |



TB3BABA-EL - Base Frame for Brush Drive Assembly [Passenger - EL]



AVW EQUIPMENT CO., INC.
105 S. 9TH AVENUE
MAYWOOD, IL 60153
Tel: 708-343-7738 Fax: 708-343-9065
WWW.AVWEQUIPMENT.COM

- COMPANY PROPRIETARY NOTE -

THIS DRAWING AND ITS DESIGNS ARE PROPERTY OF AVW EQUIPMENT CO. & IT IS NOT TO BE USED OR REPRODUCED WITHOUT THE PERMISSION FROM AVW CO.

DRAWN BY

Ljubomir

CUSTOMER: AVW Equipment

CHECKED BY

PROJECT: Tire Shine

QTY

DESCRIPTION: Base Frame for Brush Drive Assembly [Passenger - EL]

RELEASE DATE

8/7/2021

PART NUMBER: TB3BABA-EL

REV#

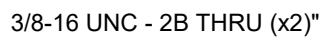
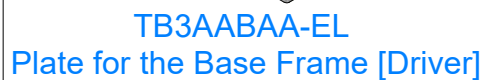
DIMENSION ARE IN INCHES & PROVIDED PRIOR TO SURFACE TREATMENTS, UNLESS NOTED.

SIZE
A

EST WEIGHT:

SHEET 12 of 45

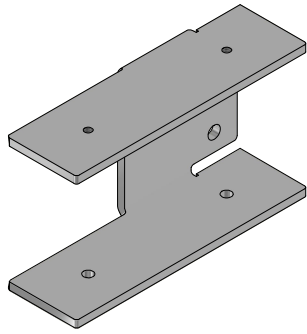
PATH:L:\Libraries\Productivity\Tire Washer\Brush Drive Assembly\Electric\Parts\TB3BABA-EL - Base Frame for Brush Drive Assembly [Passenger - EL].iam



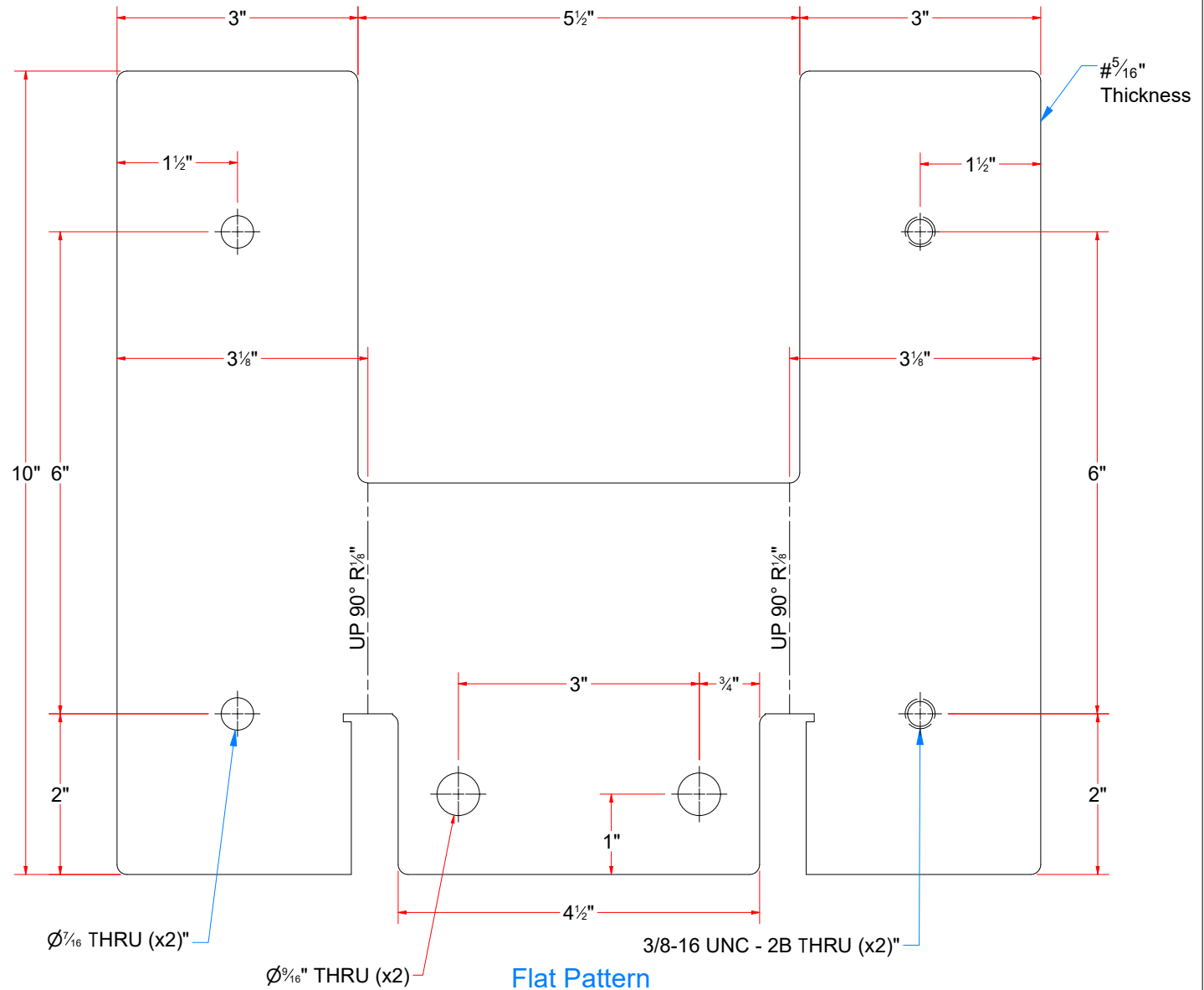
THIS DRAWING AND ITS DESIGNS ARE PROPERTY OF AVW EQUIPMENT CO. & IT IS NOT TO BE USED OR REPRODUCED WITHOUT THE PERMISSION FROM AVW CO.

SHEET 13 of 45

PATH:L:\Libraries\Productivity\Tire Washer\Brush Drive Assembly\Electric\Parts\TB3AABAA-EL - Plate for the Base Frame [Driver][NEW].ipt



TB3BABAA-EL
Plate for the Base Frame [Passenger]



AVW EQUIPMENT CO., INC.
105 S. 9TH AVENUE
MAYWOOD, IL 60153
Tel: 708-343-7738 Fax: 708-343-9065
WWW.AVWEQUIPMENT.COM

- COMPANY PROPRIETARY NOTE -

THIS DRAWING AND ITS DESIGNS ARE PROPERTY OF AVW EQUIPMENT CO. & IT IS NOT TO BE USED OR REPRODUCED WITHOUT THE PERMISSION FROM AVW CO.

DRAWN BY

Ljubomir

CUSTOMER: AVW Equipment

CHECKED BY

PROJECT: Tire Shine

QTY

DESCRIPTION: Plate for the Base Frame [Passenger]

RELEASE DATE

8/7/2021

PART NUMBER: TB3BABAA-EL

REV#

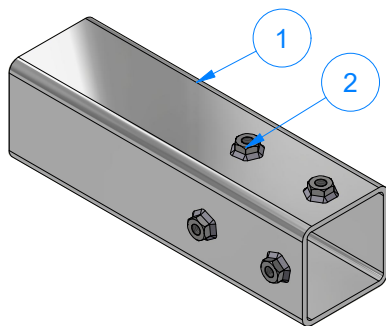
DIMENSION ARE IN INCHES & PROVIDED PRIOR TO SURFACE TREATMENTS, UNLESS NOTED.

SIZE A

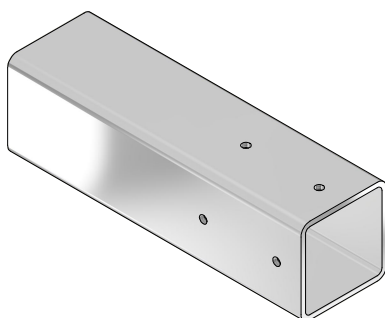
EST WEIGHT:

SHEET 14 of 45

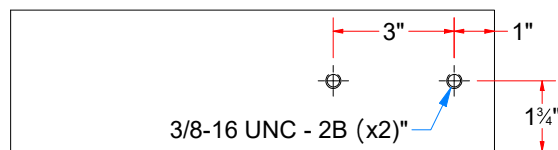
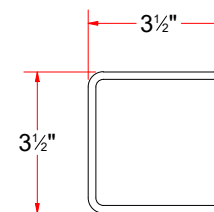
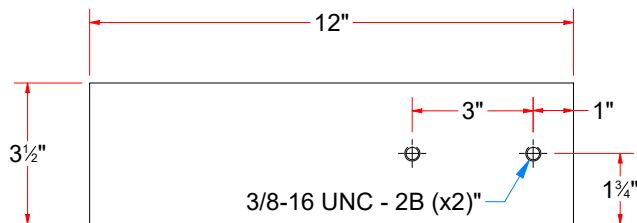
PATH: L:\Libraries\Productivity\Tire Washer\Brush Drive Assembly\Electric\Parts\TB3BABAA-EL - Plate for the Base Frame [Passenger][NEW].ipt



TB3AAAAA - Sq. Tub. Assem. 3-1/2" x 12"



TB3AAAAA - Sq. Tubing 3 1/2" x 3/16" x 12" LG.



| Parts List | | |
|------------|-----|-------------------------------------|
| ITEM | QTY | DESCRIPTION |
| 1 | 1 | Sq. Tubing 3 1/2" x 3/16" x 12" LG. |
| 2 | 4 | 3/8"-16 18-8ss Heavy Hex Nut |



AVW EQUIPMENT CO., INC.
105 S. 9TH AVENUE
MAYWOOD, IL 60153
Tel: 708-343-7738 Fax: 708-343-9065
WWW.AVWEQUIPMENT.COM

- COMPANY PROPRIETARY NOTE -

THIS DRAWING AND ITS DESIGNS ARE PROPERTY OF AVW EQUIPMENT CO. & IT IS NOT TO BE USED OR REPRODUCED WITHOUT THE PERMISSION FROM AVW CO.

DRAWN BY

Ljubomir

CUSTOMER: AVW Equipment

CHECKED BY

PROJECT: Tire Shine

QTY

DESCRIPTION: Sq. Tub. Assem. 3-1/2" x 12"

RELEASE DATE

8/7/2021

PART NUMBER: TB3AAAAA

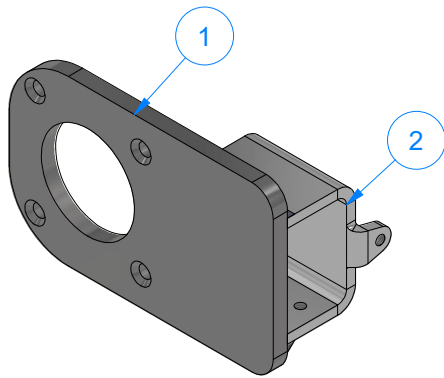
REV#

DIMENSION ARE IN INCHES & PROVIDED PRIOR TO SURFACE TREATMENTS, UNLESS NOTED.

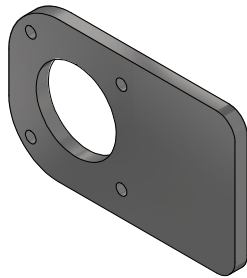
SIZE
A

EST WEIGHT:

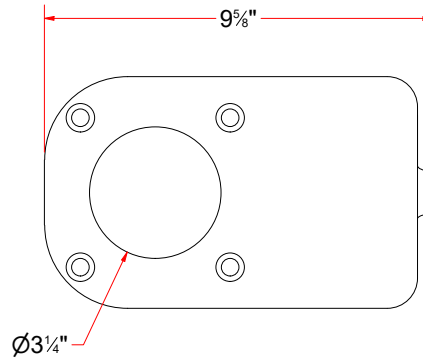
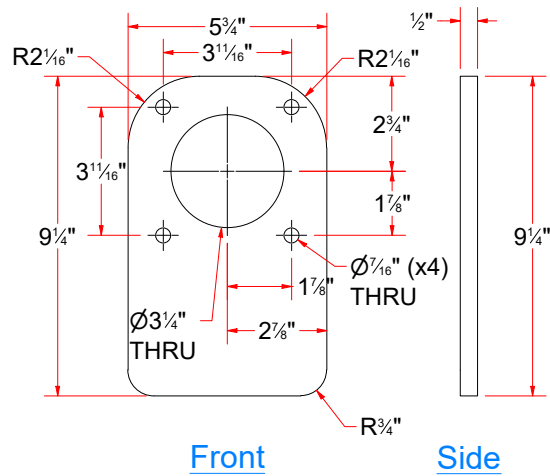
SHEET 15 of 45



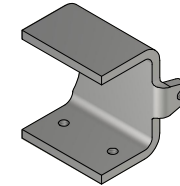
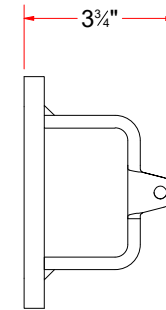
TB3AABB-EL - Motor Mount Plate with Sleeve



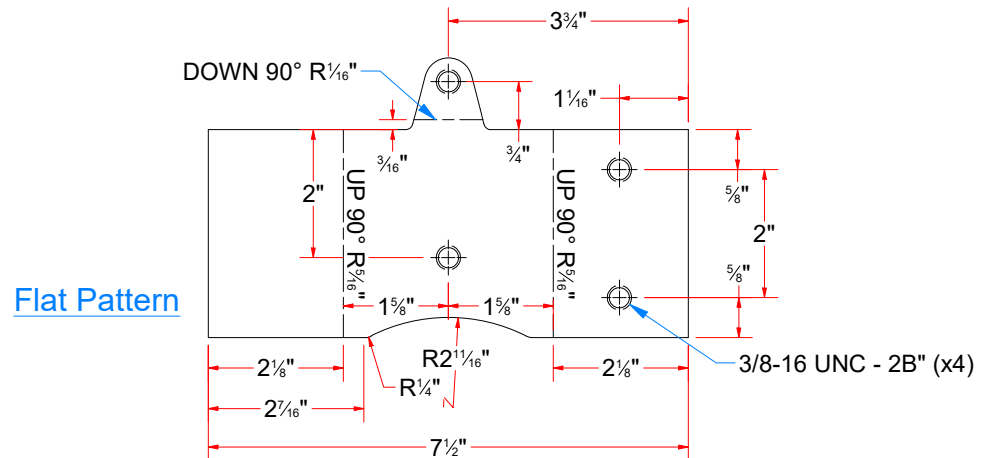
TB3AABBB-EL - Motor Mount Plate



| Parts List | | |
|------------|-----|--|
| ITEM | QTY | DESCRIPTION |
| 1 | 1 | Motor Mount Plate |
| 2 | 1 | Bracket For Motor Mount Plate Assembly |



TB3AABBA-EL - Bracket For Motor Mount Plate Assembly



AVW EQUIPMENT CO., INC.
105 S. 9TH AVENUE
MAYWOOD, IL 60153
Tel: 708-343-7738 Fax: 708-343-9065
WWW.AVWEQUIPMENT.COM

- COMPANY PROPRIETARY NOTE -

THIS DRAWING AND ITS DESIGNS ARE PROPERTY OF AVW EQUIPMENT CO. & IT IS NOT TO BE USED OR REPRODUCED WITHOUT THE PERMISSION FROM AVW CO.

DRAWN BY

Ljubomir

CUSTOMER: AVW Equipment

CHECKED BY

PROJECT: Tire Shine

QTY

DESCRIPTION: Motor Mount Plate with Sleeve

RELEASE DATE

8/7/2021

PART NUMBER: TB3AABB-EL

REV#

DIMENSION ARE IN INCHES & PROVIDED PRIOR TO SURFACE TREATMENTS, UNLESS NOTED.

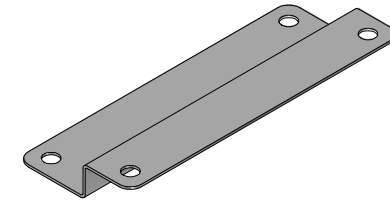
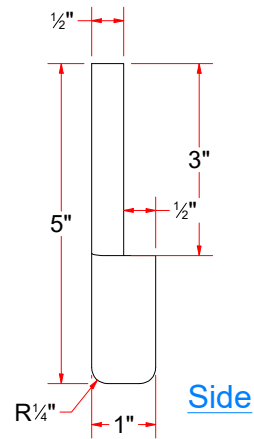
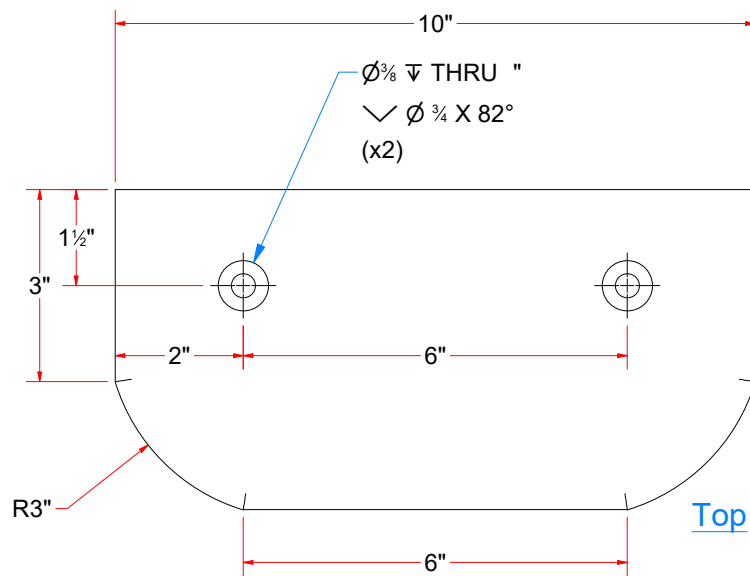
SIZE
A

EST WEIGHT:

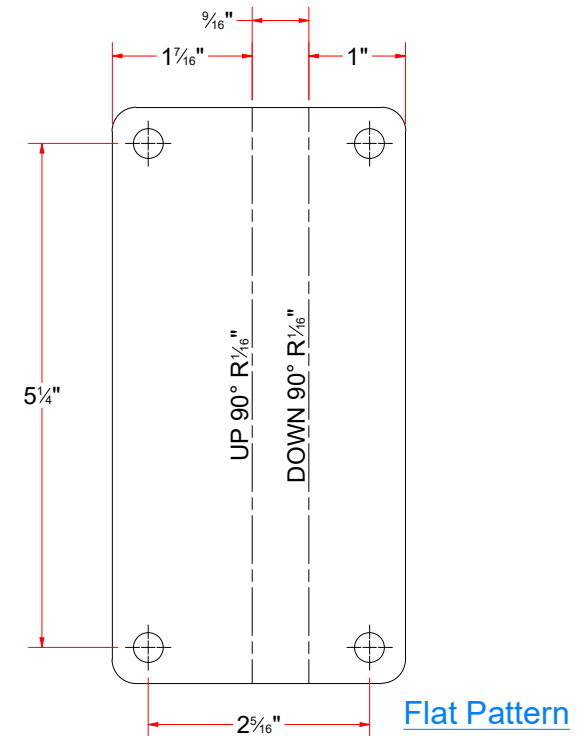
SHEET 16 of 45



TB3AABC-EL - Bumper Plate 10"



TB3AABE-EL - Support Bracket For Chain Guard



AVW EQUIPMENT CO., INC.
105 S. 9TH AVENUE
MAYWOOD, IL 60153
Tel: 708-343-7738 Fax: 708-343-9065
WWW.AVWEQUIPMENT.COM

- COMPANY PROPRIETARY NOTE -

THIS DRAWING AND ITS DESIGNS ARE PROPERTY OF AVW EQUIPMENT CO. &
IT IS NOT TO BE USED OR REPRODUCED WITHOUT THE PERMISSION FROM AVW CO.

DRAWN BY

Ljubomir

CUSTOMER: AVW Equipment

CHECKED BY

PROJECT: Tire Shine

QTY

DESCRIPTION: Bumper Plate 10"

RELEASE
DATE

8/7/2021

PART NUMBER: TB3AABC-EL

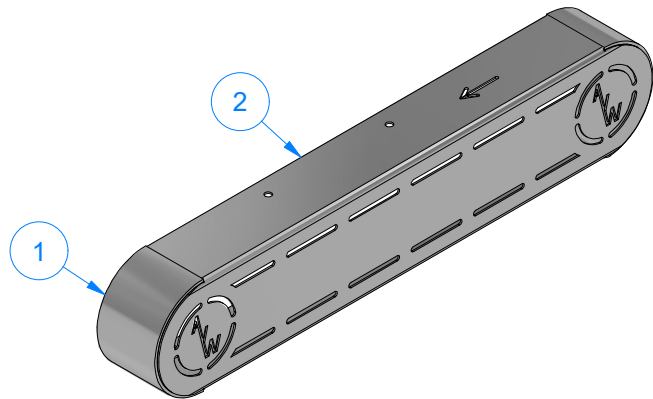
REV#

DIMENSION ARE IN INCHES & PROVIDED PRIOR
TO SURFACE TREATMENTS, UNLESS NOTED.

SIZE
A

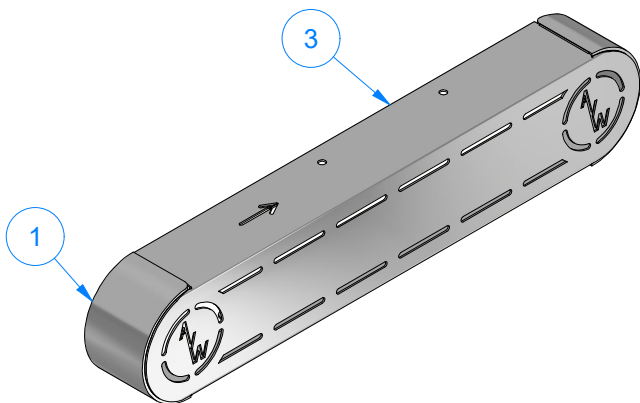
EST WEIGHT:

SHEET 17 of 45




TB3AABD-EL - Chain Cover [Driver - EL]

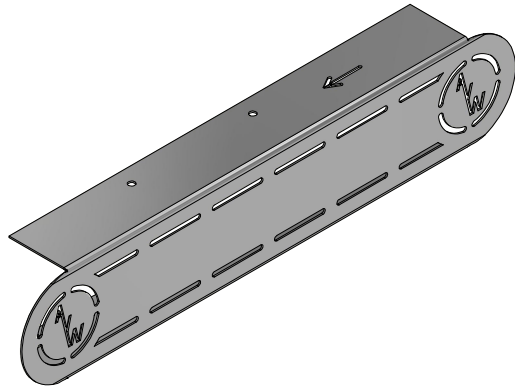
| Parts List | | |
|------------|-----|----------------------------------|
| ITEM | QTY | DESCRIPTION |
| 1 | 2 | Side Plate for Chain Cover |
| 2 | 1 | Chain Cover Front Panel [Driver] |



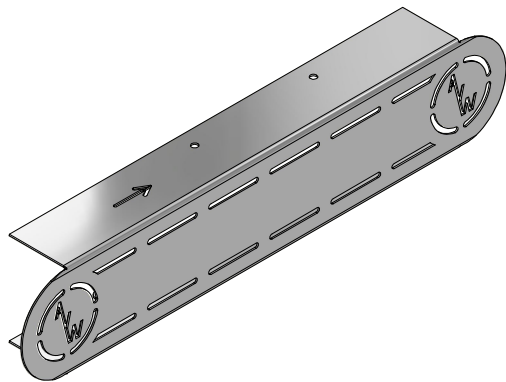
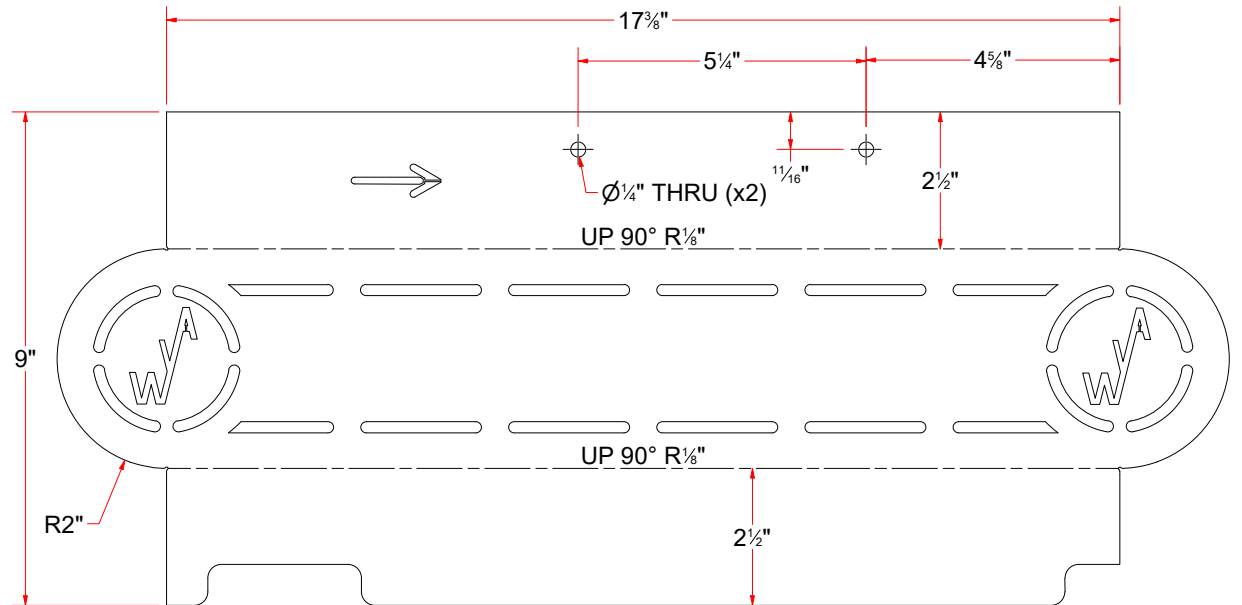
TB3BABD-EL - Chain Cover [Passenger - EL]

| Parts List | | |
|------------|-----|-------------------------------------|
| ITEM | QTY | DESCRIPTION |
| 1 | 2 | Side Plate for Chain Cover |
| 3 | 1 | Chain Cover Front Panel [Passenger] |

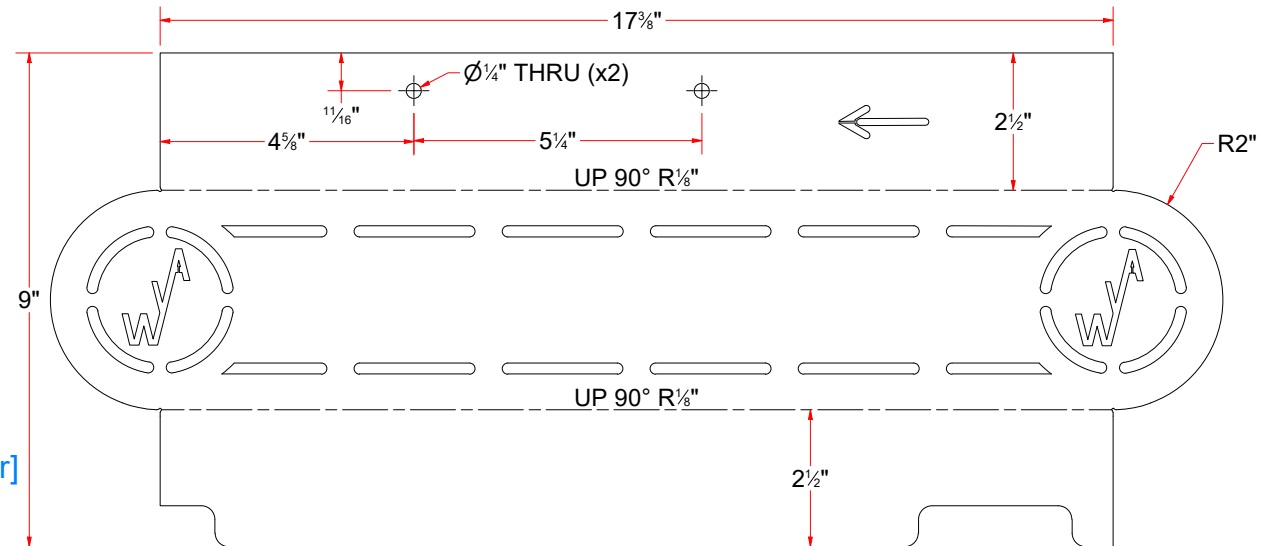
| | | | | | |
|---|---|----------|---|-------------|----------------|
|  <div>AVW EQUIPMENT CO., INC. 105 S. 9TH AVENUE MAYWOOD, IL 60153 Tel: 708-343-7738 Fax: 708-343-9065 WWW.AVWEQUIPMENT.COM</div> | DRAWN BY | Ljubomir | CUSTOMER: AVW Equipment | | |
| | CHECKED BY | | PROJECT: Tire Shine | | |
| | QTY | | DESCRIPTION: Chain Cover [Passenger - EL] | | |
| <div>- COMPANY PROPRIETARY NOTE - THIS DRAWING AND ITS DESIGNS ARE PROPERTY OF AVW EQUIPMENT CO. & IT IS NOT TO BE USED OR REPRODUCED WITHOUT THE PERMISSION FROM AVW CO.</div> | RELEASE DATE | 8/7/2021 | PART NUMBER: TB3BABD-EL | | REV# |
| | DIMENSION ARE IN INCHES & PROVIDED PRIOR TO SURFACE TREATMENTS, UNLESS NOTED. | | SIZE A | EST WEIGHT: | SHEET 18 of 45 |
| PATH:L:\Libraries\Productivity\Tire Washer\Brush Drive Assembly\Electric\Parts\TB3BABD-EL - Chain Cover [Passenger - EL].iam | | | | | |



TB3AABDA-EL - Chain Cover Front Panel [Driver]



TB3BABDA-EL - Chain Cover Front Panel [Passenger]



AVW EQUIPMENT CO., INC.
105 S. 9TH AVENUE
MAYWOOD, IL 60153
Tel: 708-343-7738 Fax: 708-343-9065
WWW.AVWEQUIPMENT.COM

- COMPANY PROPRIETARY NOTE -

THIS DRAWING AND ITS DESIGNS ARE PROPERTY OF AVW EQUIPMENT CO. & IT IS NOT TO BE USED OR REPRODUCED WITHOUT THE PERMISSION FROM AVW CO.

DRAWN BY

Ljubomir

CUSTOMER: AVW Equipment

CHECKED BY

PROJECT: Tire Shine

QTY

DESCRIPTION: Chain Cover Front Panel [Driver]

RELEASE DATE

8/7/2021

PART NUMBER: TB3AABDA-EL

REV#

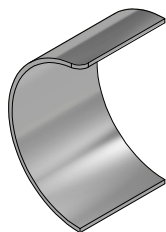
DIMENSION ARE IN INCHES & PROVIDED PRIOR TO SURFACE TREATMENTS, UNLESS NOTED.

SIZE A

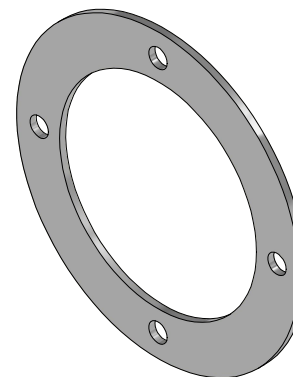
EST WEIGHT:

SHEET 19 of 45

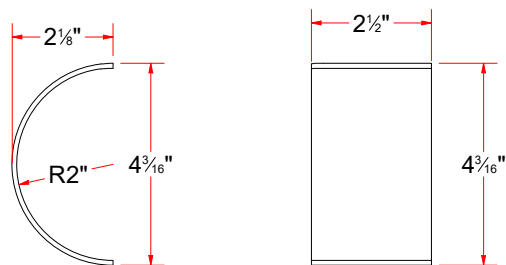
PATH: L:\Libraries\Productivity\Tire Washer\Brush Drive Assembly\Electric\Parts\TB3AABDA-EL - Chain Cover Front Panel [Driver].ipt



TB3AABDB-EL - Side Plate for Chain Cover

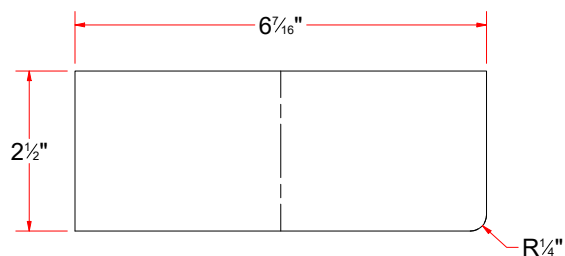


WA10KAA-EL - SS Plate #10Gax 6 1/4" OD

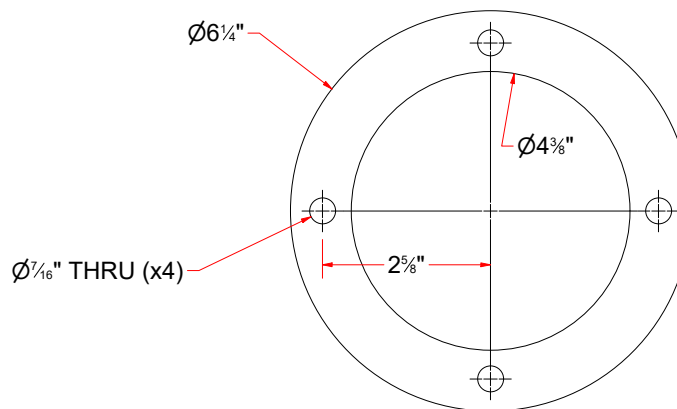


Side

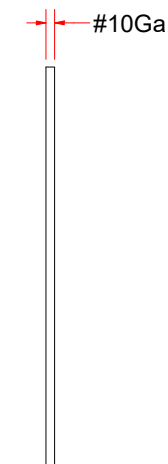
Front



Flat Pattern



Front



Side



AVW EQUIPMENT CO., INC.
105 S. 9TH AVENUE
MAYWOOD, IL 60153
Tel: 708-343-7738 Fax: 708-343-9065
WWW.AVWEQUIPMENT.COM

- COMPANY PROPRIETARY NOTE -

THIS DRAWING AND ITS DESIGNS ARE PROPERTY OF AVW EQUIPMENT CO. & IT IS NOT TO BE USED OR REPRODUCED WITHOUT THE PERMISSION FROM AVW CO.

DRAWN BY

Ljubomir

CUSTOMER: AVW Equipment

CHECKED BY

PROJECT: Tire Shine

QTY

DESCRIPTION: Side Plate for Chain Cover

RELEASE DATE

8/7/2021

PART NUMBER: TB3AABDB-EL

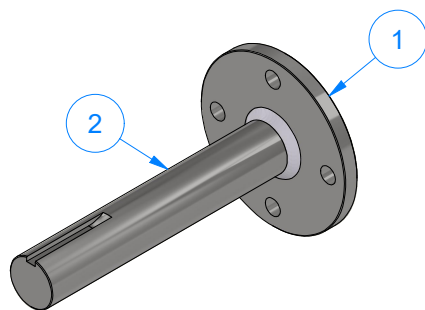
REV#

DIMENSION ARE IN INCHES & PROVIDED PRIOR TO SURFACE TREATMENTS, UNLESS NOTED.

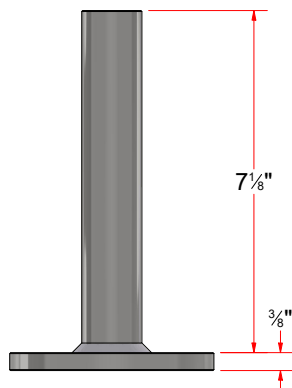
SIZE
A

EST WEIGHT:

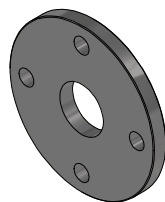
SHEET 20 of 45



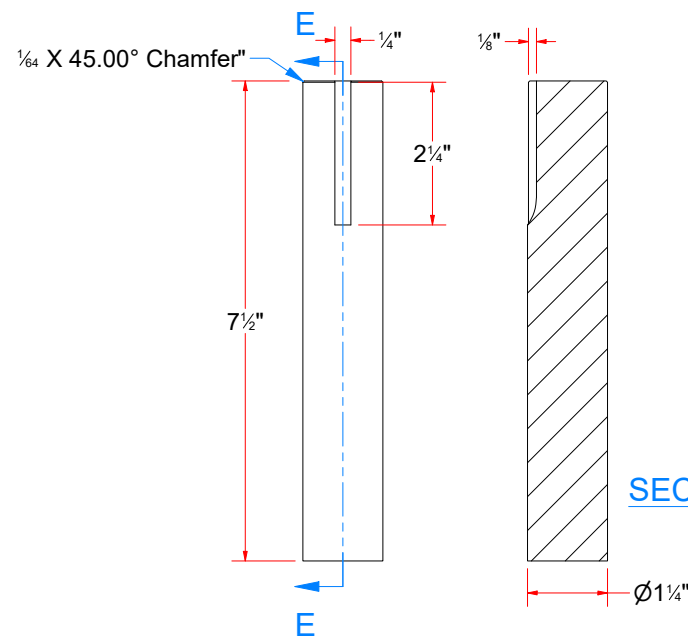
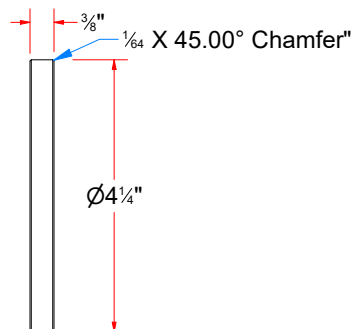
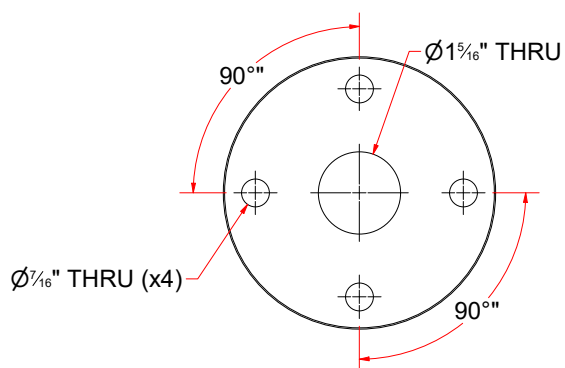
TB3AABF-EL - Stub Shaft 1 1/4" x 8" LG



TB3AABFB-EL - Round Shaft - 1 1/4" OD. x 7 1/2" LG.



TB3AAAEB - Bottom Plate For Stub Shaft (1-1_4in ID)



AVW EQUIPMENT CO., INC.
105 S. 9TH AVENUE
MAYWOOD, IL 60153
Tel: 708-343-7738 Fax: 708-343-9065
WWW.AVWEQUIPMENT.COM

- COMPANY PROPRIETARY NOTE -

THIS DRAWING AND ITS DESIGNS ARE PROPERTY OF AVW EQUIPMENT CO. & IT IS NOT TO BE USED OR REPRODUCED WITHOUT THE PERMISSION FROM AVW CO.

DRAWN BY

Ljubomir

CUSTOMER: AVW Equipment

CHECKED BY

PROJECT: Tire Shine

QTY

DESCRIPTION: Stub Shaft 1 1/4" x 8" LG

RELEASE DATE

8/7/2021

PART NUMBER: TB3AABF-EL

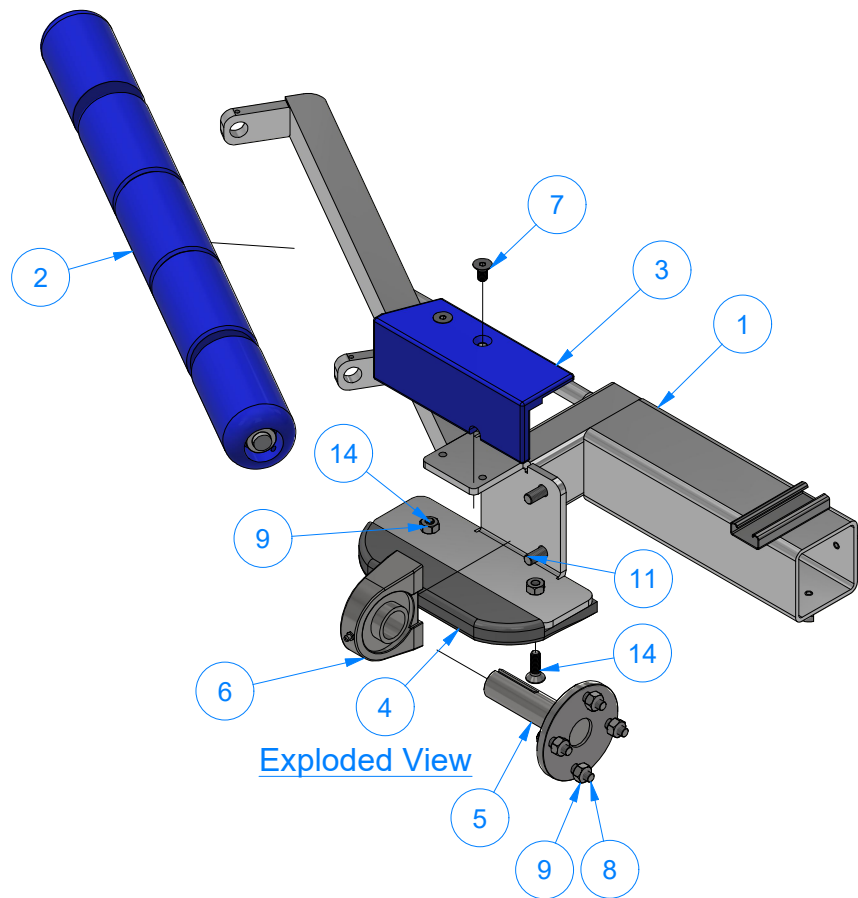
REV#

DIMENSION ARE IN INCHES & PROVIDED PRIOR TO SURFACE TREATMENTS, UNLESS NOTED.

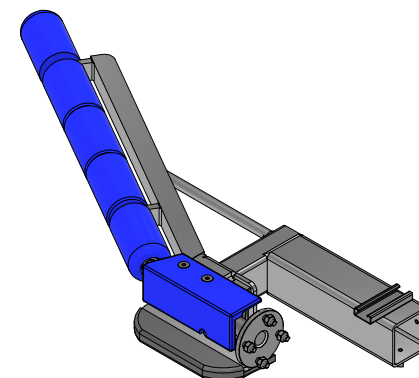
SIZE A

EST WEIGHT:

SHEET 21 of 45



| Parts List | | |
|------------|-----|------------------------------------|
| ITEM | QTY | DESCRIPTION |
| 1 | 1 | Frame For Driver Push Bar Assembly |
| 2 | 1 | Roller Guide Set |
| 3 | 1 | Top Plastic Cover [Driver] |
| 4 | 1 | Bumper Plate 10" |
| 5 | 1 | 4-1/2" Stub Shaft |
| 6 | 1 | Tapped Base Bearing 1-1/4" |
| 7 | 2 | FLAT HEAD SCREW 3/8"-16x3/4" |
| 8 | 4 | 3/8" - 16 x 1 1/4" UNC Hex Screw |
| 9 | 6 | 3/8"-16 18-8ss Heavy Hex Nut |
| 11 | 2 | 7/16" - 14 x 1.13" UNC Hex Screw |
| 14 | 2 | Flat Head Screw 3/8"-16 x 1-1/4" |



**TB3AAA - Push Bar Assembly
[Driver]**



AVW EQUIPMENT CO., INC.
105 S. 9TH AVENUE
MAYWOOD, IL 60153
Tel: 708-343-7738 Fax: 708-343-9065
WWW.AVWEQUIPMENT.COM

- COMPANY PROPRIETARY NOTE -

THIS DRAWING AND ITS DESIGNS ARE PROPERTY OF AVW EQUIPMENT CO. &
IT IS NOT TO BE USED OR REPRODUCED WITHOUT THE PERMISSION FROM AVW CO.

DRAWN BY

Ljubomir

CUSTOMER: AVW Equipment

CHECKED BY

PROJECT: Tire Shine

QTY

DESCRIPTION: Push Bar Assembly [Driver]

RELEASE
DATE

8/7/2021

PART NUMBER: TB3AAA

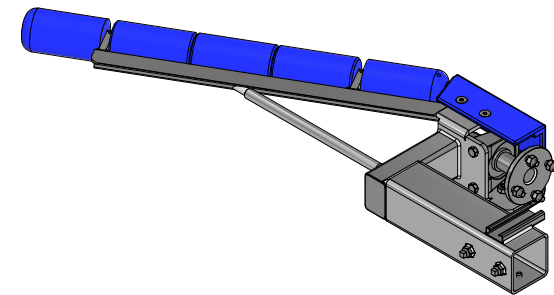
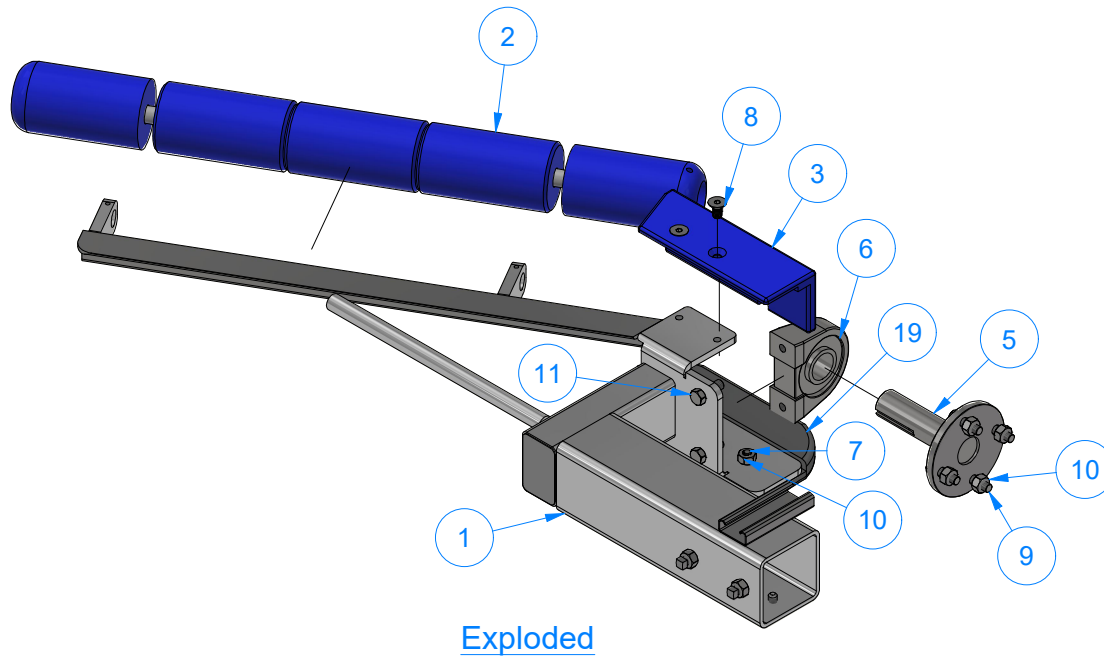
REV#

DIMENSION ARE IN INCHES & PROVIDED PRIOR
TO SURFACE TREATMENTS, UNLESS NOTED.

SIZE
A

EST WEIGHT:

SHEET 22 of 45



TB3BAA - Passenger Push Bar Assembly

| Parts List | | |
|------------|-----|---------------------------------------|
| ITEM | QTY | DESCRIPTION |
| 1 | 1 | Frame For Passenger Push Bar Assembly |
| 2 | 1 | Roller Guide Set |
| 3 | 1 | Top Plastic Cover [Passenger] |
| 5 | 1 | 4-1/2" Stub Shaft |
| 6 | 1 | Tapped Base Bearing 1-1/4" |
| 7 | 2 | Flat Head Screw 3/8"-16 x 1-1/4" |
| 8 | 2 | FLAT HEAD SCREW 3/8"-16x3/4" |
| 9 | 4 | 3/8" - 16 x 1 1/4" UNC Hex Screw |
| 10 | 6 | 3/8"-16 18-8ss Heavy Hex Nut |
| 11 | 2 | 7/16" - 14 x 1.13" UNC Hex Screw |
| 19 | 1 | Bumper Plate 10" |



AVW EQUIPMENT CO., INC.
105 S. 9TH AVENUE
MAYWOOD, IL 60153
Tel: 708-343-7738 Fax: 708-343-9065
WWW.AVWEQUIPMENT.COM

- COMPANY PROPRIETARY NOTE -

THIS DRAWING AND ITS DESIGNS ARE PROPERTY OF AVW EQUIPMENT CO. & IT IS NOT TO BE USED OR REPRODUCED WITHOUT THE PERMISSION FROM AVW CO.

DRAWN BY

Ljubomir

CUSTOMER: AVW Equipment

CHECKED BY

PROJECT: Tire Shine

QTY

DESCRIPTION: Passenger Push Bar Assembly

RELEASE DATE

8/7/2021

PART NUMBER: TB3BAA

REV#

DIMENSION ARE IN INCHES & PROVIDED PRIOR TO SURFACE TREATMENTS, UNLESS NOTED.

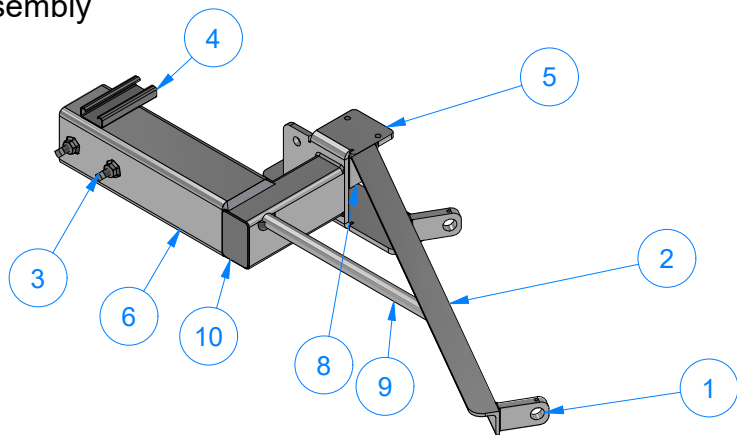
SIZE
A

EST WEIGHT:

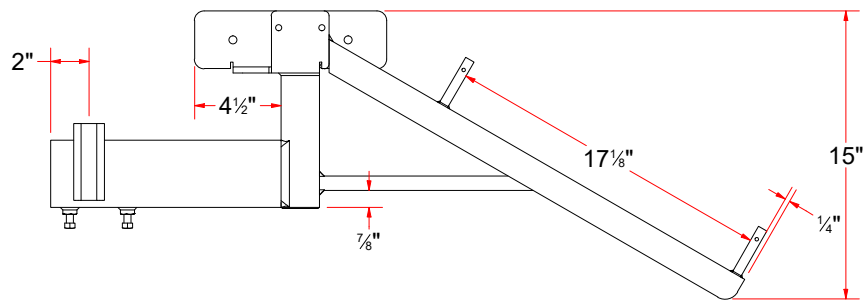
SHEET 23 of 45

PATH: L:\Libraries\Productivity\Tire Washer\Push Bar Assembly\TB3BAA - Passenger Push Bar Assembly.iam

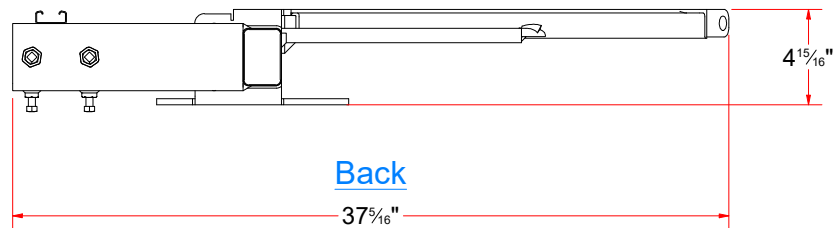
TB3AAAA - Frame For Driver Push Bar Assembly



| Parts List | | |
|------------|-----|--|
| ITEM | QTY | DESCRIPTION |
| 1 | 2 | Support Bracket for Roller Guide Shaft |
| 2 | 1 | Angle #3/16" x 1 1/2" x 1 1/2" x 14" LG. |
| 3 | 4 | SQUARE BOLT - 3/8"-16 x 3/4" L |
| 4 | 1 | Unistrut 1/2" x 1-1/2" x 4" |
| 5 | 1 | Bearing Support Plate [Driver] |
| 6 | 1 | Sq. Tub. Assem. 3-1/2" x 12" |
| 7 | 1 | Rct.Tubing [7 Ga.] 2" x 3" x 7" LG. |
| 8 | 1 | Support Plate #3/16 x 1 1/2" x 1 1/2" |
| 9 | 1 | Support Shaft 3/4" x 12-1/2" |
| 10 | 1 | Sheet Metal [18 Ga.] 1 7/8" x 2 7/8" |



Top



Back



AVW EQUIPMENT CO., INC.
105 S. 9TH AVENUE
MAYWOOD, IL 60153
Tel: 708-343-7738 Fax: 708-343-9065
WWW.AVWEQUIPMENT.COM

- COMPANY PROPRIETARY NOTE -

THIS DRAWING AND ITS DESIGNS ARE PROPERTY OF AVW EQUIPMENT CO. & IT IS NOT TO BE USED OR REPRODUCED WITHOUT THE PERMISSION FROM AVW CO.

DRAWN BY

Ljubomir

CUSTOMER: AVW Equipment

CHECKED BY

PROJECT: Tire Shine

QTY

DESCRIPTION: Frame For Driver Push Bar Assembly

RELEASE DATE

8/7/2021

PART NUMBER: TB3AAAA

REV#

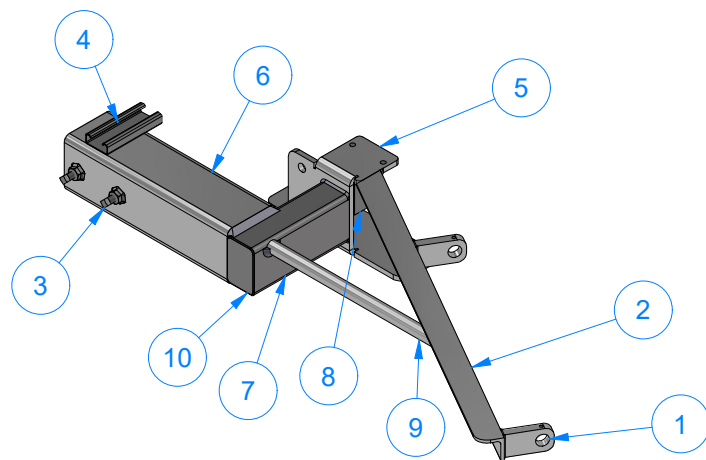
DIMENSION ARE IN INCHES & PROVIDED PRIOR TO SURFACE TREATMENTS, UNLESS NOTED.

SIZE
A

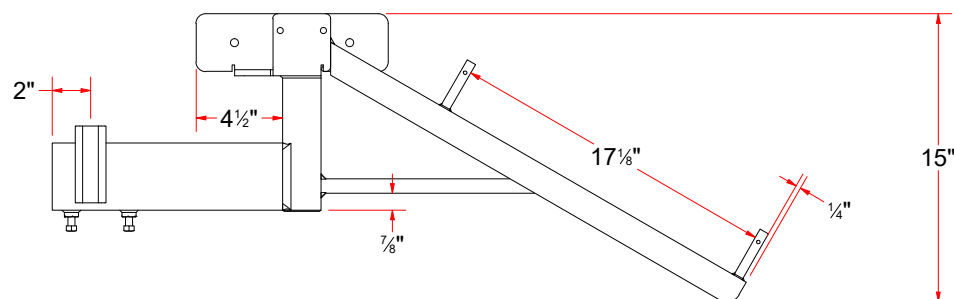
EST WEIGHT:

SHEET 24 of 45

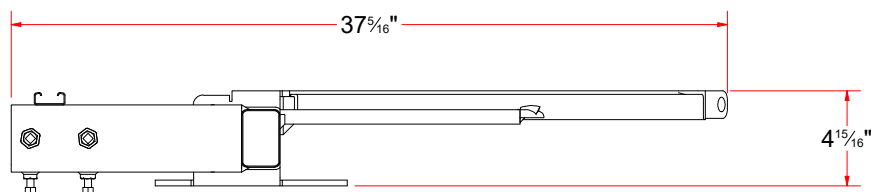
TB3AAAA - Frame For Driver Push Bar Assembly



| Parts List | | |
|------------|-----|--|
| ITEM | QTY | DESCRIPTION |
| 3 | 4 | SQUARE BOLT - 3/8"-16 x 3/4" L |
| 4 | 1 | Unistrut 1/2" x 1-1/2" x 4" |
| 8 | 1 | Support Plate #3/16 x 1 1/2" x 1 1/2" |
| 7 | 1 | Rct.Tubing [7 Ga.] 2" x 3" x 7" LG. |
| 10 | 1 | Sheet Metal [18 Ga.] 1 7/8" x 2 7/8" |
| 1 | 2 | Support Bracket for Roller Guide Shaft |
| 2 | 1 | Angle #3/16" x 1 1/2" x 1 1/2" x 14" LG. |
| 5 | 1 | Bearing Support Plate [Driver] |
| 6 | 1 | Sq. Tub. Assem. 3-1/2" x 12" |
| 9 | 1 | Support Shaft 3/4" x 12-1/2" |



Top



Back



AVW EQUIPMENT CO., INC.
105 S. 9TH AVENUE
MAYWOOD, IL 60153
Tel: 708-343-7738 Fax: 708-343-9065
WWW.AVWEQUIPMENT.COM

- COMPANY PROPRIETARY NOTE -

THIS DRAWING AND ITS DESIGNS ARE PROPERTY OF AVW EQUIPMENT CO. & IT IS NOT TO BE USED OR REPRODUCED WITHOUT THE PERMISSION FROM AVW CO.

DRAWN BY

Ljubomir

CUSTOMER: AVW Equipment

CHECKED BY

PROJECT: Tire Shine

QTY

DESCRIPTION: Frame For Driver Push Bar Assembly

RELEASE DATE

8/7/2021

PART NUMBER: TB3AAAA

REV#

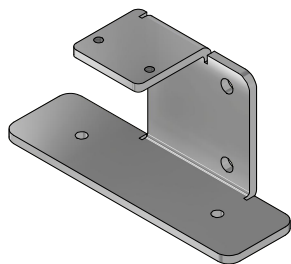
DIMENSION ARE IN INCHES & PROVIDED PRIOR TO SURFACE TREATMENTS, UNLESS NOTED.

SIZE
A

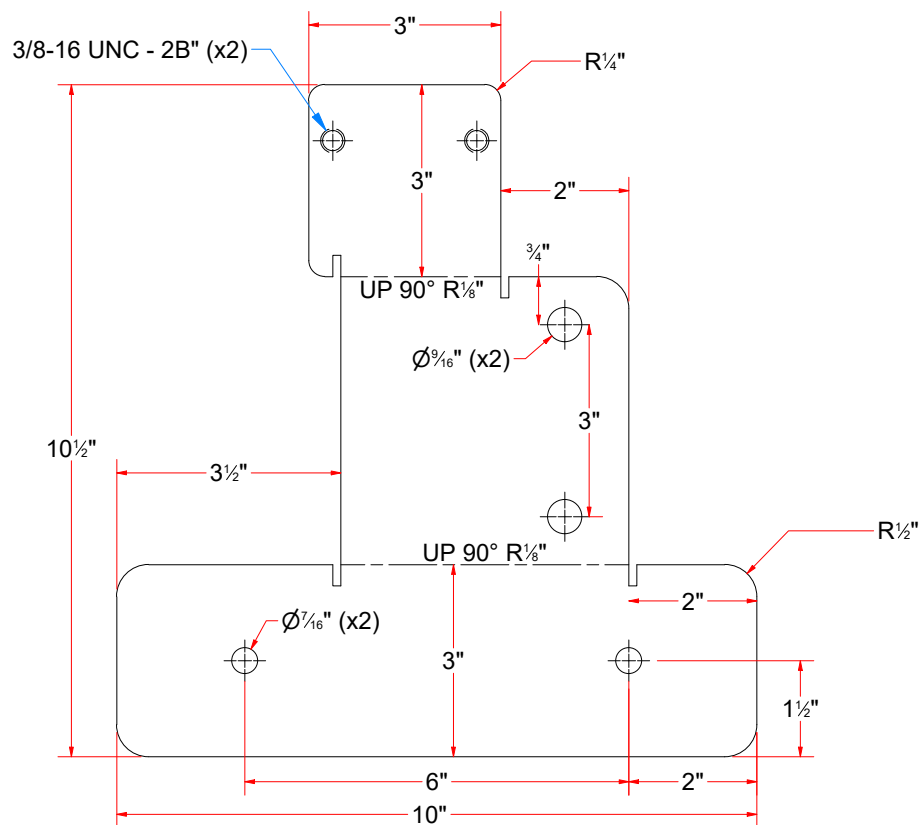
EST WEIGHT:

SHEET 25 of 45

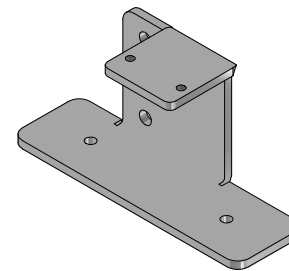
PATH:L:\Libraries\Productivity\Tire Washer\Push Bar Assembly\Parts\TB3AAAA - Frame For Driver Push Bar Assembly.iam



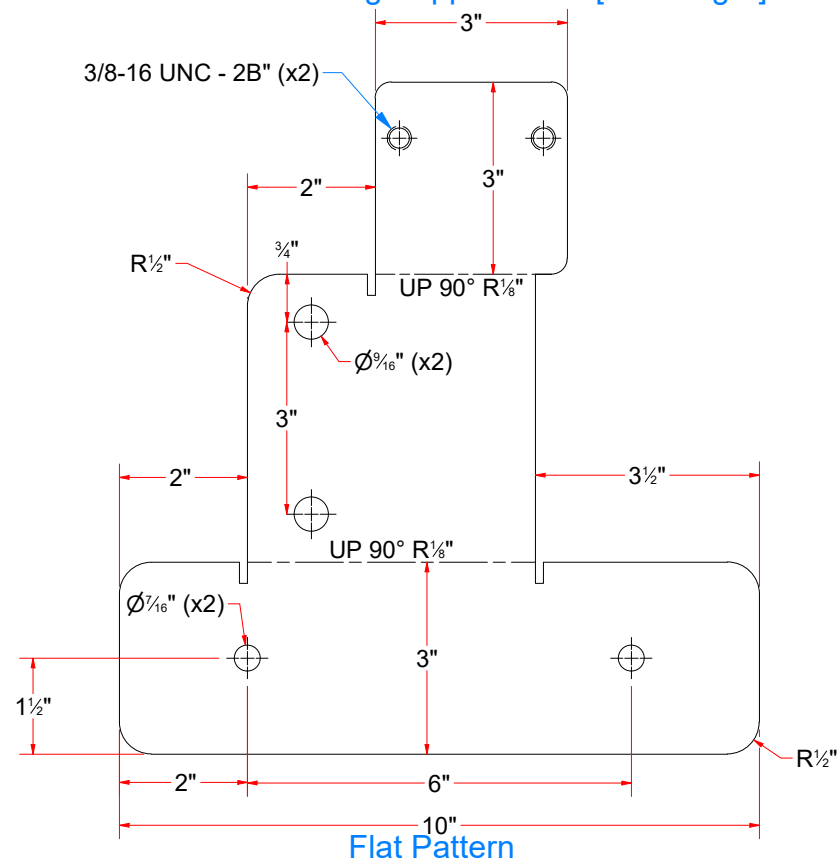
TB3AAAAB - Bearing Support Plate [Driver]



Flat Pattern



TB3BAAAB - Bearing Support Plate [Passenger]



Flat Pattern



AVW EQUIPMENT CO., INC.
105 S. 9TH AVENUE
MAYWOOD, IL 60153
Tel: 708-343-7738 Fax: 708-343-9065
WWW.AVWEQUIPMENT.COM

- COMPANY PROPRIETARY NOTE -

THIS DRAWING AND ITS DESIGNS ARE PROPERTY OF AVW EQUIPMENT CO. & IT IS NOT TO BE USED OR REPRODUCED WITHOUT THE PERMISSION FROM AVW CO.

DRAWN BY

Ljubomir

CUSTOMER: AVW Equipment

CHECKED BY

PROJECT: Tire Shine

QTY

DESCRIPTION: Bearing Support Plate [Driver]

RELEASE DATE

8/7/2021

PART NUMBER: TB3AAAAB

REV#

DIMENSION ARE IN INCHES & PROVIDED PRIOR TO SURFACE TREATMENTS, UNLESS NOTED.

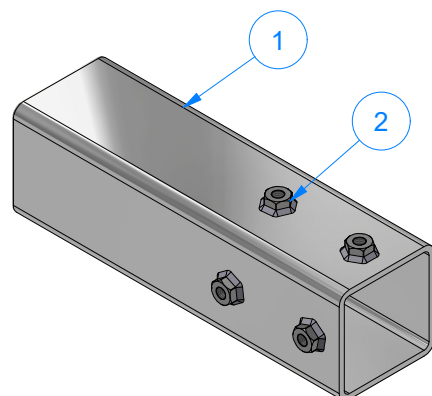
SIZE A

EST WEIGHT:

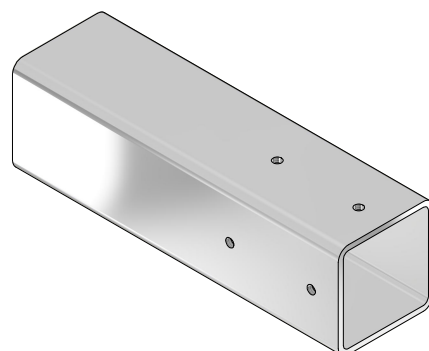
SHEET 26 of 45

PATH: L:\Libraries\Productivity\Tire Washer\Push Bar Assembly\Parts\TB3AAAAB - Bearing Support Plate [Driver].ipt

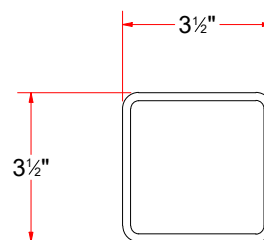
| Parts List | | |
|------------|-----|-------------------------------------|
| ITEM | QTY | DESCRIPTION |
| 1 | 1 | Sq. Tubing 3 1/2" x 3/16" x 12" LG. |
| 2 | 4 | 3/8"-16 18-8ss Heavy Hex Nut |



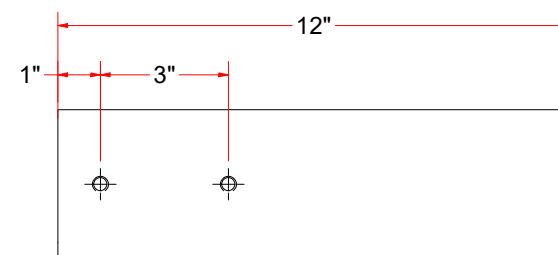
TB3AAAAA - Sq. Tub. Assem. 3-1/2" x 12"



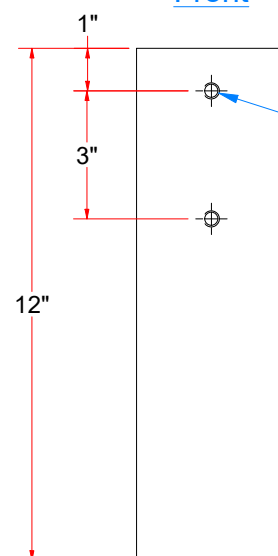
TB3AAAAA - Sq. Tubing 3 1/2" x 3/16" x 12" LG.



Front



Right



Bottom

3/8-16 UNC - 2B THRU (x2)"



AVW EQUIPMENT CO., INC.
105 S. 9TH AVENUE
MAYWOOD, IL 60153
Tel: 708-343-7738 Fax: 708-343-9065
WWW.AVWEQUIPMENT.COM

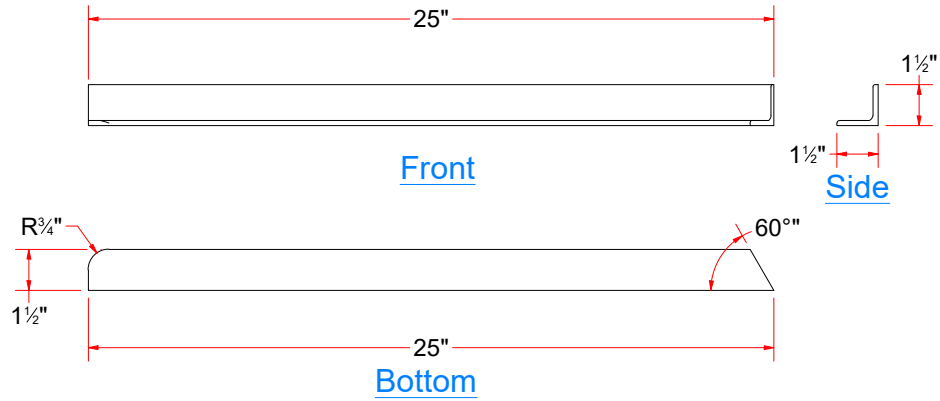
- COMPANY PROPRIETARY NOTE -

THIS DRAWING AND ITS DESIGNS ARE PROPERTY OF AVW EQUIPMENT CO. & IT IS NOT TO BE USED OR REPRODUCED WITHOUT THE PERMISSION FROM AVW CO.

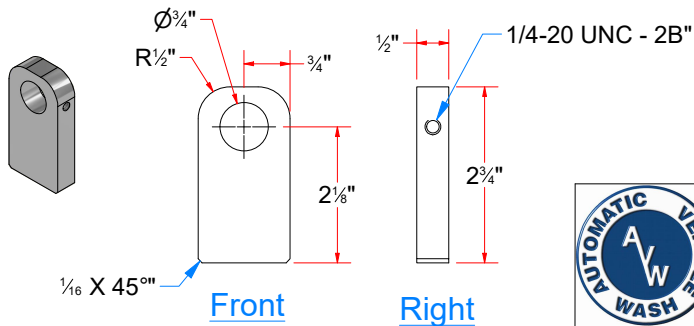
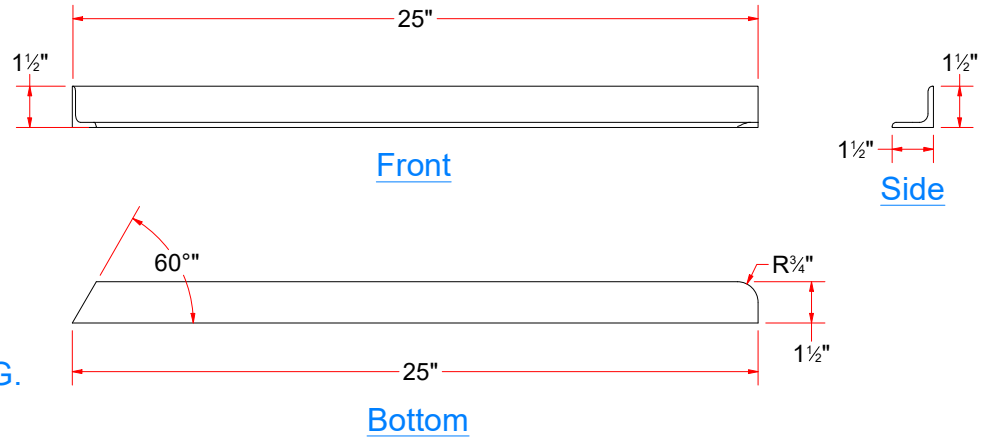
| | | | |
|---|----------|---|----------------|
| DRAWN BY | Ljubomir | CUSTOMER: AVW Equipment | |
| CHECKED BY | | PROJECT: Tire Shine | |
| QTY | | DESCRIPTION: Sq. Tub. Assem. 3-1/2" x 12" | |
| RELEASE DATE | 8/7/2021 | PART NUMBER: TB3AAAAA | REV# |
| DIMENSION ARE IN INCHES & PROVIDED PRIOR TO SURFACE TREATMENTS, UNLESS NOTED. | | SIZE A | EST WEIGHT: |
| | | | SHEET 27 of 45 |

PATH:L:\Libraries\Productivity\Tire Washer\Push Bar Assembly\Parts\TB3AAAAA - Sq. Tubing Assembly 3.5 in x 3-16 in x 12 in LG..iam


TB3AAAAC - Angle #3/16" x 1 1/2" x 1 1/2" x 14" LG.



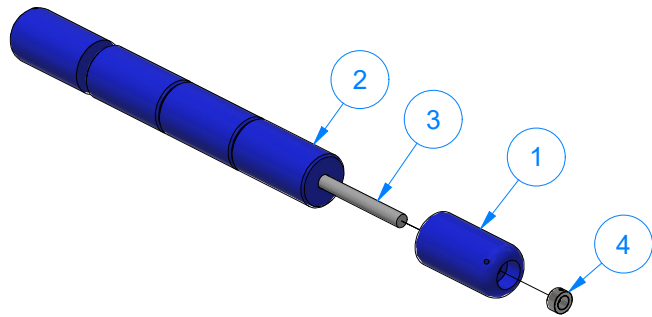
TB3BAAAC - Angle #3/16" x 1-1/2" x 1-1/2" x 25 LG.



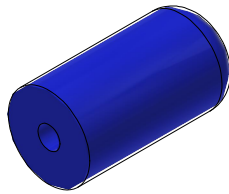
TB3AAAAE - Support Bracket for Roller Guide Shaft

| | | | | |
|---|--------------|--|---|-------------|
|  <p>AVW EQUIPMENT CO., INC. 105 S. 9TH AVENUE MAYWOOD, IL 60153 Tel: 708-343-7738 Fax: 708-343-9065 WWW.AVWEQUIPMENT.COM</p> | DRAWN BY | Ljubomir | CUSTOMER: AVW Equipment | |
| | CHECKED BY | | PROJECT: Tire Shine | |
| | QTY | | DESCRIPTION: Angle #3/16" x 1 1/2" x 1 1/2" x 14" LG. | |
| | RELEASE DATE | 8/7/2021 | PART NUMBER: TB3AAAAC | REV# |
| <p>- COMPANY PROPRIETARY NOTE - THIS DRAWING AND ITS DESIGNS ARE PROPERTY OF AVW EQUIPMENT CO. & IT IS NOT TO BE USED OR REPRODUCED WITHOUT THE PERMISSION FROM AVW CO.</p> | | <p>DIMENSION ARE IN INCHES & PROVIDED PRIOR TO SURFACE TREATMENTS, UNLESS NOTED.</p> | | EST WEIGHT: |
| <p>SIZE A</p> | | SHEET 28 of 45 | | |

PATH:L:\Libraries\Productivity\Tire Washer\Push Bar Assembly\Parts\TB3AAAAC - 1-1_2 Angle Bar [Driver].ipt

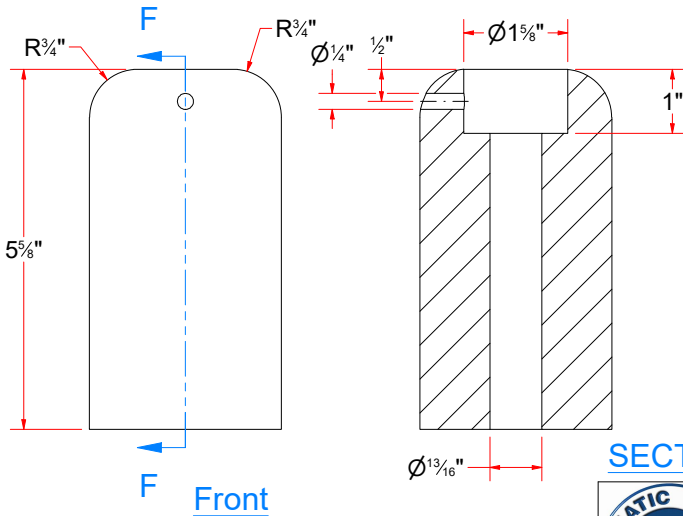


TB3AAAD - Roller Guide Set

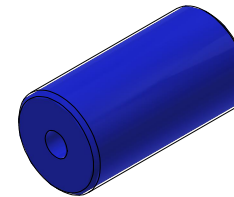


TB3AAADA

UHMW Round 3" OD. x 13/16" ID. x 5 5/8" LG.

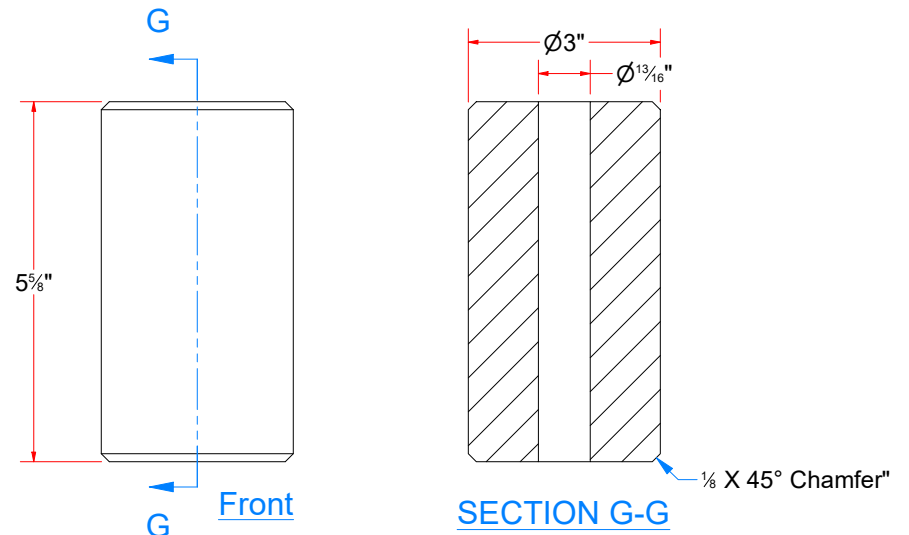


SECTION F-F



TB3AAADB

UHMW Round 3" OD. x 13/16" ID. x 5 5/8" LG.



SECTION G-G

| Parts List | | |
|------------|-----|---|
| ITEM | QTY | DESCRIPTION |
| 1 | 2 | UHMW Round 3" OD. x 13/16" ID. x 5 5/8" LG. |
| 2 | 3 | UHMW Round 3" OD. x 13/16" ID. x 5 5/8" LG. |
| 3 | 1 | Shaft 3/4" D x 23 3/8" LG. |
| 4 | 2 | 3_4 Set Screw Collar |



AVW EQUIPMENT CO., INC.
105 S. 9TH AVENUE
MAYWOOD, IL 60153
Tel: 708-343-7738 Fax: 708-343-9065
WWW.AVWEQUIPMENT.COM

- COMPANY PROPRIETARY NOTE -

THIS DRAWING AND ITS DESIGNS ARE PROPERTY OF AVW EQUIPMENT CO. & IT IS NOT TO BE USED OR REPRODUCED WITHOUT THE PERMISSION FROM AVW CO.

DRAWN BY

Ljubomir

CUSTOMER: AVW Equipment

CHECKED BY

PROJECT: Tire Shine

QTY

DESCRIPTION: Roller Guide Set

RELEASE DATE

8/7/2021

PART NUMBER: TB3AAAD

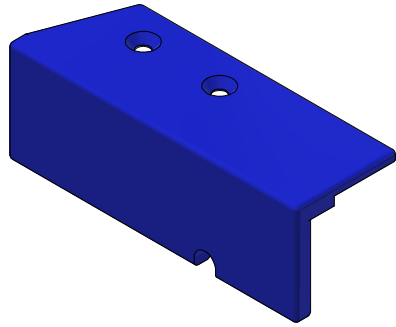
REV#

DIMENSION ARE IN INCHES & PROVIDED PRIOR TO SURFACE TREATMENTS, UNLESS NOTED.

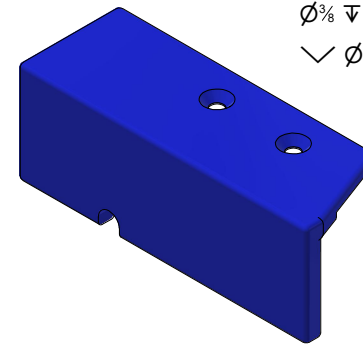
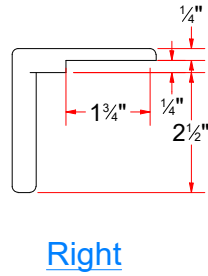
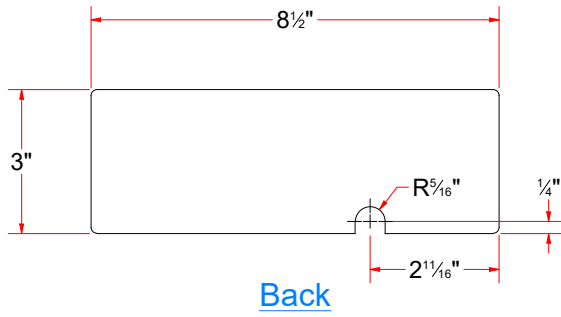
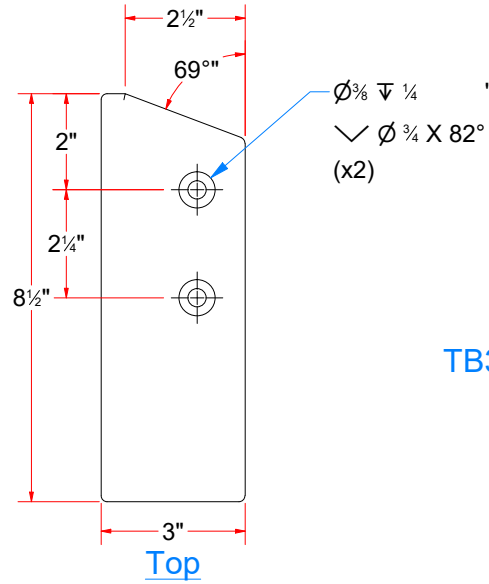
SIZE A

EST WEIGHT:

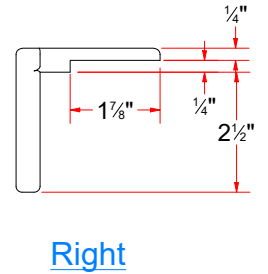
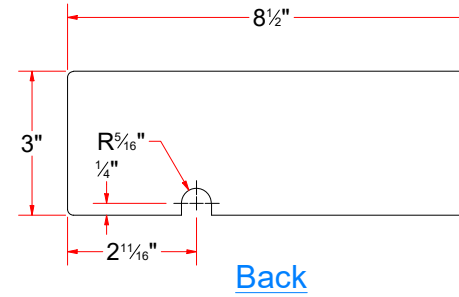
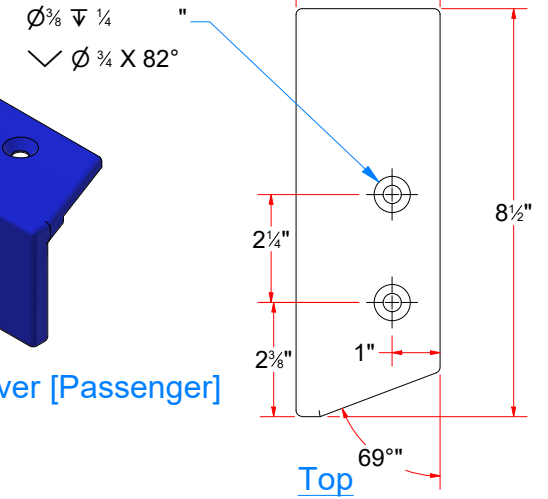
SHEET 29 of 45



TB3AAAC - Top Plastic Cover [Driver]



TB3BAAC - Top Plastic Cover [Passenger]



AVW EQUIPMENT CO., INC.
105 S. 9TH AVENUE
MAYWOOD, IL 60153
Tel: 708-343-7738 Fax: 708-343-9065
WWW.AVWEQUIPMENT.COM

- COMPANY PROPRIETARY NOTE -

THIS DRAWING AND ITS DESIGNS ARE PROPERTY OF AVW EQUIPMENT CO. & IT IS NOT TO BE USED OR REPRODUCED WITHOUT THE PERMISSION FROM AVW CO.

DRAWN BY

Ljubomir

CUSTOMER: AVW Equipment

CHECKED BY

PROJECT: Tire Shine

QTY

DESCRIPTION: Top Plastic Cover [Driver]

RELEASE DATE

8/7/2021

PART NUMBER: TB3AAAC

REV#

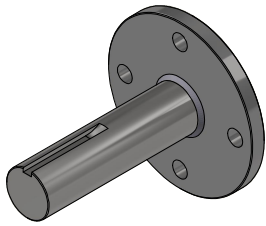
DIMENSION ARE IN INCHES & PROVIDED PRIOR TO SURFACE TREATMENTS, UNLESS NOTED.

SIZE A

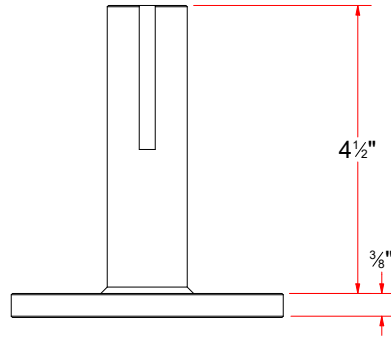
EST WEIGHT:

SHEET 30 of 45

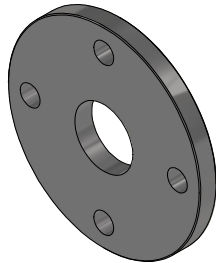
PATH: L:\Libraries\Productivity\Tire Washer\Push Bar Assembly\Parts\TB3AAAC - Top Plastic Cover [Driver].ipt



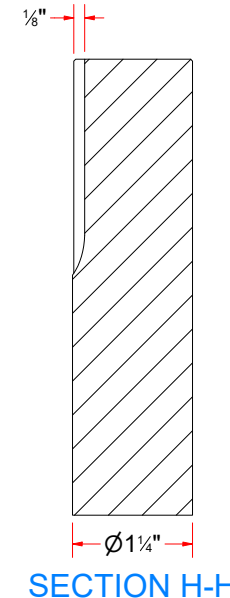
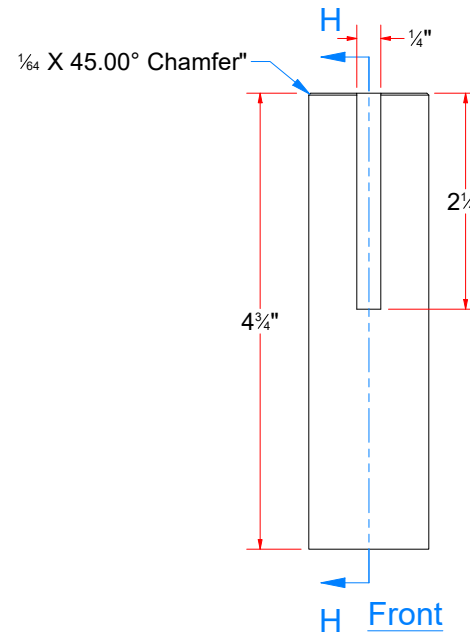
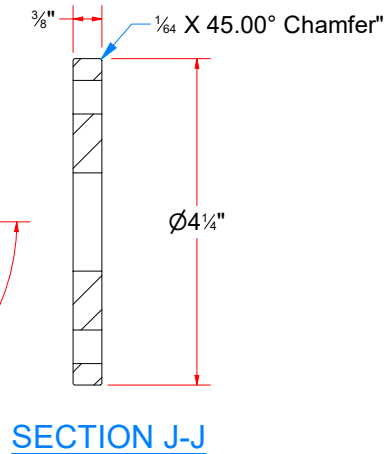
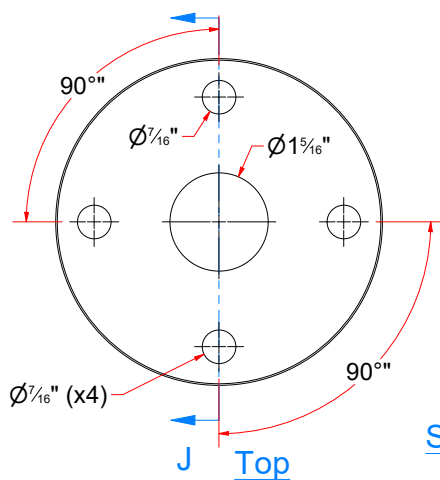
TB3AAAE - 4-1/2" Stub Shaft



TB3AAAEA - Round Shaft - 1 1/4" OD. x 4 3/4" LG.



TB3AAAEJ Bottom Plate For Stub Shaft (1-1_4in ID)



| Parts List | | |
|------------|-----|--|
| ITEM | QTY | DESCRIPTION |
| 1 | 1 | Bottom Plate For Stub Shaft (1-1_4in ID) |
| 2 | 1 | Round Shaft - 1 1/4" OD. x 4 3/4" LG. |



AVW EQUIPMENT CO., INC.
105 S. 9TH AVENUE
MAYWOOD, IL 60153
Tel: 708-343-7738 Fax: 708-343-9065
WWW.AVWEQUIPMENT.COM

- COMPANY PROPRIETARY NOTE -

THIS DRAWING AND ITS DESIGNS ARE PROPERTY OF AVW EQUIPMENT CO. & IT IS NOT TO BE USED OR REPRODUCED WITHOUT THE PERMISSION FROM AVW CO.

DRAWN BY

Ljubomir

CUSTOMER: AVW Equipment

CHECKED BY

PROJECT: Tire Shine

QTY

DESCRIPTION: 4-1/2" Stub Shaft

RELEASE DATE

8/7/2021

PART NUMBER: TB3AAAE

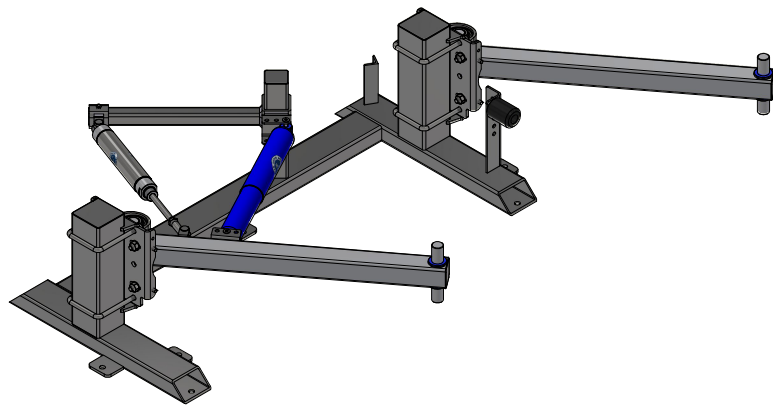
REV#

DIMENSION ARE IN INCHES & PROVIDED PRIOR TO SURFACE TREATMENTS, UNLESS NOTED.

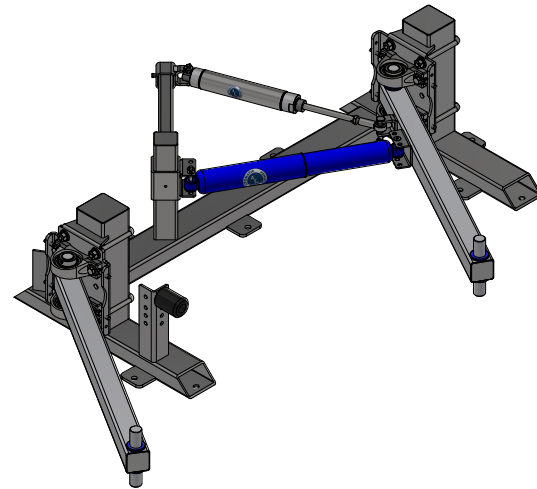
SIZE
A

EST WEIGHT:

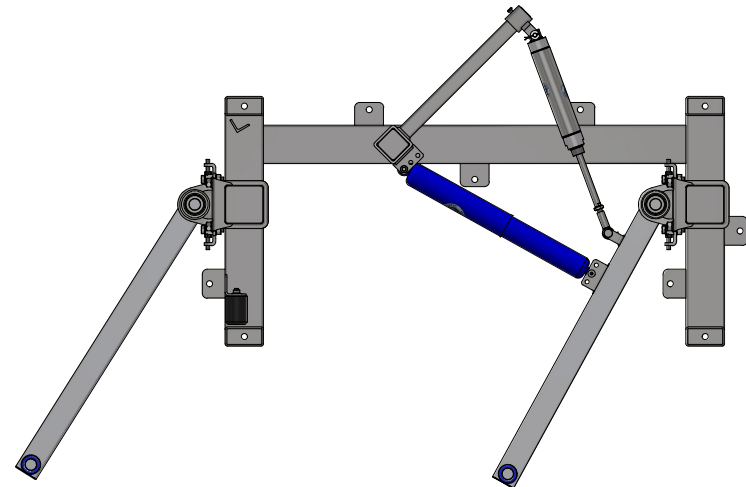
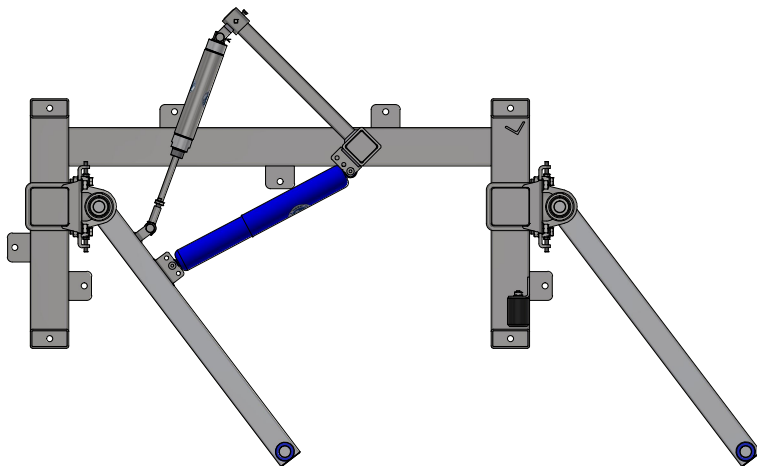
SHEET 31 of 45



TB3AB - Tire Dressing Frame Assembly [Driver]



TB3BB - Tire Dressing Frame Assembly [Passenger]



AVW EQUIPMENT CO., INC.
105 S. 9TH AVENUE
MAYWOOD, IL 60153
Tel: 708-343-7738 Fax: 708-343-9065
WWW.AVWEQUIPMENT.COM

- COMPANY PROPRIETARY NOTE -

THIS DRAWING AND ITS DESIGNS ARE PROPERTY OF AVW EQUIPMENT CO. & IT IS NOT TO BE USED OR REPRODUCED WITHOUT THE PERMISSION FROM AVW CO.

DRAWN BY

Ljubomir

CUSTOMER: AVW Equipment

CHECKED BY

PROJECT: Tire Shine

QTY

DESCRIPTION: Tire Dressing Frame Assembly [Driver]

RELEASE
DATE

8/7/2021

PART NUMBER: TB3AB

REV#

DIMENSION ARE IN INCHES & PROVIDED PRIOR
TO SURFACE TREATMENTS, UNLESS NOTED.

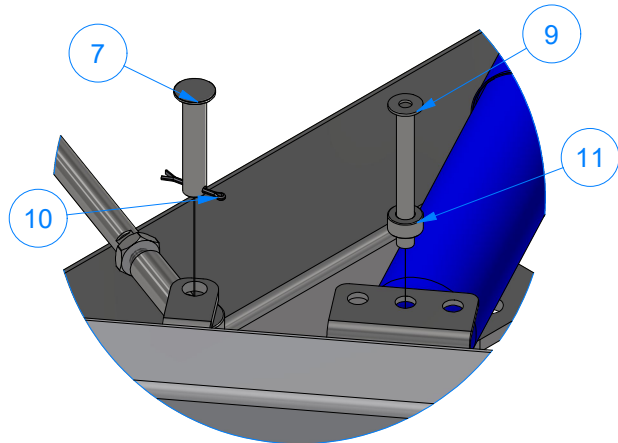
SIZE
A

EST WEIGHT:

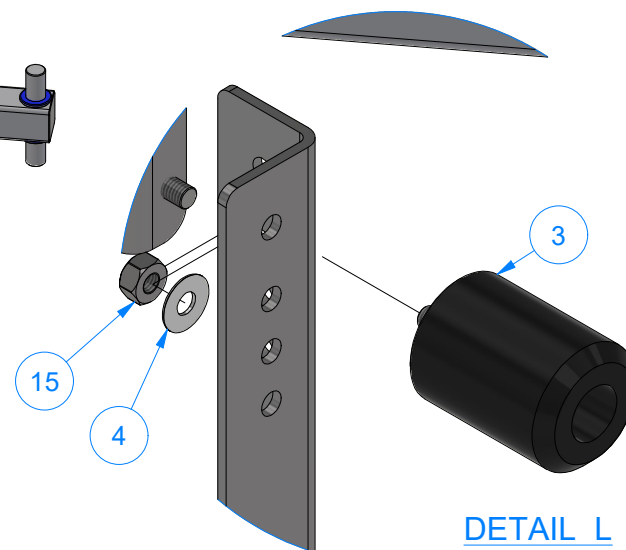
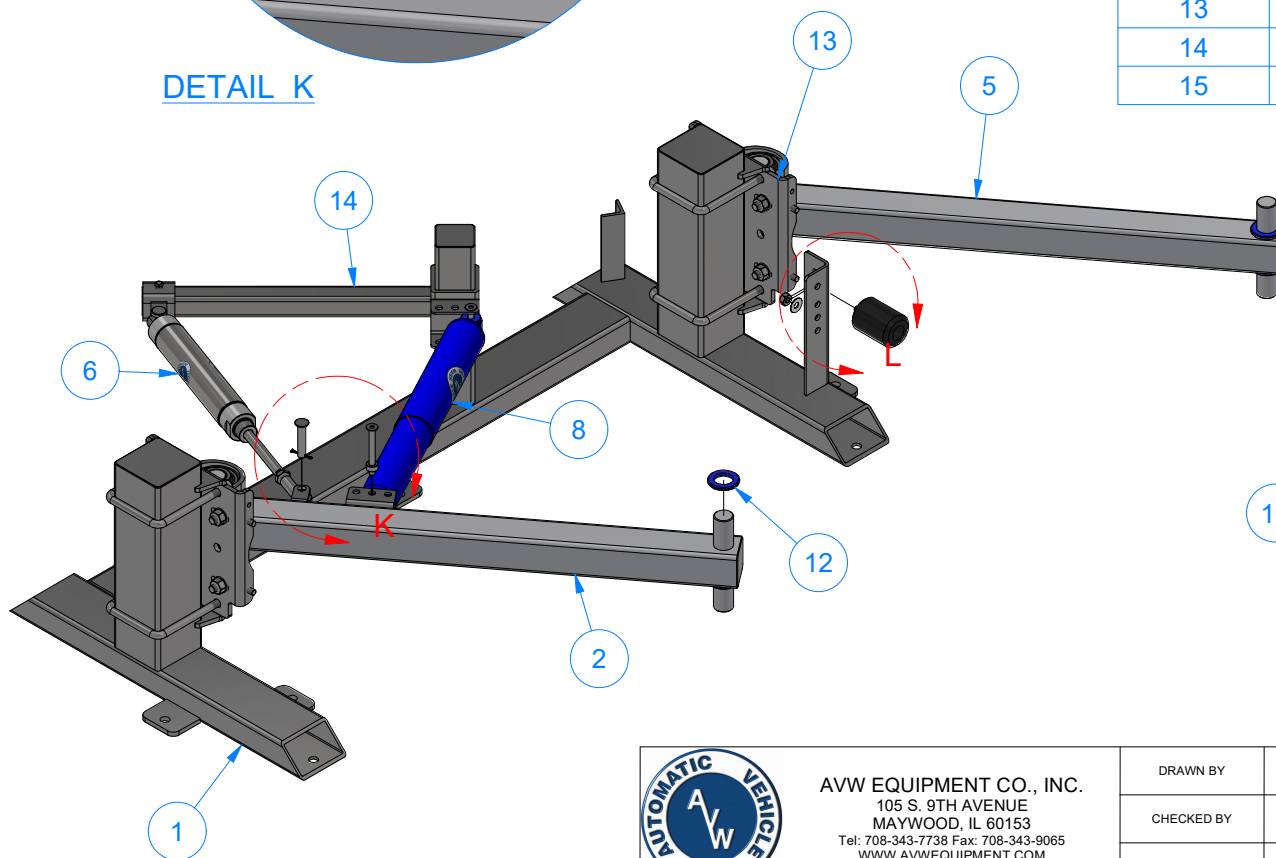
SHEET 32 of 45

PATH: L:\Libraries\Productivity\Tire Washer\Tire Shine Frame Assembly\TB3AB - Tire Shine Frame Assembly [Driver].iam

TB3AB - Tire Dressing Frame Assembly [Driver]



DETAIL K



DETAIL L

| Parts List | | |
|------------|-----|--|
| ITEM | QTY | DESCRIPTION |
| 1 | 1 | Tire Shine Frame [Driver] |
| 2 | 1 | Long Tire Shine Arm-W/ Brackets |
| 3 | 1 | RUBBER BUMPER - LONG |
| 4 | 1 | 3/8" Flat Washer |
| 5 | 1 | 34" Empty Tire Shine Arm |
| 6 | 1 | Air Cylinder 2" x 8" |
| 7 | 1 | Pin 1/2" x 2 1/2" |
| 8 | 1 | Blue Shock Absorber Assembly |
| 9 | 1 | Pin 3/8" x 3 1/2" LG |
| 10 | 1 | Cotter Pin |
| 11 | 1 | 3/8" Set Screw Collar |
| 12 | 8 | UHMW Spacer 1-1/4"ID |
| 13 | 2 | Arm Mount Plate Assembly |
| 14 | 1 | Shock Absorber Mounting Bracket Assembly |
| 15 | 1 | 3/8"-16 18-8ss Heavy Hex Nut |



AVW EQUIPMENT CO., INC.
105 S. 9TH AVENUE
MAYWOOD, IL 60153
Tel: 708-343-7738 Fax: 708-343-9065
WWW.AVWEQUIPMENT.COM

- COMPANY PROPRIETARY NOTE -

THIS DRAWING AND ITS DESIGNS ARE PROPERTY OF AVW EQUIPMENT CO. & IT IS NOT TO BE USED OR REPRODUCED WITHOUT THE PERMISSION FROM AVW CO.

DRAWN BY

Ljubomir

CUSTOMER: AVW Equipment

CHECKED BY

PROJECT: Tire Shine

QTY

DESCRIPTION: Tire Dressing Frame Assembly [Driver]

RELEASE DATE

8/7/2021

PART NUMBER: TB3AB

REV#

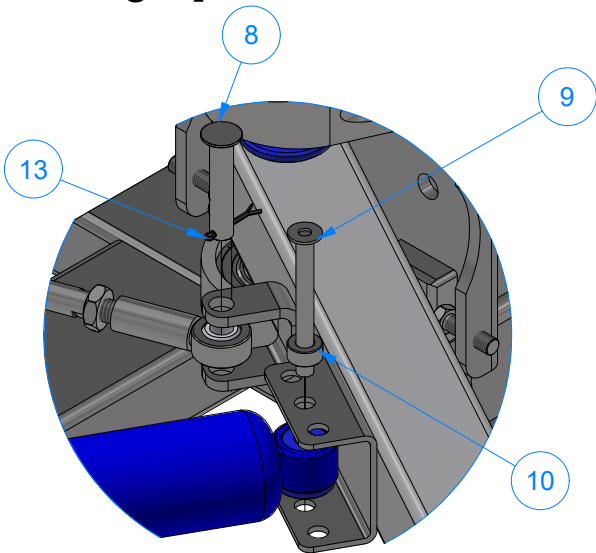
DIMENSION ARE IN INCHES & PROVIDED PRIOR TO SURFACE TREATMENTS, UNLESS NOTED.

SIZE
A

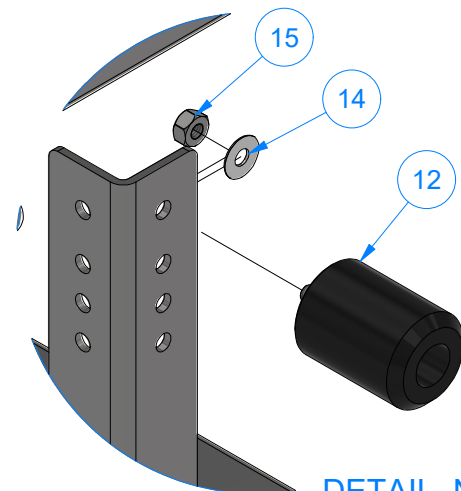
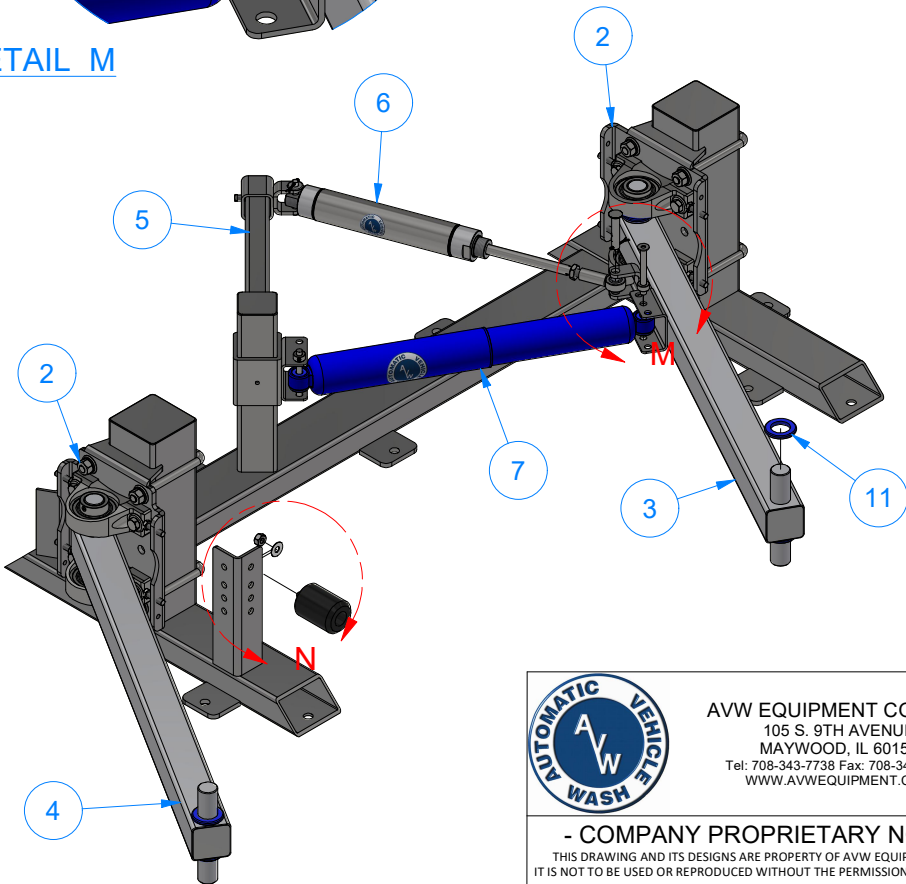
EST WEIGHT:

SHEET 33 of 45

TB3BB - Tire Dressing Frame Assembly
[Passenger]



DETAIL M



DETAIL N

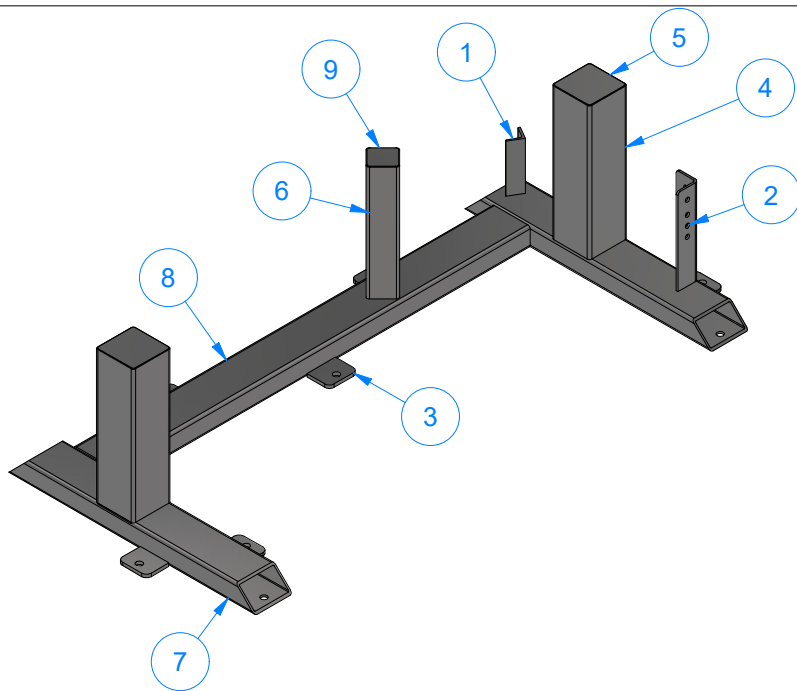
| Parts List | | |
|------------|-----|--|
| ITEM | QTY | DESCRIPTION |
| 1 | 1 | Tire Shine Frame [Passenger] |
| 2 | 2 | Arm Mount Plate Assembly |
| 3 | 1 | Long Tire Shine Arm-W/ Brackets |
| 4 | 1 | 34" Empty Tire Shine Arm |
| 5 | 1 | Shock Absorber Mounting Bracket Assembly |
| 6 | 1 | Air Cylinder 2" x 8" |
| 7 | 1 | Blue Shock Absorber Assembly |
| 8 | 1 | Pin 1/2" x 2 1/2" |
| 9 | 1 | Pin 3/8" x 3 1/2" LG |
| 10 | 1 | 3/8" Set Screw Collar |
| 11 | 8 | UHMW Spacer 1-1/4"ID |
| 12 | 1 | RUBBER BUMPER - LONG |
| 13 | 1 | Cotter Pin |
| 14 | 1 | 3/8" Flat Washer |
| 15 | 1 | 3/8"-16 18-8ss Heavy Hex Nut |



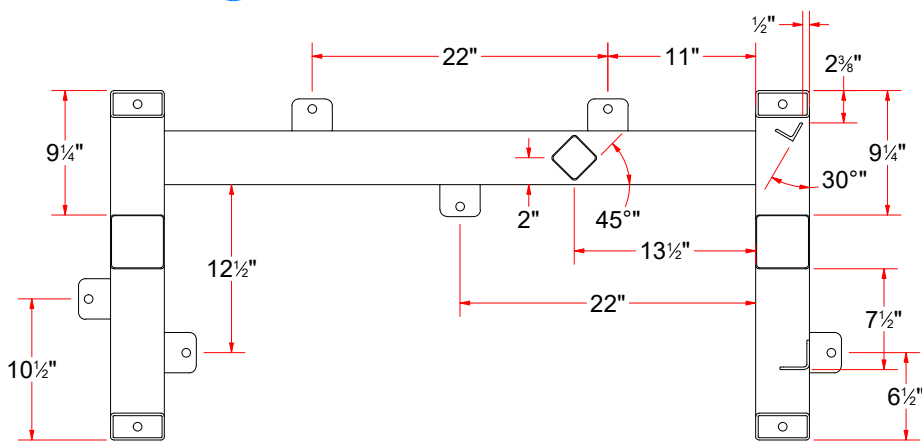
AVW EQUIPMENT CO., INC.
105 S. 9TH AVENUE
MAYWOOD, IL 60153
Tel: 708-343-7738 Fax: 708-343-9065
WWW.AVWEQUIPMENT.COM

- COMPANY PROPRIETARY NOTE -
THIS DRAWING AND ITS DESIGNS ARE PROPERTY OF AVW EQUIPMENT CO. &
IT IS NOT TO BE USED OR REPRODUCED WITHOUT THE PERMISSION FROM AVW CO.

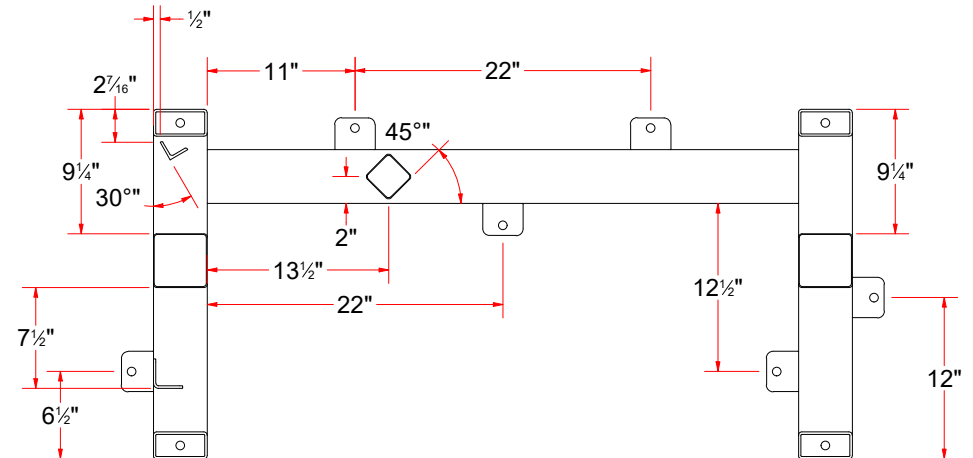
| | | | |
|---|----------|---|----------------|
| DRAWN BY | Ljubomir | CUSTOMER: AVW Equipment | |
| CHECKED BY | | PROJECT: Tire Shine | |
| QTY | | DESCRIPTION: Tire Dressing Frame Assembly [Passenger] | |
| RELEASE DATE | 8/7/2021 | PART NUMBER: TB3BB | REV# |
| DIMENSION ARE IN INCHES & PROVIDED PRIOR TO SURFACE TREATMENTS, UNLESS NOTED. | | SIZE A | EST WEIGHT: |
| | | | SHEET 34 of 45 |



| Parts List | | |
|------------|-----|--------------------------------------|
| ITEM | QTY | DESCRIPTION |
| 1 | 1 | L-profile 1 1/2 x 1 1/2 x 3/16 |
| 2 | 1 | Plate #3/16" x 4 1/16" x 9" LG. |
| 3 | 6 | Plate #5/16" x 2 3/8" x 3" |
| 4 | 2 | Sq.Tubing [7 Ga.] 4" x 14" LG |
| 5 | 2 | SS Sheet Metal #18Ga x 3 7/8" |
| 6 | 1 | Sq.Tubing [7 Ga.] 4" x 12" LG |
| 7 | 2 | Rct.Tubing [7 Ga.] 2" x 4" x 26" LG |
| 8 | 1 | Rct.Tubing [7 Ga.] 2" x 4" x 44" LG |
| 9 | 1 | Sheet Metal #18Ga. x 2 3/8" x 2 3/8" |



TB3ABA - Tire Shine Frame [Driver]



TB3BBA - Tire Shine Frame [Passenger]



AVW EQUIPMENT CO., INC.
105 S. 9TH AVENUE
MAYWOOD, IL 60153
Tel: 708-343-7738 Fax: 708-343-9065
WWW.AVWEQUIPMENT.COM

- COMPANY PROPRIETARY NOTE -

THIS DRAWING AND ITS DESIGNS ARE PROPERTY OF AVW EQUIPMENT CO. & IT IS NOT TO BE USED OR REPRODUCED WITHOUT THE PERMISSION FROM AVW CO.

DRAWN BY

Ljubomir

CUSTOMER: AVW Equipment

CHECKED BY

PROJECT: Tire Shine

QTY

DESCRIPTION: Tire Shine Frame [Driver]

RELEASE DATE

8/7/2021

PART NUMBER: TB3ABA

REV#

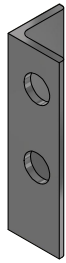
DIMENSION ARE IN INCHES & PROVIDED PRIOR TO SURFACE TREATMENTS, UNLESS NOTED.

SIZE
A

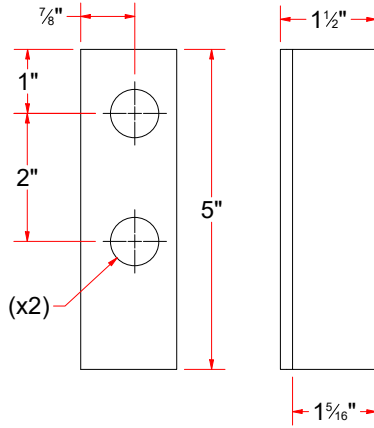
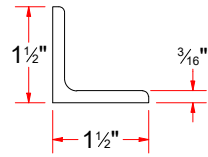
EST WEIGHT:

SHEET 35 of 45

PATH:L:\Libraries\Productivity\Tire Washer\Tire Shine Frame Assembly\Parts\TB3ABA - Tire Shine Frame [Driver].iam



L-profile 1 1/2 x 1 1/2 x 3/16



Ø 3/4" THRU (x2)

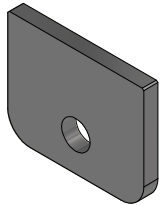
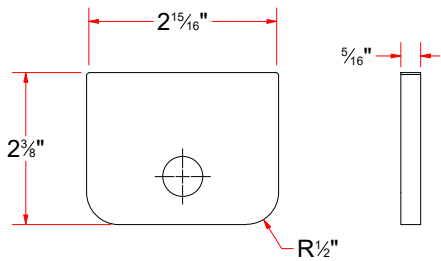


Plate #5/16" x 2 3/8" x 3"



Front

Side

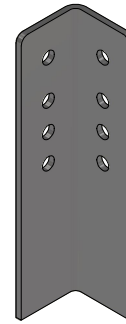
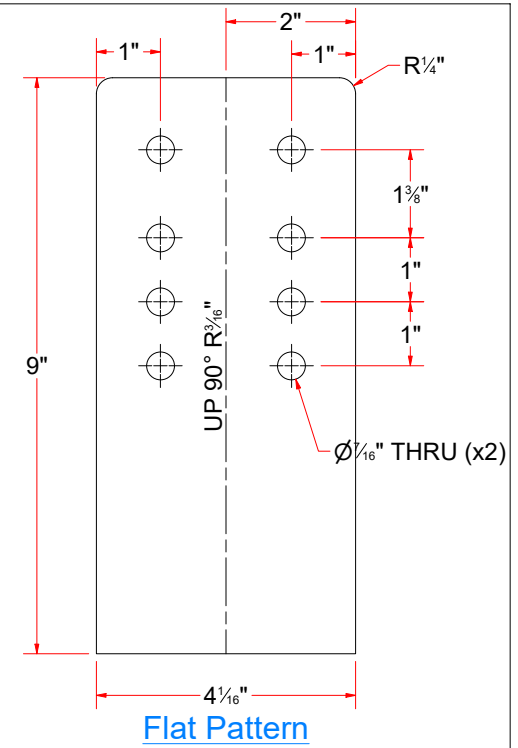
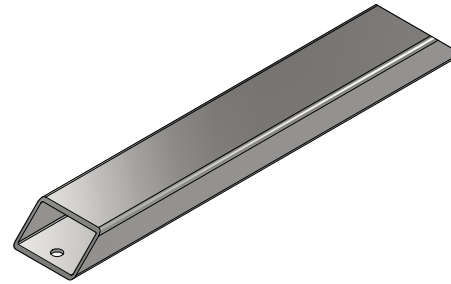


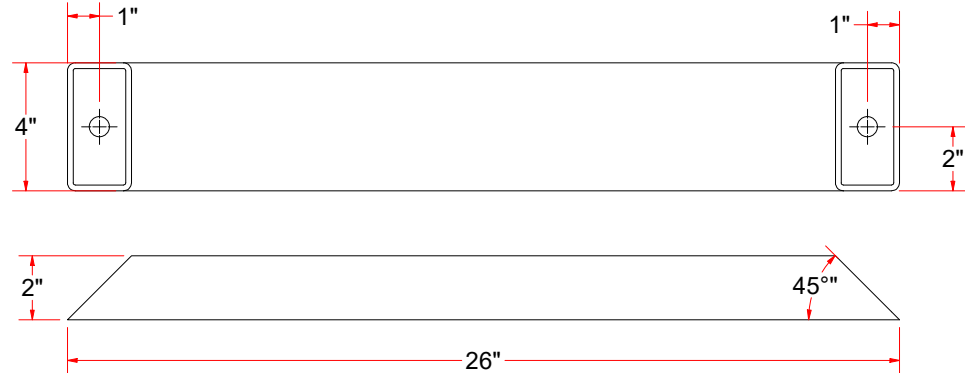
Plate #3/16" x 4 1/16" x 9" LG.



Flat Pattern



Rct.Tubing [7 Ga.] 2" x 4" x 26" LG



AVW EQUIPMENT CO., INC.
105 S. 9TH AVENUE
MAYWOOD, IL 60153
Tel: 708-343-7738 Fax: 708-343-9065
WWW.AVWEQUIPMENT.COM

- COMPANY PROPRIETARY NOTE -

THIS DRAWING AND ITS DESIGNS ARE PROPERTY OF AVW EQUIPMENT CO. & IT IS NOT TO BE USED OR REPRODUCED WITHOUT THE PERMISSION FROM AVW CO.

DRAWN BY

Ljubomir

CUSTOMER: AVW Equipment

CHECKED BY

PROJECT: Tire Shine

QTY

DESCRIPTION: L-profile 1 1/2 x 1 1/2 x 3/16

RELEASE DATE

8/7/2021

PART NUMBER: TB3ABAC

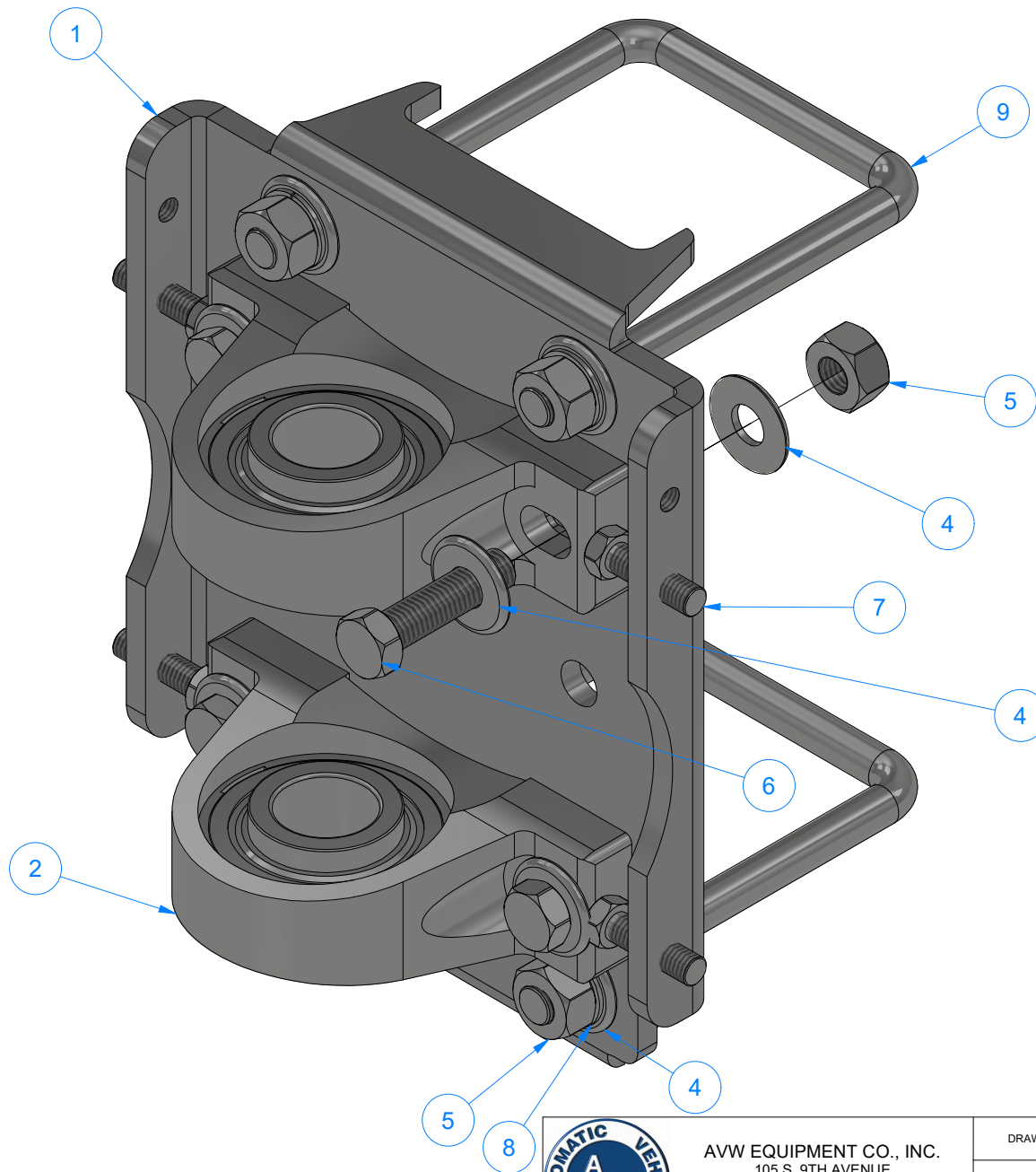
REV#

DIMENSION ARE IN INCHES & PROVIDED PRIOR TO SURFACE TREATMENTS, UNLESS NOTED.

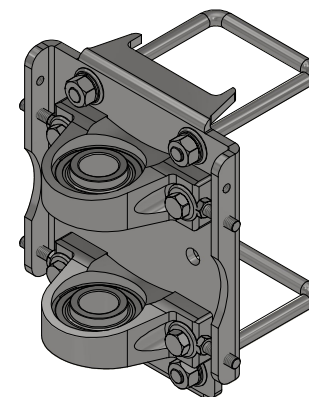
SIZE
A

EST WEIGHT:

SHEET 36 of 45



| Parts List | | |
|------------|-----|---|
| ITEM | QTY | DESCRIPTION |
| 1 | 1 | Empty Rocker Arm Mount Plate 13 9/16 x 10 |
| 2 | 2 | 1-1/4" Pillow Block |
| 4 | 12 | 1/2" Flat Washer |
| 5 | 8 | 1/2-13 Hex Nut |
| 6 | 4 | 1/2"-13 x 2" L Hex Screw |
| 7 | 4 | 3/8" - 16 x 1 1/4" UNC Hex Screw |
| 8 | 4 | 1/2" Split Lock Washer |
| 9 | 2 | Square U Bolt D 1/2" x 4" x 7 1/2" LG |



TB3ABD - Arm Mount Plate Assembly



AVW EQUIPMENT CO., INC.
105 S. 9TH AVENUE
MAYWOOD, IL 60153
Tel: 708-343-7738 Fax: 708-343-9065
WWW.AVWEQUIPMENT.COM

- COMPANY PROPRIETARY NOTE -

THIS DRAWING AND ITS DESIGNS ARE PROPERTY OF AVW EQUIPMENT CO. & IT IS NOT TO BE USED OR REPRODUCED WITHOUT THE PERMISSION FROM AVW CO.

DRAWN BY

Ljubomir

CUSTOMER: AVW Equipment

CHECKED BY

PROJECT: Tire Shine

QTY

DESCRIPTION: Arm Mount Plate Assembly

RELEASE DATE

8/7/2021

PART NUMBER: TB3ABD

REV#

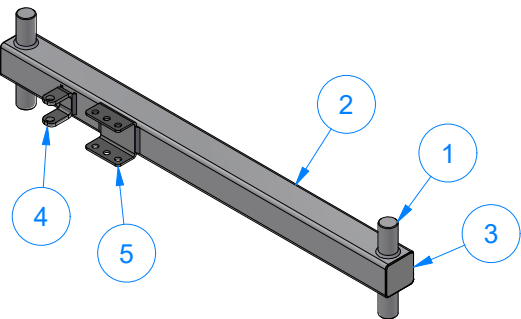
DIMENSION ARE IN INCHES & PROVIDED PRIOR TO SURFACE TREATMENTS, UNLESS NOTED.

SIZE
A

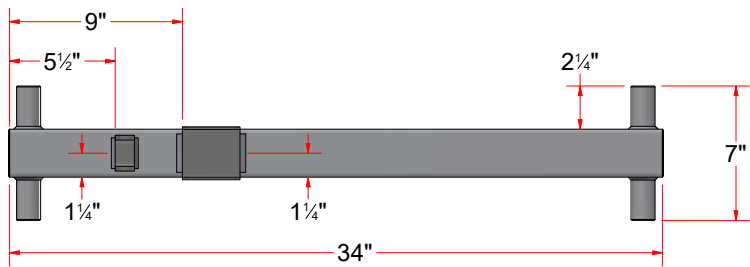
EST WEIGHT:

SHEET 37 of 45

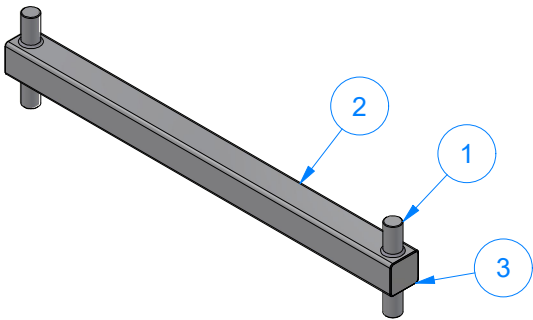
| Parts List | | |
|------------|-----|--------------------------------------|
| ITEM | QTY | DESCRIPTION |
| 1 | 2 | Round Bar 1 1/4" O.D. x 7" LG. |
| 2 | 1 | Sq. Tube 2-1/2" x 34"LG |
| 3 | 2 | Sheet Metal #18Ga. x 2 3/8" x 2 3/8" |
| 4 | 1 | Mount, for air cylinder |
| 5 | 1 | Shock Absorber Bracket |



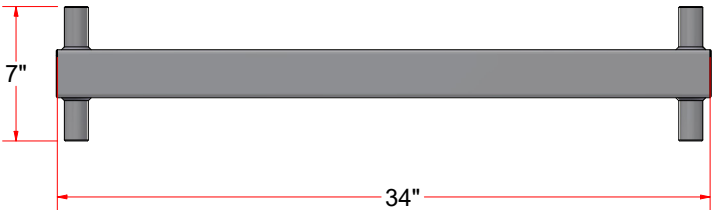
Long Tire Shine Arm-W/ Brackets



| Parts List | | |
|------------|-----|--------------------------------------|
| ITEM | QTY | DESCRIPTION |
| 1 | 2 | Round Bar 1 1/4" O.D. x 7" LG. |
| 2 | 1 | Sq. Tube 2-1/2" x 34"LG |
| 3 | 2 | Sheet Metal #18Ga. x 2 3/8" x 2 3/8" |



34" Empty Tire Shine Arm

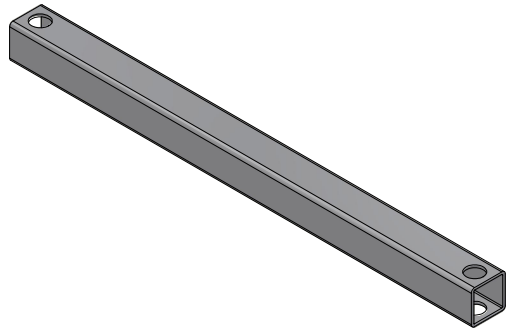


AVW EQUIPMENT CO., INC.
105 S. 9TH AVENUE
MAYWOOD, IL 60153
Tel: 708-343-7738 Fax: 708-343-9065
WWW.AVWEQUIPMENT.COM

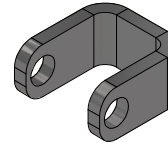
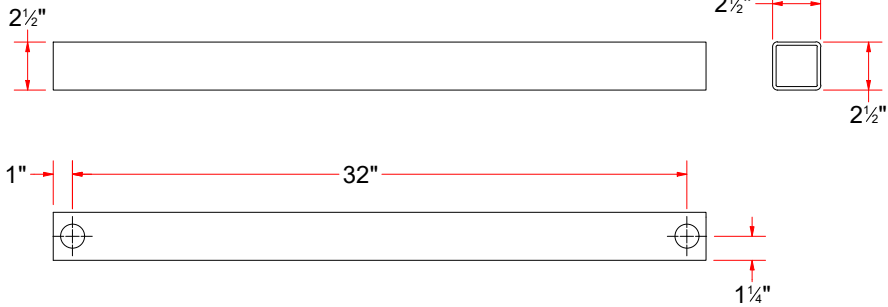
- COMPANY PROPRIETARY NOTE -
THIS DRAWING AND ITS DESIGNS ARE PROPERTY OF AVW EQUIPMENT CO. &
IT IS NOT TO BE USED OR REPRODUCED WITHOUT THE PERMISSION FROM AVW CO.

| | | | |
|---|----------|--|----------------|
| DRAWN BY | Ljubomir | CUSTOMER: AVW Equipment | |
| CHECKED BY | | PROJECT: Tire Shine | |
| QTY | | DESCRIPTION: Long Tire Shine Arm-W/ Brackets | |
| RELEASE DATE | 8/7/2021 | PART NUMBER: TB3ABB | REV# |
| DIMENSION ARE IN INCHES & PROVIDED PRIOR TO SURFACE TREATMENTS, UNLESS NOTED. | | SIZE A | EST WEIGHT: |
| | | | SHEET 38 of 45 |

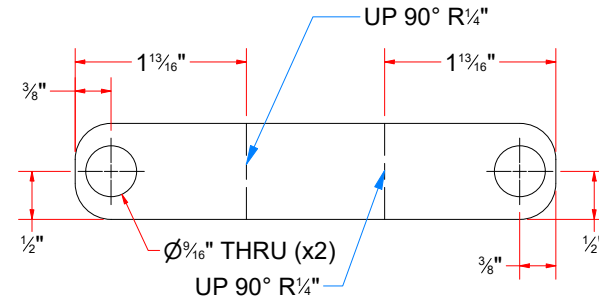
PATH:L:\Libraries\Productivity\Tire Washer\Tire Shine Frame Assembly\Parts\TB3ABB - Long Tire Shine Arm [WITH BRACKETS].iam



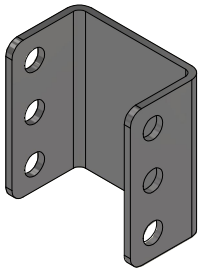
Sq. Tube 2-1/2" x 34"LG



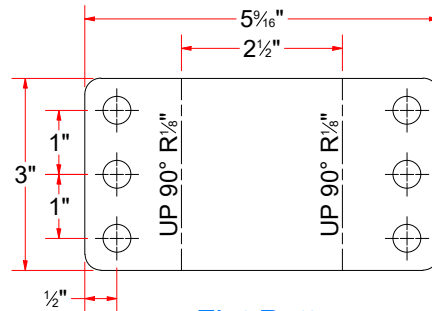
Mount, for air cylinder



Flat Pattern



Shock Absorber Bracket



Flat Pattern



AVW EQUIPMENT CO., INC.
105 S. 9TH AVENUE
MAYWOOD, IL 60153
Tel: 708-343-7738 Fax: 708-343-9065
WWW.AVWEQUIPMENT.COM

- COMPANY PROPRIETARY NOTE -

THIS DRAWING AND ITS DESIGNS ARE PROPERTY OF AVW EQUIPMENT CO. & IT IS NOT TO BE USED OR REPRODUCED WITHOUT THE PERMISSION FROM AVW CO.

DRAWN BY

Ljubomir

CUSTOMER: AVW Equipment

CHECKED BY

PROJECT: Tire Shine

QTY

DESCRIPTION: Sq. Tube 2-1/2" x 34"LG

RELEASE DATE

8/7/2021

PART NUMBER: TB3ABBA

REV#

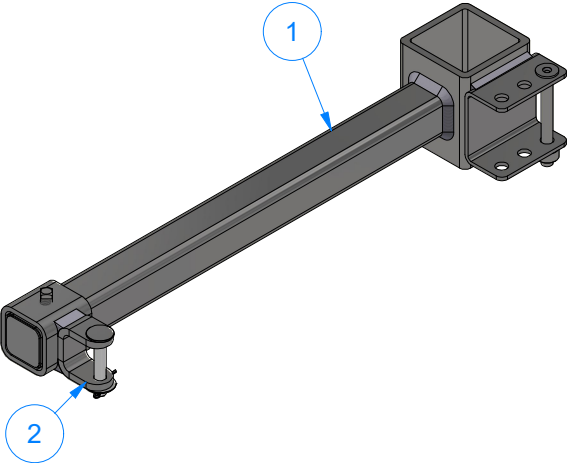
DIMENSION ARE IN INCHES & PROVIDED PRIOR TO SURFACE TREATMENTS, UNLESS NOTED.

SIZE
A

EST WEIGHT:

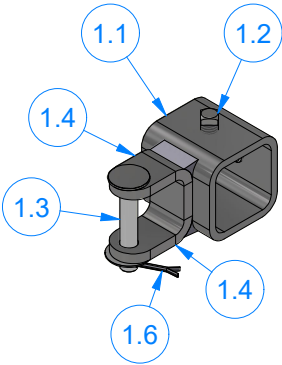
SHEET 39 of 45

TB3ABE - Shock Absorber Mounting Bracket Assembly



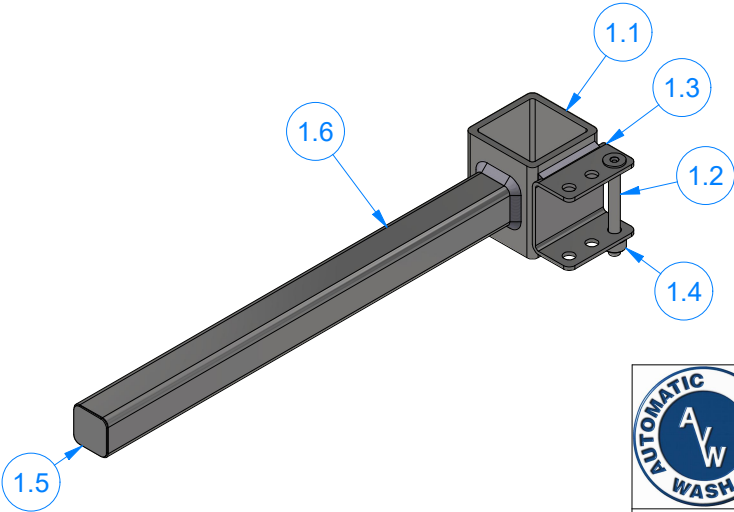
| Parts List | | |
|------------|-----|-------------------------------------|
| ITEM | QTY | DESCRIPTION |
| 1 | 1 | Shock Absorber Mounting Bracket Arm |
| 2 | 1 | Moveable Rear Shock Mount |

Moveable Rear Shock Mount



| Parts List | | |
|------------|-----|-----------------------------------|
| ITEM | QTY | DESCRIPTION |
| 1.1 | 1 | Sq. Tube #7 Ga x 2" |
| 1.2 | 2 | 3/8" - 20 x 0.5" UNC Square Screw |
| 1.3 | 1 | Pin 3/8" x 2 1/4" L |
| 1.4 | 1 | Clevis Bracket #1/4" x 2" |
| 1.5 | 1 | 3/8" Flat Washer |
| 1.6 | 1 | Cotter Pin |

Shock Absorber Mounting Bracket Arm



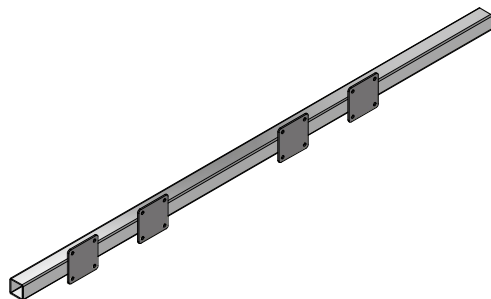
| Parts List | | |
|------------|-----|--|
| ITEM | QTY | DESCRIPTION |
| 1.1 | 1 | Sq. Tube 3" x #1/4" Wall x 3 1/2" LG |
| 1.2 | 1 | Pin 3/8" x 3 1/2" LG |
| 1.3 | 1 | Shock Absorber Bracket |
| 1.4 | 1 | 3/8" Set Screw Collar |
| 1.5 | 1 | SS Sheet Metal #18Ga (0.0478 in) x 1 7/16" x 1 7/16" |
| 1.6 | 1 | Sq. Tubing #7 Gauge (0.180 in) x 1 1/2" x 18" LG. |



AVW EQUIPMENT CO., INC.
105 S. 9TH AVENUE
MAYWOOD, IL 60153
Tel: 708-343-7738 Fax: 708-343-9065
WWW.AVWEQUIPMENT.COM

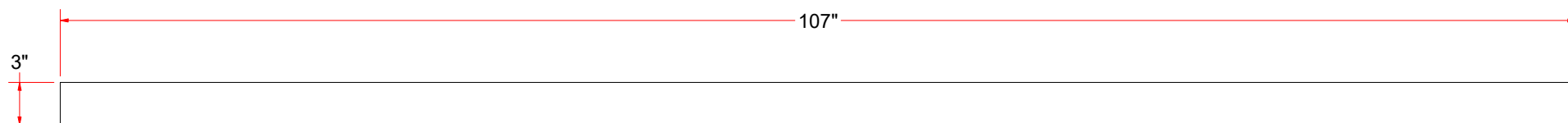
- COMPANY PROPRIETARY NOTE -
THIS DRAWING AND ITS DESIGNS ARE PROPERTY OF AVW EQUIPMENT CO. &
IT IS NOT TO BE USED OR REPRODUCED WITHOUT THE PERMISSION FROM AVW CO.

| | | | |
|---|----------|---|----------------|
| DRAWN BY | Ljubomir | CUSTOMER: AVW Equipment | |
| CHECKED BY | | PROJECT: Tire Shine | |
| QTY | | DESCRIPTION: Shock Absorber Mounting Bracket Assembly | |
| RELEASE DATE | 8/7/2021 | PART NUMBER: TB3ABE | REV# |
| DIMENSION ARE IN INCHES & PROVIDED PRIOR TO SURFACE TREATMENTS, UNLESS NOTED. | | SIZE A | EST WEIGHT: |
| | | | SHEET 40 of 45 |

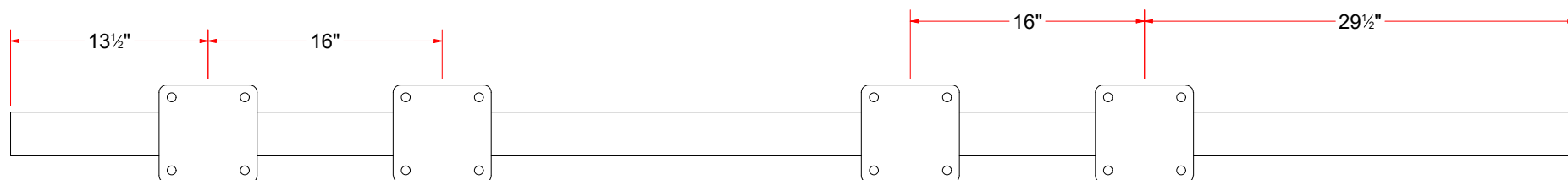


R-TB4AAC - Brush Support Frame

| Parts List | | | |
|------------|-----|--------------------------------------|--------------------|
| ITEM | QTY | DESCRIPTION | PART NUMBER |
| 1 | 1 | Sq. Tubbing #7Ga x 3" x 3" x 107" LG | SQTSS07GX300X10700 |
| 2 | 4 | Plate #1/4" x 6 11/16" x 6 11/16" | PLSS250X0669X0669 |



Top



Front



AVW EQUIPMENT CO., INC.
105 S. 9TH AVENUE
MAYWOOD, IL 60153
Tel: 708-343-7738 Fax: 708-343-9065
WWW.AVWEQUIPMENT.COM

- COMPANY PROPRIETARY NOTE -

THIS DRAWING AND ITS DESIGNS ARE PROPERTY OF AVW EQUIPMENT CO. & IT IS NOT TO BE USED OR REPRODUCED WITHOUT THE PERMISSION FROM AVW CO.

DRAWN BY

Ljubomir

CUSTOMER: AVW Equipment

CHECKED BY

PROJECT: Tire Shine

QTY

DESCRIPTION: Brush Support Frame

RELEASE DATE

8/7/2021

PART NUMBER: R-TB4AAC

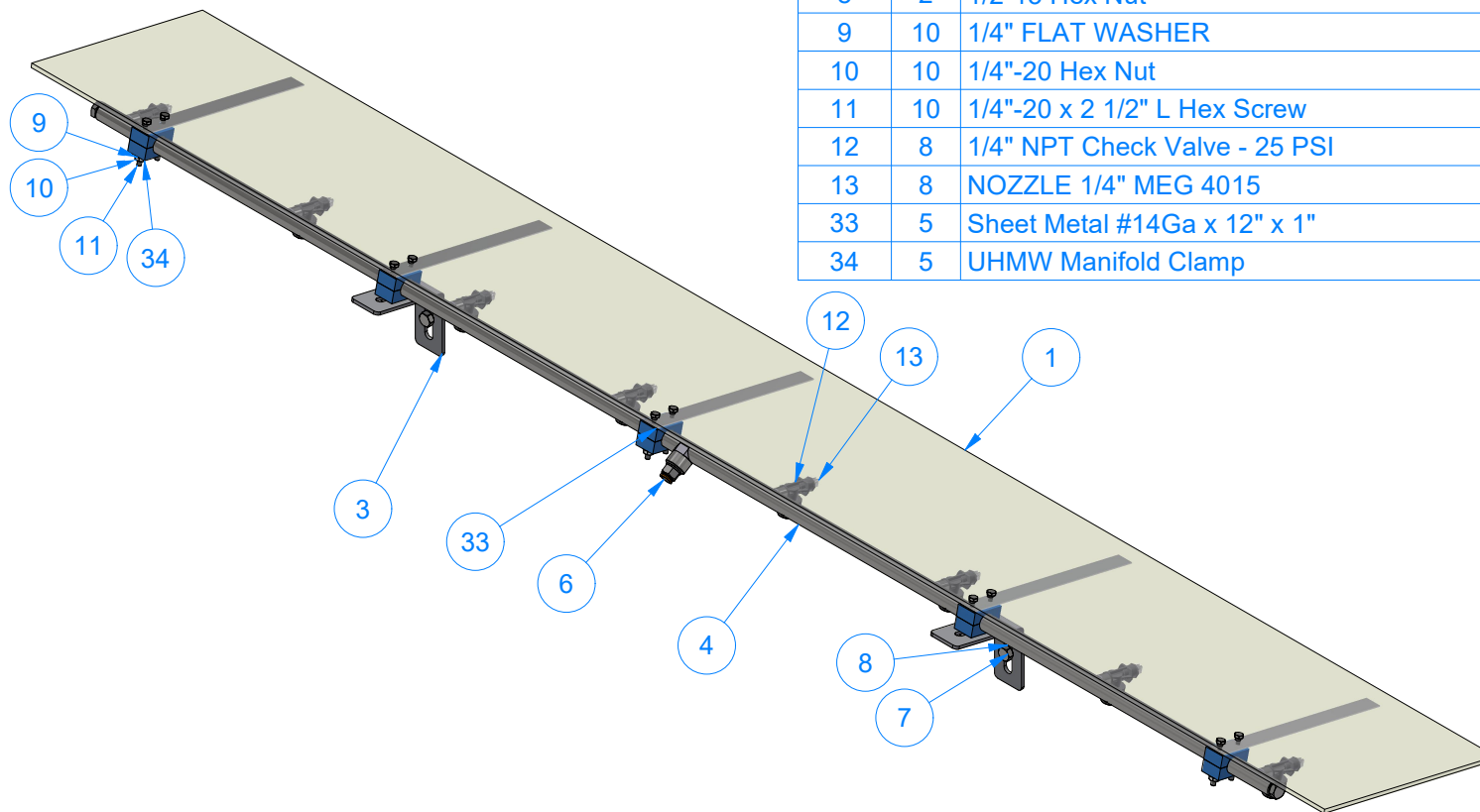
REV#

DIMENSION ARE IN INCHES & PROVIDED PRIOR TO SURFACE TREATMENTS, UNLESS NOTED.

SIZE
A

EST WEIGHT:

SHEET 41 of 45



| Parts List | | | |
|------------|-----|---|----------------------------------|
| ITEM | QTY | DESCRIPTION | PART NUMBER |
| 1 | 1 | Acrylic Tire Shine Brush Cover | TB2MB-CUS999-0417 |
| 3 | 2 | Manifold Bracket | TB2MC-CUS999-0417 |
| 4 | 1 | Tire Dressing Manifold, Spray Style Tube, 8 Manifolds | TB2MA-CUS999-0417 |
| 6 | 1 | 1_2 in Air Quick Connect Fitting | 1_2 in Air Quick Connect Fitting |
| 7 | 2 | 1/2" - 13 x 1.25" UNC Hex Screw | HHCS1213125 |
| 8 | 2 | 1/2-13 Hex Nut | HN1213 |
| 9 | 10 | 1/4" FLAT WASHER | FW14 |
| 10 | 10 | 1/4"-20 Hex Nut | HN1420 |
| 11 | 10 | 1/4"-20 x 2 1/2" L Hex Screw | HHCS1420250 |
| 12 | 8 | 1/4" NPT Check Valve - 25 PSI | V-DC14X14-25LB |
| 13 | 8 | NOZZLE 1/4" MEG 4015 | 1-4MEG-4015 |
| 33 | 5 | Sheet Metal #14Ga x 12" x 1" | TB2ME-CUS999-0417 |
| 34 | 5 | UHMW Manifold Clamp | TB2MD-CUS999-0417 |

TB2M-CUS999-0417 - Manifold Assembly, with Cover



AVW EQUIPMENT CO., INC.
105 S. 9TH AVENUE
MAYWOOD, IL 60153
Tel: 708-343-7738 Fax: 708-343-9065
WWW.AVWEQUIPMENT.COM

- COMPANY PROPRIETARY NOTE -

THIS DRAWING AND ITS DESIGNS ARE PROPERTY OF AVW EQUIPMENT CO. & IT IS NOT TO BE USED OR REPRODUCED WITHOUT THE PERMISSION FROM AVW CO.

PATH: L:\Designs\Product Lines\Tommy Car Wash\1. TOMMY PRODUCTIVITY\Tire Shine\Tire Shine Manifold Assembly\TB2M-CUS999-0417 - Tommy Manifold Assembly, with Cover\TB2M-CUS999-0417 - Tommy Manifold Assembly, with Cover.iam

DRAWN BY

Ljubomir

CUSTOMER: AVW Equipment

CHECKED BY

PROJECT: Tire Shine

QTY

DESCRIPTION: Manifold Assembly, with Cover

RELEASE DATE

8/7/2021

PART NUMBER: TB2M-CUS999-0417

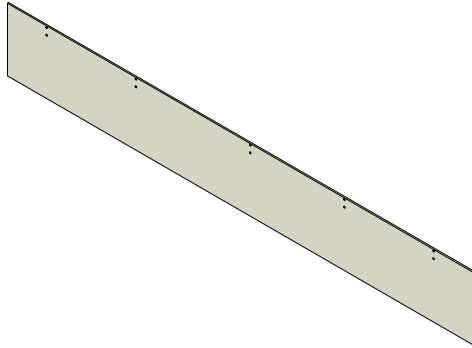
REV#

DIMENSION ARE IN INCHES & PROVIDED PRIOR TO SURFACE TREATMENTS, UNLESS NOTED.

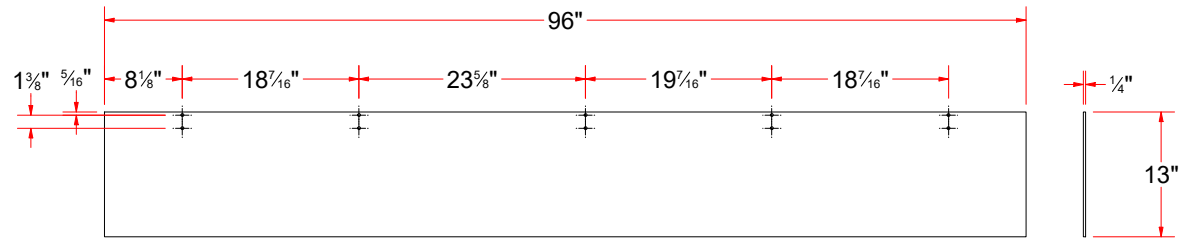
SIZE
A

EST WEIGHT:

SHEET 42 of 45

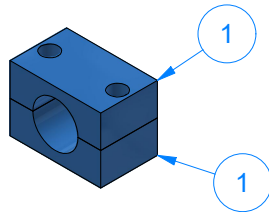


TB2MB-CUS999-0417 - Acrylic Tire Shine Brush Cover

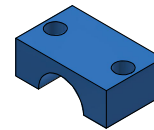


Top

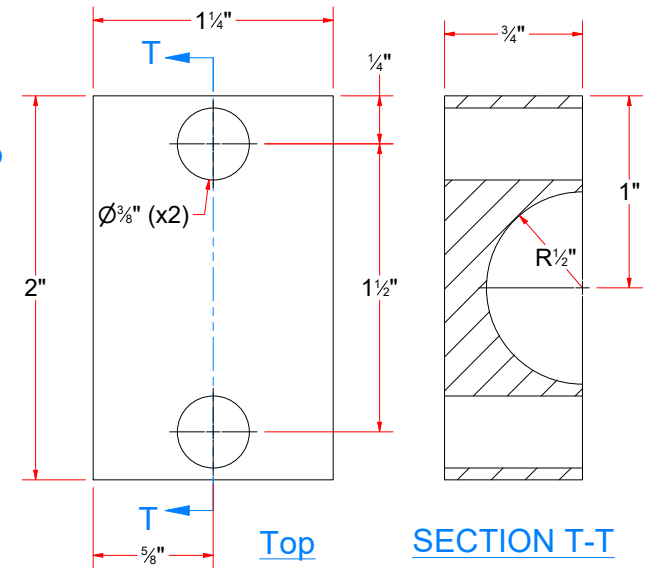
Side



TB2MD-CUS999-0417
UHMW Manifold Clamp



TB2MDA-CUS999-0417
Half of UHMW Manifold Clamp



Top

SECTION T-T

Parts List

| ITEM | QTY | DESCRIPTION | PART NUMBER |
|------|-----|-----------------------------|--------------------|
| 1 | 2 | Half of UHMW Manifold Clamp | TB2MDA-CUS999-0417 |



AVW EQUIPMENT CO., INC.
105 S. 9TH AVENUE
MAYWOOD, IL 60153
Tel: 708-343-7738 Fax: 708-343-9065
WWW.AVWEQUIPMENT.COM

- COMPANY PROPRIETARY NOTE -

THIS DRAWING AND ITS DESIGNS ARE PROPERTY OF AVW EQUIPMENT CO. & IT IS NOT TO BE USED OR REPRODUCED WITHOUT THE PERMISSION FROM AVW CO.

DRAWN BY

Ljubomir

CUSTOMER: AVW Equipment

CHECKED BY

PROJECT: Tire Shine

QTY

DESCRIPTION: Acrylic Tire Shine Brush Cover

RELEASE DATE

8/7/2021

PART NUMBER: TB2MB-CUS999-0417

REV#

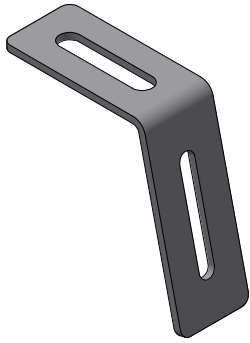
DIMENSION ARE IN INCHES & PROVIDED PRIOR TO SURFACE TREATMENTS, UNLESS NOTED.

SIZE A

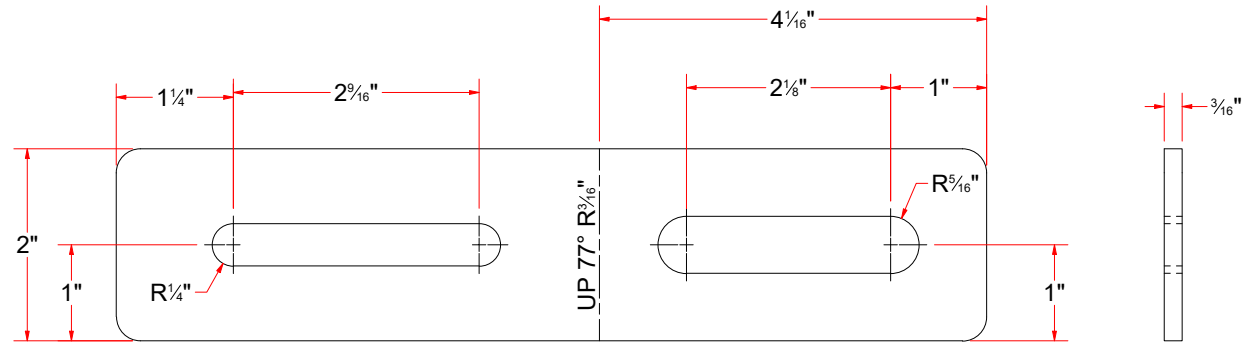
EST WEIGHT:

SHEET 43 of 45

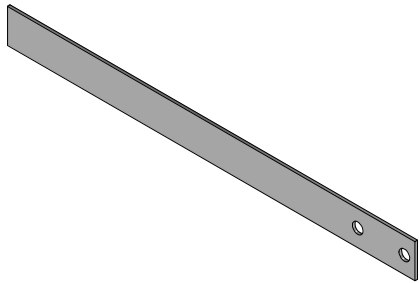
PATH: L:\Designs\Product Lines\Tommy Car Wash\1. TOMMY PRODUCTIVITY\Tire Shine\Tire Shine Manifold Assembly\TB2M-CUS999-0417 - Tommy Manifold Assembly, with Cover\Parts\TB2MB-CUS999-0417 - Polycarbonate Tire Shine Brush Cover.ipt



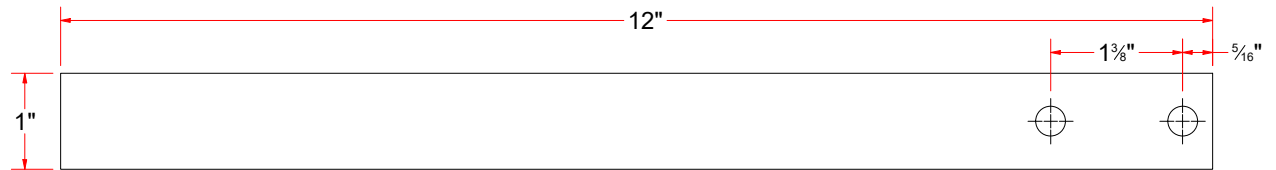
TB2MC-CUS999-0417 - Manifold Bracket



Flat Pattern



TB2ME-CUS999-0417
Sheet Metal #14Ga x 12" x 1"



Top



Side



AVW EQUIPMENT CO., INC.
105 S. 9TH AVENUE
MAYWOOD, IL 60153
Tel: 708-343-7738 Fax: 708-343-9065
WWW.AVWEQUIPMENT.COM

DRAWN BY

Ljubomir

CUSTOMER: AVW Equipment

CHECKED BY

PROJECT: Tire Shine

QTY

DESCRIPTION: Manifold Bracket

- COMPANY PROPRIETARY NOTE -

THIS DRAWING AND ITS DESIGNS ARE PROPERTY OF AVW EQUIPMENT CO. & IT IS NOT TO BE USED OR REPRODUCED WITHOUT THE PERMISSION FROM AVW CO.

RELEASE DATE

8/7/2021

PART NUMBER: TB2MC-CUS999-0417

REV#

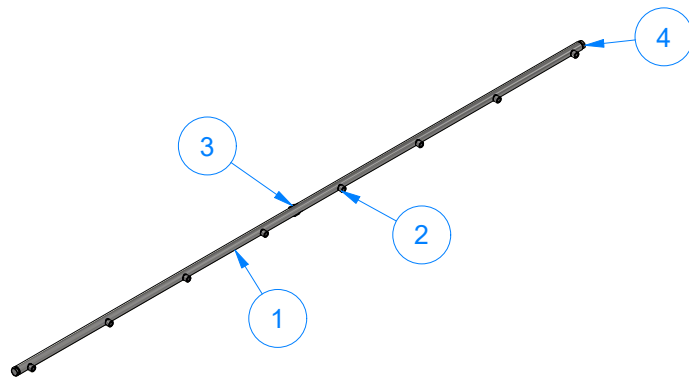
DIMENSION ARE IN INCHES & PROVIDED PRIOR TO SURFACE TREATMENTS, UNLESS NOTED.

SIZE
A

EST WEIGHT:

SHEET 44 of 45

PATH: L:\Designs\Product Lines\Tommy Car Wash\1. TOMMY PRODUCTIVITY\Tire Shine\Tire Shine Manifold Assembly\TB2MC-CUS999-0417 - Tommy Manifold Assembly, with Cover\Parts\TB2MC-CUS999-0417 - Manifold Bracket.ipt

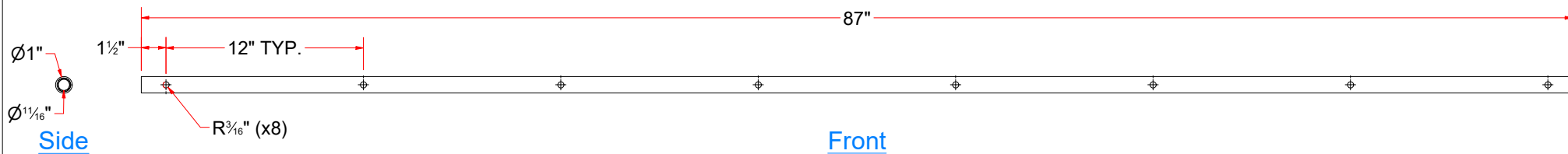


| Parts List | | | |
|------------|-----|--|--------------------|
| ITEM | QTY | DESCRIPTION | PART NUMBER |
| 1 | 1 | Round Tubing .12 WALL x 1" O.D. x 87" LG. | TB2MAA-CUS999-0417 |
| 2 | 8 | 1/4" Half Coupling | HC304025 |
| 3 | 1 | 1/2" Half Coupling | HC304050 |
| 4 | 2 | 1/2" NPT Stainless Steel Hex Head Solid Plug | PLUG304050-HEX |

TB2MA-CUS999-0417
Tire Dressing Manifold, Spray Style Tube, 8 Manifolds



TB2MAA-CUS999-0417 - Round Tubing .12 WALL x 1" O.D. x 87" LG.



AVW EQUIPMENT CO., INC.
105 S. 9TH AVENUE
MAYWOOD, IL 60153
Tel: 708-343-7738 Fax: 708-343-9065
WWW.AVWEQUIPMENT.COM

- COMPANY PROPRIETARY NOTE -
THIS DRAWING AND ITS DESIGNS ARE PROPERTY OF AVW EQUIPMENT CO. &
IT IS NOT TO BE USED OR REPRODUCED WITHOUT THE PERMISSION FROM AVW CO.

| | | | |
|---|----------|--|----------------|
| DRAWN BY | Ljubomir | CUSTOMER: AVW Equipment | |
| CHECKED BY | | PROJECT: Tire Shine | |
| QTY | | DESCRIPTION: Tire Dressing Manifold, Spray Style Tube, 8 Manifolds | |
| RELEASE DATE | 8/7/2021 | PART NUMBER: TB2MA-CUS999-0417 | REV# |
| DIMENSION ARE IN INCHES & PROVIDED PRIOR TO SURFACE TREATMENTS, UNLESS NOTED. | | SIZE A | EST WEIGHT: |
| | | | SHEET 45 of 45 |

PATH:L:\Libraries\Productivity\Tire Washer\Manifolds\TB2MAA-CUS999-0417 - Tire Dressing Manifold, Spray Style Tube, 8 Manifolds\TB2MAA-CUS999-0417 - Tire Dressing Manifold, Spray Style Tube, 8 Manifolds.iam