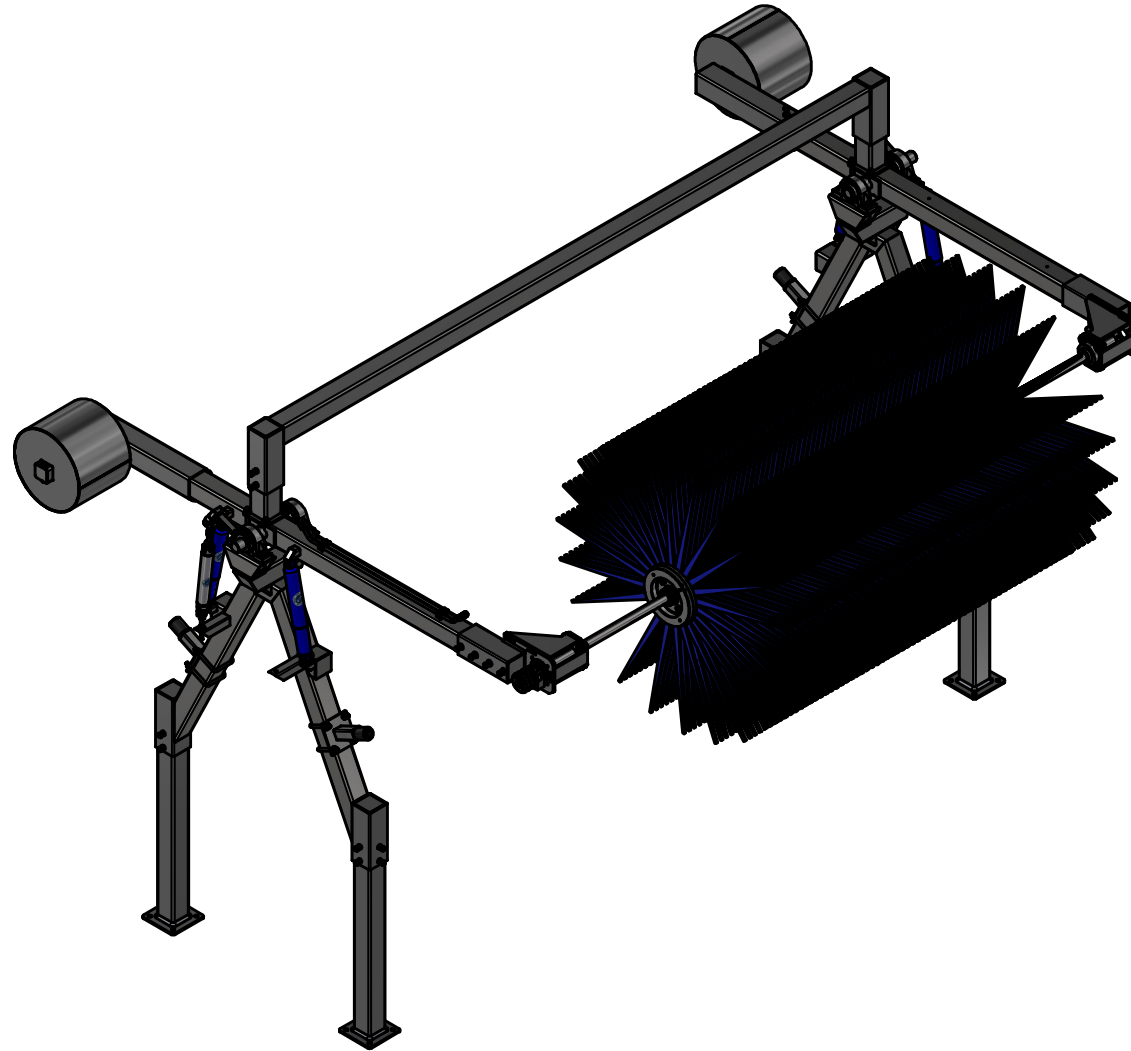


TR4

Dual Arm Top Brush Hydraulic



AVW EQUIPMENT CO., INC.
105 S. 9TH AVENUE
MAYWOOD, IL 60153
Tel: 708-343-7738 Fax: 708-343-9065
WWW.AVWEQUIPMENT.COM

- COMPANY PROPRIETARY NOTE -

THIS DRAWING AND ITS DESIGNS ARE PROPERTY OF AVW EQUIPMENT CO. &
IT IS NOT TO BE USED OR REPRODUCED WITHOUT THE PERMISSION FROM AVW CO.

DRAWN BY

Jibin

CUSTOMER: AVW EQUIPMENT CO.

CHECKED BY

PROJECT: TR4- Dual Arm Top Brush Hydraulic

QTY

DESCRIPTION: Dual Arm Top Brush Hydraulic

RELEASE
DATE

7/19/2022

PART NUMBER: TR4

REV# 02

DIMENSION ARE IN INCHES & PROVIDED PRIOR
TO SURFACE TREATMENTS, UNLESS NOTED.

SIZE
A


EST WEIGHT:

SHEET 1 of 43

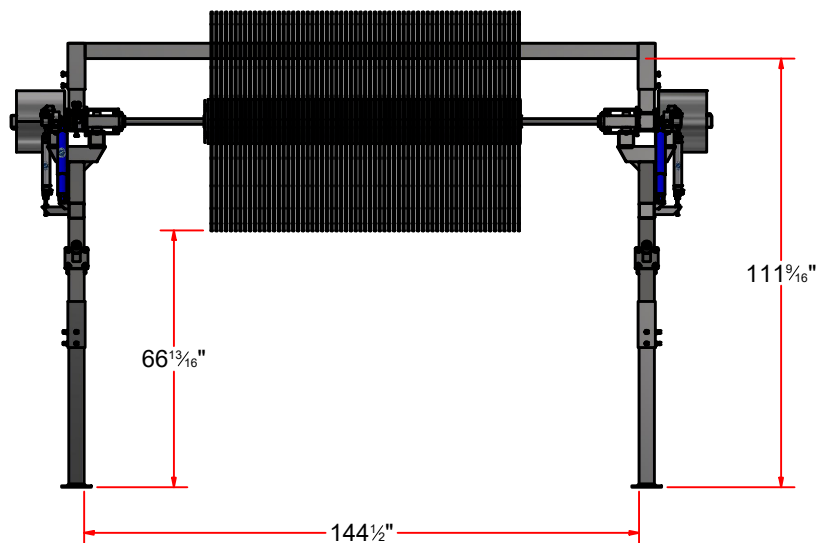
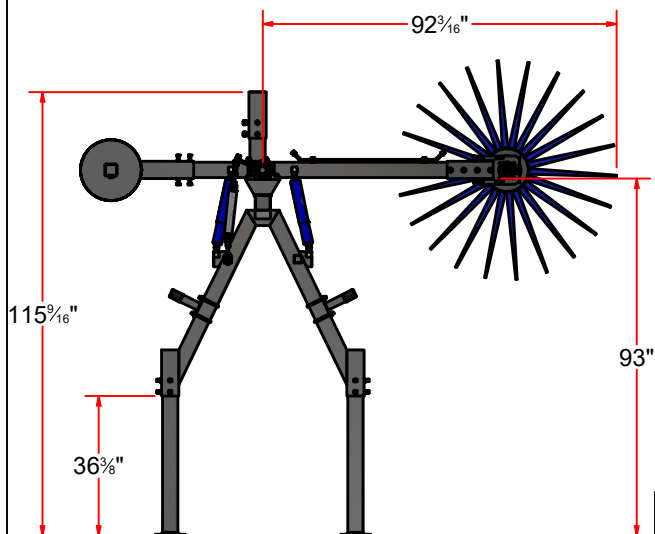
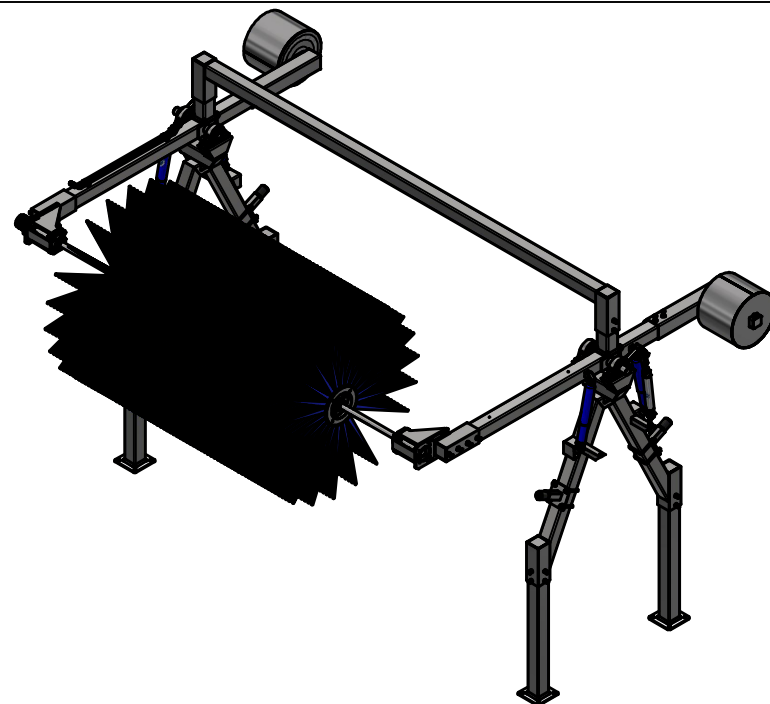
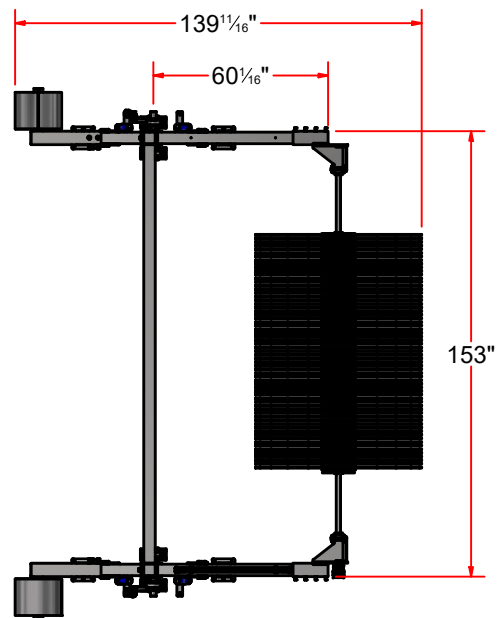
PATH:L:\Designs\Product Lines\TB - Top Brush\TR4 - Dual Arm Top Brush\TR4- Dual Arm Top Brush Hydraulic.iam

REVISION HISTORY

ECO No.	REV	DESCRIPTION	DATE	ENGINEER	APPROVED
		INITIAL RELEASE	08/12/2021	Tittu	Dusan
CON12	01	1. Replaced motor mount with new universal motor mount 2. Changed shaft length to 137.5 in to match with new universal motor mount	12/27/2021	Tittu	Dusan
CON14	02	1. Motor Mount changed to inline motor mount with new part number TR4GA-IL	7/19/2022	Jibin	Cedric
CON15	02	1. Changed the shaft length from 137.5" to 140" to unify the length with electric version. Shafts are different though due to the coupling mechanisms.	7/20/2022	Jibin	Cedric

 <p>AVW EQUIPMENT CO., INC. 105 S. 9TH AVENUE MAYWOOD, IL 60153 Tel: 708-343-7738 Fax: 708-343-9065 WWW.AVWEQUIPMENT.COM</p>	DRAWN BY	Jibin	CUSTOMER: AVW EQUIPMENT CO.		
	CHECKED BY		PROJECT: TR4- Dual Arm Top Brush Hydraulic		
	QTY		DESCRIPTION:		
	- COMPANY PROPRIETARY NOTE - <small>THIS DRAWING AND ITS DESIGNS ARE PROPERTY OF AVW EQUIPMENT CO. & IT IS NOT TO BE USED OR REPRODUCED WITHOUT THE PERMISSION FROM AVW CO.</small>		RELEASE DATE	7/19/2022	PART NUMBER:
		<small>DIMENSION ARE IN INCHES & PROVIDED PRIOR TO SURFACE TREATMENTS, UNLESS NOTED.</small>		SIZE A	EST WEIGHT:
PATH:				REV# 02	SHEET 2 of 43

TR4 Dual Arm Top Brush Hydraulic



AVW EQUIPMENT CO., INC.
105 S. 9TH AVENUE
MAYWOOD, IL 60153
Tel: 708-343-7738 Fax: 708-343-9065
WWW.AVWEQUIPMENT.COM

- COMPANY PROPRIETARY NOTE -

THIS DRAWING AND ITS DESIGNS ARE PROPERTY OF AVW EQUIPMENT CO. & IT IS NOT TO BE USED OR REPRODUCED WITHOUT THE PERMISSION FROM AVW CO.

DRAWN BY

Jibin

CUSTOMER: AVW EQUIPMENT CO.

CHECKED BY

PROJECT: TR4- Dual Arm Top Brush Hydraulic

QTY

DESCRIPTION: Dual Arm Top Brush Hydraulic

RELEASE DATE

7/19/2022

PART NUMBER: TR4- Dual Arm Top Brush Hydraulic Rev1 REV# 02

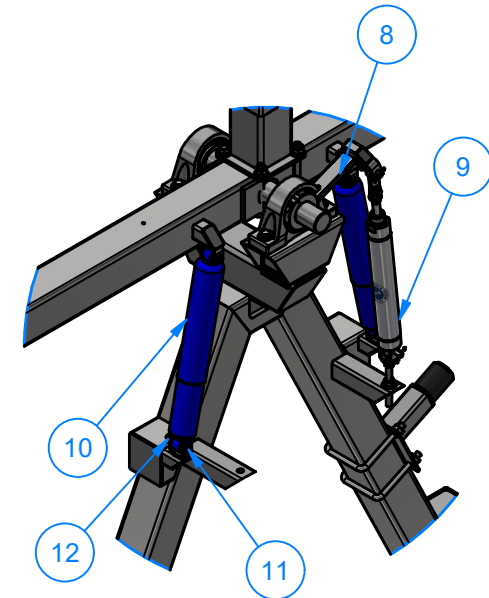
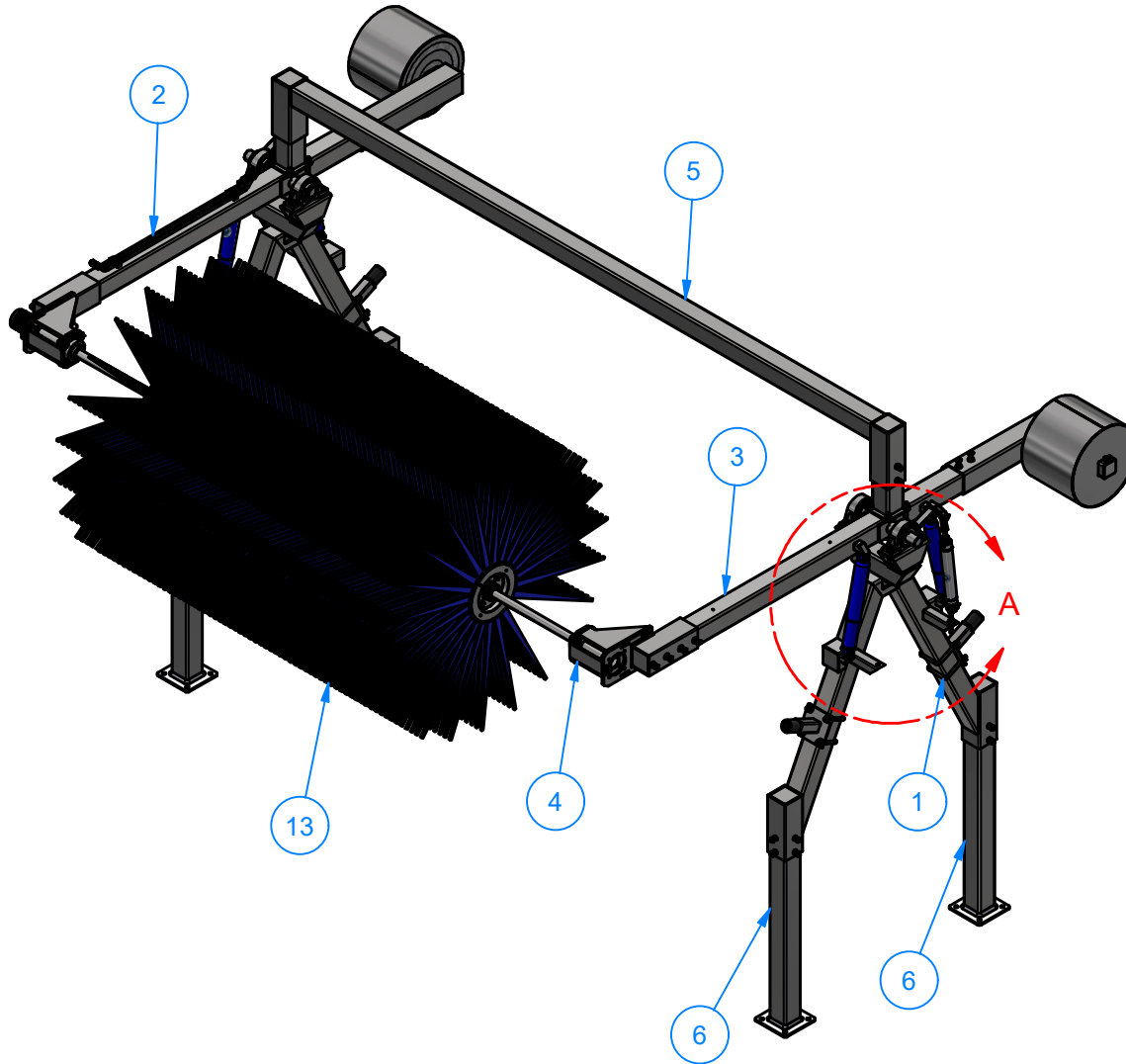
DIMENSION ARE IN INCHES & PROVIDED PRIOR TO SURFACE TREATMENTS, UNLESS NOTED.

SIZE A

EST WEIGHT:

SHEET 3 of 43

TR4 Dual Arm Top Brush Hydraulic



DETAIL A

Parts List			
ITEM	PART NUMBER	QTY	DESCRIPTION
1	TR1B0513	2	Top Brush Penta Arch
2	TR1C0304	1	Top Brush Arm [D]108 LG.[HYD]
3	TR3C0304	1	Top Brush Arm [P]108 LG.
4	TR4G	1	Shaft Assembly With Parts
5	TR3B	1	Dual Arm Top Brush Crossbar
6	TR1A	4	Top Brush Leg Weldment
7	TR1ACF0304	1	Air Cylinder Front Mount Dr Side
8	TR1ACF1119	1	Air Cylinder Front Mount Pr Side
9	TR1R	2	Retract Air Cylinder 2" x 10" (OPTIONAL)
10	WA1FA	4	Blue Shock Absorber Assembly
11	P3825	8	Pin 3/8" x 2 1/2" LG
12	WA1FC	8	3/8" Set Screw Collar
13	TR1H	1	Top Brush w/ Core



AVW EQUIPMENT CO., INC.
105 S. 9TH AVENUE
MAYWOOD, IL 60153
Tel: 708-343-7738 Fax: 708-343-9065
WWW.AVWEQUIPMENT.COM

- COMPANY PROPRIETARY NOTE -

THIS DRAWING AND ITS DESIGNS ARE PROPERTY OF AVW EQUIPMENT CO. & IT IS NOT TO BE USED OR REPRODUCED WITHOUT THE PERMISSION FROM AVW CO.

DRAWN BY

Jibin

CUSTOMER: AVW EQUIPMENT CO.

CHECKED BY

PROJECT: TR4- Dual Arm Top Brush Hydraulic

QTY

DESCRIPTION: Dual Arm Top Brush Hydraulic

RELEASE DATE

7/19/2022

PART NUMBER: TR4

REV# 02

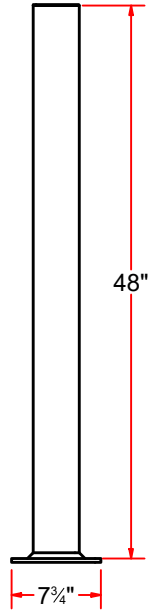
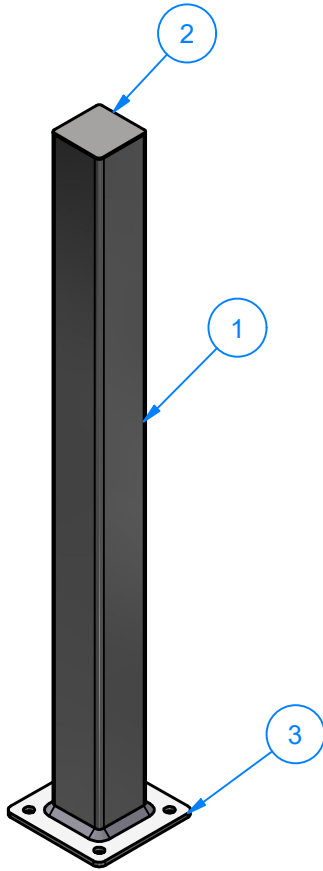
DIMENSION ARE IN INCHES & PROVIDED PRIOR TO SURFACE TREATMENTS, UNLESS NOTED.

SIZE
A

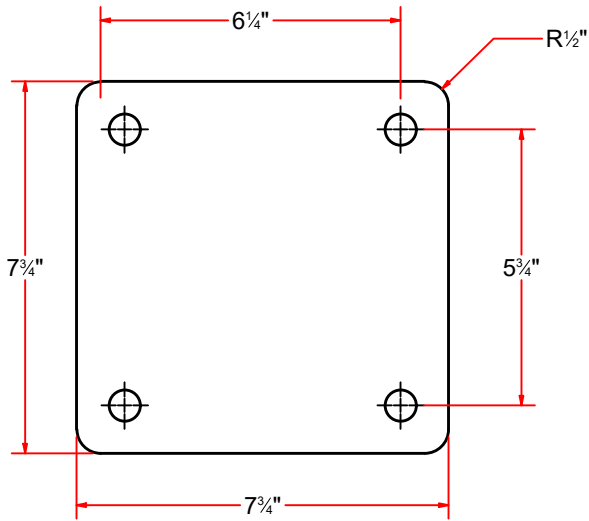
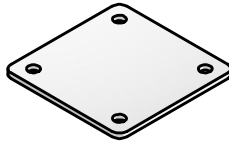
EST WEIGHT:

SHEET 4 of 43

TR1A
Top Brush Leg Weldment



PLSS313X0775X0775X4H
Sq. Base Plate #5/16 x 7 3/4"



Parts List			
ITEM	PART NUMBER	QTY	DESCRIPTION
1	SQTSS188X400X04800	1	Sq. Tube #7Gax4"x 4" x 48" LG
2	PLSS14GX0400X0400X0H	1	Sq. SS Plate 14Ga x 3 15/16
3	PLSS313X0775X0775X4H	1	Sq. Base Plate #5/16 x 7 3/4"



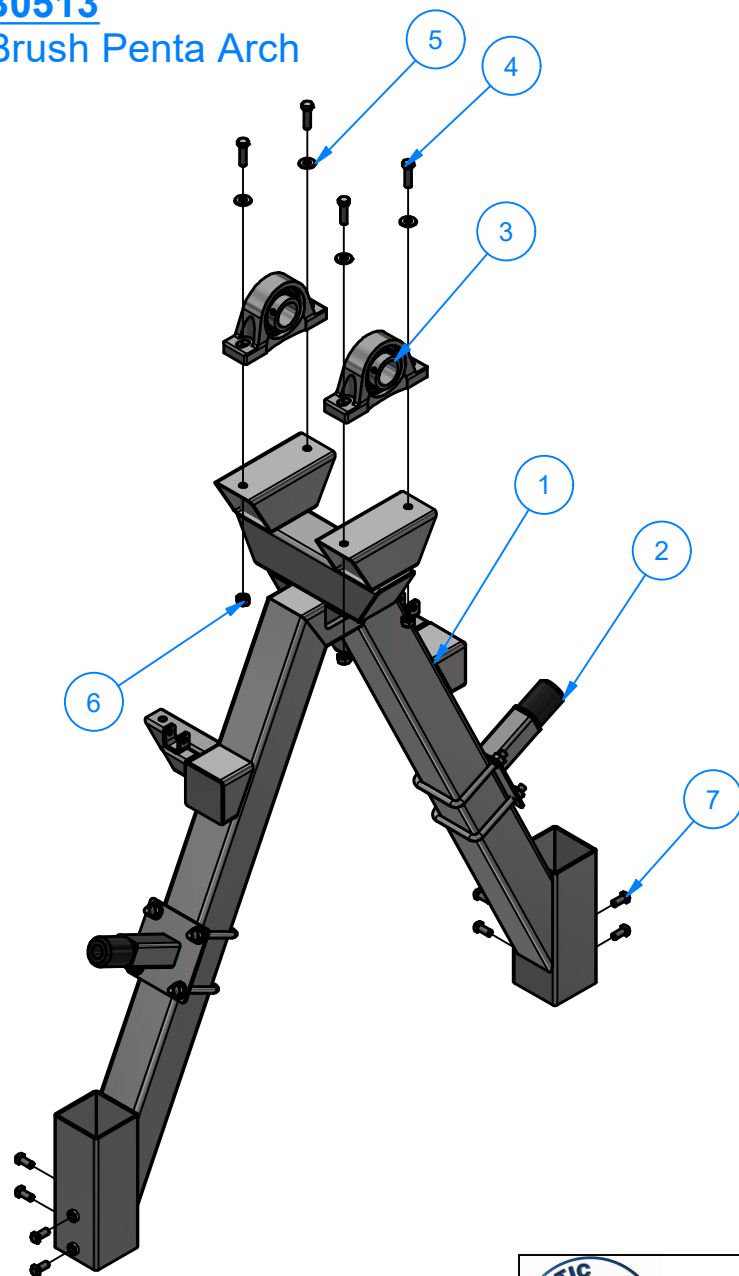
AVW EQUIPMENT CO., INC.
105 S. 9TH AVENUE
MAYWOOD, IL 60153
Tel: 708-343-7738 Fax: 708-343-9065
WWW.AVWEQUIPMENT.COM

- COMPANY PROPRIETARY NOTE -
THIS DRAWING AND ITS DESIGNS ARE PROPERTY OF AVW EQUIPMENT CO. &
IT IS NOT TO BE USED OR REPRODUCED WITHOUT THE PERMISSION FROM AVW CO.

DRAWN BY	Jibin	CUSTOMER: AVW EQUIPMENT CO.	
CHECKED BY		PROJECT: TR4- Dual Arm Top Brush Hydraulic	
QTY		DESCRIPTION: Dual Arm Top Brush Hydraulic	
RELEASE DATE	7/19/2022	PART NUMBER: TR4- Dual Arm Top Brush Hydraulic	Rev1 REV# 02
DIMENSION ARE IN INCHES & PROVIDED PRIOR TO SURFACE TREATMENTS, UNLESS NOTED.		SIZE A	EST WEIGHT: SHEET 5 of 43

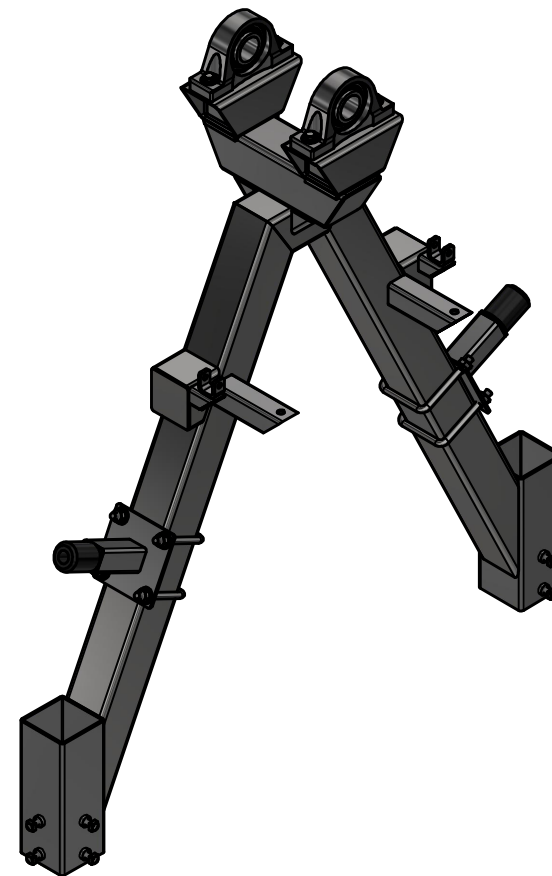
TR1B0513

Top Brush Penta Arch



Parts List

ITEM	PART NUMBER	QTY	DESCRIPTION
1	TR1BA0513	1	Top Brush Beam Weldment
2	TR1DB0304	2	Top Brush Bumper Assembly
3	BRG-WA1WB-SS	2	2" Pillow Block
4	HHCS1213175	4	1/2"-13 x 1 3/4" L Hex Screw
5	FW12	4	1/2" Flat Washer
6	HN1213	4	1/2-13 Heavy Hex Nut
7	SQHS1213100	8	Square Bolt - 1/2"-13 UNC x 1"



AVW EQUIPMENT CO., INC.
105 S. 9TH AVENUE
MAYWOOD, IL 60153
Tel: 708-343-7738 Fax: 708-343-9065
WWW.AVWEQUIPMENT.COM

- COMPANY PROPRIETARY NOTE -

THIS DRAWING AND ITS DESIGNS ARE PROPERTY OF AVW EQUIPMENT CO. & IT IS NOT TO BE USED OR REPRODUCED WITHOUT THE PERMISSION FROM AVW CO.

DRAWN BY

Jibin

CUSTOMER: AVW EQUIPMENT CO.

CHECKED BY

PROJECT: TR4- Dual Arm Top Brush Hydraulic

QTY

DESCRIPTION: Dual Arm Top Brush Hydraulic

RELEASE DATE

7/19/2022

PART NUMBER: TR4- Dual Arm Top Brush Hydraulic Rev1 REV# 02

DIMENSION ARE IN INCHES & PROVIDED PRIOR TO SURFACE TREATMENTS, UNLESS NOTED.

SIZE
A

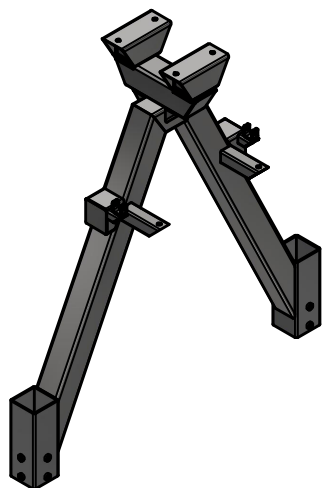
EST WEIGHT:

SHEET 6 of 43

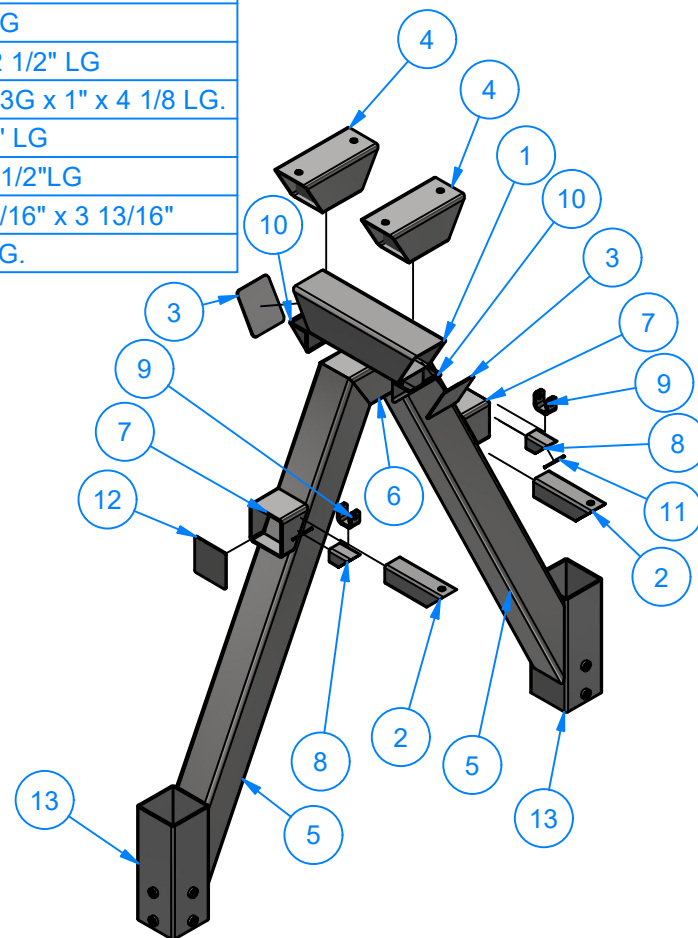
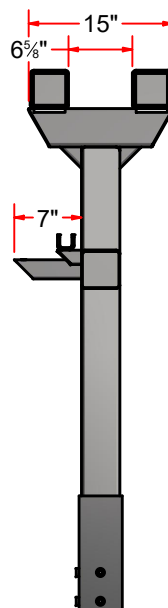
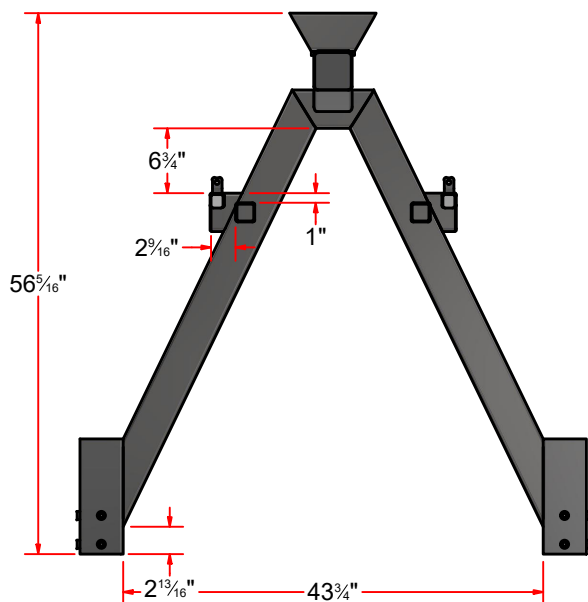
PATH:L:\Designs\Product Lines\TB - Top Brush\TR4 - Dual Arm Top Brush\2D Drawing\TR4- Dual Arm Top Brush Hydraulic Rev1.dwg

TR1BA0513

Top Brush Beam Weldment



Parts List			
ITEM	PART NUMBER	QTY	DESCRIPTION
1	TR1BAA0513	1	Sq. Tube#7Gax4" x 15" LG
2	TR1BAC0513	2	Sq. Tube#11Gax 2" x 7" LG
3	PLSS12GX0443X0381	2	SS Sheet Metal #12Ga x 4 7/16" x 3 13/16"
4	TR1BAE0513	2	Pillow Block Bracket
5	TR1BAF0513	2	Sq. Tube #7Gax4" x 49" LG
6	TR1BAG0513	1	Sq. Tube#7Gax 4" x 8.5 "LG
7	TR1BAD0513	2	Sq. Tube #7G 4"x 3 1/4" LG
8	TR1BAB0513	2	Sq. Tube #11Gx 1 1/2" x 2 1/2" LG
9	SAB4	2	Shock Absorber Bracket #3G x 1" x 4 1/8 LG.
10	TR1BAH0513	2	Sq. Tube#7Gax4"x 3 3/16" LG
11	PLSS12GX0200X0125X0H	2	SS Plate #12Ga 1 7/8"x 1 1/2"LG
12	PLSS12GX0381X0381	2	Sheet Metal #12Ga x 3 13/16" x 3 13/16"
13	AA0BA	2	Sleeve 4 1/2" SQ. x 12" LG.



AVW EQUIPMENT CO., INC.
105 S. 9TH AVENUE
MAYWOOD, IL 60153
Tel: 708-343-7738 Fax: 708-343-9065
WWW.AVWEQUIPMENT.COM

- COMPANY PROPRIETARY NOTE -

THIS DRAWING AND ITS DESIGNS ARE PROPERTY OF AVW EQUIPMENT CO. & IT IS NOT TO BE USED OR REPRODUCED WITHOUT THE PERMISSION FROM AVW CO.

DRAWN BY

Jibin

CUSTOMER: AVW EQUIPMENT CO.

CHECKED BY

PROJECT: TR4- Dual Arm Top Brush Hydraulic

QTY

DESCRIPTION: Dual Arm Top Brush Hydraulic

RELEASE DATE

7/19/2022

PART NUMBER: TR4- Dual Arm Top Brush Hydraulic Rev1 REV# 02

DIMENSION ARE IN INCHES & PROVIDED PRIOR TO SURFACE TREATMENTS, UNLESS NOTED.

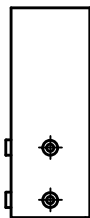
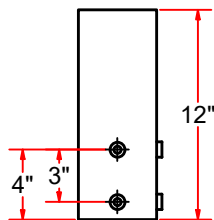
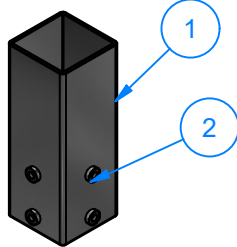
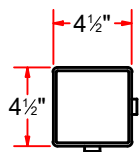
SIZE A

EST WEIGHT:

SHEET 7 of 43

AA0BA

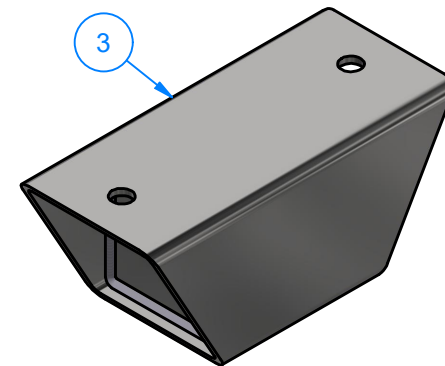
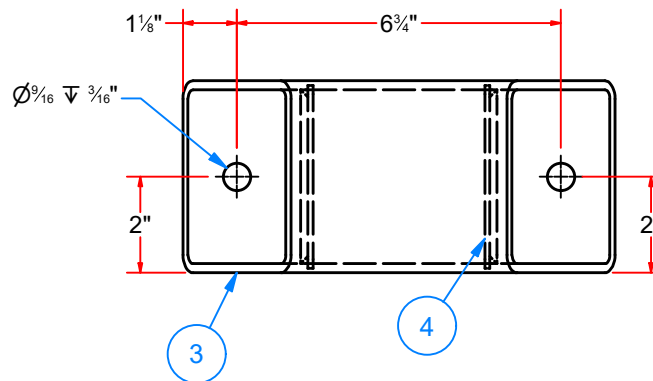
Sleeve 4 1/2" SQ. x 12" LG.



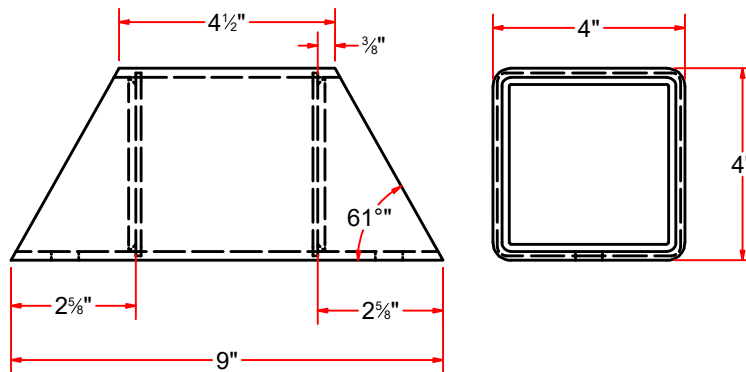
Parts List			
ITEM	PART NUMBER	QTY	DESCRIPTION
1	AA0BAA	1	Sq. Tubing [7 Ga.] 4 1/2" x 12" LG
2	SLN12	4	Sleeve Nut 1/2"

TR1BAE0513

Pillow Block Bracket



Parts List			
ITEM	PART NUMBER	QTY	DESCRIPTION
3	TR1BAEA0513	1	Sq. Tube#7Gax 4" x 9" LG
4	PLSS12GX0381X0381	2	Sheet Metal #12Ga x 3 13/16" x 3 13/16"



AVW EQUIPMENT CO., INC.
105 S. 9TH AVENUE
MAYWOOD, IL 60153
Tel: 708-343-7738 Fax: 708-343-9065
WWW.AVWEQUIPMENT.COM

- COMPANY PROPRIETARY NOTE -

THIS DRAWING AND ITS DESIGNS ARE PROPERTY OF AVW EQUIPMENT CO. & IT IS NOT TO BE USED OR REPRODUCED WITHOUT THE PERMISSION FROM AVW CO.

DRAWN BY

Jibin

CUSTOMER: AVW EQUIPMENT CO.

CHECKED BY

PROJECT: TR4- Dual Arm Top Brush Hydraulic

QTY

DESCRIPTION: Dual Arm Top Brush Hydraulic

RELEASE DATE

7/19/2022

PART NUMBER: TR4- Dual Arm Top Brush Hydraulic Rev1 REV# 02

DIMENSION ARE IN INCHES & PROVIDED PRIOR TO SURFACE TREATMENTS, UNLESS NOTED.

SIZE
A

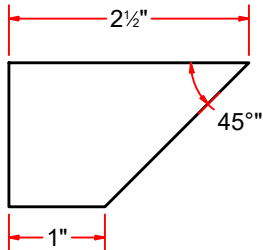
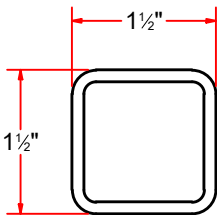
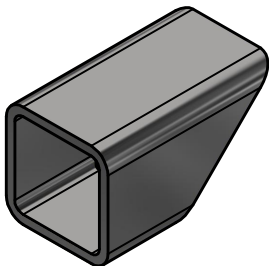
EST WEIGHT:

SHEET 8 of 43

PATH:L:\Designs\Product Lines\TB - Top Brush\TR4 - Dual Arm Top Brush\2D Drawing\TR4- Dual Arm Top Brush Hydraulic Rev1.dwg

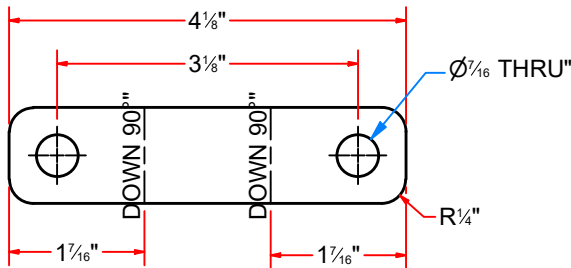
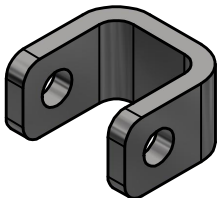
TR1BAB0513

Sq. Tube #11Gx 1 1/2" x 2 1/2" LG



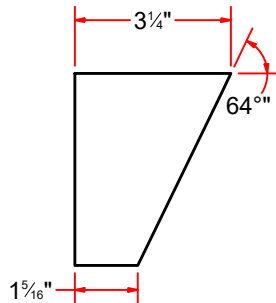
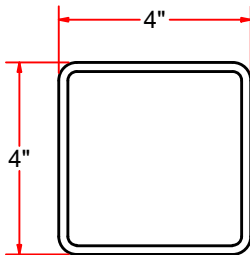
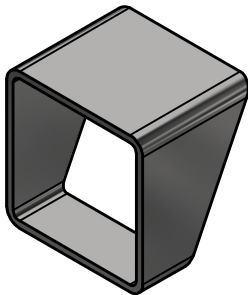
SAB4

Shock Absorber Bracket #3G x 1" x 4 1/8 LG.



TR1BAD0513

Sq. Tube #7G 4"x 3 1/4" LG



AVW EQUIPMENT CO., INC.
105 S. 9TH AVENUE
MAYWOOD, IL 60153
Tel: 708-343-7738 Fax: 708-343-9065
WWW.AVWEQUIPMENT.COM

- COMPANY PROPRIETARY NOTE -
THIS DRAWING AND ITS DESIGNS ARE PROPERTY OF AVW EQUIPMENT CO. &
IT IS NOT TO BE USED OR REPRODUCED WITHOUT THE PERMISSION FROM AVW CO.

DRAWN BY

Jibin

CUSTOMER: AVW EQUIPMENT CO.

CHECKED BY

PROJECT: TR4- Dual Arm Top Brush Hydraulic

QTY

DESCRIPTION: Dual Arm Top Brush Hydraulic

RELEASE
DATE

7/19/2022

PART NUMBER: TR4- Dual Arm Top Brush Hydraulic Rev1 REV# 02

DIMENSION ARE IN INCHES & PROVIDED PRIOR
TO SURFACE TREATMENTS, UNLESS NOTED.

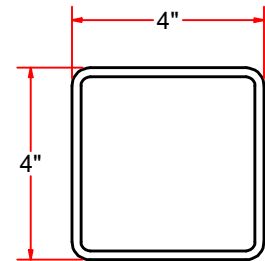
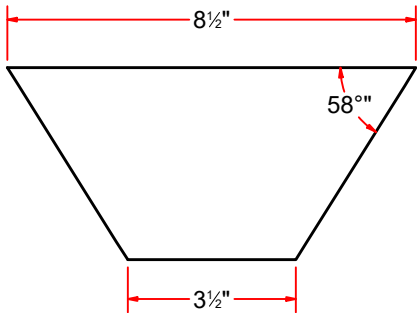
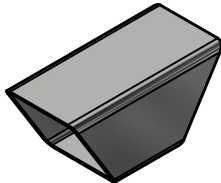
SIZE
A

EST WEIGHT:

SHEET 9 of 43

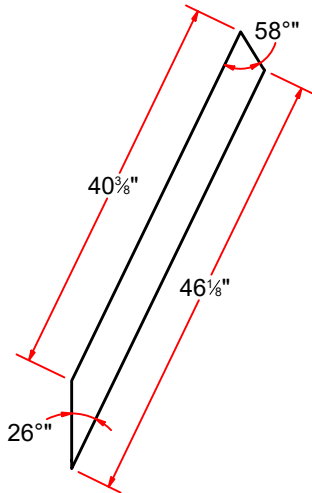
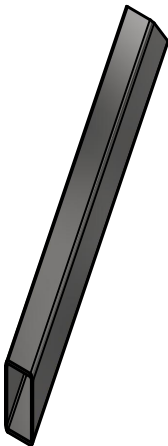
TR1BAG0513

Sq. Tube#7Gax 4" x 8.5 "LG



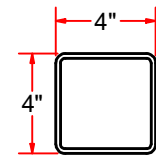
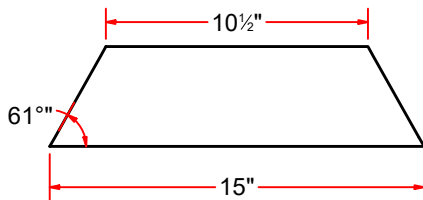
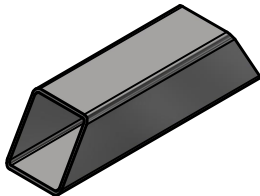
TR1BAF0513

Sq. Tube #7Gax 4" x 49" LG



TR1BAA0513

Sq. Tube#7Gax 4" x 15" LG



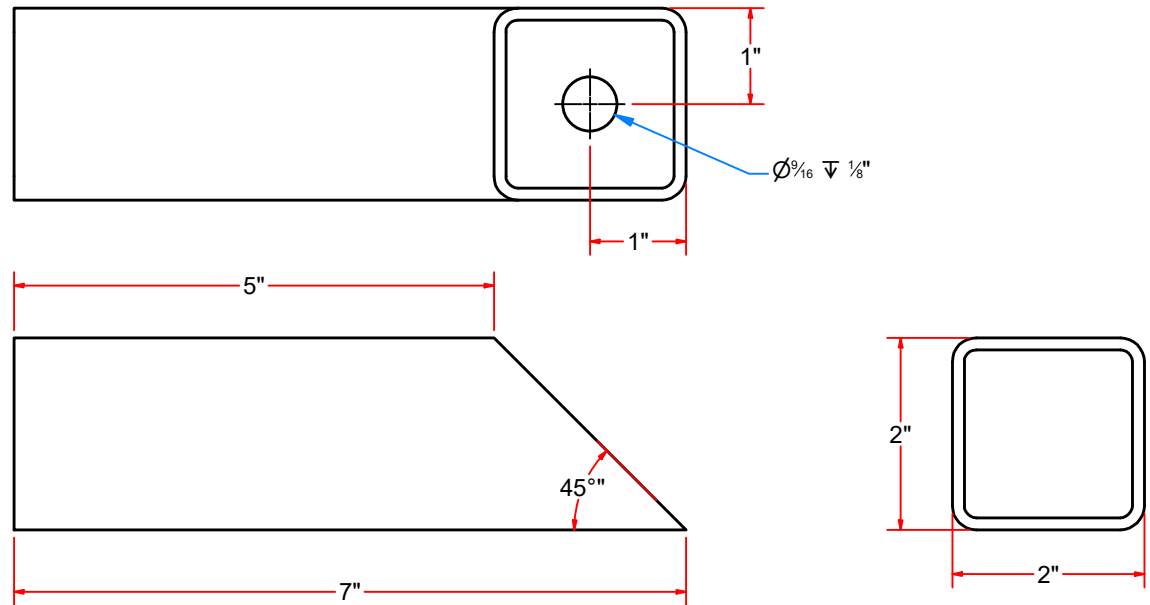
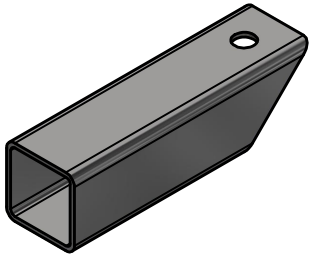
AVW EQUIPMENT CO., INC.
105 S. 9TH AVENUE
MAYWOOD, IL 60153
Tel: 708-343-7738 Fax: 708-343-9065
WWW.AVWEQUIPMENT.COM

- COMPANY PROPRIETARY NOTE -
THIS DRAWING AND ITS DESIGNS ARE PROPERTY OF AVW EQUIPMENT CO. &
IT IS NOT TO BE USED OR REPRODUCED WITHOUT THE PERMISSION FROM AVW CO.

DRAWN BY	Jibin	CUSTOMER: AVW EQUIPMENT CO.	
CHECKED BY		PROJECT: TR4- Dual Arm Top Brush Hydraulic	
QTY		DESCRIPTION: Dual Arm Top Brush Hydraulic	
RELEASE DATE	7/19/2022	PART NUMBER: TR4- Dual Arm Top Brush Hydraulic	Rev1 REV# 02
DIMENSION ARE IN INCHES & PROVIDED PRIOR TO SURFACE TREATMENTS, UNLESS NOTED.		SIZE A	EST WEIGHT: SHEET 10 of 43

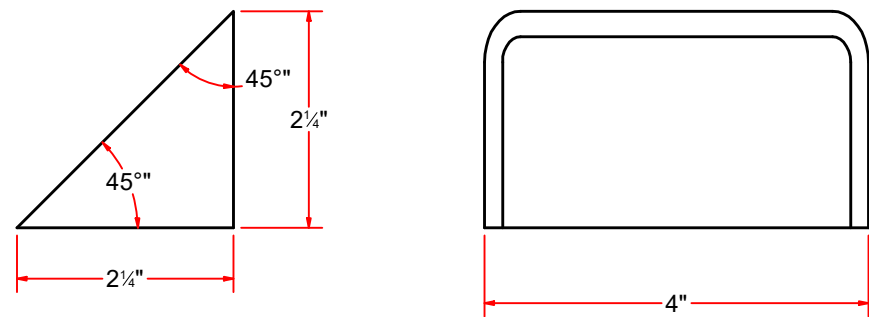
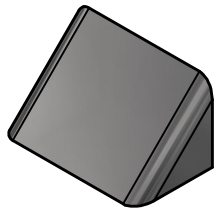
TR1BAC0513

Sq. Tube#11Gax 2" x 7" LG



TR1BAH0513

Sq. Tube#7Gax 4"x 3 3/16" LG



AVW EQUIPMENT CO., INC.
105 S. 9TH AVENUE
MAYWOOD, IL 60153
Tel: 708-343-7738 Fax: 708-343-9065
WWW.AVWEQUIPMENT.COM

- COMPANY PROPRIETARY NOTE -

THIS DRAWING AND ITS DESIGNS ARE PROPERTY OF AVW EQUIPMENT CO. & IT IS NOT TO BE USED OR REPRODUCED WITHOUT THE PERMISSION FROM AVW CO.

DRAWN BY

Jibin

CUSTOMER: AVW EQUIPMENT CO.

CHECKED BY

PROJECT: TR4- Dual Arm Top Brush Hydraulic

QTY

DESCRIPTION: Dual Arm Top Brush Hydraulic

RELEASE DATE

7/19/2022

PART NUMBER: TR4- Dual Arm Top Brush Hydraulic Rev1 REV# 02

DIMENSION ARE IN INCHES & PROVIDED PRIOR TO SURFACE TREATMENTS, UNLESS NOTED.

SIZE A

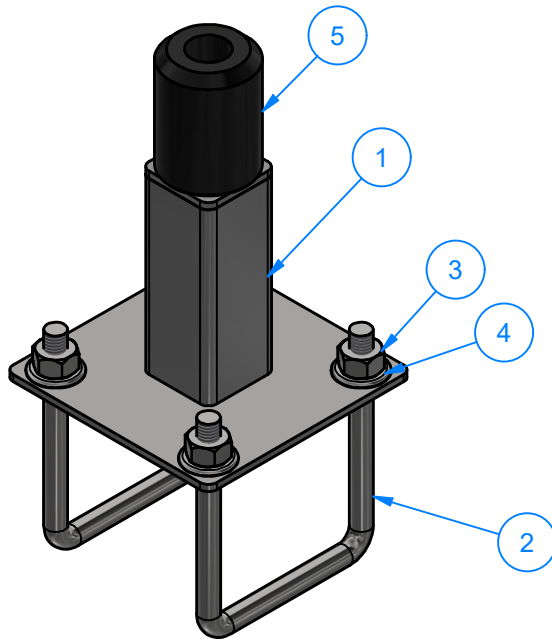
EST WEIGHT:

SHEET 11 of 43

PATH:L:\Designs\Product Lines\TB - Top Brush\TR4 - Dual Arm Top Brush\2D Drawing\TR4- Dual Arm Top Brush Hydraulic Rev1.dwg

TR1DB0304

Top Brush Bumper Assembly



Parts List

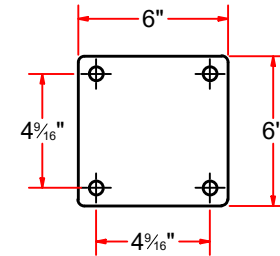
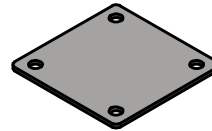
ITEM	PART NUMBER	QTY	DESCRIPTION
1	TR1DBA0304	1	Rubber Stop Weldment
2	UB- SQ050X400X625X1700	2	Square U Bolt D 1/2" x 4" x 6 1/4" LG
3	HN1213	4	1/2-13 Heavy Hex Nut
4	FW12	4	1/2" Flat Washer
5	WA1DBB-0521	1	Rubber Bumper, 3" Long

Parts List

ITEM	PART NUMBER	QTY	DESCRIPTION
6	SQTSS188X200x00500	1	Sq. Tube #7 Ga x 2" x 5" LG
7	PLSS07GX0200X0200X1H	1	Plate #7 Ga x 2" x 2"
8	PLSS07GX0600X0600X4H	1	Plate #7 Ga x 6" x 6"

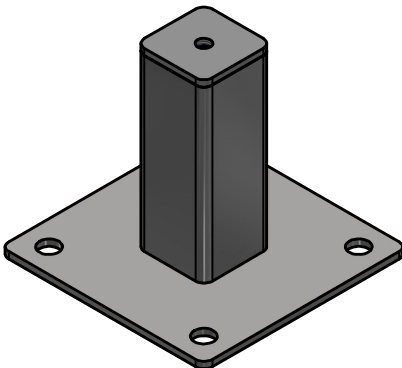
PLSS07GX0600X0600X4H

Plate #7 Ga x 6" x 6"



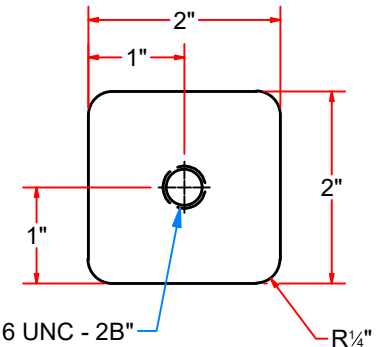
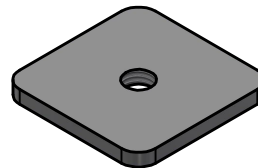
TR1DBA0304

Rubber Stop Weldment



PLSS07GX0200X0200X1H

Plate #7 Ga x 2" x 2"



AVW EQUIPMENT CO., INC.
105 S. 9TH AVENUE
MAYWOOD, IL 60153
Tel: 708-343-7738 Fax: 708-343-9065
WWW.AVWEQUIPMENT.COM

DRAWN BY

Jibin

CUSTOMER: AVW EQUIPMENT CO.

CHECKED BY

PROJECT: TR4- Dual Arm Top Brush Hydraulic

QTY

DESCRIPTION: Dual Arm Top Brush Hydraulic

- COMPANY PROPRIETARY NOTE -

THIS DRAWING AND ITS DESIGNS ARE PROPERTY OF AVW EQUIPMENT CO. & IT IS NOT TO BE USED OR REPRODUCED WITHOUT THE PERMISSION FROM AVW CO.

RELEASE DATE

7/19/2022

PART NUMBER: TR4- Dual Arm Top Brush Hydraulic Rev1 REV# 02

DIMENSION ARE IN INCHES & PROVIDED PRIOR TO SURFACE TREATMENTS, UNLESS NOTED.

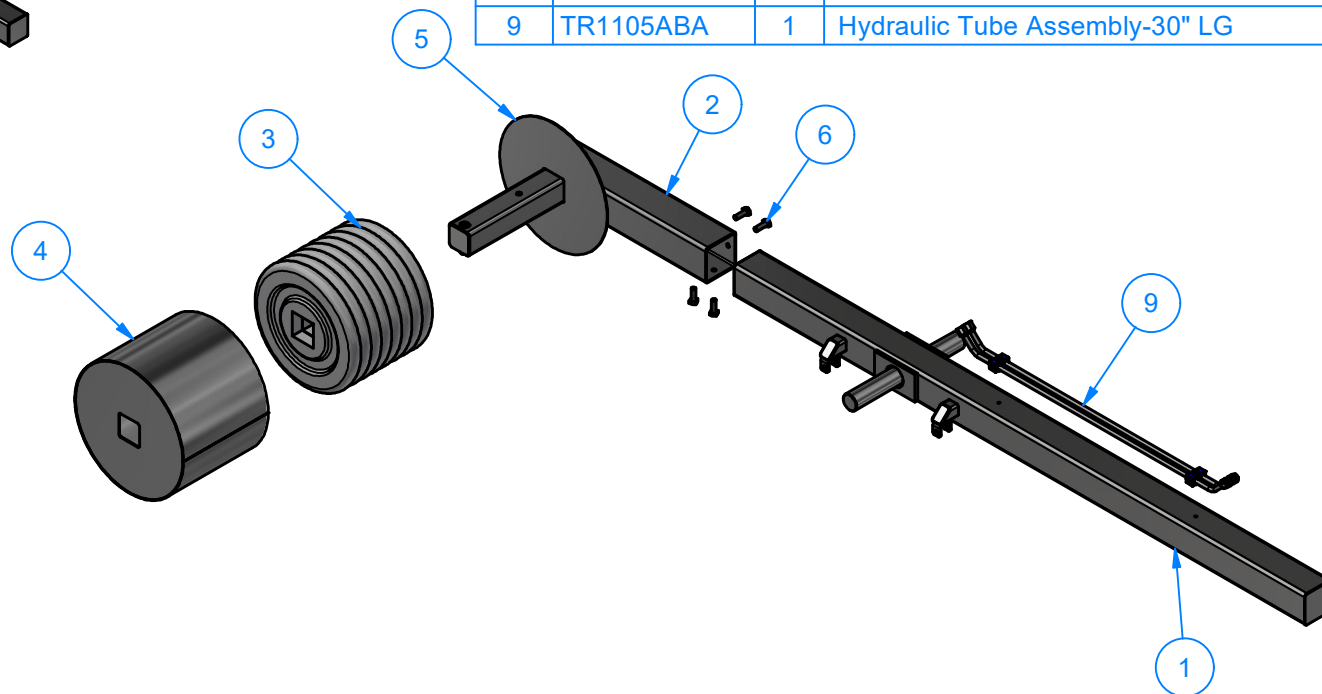
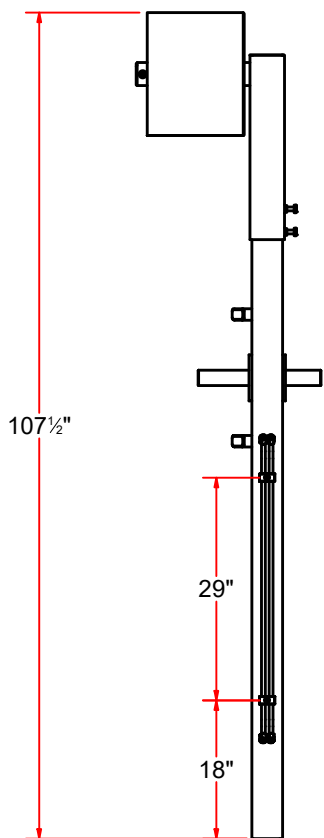
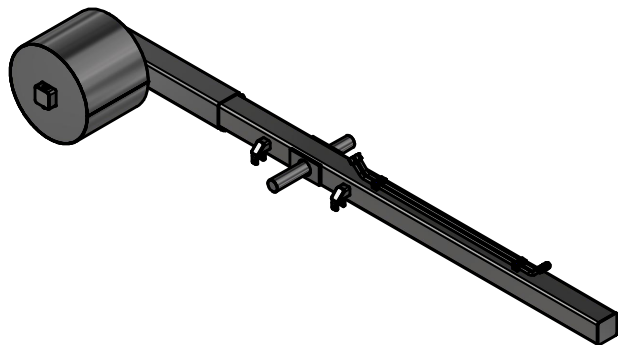
SIZE A

EST WEIGHT:

SHEET 12 of 43

TR1C0304

Top Brush Arm [D]108 LG.[HYD]



Parts List

ITEM	PART NUMBER	QTY	DESCRIPTION
1	TR1CA0304	1	Top Brush Arm
2	TR1D	1	Custom Mounting Bracket for Counterweights
3	TR1F0304-50	8	Counterweight 50 lb
4	TR1FH	1	Top Brush Counterweight Cover
5	TR1FHB	1	ShtMetal#12Ga15 13/16"x3 1/16"
6	SQHS1213150	4	Square Bolt 1/2-13x1.5
7	P1235	1	Pin 1_2 x 3-1_2 (no hole)
8	SSC12	1	1/2" Set Screw Collar
9	TR1105ABA	1	Hydraulic Tube Assembly-30" LG



AVW EQUIPMENT CO., INC.
105 S. 9TH AVENUE
MAYWOOD, IL 60153
Tel: 708-343-7738 Fax: 708-343-9065
WWW.AVWEQUIPMENT.COM

- COMPANY PROPRIETARY NOTE -

THIS DRAWING AND ITS DESIGNS ARE PROPERTY OF AVW EQUIPMENT CO. & IT IS NOT TO BE USED OR REPRODUCED WITHOUT THE PERMISSION FROM AVW CO.

DRAWN BY

Jibin

CUSTOMER: AVW EQUIPMENT CO.

CHECKED BY

PROJECT: TR4- Dual Arm Top Brush Hydraulic

QTY

DESCRIPTION: Top Brush Arm [D]108 LG.[HYD]

RELEASE DATE

7/19/2022

PART NUMBER: TR1C0304

REV# 02

DIMENSION ARE IN INCHES & PROVIDED PRIOR TO SURFACE TREATMENTS, UNLESS NOTED.

SIZE
A

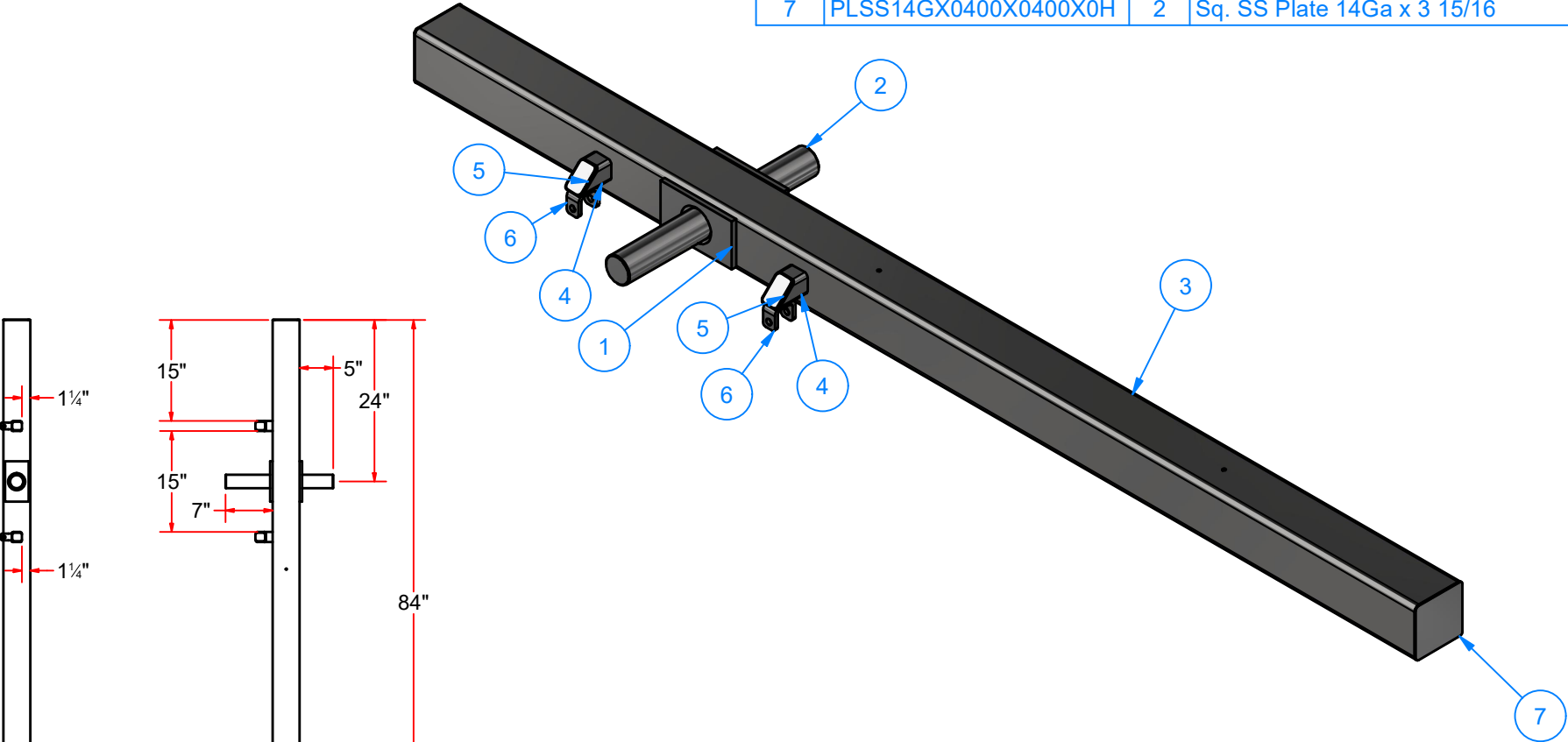
EST WEIGHT:

SHEET 13 of 43

PATH:L:\Libraries\Productivity\Top Brush\Top Brush Arm Assy\TR1C0304.iam

TR1CA0304
Top Brush Arm

Parts List			
ITEM	PART NUMBER	QTY	DESCRIPTION
1	TR1CAA0304	2	Plate #3/8" x 3 1/2" x 6" LG.
2	SHSS200X01600	1	Rod 2" OD x 16" LG.
3	TR1CAD0304	1	Sq. Tube #7Gax4"x84"LG
4	TR1BAB0513	2	Sq. Tube #11Gx 1 1/2" x 2 1/2" LG
5	PLSS12GX0200X0125X0H	2	SS Plate #12Ga 1 7/8"x 1 1/2"LG
6	SAB4	2	Shock Absorber Bracket #3G x 1" x 4 1/8 LG.
7	PLSS14GX0400X0400X0H	2	Sq. SS Plate 14Ga x 3 15/16



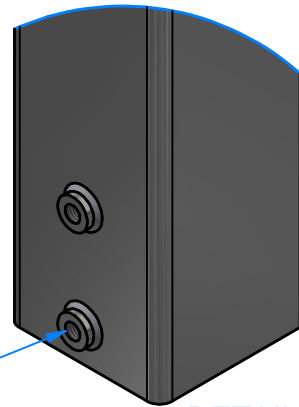
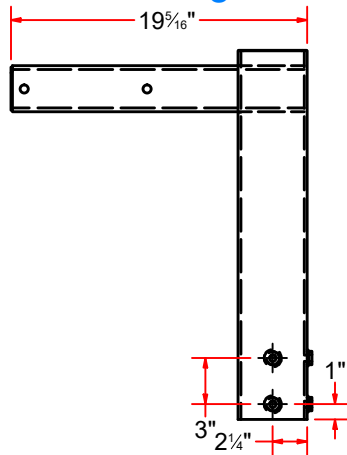
AVW EQUIPMENT CO., INC.
105 S. 9TH AVENUE
MAYWOOD, IL 60153
Tel: 708-343-7738 Fax: 708-343-9065
WWW.AVWEQUIPMENT.COM

- COMPANY PROPRIETARY NOTE -
THIS DRAWING AND ITS DESIGNS ARE PROPERTY OF AVW EQUIPMENT CO. &
IT IS NOT TO BE USED OR REPRODUCED WITHOUT THE PERMISSION FROM AVW CO.

DRAWN BY	Jibin	CUSTOMER: AVW EQUIPMENT CO.	
CHECKED BY		PROJECT: TR4- Dual Arm Top Brush Hydraulic	
QTY		DESCRIPTION: Top Brush Arm	
RELEASE DATE	7/19/2022	PART NUMBER: TR1CA0304	REV# 02
DIMENSION ARE IN INCHES & PROVIDED PRIOR TO SURFACE TREATMENTS, UNLESS NOTED.		SIZE A	EST WEIGHT: SHEET 14 of 43

TR1D

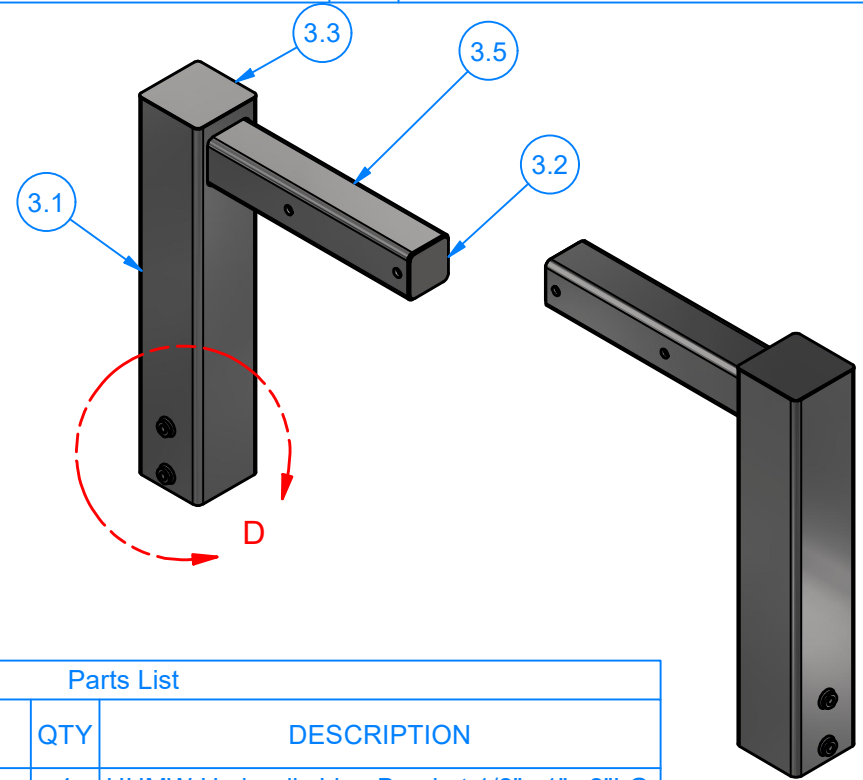
Custom Mounting Bracket for Counterweights



DETAIL D

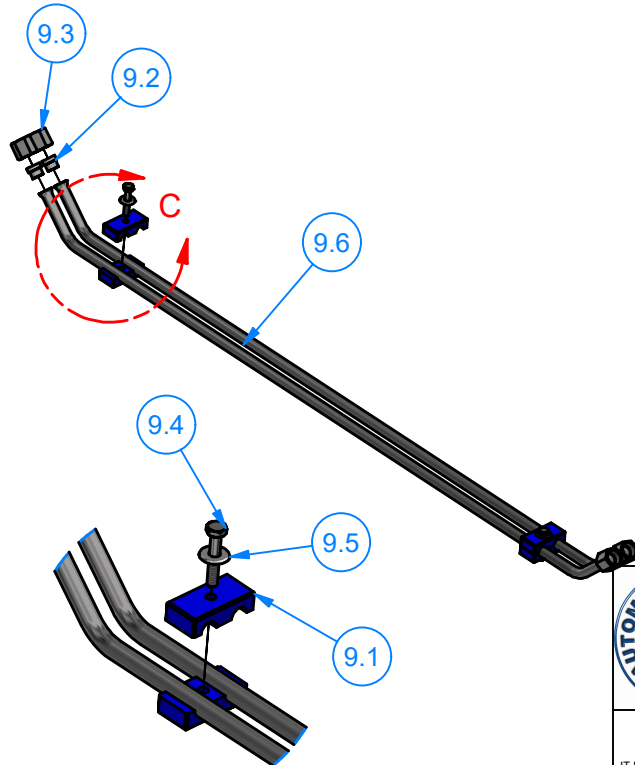
Parts List

ITEM	PART NUMBER	QTY	DESCRIPTION
3.1	TBCH001	1	Sq. Tube x 4 1/2" x 4 1/2" x 24" LG.
3.2	PL105X0300X0300X0H	1	Sheet Metal #12Ga x 2 13/16" x 2 13/16"
3.3	PLSS18GX0450X0450X0H	1	Sheet Metal #18Ga. x 4 1/2" x 4 1/2"
3.4	SLN12	4	Sleeve Nut 1/2"-13
3.5	TR1EB	1	Sq. Tube #3/16" x 3" x 3" x 20" LG.



TR1105ABA

Hydraulic Tube Assembly-30" LG



DETAIL C

Parts List			
ITEM	PART NUMBER	QTY	DESCRIPTION
9.1	DMP12A	4	UHMW Hydraulic Line Bracket 1/2"x 1"x 2"LG
9.2	SLVSTL050JIC	4	Sleeve 1/2" - 37 Deg Flared
9.3	NUTSTL075JIC	4	3/4"-10 37° Flare Nut - Steel
9.4	HHCS1420150	2	1/4"-20 x 1 1/2" Hex Screw
9.5	FW14	2	1/4" Flat Washer
9.6	ROTSS20GX050X03000	2	30" Hydraulic Tube



AVW EQUIPMENT CO., INC.
105 S. 9TH AVENUE
MAYWOOD, IL 60153
Tel: 708-343-7738 Fax: 708-343-9065
WWW.AVWEQUIPMENT.COM

- COMPANY PROPRIETARY NOTE -
THIS DRAWING AND ITS DESIGNS ARE PROPERTY OF AVW EQUIPMENT CO. &
IT IS NOT TO BE USED OR REPRODUCED WITHOUT THE PERMISSION FROM AVW CO.

DRAWN BY

Jibin

CUSTOMER: AVW EQUIPMENT CO.

CHECKED BY

PROJECT: TR4- Dual Arm Top Brush Hydraulic

QTY

DESCRIPTION: Hydraulic Tube Assembly-30" LG

RELEASE DATE

7/19/2022

PART NUMBER: TR1105ABA

REV# 02

DIMENSION ARE IN INCHES & PROVIDED PRIOR TO SURFACE TREATMENTS, UNLESS NOTED.

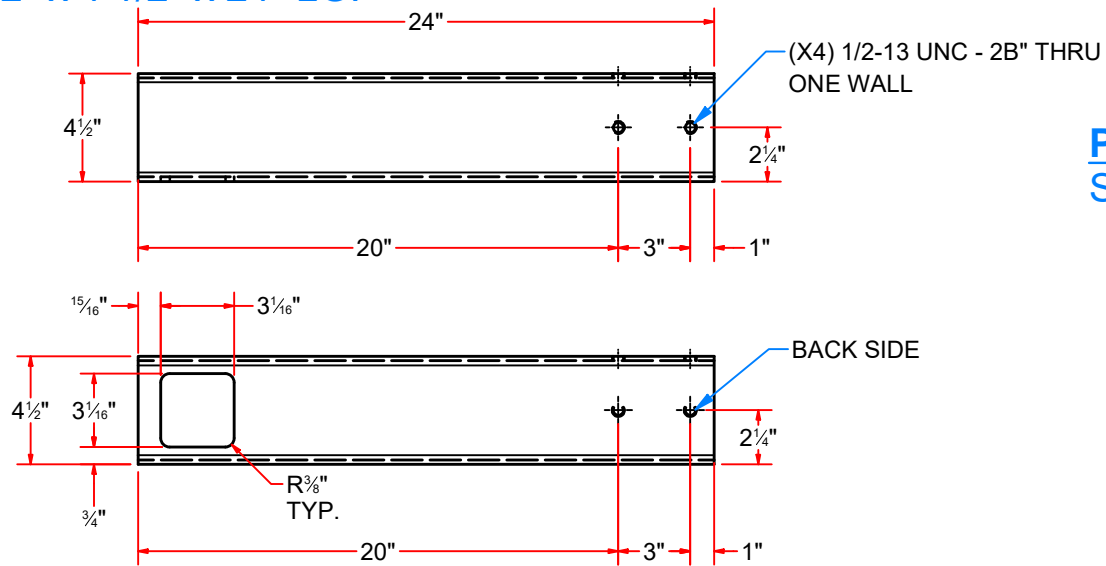
SIZE A

EST WEIGHT:

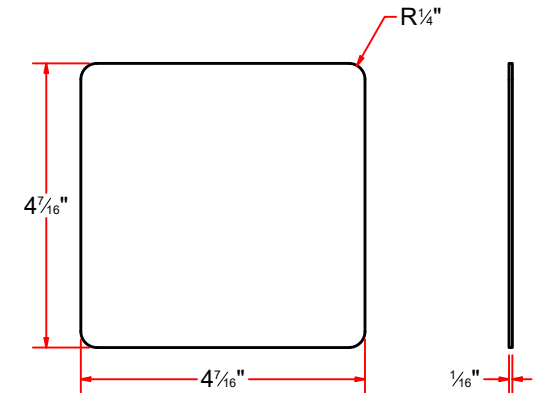
SHEET 15 of 43

PATH:L:\Libraries\Productivity\Top Brush\Top Brush Arm Assy\Parts\TR1105ABA Hydraulic Tube Assembly.iam

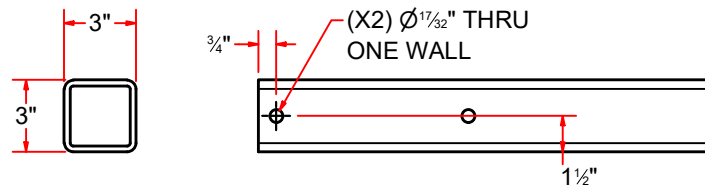
Sq. Tube x 4 1/2" x 4 1/2" x 24" LG.




PLSS18GX0450X0450X0H
Sheet Metal #18Ga. x 4 1/2" x 4 1/2"



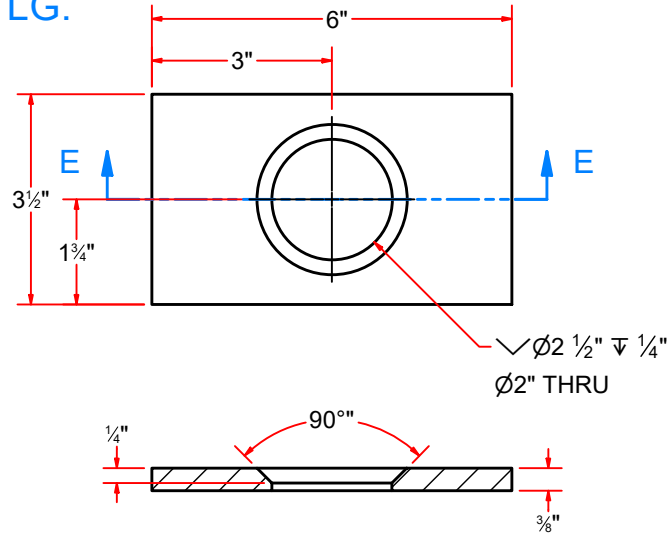
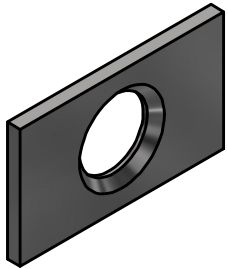
Sq. Tube #3/16" x 3" x 3" x 20" LG.



 AVW EQUIPMENT CO., INC. 105 S. 9TH AVENUE MAYWOOD, IL 60153 Tel: 708-343-7738 Fax: 708-343-9065 WWW.AVWEQUIPMENT.COM	DRAWN BY	Jibin	CUSTOMER: AVW EQUIPMENT CO.		
	CHECKED BY		PROJECT: TR4- Dual Arm Top Brush Hydraulic		
	QTY		DESCRIPTION: Sq. Tube x 4 1/2" x 4 1/2" x 24" LG.		
- COMPANY PROPRIETARY NOTE - THIS DRAWING AND ITS DESIGNS ARE PROPERTY OF AVW EQUIPMENT CO. & IT IS NOT TO BE USED OR REPRODUCED WITHOUT THE PERMISSION FROM AVW CO.	RELEASE DATE	7/19/2022	PART NUMBER: TR1EA		REV# 02
	DIMENSION ARE IN INCHES & PROVIDED PRIOR TO SURFACE TREATMENTS, UNLESS NOTED.		SIZE A	EST WEIGHT:	SHEET 16 of 43
PATH: L:\Libraries\Productivity\Top Brush\Top Brush Arm Assy\Parts\TBCH0011.ipt					

TR1CAA0304

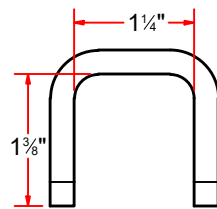
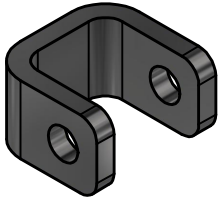
Plate #3/8" x 3 1/2" x 6" LG.



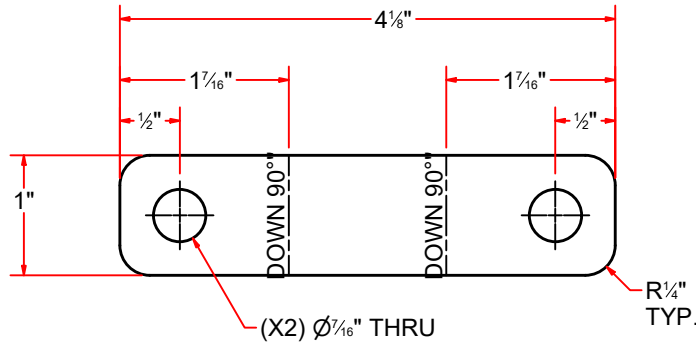
SECTION E-E

SAB4

Shock Absorber Bracket #3G x 1" x 4 1/8 LG.



FORMED



FLAT PATTERN



AVW EQUIPMENT CO., INC.
105 S. 9TH AVENUE
MAYWOOD, IL 60153
Tel: 708-343-7738 Fax: 708-343-9065
WWW.AVWEQUIPMENT.COM

- COMPANY PROPRIETARY NOTE -

THIS DRAWING AND ITS DESIGNS ARE PROPERTY OF AVW EQUIPMENT CO. & IT IS NOT TO BE USED OR REPRODUCED WITHOUT THE PERMISSION FROM AVW CO.

PATH:L:\Libraries\AVW Components\Plates\Top Brush Plates\TBA002.ipt

DRAWN BY

Jibin

CUSTOMER: AVW EQUIPMENT CO.

CHECKED BY

PROJECT: TR4- Dual Arm Top Brush Hydraulic

QTY

DESCRIPTION: Plate #3/8" x 3 1/2" x 6" LG.

RELEASE DATE

7/19/2022

PART NUMBER: TR1CAA0304

REV# 02

DIMENSION ARE IN INCHES & PROVIDED PRIOR TO SURFACE TREATMENTS, UNLESS NOTED.

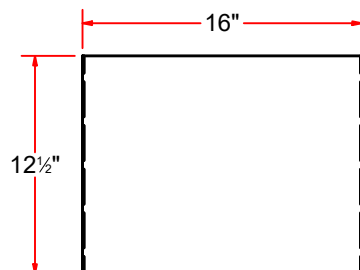
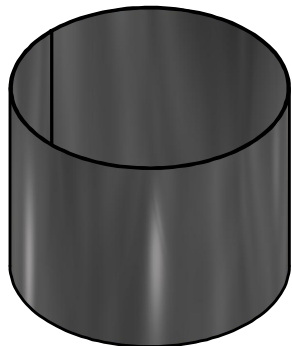
SIZE
A

EST WEIGHT:

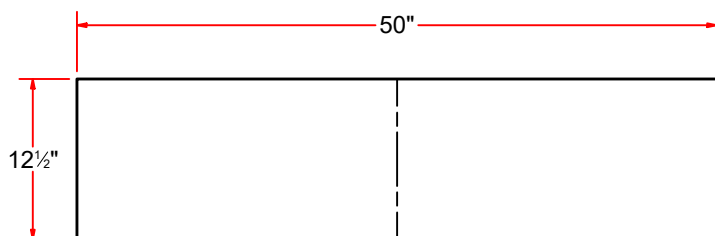
SHEET 17 of 43

TR1FHA

SS Sheet Metal #14Ga x 12.5 x 50 LG.



FORMED

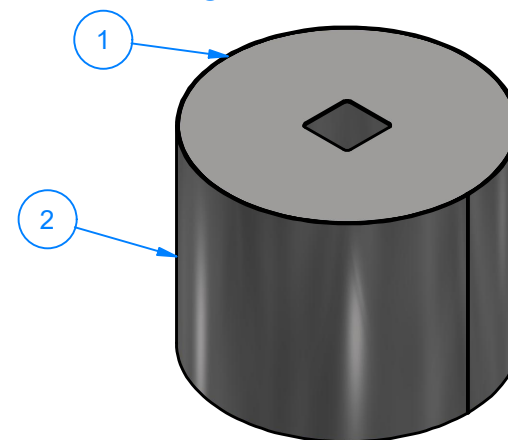


FLAT PATTERN

Parts List			
ITEM	PART NUMBER	QTY	DESCRIPTION
1	TR1FHB	1	ShtMetal#12Ga15 13/16"x3 1/16"
2	TR1FHA	1	SS Sheet Metal #14Ga x 12.5 x 50 LG.

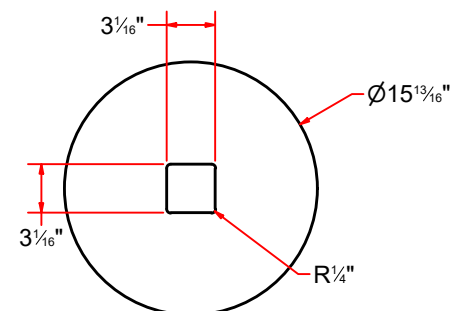
TR1FH

Top Brush Counterweight Cover



TR1FHB

ShtMetal#12Ga15 13/16"x3 1/16"



AVW EQUIPMENT CO., INC.
105 S. 9TH AVENUE
MAYWOOD, IL 60153
Tel: 708-343-7738 Fax: 708-343-9065
WWW.AVWEQUIPMENT.COM

- COMPANY PROPRIETARY NOTE -

THIS DRAWING AND ITS DESIGNS ARE PROPERTY OF AVW EQUIPMENT CO. & IT IS NOT TO BE USED OR REPRODUCED WITHOUT THE PERMISSION FROM AVW CO.

DRAWN BY

Jibin

CUSTOMER: AVW EQUIPMENT CO.

CHECKED BY

PROJECT: TR4- Dual Arm Top Brush Hydraulic

QTY

DESCRIPTION: SS Sheet Metal #14Ga x 12.5 x 50 LG.

RELEASE DATE

7/19/2022

PART NUMBER: TR1FHA

REV# 02

DIMENSION ARE IN INCHES & PROVIDED PRIOR TO SURFACE TREATMENTS, UNLESS NOTED.

SIZE
A

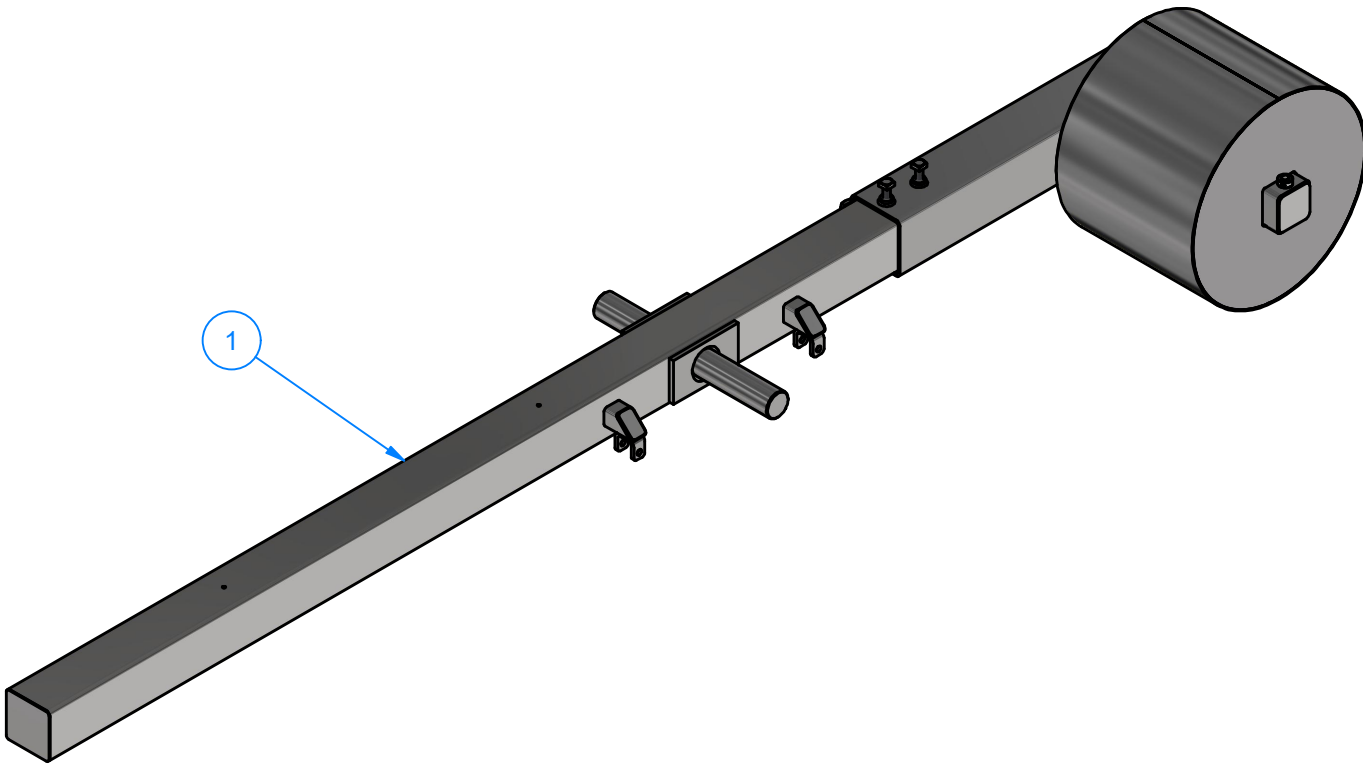
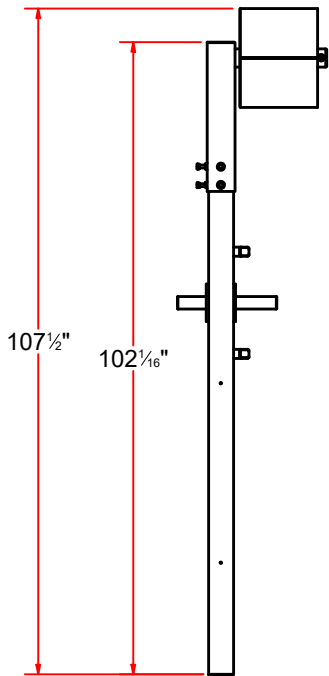
EST WEIGHT:

SHEET 18 of 43

PATH:L:\Libraries\AVW Components\Counterweight\Counter Weight Cover\Parts\Cover.ipt

TR3C0304
Top Brush Arm [P]108 LG.

Parts List			
ITEM	PART NUMBER	QTY	DESCRIPTION
1	TR3CA0304	1	Top Brush Arm 108" LG. - LFT.
3	TR1F0304-50	8	Counterweight 50 lb
4	TR1FH	1	Top Brush Counterweight Cover
5	TR1D	1	Custom Mounting Bracket for Counterweights
6	TR1FHB	1	ShtMetal#12Ga15 13/16"x3 1/16"
7	SSC12	1	1/2" Set Screw Collar
8	P1235	1	Pin 1_2 x 3-1_2 (no hole)
9	SQHS1213150	4	Square Bolt 1/2-13x1.5



AVW EQUIPMENT CO., INC.
105 S. 9TH AVENUE
MAYWOOD, IL 60153
Tel: 708-343-7738 Fax: 708-343-9065
WWW.AVWEQUIPMENT.COM

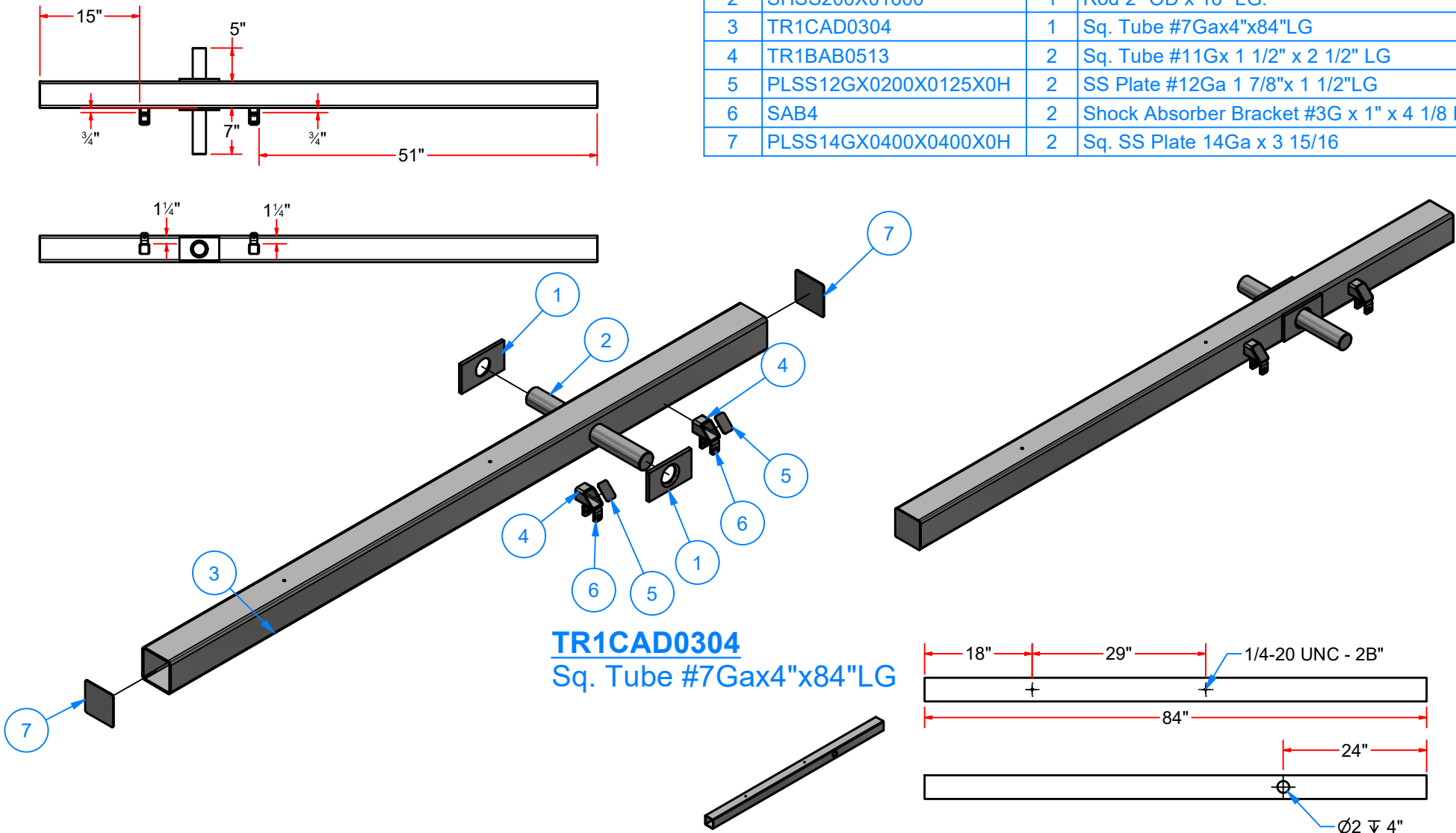
- COMPANY PROPRIETARY NOTE -
THIS DRAWING AND ITS DESIGNS ARE PROPERTY OF AVW EQUIPMENT CO. &
IT IS NOT TO BE USED OR REPRODUCED WITHOUT THE PERMISSION FROM AVW CO.

DRAWN BY	Jibin	CUSTOMER: AVW EQUIPMENT CO.	
CHECKED BY		PROJECT: TR4- Dual Arm Top Brush Hydraulic	
QTY		DESCRIPTION: Top Brush Arm [P]108 LG.	
RELEASE DATE	7/19/2022	PART NUMBER: TR3C0304	REV# 02
DIMENSION ARE IN INCHES & PROVIDED PRIOR TO SURFACE TREATMENTS, UNLESS NOTED.		SIZE A	EST WEIGHT: SHEET 19 of 43

PATH:L:\Libraries\Productivity\Top Brush\Top Brush Arm Assy\TR3C0304.iam

TR3CA0304
Top Brush Arm 108" LG. - LFT.

Parts List			
ITEM	PART NUMBER	QTY	DESCRIPTION
1	TR1CAA0304	2	Plate #3/8" x 3 1/2" x 6" LG.
2	SHSS200X01600	1	Rod 2" OD x 16" LG.
3	TR1CAD0304	1	Sq. Tube #7Gax4"x84"LG
4	TR1BAB0513	2	Sq. Tube #11Gx 1 1/2" x 2 1/2" LG
5	PLSS12GX0200X0125X0H	2	SS Plate #12Ga 1 7/8"x 1 1/2"LG
6	SAB4	2	Shock Absorber Bracket #3G x 1" x 4 1/8 LG.
7	PLSS14GX0400X0400X0H	2	Sq. SS Plate 14Ga x 3 15/16



TR1CAD0304
Sq. Tube #7Gax4"x84"LG



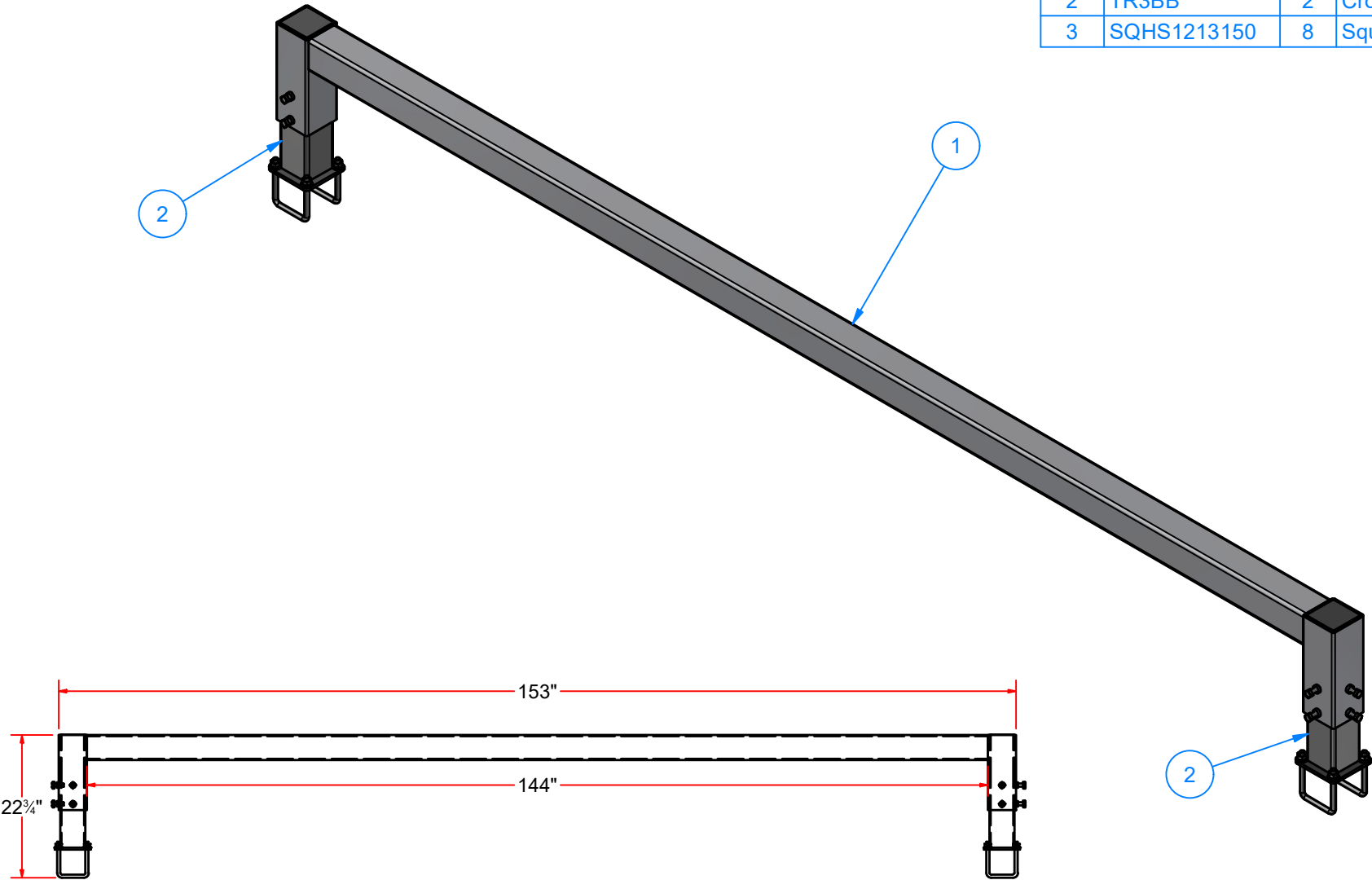
AVW EQUIPMENT CO., INC.
105 S. 9TH AVENUE
MAYWOOD, IL 60153
Tel: 708-343-7738 Fax: 708-343-9065
WWW.AVWEQUIPMENT.COM

- COMPANY PROPRIETARY NOTE -
THIS DRAWING AND ITS DESIGNS ARE PROPERTY OF AVW EQUIPMENT CO. &
IT IS NOT TO BE USED OR REPRODUCED WITHOUT THE PERMISSION FROM AVW CO.

DRAWN BY	Jibin	CUSTOMER: AVW EQUIPMENT CO.	
CHECKED BY		PROJECT: TR4- Dual Arm Top Brush Hydraulic	
QTY		DESCRIPTION: Top Brush Arm 108" LG. - LFT.	
RELEASE DATE	7/19/2022	PART NUMBER: TR3CA0304	REV# 02
DIMENSION ARE IN INCHES & PROVIDED PRIOR TO SURFACE TREATMENTS, UNLESS NOTED.		SIZE A	EST WEIGHT: SHEET 20 of 43

TR3B
Dual Arm Top Brush Crossbar

Parts List			
ITEM	PART NUMBER	QTY	DESCRIPTION
1	TR3BA	1	Dual Arm Top Brush Crossbar
2	TR3BB	2	Crossbar leg assembly
3	SQHS1213150	8	Square Bolt 1/2-13x1.5



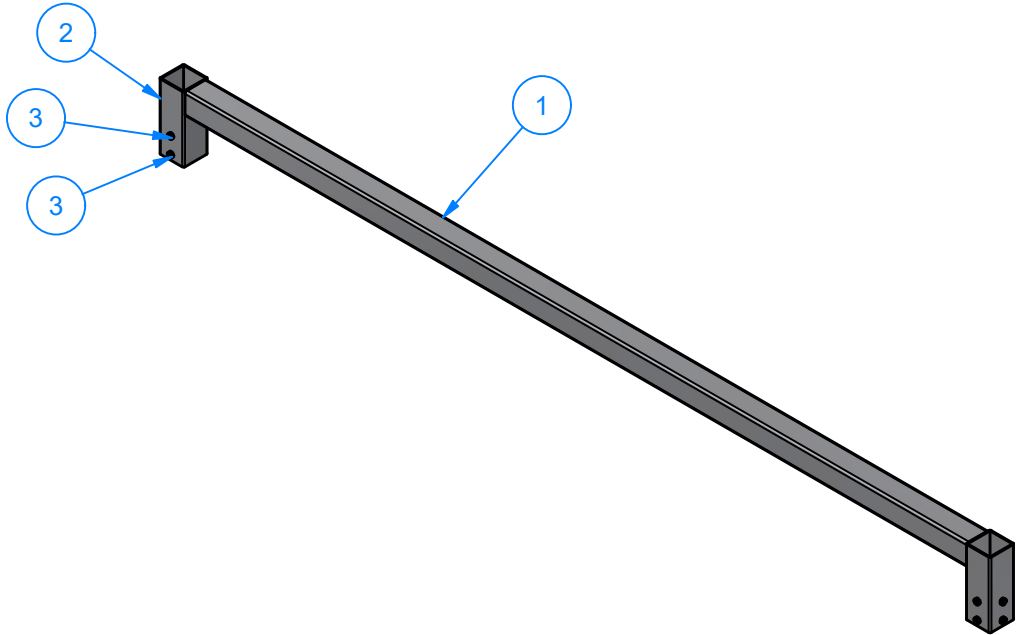
AVW EQUIPMENT CO., INC.
105 S. 9TH AVENUE
MAYWOOD, IL 60153
Tel: 708-343-7738 Fax: 708-343-9065
WWW.AVWEQUIPMENT.COM

- COMPANY PROPRIETARY NOTE -
THIS DRAWING AND ITS DESIGNS ARE PROPERTY OF AVW EQUIPMENT CO. &
IT IS NOT TO BE USED OR REPRODUCED WITHOUT THE PERMISSION FROM AVW CO.

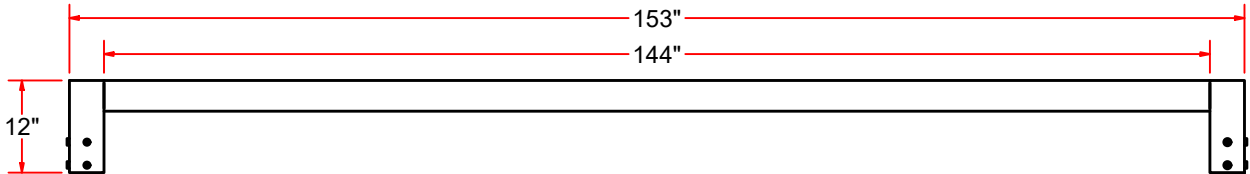
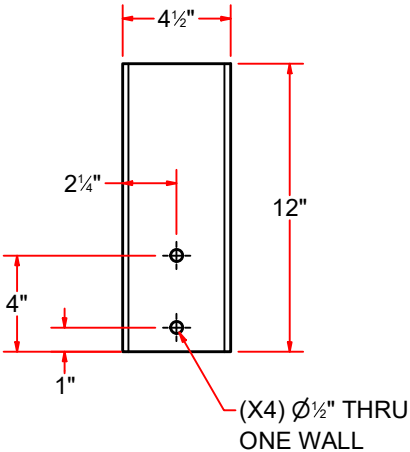
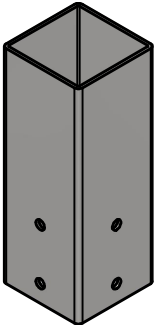
DRAWN BY	Jibin	CUSTOMER: AVW EQUIPMENT CO.	
CHECKED BY		PROJECT: TR4- Dual Arm Top Brush Hydraulic	
QTY		DESCRIPTION: Dual Arm Top Brush Crossbar	
RELEASE DATE	7/19/2022	PART NUMBER: TR3B	REV# 02
DIMENSION ARE IN INCHES & PROVIDED PRIOR TO SURFACE TREATMENTS, UNLESS NOTED.		SIZE A	EST WEIGHT: SHEET 21 of 43

TR3BA
Dual Arm Top Brush Crossbar

Parts List			
ITEM	PART NUMBER	QTY	DESCRIPTION
1	SQTSS07GX400x14400	1	Sq. Tube #7Ga. 4" x 4" x 144" L.G.
2	AA0BAA	2	Sq.Tubing [7 Ga.] 4 1/2" x 12" LG
3	SLN12	8	Sleeve Nut 1/2"-13



AA0BAA
Sq.Tubing [7 Ga.] 4 1/2" x 12" LG

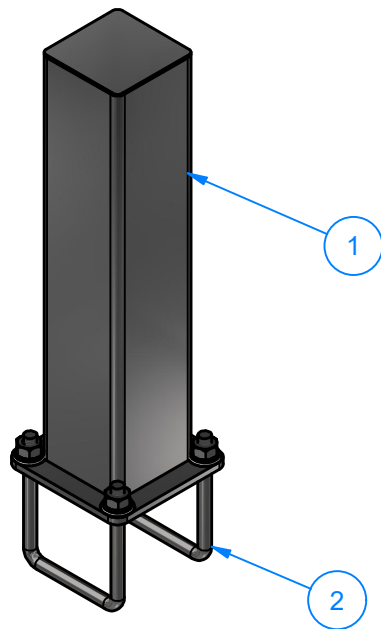


AVW EQUIPMENT CO., INC.
105 S. 9TH AVENUE
MAYWOOD, IL 60153
Tel: 708-343-7738 Fax: 708-343-9065
WWW.AVWEQUIPMENT.COM

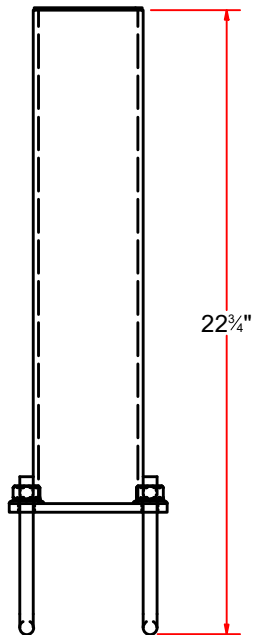
- COMPANY PROPRIETARY NOTE -
THIS DRAWING AND ITS DESIGNS ARE PROPERTY OF AVW EQUIPMENT CO. &
IT IS NOT TO BE USED OR REPRODUCED WITHOUT THE PERMISSION FROM AVW CO.

DRAWN BY	Jibin	CUSTOMER: AVW EQUIPMENT CO.	
CHECKED BY		PROJECT: TR4- Dual Arm Top Brush Hydraulic	
QTY		DESCRIPTION: Dual Arm Top Brush Crossbar	
RELEASE DATE	7/19/2022	PART NUMBER: TR3BA	REV# 02
DIMENSION ARE IN INCHES & PROVIDED PRIOR TO SURFACE TREATMENTS, UNLESS NOTED.		SIZE A	SHEET 22 of 43

TR3BB
Crossbar leg assembly



Parts List			
ITEM	PART NUMBER	QTY	DESCRIPTION
1	TR3BBA	1	Crossbar leg Weldment
2	UB- SQ050X400X625X1700	2	Square U Bolt D 1/2" x 4" x 6 1/4" LG
3	FW12	4	1/2" Flat Washer
4	SLW12	4	1/2" Split Lock Washer
5	HN1213	4	1/2-13 Heavy Hex Nut



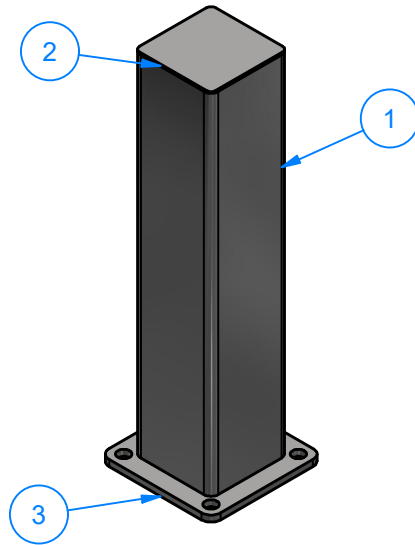
AVW EQUIPMENT CO., INC.
105 S. 9TH AVENUE
MAYWOOD, IL 60153
Tel: 708-343-7738 Fax: 708-343-9065
WWW.AVWEQUIPMENT.COM

- COMPANY PROPRIETARY NOTE -
THIS DRAWING AND ITS DESIGNS ARE PROPERTY OF AVW EQUIPMENT CO. &
IT IS NOT TO BE USED OR REPRODUCED WITHOUT THE PERMISSION FROM AVW CO.

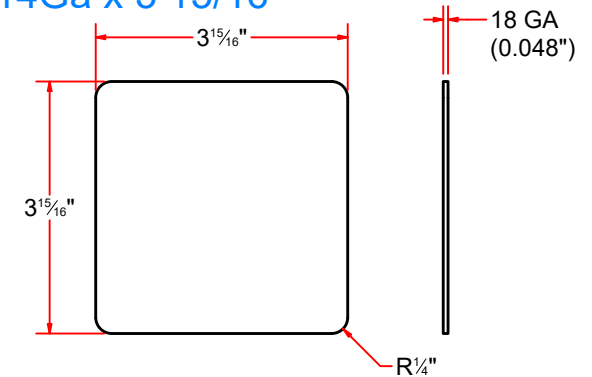
DRAWN BY	Jibin	CUSTOMER: AVW EQUIPMENT CO.	
CHECKED BY		PROJECT: TR4- Dual Arm Top Brush Hydraulic	
QTY		DESCRIPTION: Crossbar leg assembly	
RELEASE DATE	7/19/2022	PART NUMBER: TR3BB	REV# 02
DIMENSION ARE IN INCHES & PROVIDED PRIOR TO SURFACE TREATMENTS, UNLESS NOTED.		SIZE A	EST WEIGHT: SHEET 23 of 43

TR3BBA

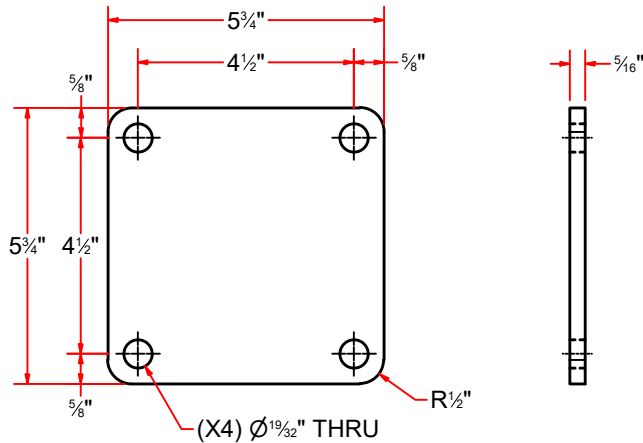
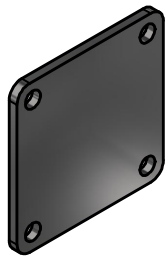
Crossbar leg Weldment



PLSS14GX0400X0400X0H Sq. SS Plate 14Ga x 3 15/16



PLSS313X0575X0575X4H Plate #5/16" x 5 3/4" x 5 3/4"



Parts List			
ITEM	PART NUMBER	QTY	DESCRIPTION
1	SQTSS07GX400x01800	1	Sq. Tube #7Ga. 4" x 4" x 18" L.G.
2	PLSS14GX0400X0400X0H	1	Sq. SS Plate 14Ga x 3 15/16
3	PLSS313X0575X0575X4H	1	Plate #5/16" x 5 3/4" x 5 3/4"



AVW EQUIPMENT CO., INC.
105 S. 9TH AVENUE
MAYWOOD, IL 60153
Tel: 708-343-7738 Fax: 708-343-9065
WWW.AVWEQUIPMENT.COM

- COMPANY PROPRIETARY NOTE -

THIS DRAWING AND ITS DESIGNS ARE PROPERTY OF AVW EQUIPMENT CO. & IT IS NOT TO BE USED OR REPRODUCED WITHOUT THE PERMISSION FROM AVW CO.

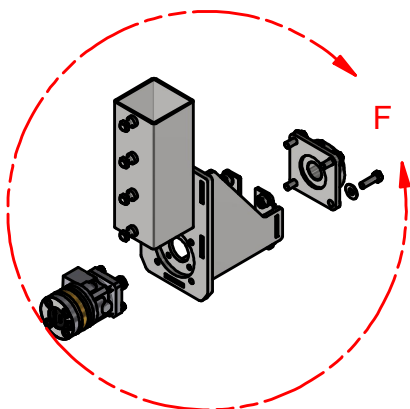
DRAWN BY	Jibin	CUSTOMER: AVW EQUIPMENT CO.	
CHECKED BY		PROJECT: TR4- Dual Arm Top Brush Hydraulic	
QTY		DESCRIPTION: Crossbar leg Weldment	
RELEASE DATE	7/19/2022	PART NUMBER: TR3BBA	REV# 02
DIMENSION ARE IN INCHES & PROVIDED PRIOR TO SURFACE TREATMENTS, UNLESS NOTED.		SIZE A	EST WEIGHT:
			SHEET 24 of 43

PATH:L:\Libraries\Productivity\Top Brush\Top Brush Crossbar Assy\Parts\Crossbar leg Weldment.iam

Shaft Assembly With Parts

DESCRIPTION
Split Taper Bushing
Connecting Disc
Ø 1.5" x 140" LG
Sh Inline Universal Motor Mount
ange Mount Bearing-SS w/ plated Insert
Motor
Washer
t Lock Washer
heavy Hex Nut
x 1 1/2" UNC Hex Screw
1 1/4" UNC Hex Screw
Bolt - 1/2"-13 UNC x 1"

DETAIL F



DETAIL F



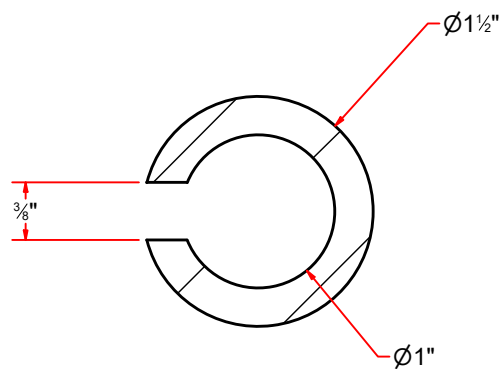
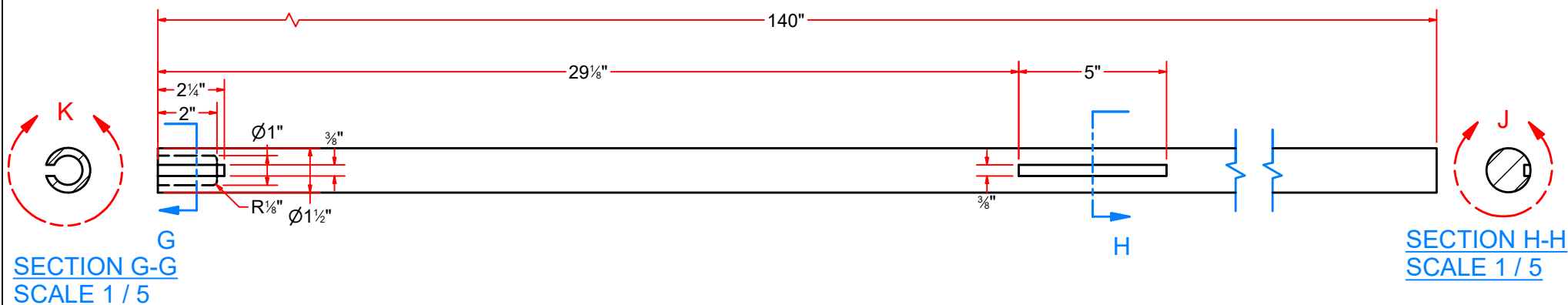
- COMPANY PROPRIETARY NOTE -
THIS DRAWING AND ITS DESIGNS ARE PROPERTY OF AVW EQUIPMENT CO. &
IT IS NOT TO BE USED OR REPRODUCED WITHOUT THE PERMISSION FROM AVW CO.

SHEET 25 of 43

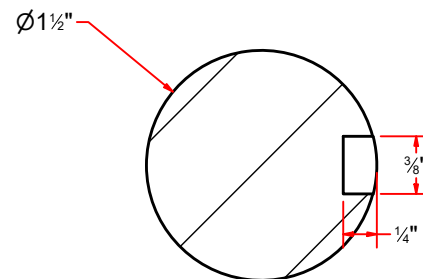
PATH:L:\Designs\Product Lines\TB - Top Brush\TR4 - Dual Arm Top Brush\Parts\TR4 - Driver Shaft Assembly With Parts.iam

TR4GB

Shaft OD 1.5" x 140" LG



DETAIL K



DETAIL J



AVW EQUIPMENT CO., INC.
105 S. 9TH AVENUE
MAYWOOD, IL 60153
Tel: 708-343-7738 Fax: 708-343-9065
WWW.AVWEQUIPMENT.COM

- COMPANY PROPRIETARY NOTE -

THIS DRAWING AND ITS DESIGNS ARE PROPERTY OF AVW EQUIPMENT CO. &
IT IS NOT TO BE USED OR REPRODUCED WITHOUT THE PERMISSION FROM AVW CO.

DRAWN BY

Jibin

CUSTOMER: AVW EQUIPMENT CO.

CHECKED BY

PROJECT: TR4- Dual Arm Top Brush Hydraulic

QTY

DESCRIPTION: Shaft OD 1.5" x 140" LG

RELEASE
DATE

7/19/2022

PART NUMBER: TR4GB

REV# 02

DIMENSION ARE IN INCHES & PROVIDED PRIOR
TO SURFACE TREATMENTS, UNLESS NOTED.

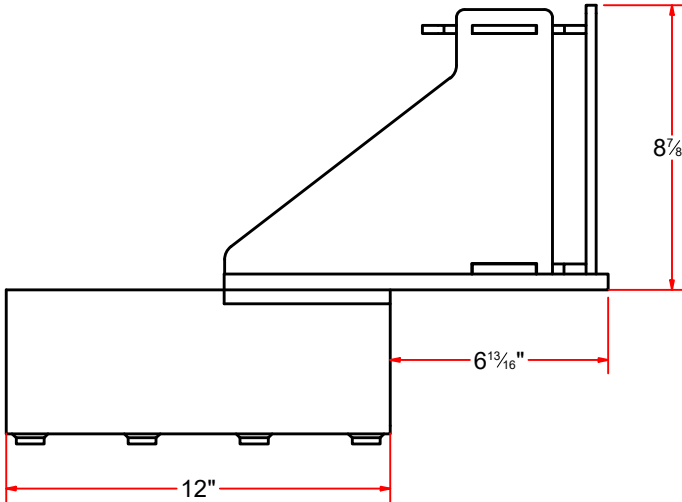
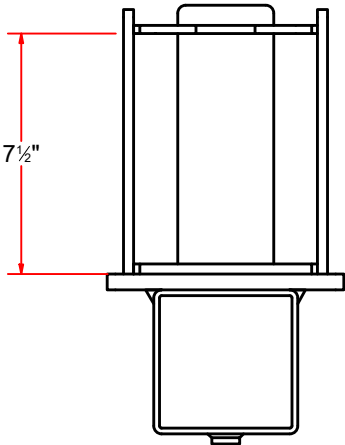
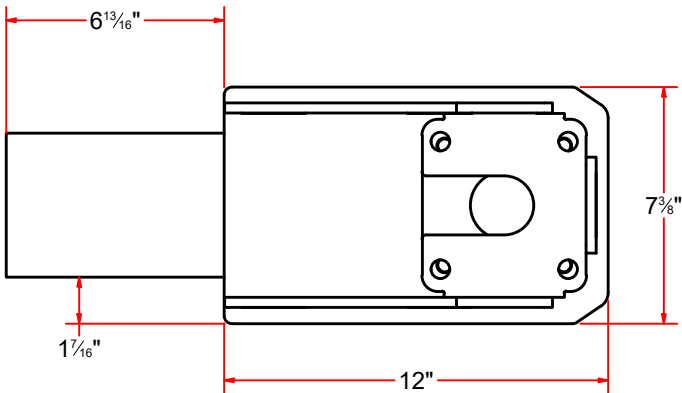
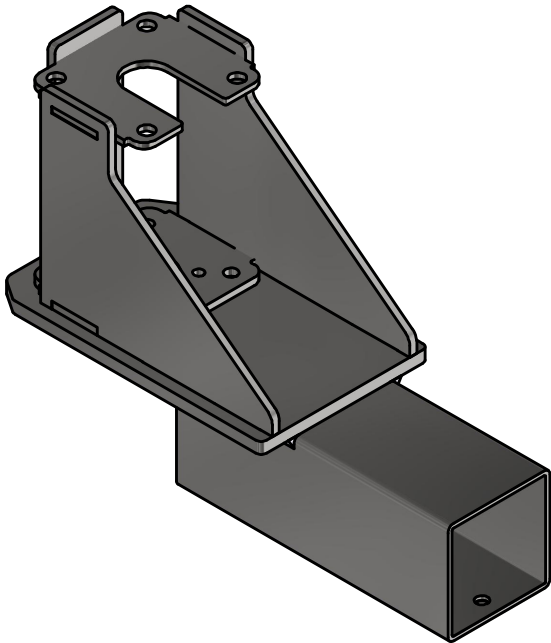
SIZE
A

EST WEIGHT:

SHEET 26 of 43

PATH:L:\Designs\Product Lines\TB - Top Brush\TR4 - Dual Arm Top Brush\Parts\Shaft - 140 in.ipt

TR4GA-IL
Motor Mount Dual arm top brush



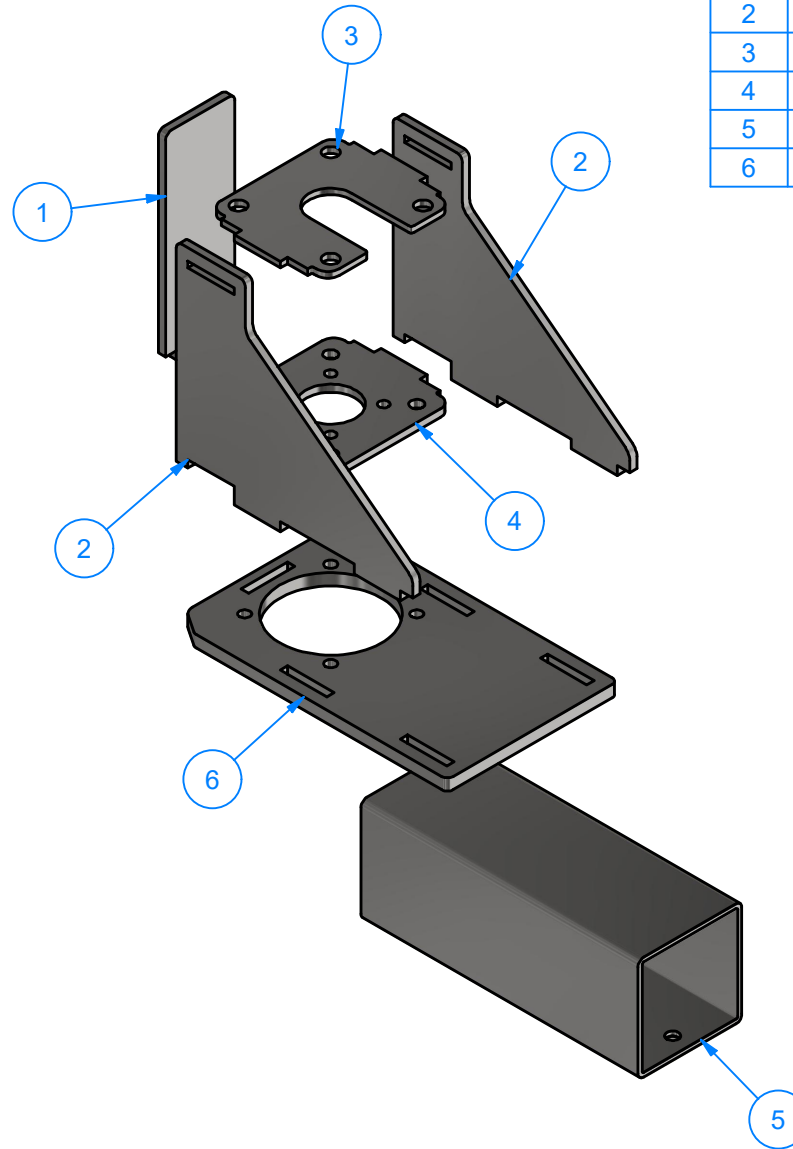
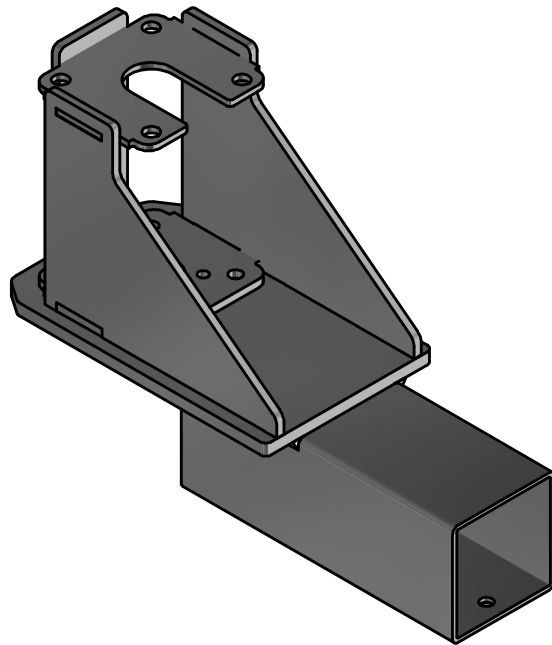
AVW EQUIPMENT CO., INC.
105 S. 9TH AVENUE
MAYWOOD, IL 60153
Tel: 708-343-7738 Fax: 708-343-9065
WWW.AVWEQUIPMENT.COM

- COMPANY PROPRIETARY NOTE -
THIS DRAWING AND ITS DESIGNS ARE PROPERTY OF AVW EQUIPMENT CO. &
IT IS NOT TO BE USED OR REPRODUCED WITHOUT THE PERMISSION FROM AVW CO.

DRAWN BY	Jibin	CUSTOMER: AVW EQUIPMENT CO.	
CHECKED BY		PROJECT: TR4- Dual Arm Top Brush Hydraulic	
QTY		DESCRIPTION: Dual Arm Top Brush Hydraulic	
RELEASE DATE	7/19/2022	PART NUMBER: TR4- Dual Arm Top Brush Hydraulic	Rev1 REV# 02
DIMENSION ARE IN INCHES & PROVIDED PRIOR TO SURFACE TREATMENTS, UNLESS NOTED.		SIZE A	EST WEIGHT: SHEET 27 of 43

TR4GA-IL

Motor Mount Dual arm top brush



Parts List

ITEM	QTY	DESCRIPTION
1	1	Plate #5/16"x3"x8 7/8"LG.
2	2	Plate #5/16"x8 7/8"x10 1/4"LG.
3	1	Plate #1/4"x5 1/8"x6 3/8"LG.
4	1	Plate #5/16"x5 1/8"x6 3/8"LG.
5	1	Sleeve 4 1/2" SQ. x 12" LG.
6	1	Plate #1/2" Thick_ 7 3/8" X 12"LG



AVW EQUIPMENT CO., INC.
105 S. 9TH AVENUE
MAYWOOD, IL 60153
Tel: 708-343-7738 Fax: 708-343-9065
WWW.AVWEQUIPMENT.COM

DRAWN BY

Jibin

CUSTOMER: AVW EQUIPMENT CO.

CHECKED BY

PROJECT: TR4- Dual Arm Top Brush Hydraulic

QTY

DESCRIPTION: Dual Arm Top Brush Hydraulic

- COMPANY PROPRIETARY NOTE -

THIS DRAWING AND ITS DESIGNS ARE PROPERTY OF AVW EQUIPMENT CO. &
IT IS NOT TO BE USED OR REPRODUCED WITHOUT THE PERMISSION FROM AVW CO.

RELEASE
DATE

7/19/2022

PART NUMBER: TR4- Dual Arm Top Brush Hydraulic Rev1 REV# 02

DIMENSION ARE IN INCHES & PROVIDED PRIOR
TO SURFACE TREATMENTS, UNLESS NOTED.

SIZE
A

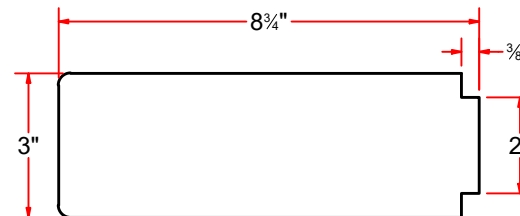
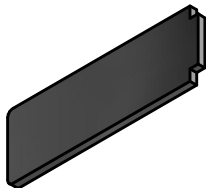
EST WEIGHT:

SHEET 28 of 43

PATH:L:\Designs\Product Lines\TB - Top Brush\TR4 - Dual Arm Top Brush\2D Drawing\TR4- Dual Arm Top Brush Hydraulic Rev1.dwg

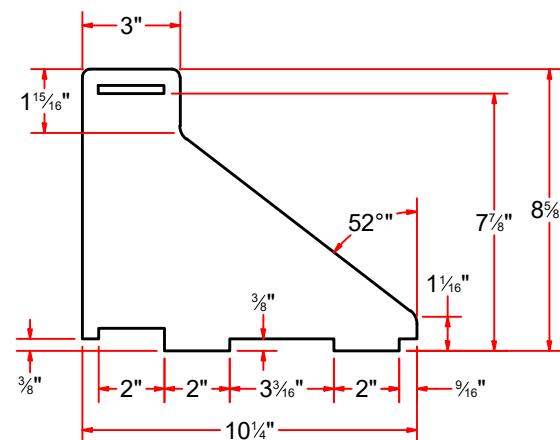
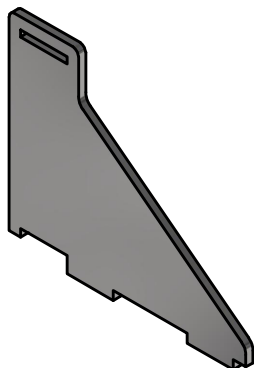
TR1GAC-U

Plate #5/16"x3"x8 7/8"LG.



TR1GAA-U

Plate #5/16"x8 7/8"x10 1/4"LG.



AVW EQUIPMENT CO., INC.
105 S. 9TH AVENUE
MAYWOOD, IL 60153
Tel: 708-343-7738 Fax: 708-343-9065
WWW.AVWEQUIPMENT.COM

- COMPANY PROPRIETARY NOTE -

THIS DRAWING AND ITS DESIGNS ARE PROPERTY OF AVW EQUIPMENT CO. &
IT IS NOT TO BE USED OR REPRODUCED WITHOUT THE PERMISSION FROM AVW CO.

DRAWN BY

Jibin

CUSTOMER: AVW EQUIPMENT CO.

CHECKED BY

PROJECT: TR4- Dual Arm Top Brush Hydraulic

QTY

DESCRIPTION: Dual Arm Top Brush Hydraulic

RELEASE
DATE

7/19/2022

PART NUMBER: TR4- Dual Arm Top Brush Hydraulic Rev1 REV# 02

DIMENSION ARE IN INCHES & PROVIDED PRIOR
TO SURFACE TREATMENTS, UNLESS NOTED.

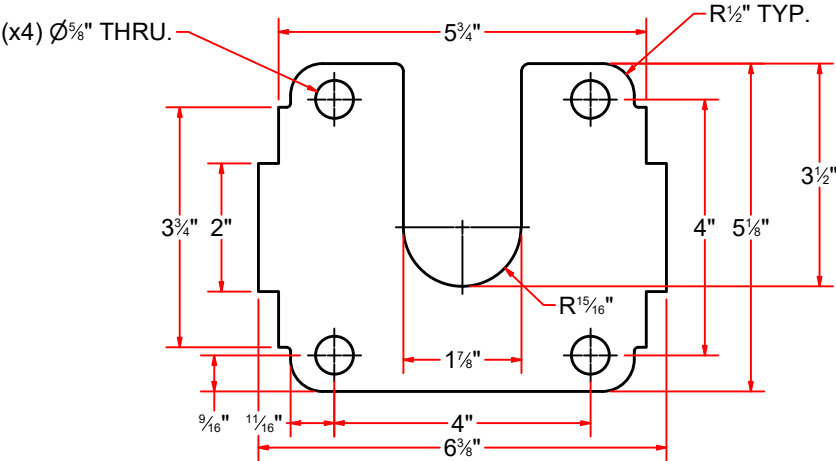
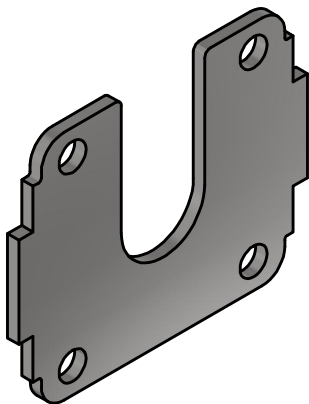
SIZE
A

EST WEIGHT:

SHEET 29 of 43

PATH:L:\Designs\Product Lines\TB - Top Brush\TR4 - Dual Arm Top Brush\2D Drawing\TR4- Dual Arm Top Brush Hydraulic Rev1.dwg

WA10KAC
Plate #1/4"x5 1/8"x6 3/8"LG.

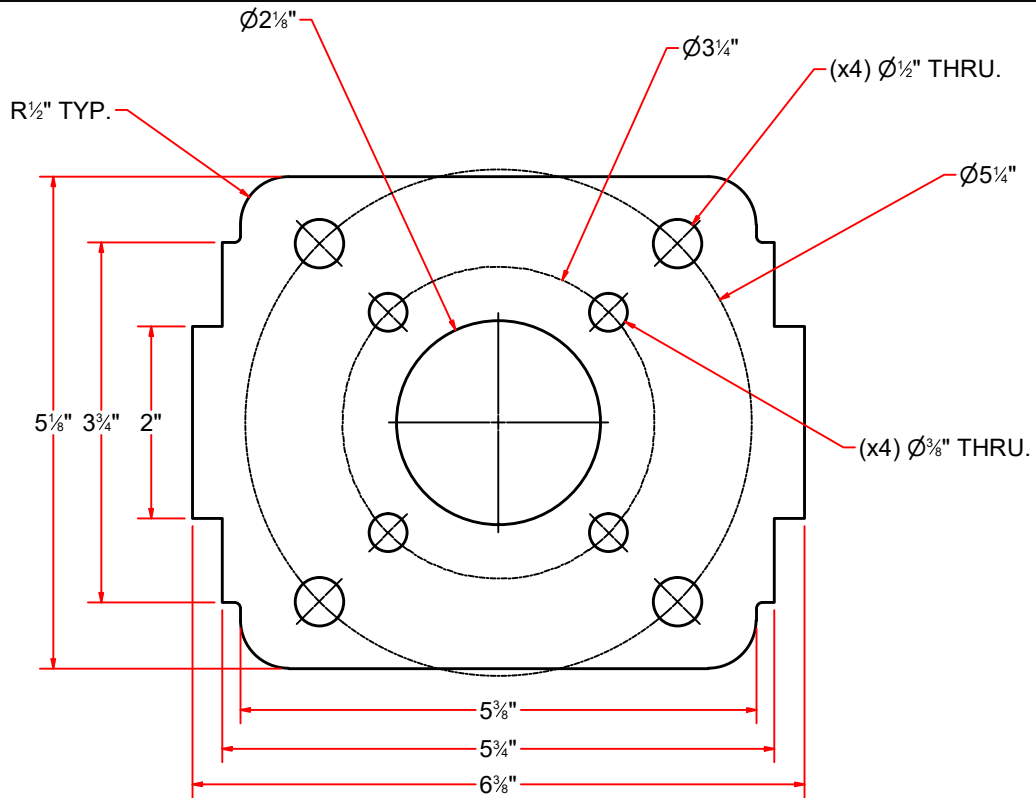
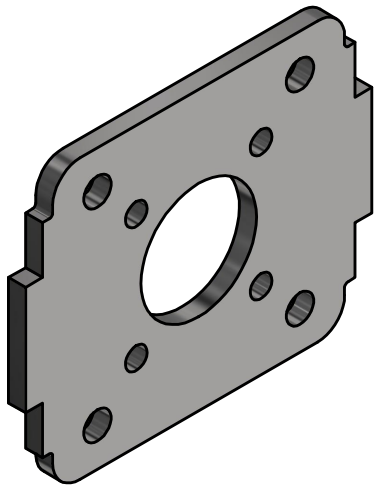


AVW EQUIPMENT CO., INC.
105 S. 9TH AVENUE
MAYWOOD, IL 60153
Tel: 708-343-7738 Fax: 708-343-9065
WWW.AVWEQUIPMENT.COM

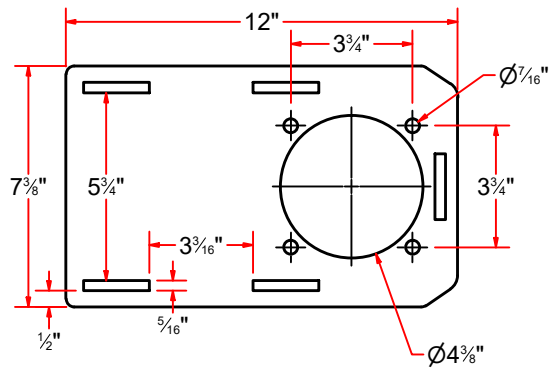
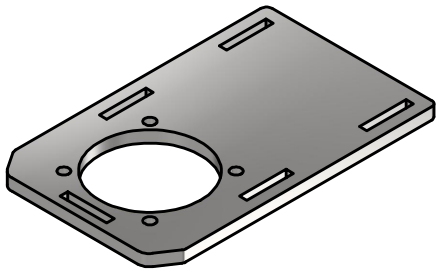
- COMPANY PROPRIETARY NOTE -
THIS DRAWING AND ITS DESIGNS ARE PROPERTY OF AVW EQUIPMENT CO. &
IT IS NOT TO BE USED OR REPRODUCED WITHOUT THE PERMISSION FROM AVW CO.


DRAWN BY	Jibin	CUSTOMER: AVW EQUIPMENT CO.	
CHECKED BY		PROJECT: TR4- Dual Arm Top Brush Hydraulic	
QTY		DESCRIPTION: Dual Arm Top Brush Hydraulic	
RELEASE DATE	7/19/2022	PART NUMBER: TR4- Dual Arm Top Brush Hydraulic	Rev1 REV# 02
DIMENSION ARE IN INCHES & PROVIDED PRIOR TO SURFACE TREATMENTS, UNLESS NOTED.		SIZE A	EST WEIGHT: SHEET 30 of 43

TR1GAD-U
Plate #5/16"x5 1/8"x6 3/8"LG.



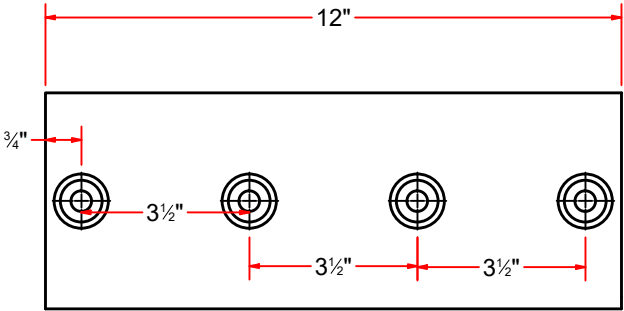
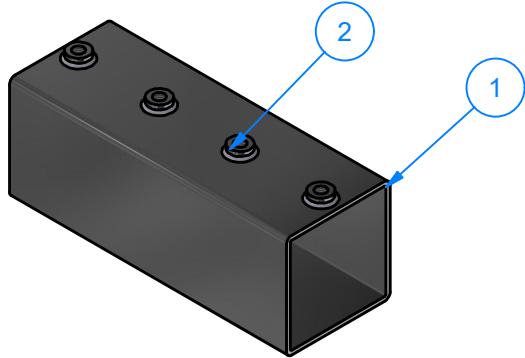
TR4GAA-IL
Plate #1/2" Thick_ 7 3/8" X 12"LG



	AVW EQUIPMENT CO., INC. 105 S. 9TH AVENUE MAYWOOD, IL 60153 Tel: 708-343-7738 Fax: 708-343-9065 WWW.AVWEQUIPMENT.COM		DRAWN BY	Jibin	CUSTOMER: AVW EQUIPMENT CO.		
			CHECKED BY		PROJECT: TR4- Dual Arm Top Brush Hydraulic		
			QTY		DESCRIPTION: Dual Arm Top Brush Hydraulic		
	- COMPANY PROPRIETARY NOTE - THIS DRAWING AND ITS DESIGNS ARE PROPERTY OF AVW EQUIPMENT CO. & IT IS NOT TO BE USED OR REPRODUCED WITHOUT THE PERMISSION FROM AVW CO.		RELEASE DATE	7/19/2022	PART NUMBER: TR4- Dual Arm Top Brush Hydraulic		Rev1 REV# 02
DIMENSION ARE IN INCHES & PROVIDED PRIOR TO SURFACE TREATMENTS, UNLESS NOTED.			SIZE A	EST WEIGHT:	SHEET 31 of 43		
PATH:L:\Designs\Product Lines\TB - Top Brush\TR4 - Dual Arm Top Brush\2D Drawing\TR4- Dual Arm Top Brush Hydraulic Rev1.dwg							

TR4GAB-IL
Sleeve 4 1/2" SQ. x 12" LG.

Parts List		
ITEM	QTY	DESCRIPTION
1	1	Sq.Tubing [7 Ga.] 4 1/2" x 12" LG
2	4	Sleeve Nut 1/2"-13

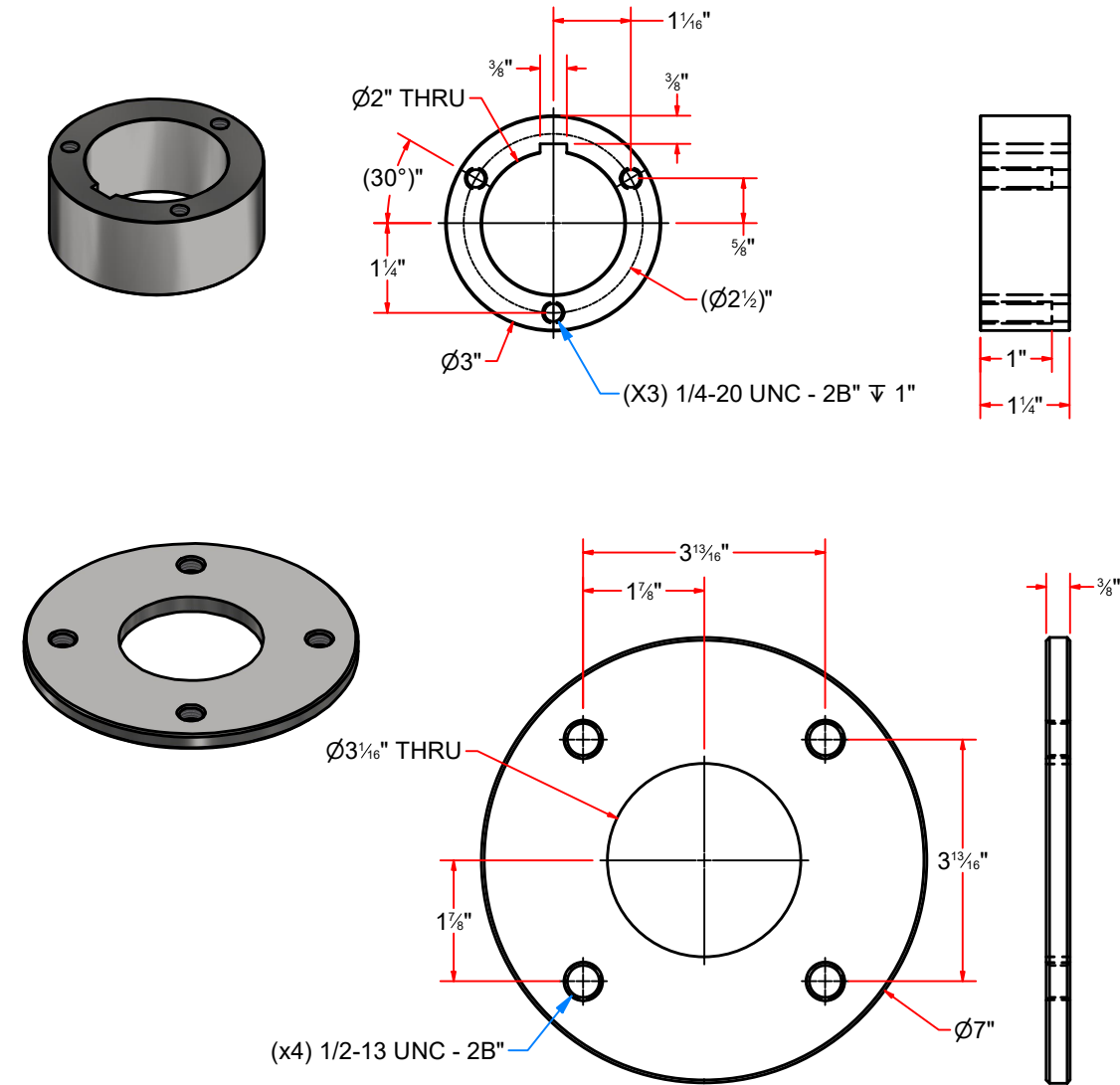


AVW EQUIPMENT CO., INC.
105 S. 9TH AVENUE
MAYWOOD, IL 60153
Tel: 708-343-7738 Fax: 708-343-9065
WWW.AVWEQUIPMENT.COM

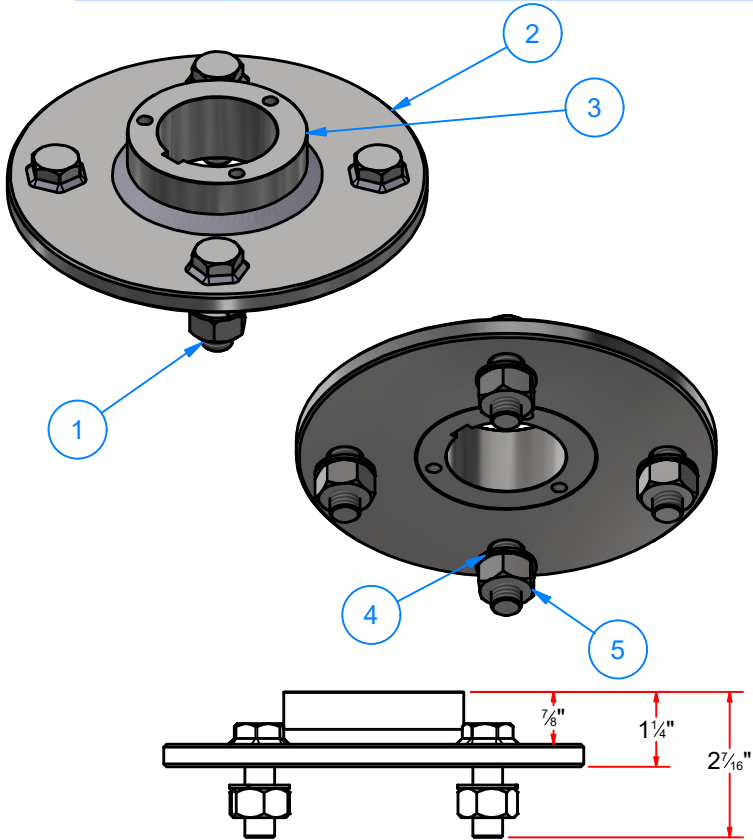
- COMPANY PROPRIETARY NOTE -
THIS DRAWING AND ITS DESIGNS ARE PROPERTY OF AVW EQUIPMENT CO. &
IT IS NOT TO BE USED OR REPRODUCED WITHOUT THE PERMISSION FROM AVW CO.

DRAWN BY	Jibin	CUSTOMER: AVW EQUIPMENT CO.	
CHECKED BY		PROJECT: TR4- Dual Arm Top Brush Hydraulic	
QTY		DESCRIPTION: Dual Arm Top Brush Hydraulic	
RELEASE DATE	7/19/2022	PART NUMBER: TR4- Dual Arm Top Brush Hydraulic	Rev1 REV# 02
DIMENSION ARE IN INCHES & PROVIDED PRIOR TO SURFACE TREATMENTS, UNLESS NOTED.		SIZE A	EST WEIGHT: SHEET 32 of 43

RB2AEB-P1-1-0106
Brush Connecting Disc



Parts List		
ITEM	QTY	DESCRIPTION
1	4	1/2"-13 x 1 1/2" L Hex Screw
2	1	Oscillating Plate #3/8" x 7" O.D.
3	1	Hub (Weld-On): Rocker Panel
4	4	1/2" Split Lock Washer
5	4	1/2-13 Heavy Hex Nut



AVW EQUIPMENT CO., INC.
105 S. 9TH AVENUE
MAYWOOD, IL 60153
Tel: 708-343-7738 Fax: 708-343-9065
WWW.AVWEQUIPMENT.COM

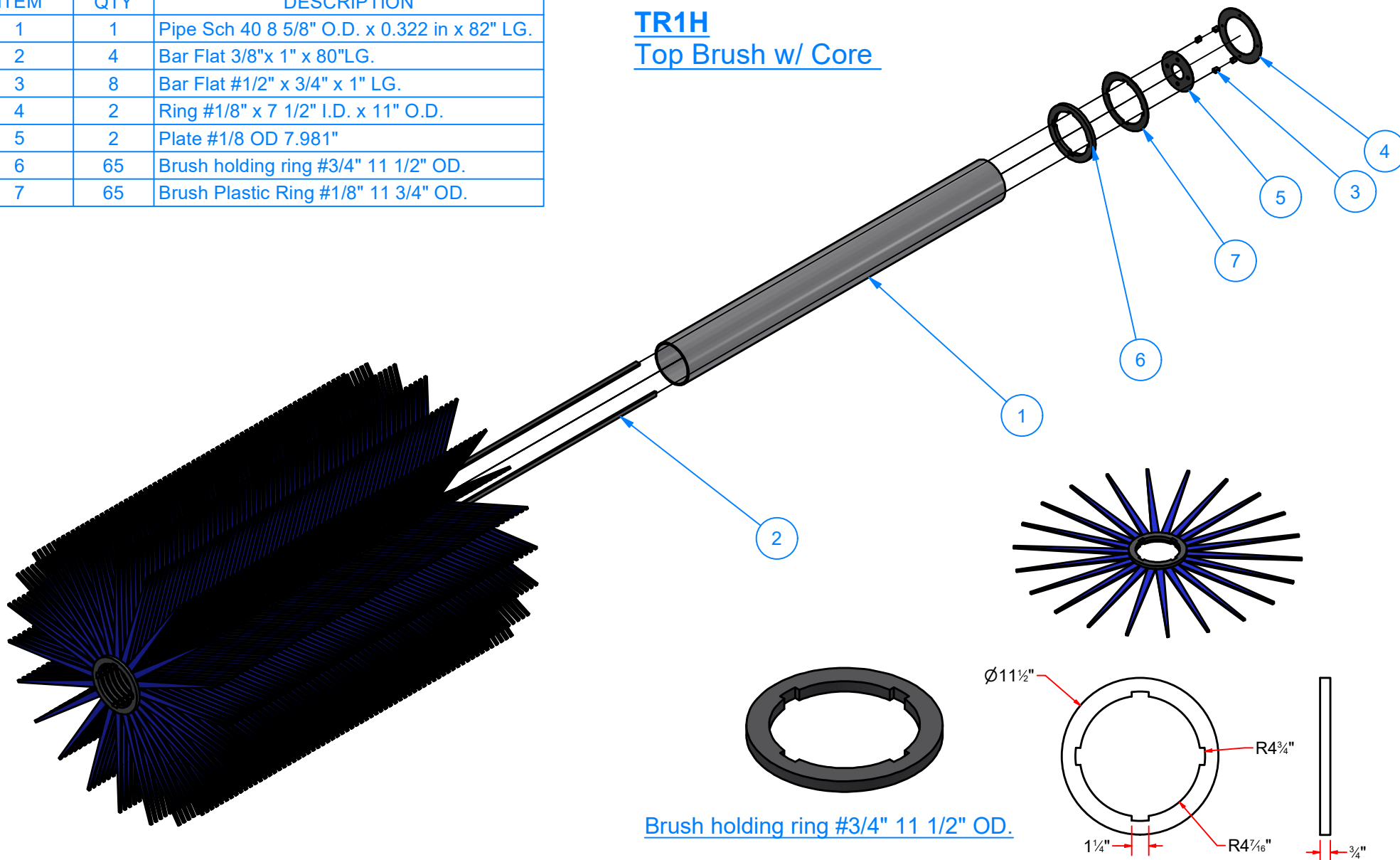
- COMPANY PROPRIETARY NOTE -
THIS DRAWING AND ITS DESIGNS ARE PROPERTY OF AVW EQUIPMENT CO. &
IT IS NOT TO BE USED OR REPRODUCED WITHOUT THE PERMISSION FROM AVW CO.

DRAWN BY	Jibin	CUSTOMER: AVW EQUIPMENT CO.	
CHECKED BY		PROJECT: TR4- Dual Arm Top Brush Hydraulic	
QTY		DESCRIPTION: Dual Arm Top Brush Hydraulic	
RELEASE DATE	7/19/2022	PART NUMBER: TR4- Dual Arm Top Brush Hydraulic	Rev1 REV# 02
DIMENSION ARE IN INCHES & PROVIDED PRIOR TO SURFACE TREATMENTS, UNLESS NOTED.		SIZE A	EST WEIGHT: SHEET 33 of 43

Parts List

ITEM	QTY	DESCRIPTION
1	1	Pipe Sch 40 8 5/8" O.D. x 0.322 in x 82" LG.
2	4	Bar Flat 3/8"x 1" x 80"LG.
3	8	Bar Flat #1/2" x 3/4" x 1" LG.
4	2	Ring #1/8" x 7 1/2" I.D. x 11" O.D.
5	2	Plate #1/8 OD 7.981"
6	65	Brush holding ring #3/4" 11 1/2" OD.
7	65	Brush Plastic Ring #1/8" 11 3/4" OD.

TR1H Top Brush w/ Core



Brush holding ring #3/4" 11 1/2" OD.



AVW EQUIPMENT CO., INC.
105 S. 9TH AVENUE
MAYWOOD, IL 60153
Tel: 708-343-7738 Fax: 708-343-9065
WWW.AVWEQUIPMENT.COM

- COMPANY PROPRIETARY NOTE -

THIS DRAWING AND ITS DESIGNS ARE PROPERTY OF AVW EQUIPMENT CO. & IT IS NOT TO BE USED OR REPRODUCED WITHOUT THE PERMISSION FROM AVW CO.

DRAWN BY

Jibin

CUSTOMER: AVW EQUIPMENT CO.

CHECKED BY

PROJECT: TR4- Dual Arm Top Brush Hydraulic

QTY

DESCRIPTION: Dual Arm Top Brush Hydraulic

RELEASE DATE

7/19/2022

PART NUMBER: TR4- Dual Arm Top Brush Hydraulic Rev1 REV# 02

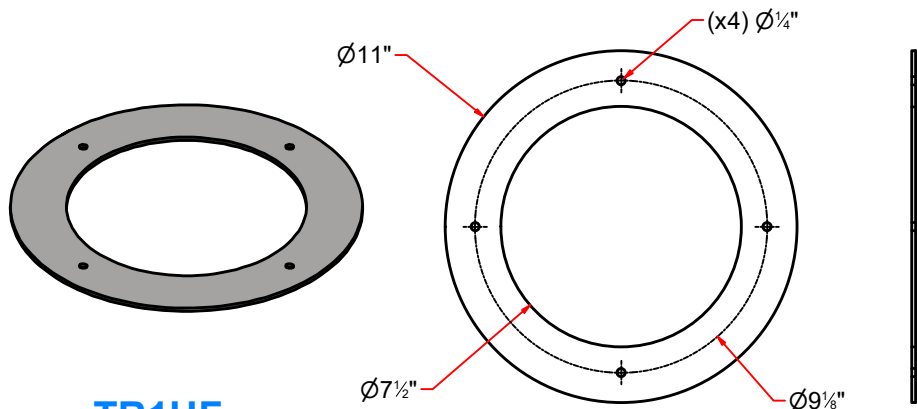
DIMENSION ARE IN INCHES & PROVIDED PRIOR TO SURFACE TREATMENTS, UNLESS NOTED.

SIZE A

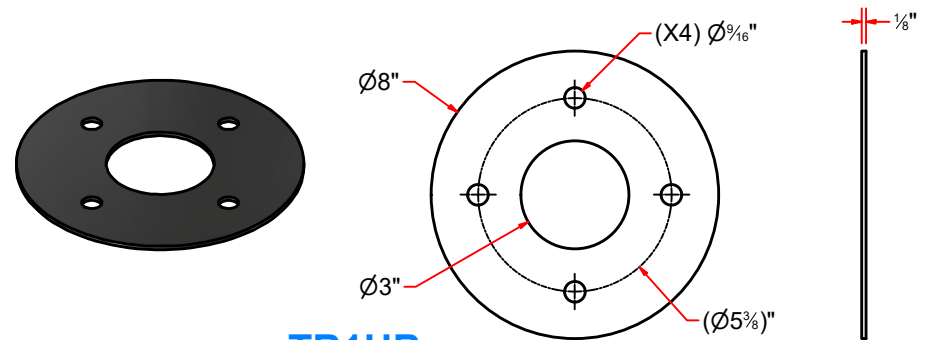
EST WEIGHT:

SHEET 34 of 43

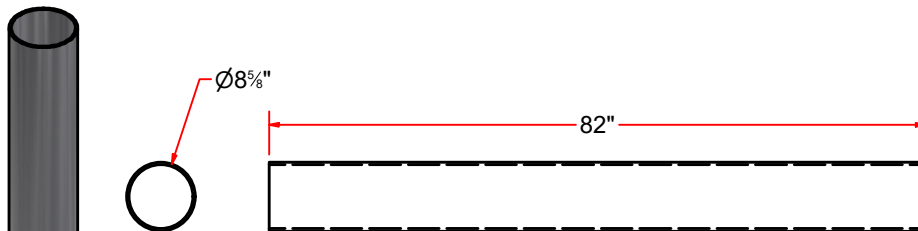
PATH:L:\Designs\Product Lines\TB - Top Brush\TR4 - Dual Arm Top Brush\2D Drawing\TR4- Dual Arm Top Brush Hydraulic Rev1.dwg



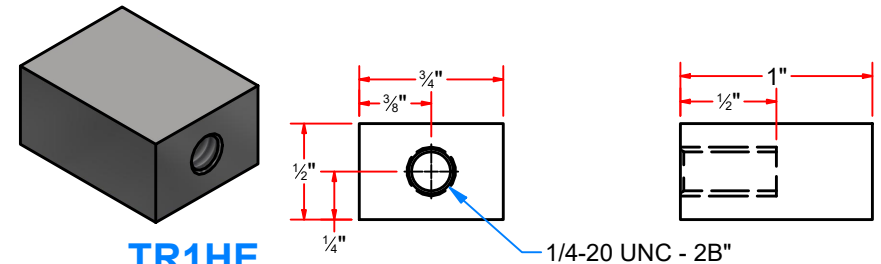
TR1HF
Ring #1/8" x 7 1/2" I.D. x 11" O.D.



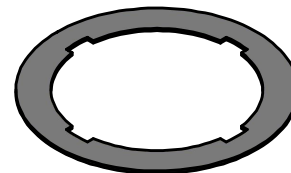
TR1HB
Plate #1/8 OD 7.981"



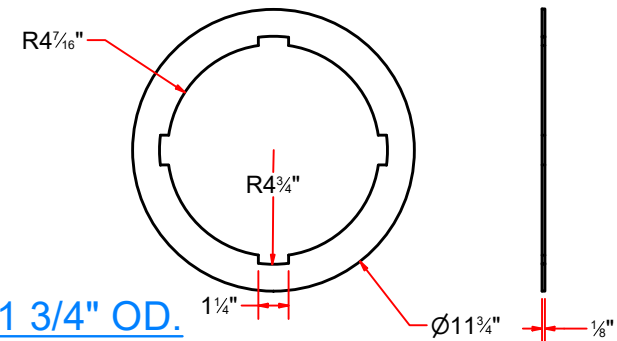
TR1HC
Pipe Sch 40 8 5/8" O.D. x 0.322 in x 82" LG.



TR1HE
Bar Flat #1/2" x 3/4" x 1" LG.



TR1HAC
Brush Plastic Ring #1/8" 11 3/4" OD.



AVW EQUIPMENT CO., INC.
105 S. 9TH AVENUE
MAYWOOD, IL 60153
Tel: 708-343-7738 Fax: 708-343-9065
WWW.AVWEQUIPMENT.COM

- COMPANY PROPRIETARY NOTE -
THIS DRAWING AND ITS DESIGNS ARE PROPERTY OF AVW EQUIPMENT CO. &
IT IS NOT TO BE USED OR REPRODUCED WITHOUT THE PERMISSION FROM AVW CO.

DRAWN BY

Jibin

CUSTOMER: AVW EQUIPMENT CO.

CHECKED BY

PROJECT: TR4- Dual Arm Top Brush Hydraulic

QTY

DESCRIPTION: Dual Arm Top Brush Hydraulic

RELEASE DATE

7/19/2022

PART NUMBER: TR4- Dual Arm Top Brush Hydraulic Rev1 REV# 02

DIMENSION ARE IN INCHES & PROVIDED PRIOR
TO SURFACE TREATMENTS, UNLESS NOTED.

SIZE
A

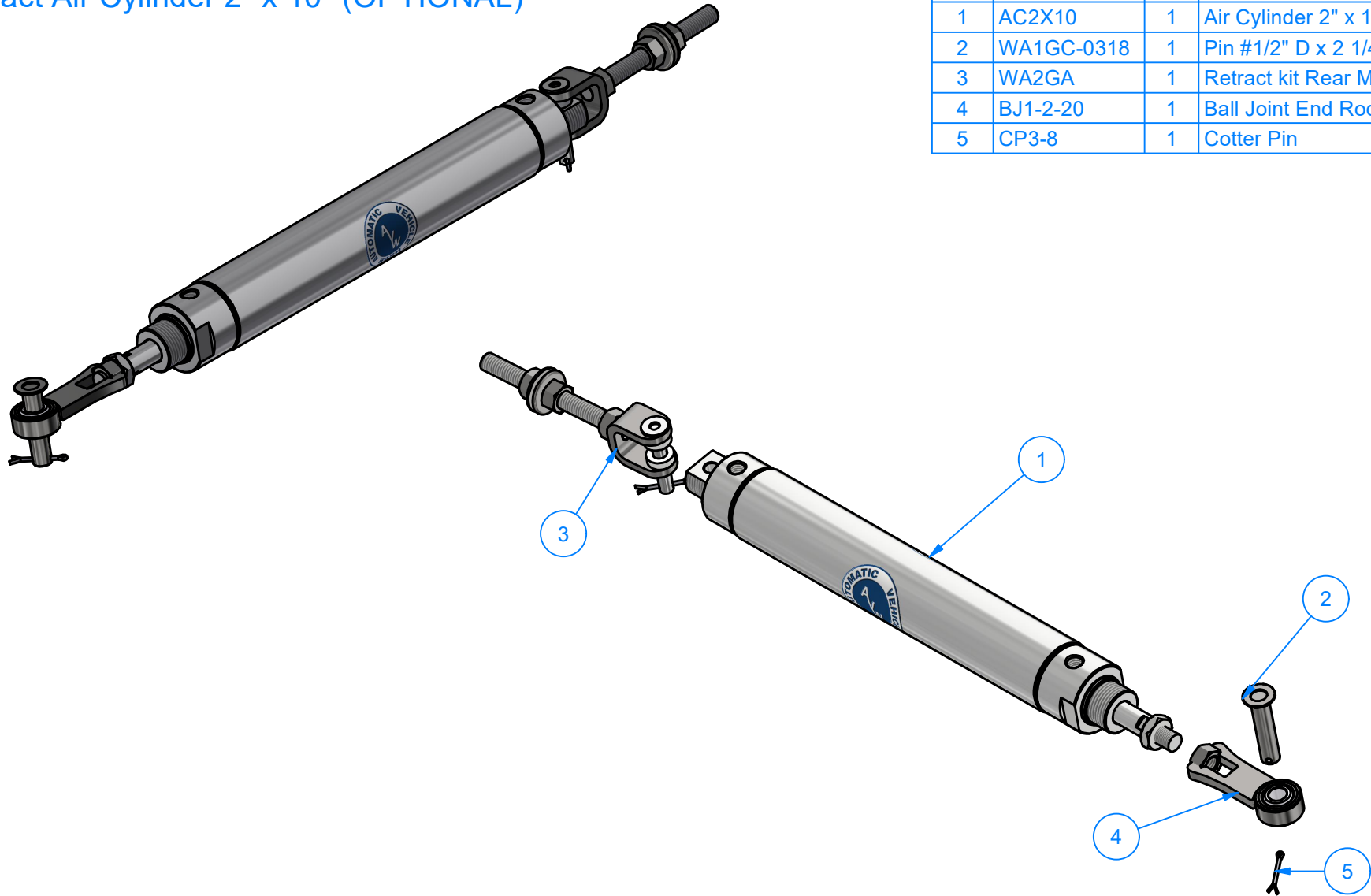
EST WEIGHT:

SHEET 35 of 43

PATH:L:\Designs\Product Lines\TB - Top Brush\TR4 - Dual Arm Top Brush\2D Drawing\TR4- Dual Arm Top Brush Hydraulic Rev1.dwg

TR1R

Retract Air Cylinder 2" x 10" (OPTIONAL)



Parts List			
ITEM	PART NUMBER	QTY	DESCRIPTION
1	AC2X10	1	Air Cylinder 2" x 10"
2	WA1GC-0318	1	Pin #1/2" D x 2 1/4" LG
3	WA2GA	1	Retract kit Rear Mounting Assy
4	BJ1-2-20	1	Ball Joint End Rod
5	CP3-8	1	Cotter Pin



AVW EQUIPMENT CO., INC.
105 S. 9TH AVENUE
MAYWOOD, IL 60153
Tel: 708-343-7738 Fax: 708-343-9065
WWW.AVWEQUIPMENT.COM

- COMPANY PROPRIETARY NOTE -

THIS DRAWING AND ITS DESIGNS ARE PROPERTY OF AVW EQUIPMENT CO. & IT IS NOT TO BE USED OR REPRODUCED WITHOUT THE PERMISSION FROM AVW CO.

DRAWN BY

Jibin

CUSTOMER: AVW EQUIPMENT CO.

CHECKED BY

PROJECT: TR4- Dual Arm Top Brush Hydraulic

QTY

DESCRIPTION: Dual Arm Top Brush Hydraulic

RELEASE DATE

7/19/2022

PART NUMBER: TR4- Dual Arm Top Brush Hydraulic Rev1 REV# 02

DIMENSION ARE IN INCHES & PROVIDED PRIOR TO SURFACE TREATMENTS, UNLESS NOTED.

SIZE
A

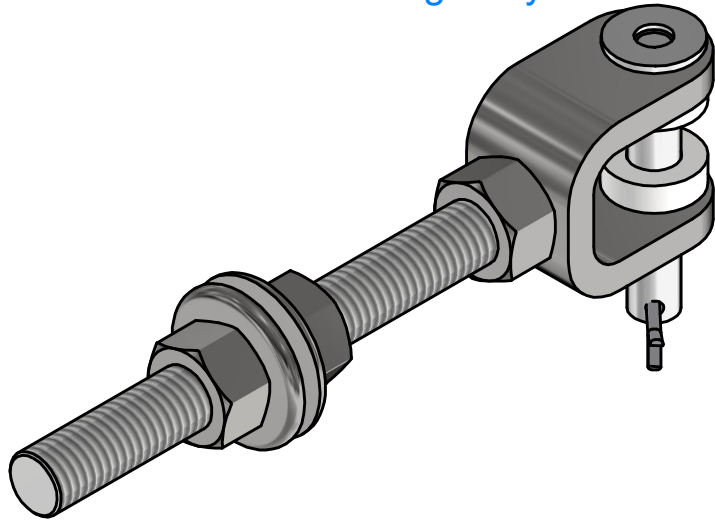
EST WEIGHT:

SHEET 36 of 43

PATH:L:\Designs\Product Lines\TB - Top Brush\TR4 - Dual Arm Top Brush\2D Drawing\TR4- Dual Arm Top Brush Hydraulic Rev1.dwg

WA2GA

Retract kit Rear Mounting Assy

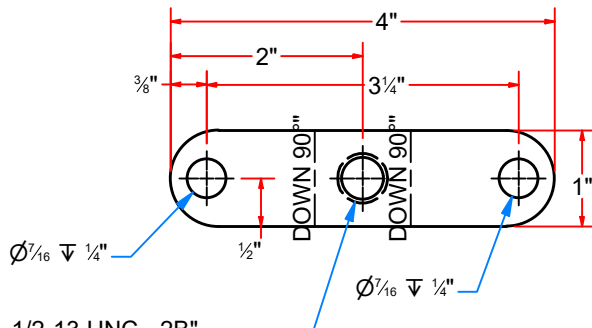
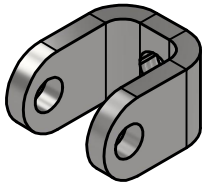


Parts List			
ITEM	PART NUMBER	QTY	DESCRIPTION
1	FW12	2	1/2" Flat Washer
2	WA2GA2	1	Threaded Rod 1/2"-13 X 5" LG.
3	CP3-8	1	Cotter Pin
4	HN1213	3	1/2" - 13 UNC Hex Nut
5	WA2GA1	1	Clevis w/ threaded hole
6	WA1GB-0318	1	Pin 3/8" x 2 1/4" LG
7	WA2GA3	2	Retract kit Rear Mount Bush

Parts List			
ITEM	PART NUMBER	QTY	DESCRIPTION
6.1	FW14	1	Flat Washer 1/4"
6.2	WA1GBA-0318	1	Pin 3/8" x 2 1/4" L

WA2GA1

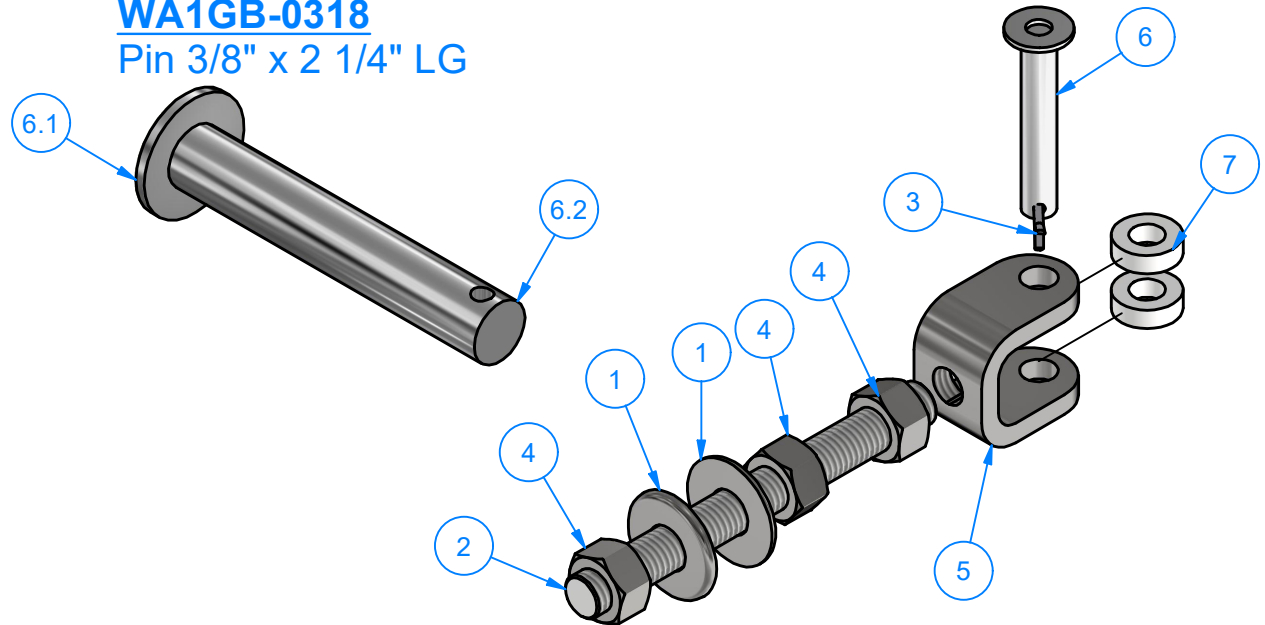
Clevis w/ threaded hole



1/2-13 UNC - 2B"
During Laser Cutting,
The size of hole is 1/4".
Then after bending,
ream the hole to have
thread of size 1/2"x13 UNC

WA1GB-0318

Pin 3/8" x 2 1/4" LG



AVW EQUIPMENT CO., INC.
105 S. 9TH AVENUE
MAYWOOD, IL 60153
Tel: 708-343-7738 Fax: 708-343-9065
WWW.AVWEQUIPMENT.COM

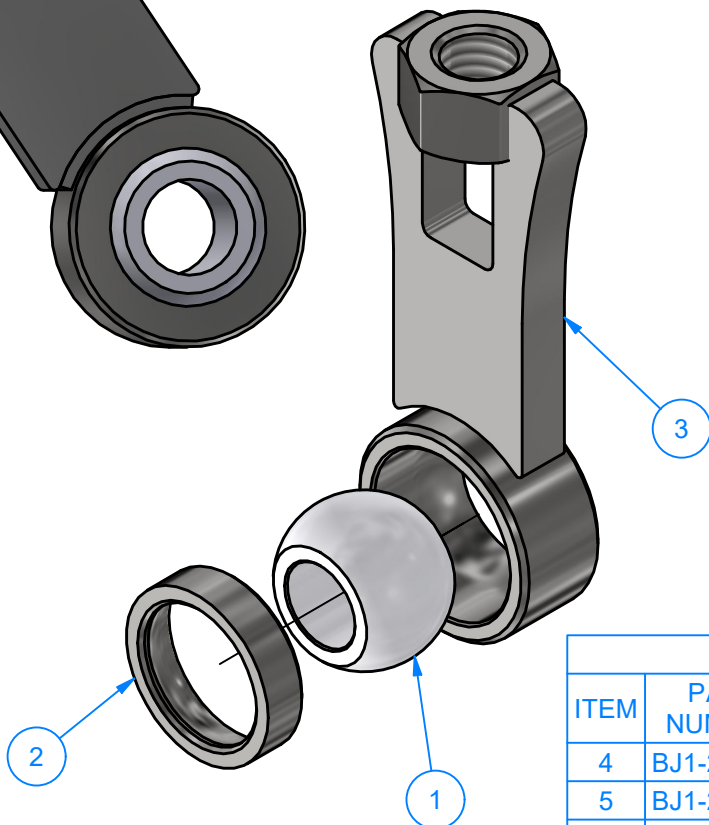
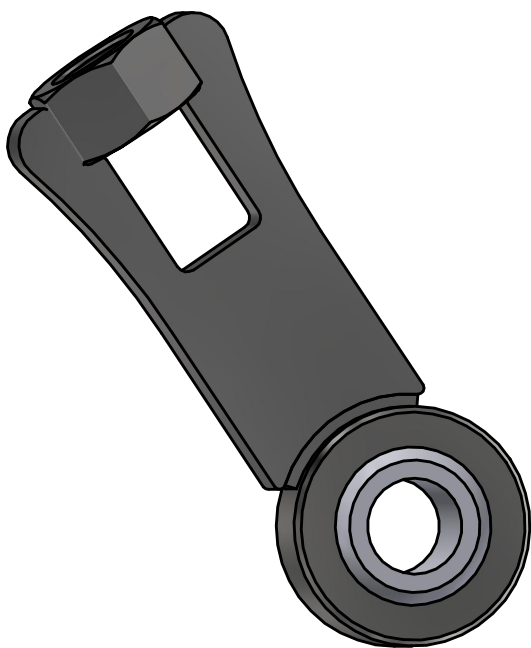
- COMPANY PROPRIETARY NOTE -
THIS DRAWING AND ITS DESIGNS ARE PROPERTY OF AVW EQUIPMENT CO. &
IT IS NOT TO BE USED OR REPRODUCED WITHOUT THE PERMISSION FROM AVW CO.

DRAWN BY	Jibin	CUSTOMER: AVW EQUIPMENT CO.	
CHECKED BY		PROJECT: TR4- Dual Arm Top Brush Hydraulic	
QTY		DESCRIPTION: Dual Arm Top Brush Hydraulic	
RELEASE DATE	7/19/2022	PART NUMBER: TR4- Dual Arm Top Brush Hydraulic	Rev1 REV# 02
DIMENSION ARE IN INCHES & PROVIDED PRIOR TO SURFACE TREATMENTS, UNLESS NOTED.		SIZE A	EST WEIGHT: SHEET 37 of 43

PATH:L:\Designs\Product Lines\TB - Top Brush\TR4 - Dual Arm Top Brush\2D Drawing\TR4- Dual Arm Top Brush Hydraulic Rev1.dwg

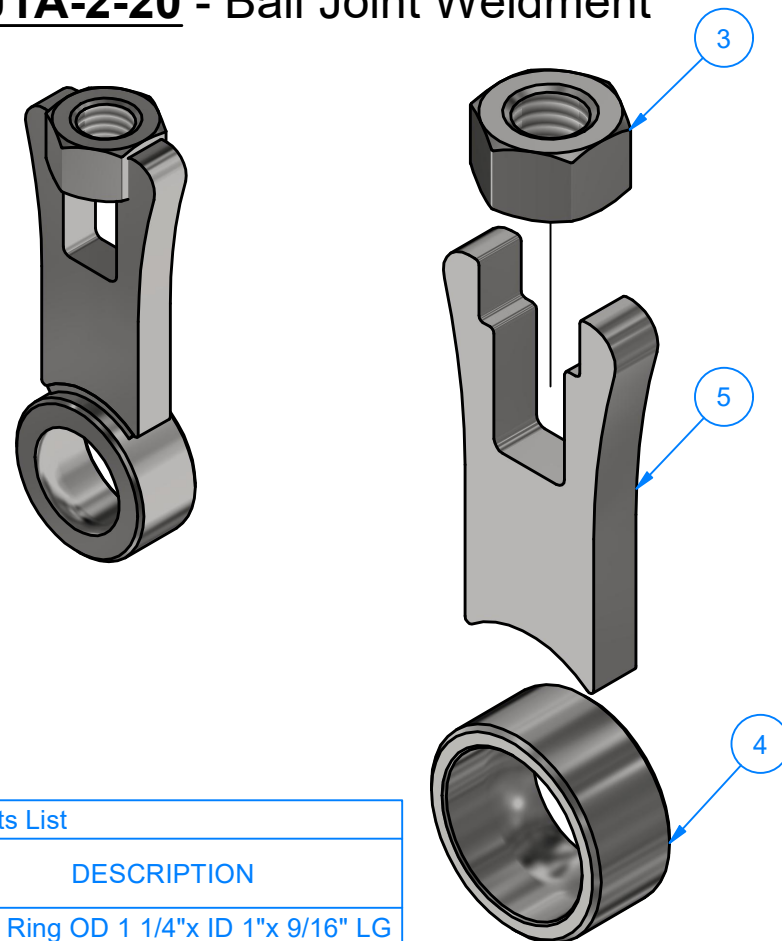
BJ1-2-20

Ball Joint End Rod



Parts List			
ITEM	PART NUMBER	QTY	DESCRIPTION
1	BJ1-2-20A	1	Nylon Ball Insert 1" OD. x 1/2" ID. x 5/8" LG
2	BJ1-2-20B	1	Small Ring OD 1"xID 3/4"x1/4"LG
3	BJ1A-2-20	1	Ball Joint Weldment

BJ1A-2-20 - Ball Joint Weldment



Parts List			
ITEM	PART NUMBER	QTY	DESCRIPTION
4	BJ1-2-20C	1	Large Ring OD 1 1/4"x ID 1"x 9/16" LG
5	BJ1-2-20D	1	Cylinder Lever #5/16x 1 9/32"x 2 3/8"
3	HN1213	1	1/2" - 13 UNC Hex Nut



AVW EQUIPMENT CO., INC.
105 S. 9TH AVENUE
MAYWOOD, IL 60153
Tel: 708-343-7738 Fax: 708-343-9065
WWW.AVWEQUIPMENT.COM

- COMPANY PROPRIETARY NOTE -

THIS DRAWING AND ITS DESIGNS ARE PROPERTY OF AVW EQUIPMENT CO. & IT IS NOT TO BE USED OR REPRODUCED WITHOUT THE PERMISSION FROM AVW CO.

DRAWN BY

Jibin

CUSTOMER: AVW EQUIPMENT CO.

CHECKED BY

PROJECT: TR4- Dual Arm Top Brush Hydraulic

QTY

DESCRIPTION: Dual Arm Top Brush Hydraulic

RELEASE DATE

7/19/2022

PART NUMBER: TR4- Dual Arm Top Brush Hydraulic Rev1 REV# 02

DIMENSION ARE IN INCHES & PROVIDED PRIOR TO SURFACE TREATMENTS, UNLESS NOTED.

SIZE
A

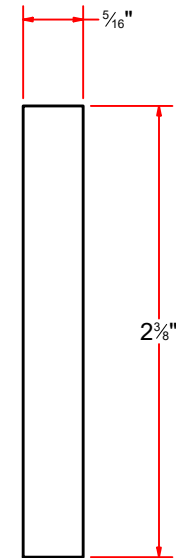
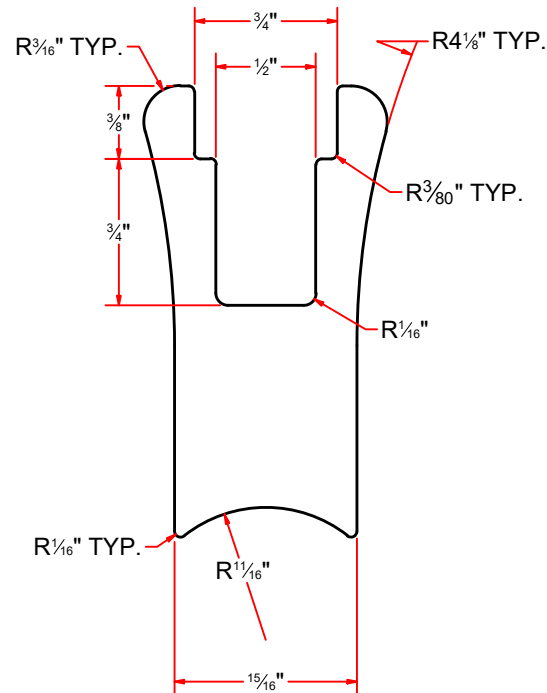
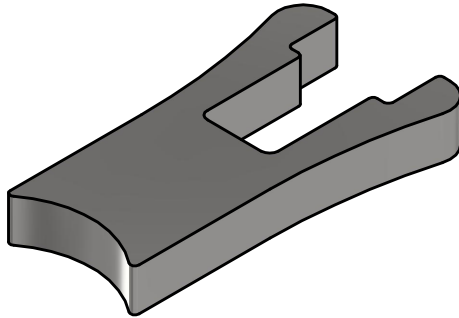
EST WEIGHT:

SHEET 38 of 43

PATH:L:\Designs\Product Lines\TB - Top Brush\TR4 - Dual Arm Top Brush\2D Drawing\TR4- Dual Arm Top Brush Hydraulic Rev1.dwg

BJ1-2-20D

Cylinder Lever #5/16x 1 9/32"x 2 3/8"



AVW EQUIPMENT CO., INC.
105 S. 9TH AVENUE
MAYWOOD, IL 60153
Tel: 708-343-7738 Fax: 708-343-9065
WWW.AVWEQUIPMENT.COM

- COMPANY PROPRIETARY NOTE -

THIS DRAWING AND ITS DESIGNS ARE PROPERTY OF AVW EQUIPMENT CO. & IT IS NOT TO BE USED OR REPRODUCED WITHOUT THE PERMISSION FROM AVW CO.

DRAWN BY

Jibin

CUSTOMER: AVW EQUIPMENT CO.

CHECKED BY

PROJECT: TR4- Dual Arm Top Brush Hydraulic

QTY

DESCRIPTION: Dual Arm Top Brush Hydraulic

RELEASE DATE

7/19/2022

PART NUMBER: TR4- Dual Arm Top Brush Hydraulic Rev1 REV# 02

DIMENSION ARE IN INCHES & PROVIDED PRIOR TO SURFACE TREATMENTS, UNLESS NOTED.

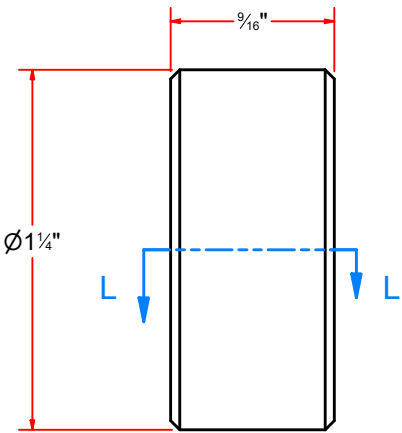
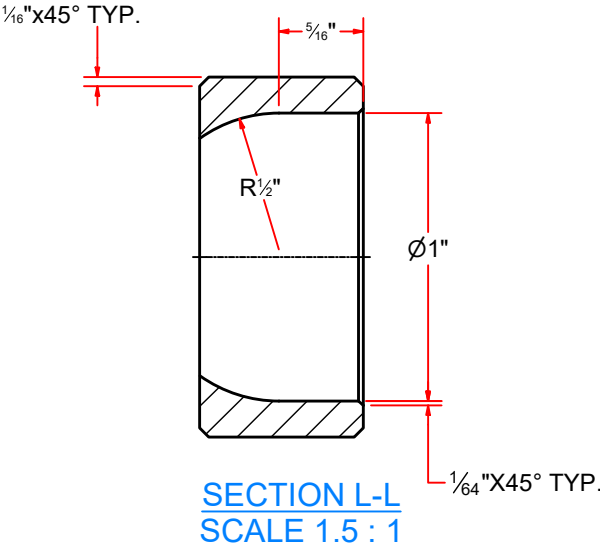
SIZE
A

EST WEIGHT:

SHEET 39 of 43

PATH:L:\Designs\Product Lines\TB - Top Brush\TR4 - Dual Arm Top Brush\2D Drawing\TR4- Dual Arm Top Brush Hydraulic Rev1.dwg

BJ1-2-20C
Large Ring OD 1 1/4"x ID 1"x 9/16" LG



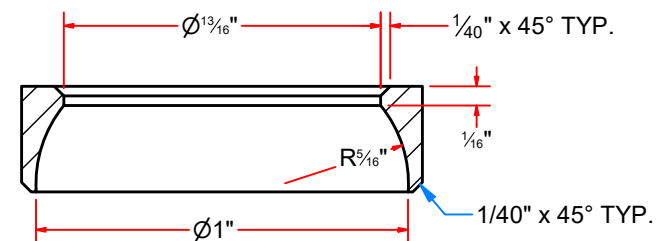
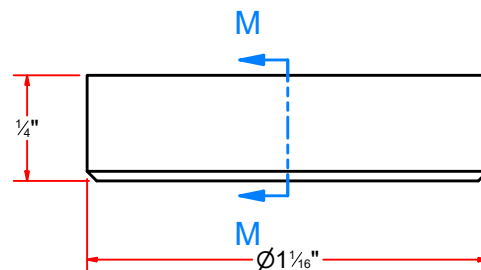
AVW EQUIPMENT CO., INC.
105 S. 9TH AVENUE
MAYWOOD, IL 60153
Tel: 708-343-7738 Fax: 708-343-9065
WWW.AVWEQUIPMENT.COM

- COMPANY PROPRIETARY NOTE -
THIS DRAWING AND ITS DESIGNS ARE PROPERTY OF AVW EQUIPMENT CO. &
IT IS NOT TO BE USED OR REPRODUCED WITHOUT THE PERMISSION FROM AVW CO.

DRAWN BY	Jibin	CUSTOMER: AVW EQUIPMENT CO.	
CHECKED BY		PROJECT: TR4- Dual Arm Top Brush Hydraulic	
QTY		DESCRIPTION: Dual Arm Top Brush Hydraulic	
RELEASE DATE	7/19/2022	PART NUMBER: TR4- Dual Arm Top Brush Hydraulic	Rev1 REV# 02
DIMENSION ARE IN INCHES & PROVIDED PRIOR TO SURFACE TREATMENTS, UNLESS NOTED.		SIZE A	EST WEIGHT: SHEET 40 of 43

BJ1-2-20B

Small Ring OD 1"xID 3/4"x1/4"LG



SECTION M-M
SCALE 2 : 1



AVW EQUIPMENT CO., INC.
105 S. 9TH AVENUE
MAYWOOD, IL 60153
Tel: 708-343-7738 Fax: 708-343-9065
WWW.AVWEQUIPMENT.COM

- COMPANY PROPRIETARY NOTE -

THIS DRAWING AND ITS DESIGNS ARE PROPERTY OF AVW EQUIPMENT CO. &
IT IS NOT TO BE USED OR REPRODUCED WITHOUT THE PERMISSION FROM AVW CO.

DRAWN BY

Jibin

CUSTOMER: AVW EQUIPMENT CO.

CHECKED BY

PROJECT: TR4- Dual Arm Top Brush Hydraulic

QTY

DESCRIPTION: Dual Arm Top Brush Hydraulic

RELEASE
DATE

7/19/2022

PART NUMBER: TR4- Dual Arm Top Brush Hydraulic Rev1 REV# 02

DIMENSION ARE IN INCHES & PROVIDED PRIOR
TO SURFACE TREATMENTS, UNLESS NOTED.

SIZE
A

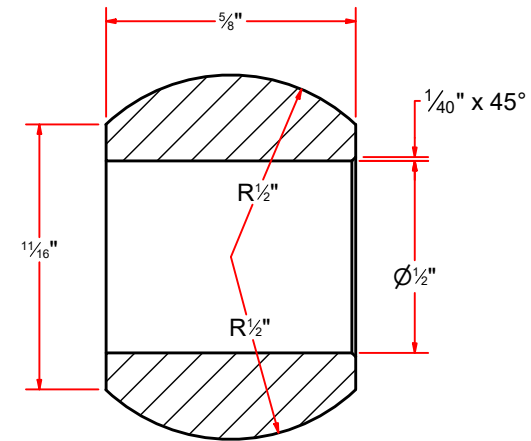
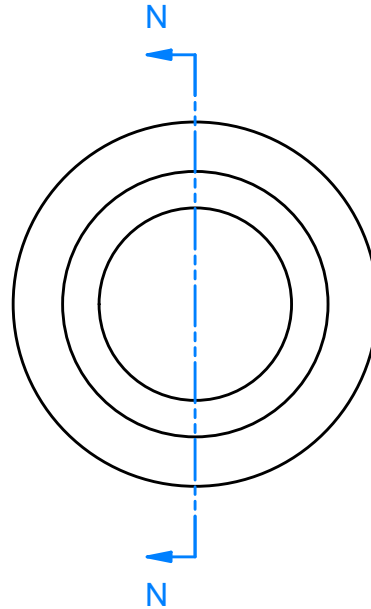
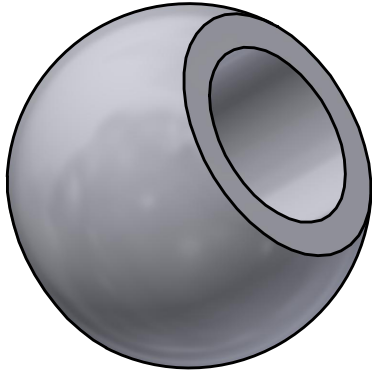
EST WEIGHT:

SHEET 41 of 43

PATH:L:\Designs\Product Lines\TB - Top Brush\TR4 - Dual Arm Top Brush\2D Drawing\TR4- Dual Arm Top Brush Hydraulic Rev1.dwg

BJ1-2-20A

Nylon Ball Insert 1" OD. x 1/2" ID. x 5/8" LG



SECTION N-N
SCALE 2 : 1



AVW EQUIPMENT CO., INC.
105 S. 9TH AVENUE
MAYWOOD, IL 60153
Tel: 708-343-7738 Fax: 708-343-9065
WWW.AVWEQUIPMENT.COM

- COMPANY PROPRIETARY NOTE -

THIS DRAWING AND ITS DESIGNS ARE PROPERTY OF AVW EQUIPMENT CO. &
IT IS NOT TO BE USED OR REPRODUCED WITHOUT THE PERMISSION FROM AVW CO.

DRAWN BY

Jibin

CUSTOMER: AVW EQUIPMENT CO.

CHECKED BY

PROJECT: TR4- Dual Arm Top Brush Hydraulic

QTY

DESCRIPTION: Dual Arm Top Brush Hydraulic

RELEASE
DATE

7/19/2022

PART NUMBER: TR4- Dual Arm Top Brush Hydraulic Rev1 REV# 02

DIMENSION ARE IN INCHES & PROVIDED PRIOR
TO SURFACE TREATMENTS, UNLESS NOTED.

SIZE
A

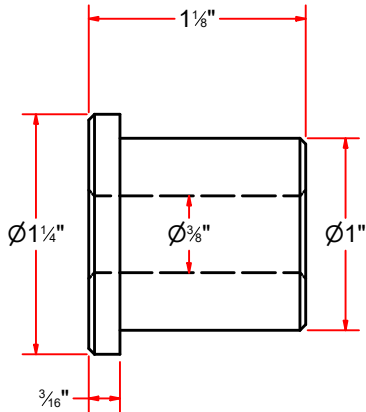
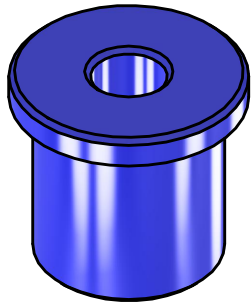
EST WEIGHT:

SHEET 42 of 43

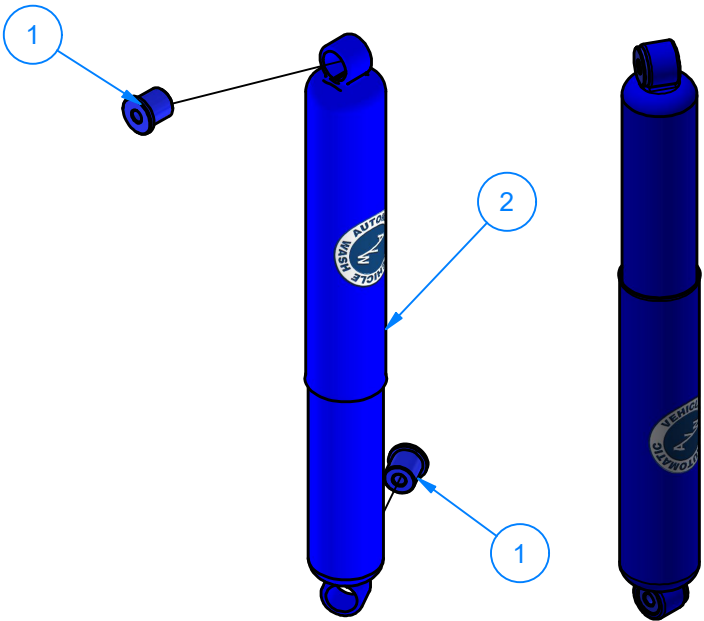
PATH:L:\Designs\Product Lines\TB - Top Brush\TR4 - Dual Arm Top Brush\2D Drawing\TR4- Dual Arm Top Brush Hydraulic Rev1.dwg

WA1FA
Blue Shock Absorber Assembly

Parts List		
ITEM	QTY	DESCRIPTION
1	2	UHMW Bush. 3/8ID x1OD x 1-1/8L
2	1	Shock Absorber (Without Bushings)



UHMW Bush. 3/8ID x1OD x 1-1/8L



AVW EQUIPMENT CO., INC.
105 S. 9TH AVENUE
MAYWOOD, IL 60153
Tel: 708-343-7738 Fax: 708-343-9065
WWW.AVWEQUIPMENT.COM

- COMPANY PROPRIETARY NOTE -
THIS DRAWING AND ITS DESIGNS ARE PROPERTY OF AVW EQUIPMENT CO. &
IT IS NOT TO BE USED OR REPRODUCED WITHOUT THE PERMISSION FROM AVW CO.

DRAWN BY	Jibin	CUSTOMER: AVW EQUIPMENT CO.	
CHECKED BY		PROJECT: TR4- Dual Arm Top Brush Hydraulic	
QTY		DESCRIPTION: Dual Arm Top Brush Hydraulic	
RELEASE DATE	7/19/2022	PART NUMBER: TR4- Dual Arm Top Brush Hydraulic	Rev1 REV# 02
DIMENSION ARE IN INCHES & PROVIDED PRIOR TO SURFACE TREATMENTS, UNLESS NOTED.		SIZE A	EST WEIGHT: SHEET 43 of 43