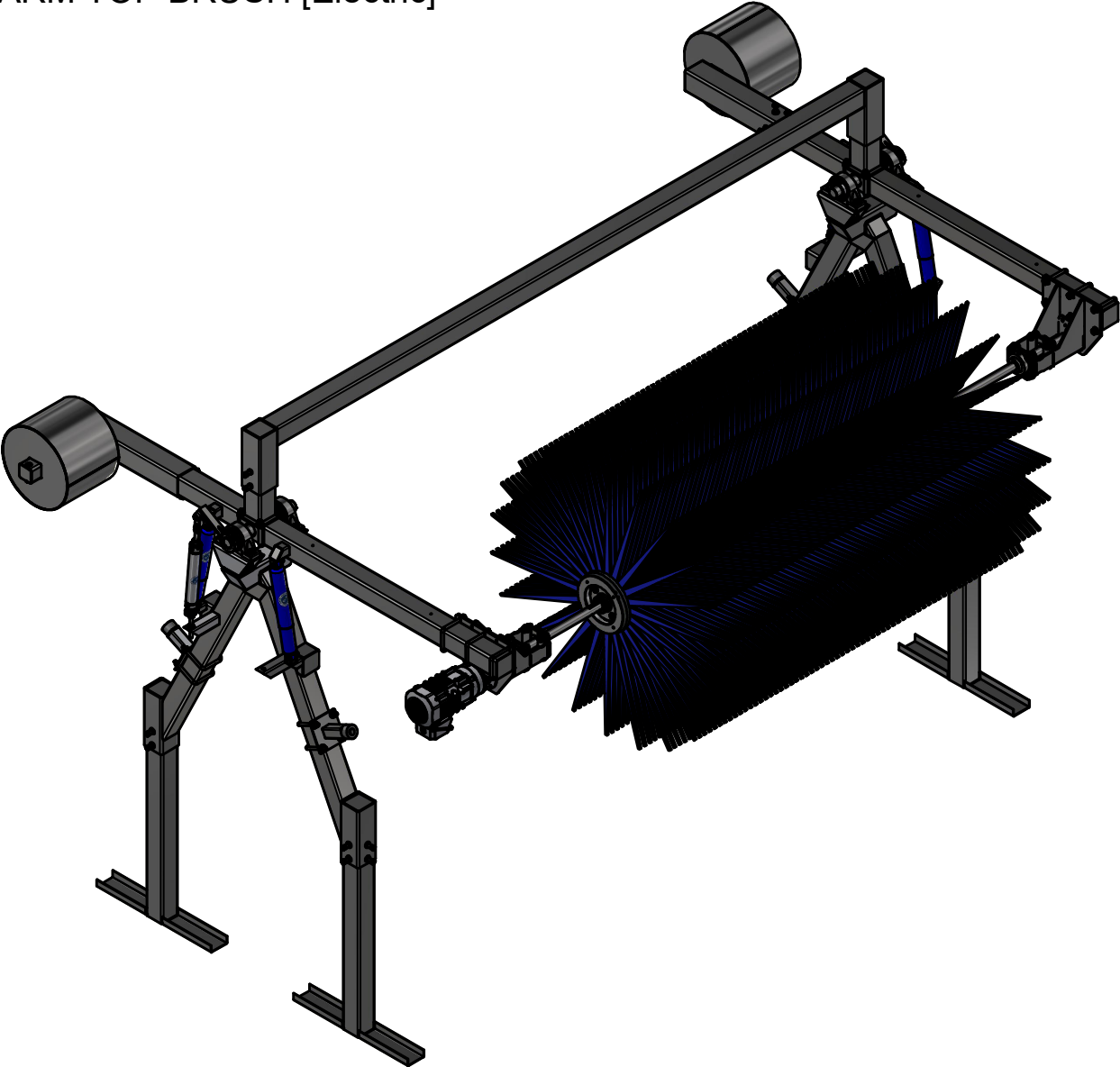


TR4-EL - DUAL ARM TOP BRUSH [Electric]




AVW EQUIPMENT CO., INC.
105 S. 9TH AVENUE
MAYWOOD, IL 60153
Tel: 708-343-7738 Fax: 708-343-9065
WWW.AVWEQUIPMENT.COM

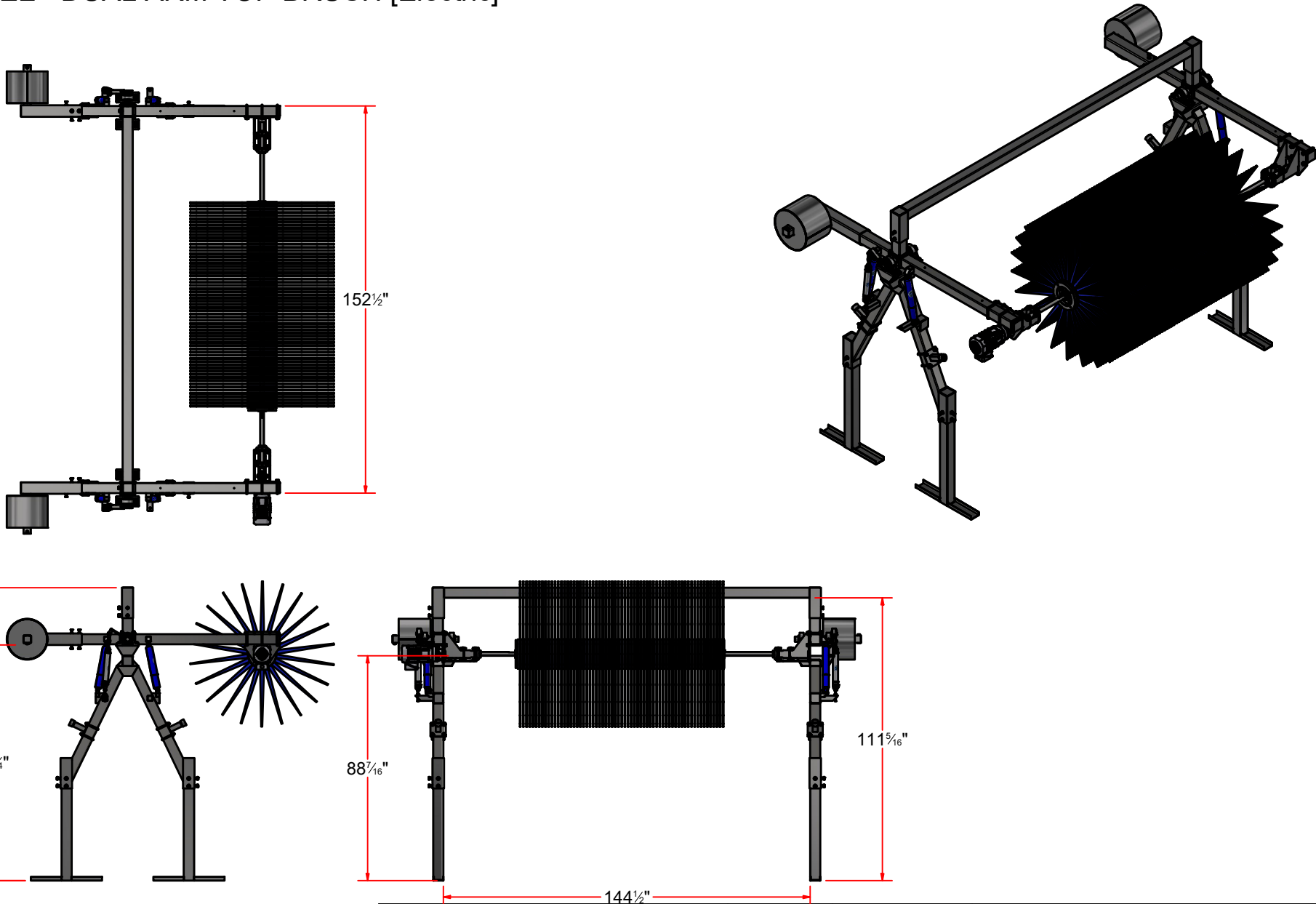
- COMPANY PROPRIETARY NOTE -
THIS DRAWING AND ITS DESIGNS ARE PROPERTY OF AVW EQUIPMENT CO. &
IT IS NOT TO BE USED OR REPRODUCED WITHOUT THE PERMISSION FROM AVW CO.

DRAWN BY	Tittu	CUSTOMER: AVW Equipment Co.	
CHECKED BY		PROJECT: TR4 - Dual Arm Top Brush Hydraulic	
QTY		DESCRIPTION: DUAL ARM TOP BRUSH [Electric]	
RELEASE DATE	7/30/2021	PART NUMBER: TR4-EL	REV#
DIMENSION ARE IN INCHES & PROVIDED PRIOR TO SURFACE TREATMENTS, UNLESS NOTED.		SIZE A	EST WEIGHT:
			SHEET 1 of 42

REVISION HISTORY					
ECO No.	REV	DESCRIPTION	DATE	ENGINEER	APPROVED
		INITIAL RELEASE	07/30/2021	Tittu	Dusan
CON12	01	1. Replaced motor mount with new universal motor mount	12/27/2021	Tittu	Dusan

 <p>AVW EQUIPMENT CO., INC. 105 S. 9TH AVENUE MAYWOOD, IL 60153 Tel: 708-343-7738 Fax: 708-343-9065 WWW.AVWEQUIPMENT.COM</p>	DRAWN BY	Tittu	CUSTOMER: AVW Equipment Co.		
	CHECKED BY		PROJECT: TR4 - Dual Arm Top Brush Hydraulic		
	QTY		DESCRIPTION:		
	- COMPANY PROPRIETARY NOTE - THIS DRAWING AND ITS DESIGNS ARE PROPERTY OF AVW EQUIPMENT CO. & IT IS NOT TO BE USED OR REPRODUCED WITHOUT THE PERMISSION FROM AVW CO.		RELEASE DATE	7/30/2021	PART NUMBER:
		DIMENSION ARE IN INCHES & PROVIDED PRIOR TO SURFACE TREATMENTS, UNLESS NOTED.		SIZE A	EST WEIGHT:
PATH:				REV#	SHEET 2 of 42

TR4-EL - DUAL ARM TOP BRUSH [Electric]

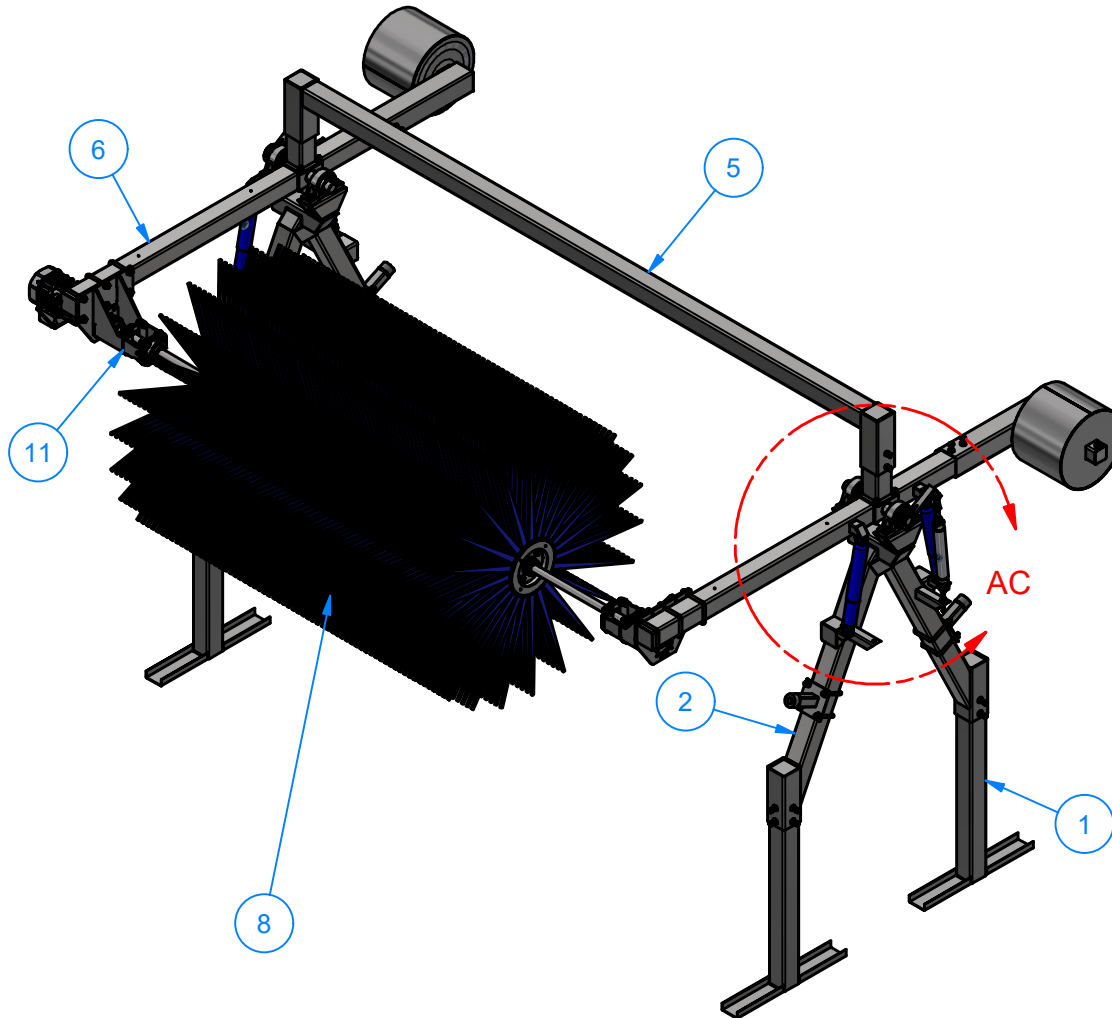


AVW EQUIPMENT CO., INC.
105 S. 9TH AVENUE
MAYWOOD, IL 60153
Tel: 708-343-7738 Fax: 708-343-9065
WWW.AVWEQUIPMENT.COM

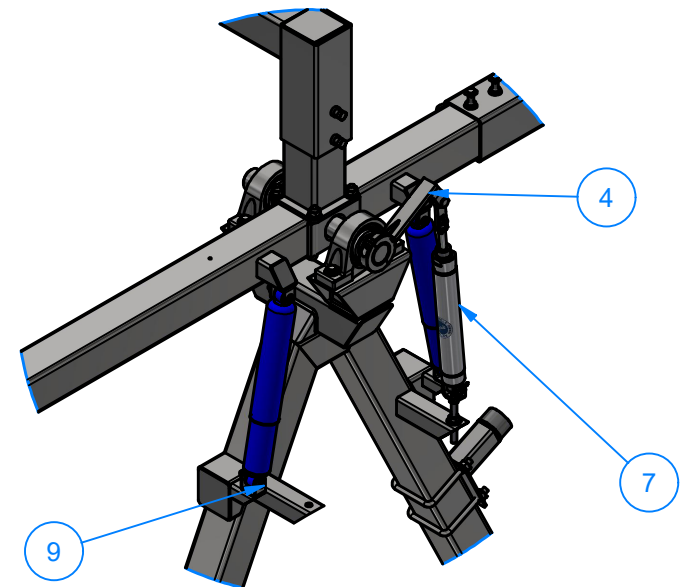
- COMPANY PROPRIETARY NOTE -
THIS DRAWING AND ITS DESIGNS ARE PROPERTY OF AVW EQUIPMENT CO. &
IT IS NOT TO BE USED OR REPRODUCED WITHOUT THE PERMISSION FROM AVW CO.

DRAWN BY	Tittu	CUSTOMER: AVW Equipment Co.	
CHECKED BY		PROJECT: TR4 - Dual Arm Top Brush Hydraulic	
QTY		DESCRIPTION: DUAL ARM TOP BRUSH [Electric]	
RELEASE DATE	7/30/2021	PART NUMBER: TR4-EL	REV#
DIMENSION ARE IN INCHES & PROVIDED PRIOR TO SURFACE TREATMENTS, UNLESS NOTED.		SIZE A	EST WEIGHT:
			SHEET 3 of 42

TR4-EL - DUAL ARM TOP BRUSH [Electric]



Parts List		
ITEM	QTY	DESCRIPTION
1	4	Top Brush Leg Weldment
2	2	Top Brush Penta Arch
3	4	Blue Shock Absorber Assembly
4	2	Air Cylinder Bracket-Top Brush
5	1	Dual Arm Top Brush Crossbar
6	1	Top Brush Arm [D]108 LG.
7	2	Retract Air Cylinder 2" x 10" (OPTIONAL)
8	1	Top Brush w/ Core
9	8	Pin 3/8" x 2 1/2" LG
10	1	Top Brush Arm [P]108 LG.
11	1	Shaft Assembly With Parts
23	8	3/8" Set Screw Collar



DETAIL AC



AVW EQUIPMENT CO., INC.
105 S. 9TH AVENUE
MAYWOOD, IL 60153
Tel: 708-343-7738 Fax: 708-343-9065
WWW.AVWEQUIPMENT.COM

- COMPANY PROPRIETARY NOTE -

THIS DRAWING AND ITS DESIGNS ARE PROPERTY OF AVW EQUIPMENT CO. & IT IS NOT TO BE USED OR REPRODUCED WITHOUT THE PERMISSION FROM AVW CO.

DRAWN BY

Tittu

CUSTOMER: AVW Equipment Co.

CHECKED BY

PROJECT: TR4 - Dual Arm Top Brush Hydraulic

QTY

DESCRIPTION: DUAL ARM TOP BRUSH [Electric]

RELEASE DATE

7/30/2021

PART NUMBER: TR4-EL

REV#

DIMENSION ARE IN INCHES & PROVIDED PRIOR TO SURFACE TREATMENTS, UNLESS NOTED.

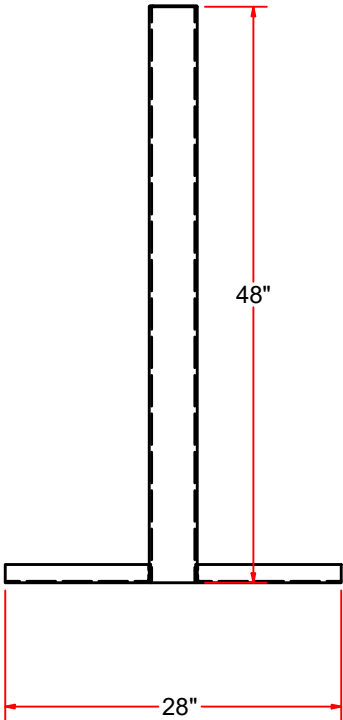
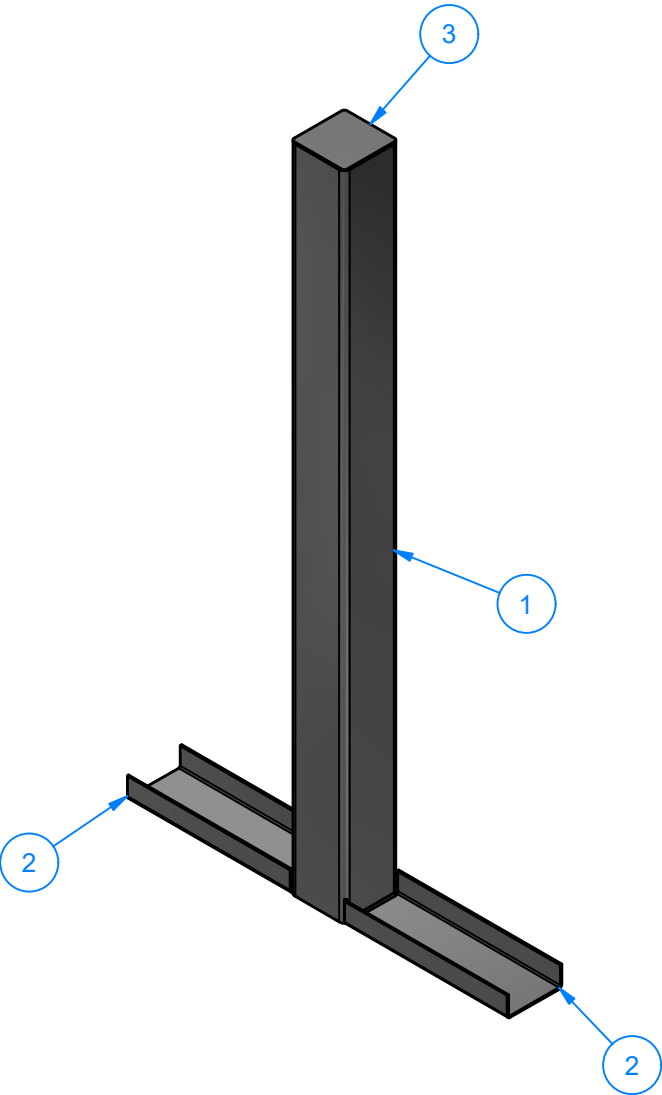
SIZE
A

EST WEIGHT:

SHEET 4 of 42

PATH:L:\Designs\Product Lines\TB - Top Brush\TR4-EL - Dual Arm Top Brush Electric\Dual Arm Top Brush Electric.iam

TR1A - Top Brush Leg Weldment



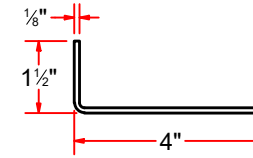
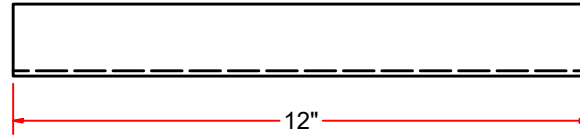
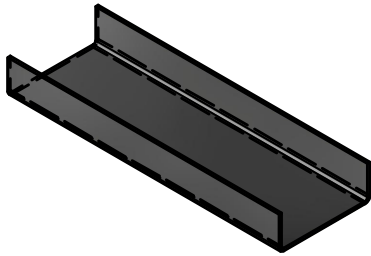
Parts List		
ITEM	QTY	DESCRIPTION
1	1	Sq. Tube #3/16" x 4" x 4" x 48" LG
2	2	Sheet Metal #12Ga x 7" x 12" LG
3	1	Sq. SS Plate 14Ga x 3 15/16




AVW EQUIPMENT CO., INC.
105 S. 9TH AVENUE
MAYWOOD, IL 60153
Tel: 708-343-7738 Fax: 708-343-9065
WWW.AVWEQUIPMENT.COM

- COMPANY PROPRIETARY NOTE -
THIS DRAWING AND ITS DESIGNS ARE PROPERTY OF AVW EQUIPMENT CO. &
IT IS NOT TO BE USED OR REPRODUCED WITHOUT THE PERMISSION FROM AVW CO.

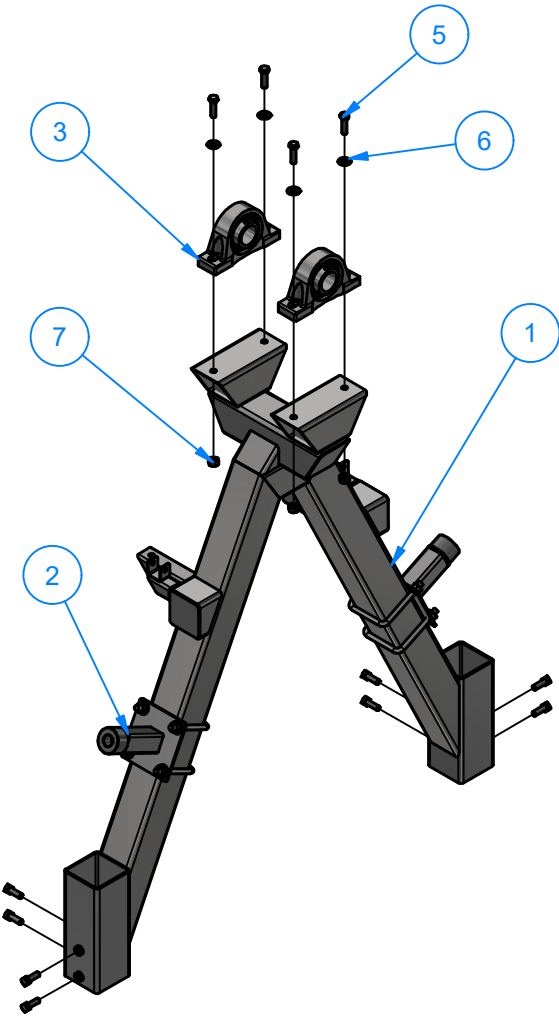
DRAWN BY	Tittu	CUSTOMER: AVW Equipment Co.	
CHECKED BY		PROJECT: TR4 - Dual Arm Top Brush Hydraulic	
QTY		DESCRIPTION: Top Brush Leg Weldment	
RELEASE DATE	7/30/2021	PART NUMBER: TR1A	REV#
DIMENSION ARE IN INCHES & PROVIDED PRIOR TO SURFACE TREATMENTS, UNLESS NOTED.		SIZE A	EST WEIGHT: SHEET 5 of 42



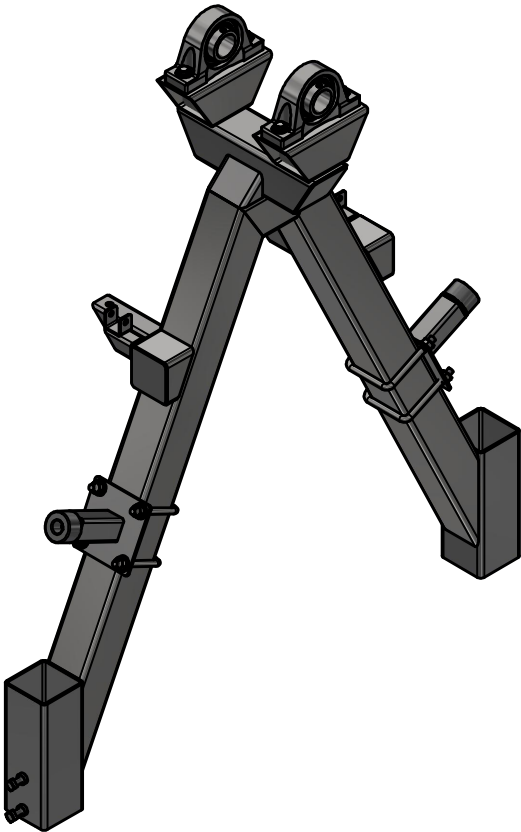
Sheet Metal #12Ga x 7" x 12" LG

 <div>AVW EQUIPMENT CO., INC. 105 S. 9TH AVENUE MAYWOOD, IL 60153 Tel: 708-343-7738 Fax: 708-343-9065 WWW.AVWEQUIPMENT.COM</div>	DRAWN BY	Tittu	CUSTOMER: AVW Equipment Co.		
	CHECKED BY		PROJECT: TR4 - Dual Arm Top Brush Hydraulic		
	QTY		DESCRIPTION: Sheet Metal #12Ga x 7" x 12" LG		
- COMPANY PROPRIETARY NOTE - THIS DRAWING AND ITS DESIGNS ARE PROPERTY OF AVW EQUIPMENT CO. & IT IS NOT TO BE USED OR REPRODUCED WITHOUT THE PERMISSION FROM AVW CO.	RELEASE DATE	7/30/2021	PART NUMBER: TR1AA		REV#
	DIMENSION ARE IN INCHES & PROVIDED PRIOR TO SURFACE TREATMENTS, UNLESS NOTED.		SIZE A	EST WEIGHT:	SHEET 6 of 42
PATH:L:\Libraries\Productivity\Top Brush\TBL-Top Brush Leg\Parts\TBLA002.ipt					

TR1B0513 - Top Brush Penta Arch



Parts List		
ITEM	QTY	DESCRIPTION
1	1	Top Brush Beam
2	2	Top Brush Bumper Assembly
3	2	2" Pillow Block
5	4	1/2"-13 x 1.75" L Hex Screw
6	4	1/2" Flat Washer
7	4	1/2-13 Hex Nut
10	8	Square Bolt 1/2-13x1.5

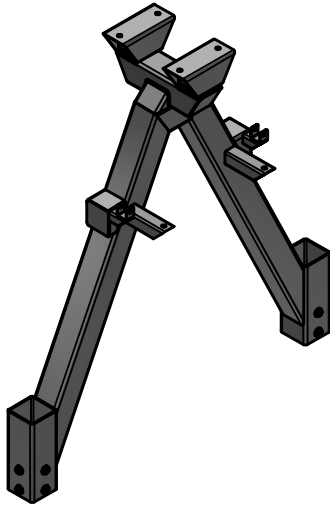


AVW EQUIPMENT CO., INC.
105 S. 9TH AVENUE
MAYWOOD, IL 60153
Tel: 708-343-7738 Fax: 708-343-9065
WWW.AVWEQUIPMENT.COM

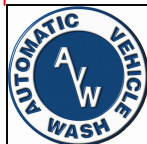
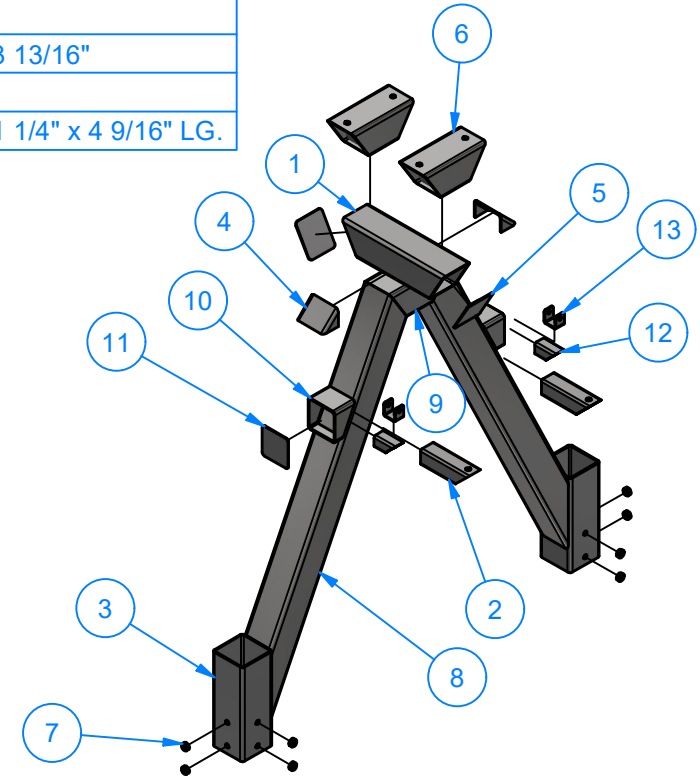
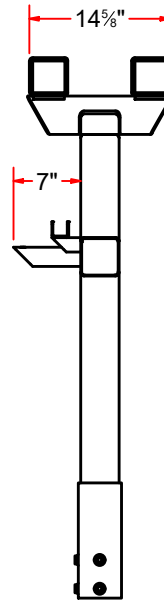
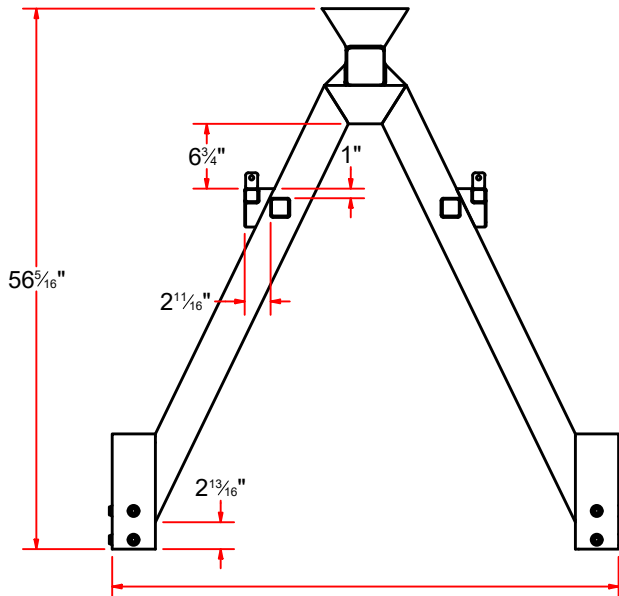
- COMPANY PROPRIETARY NOTE -
THIS DRAWING AND ITS DESIGNS ARE PROPERTY OF AVW EQUIPMENT CO. &
IT IS NOT TO BE USED OR REPRODUCED WITHOUT THE PERMISSION FROM AVW CO.

DRAWN BY	Tittu	CUSTOMER: AVW Equipment Co.	
CHECKED BY		PROJECT: TR4 - Dual Arm Top Brush Hydraulic	
QTY		DESCRIPTION: Top Brush Penta Arch	
RELEASE DATE	7/30/2021	PART NUMBER: TR1B0513	REV#
DIMENSION ARE IN INCHES & PROVIDED PRIOR TO SURFACE TREATMENTS, UNLESS NOTED.		SIZE A	EST WEIGHT: SHEET 7 of 42

TR1BA0513 - Top Brush Beam



Parts List		
ITEM	QTY	DESCRIPTION
1	1	Sq. Tube 4" x 4" x 15" LG
2	2	Sq. Tube 2"x 2" x 7" LG
3	2	Sq. Tube 4 1/2" x 4 1/2" x 12" LG
4	2	Sq. Tube 4" x 4" x 3 3/16" LG
5	2	SS Sheet Metal #12Ga x 4 7/16" x 3 13/16"
6	2	Pillow Block Bracket
7	8	Sleeve Nut 1/2"
8	2	Sq. Tube 4" x 4" x 49" LG
9	1	Sq. Tube 4" x 4" x 8.5 "LG
10	2	Sq. Tube 4"x 4" x 3" LG
11	2	Sheet Metal #12Ga x 3 13/16" x 3 13/16"
12	2	Sq. Tube 1 1/2"x 1 1/2" x 3" LG
13	2	Shock Absorber Bracket #1/8" x 1 1/4" x 4 9/16" LG.



AVW EQUIPMENT CO., INC.
105 S. 9TH AVENUE
MAYWOOD, IL 60153
Tel: 708-343-7738 Fax: 708-343-9065
WWW.AVWEQUIPMENT.COM

- COMPANY PROPRIETARY NOTE -

THIS DRAWING AND ITS DESIGNS ARE PROPERTY OF AVW EQUIPMENT CO. & IT IS NOT TO BE USED OR REPRODUCED WITHOUT THE PERMISSION FROM AVW CO.

DRAWN BY

Tittu

CUSTOMER: AVW Equipment Co.

CHECKED BY

PROJECT: TR4 - Dual Arm Top Brush Hydraulic

QTY

DESCRIPTION: Top Brush Beam

RELEASE DATE

7/30/2021

PART NUMBER: TR1BA0513

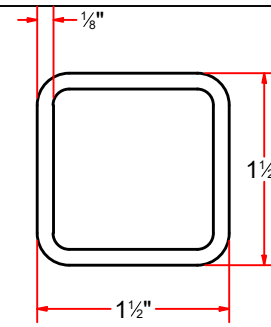
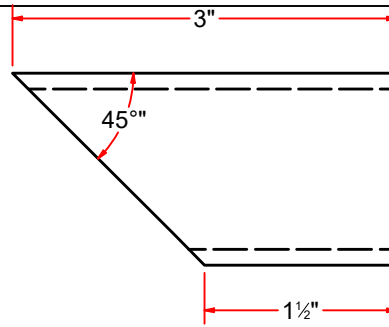
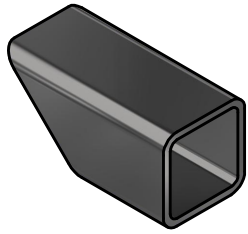
REV#

DIMENSION ARE IN INCHES & PROVIDED PRIOR TO SURFACE TREATMENTS, UNLESS NOTED.

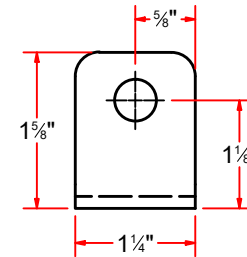
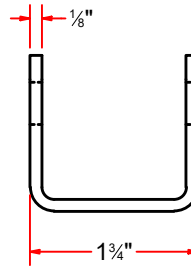
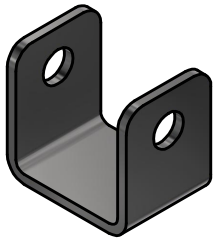
SIZE A

EST WEIGHT: 65 lbmass

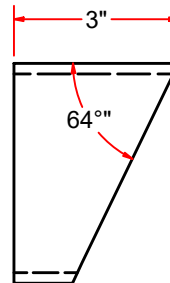
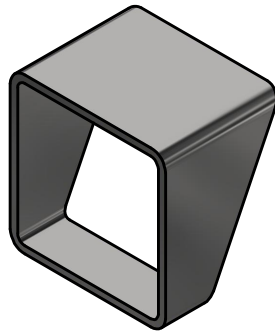
SHEET 8 of 42



Sq. Tube 1 1/2"x 1 1/2" x 3" LG



Shock Absorber Bracket #1/8" x 1 1/4" x 4 9/16" LG.



Sq. Tube 4"x 4" x 3" LG



AVW EQUIPMENT CO., INC.
105 S. 9TH AVENUE
MAYWOOD, IL 60153
Tel: 708-343-7738 Fax: 708-343-9065
WWW.AVWEQUIPMENT.COM

- COMPANY PROPRIETARY NOTE -

THIS DRAWING AND ITS DESIGNS ARE PROPERTY OF AVW EQUIPMENT CO. & IT IS NOT TO BE USED OR REPRODUCED WITHOUT THE PERMISSION FROM AVW CO.

DRAWN BY

Tittu

CUSTOMER: AVW Equipment Co.

CHECKED BY

PROJECT: TR4 - Dual Arm Top Brush Hydraulic

QTY

DESCRIPTION: Sq. Tube 1 1/2"x 1 1/2" x 3" LG

RELEASE DATE

7/30/2021

PART NUMBER: TR1BADB0513

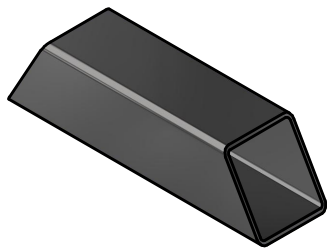
REV#

DIMENSION ARE IN INCHES & PROVIDED PRIOR TO SURFACE TREATMENTS, UNLESS NOTED.

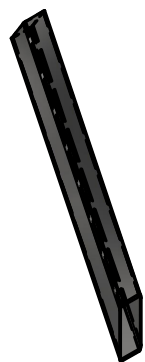
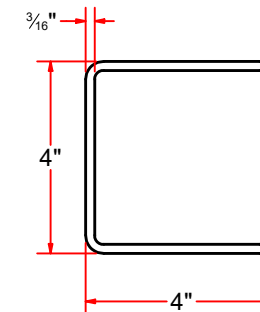
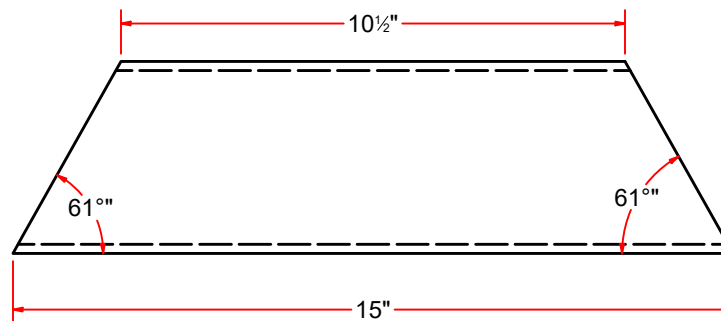
SIZE
A

EST WEIGHT:

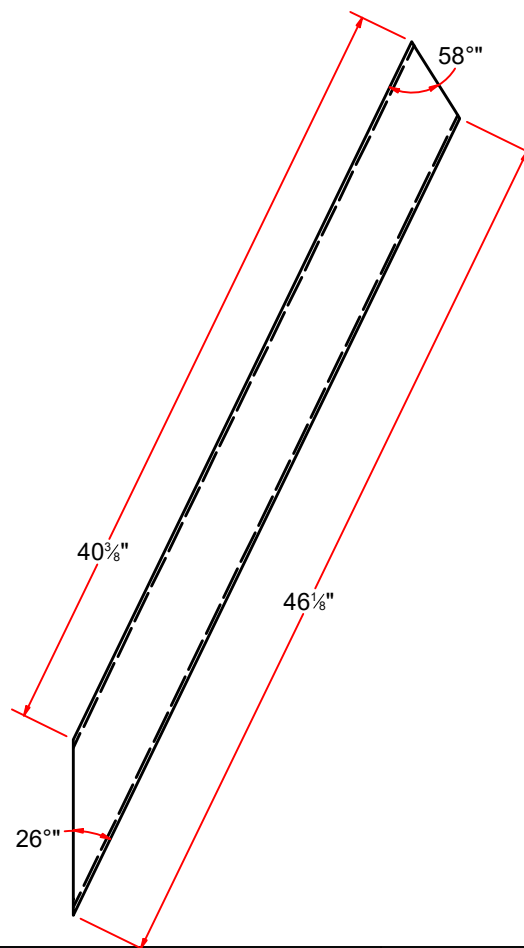
SHEET 10 of 42



Sq. Tube 4" x 4" x 15" LG



Sq. Tube 4" x 4" x 49" LG



AVW EQUIPMENT CO., INC.
105 S. 9TH AVENUE
MAYWOOD, IL 60153
Tel: 708-343-7738 Fax: 708-343-9065
WWW.AVWEQUIPMENT.COM

- COMPANY PROPRIETARY NOTE -

THIS DRAWING AND ITS DESIGNS ARE PROPERTY OF AVW EQUIPMENT CO. & IT IS NOT TO BE USED OR REPRODUCED WITHOUT THE PERMISSION FROM AVW CO.

DRAWN BY

Tittu

CUSTOMER: AVW Equipment Co.

CHECKED BY

PROJECT: TR4 - Dual Arm Top Brush Hydraulic

QTY

DESCRIPTION: Sq. Tube 4" x 4" x 15" LG

RELEASE DATE

7/30/2021

PART NUMBER: TR1BAA0513

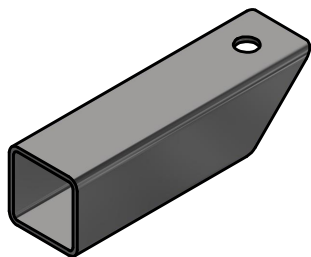
REV#

DIMENSION ARE IN INCHES & PROVIDED PRIOR TO SURFACE TREATMENTS, UNLESS NOTED.

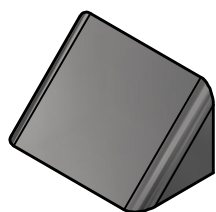
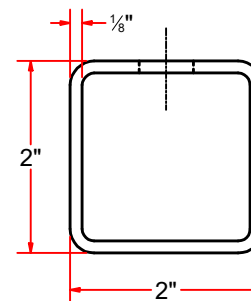
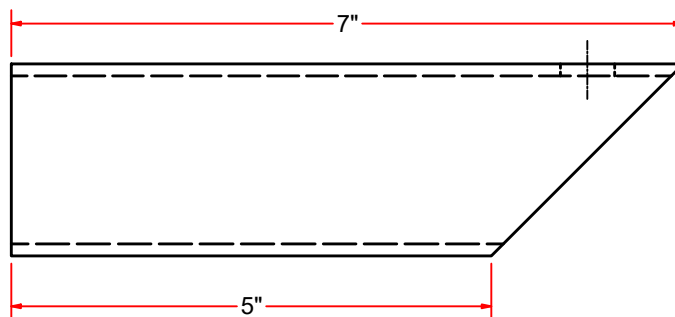
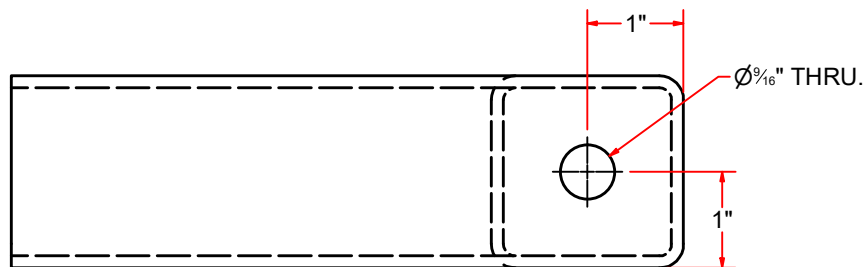
SIZE
A

EST WEIGHT:

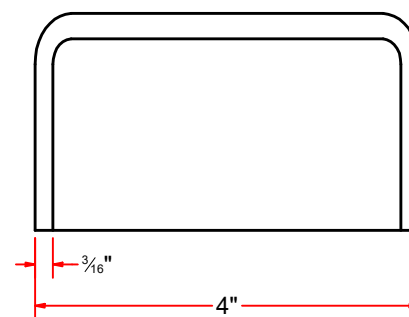
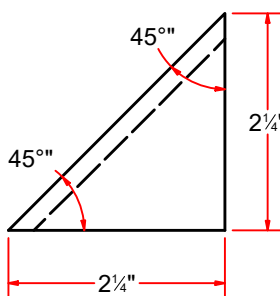
SHEET 11 of 42



Sq. Tube 2"x 2" x 7" LG



Sq. Tube 4" x 4" x 3 3/16" LG



AVW EQUIPMENT CO., INC.
105 S. 9TH AVENUE
MAYWOOD, IL 60153
Tel: 708-343-7738 Fax: 708-343-9065
WWW.AVWEQUIPMENT.COM

- COMPANY PROPRIETARY NOTE -

THIS DRAWING AND ITS DESIGNS ARE PROPERTY OF AVW EQUIPMENT CO. & IT IS NOT TO BE USED OR REPRODUCED WITHOUT THE PERMISSION FROM AVW CO.

DRAWN BY

Tittu

CUSTOMER: AVW Equipment Co.

CHECKED BY

PROJECT: TR4 - Dual Arm Top Brush Hydraulic

QTY

DESCRIPTION: Sq. Tube 2"x 2" x 7" LG

RELEASE DATE

7/30/2021

PART NUMBER: TR1BAC0513

REV#

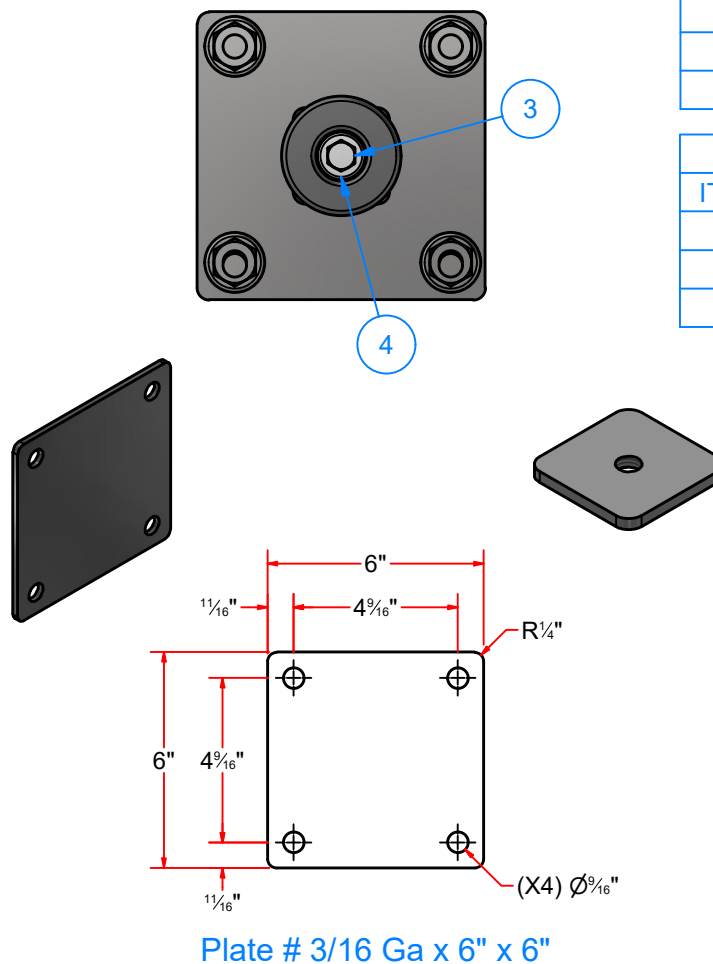
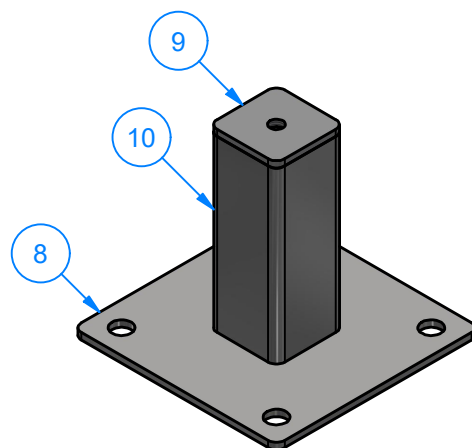
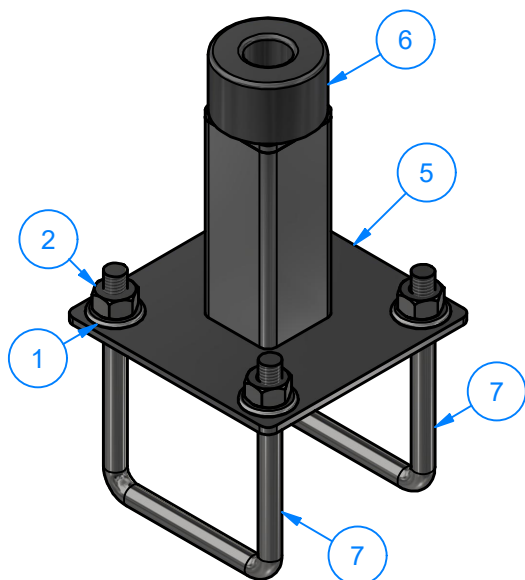
DIMENSION ARE IN INCHES & PROVIDED PRIOR TO SURFACE TREATMENTS, UNLESS NOTED.

SIZE
A

EST WEIGHT:

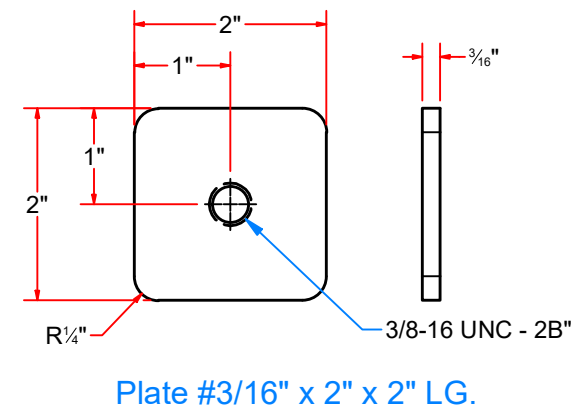
SHEET 12 of 42

TR1DB0304 - Top Brush Bumper Assembly



Parts List		
ITEM	QTY	DESCRIPTION
1	4	1/2" Flat Washer
2	4	1/2-13 Hex Nut
3	1	3/8" - 16 x 1" UNC Hex Screw
4	1	3/8" Flat Washer
5	1	Rubber Stop Weldment
6	1	Rubber Stop OD 2.5"
7	2	Square U Bolt D 1/2" x 4" x 6 1/4" LG

Parts List		
ITEM	QTY	DESCRIPTION
8	1	Plate # 3/16 Ga x 6" x 6"
9	1	Plate #3/16" x 2" x 2" LG.
10	1	Sq. Tube 2" x 2" x 5" LG



AVW EQUIPMENT CO., INC.
105 S. 9TH AVENUE
MAYWOOD, IL 60153
Tel: 708-343-7738 Fax: 708-343-9065
WWW.AVWEQUIPMENT.COM

- COMPANY PROPRIETARY NOTE -

THIS DRAWING AND ITS DESIGNS ARE PROPERTY OF AVW EQUIPMENT CO. & IT IS NOT TO BE USED OR REPRODUCED WITHOUT THE PERMISSION FROM AVW CO.

DRAWN BY

Tittu

CUSTOMER: AVW Equipment Co.

CHECKED BY

PROJECT: TR4 - Dual Arm Top Brush Hydraulic

QTY

DESCRIPTION: Top Brush Bumper Assembly

RELEASE DATE

7/30/2021

PART NUMBER: TR1DB0304

REV#

DIMENSION ARE IN INCHES & PROVIDED PRIOR TO SURFACE TREATMENTS, UNLESS NOTED.

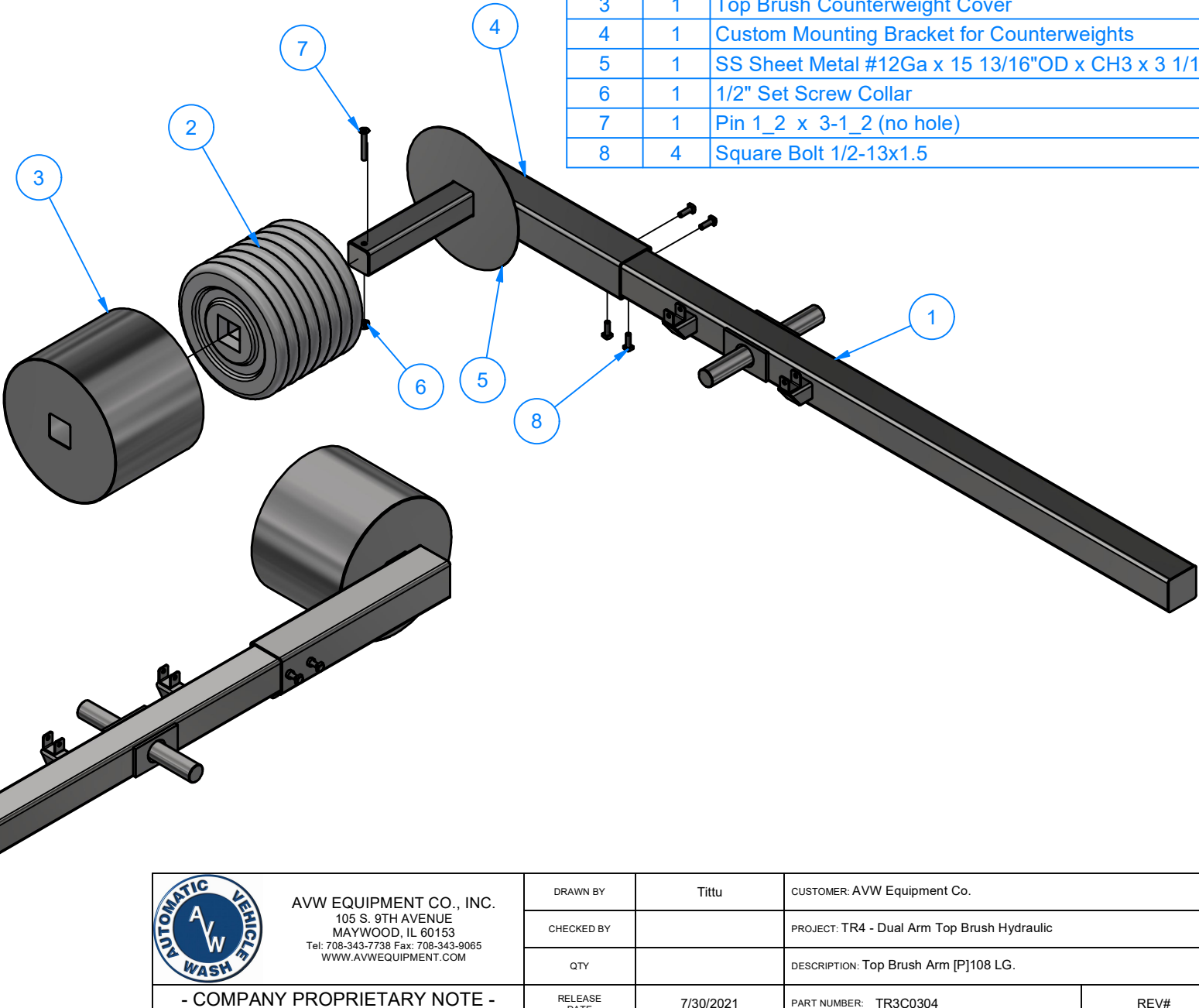
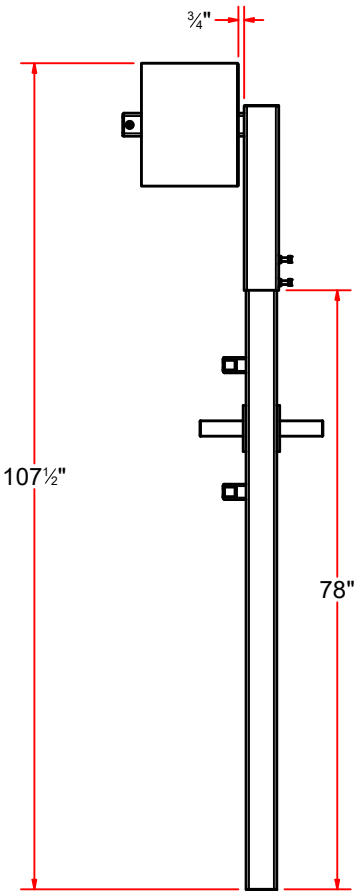
SIZE A

EST WEIGHT: 6 lbmass

SHEET 13 of 42

PATH:L:\Libraries\Productivity\Top Brush\Rubber Stop with parts\Rubber Stop With Parts.iam

TR3C0304 - Top Brush Arm [P]108 LG.



Parts List		
ITEM	QTY	DESCRIPTION
1	1	Top Brush Arm 108" LG. - LFT.
2	8	Counterweight 25 lb
3	1	Top Brush Counterweight Cover
4	1	Custom Mounting Bracket for Counterweights
5	1	SS Sheet Metal #12Ga x 15 13/16"OD x CH3 x 3 1/16"
6	1	1/2" Set Screw Collar
7	1	Pin 1_2 x 3-1_2 (no hole)
8	4	Square Bolt 1/2-13x1.5

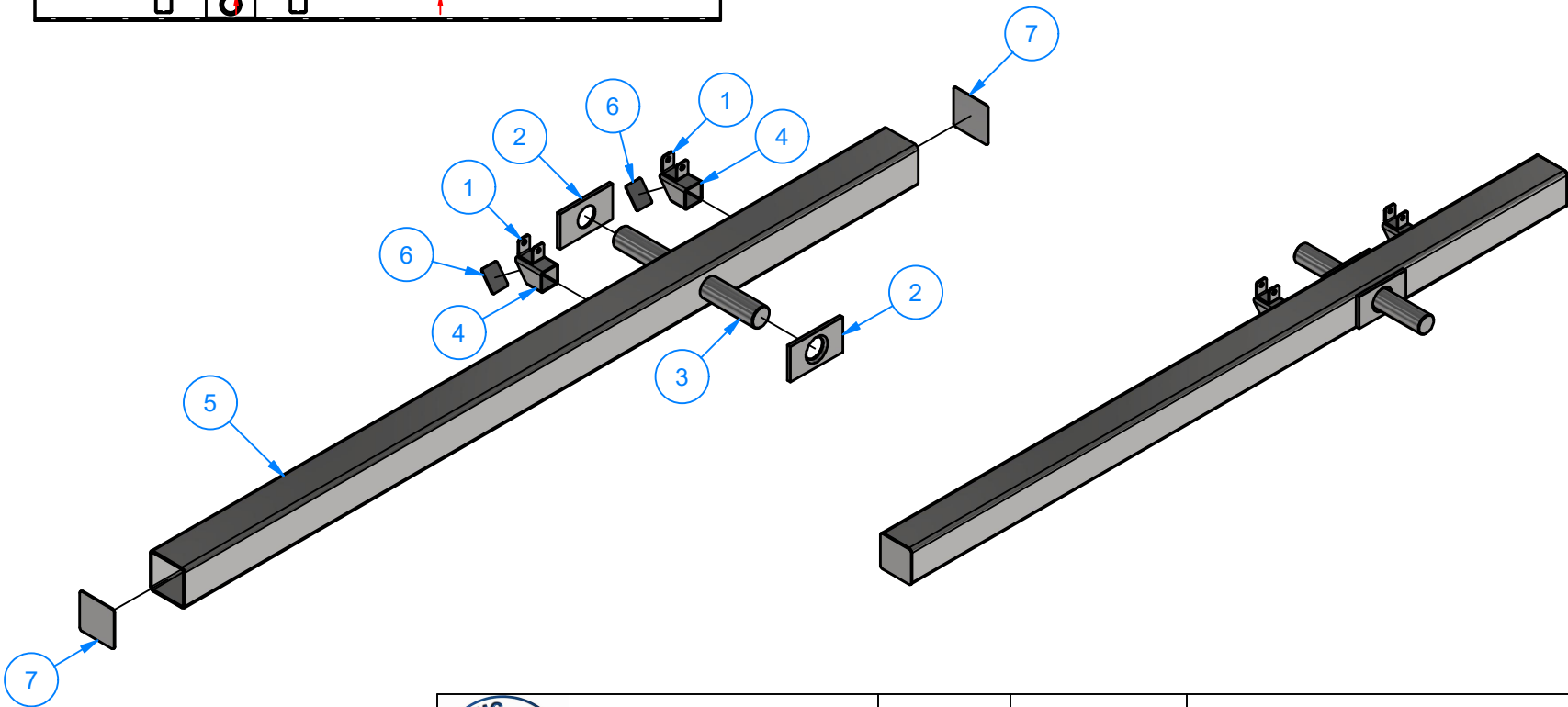
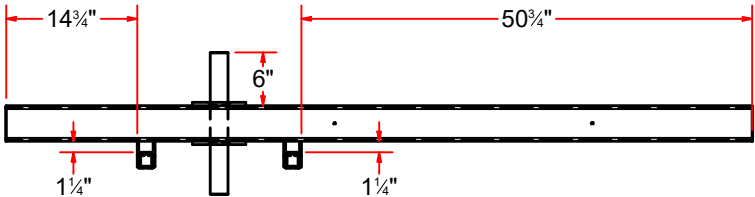


AVW EQUIPMENT CO., INC.
105 S. 9TH AVENUE
MAYWOOD, IL 60153
Tel: 708-343-7738 Fax: 708-343-9065
WWW.AVWEQUIPMENT.COM

- COMPANY PROPRIETARY NOTE -
THIS DRAWING AND ITS DESIGNS ARE PROPERTY OF AVW EQUIPMENT CO. &
IT IS NOT TO BE USED OR REPRODUCED WITHOUT THE PERMISSION FROM AVW CO.

DRAWN BY	Tittu	CUSTOMER: AVW Equipment Co.	
CHECKED BY		PROJECT: TR4 - Dual Arm Top Brush Hydraulic	
QTY		DESCRIPTION: Top Brush Arm [P]108 LG.	
RELEASE DATE	7/30/2021	PART NUMBER: TR3C0304	REV#
DIMENSION ARE IN INCHES & PROVIDED PRIOR TO SURFACE TREATMENTS, UNLESS NOTED.		SIZE A	EST WEIGHT: 544 lbmass
			SHEET 14 of 42

R-TR3AAA - TOP BRUSH ARM 108" LG. - LFT.



Parts List		
ITEM	QTY	DESCRIPTION
1	2	Shock Absorber Bracket #1/8" x 1 1/4" x 4 9/16" LG.
2	2	Plate #3/8" x 3 1/2" x 6" LG.
3	1	Rod 2" OD x 16" LG.
4	2	Sq. Tube #11Ga.(1/8") x 2"x 2" x 3" LG.
5	1	Sq. Tube 4" x 4" x 84" LG
6	2	SS Sheet Metal #12Ga x 1 3/4" x 2 1/4" LG.
7	2	Sq. SS Plate 14Ga x 3 15/16

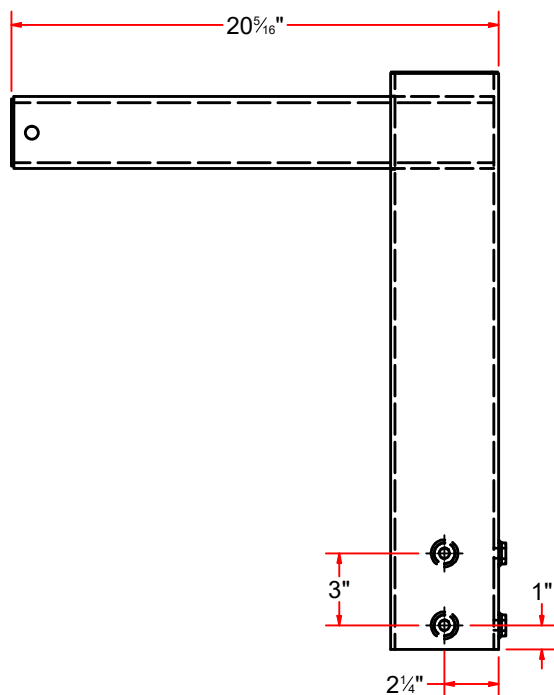


AVW EQUIPMENT CO., INC.
105 S. 9TH AVENUE
MAYWOOD, IL 60153
Tel: 708-343-7738 Fax: 708-343-9065
WWW.AVWEQUIPMENT.COM

- COMPANY PROPRIETARY NOTE -
THIS DRAWING AND ITS DESIGNS ARE PROPERTY OF AVW EQUIPMENT CO. &
IT IS NOT TO BE USED OR REPRODUCED WITHOUT THE PERMISSION FROM AVW CO.

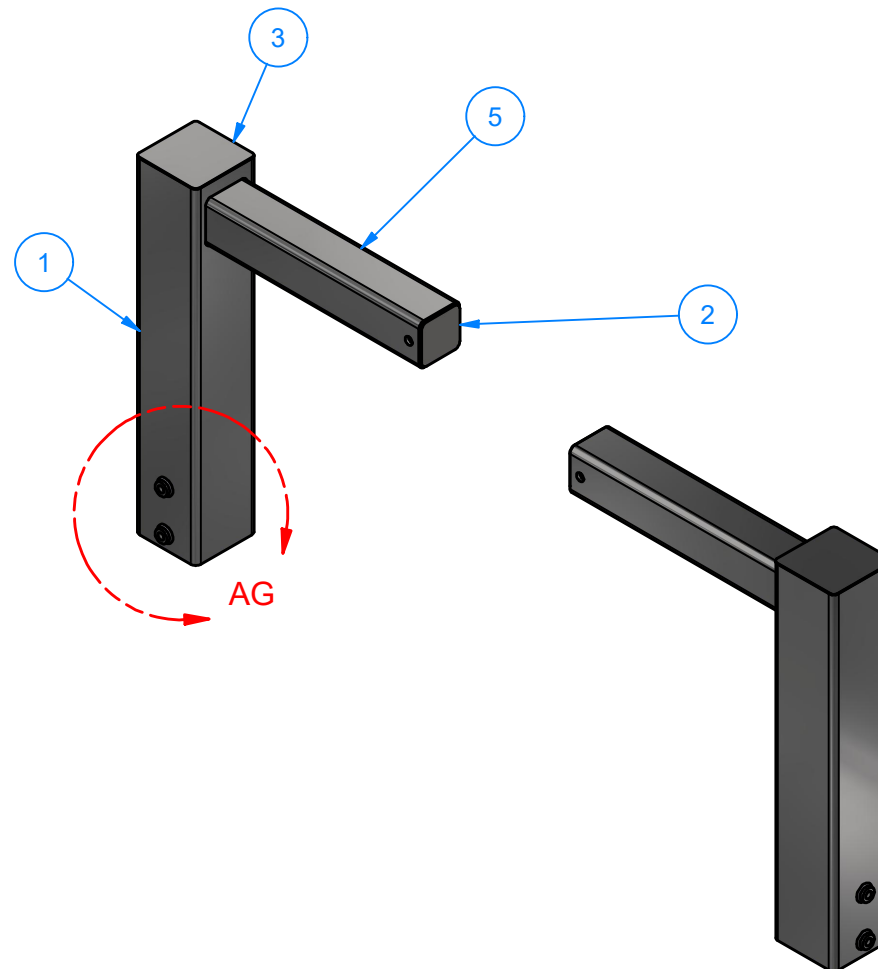
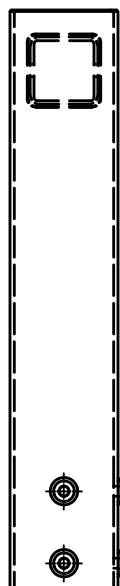
DRAWN BY	Tittu	CUSTOMER: AVW Equipment Co.	
CHECKED BY		PROJECT: TR4 - Dual Arm Top Brush Hydraulic	
QTY		DESCRIPTION: TOP BRUSH ARM 108" LG. - LFT.	
RELEASE DATE	7/30/2021	PART NUMBER: R-TR3AAA	REV#
DIMENSION ARE IN INCHES & PROVIDED PRIOR TO SURFACE TREATMENTS, UNLESS NOTED.		SIZE A	EST WEIGHT: 29 lbmass
			SHEET 15 of 42

TR1D - Custom Mounting Bracket for Counterweights



4

DETAIL AG



Parts List		
ITEM	QTY	DESCRIPTION
1	1	Sq. Tube x 4 1/2" x 4 1/2" x 24" LG.
2	1	Sheet Metal #12Ga x 2 13/16" x 2 13/16"
3	1	Sheet Metal #18Ga. x 4 1/2" x 4 1/2"
4	4	Sleeve Nut 1/2"
5	1	Sq. Tube #1/4" x 3" x 3" x 20" LG.



AVW EQUIPMENT CO., INC.
105 S. 9TH AVENUE
MAYWOOD, IL 60153
Tel: 708-343-7738 Fax: 708-343-9065
WWW.AVWEQUIPMENT.COM

- COMPANY PROPRIETARY NOTE -

THIS DRAWING AND ITS DESIGNS ARE PROPERTY OF AVW EQUIPMENT CO. & IT IS NOT TO BE USED OR REPRODUCED WITHOUT THE PERMISSION FROM AVW CO.

DRAWN BY

Tittu

CUSTOMER: AVW Equipment Co.

CHECKED BY

PROJECT: TR4 - Dual Arm Top Brush Hydraulic

QTY

DESCRIPTION: Custom Mounting Bracket for Counterweights

RELEASE DATE

7/30/2021

PART NUMBER: TR1D

REV#

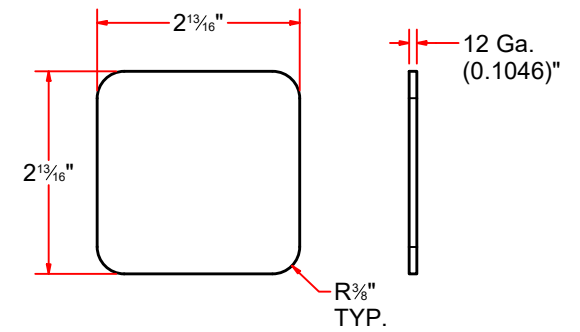
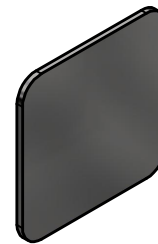
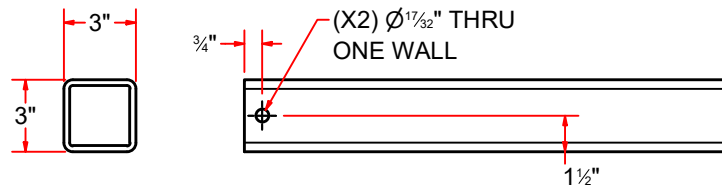
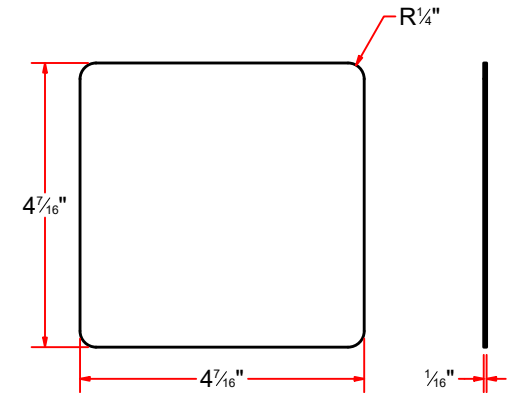
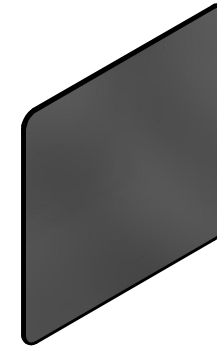
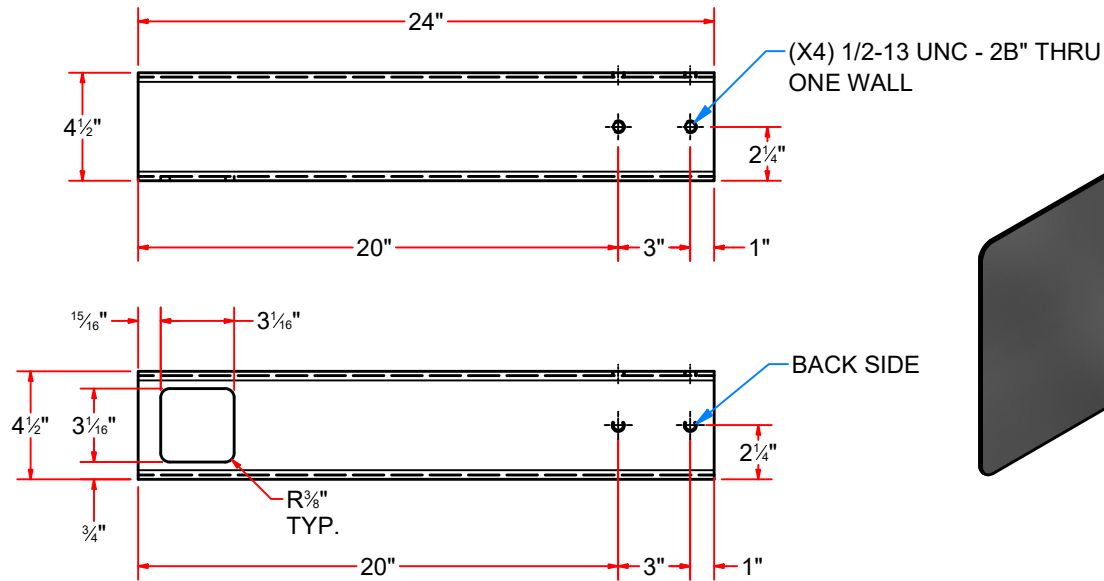
DIMENSION ARE IN INCHES & PROVIDED PRIOR TO SURFACE TREATMENTS, UNLESS NOTED.

SIZE A

EST WEIGHT:

SHEET 16 of 42

PATH:L:\Libraries\Productivity\Top Brush\Top Brush Arm Assy\Custom Mounting Bracket for Counterweights TR1D-1-1_2-3328.iam



AVW EQUIPMENT CO., INC.
105 S. 9TH AVENUE
MAYWOOD, IL 60153
Tel: 708-343-7738 Fax: 708-343-9065
WWW.AVWEQUIPMENT.COM

- COMPANY PROPRIETARY NOTE -

THIS DRAWING AND ITS DESIGNS ARE PROPERTY OF AVW EQUIPMENT CO. & IT IS NOT TO BE USED OR REPRODUCED WITHOUT THE PERMISSION FROM AVW CO.

DRAWN BY

Tittu

CUSTOMER: AVW Equipment Co.

CHECKED BY

PROJECT: TR4 - Dual Arm Top Brush Hydraulic

QTY

DESCRIPTION: Sq. Tube x 4 1/2" x 4 1/2" x 24" LG.

RELEASE DATE

7/30/2021

PART NUMBER: TR1EA

REV#

DIMENSION ARE IN INCHES & PROVIDED PRIOR TO SURFACE TREATMENTS, UNLESS NOTED.

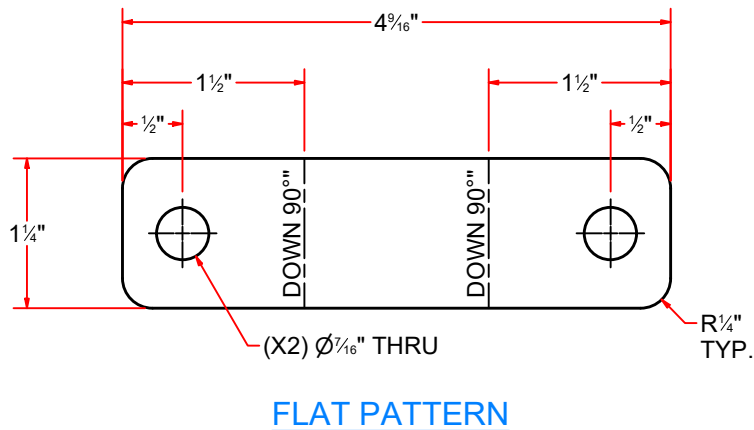
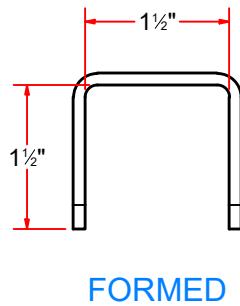
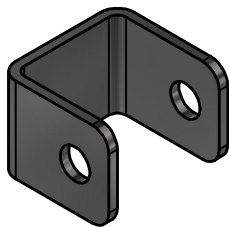
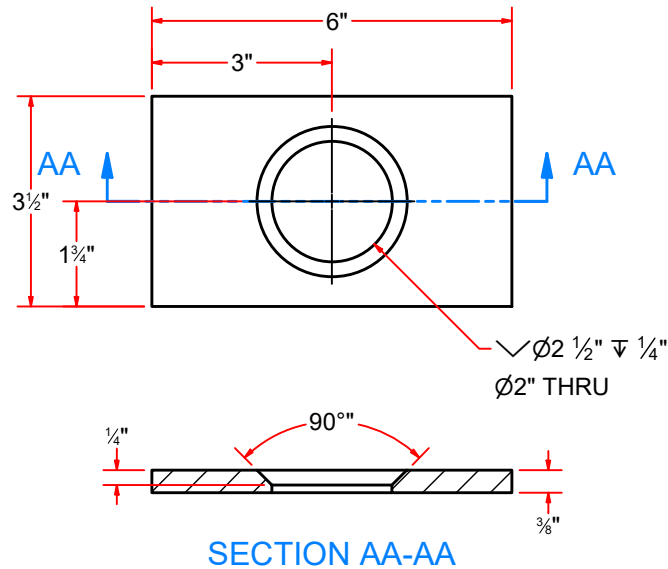
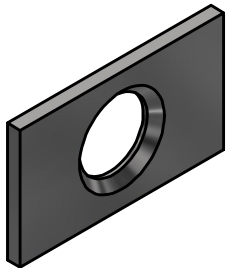
SIZE A


EST WEIGHT:

SHEET 17 of 42

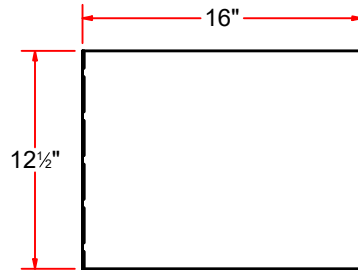
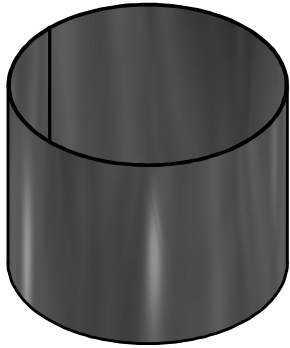
PATH:L:\Libraries\Productivity\Top Brush\Top Brush Arm Assy\Parts\TBCH0011.ipt

TOP BRUSH ARM - Parts

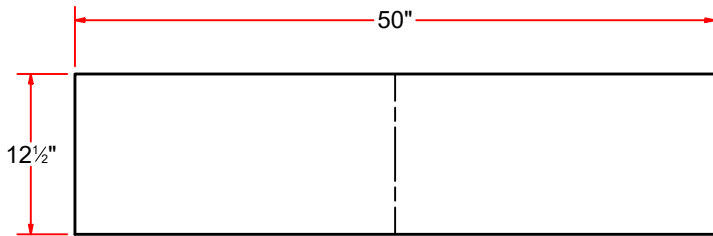


	AVW EQUIPMENT CO., INC. 105 S. 9TH AVENUE MAYWOOD, IL 60153 Tel: 708-343-7738 Fax: 708-343-9065 WWW.AVWEQUIPMENT.COM		DRAWN BY	Tittu	CUSTOMER: AVW Equipment Co.		
			CHECKED BY		PROJECT: TR4 - Dual Arm Top Brush Hydraulic		
			QTY		DESCRIPTION: Plate #3/8" x 3 1/2" x 6" LG.		
	- COMPANY PROPRIETARY NOTE - THIS DRAWING AND ITS DESIGNS ARE PROPERTY OF AVW EQUIPMENT CO. & IT IS NOT TO BE USED OR REPRODUCED WITHOUT THE PERMISSION FROM AVW CO.		RELEASE DATE	7/30/2021	PART NUMBER: TR1CAA0304		REV#
DIMENSION ARE IN INCHES & PROVIDED PRIOR TO SURFACE TREATMENTS, UNLESS NOTED.			SIZE A	EST WEIGHT:	SHEET 18 of 42		
PATH:L:\Libraries\AVW Components\Plates\Top Brush Plates\TBA002.ipt							

TR1FH - Top Brush Counterweight Cover

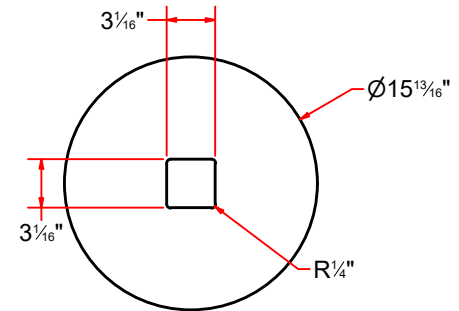
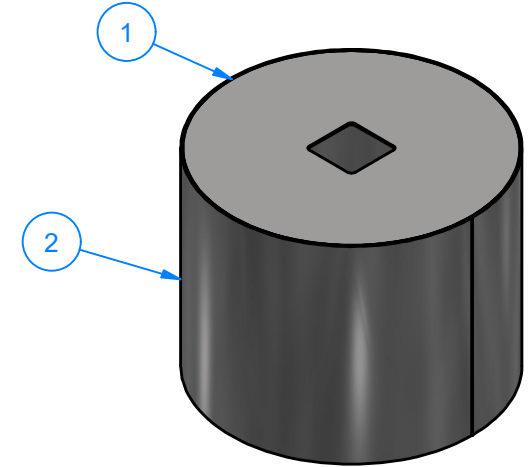


FORMED



FLAT PATTERN

SS Sheet Metal #14Ga x 12 1/2" x 50" LG.



SS Sheet Metal #12Ga x 15 13/16"OD x CH3 x 3 1/16"

Parts List		
ITEM	QTY	DESCRIPTION
1	1	SS Sheet Metal #12Ga x 15 13/16"OD x CH3 x 3 1/16"
2	1	SS Sheet Metal #14Ga x 12 1/2" x 50" LG.



AVW EQUIPMENT CO., INC.
105 S. 9TH AVENUE
MAYWOOD, IL 60153
Tel: 708-343-7738 Fax: 708-343-9065
WWW.AVWEQUIPMENT.COM

- COMPANY PROPRIETARY NOTE -

THIS DRAWING AND ITS DESIGNS ARE PROPERTY OF AVW EQUIPMENT CO. & IT IS NOT TO BE USED OR REPRODUCED WITHOUT THE PERMISSION FROM AVW CO.

DRAWN BY

Tittu

CUSTOMER: AVW Equipment Co.

CHECKED BY

PROJECT: TR4 - Dual Arm Top Brush Hydraulic

QTY

DESCRIPTION: Top Brush Counterweight Cover

RELEASE DATE

7/30/2021

PART NUMBER: TR1FH

REV#

DIMENSION ARE IN INCHES & PROVIDED PRIOR TO SURFACE TREATMENTS, UNLESS NOTED.

SIZE A

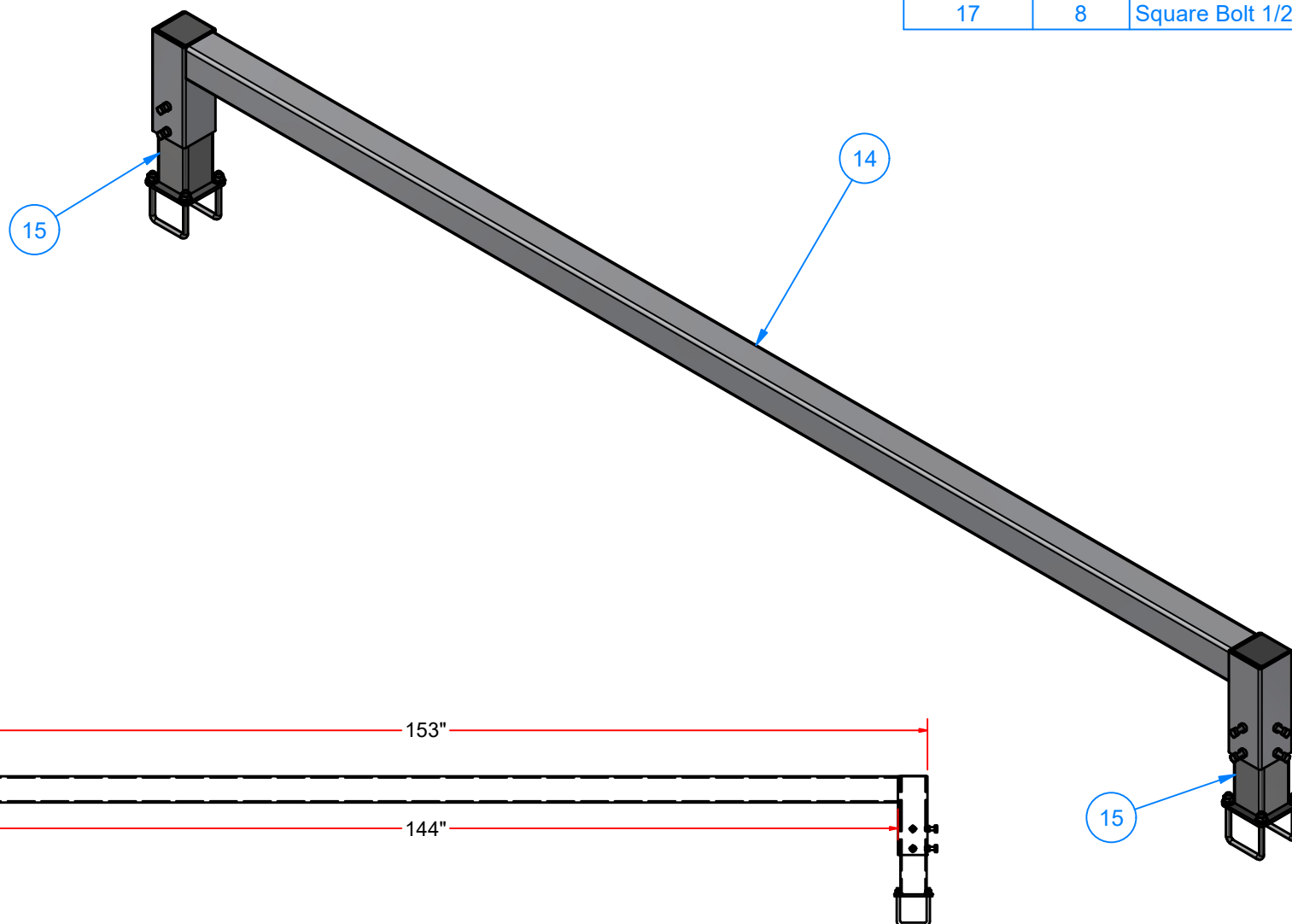
EST WEIGHT: 19 lbmass

SHEET 19 of 42

PATH:L:\Libraries\AVW Components\Counterweight\Counter Weight Cover\Counter Weight Cover.iam

TR4C - Dual Arm Top Brush Crossbar

Parts List		
ITEM	QTY	DESCRIPTION
14	1	Dual Arm Top Brush Crossbar
15	2	Crossbar leg assembly
17	8	Square Bolt 1/2-13x1.5



AVW EQUIPMENT CO., INC.
105 S. 9TH AVENUE
MAYWOOD, IL 60153
Tel: 708-343-7738 Fax: 708-343-9065
WWW.AVWEQUIPMENT.COM

- COMPANY PROPRIETARY NOTE -

THIS DRAWING AND ITS DESIGNS ARE PROPERTY OF AVW EQUIPMENT CO. & IT IS NOT TO BE USED OR REPRODUCED WITHOUT THE PERMISSION FROM AVW CO.

DRAWN BY

Tittu

CUSTOMER: AVW Equipment Co.

CHECKED BY

PROJECT: TR4 - Dual Arm Top Brush Hydraulic

QTY

DESCRIPTION: Dual Arm Top Brush Crossbar

RELEASE DATE

7/30/2021

PART NUMBER: TR4C

REV#

DIMENSION ARE IN INCHES & PROVIDED PRIOR TO SURFACE TREATMENTS, UNLESS NOTED.

SIZE
A

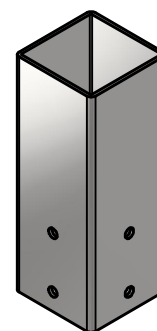
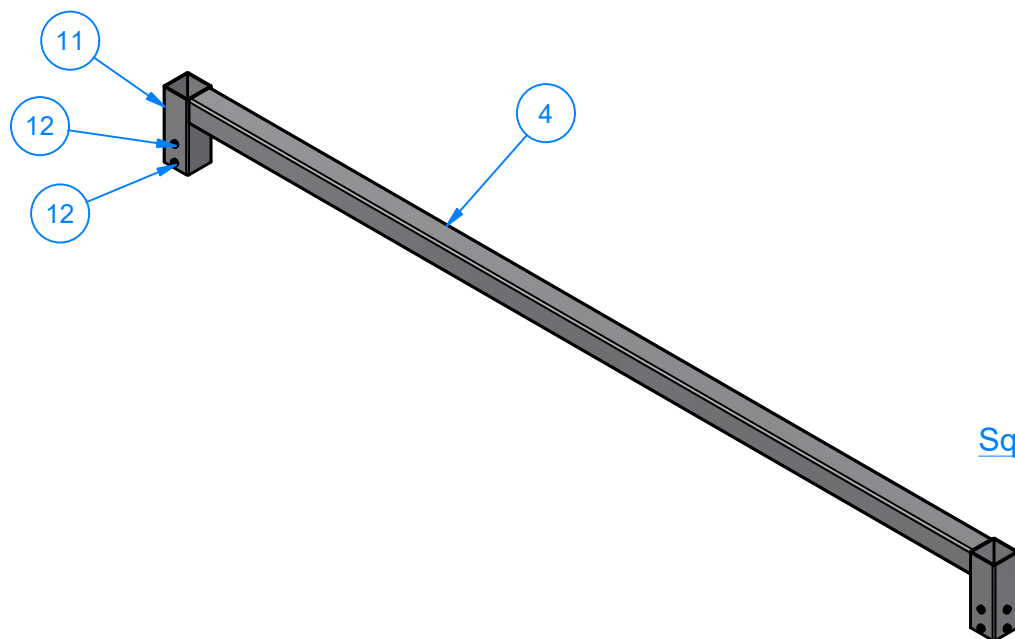
EST WEIGHT:

SHEET 20 of 42

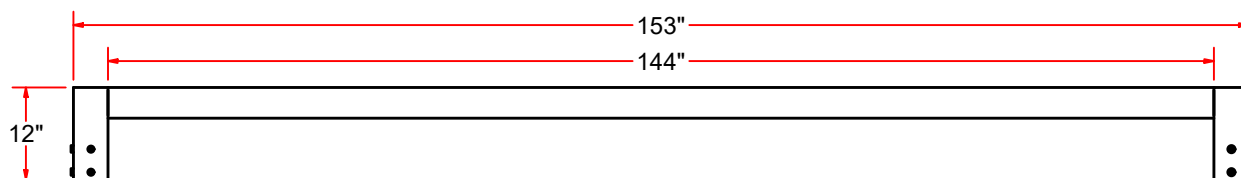
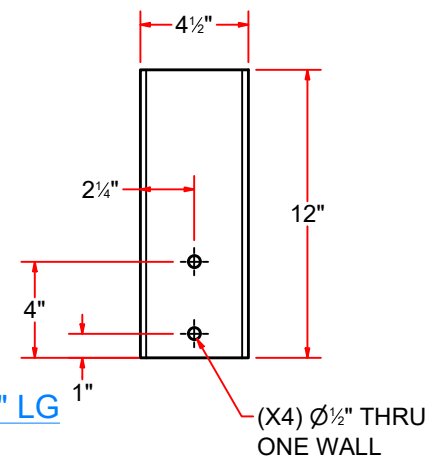
PATH:L:\Libraries\Productivity\Top Brush\Top Brush Crossbar Assy\Dual Arm TB - Top Crossbar Assembly.iam

TR4CA - Dual Arm Top Brush Crossbar

Parts List		
ITEM	QTY	DESCRIPTION
4	1	Sq. Tube #7Ga. 4" x 4" x 144" L.G.
11	2	Sq.Tubing [7 Ga.] 4 1/2" x 12" LG
12	8	Sleeve Nut 1/2"



Sq.Tubing [7 Ga.] 4 1/2" x 12" LG



AVW EQUIPMENT CO., INC.
105 S. 9TH AVENUE
MAYWOOD, IL 60153
Tel: 708-343-7738 Fax: 708-343-9065
WWW.AVWEQUIPMENT.COM

- COMPANY PROPRIETARY NOTE -

THIS DRAWING AND ITS DESIGNS ARE PROPERTY OF AVW EQUIPMENT CO. & IT IS NOT TO BE USED OR REPRODUCED WITHOUT THE PERMISSION FROM AVW CO.

DRAWN BY

Tittu

CUSTOMER: AVW Equipment Co.

CHECKED BY

PROJECT: TR4 - Dual Arm Top Brush Hydraulic

QTY

DESCRIPTION: Dual Arm Top Brush Crossbar

RELEASE DATE

7/30/2021

PART NUMBER: TR4CA

REV#

DIMENSION ARE IN INCHES & PROVIDED PRIOR TO SURFACE TREATMENTS, UNLESS NOTED.

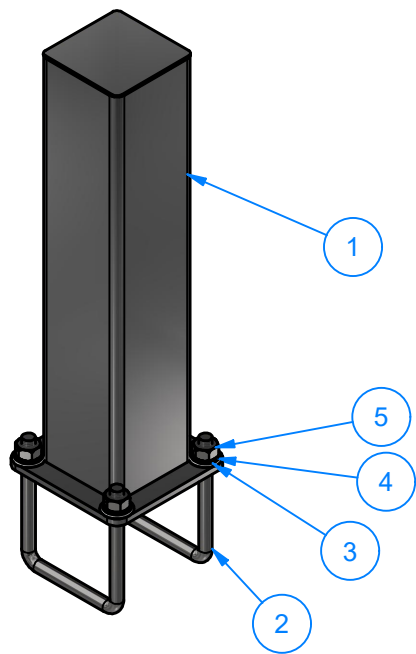
SIZE A

EST WEIGHT:

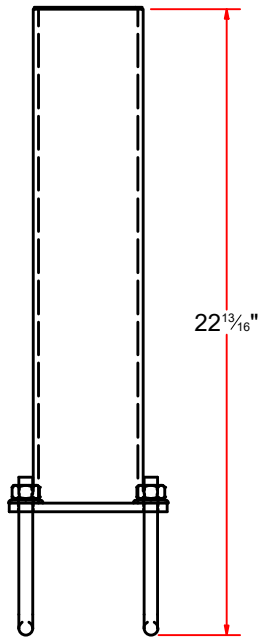
SHEET 21 of 42

PATH:L:\Libraries\Productivity\Top Brush\Top Brush Crossbar Assy\Parts\Top Crossbar Weldment.iam

TR4CB - Crossbar leg assembly



Parts List		
ITEM	QTY	DESCRIPTION
1	1	Crossbar leg Weldment
2	2	Square U Bolt D 1/2" x 4" x 6 1/4" LG
3	4	1/2" Flat Washer
4	4	1/2" Split Lock Washer
5	4	1/2-13 Hex Nut

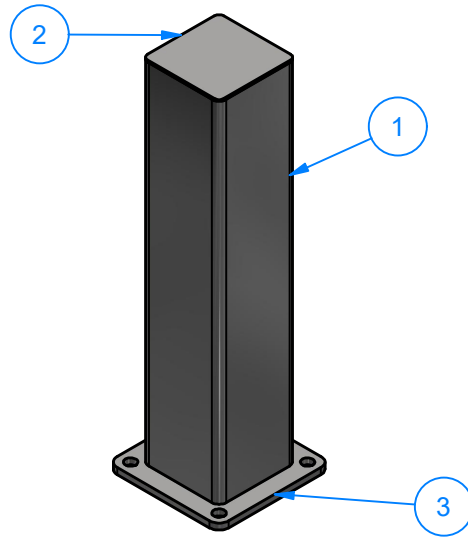


AVW EQUIPMENT CO., INC.
105 S. 9TH AVENUE
MAYWOOD, IL 60153
Tel: 708-343-7738 Fax: 708-343-9065
WWW.AVWEQUIPMENT.COM

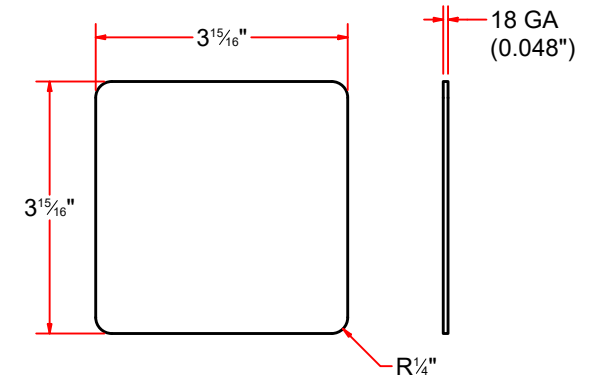
- COMPANY PROPRIETARY NOTE -
THIS DRAWING AND ITS DESIGNS ARE PROPERTY OF AVW EQUIPMENT CO. &
IT IS NOT TO BE USED OR REPRODUCED WITHOUT THE PERMISSION FROM AVW CO.

DRAWN BY	Tittu	CUSTOMER: AVW Equipment Co.	
CHECKED BY		PROJECT: TR4 - Dual Arm Top Brush Hydraulic	
QTY		DESCRIPTION: Crossbar leg assembly	
RELEASE DATE	7/30/2021	PART NUMBER: TR4CB	REV#
DIMENSION ARE IN INCHES & PROVIDED PRIOR TO SURFACE TREATMENTS, UNLESS NOTED.		SIZE A	EST WEIGHT: SHEET 22 of 42

TR4CBA - Crossbar leg Weldment



Parts List		
ITEM	QTY	DESCRIPTION
1	1	Sq. Tube #7Ga. 4" x 4" x 18" L.G.
2	1	Sq. SS Plate 14Ga x 3 15/16
3	1	SS Plate #5/16" x 5 3/4" x 5 3/4"



Sq. SS Plate 14Ga x 3 15/16

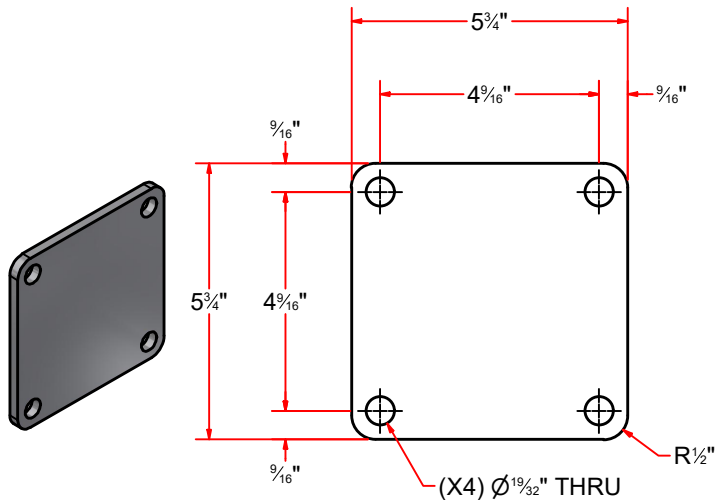
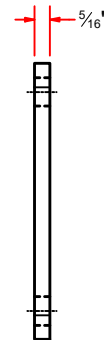


Plate #5/16" x 5 3/4" x 5 3/4"



AVW EQUIPMENT CO., INC.
105 S. 9TH AVENUE
MAYWOOD, IL 60153
Tel: 708-343-7738 Fax: 708-343-9065
WWW.AVWEQUIPMENT.COM

- COMPANY PROPRIETARY NOTE -
THIS DRAWING AND ITS DESIGNS ARE PROPERTY OF AVW EQUIPMENT CO. & IT IS NOT TO BE USED OR REPRODUCED WITHOUT THE PERMISSION FROM AVW CO.

DRAWN BY

Tittu

CUSTOMER: AVW Equipment Co.

CHECKED BY

PROJECT: TR4 - Dual Arm Top Brush Hydraulic

QTY

DESCRIPTION: Plate #5/16" x 5 3/4" x 5 3/4"

RELEASE DATE

7/30/2021

PART NUMBER: PLSS313X0575X0575X4H

REV#

DIMENSION ARE IN INCHES & PROVIDED PRIOR TO SURFACE TREATMENTS, UNLESS NOTED.

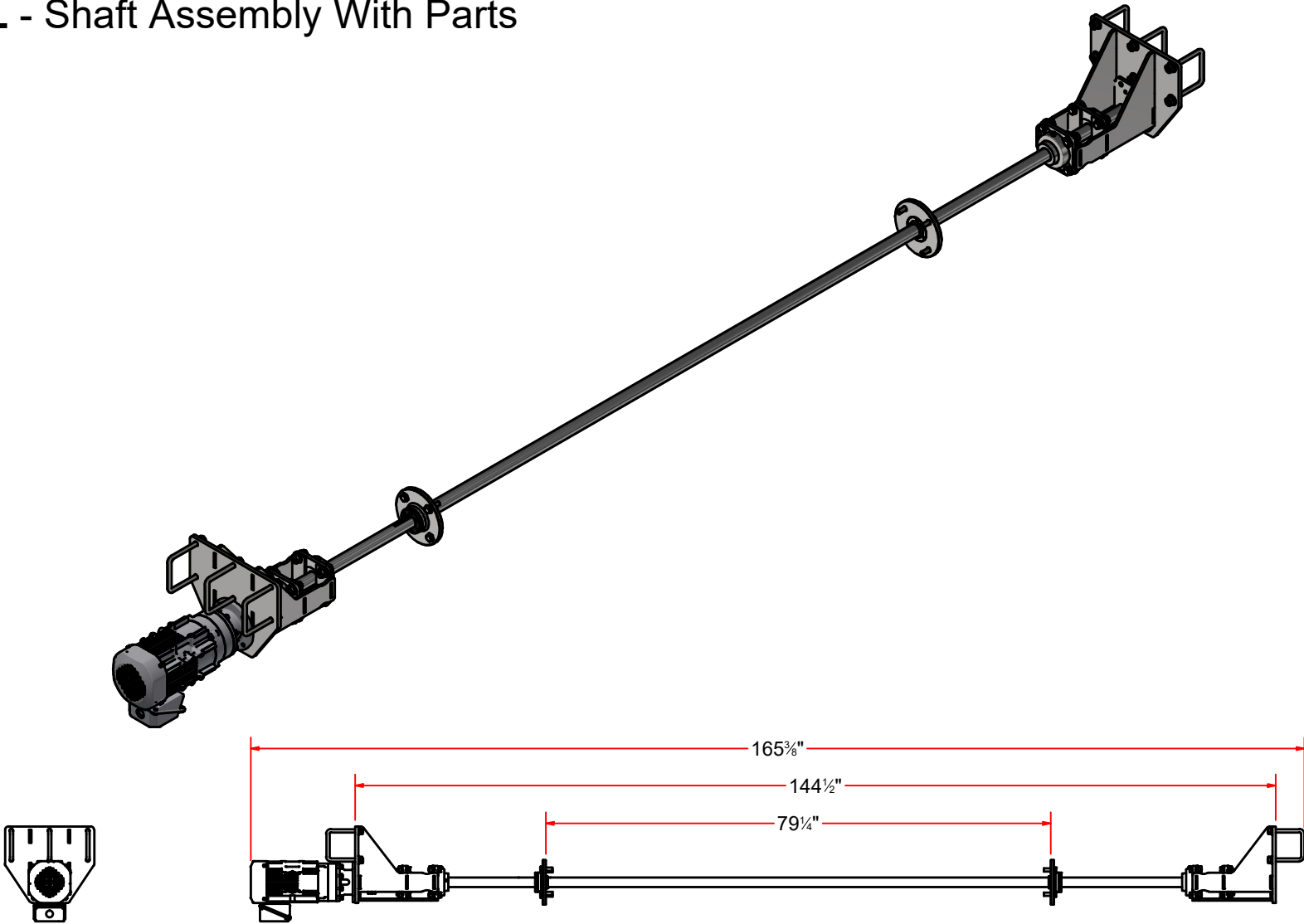
SIZE
A

EST WEIGHT:

SHEET 23 of 42

PATH:L:\Libraries\AVW Components\Plates\5-3_4 x 5-3_4) & ((H 9_16 x 4) !! (4-5_8 x 4-5_8)) - #5_16 DONE.ipt

TR4G-EL - Shaft Assembly With Parts



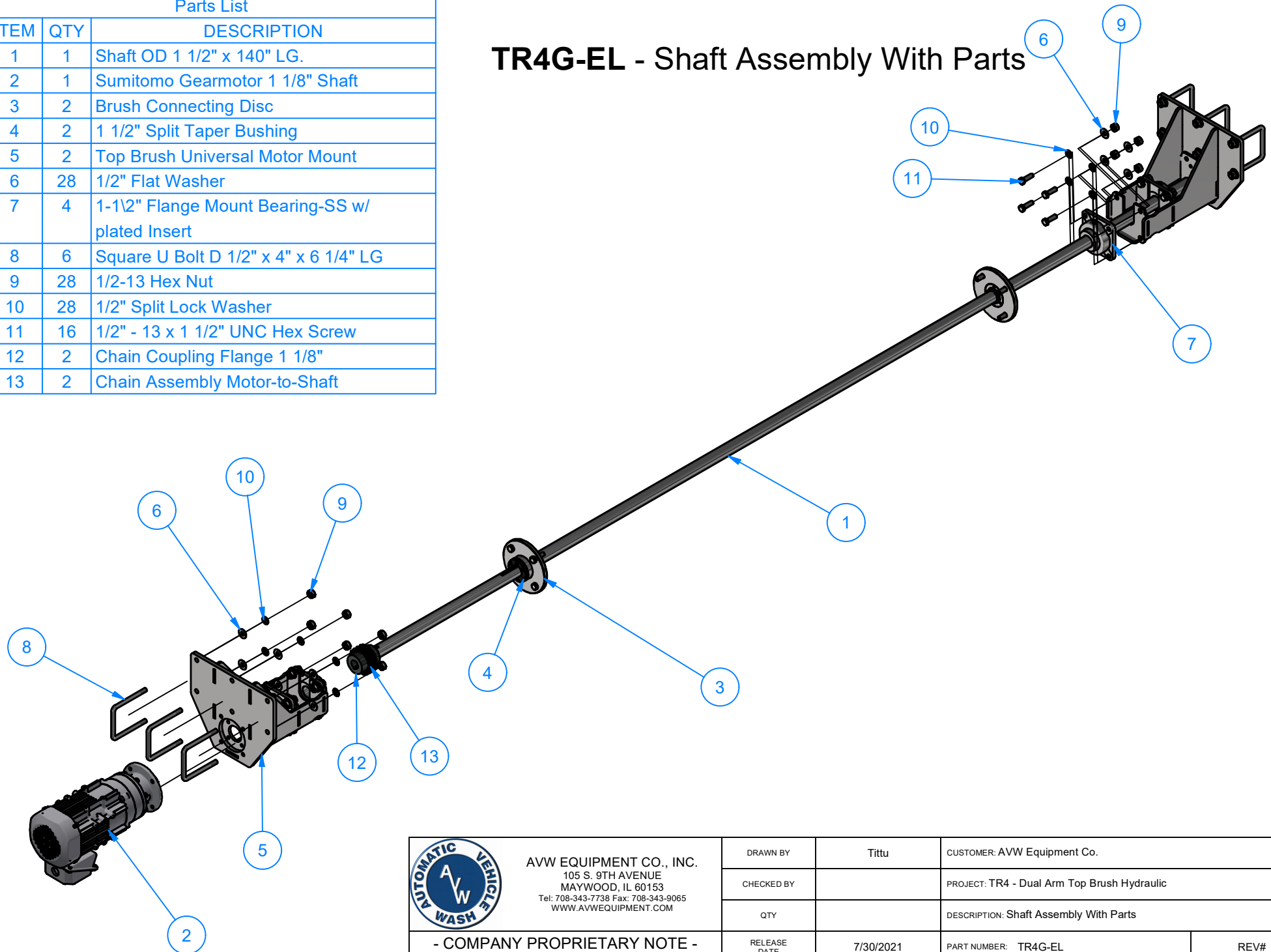
AVW EQUIPMENT CO., INC.
105 S. 9TH AVENUE
MAYWOOD, IL 60153
Tel: 708-343-7738 Fax: 708-343-9065
WWW.AVWEQUIPMENT.COM

- COMPANY PROPRIETARY NOTE -
THIS DRAWING AND ITS DESIGNS ARE PROPERTY OF AVW EQUIPMENT CO. &
IT IS NOT TO BE USED OR REPRODUCED WITHOUT THE PERMISSION FROM AVW CO.

DRAWN BY	Tittu	CUSTOMER: AVW Equipment Co.	
CHECKED BY		PROJECT: TR4 - Dual Arm Top Brush Hydraulic	
QTY		DESCRIPTION: Shaft Assembly With Parts	
RELEASE DATE	7/30/2021	PART NUMBER: TR4G-EL	REV#
DIMENSION ARE IN INCHES & PROVIDED PRIOR TO SURFACE TREATMENTS, UNLESS NOTED.		SIZE A	EST WEIGHT:
			SHEET 24 of 42

Parts List		
ITEM	QTY	DESCRIPTION
1	1	Shaft OD 1 1/2" x 140" LG.
2	1	Sumitomo Gearmotor 1 1/8" Shaft
3	2	Brush Connecting Disc
4	2	1 1/2" Split Taper Bushing
5	2	Top Brush Universal Motor Mount
6	28	1/2" Flat Washer
7	4	1-1/2" Flange Mount Bearing-SS w/ plated Insert
8	6	Square U Bolt D 1/2" x 4" x 6 1/4" LG
9	28	1/2-13 Hex Nut
10	28	1/2" Split Lock Washer
11	16	1/2" - 13 x 1 1/2" UNC Hex Screw
12	2	Chain Coupling Flange 1 1/8"
13	2	Chain Assembly Motor-to-Shaft

TR4G-EL - Shaft Assembly With Parts



AVW EQUIPMENT CO., INC.
105 S. 9TH AVENUE
MAYWOOD, IL 60153
Tel: 708-343-7738 Fax: 708-343-9065
WWW.AVWEQUIPMENT.COM

- COMPANY PROPRIETARY NOTE -

THIS DRAWING AND ITS DESIGNS ARE PROPERTY OF AVW EQUIPMENT CO. & IT IS NOT TO BE USED OR REPRODUCED WITHOUT THE PERMISSION FROM AVW CO.

DRAWN BY

Tittu

CUSTOMER: AVW Equipment Co.

CHECKED BY

PROJECT: TR4 - Dual Arm Top Brush Hydraulic

QTY

DESCRIPTION: Shaft Assembly With Parts

RELEASE DATE

7/30/2021

PART NUMBER: TR4G-EL

REV#

DIMENSION ARE IN INCHES & PROVIDED PRIOR TO SURFACE TREATMENTS, UNLESS NOTED.

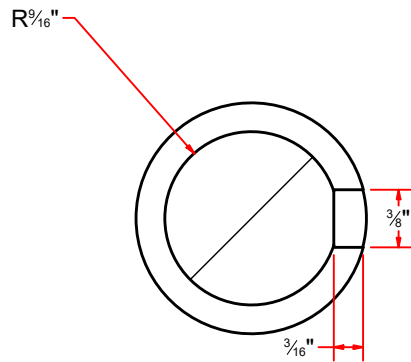
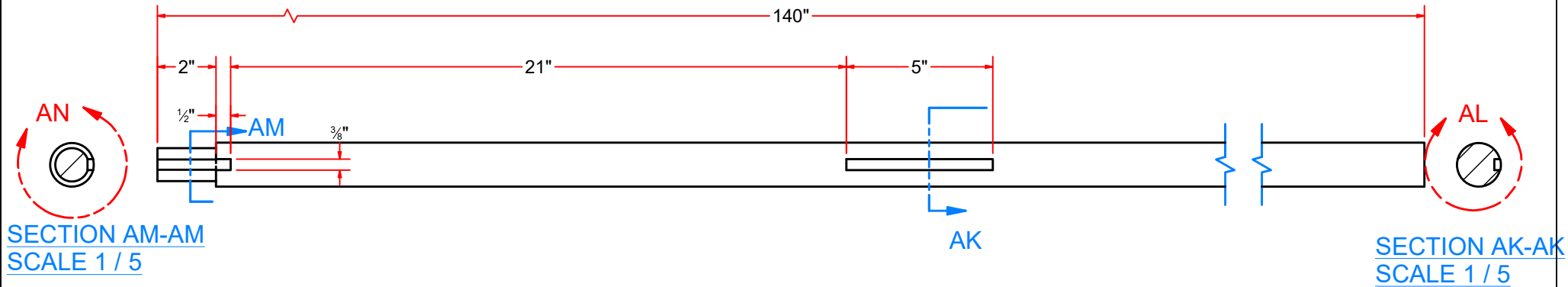
SIZE A

EST WEIGHT:

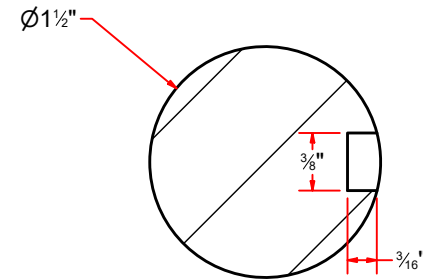
SHEET 25 of 42

PATH:L:\Designs\Product Lines\TB - Top Brush\TR4-EL - Dual Arm Top Brush Electric\Parts\TR4-EL - Driver Shaft Assembly Electric With Parts.iam

TR4GB-EL - Shaft OD 1 1/2" x 140" LG.



DETAIL AN



DETAIL AL



AVW EQUIPMENT CO., INC.
105 S. 9TH AVENUE
MAYWOOD, IL 60153
Tel: 708-343-7738 Fax: 708-343-9065
WWW.AVWEQUIPMENT.COM

- COMPANY PROPRIETARY NOTE -

THIS DRAWING AND ITS DESIGNS ARE PROPERTY OF AVW EQUIPMENT CO. & IT IS NOT TO BE USED OR REPRODUCED WITHOUT THE PERMISSION FROM AVW CO.

DRAWN BY

Tittu

CUSTOMER: AVW Equipment Co.

CHECKED BY

PROJECT: TR4 - Dual Arm Top Brush Hydraulic

QTY

DESCRIPTION: Shaft OD 1 1/2" x 140" LG.

RELEASE
DATE

7/30/2021

PART NUMBER: TR4GB-EL

REV#

DIMENSION ARE IN INCHES & PROVIDED PRIOR
TO SURFACE TREATMENTS, UNLESS NOTED.

SIZE
A

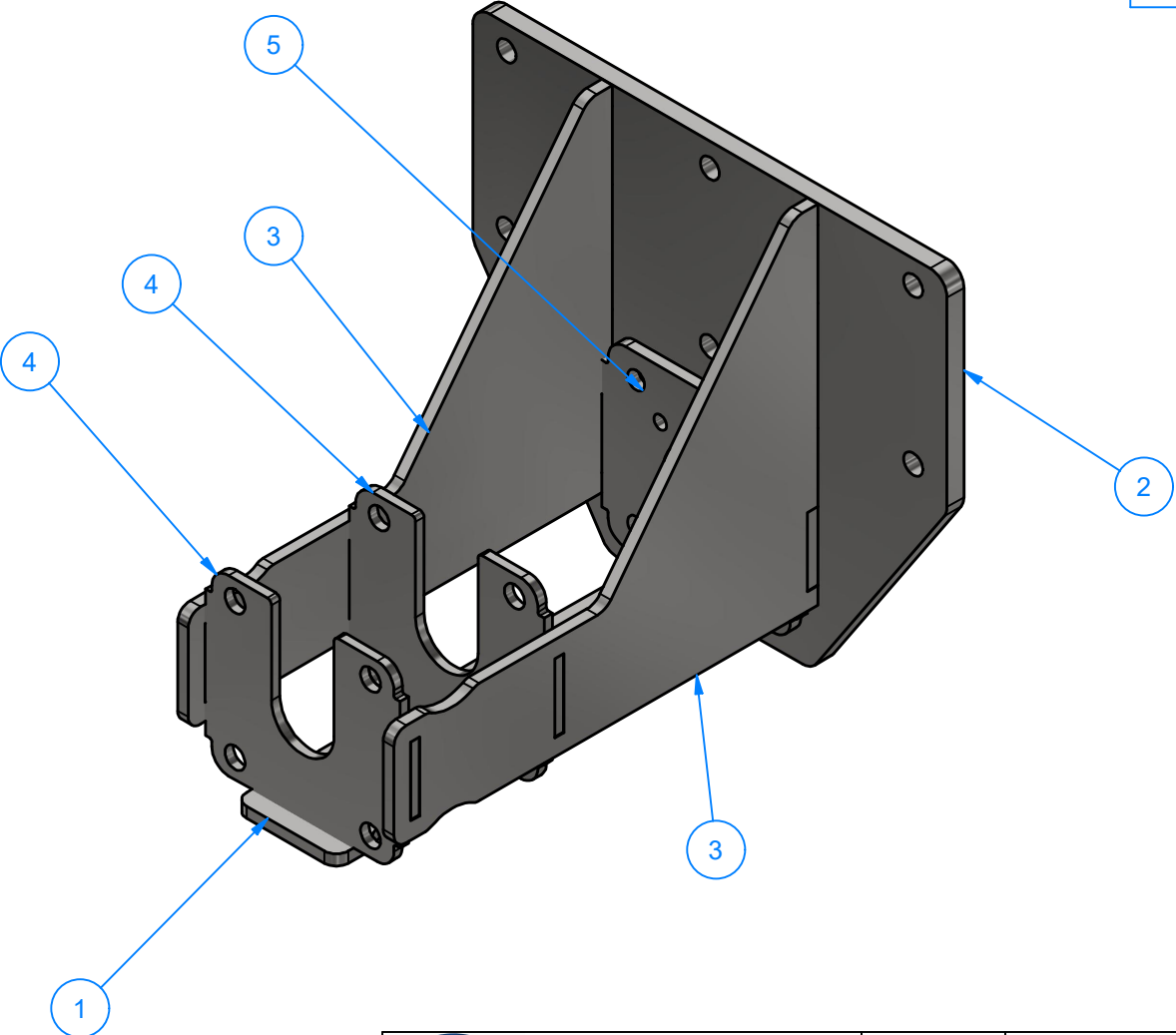
EST WEIGHT:

SHEET 26 of 42

PATH:L:\Designs\Product Lines\TB - Top Brush\TR4-EL - Dual Arm Top Brush Electric\Parts\Shaft TB-061.1.ipt

TR1GA-U - Top Brush Universal Motor Mount

Parts List		
ITEM	QTY	DESCRIPTION
1	1	SS Plate #5/16"x13"x3"
2	1	SS Plate #1/2"x14"x12"
3	2	SS Plate #5/16"x13"x10 1/4"
4	2	Plate #1/4"x5 1/8"x6 3/8"LG.
5	1	Plate #5/16"x5 1/8"x6 3/8"LG.



AVW EQUIPMENT CO., INC.
105 S. 9TH AVENUE
MAYWOOD, IL 60153
Tel: 708-343-7738 Fax: 708-343-9065
WWW.AVWEQUIPMENT.COM

- COMPANY PROPRIETARY NOTE -
THIS DRAWING AND ITS DESIGNS ARE PROPERTY OF AVW EQUIPMENT CO. &
IT IS NOT TO BE USED OR REPRODUCED WITHOUT THE PERMISSION FROM AVW CO.

DRAWN BY	Tittu	CUSTOMER: AVW Equipment Co.	
CHECKED BY		PROJECT: TR4 - Dual Arm Top Brush Hydraulic	
QTY		DESCRIPTION: Top Brush Universal Motor Mount	
RELEASE DATE	7/30/2021	PART NUMBER: TR1GA-U	REV#
DIMENSION ARE IN INCHES & PROVIDED PRIOR TO SURFACE TREATMENTS, UNLESS NOTED.		SIZE A	EST WEIGHT: SHEET 27 of 42

A 3D perspective view of a dark gray, rectangular metal plate. The plate features a large central circular hole. It has several smaller holes and slots: two small circular holes near the top left corner, two small circular holes near the top right corner, two small circular holes near the bottom left corner, and two small circular holes near the bottom right corner. There are also two vertical rectangular slots on the left side and two vertical rectangular slots on the right side. The plate is shown at an angle, highlighting its thickness and the various features.

Technical drawing of a mechanical part, likely a flange or bracket, showing two views: a top view and a side view. Dimensions are given in inches.

Top View Dimensions:

- Overall width: 14"
- Overall height: 12"
- Top edge: R $\frac{1}{2}$ " TYP.
- Bottom edge: 56° angle
- Central hole: Ø4 $\frac{3}{8}$ "
- Four corner holes: Ø $\frac{5}{16}$ " THRU.
- Four side holes: Ø $\frac{5}{8}$ " THRU.
- Dimensions for holes and slots: 1", 6", 14", 6", 1", 11 $\frac{1}{16}$ ", 4 $\frac{9}{16}$ ", 3 $\frac{13}{16}$ ", 5 $\frac{3}{4}$ ", 3 $\frac{3}{16}$ ", 5 $\frac{5}{16}$ ", 2", 5 $\frac{15}{16}$ ", 7", 3 $\frac{1}{4}$ ", 3 $\frac{3}{8}$ ".

Side View Dimensions:

- Overall width: 6 $\frac{3}{8}$ "
- Overall height: 5 $\frac{1}{8}$ "
- Top edge: R $\frac{1}{2}$ " TYP.
- Bottom edge: R $\frac{15}{16}$ "
- Central semi-circular cutout: R $\frac{15}{16}$ "
- Four corner holes: Ø $\frac{5}{16}$ " THRU.
- Four side holes: Ø $\frac{5}{8}$ " THRU.
- Dimensions for holes and slots: 1 $\frac{7}{8}$ ", 4", 6 $\frac{3}{8}$ ", 1 $\frac{1}{16}$ ", 3 $\frac{3}{4}$ ", 2", 4", 5 $\frac{1}{8}$ ".

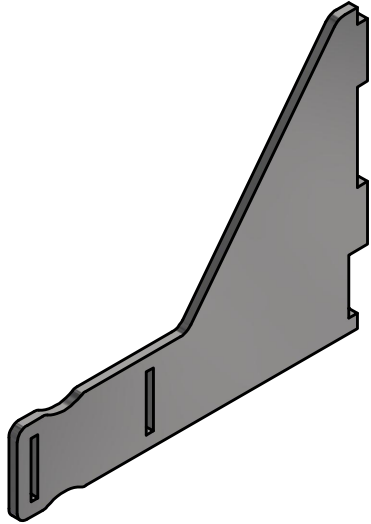


- COMPANY PROPRIETARY NOTE -
THIS DRAWING AND ITS DESIGNS ARE PROPERTY OF AVW EQUIPMENT CO. &
NOT TO BE USED OR REPRODUCED WITHOUT THE PERMISSION FROM AVW CO.

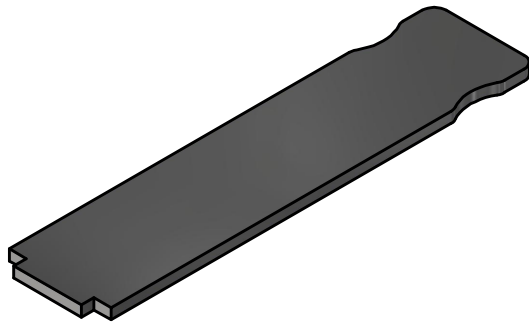
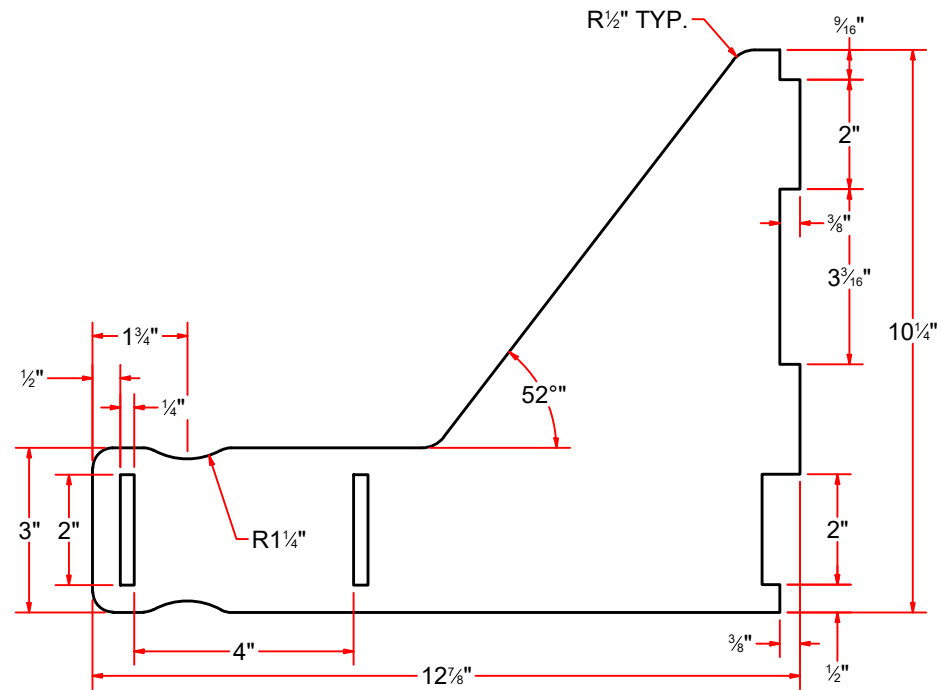
SHEET 28 of 42

PATH:L:\Libraries\AVW Components\Plates\Motor Mount Plates\Universal Motor mount plates\Top Brush\Electric motor mount plate.ipt

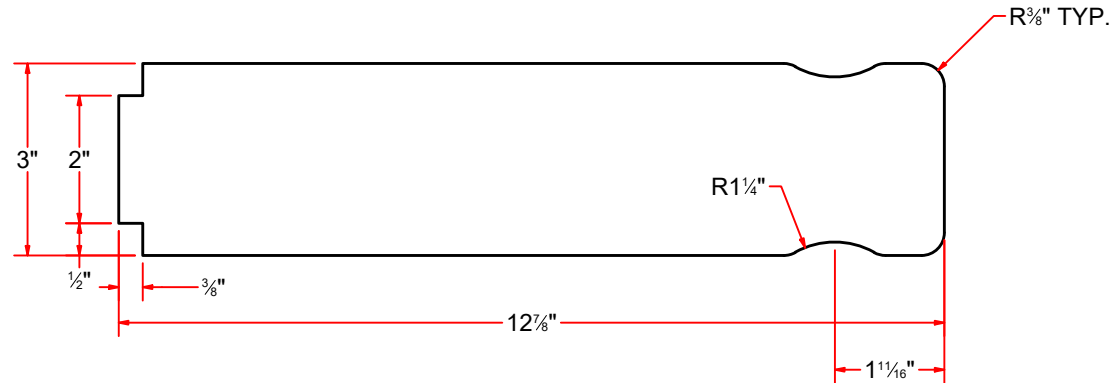
MOTOR MOUNT - Parts



SS Plate #5/16"x13"x10 1/4"



SS Plate #5/16"x13"x3"



AVW EQUIPMENT CO., INC.
105 S. 9TH AVENUE
MAYWOOD, IL 60153
Tel: 708-343-7738 Fax: 708-343-9065
WWW.AVWEQUIPMENT.COM

- COMPANY PROPRIETARY NOTE -

THIS DRAWING AND ITS DESIGNS ARE PROPERTY OF AVW EQUIPMENT CO. & IT IS NOT TO BE USED OR REPRODUCED WITHOUT THE PERMISSION FROM AVW CO.

DRAWN BY

Tittu

CUSTOMER: AVW Equipment Co.

CHECKED BY

PROJECT: TR4 - Dual Arm Top Brush Hydraulic

QTY

DESCRIPTION: SS Plate #5/16"x13"x10 1/4"

RELEASE DATE

7/30/2021

PART NUMBER: TR1GAC-U

REV#

DIMENSION ARE IN INCHES & PROVIDED PRIOR TO SURFACE TREATMENTS, UNLESS NOTED.

SIZE A

EST WEIGHT:

SHEET 29 of 42

PATH:L:\Libraries\AVW Components\Plates\Motor Mount Plates\Universal Motor mount plates\Top Brush\Side Plate laser.ipt

MOTOR MOUNT - Parts

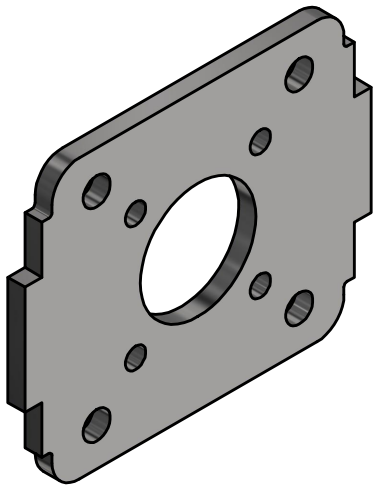
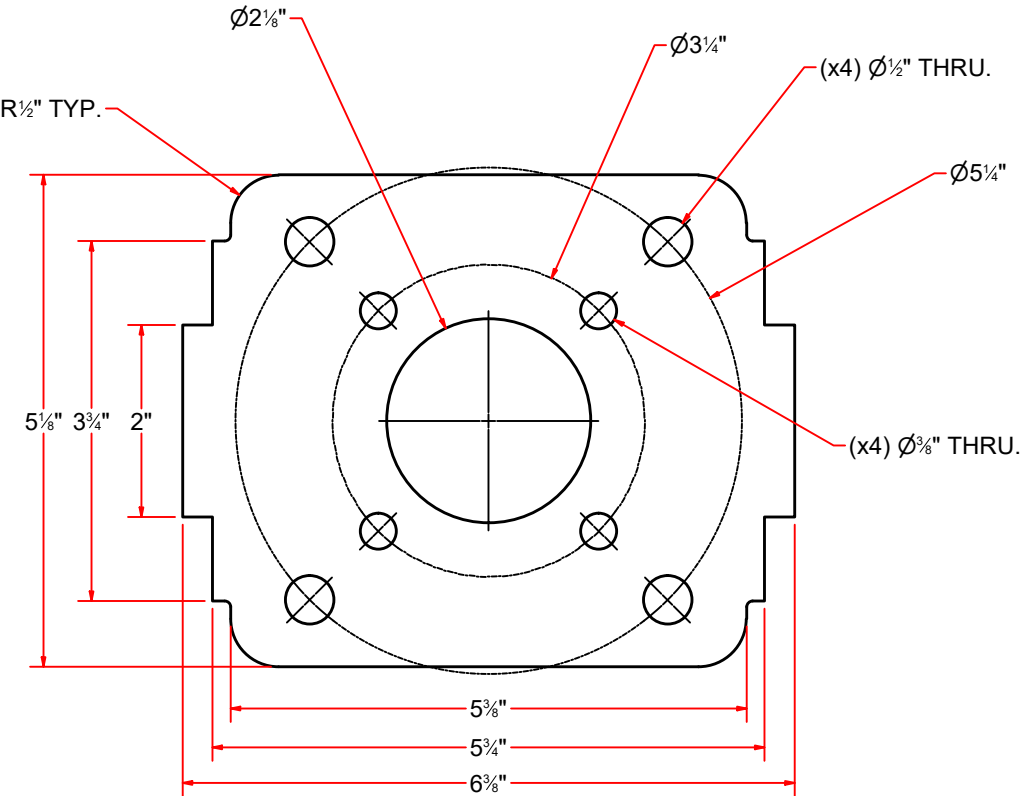


Plate #5/16"x5 1/8"x6 3/8"LG.

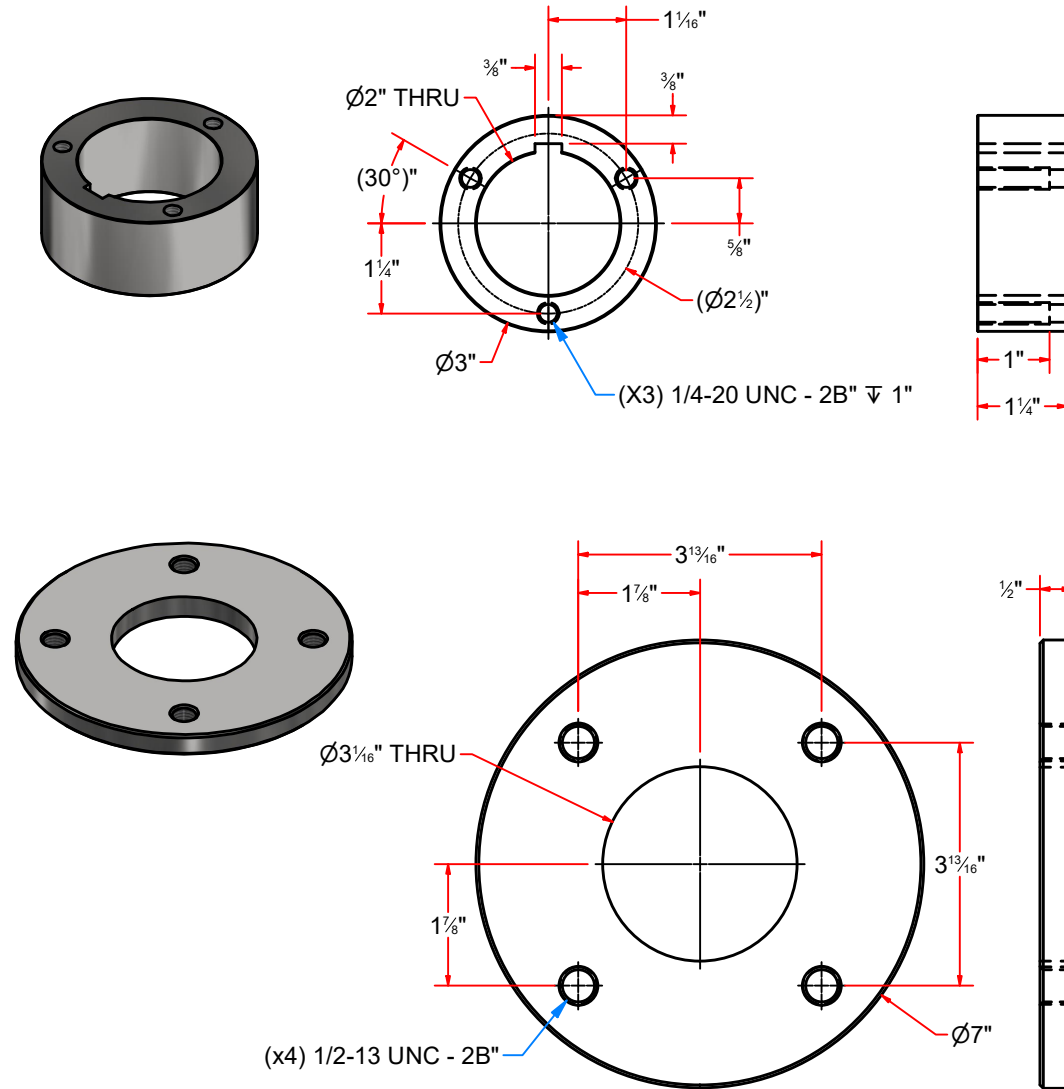


AVW EQUIPMENT CO., INC.
105 S. 9TH AVENUE
MAYWOOD, IL 60153
Tel: 708-343-7738 Fax: 708-343-9065
WWW.AVWEQUIPMENT.COM

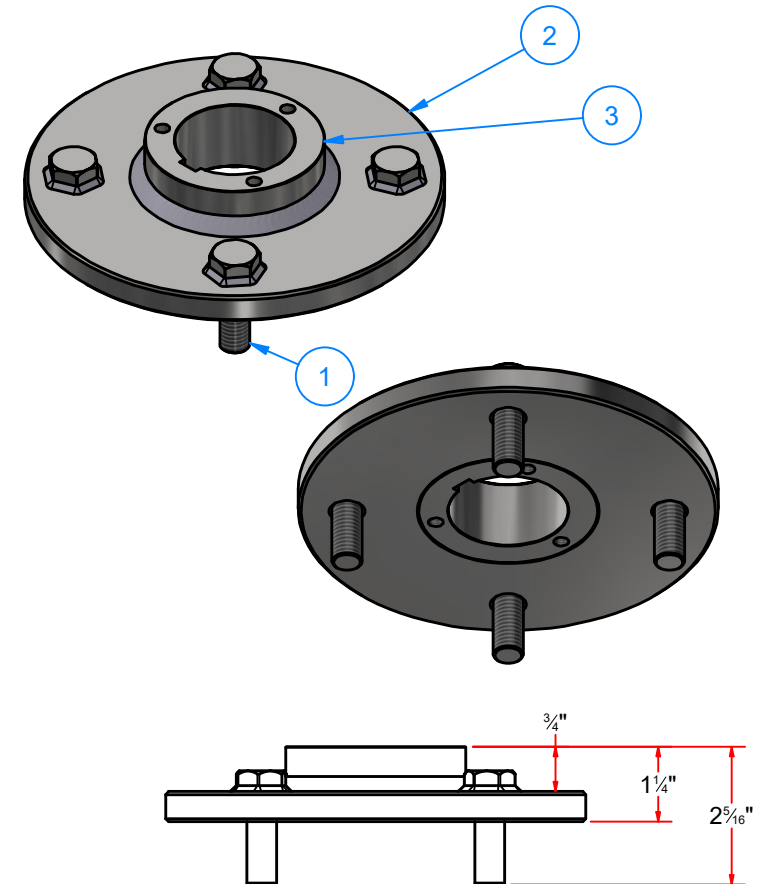
- COMPANY PROPRIETARY NOTE -
THIS DRAWING AND ITS DESIGNS ARE PROPERTY OF AVW EQUIPMENT CO. &
IT IS NOT TO BE USED OR REPRODUCED WITHOUT THE PERMISSION FROM AVW CO.

DRAWN BY	Tittu	CUSTOMER: AVW Equipment Co.	
CHECKED BY		PROJECT: TR4 - Dual Arm Top Brush Hydraulic	
QTY		DESCRIPTION: Plate #5/16"x5 1/8"x6 3/8"LG.	
RELEASE DATE	7/30/2021	PART NUMBER: TR1GAD-U	REV#
DIMENSION ARE IN INCHES & PROVIDED PRIOR TO SURFACE TREATMENTS, UNLESS NOTED.		SIZE A	EST WEIGHT: SHEET 30 of 42

RB2AEB-P1-1-0106 - Brush Connecting Disc



Parts List		
ITEM	QTY	DESCRIPTION
1	4	1/2"-13 x 1 1/2" L Hex Screw
2	1	Oscillating Plate #1/2" x 7" O.D.
3	1	Weld on Hub



AVW EQUIPMENT CO., INC.
105 S. 9TH AVENUE
MAYWOOD, IL 60153
Tel: 708-343-7738 Fax: 708-343-9065
WWW.AVWEQUIPMENT.COM

- COMPANY PROPRIETARY NOTE -

THIS DRAWING AND ITS DESIGNS ARE PROPERTY OF AVW EQUIPMENT CO. & IT IS NOT TO BE USED OR REPRODUCED WITHOUT THE PERMISSION FROM AVW CO.

DRAWN BY

Tittu

CUSTOMER: AVW Equipment Co.

CHECKED BY

PROJECT: TR4 - Dual Arm Top Brush Hydraulic

QTY

DESCRIPTION: Brush Connecting Disc

RELEASE DATE

7/30/2021

PART NUMBER: RB2AEB-P1-1-0106

REV#

DIMENSION ARE IN INCHES & PROVIDED PRIOR TO SURFACE TREATMENTS, UNLESS NOTED.

SIZE A

EST WEIGHT: 1 lbmass

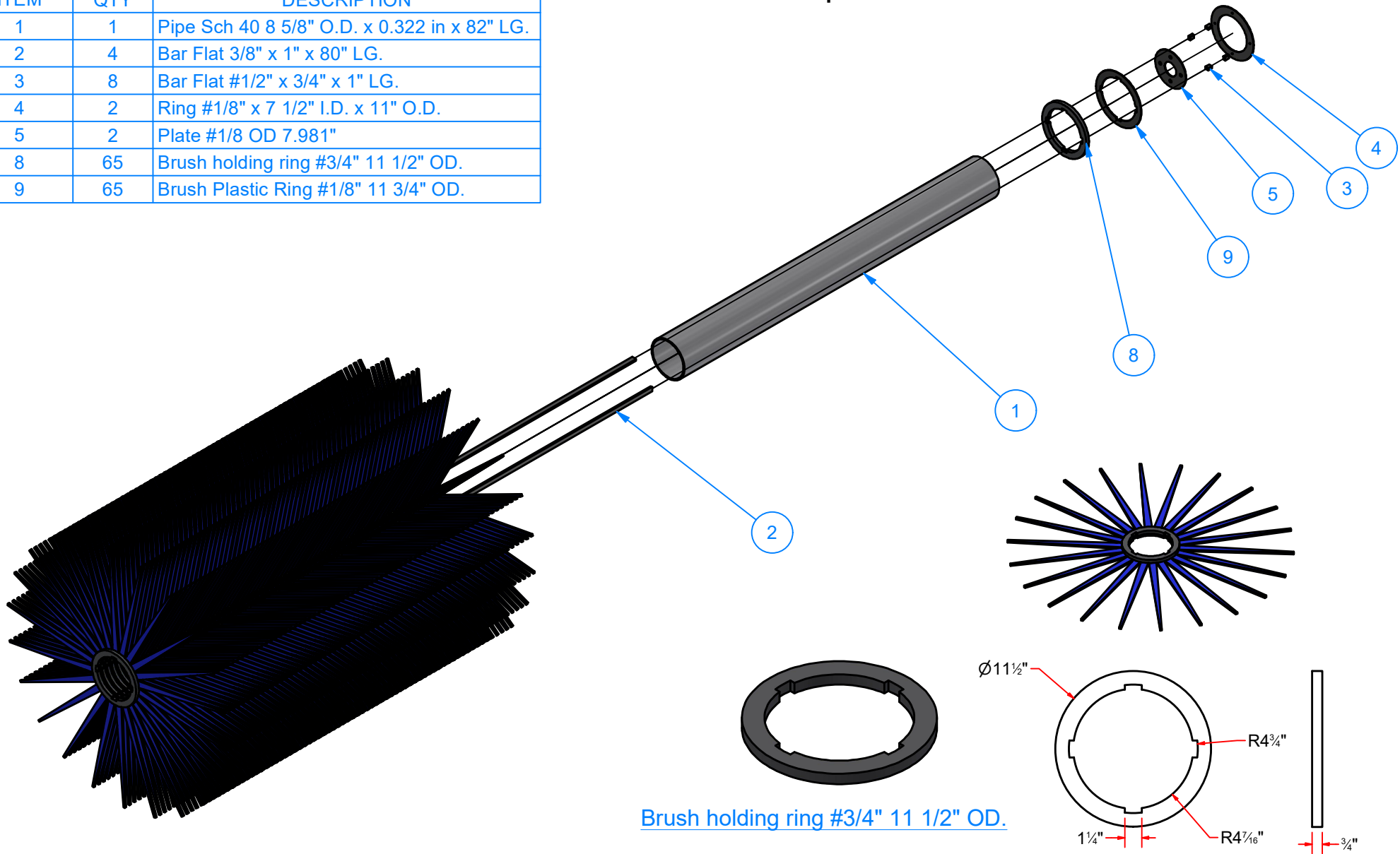
SHEET 31 of 42

PATH:L:\Libraries\AVW Components\Brush Connecting Disk\RB2AEB-P1-1-0106_Brush Connecting Disk\RB2AEB-P1-1-0106.iam

Parts List

ITEM	QTY	DESCRIPTION
1	1	Pipe Sch 40 8 5/8" O.D. x 0.322 in x 82" LG.
2	4	Bar Flat 3/8" x 1" x 80" LG.
3	8	Bar Flat #1/2" x 3/4" x 1" LG.
4	2	Ring #1/8" x 7 1/2" I.D. x 11" O.D.
5	2	Plate #1/8 OD 7.981"
8	65	Brush holding ring #3/4" 11 1/2" OD.
9	65	Brush Plastic Ring #1/8" 11 3/4" OD.

TR1H - Top Brush w/ Core



Brush holding ring #3/4" 11 1/2" OD.



AVW EQUIPMENT CO., INC.
105 S. 9TH AVENUE
MAYWOOD, IL 60153
Tel: 708-343-7738 Fax: 708-343-9065
WWW.AVWEQUIPMENT.COM

- COMPANY PROPRIETARY NOTE -

THIS DRAWING AND ITS DESIGNS ARE PROPERTY OF AVW EQUIPMENT CO. & IT IS NOT TO BE USED OR REPRODUCED WITHOUT THE PERMISSION FROM AVW CO.

DRAWN BY

Tittu

CUSTOMER: AVW Equipment Co.

CHECKED BY

PROJECT: TR4 - Dual Arm Top Brush Hydraulic

QTY

DESCRIPTION: Top Brush w/ Core

RELEASE DATE

7/30/2021

PART NUMBER: TR1H

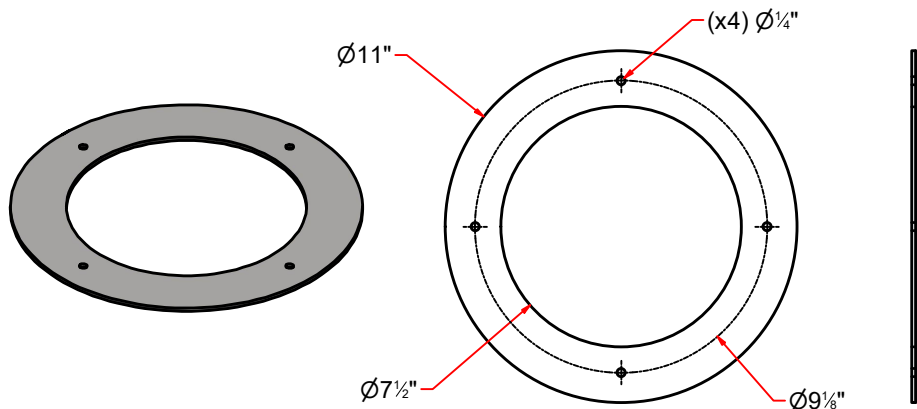
REV#

DIMENSION ARE IN INCHES & PROVIDED PRIOR TO SURFACE TREATMENTS, UNLESS NOTED.

SIZE A

EST WEIGHT: 638 lbmass

SHEET 32 of 42



Ring #1/8" x 7 1/2" I.D. x 11" O.D.

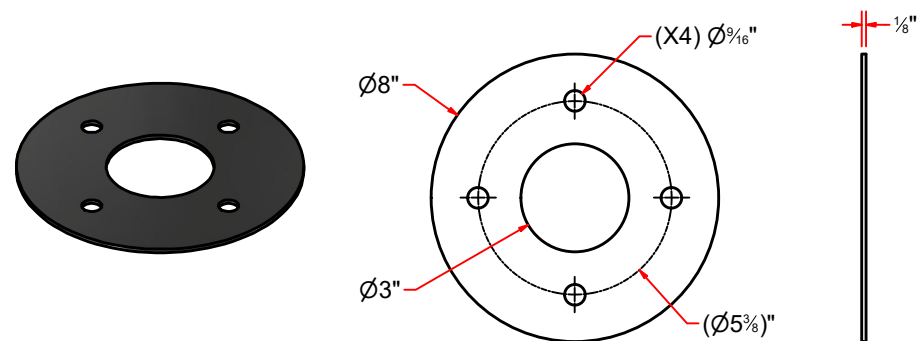
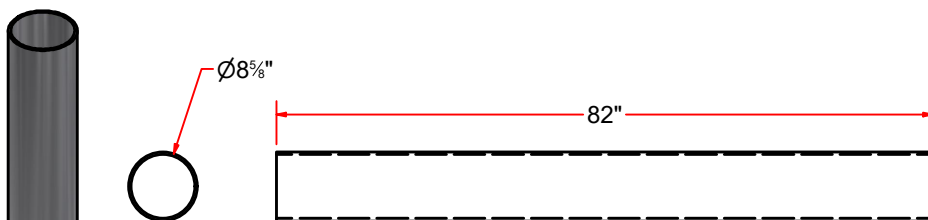
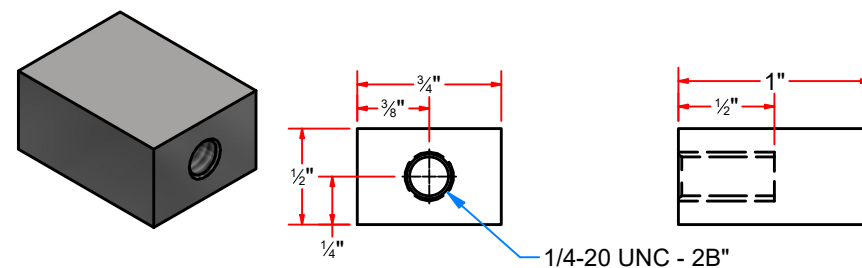


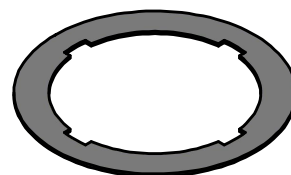
Plate #1/8 OD 7.981"



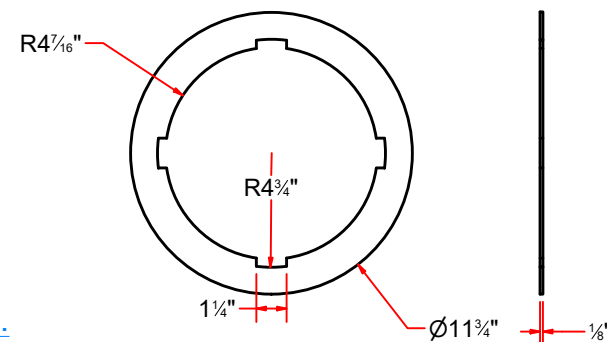
Pipe Sch 40 8 5/8" O.D. x 0.322 in x 82" LG.



Bar Flat #1/2" x 3/4" x 1" LG.



Brush Plastic Ring #1/8" 11 3/4" OD.



AVW EQUIPMENT CO., INC.
105 S. 9TH AVENUE
MAYWOOD, IL 60153
Tel: 708-343-7738 Fax: 708-343-9065
WWW.AVWEQUIPMENT.COM

- COMPANY PROPRIETARY NOTE -

THIS DRAWING AND ITS DESIGNS ARE PROPERTY OF AVW EQUIPMENT CO. & IT IS NOT TO BE USED OR REPRODUCED WITHOUT THE PERMISSION FROM AVW CO.

DRAWN BY

Tittu

CUSTOMER: AVW Equipment Co.

CHECKED BY

PROJECT: TR4 - Dual Arm Top Brush Hydraulic

QTY

DESCRIPTION: Plate #1/8 OD 7.981"

RELEASE DATE

7/30/2021

PART NUMBER: TR1HB

REV#

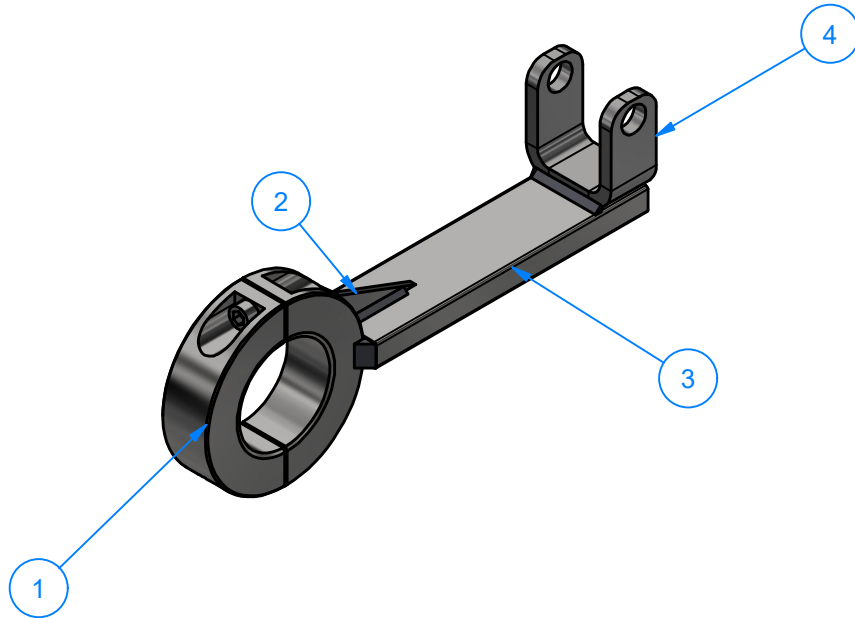
DIMENSION ARE IN INCHES & PROVIDED PRIOR TO SURFACE TREATMENTS, UNLESS NOTED.

SIZE A

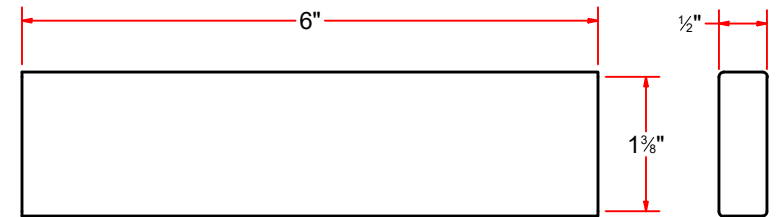
EST WEIGHT:

SHEET 33 of 42

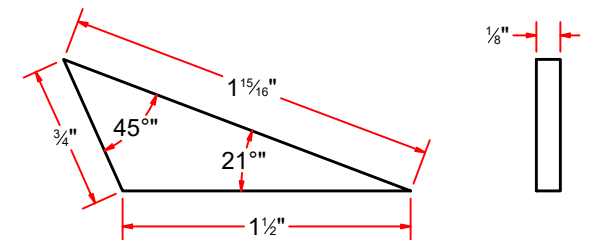
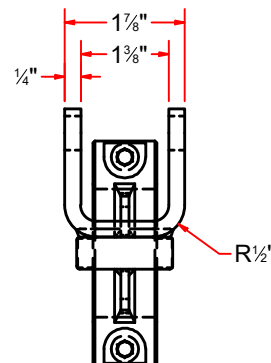
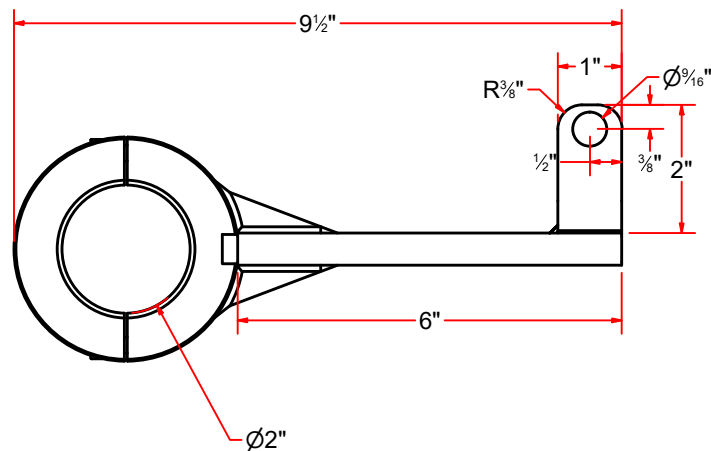
TR1ACF0304 - Air Cylinder Bracket-Top Brush



Parts List		
ITEM	QTY	DESCRIPTION
1	1	2" Two Piece Collars
2	2	GUSSET CYLINDER BRACKET
3	1	SS Bar #1/2" x 1 1/2" x 6" LG.
4	1	Mount, for air cylinder



SS Bar #1/2" x 1 1/2" x 6" LG.



GUSSET CYLINDER BRACKET



AVW EQUIPMENT CO., INC.
105 S. 9TH AVENUE
MAYWOOD, IL 60153
Tel: 708-343-7738 Fax: 708-343-9065
WWW.AVWEQUIPMENT.COM

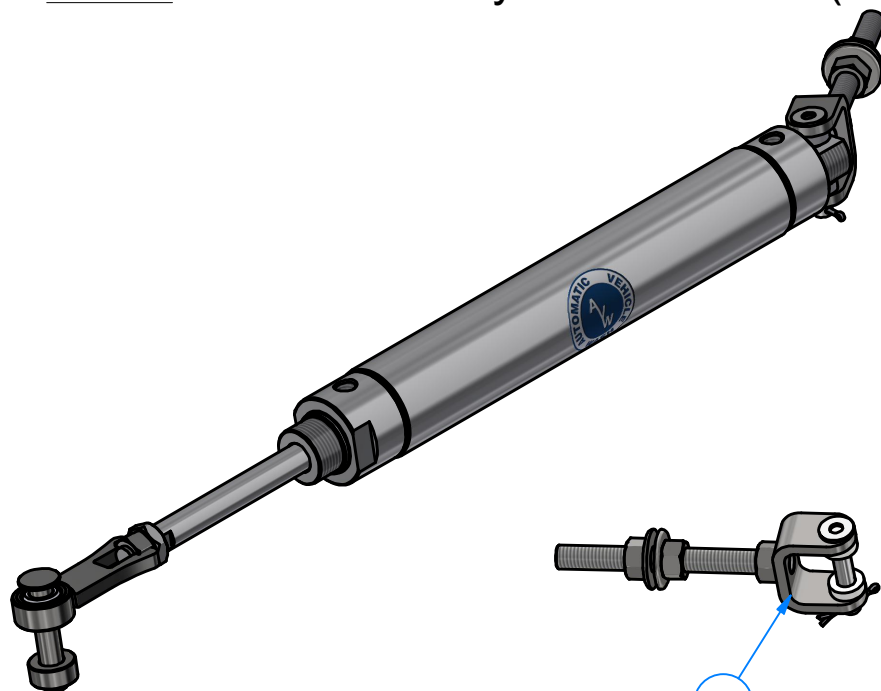
- COMPANY PROPRIETARY NOTE -

THIS DRAWING AND ITS DESIGNS ARE PROPERTY OF AVW EQUIPMENT CO. & IT IS NOT TO BE USED OR REPRODUCED WITHOUT THE PERMISSION FROM AVW CO.

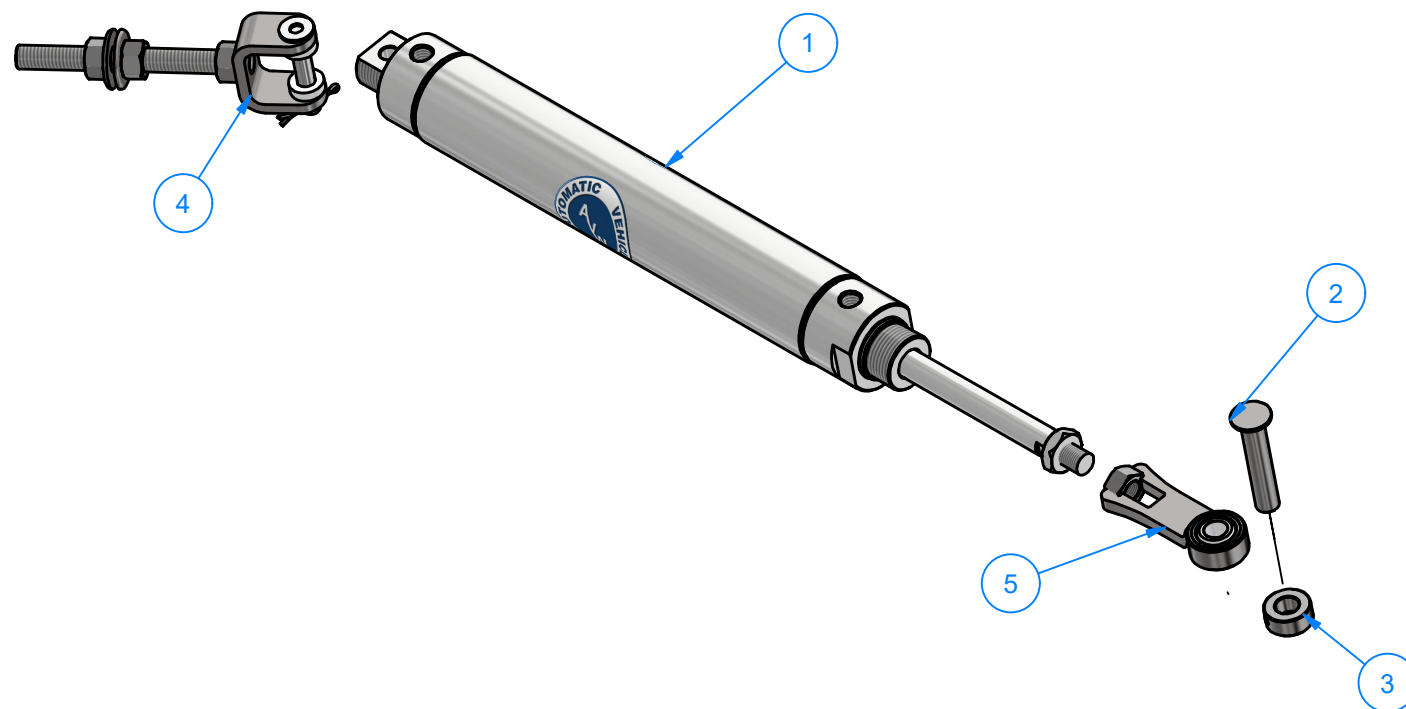
DRAWN BY	Tittu	CUSTOMER: AVW Equipment Co.	
CHECKED BY		PROJECT: TR4 - Dual Arm Top Brush Hydraulic	
QTY		DESCRIPTION: Air Cylinder Bracket-Top Brush	
RELEASE DATE	7/30/2021	PART NUMBER: TR1ACF0304	REV#
DIMENSION ARE IN INCHES & PROVIDED PRIOR TO SURFACE TREATMENTS, UNLESS NOTED.		SIZE A	EST WEIGHT: 2 lbmass
			SHEET 34 of 42

PATH:L:\Libraries\AVW Components\TR1ACF304 - Front Bracket For Air Cylinder\TR1ACF0304 - Front Bracket for Air Cylinder.iam

TR1R - Retract Air Cylinder 2" x 10" (OPTIONAL)



Parts List		
ITEM	QTY	DESCRIPTION
1	1	Air Cylinder 2" x 10"
2	1	Pin 1/2" x 2 1/2"
3	1	1/2" Set Screw Collar
4	1	Retract kit Rear Mounting Assy
5	1	Ball Joint End Rod



AVW EQUIPMENT CO., INC.
105 S. 9TH AVENUE
MAYWOOD, IL 60153
Tel: 708-343-7738 Fax: 708-343-9065
WWW.AVWEQUIPMENT.COM

- COMPANY PROPRIETARY NOTE -

THIS DRAWING AND ITS DESIGNS ARE PROPERTY OF AVW EQUIPMENT CO. & IT IS NOT TO BE USED OR REPRODUCED WITHOUT THE PERMISSION FROM AVW CO.

DRAWN BY

Tittu

CUSTOMER: AVW Equipment Co.

CHECKED BY

PROJECT: TR4 - Dual Arm Top Brush Hydraulic

QTY

DESCRIPTION: Retract Air Cylinder 2" x 10" (OPTIONAL)

RELEASE DATE

7/30/2021

PART NUMBER: TR1R

REV#

DIMENSION ARE IN INCHES & PROVIDED PRIOR TO SURFACE TREATMENTS, UNLESS NOTED.

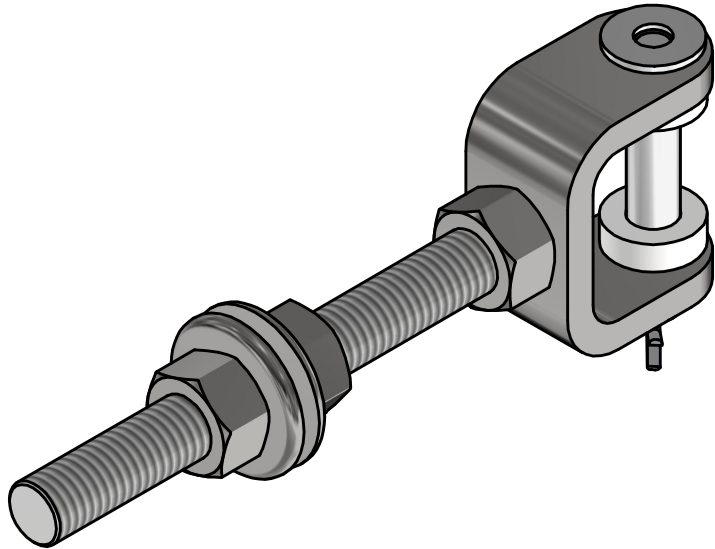
SIZE A

EST WEIGHT:

SHEET 35 of 42

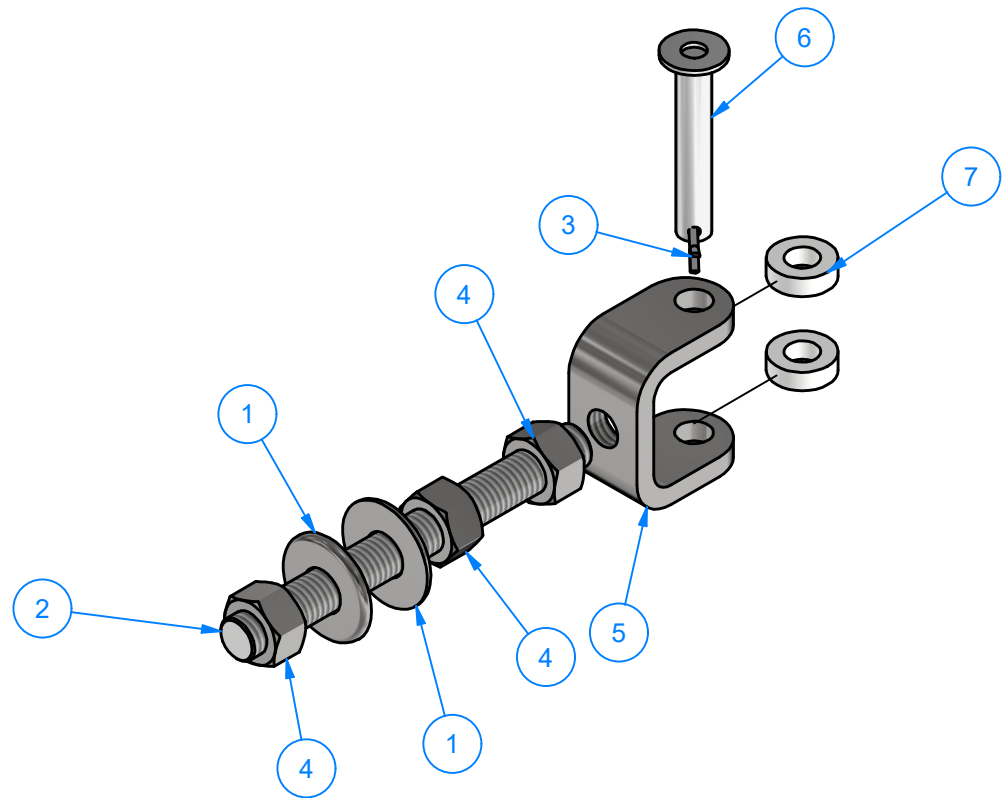
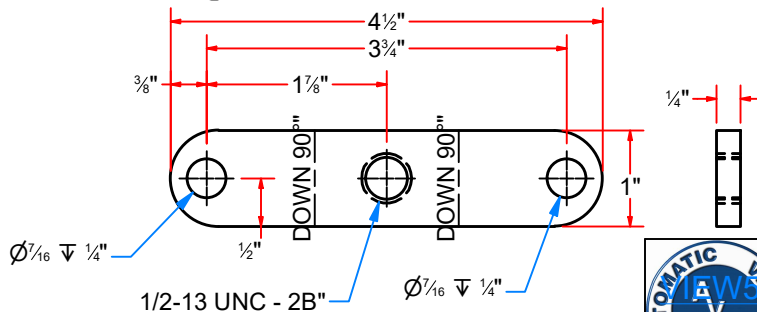
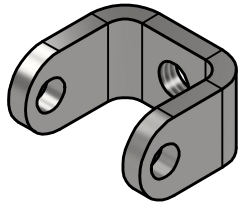
PATH:L:\Libraries\Parts\Air Cylinders\Retract Kit - Air Cylinder 2 x 10.iam

WA2GA - Retract kit Rear Mounting Assy



Parts List		
ITEM	QTY	DESCRIPTION
1	2	1/2" Flat Washer
2	1	Threaded Rod 1/2"-13 X 5" LG.
3	1	Cotter Pin
4	3	1/2" - 13 UNC Hex Nut
5	1	Clevis w/ threaded hole
6	1	Pin 3/8" x 2 1/4" LG
7	2	Retract kit Rear Mount Bush

WA2GA1 - Clevis w/ threaded hole



AVW EQUIPMENT CO., INC.
105 S. 9TH AVENUE
MAYWOOD, IL 60153
Tel: 708-343-7738 Fax: 708-343-9065
WWW.AVWEQUIPMENT.COM

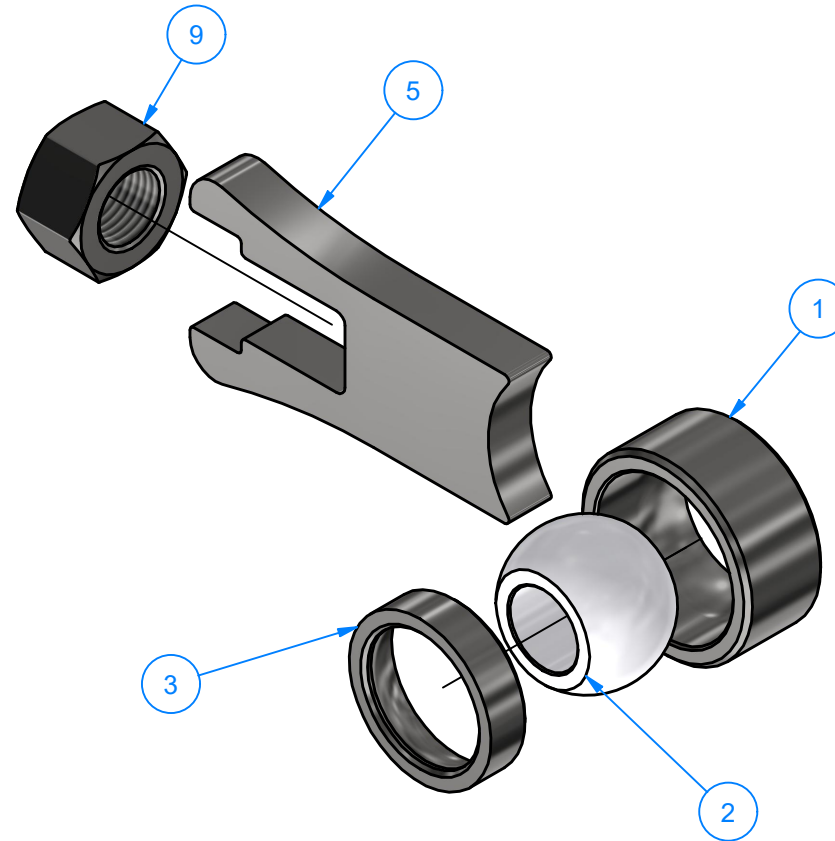
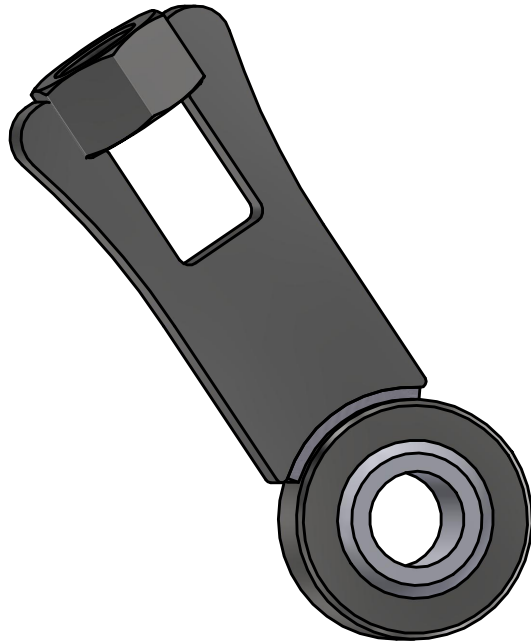
- COMPANY PROPRIETARY NOTE -

THIS DRAWING AND ITS DESIGNS ARE PROPERTY OF AVW EQUIPMENT CO. & IT IS NOT TO BE USED OR REPRODUCED WITHOUT THE PERMISSION FROM AVW CO.

PATH:L:\Libraries\Parts\Air Cylinders\Parts\Retract kit Rear Mounting Assy.iam

DRAWN BY	Tittu	CUSTOMER: AVW Equipment Co.	
CHECKED BY		PROJECT: TR4 - Dual Arm Top Brush Hydraulic	
QTY		DESCRIPTION: Retract kit Rear Mounting Assy	
RELEASE DATE	7/30/2021	PART NUMBER: WA2GA	REV#
DIMENSION ARE IN INCHES & PROVIDED PRIOR TO SURFACE TREATMENTS, UNLESS NOTED.		SIZE A	EST WEIGHT:
			SHEET 36 of 42

BJ1-2-20 - Ball Joint End Rod



Parts List		
ITEM	QTY	DESCRIPTION
1	1	Large Ring OD 1 1/4"x ID 1"x 9/16" LG
2	1	Nylon Ball Insert 1" OD. x 1/2" ID. x 5/8" LG
3	1	Small Ring OD 1"xID 3/4"x1/4"LG
5	1	Cylinder Lever #5/16x 1 9/32"x 2 3/8"
9	1	Hex Nut - 1/2"-20 SS



AVW EQUIPMENT CO., INC.
105 S. 9TH AVENUE
MAYWOOD, IL 60153
Tel: 708-343-7738 Fax: 708-343-9065
WWW.AVWEQUIPMENT.COM

- COMPANY PROPRIETARY NOTE -

THIS DRAWING AND ITS DESIGNS ARE PROPERTY OF AVW EQUIPMENT CO. & IT IS NOT TO BE USED OR REPRODUCED WITHOUT THE PERMISSION FROM AVW CO.

DRAWN BY

Tittu

CUSTOMER: AVW Equipment Co.

CHECKED BY

PROJECT: TR4 - Dual Arm Top Brush Hydraulic

QTY

DESCRIPTION: Ball Joint End Rod

RELEASE DATE

7/30/2021

PART NUMBER: BJ1-2-20

REV#

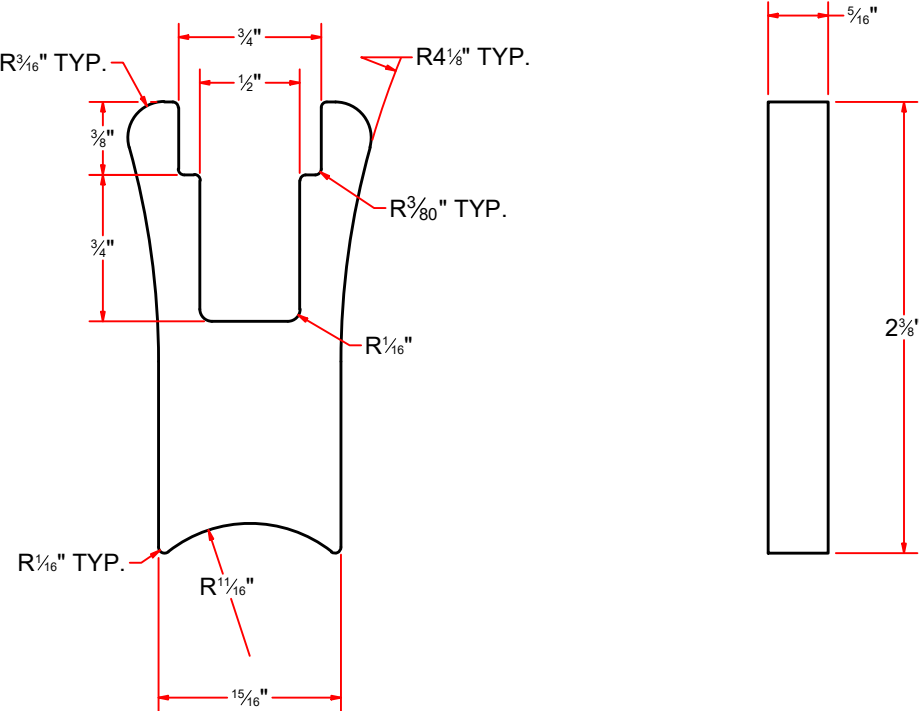
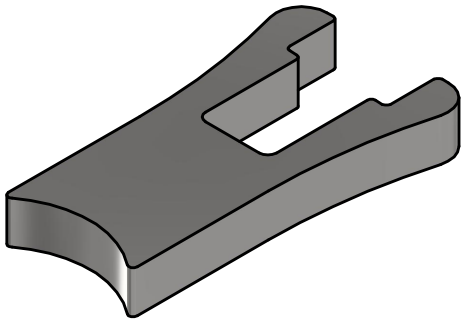
DIMENSION ARE IN INCHES & PROVIDED PRIOR TO SURFACE TREATMENTS, UNLESS NOTED.

SIZE
A

EST WEIGHT:

SHEET 37 of 42

BJ1-2-20D - Cylinder Lever #5/16x 1 9/32"x 2 3/8"

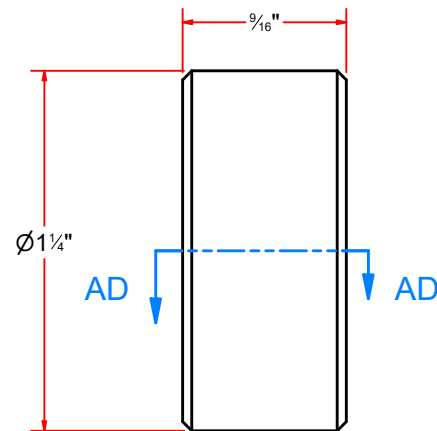
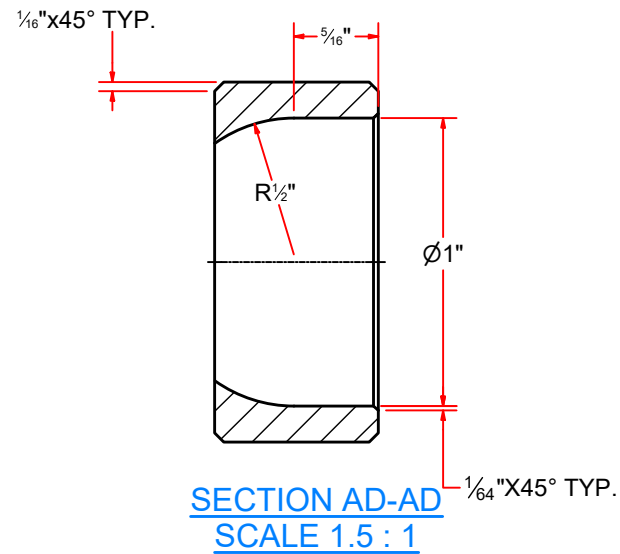


AVW EQUIPMENT CO., INC.
105 S. 9TH AVENUE
MAYWOOD, IL 60153
Tel: 708-343-7738 Fax: 708-343-9065
WWW.AVWEQUIPMENT.COM

- COMPANY PROPRIETARY NOTE -
THIS DRAWING AND ITS DESIGNS ARE PROPERTY OF AVW EQUIPMENT CO. &
IT IS NOT TO BE USED OR REPRODUCED WITHOUT THE PERMISSION FROM AVW CO.

DRAWN BY	Tittu	CUSTOMER: AVW Equipment Co.	
CHECKED BY		PROJECT: TR4 - Dual Arm Top Brush Hydraulic	
QTY		DESCRIPTION: Cylinder Lever #5/16x 1 9/32"x 2 3/8"	
RELEASE DATE	7/30/2021	PART NUMBER: BJ1-2-20D	REV#
DIMENSION ARE IN INCHES & PROVIDED PRIOR TO SURFACE TREATMENTS, UNLESS NOTED.		SIZE A	EST WEIGHT:
			SHEET 38 of 42

BJ1-2-20C - Large Ring OD 1 1/4"x ID 1"x 9/16" LG



AVW EQUIPMENT CO., INC.
105 S. 9TH AVENUE
MAYWOOD, IL 60153
Tel: 708-343-7738 Fax: 708-343-9065
WWW.AVWEQUIPMENT.COM

- COMPANY PROPRIETARY NOTE -

THIS DRAWING AND ITS DESIGNS ARE PROPERTY OF AVW EQUIPMENT CO. & IT IS NOT TO BE USED OR REPRODUCED WITHOUT THE PERMISSION FROM AVW CO.

DRAWN BY

Tittu

CUSTOMER: AVW Equipment Co.

CHECKED BY

PROJECT: TR4 - Dual Arm Top Brush Hydraulic

QTY

DESCRIPTION: Large Ring OD 1 1/4"x ID 1"x 9/16" LG

RELEASE DATE

7/30/2021

PART NUMBER: BJ1-2-20C

REV#

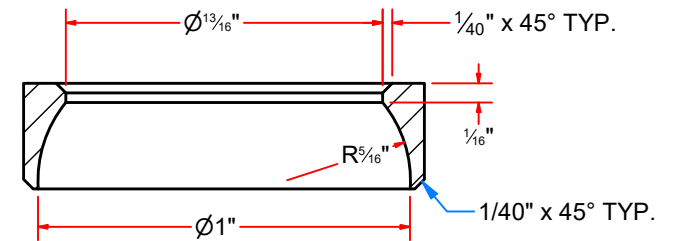
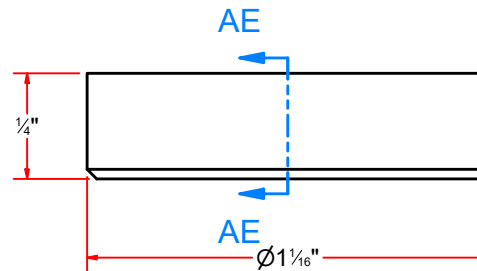
DIMENSION ARE IN INCHES & PROVIDED PRIOR TO SURFACE TREATMENTS, UNLESS NOTED.

SIZE
A

EST WEIGHT:

SHEET 39 of 42

BJ1-2-20B - Small Ring OD 1"xID 3/4"x1/4"LG



SECTION AE-AE
SCALE 2 : 1



AVW EQUIPMENT CO., INC.
105 S. 9TH AVENUE
MAYWOOD, IL 60153
Tel: 708-343-7738 Fax: 708-343-9065
WWW.AVWEQUIPMENT.COM

- COMPANY PROPRIETARY NOTE -

THIS DRAWING AND ITS DESIGNS ARE PROPERTY OF AVW EQUIPMENT CO. & IT IS NOT TO BE USED OR REPRODUCED WITHOUT THE PERMISSION FROM AVW CO.

DRAWN BY

Tittu

CUSTOMER: AVW Equipment Co.

CHECKED BY

PROJECT: TR4 - Dual Arm Top Brush Hydraulic

QTY

DESCRIPTION: Small Ring OD 1"xID 3/4"x1/4"LG

RELEASE DATE

7/30/2021

PART NUMBER: BJ1-2-20B

REV#

DIMENSION ARE IN INCHES & PROVIDED PRIOR TO SURFACE TREATMENTS, UNLESS NOTED.

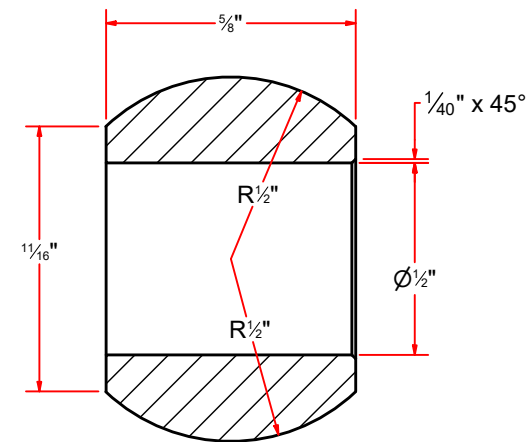
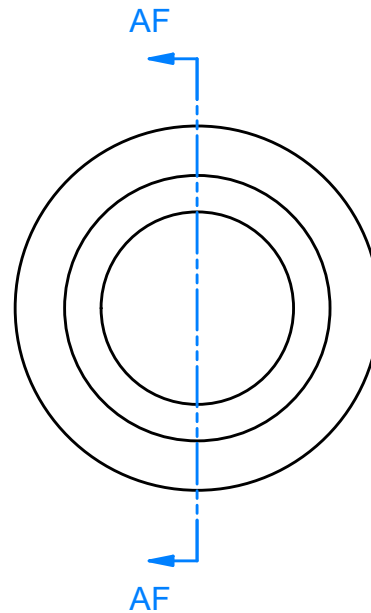
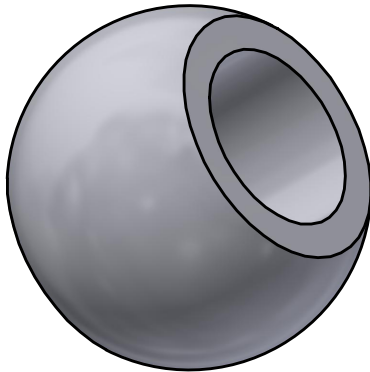
SIZE
A

EST WEIGHT:

SHEET 40 of 42

PATH:L:\Libraries\AVW Components\Ball Joint Rod End\Ball Joint Rod End\BJRE_002.ipt

BJ1-2-20A - Nylon Ball Insert 1" OD. x 1/2" ID. x 5/8" LG



SECTION AF-AF
SCALE 2 : 1



AVW EQUIPMENT CO., INC.
105 S. 9TH AVENUE
MAYWOOD, IL 60153
Tel: 708-343-7738 Fax: 708-343-9065
WWW.AVWEQUIPMENT.COM

- COMPANY PROPRIETARY NOTE -

THIS DRAWING AND ITS DESIGNS ARE PROPERTY OF AVW EQUIPMENT CO. & IT IS NOT TO BE USED OR REPRODUCED WITHOUT THE PERMISSION FROM AVW CO.

DRAWN BY

Tittu

CUSTOMER: AVW Equipment Co.

CHECKED BY

PROJECT: TR4 - Dual Arm Top Brush Hydraulic

QTY

DESCRIPTION: Nylon Ball Insert 1" OD. x 1/2" ID. x 5/8" LG

RELEASE DATE

7/30/2021

PART NUMBER: BJ1-2-20A

REV#

DIMENSION ARE IN INCHES & PROVIDED PRIOR TO SURFACE TREATMENTS, UNLESS NOTED.

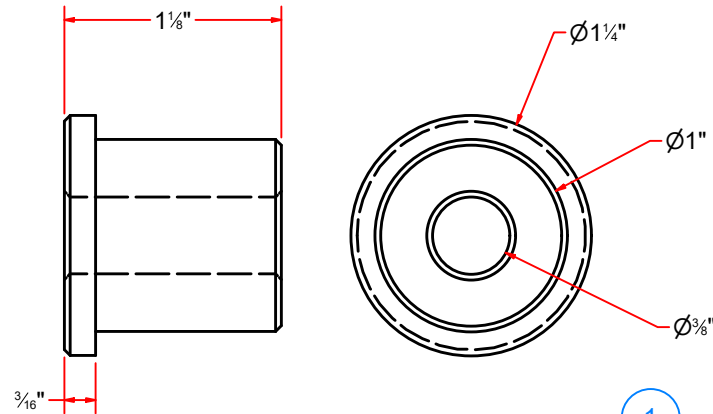
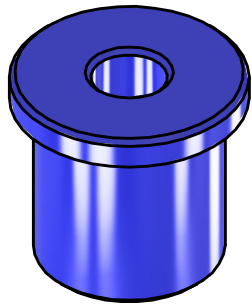
SIZE
A

EST WEIGHT:

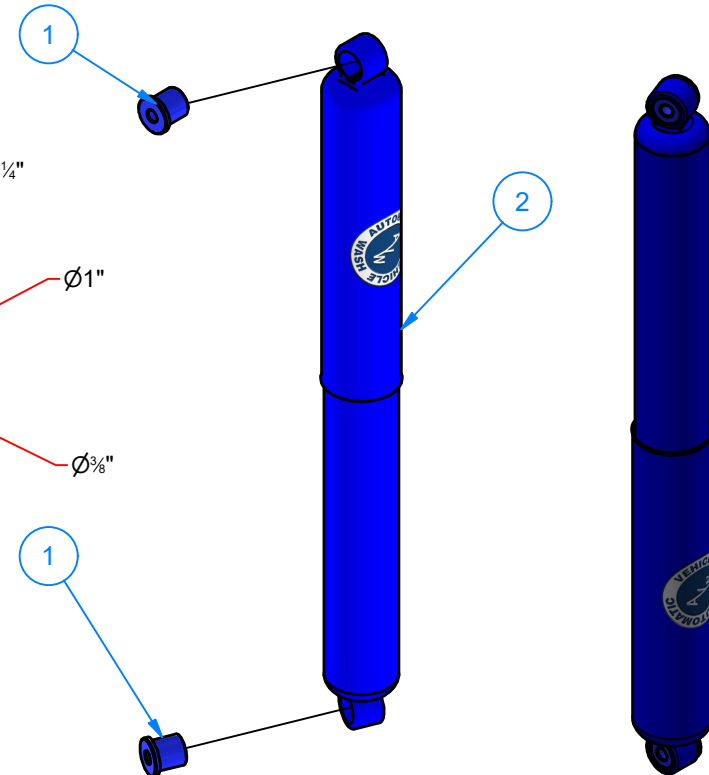
SHEET 41 of 42

WA1FA - Blue Shock Absorber Assembly

Parts List		
ITEM	QTY	DESCRIPTION
1	2	UHMW Bush. 3/8ID x1OD x 1-1/8L
2	1	Shock Absorber (Without Bushings)



UHMW Bush. 3/8ID x1OD x 1-1/8L



AVW EQUIPMENT CO., INC.
105 S. 9TH AVENUE
MAYWOOD, IL 60153
Tel: 708-343-7738 Fax: 708-343-9065
WWW.AVWEQUIPMENT.COM

- COMPANY PROPRIETARY NOTE -

THIS DRAWING AND ITS DESIGNS ARE PROPERTY OF AVW EQUIPMENT CO. & IT IS NOT TO BE USED OR REPRODUCED WITHOUT THE PERMISSION FROM AVW CO.

DRAWN BY

Tittu

CUSTOMER: AVW Equipment Co.

CHECKED BY

PROJECT: TR4 - Dual Arm Top Brush Hydraulic

QTY

DESCRIPTION: Blue Shock Absorber Assembly

RELEASE DATE

7/30/2021

PART NUMBER: WA1FA

REV#

DIMENSION ARE IN INCHES & PROVIDED PRIOR TO SURFACE TREATMENTS, UNLESS NOTED.

SIZE
A

EST WEIGHT:

SHEET 42 of 42

PATH:L:\Libraries\Parts\Shock Absorbers\VCSA38 - Shock Absorber 3_8\WA1FA - Shock Absorber Assembly.iam