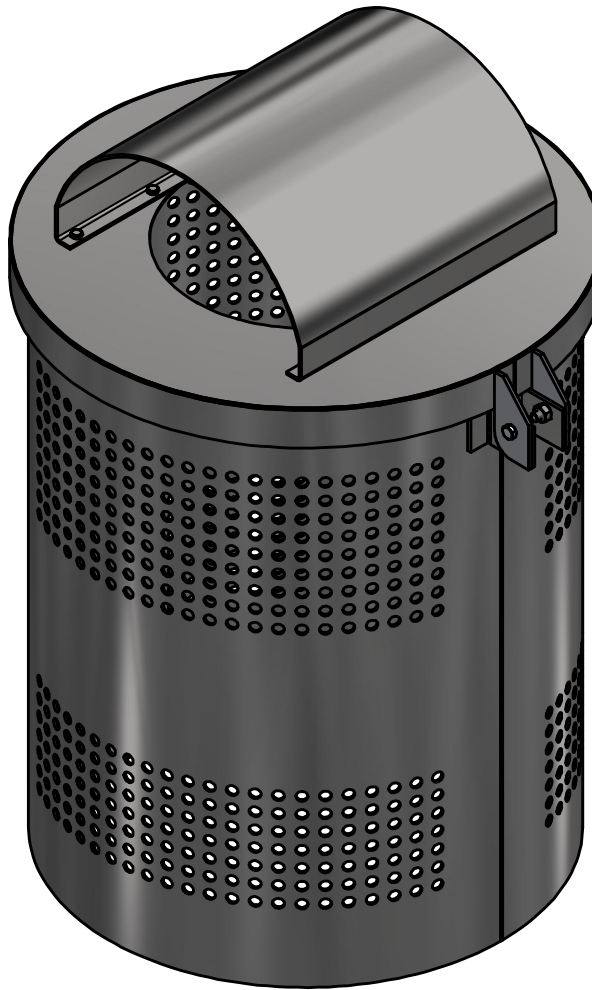



TS3352-30 - Trash Can 30 Gal



 <div>AVW EQUIPMENT CO., INC. 105 S. 9TH AVENUE MAYWOOD, IL 60153 Tel: 708-343-7738 Fax: 708-343-9065 WWW.AVWEQUIPMENT.COM</div>	DRAWN BY	Tittu	CUSTOMER: AVW Equipment Co.		
	CHECKED BY		PROJECT: TS3352-30 - Trash Can 30 Gal		
	QTY		DESCRIPTION: Trash Can 30 Gal		
<div>- COMPANY PROPRIETARY NOTE - THIS DRAWING AND ITS DESIGNS ARE PROPERTY OF AVW EQUIPMENT CO. & IT IS NOT TO BE USED OR REPRODUCED WITHOUT THE PERMISSION FROM AVW CO.</div>	RELEASE DATE	8/24/2021	PART NUMBER: TS3352-30		REV#
	DIMENSION ARE IN INCHES & PROVIDED PRIOR TO SURFACE TREATMENTS, UNLESS NOTED.		SIZE A	EST WEIGHT:	SHEET 1 of 12
PATH:L:\Designs\Product Lines\Trash Cans\30-GAL_Trashcan\Trash Can 30 Gal.iam					

REVISION HISTORY

ECO No.	REV	DESCRIPTION	DATE	ENGINEER	APPROVED
		INITIAL RELEASE	08/24/2021	Tittu	Dusan



AVW EQUIPMENT CO., INC.
105 S. 9TH AVENUE
MAYWOOD, IL 60153
Tel: 708-343-7738 Fax: 708-343-9065
WWW.AVWEQUIPMENT.COM

- COMPANY PROPRIETARY NOTE -

THIS DRAWING AND ITS DESIGNS ARE PROPERTY OF AVW EQUIPMENT CO. &
IT IS NOT TO BE USED OR REPRODUCED WITHOUT THE PERMISSION FROM AVW CO.

PATH:

DRAWN BY

Tittu

CUSTOMER: AVW Equipment Co.

CHECKED BY

PROJECT: TS3352-30 - Trash Can 30 Gal

QTY

DESCRIPTION:

RELEASE
DATE

8/24/2021

PART NUMBER:

REV#

DIMENSION ARE IN INCHES & PROVIDED PRIOR
TO SURFACE TREATMENTS, UNLESS NOTED.

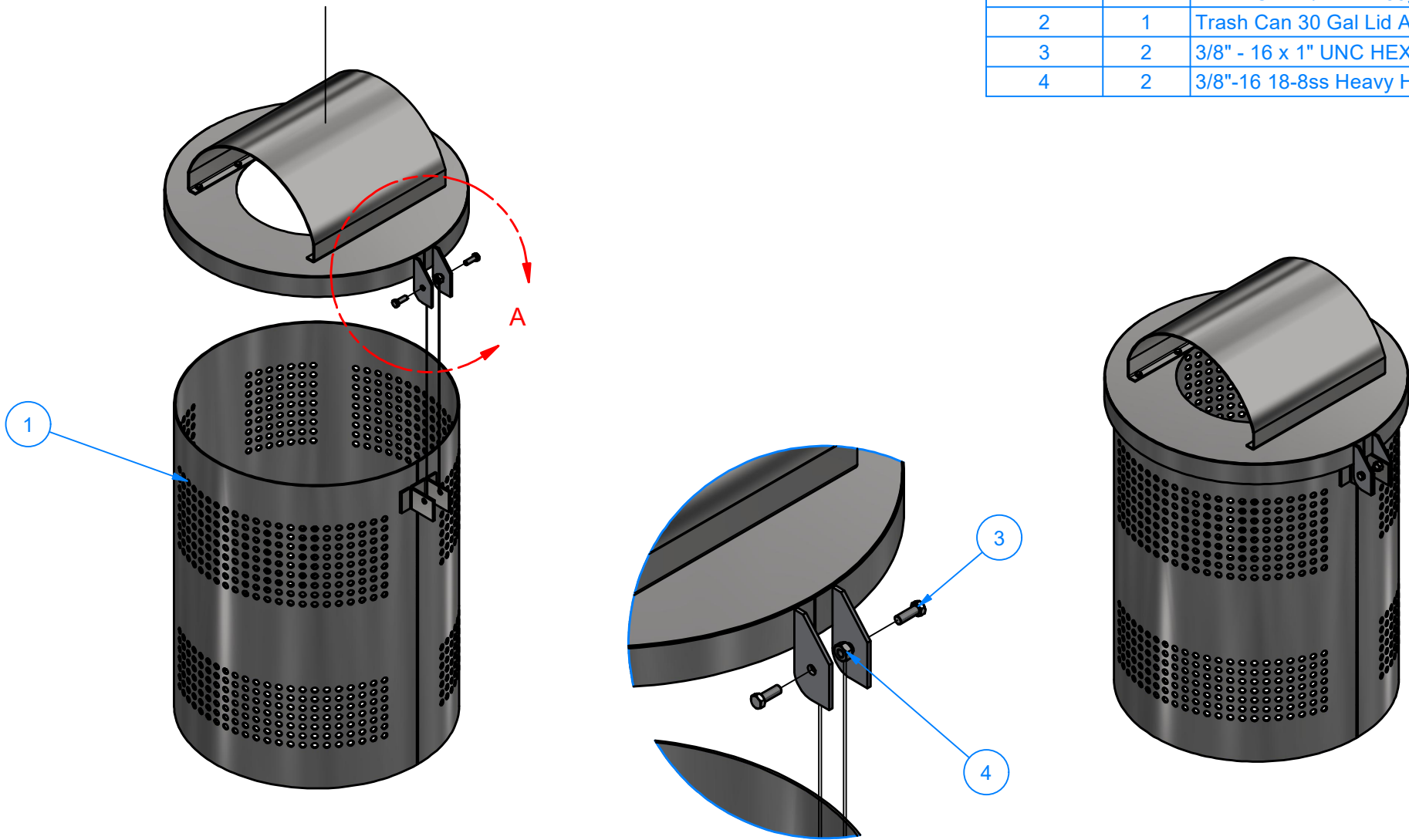
SIZE
A

EST WEIGHT:

SHEET 2 of 12

TS3352-30 - Trash Can 30 Gal

Parts List		
ITEM	QTY	DESCRIPTION
1	1	Trash Can w/ std lid 30gal
2	1	Trash Can 30 Gal Lid Assembly
3	2	3/8" - 16 x 1" UNC HEX SCREW
4	2	3/8"-16 18-8ss Heavy Hex Nut



DETAIL A



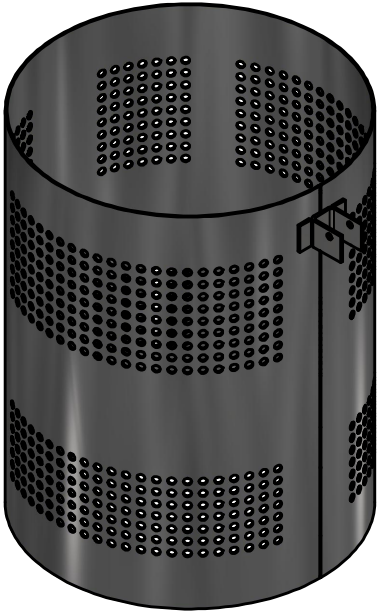
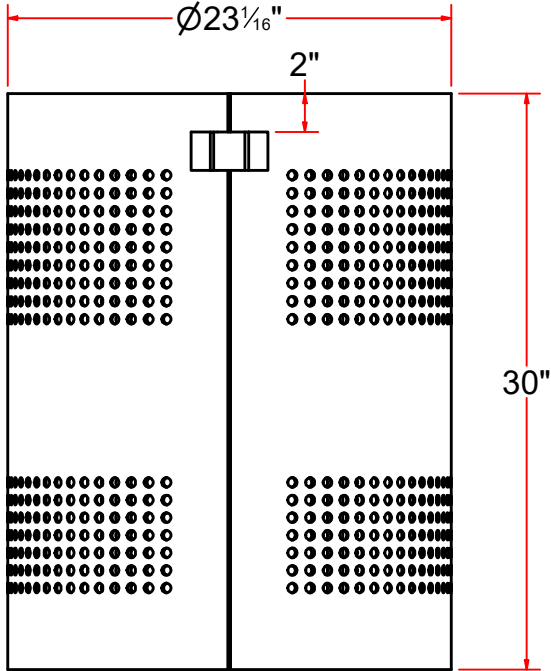
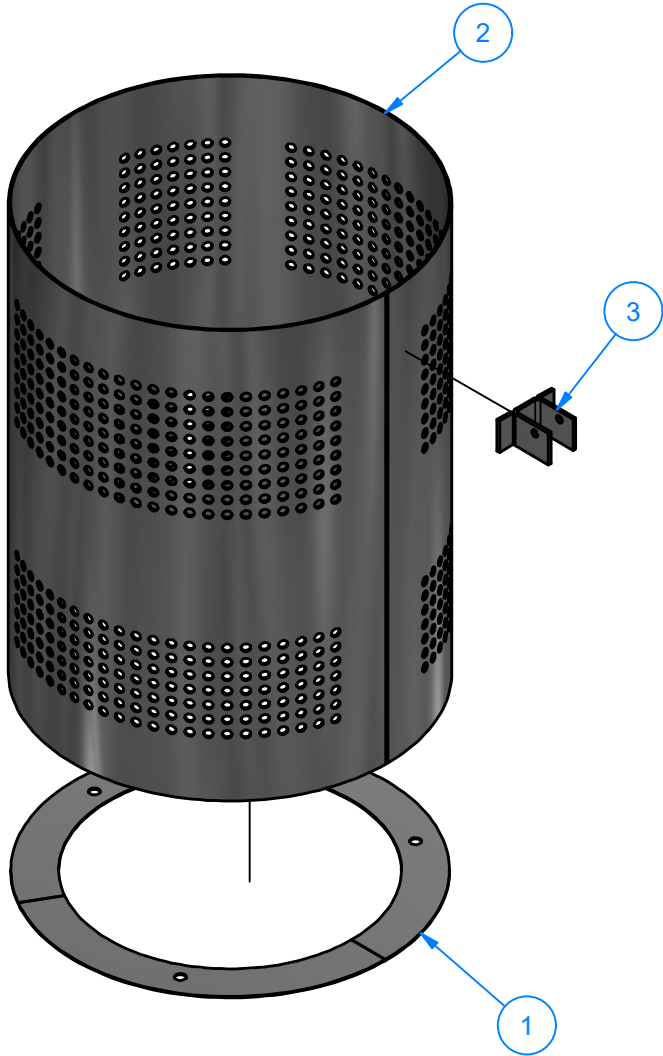
AVW EQUIPMENT CO., INC.
105 S. 9TH AVENUE
MAYWOOD, IL 60153
Tel: 708-343-7738 Fax: 708-343-9065
WWW.AVWEQUIPMENT.COM

- COMPANY PROPRIETARY NOTE -
THIS DRAWING AND ITS DESIGNS ARE PROPERTY OF AVW EQUIPMENT CO. &
IT IS NOT TO BE USED OR REPRODUCED WITHOUT THE PERMISSION FROM AVW CO.

DRAWN BY	Tittu	CUSTOMER: AVW Equipment Co.	
CHECKED BY		PROJECT: TS3352-30 - Trash Can 30 Gal	
QTY		DESCRIPTION: Trash Can 30 Gal	
RELEASE DATE	8/24/2021	PART NUMBER: TS3352-30	REV#
DIMENSION ARE IN INCHES & PROVIDED PRIOR TO SURFACE TREATMENTS, UNLESS NOTED.		SIZE A	EST WEIGHT:
			SHEET 3 of 12

TS3352-30A - Trash Can w/ std lid 30gal

Parts List		
ITEM	QTY	DESCRIPTION
1	1	Bottom Ring #14 Ga 23" O.D. X 18" I.D.
2	1	Perforated Sheet Metal #14 Ga 30" x 72"
3	1	Trash Can Hinge Bracket

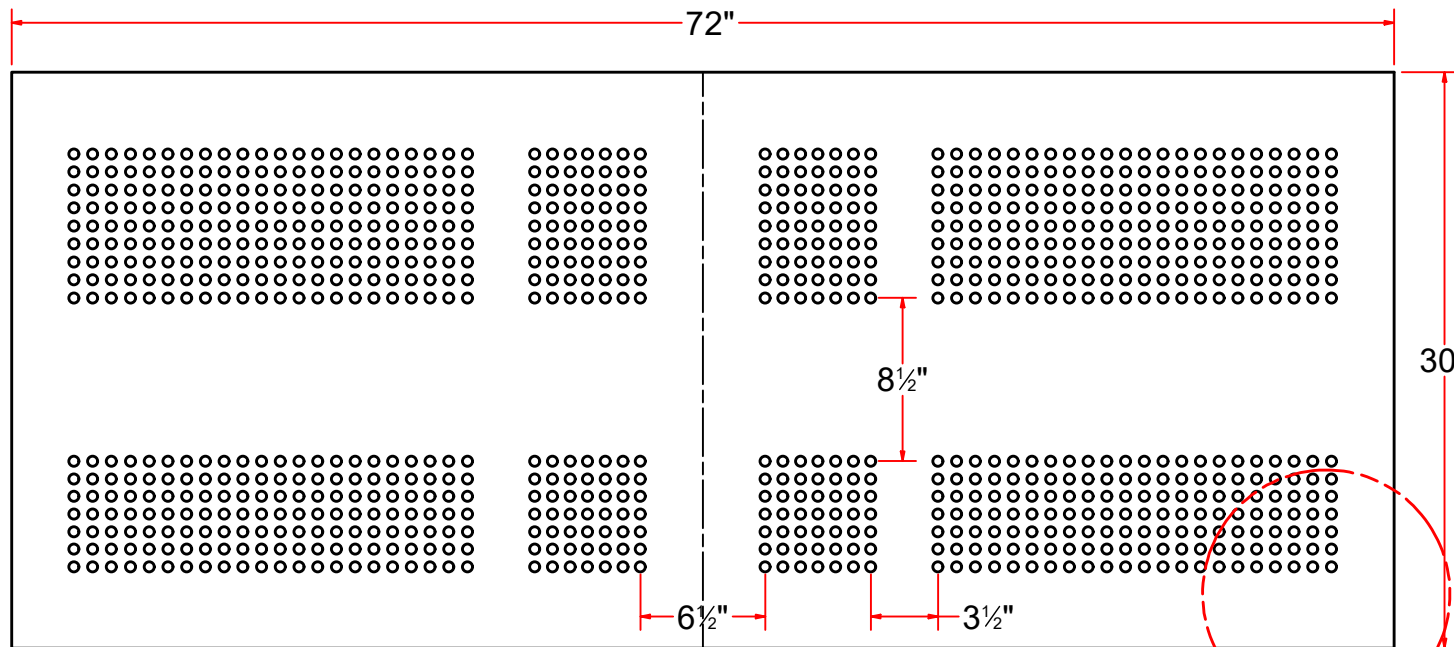
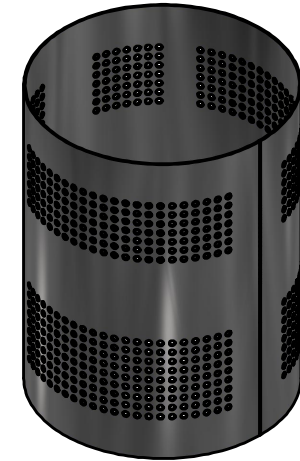


AVW EQUIPMENT CO., INC.
105 S. 9TH AVENUE
MAYWOOD, IL 60153
Tel: 708-343-7738 Fax: 708-343-9065
WWW.AVWEQUIPMENT.COM

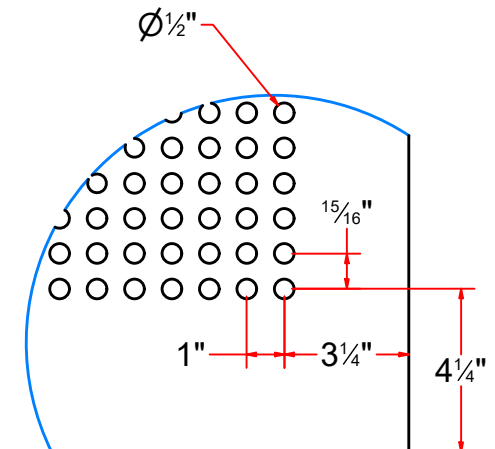
- COMPANY PROPRIETARY NOTE -
THIS DRAWING AND ITS DESIGNS ARE PROPERTY OF AVW EQUIPMENT CO. &
IT IS NOT TO BE USED OR REPRODUCED WITHOUT THE PERMISSION FROM AVW CO.

DRAWN BY	Tittu	CUSTOMER: AVW Equipment Co.	
CHECKED BY		PROJECT: TS3352-30 - Trash Can 30 Gal	
QTY		DESCRIPTION: Trash Can w/ std lid 30gal	
RELEASE DATE	8/24/2021	PART NUMBER: TS3352-30A	REV#
DIMENSION ARE IN INCHES & PROVIDED PRIOR TO SURFACE TREATMENTS, UNLESS NOTED.		SIZE A	EST WEIGHT:
			SHEET 4 of 12

TS3352-30AB - Perforated Sheet Metal #14 Ga 30" x 72"



FLAT PATTERN



DETAIL B



AVW EQUIPMENT CO., INC.
105 S. 9TH AVENUE
MAYWOOD, IL 60153
Tel: 708-343-7738 Fax: 708-343-9065
WWW.AVWEQUIPMENT.COM

- COMPANY PROPRIETARY NOTE -

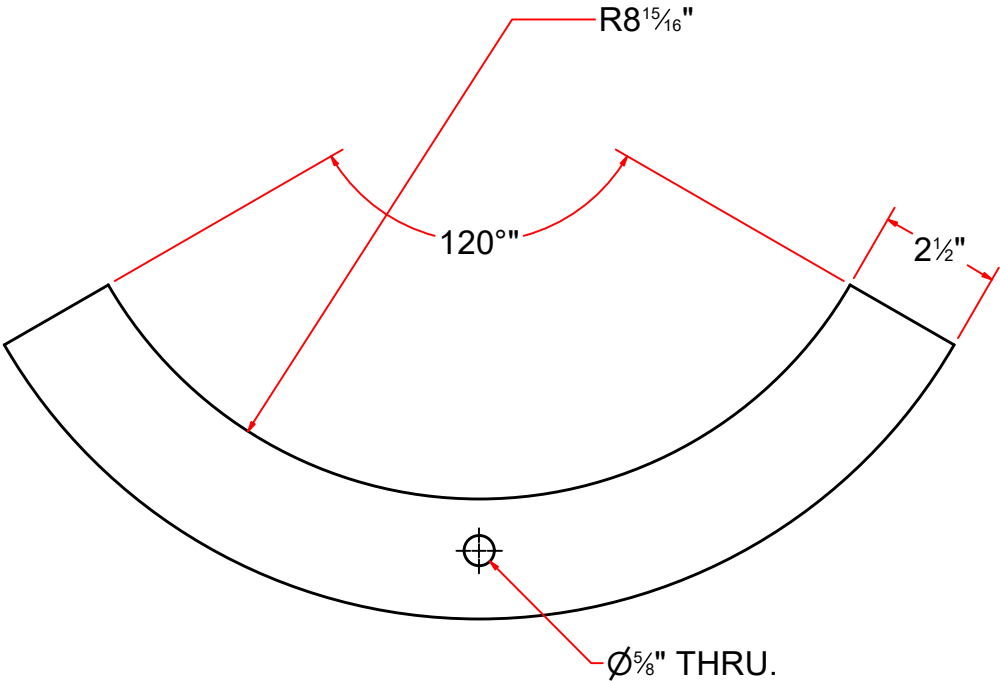
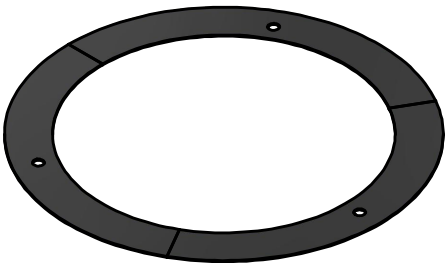
THIS DRAWING AND ITS DESIGNS ARE PROPERTY OF AVW EQUIPMENT CO. & IT IS NOT TO BE USED OR REPRODUCED WITHOUT THE PERMISSION FROM AVW CO.

DRAWN BY	Tittu	CUSTOMER: AVW Equipment Co.	
CHECKED BY		PROJECT: TS3352-30 - Trash Can 30 Gal	
QTY		DESCRIPTION: Perforated Sheet Metal #14 Ga 30" x 72"	
RELEASE DATE	8/24/2021	PART NUMBER: TS3352-30AB	REV#
DIMENSION ARE IN INCHES & PROVIDED PRIOR TO SURFACE TREATMENTS, UNLESS NOTED.		SIZE A	EST WEIGHT:
			SHEET 5 of 12

PATH:L:\Designs\Product Lines\Trash Cans\30-GAL_Trashcan\Parts\Trash Can 30 Gal Perforated Body.ipt

TS3352-30AA - Bottom Ring #14 Ga 23" O.D. X 18" I.D.

Parts List		
ITEM	QTY	DESCRIPTION
1	3	Trash Can #14 Ga Bottom Ring Section



AVW EQUIPMENT CO., INC.
105 S. 9TH AVENUE
MAYWOOD, IL 60153
Tel: 708-343-7738 Fax: 708-343-9065
WWW.AVWEQUIPMENT.COM

- COMPANY PROPRIETARY NOTE -
THIS DRAWING AND ITS DESIGNS ARE PROPERTY OF AVW EQUIPMENT CO. &
IT IS NOT TO BE USED OR REPRODUCED WITHOUT THE PERMISSION FROM AVW CO.

DRAWN BY	Tittu	CUSTOMER: AVW Equipment Co.	
CHECKED BY		PROJECT: TS3352-30 - Trash Can 30 Gal	
QTY		DESCRIPTION: Bottom Ring #14 Ga 23" O.D. X 18" I.D.	
RELEASE DATE	8/24/2021	PART NUMBER: TS3352-30AA	REV#
DIMENSION ARE IN INCHES & PROVIDED PRIOR TO SURFACE TREATMENTS, UNLESS NOTED.		SIZE A	EST WEIGHT:
			SHEET 6 of 12

TS3352-30AC - Trash Can Hinge Bracket

Parts List

ITEM	QTY	DESCRIPTION
1	1	Plate 3/16" x 2" x 6 13/16"
2	2	Plate 3/16" x 2" x 1"

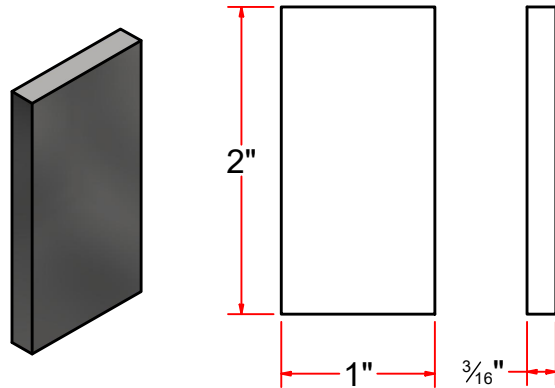
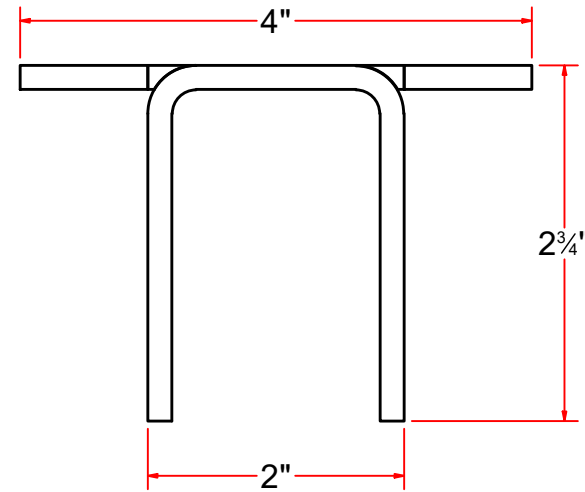
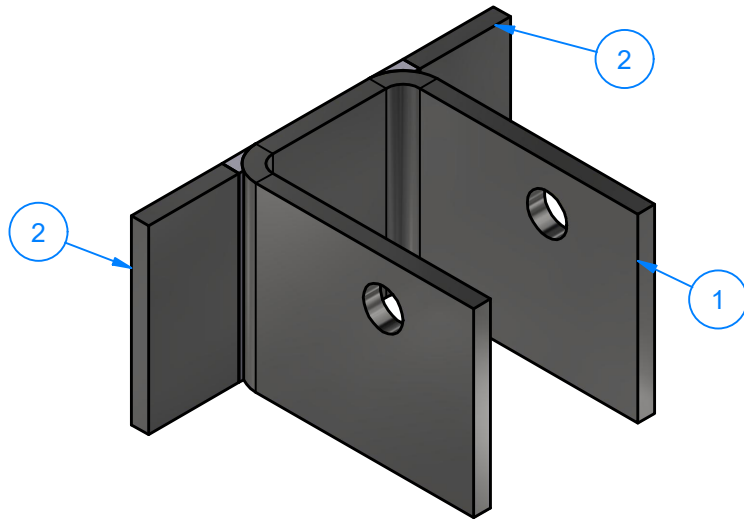


Plate 3/16" x 2" x 1"

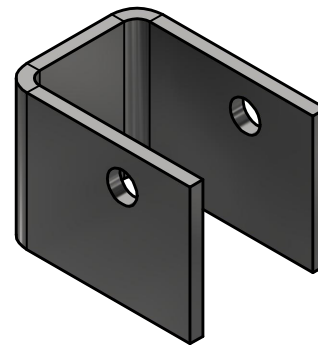
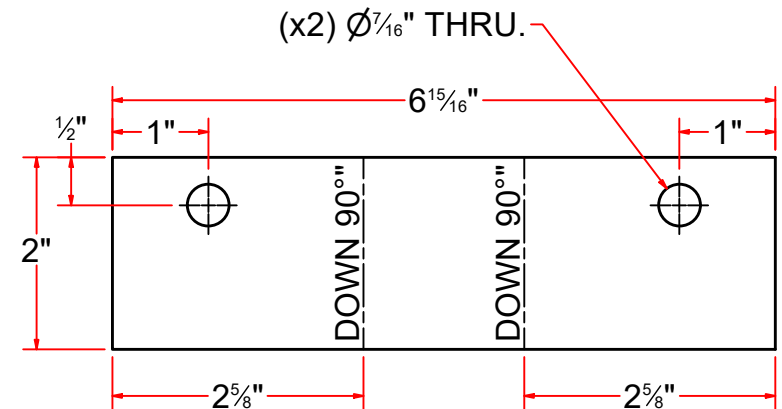


Plate 3/16" x 2" x 6 13/16"



FLAT PATTERN



AVW EQUIPMENT CO., INC.
105 S. 9TH AVENUE
MAYWOOD, IL 60153
Tel: 708-343-7738 Fax: 708-343-9065
WWW.AVWEQUIPMENT.COM

- COMPANY PROPRIETARY NOTE -

THIS DRAWING AND ITS DESIGNS ARE PROPERTY OF AVW EQUIPMENT CO. & IT IS NOT TO BE USED OR REPRODUCED WITHOUT THE PERMISSION FROM AVW CO.

DRAWN BY

Tittu

CUSTOMER: AVW Equipment Co.

CHECKED BY

PROJECT: TS3352-30 - Trash Can 30 Gal

QTY

DESCRIPTION: Trash Can Hinge Bracket

RELEASE DATE

8/24/2021

PART NUMBER: TS3352-30AC

REV#

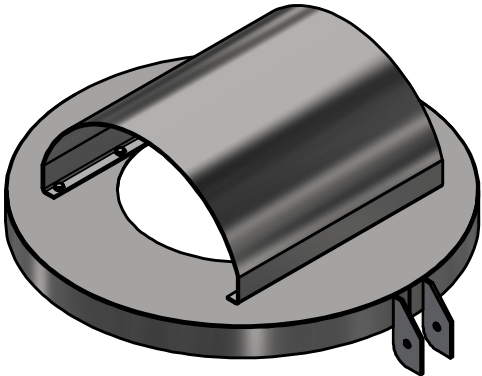
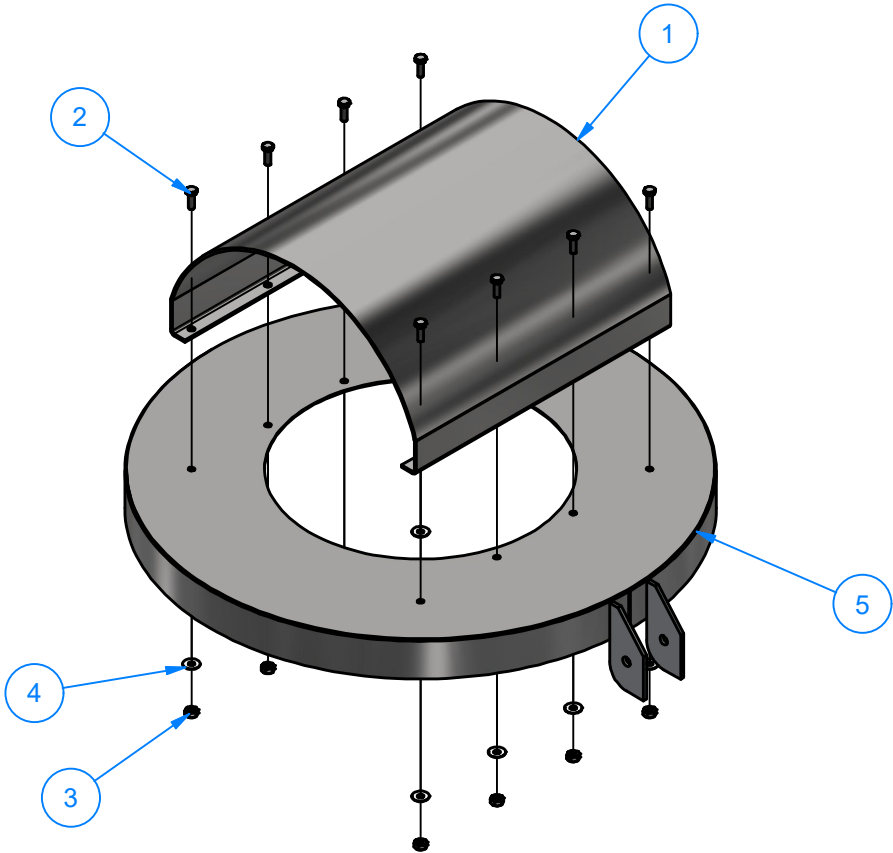
DIMENSION ARE IN INCHES & PROVIDED PRIOR TO SURFACE TREATMENTS, UNLESS NOTED.

SIZE A

EST WEIGHT:

SHEET 7 of 12

TS3352-30B - Trash Can 30 Gal Lid Assembly



Parts List		
ITEM	QTY	DESCRIPTION
1	1	Sheet Metal #14Ga x 24" x 15"
2	8	1/4"-20 UNC x3/4" LG. HEX SCREW
3	8	1/4"-20 HEX NUT
4	8	1/4" FLAT WASHER
5	1	Trash Can 30 Gal Top Lid

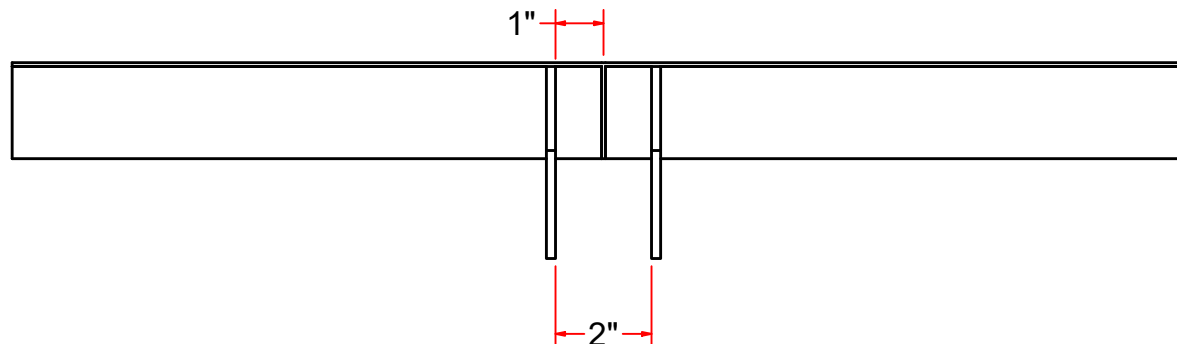
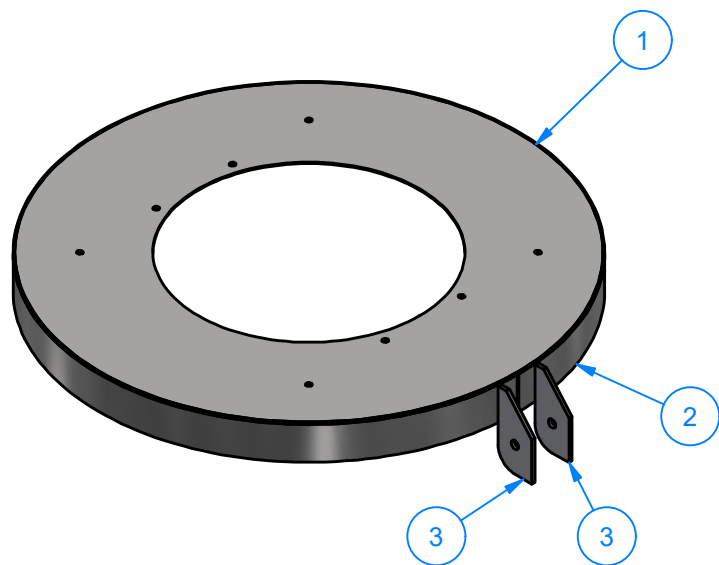


AVW EQUIPMENT CO., INC.
105 S. 9TH AVENUE
MAYWOOD, IL 60153
Tel: 708-343-7738 Fax: 708-343-9065
WWW.AVWEQUIPMENT.COM

- COMPANY PROPRIETARY NOTE -
THIS DRAWING AND ITS DESIGNS ARE PROPERTY OF AVW EQUIPMENT CO. &
IT IS NOT TO BE USED OR REPRODUCED WITHOUT THE PERMISSION FROM AVW CO.

DRAWN BY	Tittu	CUSTOMER: AVW Equipment Co.	
CHECKED BY		PROJECT: TS3352-30 - Trash Can 30 Gal	
QTY		DESCRIPTION: Trash Can 30 Gal Lid Assembly	
RELEASE DATE	8/24/2021	PART NUMBER: TS3352-30B	REV#
DIMENSION ARE IN INCHES & PROVIDED PRIOR TO SURFACE TREATMENTS, UNLESS NOTED.		SIZE A	EST WEIGHT: SHEET 8 of 12

TS3352-30BA - Trash Can 30 Gal Top Lid



Parts List		
ITEM	QTY	DESCRIPTION
1	1	Sheet Metal #14Ga O.D. x I.D.
2	1	TRASH CAN #14 Ga. 30 GAL. TOP LID BAND
3	2	Trash Can Hinge



AVW EQUIPMENT CO., INC.
105 S. 9TH AVENUE
MAYWOOD, IL 60153
Tel: 708-343-7738 Fax: 708-343-9065
WWW.AVWEQUIPMENT.COM

- COMPANY PROPRIETARY NOTE -

THIS DRAWING AND ITS DESIGNS ARE PROPERTY OF AVW EQUIPMENT CO. & IT IS NOT TO BE USED OR REPRODUCED WITHOUT THE PERMISSION FROM AVW CO.

DRAWN BY

Tittu

CUSTOMER: AVW Equipment Co.

CHECKED BY

PROJECT: TS3352-30 - Trash Can 30 Gal

QTY

DESCRIPTION: Trash Can 30 Gal Top Lid

RELEASE DATE

8/24/2021

PART NUMBER: TS3352-30BA

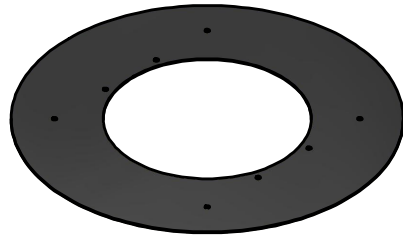
REV#

DIMENSION ARE IN INCHES & PROVIDED PRIOR TO SURFACE TREATMENTS, UNLESS NOTED.

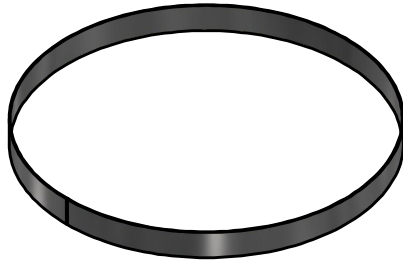
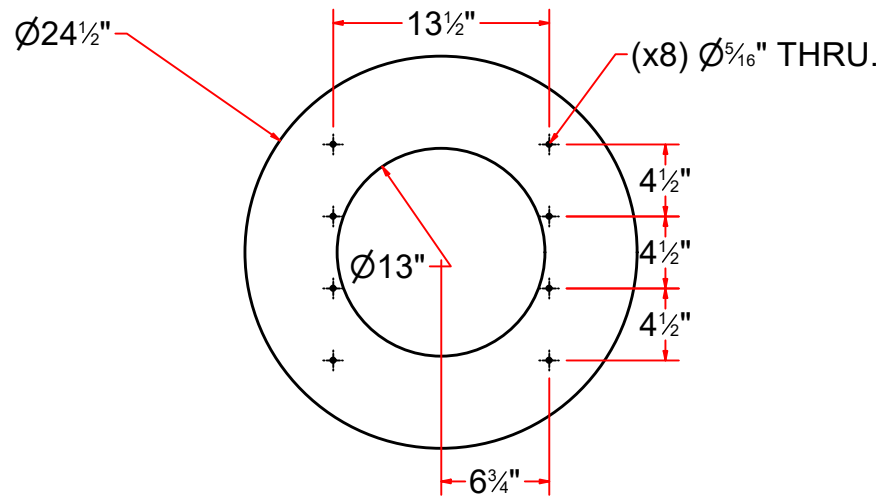
SIZE
A

EST WEIGHT:

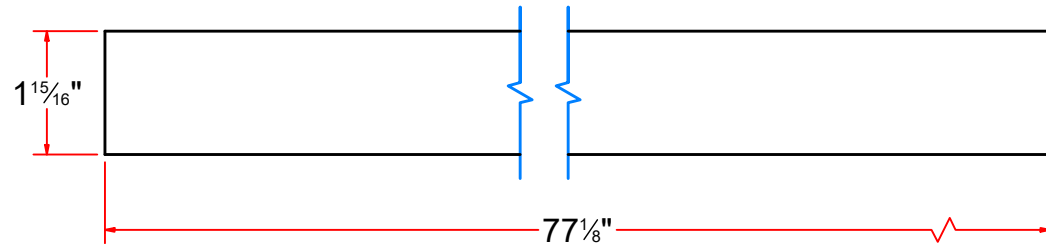
SHEET 9 of 12



Sheet Metal #14Ga O.D. x I.D.



TRASH CAN #14 Ga. 30 GAL. TOP LID BAND



FLAT PATTERN



AVW EQUIPMENT CO., INC.
 105 S. 9TH AVENUE
 MAYWOOD, IL 60153
 Tel: 708-343-7738 Fax: 708-343-9065
 WWW.AVWEQUIPMENT.COM

- COMPANY PROPRIETARY NOTE -

THIS DRAWING AND ITS DESIGNS ARE PROPERTY OF AVW EQUIPMENT CO. &
 IT IS NOT TO BE USED OR REPRODUCED WITHOUT THE PERMISSION FROM AVW CO.

DRAWN BY

Tittu

CUSTOMER: AVW Equipment Co.

CHECKED BY

PROJECT: TS3352-30 - Trash Can 30 Gal

QTY

DESCRIPTION: Sheet Metal #14Ga O.D. x I.D.

RELEASE DATE

8/24/2021

PART NUMBER: TS3352-30BAA

REV#

DIMENSION ARE IN INCHES & PROVIDED PRIOR
 TO SURFACE TREATMENTS, UNLESS NOTED.

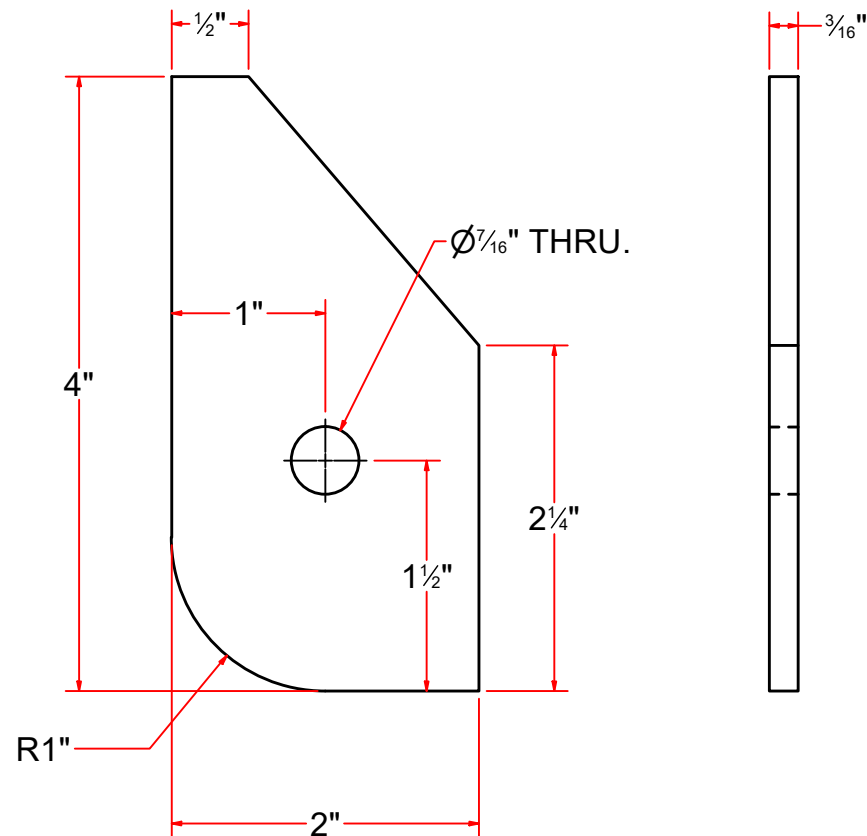
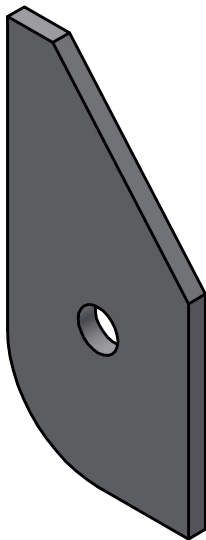
SIZE
A

EST WEIGHT:

SHEET 10 of 12

PATH:L:\Designs\Product Lines\Trash Cans\30-GAL_Trashcan\Parts\Trash Can 30 Gal Top Lid Ring - #14Ga.ipt

TS3352-30BAC - Trash Can Hinge

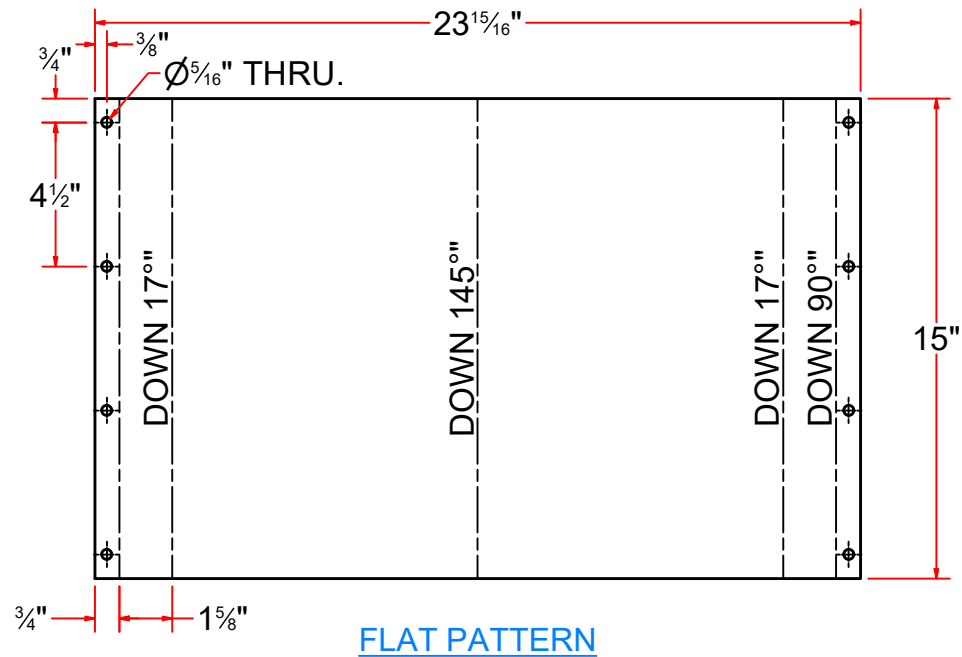
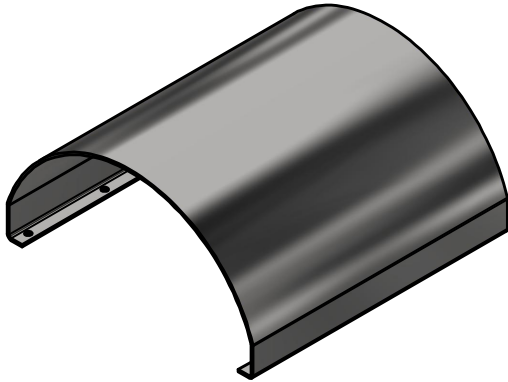


AVW EQUIPMENT CO., INC.
105 S. 9TH AVENUE
MAYWOOD, IL 60153
Tel: 708-343-7738 Fax: 708-343-9065
WWW.AVWEQUIPMENT.COM

- COMPANY PROPRIETARY NOTE -
THIS DRAWING AND ITS DESIGNS ARE PROPERTY OF AVW EQUIPMENT CO. &
IT IS NOT TO BE USED OR REPRODUCED WITHOUT THE PERMISSION FROM AVW CO.

DRAWN BY	Tittu	CUSTOMER: AVW Equipment Co.	
CHECKED BY		PROJECT: TS3352-30 - Trash Can 30 Gal	
QTY		DESCRIPTION: Trash Can Hinge	
RELEASE DATE	8/24/2021	PART NUMBER: TS3352-30BAC	REV#
DIMENSION ARE IN INCHES & PROVIDED PRIOR TO SURFACE TREATMENTS, UNLESS NOTED.		SIZE A	EST WEIGHT:
			SHEET 11 of 12

TS3352-30BB - Sheet Metal #14Ga x 24" x 15"



AVW EQUIPMENT CO., INC.
105 S. 9TH AVENUE
MAYWOOD, IL 60153
Tel: 708-343-7738 Fax: 708-343-9065
WWW.AVWEQUIPMENT.COM

- COMPANY PROPRIETARY NOTE -

THIS DRAWING AND ITS DESIGNS ARE PROPERTY OF AVW EQUIPMENT CO. & IT IS NOT TO BE USED OR REPRODUCED WITHOUT THE PERMISSION FROM AVW CO.

DRAWN BY

Tittu

CUSTOMER: AVW Equipment Co.

CHECKED BY

PROJECT: TS3352-30 - Trash Can 30 Gal

QTY

DESCRIPTION: Sheet Metal #14Ga x 24" x 15"

RELEASE DATE

8/24/2021

PART NUMBER: TS3352-30BB

REV#

DIMENSION ARE IN INCHES & PROVIDED PRIOR TO SURFACE TREATMENTS, UNLESS NOTED.

SIZE
A

EST WEIGHT:

SHEET 12 of 12

PATH:L:\Designs\Product Lines\Trash Cans\30-GAL_Trashcan\Parts\Trash Can 30 Gal Lid Cover.jpt