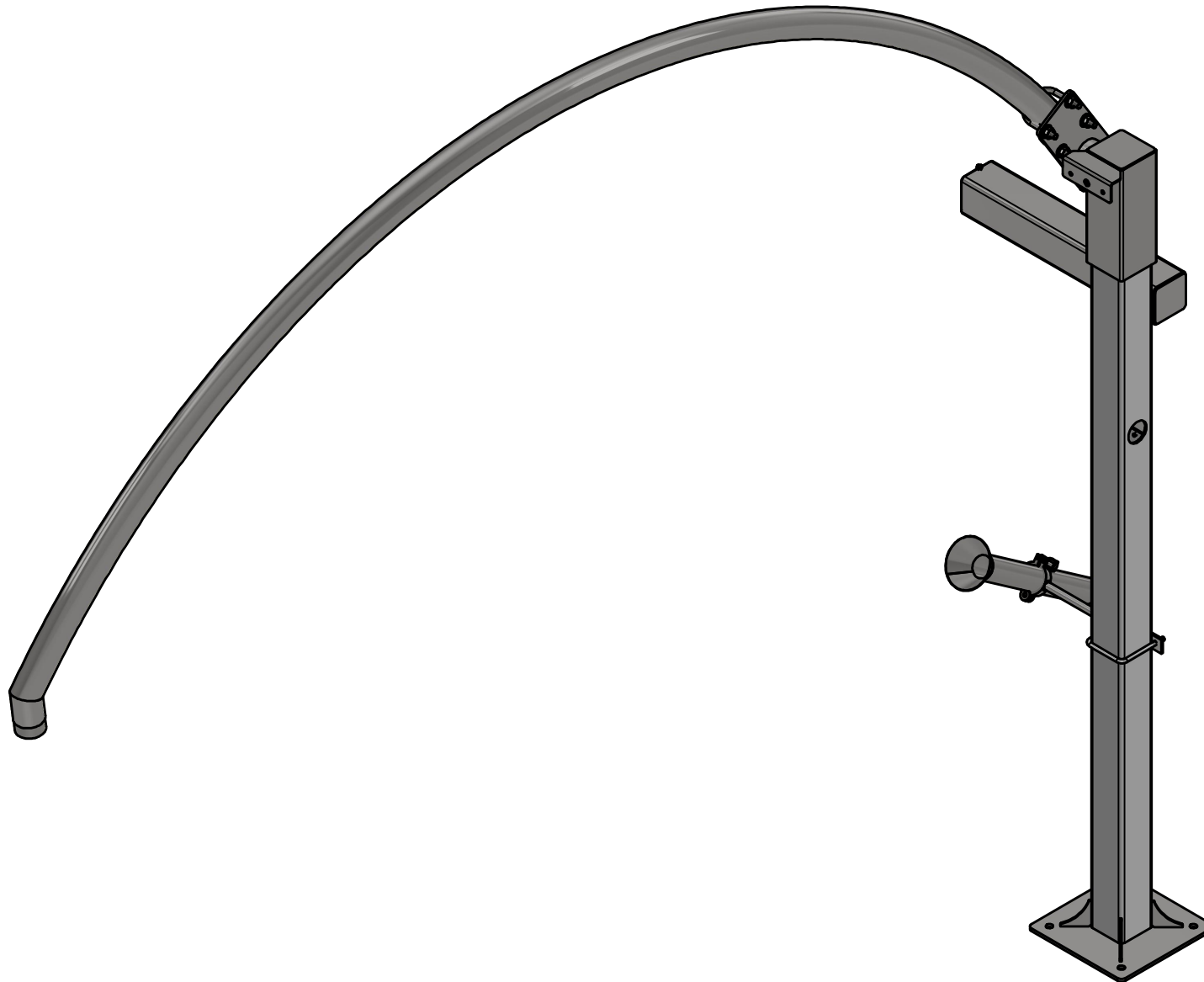

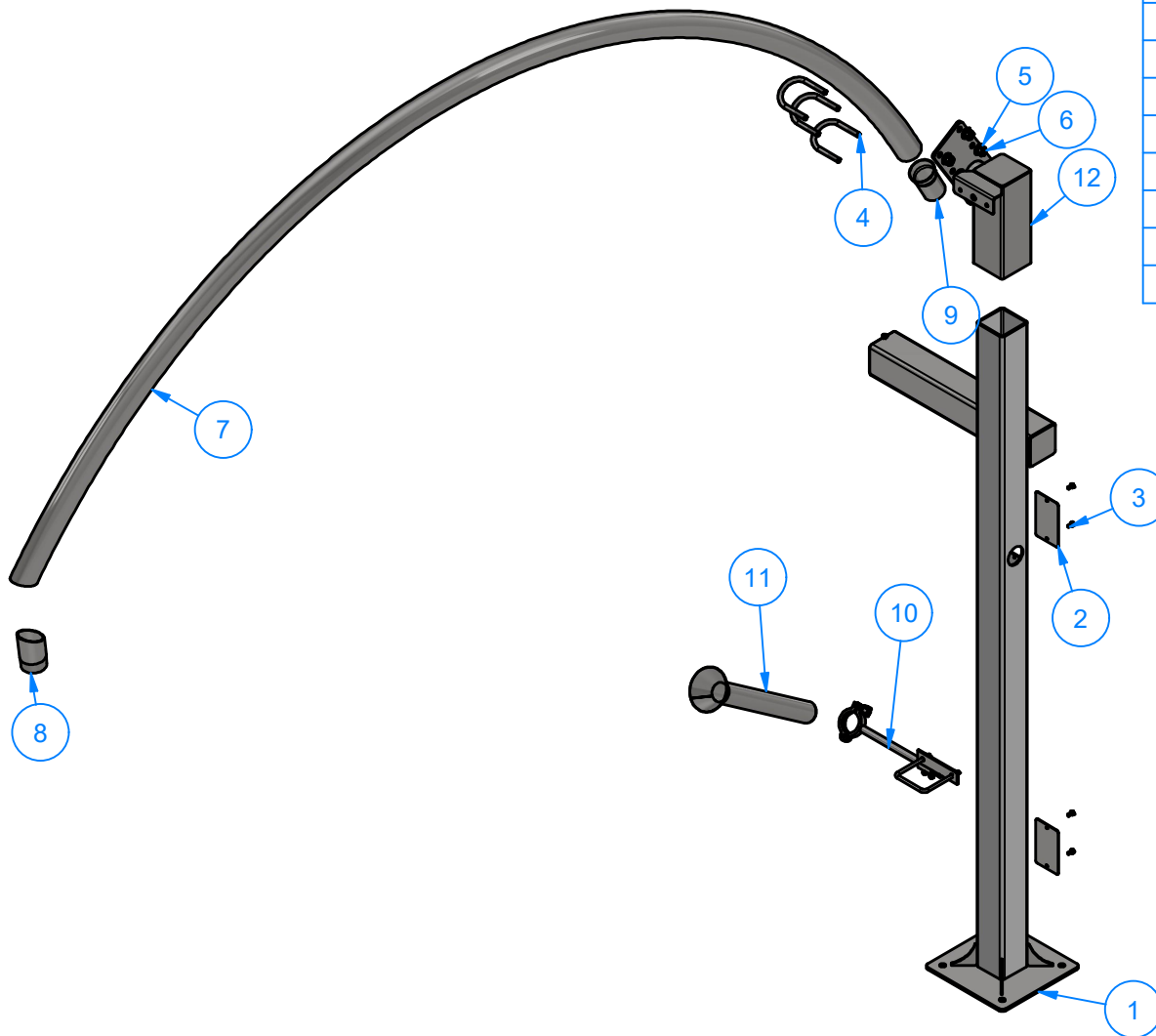


VA3352-16 Single Vacuum Arch



 <div>VIEW114</div> <div>AVW EQUIPMENT CO., INC. 105 S. 9TH AVENUE MAYWOOD, IL 60153 Tel: 708-343-7738 Fax: 708-343-9065 WWW.AVWEQUIPMENT.COM</div>	DRAWN BY	Ljubomir	CUSTOMER:		
	CHECKED BY		PROJECT:		
	QTY		DESCRIPTION: VA3352-17 - Dual Vacuum Arch		
<div>- COMPANY PROPRIETARY NOTE - THIS DRAWING AND ITS DESIGNS ARE PROPERTY OF AVW EQUIPMENT CO. & IT IS NOT TO BE USED OR REPRODUCED WITHOUT THE PERMISSION FROM AVW CO.</div>	RELEASE DATE	1/14/2021	PART NUMBER: VA3352-16 - Single Vacuum Arch		REV#
	DIMENSION ARE IN INCHES & PROVIDED PRIOR TO SURFACE TREATMENTS, UNLESS NOTED.		SIZE A	EST WEIGHT:	SHEET 1 of 17
	PATH:L:\Designs\Product Lines\Vacuum Arches\VA3352-16 Single Vacuum Arch\VA3352-16 - Single Vacuum Arch.iam				



Parts List		
ITEM	QTY	DESCRIPTION
1	1	Single Vacuum Arch Leg 84" LG
2	2	Sheet Metal #14Ga x 3 3/8" x 5 3/4"
3	5	1/4" - 20 x 0.5" UNC Hex Screw
4	3	Round U-Bolt 1/2" D x 3" W x 4 1/2" LG
5	6	1/2" R Flat Washer
6	6	1/2"-13 Stainless Steel Hex Nut
7	1	Pipe 2 1/2" SCH10 x 160" LG
8	1	Hose Adapter w/ 2" Half Coupling
9	1	Tubing 2 1/2" OD x .063" Wall x 4" LG
10	1	VA3352W17 - Dual Claw Holder
11	1	Stainless Steel Vacuum Holster
12	1	VACUUM ARCH SLEEVE - PASSENGER



AVW EQUIPMENT CO., INC.
105 S. 9TH AVENUE
MAYWOOD, IL 60153
Tel: 708-343-7738 Fax: 708-343-9065
WWW.AVWEQUIPMENT.COM

- COMPANY PROPRIETARY NOTE -

THIS DRAWING AND ITS DESIGNS ARE PROPERTY OF AVW EQUIPMENT CO. & IT IS NOT TO BE USED OR REPRODUCED WITHOUT THE PERMISSION FROM AVW CO.

DRAWN BY

Ljubomir

CUSTOMER:

CHECKED BY

PROJECT:

QTY

DESCRIPTION: VA3352-17 - Dual Vacuum Arch

RELEASE DATE

1/14/2021

PART NUMBER: VA3352-16 - Single Vacuum Arch

REV#

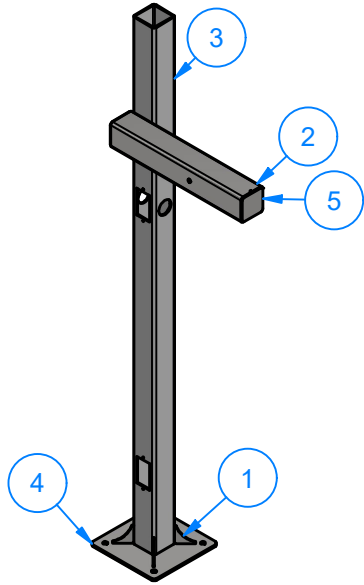
DIMENSION ARE IN INCHES & PROVIDED PRIOR TO SURFACE TREATMENTS, UNLESS NOTED.

SIZE
A

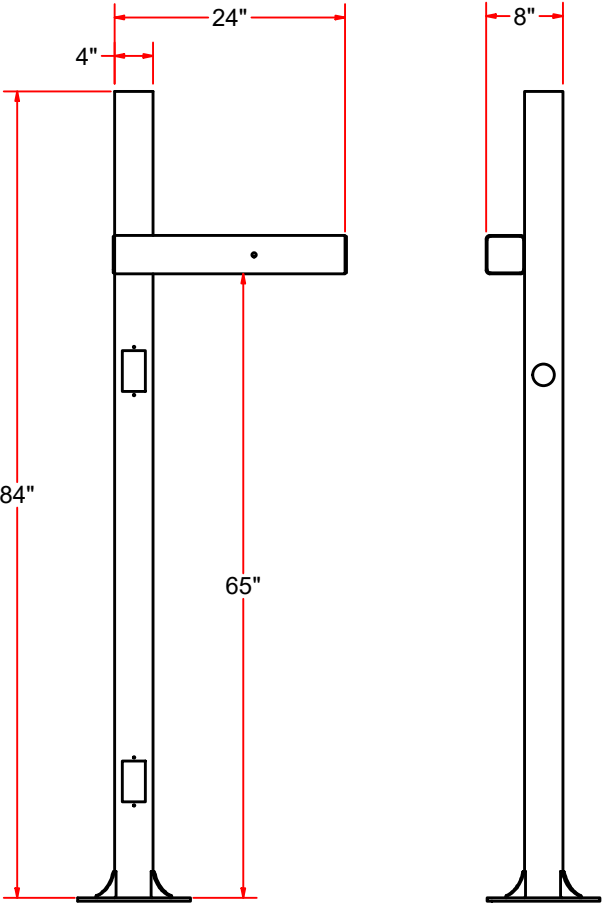
EST WEIGHT:

SHEET 2 of 17

PATH:L:\Designs\Product Lines\Vacuum Arches\VA3352-16 Single Vacuum Arch\VA3352-16 - Single Vacuum Arch.iam



Single Vacuum Arch Leg 84" LG



Parts List		
ITEM	QTY	DESCRIPTION
1	4	Gusset #3/16" x 2-3_4x2-3_4
2	1	Sq. Tube #3/16" x 4" x 24" SS
3	1	Sq. Tube #7Ga. x 4" x 4" x 84" LG.
4	1	PLATE 11_3/4" X 11_3/4 #5_16
5	2	Cap - Sheet Metal #10Ga x 3 7/8" x 3 7/8"



AVW EQUIPMENT CO., INC.
105 S. 9TH AVENUE
MAYWOOD, IL 60153
Tel: 708-343-7738 Fax: 708-343-9065
WWW.AVWEQUIPMENT.COM

- COMPANY PROPRIETARY NOTE -
THIS DRAWING AND ITS DESIGNS ARE PROPERTY OF AVW EQUIPMENT CO. &
IT IS NOT TO BE USED OR REPRODUCED WITHOUT THE PERMISSION FROM AVW CO.

DRAWN BY	Ljubomir	CUSTOMER:	
CHECKED BY		PROJECT:	
QTY		DESCRIPTION: Single Vacuum Arch Leg 84" LG	
RELEASE DATE	1/14/2021	PART NUMBER: VA3352A-16 - 84in Vacuum Leg Assembly	REV#
DIMENSION ARE IN INCHES & PROVIDED PRIOR TO SURFACE TREATMENTS, UNLESS NOTED.		SIZE A	EST WEIGHT: SHEET 3 of 17

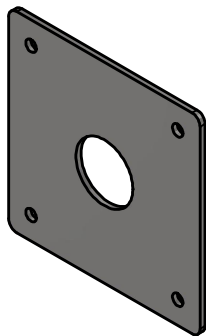
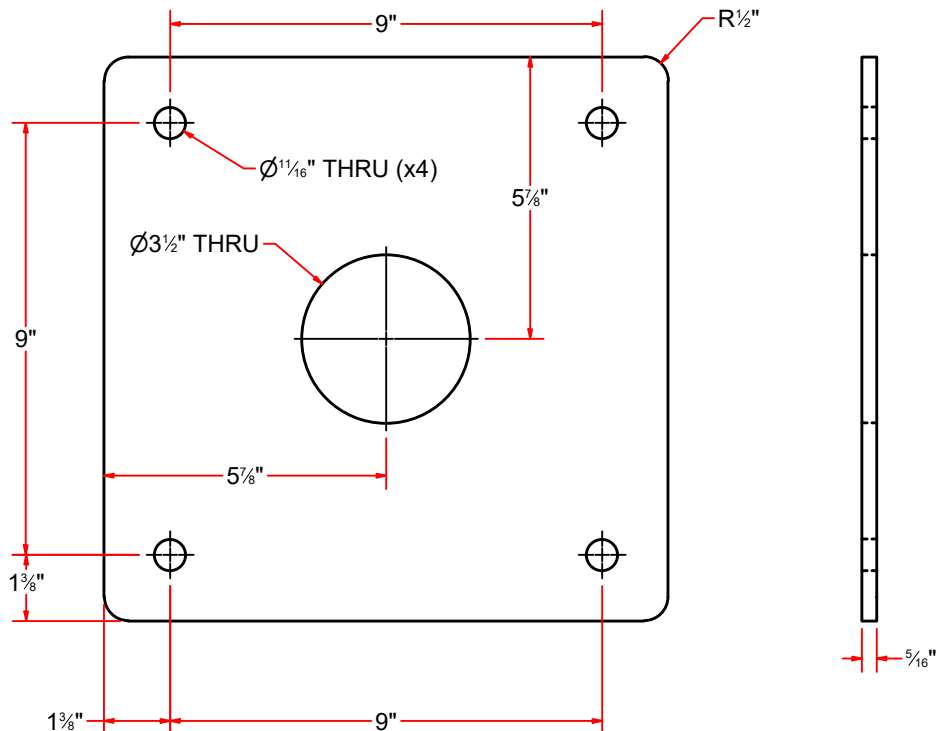
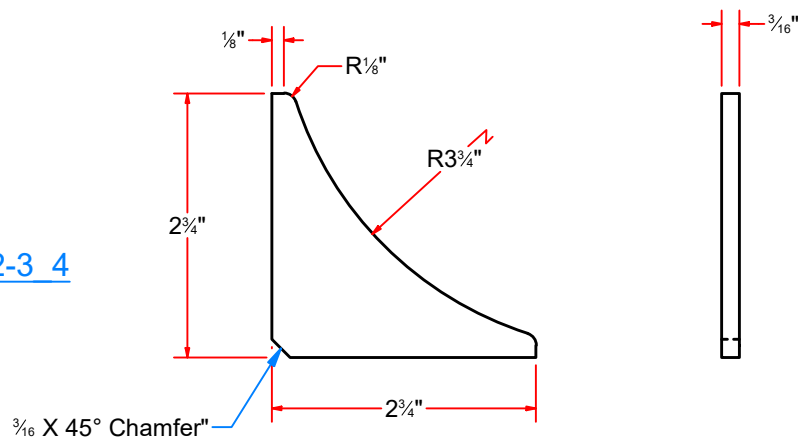


PLATE 11 3/4" X 11 3/4 #5 16



Gusset #3/16" x 2-3 4x2-3 4



AVW EQUIPMENT CO., INC.
105 S. 9TH AVENUE
MAYWOOD, IL 60153
Tel: 708-343-7738 Fax: 708-343-9065
WWW.AVWEQUIPMENT.COM

- COMPANY PROPRIETARY NOTE -

THIS DRAWING AND ITS DESIGNS ARE PROPERTY OF AVW EQUIPMENT CO. & IT IS NOT TO BE USED OR REPRODUCED WITHOUT THE PERMISSION FROM AVW CO.

DRAWN BY

Ljubomir

CUSTOMER:

CHECKED BY

PROJECT:

QTY

DESCRIPTION: PLATE 11_3/4" X 11_3/4 #5_16

RELEASE DATE

1/14/2021

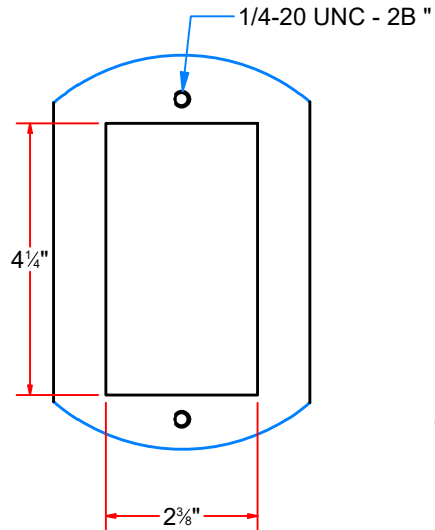
PART NUMBER: (11-3_4 X 11-3_4) & (H 5_8 X 4) # 5_16 REV#

DIMENSION ARE IN INCHES & PROVIDED PRIOR TO SURFACE TREATMENTS, UNLESS NOTED.

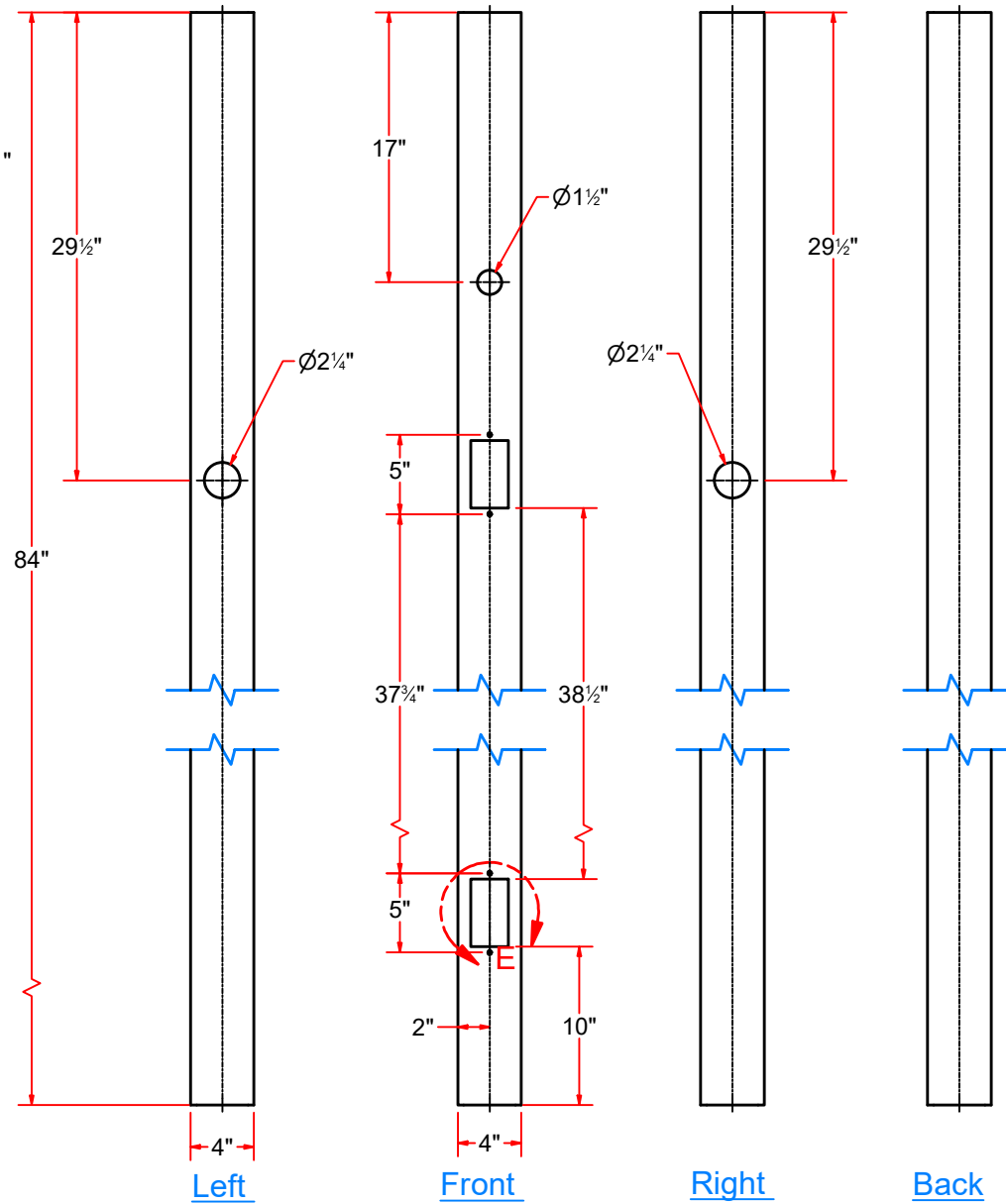
SIZE A

EST WEIGHT:

SHEET 4 of 17



DETAIL E



Sq. Tube #7Ga. x 4" x 4" x 84" LG.



AVW EQUIPMENT CO., INC.
105 S. 9TH AVENUE
MAYWOOD, IL 60153
Tel: 708-343-7738 Fax: 708-343-9065
WWW.AVWEQUIPMENT.COM

- COMPANY PROPRIETARY NOTE -

THIS DRAWING AND ITS DESIGNS ARE PROPERTY OF AVW EQUIPMENT CO. & IT IS NOT TO BE USED OR REPRODUCED WITHOUT THE PERMISSION FROM AVW CO.

DRAWN BY

Ljubomir

CUSTOMER:

CHECKED BY

PROJECT:

QTY

DESCRIPTION: Sq. Tube #7Ga. x 4" x 4" x 84" LG.

RELEASE DATE

1/14/2021

PART NUMBER: VA3352A-17 - Part001

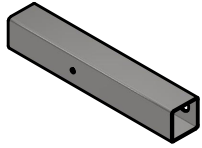
REV#

DIMENSION ARE IN INCHES & PROVIDED PRIOR TO SURFACE TREATMENTS, UNLESS NOTED.

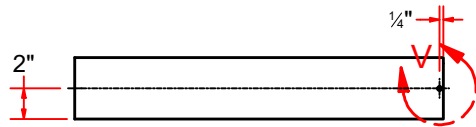
SIZE
A

EST WEIGHT:

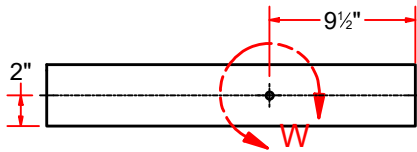
SHEET 5 of 17



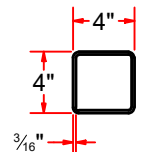
Sq. Tube #3/16" x 4" x 24" SS



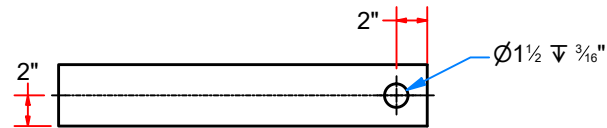
Top



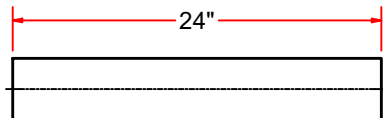
Front



Right

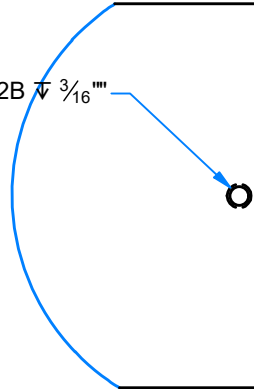


Back



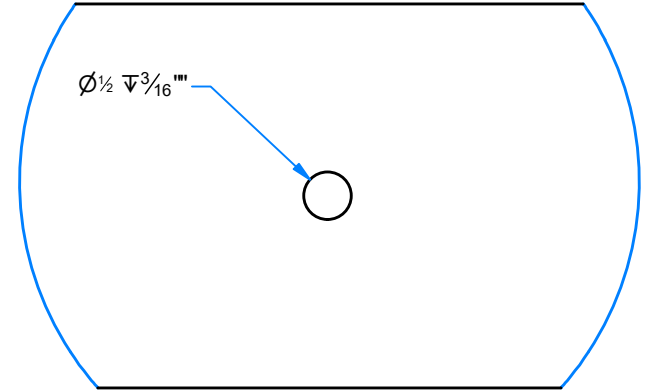
Bottom

1/4-20 UNC - 2B $\nabla \frac{3}{16}$ "



DETAIL V

$\varnothing 1\frac{1}{2} \nabla \frac{3}{16}$ "



DETAIL W



AVW EQUIPMENT CO., INC.
105 S. 9TH AVENUE
MAYWOOD, IL 60153
Tel: 708-343-7738 Fax: 708-343-9065
WWW.AVWEQUIPMENT.COM

- COMPANY PROPRIETARY NOTE -

THIS DRAWING AND ITS DESIGNS ARE PROPERTY OF AVW EQUIPMENT CO. & IT IS NOT TO BE USED OR REPRODUCED WITHOUT THE PERMISSION FROM AVW CO.

DRAWN BY

Ljubomir

CUSTOMER:

CHECKED BY

PROJECT:

QTY

DESCRIPTION: Sq. Tube #3/16" x 4" x 24" SS

RELEASE DATE

1/14/2021

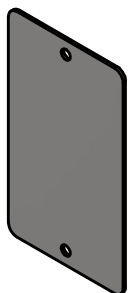
PART NUMBER: Top Crossbar - Sq. Tube #3_16 x 4 x 24 SS REV#

DIMENSION ARE IN INCHES & PROVIDED PRIOR TO SURFACE TREATMENTS, UNLESS NOTED.

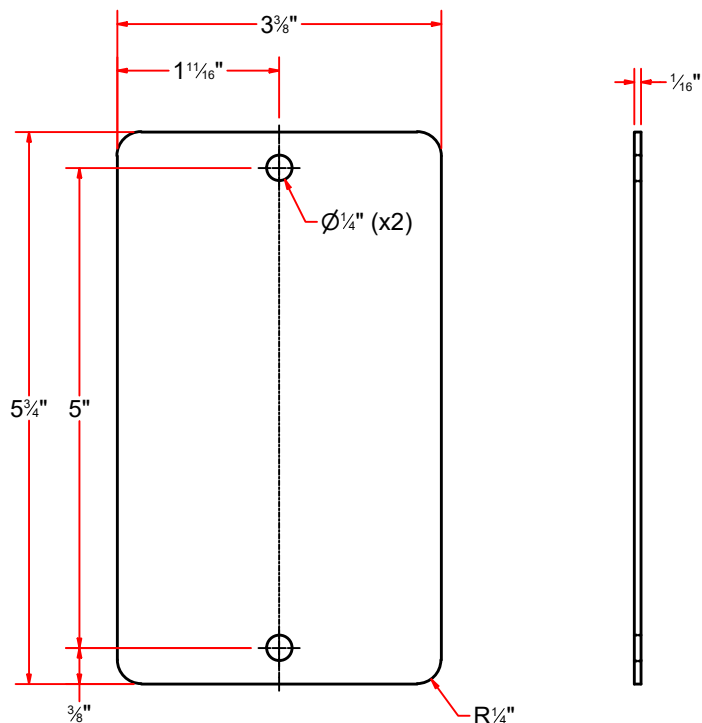
SIZE
A

EST WEIGHT:

SHEET 6 of 17



Sheet Metal #14Ga x 3 3/8" x 5 3/4"



AVW EQUIPMENT CO., INC.
105 S. 9TH AVENUE
MAYWOOD, IL 60153
Tel: 708-343-7738 Fax: 708-343-9065
WWW.AVWEQUIPMENT.COM

- COMPANY PROPRIETARY NOTE -

THIS DRAWING AND ITS DESIGNS ARE PROPERTY OF AVW EQUIPMENT CO. & IT IS NOT TO BE USED OR REPRODUCED WITHOUT THE PERMISSION FROM AVW CO.

DRAWN BY

Ljubomir

CUSTOMER:

CHECKED BY

PROJECT:

QTY

DESCRIPTION: Sheet Metal #14Ga x 3 3/8" x 5 3/4"

RELEASE
DATE

1/14/2021

PART NUMBER: Sheet Metal #14Ga x 3 3_8 x 5 3_4

REV#

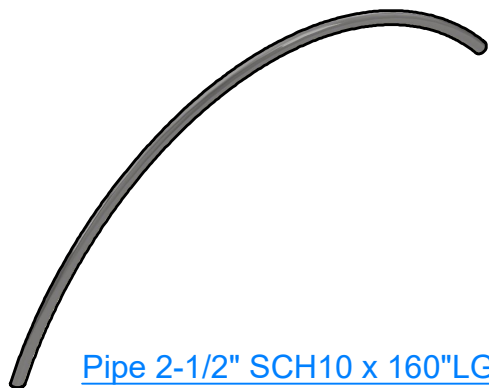
DIMENSION ARE IN INCHES & PROVIDED PRIOR
TO SURFACE TREATMENTS, UNLESS NOTED.

SIZE
A

EST WEIGHT:

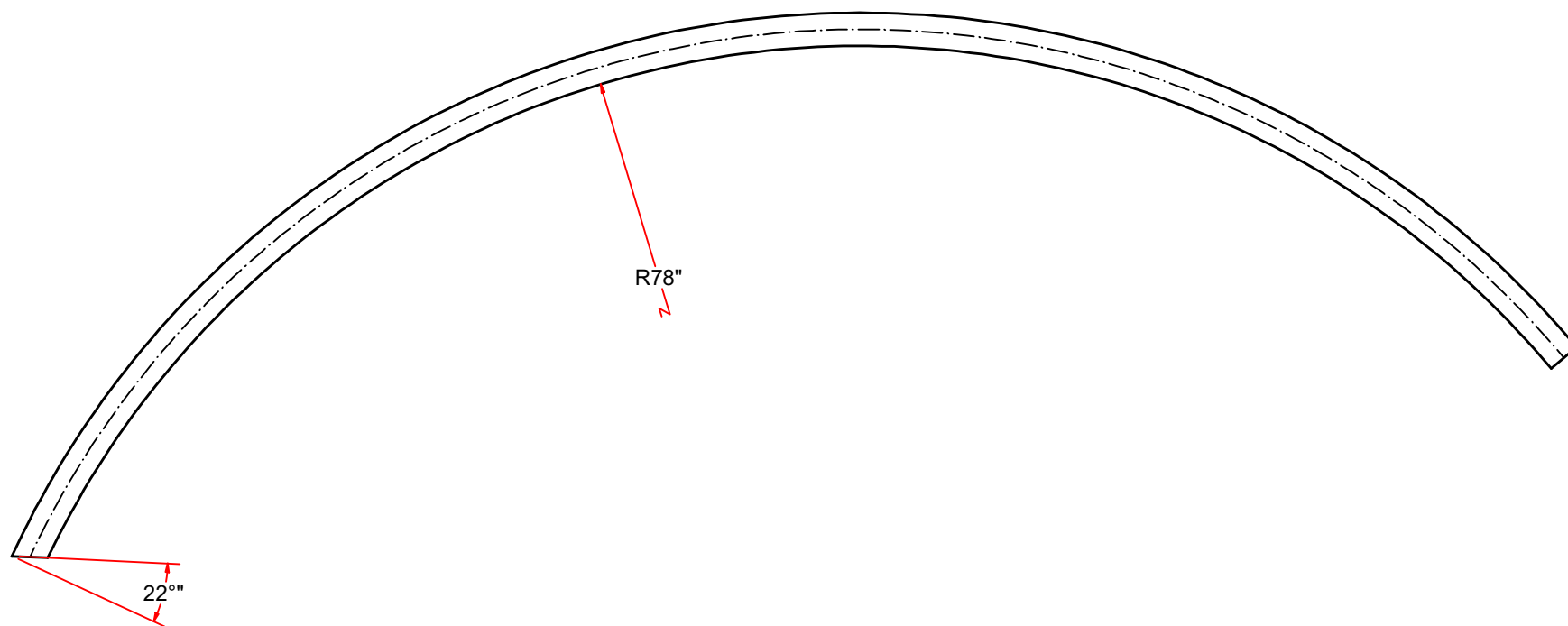
SHEET 7 of 17

PATH:L:\Libraries\AVW Components\Plates\Sheet Metal #14Ga x 3 3_8 x 5 3_4.ipt



Flat Pipe is 160in LG.

After bent pipe is cut 22 degrees towards inside to make sure it matches the hose adapter



AVW EQUIPMENT CO., INC.
105 S. 9TH AVENUE
MAYWOOD, IL 60153
Tel: 708-343-7738 Fax: 708-343-9065
WWW.AVWEQUIPMENT.COM

- COMPANY PROPRIETARY NOTE -

THIS DRAWING AND ITS DESIGNS ARE PROPERTY OF AVW EQUIPMENT CO. & IT IS NOT TO BE USED OR REPRODUCED WITHOUT THE PERMISSION FROM AVW CO.

DRAWN BY

Ljubomir

CUSTOMER:

CHECKED BY

PROJECT:

QTY

DESCRIPTION: Pipe 2 1/2" SCH10 x 160" LG

RELEASE DATE

1/14/2021

PART NUMBER: Pipe 2 1_2 SCH10 x 160 LG

REV#

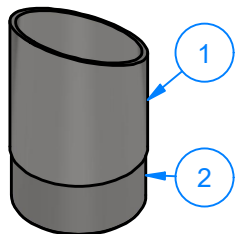
DIMENSION ARE IN INCHES & PROVIDED PRIOR TO SURFACE TREATMENTS, UNLESS NOTED.

SIZE
A

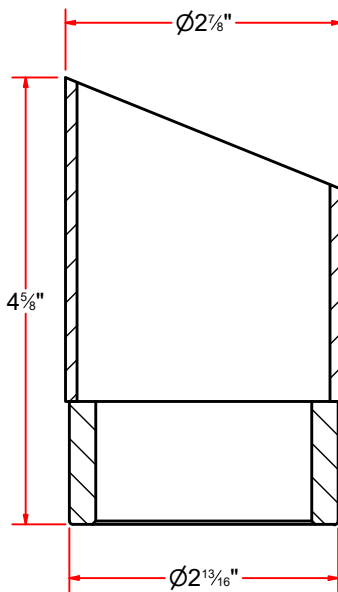
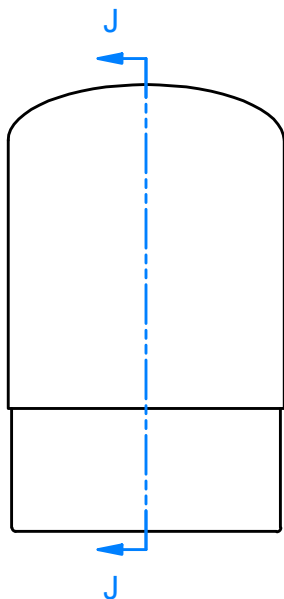
EST WEIGHT:

SHEET 8 of 17

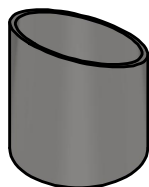
PATH:L:\Libraries\AVW Components\Pipes\Vacuum Pipes\Pipe 2 1_2 SCH10 x 160 LG.ipt



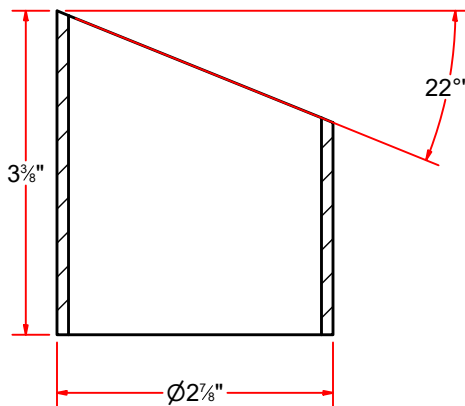
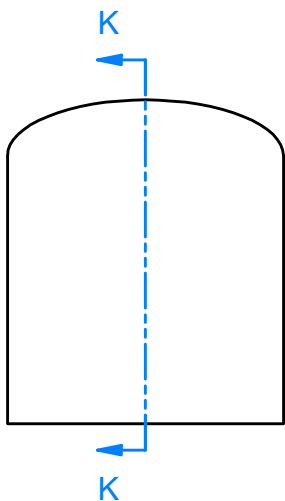
Hose Adapter with 2" Coupling



SECTION J-J



2-1/2" Pipe, Sch10 x 3-3/8

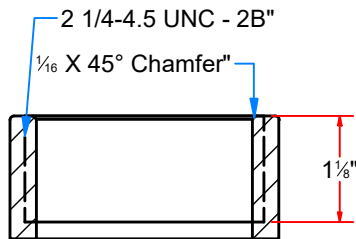
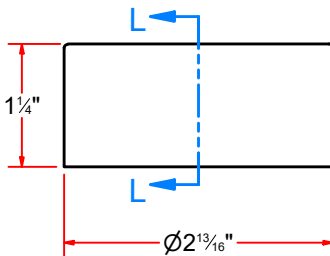


SECTION K-K

Parts List		
ITEM	QTY	DESCRIPTION
1	1	2 1/2" Pipe Sch10 x 3 3/8" LG.
2	1	2" Half Coupling



2" Half Coupling



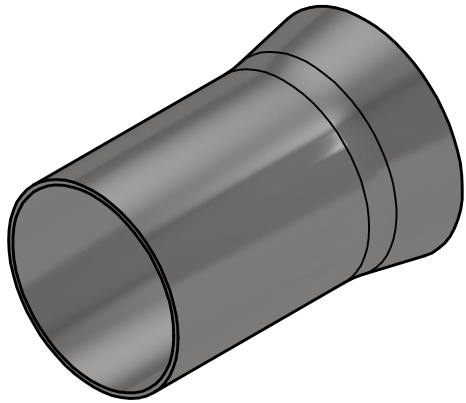
SECTION L-L



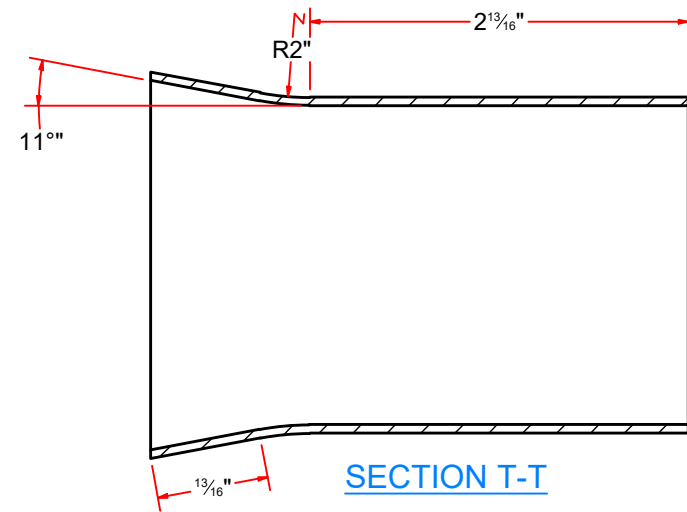
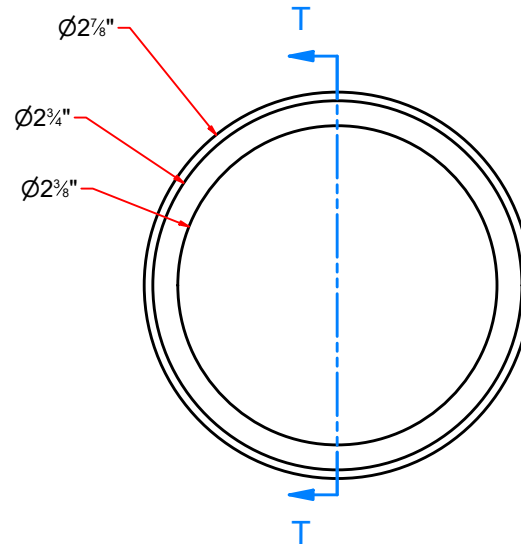
AVW EQUIPMENT CO., INC.
105 S. 9TH AVENUE
MAYWOOD, IL 60153
Tel: 708-343-7738 Fax: 708-343-9065
WWW.AVWEQUIPMENT.COM

- COMPANY PROPRIETARY NOTE -
THIS DRAWING AND ITS DESIGNS ARE PROPERTY OF AVW EQUIPMENT CO. &
IT IS NOT TO BE USED OR REPRODUCED WITHOUT THE PERMISSION FROM AVW CO.

DRAWN BY	Ljubomir	CUSTOMER:	
CHECKED BY		PROJECT:	
QTY		DESCRIPTION: Hose Adapter w/ 2" Half Coupling	
RELEASE DATE	1/14/2021	PART NUMBER: 2in Hose Adapter with Coupling	REV#
DIMENSION ARE IN INCHES & PROVIDED PRIOR TO SURFACE TREATMENTS, UNLESS NOTED.		SIZE A	EST WEIGHT:
			SHEET 9 of 17



Pipe Reducer -> 2-1/2" to 2" Pipe



AVW EQUIPMENT CO., INC.
105 S. 9TH AVENUE
MAYWOOD, IL 60153
Tel: 708-343-7738 Fax: 708-343-9065
WWW.AVWEQUIPMENT.COM

- COMPANY PROPRIETARY NOTE -

THIS DRAWING AND ITS DESIGNS ARE PROPERTY OF AVW EQUIPMENT CO. &
IT IS NOT TO BE USED OR REPRODUCED WITHOUT THE PERMISSION FROM AVW CO.

DRAWN BY

Ljubomir

CUSTOMER:

CHECKED BY

PROJECT:

QTY

DESCRIPTION: Tubing 2 1/2" OD x .063" Wall x 4" LG

RELEASE
DATE

1/14/2021

PART NUMBER: 2-1_2 Pipe Hose Reducer

REV#

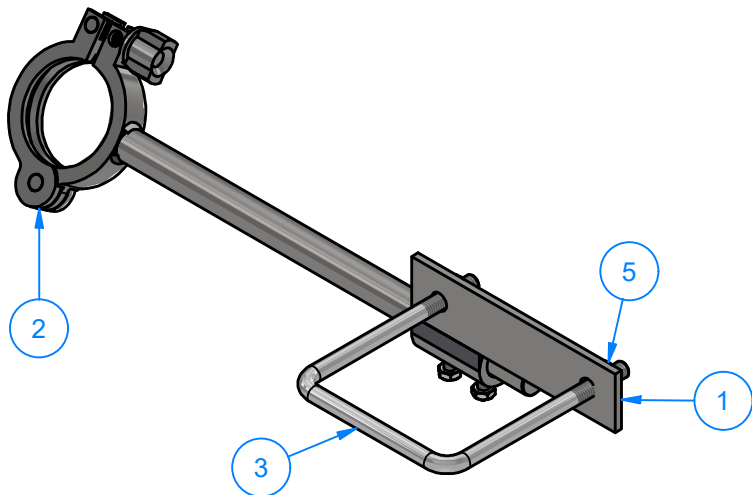
DIMENSION ARE IN INCHES & PROVIDED PRIOR
TO SURFACE TREATMENTS, UNLESS NOTED.

SIZE
A

EST WEIGHT:

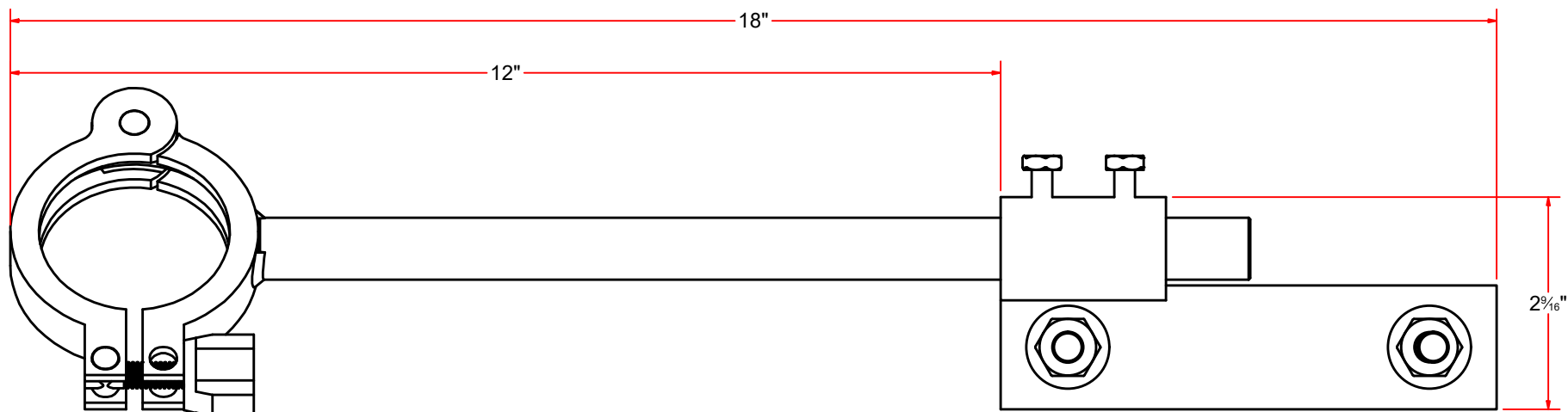
SHEET 10 of 17

PATH:L:\Libraries\AVW Components\Vacuum Pipe Reducers\2-1_2 Pipe Hose Reducer.ipt



Parts List		
ITEM	QTY	DESCRIPTION
1	1	VA3352W16-001 - Dual Claw Holder U Bolt Plate
2	1	Claw Holder Arm
3	1	Square U Bolt D 3/8" x 4" x 5" LG
4	2	3/8" R Flat Washer
5	2	3/8"-16 18-8ss Heavy Hex Nut

VA3352W17 - Dual Claw Holder



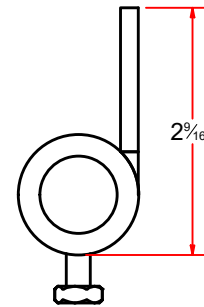
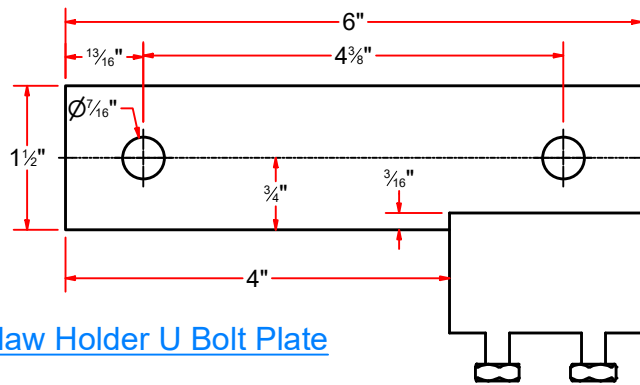
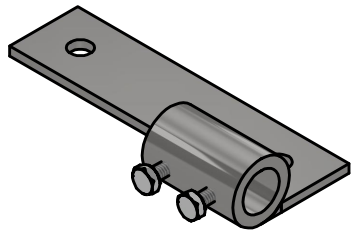
AVW EQUIPMENT CO., INC.
105 S. 9TH AVENUE
MAYWOOD, IL 60153
Tel: 708-343-7738 Fax: 708-343-9065
WWW.AVWEQUIPMENT.COM

- COMPANY PROPRIETARY NOTE -

THIS DRAWING AND ITS DESIGNS ARE PROPERTY OF AVW EQUIPMENT CO. & IT IS NOT TO BE USED OR REPRODUCED WITHOUT THE PERMISSION FROM AVW CO.

DRAWN BY	Ljubomir	CUSTOMER:	
CHECKED BY		PROJECT:	
QTY		DESCRIPTION: R-VA3352W16 - Dual Claw Holder	
RELEASE DATE	1/14/2021	PART NUMBER: R-VA3352W16 - Single Claw Holder	REV#
DIMENSION ARE IN INCHES & PROVIDED PRIOR TO SURFACE TREATMENTS, UNLESS NOTED.		SIZE A	EST WEIGHT:
			SHEET 11 of 17

PATH:L:\Libraries\Productivity\Vacuum Arches\Claw Holders\VA3352W17_VA3352W16 - Claw Holster\R-VA3352W16 - Single Claw Holder.iam



Parts List		
ITEM	QTY	DESCRIPTION
1	1	Plate #3/16" x 1 1/2" x 6"
2	2	Rod O.D. 1 1/4" x I.D. 13/16" x 2" LG
3	4	1/4" - 20 x 0.5" UNC Hex Screw

VA3352W16-001 - Dual Claw Holder U Bolt Plate

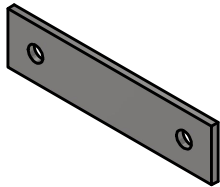
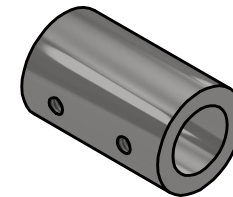
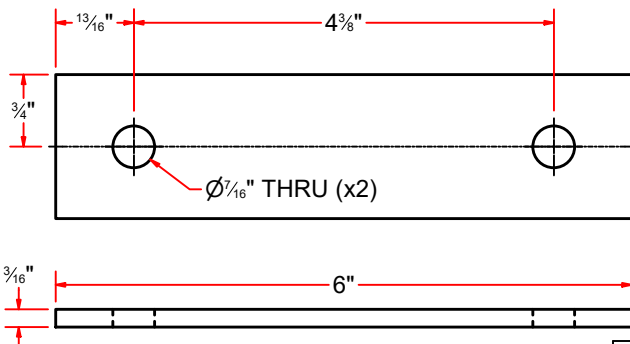
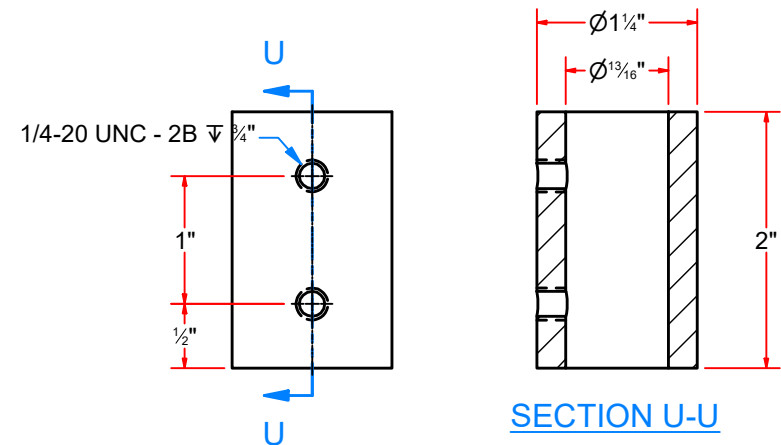


Plate #3/16" x 1 1/2" x 6"



Rod O.D. 1 1/4" x I.D. 13/16" x 2" LG



SECTION U-U

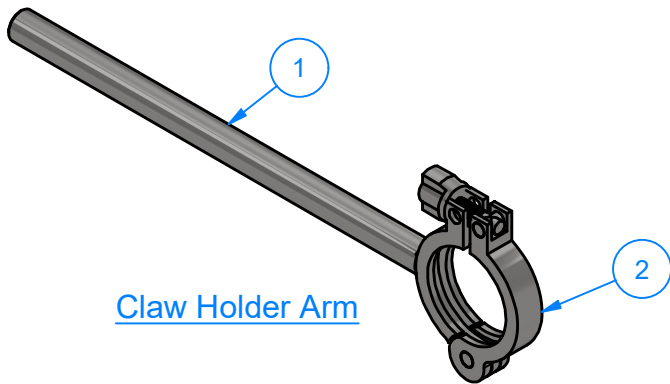


AVW EQUIPMENT CO., INC.
105 S. 9TH AVENUE
MAYWOOD, IL 60153
Tel: 708-343-7738 Fax: 708-343-9065
WWW.AVWEQUIPMENT.COM

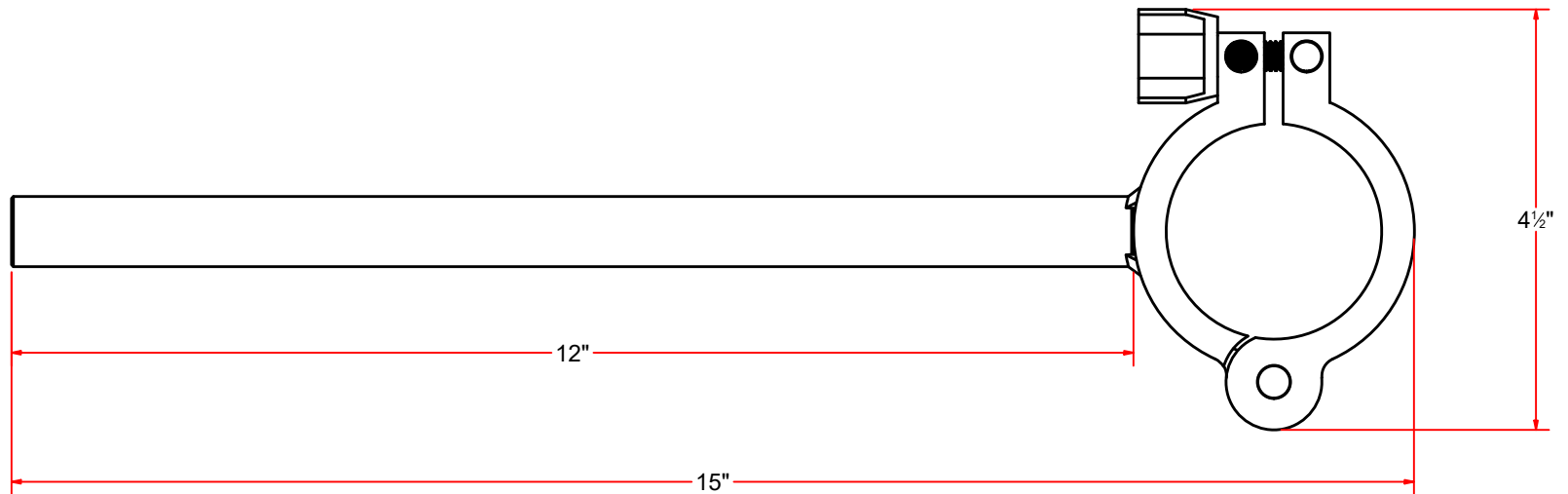
- COMPANY PROPRIETARY NOTE -
THIS DRAWING AND ITS DESIGNS ARE PROPERTY OF AVW EQUIPMENT CO. & IT IS NOT TO BE USED OR REPRODUCED WITHOUT THE PERMISSION FROM AVW CO.

DRAWN BY	Ljubomir	CUSTOMER:	
CHECKED BY		PROJECT:	
QTY		DESCRIPTION: Plate #3/16" x 1 1/2" x 6"	
RELEASE DATE	1/14/2021	PART NUMBER: R-VA3352W17-003	REV#
DIMENSION ARE IN INCHES & PROVIDED PRIOR TO SURFACE TREATMENTS, UNLESS NOTED.		SIZE A	EST WEIGHT:
			SHEET 12 of 17

PATH:L:\Libraries\Productivity\Vacuum Arches\Claw Holders\VA3352W17_VA3352W16 - Claw Holster\Parts\I-R-VA3352W17-003.ipt



Parts List		
ITEM	QTY	DESCRIPTION
1	1	Rod D 3/4" x 12" LG
2	1	2" Sanitary Fitting Clamp



AVW EQUIPMENT CO., INC.
105 S. 9TH AVENUE
MAYWOOD, IL 60153
Tel: 708-343-7738 Fax: 708-343-9065
WWW.AVWEQUIPMENT.COM

- COMPANY PROPRIETARY NOTE -

THIS DRAWING AND ITS DESIGNS ARE PROPERTY OF AVW EQUIPMENT CO. & IT IS NOT TO BE USED OR REPRODUCED WITHOUT THE PERMISSION FROM AVW CO.

DRAWN BY

Ljubomir

CUSTOMER:

CHECKED BY

PROJECT:

QTY

DESCRIPTION: Claw Holder Arm

RELEASE
DATE

1/14/2021

PART NUMBER: R-VA3352W17-004

REV#

DIMENSION ARE IN INCHES & PROVIDED PRIOR
TO SURFACE TREATMENTS, UNLESS NOTED.

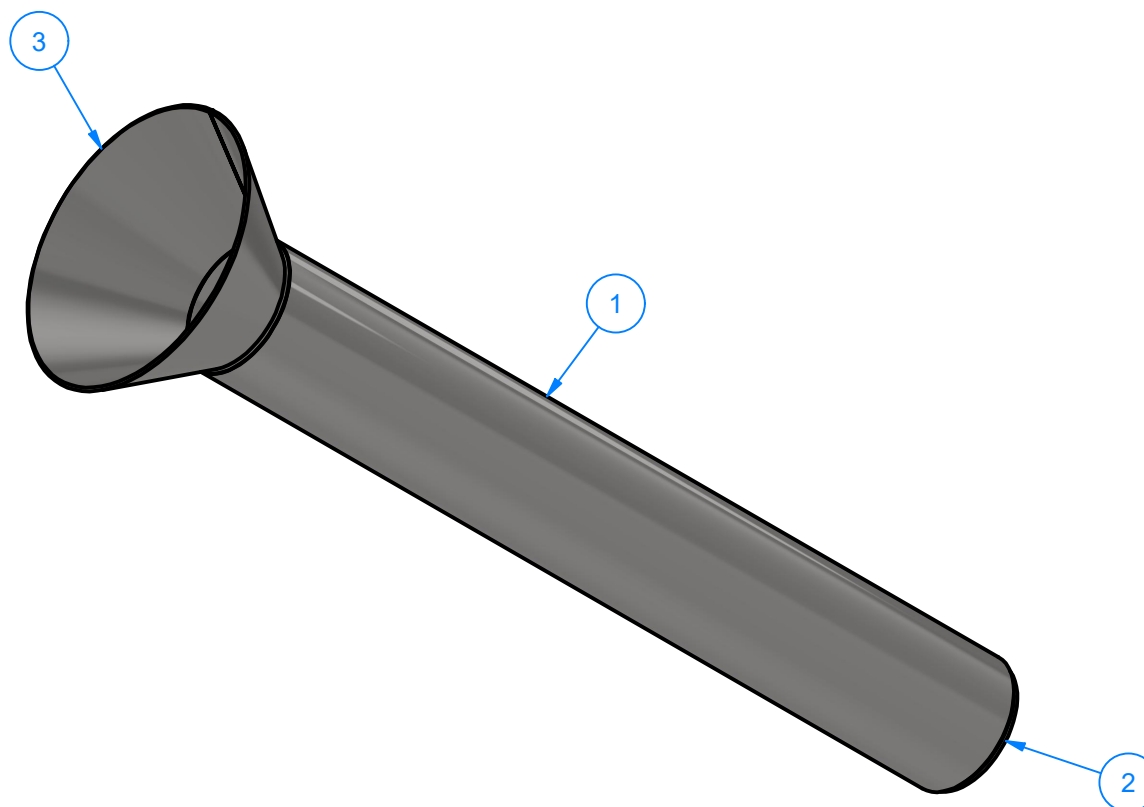
SIZE
A

EST WEIGHT:

SHEET 13 of 17

PATH:L:\Libraries\Productivity\Vacuum Arches\Claw Holders\VA3352W17_VA3352W16 - Claw Holster\Parts\R-VA3352W17-004.iam

Parts List		
ITEM	QTY	DESCRIPTION
1	1	2" Pipe, Schedule 10, LG 16"
2	1	Cover Plate #10Ga - 2" Pipe, Sch 10
3	1	Sheet Metal #16Ga



Stainless Steel Vacuum Holster



AVW EQUIPMENT CO., INC.
105 S. 9TH AVENUE
MAYWOOD, IL 60153
Tel: 708-343-7738 Fax: 708-343-9065
WWW.AVWEQUIPMENT.COM

- COMPANY PROPRIETARY NOTE -

THIS DRAWING AND ITS DESIGNS ARE PROPERTY OF AVW EQUIPMENT CO. &
IT IS NOT TO BE USED OR REPRODUCED WITHOUT THE PERMISSION FROM AVW CO.

DRAWN BY

Ljubomir

CUSTOMER:

CHECKED BY

PROJECT:

QTY

DESCRIPTION: Stainless Steel Vacuum Holster

RELEASE
DATE

1/14/2021

PART NUMBER: Vacuum Holster #1

REV#

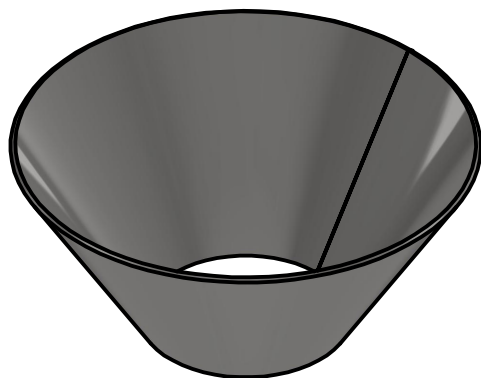
DIMENSION ARE IN INCHES & PROVIDED PRIOR
TO SURFACE TREATMENTS, UNLESS NOTED.

SIZE
A

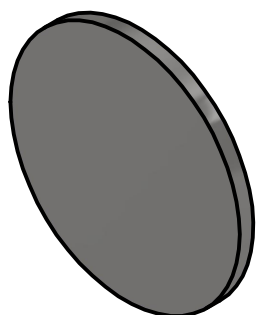
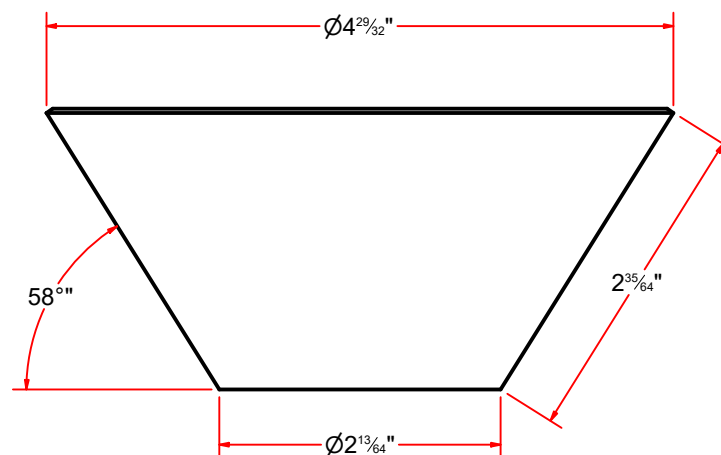
EST WEIGHT:

SHEET 14 of 17

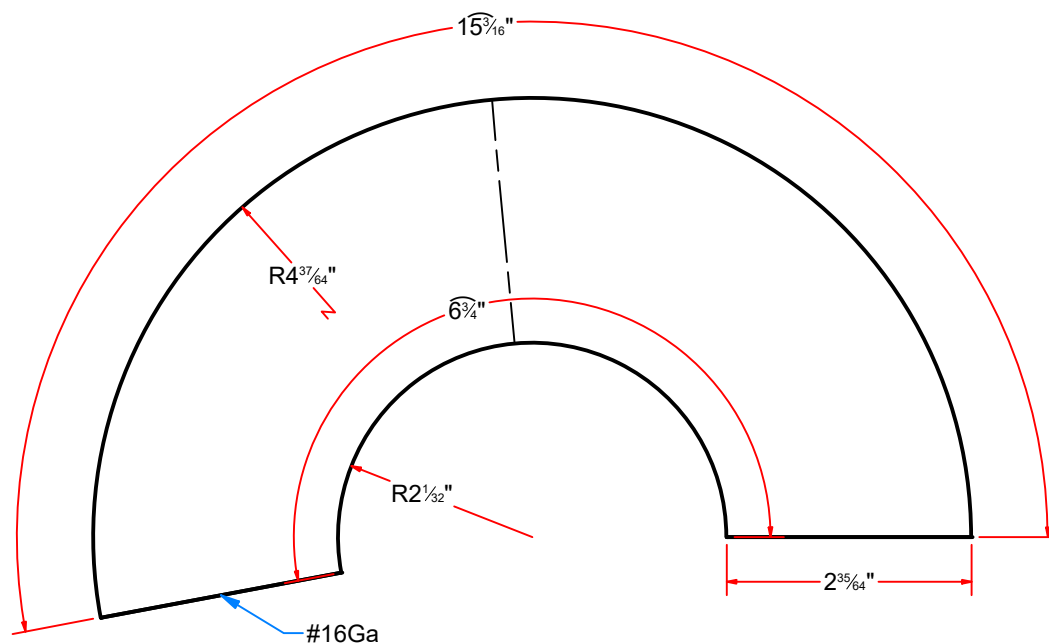
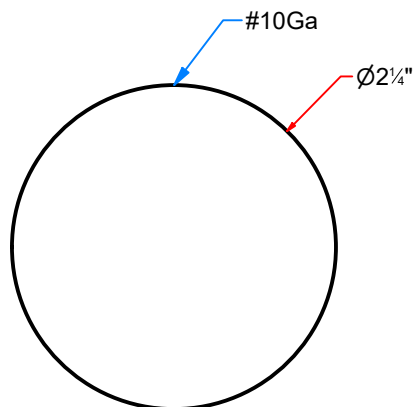
PATH:L:\Designs\Product Lines\Vacuum Arches\Vacuum\SS Vacuum Holster\SS Vacuum Holster.iam



Sheet Metal #16Ga



Cover Plate #10Ga - 2" Pipe, Sch 10



AVW EQUIPMENT CO., INC.
105 S. 9TH AVENUE
MAYWOOD, IL 60153
Tel: 708-343-7738 Fax: 708-343-9065
WWW.AVWEQUIPMENT.COM

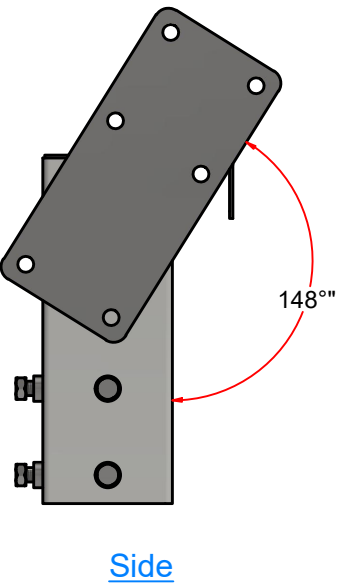
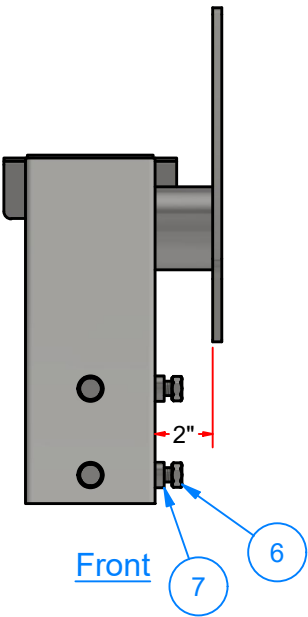
- COMPANY PROPRIETARY NOTE -

THIS DRAWING AND ITS DESIGNS ARE PROPERTY OF AVW EQUIPMENT CO. & IT IS NOT TO BE USED OR REPRODUCED WITHOUT THE PERMISSION FROM AVW CO.

DRAWN BY	Ljubomir	CUSTOMER:	
CHECKED BY		PROJECT:	
QTY		DESCRIPTION: Cover Plate #10Ga - 2" Pipe, Sch 10	
RELEASE DATE	1/14/2021	PART NUMBER: Cover Plate #10Ga - Pipe 2in Sch10	REV#
DIMENSION ARE IN INCHES & PROVIDED PRIOR TO SURFACE TREATMENTS, UNLESS NOTED.		SIZE A	EST WEIGHT:
			SHEET 15 of 17

PATH:L:\Libraries\AVW Components\Plates\Cover Plate #10Ga - Pipe 2in Sch40.ipt

SINGLE VACUUM ARCH SLEEVE



Parts List		
ITEM	QTY	DESCRIPTION
1	1	Sq. Tubing [7 Ga.] 4 1/2" x 12" LG
2	1	Pipe 2 1/2" sch 10 x 2" LG
3	1	Plate #5/16" x 11" x 5"
4	1	Sheet Metal #10Ga x 6" x 4"
5	1	Cover Plate #14Ga x 4-3/8 x 4-3/8
6	4	1/2" - 13 x 1" UNC Hex Screw
7	4	Sleeve Nut #5/16" x 7/8"OD x 7/16"ID

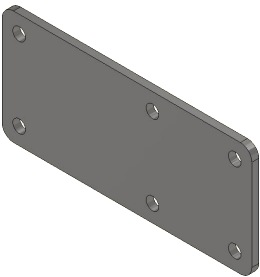
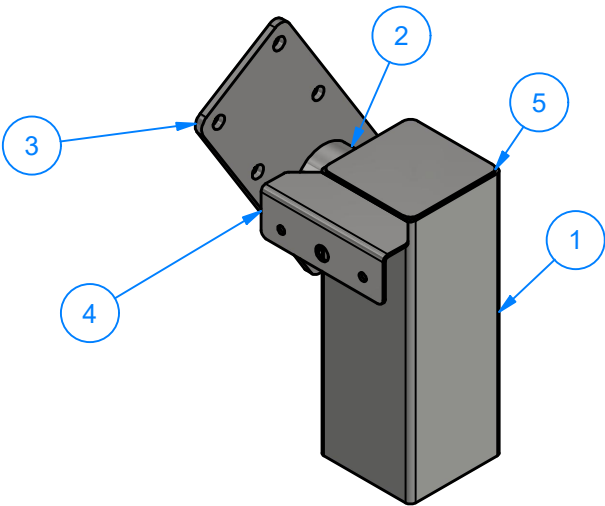
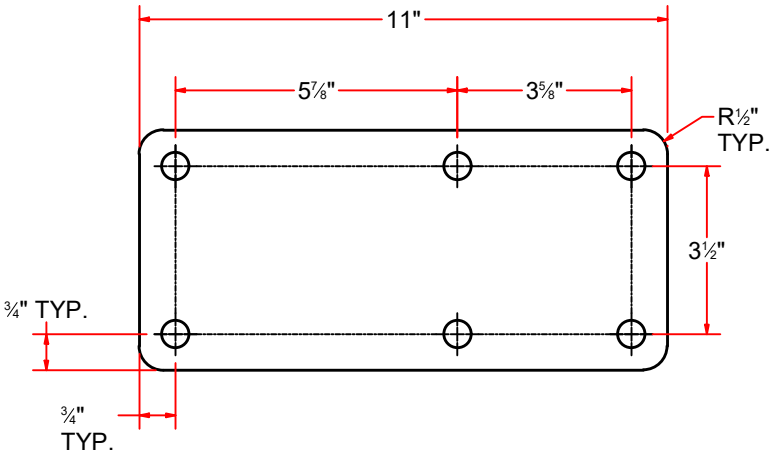
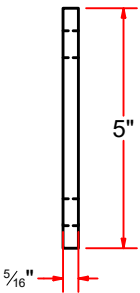


Plate #5/16" x 11" x 5"



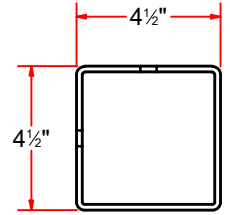
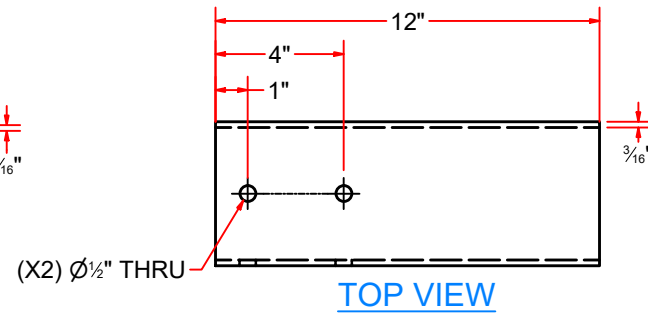
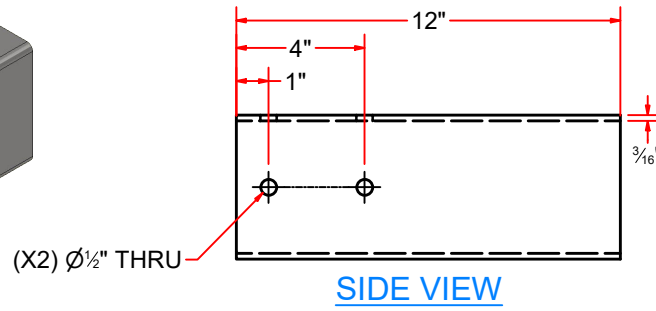
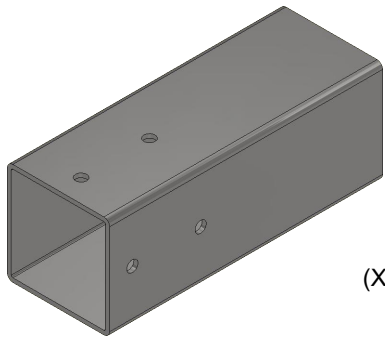
VACUUM ARCH SLEEVE - PASSENGER



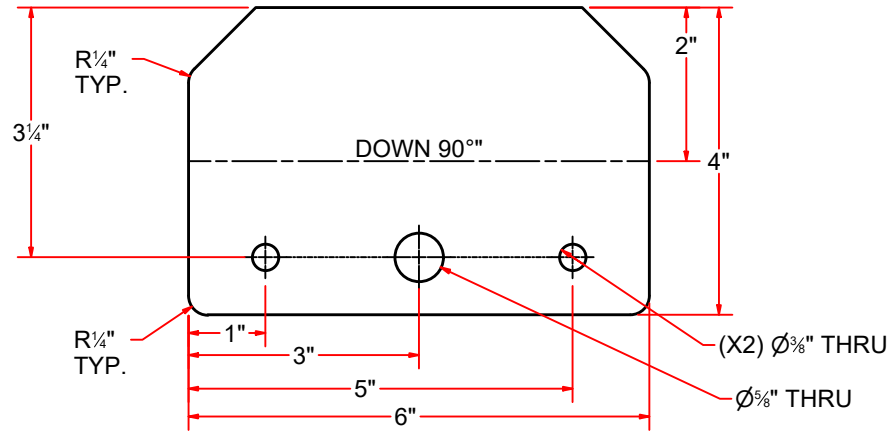
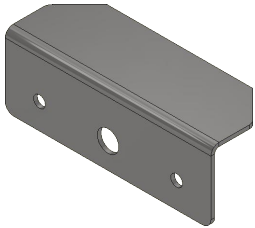
AVW EQUIPMENT CO., INC.
105 S. 9TH AVENUE
MAYWOOD, IL 60153
Tel: 708-343-7738 Fax: 708-343-9065
WWW.AVWEQUIPMENT.COM

- COMPANY PROPRIETARY NOTE -
THIS DRAWING AND ITS DESIGNS ARE PROPERTY OF AVW EQUIPMENT CO. &
IT IS NOT TO BE USED OR REPRODUCED WITHOUT THE PERMISSION FROM AVW CO.

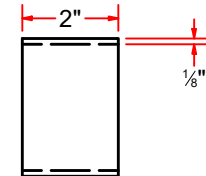
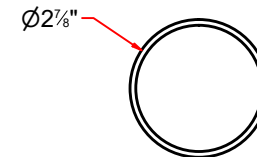
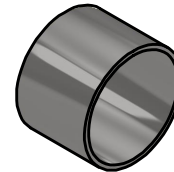
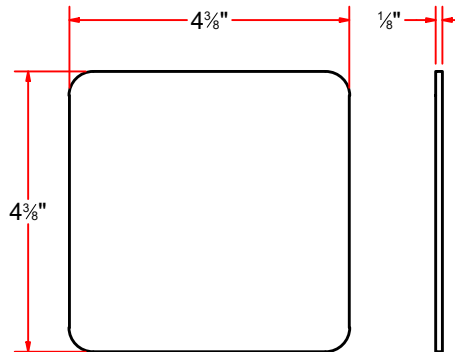
DRAWN BY	Ljubomir	CUSTOMER:	
CHECKED BY		PROJECT:	
QTY		DESCRIPTION: Plate #5/16" x 11" x 5"	
RELEASE DATE	1/14/2021	PART NUMBER: (11 x 5) & ((H 29_64 x 6) #5_16	REV#
DIMENSION ARE IN INCHES & PROVIDED PRIOR TO SURFACE TREATMENTS, UNLESS NOTED.		SIZE A	EST WEIGHT:
			SHEET 16 of 17



Sq.Tubing [7 Ga.] 4 1/2" x 12" LG



Sheet Metal #10Ga x 6" x 4"



Pipe 2 1/2" sch 10 x 2" LG

Cover Plate #14Ga x 4-3/8 x 4-3/8



AVW EQUIPMENT CO., INC.
105 S. 9TH AVENUE
MAYWOOD, IL 60153
Tel: 708-343-7738 Fax: 708-343-9065
WWW.AVWEQUIPMENT.COM

- COMPANY PROPRIETARY NOTE -

THIS DRAWING AND ITS DESIGNS ARE PROPERTY OF AVW EQUIPMENT CO. & IT IS NOT TO BE USED OR REPRODUCED WITHOUT THE PERMISSION FROM AVW CO.

DRAWN BY

Ljubomir

CUSTOMER:

CHECKED BY

PROJECT:

QTY

DESCRIPTION: Sq.Tubing [7 Ga.] 4 1/2" x 12" LG

RELEASE DATE

1/14/2021

PART NUMBER: Sq. Tubing [7 Gauge] 4.5 in x 12 in LG

REV#

DIMENSION ARE IN INCHES & PROVIDED PRIOR TO SURFACE TREATMENTS, UNLESS NOTED.

SIZE
A

EST WEIGHT:

SHEET 17 of 17

PATH:L:\Libraries\AVW Components\Tubing\Square Tubing\Sq.Tubing 4.5 in\Sq. Tubing [7 Gauge] 4.5 in x 12 in LG [Sleeve].ipt