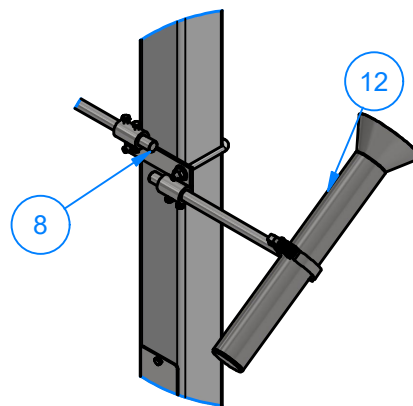
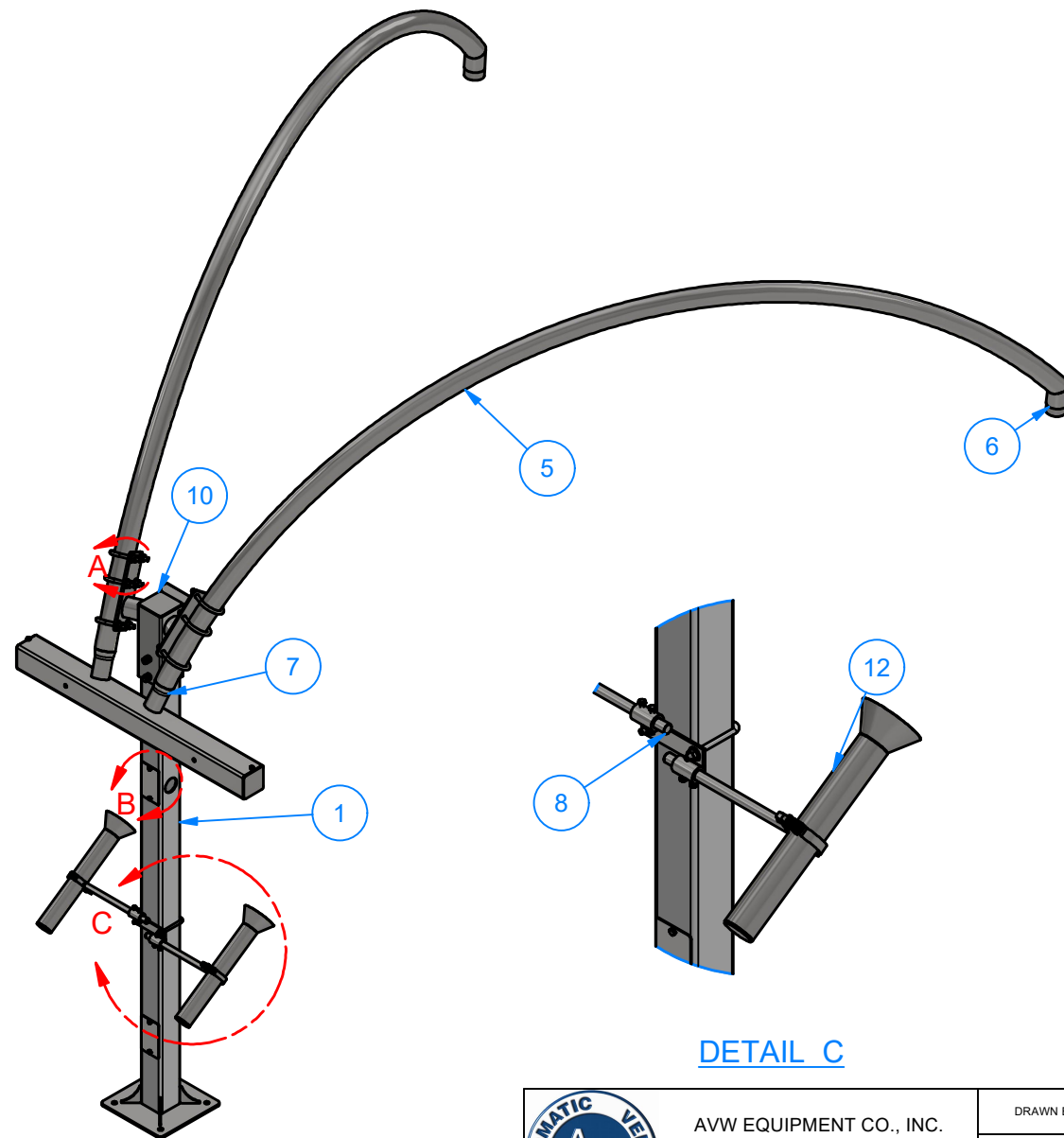
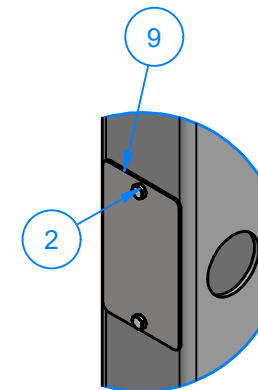


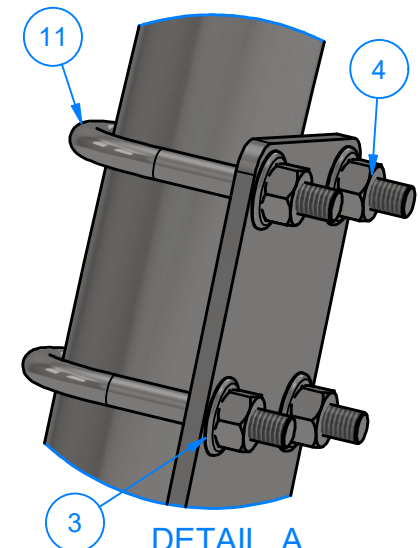
# VA3352-17-4141 - DUAL VACUUM ARCH



DETAIL C



DETAIL B



DETAIL A

Parts List		
ITEM	QTY	DESCRIPTION
1	1	Dual Vacuum Arch Leg 84" H
2	6	1/4" - 20 x 0.5" UNC Hex Screw
3	12	1/2" R Flat Washer
4	12	1/2"-13 Stainless Steel Hex Nut
5	2	Pipe 2 1/2" SCH10 x 160" LG
6	2	Hose Adapter w/ 2" Half Coupling
7	2	Tubing 2 1/2" OD x .063" Wall x 4" LG
8	1	R-VA3352W17 - Dual Claw Holder
9	2	Sheet Metal #14Ga x 3 3/8" x 5 3/4"
10	1	VA3352AS17-4141 - Dual Vacuum Arch Sleeve
11	6	Round U-Bolt 1/2" D x 3" W x 4 1/2" LG
12	2	Stainless Steel Vacuum Holster



AVW EQUIPMENT CO., INC.  
105 S. 9TH AVENUE  
MAYWOOD, IL 60153  
Tel: 708-343-7738 Fax: 708-343-9065  
WWW.AVWEQUIPMENT.COM

## - COMPANY PROPRIETARY NOTE -

THIS DRAWING AND ITS DESIGNS ARE PROPERTY OF AVW EQUIPMENT CO. & IT IS NOT TO BE USED OR REPRODUCED WITHOUT THE PERMISSION FROM AVW CO.

DRAWN BY

Darpan

CUSTOMER: AVW EQUIPMENT CO.

CHECKED BY

PROJECT: VA3352-17-4141 - Dual Vacuum Arch

QTY

DESCRIPTION: VA3352-17 - Dual Vacuum Arch

RELEASE DATE

1/19/2021

PART NUMBER: VA3352-17-4141

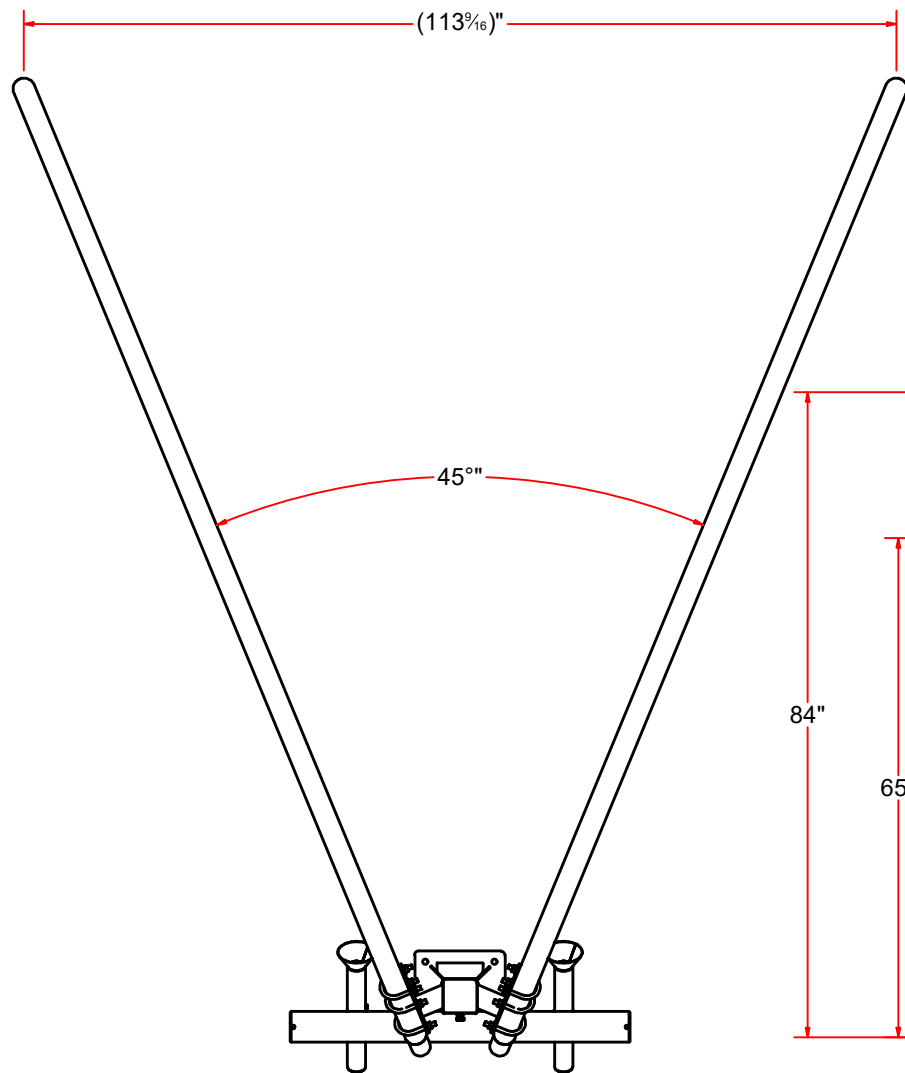
REV#

DIMENSION ARE IN INCHES & PROVIDED PRIOR TO SURFACE TREATMENTS, UNLESS NOTED.

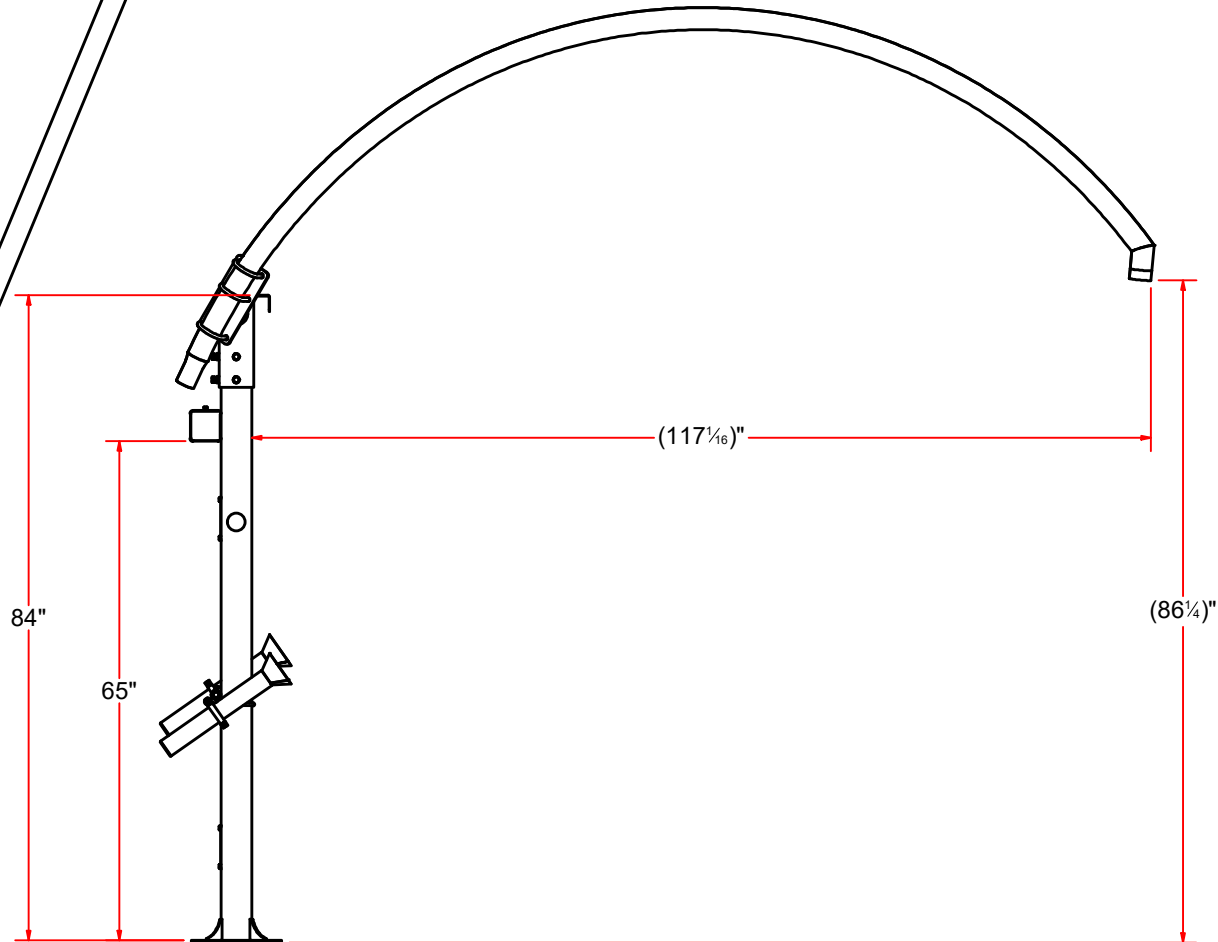
SIZE A

EST WEIGHT:

SHEET 1 of 17



TOP VIEW



SIDE VIEW



AVW EQUIPMENT CO., INC.  
105 S. 9TH AVENUE  
MAYWOOD, IL 60153  
Tel: 708-343-7738 Fax: 708-343-9065  
WWW.AVWEQUIPMENT.COM

**- COMPANY PROPRIETARY NOTE -**

THIS DRAWING AND ITS DESIGNS ARE PROPERTY OF AVW EQUIPMENT CO. & IT IS NOT TO BE USED OR REPRODUCED WITHOUT THE PERMISSION FROM AVW CO.

DRAWN BY

Darpan

CUSTOMER: AVW EQUIPMENT CO.

CHECKED BY

PROJECT: VA3352-17-4141 - Dual Vacuum Arch

QTY

DESCRIPTION: VA3352-17 - Dual Vacuum Arch

RELEASE  
DATE

1/19/2021

PART NUMBER: VA3352-17-4141

REV#

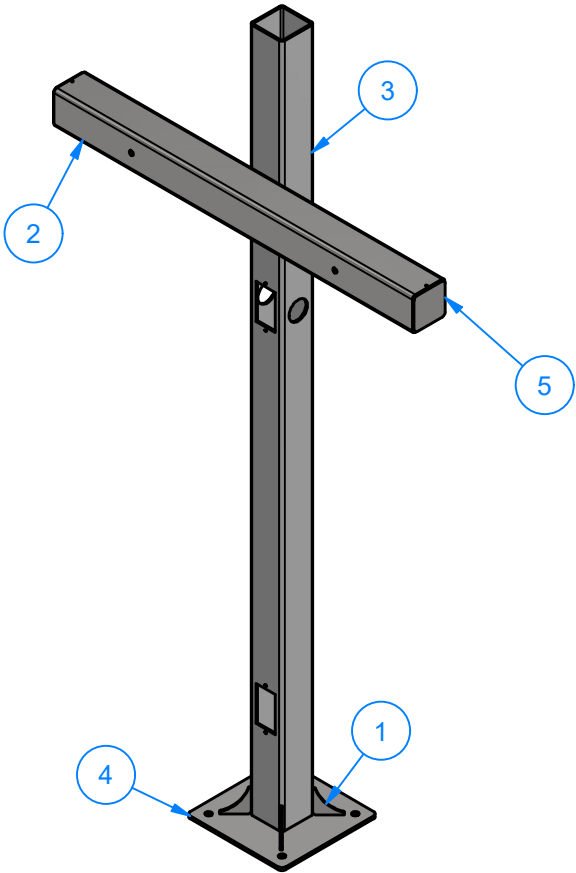
DIMENSION ARE IN INCHES & PROVIDED PRIOR  
TO SURFACE TREATMENTS, UNLESS NOTED.

SIZE  
**A**

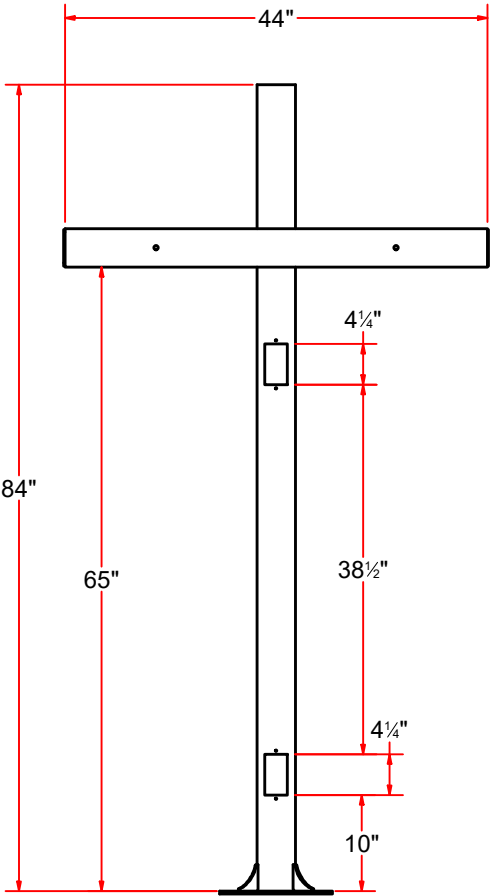
EST WEIGHT:

SHEET 2 of 17

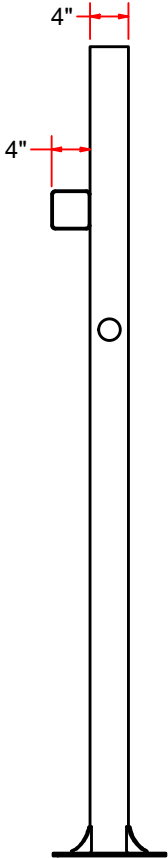
VA3352A-17 DUAL VACUUM ARCH LEG 84" LG.



ISO VIEW



FRONT VIEW



SIDE VIEW

Parts List		
ITEM	QTY	DESCRIPTION
1	4	Gusset #3/16" x 2-3_4x2-3_4
2	1	Sq. Tube #3/16" x 4" x 44" SS
3	1	Sq. Tube #7Ga. x 4" x 4" x 84" LG.
4	1	PLATE 11_3/4" X 11_3/4 #5_16
5	2	Cap - Sheet Metal #10Ga x 3 7/8" x 3 7/8"



AVW EQUIPMENT CO., INC.  
105 S. 9TH AVENUE  
MAYWOOD, IL 60153  
Tel: 708-343-7738 Fax: 708-343-9065  
WWW.AVWEQUIPMENT.COM

- COMPANY PROPRIETARY NOTE -  
THIS DRAWING AND ITS DESIGNS ARE PROPERTY OF AVW EQUIPMENT CO. &  
IT IS NOT TO BE USED OR REPRODUCED WITHOUT THE PERMISSION FROM AVW CO.

DRAWN BY	Darpan	CUSTOMER: AVW EQUIPMENT CO.	
CHECKED BY		PROJECT: VA3352-17-4141 - Dual Vacuum Arch	
QTY		DESCRIPTION: Dual Vacuum Arch Leg 84" H	
RELEASE DATE	1/19/2021	PART NUMBER: VA3352A-17 - 84in Vacuum Leg Assembly	REV#
DIMENSION ARE IN INCHES & PROVIDED PRIOR TO SURFACE TREATMENTS, UNLESS NOTED.		SIZE A	EST WEIGHT: SHEET 3 of 17

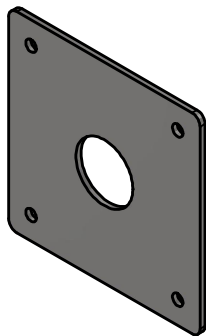
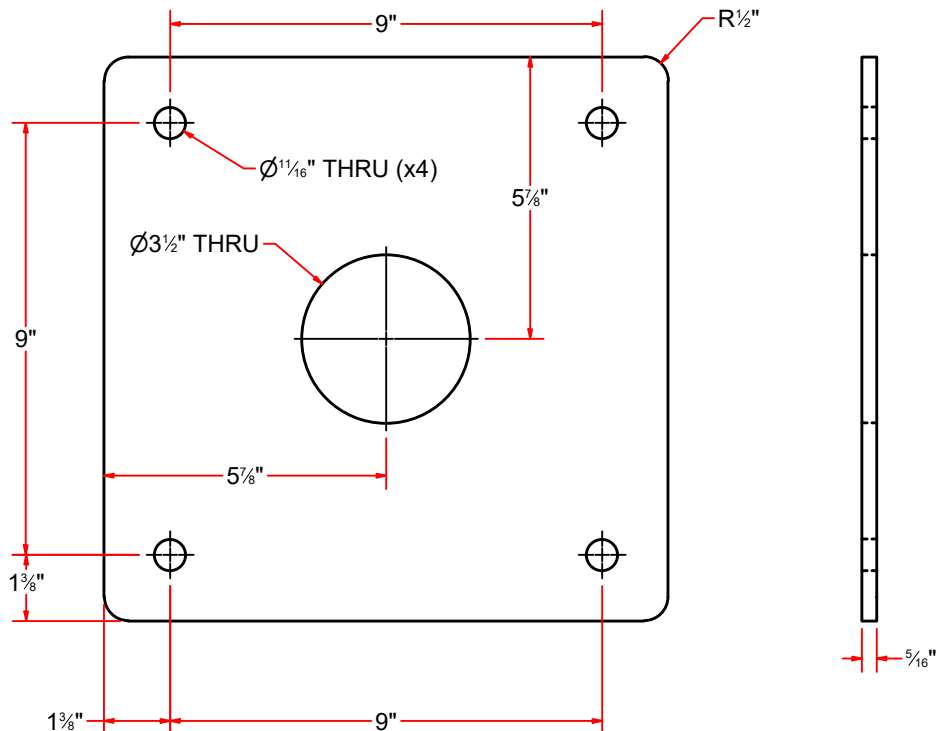
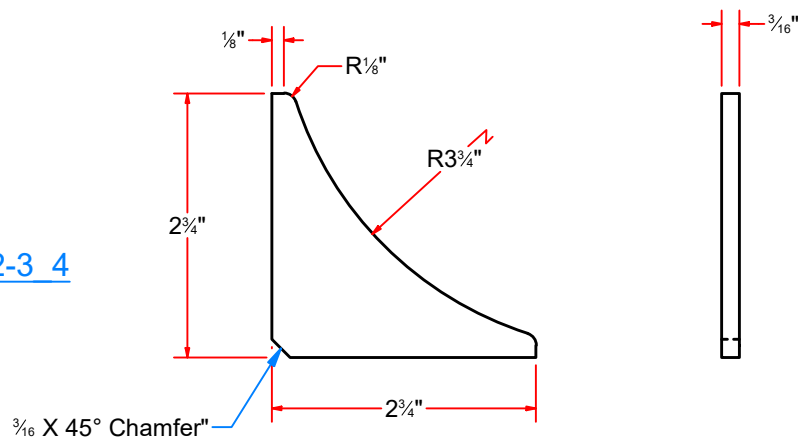


PLATE 11 3/4" X 11 3/4 #5 16



Gusset #3/16" x 2-3 4x2-3 4



$\frac{3}{16}$  X 45° Chamfer"



AVW EQUIPMENT CO., INC.  
105 S. 9TH AVENUE  
MAYWOOD, IL 60153  
Tel: 708-343-7738 Fax: 708-343-9065  
WWW.AVWEQUIPMENT.COM

**- COMPANY PROPRIETARY NOTE -**

THIS DRAWING AND ITS DESIGNS ARE PROPERTY OF AVW EQUIPMENT CO. & IT IS NOT TO BE USED OR REPRODUCED WITHOUT THE PERMISSION FROM AVW CO.

DRAWN BY

Darpan

CUSTOMER: AVW EQUIPMENT CO.

CHECKED BY

PROJECT: VA3352-17-4141 - Dual Vacuum Arch

QTY

DESCRIPTION: PLATE 11\_3/4" X 11\_3/4 #5\_16

RELEASE DATE

1/19/2021

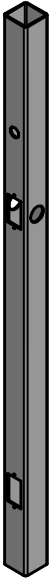
PART NUMBER: (11-3\_4 X 11-3\_4) & (H 5\_8 X 4) # 5\_16 REV#

DIMENSION ARE IN INCHES & PROVIDED PRIOR TO SURFACE TREATMENTS, UNLESS NOTED.


SIZE  
**A**

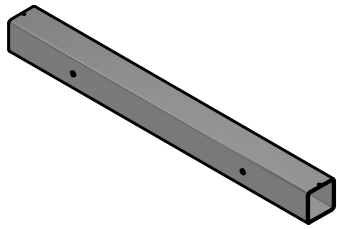
EST WEIGHT:

SHEET 4 of 17

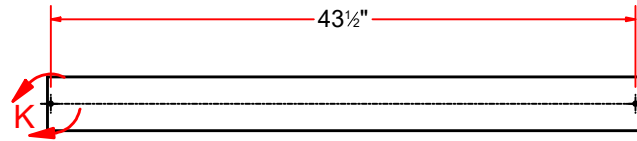


Sq. Tube #7Ga. x 4" x 4" x 84" LG.

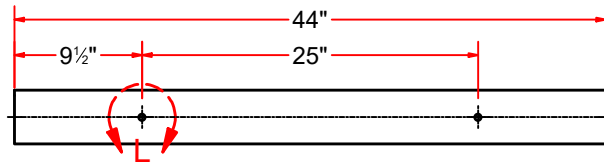
 <p><b>AVW EQUIPMENT CO., INC.</b>          105 S. 9TH AVENUE          MAYWOOD, IL 60153          Tel: 708-343-7738 Fax: 708-343-9065          WWW.AVWEQUIPMENT.COM</p>	DRAWN BY	Darpan	CUSTOMER: AVW EQUIPMENT CO.		
	CHECKED BY		PROJECT: VA3352-17-4141 - Dual Vacuum Arch		
	QTY		DESCRIPTION: Sq. Tube #7Ga. x 4" x 4" x 84" LG.		
<p><b>- COMPANY PROPRIETARY NOTE -</b>          THIS DRAWING AND ITS DESIGNS ARE PROPERTY OF AVW EQUIPMENT CO. &amp;          IT IS NOT TO BE USED OR REPRODUCED WITHOUT THE PERMISSION FROM AVW CO.</p>	RELEASE DATE	1/19/2021	PART NUMBER: VA3352A-17 - Part001		REV#
	DIMENSION ARE IN INCHES & PROVIDED PRIOR TO SURFACE TREATMENTS, UNLESS NOTED.		SIZE <b>A</b>	EST WEIGHT:	SHEET 5 of 17
PATH:L:\Designs\Product Lines\Vacuum Arches\Productivity\VA3352A-17 - Part001.ipt					



Sq. Tube #3/16" x 4" x 44" SS

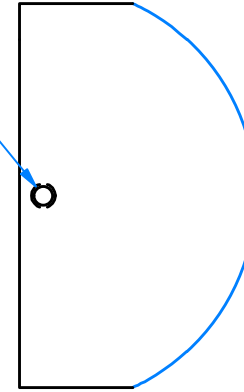


Top

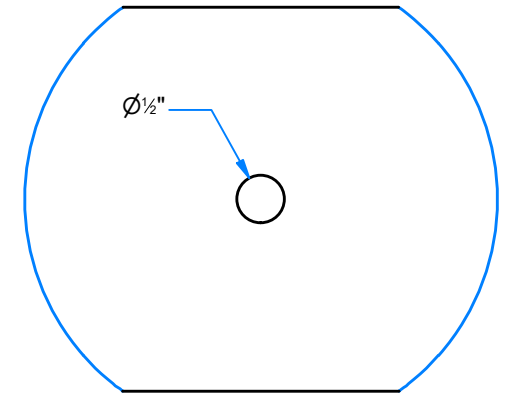


Front

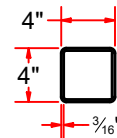
1/4-20 UNC - 2B "



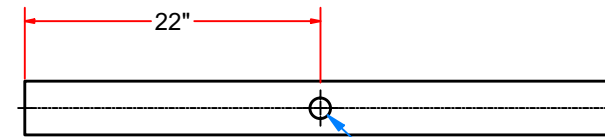
DETAIL K



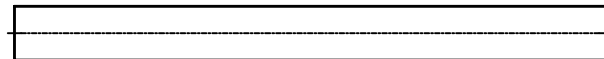
DETAIL L



Right



Back



Bottom



AVW EQUIPMENT CO., INC.  
105 S. 9TH AVENUE  
MAYWOOD, IL 60153  
Tel: 708-343-7738 Fax: 708-343-9065  
WWW.AVWEQUIPMENT.COM

- COMPANY PROPRIETARY NOTE -

THIS DRAWING AND ITS DESIGNS ARE PROPERTY OF AVW EQUIPMENT CO. & IT IS NOT TO BE USED OR REPRODUCED WITHOUT THE PERMISSION FROM AVW CO.

DRAWN BY

Darpan

CUSTOMER: AVW EQUIPMENT CO.

CHECKED BY

PROJECT: VA3352-17-4141 - Dual Vacuum Arch

QTY

DESCRIPTION: Sq. Tube #3/16" x 4" x 44" SS

RELEASE DATE

1/19/2021

PART NUMBER: Top Crossbar - Sq. Tube #3\_16 x 4 x 44 SS REV#

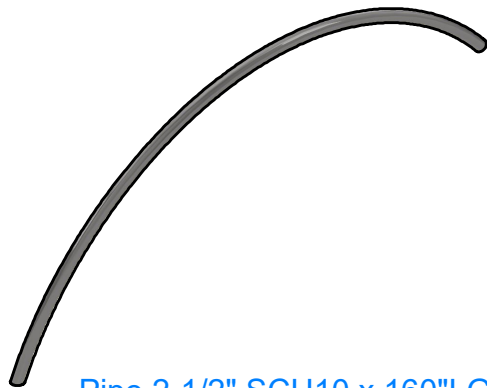
DIMENSION ARE IN INCHES & PROVIDED PRIOR TO SURFACE TREATMENTS, UNLESS NOTED.

SIZE  
A

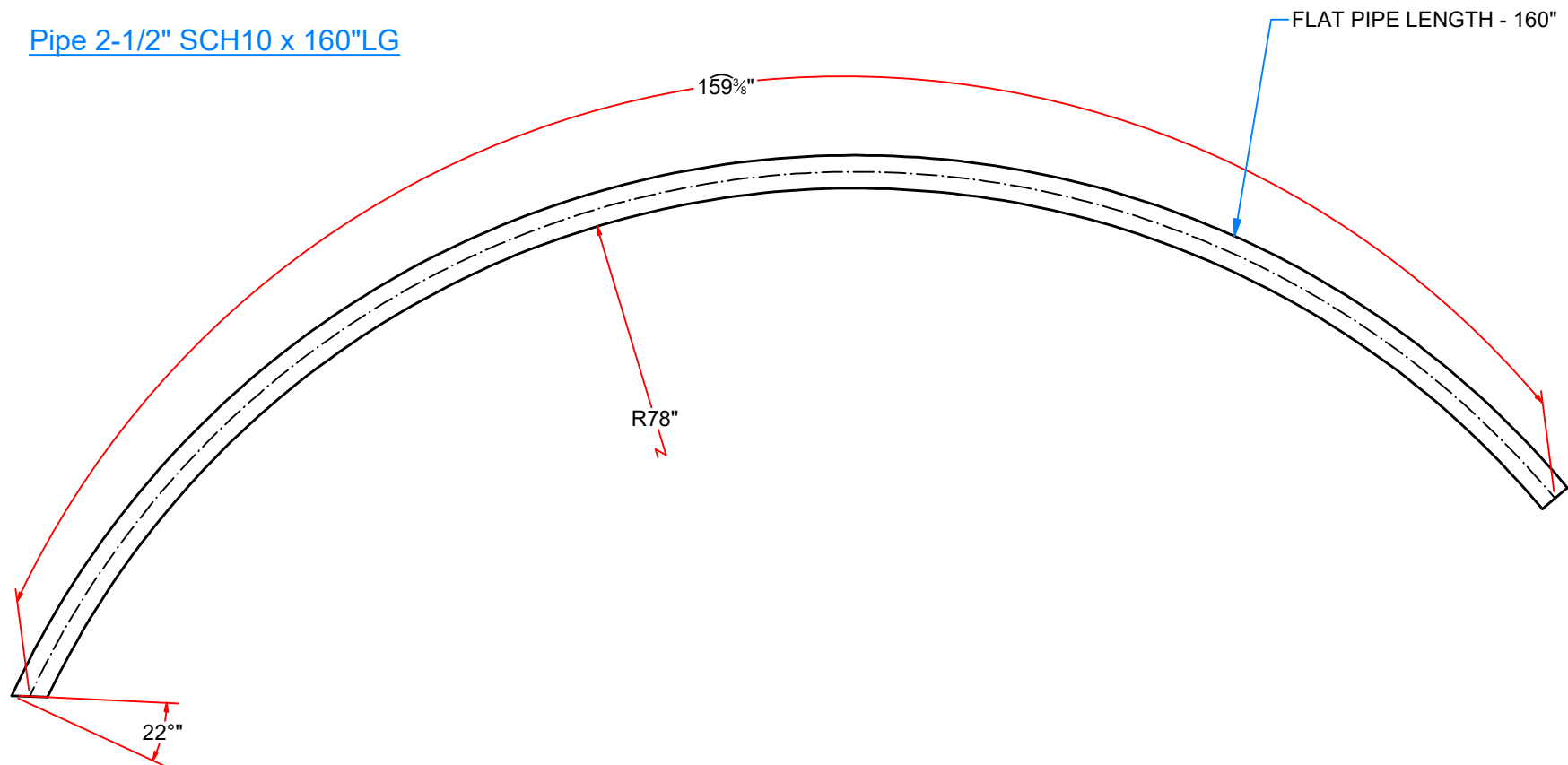
EST WEIGHT:

SHEET 6 of 17

PATH:L:\Libraries\AVW Components\Tubing\Vacuum Arch\Top Crossbar - Sq. Tube #3\_16 x 4 x 44 SS.ipt



Pipe 2-1/2" SCH10 x 160"LG

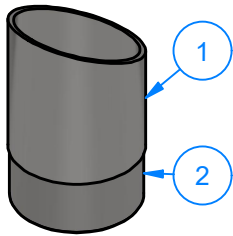


AVW EQUIPMENT CO., INC.  
105 S. 9TH AVENUE  
MAYWOOD, IL 60153  
Tel: 708-343-7738 Fax: 708-343-9065  
WWW.AVWEQUIPMENT.COM

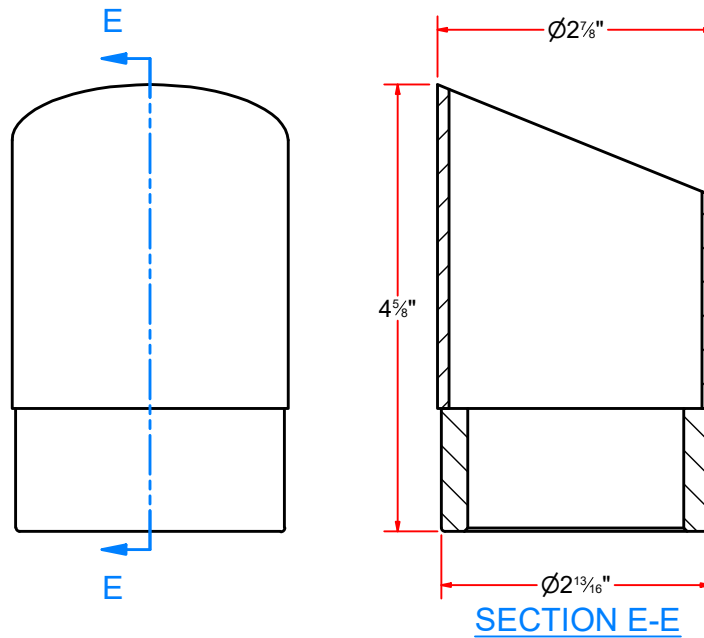
**- COMPANY PROPRIETARY NOTE -**  
THIS DRAWING AND ITS DESIGNS ARE PROPERTY OF AVW EQUIPMENT CO. &  
IT IS NOT TO BE USED OR REPRODUCED WITHOUT THE PERMISSION FROM AVW CO.

DRAWN BY	Darpan	CUSTOMER: AVW EQUIPMENT CO.		
CHECKED BY		PROJECT: VA3352-17-4141 - Dual Vacuum Arch		
QTY		DESCRIPTION: Pipe 2 1/2" SCH10 x 160" LG		
RELEASE DATE	1/19/2021	PART NUMBER: Pipe 2 1_2 SCH10 x 160 LG	REV#	
DIMENSION ARE IN INCHES & PROVIDED PRIOR TO SURFACE TREATMENTS, UNLESS NOTED.		SIZE <b>A</b>	EST WEIGHT:	SHEET 7 of 17

PATH:L:\Libraries\AVW Components\Pipes\Vacuum Pipes\Pipe 2 1\_2 SCH10 x 160 LG.ipt

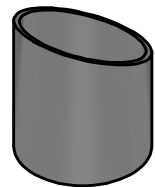


Hose Adapter with 2" Coupling

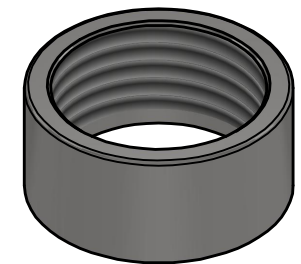
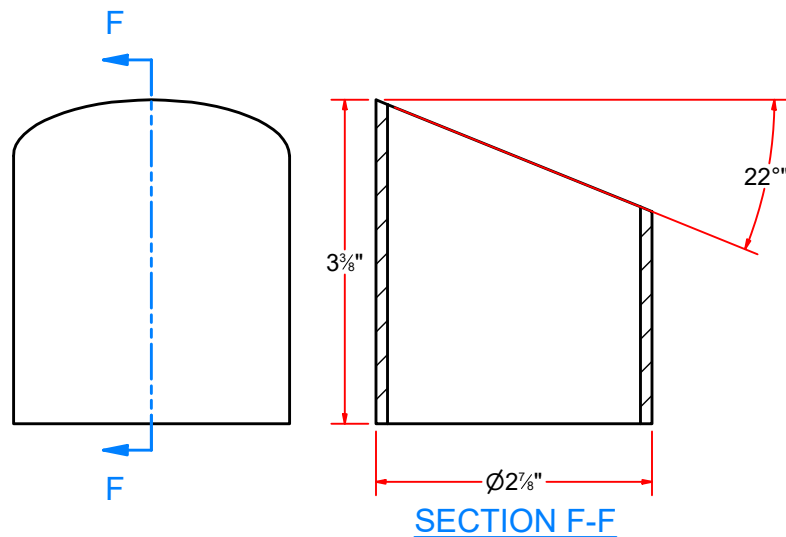


# Parts List

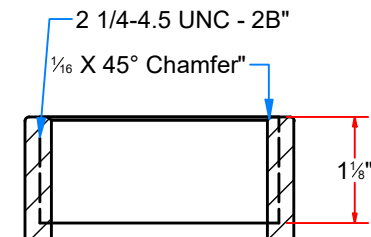
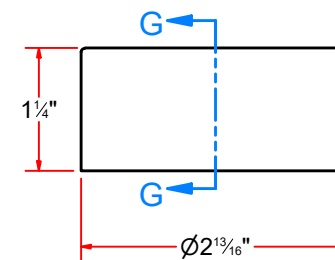
ITEM	QTY	DESCRIPTION
1	1	2 1/2" Pipe Sch10 x 3 3/8" LG.
2	1	2" Half Coupling



2-1/2" Pipe, Sch10 x 3-3/8



2" Half Coupling



SECTION G-G



AVW EQUIPMENT CO., INC.  
105 S. 9TH AVENUE  
MAYWOOD, IL 60153  
Tel: 708-343-7738 Fax: 708-343-9065  
WWW.AVWEQUIPMENT.COM

## - COMPANY PROPRIETARY NOTE -

THIS DRAWING AND ITS DESIGNS ARE PROPERTY OF AVW EQUIPMENT CO. & IT IS NOT TO BE USED OR REPRODUCED WITHOUT THE PERMISSION FROM AVW CO.

DRAWN BY

Darpan

CUSTOMER: AVW EQUIPMENT CO.

CHECKED BY

PROJECT: VA3352-17-4141 - Dual Vacuum Arch

QTY

DESCRIPTION: Hose Adapter w/ 2" Half Coupling

RELEASE DATE

1/19/2021

PART NUMBER: 2in Hose Adapter with Coupling

REV#

DIMENSION ARE IN INCHES & PROVIDED PRIOR TO SURFACE TREATMENTS, UNLESS NOTED.

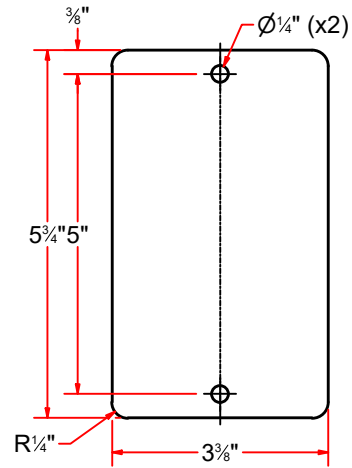
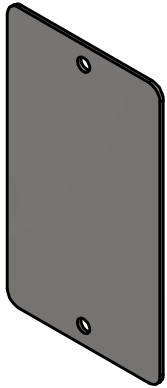
SIZE A

EST WEIGHT:

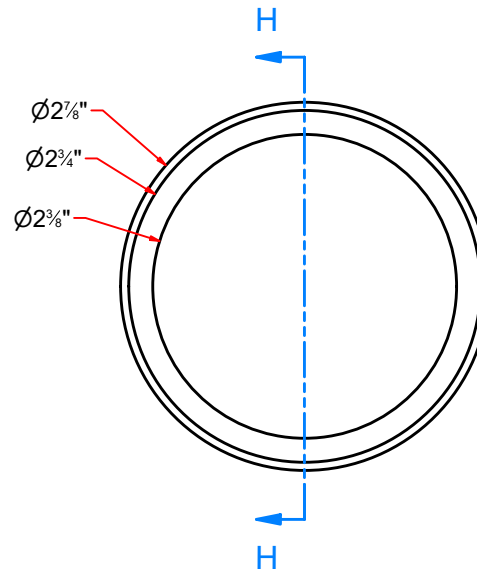
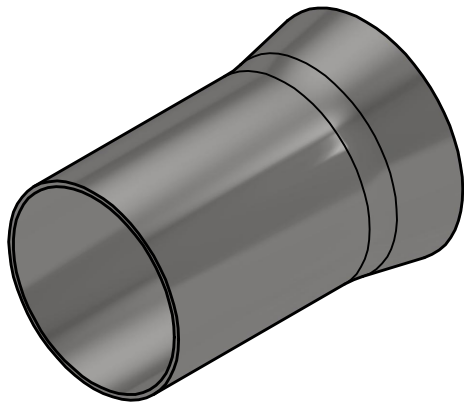
SHEET 8 of 17

PATH:L:\Libraries\Productivity\Vacuum Arches\Hose Adapters\2in Hose Adapter with Coupling.iam

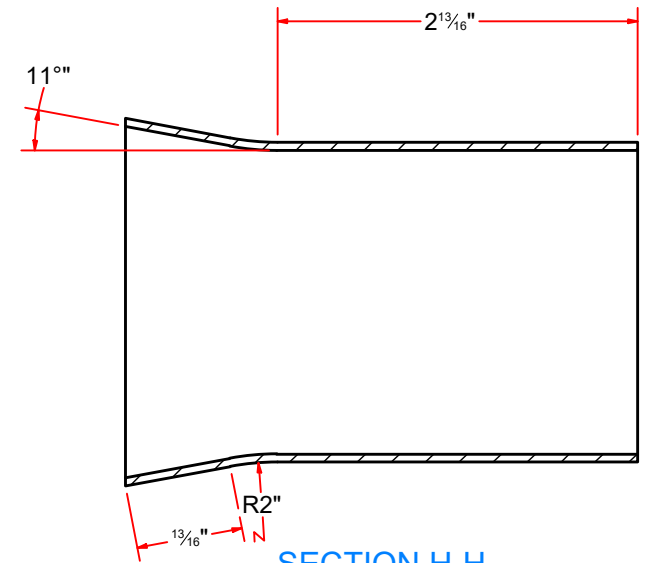




Sheet Metal #14Ga x 3 3/8" x 5 3/4"



Pipe Reducer -> 2-1/2" to 2" Pipe



SECTION H-H



AVW EQUIPMENT CO., INC.  
105 S. 9TH AVENUE  
MAYWOOD, IL 60153  
Tel: 708-343-7738 Fax: 708-343-9065  
WWW.AVWEQUIPMENT.COM

**- COMPANY PROPRIETARY NOTE -**

THIS DRAWING AND ITS DESIGNS ARE PROPERTY OF AVW EQUIPMENT CO. & IT IS NOT TO BE USED OR REPRODUCED WITHOUT THE PERMISSION FROM AVW CO.

DRAWN BY

Darpan

CUSTOMER: AVW EQUIPMENT CO.

CHECKED BY

PROJECT: VA3352-17-4141 - Dual Vacuum Arch

QTY

DESCRIPTION: Tubing 2 1/2" OD x .063" Wall x 4" LG

RELEASE DATE

1/19/2021

PART NUMBER: 2-1\_2 Pipe Hose Reducer

REV#

DIMENSION ARE IN INCHES & PROVIDED PRIOR TO SURFACE TREATMENTS, UNLESS NOTED.

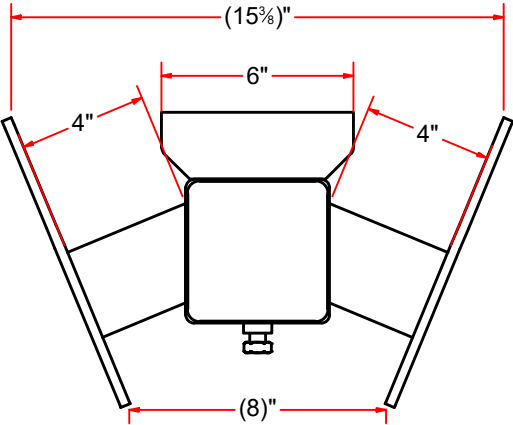
SIZE  
A

EST WEIGHT:

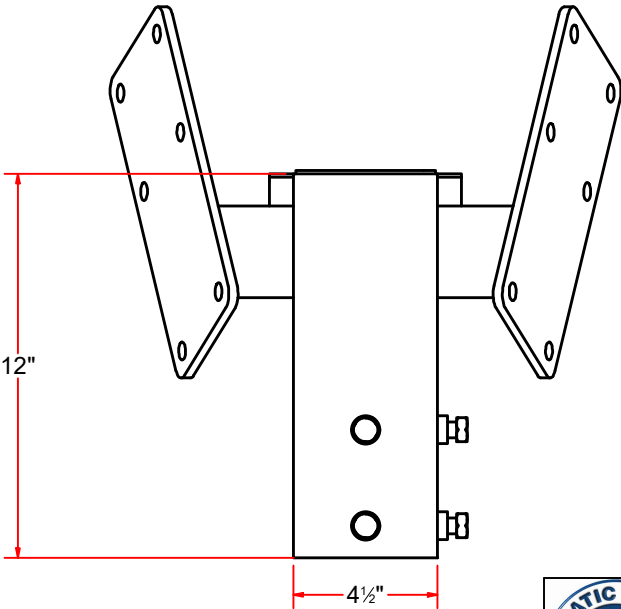
SHEET 9 of 17

PATH:L:\Designs\Product Lines\Vacuum Arches\Mikes\MCWVAD - Mikes Car Wash Vacuum Arch Dual\Parts\2-1\_2 Pipe Hose Reducer.ipt

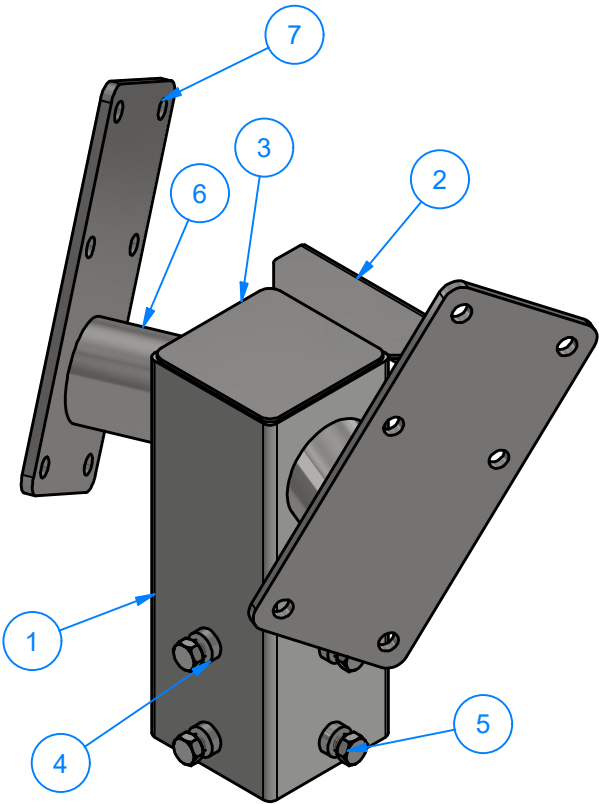
VA3352AS17-4141 - DUAL VACUUM ARCH SLEEVE



TOP VIEW



Parts List		
ITEM	QTY	DESCRIPTION
1	1	Sq. Tubing [7 Ga.] 4 1/2" x 12" LG
2	1	Sheet Metal #10Ga x 6" x 4"
3	1	Cover Plate #14Ga x 4-3_8 x 4-3_8
4	4	Sleeve Nut #5/16" x 7/8"OD x 7/16"ID
5	4	1/2" - 13 x 1" UNC Hex Screw
6	2	Pipe 2 1/2" sch 10 x 4" LG
7	2	Plate #5/16" x 11" x 5"



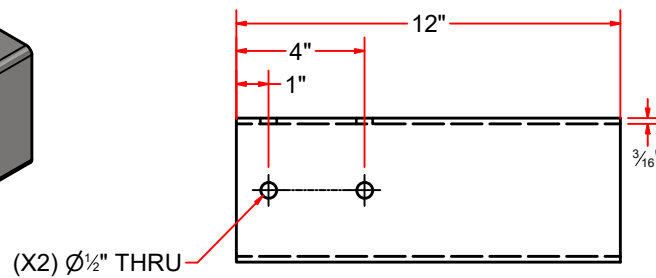
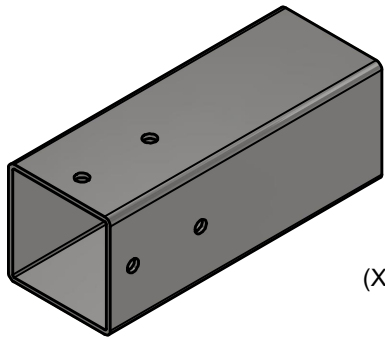
ISO VIEW



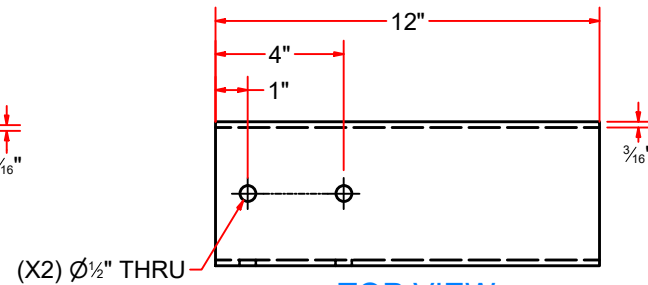
AVW EQUIPMENT CO., INC.  
105 S. 9TH AVENUE  
MAYWOOD, IL 60153  
Tel: 708-343-7738 Fax: 708-343-9065  
WWW.AVWEQUIPMENT.COM

- COMPANY PROPRIETARY NOTE -  
THIS DRAWING AND ITS DESIGNS ARE PROPERTY OF AVW EQUIPMENT CO. &  
IT IS NOT TO BE USED OR REPRODUCED WITHOUT THE PERMISSION FROM AVW CO.

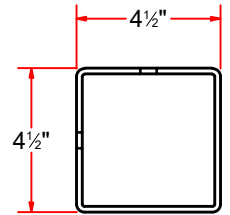
DRAWN BY	Darpan	CUSTOMER: AVW EQUIPMENT CO.	
CHECKED BY		PROJECT: VA3352-17-4141 - Dual Vacuum Arch	
QTY		DESCRIPTION: VA3352AS17-4141 - Dual Vacuum Arch Sleeve	
RELEASE DATE	1/19/2021	PART NUMBER: Vacuum Arch Sleeve - VA3352AS17-4141	REV#
DIMENSION ARE IN INCHES & PROVIDED PRIOR TO SURFACE TREATMENTS, UNLESS NOTED.		SIZE A	EST WEIGHT: SHEET 10 of 17



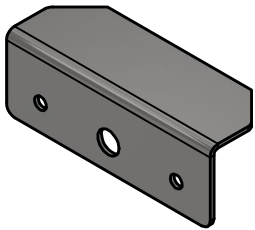
SIDE VIEW



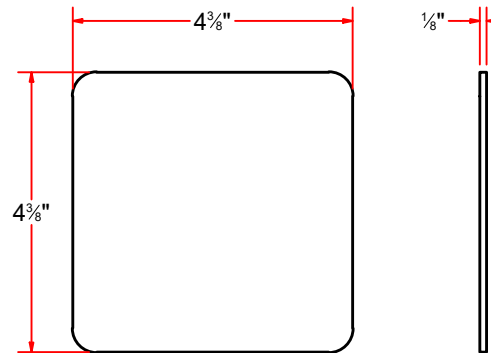
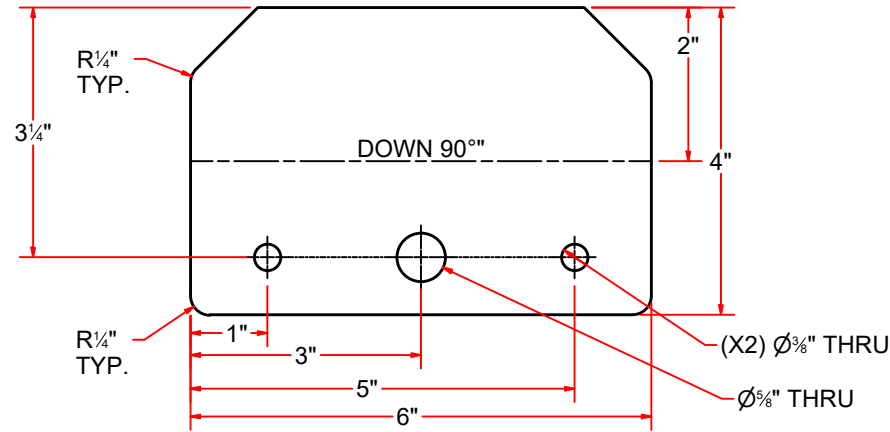
TOP VIEW



Sq.Tubing [7 Ga.] 4 1/2" x 12" LG



Sheet Metal #10Ga x 6" x 4"



Cover Plate #14Ga x 4-3\_8 x 4-3\_8



AVW EQUIPMENT CO., INC.  
105 S. 9TH AVENUE  
MAYWOOD, IL 60153  
Tel: 708-343-7738 Fax: 708-343-9065  
WWW.AVWEQUIPMENT.COM

**- COMPANY PROPRIETARY NOTE -**

THIS DRAWING AND ITS DESIGNS ARE PROPERTY OF AVW EQUIPMENT CO. & IT IS NOT TO BE USED OR REPRODUCED WITHOUT THE PERMISSION FROM AVW CO.

DRAWN BY

Darpan

CUSTOMER: AVW EQUIPMENT CO.

CHECKED BY

PROJECT: VA3352-17-4141 - Dual Vacuum Arch

QTY

DESCRIPTION: Sq.Tubing [7 Ga.] 4 1/2" x 12" LG

RELEASE DATE

1/19/2021

PART NUMBER: Sq. Tubing [7 Gauge] 4.5 in x 12 in LG

REV#

DIMENSION ARE IN INCHES & PROVIDED PRIOR TO SURFACE TREATMENTS, UNLESS NOTED.

SIZE  
**A**

EST WEIGHT:

SHEET 11 of 17

PATH:L:\Libraries\AVW Components\Tubing\Square Tubing\Sq.Tubing 4.5 in\Sq. Tubing [7 Gauge] 4.5 in x 12 in LG [Sleeve].ipt

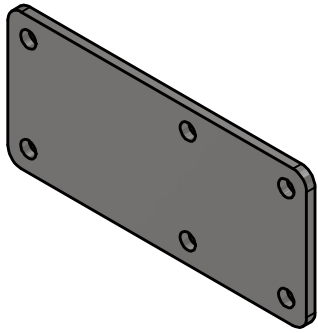
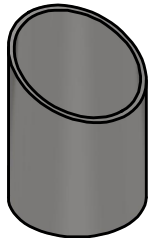
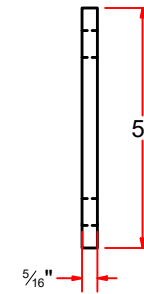
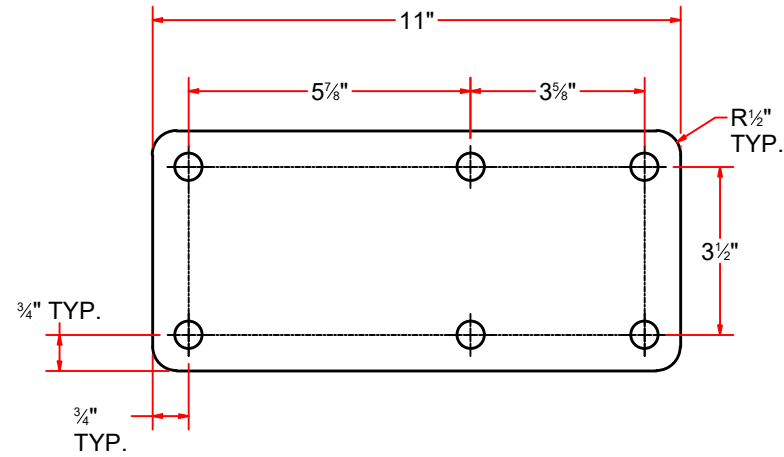
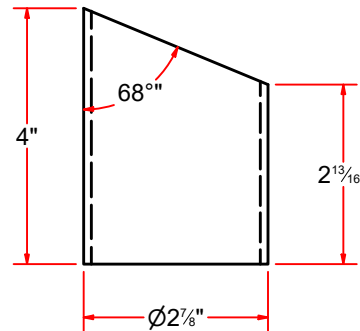


PLATE #5/16" X 5" X 11"



PIPE 2 1/2 SCH 10 X 4" LG



AVW EQUIPMENT CO., INC.  
105 S. 9TH AVENUE  
MAYWOOD, IL 60153  
Tel: 708-343-7738 Fax: 708-343-9065  
WWW.AVWEQUIPMENT.COM

**- COMPANY PROPRIETARY NOTE -**

THIS DRAWING AND ITS DESIGNS ARE PROPERTY OF AVW EQUIPMENT CO. & IT IS NOT TO BE USED OR REPRODUCED WITHOUT THE PERMISSION FROM AVW CO.

DRAWN BY

Darpan

CUSTOMER: AVW EQUIPMENT CO.

CHECKED BY

PROJECT: VA3352-17-4141 - Dual Vacuum Arch

QTY

DESCRIPTION: Plate #5/16" x 11" x 5"

RELEASE DATE

1/19/2021

PART NUMBER: (11 x 5) & ((H 29\_64 x 6) #5\_16

REV#

DIMENSION ARE IN INCHES & PROVIDED PRIOR TO SURFACE TREATMENTS, UNLESS NOTED.

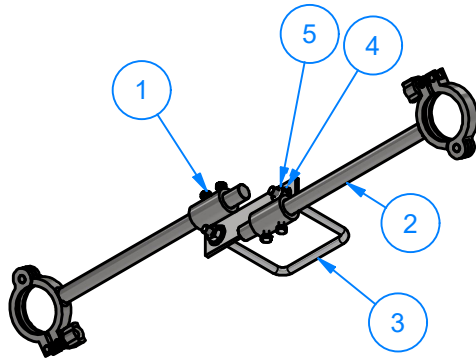
SIZE  
A

EST WEIGHT:

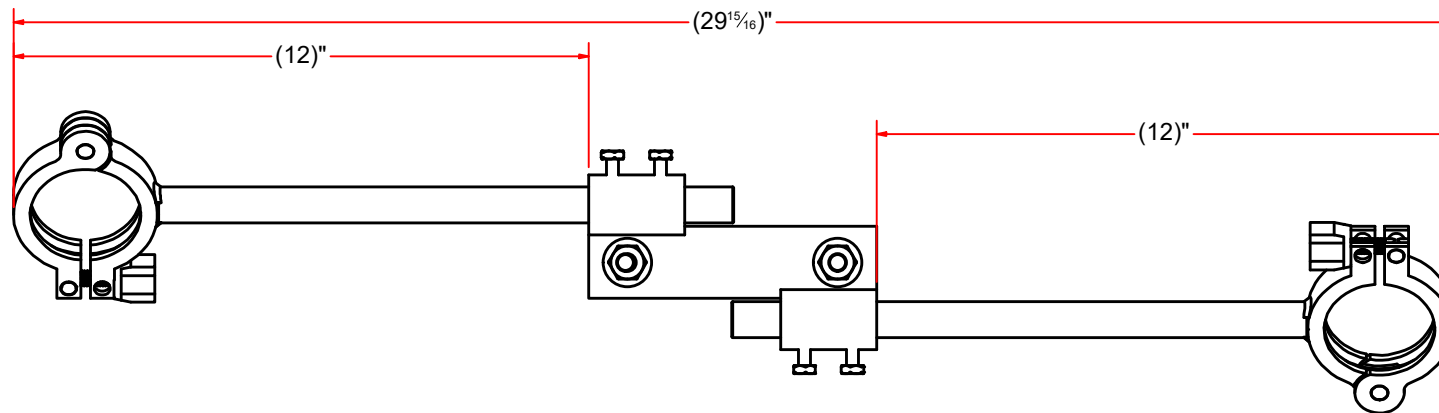
SHEET 12 of 17

PATH:L:\Libraries\AVW Components\Plates\((11 x 5) & ((H 29\_64 x 6) #5\_16).ipt

# DUAL CLAW HOLDER



Parts List		
ITEM	QTY	DESCRIPTION
1	1	R-VA3352W17-001 - Dual Claw Holder U Bolt Plate
2	2	Claw Holder Arm
3	1	Square U Bolt D 3/8" x 4" x 5" LG
4	2	3/8" R Flat Washer
5	2	3/8"-16 18-8ss Heavy Hex Nut



AVW EQUIPMENT CO., INC.  
105 S. 9TH AVENUE  
MAYWOOD, IL 60153  
Tel: 708-343-7738 Fax: 708-343-9065  
WWW.AVWEQUIPMENT.COM

## - COMPANY PROPRIETARY NOTE -

THIS DRAWING AND ITS DESIGNS ARE PROPERTY OF AVW EQUIPMENT CO. & IT IS NOT TO BE USED OR REPRODUCED WITHOUT THE PERMISSION FROM AVW CO.

DRAWN BY

Darpan

CUSTOMER: AVW EQUIPMENT CO.

CHECKED BY

PROJECT: VA3352-17-4141 - Dual Vacuum Arch

QTY

DESCRIPTION: R-VA3352W17 - Dual Claw Holder

RELEASE DATE

1/19/2021

PART NUMBER: R-VA3352W17 - Dual Claw Holder

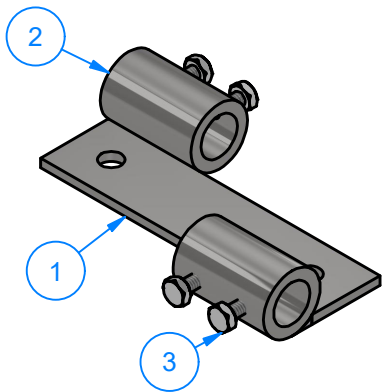
REV#

DIMENSION ARE IN INCHES & PROVIDED PRIOR TO SURFACE TREATMENTS, UNLESS NOTED.

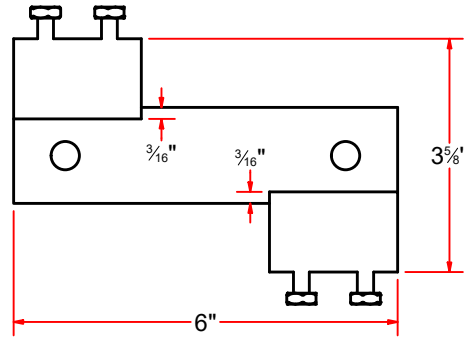
SIZE  
A

EST WEIGHT:

SHEET 13 of 17



Dual Claw Holder U-Bolt Plate



Parts List		
ITEM	QTY	DESCRIPTION
1	1	Plate #3/16" x 1 1/2" x 6"
2	2	Rod O.D. 1 1/4" x I.D. 13/16" x 2" LG
3	4	1/4" - 20 x 0.5" UNC Hex Screw

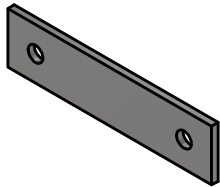
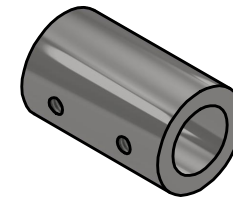
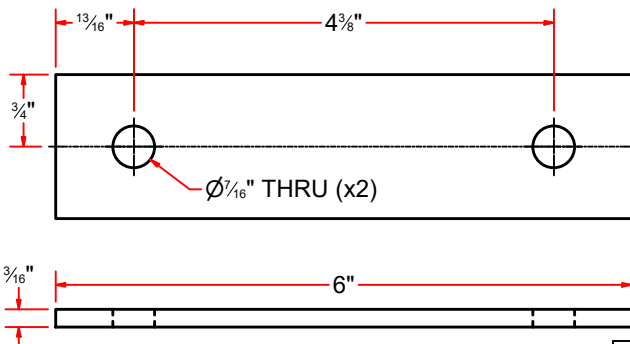
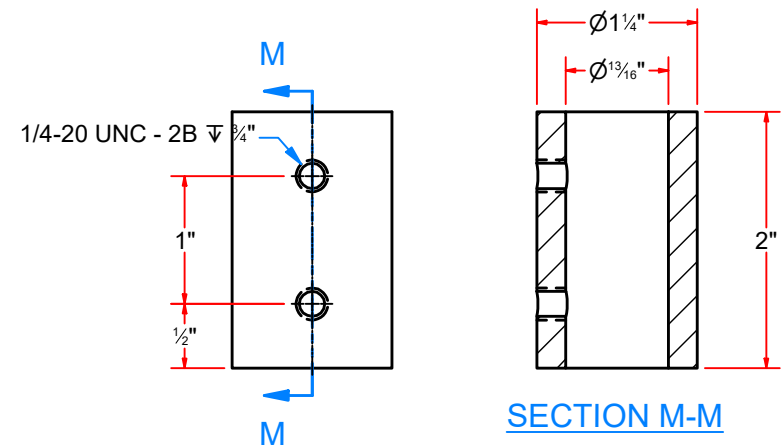


Plate #3/16" x 1 1/2" x 6"



Rod O.D. 1 1/4" x I.D. 13/16" x 2" LG



SECTION M-M



AVW EQUIPMENT CO., INC.  
105 S. 9TH AVENUE  
MAYWOOD, IL 60153  
Tel: 708-343-7738 Fax: 708-343-9065  
WWW.AVWEQUIPMENT.COM

**- COMPANY PROPRIETARY NOTE -**

THIS DRAWING AND ITS DESIGNS ARE PROPERTY OF AVW EQUIPMENT CO. & IT IS NOT TO BE USED OR REPRODUCED WITHOUT THE PERMISSION FROM AVW CO.

DRAWN BY

Darpan

CUSTOMER: AVW EQUIPMENT CO.

CHECKED BY

PROJECT: VA3352-17-4141 - Dual Vacuum Arch

QTY

DESCRIPTION: R-VA3352W17-001 - Dual Claw Holder U Bolt Plate

RELEASE DATE

1/19/2021

PART NUMBER: R-VA3352W17-001

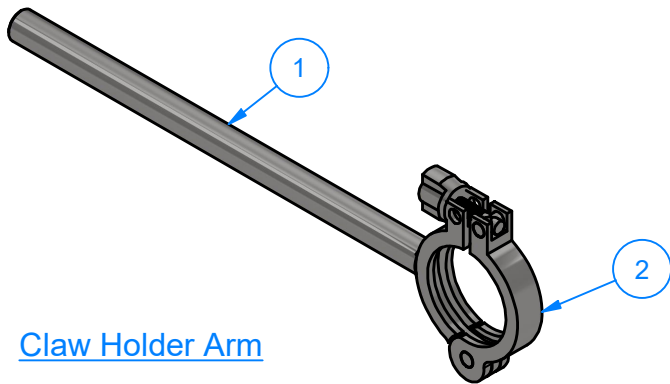
REV#

DIMENSION ARE IN INCHES & PROVIDED PRIOR TO SURFACE TREATMENTS, UNLESS NOTED.

SIZE  
A

EST WEIGHT:

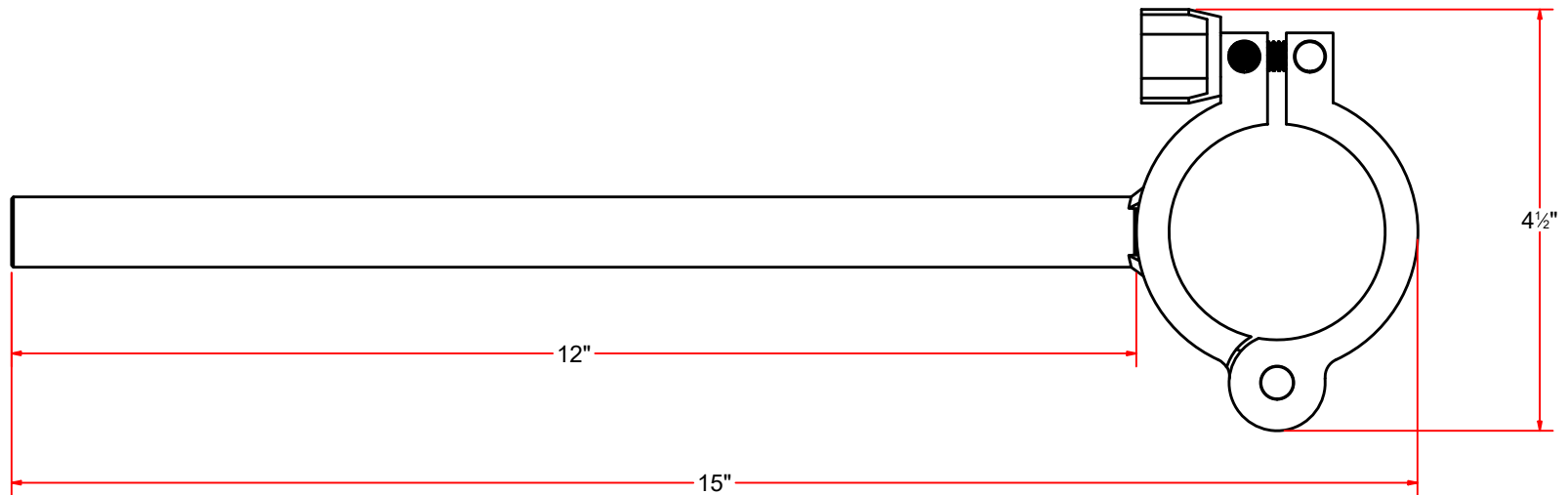
SHEET 14 of 17



Claw Holder Arm

Parts List

ITEM	QTY	DESCRIPTION
1	1	Rod D 3/4" x 12" LG
2	1	2" Sanitary Fitting Clamp



AVW EQUIPMENT CO., INC.  
105 S. 9TH AVENUE  
MAYWOOD, IL 60153  
Tel: 708-343-7738 Fax: 708-343-9065  
WWW.AVWEQUIPMENT.COM

DRAWN BY

Darpan

CUSTOMER: AVW EQUIPMENT CO.

CHECKED BY

PROJECT: VA3352-17-4141 - Dual Vacuum Arch

QTY

DESCRIPTION: Claw Holder Arm

**- COMPANY PROPRIETARY NOTE -**

THIS DRAWING AND ITS DESIGNS ARE PROPERTY OF AVW EQUIPMENT CO. &  
IT IS NOT TO BE USED OR REPRODUCED WITHOUT THE PERMISSION FROM AVW CO.

RELEASE  
DATE

1/19/2021

PART NUMBER: R-VA3352W17-004

REV#

DIMENSION ARE IN INCHES & PROVIDED PRIOR  
TO SURFACE TREATMENTS, UNLESS NOTED.

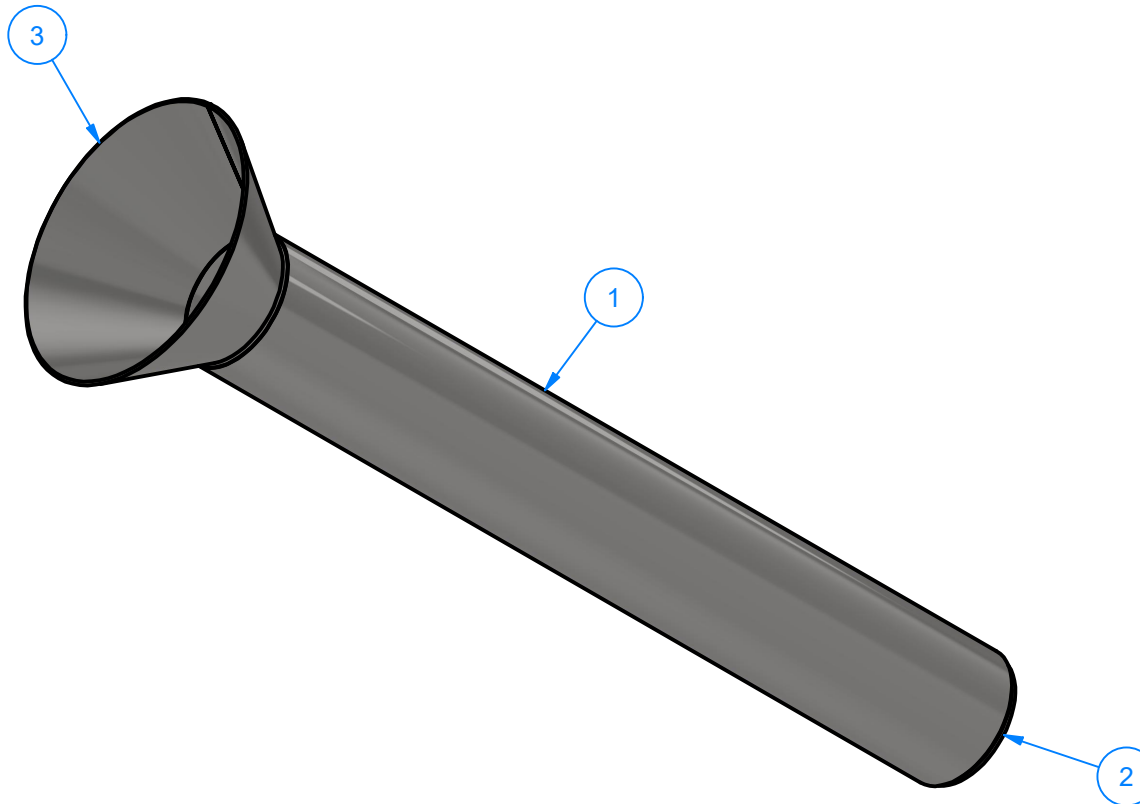
SIZE  
A

EST WEIGHT:

SHEET 15 of 17

PATH:L:\Libraries\Productivity\Vacuum Arches\Claw Holders\Parts\R-VA3352W17-004.iam

# STAINLESS STEEL VACUUM HOLSTER



Parts List		
ITEM	QTY	DESCRIPTION
1	1	2" Pipe, Schedule 10, LG 16"
2	1	Cover Plate #10Ga - 2" Pipe, Sch 10
3	1	Sheet Metal #16Ga



AVW EQUIPMENT CO., INC.  
105 S. 9TH AVENUE  
MAYWOOD, IL 60153  
Tel: 708-343-7738 Fax: 708-343-9065  
WWW.AVWEQUIPMENT.COM

DRAWN BY

Darpan

CUSTOMER: AVW EQUIPMENT CO.

CHECKED BY

PROJECT: VA3352-17-4141 - Dual Vacuum Arch

QTY

DESCRIPTION: Stainless Steel Vacuum Holster

## - COMPANY PROPRIETARY NOTE -

THIS DRAWING AND ITS DESIGNS ARE PROPERTY OF AVW EQUIPMENT CO. &  
IT IS NOT TO BE USED OR REPRODUCED WITHOUT THE PERMISSION FROM AVW CO.

RELEASE  
DATE

1/19/2021

PART NUMBER: Vacuum Holster #1

REV#

DIMENSION ARE IN INCHES & PROVIDED PRIOR  
TO SURFACE TREATMENTS, UNLESS NOTED.

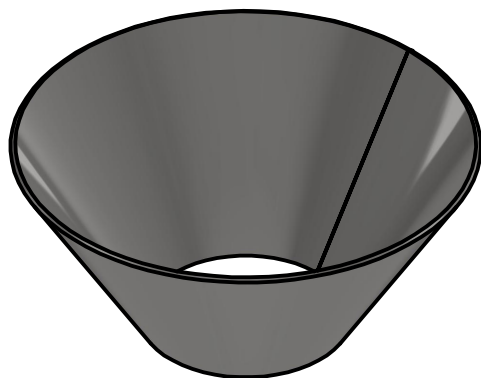
SIZE  
A

EST WEIGHT:

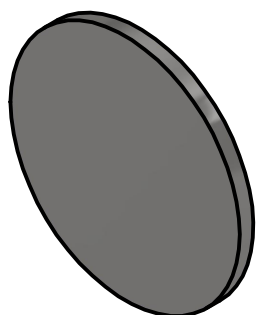
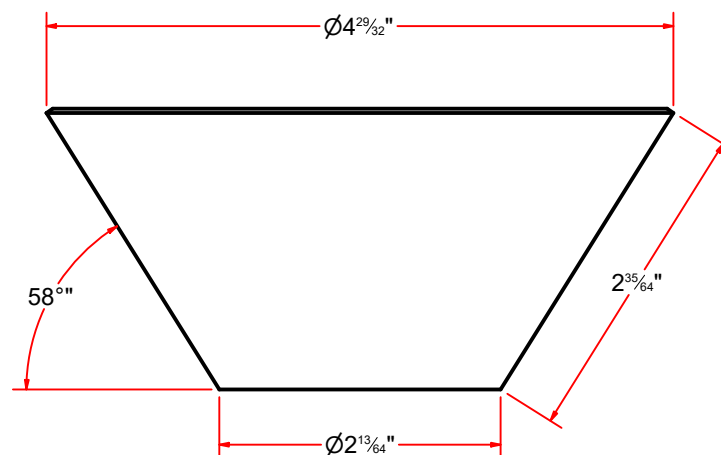
SHEET 16 of 17

PATH:L:\Designs\Product Lines\Vacuum Arches\Vacuum\SS Vacuum Holster\SS Vacuum Holster.iam

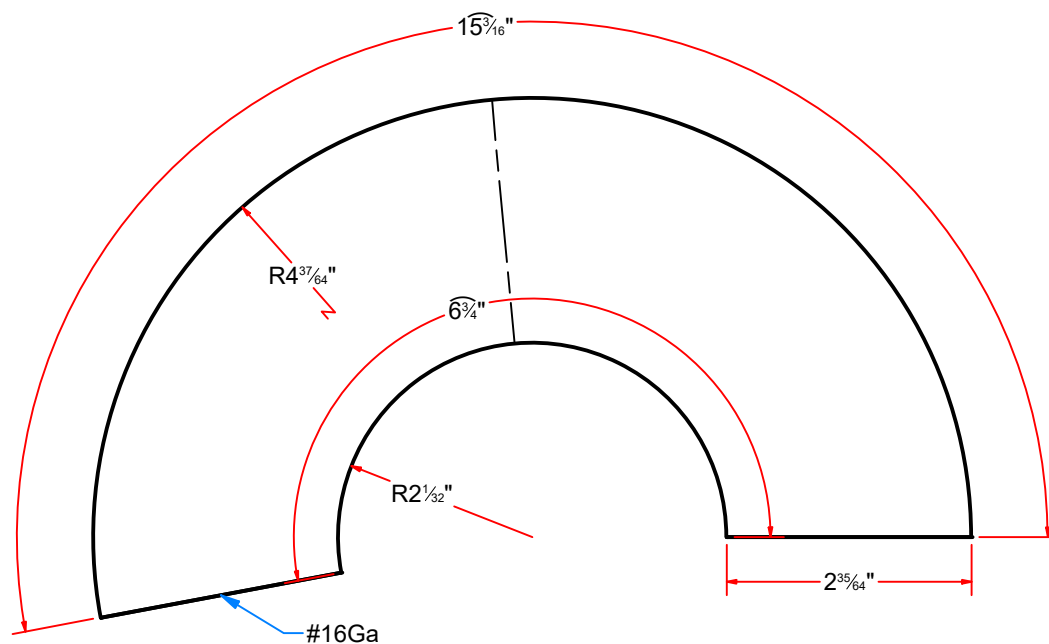
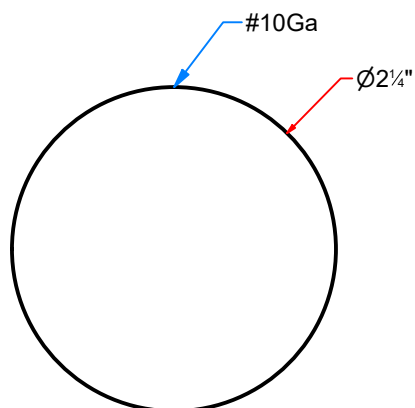




Sheet Metal #16Ga



Cover Plate #10Ga - 2" Pipe, Sch 10



AVW EQUIPMENT CO., INC.  
105 S. 9TH AVENUE  
MAYWOOD, IL 60153  
Tel: 708-343-7738 Fax: 708-343-9065  
WWW.AVWEQUIPMENT.COM

**- COMPANY PROPRIETARY NOTE -**

THIS DRAWING AND ITS DESIGNS ARE PROPERTY OF AVW EQUIPMENT CO. & IT IS NOT TO BE USED OR REPRODUCED WITHOUT THE PERMISSION FROM AVW CO.

DRAWN BY

Darpan

CUSTOMER: AVW EQUIPMENT CO.

CHECKED BY

PROJECT: VA3352-17-4141 - Dual Vacuum Arch

QTY

DESCRIPTION: Cover Plate #10Ga - 2" Pipe, Sch 10

RELEASE DATE

1/19/2021

PART NUMBER: Cover Plate #10Ga - Pipe 2in Sch10

REV#

DIMENSION ARE IN INCHES & PROVIDED PRIOR TO SURFACE TREATMENTS, UNLESS NOTED.

SIZE  
A

EST WEIGHT:

SHEET 17 of 17