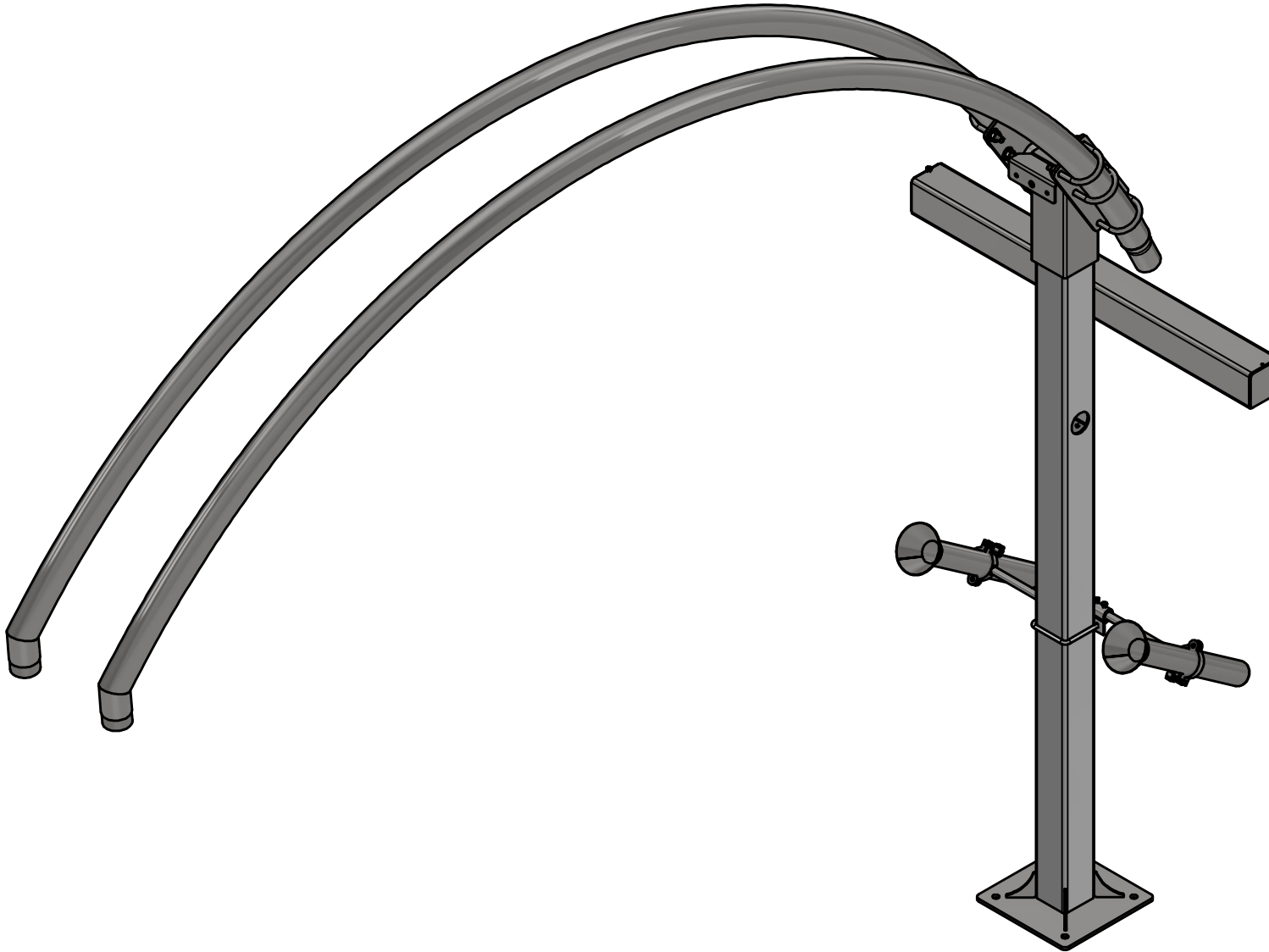


VA3352-17- Dual Vacuum Arch



AVW EQUIPMENT CO., INC.
105 S. 9TH AVENUE
MAYWOOD, IL 60153
Tel: 708-343-7738 Fax: 708-343-9065
WWW.AVWEQUIPMENT.COM

- COMPANY PROPRIETARY NOTE -

THIS DRAWING AND ITS DESIGNS ARE PROPERTY OF AVW EQUIPMENT CO. &
IT IS NOT TO BE USED OR REPRODUCED WITHOUT THE PERMISSION FROM AVW CO.

DRAWN BY

Ljubomir

CUSTOMER:

CHECKED BY

PROJECT:

QTY

DESCRIPTION: VA3352-17 - Dual Vacuum Arch

RELEASE
DATE

1/14/2021

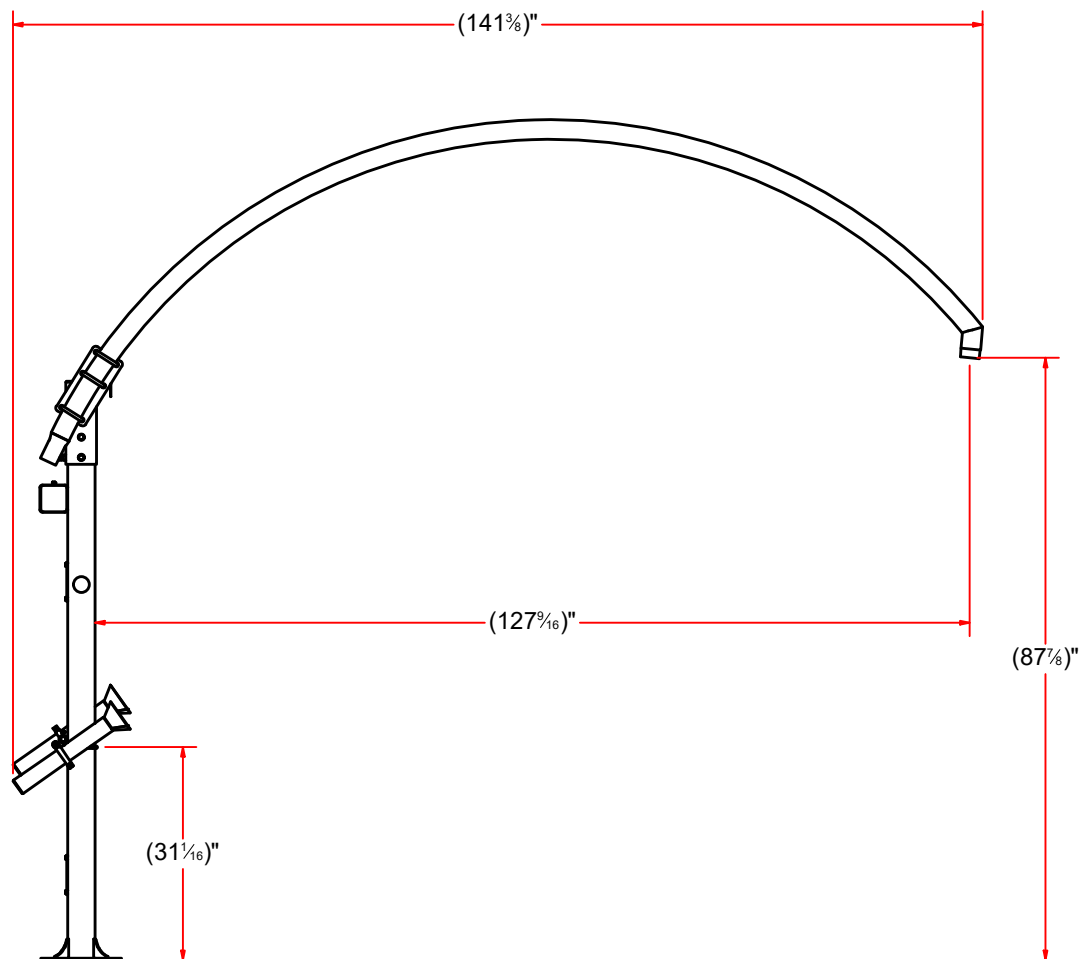
PART NUMBER: VA3352-17 - Dual Vacuum Arch [Rev001] REV#

DIMENSION ARE IN INCHES & PROVIDED PRIOR
TO SURFACE TREATMENTS, UNLESS NOTED.

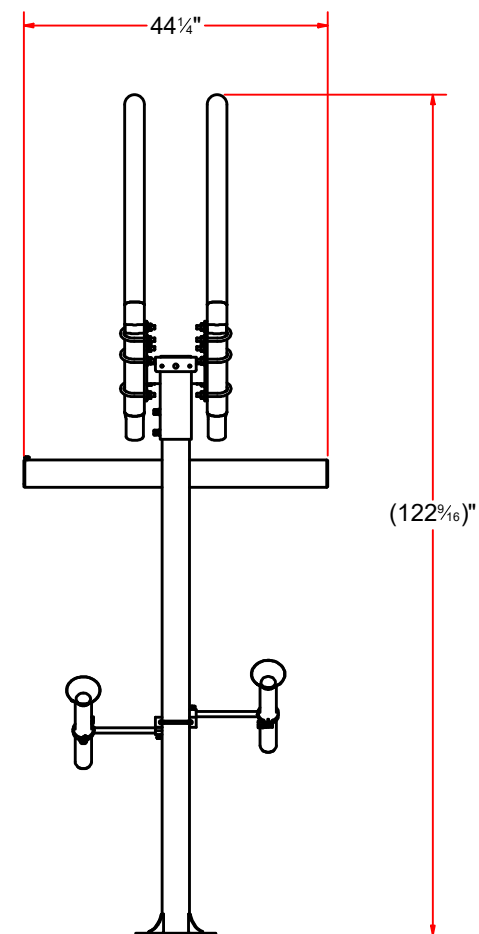
SIZE
A

EST WEIGHT:

SHEET 1 of 18



SIDE VIEW



FRONT VIEW



AVW EQUIPMENT CO., INC.
105 S. 9TH AVENUE
MAYWOOD, IL 60153
Tel: 708-343-7738 Fax: 708-343-9065
WWW.AVWEQUIPMENT.COM

- COMPANY PROPRIETARY NOTE -

THIS DRAWING AND ITS DESIGNS ARE PROPERTY OF AVW EQUIPMENT CO. & IT IS NOT TO BE USED OR REPRODUCED WITHOUT THE PERMISSION FROM AVW CO.

DRAWN BY

Ljubomir

CUSTOMER:

CHECKED BY

PROJECT:

QTY

DESCRIPTION: VA3352-17 - Dual Vacuum Arch

RELEASE
DATE

1/14/2021

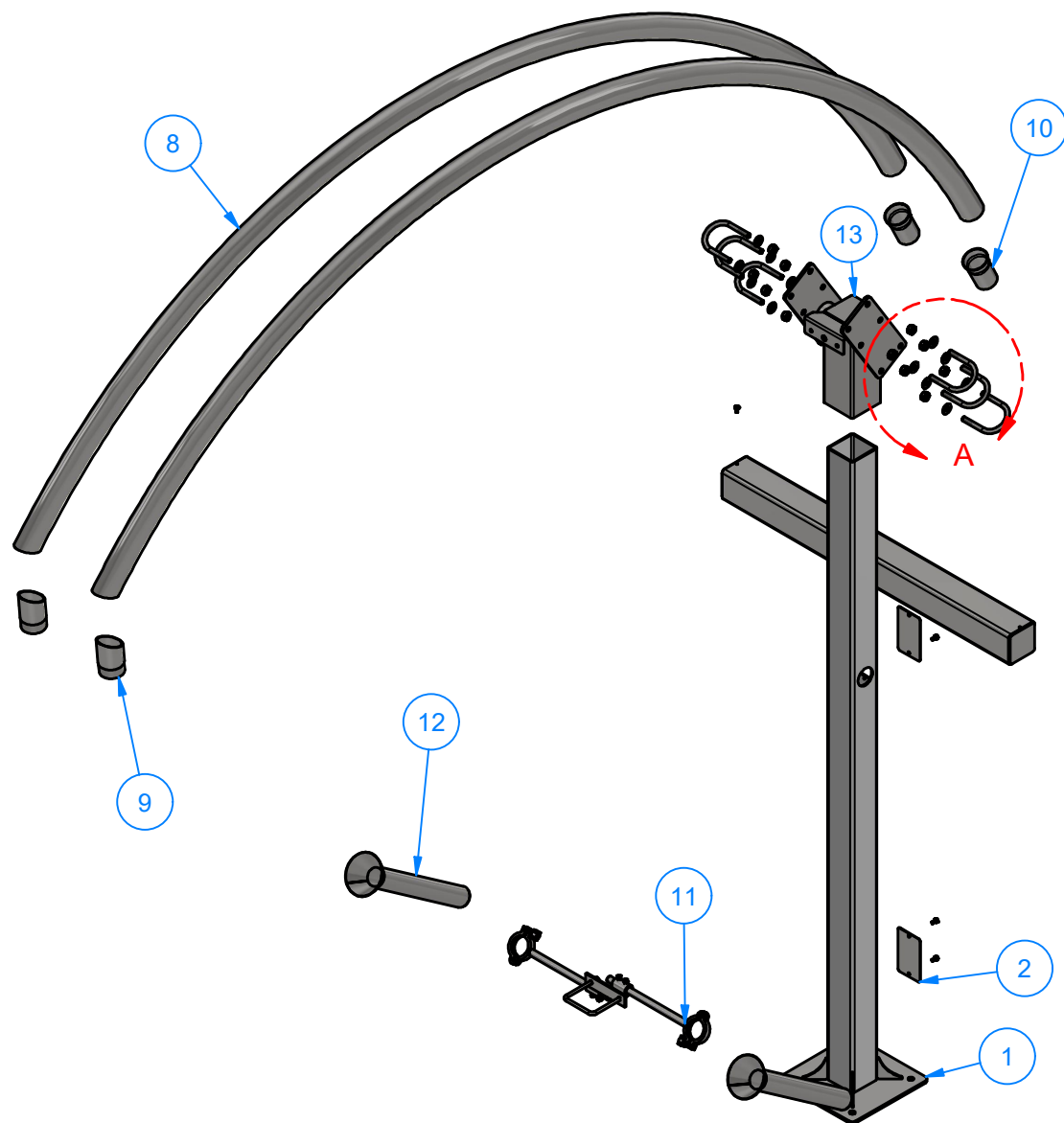
PART NUMBER: VA3352-17 - Dual Vacuum Arch [Rev001] REV#

DIMENSION ARE IN INCHES & PROVIDED PRIOR
TO SURFACE TREATMENTS, UNLESS NOTED.

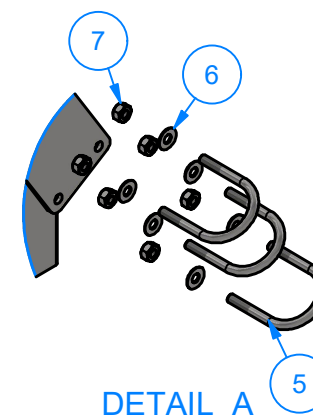
SIZE
A

EST WEIGHT:

SHEET 2 of 18



Parts List		
ITEM	QTY	DESCRIPTION
1	1	Dual Vacuum Arch Leg 84" H
2	2	Sheet Metal #14Ga x 3 3/8" x 5 3/4"
3	5	1/4" - 20 x 0.5" UNC Hex Screw
5	6	Round U-Bolt 1/2" D x 3" W x 4 1/2" LG
6	12	1/2" Flat Washer
7	12	Hex Nut - 1/2-13
8	2	Pipe 2 1/2" SCH10 x 160" LG
9	2	Hose Adapter w/ 2" Half Coupling
10	2	Pipe Reducer -> 2-1/2" to 2" Pipe
11	1	R-VA3352W17 - Dual Claw Holder
12	2	Stainless Steel Vacuum Holster
13	1	DUAL VACUUM ARCH SLEEVE



AVW EQUIPMENT CO., INC.
105 S. 9TH AVENUE
MAYWOOD, IL 60153
Tel: 708-343-7738 Fax: 708-343-9065
WWW.AVWEQUIPMENT.COM

- COMPANY PROPRIETARY NOTE -

THIS DRAWING AND ITS DESIGNS ARE PROPERTY OF AVW EQUIPMENT CO. & IT IS NOT TO BE USED OR REPRODUCED WITHOUT THE PERMISSION FROM AVW CO.

DRAWN BY

Ljubomir

CUSTOMER:

CHECKED BY

PROJECT:

QTY

DESCRIPTION: VA3352-17 - Dual Vacuum Arch

RELEASE DATE

1/14/2021

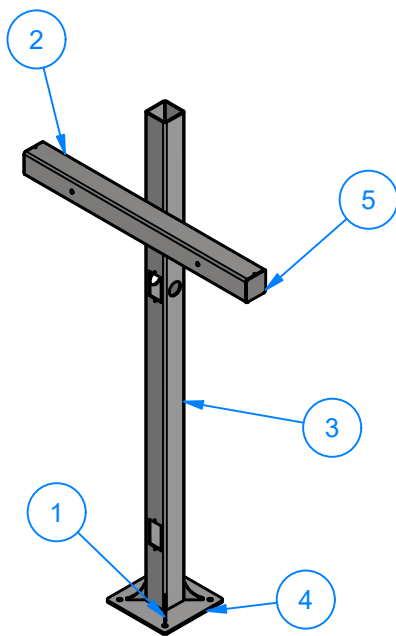
PART NUMBER: VA3352-17 - Dual Vacuum Arch [Rev001] REV#

DIMENSION ARE IN INCHES & PROVIDED PRIOR TO SURFACE TREATMENTS, UNLESS NOTED.

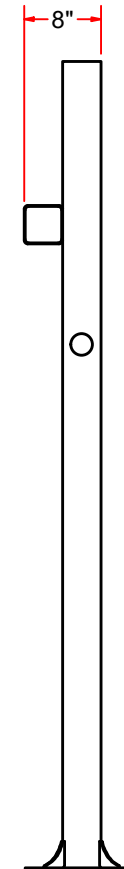
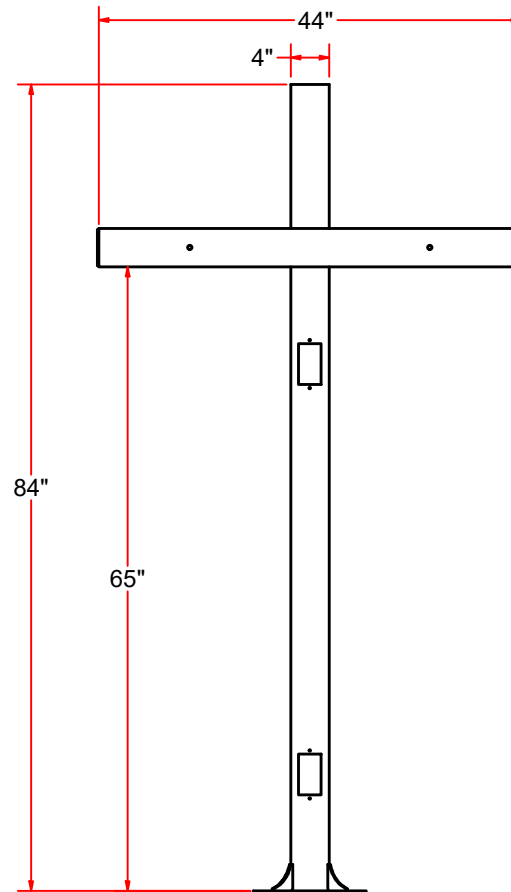
SIZE
A

EST WEIGHT:

SHEET 3 of 18



Dual VAcuum Arch Leg 84"



Parts List		
ITEM	QTY	DESCRIPTION
1	4	Gusset #3/16" x 2-3_4x2-3_4
2	1	Sq. Tube #3/16" x 4" x 44" SS
3	1	Sq. Tube #7Ga. x 4" x 4" x 84" LG.
4	1	PLATE 11_3/4" X 11_3/4" #5_16
5	2	Cap - Sheet Metal #10Ga x 3 7/8" x 3 7/8"



AVW EQUIPMENT CO., INC.
105 S. 9TH AVENUE
MAYWOOD, IL 60153
Tel: 708-343-7738 Fax: 708-343-9065
WWW.AVWEQUIPMENT.COM

- COMPANY PROPRIETARY NOTE -

THIS DRAWING AND ITS DESIGNS ARE PROPERTY OF AVW EQUIPMENT CO. & IT IS NOT TO BE USED OR REPRODUCED WITHOUT THE PERMISSION FROM AVW CO.

DRAWN BY

Ljubomir

CUSTOMER:

CHECKED BY

PROJECT:

QTY

DESCRIPTION: Dual Vacuum Arch Leg 84" H

RELEASE DATE

1/14/2021

PART NUMBER: VA3352A-17 - 84in Vacuum Leg Assembly REV#

DIMENSION ARE IN INCHES & PROVIDED PRIOR TO SURFACE TREATMENTS, UNLESS NOTED.

SIZE
A

EST WEIGHT:

SHEET 4 of 18

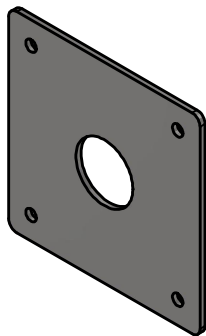
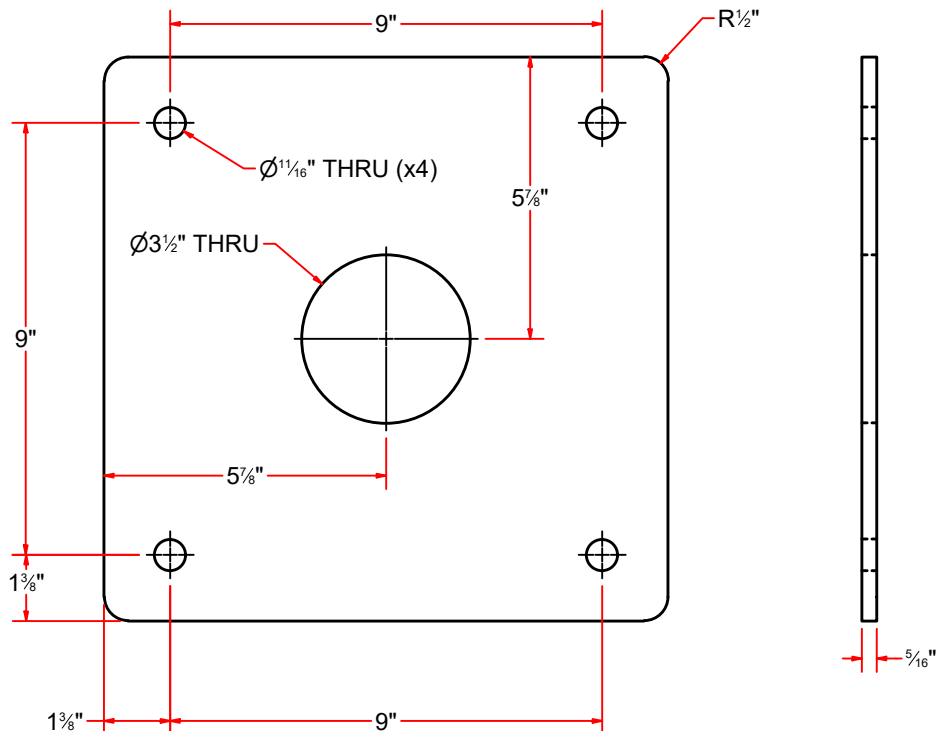
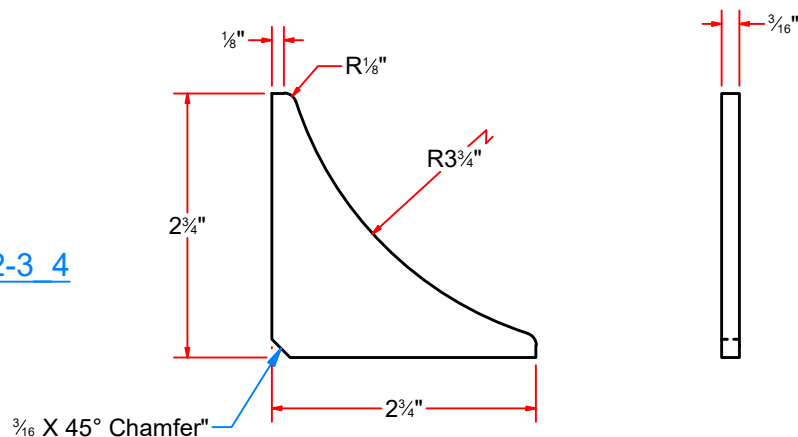


PLATE 11 3/4" X 11 3/4 #5 16



Gusset #3/16" x 2-3 4x2-3 4



AVW EQUIPMENT CO., INC.
105 S. 9TH AVENUE
MAYWOOD, IL 60153
Tel: 708-343-7738 Fax: 708-343-9065
WWW.AVWEQUIPMENT.COM

- COMPANY PROPRIETARY NOTE -

THIS DRAWING AND ITS DESIGNS ARE PROPERTY OF AVW EQUIPMENT CO. & IT IS NOT TO BE USED OR REPRODUCED WITHOUT THE PERMISSION FROM AVW CO.

DRAWN BY

Ljubomir

CUSTOMER:

CHECKED BY

PROJECT:

QTY

DESCRIPTION: PLATE 11_3/4" X 11_3/4 #5_16

RELEASE DATE

1/14/2021

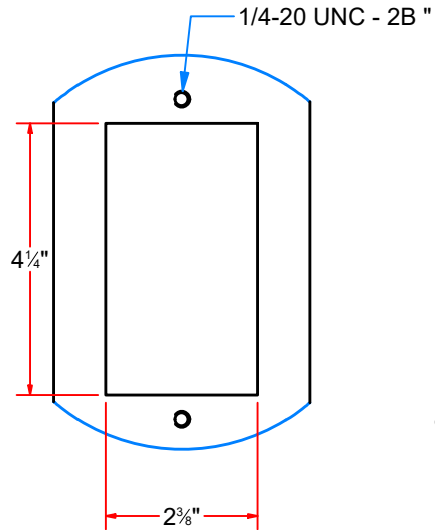
PART NUMBER: (11-3_4 X 11-3_4) & (H 5_8 X 4) # 5_16 REV#

DIMENSION ARE IN INCHES & PROVIDED PRIOR TO SURFACE TREATMENTS, UNLESS NOTED.

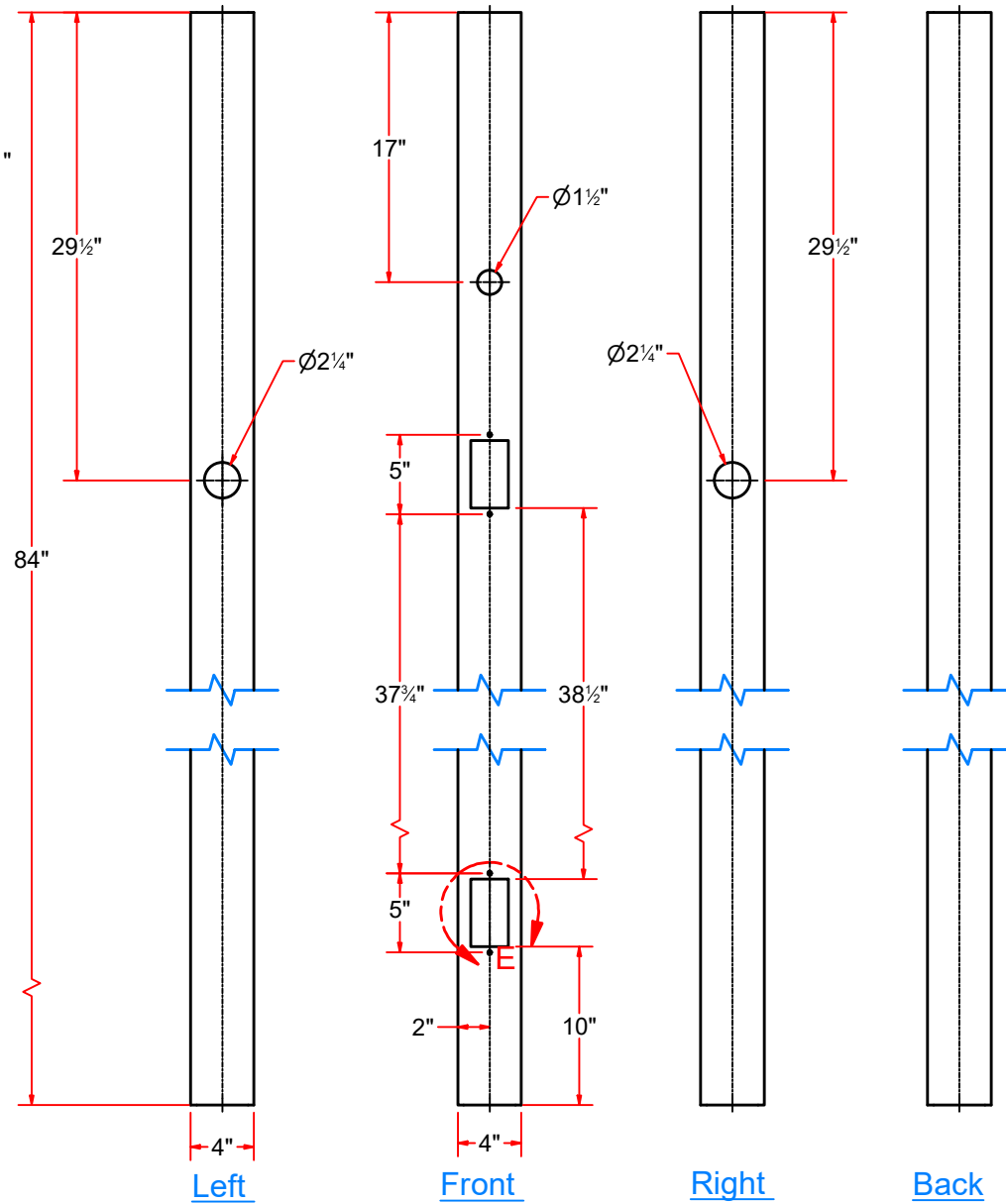
SIZE
A

EST WEIGHT:

SHEET 5 of 18



DETAIL E



Sq. Tube #7Ga. x 4" x 4" x 84" LG.



AVW EQUIPMENT CO., INC.
105 S. 9TH AVENUE
MAYWOOD, IL 60153
Tel: 708-343-7738 Fax: 708-343-9065
WWW.AVWEQUIPMENT.COM

- COMPANY PROPRIETARY NOTE -

THIS DRAWING AND ITS DESIGNS ARE PROPERTY OF AVW EQUIPMENT CO. & IT IS NOT TO BE USED OR REPRODUCED WITHOUT THE PERMISSION FROM AVW CO.

DRAWN BY

Ljubomir

CUSTOMER:

CHECKED BY

PROJECT:

QTY

DESCRIPTION: Sq. Tube #7Ga. x 4" x 4" x 84" LG.

RELEASE DATE

1/14/2021

PART NUMBER: VA3352A-17 - Part001

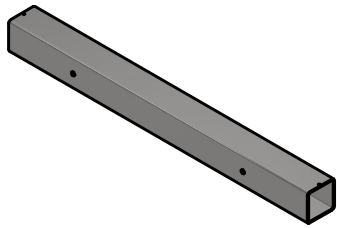
REV#

DIMENSION ARE IN INCHES & PROVIDED PRIOR TO SURFACE TREATMENTS, UNLESS NOTED.

SIZE
A

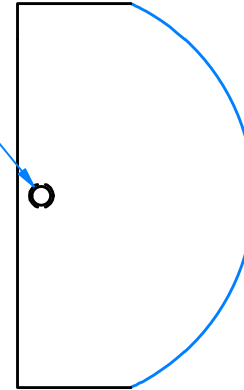
EST WEIGHT:

SHEET 6 of 18

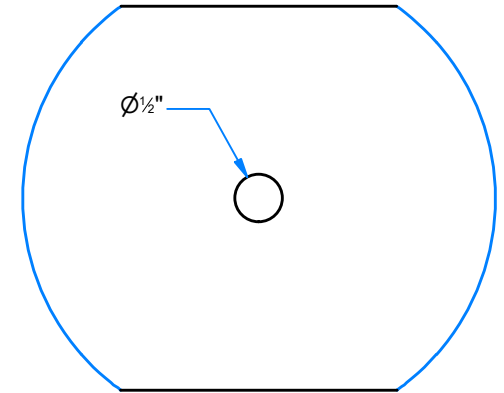


Sq. Tube #3/16" x 4" x 44" SS

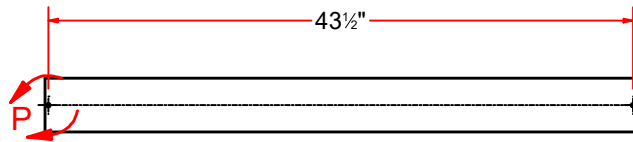
1/4-20 UNC - 2B "



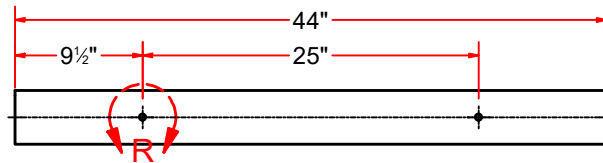
DETAIL P



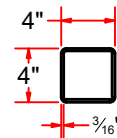
DETAIL R



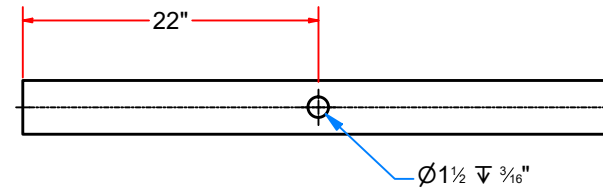
Top



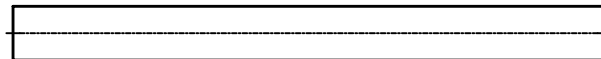
Front



Right



Back



Bottom



AVW EQUIPMENT CO., INC.
105 S. 9TH AVENUE
MAYWOOD, IL 60153
Tel: 708-343-7738 Fax: 708-343-9065
WWW.AVWEQUIPMENT.COM

- COMPANY PROPRIETARY NOTE -

THIS DRAWING AND ITS DESIGNS ARE PROPERTY OF AVW EQUIPMENT CO. & IT IS NOT TO BE USED OR REPRODUCED WITHOUT THE PERMISSION FROM AVW CO.

DRAWN BY

Ljubomir

CUSTOMER:

CHECKED BY

PROJECT:

QTY

DESCRIPTION: Sq. Tube #3/16" x 4" x 44" SS

RELEASE DATE

1/14/2021

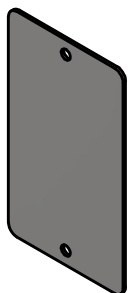
PART NUMBER: Top Crossbar - Sq. Tube #3_16 x 4 x 44 SS REV#

DIMENSION ARE IN INCHES & PROVIDED PRIOR TO SURFACE TREATMENTS, UNLESS NOTED.

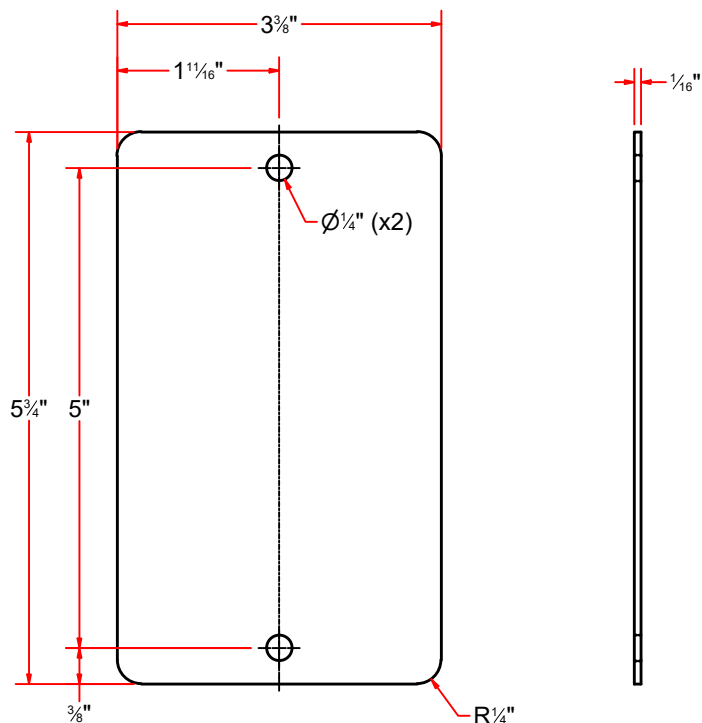
SIZE
A

EST WEIGHT:

SHEET 7 of 18



Sheet Metal #14Ga x 3 3/8" x 5 3/4"



AVW EQUIPMENT CO., INC.
105 S. 9TH AVENUE
MAYWOOD, IL 60153
Tel: 708-343-7738 Fax: 708-343-9065
WWW.AVWEQUIPMENT.COM

- COMPANY PROPRIETARY NOTE -

THIS DRAWING AND ITS DESIGNS ARE PROPERTY OF AVW EQUIPMENT CO. &
IT IS NOT TO BE USED OR REPRODUCED WITHOUT THE PERMISSION FROM AVW CO.

DRAWN BY

Ljubomir

CUSTOMER:

CHECKED BY

PROJECT:

QTY

DESCRIPTION: Sheet Metal #14Ga x 3 3/8" x 5 3/4"

RELEASE
DATE

1/14/2021

PART NUMBER: Sheet Metal #14Ga x 3 3_8 x 5 3_4

REV#

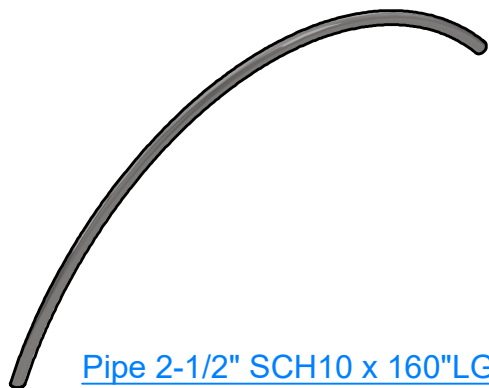
DIMENSION ARE IN INCHES & PROVIDED PRIOR
TO SURFACE TREATMENTS, UNLESS NOTED.

SIZE
A

EST WEIGHT:

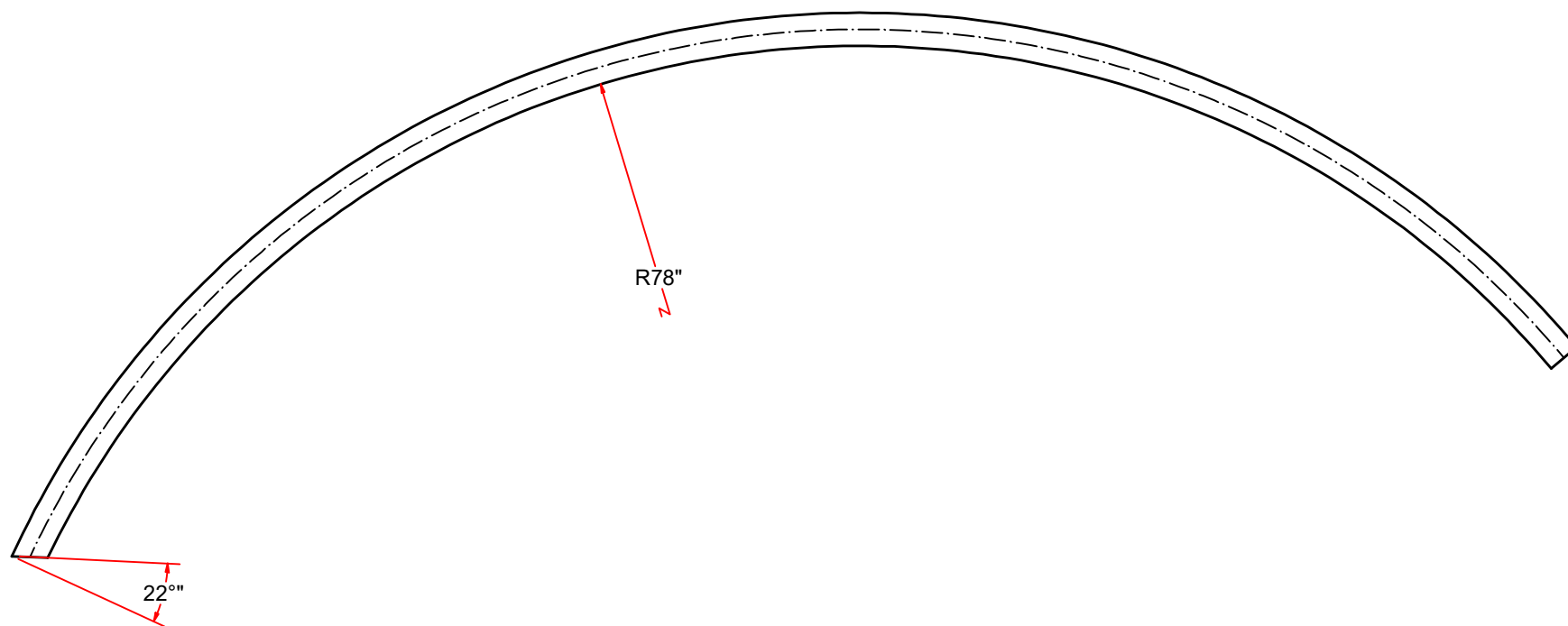
SHEET 8 of 18

PATH:L:\Libraries\AVW Components\Plates\Sheet Metal #14Ga x 3 3_8 x 5 3_4.ipt



Flat Pipe is 160in LG.

After bent pipe is cut 22 degrees towards inside to make sure it matches the hose adapter



AVW EQUIPMENT CO., INC.
105 S. 9TH AVENUE
MAYWOOD, IL 60153
Tel: 708-343-7738 Fax: 708-343-9065
WWW.AVWEQUIPMENT.COM

- COMPANY PROPRIETARY NOTE -

THIS DRAWING AND ITS DESIGNS ARE PROPERTY OF AVW EQUIPMENT CO. & IT IS NOT TO BE USED OR REPRODUCED WITHOUT THE PERMISSION FROM AVW CO.

DRAWN BY

Ljubomir

CUSTOMER:

CHECKED BY

PROJECT:

QTY

DESCRIPTION: Pipe 2 1/2" SCH10 x 160" LG

RELEASE DATE

1/14/2021

PART NUMBER: Pipe 2 1_2 SCH10 x 160 LG

REV#

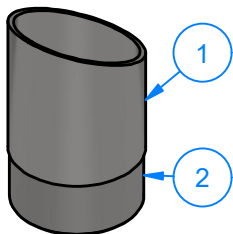
DIMENSION ARE IN INCHES & PROVIDED PRIOR TO SURFACE TREATMENTS, UNLESS NOTED.

SIZE
A

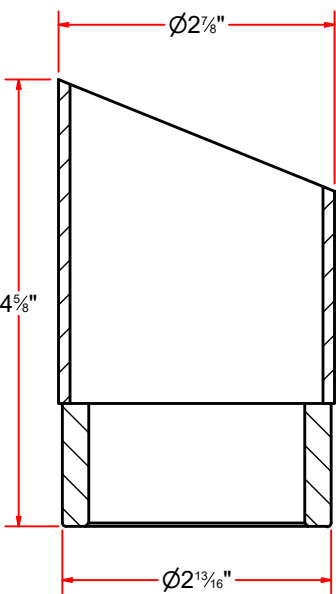
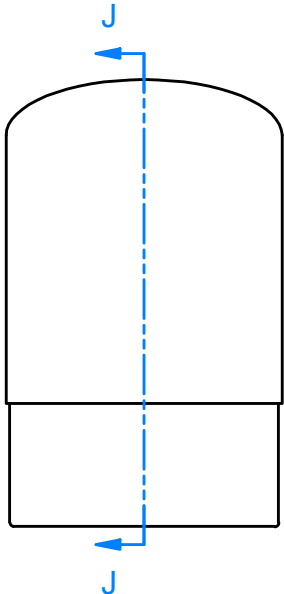
EST WEIGHT:

SHEET 9 of 18

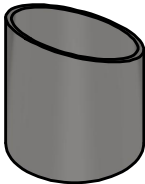
PATH:L:\Libraries\AVW Components\Pipes\Vacuum Pipes\Pipe 2 1_2 SCH10 x 160 LG.ipt



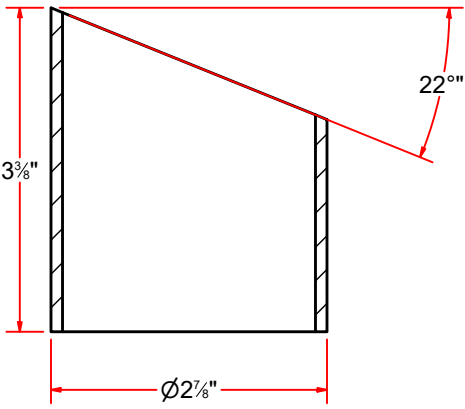
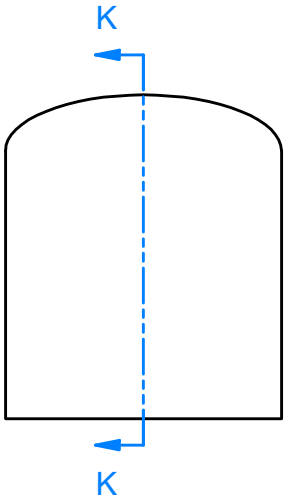
Hose Adapter with 2" Coupling



SECTION J-J



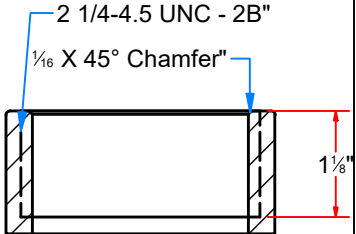
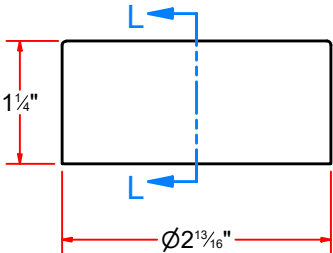
2-1/2" Pipe, Sch10 x 3-3/8



SECTION K-K



2" Half Coupling



SECTION L-L

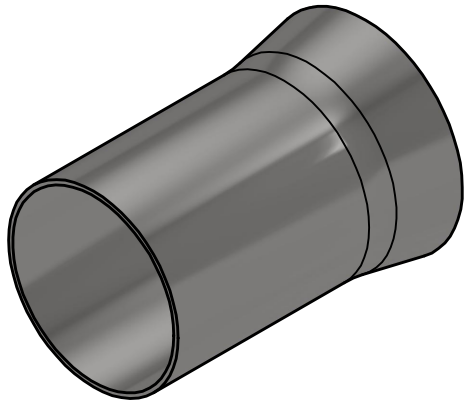
Parts List		
ITEM	QTY	DESCRIPTION
1	1	2 1/2" Pipe Sch10 x 3 3/8" LG.
2	1	2" Half Coupling



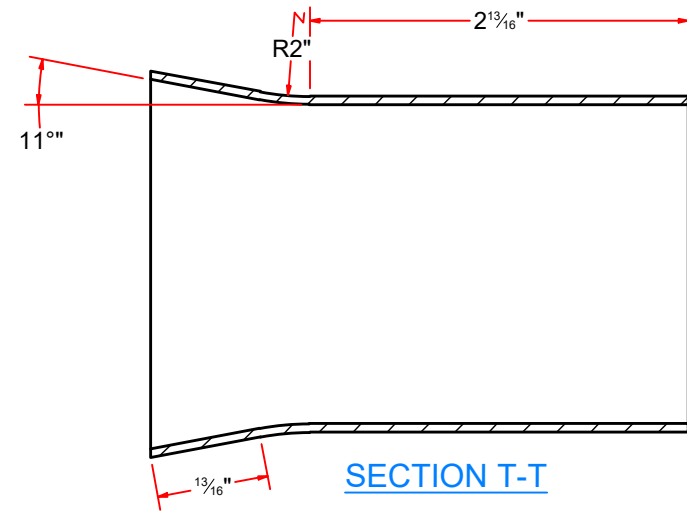
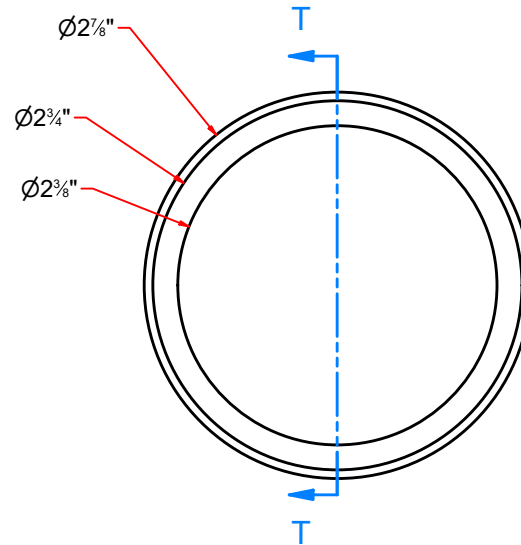
AVW EQUIPMENT CO., INC.
105 S. 9TH AVENUE
MAYWOOD, IL 60153
Tel: 708-343-7738 Fax: 708-343-9065
WWW.AVWEQUIPMENT.COM

- COMPANY PROPRIETARY NOTE -
THIS DRAWING AND ITS DESIGNS ARE PROPERTY OF AVW EQUIPMENT CO. &
IT IS NOT TO BE USED OR REPRODUCED WITHOUT THE PERMISSION FROM AVW CO.

DRAWN BY	Ljubomir	CUSTOMER:	
CHECKED BY		PROJECT:	
QTY		DESCRIPTION: Hose Adapter w/ 2" Half Coupling	
RELEASE DATE	1/14/2021	PART NUMBER: 2in Hose Adapter with Coupling	REV#
DIMENSION ARE IN INCHES & PROVIDED PRIOR TO SURFACE TREATMENTS, UNLESS NOTED.		SIZE A	EST WEIGHT:
		SHEET 10 of 18	



Pipe Reducer -> 2-1/2" to 2" Pipe



SECTION T-T



AVW EQUIPMENT CO., INC.
105 S. 9TH AVENUE
MAYWOOD, IL 60153
Tel: 708-343-7738 Fax: 708-343-9065
WWW.AVWEQUIPMENT.COM

- COMPANY PROPRIETARY NOTE -

THIS DRAWING AND ITS DESIGNS ARE PROPERTY OF AVW EQUIPMENT CO. &
IT IS NOT TO BE USED OR REPRODUCED WITHOUT THE PERMISSION FROM AVW CO.

DRAWN BY

Ljubomir

CUSTOMER:

CHECKED BY

PROJECT:

QTY

DESCRIPTION: Tubing 2 1/2" OD x .063" Wall x 4" LG

RELEASE
DATE

1/14/2021

PART NUMBER: 2-1_2 Pipe Hose Reducer

REV#

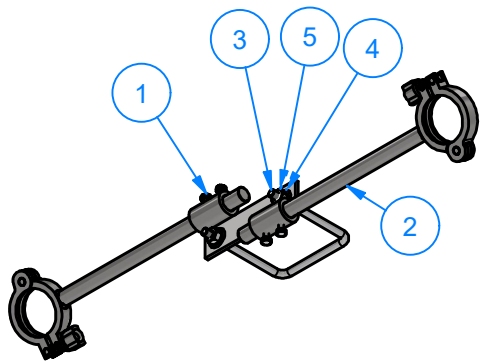
DIMENSION ARE IN INCHES & PROVIDED PRIOR
TO SURFACE TREATMENTS, UNLESS NOTED.

SIZE
A

EST WEIGHT:

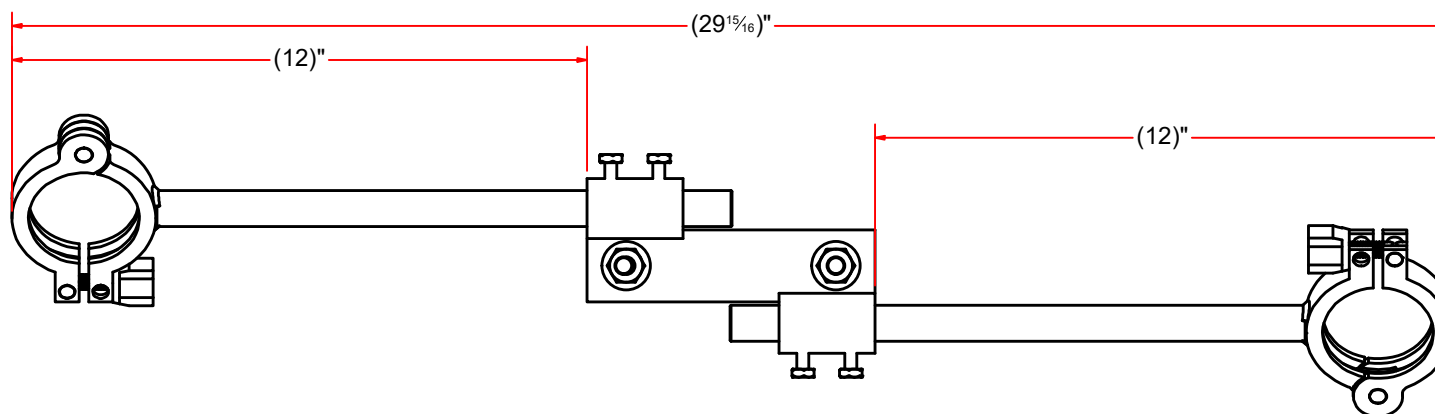
SHEET 11 of 18

PATH:L:\Libraries\AVW Components\Vacuum Pipe Reducers\2-1_2 Pipe Hose Reducer.ipt



Dual Claw Holder

Parts List		
ITEM	QTY	DESCRIPTION
1	1	VA3352W17-001 - Dual Claw Holder U Bolt Plate
2	2	Claw Holder Arm
3	1	Square U Bolt D 3/8" x 4" x 5" LG
4	2	3/8" Flat Washer
5	2	3/8"-16 18-8ss Heavy Hex Nut

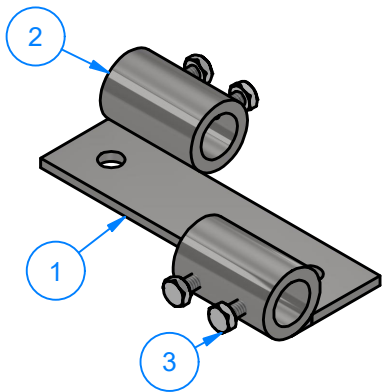


AVW EQUIPMENT CO., INC.
105 S. 9TH AVENUE
MAYWOOD, IL 60153
Tel: 708-343-7738 Fax: 708-343-9065
WWW.AVWEQUIPMENT.COM

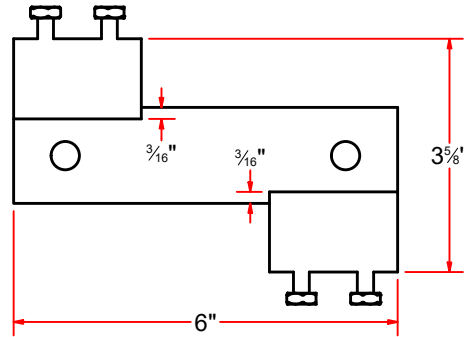
- COMPANY PROPRIETARY NOTE -

THIS DRAWING AND ITS DESIGNS ARE PROPERTY OF AVW EQUIPMENT CO. & IT IS NOT TO BE USED OR REPRODUCED WITHOUT THE PERMISSION FROM AVW CO.

DRAWN BY	Ljubomir	CUSTOMER:	
CHECKED BY		PROJECT:	
QTY		DESCRIPTION: R-VA3352W17 - Dual Claw Holder	
RELEASE DATE	1/14/2021	PART NUMBER: R-VA3352W17 - Dual Claw Holder	REV#
DIMENSION ARE IN INCHES & PROVIDED PRIOR TO SURFACE TREATMENTS, UNLESS NOTED.		SIZE A	EST WEIGHT:
			SHEET 12 of 18



Dual Claw Holder U-Bolt Plate



Parts List		
ITEM	QTY	DESCRIPTION
1	1	Plate #3/16" x 1 1/2" x 6"
2	2	Rod O.D. 1 1/4" x I.D. 13/16" x 2" LG
3	4	1/4" - 20 x 0.5" UNC Hex Screw

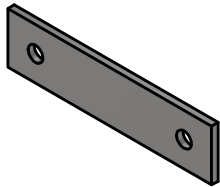
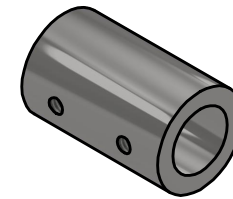
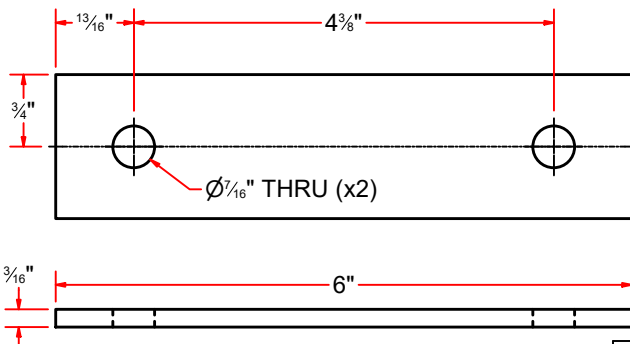
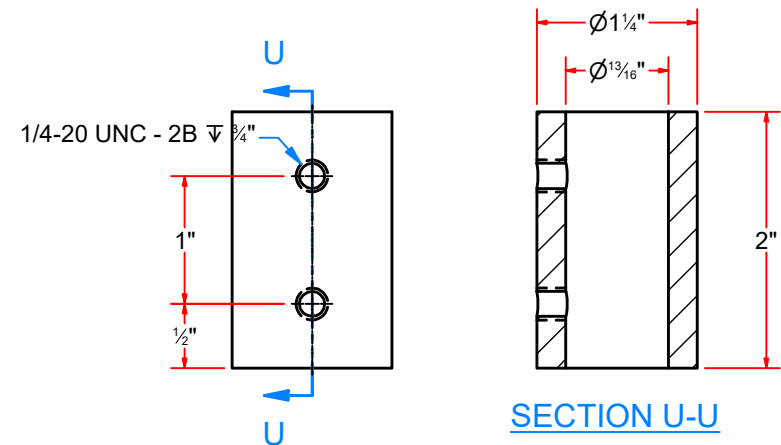


Plate #3/16" x 1 1/2" x 6"



Rod O.D. 1 1/4" x I.D. 13/16" x 2" LG

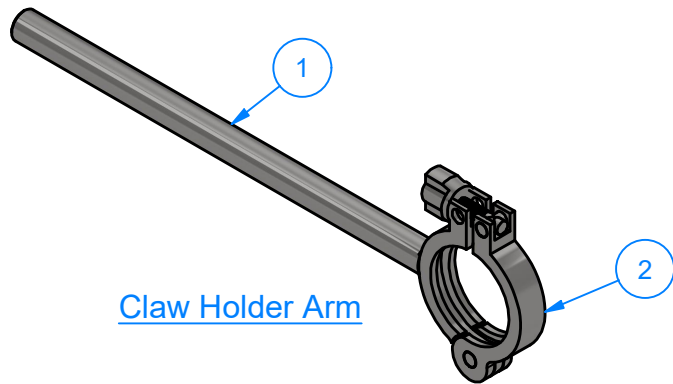


AVW EQUIPMENT CO., INC.
105 S. 9TH AVENUE
MAYWOOD, IL 60153
Tel: 708-343-7738 Fax: 708-343-9065
WWW.AVWEQUIPMENT.COM

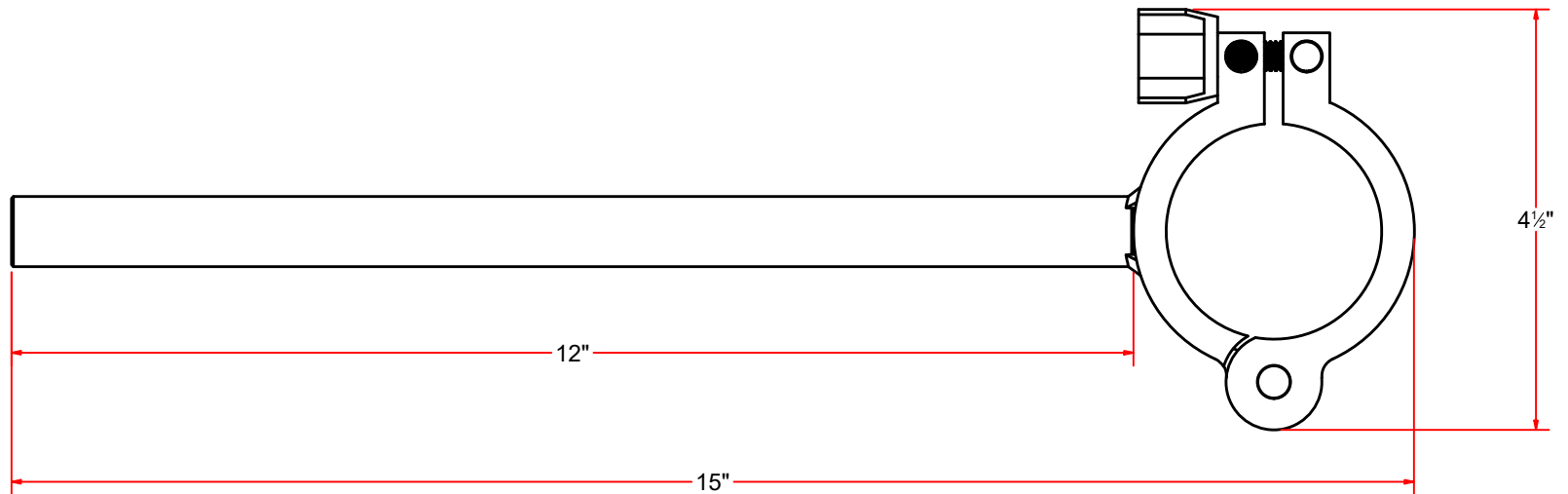
- COMPANY PROPRIETARY NOTE -
THIS DRAWING AND ITS DESIGNS ARE PROPERTY OF AVW EQUIPMENT CO. &
IT IS NOT TO BE USED OR REPRODUCED WITHOUT THE PERMISSION FROM AVW CO.

DRAWN BY	Ljubomir	CUSTOMER:	
CHECKED BY		PROJECT:	
QTY		DESCRIPTION: VA3352W17-001 - Dual Claw Holder U Bolt Plate	
RELEASE DATE	1/14/2021	PART NUMBER: VA3352W17-001	REV#
DIMENSION ARE IN INCHES & PROVIDED PRIOR TO SURFACE TREATMENTS, UNLESS NOTED.		SIZE A	EST WEIGHT:
			SHEET 13 of 18

PATH:L:\Libraries\Productivity\Vacuum Arches\Claw Holders\VA3352W17_VA3352W16 - Claw Holster\Parts\VA3352W17-001.iam



Parts List		
ITEM	QTY	DESCRIPTION
1	1	Rod D 3/4" x 12" LG
2	1	2" Sanitary Fitting Clamp



AVW EQUIPMENT CO., INC.
105 S. 9TH AVENUE
MAYWOOD, IL 60153
Tel: 708-343-7738 Fax: 708-343-9065
WWW.AVWEQUIPMENT.COM

- COMPANY PROPRIETARY NOTE -

THIS DRAWING AND ITS DESIGNS ARE PROPERTY OF AVW EQUIPMENT CO. & IT IS NOT TO BE USED OR REPRODUCED WITHOUT THE PERMISSION FROM AVW CO.

DRAWN BY

Ljubomir

CUSTOMER:

CHECKED BY

PROJECT:

QTY

DESCRIPTION: Claw Holder Arm

RELEASE
DATE

1/14/2021

PART NUMBER: R-VA3352W17-004

REV#

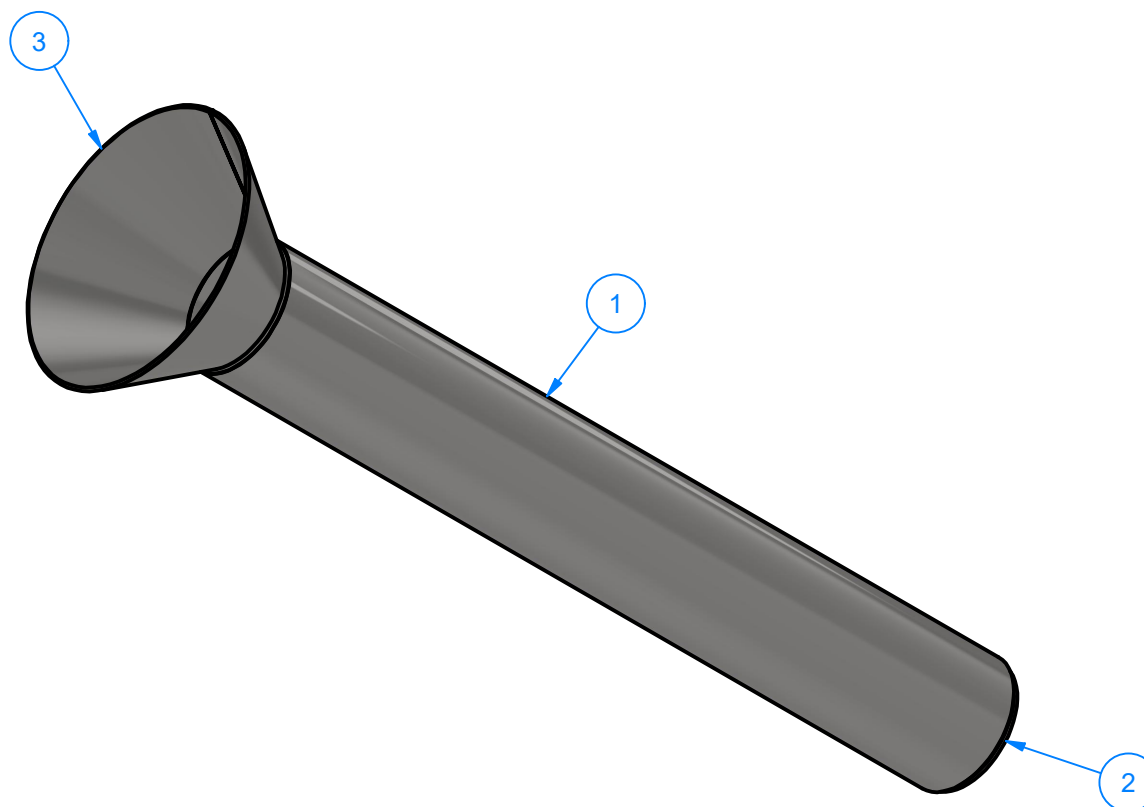
DIMENSION ARE IN INCHES & PROVIDED PRIOR
TO SURFACE TREATMENTS, UNLESS NOTED.

SIZE
A


EST WEIGHT:

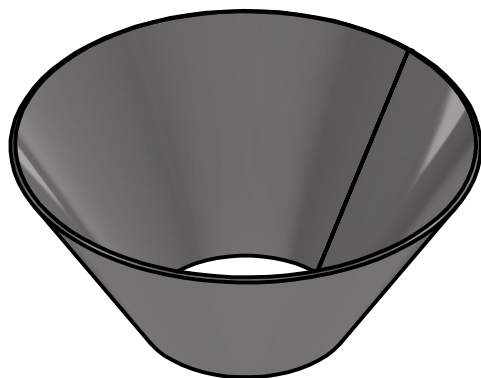
SHEET 14 of 18

Parts List		
ITEM	QTY	DESCRIPTION
1	1	2" Pipe, Schedule 10, LG 16"
2	1	Cover Plate #10Ga - 2" Pipe, Sch 10
3	1	Sheet Metal #16Ga

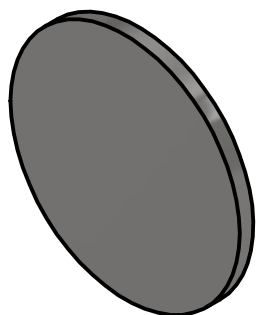
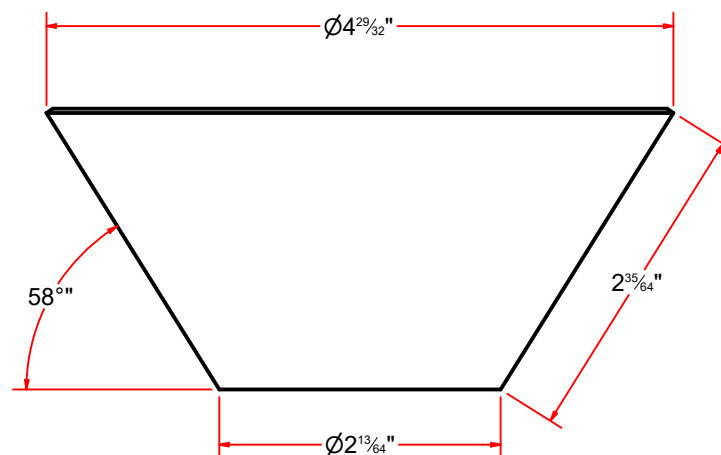


Stainless Steel Vacuum Holster

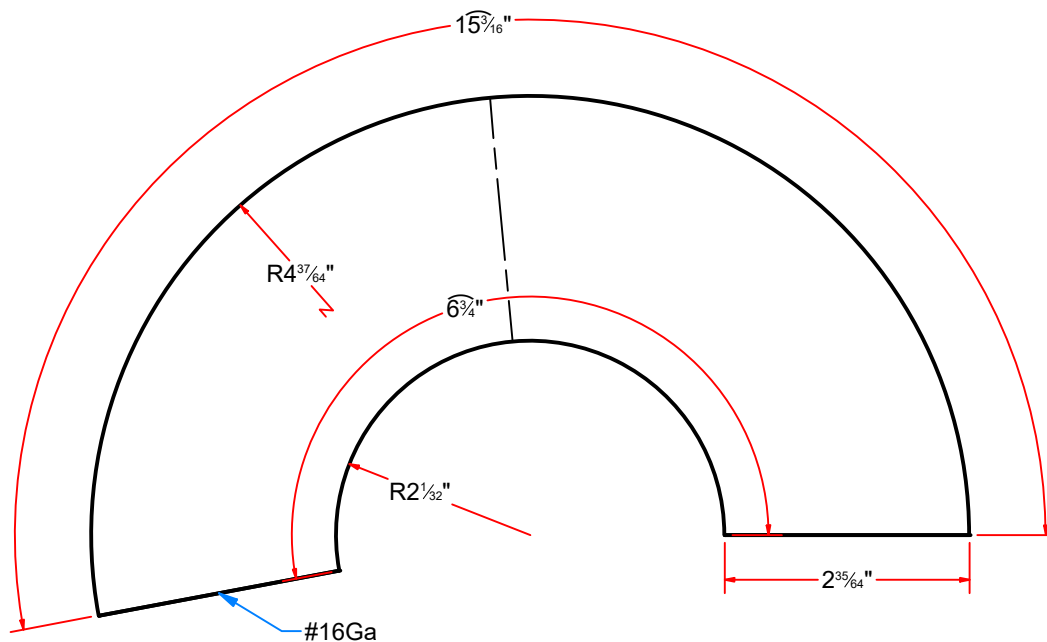
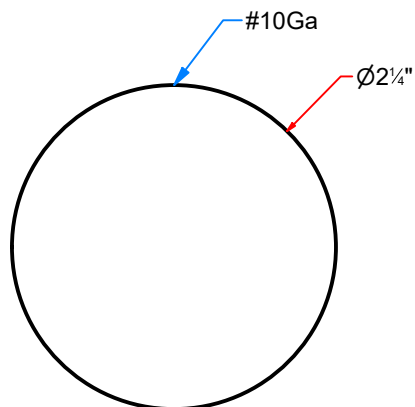
 <p>AVW EQUIPMENT CO., INC. 105 S. 9TH AVENUE MAYWOOD, IL 60153 Tel: 708-343-7738 Fax: 708-343-9065 WWW.AVWEQUIPMENT.COM</p>	DRAWN BY	Ljubomir	CUSTOMER:	
	CHECKED BY		PROJECT:	
	QTY		DESCRIPTION: Stainless Steel Vacuum Holster	
<p>- COMPANY PROPRIETARY NOTE - THIS DRAWING AND ITS DESIGNS ARE PROPERTY OF AVW EQUIPMENT CO. & IT IS NOT TO BE USED OR REPRODUCED WITHOUT THE PERMISSION FROM AVW CO.</p>	RELEASE DATE	1/14/2021	PART NUMBER: Vacuum Holster #1	REV#
	<p>DIMENSION ARE IN INCHES & PROVIDED PRIOR TO SURFACE TREATMENTS, UNLESS NOTED.</p>		<p>SIZE A</p>	<p>EST WEIGHT:</p>
<p>PATH:L:\Designs\Product Lines\Vacuum Arches\Vacuum\SS Vacuum Holster\SS Vacuum Holster.iam</p>				



Sheet Metal #16Ga



Cover Plate #10Ga - 2" Pipe, Sch 10



AVW EQUIPMENT CO., INC.
105 S. 9TH AVENUE
MAYWOOD, IL 60153
Tel: 708-343-7738 Fax: 708-343-9065
WWW.AVWEQUIPMENT.COM

- COMPANY PROPRIETARY NOTE -

THIS DRAWING AND ITS DESIGNS ARE PROPERTY OF AVW EQUIPMENT CO. & IT IS NOT TO BE USED OR REPRODUCED WITHOUT THE PERMISSION FROM AVW CO.

DRAWN BY

Ljubomir

CUSTOMER:

CHECKED BY

PROJECT:

QTY

DESCRIPTION: Cover Plate #10Ga - 2" Pipe, Sch 10

RELEASE DATE

1/14/2021

PART NUMBER: Cover Plate #10Ga - Pipe 2in Sch10

REV#

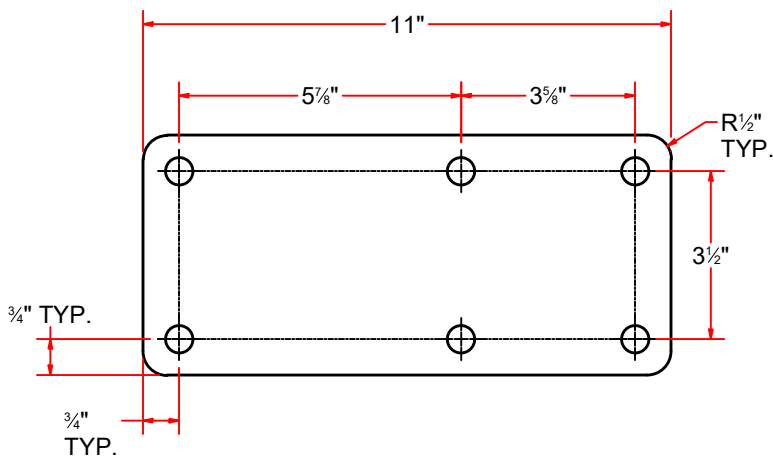
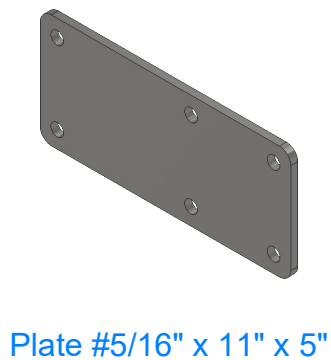
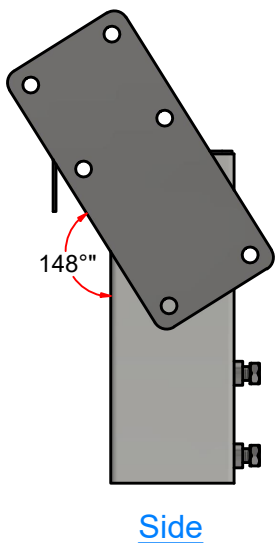
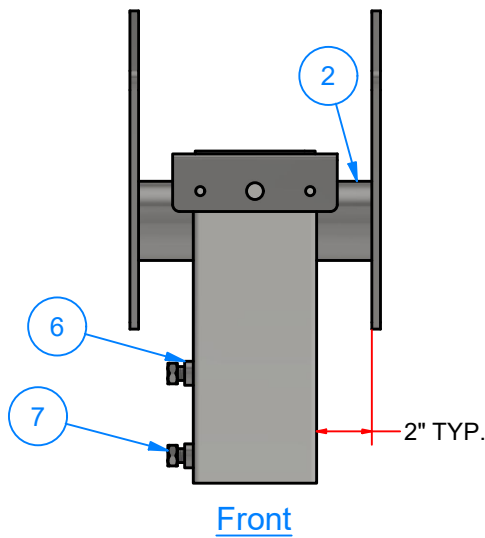
DIMENSION ARE IN INCHES & PROVIDED PRIOR TO SURFACE TREATMENTS, UNLESS NOTED.

SIZE
A

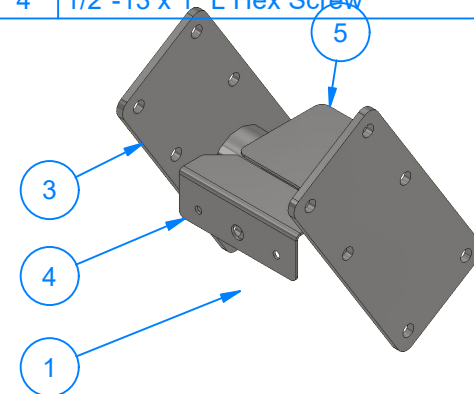
EST WEIGHT:

SHEET 16 of 18

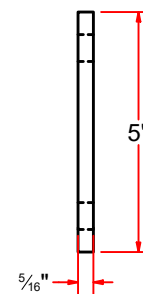
DUAL VACUUM ARCH SLEEVE




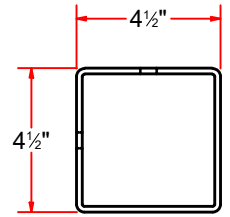
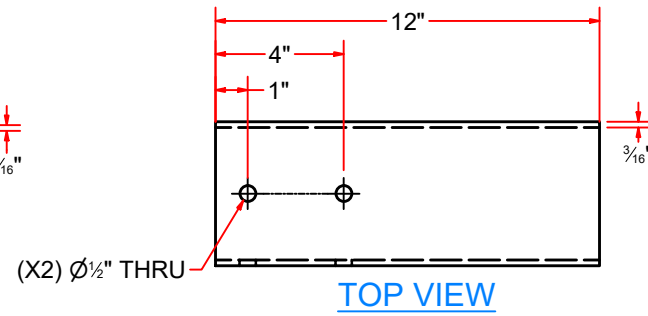
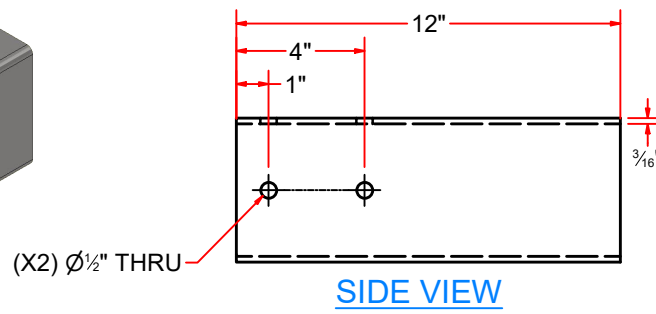
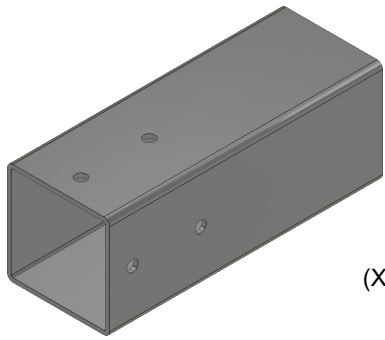
Parts List		
ITEM	QTY	DESCRIPTION
1	1	Sq.Tubing [7 Ga.] 4 1/2" x 12" LG
2	2	Pipe 2 1/2" sch 10 x 2" LG
3	2	Plate #5/16" x 11" x 5"
4	1	Sheet Metal #10Ga x 6" x 4"
5	1	Cover Plate #14Ga x 4-3_8 x 4-3_8
6	4	Sleeve Nut 1/2" #5/16" x 7/8"OD x 7/16"ID
7	4	1/2"-13 x 1" L Hex Screw



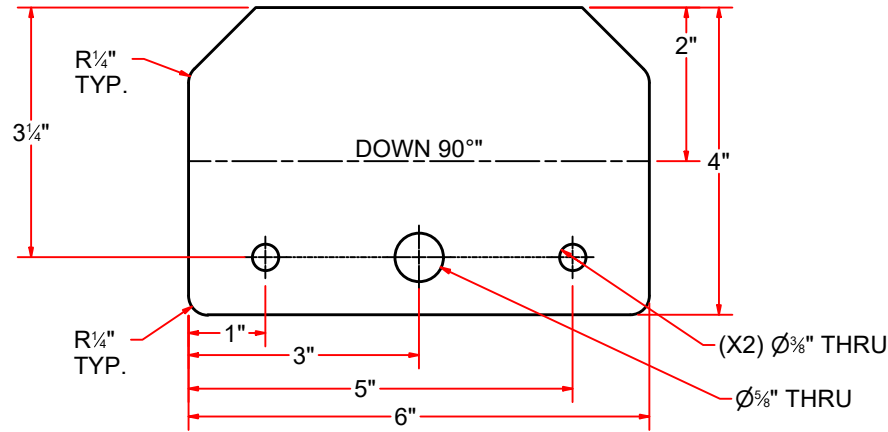
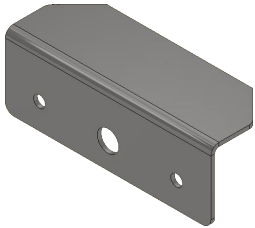
Dual Vacuum Arch Sleeve



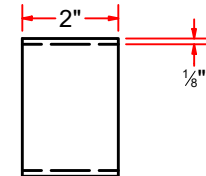
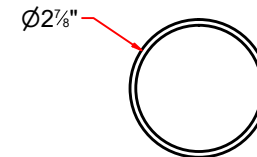
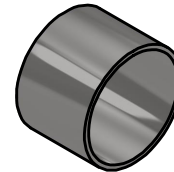
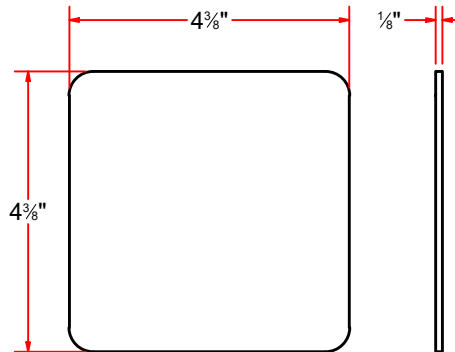
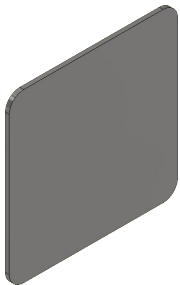
 AVW EQUIPMENT CO., INC. 105 S. 9TH AVENUE MAYWOOD, IL 60153 Tel: 708-343-7738 Fax: 708-343-9065 WWW.AVWEQUIPMENT.COM	DRAWN BY	Ljubomir	CUSTOMER:		
	CHECKED BY		PROJECT:		
	QTY		DESCRIPTION: Plate #5/16" x 11" x 5"		
- COMPANY PROPRIETARY NOTE - THIS DRAWING AND ITS DESIGNS ARE PROPERTY OF AVW EQUIPMENT CO. & IT IS NOT TO BE USED OR REPRODUCED WITHOUT THE PERMISSION FROM AVW CO.	RELEASE DATE	1/14/2021	PART NUMBER: (11 x 5) & ((H 29_64 x 6) #5_16		REV#
	DIMENSION ARE IN INCHES & PROVIDED PRIOR TO SURFACE TREATMENTS, UNLESS NOTED.		SIZE A	EST WEIGHT:	SHEET 17 of 18
PATH:L:\Libraries\AVW Components\Plates\((11 x 5) & ((H 29_64 x 6) #5_16).ipt					



Sq.Tubing [7 Ga.] 4 1/2" x 12" LG



Sheet Metal #10Ga x 6" x 4"



Pipe 2 1/2" sch 10 x 2" LG

Cover Plate #14Ga x 4-3/8 x 4-3/8



AVW EQUIPMENT CO., INC.
105 S. 9TH AVENUE
MAYWOOD, IL 60153
Tel: 708-343-7738 Fax: 708-343-9065
WWW.AVWEQUIPMENT.COM

- COMPANY PROPRIETARY NOTE -

THIS DRAWING AND ITS DESIGNS ARE PROPERTY OF AVW EQUIPMENT CO. & IT IS NOT TO BE USED OR REPRODUCED WITHOUT THE PERMISSION FROM AVW CO.

DRAWN BY

Ljubomir

CUSTOMER:

CHECKED BY

PROJECT:

QTY

DESCRIPTION: Sq.Tubing [7 Ga.] 4 1/2" x 12" LG

RELEASE DATE

1/14/2021

PART NUMBER: AA0BB

REV#

DIMENSION ARE IN INCHES & PROVIDED PRIOR TO SURFACE TREATMENTS, UNLESS NOTED.

SIZE
A

EST WEIGHT:

SHEET 18 of 18

PATH:L:\Libraries\AVW Components\Tubing\Square Tubing\Sq.Tubing 4.5 in\Sq. Tubing [7 Gauge] 4.5 in x 12 in LG [Sleeve].ipt